

CCL VDL
GAMMA RAY
RADIAL BOND LOG

Company CHEVRON
Well DILLARD AB 10-08
Field WATTENBERG
County WELD State COLORADO

Location: API #: 5-123-31485
Lat/Long: 40.589340 / -104.528090
SEC 10 TWP 7N RGE 64W
Permanent Datum GL Elevation 4829'
Log Measured From KB
Drilling Measured From KB
Other Services N/A
Elevation K.B. 4842'
D.F. 4841'
G.L. 4829'

Date 8-7-24
Run Number ONE
Depth Driller 9150'
Depth Logger 905'
Bottom Logged Interval 905'
Top Log Interval SURFACE
Open Hole Size 8.75"
Type Fluid H2O
Density / Viscosity 8.3#
Max. Recorded Temp. N/A
Estimated Cement Top SEE LOG
Time Well Ready 7:20AM
Time Logger on Bottom 7:30AM
Equipment Number UNIT 453
Location GREELEY, CO
Recorded By T. KASPER
Witnessed By T. DUNN

Borehole Record				Tubing Record			
Run Number	Bit	From	To	Size	Weight	From	To
Casing Record	Size	Mgt/Ft	Top	Bottom			
Surface String	9.625"	36#	SURFACE	750'			
Prot. String							
Production String	7"	26#	SURFACE	9150'			
Liner							

<<< Fold Here >>>

All interpretations are opinions based on inferences from electrical or other measurements and we cannot and do not guarantee the accuracy or correctness of any interpretation, and we shall not, except in the case of gross or willful negligence on our part, be liable or responsible for any loss, costs, damages, or expenses incurred or sustained by anyone resulting from any interpretation made by any of our officers, agents or employees. These interpretations are also subject to our general terms and conditions set out in our current Price Schedule.

Comments

LOG RAN PER CUSTOMER REQUEST
ZERO PRESSURE APPLIED

FREE PIPE FOR 7" 26# CASING IS 62.1651mV

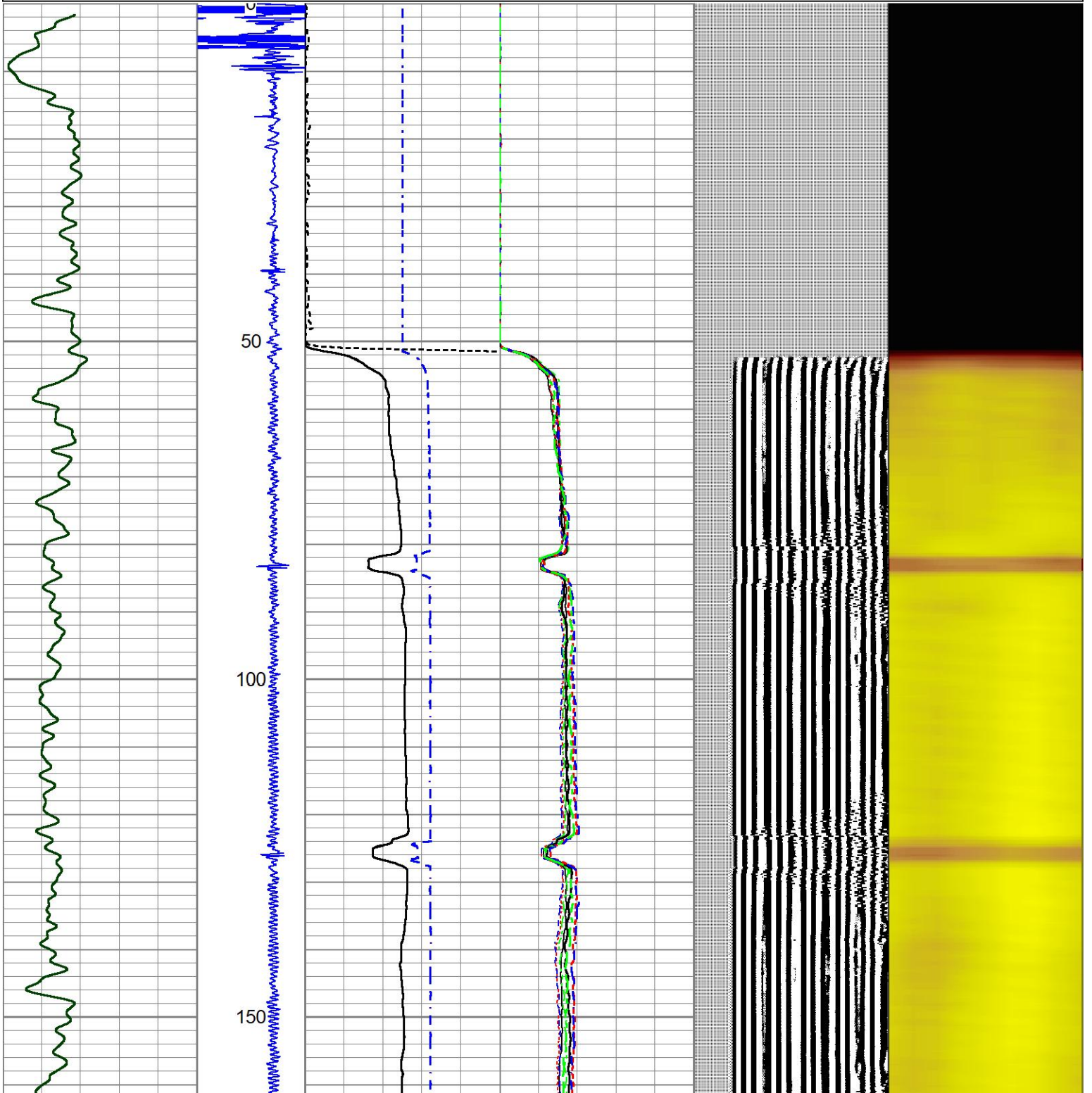
THANK YOU FOR USING JMR SERVICES

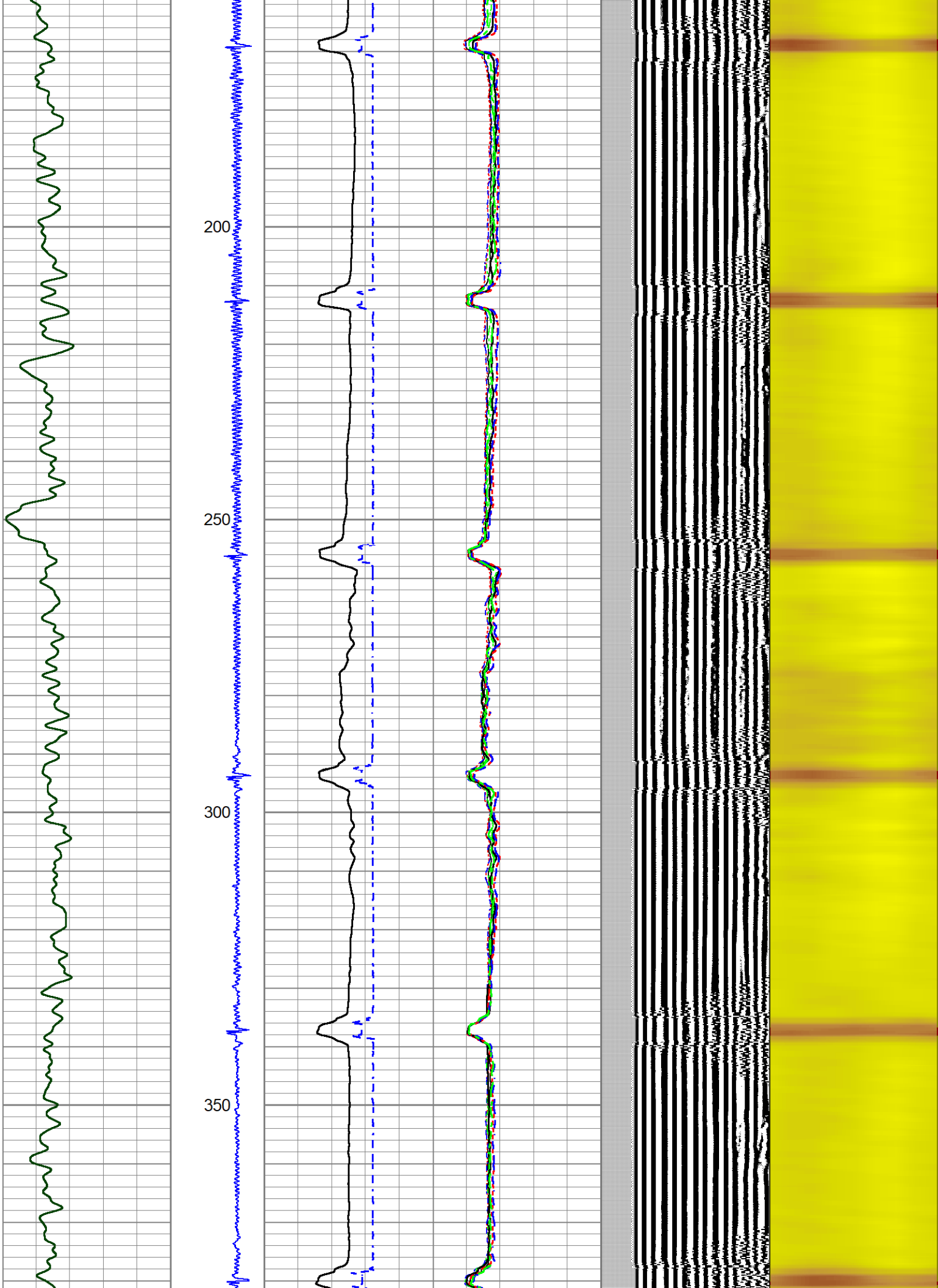


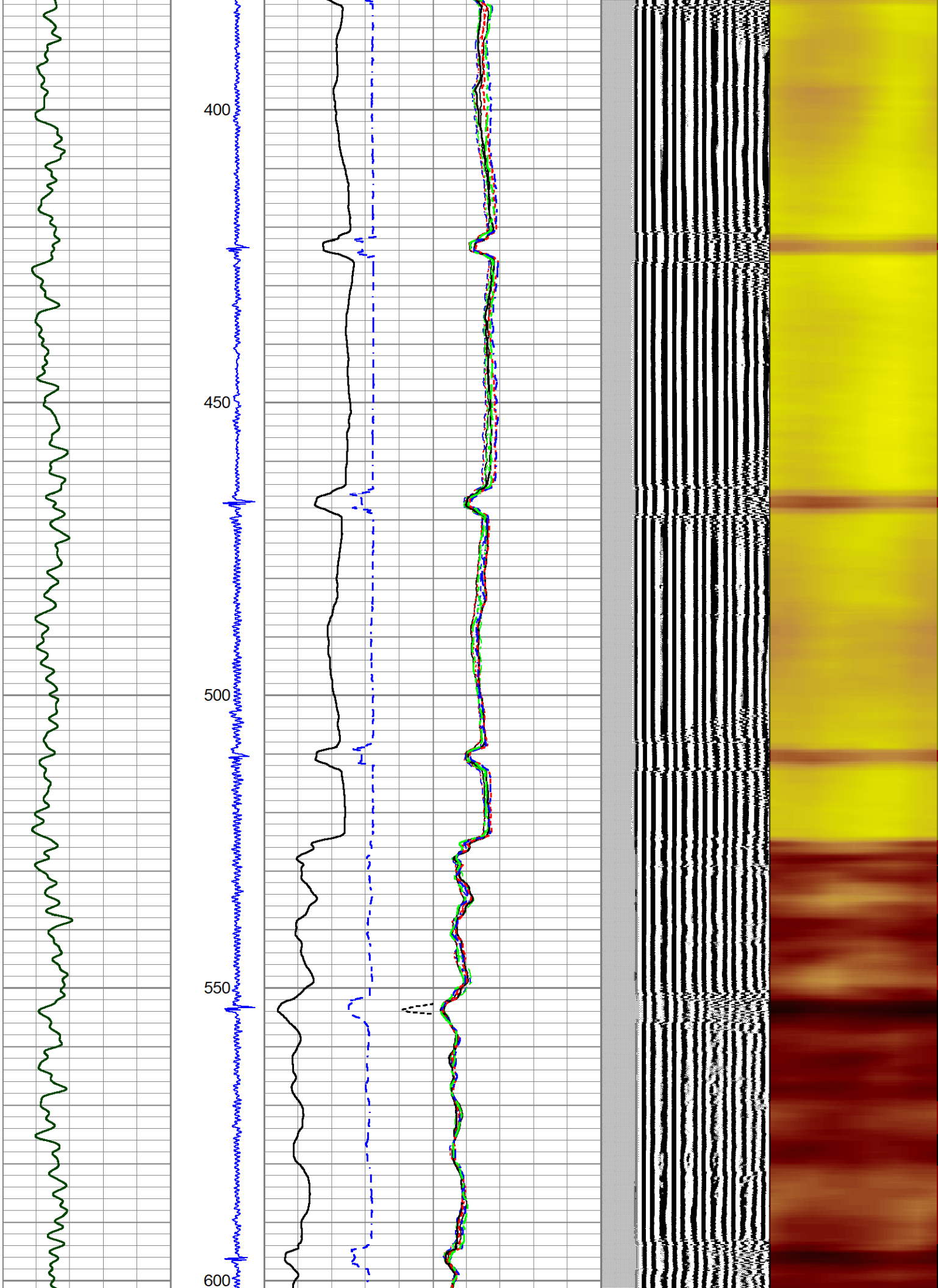
MAIN PASS

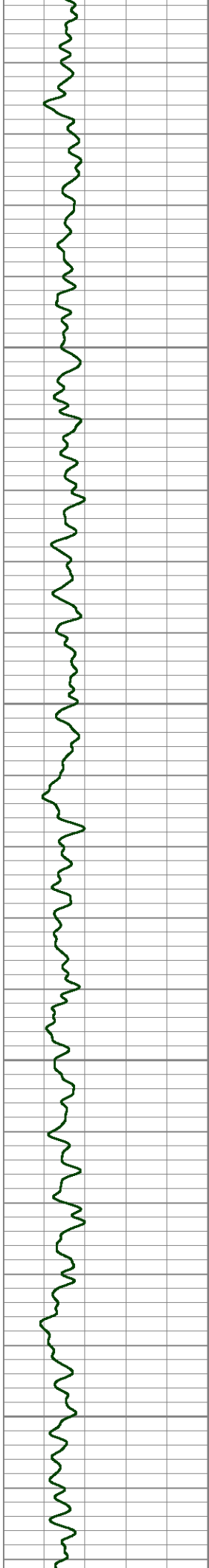
Database File 8-7-24 dillard ab 10-08 rbl.db
 Dataset Pathname pass3
 Presentation Format rbl pres
 Dataset Creation Wed Aug 07 07:35:13 2024
 Charted by Depth in Feet scaled 1:240

0	GR (GAPI)	200	-4	DCCL	1	0	AMP (mV)	100	0	AMPS1	150	200	VDL (usec)	1200	1	Cement Map	8	
						0	AMPx10 (mV)	10	0	AMPS2	150							
						350	TT (usec)	250	0	AMPS3	150							
									0	AMPS4	150							
									0	AMPS5	150							
									0	AMPS6	150							
									0	AMPS7	150							
									0	AMPS8	150							







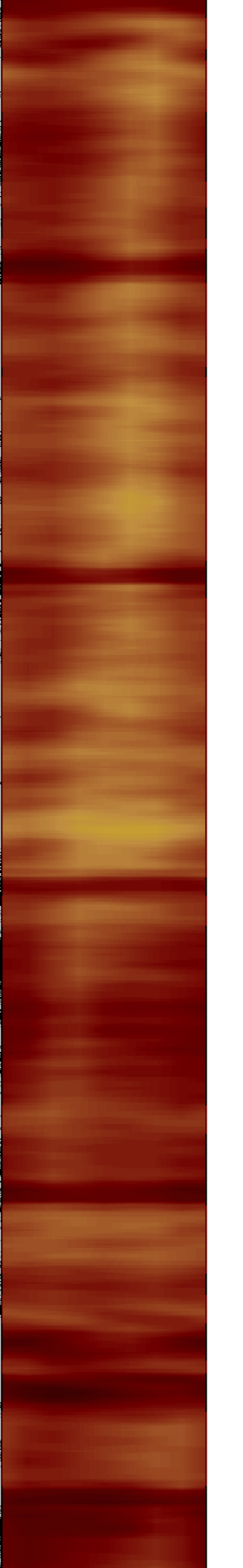
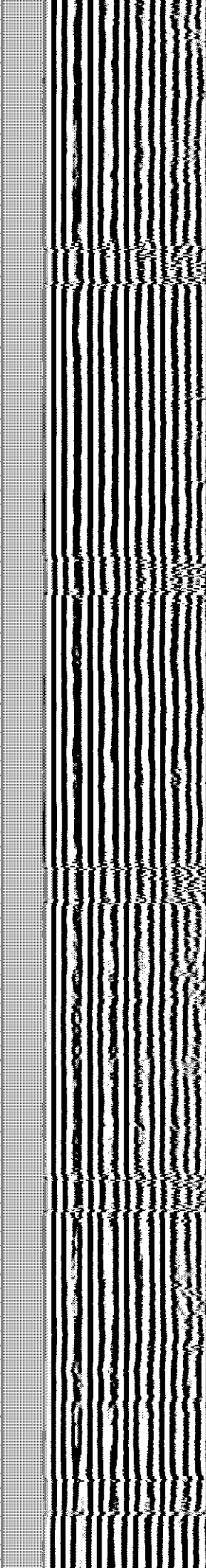
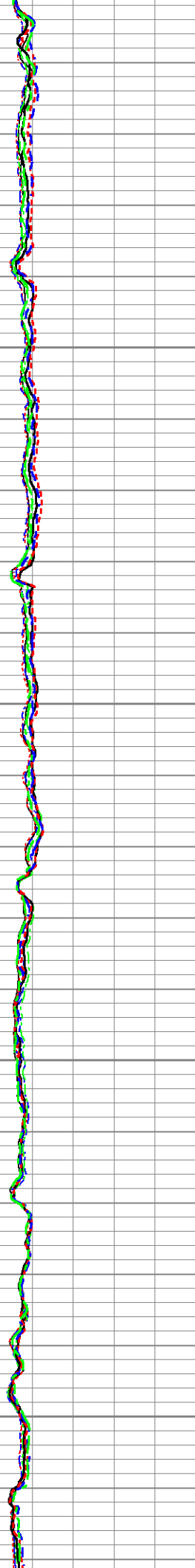
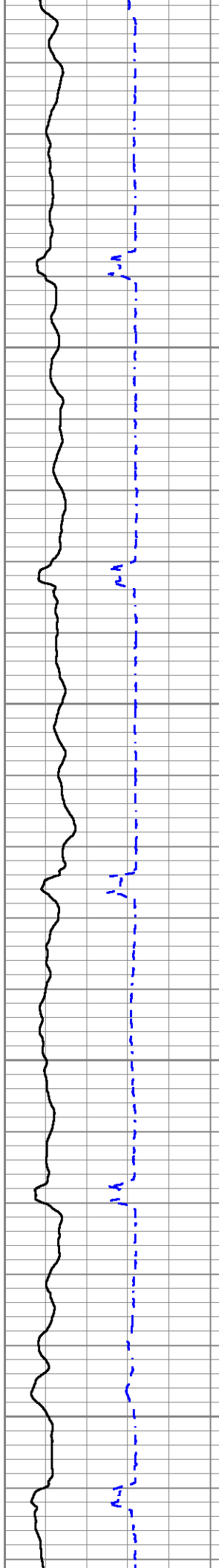


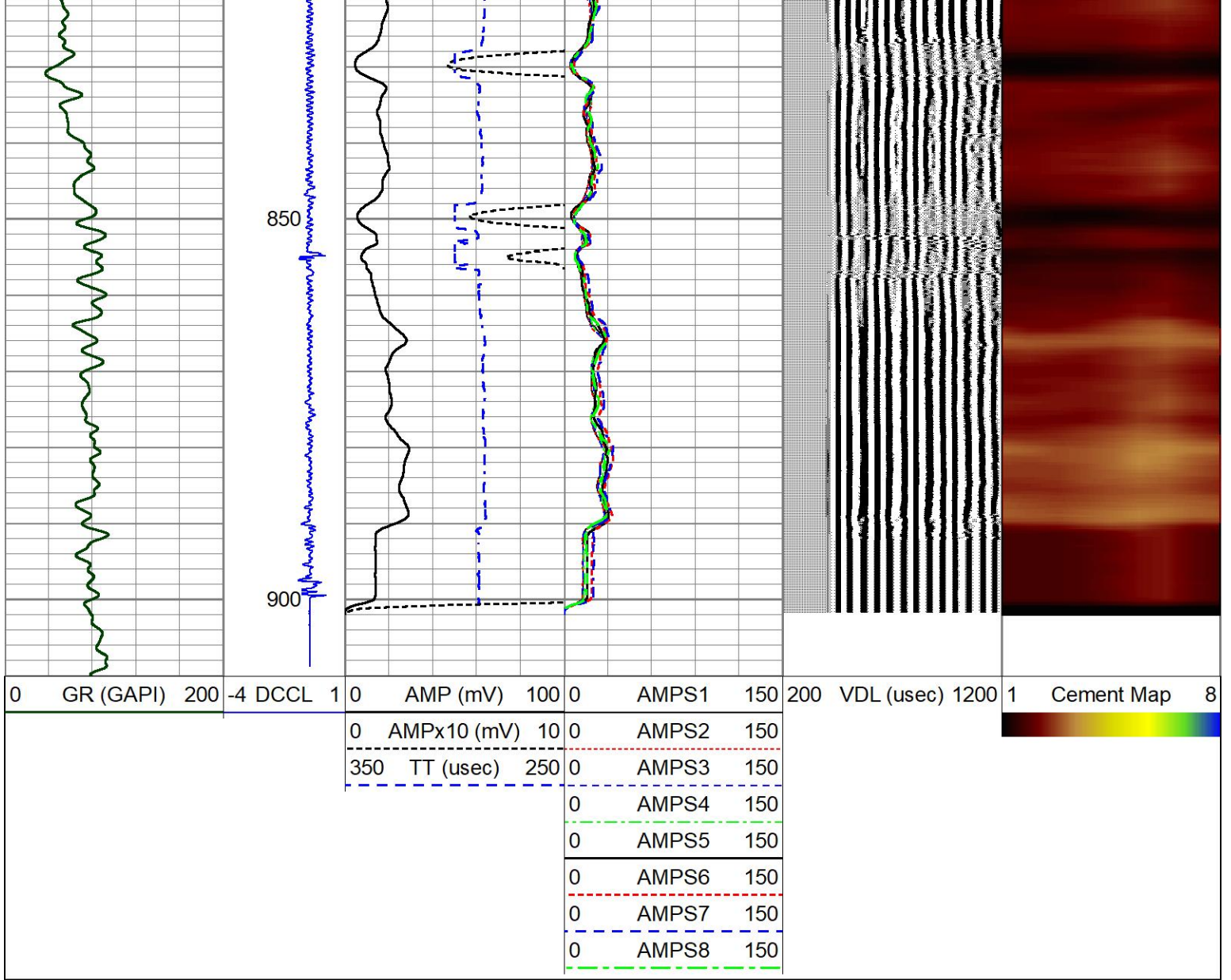
650

700

750

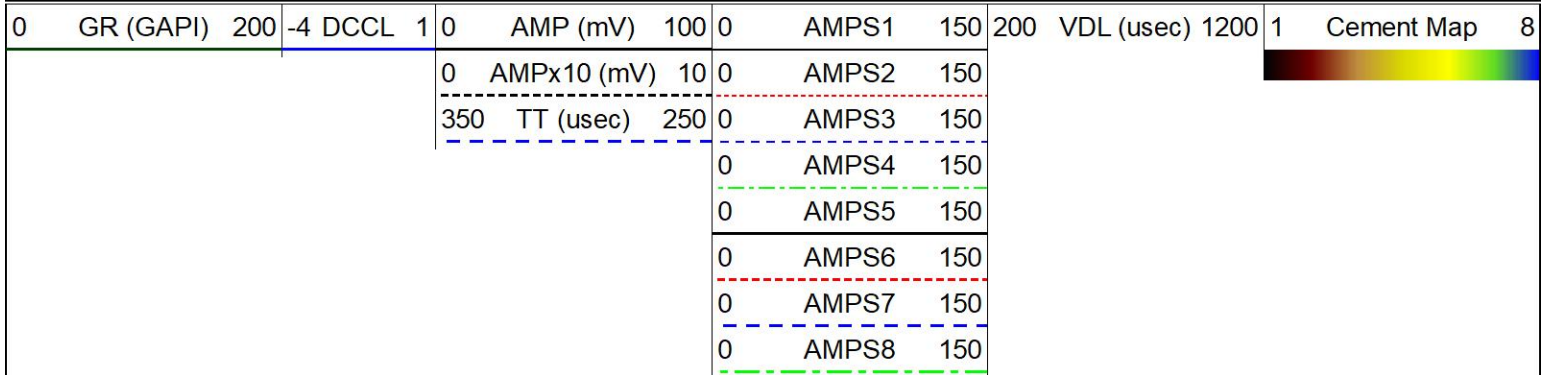
800

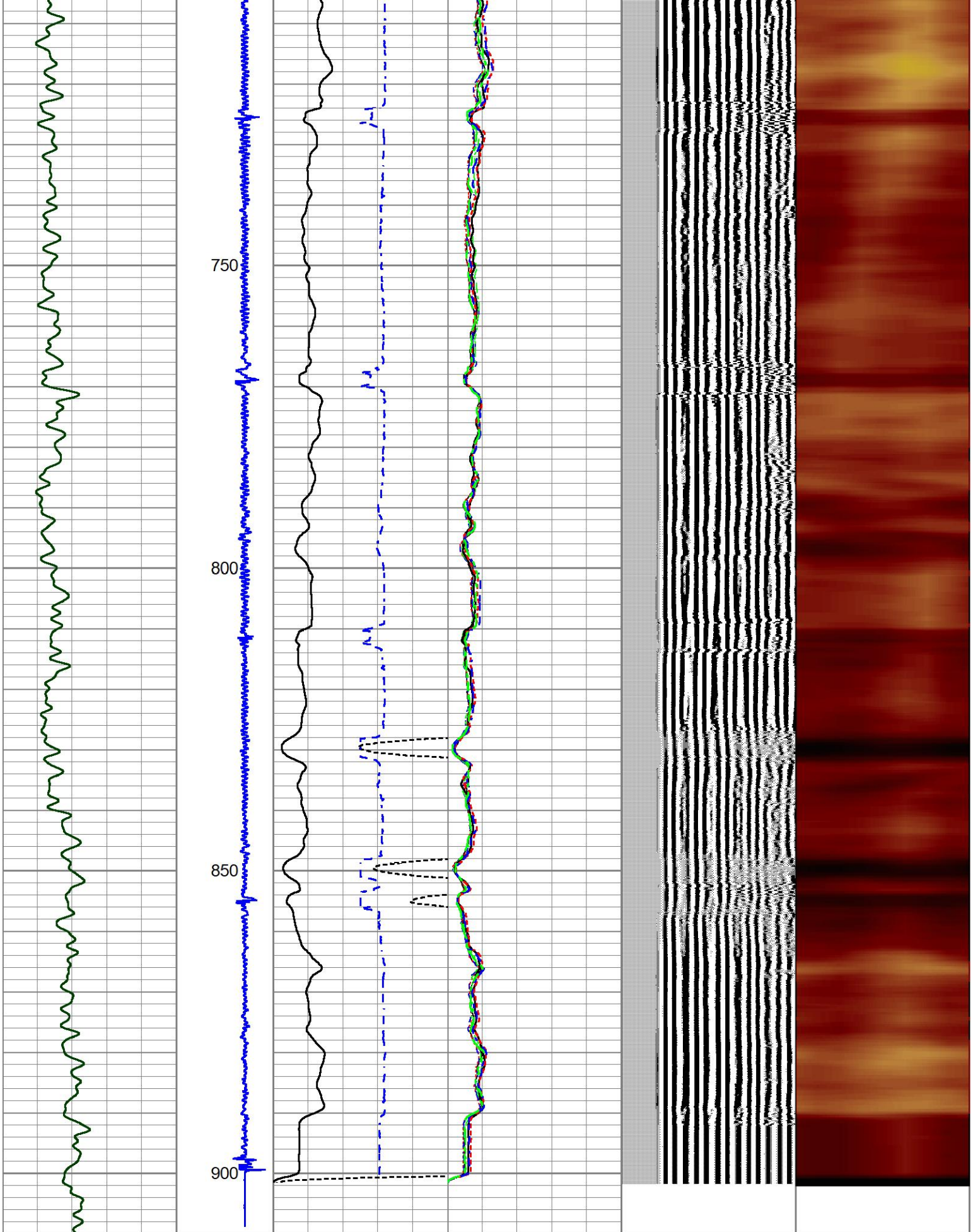




REPEAT PASS

Database File 8-7-24 dillard ab 10-08 rbl.db
 Dataset Pathname pass2
 Presentation Format rbl pres
 Dataset Creation Wed Aug 07 07:29:48 2024
 Charted by Depth in Feet scaled 1:240





0	GR (GAPI)	200	-4	DCCL	1	0	AMP (mV)	100	0	AMPS1	150	200	VDL (usec)	1200	1	Cement Map	8
---	-----------	-----	----	------	---	---	----------	-----	---	-------	-----	-----	------------	------	---	------------	---

0	AMPx10 (mV)	10	0	AMPS2	150
---	-------------	----	---	-------	-----

350	TT (usec)	250	0	AMPS3	150
-----	-----------	-----	---	-------	-----

0	AMPS4	150
---	-------	-----



0	AMPS4	150
0	AMPS5	150
0	AMPS6	150
0	AMPS7	150
0	AMPS8	150

Log Variables

DatabaseC:\ProgramData\Warrior\Data\8-7-24 dillard ab 10-08 rbl.db
 Dataset field/well/run1/pass3/_vars_

Top - Bottom

BOREID in 7.875	BOTTEMP degF 100	CASEOD in 7	CASETHCK in 0	CASEWGHT lb/ft 26	MAXAMPL mV 0	MINAMPL mV 1	MINATTN db/ft 0.8
PERFS No	PPT usec 0	SRFTEMP degF 0	TDEPTH ft 0				

Calibration Report

Database File 8-7-24 dillard ab 10-08 rbl.db
 Dataset Pathname pass3
 Dataset Creation Wed Aug 07 07:35:13 2024

Gamma Ray Calibration Report

Serial Number: GCL004_base
 Tool Model: GCL004
 Performed: (Not Performed)

Calibrator Value: 1.0 GAPI

Background Reading: 0.0 cps
 Calibrator Reading: 1.0 cps

Sensitivity: 1.0000 GAPI/cps

Segmented Cement Bond Log Calibration Report

Serial Number: FW2001-30
 Tool Model: HTRCB-275

Calibration Casing Diameter: 7.000 in
 Calibration Depth: 70.075 ft

Master Calibration, performed Wed Aug 07 07:16:40 2024:

	Raw (v)		Calibrated (mv)		Results	
	Zero	Cal	Zero	Cal	Gain	Offset
3'	-0.001	0.658	0.000	62.165	94.329	0.115
CAL	-0.002	0.659				
5'	-0.002	0.624	0.000	62.165	99.338	0.186
SUM						
S1	-0.002	0.657	0.000	62.165	94.256	0.207
S2	-0.002	0.664	0.000	62.165	93.327	0.223
S3	-0.002	0.667	0.000	62.165	92.825	0.227
S4	-0.002	0.662	0.000	62.165	93.615	0.192
S5	-0.002	0.664	0.000	62.165	93.347	0.147
S6	-0.002	0.633	0.000	62.165	97.938	0.197
S7	-0.002	0.611	0.000	62.165	101.285	0.240

S7	-0.002	0.611	0.000	62.165	101.585	0.240
S8	-0.002	0.619	0.000	62.165	100.145	0.180

Internal Reference Calibration, performed Wed Aug 07 07:17:23 2024:

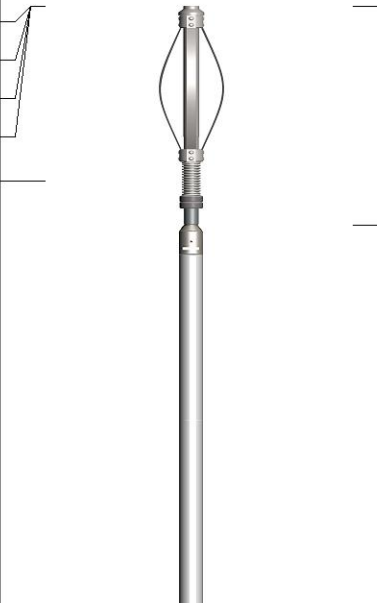
	Raw (v)		Calibrated (v)		Results	
	Zero	Cal	Zero	Cal	Gain	Offset
CAL	-0.001	0.660	-0.002	0.659	1.001	-0.001

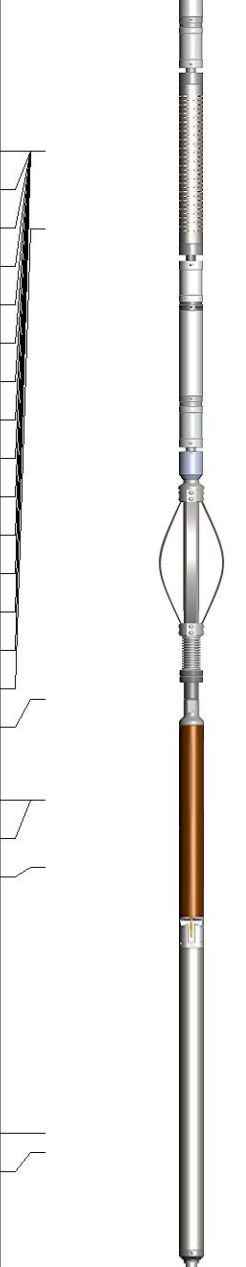
Air Zero Calibration, performed (Not Performed):

	Raw (v)		Calibrated (v)		Results	
	Zero		Zero		Offset	
3'	0.000		0.000		0.000	
5'	0.000		0.000		0.000	
SUM						
S1	0.000		0.000		0.000	
S2	0.000		0.000		0.000	
S3	0.000		0.000		0.000	
S4	0.000		0.000		0.000	
S5	0.000		0.000		0.000	
S6	0.000		0.000		0.000	
S7	0.000		0.000		0.000	
S8	0.000		0.000		0.000	

Inclinometer Calibration Report

Performed:	(Not Performed)				
	Low Read.	High Read.	Low Ref.	High Ref.	
X Accelerometer	0.00	1.00	0.00	1.00	gee
Y Accelerometer	0.00	1.00	0.00	1.00	gee
Z Accelerometer	0.00	1.00	0.00	1.00	gee

Sensor	Offset (ft)	Schematic	Description	Length (ft)	O.D. (in)	Weight (lb)
GCT_FMWR	24.36		CENT-BC275-0000 Probe 2.75" Bowspring Centralizer	2.83	2.75	24.00
mSec_Count	24.36					
RBT_Status	24.36					
Error_Ct	24.36					
RBT_HV	22.09					

			RBT8-HTRCB-275 (FW2001-30) Probe 2.75" High Temperature RADII 8 Sector Bond Tool w/ external temperature	11.08	2.75		
RBT_ACCZ	14.69						
RBT_ACCY	14.69						
RBT_ACCX	14.69						
WVFSYNC	14.69						
WVFS8	14.69						
WVFS7	14.69						
WVFS6	14.69						
WVFS5	14.69						
WVFS4	14.69						
WVFS3	14.69						
WVFS2	14.69						
WVFS1	14.69						
WVFCAL	14.69			CENT-BC275-0000 Probe 2.75" Bowspring Centralizer	2.83	2.75	24.00
WVF3FT	14.69						
WVF5FT	13.69						
GCT_HV	7.61						
CCL\$2	6.31						
CCL\$1	6.31						
GCT_Temp	5.43						
			GCacc-GCL004 (GCL004_base) Probe High Temp Gamma Ray - CCL (6 Magnet) w/ Temp	7.28	2.75	92.00	
GCT_IntTemp	2.00						
GR	1.75						
			Plug-FA108-0000 1.38" Bull Plug	0.33	1.38	1.00	
Dataset:			8-7-24 dillard ab 10-08 rbl.db: field/well/run1/pass3				
Total length:			24.36 ft				
Total weight:			141.00 lb				
O.D.:			2.75 in				