

# **CRESTONE PEAK RESOURCES**

**ARAPAHOE COUNTY**

**SEC 19-T4S-R64W**

**GRIMM MOTOCROSS 4-65 24-23 1AH**

**OWB**

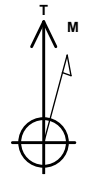
**Design: FINAL SURVEY**

## **Standard Survey Report**

**26 August, 2024**

Project: ARAPAHOE COUNTY  
 Site: SEC 19-T4S-R64W  
 Well: GRIMM MOTOCROSS 4-65 24-23 1AH  
 Wellbore: OWB  
 Design: FINAL SURVEY

PROJECT DETAILS: ARAPAHOE COUNTY  
 Geodetic System: US State Plane 1983  
 Datum: North American Datum 1983  
 Ellipsoid: GRS 1980  
 Zone: Colorado Central Zone  
 System Datum: Mean Sea Level



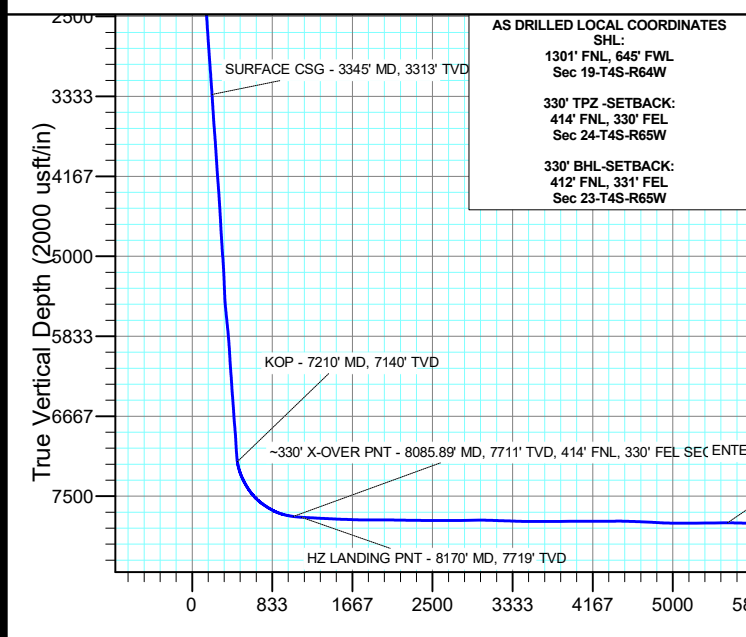
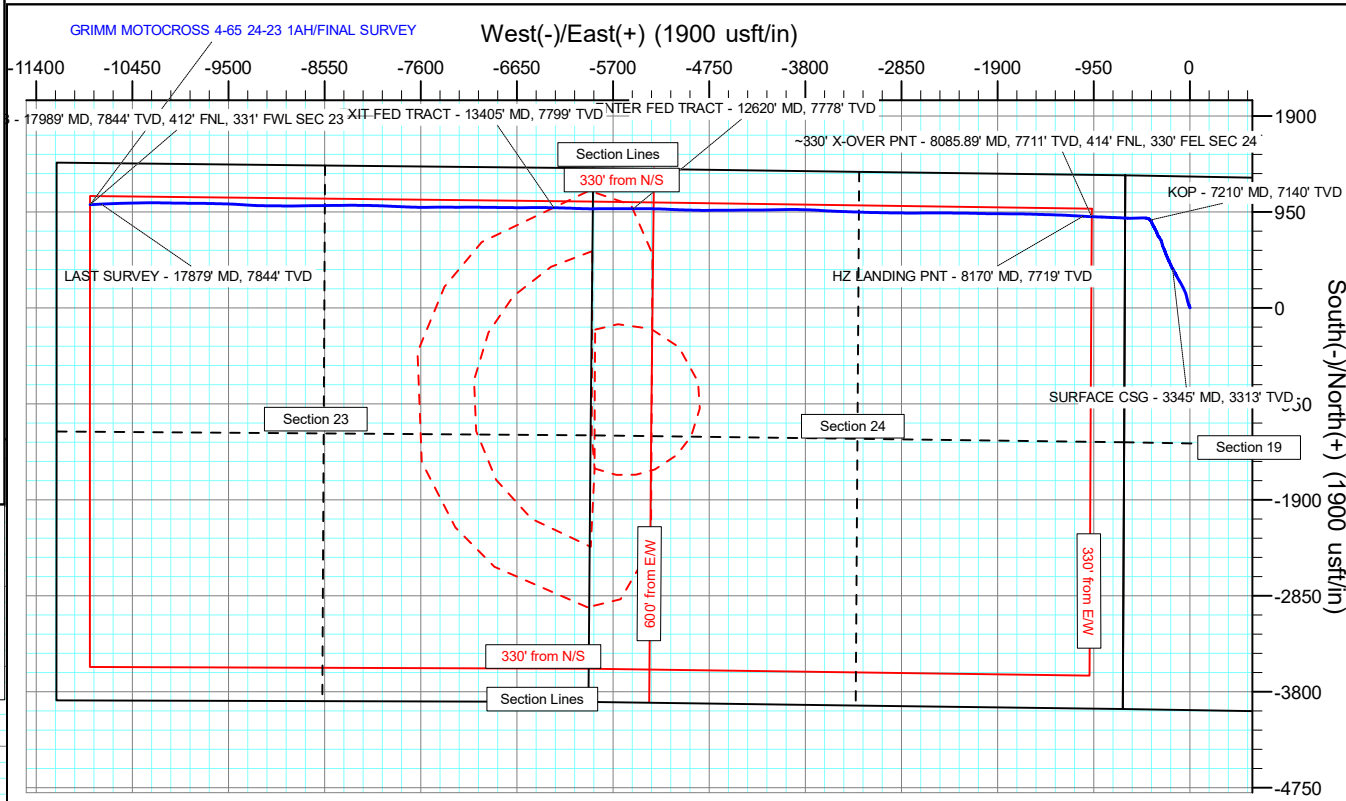
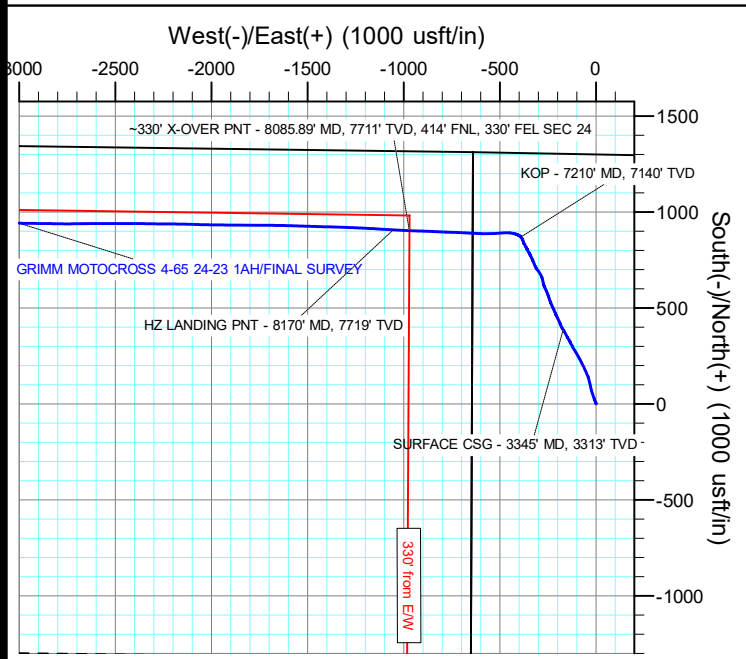
Azimuths to True North  
 Magnetic North: 7.36°  
 Magnetic Field  
 Strength: 51257.1nT  
 Dip Angle: 65.98°  
 Date: 8/18/2024  
 Model: IGRF2020

WELL DETAILS: GRIMM MOTOCROSS 4-65 24-23 1AH

+N/-S	+E/-W	Northing	Easting	Latitude	Longitude	Slot
0.00	0.00	1678426.82	3252960.23	39.692646°N	104.601089°W	

ANNOTATIONS

MD	Inc	Azi	TVD	+N/-S	+E/-W	VSec	Departure	Annotation
3345.00	5.95	325.66	3312.68	387.28	-170.70	206.25	426.69	SURFACE CSG - 3345' MD, 3313' TVD
7210.00	10.68	316.12	7140.31	870.51	-390.06	469.95	961.47	KOP - 7210' MD, 7140' TVD
8085.89	82.21	272.38	7710.89	903.50	-970.85	1051.28	1547.38	~330' X-OVER PNT - 8085.89' MD, 7711' TVD, 414' FNL, 330' FEL SEC 24
8170.00	85.81	273.20	7719.21	907.71	-1054.42	1134.88	1630.95	HZ LANDING PNT - 8170' MD, 7719' TVD
12620.00	90.03	269.96	7777.57	982.89	-5501.33	5569.25	6079.45	ENTER FED TRACT - 12620' MD, 7778' TVD
13405.00	89.61	271.06	7799.22	992.18	-6285.77	6351.11	6864.07	EXIT FED TRACT - 13405' MD, 7799' TVD
17879.00	89.72	267.45	7843.82	1028.27	-10757.94	10806.96	11337.53	LAST SURVEY - 17879' MD, 7844' TVD
17989.00	89.72	267.45	7844.36	1023.38	-10867.83	10915.90	11447.53	PTB - 17989' MD, 7844' TVD, 412' FNL, 331' FWL SEC 23



AS DRILLED LOCAL COORDINATES  
 SHL:  
 1301' FNL, 645' FWL  
 Sec 19-T4S-R64W  
 330' TPZ -SETBACK:  
 414' FNL, 330' FEL  
 Sec 24-T4S-R65W  
 330' BHL-SETBACK:  
 412' FNL, 331' FEL  
 Sec 23-T4S-R65W

# Civitas Resources

## Survey Report

<b>Company:</b> CRESTONE PEAK RESOURCES	<b>Local Co-ordinate Reference:</b> Well GRIMM MOTOCROSS 4-65 24-23 1AH
<b>Project:</b> ARAPAHOE COUNTY	<b>TVD Reference:</b> KB 25' @ 5721.00usft
<b>Site:</b> SEC 19-T4S-R64W	<b>MD Reference:</b> KB 25' @ 5721.00usft
<b>Well:</b> GRIMM MOTOCROSS 4-65 24-23 1AH	<b>North Reference:</b> True
<b>Wellbore:</b> OWB	<b>Survey Calculation Method:</b> Minimum Curvature
<b>Design:</b> FINAL SURVEY	<b>Database:</b> EDM

<b>Project</b> ARAPAHOE COUNTY		
<b>Map System:</b> US State Plane 1983	<b>System Datum:</b>	Mean Sea Level
<b>Geo Datum:</b> North American Datum 1983		
<b>Map Zone:</b> Colorado Central Zone		Using geodetic scale factor

<b>Site</b> SEC 19-T4S-R64W		
<b>Site Position:</b>	<b>Northing:</b> 1,679,733.25 usft	<b>Latitude:</b> 39.696250°N
<b>From:</b> Lat/Long	<b>Easting:</b> 3,252,308.22 usft	<b>Longitude:</b> 104.603360°W
<b>Position Uncertainty:</b> 0.00 usft	<b>Slot Radius:</b> 13.200 in	<b>Grid Convergence:</b> 0.57 °

<b>Well</b> GRIMM MOTOCROSS 4-65 24-23 1AH		
<b>Well Position</b> +N/-S 0.00 usft	<b>Northing:</b> 1,678,426.82 usft	<b>Latitude:</b> 39.692646°N
+E/-W 0.00 usft	<b>Easting:</b> 3,252,960.23 usft	<b>Longitude:</b> 104.601089°W
<b>Position Uncertainty</b> 0.00 usft	<b>Wellhead Elevation:</b> usft	<b>Ground Level:</b> 5,696.00 usft

<b>Wellbore</b> OWB					
Magnetics	Model Name	Sample Date	Declination (°)	Dip Angle (°)	Field Strength (nT)
	IGRF2020	8/18/2024	7.36	65.98	51,257.11633950

<b>Design</b> FINAL SURVEY					
<b>Audit Notes:</b>					
<b>Version:</b> 1.0	<b>Phase:</b> ACTUAL	<b>Tie On Depth:</b>	0.00		
Vertical Section:	Depth From (TVD) (usft)	+N/-S (usft)	+E/-W (usft)	Direction (°)	
	0.00	0.00	0.00	275.38	

<b>Survey Program</b>		<b>Date</b> 8/26/2024		
From (usft)	To (usft)	Survey (Wellbore)	Tool Name	Description
125.00	3,286.00	SURFACE SURVEY (OWB)	MWD OWSG	OWSG MWD - Standard
3,400.00	17,989.00	FINAL SURVEY (OWB)	MWD OWSG	OWSG MWD - Standard

Measured Depth (usft)	Inclination (°)	Azimuth (°)	Vertical Depth (usft)	+N/-S (usft)	+E/-W (usft)	Vertical Section (usft)	Dogleg Rate (°/100ft)	Build Rate (°/100ft)	Turn Rate (°/100ft)
0.00	0.00	0.00	0.00	0.00	0.00	0.00	0.00	0.00	0.00
125.00	0.64	8.33	125.00	0.69	0.10	-0.04	0.51	0.51	0.00
215.00	0.79	23.01	214.99	1.76	0.42	-0.25	0.26	0.17	16.31
305.00	0.61	23.25	304.98	2.77	0.85	-0.58	0.20	-0.20	0.27
394.00	1.26	1.50	393.97	4.18	1.06	-0.66	0.82	0.73	-24.44
484.00	2.77	323.77	483.92	6.93	-0.20	0.85	2.15	1.68	-41.92
579.00	4.85	334.07	578.70	12.39	-3.31	4.46	2.30	2.19	10.84
674.00	7.01	341.57	673.19	21.50	-6.90	8.89	2.41	2.27	7.89
769.00	8.94	338.98	767.27	33.90	-11.38	14.51	2.07	2.03	-2.73
864.00	9.27	341.01	861.07	48.02	-16.52	20.95	0.48	0.35	2.14

# Civitas Resources

## Survey Report

<b>Company:</b>	CRESTONE PEAK RESOURCES	<b>Local Co-ordinate Reference:</b>	Well GRIMM MOTOCROSS 4-65 24-23 1AH
<b>Project:</b>	ARAPAHOE COUNTY	<b>TVD Reference:</b>	KB 25' @ 5721.00usft
<b>Site:</b>	SEC 19-T4S-R64W	<b>MD Reference:</b>	KB 25' @ 5721.00usft
<b>Well:</b>	GRIMM MOTOCROSS 4-65 24-23 1AH	<b>North Reference:</b>	True
<b>Wellbore:</b>	OWB	<b>Survey Calculation Method:</b>	Minimum Curvature
<b>Design:</b>	FINAL SURVEY	<b>Database:</b>	EDM

Survey									
Measured Depth (usft)	Inclination (°)	Azimuth (°)	Vertical Depth (usft)	+N/-S (usft)	+E/-W (usft)	Vertical Section (usft)	Dogleg Rate (°/100ft)	Build Rate (°/100ft)	Turn Rate (°/100ft)
959.00	9.97	343.29	954.73	63.13	-21.37	27.20	0.84	0.74	2.40
1,054.00	10.34	347.45	1,048.25	79.33	-25.59	32.92	0.86	0.39	4.38
1,149.00	10.86	347.60	1,141.63	96.39	-29.37	38.27	0.55	0.55	0.16
1,244.00	10.19	345.85	1,235.03	113.28	-33.34	43.82	0.78	-0.71	-1.84
1,339.00	10.56	346.60	1,328.47	129.90	-37.41	49.43	0.41	0.39	0.79
1,434.00	10.15	336.31	1,421.93	146.04	-42.79	56.30	1.99	-0.43	-10.83
1,528.00	10.08	336.74	1,514.47	161.18	-49.37	64.26	0.11	-0.07	0.46
1,623.00	10.16	335.32	1,608.00	176.43	-56.15	72.45	0.28	0.08	-1.49
1,716.00	10.06	336.51	1,699.55	191.33	-62.82	80.48	0.25	-0.11	1.28
1,811.00	10.22	332.20	1,793.07	206.40	-70.05	89.09	0.82	0.17	-4.54
1,906.00	10.71	332.79	1,886.49	221.70	-78.02	98.46	0.53	0.52	0.62
2,000.00	9.41	332.08	1,979.04	236.26	-85.61	107.39	1.39	-1.38	-0.76
2,095.00	9.13	329.98	2,072.80	249.65	-93.02	116.01	0.46	-0.29	-2.21
2,190.00	8.44	328.74	2,166.69	262.13	-100.41	124.54	0.75	-0.73	-1.31
2,285.00	7.66	329.91	2,260.75	273.57	-107.20	132.38	0.84	-0.82	1.23
2,379.00	7.02	328.36	2,353.98	283.88	-113.36	139.47	0.71	-0.68	-1.65
2,474.00	6.44	328.60	2,448.32	293.37	-119.18	146.16	0.61	-0.61	0.25
2,569.00	7.85	334.33	2,542.58	303.77	-124.76	152.69	1.66	1.48	6.03
2,663.00	7.42	332.80	2,635.75	314.95	-130.32	159.27	0.51	-0.46	-1.63
2,757.00	6.22	331.32	2,729.08	324.82	-135.54	165.39	1.29	-1.28	-1.57
2,852.00	7.49	330.13	2,823.40	334.70	-141.09	171.85	1.35	1.34	-1.25
2,946.00	6.62	329.08	2,916.69	344.67	-146.93	178.59	0.94	-0.93	-1.12
3,041.00	7.81	333.62	3,010.94	355.15	-152.61	185.23	1.39	1.25	4.78
3,136.00	7.39	331.78	3,105.10	366.31	-158.36	192.01	0.51	-0.44	-1.94
3,231.00	6.78	330.65	3,199.38	376.58	-164.00	198.59	0.66	-0.64	-1.19
3,286.00	6.36	327.67	3,254.02	381.99	-167.22	202.30	0.98	-0.76	-5.42
3,345.00	5.95	325.66	3,312.68	387.28	-170.70	206.25	0.78	-0.69	-3.40
<b>SURFACE CSG - 3345' MD, 3313' TVD</b>									
3,400.00	5.58	323.53	3,367.40	391.78	-173.89	209.86	0.78	-0.68	-3.88
3,494.00	7.65	337.22	3,460.77	401.23	-179.03	215.86	2.75	2.20	14.56
3,588.00	7.20	337.28	3,553.98	412.43	-183.73	221.59	0.48	-0.48	0.06
3,683.00	9.37	336.26	3,647.99	425.00	-189.15	228.16	2.29	2.28	-1.07
3,777.00	8.67	334.97	3,740.82	438.42	-195.22	235.47	0.78	-0.74	-1.37
3,872.00	7.53	334.67	3,834.87	450.54	-200.92	242.27	1.20	-1.20	-0.32
3,967.00	6.49	332.75	3,929.16	460.94	-206.04	248.34	1.12	-1.09	-2.02
4,061.00	8.36	337.63	4,022.37	471.98	-211.07	254.39	2.10	1.99	5.19
4,156.00	7.54	337.75	4,116.46	484.14	-216.06	260.50	0.86	-0.86	0.13
4,251.00	9.40	335.47	4,210.42	496.96	-221.64	267.26	1.99	1.96	-2.40
4,345.00	8.16	334.94	4,303.31	509.99	-227.65	274.46	1.32	-1.32	-0.56
4,440.00	7.16	335.86	4,397.47	521.50	-232.93	280.80	1.06	-1.05	0.97
4,534.00	8.95	340.90	4,490.54	533.76	-237.72	286.71	2.05	1.90	5.36
4,629.00	7.71	341.05	4,584.53	546.77	-242.21	292.40	1.31	-1.31	0.16
4,723.00	6.59	340.79	4,677.80	557.83	-246.03	297.24	1.19	-1.19	-0.28

# Civitas Resources

## Survey Report

<b>Company:</b>	CRESTONE PEAK RESOURCES	<b>Local Co-ordinate Reference:</b>	Well GRIMM MOTOCROSS 4-65 24-23 1AH
<b>Project:</b>	ARAPAHOE COUNTY	<b>TVD Reference:</b>	KB 25' @ 5721.00usft
<b>Site:</b>	SEC 19-T4S-R64W	<b>MD Reference:</b>	KB 25' @ 5721.00usft
<b>Well:</b>	GRIMM MOTOCROSS 4-65 24-23 1AH	<b>North Reference:</b>	True
<b>Wellbore:</b>	OWB	<b>Survey Calculation Method:</b>	Minimum Curvature
<b>Design:</b>	FINAL SURVEY	<b>Database:</b>	EDM

Survey										
Measured Depth (usft)	Inclination (°)	Azimuth (°)	Vertical Depth (usft)	+N/-S (usft)	+E/-W (usft)	Vertical Section (usft)	Dogleg Rate (°/100ft)	Build Rate (°/100ft)	Turn Rate (°/100ft)	
4,818.00	8.56	340.25	4,771.97	569.63	-250.21	302.51	2.08	2.07	-0.57	
4,912.00	7.52	338.11	4,865.04	581.92	-254.87	308.30	1.15	-1.11	-2.28	
5,007.00	8.39	335.37	4,959.13	593.99	-260.08	314.62	1.00	0.92	-2.88	
5,102.00	7.93	335.27	5,053.16	606.24	-265.71	321.37	0.48	-0.48	-0.11	
5,197.00	6.47	338.12	5,147.41	617.16	-270.44	327.11	1.58	-1.54	3.00	
5,291.00	7.86	348.78	5,240.68	628.38	-273.67	331.37	2.04	1.48	11.34	
5,385.00	8.28	348.07	5,333.75	641.31	-276.32	335.22	0.46	0.45	-0.76	
5,480.00	7.17	346.73	5,427.89	653.77	-279.09	339.16	1.18	-1.17	-1.41	
5,575.00	10.23	331.87	5,521.79	666.99	-284.43	345.71	3.97	3.22	-15.64	
5,669.00	9.71	329.27	5,614.37	681.16	-292.42	354.99	0.73	-0.55	-2.77	
5,764.00	8.96	325.00	5,708.12	694.11	-300.76	364.51	1.07	-0.79	-4.49	
5,858.00	7.92	323.14	5,801.10	705.29	-308.84	373.60	1.14	-1.11	-1.98	
5,953.00	8.74	335.61	5,895.10	717.10	-315.75	381.59	2.08	0.86	13.13	
6,048.00	7.60	338.07	5,989.14	729.50	-321.07	388.05	1.25	-1.20	2.59	
6,142.00	6.45	338.66	6,082.43	740.19	-325.32	393.28	1.23	-1.22	0.63	
6,237.00	9.15	335.03	6,176.54	752.01	-330.45	399.49	2.89	2.84	-3.82	
6,331.00	7.98	334.84	6,269.49	764.69	-336.38	406.59	1.25	-1.24	-0.20	
6,426.00	6.05	332.77	6,363.78	775.11	-341.47	412.64	2.05	-2.03	-2.18	
6,521.00	8.70	331.70	6,457.98	785.89	-347.17	419.32	2.79	2.79	-1.13	
6,615.00	7.74	332.85	6,551.02	797.78	-353.43	426.67	1.04	-1.02	1.22	
6,710.00	6.08	332.57	6,645.32	807.94	-358.67	432.83	1.75	-1.75	-0.29	
6,805.00	8.70	330.18	6,739.52	818.64	-364.56	439.70	2.78	2.76	-2.52	
6,899.00	7.85	328.83	6,832.55	830.30	-371.42	447.62	0.93	-0.90	-1.44	
6,994.00	7.46	343.79	6,926.71	841.77	-376.50	453.76	2.13	-0.41	15.75	
7,089.00	8.45	338.46	7,020.79	854.19	-380.78	459.18	1.30	1.04	-5.61	
7,184.00	9.07	328.06	7,114.69	867.04	-387.31	466.89	1.79	0.65	-10.95	
7,210.00	10.68	316.12	7,140.31	870.51	-390.06	469.95	10.00	6.21	-45.94	
<b>KOP - 7210' MD, 7140' TVD</b>										
7,278.00	16.16	298.30	7,206.45	879.55	-402.78	483.46	10.00	8.05	-26.20	
7,373.00	23.62	281.56	7,295.79	889.66	-433.13	514.63	9.81	7.85	-17.62	
7,468.00	29.94	266.61	7,380.66	892.08	-475.53	557.07	9.68	6.65	-15.74	
7,562.00	37.09	265.86	7,458.98	888.64	-527.29	608.27	7.62	7.61	-0.80	
7,657.00	46.69	272.06	7,529.65	887.81	-590.57	671.21	10.99	10.11	6.53	
7,752.00	55.00	273.27	7,589.58	891.28	-664.09	744.73	8.80	8.75	1.27	
7,846.00	60.60	271.72	7,639.65	894.71	-743.52	824.13	6.12	5.96	-1.65	
7,941.00	70.92	272.85	7,678.60	898.19	-829.96	910.51	10.92	10.86	1.19	
8,035.00	79.32	271.65	7,702.72	901.73	-920.66	1,001.14	9.02	8.94	-1.28	
8,085.89	82.21	272.38	7,710.89	903.50	-970.85	1,051.28	5.86	5.68	1.43	
<b>-330' X-OVER PNT - 8085.89' MD, 7711' TVD, 414' FNL, 330' FEL SEC 24</b>										
8,130.00	84.72	273.00	7,715.91	905.56	-1,014.62	1,095.05	5.86	5.69	1.41	
8,170.00	85.81	273.20	7,719.21	907.71	-1,054.42	1,134.88	2.76	2.71	0.51	
<b>HZ LANDING PNT - 8170' MD, 7719' TVD</b>										
8,224.00	87.27	273.48	7,722.47	910.86	-1,108.23	1,188.75	2.76	2.71	0.51	
8,319.00	86.72	273.09	7,727.45	916.29	-1,202.95	1,283.55	0.71	-0.58	-0.41	

# Civitas Resources

## Survey Report

<b>Company:</b>	CRESTONE PEAK RESOURCES	<b>Local Co-ordinate Reference:</b>	Well GRIMM MOTOCROSS 4-65 24-23 1AH
<b>Project:</b>	ARAPAHOE COUNTY	<b>TVD Reference:</b>	KB 25' @ 5721.00usft
<b>Site:</b>	SEC 19-T4S-R64W	<b>MD Reference:</b>	KB 25' @ 5721.00usft
<b>Well:</b>	GRIMM MOTOCROSS 4-65 24-23 1AH	<b>North Reference:</b>	True
<b>Wellbore:</b>	OWB	<b>Survey Calculation Method:</b>	Minimum Curvature
<b>Design:</b>	FINAL SURVEY	<b>Database:</b>	EDM

Survey										
Measured Depth (usft)	Inclination (°)	Azimuth (°)	Vertical Depth (usft)	+N/-S (usft)	+E/-W (usft)	Vertical Section (usft)	Dogleg Rate (°/100ft)	Build Rate (°/100ft)	Turn Rate (°/100ft)	
8,414.00	87.66	271.71	7,732.11	920.27	-1,297.75	1,378.31	1.76	0.99	-1.45	
8,508.00	86.61	271.68	7,736.81	923.04	-1,391.59	1,471.99	1.12	-1.12	-0.03	
8,603.00	88.71	271.91	7,740.69	926.02	-1,486.45	1,566.72	2.22	2.21	0.24	
8,698.00	87.44	271.81	7,743.88	929.10	-1,581.35	1,661.49	1.34	-1.34	-0.11	
8,792.00	89.35	270.52	7,746.51	931.01	-1,675.29	1,755.19	2.45	2.03	-1.37	
8,887.00	90.48	270.41	7,746.65	931.78	-1,770.28	1,849.84	1.20	1.19	-0.12	
8,982.00	89.75	270.37	7,746.46	932.42	-1,865.28	1,944.48	0.77	-0.77	-0.04	
9,077.00	89.32	270.59	7,747.23	933.22	-1,960.27	2,039.13	0.51	-0.45	0.23	
9,171.00	89.21	271.52	7,748.44	934.95	-2,054.25	2,132.85	1.00	-0.12	0.99	
9,266.00	88.58	271.36	7,750.27	937.34	-2,149.20	2,227.61	0.68	-0.66	-0.17	
9,360.00	89.65	270.26	7,751.72	938.67	-2,243.17	2,321.30	1.63	1.14	-1.17	
9,454.00	89.82	271.09	7,752.16	939.77	-2,337.17	2,414.98	0.90	0.18	0.88	
9,549.00	88.67	270.14	7,753.41	940.79	-2,432.15	2,509.64	1.57	-1.21	-1.00	
9,644.00	90.69	269.99	7,753.94	940.90	-2,527.14	2,604.22	2.13	2.13	-0.16	
9,738.00	90.20	269.36	7,753.21	940.37	-2,621.14	2,697.75	0.85	-0.52	-0.67	
9,833.00	90.74	269.20	7,752.43	939.17	-2,716.13	2,792.21	0.59	0.57	-0.17	
9,927.00	90.77	271.36	7,751.19	939.63	-2,810.11	2,885.83	2.30	0.03	2.30	
10,022.00	90.87	270.25	7,749.83	940.97	-2,905.09	2,980.51	1.17	0.11	-1.17	
10,117.00	88.33	271.43	7,750.49	942.36	-3,000.07	3,075.20	2.95	-2.67	1.24	
10,212.00	87.90	270.54	7,753.62	943.99	-3,095.00	3,169.87	1.04	-0.45	-0.94	
10,306.00	88.54	272.34	7,756.54	946.35	-3,188.92	3,263.60	2.03	0.68	1.91	
10,401.00	87.47	271.61	7,759.85	949.63	-3,283.81	3,358.37	1.36	-1.13	-0.77	
10,496.00	89.49	272.20	7,762.37	952.78	-3,378.72	3,453.16	2.22	2.13	0.62	
10,590.00	89.17	271.91	7,763.46	956.15	-3,472.65	3,547.00	0.46	-0.34	-0.31	
10,684.00	90.26	273.42	7,763.93	960.52	-3,566.54	3,640.88	1.98	1.16	1.61	
10,779.00	90.95	273.51	7,762.93	966.27	-3,661.36	3,735.83	0.73	0.73	0.09	
10,873.00	89.90	271.84	7,762.23	970.65	-3,755.25	3,829.71	2.10	-1.12	-1.78	
10,968.00	90.81	271.80	7,761.64	973.67	-3,850.20	3,924.53	0.96	0.96	-0.04	
11,063.00	89.84	269.76	7,761.10	974.96	-3,945.19	4,019.21	2.38	-1.02	-2.15	
11,157.00	90.18	269.14	7,761.09	974.06	-4,039.18	4,112.71	0.75	0.36	-0.66	
11,252.00	89.53	267.61	7,761.33	971.37	-4,134.14	4,207.00	1.75	-0.68	-1.61	
11,346.00	90.44	269.97	7,761.35	969.38	-4,228.11	4,300.37	2.69	0.97	2.51	
11,441.00	91.04	269.86	7,760.13	969.24	-4,323.10	4,394.93	0.64	0.63	-0.12	
11,536.00	88.62	269.57	7,760.41	968.77	-4,418.09	4,489.46	2.57	-2.55	-0.31	
11,630.00	88.11	269.60	7,763.09	968.09	-4,512.05	4,582.94	0.54	-0.54	0.03	
11,725.00	87.27	269.61	7,766.92	967.43	-4,606.97	4,677.38	0.88	-0.88	0.01	
11,820.00	87.30	269.81	7,771.42	966.95	-4,701.86	4,771.81	0.21	0.03	0.21	
11,915.00	86.54	269.58	7,776.52	966.45	-4,796.73	4,866.20	0.84	-0.80	-0.24	
12,009.00	89.28	271.81	7,779.95	967.59	-4,890.64	4,959.81	3.76	2.91	2.37	
12,104.00	88.96	271.10	7,781.41	970.00	-4,985.60	5,054.58	0.82	-0.34	-0.75	
12,198.00	90.41	272.83	7,781.93	973.22	-5,079.54	5,148.40	2.40	1.54	1.84	
12,293.00	90.99	272.66	7,780.77	977.77	-5,174.42	5,243.30	0.64	0.61	-0.18	
12,388.00	90.52	271.19	7,779.52	980.96	-5,269.35	5,338.11	1.62	-0.49	-1.55	

# Civitas Resources

## Survey Report

<b>Company:</b>	CRESTONE PEAK RESOURCES	<b>Local Co-ordinate Reference:</b>	Well GRIMM MOTOCROSS 4-65 24-23 1AH
<b>Project:</b>	ARAPAHOE COUNTY	<b>TVD Reference:</b>	KB 25' @ 5721.00usft
<b>Site:</b>	SEC 19-T4S-R64W	<b>MD Reference:</b>	KB 25' @ 5721.00usft
<b>Well:</b>	GRIMM MOTOCROSS 4-65 24-23 1AH	<b>North Reference:</b>	True
<b>Wellbore:</b>	OWB	<b>Survey Calculation Method:</b>	Minimum Curvature
<b>Design:</b>	FINAL SURVEY	<b>Database:</b>	EDM

Survey									
Measured Depth (usft)	Inclination (°)	Azimuth (°)	Vertical Depth (usft)	+N/-S (usft)	+E/-W (usft)	Vertical Section (usft)	Dogleg Rate (°/100ft)	Build Rate (°/100ft)	Turn Rate (°/100ft)
12,483.00	90.48	270.66	7,778.69	982.50	-5,364.34	5,432.82	0.56	-0.04	-0.56
12,577.00	90.59	269.89	7,777.81	982.95	-5,458.33	5,526.44	0.83	0.12	-0.82
12,620.00	90.03	269.96	7,777.57	982.89	-5,501.33	5,569.25	1.31	-1.30	0.17
<b>ENTER FED TRACT - 12620' MD, 7778' TVD</b>									
12,766.00	88.14	270.21	7,779.90	983.11	-5,647.31	5,714.60	1.31	-1.30	0.17
12,861.00	87.84	269.40	7,783.23	982.79	-5,742.25	5,809.09	0.91	-0.32	-0.85
12,955.00	87.30	269.40	7,787.22	981.81	-5,836.16	5,902.50	0.57	-0.57	0.00
13,050.00	87.19	270.39	7,791.79	981.63	-5,931.04	5,996.95	1.05	-0.12	1.04
13,145.00	88.71	272.35	7,795.19	983.90	-6,025.95	6,091.65	2.61	1.60	2.06
13,239.00	88.56	271.95	7,797.42	987.43	-6,119.86	6,185.47	0.45	-0.16	-0.43
13,334.00	89.75	271.71	7,798.83	990.46	-6,214.80	6,280.28	1.28	1.25	-0.25
13,405.00	89.61	271.06	7,799.22	992.18	-6,285.77	6,351.11	0.94	-0.20	-0.91
<b>EXIT FED TRACT - 13405' MD, 7799' TVD</b>									
13,428.00	89.56	270.85	7,799.39	992.56	-6,308.77	6,374.04	0.94	-0.20	-0.91
13,523.00	89.45	270.30	7,800.21	993.51	-6,403.76	6,468.70	0.59	-0.12	-0.58
13,617.00	89.01	269.51	7,801.48	993.36	-6,497.75	6,562.26	0.96	-0.47	-0.84
13,712.00	88.76	269.40	7,803.32	992.46	-6,592.73	6,656.74	0.29	-0.26	-0.12
13,807.00	90.05	271.52	7,804.31	993.22	-6,687.71	6,751.37	2.61	1.36	2.23
13,902.00	88.84	270.10	7,805.23	994.56	-6,782.70	6,846.06	1.96	-1.27	-1.49
13,996.00	90.18	270.82	7,806.03	995.32	-6,876.69	6,939.71	1.62	1.43	0.77
14,091.00	89.74	270.63	7,806.10	996.52	-6,971.68	7,034.40	0.50	-0.46	-0.20
14,186.00	89.41	270.15	7,806.81	997.16	-7,066.67	7,129.03	0.61	-0.35	-0.51
14,280.00	88.87	269.56	7,808.22	996.93	-7,160.66	7,222.59	0.85	-0.57	-0.63
14,375.00	90.02	270.33	7,809.14	996.84	-7,255.65	7,317.15	1.46	1.21	0.81
14,470.00	90.18	270.16	7,808.97	997.24	-7,350.65	7,411.77	0.25	0.17	-0.18
14,564.00	89.70	269.91	7,809.07	997.30	-7,444.65	7,505.36	0.58	-0.51	-0.27
14,659.00	89.23	269.15	7,809.96	996.52	-7,539.64	7,599.86	0.94	-0.49	-0.80
14,754.00	89.08	271.29	7,811.36	996.88	-7,634.63	7,694.46	2.26	-0.16	2.25
14,848.00	89.21	272.21	7,812.76	999.76	-7,728.57	7,788.26	0.99	0.14	0.98
14,943.00	88.68	272.40	7,814.51	1,003.58	-7,823.48	7,883.11	0.59	-0.56	0.20
15,038.00	91.12	272.60	7,814.68	1,007.72	-7,918.38	7,977.98	2.58	2.57	0.21
15,133.00	91.49	272.36	7,812.51	1,011.83	-8,013.27	8,072.83	0.46	0.39	-0.25
15,228.00	89.95	270.57	7,811.32	1,014.26	-8,108.22	8,167.60	2.49	-1.62	-1.88
15,322.00	89.68	270.91	7,811.62	1,015.47	-8,202.21	8,261.29	0.46	-0.29	0.36
15,417.00	89.32	269.92	7,812.45	1,016.16	-8,297.21	8,355.93	1.11	-0.38	-1.04
15,512.00	89.14	269.65	7,813.73	1,015.80	-8,392.20	8,450.47	0.34	-0.19	-0.28
15,606.00	89.41	269.16	7,814.92	1,014.83	-8,486.18	8,543.95	0.60	0.29	-0.52
15,701.00	89.88	269.38	7,815.51	1,013.62	-8,581.17	8,638.41	0.55	0.49	0.23
15,796.00	90.46	268.98	7,815.22	1,012.26	-8,676.16	8,732.85	0.74	0.61	-0.42
15,890.00	88.88	269.11	7,815.76	1,010.69	-8,770.15	8,826.27	1.69	-1.68	0.14
15,985.00	89.95	269.24	7,816.73	1,009.32	-8,865.13	8,920.71	1.13	1.13	0.14
16,080.00	90.07	271.32	7,816.72	1,009.79	-8,960.12	9,015.33	2.19	0.13	2.19
16,175.00	89.38	270.67	7,817.17	1,011.44	-9,055.11	9,110.05	1.00	-0.73	-0.68
16,269.00	88.36	270.15	7,819.03	1,012.11	-9,149.08	9,203.68	1.22	-1.09	-0.55

# Civitas Resources

## Survey Report

<b>Company:</b>	CRESTONE PEAK RESOURCES	<b>Local Co-ordinate Reference:</b>	Well GRIMM MOTOCROSS 4-65 24-23 1AH
<b>Project:</b>	ARAPAHOE COUNTY	<b>TVD Reference:</b>	KB 25' @ 5721.00usft
<b>Site:</b>	SEC 19-T4S-R64W	<b>MD Reference:</b>	KB 25' @ 5721.00usft
<b>Well:</b>	GRIMM MOTOCROSS 4-65 24-23 1AH	<b>North Reference:</b>	True
<b>Wellbore:</b>	OWB	<b>Survey Calculation Method:</b>	Minimum Curvature
<b>Design:</b>	FINAL SURVEY	<b>Database:</b>	EDM

Survey										
Measured Depth (usft)	Inclination (°)	Azimuth (°)	Vertical Depth (usft)	+N/-S (usft)	+E/-W (usft)	Vertical Section (usft)	Dogleg Rate (°/100ft)	Build Rate (°/100ft)	Turn Rate (°/100ft)	
16,364.00	90.33	273.19	7,820.11	1,014.88	-9,244.02	9,298.45	3.81	2.07	3.20	
16,458.00	90.40	273.71	7,819.52	1,020.53	-9,337.85	9,392.40	0.56	0.07	0.55	
16,553.00	91.19	273.35	7,818.20	1,026.38	-9,432.66	9,487.34	0.91	0.83	-0.38	
16,648.00	89.34	271.35	7,817.76	1,030.28	-9,527.57	9,582.20	2.87	-1.95	-2.11	
16,743.00	89.07	271.58	7,819.08	1,032.71	-9,622.53	9,676.97	0.37	-0.28	0.24	
16,837.00	88.38	271.08	7,821.17	1,034.89	-9,716.48	9,770.71	0.91	-0.73	-0.53	
16,932.00	87.93	270.18	7,824.23	1,035.93	-9,811.42	9,865.33	1.06	-0.47	-0.95	
17,027.00	88.39	270.79	7,827.28	1,036.73	-9,906.37	9,959.93	0.80	0.48	0.64	
17,121.00	88.72	270.53	7,829.65	1,037.82	-10,000.33	10,053.59	0.45	0.35	-0.28	
17,216.00	88.65	271.23	7,831.83	1,039.28	-10,095.30	10,148.27	0.74	-0.07	0.74	
17,311.00	89.14	270.70	7,833.66	1,040.88	-10,190.27	10,242.97	0.76	0.52	-0.56	
17,405.00	88.53	269.96	7,835.57	1,041.42	-10,284.24	10,336.58	1.02	-0.65	-0.79	
17,500.00	88.75	269.00	7,837.83	1,040.55	-10,379.21	10,431.05	1.04	0.23	-1.01	
17,595.00	88.67	268.45	7,839.96	1,038.44	-10,474.16	10,525.39	0.58	-0.08	-0.58	
17,689.00	89.47	268.75	7,841.49	1,036.15	-10,568.12	10,618.72	0.91	0.85	0.32	
17,784.00	89.00	267.15	7,842.76	1,032.75	-10,663.05	10,712.91	1.76	-0.49	-1.68	
17,879.00	89.72	267.45	7,843.82	1,028.27	-10,757.94	10,806.96	0.82	0.76	0.32	
<b>LAST SURVEY - 17879' MD, 7844' TVD</b>										
17,989.00	89.72	267.45	7,844.36	1,023.38	-10,867.83	10,915.90	0.00	0.00	0.00	
<b>PTB - 17989' MD, 7844' TVD, 412' FNL, 331' FWL SEC 23</b>										

Design Targets										
Target Name	Dip Angle (°)	Dip Dir. (°)	TVD (usft)	+N/-S (usft)	+E/-W (usft)	Northing (usft)	Easting (usft)	Latitude	Longitude	
EXIT FED TRACT @ 13	0.00	0.00	7,629.00	1,026.58	-6,230.00	1,679,391.70	3,246,720.44	39.695462°N	104.623228°W	- actual wellpath misses target center by 173.60usft at 13349.12usft MD (7798.90 TVD, 990.89 N, -6229.91 E)
- Shape										- Point
ENTER FED TRACT @	0.00	0.00	7,629.00	1,018.17	-5,530.00	1,679,390.21	3,247,420.49	39.695440°N	104.620741°W	- actual wellpath misses target center by 152.79usft at 12646.35usft MD (7777.64 TVD, 982.89 N, -5527.68 E)
- Shape										- Point
LP-GRIMM MOTOCRO	0.00	0.00	7,730.00	957.32	-970.85	1,679,374.48	3,251,979.97	39.695274°N	104.604539°W	- actual wellpath misses target center by 56.91usft at 8090.57usft MD (7711.51 TVD, 903.70 N, -975.48 E)
- Shape										- Point
PBHL-GRIMM MOTO	0.00	0.00	7,835.00	1,075.09	-10,868.36	1,679,394.30	3,242,081.89	39.695591°N	104.639711°W	- actual wellpath misses target center by 52.52usft at 17987.18usft MD (7844.35 TVD, 1023.46 N, -10866.01 E)
- Shape										- Point

# Civitas Resources

## Survey Report

<b>Company:</b> CRESTONE PEAK RESOURCES	<b>Local Co-ordinate Reference:</b> Well GRIMM MOTOCROSS 4-65 24-23 1AH
<b>Project:</b> ARAPAHOE COUNTY	<b>TVD Reference:</b> KB 25' @ 5721.00usft
<b>Site:</b> SEC 19-T4S-R64W	<b>MD Reference:</b> KB 25' @ 5721.00usft
<b>Well:</b> GRIMM MOTOCROSS 4-65 24-23 1AH	<b>North Reference:</b> True
<b>Wellbore:</b> OWB	<b>Survey Calculation Method:</b> Minimum Curvature
<b>Design:</b> FINAL SURVEY	<b>Database:</b> EDM

Design Annotations				
Measured Depth (usft)	Vertical Depth (usft)	Local Coordinates		Comment
		+N/-S (usft)	+E/-W (usft)	
3,345.00	3,312.68	387.28	-170.70	SURFACE CSG - 3345' MD, 3313' TVD
7,210.00	7,140.31	870.51	-390.06	KOP - 7210' MD, 7140' TVD
8,085.89	7,710.89	903.50	-970.85	~330' X-OVER PNT - 8085.89' MD, 7711' TVD, 414' FNL, 330' FEL SEC 24
8,170.00	7,719.21	907.71	-1,054.42	HZ LANDING PNT - 8170' MD, 7719' TVD
12,620.00	7,777.57	982.89	-5,501.33	ENTER FED TRACT - 12620' MD, 7778' TVD
13,405.00	7,799.22	992.18	-6,285.77	EXIT FED TRACT - 13405' MD, 7799' TVD
17,879.00	7,843.82	1,028.27	-10,757.94	LAST SURVEY - 17879' MD, 7844' TVD
17,989.00	7,844.36	1,023.38	-10,867.83	PTB - 17989' MD, 7844' TVD, 412' FNL, 331' FWL SEC 23

Checked By: _____	Approved By: _____	Date: _____
-------------------	--------------------	-------------