



Company : Crestone Peak Resources
 Rig : 572
 Well : Lussing Trust 4-55 19-20 2BH

County/Parish : DJ Basin
 State/Province : Colorado
 Well ID : 05-005-07566-00

Country : USA
 Field : DJ Basin
 Location : 39.692481
 Well : Lussing Trust 4-65 19-20 2BH
 Company : Crestone Peak Resources
 Rig : 572

Latitude : -104.601090
 Longitude : -99.692481
 Permanent Datum : MSL
 Elevation : 0
 Log Measured From : RMB

Depth Logged : 3940
 Date Logged : 08/07/2024
 Total Depth MD : 6288.00
 TVD : -999.25

Job Number : Lussing Trust 4-54 19-20 2BH
 Standard Date : 08/07/2024

Run	2	Run Size	8.5	Run From	3340	Run To	16288
Run		Run Size		Run From		Run To	
Run		Run Size		Run From		Run To	

Run		Run Size		Run From		Run To	
Run		Run Size		Run From		Run To	
Run		Run Size		Run From		Run To	

DISCLAIMER
 Total Directional does not guarantee the accuracy or correctness of interpretations in or from this log. Since all interpretations are opinions based on measurements Total Directional shall under no circumstance be responsible for consequential damages or and other losses, cost or expense incurred or sustained in connection with the use of such interpretations.

LOGGING SUMMARY

Log Run	1
Bit Run	1
Hole Size (in)	8.50
Sensor Suite	WPR
Measured Depth	
In Hole From	3336
In Hole To	18268.8
Log From	3336.00
Log To	7145.62
Date/Time	
In Hole Date	2024-08-08
In Hole Time	08:03:07
Out Hole Date	2024-08-10
Out Hole Time	13:11:34
Begin Log Date	2024-08-08
Begin Log Time	08:03:07
End Log Date	2024-08-10
End Log Time	13:11:33
LWD Engineer	LONDON COX
Oil Company Rep	JOSH JOHNSON

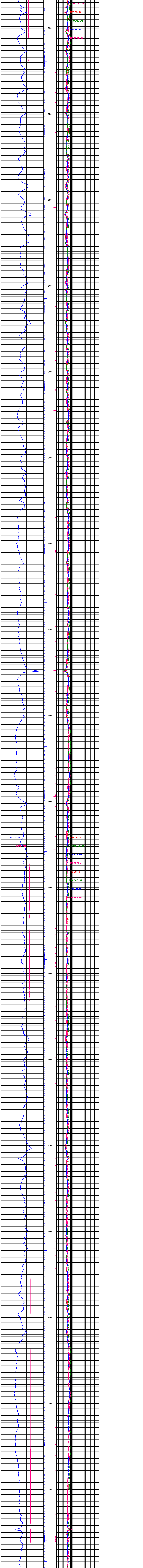
DRILLING FLUID SUMMARY

Mud Type	OBM
Density (lb/gal)	9.60
Plastic Viscosity	41
Chlorides	46000
Oil/Water Ratio	800.0
Maximum Circ Temp (F)	225

CORRECTIONS

Log Run	1
Start Date/Time	2024-08-08 08:04:39
Start Depth (ft)	3336
End Date/Time	2024-08-10 13:11:56
End Depth (ft)	18268.8
Gamma Ray Corrections	
Collar Correction	2.238
Mud Density (lb/gal)	12
Mud Correction	1.561
Calibration	1.35
%K	0
WPR Corrections	
Effective Hole Diam (in)	8.5
Surface Rm (ohm-m)	1000
Surface Mud Temp (F)	60
Bottom Hole Circ Temp (F)	60
Rm @ BHT	1000

Directional Surveys



Resistivity Compensation Temperature	TRMRAC
Conductivity Phase Diff. BHC 400 kHz Long	CPCECLM
mmho (0.20 ft Smoothing)	1000

Resistivity Phase Diff. BHC 2 Mhz Short	RPCECSHM
ohm-m	2000

Resistivity Phase Diff. BHC 400 kHz Long	RPCECLM
ohm-m	2000

Resistivity Phase Diff. BHC 400 kHz Short	RPCECHM
ohm-m	2000

Resistivity Phase Diff. BHC 2 Mhz Long	RPCECHM
ohm-m	2000

Resistivity Atten. BHC 400 kHz Long	RACECLM
ohm-m	2000

Resistivity Atten. BHC 2 Mhz Short	RACECSHM
ohm-m	2000

Resistivity Atten. BHC 400 kHz Short	RACECSLM
ohm-m	2000

Resistivity Atten. BHC 2 Mhz Long	RACECLM
ohm-m	2000

Resistivity Compensation Temperature	TRMRAC
Conductivity Phase Diff. BHC 400 kHz Long	CPCECLM
mmho (0.20 ft Smoothing)	1000

Resistivity Phase Diff. BHC 2 Mhz Short	RPCECSHM
ohm-m	2000

Resistivity Phase Diff. BHC 400 kHz Long	RPCECLM
ohm-m	2000

Resistivity Phase Diff. BHC 400 kHz Short	RPCECHM
ohm-m	2000

Resistivity Phase Diff. BHC 2 Mhz Long	RPCECHM
ohm-m	2000

Resistivity Atten. BHC 400 kHz Long	RACECLM
ohm-m	2000

Resistivity Atten. BHC 2 Mhz Short	RACECSHM
ohm-m	2000

Resistivity Atten. BHC 400 kHz Short	RACECSLM
ohm-m	2000

Resistivity Atten. BHC 2 Mhz Long	RACECLM
ohm-m	2000

Resistivity Compensation Temperature	TRMRAC
Conductivity Phase Diff. BHC 400 kHz Long	CPCECLM
mmho (0.20 ft Smoothing)	1000

Resistivity Phase Diff. BHC 2 Mhz Short	RPCECSHM
ohm-m	2000

Resistivity Phase Diff. BHC 400 kHz Long	RPCECLM
ohm-m	2000

Resistivity Phase Diff. BHC 400 kHz Short	RPCECHM
ohm-m	2000

Resistivity Phase Diff. BHC 2 Mhz Long	RPCECHM
ohm-m	2000

Resistivity Atten. BHC 400 kHz Long	RACECLM
ohm-m	2000

Resistivity Atten. BHC 2 Mhz Short	RACECSHM
ohm-m	2000

Resistivity Atten. BHC 400 kHz Short	RACECSLM
ohm-m	2000

Resistivity Atten. BHC 2 Mhz Long	RACECLM
ohm-m	2000

Resistivity Compensation Temperature	TRMRAC
Conductivity Phase Diff. BHC 400 kHz Long	CPCECLM
mmho (0.20 ft Smoothing)	1000

Resistivity Phase Diff. BHC 2 Mhz Short	RPCECSHM
ohm-m	2000

Resistivity Phase Diff. BHC 400 kHz Long	RPCECLM
ohm-m	2000

Resistivity Phase Diff. BHC 400 kHz Short	RPCECHM
ohm-m	2000

Resistivity Phase Diff. BHC 2 Mhz Long	RPCECHM
ohm-m	2000

Resistivity Atten. BHC 400 kHz Long	RACECLM
ohm-m	2000

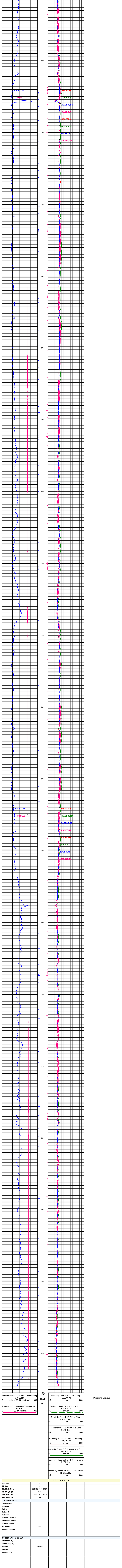
Resistivity Atten. BHC 2 Mhz Short	RACECSHM
ohm-m	2000

Resistivity Atten. BHC 400 kHz Short	RACECSLM
ohm-m	2000

Resistivity Atten. BHC 2 Mhz Long	RACECLM
ohm-m	2000

Resistivity Compensation Temperature	TRMRAC
Conductivity Phase Diff. BHC 400 kHz Long	CPCECLM
mmho (0.20 ft Smoothing)	1000

Resistivity Phase Diff. BHC 2 Mhz Short	RPCECSHM
ohm-m	2000



Log Run
 Bit Run
 Start Date/Time
 End Date/Time
 Start Depth (ft)
 End Depth (ft)
 Serial Numbers
 Surface Gear
 Flow Sub
 Pulsar
 Battery 1
 Battery 2
 Turbine Alternator
 Directional Sensor
 Gamma Sensor
 WPR Sensor
 Vibration Sensor

Resistivity Phase Diff. BHC 400 kHz Long
 CPCECLM
 mmho (0.20 ft Smoothing) 1000

Resistivity Compensation Temperature
 TRWRAC
 F (1.00 ft Smoothing) 300

Resistivity Atten. BHC 2 MHz Long
 RACECHM
 ohm-m 2000

Resistivity Atten. BHC 400 kHz Short
 RACECSLM
 ohm-m 2000

Resistivity Atten. BHC 2 MHz Short
 RACECSHM
 ohm-m 2000

Resistivity Atten. BHC 400 kHz Long
 RACECLM
 ohm-m 2000

Resistivity Phase Diff. BHC 2 MHz Long
 RPCECHM
 ohm-m 2000

Resistivity Phase Diff. BHC 400 kHz Short
 RPCECSHM
 ohm-m 2000

Resistivity Phase Diff. BHC 400 kHz Long
 RPCECLM
 ohm-m 2000

Resistivity Phase Diff. BHC 2 MHz Short
 RPCECSHM
 ohm-m 2000

EQUIPMENT	
Log Run	1
Bit Run	1
Start Date/Time	2024-08-08 08:03:07
End Date/Time	2024-08-10 13:11:34
Start Depth (ft)	3336
End Depth (ft)	18268.8
Serial Numbers	
Surface Gear	
Flow Sub	
Pulsar	
Battery 1	
Battery 2	
Turbine Alternator	
Directional Sensor	
Gamma Sensor	
WPR Sensor	892
Vibration Sensor	
Sensor Offsets To Bit	
Directional (ft)	
Gamma Ray (ft)	
WPR (ft)	1123.18
PWD (ft)	
Vibration (ft)	

EQUIPMENT	
Log Run	1
Bit Run	1
Start Date/Time	2024-08-08 08:03:07
End Date/Time	2024-08-10 13:11:34
Start Depth (ft)	3336
End Depth (ft)	18268.8
Serial Numbers	
Surface Gear	
Flow Sub	
Pulsar	
Battery 1	
Battery 2	
Turbine Alternator	
Directional Sensor	
Gamma Sensor	
WPR Sensor	892
Vibration Sensor	
Sensor Offsets To Bit	
Directional (ft)	
Gamma Ray (ft)	
WPR (ft)	1123.18
PWD (ft)	
Vibration (ft)	