

**BNL (ENTERPRISE) INC.**  
JACKSON 29 SWNW 3054  
SWNW, SECTION 29, T30S, R54W, 6th PM  
REVISED DATE: 4/9/24 - JMB

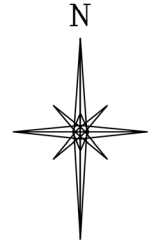
DISTANCE FROM WORKING PAD SURFACE <u>304b(3)A</u>																		
	BUILDING		RESIDENTIAL BUILDING UNIT		HIGH OCCUPANCY BUILDING UNIT		SCHOOL FACILITY		DOAA		PUBLIC ROAD		ABOVE GROUND UTLITY		RAILROAD		PROPERTY LINE	
	DIRECTION	LENGTH	DIRECTION	LENGTH	DIRECTION	LENGTH	DIRECTION	LENGTH	DIRECTION	LENGTH	DIRECTION	LENGTH	DIRECTION	LENGTH	DIRECTION	LENGTH	DIRECTION	LENGTH
WPS	SE	5280'	SE	5280'	N	5280'	N	5280'	N	5280'	SE	5280'	NW	5280'	NW	5280'	W	706'
					DISTANCE FROM WORKING PAD SURFACE - DISPROPORTIONATELY IMPACTED COMMUNITY													
							RESIDENTIAL BUILDING UNIT		HIGH OCCUPANCY BUILDING UNIT		SCHOOL FACILITY							
					WPS		DIRECTION	LENGTH	DIRECTION	LENGTH	DIRECTION	LENGTH						
							-	0'	-	0'	-	0'						

CULTURAL FEATURE INFORMATION <u>304b(3)B</u>			
CULTURAL FEATURE	0-500 FEET		501 - 1,000 FEET
	NUMBER		NUMBER
BUILDING UNIT	0		0
RESIDENTIAL BUILDING UNIT	0		0
HIGH OCCUPANCY BUILDING UNIT	0		0
SCHOOL PROPERTIES	0		0
SCHOOL FACILITIES	0		0
DESIGNATED OUTDOOR ACTIVITY AREA	0		0
SCHOOL WITHIN DISPROPORTIONALLY IMPACTED COMMUNITY	0		0

DISTANCE FROM WELL HEAD																		
WELL NAME	BUILDING		RESIDENTIAL BUILDING		HIGH OCCUPANCY		SCHOOL FACILITY		DOAA		PUBLIC ROAD		ABOVE GROUND UTLITY		RAILROAD		PROPERTY LINE	
	DIRECTION	LENGTH	DIRECTION	LENGTH	DIRECTION	LENGTH	DIRECTION	LENGTH	DIRECTION	LENGTH	DIRECTION	LENGTH	DIRECTION	LENGTH	DIRECTION	LENGTH	DIRECTION	LENGTH
JACKSON 29 SWNW 3054	SE	5280'	SE	5280'	N	5280'	N	5280'	N	5280'	SE	5280'	NW	5280'	NW	5280'	W	802'

**R. 54 W.**

N 40°13'12" E 5441.69'  
TO DRG CP 21 3054



GRID NORTH  
SCALE' 1" = 1000'  
500' 0 1000'

**T. 30 S.**

**JACKSON 29**  
**SWNW 3054**  
UNGRADED ELEVATION:  
5539.8'

**SHL**

**LATITUDE (NAD 83)**

NORTH 37.403592 DEG.

**LONGITUDE (NAD 83)**

WEST 103.490913 DEG.

**NORTHING (NAD 83)**

1274604.12

**EASTING (NAD 83)**

3583542.43

**BASIS OF BEARINGS,  
ELEVATIONS & DATUM**

SPCS COLORADO SOUTH NAD 27 BASED  
ON GPS OBSERVATIONS AND OPUS  
SOLUTION ON 1 1/2 IN. ALUM. CAP ON  
No. 5 REBAR DRG CONTROL POINTS  
"CP 21 3054" HAVING A NAD83(2011)

POSITION OF:

LAT 37° 25' 14.50" NORTH

LONG 103° 27' 47.69" WEST

NAVD88 ELEVATION: 5538.59'

"CP 35 2954" HAVING A NAD83(2011)

POSITION OF:

LAT 37° 28' 39.68" NORTH

LONG 103° 26' 15.82" WEST

NAVD88 ELEVATION: 5309.79'

BEARINGS HEREIN RELATIVE TO GRID  
BEARING BETWEEN SAID POINTS:  
N18°23'17"E

**PROTRACTED SECTION**

**29**

2041'

812'

**NOTES**

1. GPS OPERATOR J. MONTOYA OBSERVED A PDOP OF 1.7.
2. ALL GPS OBSERVATIONS ARE IN COMPLIANCE WITH COGCC RULE No.215.
3. EXISTING IMPROVEMENTS WITHIN 2000' OF LOCATION. SEE LOC. DRAWING.
4. SURROUNDING SURFACE USE IS NATIVE BRUSH, NON CROP RANGELAND.

**LEGEND**



WELL LOCATION



DENOTES 90° TIE



PROTRACTED QUADRANGLE  
INTERSECTION LOCATION

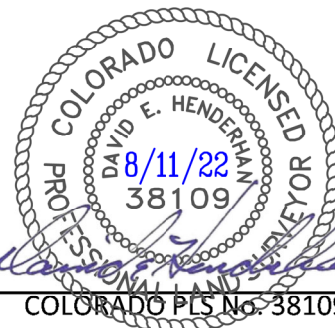


BLM LEASE LINE

**SURVEYOR'S STATEMENT**

I, DAVID E. HENDERHAN, AN EMPLOYEE AND AGENT ON BEHALF OF D.R. GRIFFIN & ASSOCIATES, INC. STATE THE PLAT HEREON IS A CORRECT REPRESENTATION OF A SURVEY MADE UNDER MY SUPERVISION ON THE 29th DAY OF MARCH, 2022 OF THE SHOWN JACKSON 29 SWNW 3054 AND THAT THE LOCATION HAS BEEN STAKED ON THE GROUND AS SHOWN ON THIS PLAT.

Notice: In accordance with Colorado State Law, any legal action based upon any defect in this survey plat must commence within three (3) years after first discovery of such defect. In no event, may any action based upon any defect in this survey plat be commenced more than ten (10) years from the date of certification shown hereon.



**JACKSON 29 SWNW 3054**

COLORADO PLS No. 38109

**DRG** **RIFFIN & ASSOCIATES, INC.**  
(307) 362-5028 1414 ELK ST., ROCK SPRINGS, WY 82901

DRAWN: 8/1/22 - EMB

SCALE: 1" = 1000'

REVISED: NA

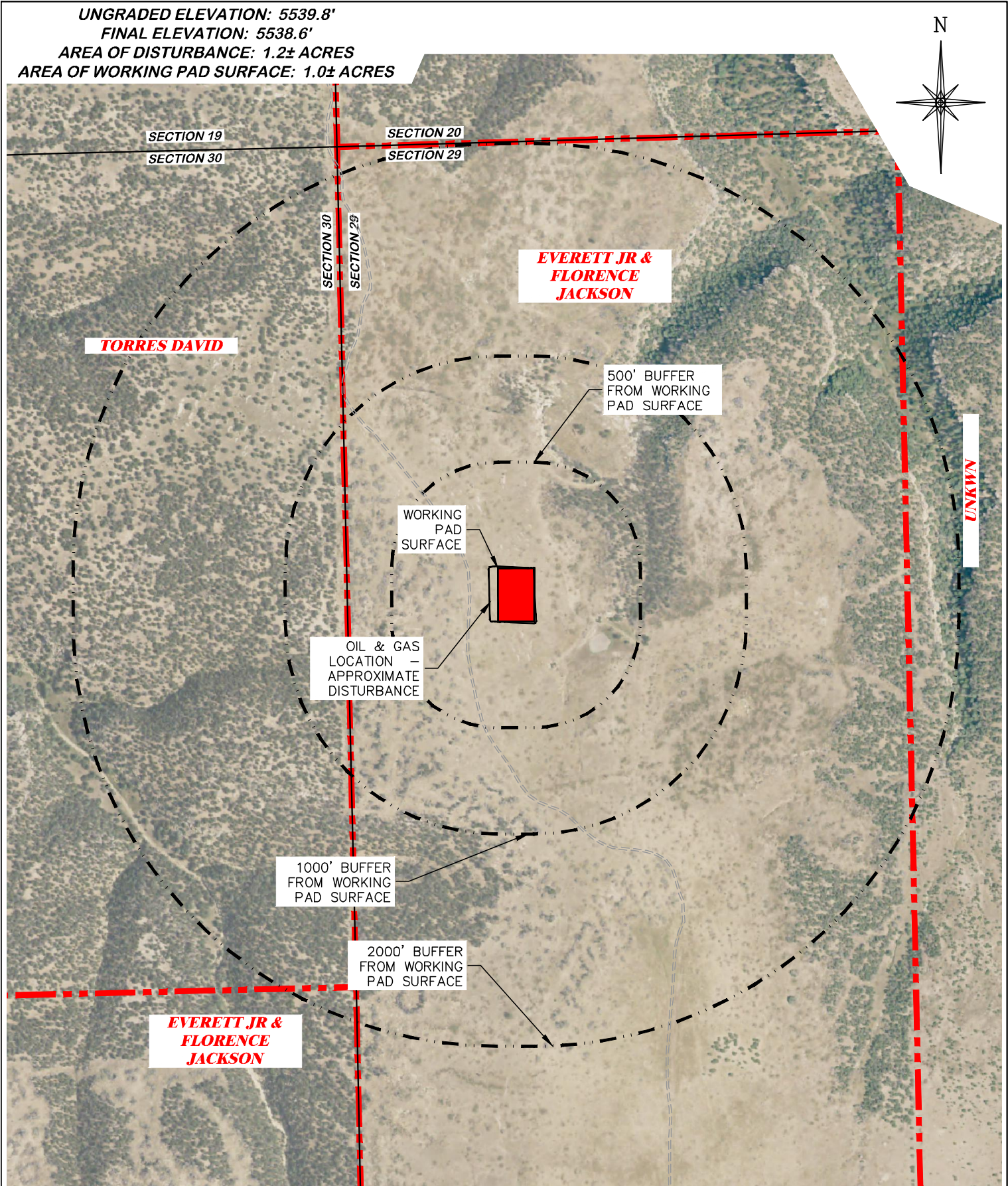
DRG JOB No. 22225

EXHIBIT A

**PLAT OF DRILLING LOCATION IN  
SWNW, SECTION 29, FOR  
BNL (ENTERPRISE) INC.**

**2041' F/NL, & 812' F/WL, SECTION 29,  
T. 30 S., R. 54 W., 6TH P.M.,  
LAS ANIMAS COUNTY, COLORADO**






CULTURAL ITEMS: MEASURED FROM NEAREST EDGE OF THE PROPOSED WORKING PAD SURFACE	
BUILDING	5280'+ SE
RESIDENTIAL BUILDING	5280'+ SE
HIGH OCCUPANCY BUILDING	5280'+ N
DOAA	5280'+ N
PUBLIC ROAD	5280'+ SE
ABOVE GROUND UTILITY	5280'+ NW
RAILROAD	5280'+ NW
PROPERTY LINE	706' W
SCHOOL FACILITY	5280'+ N
SCHOOL PROPERTY LINE	5280'+ N
CHILDCARE FACILITY	5280'+ N
CHILDCARE PROPERTY LINE	5280'+ N
DI COMMUNITY	0'

PRODUCTION FEATURE	CULTURAL FEATURE INFORMATION		
	0-500 FEET NUMBER	501 - 1,000 FEET NUMBER	1,001 - 2,000 FEET NUMBER
BUILDING	0	0	0
RESIDENTIAL BUILDING	0	0	0
HIGH OCCUPANCY BUILDING	0	0	0
SCHOOL PROPERTIES	0	0	0
SCHOOL FACILITIES	0	0	0
DOAA	0	0	0



JACKSON 29 SWNW 3054



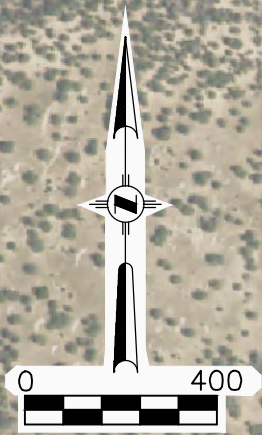
**DRG** RIFFIN & ASSOCIATES, INC.  
(307) 362-5028 1414 ELK ST., ROCK SPRINGS, WY 82901

DRAWN: 8/1/22 - EMB	SCALE: 1" = 600'
REVISED: 4/9/24 - JMB	DRG JOB No. 22225
UPDATED TABLE	304b(3)C CULTURAL

**CULTURAL DISTANCES DRAWING**

**CULTURAL DISTANCES  
BNL (ENTERPRISE) INC.  
JACKSON 29 SWNW 3054  
SWNW, SECTION 29, T. 30 S., R. 54 W., 6th P.M.,  
LAS ANIMAS COUNTY, COLORADO**





**VIEW NORTH**

**VIEW WEST**

**VIEW EAST**


**VIEW SOUTH**

**AERIAL PHOTO SOURCE**  
AERIAL PHOTOGRAMMETRY  
TAKEN FROM BING IMAGES

**PAD LOCATION:**

LAT: N 37.403592  
LONG: W 103.490913

**JACKSON 29 SWNW 3054**

<div><b>RIFFIN &amp; ASSOCIATES, INC.</b> (307) 362-5028 1414 ELK ST., ROCK SPRINGS, WY 82901</div>		<b>AERIAL LOCATION PHOTO</b>
		<div><b>BNL (ENTERPRISE) INC.</b> <b>JACKSON 29 SWNW 3054</b> <b>SWNW, SECTION 29, T.30 S., R. 54 W., 6th P.M.,</b> <b>LAS ANIMAS COUNTY, COLORADO</b></div>
<b>DRAWN: 8/1/22 - EMB</b>	<b>SCALE: NONE</b>	
<b>REVISED: 2/15/23 - DWB</b>	<b>DRG JOB No. 22225</b>	
<b>UPDATE LAYOUT</b>	<b>304b(4) LOC PIC - SHEET 1 OF 3</b>	






**WELL LOCATION LOOKING NORTH**  
**4/1/22**



**WELL LOCATION LOOKING EAST**  
**4/1/22**

**JACKSON 29 SWNW 3054**

 <b>DRG RIFFIN &amp; ASSOCIATES, INC.</b> <small>(307) 362-5028 1414 ELK ST., ROCK SPRINGS, WY 82901</small>		<b>LOCATION PICTURES</b>	
<b>DRAWN: 8/1/22 - EMB</b>	<b>SCALE: NONE</b>	<b>BNL (ENTERPRISE) INC.</b> <b>JACKSON 29 SWNW 3054</b> <b>SWNW, SECTION 29, T. 30 S., R. 54 W., 6th P.M.,</b> <b>LAS ANIMAS COUNTY, COLORADO</b>	
<b>REVISED: 2/15/23 - DWB</b>	<b>DRG JOB No. 22225</b>		
<b>UPDATE LAYOUT</b>	<b>304b(4) LOC PIC - SHEET 2 OF 3</b>		




**WELL LOCATION LOOKING SOUTH**  
4/1/22



**WELL LOCATION LOOKING WEST**  
4/1/22

**JACKSON 29 SWNW 3054**

 <b>DRG RIFFIN &amp; ASSOCIATES, INC.</b> <small>(307) 362-5028 1414 ELK ST., ROCK SPRINGS, WY 82901</small>		<b>LOCATION PICTURES</b>	
<b>DRAWN: 8/1/22 - EMB</b>	<b>SCALE: NONE</b>	<b>BNL (ENTERPRISE) INC.</b> <b>JACKSON 29 SWNW 3054</b> <b>SWNW, SECTION 29, T. 30 S., R. 54 W., 6th P.M.,</b> <b>LAS ANIMAS COUNTY, COLORADO</b>	
<b>REVISED: 2/15/23 - DWB</b>	<b>DRG JOB No. 22225</b>		
<b>UPDATE LAYOUT</b>	<b>304b(4) LOC PIC - SHEET 3 OF 3</b>		



UNGRADED ELEVATION: 5539.8'  
FINAL ELEVATION: 5538.6'  
AREA OF DISTURBANCE: 1.2± ACRES  
AREA OF WORKING PAD SURFACE: 1.0± ACRES

JACKSON 29 SWNW 3054

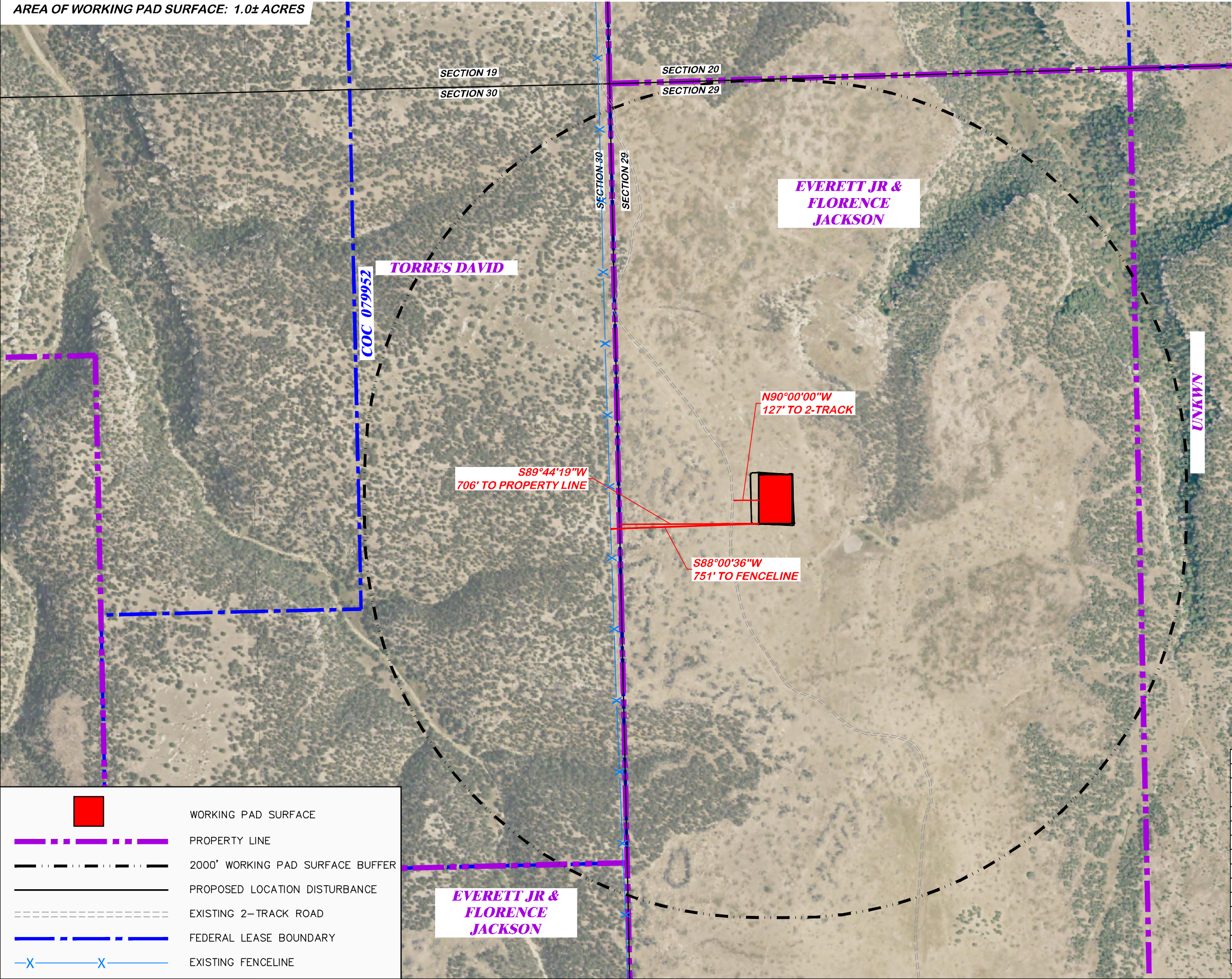
N

5000500

SCALE FEET

BEFORE DIGGING  
CALL FOR  
UTILITY LINE LOCATION

PAD LOCATION:  
LAT: N 37.403592  
LONG: W 103.490913



WORKING PAD SURFACE

PROPERTY LINE

2000' WORKING PAD SURFACE BUFFER

PROPOSED LOCATION DISTURBANCE

EXISTING 2-TRACK ROAD

FEDERAL LEASE BOUNDARY

EXISTING FENCELINE

EVERETT JR &  
FLORENCE  
JACKSON

TORRES DAVID

COC 079952

S89°44'19"W  
706' TO PROPERTY LINE

S88°00'36"W  
751' TO FENCELINE

N90°00'00"W  
127' TO 2-TRACK

UNKWN

LOCATION DRAWING FEATURES 304b(7)A	
FEATURE	DISTANCE
i BUILDING	5280'+ SE
i BUILDING UNITS	5280'+ SE
ii PUBLICLY MAINTAINED ROADS AND TRAILS	5280'+ N
iii FENCES	751' W
iv ABOVE GROUND UTILITIES	5280'+ NW
v RAILROADS	5280'+ NW
vi PIPELINES	5280'+ N
vii MINES	5280'+ S
viii OIL AND GAS WELLS AND PRODUCTION FACILITIES	5280'+ N
ix INJECTION WELLS	5280'+ N
x PLUGGED OIL AND GAS WELLS	5280'+ N
xi KNOWN WATER WELLS	4094' NE
xii KNOWN SEWERS WITH MANHOLES	5280'+ N

**RIFFIN & ASSOCIATES, INC.**  
1414 ELK ST., ROCK SPRINGS, WY 82901  
(307) 362-5028

DRAWN: 8/1/22 - EMB

REVISED: 4/9/24 - JMB

UPDATED TABLE

SCALE: 1" = 500'

DRG JOB No. 22225

304b(7)A LOC AERIAL

LOCATION DRAWING

BNL (ENTERPRISE) INC.  
JACKSON 29 SWNW 3054  
SWNW, SECTION 29, T.30 S., R.54 W., 6th P.M.,  
LAS ANIMAS COUNTY, COLORADO



UNGRADED ELEVATION: 5539.8'  
FINAL ELEVATION: 5538.6'  
AREA OF DISTURBANCE: 1.2± ACRES  
AREA OF WORKING PAD SURFACE: 1.0± ACRES

JACKSON 29 SWNW 3054

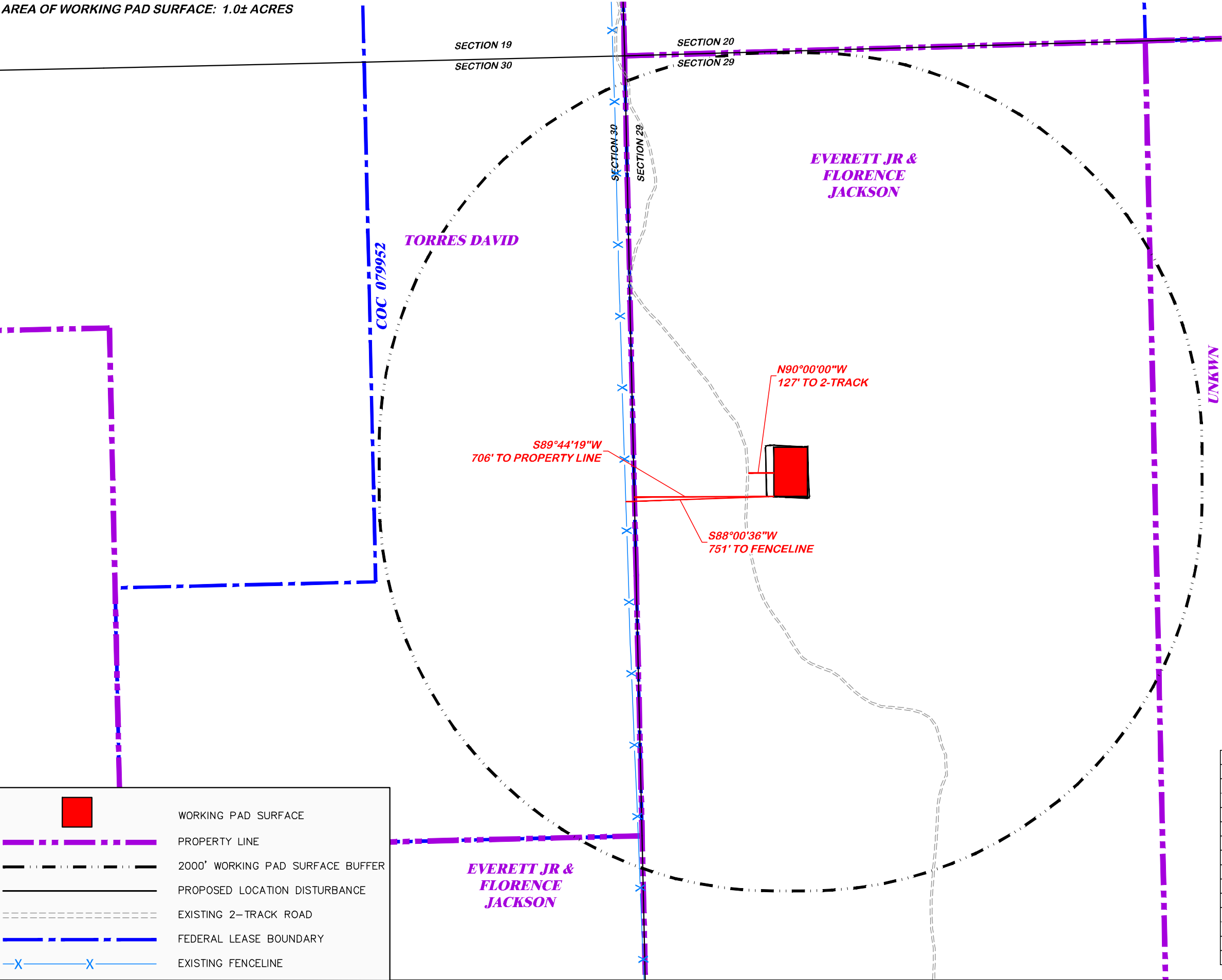
N

5000500

SCALE FEET

BEFORE DIGGING  
CALL FOR  
UTILITY LINE LOCATION

PAD LOCATION:  
LAT: N 37.403592  
LONG: W 103.490913



WORKING PAD SURFACE

PROPERTY LINE

2000' WORKING PAD SURFACE BUFFER

PROPOSED LOCATION DISTURBANCE

EXISTING 2-TRACK ROAD

FEDERAL LEASE BOUNDARY

EXISTING FENCELINE

LOCATION DRAWING FEATURES 304b(7)A	
FEATURE	DISTANCE
i BUILDING	5280'+ SE
i BUILDING UNITS	5280'+ SE
ii PUBLICLY MAINTAINED ROADS AND TRAILS	5280'+ N
iii FENCES	751' W
iv ABOVE GROUND UTILITIES	5280'+ NW
v RAILROADS	5280'+ NW
vi PIPELINES	5280'+ N
vii MINES	5280'+ S
viii OIL AND GAS WELLS AND PRODUCTION FACILITIES	5280'+ N
ix INJECTION WELLS	5280'+ N
x PLUGGED OIL AND GAS WELLS	5280'+ N
xi KNOWN WATER WELLS	4094' NE
xii KNOWN SEWERS WITH MANHOLES	5280'+ N

LOCATION DRAWING

BNL (ENTERPRISE) INC.  
JACKSON 29 SWNW 3054  
SWNW, SECTION 29, T.30 S., R. 54 W., 6th P.M.,  
LAS ANIMAS COUNTY, COLORADO

DRG

RIFFIN & ASSOCIATES, INC.

1414 ELK ST., ROCK SPRINGS, WY 82901

(307) 962-5028

DRAWN: 8/1/22 - EMB

REVISD: 4/9/24 - JMB

UPDATED TABLE

SCALE: 1" = 500'

DRG JOB No. 22225

304b(7)A LOC DWG



UNGRADED ELEVATION: 5539.8'  
FINAL ELEVATION: 5538.6'  
AREA OF DISTURBANCE: 1.2± ACRES  
AREA OF WORKING PAD SURFACE: 1.0± ACRES

JACKSON 29 SWNW 3054

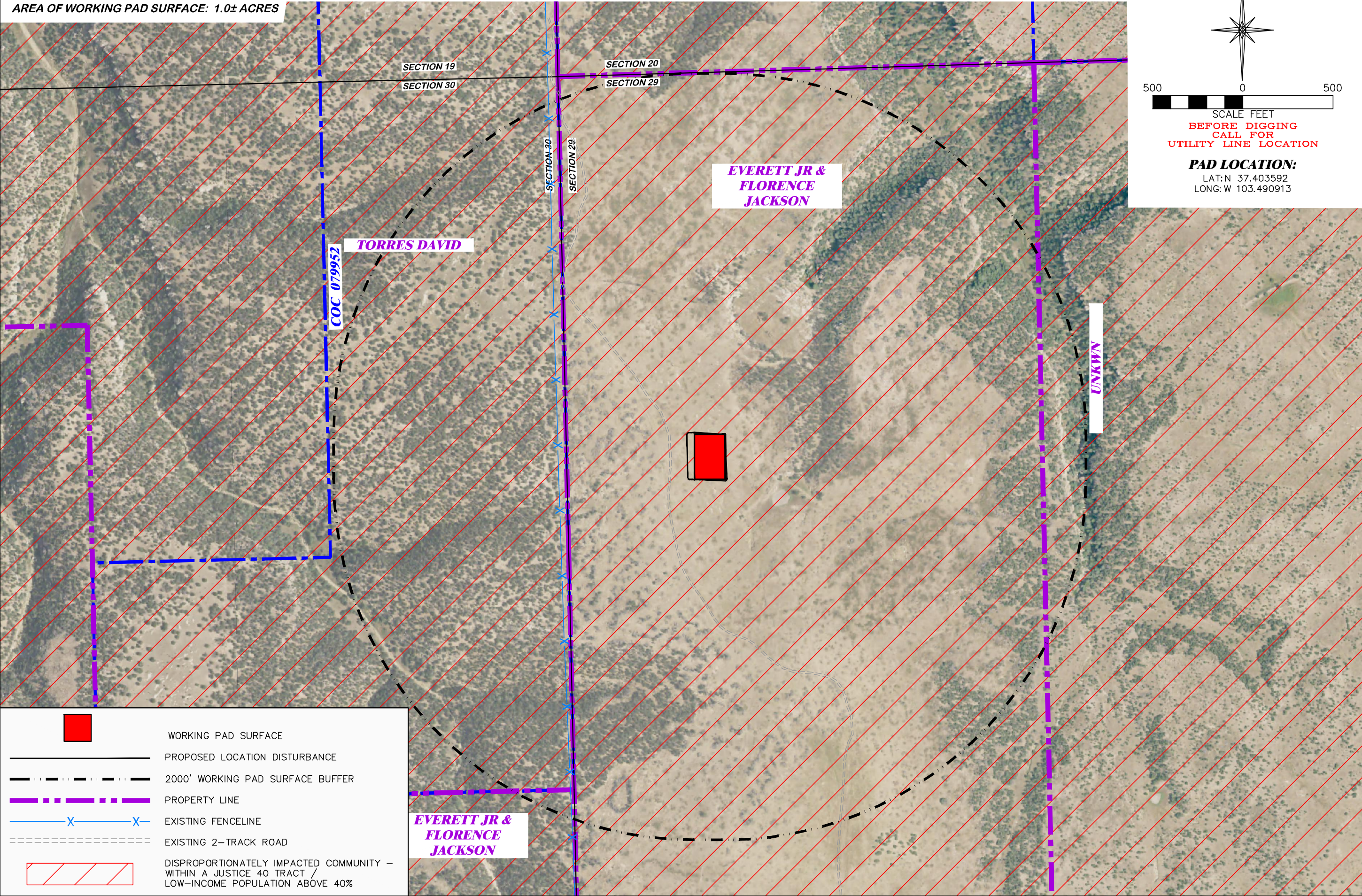
N

5000500

SCALE FEET

BEFORE DIGGING  
CALL FOR  
UTILITY LINE LOCATION

PAD LOCATION:  
LAT: N 37.403592  
LONG: W 103.490913



WORKING PAD SURFACE

PROPOSED LOCATION DISTURBANCE

2000' WORKING PAD SURFACE BUFFER

PROPERTY LINE

EXISTING FENCELINE

EXISTING 2-TRACK ROAD

DISPROPORTIONATELY IMPACTED COMMUNITY –  
WITHIN A JUSTICE 40 TRACT /  
LOW-INCOME POPULATION ABOVE 40%

(307) 962-5028

RIFFIN & ASSOCIATES, INC.

1414 ELK ST., ROCK SPRINGS, WY 82901

DRAWN: 8/1/22 - EMB

REVISED: 4/9/24 - JMB

ADDED MAP

SCALE: 1" = 500'

DRG JOB No. 22225

304b(7)J DIC MAP

DISPROPORTIONATELY IMPACTED COMMUNITIES MAP

BNL (ENTERPRISE) INC.

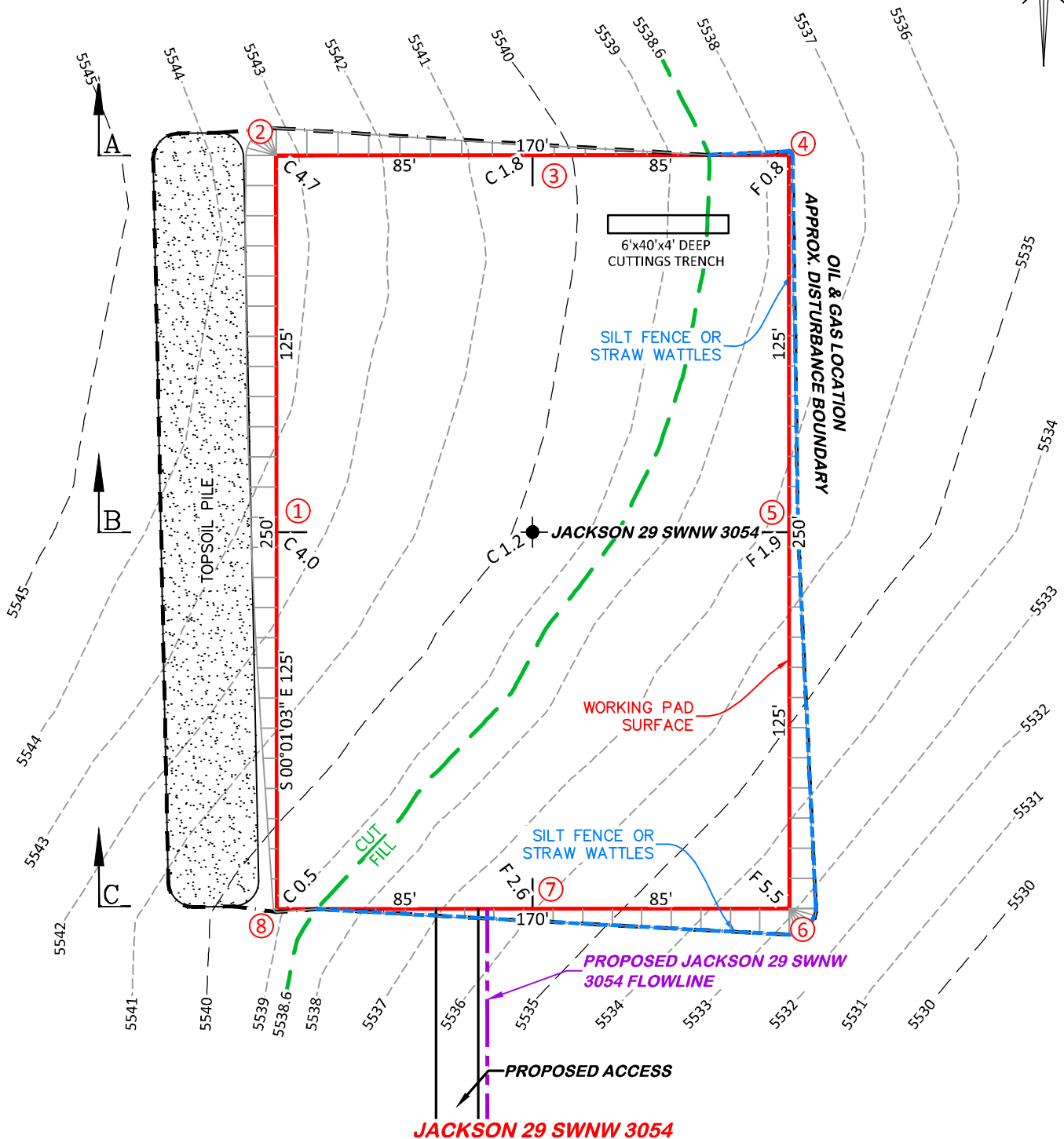
JACKSON 29 SWNW 3054

SWNW, SECTION 29, T.30 S., R. 54 W., 6th P.M.,

LAS ANIMAS COUNTY, COLORADO



**FINAL ELEVATION: 5538.6'**




50 0 50

SCALE FEET

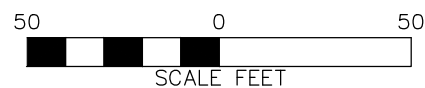
### **PLAN**

**JACKSON 29 SWNW 3054**

### **ESTIMATED EARTHWORK**

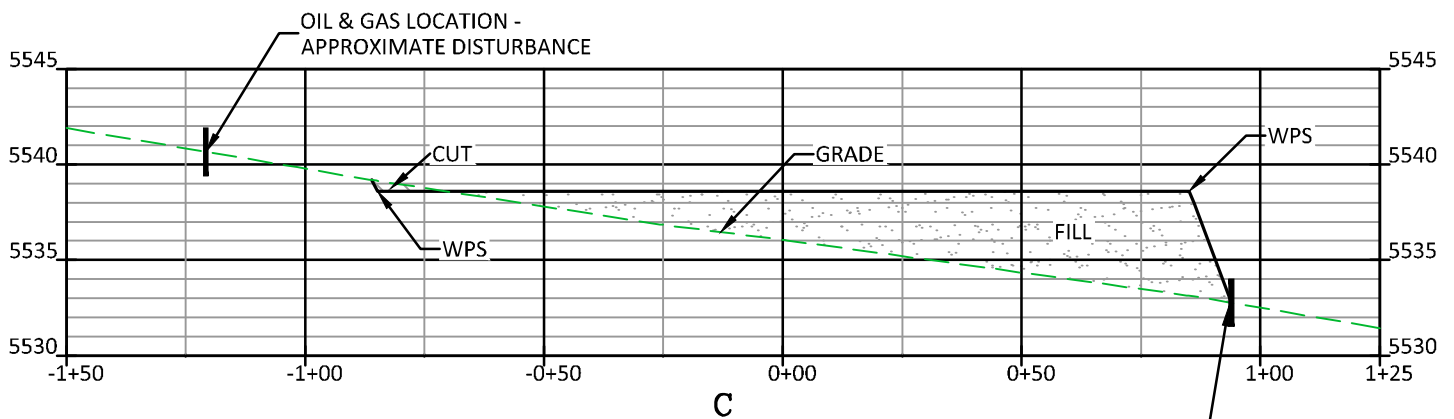
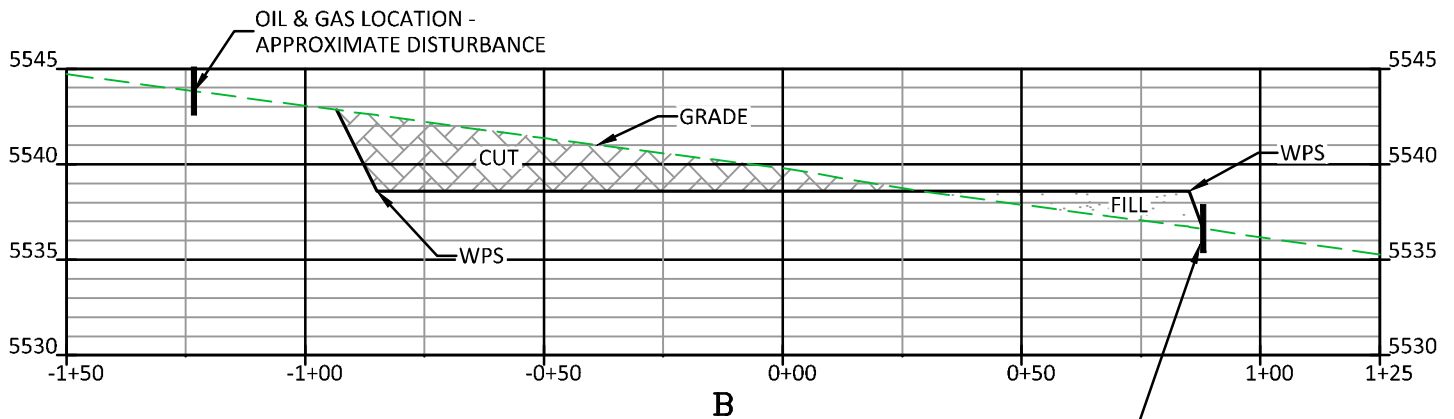
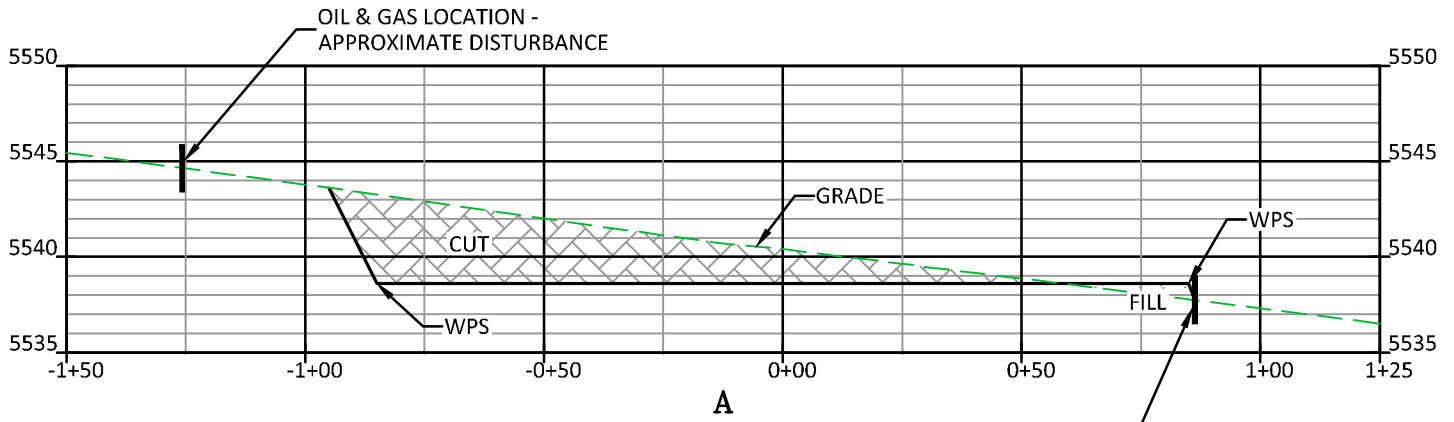
 <b>Riff Win Associates, Inc.</b> (307) 362-5028      1414 ELK ST., ROCK SPRINGS, WY 82901		ITEM	CUT	FILL	TOPSOIL	EXCESS
<b>DRAWN: 8/1/22 - EMB</b>	<b>SCALE: 1" = 50'</b>	<b>PAD</b>	<b>2,018 CY</b>	<b>1,149 CY</b>	<b>868 CY</b>	<b>1 CY</b>
<b>REVISED: 2/15/23 - DWB</b>	<b>DRG JOB No. 22225</b>	<b>PIT</b>	<b>NONE</b>			<b>NONE</b>
<b>UPDATE RIG &amp; PRODUCTION</b>	<b>304b(7)Bi CONST</b>	<b>TOTALS</b>	<b>2,018 CY</b>	<b>1,149 CY</b>	<b>868 CY</b>	<b>1 CY</b>





**304b(7)Bi DSGN CONT**

**JACKSON 29 SWNW 3054**  
**SWNW, SECTION 29, T.30 S., R. 54 W., 6th P.M.,**  
**LAS ANIMAS COUNTY, COLORADO**



**CUT SLOPES - 2:1**

**FILL SLOPES - 1.5:1**

**JACKSON 29 SWNW 3054**



**RIFFIN & ASSOCIATES, INC.**

(307) 362-5028

1414 ELK ST., ROCK SPRINGS, WY 82901

DRAWN: 8/1/22 - EMB

SCALE: H - 1" = 40' V - 1" = 10'

REVISED: NA

DRG JOB No. 22225

304b(7)Bi XSEC

**CONSTRUCTION LAYOUT DRAWING 2 OF 5**

**CONSTRUCTION LAYOUT DRAWING  
CROSS-SECTIONS**

**BNL (ENTERPRISE) INC.**

**JACKSON 29 SWNW 3054**

**SWNW, SECTION 29, T. 30 S., R. 54 W., 6th P.M.,  
LAS ANIMAS COUNTY, COLORADO**



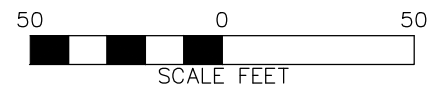
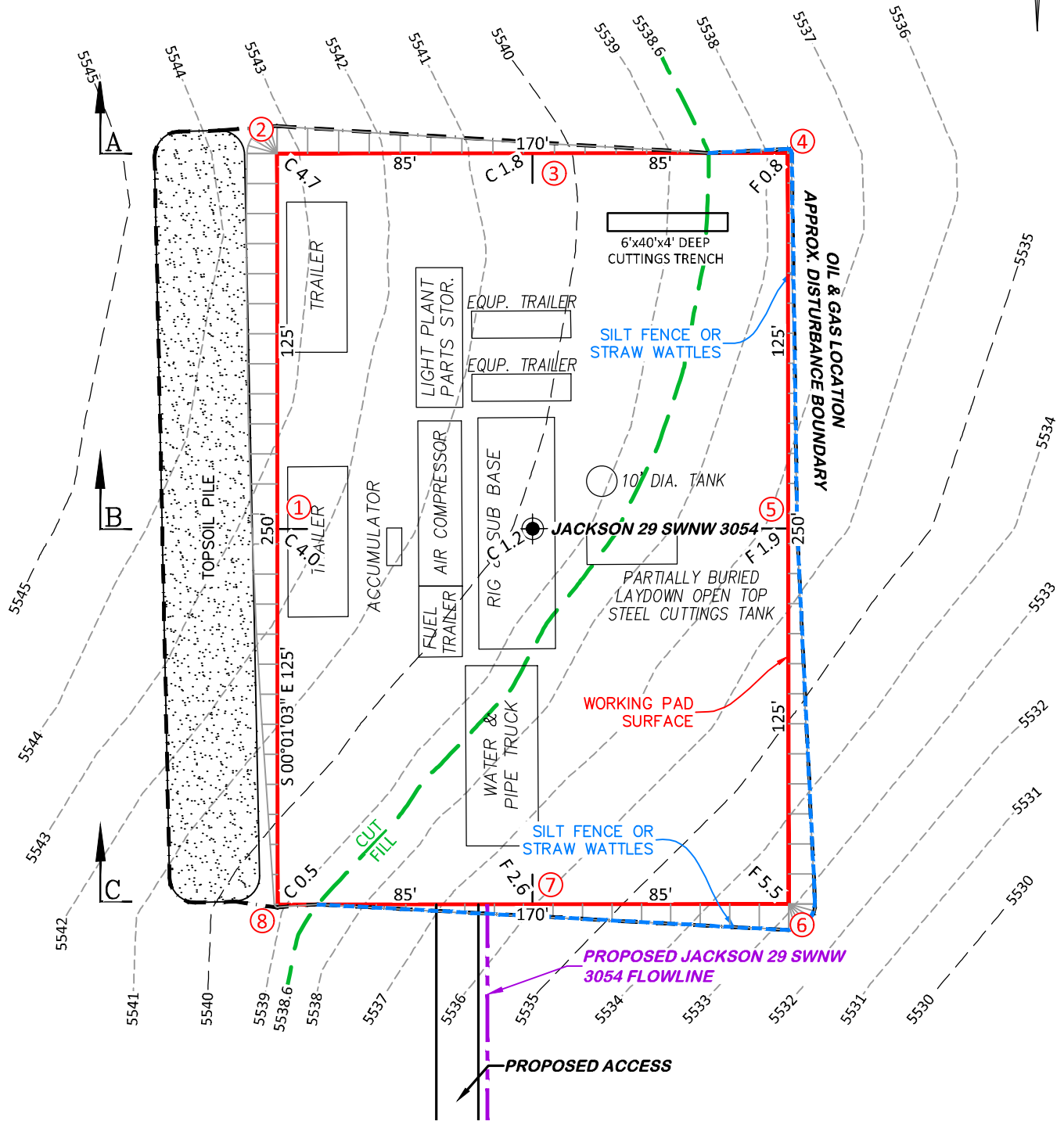
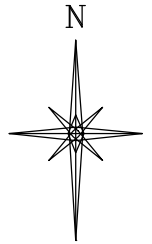
UNGRADED ELEVATION: 5539.8'

FINAL ELEVATION: 5538.6'

PROPOSED AREA OF DISTURBANCE: 1.2± ACRES

AREA OF WORKING PAD SURFACE: 1.0± ACRES

PROPOSED ACCESS DISTURBANCE: 8.6± ACRES



**JACKSON 29 SWNW 3054**

**DRG** RIFFIN & ASSOCIATES, INC.  
(307) 362-5028 1414 ELK ST., ROCK SPRINGS, WY 82901

DRAWN: 8/1/22 - EMB

SCALE: 1" = 50'

REVISED: 2/15/23 - DWB

DRG JOB No. 22225

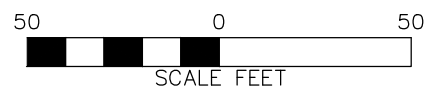
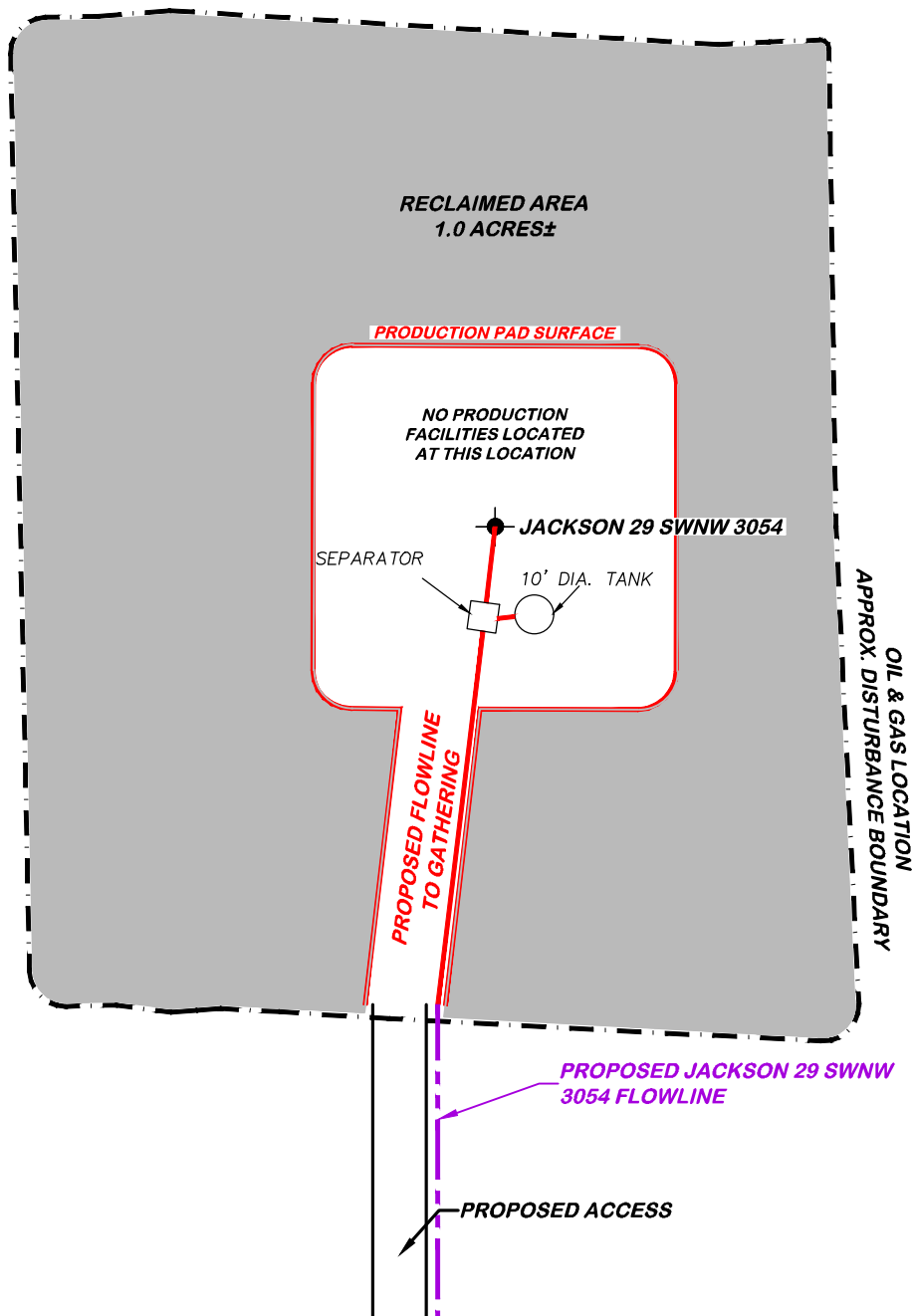
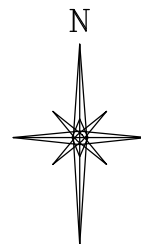
UPDATE RIG & PRODUCTION

304b(7)Bii RIG

**CONSTRUCTION LAYOUT DRAWING 4 OF 5**

**PRELIMINARY RIG LAYOUT DRAWING  
BNL (ENTERPRISE) INC.  
JACKSON 29 SWNW 3054  
SWNW, SECTION 29, T. 30 S., R. 54 W., 6th P.M.,  
LAS ANIMAS COUNTY, COLORADO**

APPROXIMATE DISTURBANCE AREA 1.2± ACRES  
PROPOSED RECLAMATION AREA: 1.0± ACRES  
INTERIM RECLAMATION DISTURBANCE: 0.2± ACRES



**JACKSON 29 SWNW 3054**



**RIFFIN & ASSOCIATES, INC.**

(307) 362-5028

1414 ELK ST., ROCK SPRINGS, WY 82901

DRAWN: 8/1/22 - EMB

SCALE: 1" = 50'

REVISED: 2/15/23 - DWB

DRG JOB No. 22225

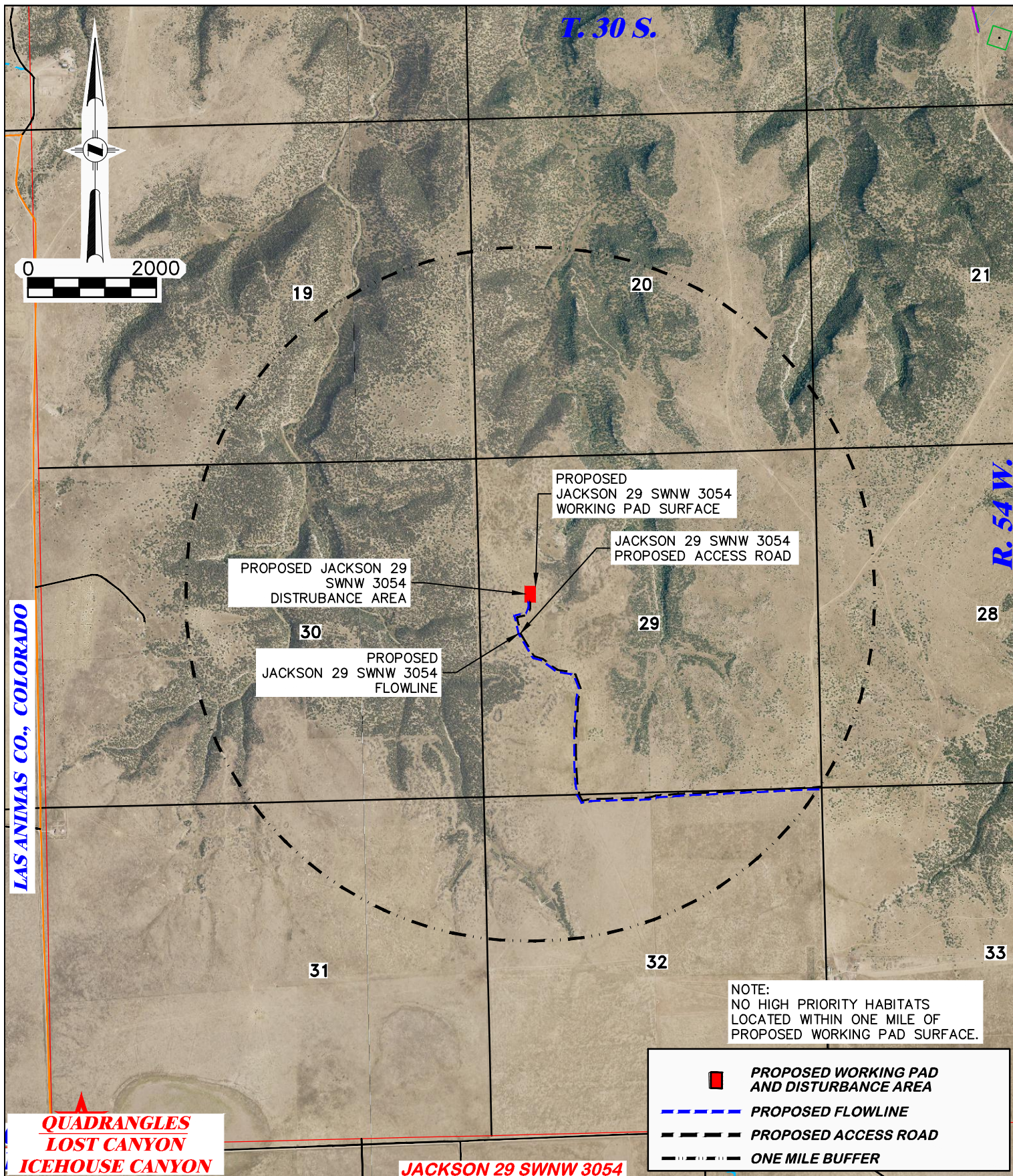
UPDATE RIG & PRODUCTION

304b(7)Bv FACILITY

**CONSTRUCTION LAYOUT DRAWING 5 OF 5**

**FACILITY LAYOUT DRAWING  
BNL (ENTERPRISE) INC.  
JACKSON 29 SWNW 3054  
SWNW, SECTION 29, T. 30 S., R. 54 W., 6th P.M.,  
LAS ANIMAS COUNTY, COLORADO**

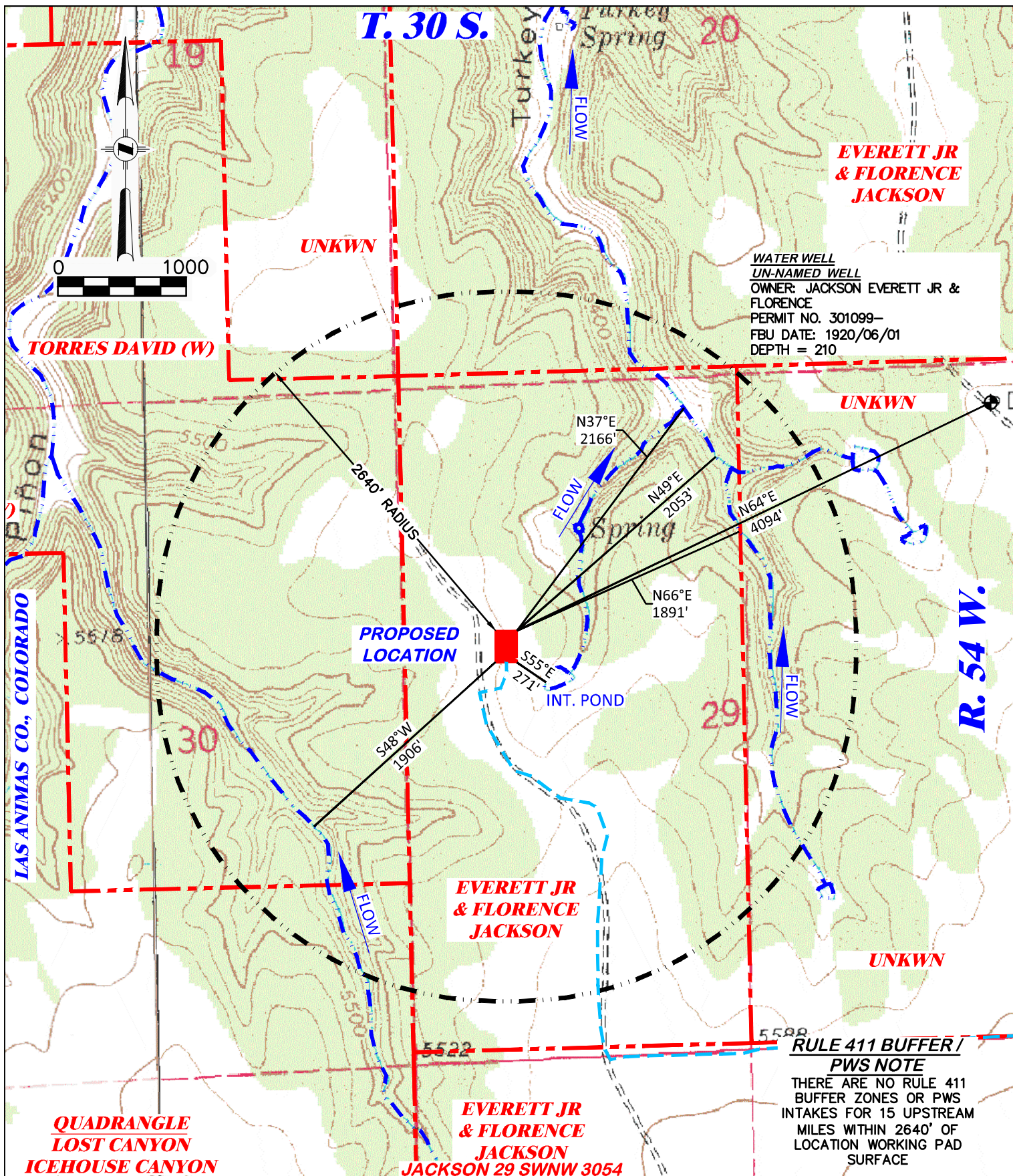




<b>DRG</b> <b>RIFFIN &amp; ASSOCIATES, INC.</b> (307) 362-5028 1414 ELK ST., ROCK SPRINGS, WY 82901	
DRAWN: 8/1/22 - EMB	SCALE: 1" = 2000'
REVISED: NA	DRG JOB No. 22225
	304b(7)C WILDLIFE

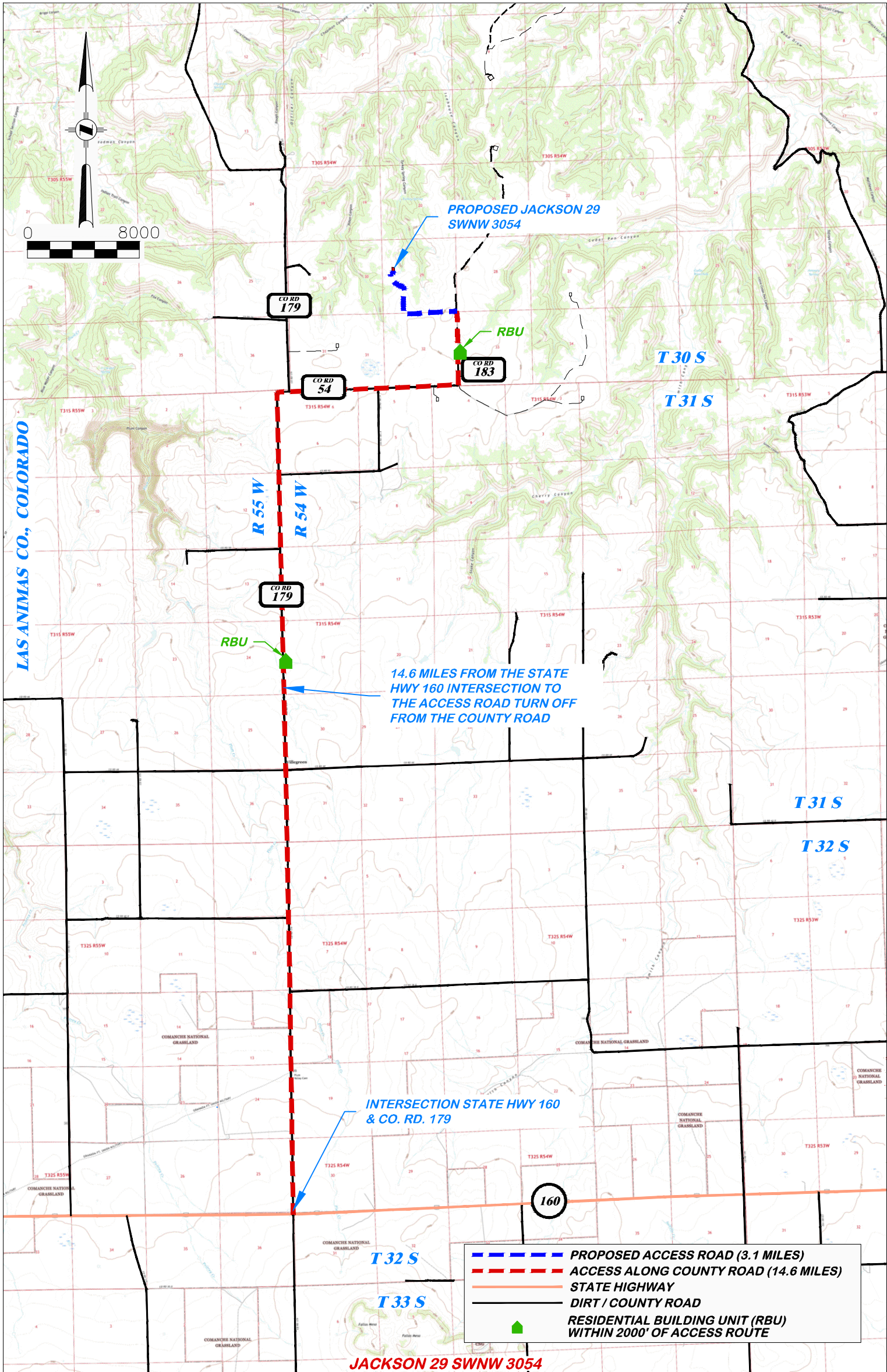
<b>WILDLIFE HABITAT DRAWING</b>
<b>BNL (ENTERPRISE) INC.</b> <b>JACKSON 29 SWNW 3054</b> <b>SWNW, SECTION 29, T. 30 S., R. 54 W., 6th P.M.,</b> <b>LAS ANIMAS COUNTY, COLORADO</b>






<b>DRG</b> <b>RIFFIN &amp; ASSOCIATES, INC.</b> (307) 362-5028 1414 ELK ST., ROCK SPRINGS, WY 82901		<b>HYDROLOGY MAP</b> <b>BNL (ENTERPRISE) INC.</b> <b>JACKSON 29 SWNW 3054</b> <b>SWNW, SECTION 29, T. 30 S., R. 54 W., 6th P.M.,</b> <b>LAS ANIMAS COUNTY, COLORADO</b>	
<b>DRAWN: 8/1/22 - EMB</b>	<b>SCALE: 1" = 1000'</b>	<b>HISTORIC SPRING</b>	<b>PERENNIAL FLOW</b>
<b>REVISED: NA</b>	<b>DRG JOB No. 22225</b>	<b>INTERMITTENT FLOW</b>	<b>EXISTING ROAD</b>
	<b>304b(7)E HYDRO</b>		





- PROPOSED ACCESS ROAD (3.1 MILES)
- ACCESS ALONG COUNTY ROAD (14.6 MILES)
- STATE HIGHWAY
- DIRT / COUNTY ROAD
- RESIDENTIAL BUILDING UNIT (RBU) WITHIN 2000' OF ACCESS ROUTE



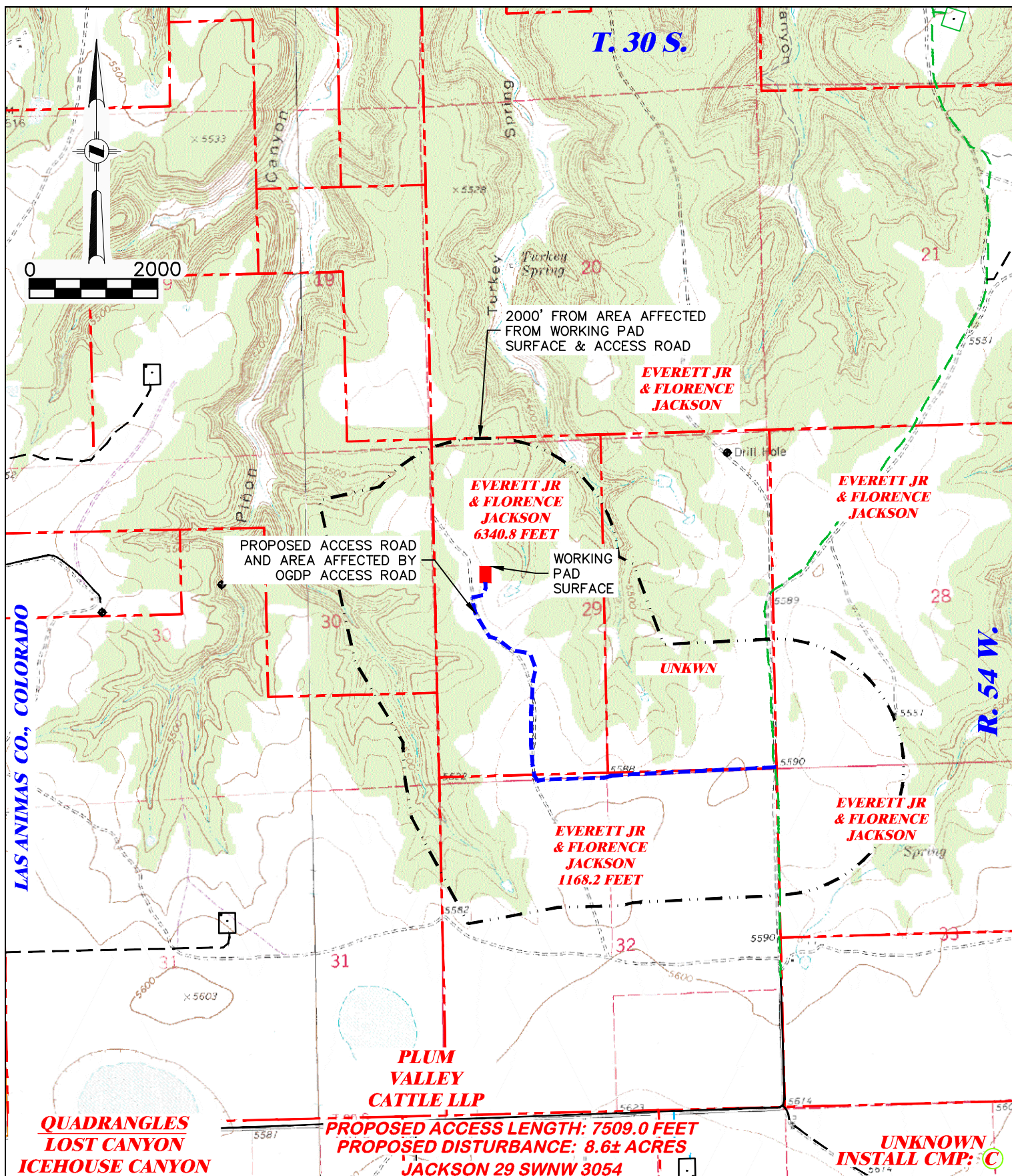
**DRG RIFFIN & ASSOCIATES, INC.**  
(307) 362-5028  
1414 ELK ST., ROCK SPRINGS, WY 82901

DRAWN: 8/1/22 - EMB	SCALE: 1" = 8000'
REVISED: NA	DRG JOB No. 22225
	304b(7)F ACCESS

**PROPOSED ACCESS ROAD MAP**

**HAUL ROUTE**  
**BNL (ENTERPRISE) INC.**  
**JACKSON 29 SWNW 3054**  
**SWNW, SECTION 29, T.30 S., R. 54 W., 6th P.M.,**  
**LAS ANIMAS COUNTY, COLORADO**





**DRG RIFFIN & ASSOCIATES, INC.**

(307) 362-5028

1414 ELK ST., ROCK SPRINGS, WY 82901

**DRAWN: 8/1/22 - EMB**

**SCALE: 1" = 2000'**

**REVISED: NA**

**DRG JOB No. 22225**

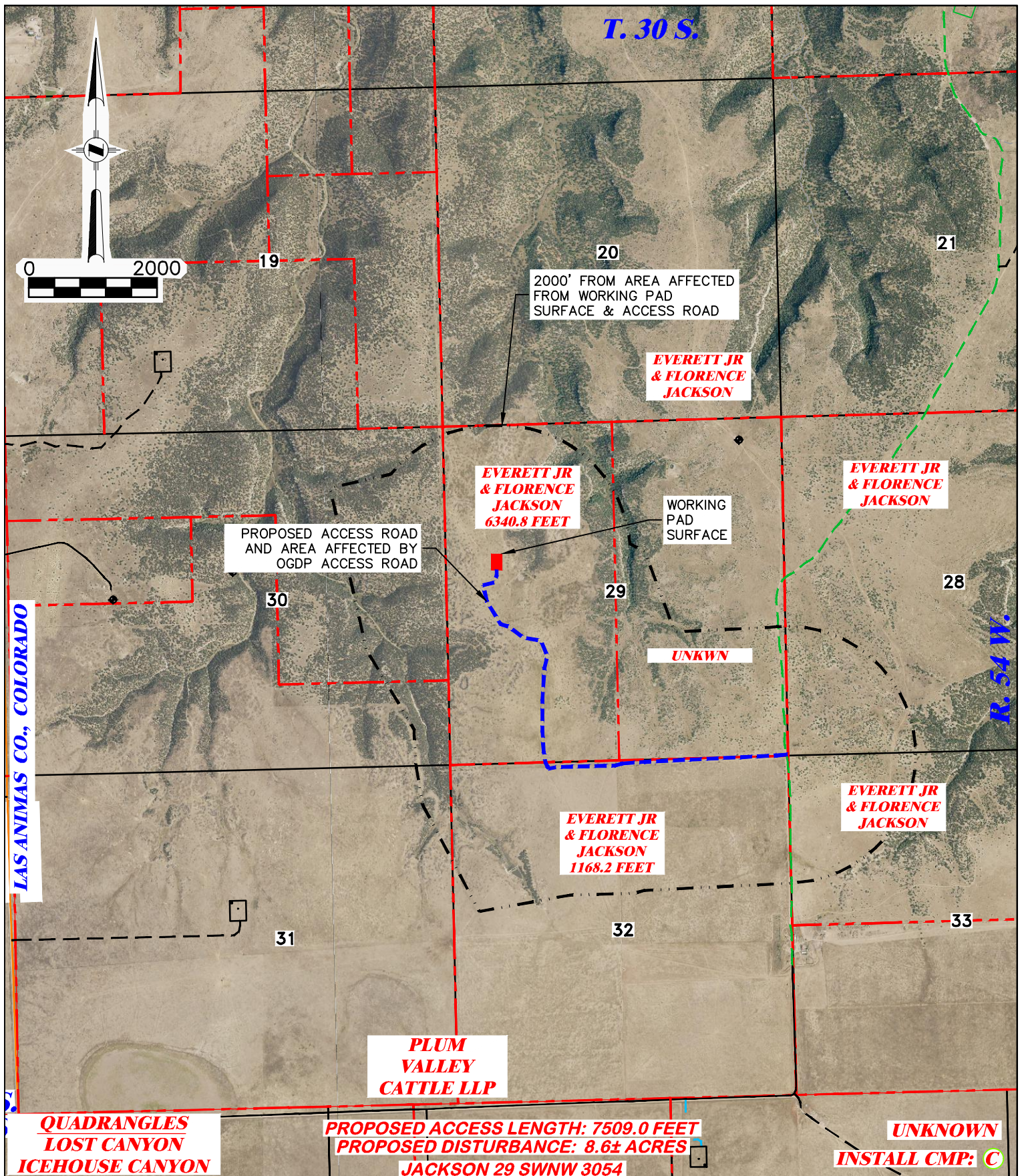
**304b(7)F ROAD SHEET 1 OF 2**






**PROPOSED WORKING PAD SURFACE**

**PROPOSED ACCESS W/ AFFECTED AREA**



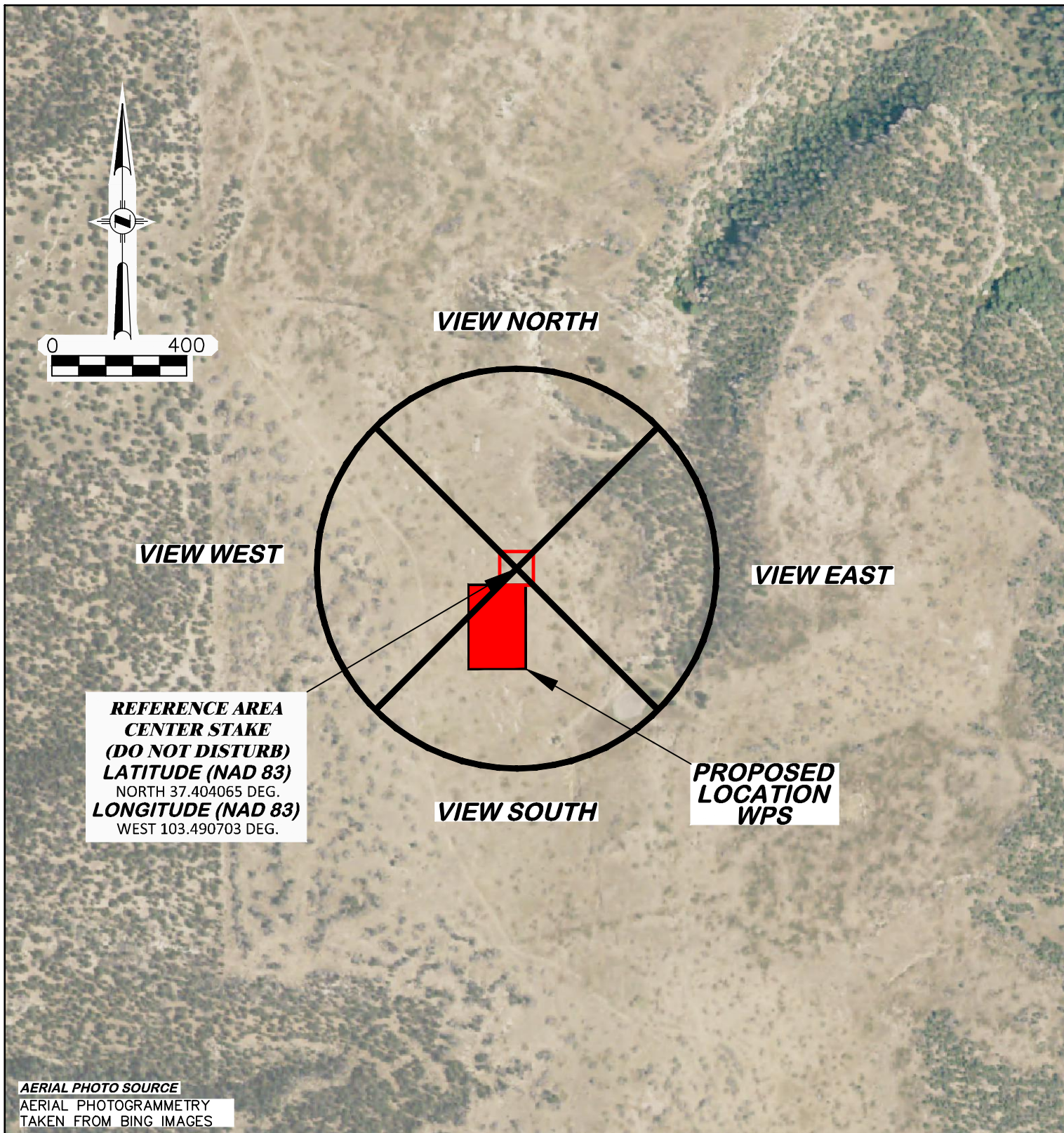


 <b>DRG RIFFIN &amp; ASSOCIATES, INC.</b> (307) 362-5028 1414 ELK ST., ROCK SPRINGS, WY 82901		<b>PROPOSED NEW ACCESS MAP</b> <b>BNL (ENTERPRISE) INC.</b> <b>JACKSON 29 SWNW 3054</b> <b>SWNW, SECTION 29, T. 30 S., R. 54 W., 6th P.M.,</b> <b>LAS ANIMAS COUNTY, COLORADO</b>	
		 <b>PROPOSED WORKING PAD SURFACE</b> <b>PROPOSED ACCESS W/ AFFECTED AREA</b> 	
<b>DRAWN: 8/1/22 - EMB</b>	<b>SCALE: 1" = 2000'</b>		
<b>REVISED: NA</b>	<b>DRG JOB No. 22225</b>		
<b>304b(7)F ROAD SHEET 2 OF 2</b>			










**AERIAL PHOTO SOURCE**  
AERIAL PHOTOGRAMMETRY  
TAKEN FROM BING IMAGES

**PAD LOCATION:**

LAT: N 37.403592  
LONG: W 103.490913

**JACKSON 29 SWNW 3054**

<div><b>RIFFIN &amp; ASSOCIATES, INC.</b></div> <div><div>(307) 362-5028</div><div>1414 ELK ST., ROCK SPRINGS, WY 82901</div></div>		<b>REFERENCE AREA PHOTOS</b>	
<div><b>DRAWN: 8/1/22 - EMB</b></div> <div><b>REVISD: 2/15/23 - DWB</b></div> <div><b>UPDATE LAYOUT</b></div>		<div><b>BNL (ENTERPRISE) INC.</b></div> <div><b>JACKSON 29 SWNW 3054</b></div> <div><b>SWNW, SECTION 29, T. 30 S., R. 54 W., 6th P.M.,</b></div> <div><b>LAS ANIMAS COUNTY, COLORADO</b></div>	
<b>SCALE: NONE</b>			
<b>DRG JOB No. 22225</b>			
<b>304b(9) REF PIC - SHEET 1 OF 3</b>			






**REFERENCE AREA LOOKING NORTH**  
**4/1/22**



**REFERENCE AREA LOOKING EAST**  
**4/1/22**

**JACKSON 29 SWNW 3054**

 <b>DRG RIFFIN &amp; ASSOCIATES, INC.</b> <small>(307) 362-5028 1414 ELK ST., ROCK SPRINGS, WY 82901</small>		REFERENCE AREA PHOTOS
<b>DRAWN: 8/1/22 - EMB</b>	<b>SCALE: NONE</b>	<b>BNL (ENTERPRISE) INC.</b> <b>JACKSON 29 SWNW 3054</b> <b>SWNW, SECTION 29, T. 30 S., R. 54 W., 6th P.M.,</b> <b>LAS ANIMAS COUNTY, COLORADO</b>
<b>REVISED: 2/15/23 - DWB</b>	<b>DRG JOB No. 22225</b>	
<b>UPDATE LAYOUT</b>	<b>304b(9) REF PIC - SHEET 2 OF 3</b>	






**REFERENCE AREA LOOKING SOUTH**  
4/1/22

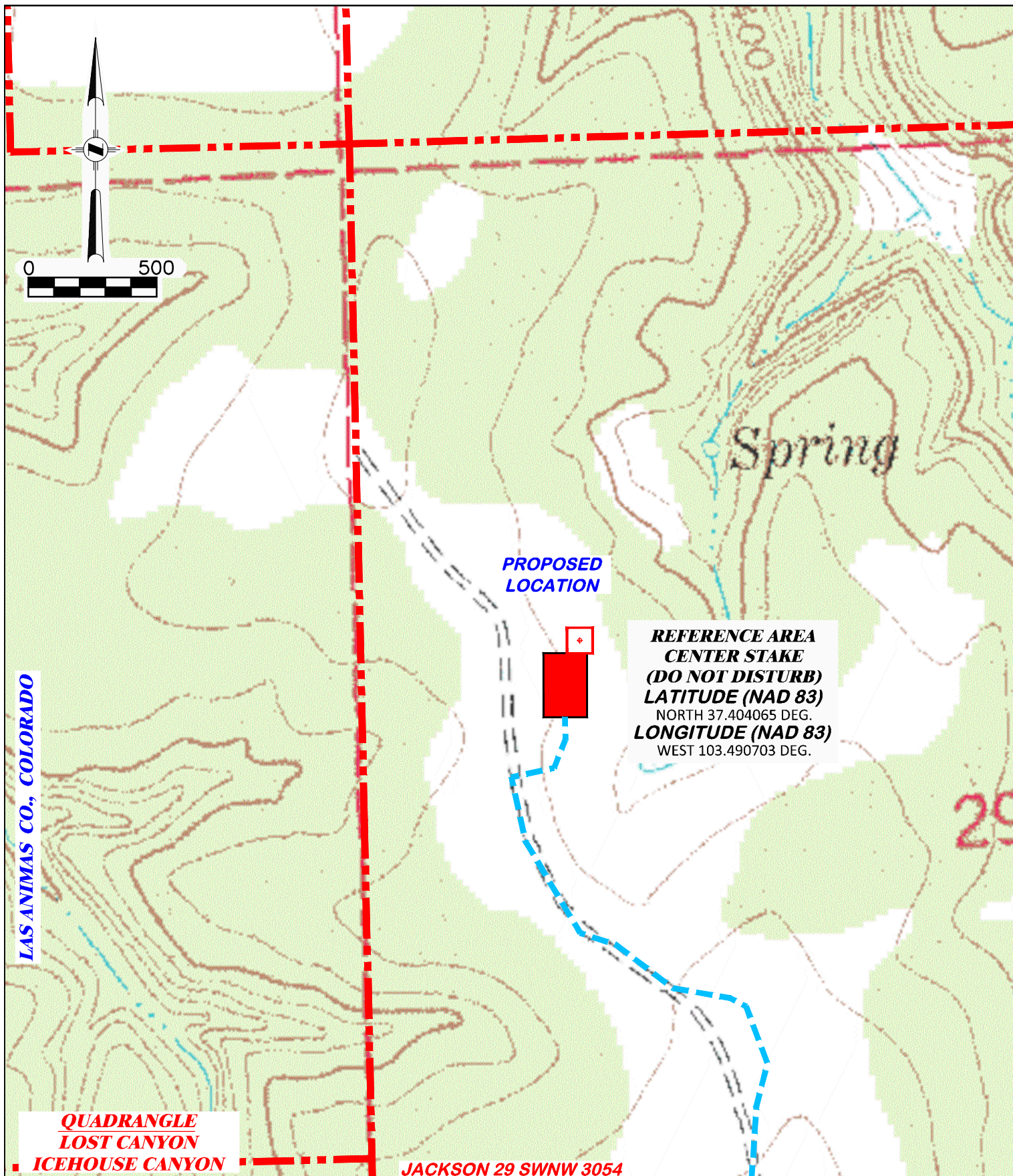


**REFERENCE AREA LOOKING WEST**  
4/1/22

**JACKSON 29 SWNW 3054**

 <b>DRG RIFFIN &amp; ASSOCIATES, INC.</b> <small>(307) 362-5028 1414 ELK ST., ROCK SPRINGS, WY 82901</small>		REFERENCE AREA PHOTOS
<b>DRAWN: 8/1/22 - EMB</b>	<b>SCALE: NONE</b>	<b>BNL (ENTERPRISE) INC.</b> <b>JACKSON 29 SWNW 3054</b> <b>SWNW, SECTION 29, T. 30 S., R. 54 W., 6th P.M.,</b> <b>LAS ANIMAS COUNTY, COLORADO</b>
<b>REVISED: 2/15/23 - DWB</b>	<b>DRG JOB No. 22225</b>	
<b>UPDATE LAYOUT</b>	<b>304b(9) REF PIC - SHEET 3 OF 3</b>	





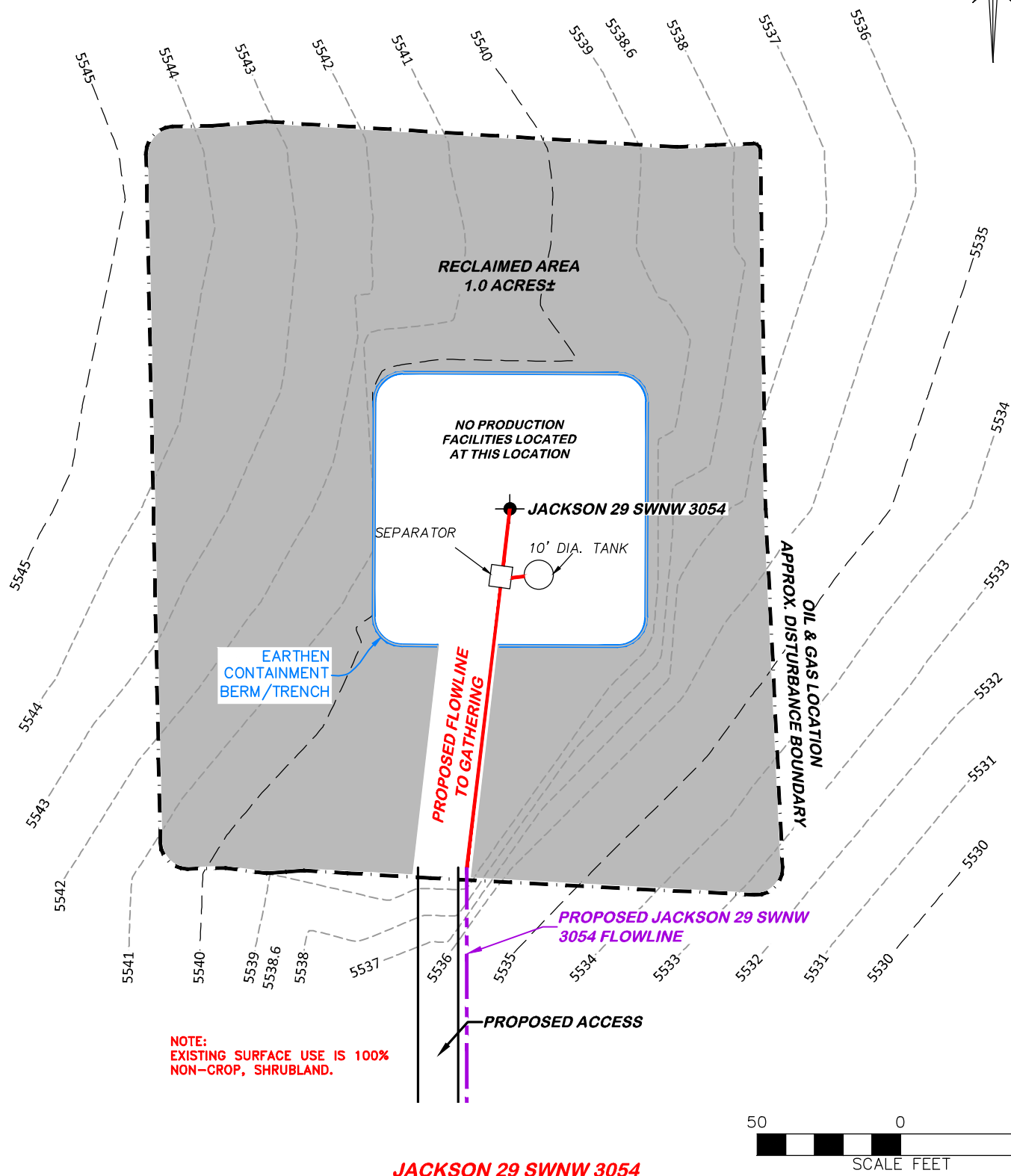
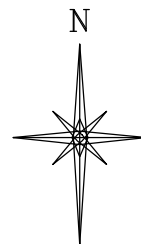
<b>DRG</b> <b>RIFFIN &amp; ASSOCIATES, INC.</b> <small>(307) 362-5028 1414 ELK ST., ROCK SPRINGS, WY 82901</small>		<b>REFERENCE AREA MAP</b>	
<b>DRAWN: 8/1/22 - EMB</b>		<b>BNL (ENTERPRISE) INC.</b>	
<b>REVISD: NA</b>		<b>JACKSON 29 SWNW 3054</b>	
<b>SCALE: 1" = 500'</b>		<b>SWNW, SECTION 29, T. 30 S., R. 54 W., 6th P.M.,</b>	
<b>DRG JOB No. 22225</b>		<b>LAS ANIMAS COUNTY, COLORADO</b>	
<b>304b(9)Bi REF AREA</b>			



**STORMWATER AND EROSION CONTROL PLAN**  
**BNL (ENTERPRISE) INC.**  
**JACKSON 29 SWNW 3054**  
**SWNW, SECTION 29, T. 30 S., R. 54 W., 6th P.M.,**  
**LAS ANIMAS COUNTY, COLORADO**



APPROXIMATE DISTURBANCE AREA 1.2± ACRES  
PROPOSED RECLAMATION AREA: 1.0± ACRES  
INTERIM RECLAMATION DISTURBANCE: 0.2± ACRES



**JACKSON 29 SWNW 3054**



**RIFFIN & ASSOCIATES, INC.**

(307) 362-5028

1414 ELK ST., ROCK SPRINGS, WY 82901

DRAWN: 8/1/22 - EMB

SCALE: 1" = 50'

REVISED: 2/15/23 - DWB

DRG JOB No. 22225

UPDATE RIG & PRODUCTION

304c(16) RECLAMATION

**INTERIM RECLAMATION  
BNL (ENTERPRISE) INC.  
JACKSON 29 SWNW 3054**

**SWNW, SECTION 29, T. 30 S., R. 54 W., 6th P.M.,  
LAS ANIMAS COUNTY, COLORADO**