

BNL (ENTERPRISE) INC.
JACKSON 27 SWSE 3054
SWSE, SECTION 27, T30S, R54W, 6th PM
REVISED DATE: 4/8/24 - JMB

DISTANCE FROM WORKING PAD SURFACE <u>304b(3)A</u>																		
	BUILDING		RESIDENTIAL BUILDING UNIT		HIGH OCCUPANCY BUILDING UNIT		SCHOOL FACILITY		DOAA		PUBLIC ROAD		ABOVE GROUND UTLITY		RAILROAD		PROPERTY LINE	
	DIRECTION	LENGTH	DIRECTION	LENGTH	DIRECTION	LENGTH	DIRECTION	LENGTH	DIRECTION	LENGTH	DIRECTION	LENGTH	DIRECTION	LENGTH	DIRECTION	LENGTH	DIRECTION	LENGTH
WPS	SW	5280'	SW	5280'	N	5280'	N	5280'	N	5280'	SW	5280'	NW	5280'	NW	5280'	W	5280'
					DISTANCE FROM WORKING PAD SURFACE - DISPROPORTIONATELY IMPACTED COMMUNITY													
							RESIDENTIAL BUILDING UNIT		HIGH OCCUPANCY BUILDING UNIT		SCHOOL FACILITY							
					WPS		DIRECTION	LENGTH	DIRECTION	LENGTH	DIRECTION	LENGTH	DIRECTION	LENGTH				
							-	0'	-	0'	-	0'	-	0'				

CULTURAL FEATURE INFORMATION <u>304b(3)B</u>			
CULTURAL FEATURE	0-500 FEET		501 - 1,000 FEET
	NUMBER		NUMBER
BUILDING UNIT	0		0
RESIDENTIAL BUILDING UNIT	0		0
HIGH OCCUPANCY BUILDING UNIT	0		0
SCHOOL PROPERTIES	0		0
SCHOOL FACILITIES	0		0
DESIGNATED OUTDOOR ACTIVITY AREA	0		0
SCHOOL WITHIN DISPROPORTIONALLY IMPACTED COMMUNITY	0		0

DISTANCE FROM WELL HEAD																		
WELL NAME	BUILDING		RESIDENTIAL BUILDING		HIGH OCCUPANCY		SCHOOL FACILITY		DOAA		PUBLIC ROAD		ABOVE GROUND UTLITY		RAILROAD		PROPERTY LINE	
	DIRECTION	LENGTH	DIRECTION	LENGTH	DIRECTION	LENGTH	DIRECTION	LENGTH	DIRECTION	LENGTH	DIRECTION	LENGTH	DIRECTION	LENGTH	DIRECTION	LENGTH	DIRECTION	LENGTH
JACKSON 27 SWSE 3054	SW	5280'	SW	5280'	N	5280'	N	5280'	N	5280'	SW	5280'	NW	5280'	NW	5280'	W	5280'

R. 54 W.

N23°54'54"W 4325.76'
TO DRG CP 21 3054

**JACKSON 27
SWSE 3054**

**UNGRADED ELEVATION:
5532.7'**

PROTRACTED SECTION

27

COC 079952

COC 079952

COC 079952

931'

2386'



GRID NORTH
SCALE' 1" = 1000'
500' 0 1000'

T. 30 S.

SHL

LATITUDE (NAD 83)
NORTH 37.397895 DEG.
LONGITUDE (NAD 83)
WEST 103.447426 DEG.
NORTHING (NAD 83)
1272805.08
EASTING (NAD 83)
3596216.96

**BASIS OF BEARINGS,
ELEVATIONS & DATUM**

SPCS COLORADO SOUTH NAD 27 BASED
ON GPS OBSERVATIONS AND OPUS
SOLUTION ON 1 1/2 IN. ALUM. CAP ON
No. 5 REBAR DRG CONTROL POINTS
"CP 21 3054" HAVING A NAD83(2011)
POSITION OF:
LAT 37° 25' 14.50" NORTH
LONG 103° 27' 47.69" WEST
NAVD88 ELEVATION: 5538.59'
"CP 35 2954" HAVING A NAD83(2011)
POSITION OF:
LAT 37° 28' 39.68" NORTH
LONG 103° 26' 15.82" WEST
NAVD88 ELEVATION: 5309.79'

BEARINGS HEREIN RELATIVE TO GRID
BEARING BETWEEN SAID POINTS:
N18°23'17"E

NOTES

1. GPS OPERATOR J. MONTOYA OBSERVED A PDOP OF 2.4.
2. ALL GPS OBSERVATIONS ARE IN COMPLIANCE WITH COGCC RULE No.215.
3. EXISTING IMPROVEMENTS WITHIN 2000' OF LOCATION. SEE LOC. DRAWING.
4. SURROUNDING SURFACE USE IS NATIVE BRUSH, NON CROP RANGELAND.

LEGEND

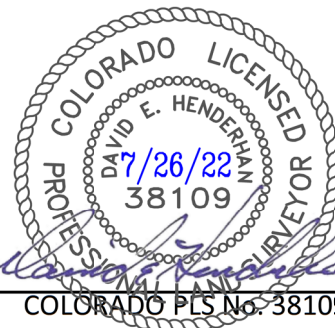
- ◆ WELL LOCATION
- L DENOTES 90° TIE
- PROTRACTED QUADRANGLE INTERSECTION LOCATION
- BLM LEASE LINE

SURVEYOR'S STATEMENT

I, DAVID E. HENDERHAN, AN EMPLOYEE AND AGENT ON BEHALF OF D.R. GRIFFIN & ASSOCIATES, INC. STATE THE PLAT HEREON IS A CORRECT REPRESENTATION OF A SURVEY MADE UNDER MY SUPERVISION ON THE 29th DAY OF MARCH, 2022 OF THE SHOWN JACKSON 27 SWSE 3054 AND THAT THE LOCATION HAS BEEN STAKED ON THE GROUND AS SHOWN ON THIS PLAT.

Notice: In accordance with Colorado State Law, any legal action based upon any defect in this survey plat must commence within three (3) years after first discovery of such defect. In no event, may any action based upon any defect in this survey plat be commenced more than ten (10) years from the date of certification shown hereon.

JACKSON 27 SWSE 3054



COLORADO PLS No. 38109

DRG RIFFIN & ASSOCIATES, INC.
(307) 362-5028 1414 ELK ST., ROCK SPRINGS, WY 82901

DRAWN: 6/29/22 - EMB

SCALE: 1" = 1000'

REVISED: NA

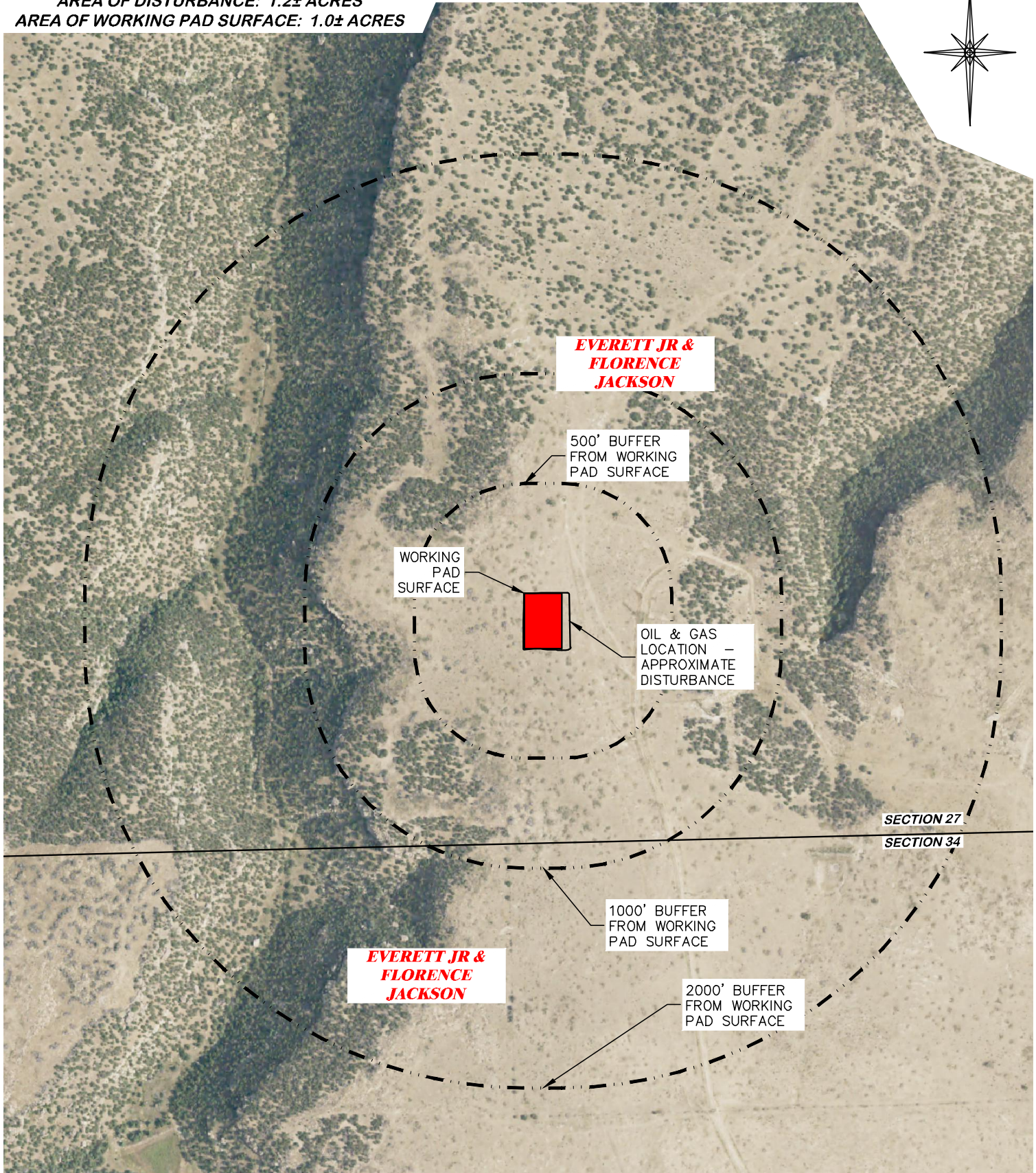
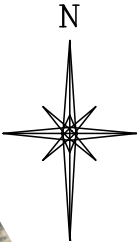
DRG JOB No. 22224

EXHIBIT A

**PLAT OF DRILLING LOCATION IN
SWSE, SECTION 27, FOR
BNL (ENTERPRISE) INC.**

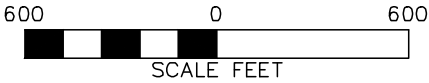
**931' F/SL, & 2386' F/EL, SECTION 27,
T. 30 S., R. 54 W., 6TH P.M.,
LAS ANIMAS COUNTY, COLORADO**

UNGRADED ELEVATION: 5532.7'
FINAL ELEVATION: 5531.9'
AREA OF DISTURBANCE: 1.2± ACRES
AREA OF WORKING PAD SURFACE: 1.0± ACRES




CULTURAL ITEMS:		
MEASURED FROM NEAREST EDGE OF THE PROPOSED WORKING PAD SURFACE		
BUILDING	5280'+ SW	
RESIDENTIAL BUILDING	5280'+ SW	
HIGH OCCUPANCY BUILDING	5280'+ N	
DOAA	5280'+ N	
PUBLIC ROAD	5280'+ SW	
ABOVE GROUND UTILITY	5280'+ NW	
RAILROAD	5280'+ NW	
PROPERTY LINE	5280'+ W	
SCHOOL FACILITY	5280'+ N	
SCHOOL PROPERTY LINE	5280'+ N	
CHILDCARE FACILITY	5280'+ N	
CHILDCARE PROPERTY LINE	5280'+ N	
DI COMMUNITY	0'	

CULTURAL FEATURE INFORMATION			
PRODUCTION FEATURE	0-500 FEET	501 - 1,000 FEET	1,001 - 2,000 FEET
	NUMBER	NUMBER	NUMBER
BUILDING	0	0	0
RESIDENTIAL BUILDING	0	0	0
HIGH OCCUPANCY BUILDING	0	0	0
SCHOOL PROPERTIES	0	0	0
SCHOOL FACILITIES	0	0	0
DOAA	0	0	0



JACKSON 27 SWSE 3054

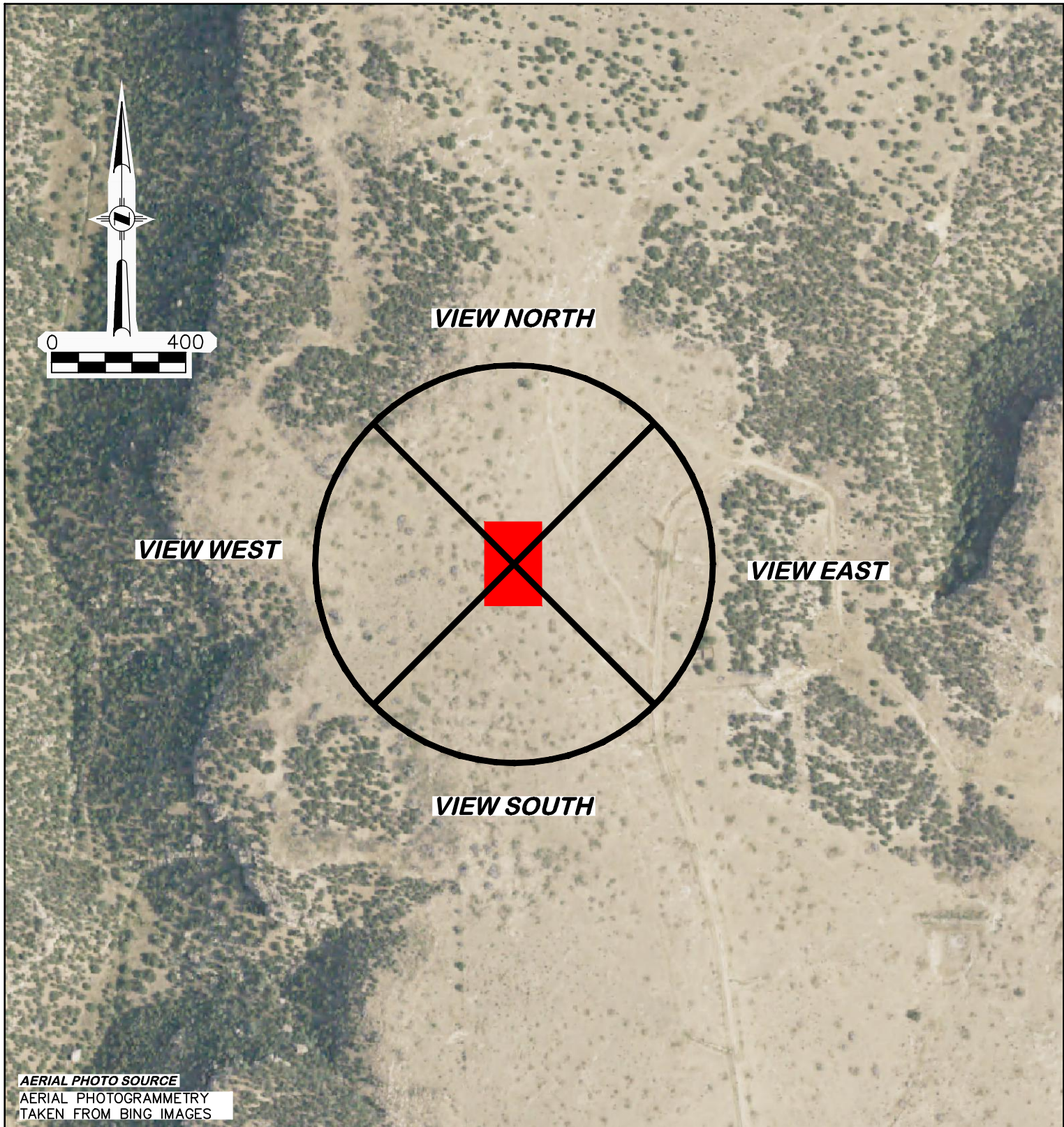


DRG RIFFIN & ASSOCIATES, INC.
(307) 362-5028 1414 ELK ST., ROCK SPRINGS, WY 82901

DRAWN: 6/29/22 - EMB	SCALE: 1" = 600'
REVISED: NA	DRG JOB No. 22224
	304b(3)C CULTURAL

CULTURAL DISTANCES DRAWING

**CULTURAL DISTANCES
BNL (ENTERPRISE) INC.
JACKSON 27 SWSE 3054
SWSE, SECTION 27, T. 30 S., R. 54 W., 6th P.M.,
LAS ANIMAS COUNTY, COLORADO**




AERIAL PHOTO SOURCE
AERIAL PHOTOGRAMMETRY
TAKEN FROM BING IMAGES

PAD LOCATION:

LAT: N 37.397895
LONG: W 103.447426

JACKSON 27 SWSE 3054

AERIAL LOCATION PHOTO	
BNL (ENTERPRISE) INC. JACKSON 27 SWSE 3054 SWSE, SECTION 27, T. 30 S., R. 54 W., 6th P.M., LAS ANIMAS COUNTY, COLORADO	
 (307) 362-5028 1414 ELK ST., ROCK SPRINGS, WY 82901	
DRAWN: 6/29/22 - EMB	SCALE: NONE
REVISED: 2/15/23 - DWB	DRG JOB No. 22224
UPDATE LAYOUT	304b(4) LOC PIC - SHEET 1 OF 3




WELL LOCATION LOOKING NORTH
4/1/22



WELL LOCATION LOOKING EAST
4/1/22

JACKSON 27 SWSE 3054

 DRG RIFFIN & ASSOCIATES, INC. <small>(307) 362-5028 1414 ELK ST., ROCK SPRINGS, WY 82901</small>		LOCATION PICTURES
DRAWN: 6/29/22 - EMB	SCALE: NONE	BNL (ENTERPRISE) INC. JACKSON 27 SWSE 3054 SWSE, SECTION 27, T. 30 S., R. 54 W., 6th P.M., LAS ANIMAS COUNTY, COLORADO
REVISED: 2/15/23 - DWB	DRG JOB No. 22224	
UPDATE LAYOUT	304b(4) LOC PIC - SHEET 2 OF 3	




WELL LOCATION LOOKING SOUTH
4/1/22



WELL LOCATION LOOKING WEST
4/1/22

JACKSON 27 SWSE 3054

 DRG RIFFIN & ASSOCIATES, INC. <small>(307) 362-5028 1414 ELK ST., ROCK SPRINGS, WY 82901</small>		LOCATION PICTURES
DRAWN: 6/29/22 - EMB	SCALE: NONE	BNL (ENTERPRISE) INC. JACKSON 27 SWSE 3054 SWSE, SECTION 27, T. 30 S., R. 54 W., 6th P.M., LAS ANIMAS COUNTY, COLORADO
REVISED: 2/15/23 - DWB	DRG JOB No. 22224	
UPDATE LAYOUT	304b(4) LOC PIC - SHEET 3 OF 3	

UNGRADED ELEVATION: 5532.7'
FINAL ELEVATION: 5531.9'
AREA OF DISTURBANCE: 1.2± ACRES
AREA OF WORKING PAD SURFACE: 1.0± ACRES

JACKSON 27 SWSE 3054

N

500

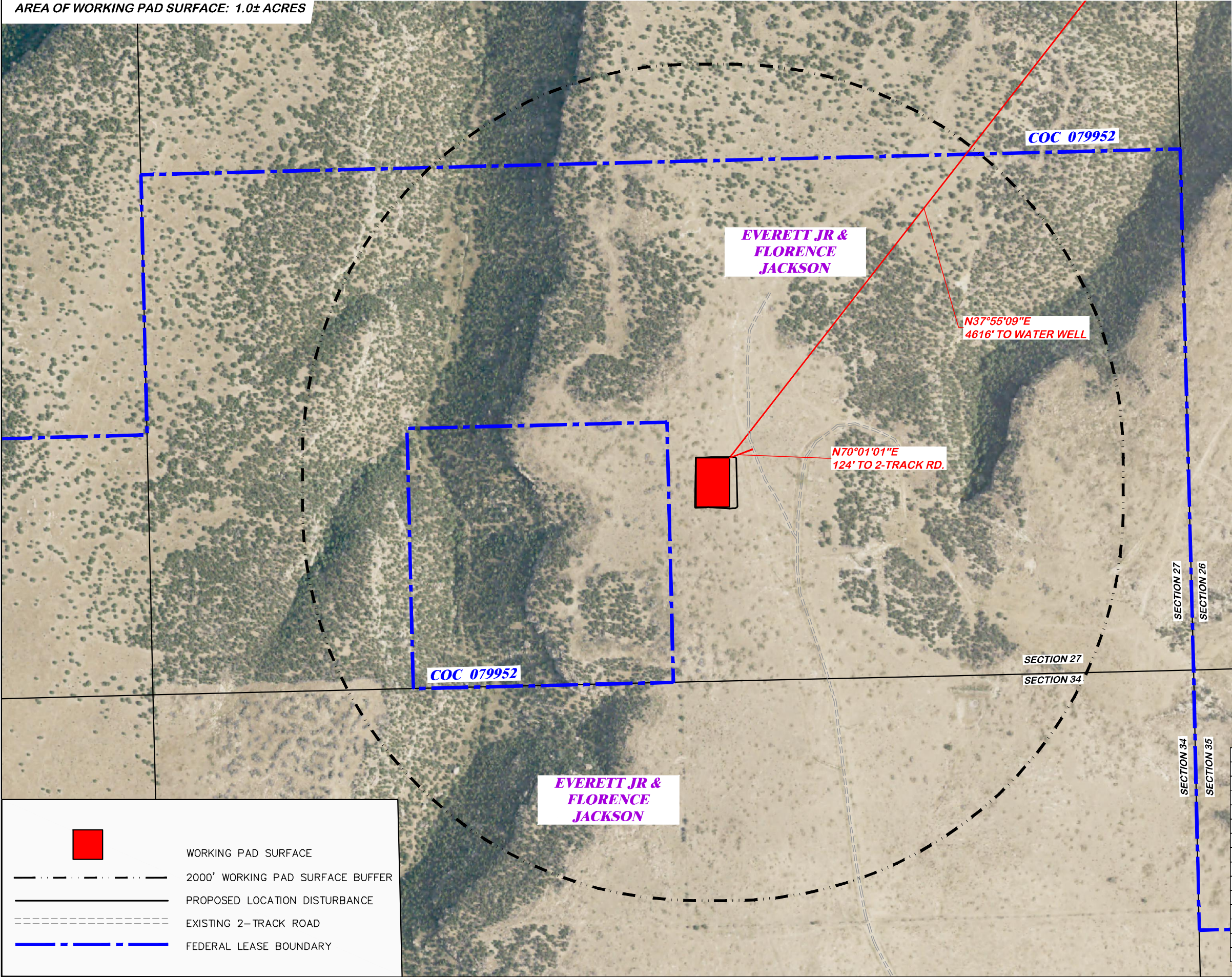
0

500

SCALE FEET

BEFORE DIGGING
CALL FOR
UTILITY LINE LOCATION

PAD LOCATION:
LAT: N 37.397895
LONG: W 103.447426



WORKING PAD SURFACE

2000' WORKING PAD SURFACE BUFFER

PROPOSED LOCATION DISTURBANCE

EXISTING 2-TRACK ROAD

FEDERAL LEASE BOUNDARY

LOCATION DRAWING FEATURES 304b(7)A	
FEATURE	DISTANCE
i BUILDING	5280'+ SW
i BUILDING UNITS	5280'+ SW
ii PUBLICLY MAINTAINED ROADS AND TRAILS	5280'+ SW
iii FENCES	5280'+ N
iv ABOVE GROUND UTILITIES	5280'+ NW
v RAILROADS	5280'+ NW
vi PIPELINES	5280'+ NW
vii MINES	5280'+ S
viii OIL AND GAS WELLS AND PRODUCTION FACILITIES	5280'+ N
ix INJECTION WELLS	5280'+ N
x PLUGGED OIL AND GAS WELLS	5280'+ N
xi KNOWN WATER WELLS	4616' NE
xii KNOWN SEWERS WITH MANHOLES	5280'+ N

RIFFIN & ASSOCIATES, INC.
1414 ELK ST., ROCK SPRINGS, WY 82901
(307) 362-5028

DRAWN: 6/29/22 - EMB

REVISED: 4/8/24 - JMB

UPDATED TABLE

SCALE: 1" = 500'

DRG JOB No. 22224

304b(7)A LOC AERIAL

LOCATION DRAWING

BNL (ENTERPRISE) INC.
JACKSON 27 SWSE 3054
SWSE, SECTION 27, T.30 S., R.54 W., 6th P.M.,
LAS ANIMAS COUNTY, COLORADO

UNGRADED ELEVATION: 5532.7'
FINAL ELEVATION: 5531.9'
AREA OF DISTURBANCE: 1.2± ACRES
AREA OF WORKING PAD SURFACE: 1.0± ACRES

JACKSON 27 SWSE 3054

N

500

0

500

SCALE FEET

BEFORE DIGGING
CALL FOR
UTILITY LINE LOCATION

PAD LOCATION:
LAT: N 37.397895
LONG: W 103.447426

WORKING PAD SURFACE

2000' WORKING PAD SURFACE BUFFER

PROPOSED LOCATION DISTURBANCE

EXISTING 2-TRACK ROAD

FEDERAL LEASE BOUNDARY

LOCATION DRAWING FEATURES 304b(7)A	
FEATURE	DISTANCE
i BUILDING	5280'+ SW
i BUILDING UNITS	5280'+ SW
ii PUBLICLY MAINTAINED ROADS AND TRAILS	5280'+ SW
iii FENCES	5280'+ N
iv ABOVE GROUND UTILITIES	5280'+ NW
v RAILROADS	5280'+ NW
vi PIPELINES	5280'+ NW
vii MINES	5280'+ S
viii OIL AND GAS WELLS AND PRODUCTION FACILITIES	5280'+ N
ix INJECTION WELLS	5280'+ N
x PLUGGED OIL AND GAS WELLS	5280'+ N
xi KNOWN WATER WELLS	4616' NE
xii KNOWN SEWERS WITH MANHOLES	5280'+ N

DRG

RIFFIN & ASSOCIATES, INC.

(307) 962-5028

1414 ELK ST., ROCK SPRINGS, WY 82901

DRAWN: 6/29/22 - EMB

REVISD: 4/8/24 - JMB

UPDATED TABLE

SCALE: 1" = 500'

DRG JOB No. 22224

304b(7)A LOC DWG

LOCATION DRAWING

BNL (ENTERPRISE) INC.
JACKSON 27 SWSE 3054
SWSE, SECTION 27, T.30 S., R.54 W., 6th P.M.,
LAS ANIMAS COUNTY, COLORADO

UNGRADED ELEVATION: 5532.7'
FINAL ELEVATION: 5531.9'
AREA OF DISTURBANCE: 1.2± ACRES
AREA OF WORKING PAD SURFACE: 1.0± ACRES

JACKSON 27 SWSE 3054

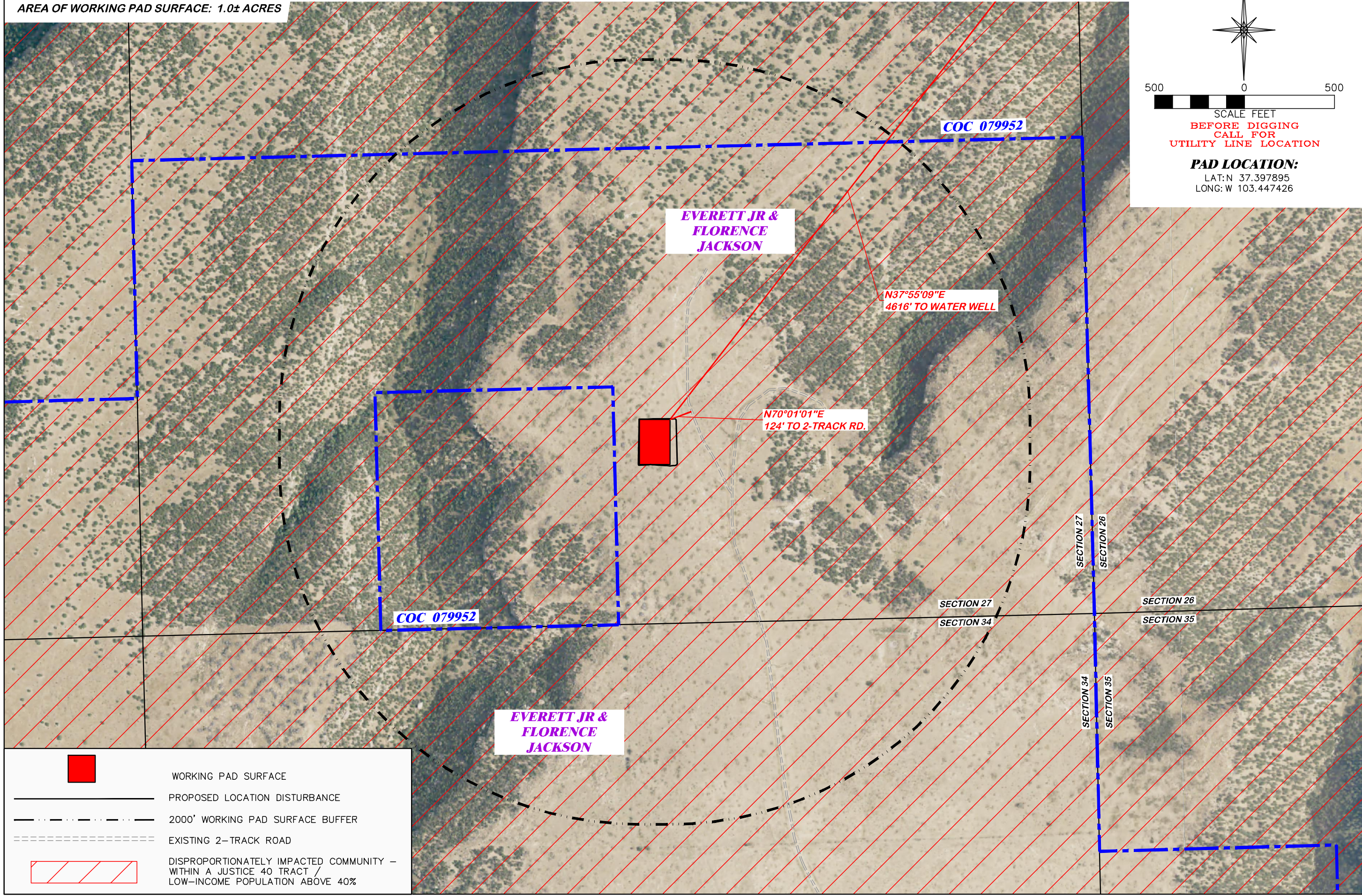
N

5000500

SCALE FEET

BEFORE DIGGING
CALL FOR
UTILITY LINE LOCATION

PAD LOCATION:
LAT: N 37.397895
LONG: W 103.447426



WORKING PAD SURFACE

PROPOSED LOCATION DISTURBANCE

2000' WORKING PAD SURFACE BUFFER

EXISTING 2-TRACK ROAD

DISPROPORTIONATELY IMPACTED COMMUNITY –
WITHIN A JUSTICE 40 TRACT /
LOW-INCOME POPULATION ABOVE 40%

DISPROPORTIONATELY IMPACTED COMMUNITIES MAP

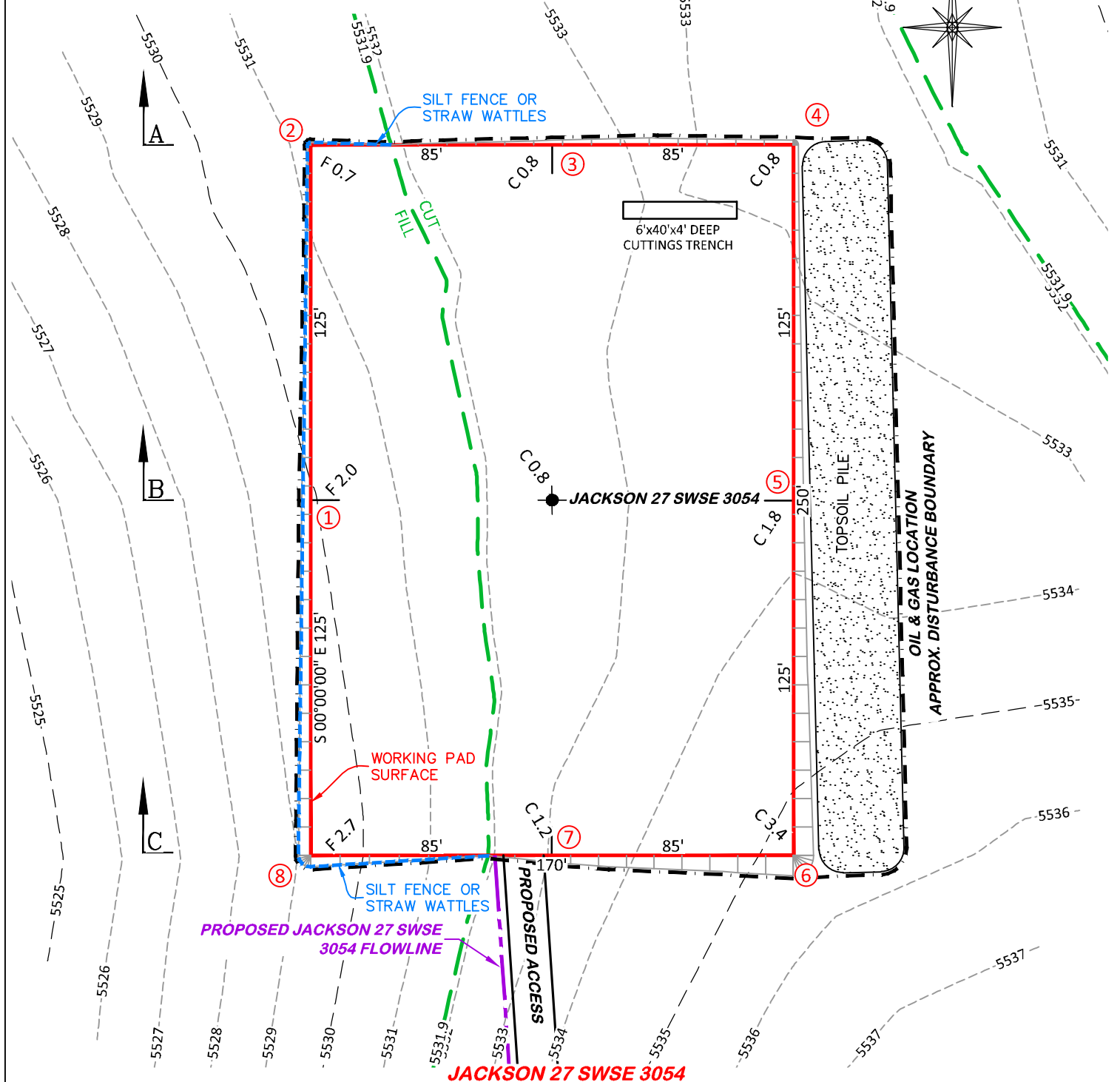
DRG RIFFIN & ASSOCIATES, INC.
1414 ELK ST., ROCK SPRINGS, WY 82901
(307) 362-5028

DRAWN: 6/29/22 - EMB
REVISED: 4/8/24 - JMB
UPDATED TABLE

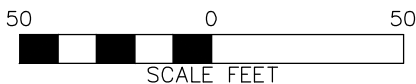
SCALE: 1" = 500'
DRG JOB No. 22224
304b(7)J DIC MAP

BNL (ENTERPRISE) INC.
JACKSON 27 SWSE 3054
SWSE, SECTION 27, T.30 S., R.54 W., 6th P.M.,
LAS ANIMAS COUNTY, COLORADO

UNGRADED ELEVATION: 5532.7'
 FINAL ELEVATION: 5531.9'
 PROPOSED AREA OF DISTURBANCE: 1.2± ACRES
 DRAINS TO CEDAR PEN CANYON
 AREA OF WORKING PAD SURFACE: 1.0± ACRES
 PROPOSED ACCESS DISTURBANCE: 18.8± ACRES



NOTE: THE EARTH QUANTITIES ON THIS DRAWING ARE ESTIMATED AND THE USE OF SAID QUANTITIES IS AT THE RESPONSIBILITY OF THE USER.



DRG RIFFIN & ASSOCIATES, INC.
 (307) 362-5028 1414 ELK ST., ROCK SPRINGS, WY 82901

CONSTRUCTION LAYOUT DRAWING 1 OF 5

PLAN

BNL (ENTERPRISE) INC.
JACKSON 27 SWSE 3054
SWSE, SECTION 27, T. 30 S., R. 54 W., 6th P.M.,
LAS ANIMAS COUNTY, COLORADO

ESTIMATED EARTHWORK

ITEM	CUT	FILL	TOPSOIL	EXCESS
PAD	1,347 CY	497 CY	834 CY	16 CY
PIT	NONE			NONE
TOTALS	1,347 CY	497 CY	834 CY	16 CY

UNGRADED ELEVATION: 5532.7'

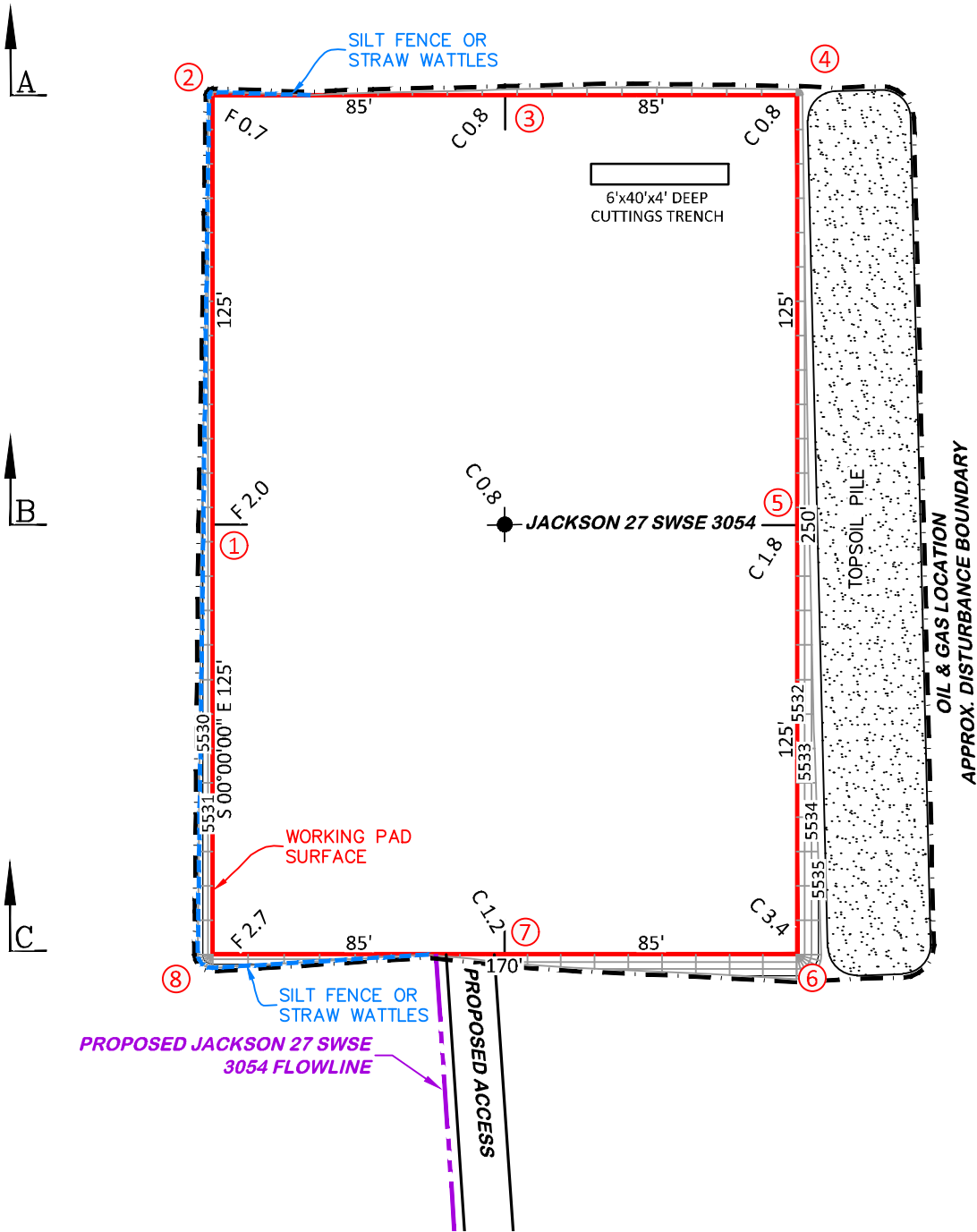
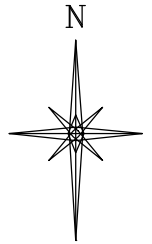
FINAL ELEVATION: 5531.9'

PROPOSED AREA OF DISTURBANCE: 1.2± ACRES

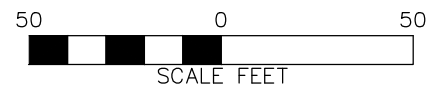
DRAINS TO CEDAR PEN CANYON

AREA OF WORKING PAD SURFACE: 1.0± ACRES

PROPOSED ACCESS DISTURBANCE: 18.8± ACRES



JACKSON 27 SWSE 3054



RIFFIN & ASSOCIATES, INC.

(307) 362-5028

1414 ELK ST., ROCK SPRINGS, WY 82901

DRAWN: 6/29/22 - EMB

SCALE: 1" = 50'

REVISED: 2/15/23 - DWB

DRG JOB No. 22224

UPDATE RIG & PRODUCTION

304b(7)Bi DSGN CONT

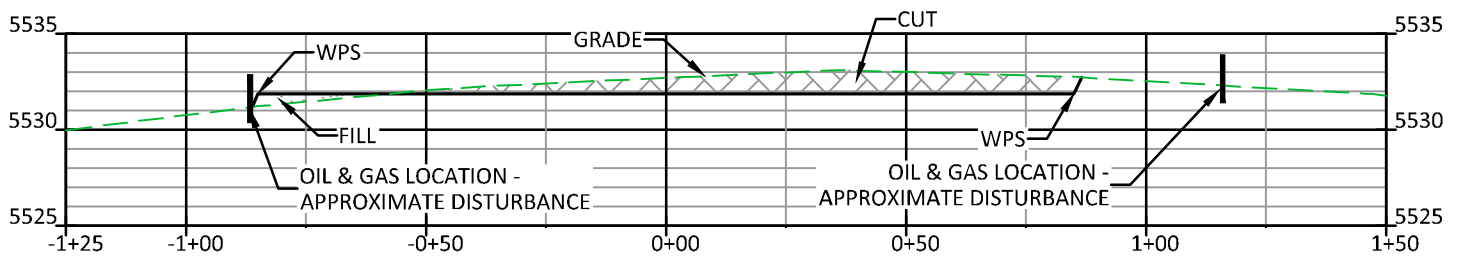
CONSTRUCTION LAYOUT DRAWING 3 OF 5

**CONSTRUCTION LAYOUT DRAWING
PLANNED CUT-FILL CONTOURS**

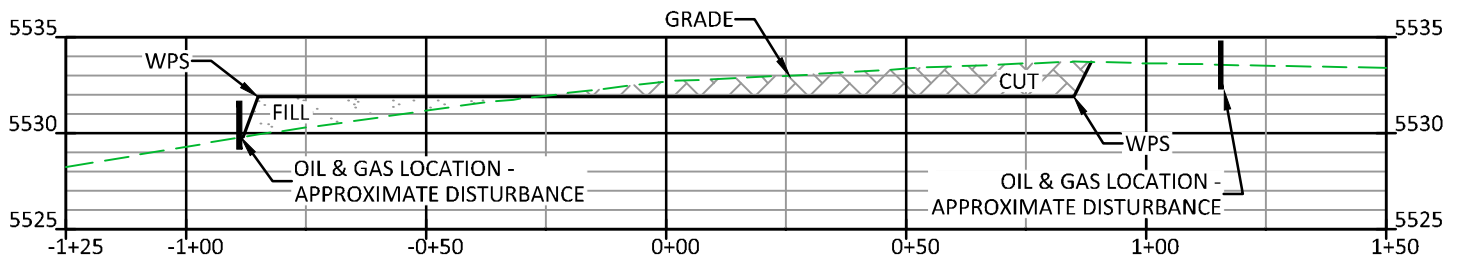
BNL (ENTERPRISE) INC.

JACKSON 27 SWSE 3054

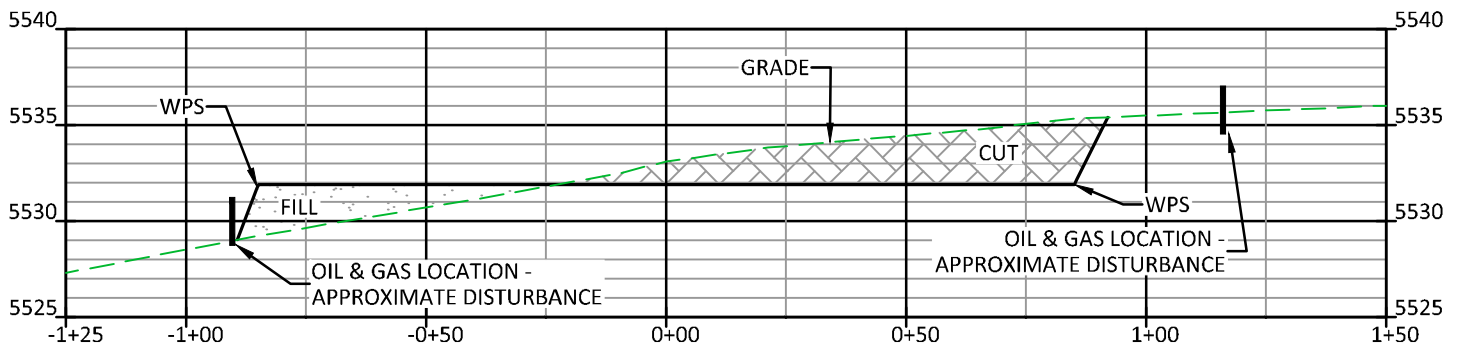
**SWSE, SECTION 27, T. 30 S., R. 54 W., 6th P.M.,
LAS ANIMAS COUNTY, COLORADO**



A



B



C

CUT SLOPES - 2:1

FILL SLOPES - 1.5:1

JACKSON 27 SWSE 3054

DRG **RIFFIN & ASSOCIATES, INC.**
(307) 362-5028 1414 ELK ST., ROCK SPRINGS, WY 82901

DRAWN: 6/29/22 - EMB

SCALE: H - 1" = 40' V - 1" = 10'

REVISED: NA

DRG JOB No. 22224

304b(7)Bi XSEC

CONSTRUCTION LAYOUT DRAWING 2 OF 5

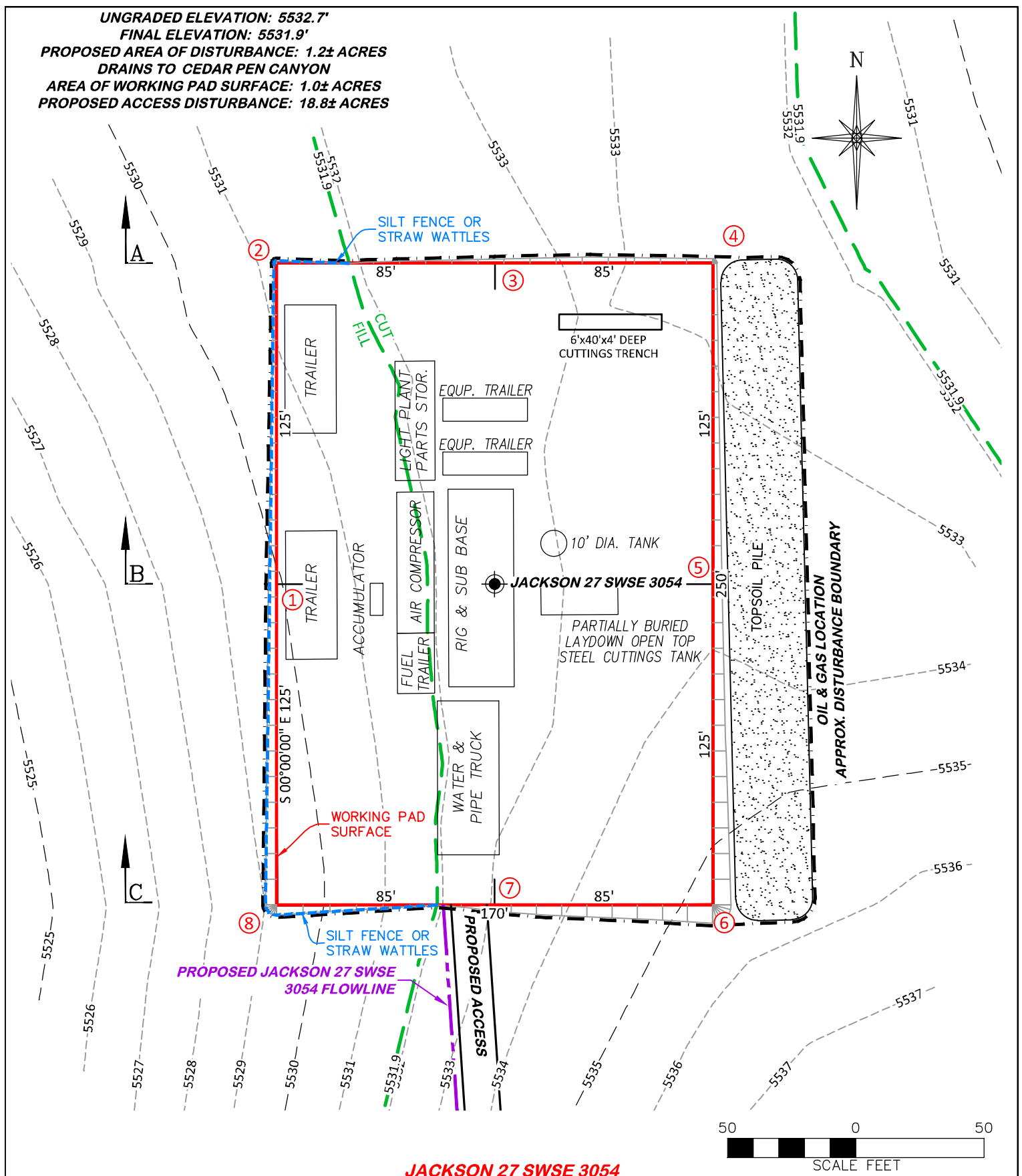
**CONSTRUCTION LAYOUT DRAWING
CROSS-SECTIONS**

BNL (ENTERPRISE) INC.

JACKSON 27 SWSE 3054

**SWSE, SECTION 27, T. 30 S., R. 54 W., 6th P.M.,
LAS ANIMAS COUNTY, COLORADO**

PROPOSED ACCESS DISTURBANCE: 18.8± ACRES



JACKSON 27 SWSE 3054

DRG **RIFFIN & ASSOCIATES, INC.**
1414 ELK ST., ROCK SPRINGS, WY 82901

(307) 362-5028

1414 ELK ST., ROCK SPRINGS, WY 82901

DRAWN: 6/29/22 - EMB

SCALE: 1" = 50'

REVISED: 2/15/23 - DWB

DRG JOB No. 22224

UPDATE RIG & PRODUCTION

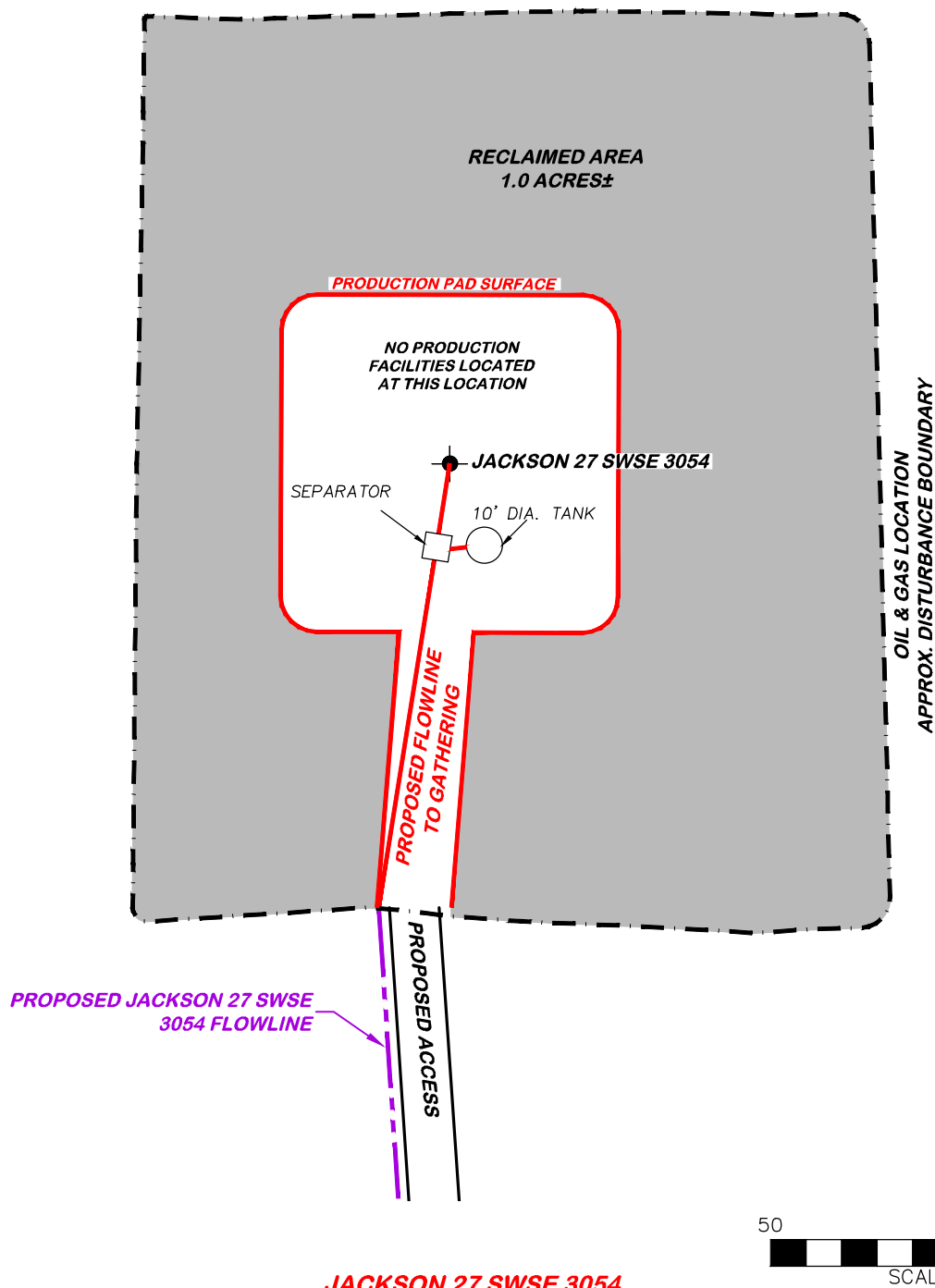
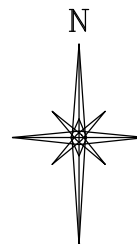
304b(7)Bii RIG

PRELIMINARY RIG LAYOUT DRAWING
BNL (ENTERPRISE) INC.

JACKSON 27 SWSE 3054

**SWSE, SECTION 27, T. 30 S., R. 54 W., 6th P.M.,
LAS ANIMAS COUNTY, COLORADO**

APPROXIMATE DISTURBANCE AREA 1.2± ACRES
PROPOSED RECLAMATION AREA: 1.0± ACRES
INTERIM RECLAMATION DISTURBANCE: 0.2± ACRES



JACKSON 27 SWSE 3054



RIFFIN & ASSOCIATES, INC.

(307) 362-5028

1414 ELK ST., ROCK SPRINGS, WY 82901

DRAWN: 6/29/22 - EMB

SCALE: 1" = 50'

REVISED: 2/15/23 - DWB

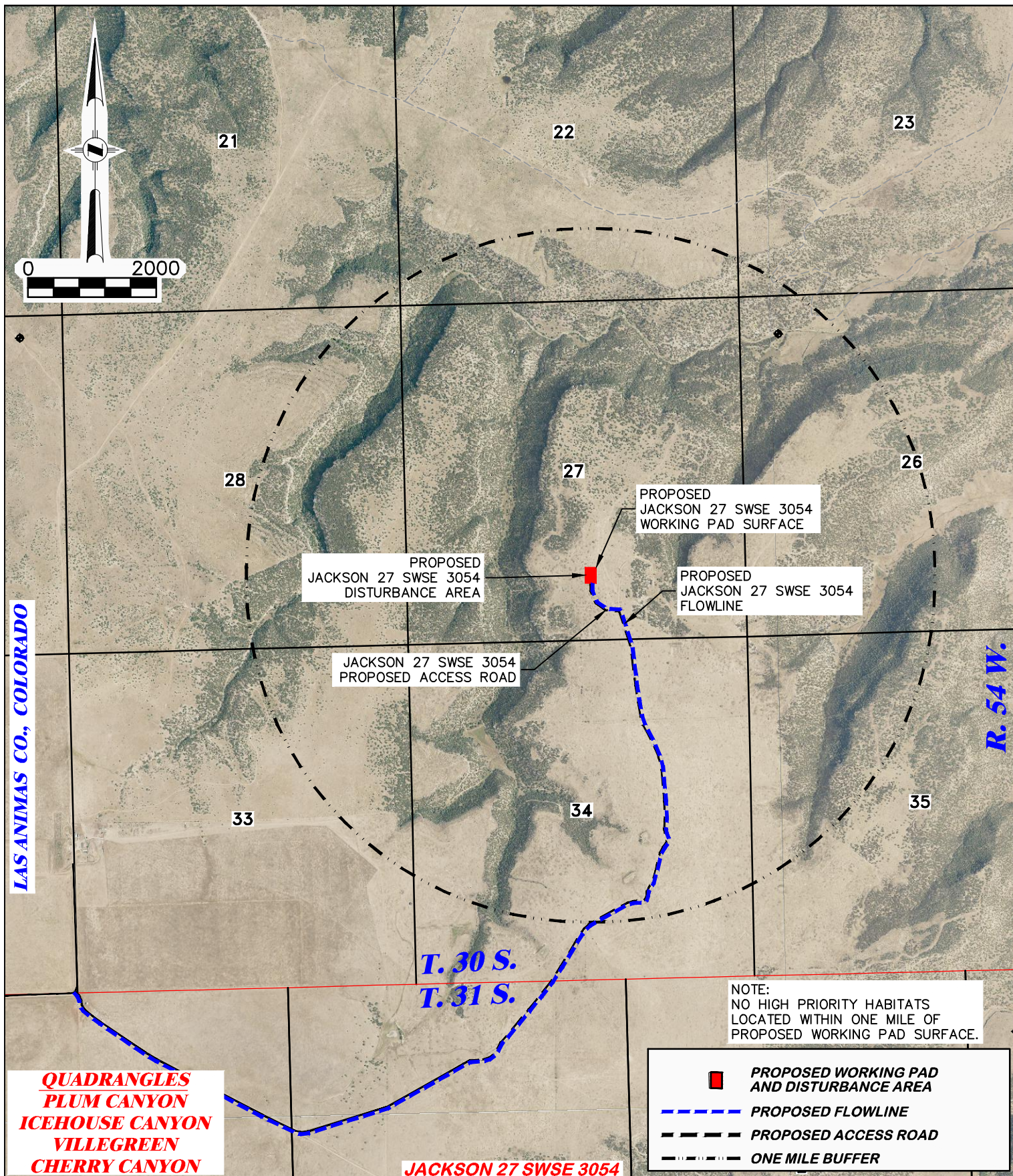
DRG JOB No. 22224

UPDATE RIG & PRODUCTION

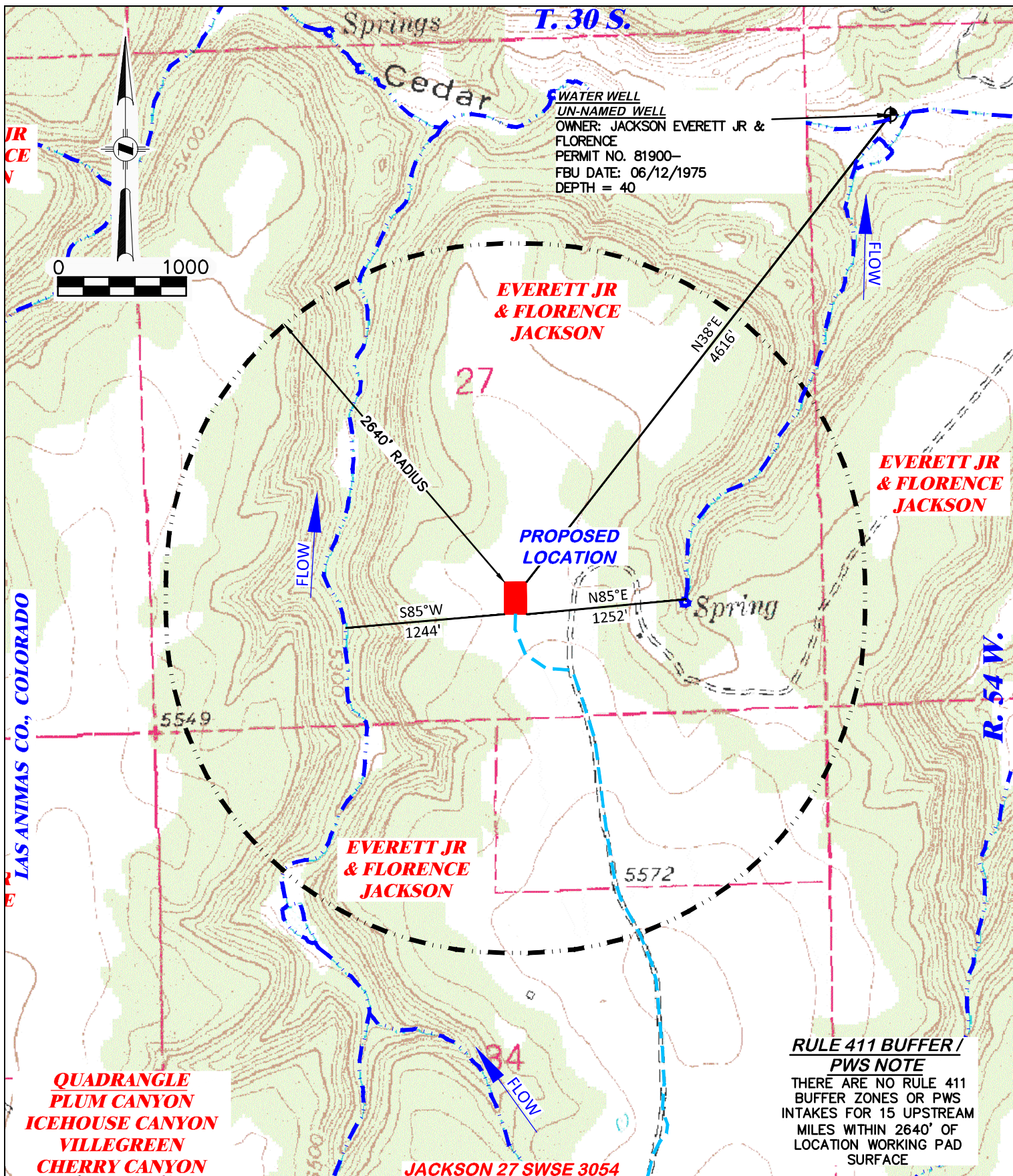
304b(7)Bv FACILITY

CONSTRUCTION LAYOUT DRAWING 5 OF 5

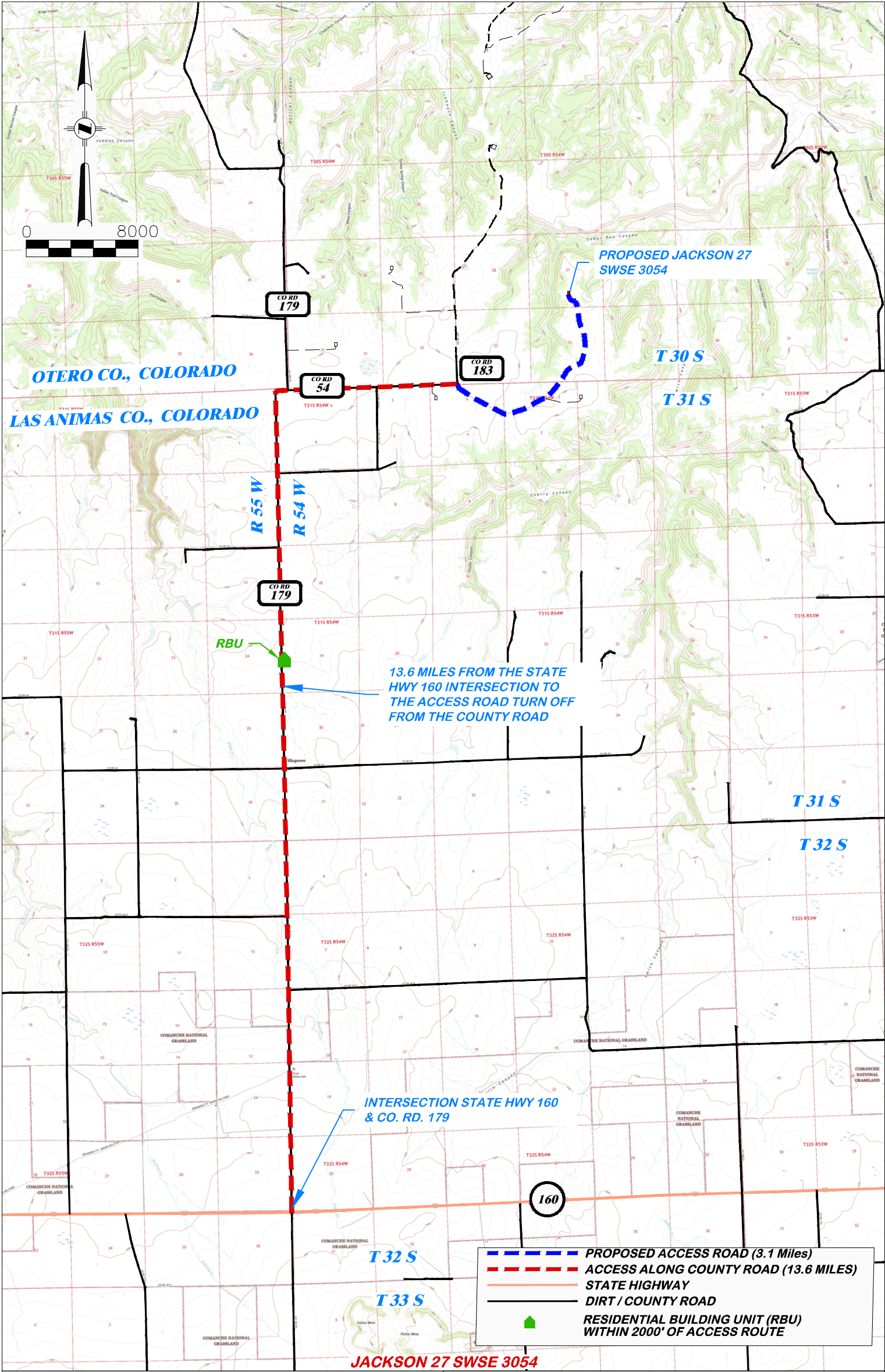
**FACILITY LAYOUT DRAWING
BNL (ENTERPRISE) INC.
JACKSON 27 SWSE 3054
SWSE, SECTION 27, T. 30 S., R. 54 W., 6th P.M.,
LAS ANIMAS COUNTY, COLORADO**



DRG RIFFIN & ASSOCIATES, INC. (307) 362-5028 1414 ELK ST., ROCK SPRINGS, WY 82901		WILDLIFE HABITAT DRAWING	
DRAWN: 6/29/22 - EMB	SCALE: 1" = 2000'	BNL (ENTERPRISE) INC. JACKSON 27 SWSE 3054 SWSE, SECTION 27, T. 30 S., R. 54 W., 6th P.M., LAS ANIMAS COUNTY, COLORADO	
REVISED: NA	DRG JOB No. 22224		
	304b(7)C WILDLIFE		



DRG RIFFIN & ASSOCIATES, INC. (307) 362-5028 1414 ELK ST., ROCK SPRINGS, WY 82901		HYDROLOGY MAP BNL (ENTERPRISE) INC. JACKSON 27 SWSE 3054 SWSE, SECTION 27, T. 30 S., R. 54 W., 6th P.M., LAS ANIMAS COUNTY, COLORADO	
DRAWN: 6/29/22 - EMB	SCALE: 1" = 1000'	HISTORIC SPRING	PERENNIAL FLOW
REVISED: NA	DRG JOB No. 22224	INTERMITTENT FLOW	EXISTING ROAD
304b(7)E HYDRO			





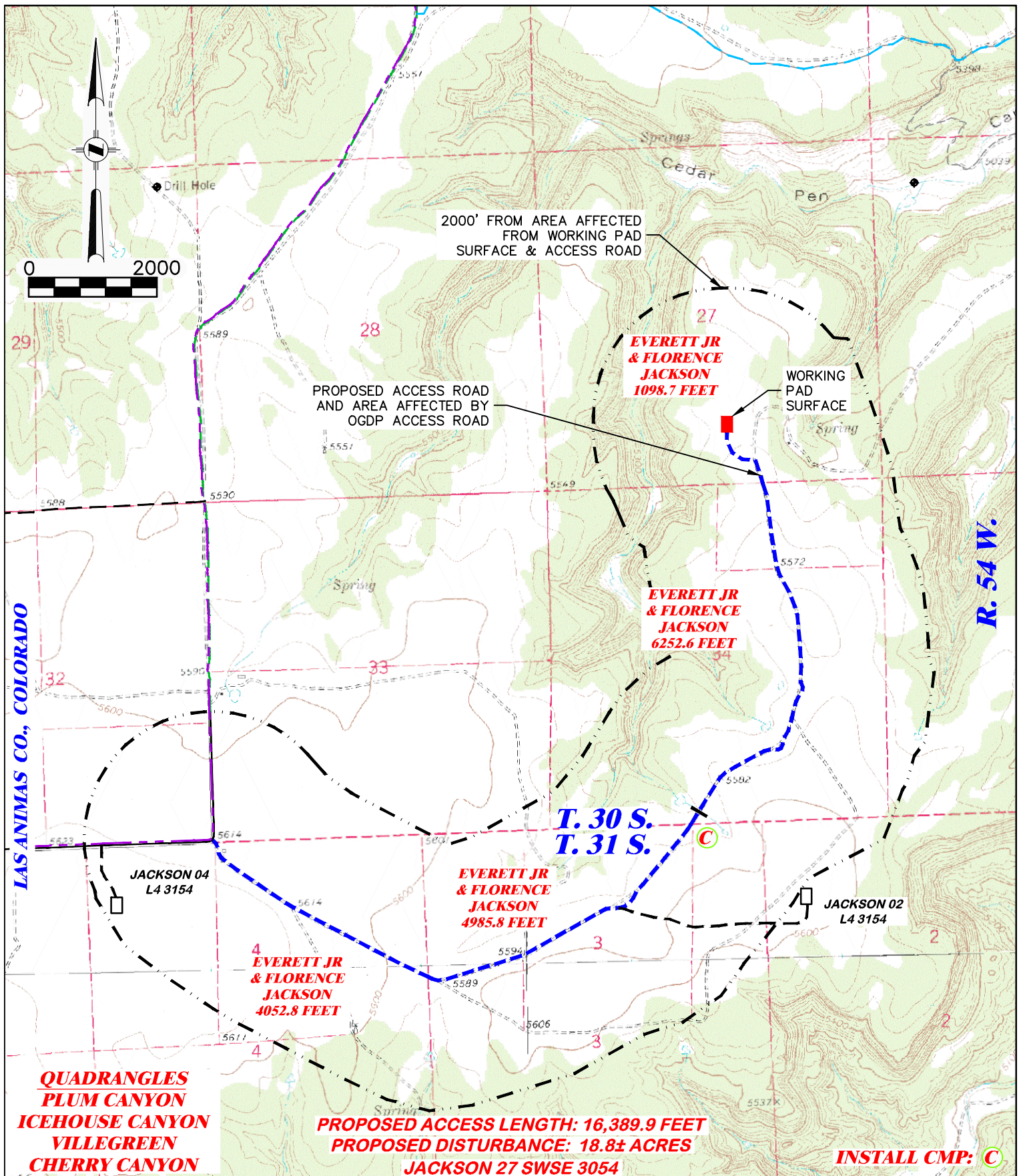
DRG
(307) 362-5028




RIFFIN & ASSOCIATES, INC.
1414 ELK ST., ROCK SPRINGS, WY 82901

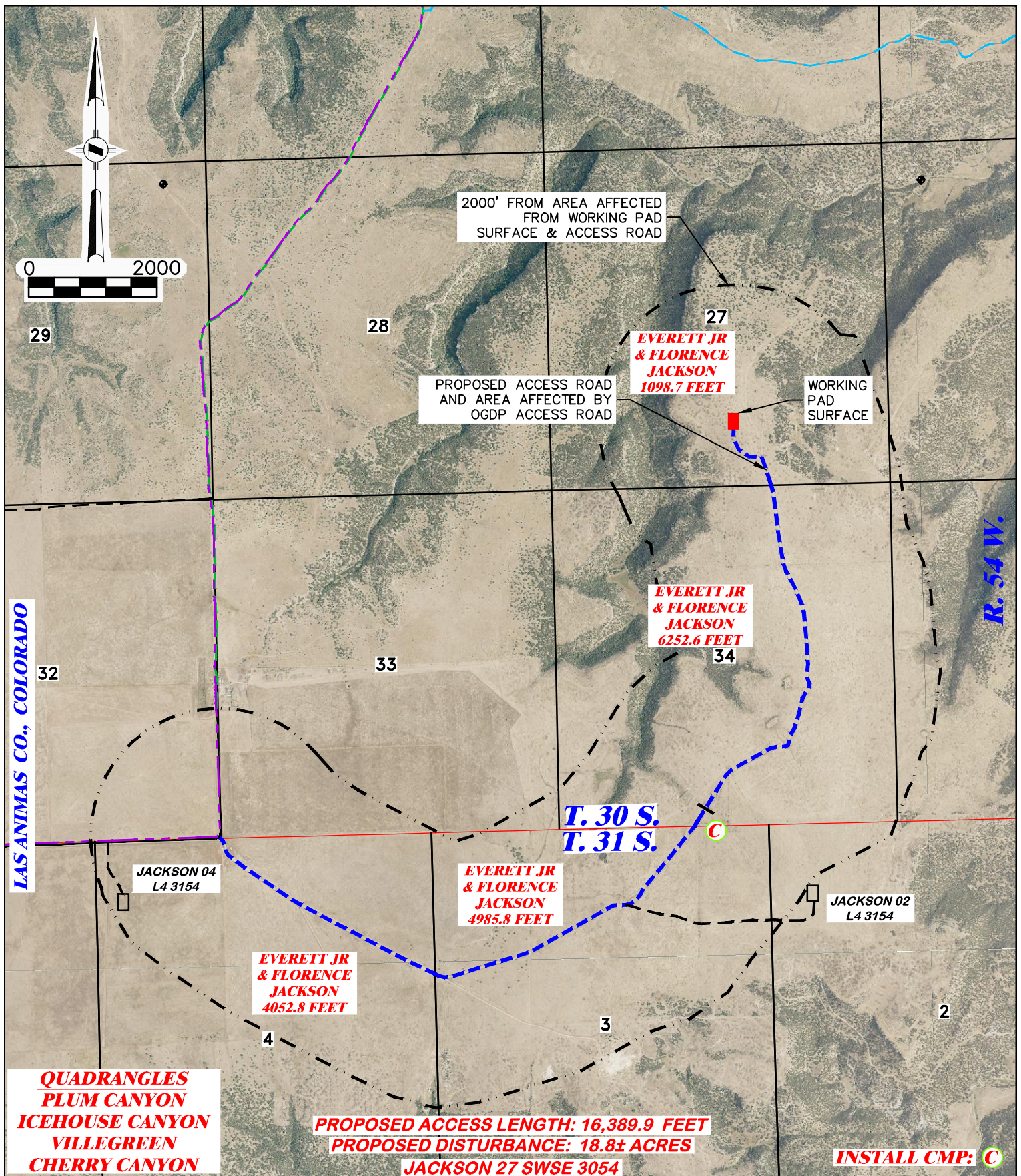
DRAWN: 6/29/22 - EMB	SCALE: 1" = 8000'
REVISED: NA	DRG JOB No. 22224
	304b(7)F ACCESS



PROPOSED ACCESS ROAD MAP

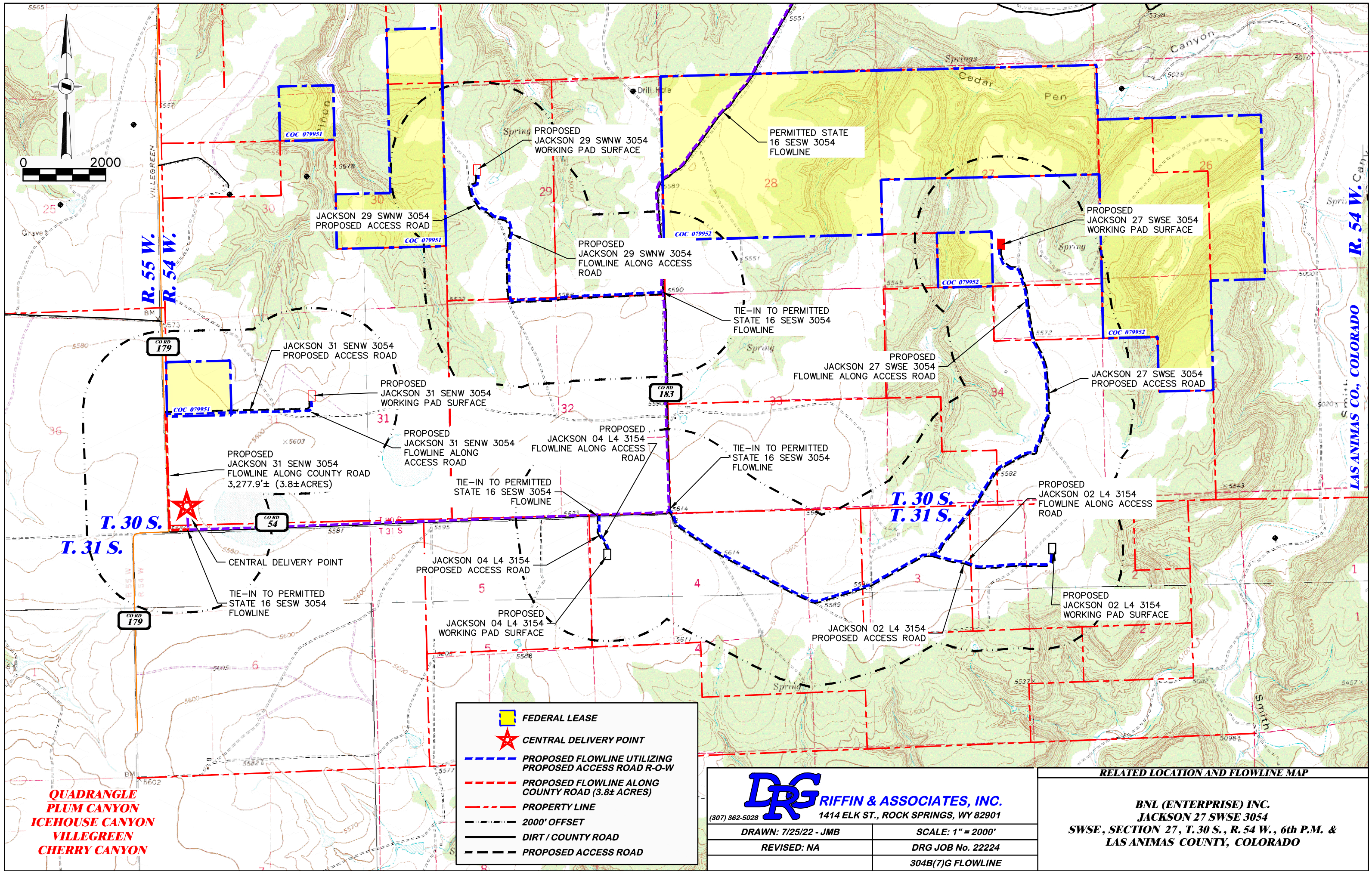
HAUL ROUTE
BNL (ENTERPRISE) INC.
JACKSON 27 SWSE 3054
SWSE, SECTION 27, T. 30 S., R. 54 W., 6th P.M.,
LAS ANIMAS COUNTY, COLORADO

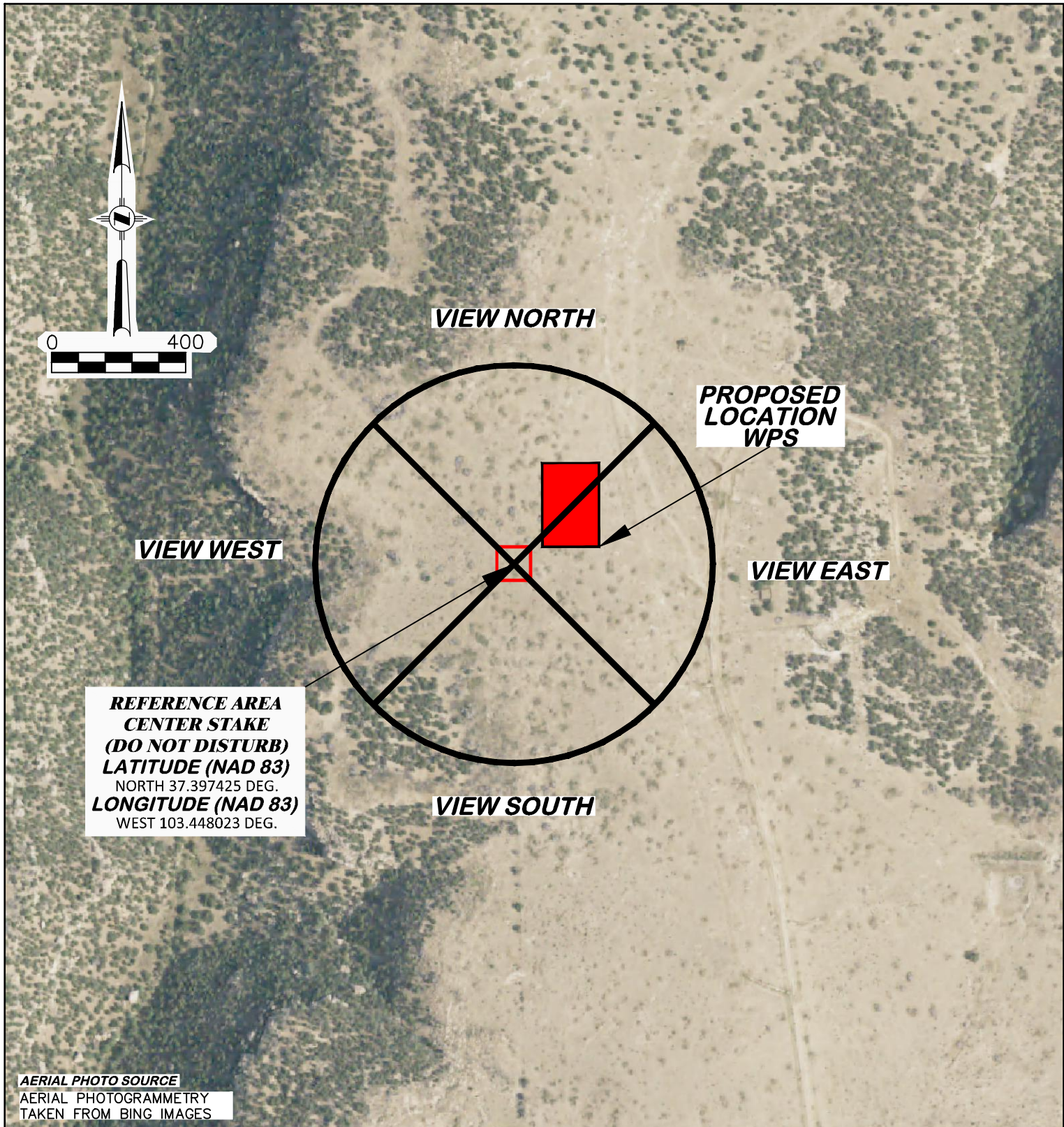


 RIFFIN & ASSOCIATES, INC. (307) 362-5028 1414 ELK ST., ROCK SPRINGS, WY 82901		PROPOSED NEW ACCESS MAP BNL (ENTERPRISE) INC. JACKSON 27 SWSE 3054 SWSE, SECTION 27, T.30 S., R. 54 W., 6th P.M., LAS ANIMAS COUNTY, COLORADO	
DRAWN: 6/29/22 - EMB	SCALE: 1" = 2000'		PROPOSED WORKING PAD SURFACE
REVISED: NA	DRG JOB No. 22224		
304b(7)F ROAD SHEET 1 OF 2		PROPOSED ACCESS W/ AFFECTED AREA 	



<div>RIFFIN & ASSOCIATES, INC.</div> <div><small>(307) 362-5028</small> 1414 ELK ST., ROCK SPRINGS, WY 82901</div>		<div>PROPOSED NEW ACCESS MAP</div> <div>BNL (ENTERPRISE) INC.</div> <div>JACKSON 27 SWSE 3054</div> <div>SWSE, SECTION 27, T.30 S., R. 54 W., 6th P.M.,</div> <div>LAS ANIMAS COUNTY, COLORADO</div>	
DRAWN: 6/29/22 - EMB	SCALE: 1" = 2000'	<div></div>	PROPOSED WORKING PAD SURFACE
REVISED: NA	DRG JOB No. 22224		
304b(7)F ROAD SHEET 2 OF 2		PROPOSED ACCESS W/ AFFECTED AREA - - - - -	






AERIAL PHOTO SOURCE
AERIAL PHOTOGRAMMETRY
TAKEN FROM BING IMAGES

PAD LOCATION:

LAT: N 37.397895
LONG: W 103.447426

JACKSON 27 SWSE 3054

 (307) 362-5028 1414 ELK ST., ROCK SPRINGS, WY 82901		REFERENCE AREA PHOTOS	
DRAWN: 6/29/22 - EMB		BNL (ENTERPRISE) INC. JACKSON 27 SWSE 3054 SWSE, SECTION 27, T. 30 S., R. 54 W., 6th P.M., LAS ANIMAS COUNTY, COLORADO	
REVISD: 2/15/23 - DWB			
UPDATE LAYOUT			
SCALE: NONE			
DRG JOB No. 22224			
304b(9) REF PIC - SHEET 1 OF 3			




REFERENCE AREA LOOKING NORTH
4/1/22



REFERENCE AREA LOOKING EAST
4/1/22

JACKSON 27 SWSE 3054

 DRG RIFFIN & ASSOCIATES, INC. <small>(307) 362-5028 1414 ELK ST., ROCK SPRINGS, WY 82901</small>		REFERENCE AREA PHOTOS
DRAWN: 6/29/22 - EMB	SCALE: NONE	<i>BNL (ENTERPRISE) INC.</i> <i>JACKSON 27 SWSE 3054</i> <i>SWSE, SECTION 27, T. 30 S., R. 54 W., 6th P.M.,</i> <i>LAS ANIMAS COUNTY, COLORADO</i>
REVISED: 2/15/23 - DWB	DRG JOB No. 22224	
UPDATE LAYOUT	304b(9) REF PIC - SHEET 2 OF 3	




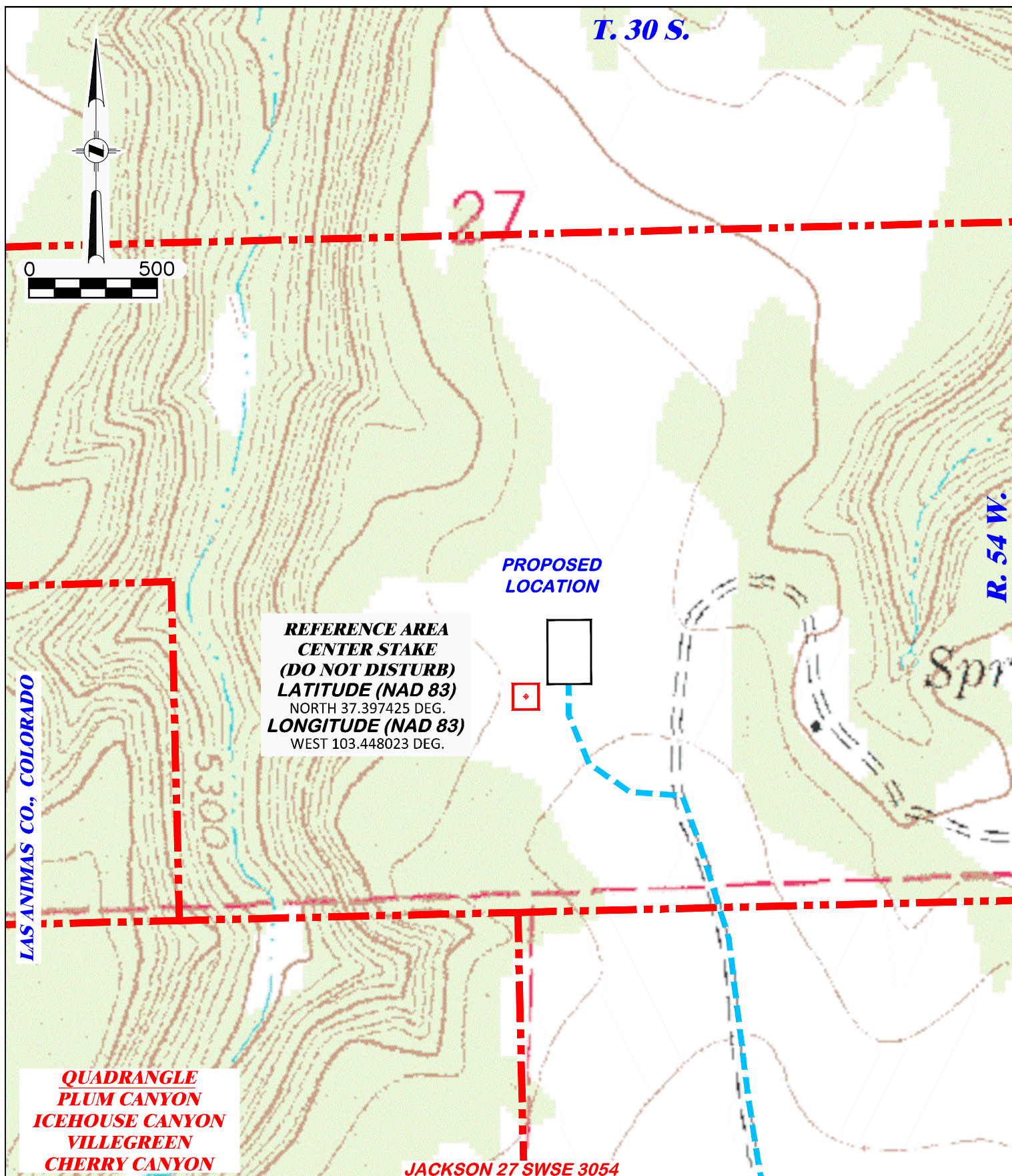
REFERENCE AREA LOOKING SOUTH
4/1/22



REFERENCE AREA LOOKING WEST
4/1/22

JACKSON 27 SWSE 3054

<div>  RIFFIN & ASSOCIATES, INC. <small>(307) 362-5028 1414 ELK ST., ROCK SPRINGS, WY 82901</small> </div>		REFERENCE AREA PHOTOS
DRAWN: 6/29/22 - EMB	SCALE: NONE	<i>BNL (ENTERPRISE) INC.</i> <i>JACKSON 27 SWSE 3054</i> <i>SWSE, SECTION 27, T. 30 S., R. 54 W., 6th P.M.,</i> <i>LAS ANIMAS COUNTY, COLORADO</i>
REVISED: 2/15/23 - DWB	DRG JOB No. 22224	
UPDATE LAYOUT	304b(9) REF PIC - SHEET 3 OF 3	



DRG **RIFFIN & ASSOCIATES, INC.**
(307) 362-5028 1414 ELK ST., ROCK SPRINGS, WY 82901

DRAWN: 6/29/22 - EMB

REVISED: NA

SCALE: 1" = 500'

DRG JOB No. 22224

304b(9)Bi REF AREA

REFERENCE AREA MAP

BNL (ENTERPRISE) INC.
JACKSON 27 SWSE 3054
SWSE, SECTION 27, T. 30 S., R. 54 W., 6th P.M.,
LAS ANIMAS COUNTY, COLORADO

UNGRADED ELEVATION: 5532.7'

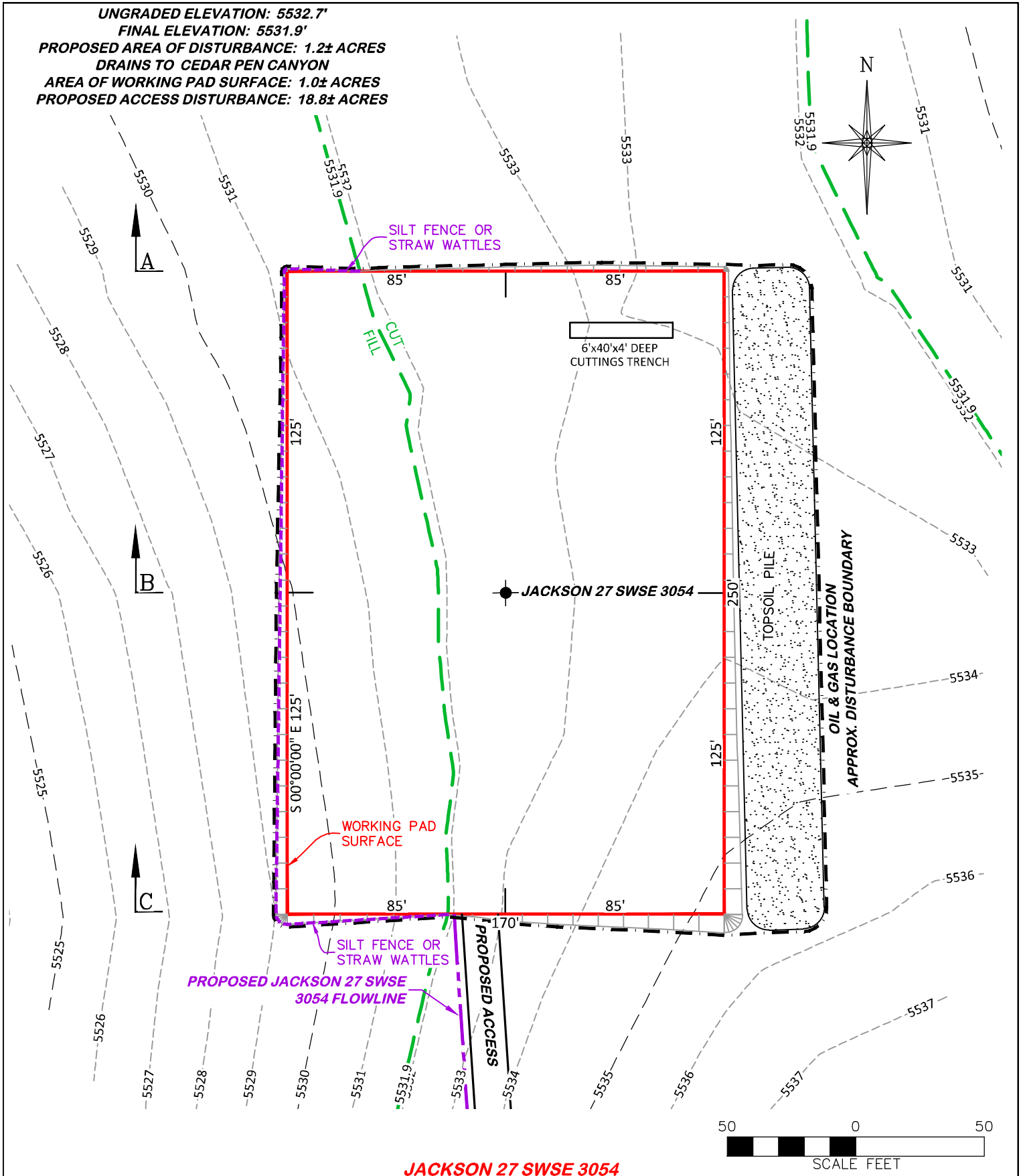
FINAL ELEVATION: 5531.9'

PROPOSED AREA OF DISTURBANCE: 1.2± ACRES

DRAINS TO CEDAR PEN CANYON

AREA OF WORKING PAD SURFACE: 1.0± ACRES

PROPOSED ACCESS DISTURBANCE: 18.8± ACRES



JACKSON 27 SWSE 3054



RIFFIN & ASSOCIATES, INC.

(307) 362-5028

1414 ELK ST., ROCK SPRINGS, WY 82901

DRAWN: 6/29/22 - EMB

SCALE: 1" = 50'

REVISED: 2/15/23 - DWB

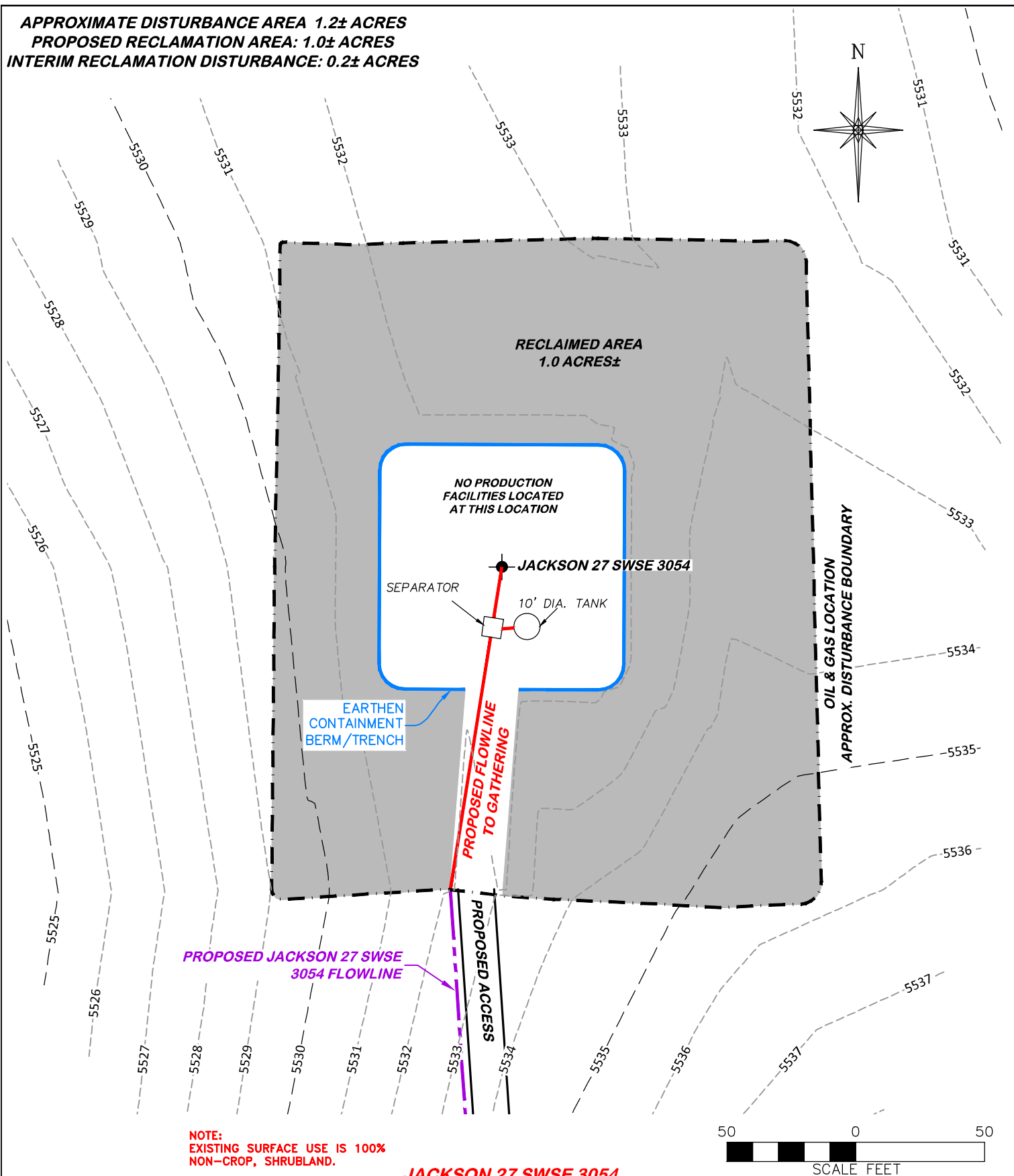
DRG JOB No. 22224

UPDATE RIG & PRODUCTION

304c(15) BMP

STORMWATER AND EROSION CONTROL PLAN
BNL (ENTERPRISE) INC.
JACKSON 27 SWSE 3054
SWSE, SECTION 27, T. 30 S., R. 54 W., 6th P.M.,
LAS ANIMAS COUNTY, COLORADO

APPROXIMATE DISTURBANCE AREA 1.2± ACRES
PROPOSED RECLAMATION AREA: 1.0± ACRES
INTERIM RECLAMATION DISTURBANCE: 0.2± ACRES



DRG RIFFIN & ASSOCIATES, INC. (307) 362-5028 1414 ELK ST., ROCK SPRINGS, WY 82901	
DRAWN: 6/29/22 - EMB	SCALE: 1" = 50'
REVISED: 2/15/23 - DWB	DRG JOB No. 22224
UPDATE RIG & PRODUCTION	304c(16) RECLAMATION

INTERIM RECLAMATION
BNL (ENTERPRISE) INC.
JACKSON 27 SWSE 3054
SWSE, SECTION 27, T. 30 S., R. 54 W., 6th P.M.,
LAS ANIMAS COUNTY, COLORADO