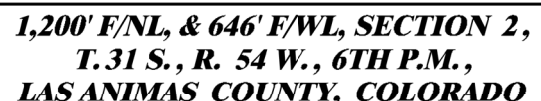


BNL (ENTERPRISE) INC.
JACKSON 02 L4 3154
LOT 4, SECTION 2, T31S, R54W, 6th PM
REVISED DATE: 4/5/24 - JMB

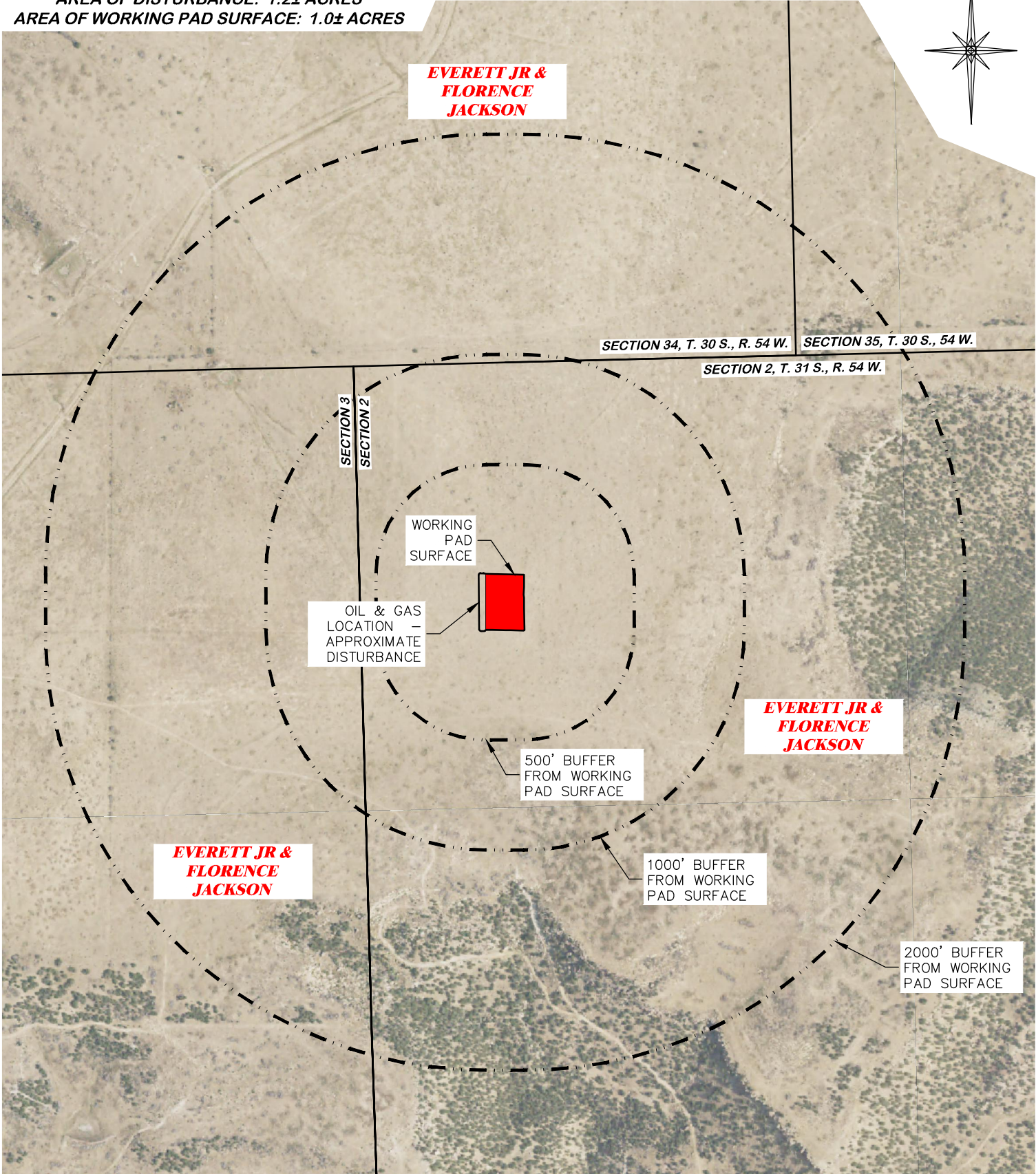
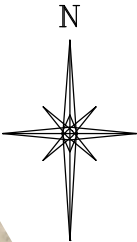
DISTANCE FROM WORKING PAD SURFACE <u>304b(3)A</u>																		
	BUILDING		RESIDENTIAL BUILDING UNIT		HIGH OCCUPANCY BUILDING UNIT		SCHOOL FACILITY		DOAA		PUBLIC ROAD		ABOVE GROUND UTLITY		RAILROAD		PROPERTY LINE	
	DIRECTION	LENGTH	DIRECTION	LENGTH	DIRECTION	LENGTH	DIRECTION	LENGTH	DIRECTION	LENGTH	DIRECTION	LENGTH	DIRECTION	LENGTH	DIRECTION	LENGTH	DIRECTION	LENGTH
WPS	NW	5280'	NW	5280'	N	5280'	N	5280'	N	5280'	W	5280'	NW	5280'	NW	5280'	SW	4850'
					DISTANCE FROM WORKING PAD SURFACE - DISPROPORTIONATELY IMPACTED COMMUNITY													
							RESIDENTIAL BUILDING UNIT		HIGH OCCUPANCY BUILDING UNIT		SCHOOL FACILITY							
					WPS		DIRECTION	LENGTH	DIRECTION	LENGTH	DIRECTION	LENGTH	DIRECTION	LENGTH				
							-	0'	-	0'	-	0'	-	0'				

CULTURAL FEATURE INFORMATION <u>304b(3)B</u>			
CULTURAL FEATURE	0-500 FEET		501 - 1,000 FEET
	NUMBER		NUMBER
BUILDING UNIT	0		0
RESIDENTIAL BUILDING UNIT	0		0
HIGH OCCUPANCY BUILDING UNIT	0		0
SCHOOL PROPERTIES	0		0
SCHOOL FACILITIES	0		0
DESIGNATED OUTDOOR ACTIVITY AREA	0		0
SCHOOL WITHIN DISPROPORTIONALLY IMPACTED COMMUNITY	0		0

DISTANCE FROM WELL HEAD																		
WELL NAME	BUILDING		RESIDENTIAL BUILDING		HIGH OCCUPANCY		SCHOOL FACILITY		DOAA		PUBLIC ROAD		ABOVE GROUND UTLITY		RAILROAD		PROPERTY LINE	
	DIRECTION	LENGTH	DIRECTION	LENGTH	DIRECTION	LENGTH	DIRECTION	LENGTH	DIRECTION	LENGTH	DIRECTION	LENGTH	DIRECTION	LENGTH	DIRECTION	LENGTH	DIRECTION	LENGTH
JACKSON 02 L4 3154	NW	5280'	NW	5280'	N	5280'	N	5280'	N	5280'	W	5280'	NW	5280'	NW	5280'	SW	4998'



UNGRADED ELEVATION: 5612.1'
FINAL ELEVATION: 5611.3'
AREA OF DISTURBANCE: 1.2± ACRES
AREA OF WORKING PAD SURFACE: 1.0± ACRES




CULTURAL ITEMS:	
MEASURED FROM NEAREST EDGE OF THE PROPOSED WORKING PAD SURFACE	
BUILDING	5280'+ NW
RESIDENTIAL BUILDING	5280'+ NW
HIGH OCCUPANCY BUILDING	5280'+ N
DOAA	5280'+ N
PUBLIC ROAD	5280'+ W
ABOVE GROUND UTILITY	5280'+ NW
RAILROAD	5280'+ NW
PROPERTY LINE	4850' SW
SCHOOL FACILITY	5280'+ N
SCHOOL PROPERTY LINE	5280'+ N
CHILDCARE FACILITY	5280'+ N
CHILDCARE PROPERTY LINE	5280'+ N
DI COMMUNITY	0'

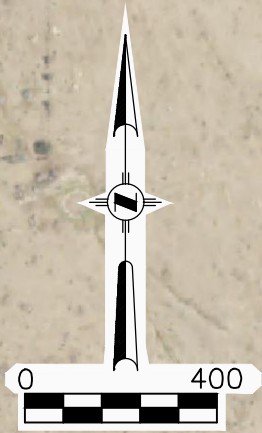
CULTURAL FEATURE INFORMATION			
PRODUCTION FEATURE	0-500 FEET	501 - 1,000 FEET	1,001 - 2,000 FEET
	NUMBER	NUMBER	NUMBER
BUILDING	0	0	0
RESIDENTIAL BUILDING	0	0	0
HIGH OCCUPANCY BUILDING	0	0	0
SCHOOL PROPERTIES	0	0	0
SCHOOL FACILITIES	0	0	0
DOAA	0	0	0



JACKSON 02 L4 3154

 (307) 362-5028 1414 ELK ST., ROCK SPRINGS, WY 82901	
DRAWN: 8/8/2022 - DWB	SCALE: 1" = 600'
REVISED: 4/5/24 - JMB	DRG JOB No. 22267
UPDATED TABLE	304b(3)C CULTURAL

CULTURAL DISTANCES DRAWING
CULTURAL DISTANCES BNL (ENTERPRISE) INC. JACKSON 02 L4 3154 LOT 4, SECTION 2, T.31 S., R. 54 W., 6th P.M., LAS ANIMAS COUNTY, COLORADO



VIEW NORTH

VIEW WEST

VIEW EAST


VIEW SOUTH

AERIAL PHOTO SOURCE
AERIAL PHOTOGRAMMETRY
TAKEN FROM BING IMAGES

PAD LOCATION:

LAT: N 37.377597
LONG: W 103.443727

JACKSON 02 L4 3154

 (307) 362-5028 1414 ELK ST., ROCK SPRINGS, WY 82901		AERIAL LOCATION PHOTO	
		BNL (ENTERPRISE) INC. JACKSON 02 L4 3154 LOT 4, SECTION 2, T. 31 S., R. 54 W., 6th P.M., LAS ANIMAS COUNTY, COLORADO	
DRAWN: 8/8/2022 - DWB	SCALE: NONE		
REVISED: 2/14/23 - DWB	DRG JOB No. 22267		
UPDATE LAYOUTS	304b(4) LOC PIC - SHEET 1 OF 3		




WELL LOCATION LOOKING NORTH
7/26/22



WELL LOCATION LOOKING EAST
7/26/22

JACKSON 02 L4 3154

<div>  <div> DRG RIFFIN & ASSOCIATES, INC. <small>(307) 362-5028 1414 ELK ST., ROCK SPRINGS, WY 82901</small> </div> </div>		LOCATION PICTURES	
DRAWN: 8/8/2022 - DWB	SCALE: NONE	BNL (ENTERPRISE) INC. JACKSON 02 L4 3154 LOT 4, SECTION 2, T.31 S., R. 54 W., 6th P.M., LAS ANIMAS COUNTY, COLORADO	
REVISED: 2/14/23 - DWB	DRG JOB No. 22267		
UPDATE LAYOUTS	304b(4) LOC PIC - SHEET 2 OF 3		




WELL LOCATION LOOKING SOUTH
7/26/22



WELL LOCATION LOOKING WEST
7/26/22

JACKSON 02 L4 3154

<div>  DRG RIFFIN & ASSOCIATES, INC. <small>(307) 362-5028 1414 ELK ST., ROCK SPRINGS, WY 82901</small> </div>		LOCATION PICTURES
DRAWN: 8/8/2022 - DWB	SCALE: NONE	BNL (ENTERPRISE) INC. JACKSON 02 L4 3154 LOT 4, SECTION 2, T.31 S., R. 54 W., 6th P.M., LAS ANIMAS COUNTY, COLORADO
REVISED: 2/14/23 - DWB	DRG JOB No. 22267	
UPDATE LAYOUTS	304b(4) LOC PIC - SHEET 3 OF 3	

UNGRADED ELEVATION: 5612.1'
FINAL ELEVATION: 5611.3'
AREA OF DISTURBANCE: 1.2± ACRES
AREA OF WORKING PAD SURFACE: 1.0± ACRES

JACKSON 02 L4 3154

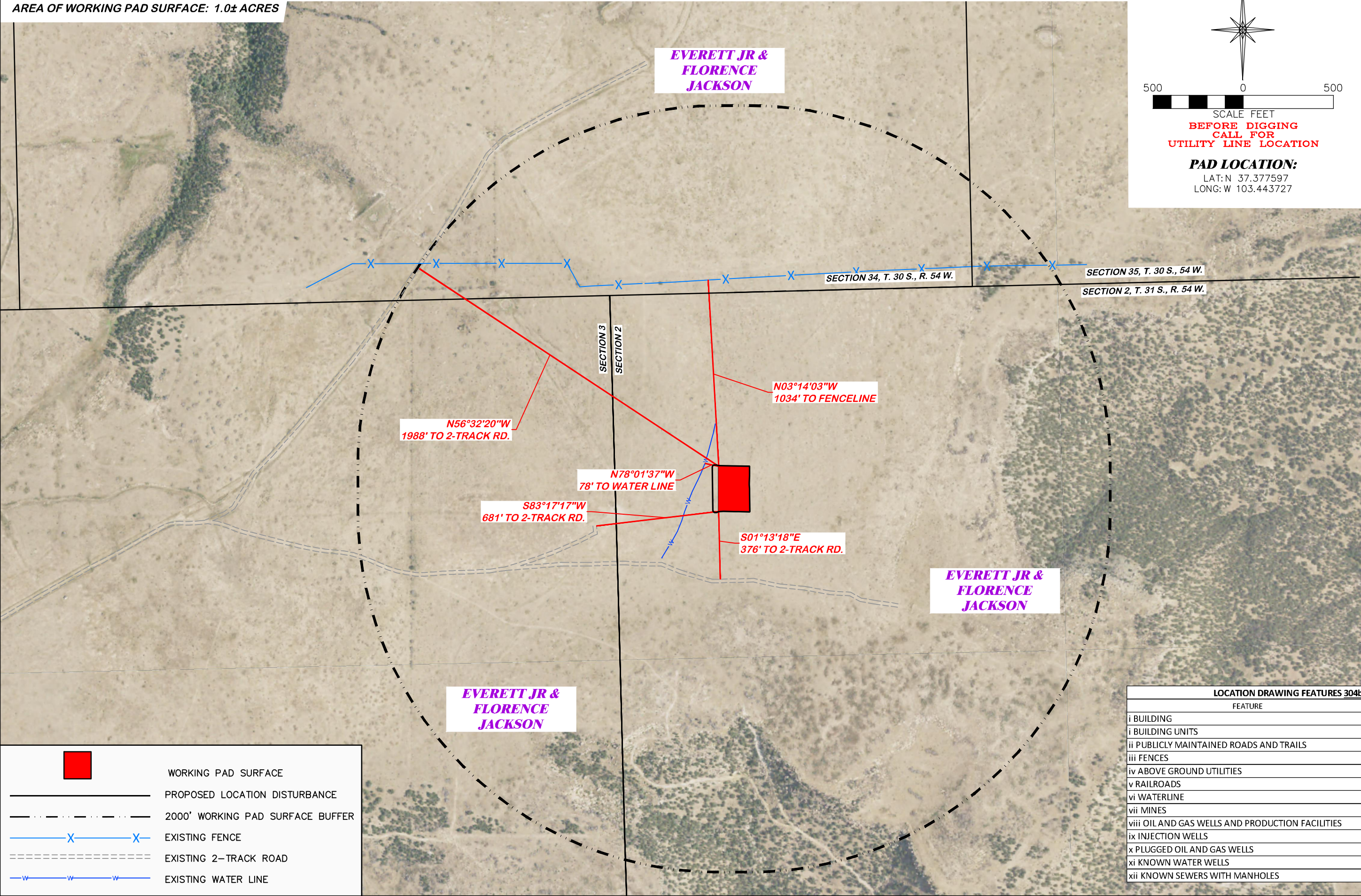
N

5000500

SCALE FEET

BEFORE DIGGING
CALL FOR
UTILITY LINE LOCATION

PAD LOCATION:
LAT: N 37.377597
LONG: W 103.443727



LOCATION DRAWING

BNL (ENTERPRISE) INC.
JACKSON 02 L4 3154
LOT 4, SECTION 2, T. 31 S., R. 54 W., 6th P.M.,
LAS ANIMAS COUNTY, COLORADO

DRG RIFFIN & ASSOCIATES, INC.
1414 ELK ST., ROCK SPRINGS, WY 82901
(307) 362-5028

DRAWN: 8/8/2022 - DWB

REVISD: 4/5/24 - JMB

UPDATED TABLE

SCALE: 1" = 500'

DRG JOB No. 22267

304b(7)A LOC AERIAL

LOCATION DRAWING FEATURES 304b(7)A	
FEATURE	DISTANCE
i BUILDING	5280'+ NW
i BUILDING UNITS	5280'+ NW
ii PUBLICLY MAINTAINED ROADS AND TRAILS	5280'+ W
iii FENCES	1034' NW
iv ABOVE GROUND UTILITIES	5280'+ NW
v RAILROADS	5280'+ NW
vi WATERLINE	78' NW
vii MINES	5280'+ W
viii OIL AND GAS WELLS AND PRODUCTION FACILITIES	5280'+ N
ix INJECTION WELLS	5280'+ W
x PLUGGED OIL AND GAS WELLS	5280'+ E
xi KNOWN WATER WELLS	4829' SE
xii KNOWN SEWERS WITH MANHOLES	5280'+ N

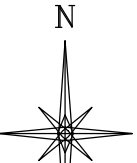
UNGRADED ELEVATION: 5612.1'
FINAL ELEVATION: 5611.3'
AREA OF DISTURBANCE: 1.2± ACRES
AREA OF WORKING PAD SURFACE: 1.0± ACRES

JACKSON 02 L4 3154

EVERETT JR &
FLORENCE
JACKSON

EVERETT JR &
FLORENCE
JACKSON

EVERETT JR &
FLORENCE
JACKSON



BEFORE DIGGING
CALL FOR
UTILITY LINE LOCATION

PAD LOCATION:

LAT: N 37.377597
LONG: W 103.443727

SECTION 34, T. 30 S., R. 54 W. SECTION 35, T. 30 S., 54 W.
SECTION 2, T. 31 S., R. 54 W.

N56°32'20"W
1988' TO 2-TRACK RD.

N03°14'03"W
1034' TO FENCELINE

N78°01'37"W
78' TO WATER LINE

S83°17'17"W
681' TO 2-TRACK RD.

S01°13'18"E
376' TO 2-TRACK RD.

- WORKING PAD SURFACE
- PROPOSED LOCATION DISTURBANCE
- 2000' WORKING PAD SURFACE BUFFER
- EXISTING FENCE
- EXISTING 2-TRACK ROAD
- EXISTING WATER LINE

LOCATION DRAWING

BNL (ENTERPRISE) INC.
JACKSON 02 L4 3154
LOT 4, SECTION 2, T. 31 S., R. 54 W., 6th P.M.,
LAS ANIMAS COUNTY, COLORADO

DRG RIFFIN & ASSOCIATES, INC.
1414 ELK ST., ROCK SPRINGS, WY 82901
(307) 362-5028

DRAWN: 8/8/2022 - DWB

REVISD: 4/5/24 - JMB

304b(7)A LOC DWG

SCALE: 1" = 500'

DRG JOB No. 22267

UPDATED TABLE

LOCATION DRAWING FEATURES 304b(7)A	
FEATURE	DISTANCE
i BUILDING	5280'+ NW
i BUILDING UNITS	5280'+ NW
ii PUBLICLY MAINTAINED ROADS AND TRAILS	5280'+ W
iii FENCES	1034' NW
iv ABOVE GROUND UTILITIES	5280'+ NW
v RAILROADS	5280'+ NW
vi WATERLINE	78' NW
vii MINES	5280'+ W
viii OIL AND GAS WELLS AND PRODUCTION FACILITIES	5280'+ N
ix INJECTION WELLS	5280'+ W
x PLUGGED OIL AND GAS WELLS	5280'+ E
xi KNOWN WATER WELLS	4829' SE
xii KNOWN SEWERS WITH MANHOLES	5280'+ N

UNGRADED ELEVATION: 5612.1'
FINAL ELEVATION: 5611.3'
AREA OF DISTURBANCE: 1.2± ACRES
AREA OF WORKING PAD SURFACE: 1.0± ACRES

JACKSON 02 L4 3154

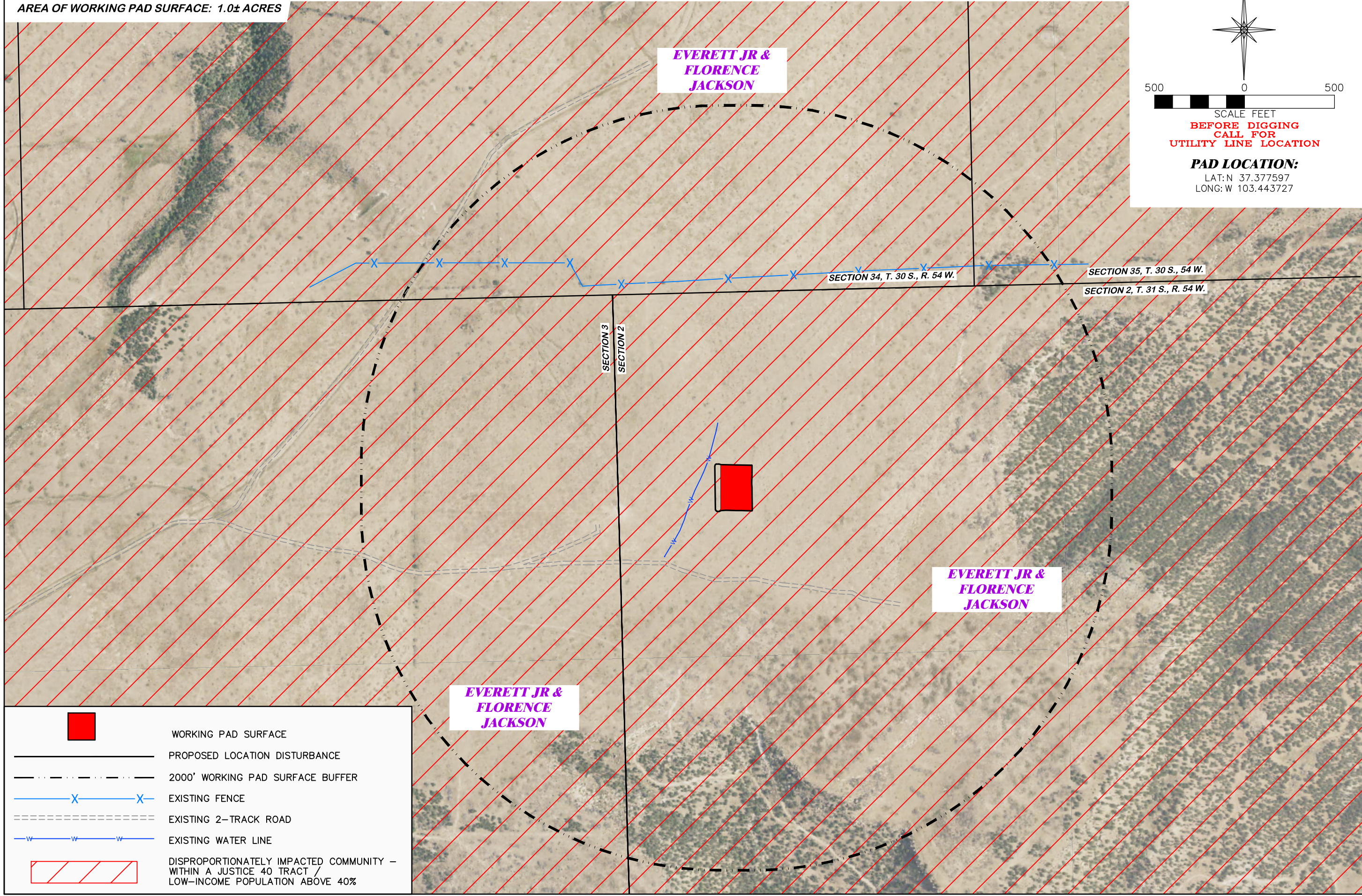
N

5000500

SCALE FEET

BEFORE DIGGING
CALL FOR
UTILITY LINE LOCATION

PAD LOCATION:
LAT: N 37.377597
LONG: W 103.443727



WORKING PAD SURFACE

PROPOSED LOCATION DISTURBANCE

2000' WORKING PAD SURFACE BUFFER

EXISTING FENCE

EXISTING 2-TRACK ROAD

EXISTING WATER LINE

DISPROPORTIONATELY IMPACTED COMMUNITY –
WITHIN A JUSTICE 40 TRACT /
LOW-INCOME POPULATION ABOVE 40%

DISPROPORTIONATELY IMPACTED COMMUNITIES MAP

RIFFIN & ASSOCIATES, INC.
1414 ELK ST., ROCK SPRINGS, WY 82901
(307) 362-5028

DRAWN: 8/8/2022 - DWB

REVISIED: 4/5/24 - JMB

ADDED MAP

SCALE: 1" = 500'

DRG JOB No. 22267

304b(7)J DIC MAP

BNL (ENTERPRISE) INC.
JACKSON 02 L4 3154
LOT 4, SECTION 2, T. 31 S., R. 54 W., 6th P.M.,
LAS ANIMAS COUNTY, COLORADO

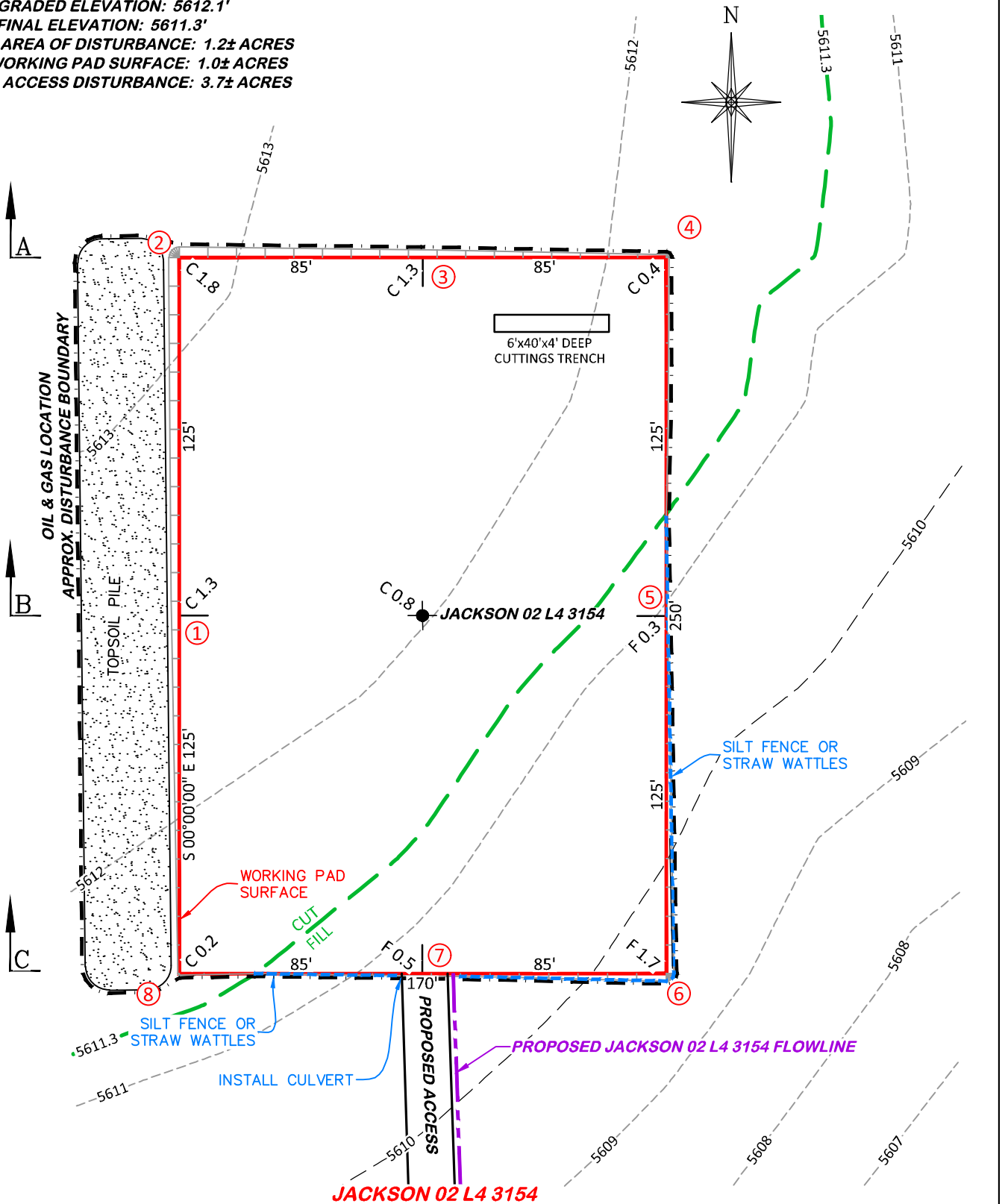
UNGRADED ELEVATION: 5612.1'

FINAL ELEVATION: 5611.3'

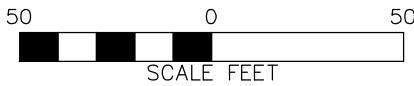
PROPOSED AREA OF DISTURBANCE: 1.2± ACRES

AREA OF WORKING PAD SURFACE: 1.0± ACRES

PROPOSED ACCESS DISTURBANCE: 3.7± ACRES



NOTE: THE EARTH QUANTITIES ON THIS DRAWING ARE ESTIMATED AND THE USE OF SAID QUANTITIES IS AT THE RESPONSIBILITY OF THE USER.



RIFFIN & ASSOCIATES, INC.

(307) 362-5028

1414 ELK ST., ROCK SPRINGS, WY 82901

CONSTRUCTION LAYOUT DRAWING 1 OF 5

PLAN

BNL (ENTERPRISE) INC.

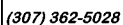
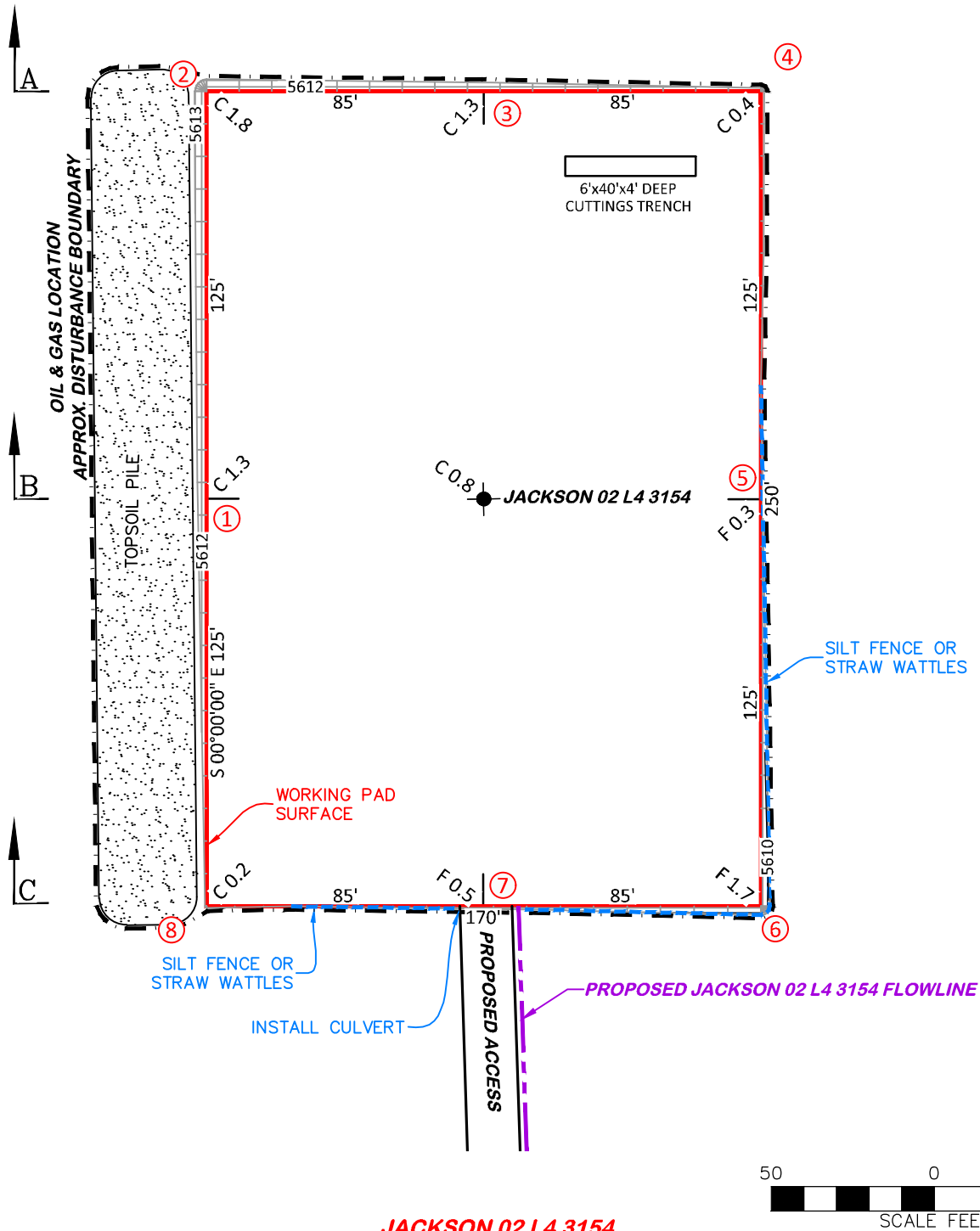
JACKSON 02 L4 3154

**LOT 4, SECTION 2, T.31 S., R. 54 W., 6th P.M.,
LAS ANIMAS COUNTY, COLORADO**

ESTIMATED EARTHWORK

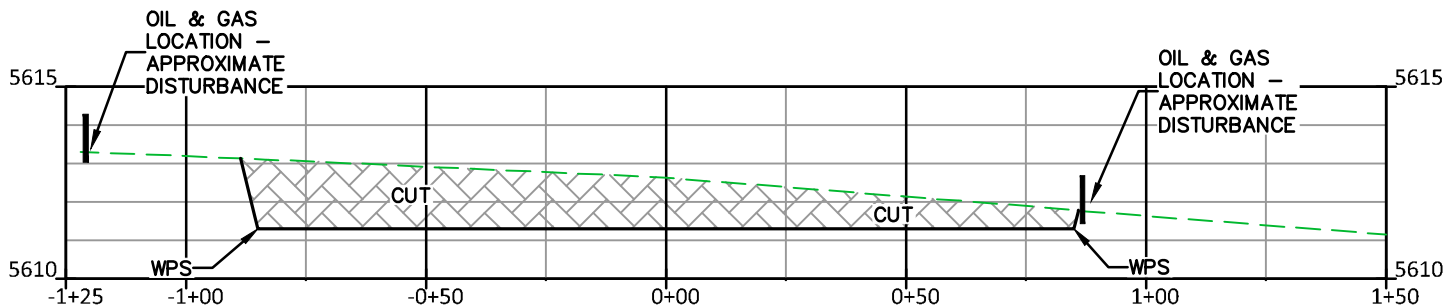
	ITEM	CUT	FILL	TOPSOIL	EXCESS
DRAWN: 8/8/2022 - DWB	PAD	1,039 CY	213 CY	814 CY	12 CY
REVISED: 2-14-23 - DWB	PIT	NONE			NONE
UPDATE RIG & PRODUCTION	TOTALS	1,039 CY	213 CY	814 CY	12 CY

FINAL ELEVATION: 5611.3'

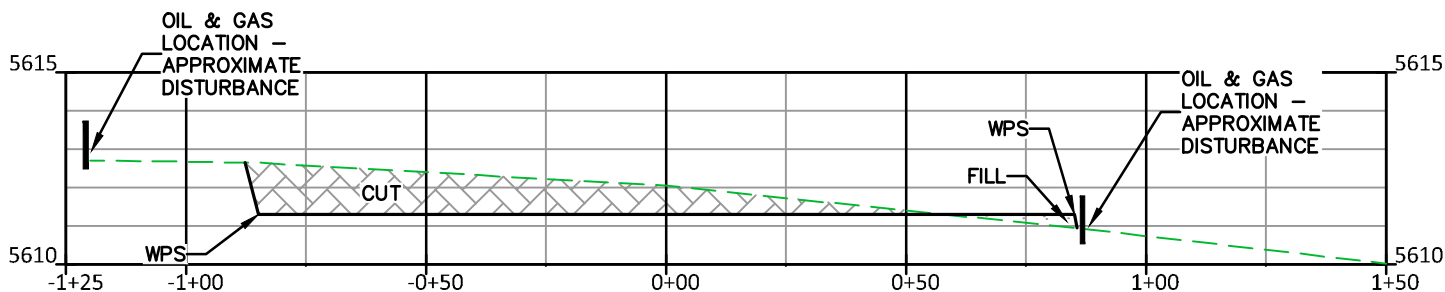


304b(7)Bi DSGN CONT

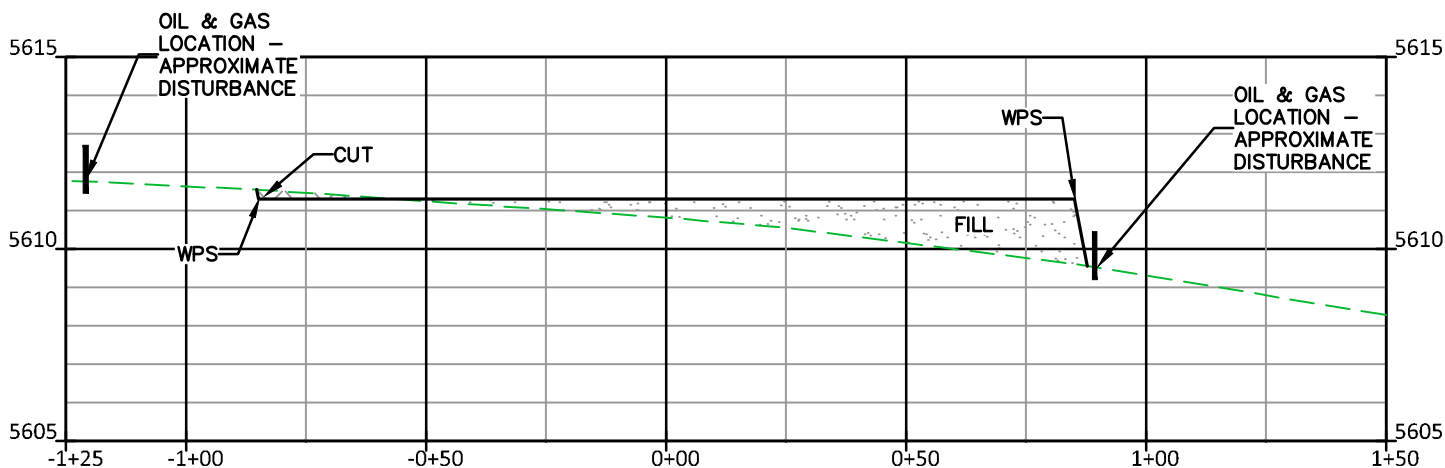
**LOT 4, SECTION 2, T.31 S., R. 54 W., 6th P.M.,
LAS ANIMAS COUNTY, COLORADO**



A



B



C

CUT SLOPES - 2:1

FILL SLOPES - 1.5:1

JACKSON 02 L4 3154



RIFFIN & ASSOCIATES, INC.

(307) 362-5028

1414 ELK ST., ROCK SPRINGS, WY 82901

DRAWN: 8/8/2022 - DWB

SCALE: H - 1" = 40' V - 1" = 5'

REVISED: NA

DRG JOB No. 22267

304b(7)Bi XSEC

CONSTRUCTION LAYOUT DRAWING 2 OF 5

**CONSTRUCTION LAYOUT DRAWING
CROSS-SECTIONS**

BNL (ENTERPRISE) INC.

JACKSON 02 L4 3154

**LOT 4, SECTION 2, T.31 S., R. 54 W., 6th P.M.,
LAS ANIMAS COUNTY, COLORADO**

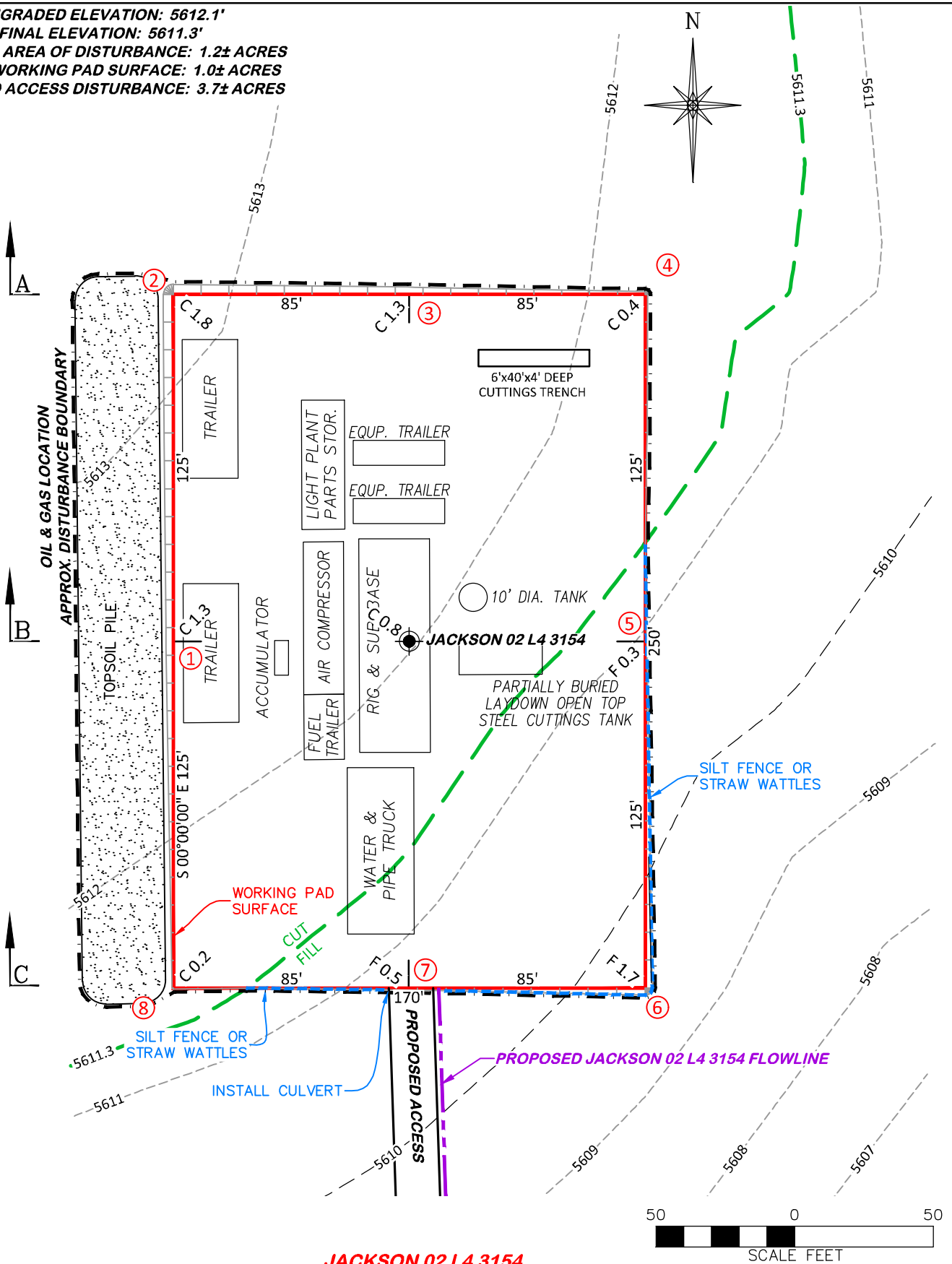
UNGRADED ELEVATION: 5612.1'

FINAL ELEVATION: 5611.3'

PROPOSED AREA OF DISTURBANCE: 1.2± ACRES

AREA OF WORKING PAD SURFACE: 1.0± ACRES

PROPOSED ACCESS DISTURBANCE: 3.7± ACRES



DRG RIFFIN & ASSOCIATES, INC.

(307) 362-5028

1414 ELK ST., ROCK SPRINGS, WY 82901

DRAWN: 8/8/2022 - DWB

SCALE: 1" = 50'

REVISED: 2-14-23 - DWB

DRG JOB No. 22267

UPDATE RIG & PRODUCTION

304b(7)Bii RIG

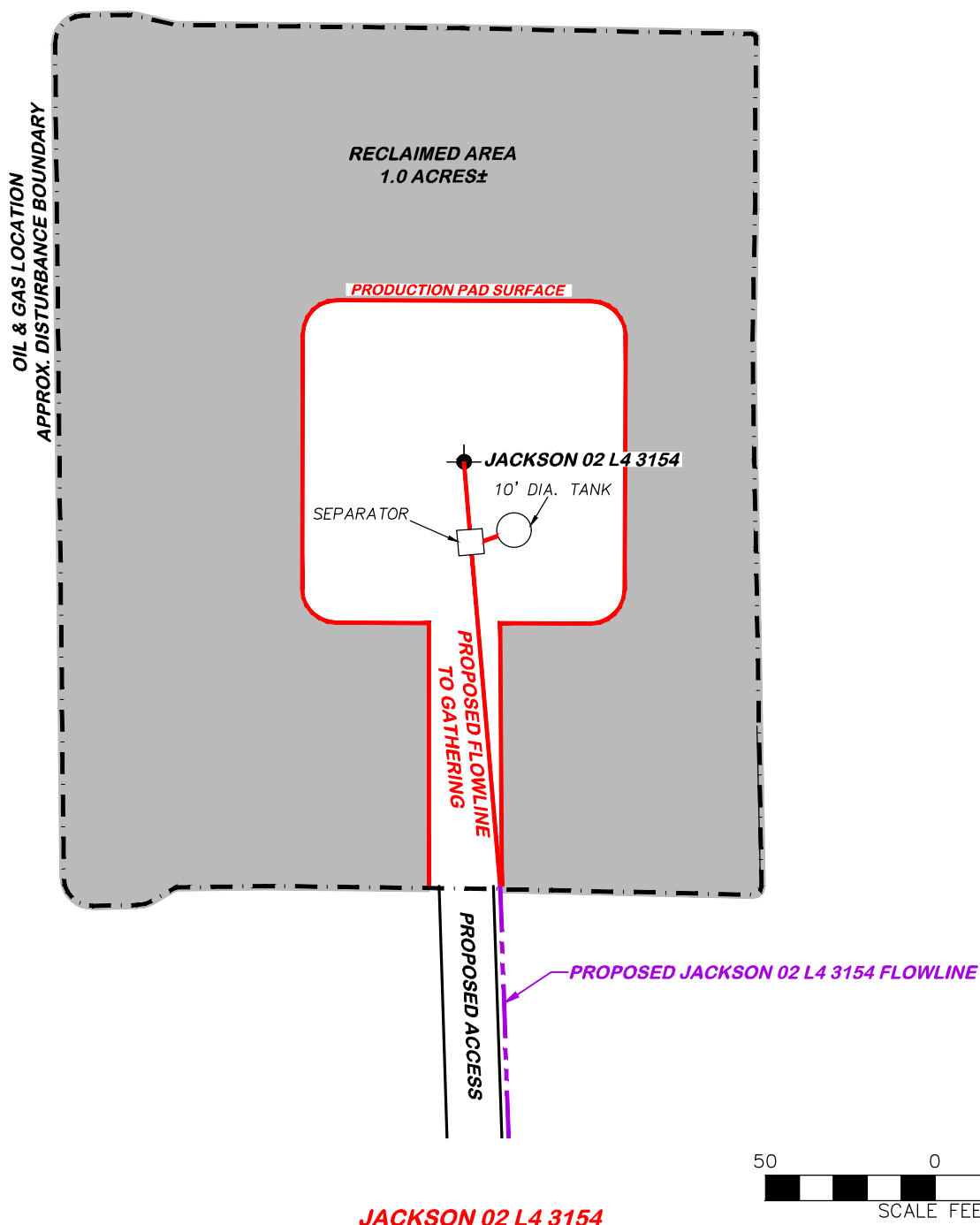
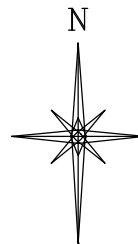
CONSTRUCTION LAYOUT DRAWING 4 OF 5

**PRELIMINARY RIG LAYOUT DRAWING
BNL (ENTERPRISE) INC.**

JACKSON 02 L4 3154

**LOT 4, SECTION 2, T.31 S., R. 54 W., 6th P.M.,
LAS ANIMAS COUNTY, COLORADO**

APPROXIMATE DISTURBANCE AREA 1.2± ACRES
PROPOSED RECLAMATION AREA: 1.0± ACRES
INTERIM RECLAMATION DISTURBANCE: 0.2± ACRES



JACKSON 02 L4 3154

50 0 50
SCALE FEET



RIFFIN & ASSOCIATES, INC.

(307) 362-5028

1414 ELK ST., ROCK SPRINGS, WY 82901

DRAWN: 8/8/2022 - DWB

SCALE: 1" = 50'

REVISED: 2-14-23 - DWB

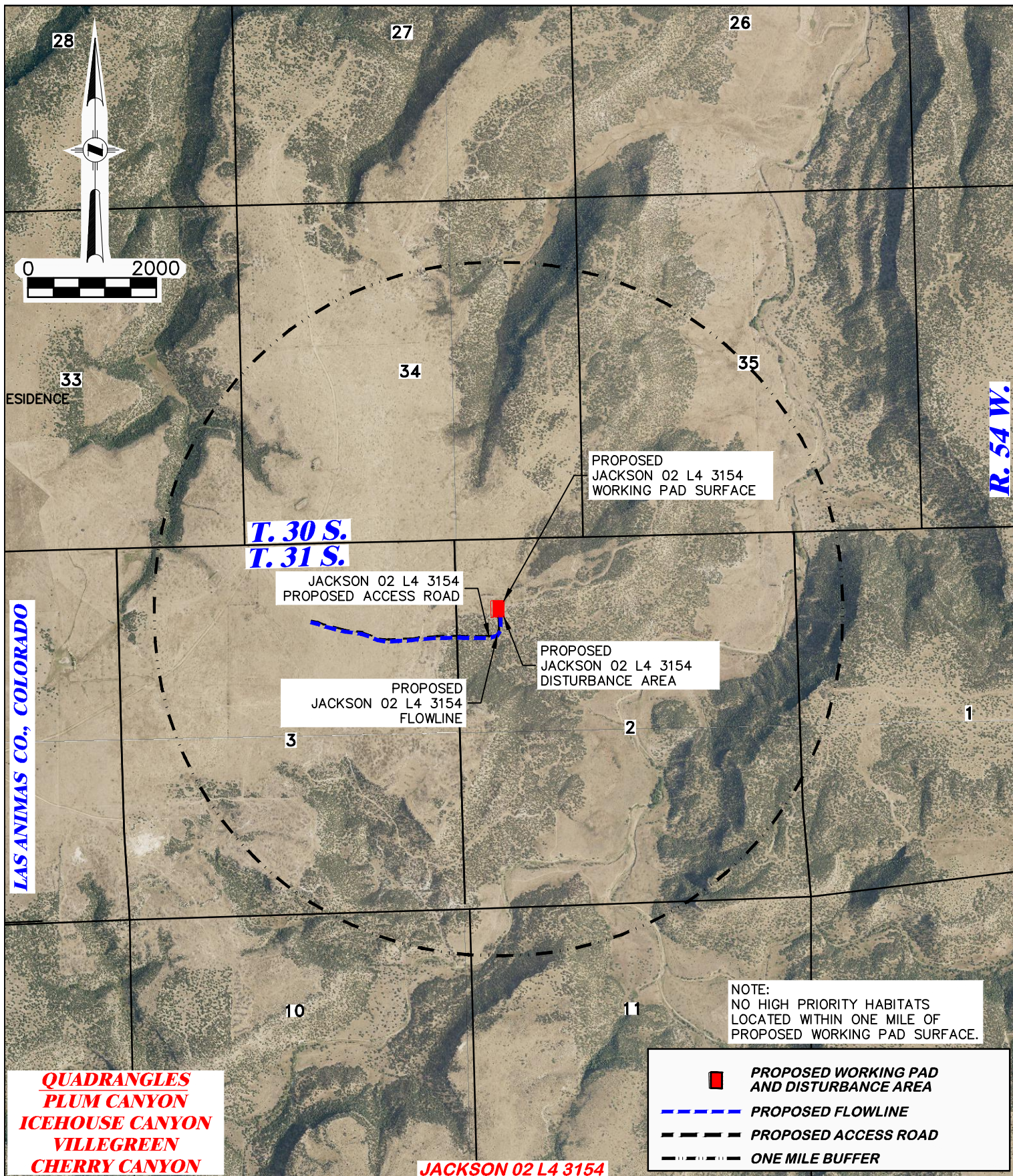
DRG JOB No. 22267

UPDATE RIG & PRODUCTION

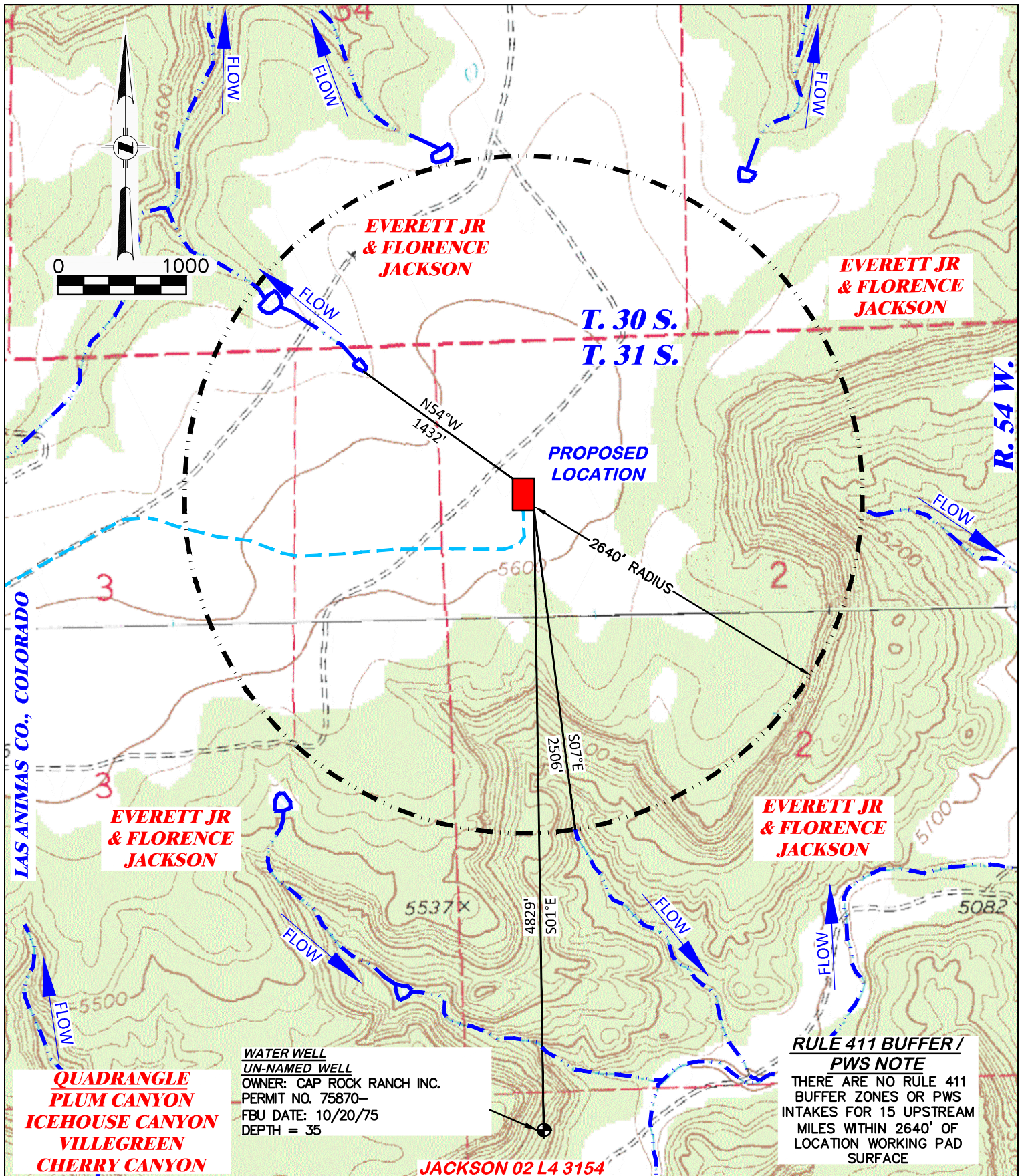
304b(7)Bv FACILITY

CONSTRUCTION LAYOUT DRAWING 5 OF 5

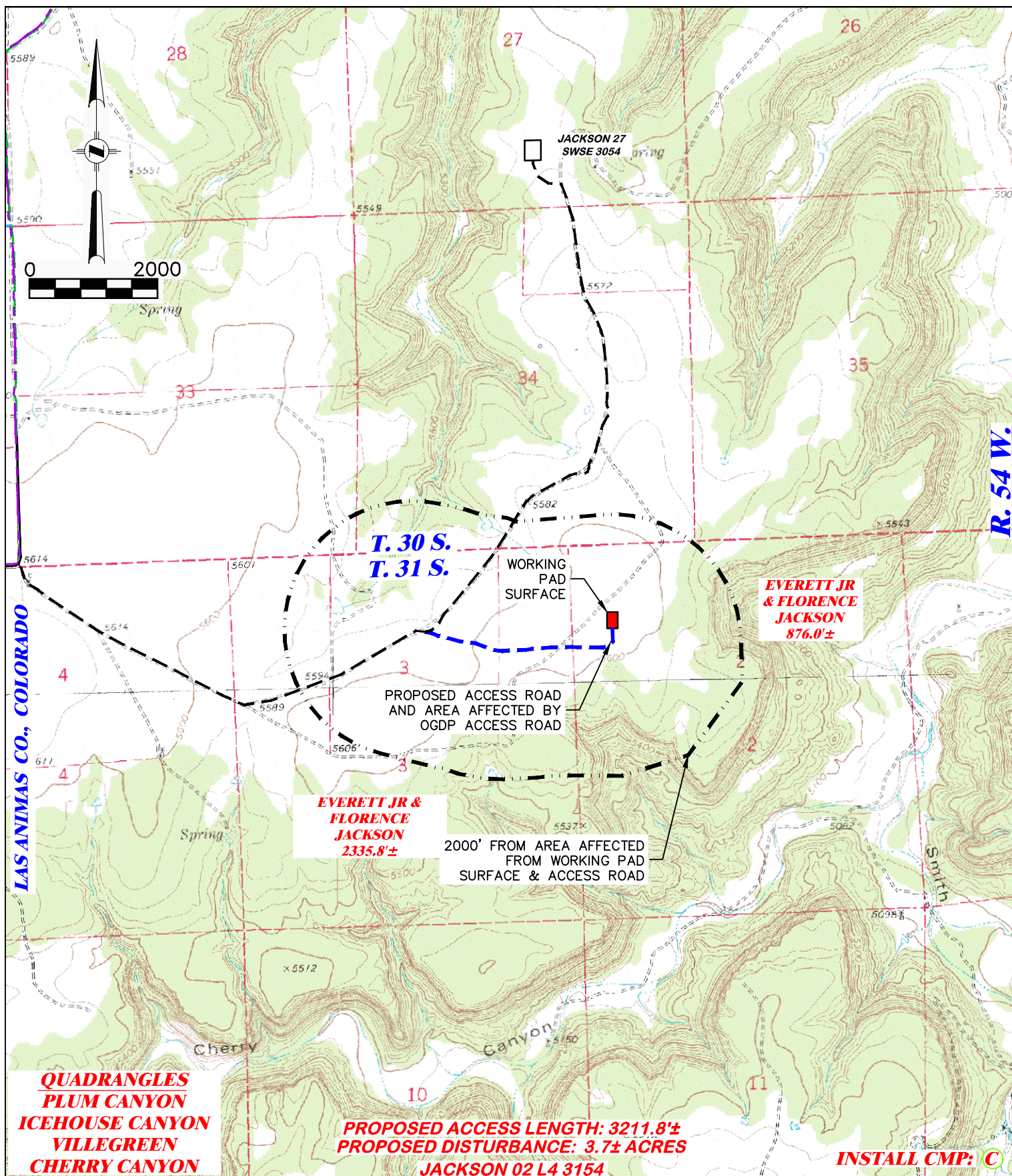
**FACILITY LAYOUT DRAWING
BNL (ENTERPRISE) INC.
JACKSON 02 L4 3154
LOT 4, SECTION 2, T.31 S., R. 54 W., 6th P.M.,
LAS ANIMAS COUNTY, COLORADO**






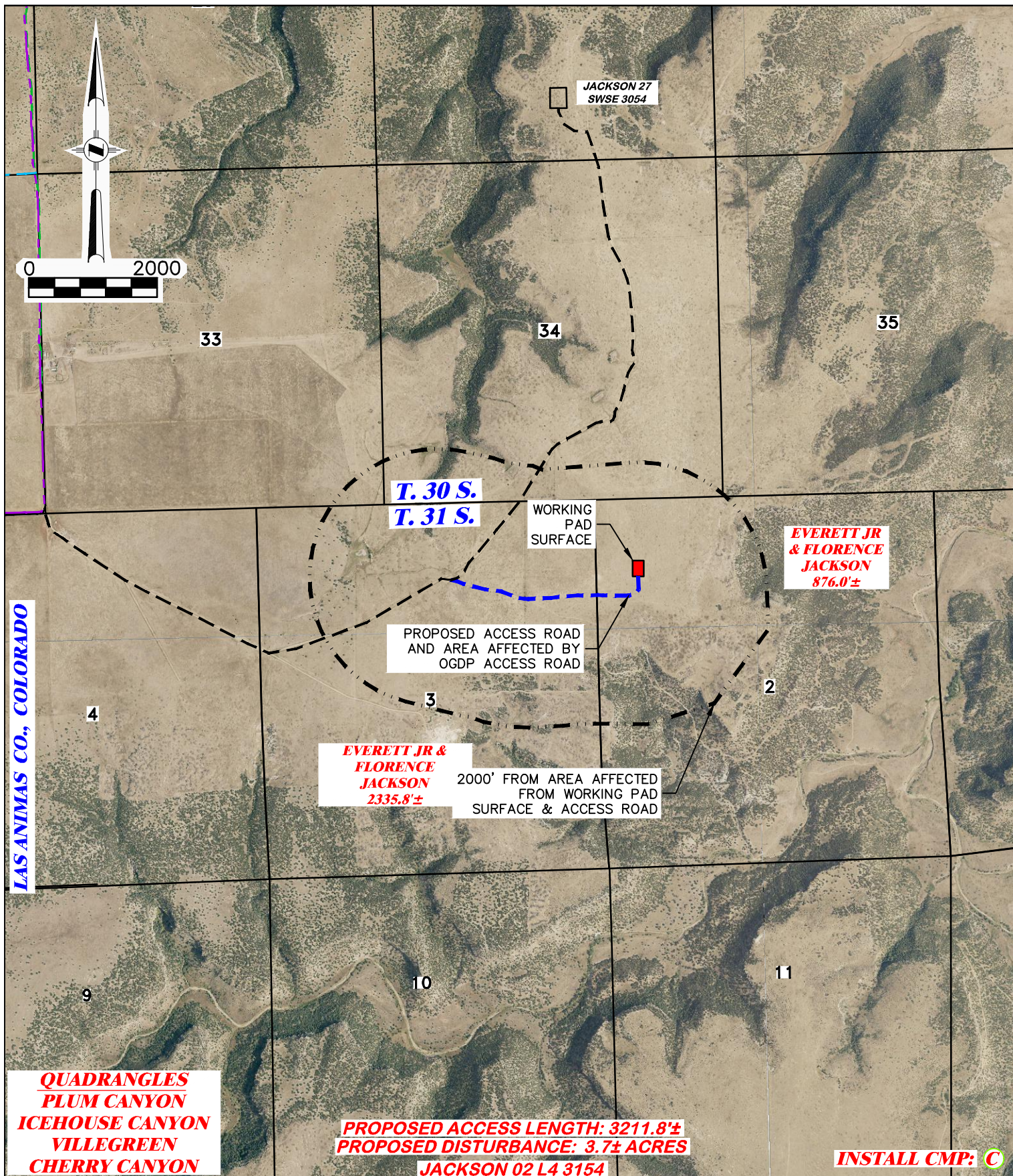
DRG RIFFIN & ASSOCIATES, INC. (307) 362-5028 1414 ELK ST., ROCK SPRINGS, WY 82901		WILDLIFE HABITAT DRAWING	
DRAWN: 8/8/2022 - DWB	SCALE: 1" = 2000'	BNL (ENTERPRISE) INC. JACKSON 02 L4 3154 LOT 4, SECTION 2, T. 31 S., R. 54 W., 6th P.M., LAS ANIMAS COUNTY, COLORADO	
REVISED: NA	DRG JOB No. 22267		
	304b(7)C WILDLIFE		






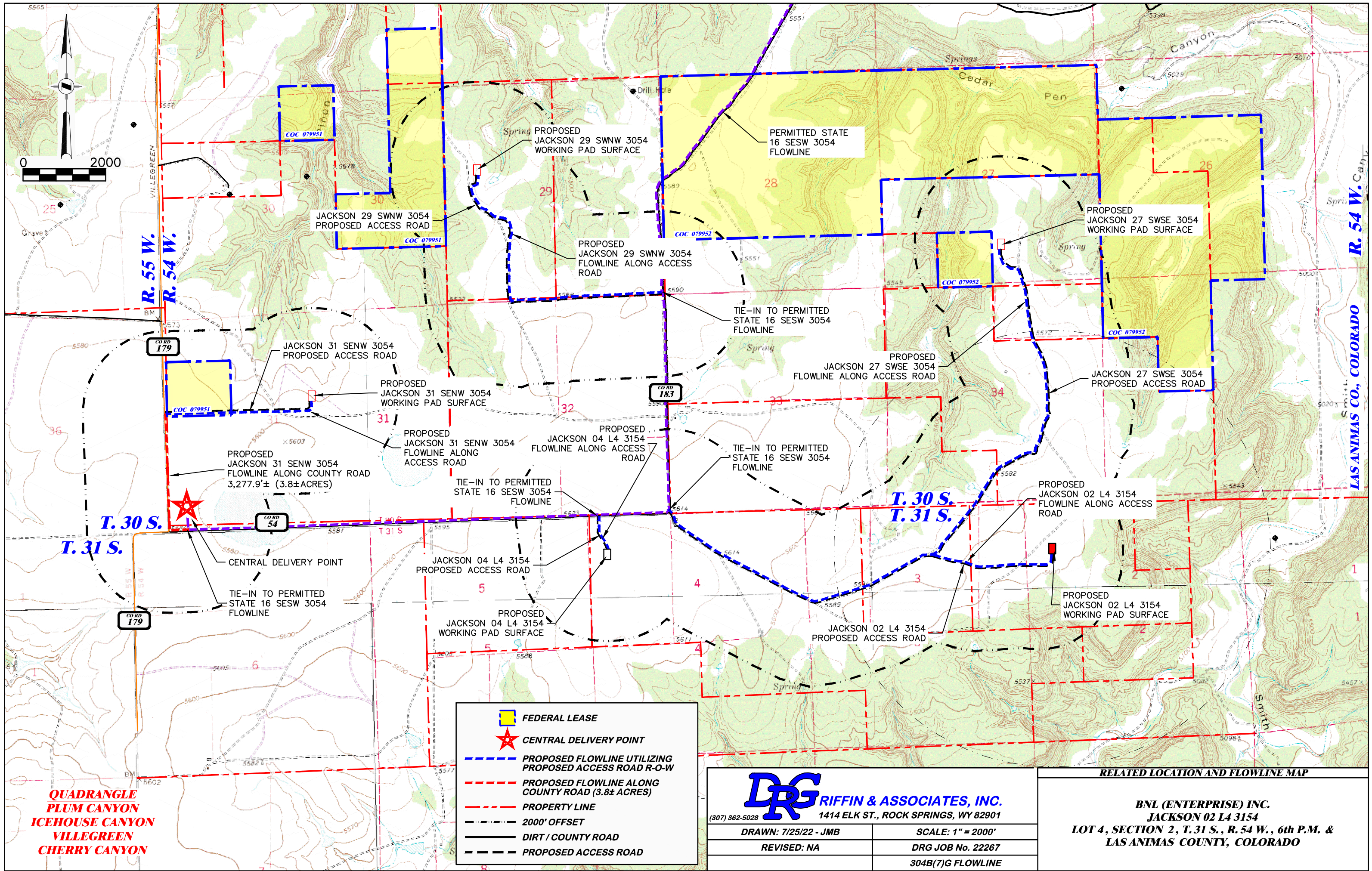
DRG RIFFIN & ASSOCIATES, INC. (307) 362-5028 1414 ELK ST., ROCK SPRINGS, WY 82901		HYDROLOGY MAP BNL (ENTERPRISE) INC. JACKSON 02 L4 3154 LOT 4, SECTION 2, T. 31 S., R. 54 W., 6th P.M., LAS ANIMAS COUNTY, COLORADO	
DRAWN: 8/8/2022 - DWB	SCALE: 1" = 1000'	HISTORIC SPRING	PERENNIAL FLOW
REVISED: NA	DRG JOB No. 22267	INTERMITTENT FLOW	EXISTING ROAD
304b(7)E HYDRO			



<div>RIFFIN & ASSOCIATES, INC.</div> <div>(307) 362-50281414 ELK ST., ROCK SPRINGS, WY 82901</div>		<div>PROPOSED NEW ACCESS MAP</div> <div>BNL (ENTERPRISE) INC.</div> <div>JACKSON 02 L4 3154</div> <div>LOT 4, SECTION 2, T. 31 S., R. 54 W., 6th P.M.,</div> <div>LAS ANIMAS COUNTY, COLORADO</div>	
DRAWN: 8/8/2022 - DWB	SCALE: 1" = 2000'	<div></div> PROPOSED WORKING PAD SURFACE	<div>PROPOSED ACCESS W/ AFFECTED AREA </div>
REVISED: NA	DRG JOB No. 22267		
304b(7)F ROAD SHEET 1 OF 2			



 DRG RIFFIN & ASSOCIATES, INC. (307) 362-5028 1414 ELK ST., ROCK SPRINGS, WY 82901		PROPOSED NEW ACCESS MAP BNL (ENTERPRISE) INC. JACKSON 02 L4 3154 LOT 4, SECTION 2, T. 31 S., R. 54 W., 6th P.M., LAS ANIMAS COUNTY, COLORADO	
		 PROPOSED WORKING PAD SURFACE	PROPOSED ACCESS W/ AFFECTED AREA 
DRAWN: 8/8/2022 - DWB	SCALE: 1" = 2000'		
REVISED: NA	DRG JOB No. 22267		
304b(7)F ROAD SHEET 2 OF 2			



QUADRANGLE
PLUM CANYON
ICEHOUSE CANYON
VILLEGREEN
CHERRY CANYON

FEDERAL LEASE

CENTRAL DELIVERY POINT

PROPOSED FLOWLINE UTILIZING PROPOSED ACCESS ROAD R-O-W

PROPOSED FLOWLINE ALONG COUNTY ROAD (3.8± ACRES)

PROPERTY LINE

2000' OFFSET

DIRT / COUNTY ROAD

PROPOSED ACCESS ROAD

RIFFIN & ASSOCIATES, INC.

(307) 362-5028

1414 ELK ST., ROCK SPRINGS, WY 82901

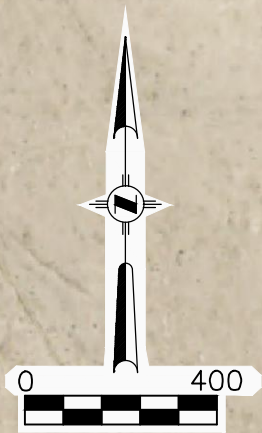
DRAWN: 7/25/22 - JMB	SCALE: 1" = 2000'
REVISED: NA	DRG JOB No. 22267
304B(7)G FLOWLINE	

RELATED LOCATION AND FLOWLINE MAP

BNL (ENTERPRISE) INC.

JACKSON 02 L4 3154

LOT 4, SECTION 2, T.31 S., R. 54 W., 6th P.M. & LAS ANIMAS COUNTY, COLORADO



VIEW NORTH

**PROPOSED
LOCATION
WPS**

VIEW WEST

VIEW EAST

**REFERENCE AREA
CENTER STAKE
(DO NOT DISTURB)
LATITUDE (NAD 83)
NORTH 37.377344 DEG.
LONGITUDE (NAD 83)
WEST 103.442721 DEG.**

VIEW SOUTH

AERIAL PHOTO SOURCE
AERIAL PHOTOGRAMMETRY
TAKEN FROM BING IMAGES

PAD LOCATION:

LAT: N 37.377597
LONG: W 103.443727

JACKSON 02 L4 3154

DRG **RIFFIN & ASSOCIATES, INC.**
(307) 362-5028 1414 ELK ST., ROCK SPRINGS, WY 82901

DRAWN: 8/8/2022 - DWB

SCALE: NONE

REVISED: 2/14/23 - DWB

DRG JOB No. 22267

UPDATE LAYOUTS

304b(9) REF PIC - SHEET 1 OF 3

REFERENCE AREA PHOTOS

**BNL (ENTERPRISE) INC.
JACKSON 02 L4 3154
LOT 4, SECTION 2, T. 31 S., R. 54 W., 6th P.M.,
LAS ANIMAS COUNTY, COLORADO**




REFERENCE AREA LOOKING NORTH
7/26/22



REFERENCE AREA LOOKING EAST
7/26/22

JACKSON 02 L4 3154

<div><div>DRG RIFFIN & ASSOCIATES, INC. (307) 362-5028 1414 ELK ST., ROCK SPRINGS, WY 82901</div></div>		<div>REFERENCE AREA PHOTOS</div> <div><div>BNL (ENTERPRISE) INC. JACKSON 02 L4 3154 LOT 4, SECTION 2, T.31 S., R. 54 W., 6th P.M., LAS ANIMAS COUNTY, COLORADO</div></div>	
DRAWN: 8/8/2022 - DWB		SCALE: NONE	
REVISED: 2/14/23 - DWB		DRG JOB No. 22267	
UPDATE LAYOUTS		304b(9) REF PIC - SHEET 2 OF 3	




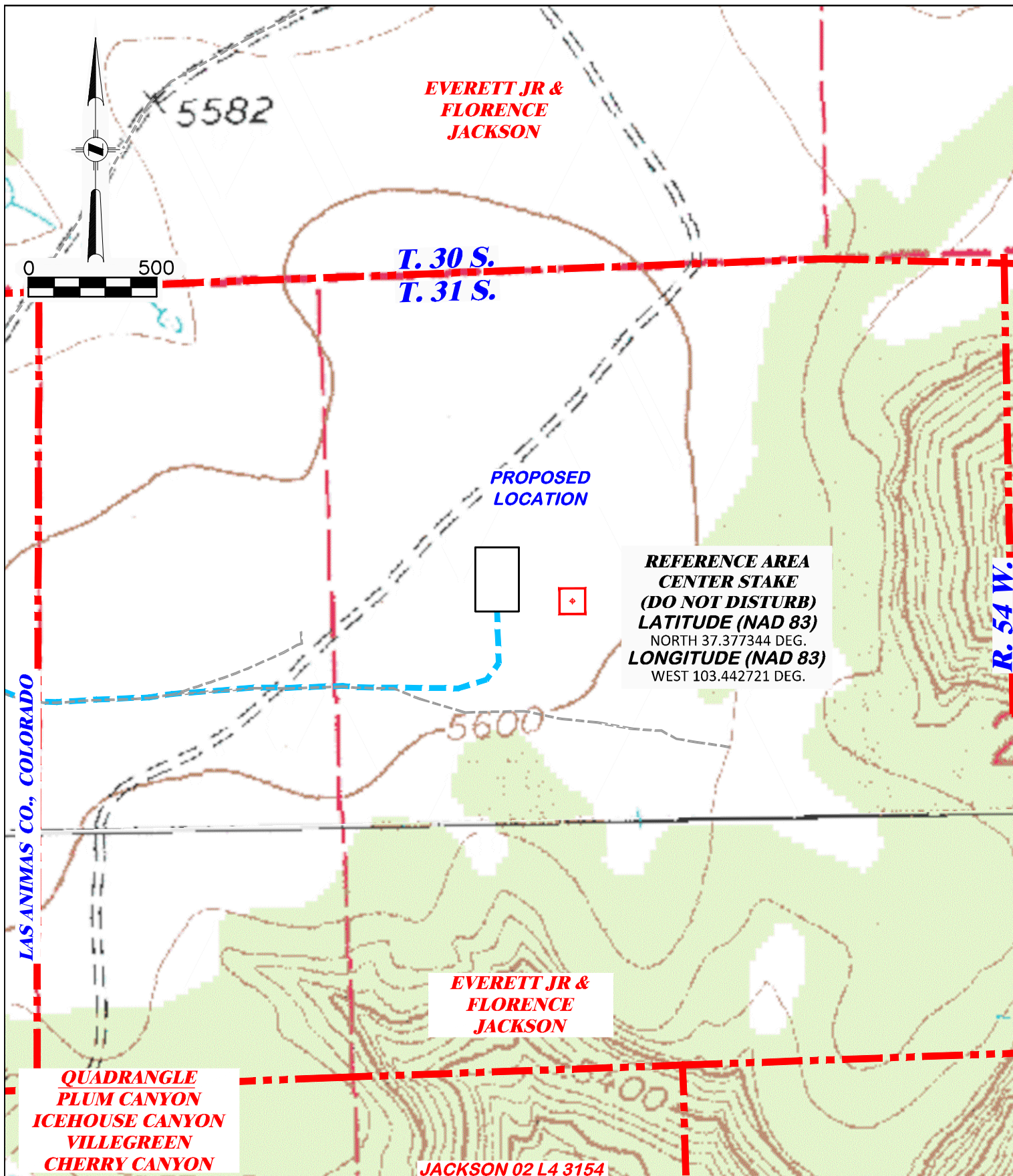
REFERENCE AREA LOOKING SOUTH
7/26/22



REFERENCE AREA LOOKING WEST
7/26/22

JACKSON 02 L4 3154

<div><div>DRG RIFFIN & ASSOCIATES, INC. (307) 362-5028 1414 ELK ST., ROCK SPRINGS, WY 82901</div></div>		<div>REFERENCE AREA PHOTOS</div>
<div><div><div>DRAWN: 8/8/2022 - DWB</div><div>REVISED: 2/14/23 - DWB</div><div>UPDATE LAYOUTS</div></div><div><div>SCALE: NONE</div><div>DRG JOB No. 22267</div><div>304b(9) REF PIC - SHEET 3 OF 3</div></div></div>		<div><div>BNL (ENTERPRISE) INC.</div><div>JACKSON 02 L4 3154</div><div>LOT 4, SECTION 2, T.31 S., R. 54 W., 6th P.M.,</div><div>LAS ANIMAS COUNTY, COLORADO</div></div>



DRG RIFFIN & ASSOCIATES, INC. (307) 362-5028 1414 ELK ST., ROCK SPRINGS, WY 82901		REFERENCE AREA MAP	
DRAWN: 8/8/2022 - DWB		BNL (ENTERPRISE) INC.	
REVISED: NA		JACKSON 02 L4 3154	
SCALE: 1" = 500'		LOT 4, SECTION 2, T. 31 S., R. 54 W., 6th P.M.,	
DRG JOB No. 22267		LAS ANIMAS COUNTY, COLORADO	
304b(9)Bi REF AREA			

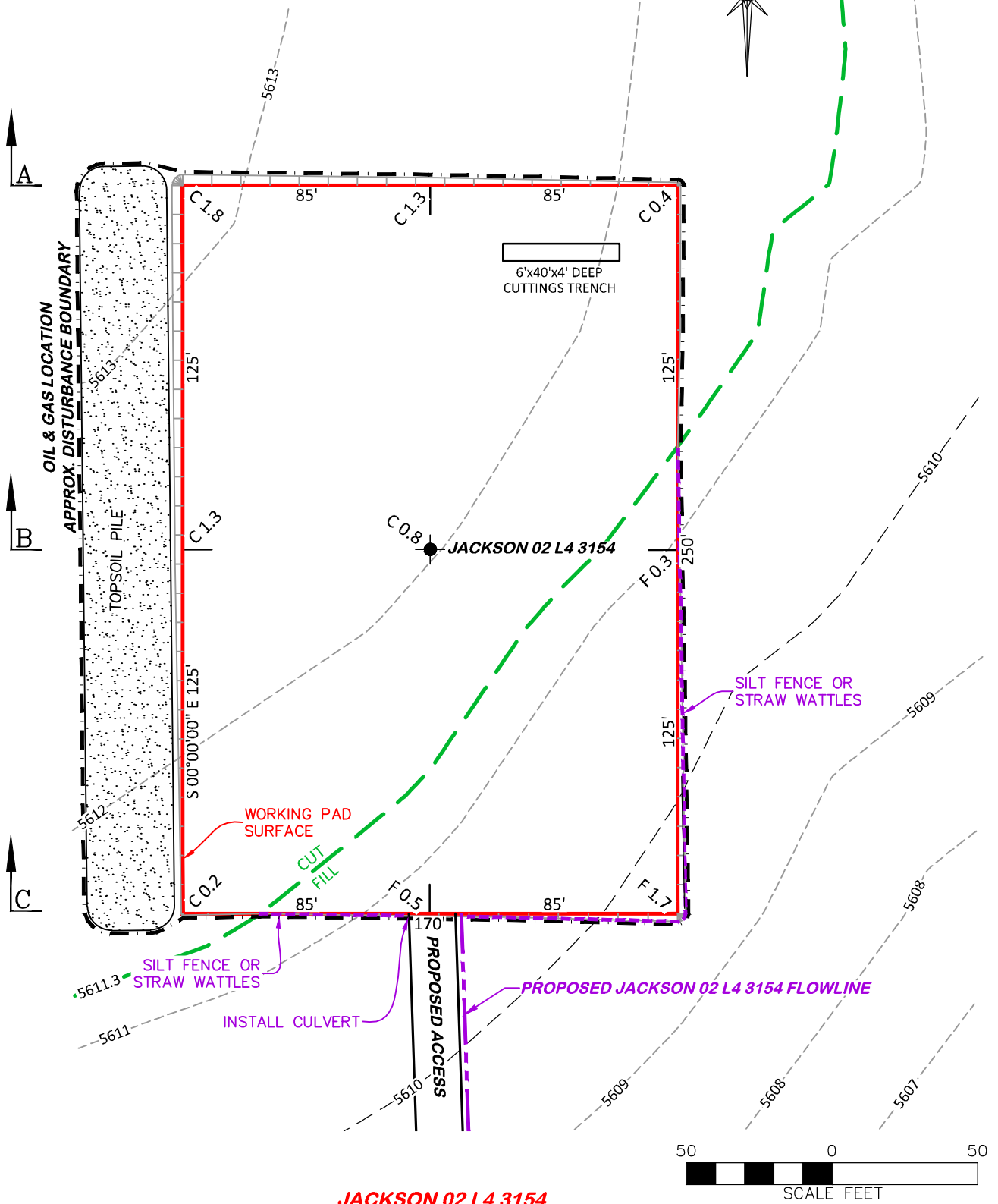
UNGRADED ELEVATION: 5612.1'

FINAL ELEVATION: 5611.3'

PROPOSED AREA OF DISTURBANCE: 1.2± ACRES

AREA OF WORKING PAD SURFACE: 1.0± ACRES

PROPOSED ACCESS DISTURBANCE: 3.7± ACRES



JACKSON 02 L4 3154



RIFFIN & ASSOCIATES, INC.

(307) 362-5028

1414 ELK ST., ROCK SPRINGS, WY 82901

DRAWN: 8/8/2022 - DWB

SCALE: 1" = 50'

REVISED: 2-14-23 - DWB

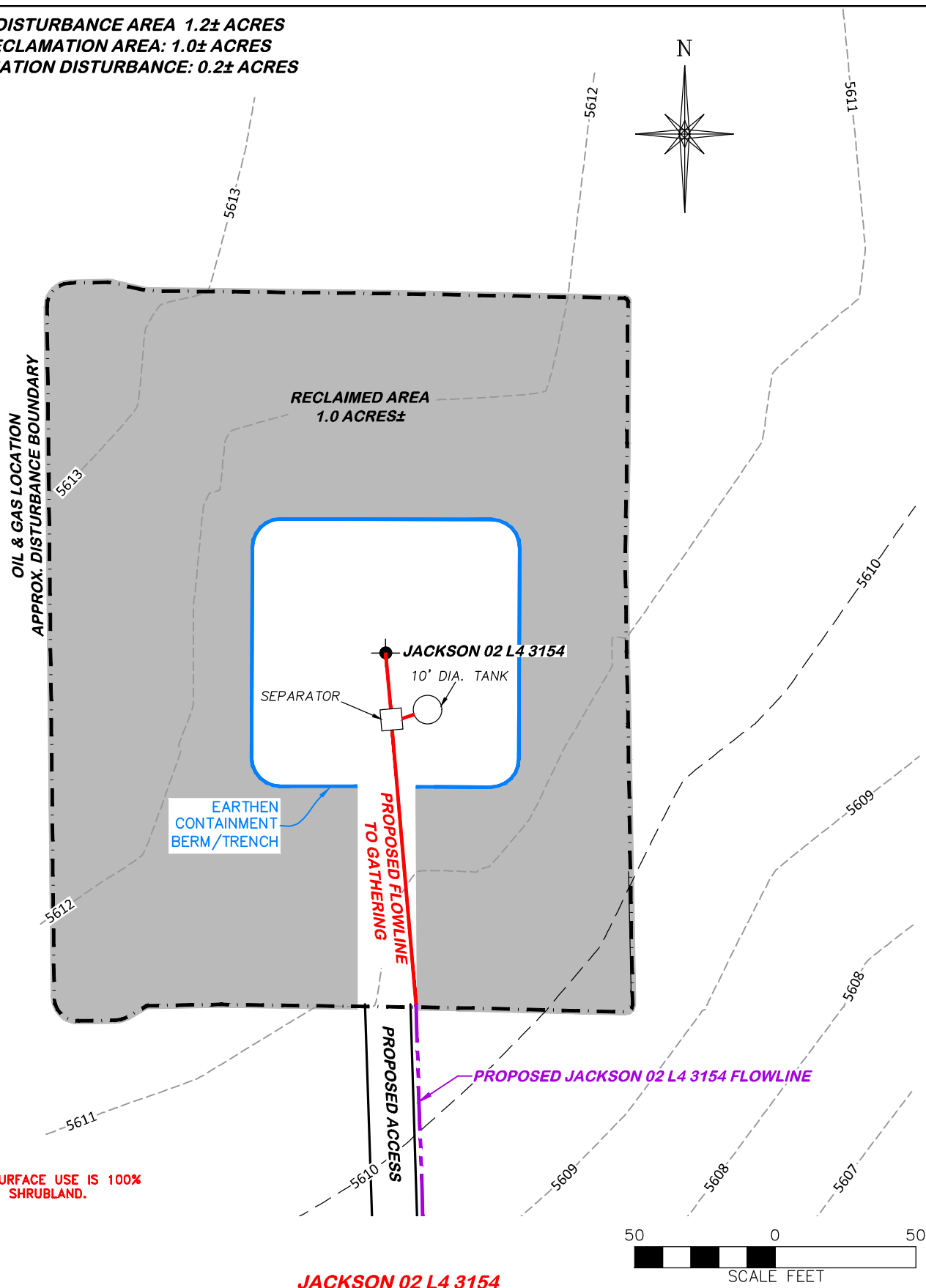
DRG JOB No. 22267

UPDATE RIG & PRODUCTION

304c(15) BMP

STORMWATER AND EROSION CONTROL PLAN
BNL (ENTERPRISE) INC.
JACKSON 02 L4 3154
LOT 4, SECTION 2, T.31 S., R. 54 W., 6th P.M.,
LAS ANIMAS COUNTY, COLORADO

APPROXIMATE DISTURBANCE AREA 1.2± ACRES
PROPOSED RECLAMATION AREA: 1.0± ACRES
INTERIM RECLAMATION DISTURBANCE: 0.2± ACRES



NOTE:
EXISTING SURFACE USE IS 100%
NON-CROP, SHRUBLAND.

JACKSON 02 L4 3154



(307) 362-5028

1414 ELK ST., ROCK SPRINGS, WY 82901

DRAWN: 8/8/2022 - DWB

SCALE: 1" = 50'

REVISED: 2-14-23 - DWB

DRG JOB No. 22267

UPDATE RIG & PRODUCTION

304c(16) RECLAMATION

**INTERIM RECLAMATION
BNL (ENTERPRISE) INC.
JACKSON 02 L4 3154**

**LOT 4, SECTION 2, T.31 S., R. 54 W., 6th P.M.,
LAS ANIMAS COUNTY, COLORADO**