

ECMC Environmental Sampling

by Trevor Lakin on 9/19/2024
for QB Energy Corral Creek 4508

Sample Register Photo Log

Exhibit 1: 20240919-M29 199-(FL-T-BASE)@5




Exhibit 2: 20240919-M29 199-(FL-T-NW)@5



Exhibit 3: 20240919-M29 199-(FL-T-EW)@5




.....
Kleinfelder Representative *Signature*

ECMC Environmental Sampling

by Trevor Lakin on 9/19/2024
for QB Energy Corral Creek 4508

Sample Register Photo Log

Exhibit 4: 20240919-M29 199-(FL-T-SW)@5




Exhibit 5: 20240919-M29 199-(FL-T-WW)@5



Exhibit 6: 20240919-(M29 199 -(FL-T-STOCK)




.....
Kleinfelder Representative *Signature*

ECMC Environmental Sampling

by Trevor Lakin on 9/19/2024
for QB Energy Corral Creek 4508

Sample Register Photo Log

Exhibit 7: 20240919-M29 199-(WH-BASE)@9




Exhibit 8: 20240919-M29 199-(WH-NW)@9



Exhibit 9: 20240919-M29 199-(WH-EW)@9





Kleinfelder Representative *Signature*

ECMC Environmental Sampling

by Trevor Lakin on 9/19/2024
for QB Energy Corral Creek 4508

Sample Register Photo Log

Exhibit 10: 20240919-M29 199-(WH-WW)@9




Exhibit 11: 20240919-M29 199-(WH-SW)@9



Exhibit 12: 20240919-M29 199-(WH-STOCK)





Kleinfelder Representative *Signature*

ECMC Environmental Sampling

by Trevor Lakin on 9/19/2024
for QB Energy Corral Creek 4508

Sample Register Photo Log

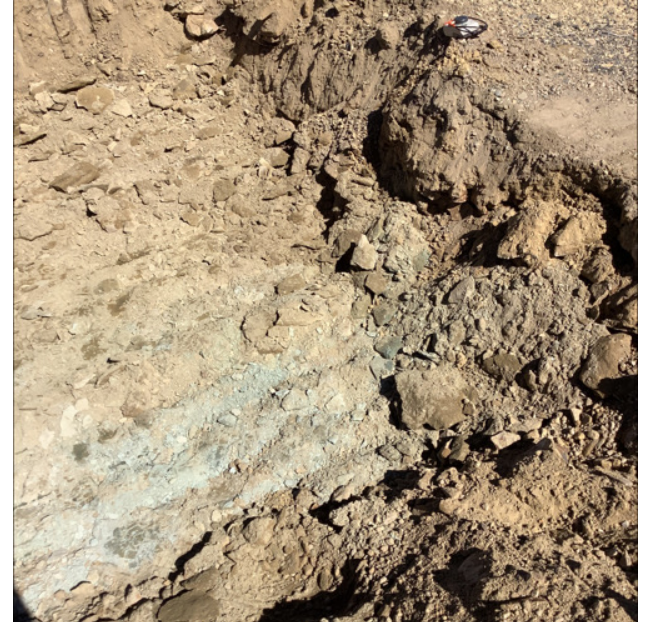
Exhibit 13: 20240919-M29 199-(SEP-BASE)@4




Exhibit 14: 20240919-M29 199-(SEP-NW)@4



Exhibit 15: 20240919-M29 199-(SEP-EW)@4




.....
Kleinfelder Representative *Signature*

ECMC Environmental Sampling

by Trevor Lakin on 9/19/2024
for QB Energy Corral Creek 4508

Sample Register Photo Log

Exhibit 16: 20240919-M29 199-(SEP-SW)@4




Exhibit 17: 20240919-M29 199-(SEP-WW)@4



Exhibit 18: 20240919-M29 199-(SEP-STOCK)





Kleinfelder Representative *Signature*

ECMC Environmental Sampling

by Trevor Lakin on 9/19/2024
for QB Energy Corral Creek 4508

Sample Register Photo Log

Exhibit 19: 20240919-M29 199-(MH-BASE)@4




Exhibit 20: 20240918-M29 199-(MH-NW)@4



Exhibit 21: 20240919-M29 199-(MH-EW)@4





Kleinfelder Representative *Signature*

ECMC Environmental Sampling

by Trevor Lakin on 9/19/2024
for QB Energy Corral Creek 4508

Sample Register Photo Log

Exhibit 22: 20240919-M29 199-(MH-SW)@4




Exhibit 23: 20240919-M29 199-(MH-WW)@4



Exhibit 24: 20240919-M29 199-(MH-STOCK)





Kleinfelder Representative *Signature*

ECMC Environmental Sampling

by Trevor Lakin on 9/19/2024
for QB Energy Corral Creek 4508

Sample Register Photo Log

Exhibit 25: 20240919-M29 199-(T03-BASE)@10




Exhibit 26: 20240919-M29 199-(T03-NW)@10



Exhibit 27: 20240919-M29 199-(T03-EW)@10




.....
Kleinfelder Representative *Signature*

ECMC Environmental Sampling

by Trevor Lakin on 9/19/2024
for QB Energy Corral Creek 4508

Sample Register Photo Log

Exhibit 28: 20240919-M29 199-(T03-SW)@10




Exhibit 29: 20240919-M29 199-(T03-WW)@10



Exhibit 30: 20240919-M29 199-(T03-STOCK)




.....
Kleinfelder Representative *Signature*

ECMC Environmental Sampling

by Trevor Lakin on 9/19/2024
for QB Energy Corral Creek 4508

Photo Log

Photo 1: North




Photo 2: East



Photo 3: South





Kleinfelder Representative *Signature*

ECMC Environmental Sampling

by Trevor Lakin on 9/19/2024
for QB Energy Corral Creek 4508

Photo Log

Photo 4: West




Photo 5: Separator excavation and stockpile



Photo 6: T03 excavation and stockpile





Kleinfelder Representative *Signature*

ECMC Environmental Sampling

by Trevor Lakin on 9/19/2024
for QB Energy Corral Creek 4508

Photo Log

Photo 7: Meter house excavation and stockpile




Photo 8: Wellhead excavation and stockpile

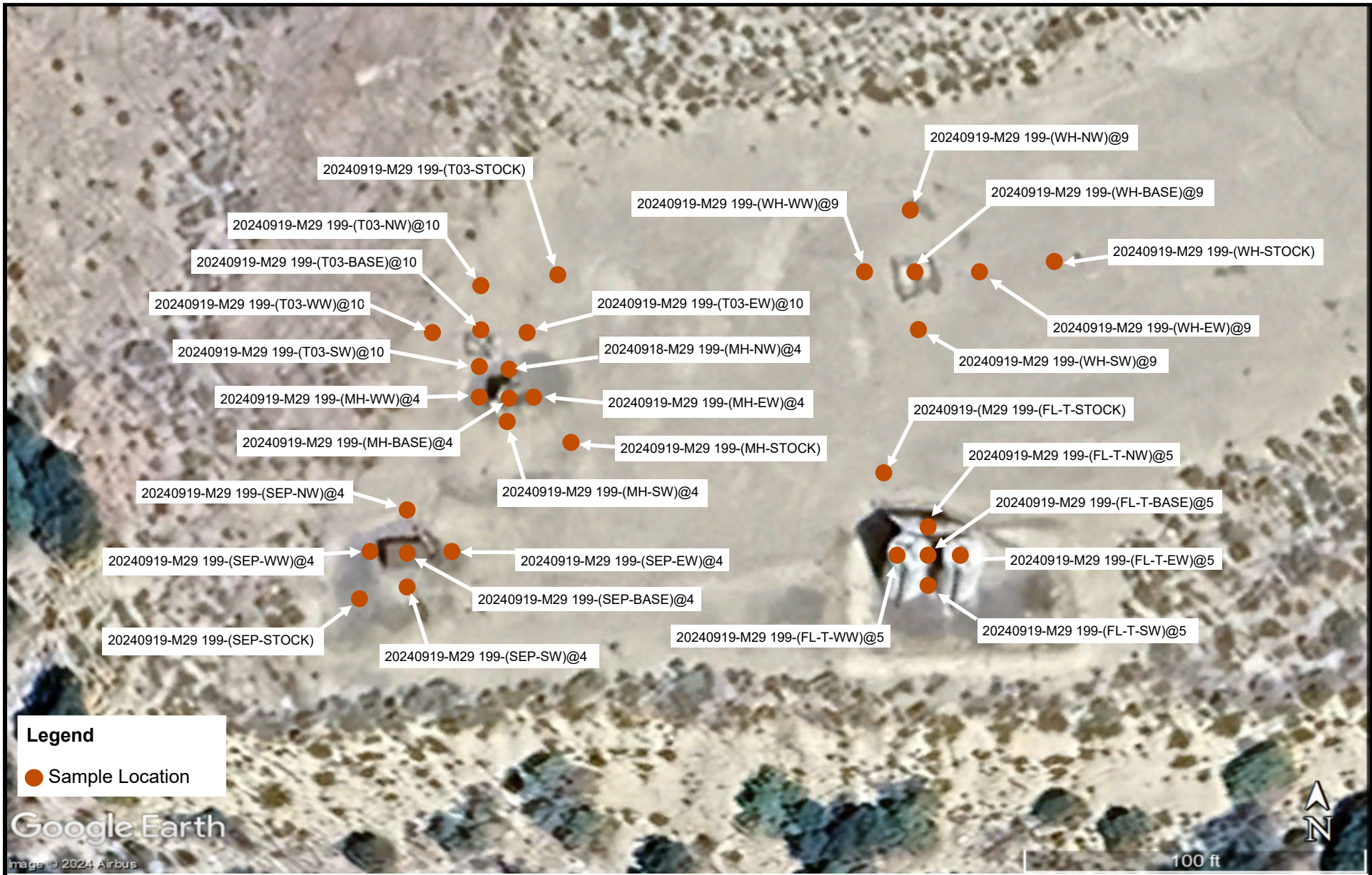


Photo 9: FL-T excavation and stockpile






Kleinfelder Representative *Signature*



Legend
 ● Sample Location

| | | | | |
|-----------------------------------------------------------------------------------------------------------------------------------------------------------------------------------------------------------------------------|-------------|----------------------------------|------------------------------------------------------------------------------------------------------------------------------------------|-------------------------------|
|  <p>KLEINFELDER <i>Bright People. Right Solutions.</i> www.kleinfelder.com</p> | PROJECT NO. | 24005494.001A | Sample Location Map | FIGURE 1 |
| | DRAWN: | 9/26/2024 | | |
| | DRAWN BY: | T. Lakin | | |
| | CHECKED BY: | J. Veith | | |
| | FILE NAME: | Corral Creek 4508 Sample Map.pub | QB Energy Operating, LLC M29 199 (Corral Creek 4508) Facility Decommissioning SWSW Sec. 29 T1S R99W Rio Blanco County, Colorado | |