



|                        |                          |                      |                |
|------------------------|--------------------------|----------------------|----------------|
| Company                |                          | CHEVRON              |                |
| Well                   | BRONCO STATE AF10-64-1HN |                      |                |
| Field                  | WATTENBERG               |                      |                |
| County                 | WELD                     | State                | CO             |
| Location:              |                          | API # : 05-123-36580 | Other Services |
| SEC 10 TWP 5 RGE 62    |                          | Elevation            |                |
| Permanent Datum        | KB                       | Elevation            | 4,646'         |
| Log Measured From      | KB                       | K.B. 4,670'          |                |
| Drilling Measured From | KB                       | D.F. 4,669'          |                |
|                        |                          | G.L. 4,646'          |                |
| Date                   | 6-19-24                  |                      |                |
| Run Number             | ONE                      |                      |                |
| Depth Driller          | 10,705'                  |                      |                |
| Depth Logger           | 2,500'                   |                      |                |
| Bottom Logged Interval | 2,500'                   |                      |                |
| Top Log Interval       | SURFACE                  |                      |                |
| Open Hole Size         | 13 3/4"                  |                      |                |
| Type Fluid             | WATER                    |                      |                |
| Density / Viscosity    | N/A                      |                      |                |
| Max. Recorded Temp.    | N/A                      |                      |                |
| Estimated Cement Top   | N/A                      |                      |                |
| Time Well Ready        | 8:00                     |                      |                |
| Time Logger on Bottom  | 8:35                     |                      |                |
| Equipment Number       | 473                      |                      |                |
| Location               | RIG 12                   |                      |                |
| Recorded By            | ZION DIONNE              |                      |                |
| Witnessed By           | BRANDON TRACY            |                      |                |
| Borehole Record        |                          | Tubing Record        |                |
| Run Number             | Bit                      | From                 | To             |
|                        |                          | Size                 | Weight         |
|                        |                          | From                 | To             |
| Casing Record          | Size                     | Wgt/Ft               | Top            |
| Surface String         | 9 5/8"                   | 36#                  | SURFACE        |
| Prot. String           |                          |                      | 587'           |
| Production String      | 7"                       | 26#                  | SURFACE        |
| Liner                  |                          |                      | 6,727'         |

<<< Fold Here >>>

All interpretations are opinions based on inferences from electrical or other measurements and we cannot and do not guarantee the accuracy or correctness of any interpretation, and we shall not, except in the case of gross or willful negligence on our part, be liable or responsible for any loss, costs, damages, or expenses incurred or sustained by anyone resulting from any interpretation made by any of our officers, agents or employees. These interpretations are also subject to our general terms and conditions set out in our current Price Schedule.

### Comments

LOG RAN PER CUSTOMER REQUEST  
DEPTH REFERENCED TO KB  
ZERO PRESSURE APPLIED

MAIN PASS 2,500' TO SURFACE

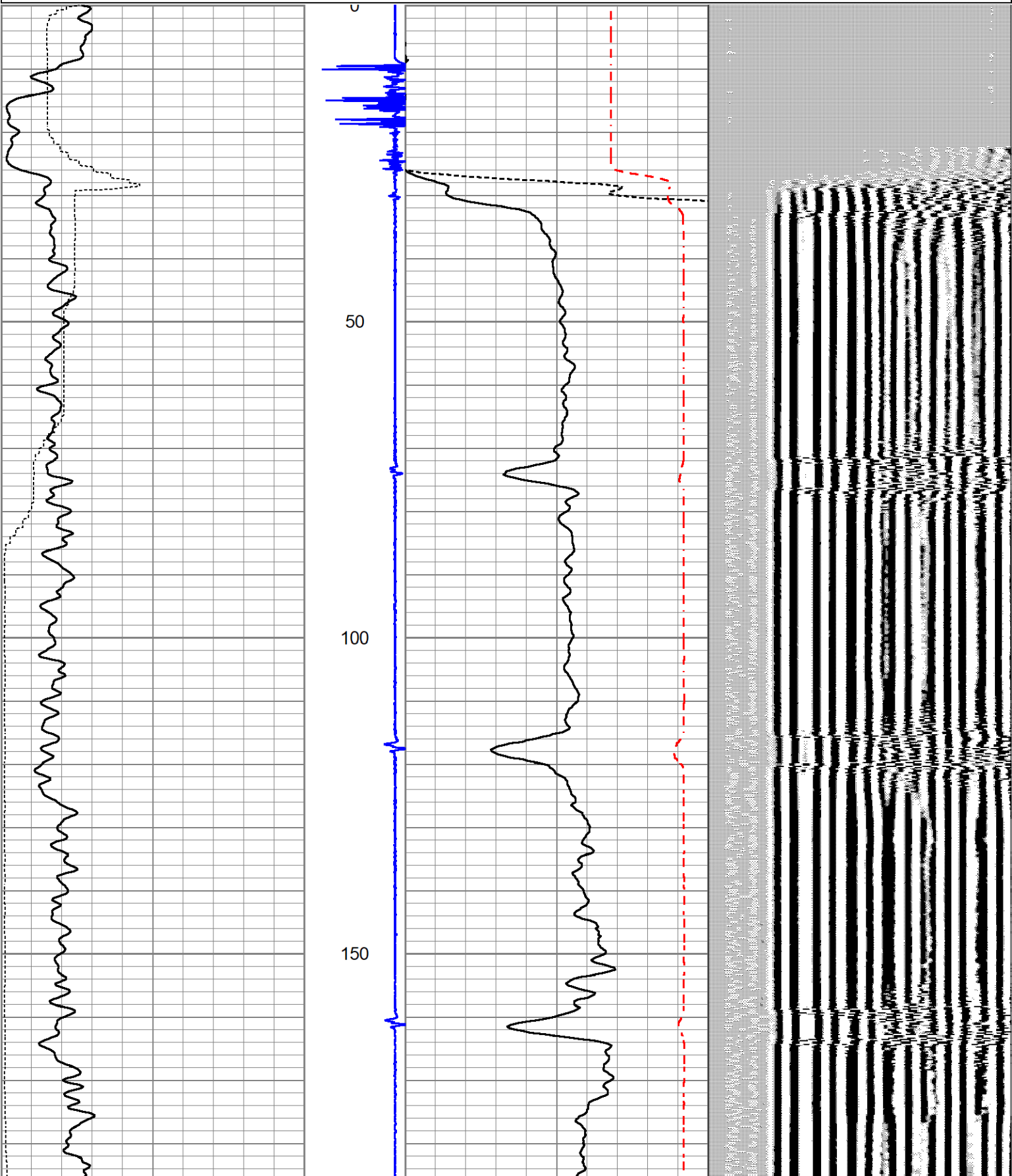
THANK YOU FOR USING A-PLUS P&A LLC

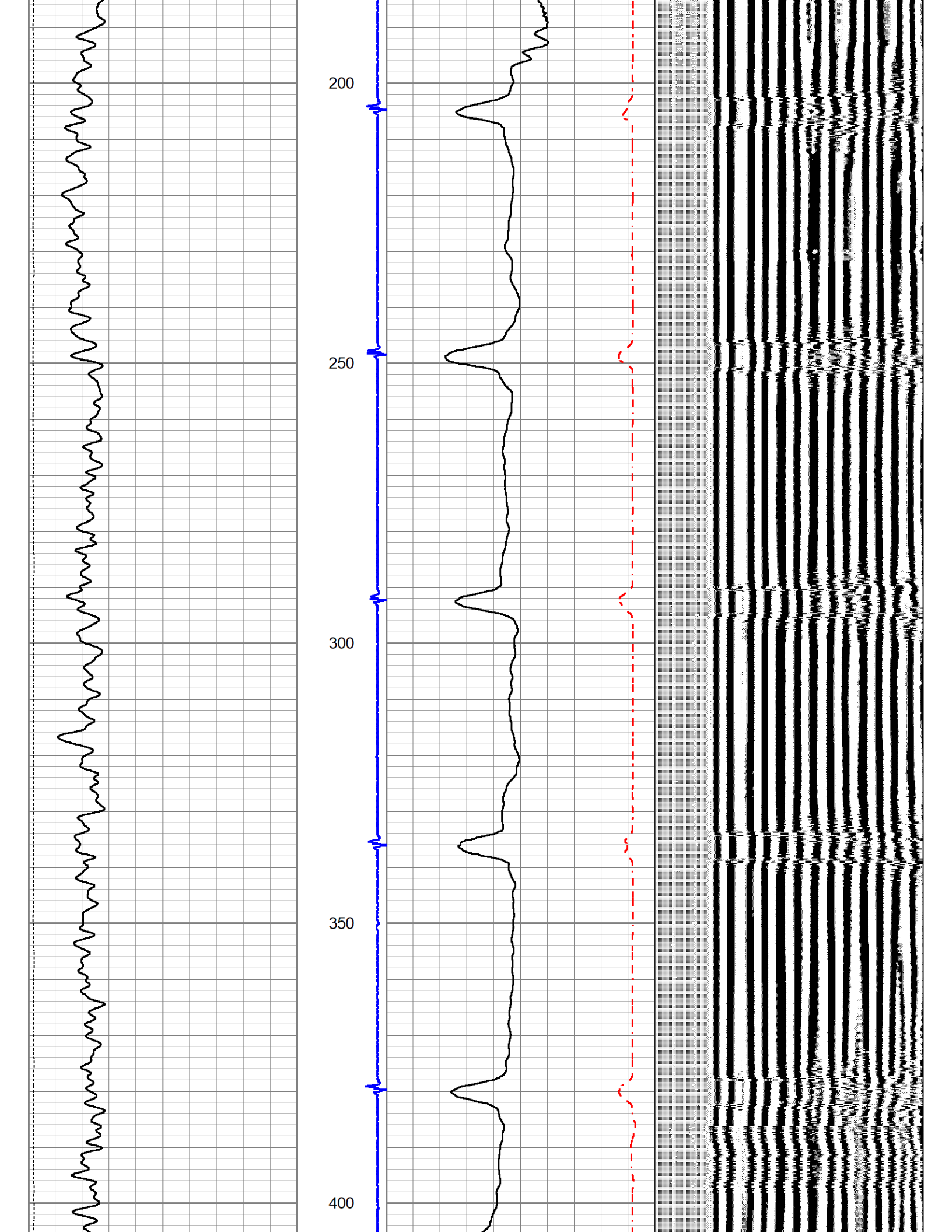
# MAIN PASS



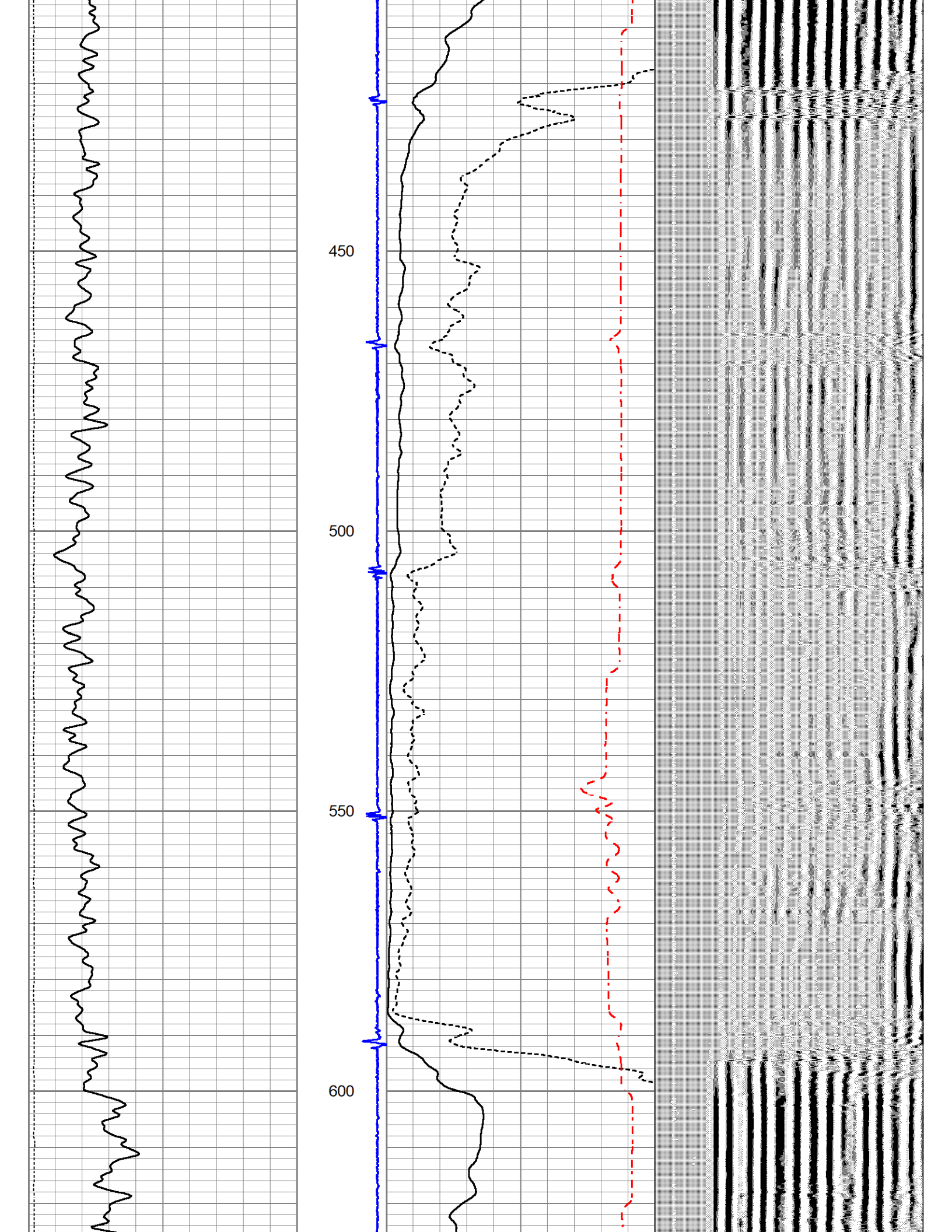
|                     |                            |
|---------------------|----------------------------|
| Database File       | 6-19-24.db                 |
| Dataset Pathname    | pass8                      |
| Presentation Format | zioncbl                    |
| Dataset Creation    | Wed Jun 19 08:43:05 2024   |
| Charted by          | Depth in Feet scaled 1:240 |

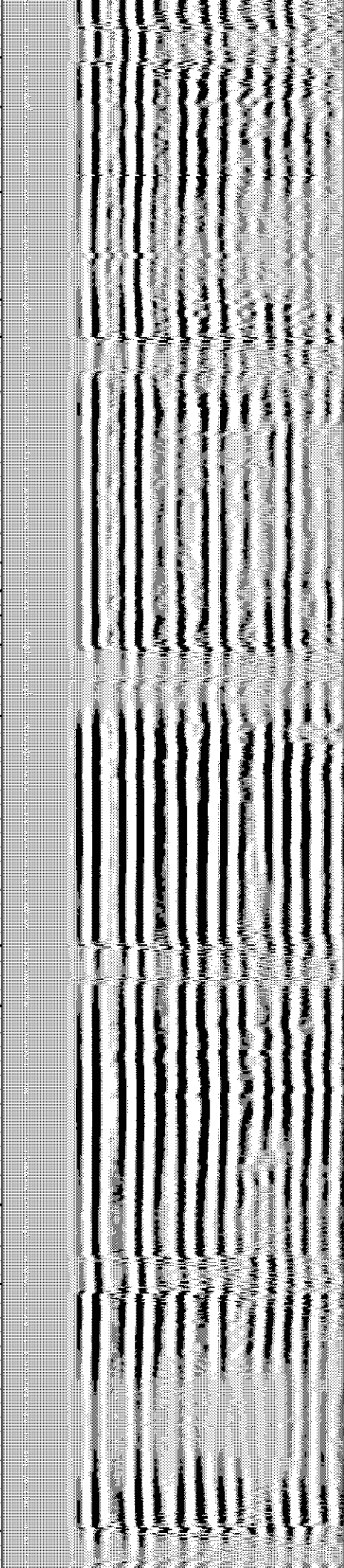
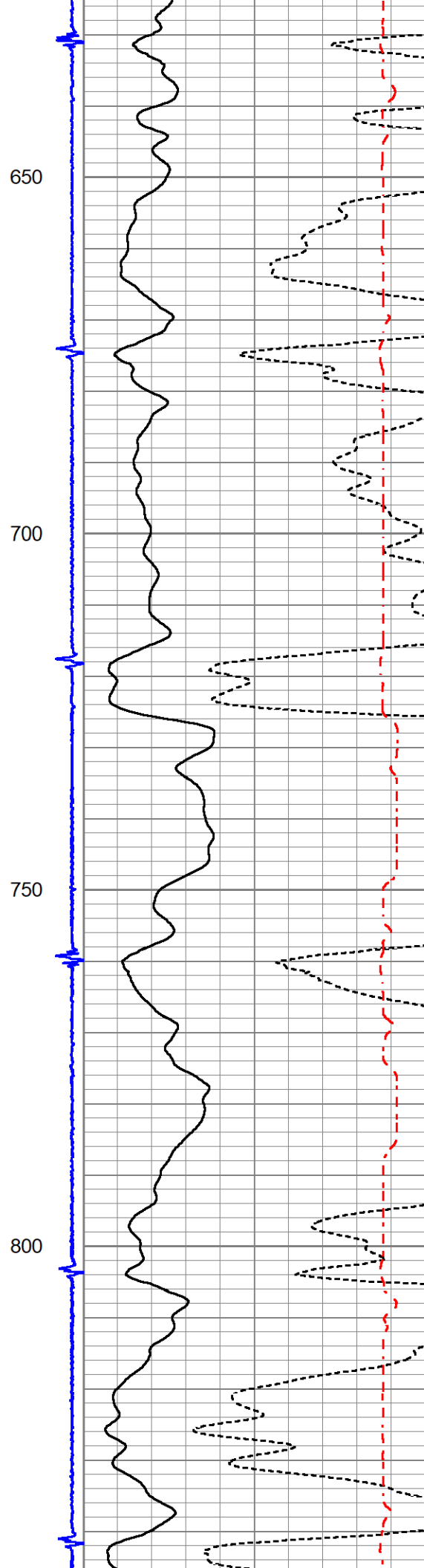
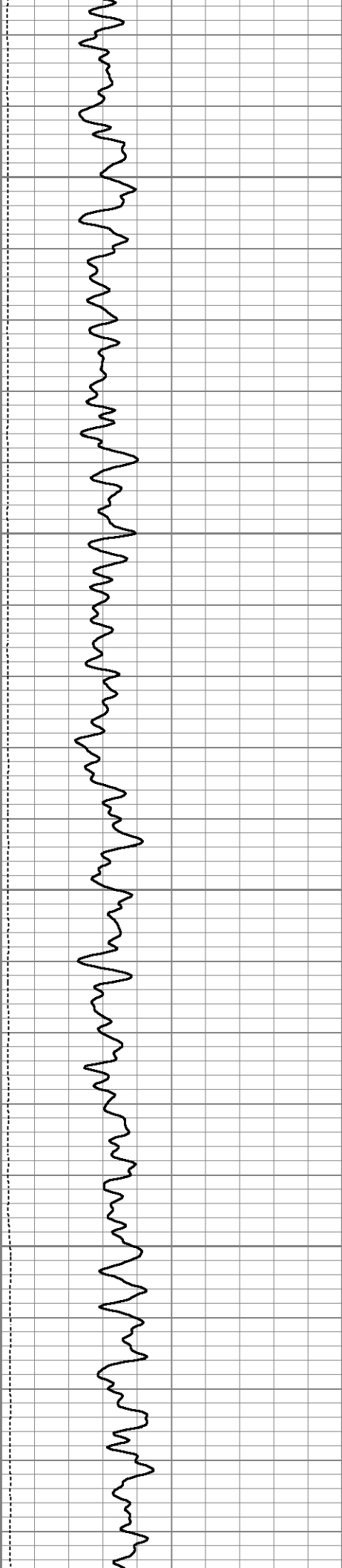
|      |                     |     |                 |   |                          |                |     |            |      |
|------|---------------------|-----|-----------------|---|--------------------------|----------------|-----|------------|------|
| 0    | Gamma Ray (GAPI)    | 250 | Collar Location | 0 | Amplified Amplitude (mV) | 20             | 200 | VDL (usec) | 1200 |
| -100 | Line Speed (ft/min) | 100 | -9              | 1 | 0                        | Amplitude (mV) | 100 |            |      |
|      |                     |     |                 |   | 1200                     | TT3FT (usec)   | 200 |            |      |



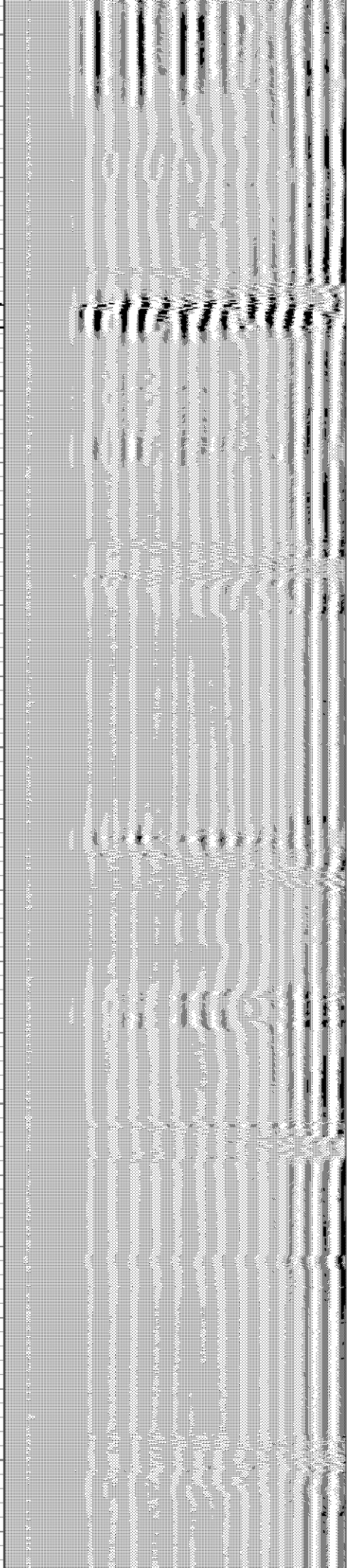
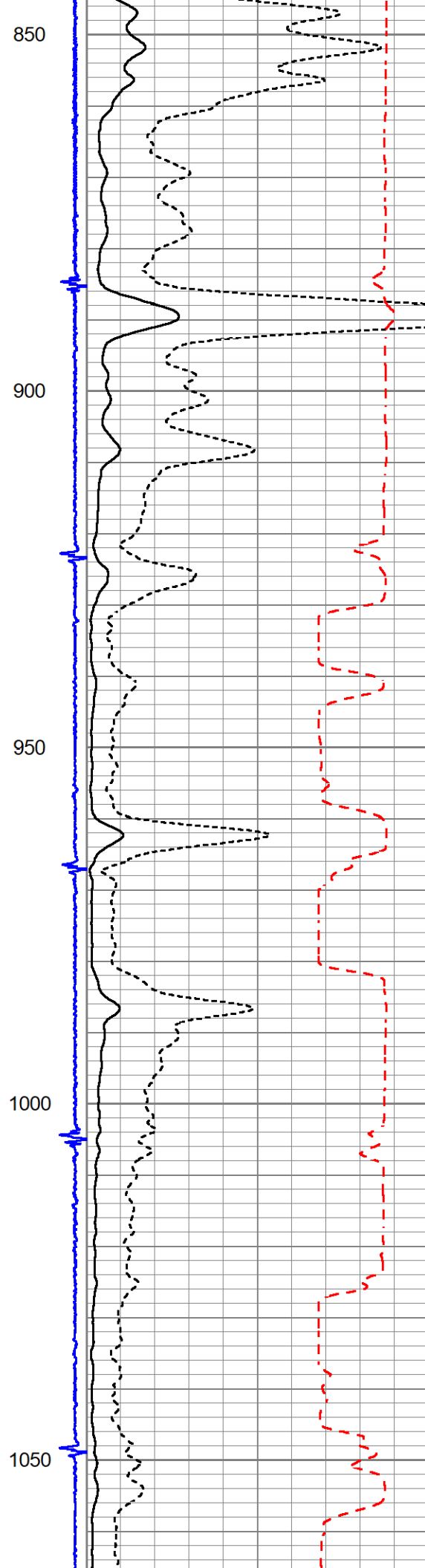


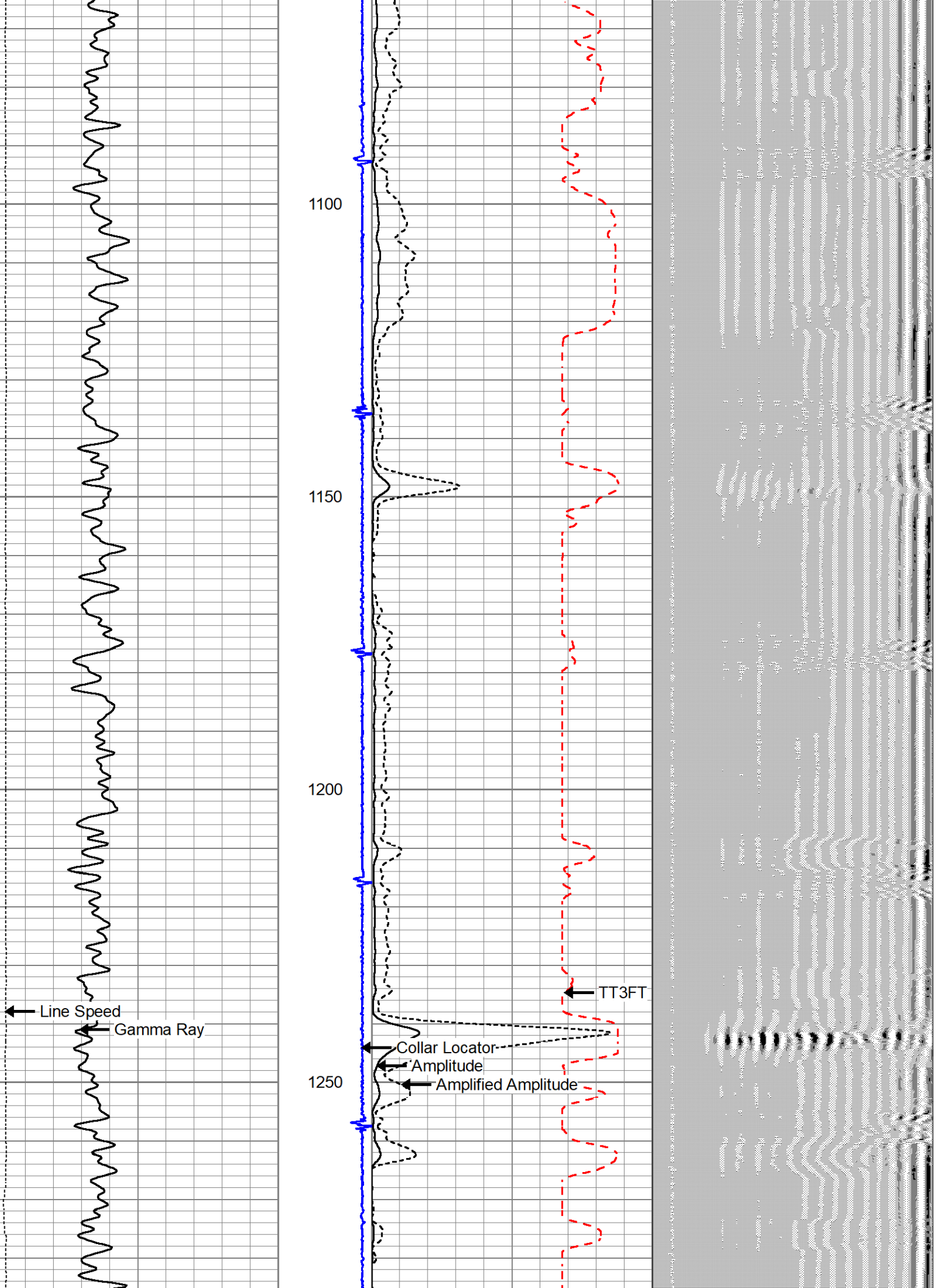


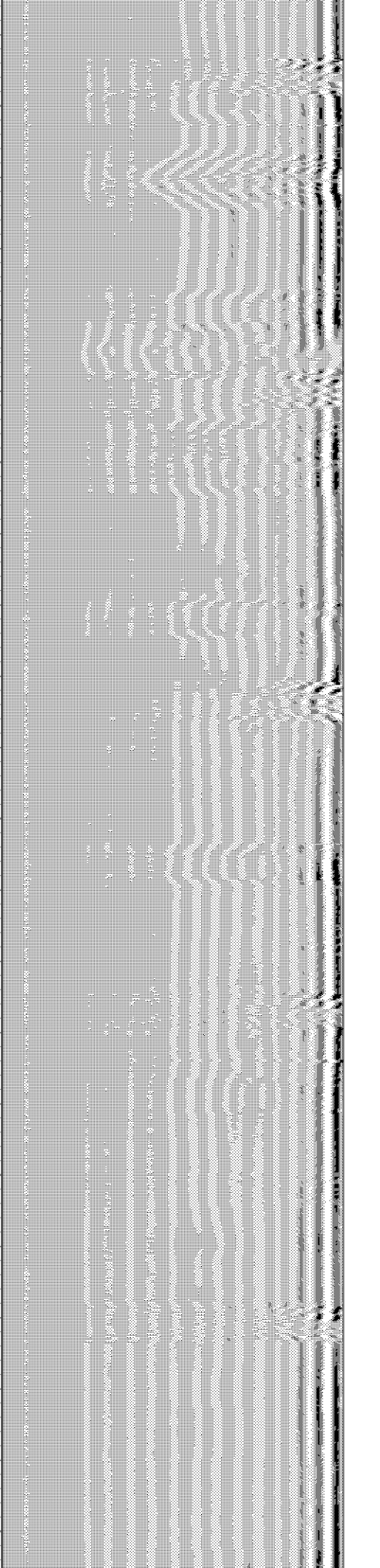
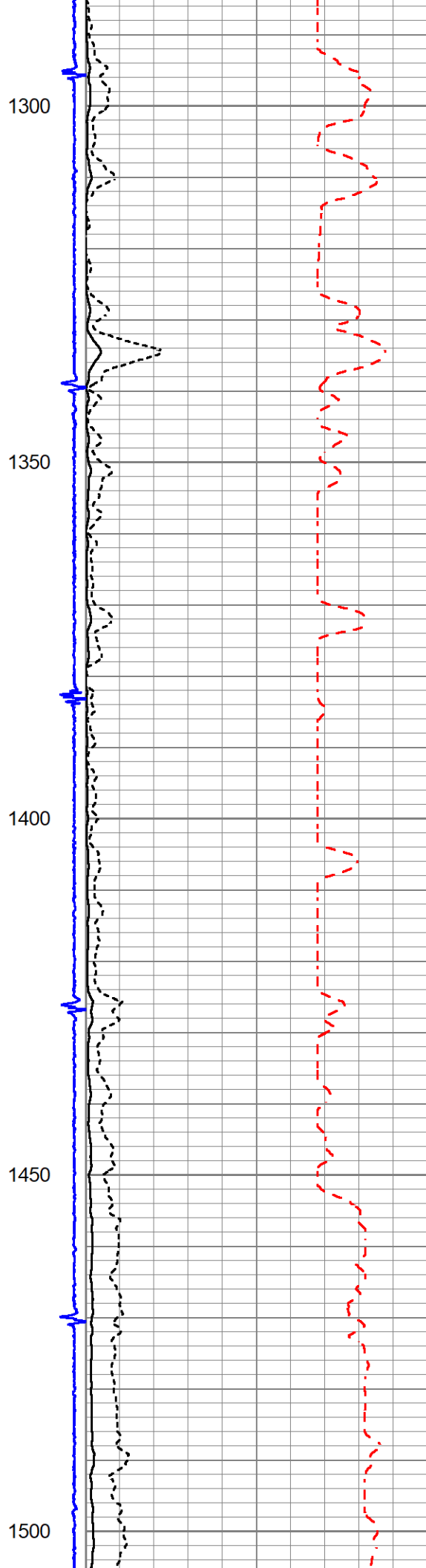
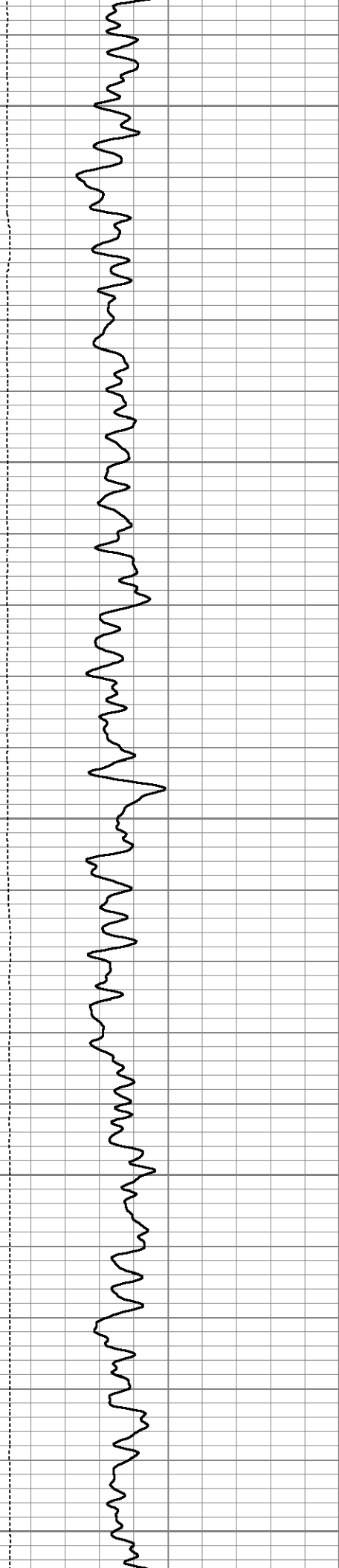




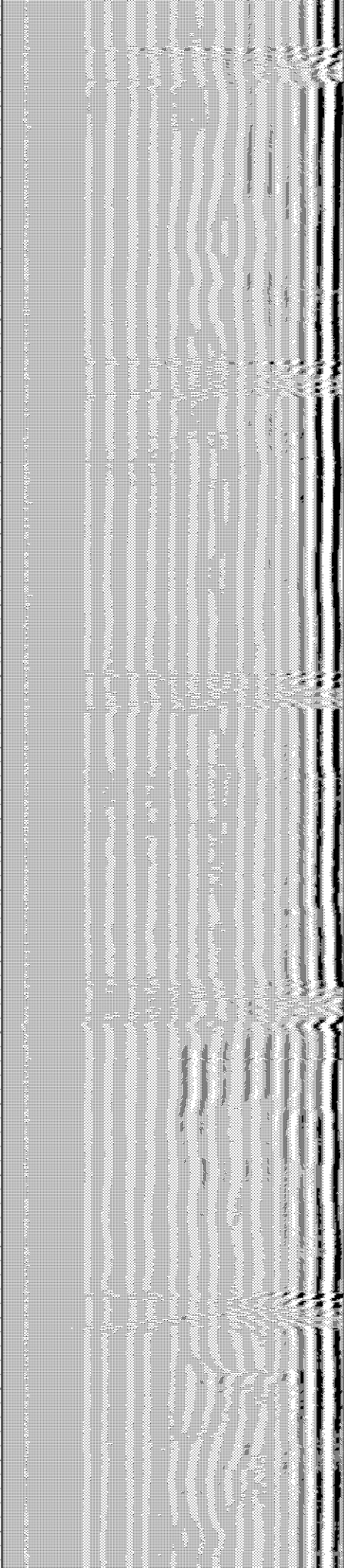
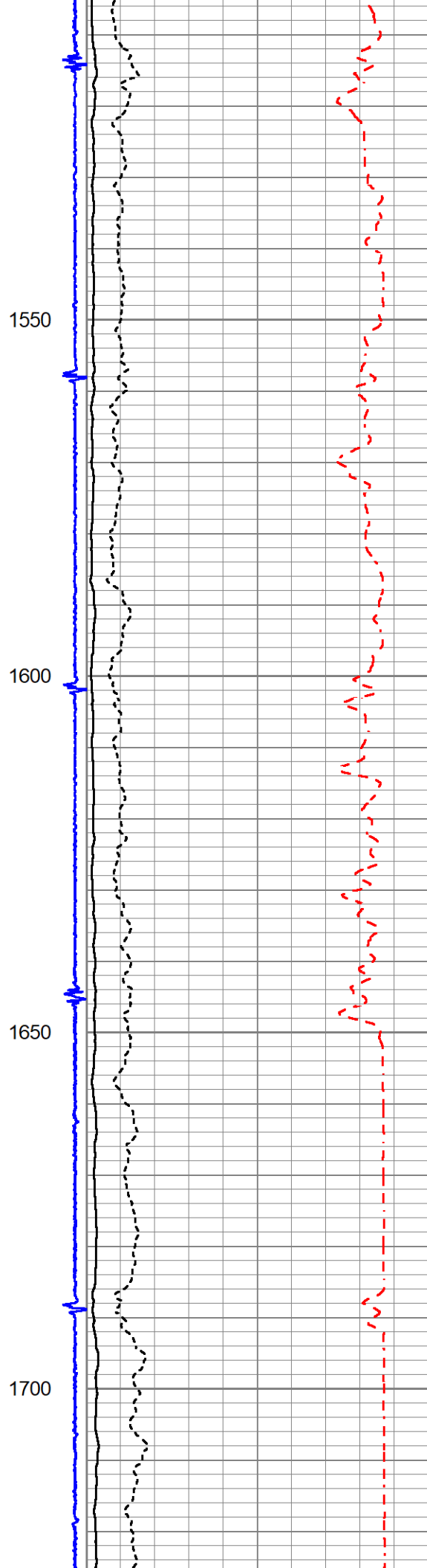
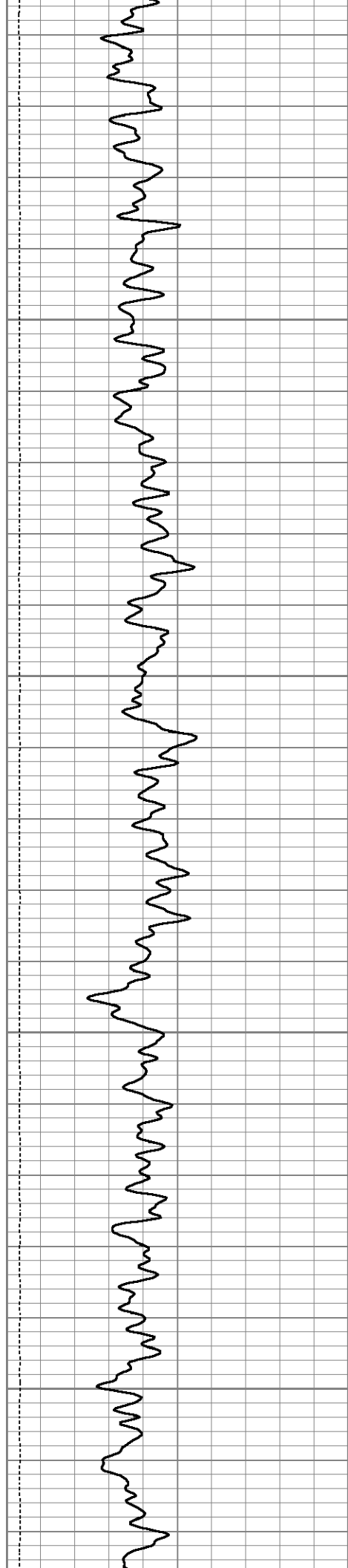


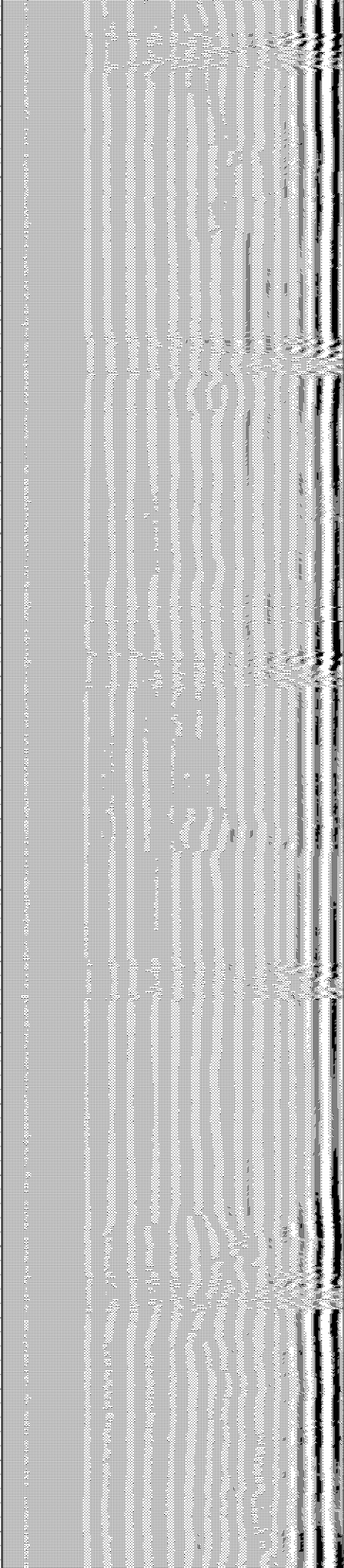
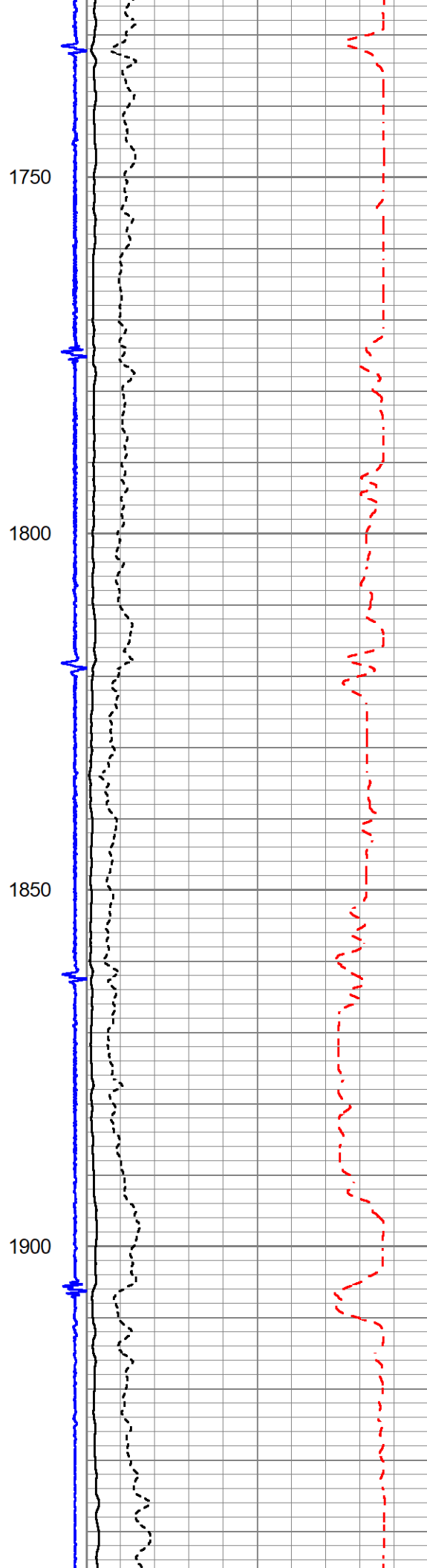
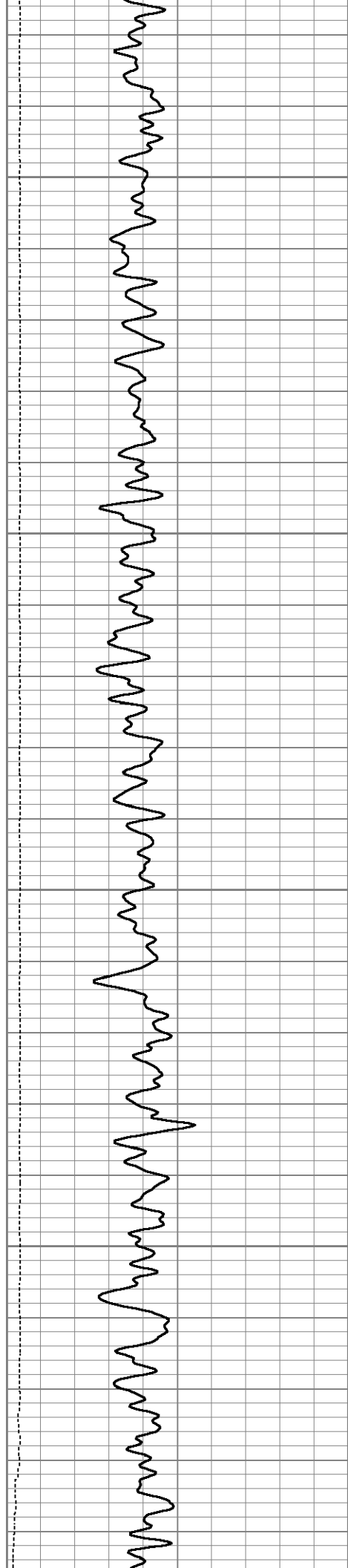


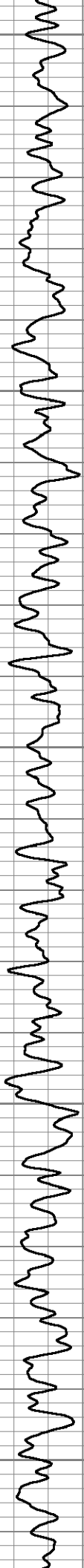












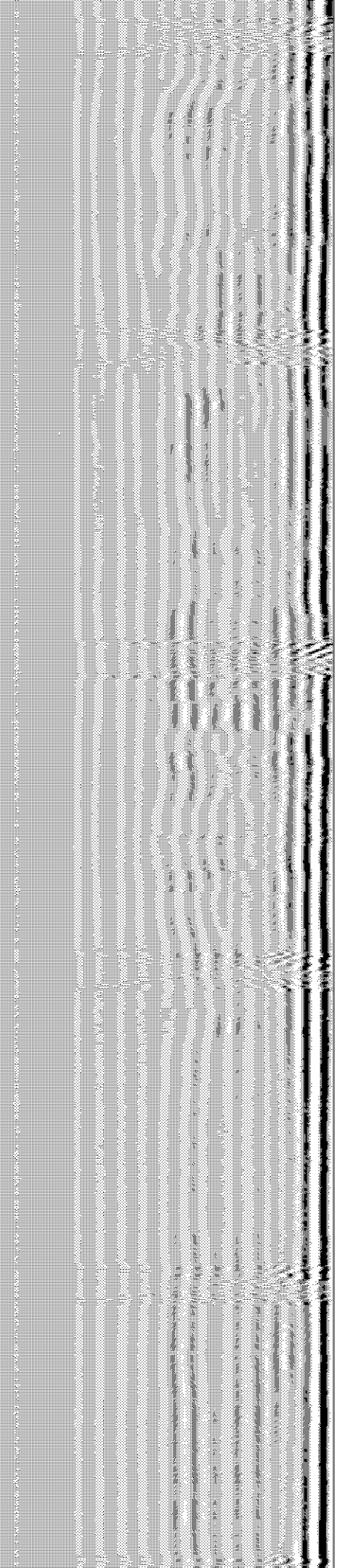
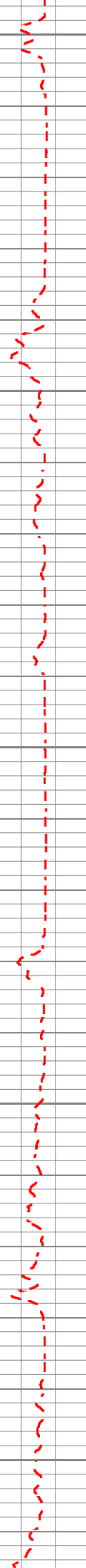
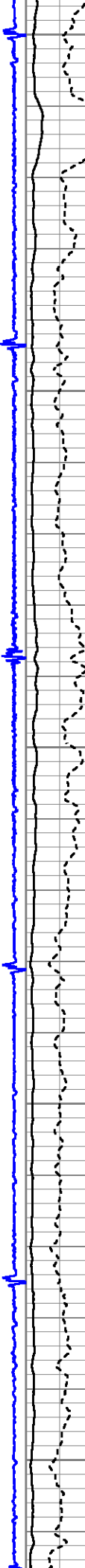
1950

2000

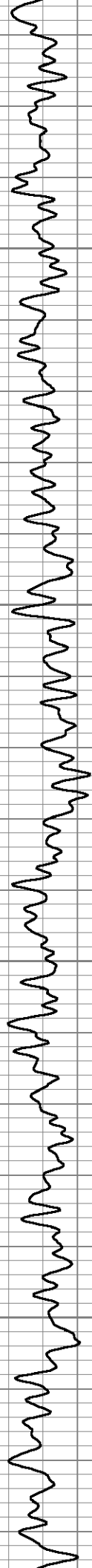
2050

2100

2150





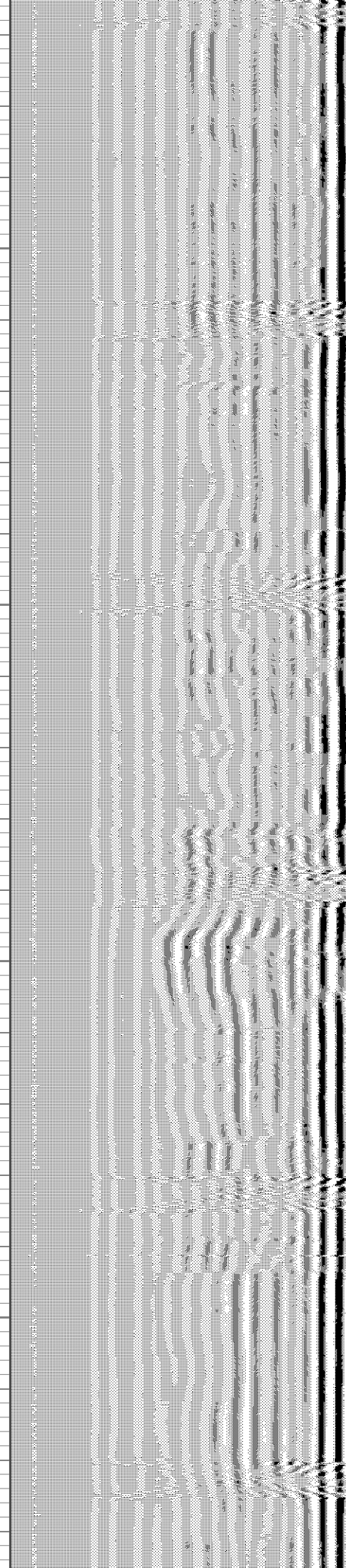
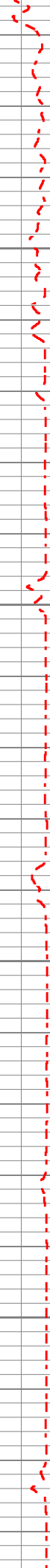
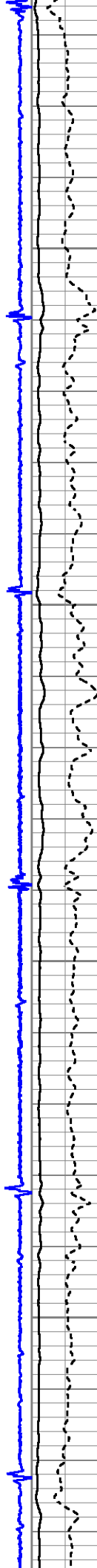


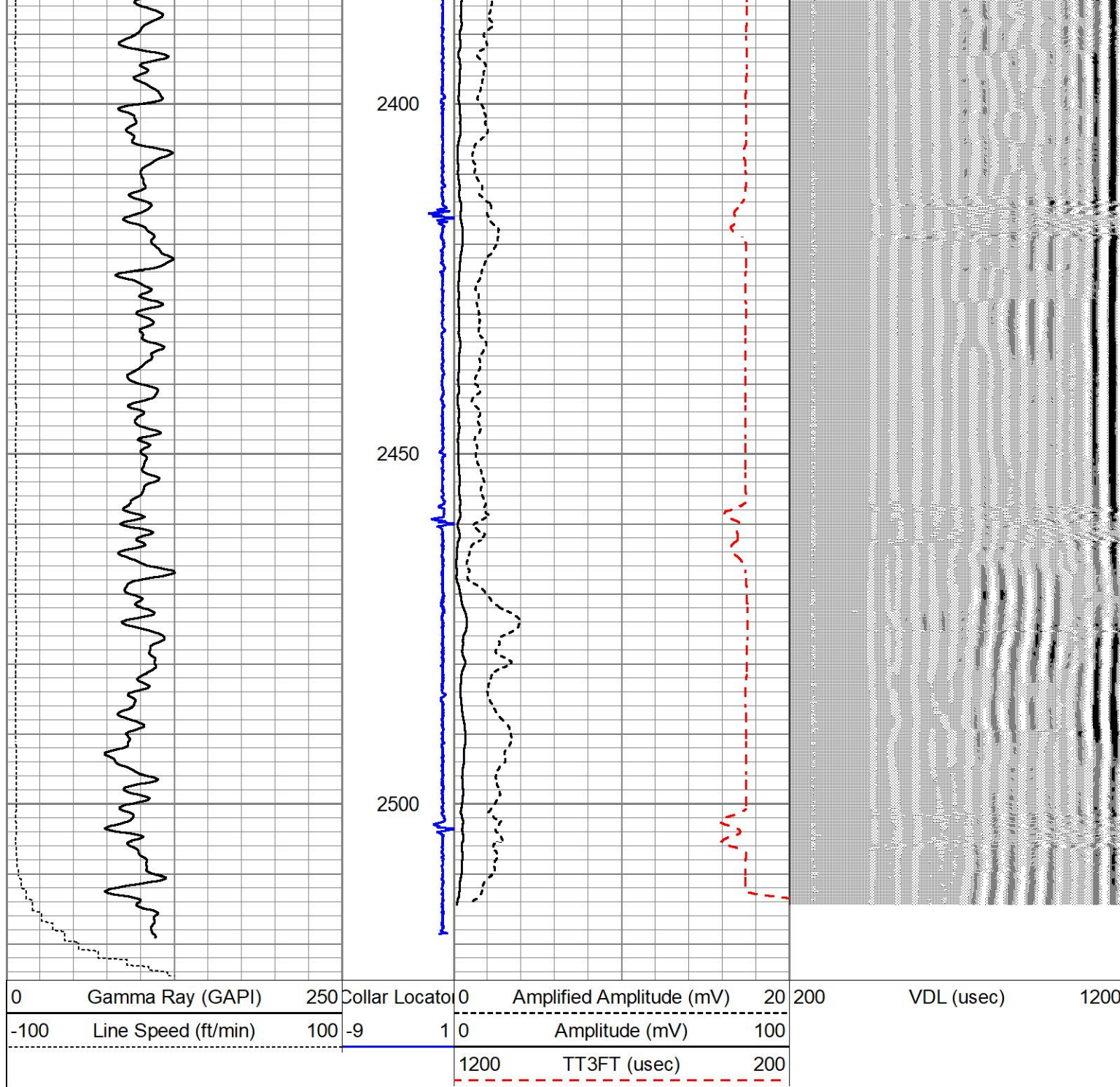
2200

2250

2300

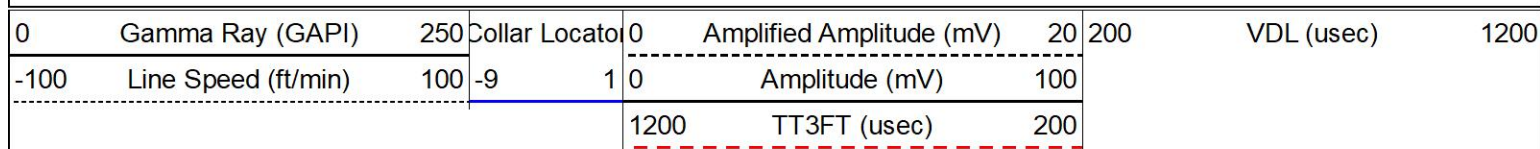
2350



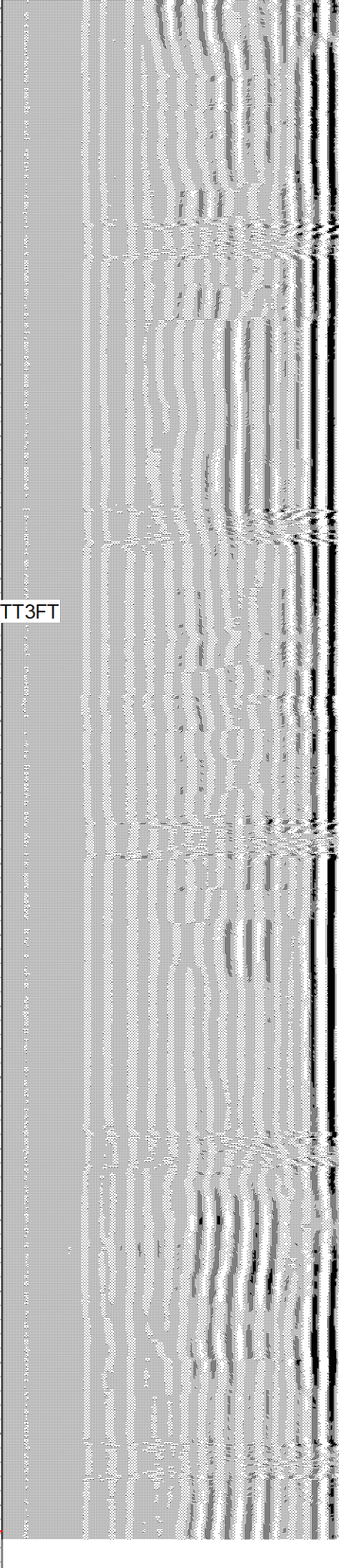
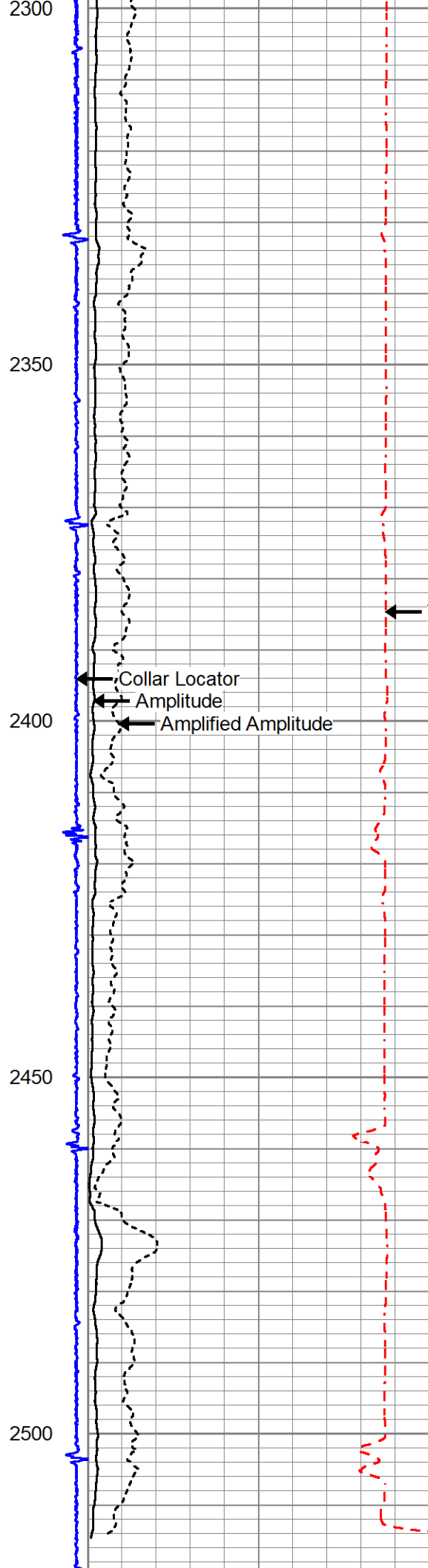
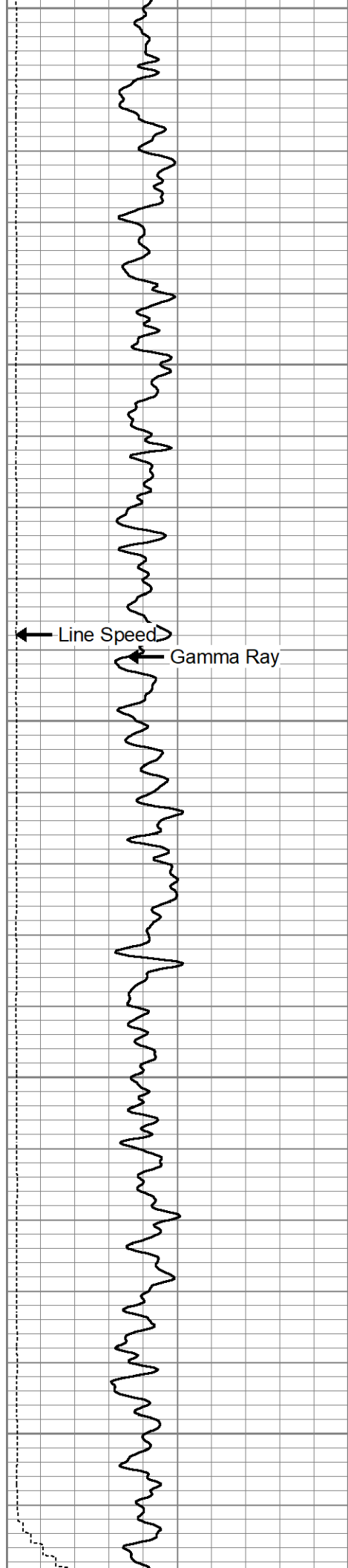


# REPEAT PASS

Database File 6-19-24.db  
 Dataset Pathname pass6  
 Presentation Format zioncbl  
 Dataset Creation Wed Jun 19 08:37:36 2024  
 Charted by Depth in Feet scaled 1:240









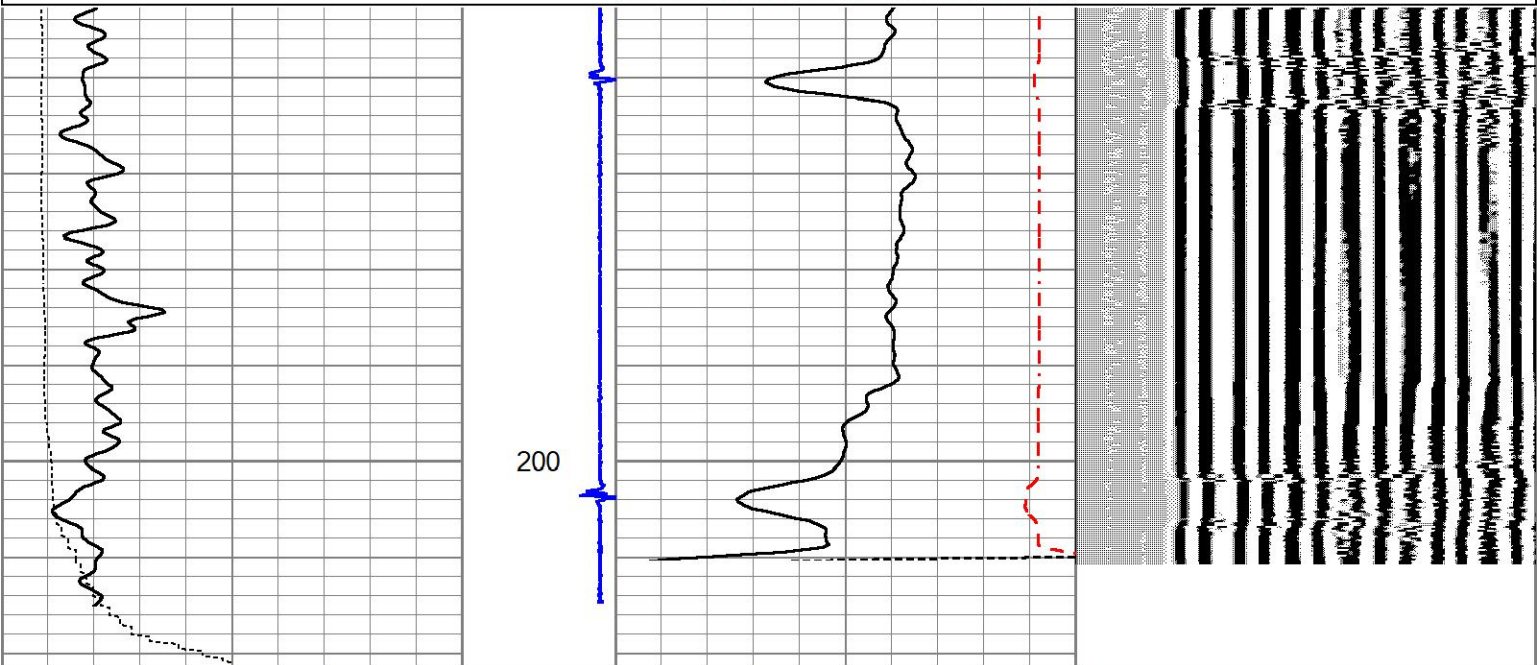
|      |                     |     |                 |   |                          |                |     |            |      |
|------|---------------------|-----|-----------------|---|--------------------------|----------------|-----|------------|------|
| 0    | Gamma Ray (GAPI)    | 250 | Collar Location | 0 | Amplified Amplitude (mV) | 20             | 200 | VDL (usec) | 1200 |
| -100 | Line Speed (ft/min) | 100 | -9              | 1 | 0                        | Amplitude (mV) | 100 |            |      |
|      |                     |     |                 |   | 1200                     | TT3FT (usec)   | 200 |            |      |



# CALIBRATION PASS

Database File 6-19-24.db  
 Dataset Pathname pass4  
 Presentation Format zioncbl  
 Dataset Creation Wed Jun 19 08:17:31 2024  
 Charted by Depth in Feet scaled 1:240

|      |                     |     |                 |   |                          |                |     |            |      |
|------|---------------------|-----|-----------------|---|--------------------------|----------------|-----|------------|------|
| 0    | Gamma Ray (GAPI)    | 250 | Collar Location | 0 | Amplified Amplitude (mV) | 20             | 200 | VDL (usec) | 1200 |
| -100 | Line Speed (ft/min) | 100 | -9              | 1 | 0                        | Amplitude (mV) | 100 |            |      |
|      |                     |     |                 |   | 1200                     | TT3FT (usec)   | 200 |            |      |



|      |                     |     |                 |   |                          |                |     |            |      |
|------|---------------------|-----|-----------------|---|--------------------------|----------------|-----|------------|------|
| 0    | Gamma Ray (GAPI)    | 250 | Collar Location | 0 | Amplified Amplitude (mV) | 20             | 200 | VDL (usec) | 1200 |
| -100 | Line Speed (ft/min) | 100 | -9              | 1 | 0                        | Amplitude (mV) | 100 |            |      |
|      |                     |     |                 |   | 1200                     | TT3FT (usec)   | 200 |            |      |

## Calibration Report

Database File 6-19-24.db  
 Dataset Pathname pass4  
 Dataset Creation Wed Jun 19 08:17:31 2024

### Gamma Ray Calibration Report

Serial Number: 275  
 Tool Model: Probe  
 Performed: Thu Aug 07 08:00:19 2008  
 Calibrator Value: 100.0 GAPI  
 Background Reading: 35.0 cps

|                     |        |          |
|---------------------|--------|----------|
| Calibrator Reading: | 160.0  | cps      |
| Sensitivity:        | 1.0000 | GAPI/cps |

Segmented Cement Bond Log Calibration Report

|                              |         |    |
|------------------------------|---------|----|
| Serial Number:               | 275     |    |
| Tool Model:                  | Probe   |    |
| Calibration Casing Diameter: | 7.000   | in |
| Calibration Depth:           | 180.825 | ft |

|   |         |       |                 |        |         |        |
|---|---------|-------|-----------------|--------|---------|--------|
| Master Calibration, performed Wed Jun 19 08:16:37 2024: |         |       |                 |        |         |        |
|   | Raw (v) |       | Calibrated (mv) |        | Results |        |
|   | Zero    | Cal   | Zero            | Cal    | Gain    | Offset |
| 3'  | 0.001   | 1.004 | 1.000           | 62.165 | 61.004  | 0.931  |
| CAL   |         |       |                 |        |         |        |
| 5'  | 0.001   | 1.120 | 1.000           | 62.165 | 54.667  | 0.935  |
| SUM   |         |       |                 |        |         |        |
| S1  |         |       |                 |        |         |        |
| S2  |         |       |                 |        |         |        |
| S3  |         |       |                 |        |         |        |
| S4  |         |       |                 |        |         |        |
| S5  |         |       |                 |        |         |        |
| S6  |         |       |                 |        |         |        |
| S7  |         |       |                 |        |         |        |
| S8  |         |       |                 |        |         |        |

|  |         |     |                |     |         |        |
|--|---------|-----|----------------|-----|---------|--------|
| Internal Reference Calibration, performed (Not Performed): |         |     |                |     |         |        |
|  | Raw (v) |     | Calibrated (v) |     | Results |        |
|  | Zero    | Cal | Zero           | Cal | Gain    | Offset |
| CAL  |         |     |                |     |         |        |

|   |         |  |                |  |         |  |
|---|---------|--|----------------|--|---------|--|
| Air Zero Calibration, performed Thu May 28 09:57:00 2020: |         |  |                |  |         |  |
|   | Raw (v) |  | Calibrated (v) |  | Results |  |
|   | Zero    |  | Zero           |  | Offset  |  |
| 3'  | 0.000   |  | 0.000          |  | 0.000   |  |
| 5'  | 0.000   |  | 0.000          |  | 0.000   |  |
| SUM   |         |  |                |  |         |  |
| S1  |         |  |                |  |         |  |
| S2  |         |  |                |  |         |  |
| S3  |         |  |                |  |         |  |
| S4  |         |  |                |  |         |  |
| S5  |         |  |                |  |         |  |
| S6  |         |  |                |  |         |  |
| S7  |         |  |                |  |         |  |
| S8  |         |  |                |  |         |  |

|                    |                          |  |
|--------------------|--------------------------|--|
| Calibration Report |                          |  |
| Database File      | 6-19-24.db               |  |
| Dataset Pathname   | pass8                    |  |
| Dataset Creation   | Wed Jun 19 08:43:05 2024 |  |

|                     |                          |          |
|---------------------|--------------------------|----------|
| Serial Number:      | 275                      |          |
| Tool Model:         | Probe                    |          |
| Performed:          | Thu Aug 07 08:00:19 2008 |          |
| Calibrator Value:   | 100.0                    | GAPI     |
| Background Reading: | 35.0                     | cps      |
| Calibrator Reading: | 160.0                    | cps      |
| Sensitivity:        | 1.0000                   | GAPI/cps |

Segmented Cement Bond Log Calibration Report

|                              |         |    |
|------------------------------|---------|----|
| Serial Number:               | 275     |    |
| Tool Model:                  | Probe   |    |
| Calibration Casing Diameter: | 7.000   | in |
| Calibration Depth:           | 180.825 | ft |




|   |         |       |                 |        |         |        |
|---|---------|-------|-----------------|--------|---------|--------|
| Master Calibration, performed Wed Jun 19 08:16:37 2024: |         |       |                 |        |         |        |
|   | Raw (v) |       | Calibrated (mv) |        | Results |        |
|   | Zero    | Cal   | Zero            | Cal    | Gain    | Offset |
| 3'  | 0.001   | 1.004 | 1.000           | 62.165 | 61.004  | 0.931  |
| CAL   |         |       |                 |        |         |        |
| 5'  | 0.001   | 1.120 | 1.000           | 62.165 | 54.667  | 0.935  |
| SUM   |         |       |                 |        |         |        |
| S1  |         |       |                 |        |         |        |
| S2  |         |       |                 |        |         |        |
| S3  |         |       |                 |        |         |        |
| S4  |         |       |                 |        |         |        |
| S5  |         |       |                 |        |         |        |
| S6  |         |       |                 |        |         |        |
| S7  |         |       |                 |        |         |        |
| S8  |         |       |                 |        |         |        |

|  |         |     |                |     |         |        |
|--|---------|-----|----------------|-----|---------|--------|
| Internal Reference Calibration, performed (Not Performed): |         |     |                |     |         |        |
|  | Raw (v) |     | Calibrated (v) |     | Results |        |
|  | Zero    | Cal | Zero           | Cal | Gain    | Offset |
| CAL  |         |     |                |     |         |        |

|   |         |  |                |  |         |  |
|---|---------|--|----------------|--|---------|--|
| Air Zero Calibration, performed Thu May 28 09:57:00 2020: |         |  |                |  |         |  |
|   | Raw (v) |  | Calibrated (v) |  | Results |  |
|   | Zero    |  | Zero           |  | Offset  |  |
| 3'  | 0.000   |  | 0.000          |  | 0.000   |  |
| 5'  | 0.000   |  | 0.000          |  | 0.000   |  |
| SUM   |         |  |                |  |         |  |
| S1  |         |  |                |  |         |  |
| S2  |         |  |                |  |         |  |
| S3  |         |  |                |  |         |  |
| S4  |         |  |                |  |         |  |
| S5  |         |  |                |  |         |  |
| S6  |         |  |                |  |         |  |
| S7  |         |  |                |  |         |  |
| S8  |         |  |                |  |         |  |

|        |             |           |             |             |           |             |
|--------|-------------|-----------|-------------|-------------|-----------|-------------|
| Sensor | Offset (ft) | Schematic | Description | Length (ft) | O.D. (in) | Weight (lb) |
|--------|-------------|-----------|-------------|-------------|-----------|-------------|



| Sensor   | Offset (ft) | Schematic   | Description  | Length (ft) | O.D. (in) | Weight (lb) |
|--|-------------|---|--|-------------|-----------|-------------|
|  |             |     | CENT-BC275-0000<br>Probe 2.75" Bowspring Centralizer | 2.83        | 2.75      | 24.00       |
| WVF3FT   | 11.60       |   | CBL-Probe (275)<br>Probe 2.75" Dual Receiver Bond    | 8.75        | 2.75      | 60.00       |
| WVF5FT   | 10.60       |   |  |             |           |             |
| WVFSYNC  | 7.42        |  |  |             |           |             |
| HEADVOLT   | 7.42        |   |  |             |           |             |
| CCL  | 6.47        |   |  |             |           |             |
|  |             |   | GR-Probe (275)<br>Probe 2.75" 4 Channel Pulse        | 4.58        | 2.75      | 30.00       |
| GR   | 3.73        |   |  |             |           |             |
|  |             |  | CENT-BC275-0000<br>Probe 2.75" Bowspring Centralizer | 2.83        | 2.75      | 24.00       |
| Dataset: 6-19-24.db: field/well/run1/pass8<br>Total length: 19.00 ft<br>Total weight: 138.00 lb<br>O.D.: 2.75 in |             |   |  |             |           |             |

# Log Variables

DatabaseC:\ProgramData\Warrior\Data\6-19-24.db  
Dataset field/well/run1/pass8/\_vars\_

## Top - Bottom

|                       |                        |                      |                     |                         |                       |                    |                         |
|-----------------------|------------------------|----------------------|---------------------|-------------------------|-----------------------|--------------------|-------------------------|
| BOREID<br>in<br>7.875 | BOTTEMP<br>degF<br>100 | CASEOD<br>in<br>7    | CASETHCK<br>in<br>0 | CASEWGHT<br>lb/ft<br>26 | MAXAMPL<br>mV<br>62.2 | MINAMPL<br>mV<br>1 | MINATTN<br>db/ft<br>0.8 |
| PERFS<br><br>No       | PPT<br>usec<br>0       | SRFTEMP<br>degF<br>0 | TDEPTH<br>ft<br>0   |                         |                       |                    |                         |

## Variable Description

|                                   |                               |                               |
|-----------------------------------|-------------------------------|-------------------------------|
| BOREID : Borehole I.D.            | CASEWGHT : Casing Weight      | PERFS : Perforation Flag      |
| BOTTEMP : Bottom Hole Temperature | MAXAMPL : Maximum Amplitude   | PPT : Predicted Pipe Time     |
| CASEOD : Casing O.D.              | MINAMPL : Minimum Amplitude   | SRFTEMP : Surface Temperature |
| CASETHCK : Casing Thickness       | MINATTN : Minimum Attenuation | TDEPTH : Total Depth          |