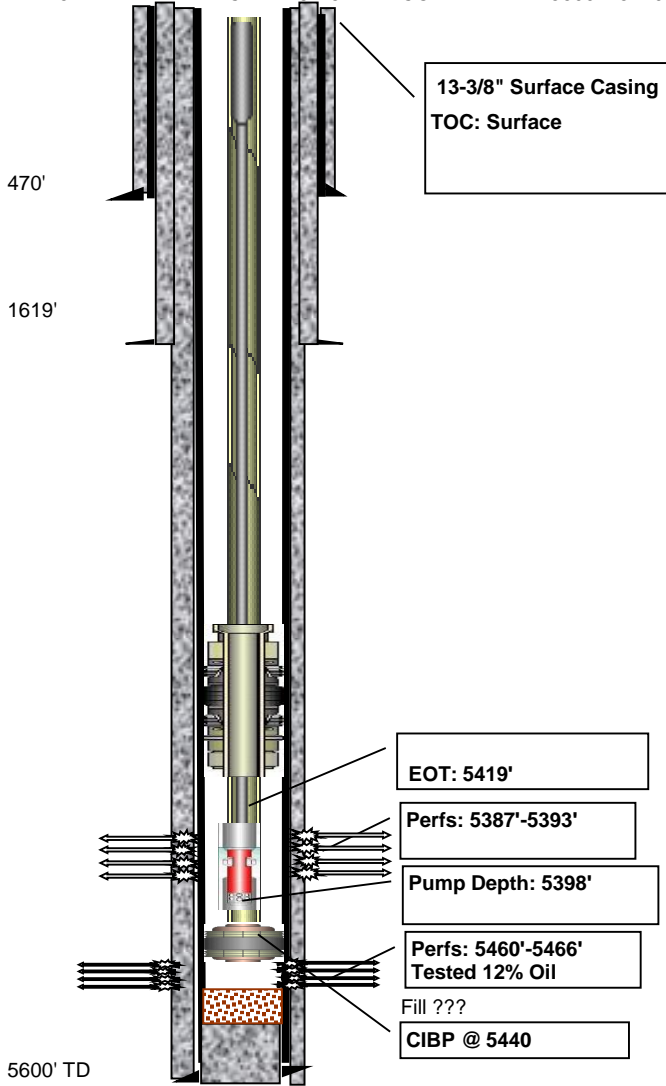


# Evan #2



# Producer

API #	Lease ID	Permit #	County	KB	GL	Current production	Sec N/ Sec E/W	Sec	Formation
05-017-07759			Cheyenne	4794'	4788'	9 BOPD	#####		SPGN
Pumping Unit	Motor	State	TD	PBTD	Initial production	Lease	Lease E/W	Blk	Svy
KB = 6'	CAP 228 25	CO	5600'	5440'					



### Perforations

Top	Bottom	SPF	Stimulation	OPEN?
5387	5393	4	500 Gal 15%	No
5460	5466	4		

### Casing

Depth	Size	Wgt (# Grade)	Description
470'	13-3/8"	48	
1619'	8-5/8"	24	
5600'	5-1/2"	14	

### Cement

Casing	Sacks	TOC	Description	OD Hole	Washout
13-3/8"	400	Surf		17.5	
8-5/8"	100			12.25	
5-1/2"	175			7.875	

### Tubing

Description	Size	Length	Top	Bot
1 Jt. 2-7/8"		10'	0'	10'
162 Jts 2-7/8"		5257'	10'	5267'
TAC		3'	5267'	5270'
4 Jts. 2-7/8"		129'	5270'	5398'
SN		1'	5398'	5399'
MA		20	5399'	5419'

### Rods

Description	Size	Length	Top	Bot
22'x1-1/2" Polished Rod	22			-3 19
6'-7/8" Pony Rods	6'		19'	25'
52 7/8" Rods	1300		25'	1325'
164-3/4" Rods	4100'		1325'	5425'
2-1/2"x1-1/4"x16'	20'		5425'	5445'

### Pump

2-1/2"x1-1/4"x16'