

Wellhead Closure Checklist

COGCC Rule 911.a.(4) Environmental Site Closure Assessment Field Form

| Additional attachments (optional): <u> </u> | | Pit Closure <u> </u> | | Tank Battery Closure <u> </u> | | Flowline Closure: <u> </u> | | Partially Buried Vault Closure <u> </u> | |
|-------------------------------------------------------------------------------------------------------------------------------------------------------------------------------------------------------------------------------------------------------------------------|------------------------------------------------------------------------|---------------------------|------------------|------------------------------------------------------------------------------------------------------|-----------------|------------------------------------------------|-------------------------------------|----------------------------------------------|--|
| Site Name & COGCC Facility Number: Frank CC #7-19 | | Date: 02/22/24 | | | | | Remediation Project #: 32307 | | |
| Associated Wells: 05-123-25351 | | Age of Site: years | | | | | Number of Photos Attached: 6 | | |
| Location: (GPS coordinates of wellhead or southeastern most wellhead for multiple) 40.329994 / -104.484596 | | | | | | Estimated Facility Size (acres): <u> </u> | | | |
| General Condition of Site: (General observations regarding housekeeping, corrosion, waste management, etc.) Good condition | | | | | | | | | |
| USCS Soil Type: CL | | | | Estimated Depth to Groundwater: ~10-20' | | | | | |
| Hydrocarbon Impacted Soils / Spills: (Note estimated size and if impact appears to be surficial or extends to an unknown depth) Black petroleum hydrocarbon staining observed. No odor observed | | | | | | | | | |
| Salt Crusted Soils or Impacted Vegetation: (Note estimated size and if impact appears to be surficial or extends to an unknown depth) None observed | | | | | | | | | |
| Wellhead(s) | | | | | | | | | |
| Well API | 05-123-25351 | | | | | | | | |
| Age | years | | | | | | | | |
| Condition of surface around wellhead | Good - No odor/no staining | | | | | | | | |
| PID Readings | WH-N: 1.2 | WH-E: 0.7 | WH-S: 0.9 | WH-W: 1.5 | | | | | |
| Condition of subsurface (staining present) | Black petroleum hydrocarbon staining observed. No odor observed | | | | | | | | |
| PID Readings | 33.6 | 30.5 | 1.6 | 1.7 | 18.7 | | | | |
| Sample taken? Location/Sample ID# | WH-SS-01 | WH-SS-02 | WH-SS-03 | WH-SS-04 | WH-FS-01 | | | | |
| Photo Number(s) | See photo log | | | | | | | | |
| Other observations regarding wellheads: Well casing cut/capped following assessment | | | | | | | | | |
| Summary | | | | | | | | | |
| Was impacted soil identified? No <input type="checkbox"/> Yes - less than 10 cubic yards <input checked="" type="checkbox"/> Yes - more than 10 cubic yards <input type="checkbox"/> | | | | | | | | | |
| Total number of samples field screened: 9 | | | | Total number of samples collected: 9 | | | | | |
| Highest PID Reading: 33.6 | | | | Total number of samples submitted to lab for analysis: 5 | | | | | |
| If more than 10 cubic yards of impacted soil were observed: | | | | | | | | | |
| Vertical extent: | | | | Estimated spill volume: | | | | | |
| N/A | | | | | | | | | |
| Lateral extent: | | | | Volume of soil removed: | | | | | |
| Is additional investigation required? | | | | | | | | | |
| Was groundwater encountered during the investigation? <input checked="" type="checkbox"/> No <input type="checkbox"/> Yes - not impacted or in contact with impacted soils <input type="checkbox"/> Yes - groundwater impacted and/or in contact with impacted soils | | | | | | | | | |
| Measured depth to groundwater: | | | | Was remedial groundwater removal conducted? Yes <input type="checkbox"/> No <input type="checkbox"/> | | | | | |
| Date Groundwater was encountered: | | | | Commencement date of removal: | | | | | |
| Sheen on groundwater? Yes <input type="checkbox"/> No <input type="checkbox"/> | | | | Volume of groundwater removed prior to sampling: | | | | | |
| Free product observed? Yes <input type="checkbox"/> No <input type="checkbox"/> | | | | Volume of groundwater removed post sampling: | | | | | |
| Total number of samples collected: | | | | Total Volume of groundwater removed: | | | | | |
| Total number of samples submitted to lab for analysis: | | | | | | | | | |



FIGURES

Figure 1: Topographic Site Location Map

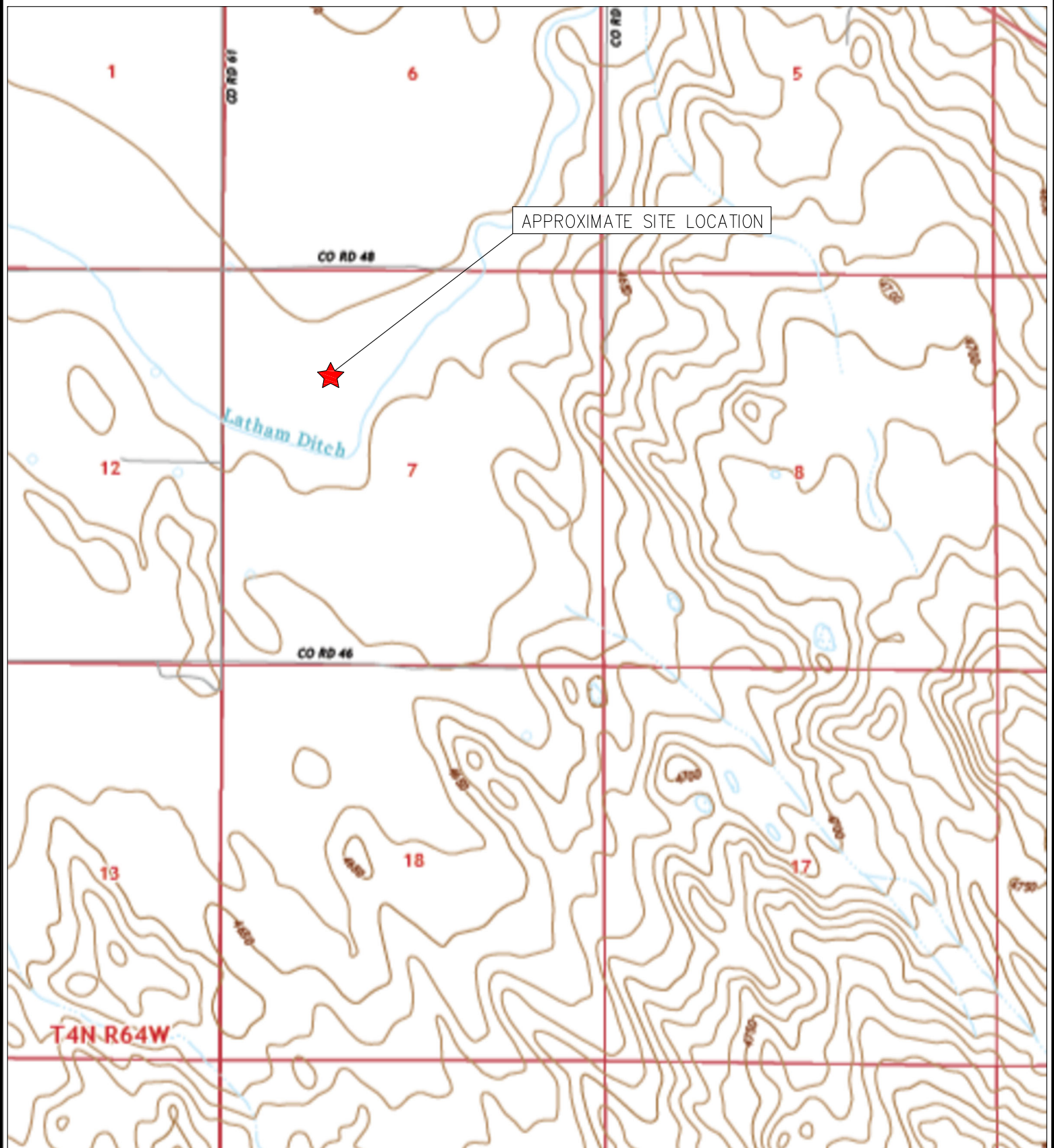
Figure 2: Aerial Site Location Map

Figure 3: Sample Location Map

Figure 4: Soil Analytical Map

Figure 5: Polycyclic Aromatic Hydrocarbons Map

Figure 6: Metals in Soil Map



TOPOGRAPHIC SITE LOCATION MAP
 FRANK CC #7-19
 CLOSURE ASSESSMENT
 40.329994 / -104.484596
 SE¼ NW¼ SEC.7 T4N R63W 6PM
 WELD COUNTY, COLORADO
 API # 05-123-25351
 REMEDIATION # 32307



EAGLE
 ENVIRONMENTAL
 CONSULTING, LLC

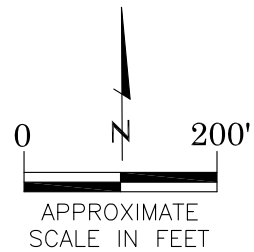
8000 W 44th Ave, Wheat Ridge, CO 80033
 Ph: 303-433-0479 • F: 303-325-5449





LEGEND

- FORMER FRANK CC #7-19 WELLHEAD (PLUGGED AND ABANDONED)
- ASSOCIATED SEPARATOR
- APPROXIMATE FLOWLINE LOCATION



AERIAL SITE LOCATION MAP
 FRANK CC #7-19
 CLOSURE ASSESSMENT
 40.329994 / -104.484596
 SE¼ NW¼ SEC.7 T4N R63W 6PM
 WELD COUNTY, COLORADO
 API # 05-123-25351
 REMEDIATION # 32307

FIGURE NO.
2

DRAWN BY:
SL



EAGLE

ENVIRONMENTAL
CONSULTING, LLC

8000 W 44th Ave, Wheat Ridge, CO 80033
Ph: 303-433-0479 • F: 303-325-5449



LEGEND

- - - WELLHEAD ASSESSMENT BOUNDARIES
- APPROXIMATE LOCATION OF SOIL SAMPLES SUBMITTED FOR LABORATORY ANALYSIS
- APPROXIMATE LOCATION OF SOIL SAMPLES FIELD SCREENED, ONLY, WITH PHOTOIONIZATION DETECTOR

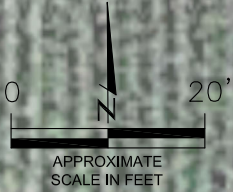
SAMPLE LOCATION MAP
 FRANK CC. #7-19
 CLOSURE ASSESSMENT
 40.329994 / -104.484596
 SE¼ NW¼ SEC.7 T4N R63W 6PM
 WELD COUNTY, COLORADO
 API # 05-123-25351
 REMEDIATION # 32307

FIGURE NO.
3

DRAWN BY:
GK



EAGLE
 ENVIRONMENTAL
 CONSULTING, LLC
 8000 W 44th Ave, Wheat Ridge, CO 80033
 Ph: 303-433-0479 • F: 303-325-5449



LEGEND

- WELLHEAD ASSESSMENT BOUNDARIES
- APPROXIMATE LOCATION OF SOIL SAMPLES SUBMITTED FOR LABORATORY ANALYSIS

PARAMETERS

SAMPLE LOCATION

DATE

DEPTH (FEET)

B = BENZENE (mg/kg)
T = TOLUENE (mg/kg)
E = ETHYLBENZENE (mg/kg)
X = TOTAL XYLENES (mg/kg)
N = NAPHTHALENE (mg/kg)
G = TPH-GRO (mg/kg)
D = TPH-DRO (mg/kg)
R = TPH-RRO (mg/kg)
1,2,4-TMB = 1,2,4 TRIMETHYLBENZENE (mg/kg)
1,3,5-TMB = 1,3,5 TRIMETHYLBENZENE (mg/kg)
Brn= BORON (mg/L)
EC = SPECIFIC CONDUCTANCE (mmhos/cm)
SAR= SODIUM ADSORPTION RATIO
pH = pH (pH UNITS)

mg/kg = MILLIGRAMS PER KILOGRAM
mg/L = MILLIGRAMS PER LITER
mmhos/cm = MILLIMHOS PER CENTIMETER

TPH-GRO = TOTAL PETROLEUM HYDROCARBONS - GASOLINE RANGE ORGANICS
TPH-DRO = TOTAL PETROLEUM HYDROCARBONS - DIESEL RANGE ORGANICS
TPH-RRO = TOTAL PETROLEUM HYDROCARBONS - RESIDUAL RANGE ORGANICS

NOTES:
VALUES PRESENTED WITH A LESS THAN SYMBOL (<) DID NOT CONTAIN CONCENTRATIONS AT OR ABOVE LABORATORY DETECTION LIMITS.

VALUES PRESENTED IN **BOLD** EXCEED ECMC TABLE 915-1 REGULATORY LIMITS.

VALUES PRESENTED WITH ASTERISK (*) EXCEED ECMC TABLE 915-1 PROTECTION OF GROUNDWATER SOIL SCREENING LEVELS, ONLY.

ECMC = ENERGY & CARBON MANAGEMENT COMMISSION

SOIL ANALYTICAL MAP
FRANK CC #7-19
CLOSURE ASSESSMENT
40.329994 / -104.484596
SE 1/4 NW 1/4 SEC.7 T4N R63W 6PM
WELD COUNTY, COLORADO
API # 05-123-25351
REMEDATION # 32307

FIGURE NO.
4

DRAWN BY:
GK

EAGLE ENVIRONMENTAL CONSULTING, LLC
8000 W 44th Ave, Wheat Ridge, CO 80033
Ph: 303-433-0479 • F: 303-325-5449

LEGEND

- WELLHEAD ASSESSMENT BOUNDARIES
- APPROXIMATE LOCATION OF SOIL SAMPLES SUBMITTED FOR LABORATORY ANALYSIS

PARAMETERS

SAMPLE LOCATION
DATE SAMPLE COLLECTED
APPROXIMATE DEPTH
POLYCYCLIC AROMATIC HYDROCARBONS (PAHs) (mg/kg)

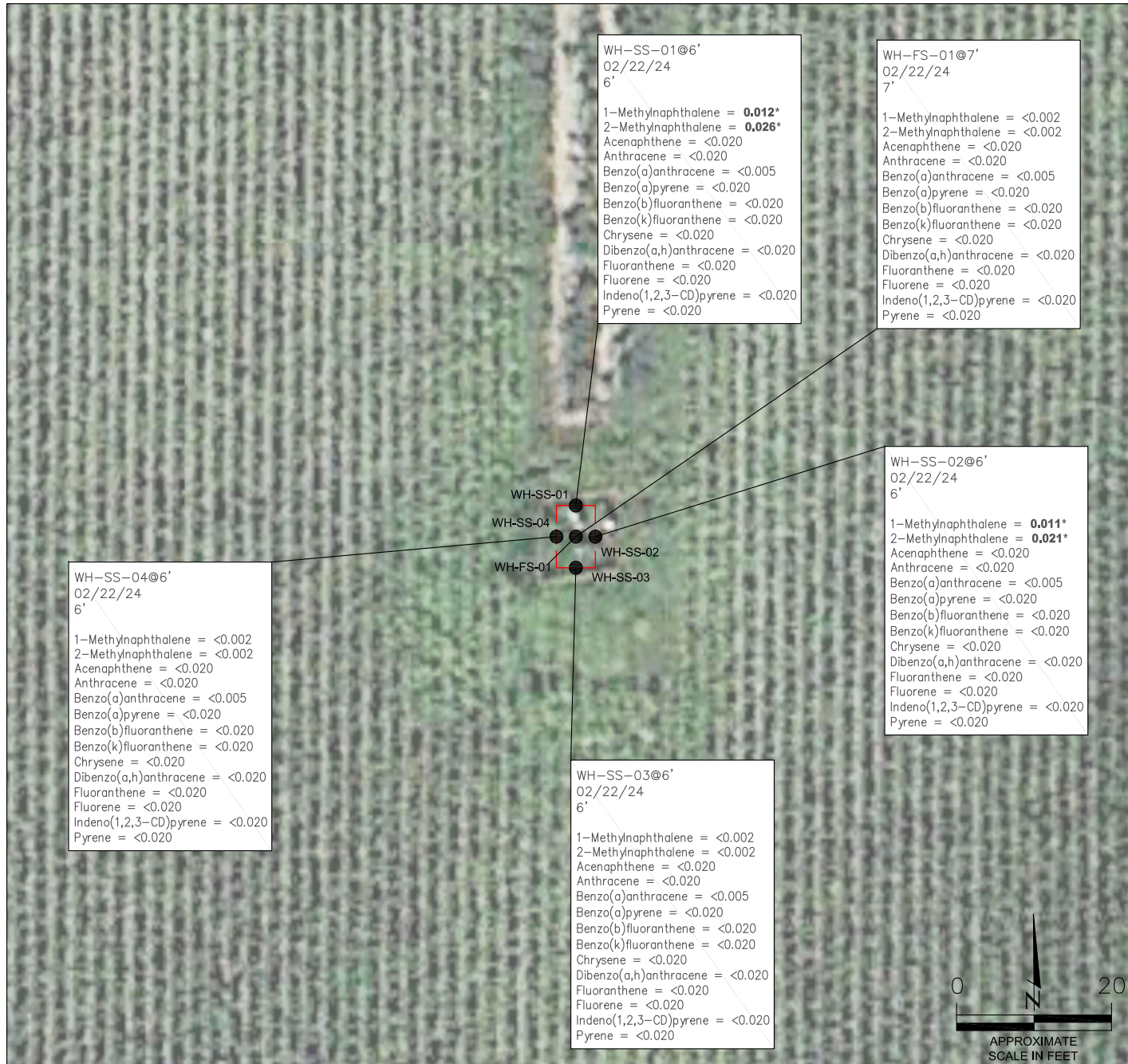
mg/kg = MILLIGRAMS PER KILOGRAM

NOTES:
VALUES PRESENTED WITH A LESS THAN SYMBOL (<) DID NOT CONTAIN CONCENTRATIONS AT OR ABOVE LABORATORY DETECTION LIMITS.

VALUES PRESENTED IN **BOLD** EXCEED ECMC TABLE 915-1 REGULATORY LIMITS.

VALUES PRESENTED WITH AN ASTERISK (*) EXCEED ECMC TABLE 915-1 GROUNDWATER SOIL SCREENING LEVELS, ONLY.

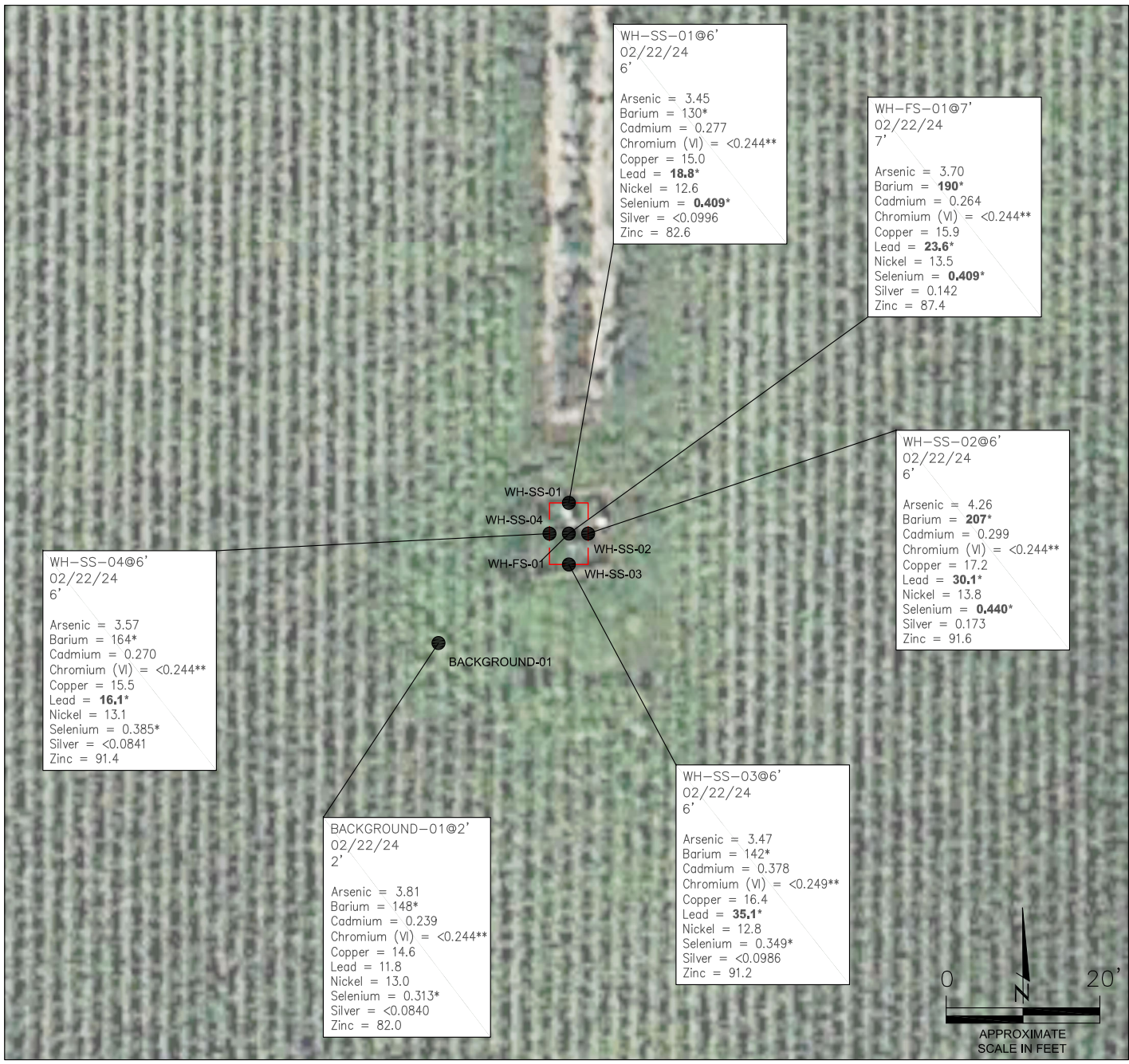
ECMC = ENERGY & CARBON MANAGEMENT COMMISSION



POLYCYCLIC AROMATIC HYDROCARBONS MAP
FRANK CC #7-19
CLOSURE ASSESSMENT
40.329994 / -104.484596
SE¼ NW¼ SEC.7 T4N R63W 6PM
WELD COUNTY, COLORADO
API # 05-123-25351
REMEDATION # 32307

FIGURE NO.
5
DRAWN BY:
GK





LEGEND

- WELLHEAD ASSESSMENT BOUNDARIES
- APPROXIMATE LOCATION OF SOIL SAMPLES SUBMITTED FOR LABORATORY ANALYSIS

PARAMETERS

| SAMPLE LOCATION | DATE SAMPLE COLLECTED | APPROXIMATE DEPTH |
|-------------------------|-----------------------|-------------------|
| Arsenic = (mg/kg) | Barium = (mg/kg) | Cadmium = (mg/kg) |
| Chromium (VI) = (mg/kg) | Copper = (mg/kg) | Lead = (mg/kg) |
| Nickel = (mg/kg) | Selenium = (mg/kg) | Silver = (mg/kg) |
| Zinc = (mg/kg) | | |

mg/kg = MILLIGRAMS PER KILOGRAM

NOTES:
VALUES PRESENTED WITH A LESS THAN SYMBOL (<) DID NOT CONTAIN CONCENTRATIONS AT/OR ABOVE LABORATORY REPORTING LIMITS AND/OR MINIMUM DETECTION LIMITS.

ELEVATED METALS ARE NATURALLY OCCURRING IN COLORADO. LOCAL CLEAN-UP LEVELS ARE 1.25*BACKGROUND CONCENTRATIONS WHERE APPLICABLE.

VALUES PRESENTED IN **BOLD** EXCEED ECMC TABLE 915-1 REGULATORY LIMITS AND APPLICABLE LOCAL CLEAN-UP LEVELS.

*VALUES EXCEED ECMC TABLE 915-1 PROTECTION OF GROUNDWATER SOIL SCREENING LEVELS, ONLY.

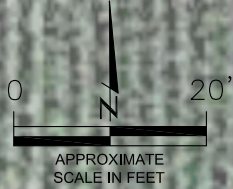
**ACHIEVABLE PRACTICAL QUANTITATIVE LIMITS FOR HEXAVALENT CHROMIUM (Cr VI) IN SOILS IS IN THE RANGE OF 0.1 TO 1 mg/kg.

ECMC = ENERGY & CARBON MANAGEMENT COMMISSION

METALS IN SOIL MAP
FRANK CC #7-19
CLOSURE ASSESSMENT
40.329994 / -104.484596
SE¼ NW¼ SEC.7 T4N R63W 6PM
WELD COUNTY, COLORADO
API # 05-123-25351
REMEDATION # 32307

FIGURE NO.
6

DRAWN BY:
GK





TABLES

Table 1: Photoionization Detector Reading Summary

Table 2: Soil Analytical Results Summary

TABLE 1
PHOTOIONIZATION DETECTOR READING SUMMARY
FRANK CC #7-19
CLOSURE ASSESSMENT
40.329994 / -104.484596
SE¼ NW¼ SEC.7 T4N R63W 6PM
WELD COUNTY, COLORADO
API # 05-123-25351
REMEDIATION # 32307

| Sample Location (Latitude/Longitude) | Date | Approximate Depth (feet) | PID Reading (ppm-v) | Lab Submission (Y/N) |
|--------------------------------------------------------------------------------------------|-------------|------------------------------------|-------------------------------|--------------------------------|
| WH-FS-01 @ 7' (40.330021 / -104.484608) | 02/22/24 | 7 | 18.7 | Y |
| WH-SS-01 @ 6' (40.330033 / -104.484608) | 02/22/24 | 6 | 33.6 | Y |
| WH-SS-02 @ 6' (40.330022 / -104.484599) | 02/22/24 | 6 | 30.5 | Y |
| WH-SS-03 @ 6' (40.330010 / -104.484607) | 02/22/24 | 6 | 1.6 | Y |
| WH-SS-04 @ 6' (40.330022 / -104.484616) | 02/22/24 | 6 | 1.7 | Y |
| WH-N @ 0.5' (40.330045 / -104.484609) | 02/22/24 | 0.5 | 1.2 | N |
| WH-E @ 0.5' (40.330023 / -104.484579) | 02/22/24 | 0.5 | 0.7 | N |
| WH-S @ 0.5' (40.330002 / -104.484607) | 02/22/24 | 0.5 | 0.9 | N |
| WH-W @ 0.5' (40.330020 / -104.484633) | 02/22/24 | 0.5 | 1.5 | N |
| Background-01 @ 2' (40.329983 / -104.484668) | 02/22/24 | 2 | 0.9 | Y |
| (Y/N) = Yes or No ppm-v = parts per million by volume PID = Photoionization Detector | | | | |



TABLE 2
SOIL ANALYTICAL RESULTS SUMMARY
FRANK CC #7-19
CLOSURE ASSESSMENT
40.329984 / -104.484596
SE¼ NW¼ SEC.7 T4N R63W 6PM
WELD COUNTY, COLORADO
API # 05-123-25351
REMIEDIATION # 32307

| Sample Location | | WH-FS-01 @ 7' | WH-SS-01 @ 6' | WH-SS-02 @ 6' | WH-SS-03 @ 6' | WH-SS-04 @ 6' | Background-01 @ 2' | | | |
|-------------------------------------------------------------------------------------------------------------------------------------------------------------------------------------------------------------------------------------------------------------------------------------------------------------------------------------------------------------------------------------------------------------------------------------------------------------------------------------------------------------------------------------------------------------------------------------------------------------------------------------------------------------------------------------------------------------------------------------------------------------------------------------------------------------------------------------------------------------------------|---------------|---------------------------|---------------------------|---------------------------|---------------------------|---------------------------|---------------------------|--------------|--------------|-------------|
| (Latitude / Longitude) | | (40.330021 / -104.484608) | (40.330033 / -104.484608) | (40.330022 / -104.484599) | (40.330010 / -104.484607) | (40.330022 / -104.484616) | (40.329983 / -104.484668) | | | |
| Sample Date | | 2/22/2024 | 2/22/2024 | 2/22/2024 | 2/22/2024 | 2/22/2024 | 2/22/2024 | | | |
| Sample Depth (feet) | | 7 | 6 | 6 | 6 | 6 | 2 | | | |
| PID Reading (ppm-v) | | 18.7 | 33.6 | 30.5 | 1.6 | 1.7 | 0.9 | | | |
| Regulatory Limits | | | | | | | | | | |
| Chemical of Concern | Units | ECMC Table 915-1 RSSLs | ECMC Table 915-1 GSSLs | Local Clean-Up Level | | | | | | |
| Volatile Organic Compounds | | | | | | | | | | |
| Benzene | mg/kg | 1.2 | 0.0026 | -- | <0.00200 | 0.00462* | <0.00200 | <0.00200 | <0.00200 | NA |
| Toluene | mg/kg | 490 | 0.69 | -- | 0.00286 | 0.0426 | 0.00358 | <0.00200 | <0.00200 | NA |
| Ethylbenzene | mg/kg | 5.8 | 0.78 | -- | <0.00200 | 0.00952 | <0.00200 | <0.00200 | <0.00200 | NA |
| Total Xylenes | mg/kg | 58 | 9.9 | -- | 0.0132 | 0.117 | 0.0107 | <0.00200 | <0.00200 | NA |
| Naphthalene | mg/kg | 2 | 0.0038 | -- | <0.00380 | <0.00380 | <0.00380 | <0.00380 | <0.00380 | NA |
| 1,2,4-Trimethylbenzene | mg/kg | 30 | 0.0081 | -- | 0.00472 | 0.0194* | 0.00356 | <0.00200 | <0.00200 | NA |
| 1,3,5-Trimethylbenzene | mg/kg | 27 | 0.0087 | -- | 0.00274 | 0.00892* | 0.00206 | <0.00200 | <0.00200 | NA |
| Total Petroleum Hydrocarbons | | | | | | | | | | |
| TPH-GRO | mg/kg | 500 | -- | -- | <0.200 | 0.719 | <0.200 | <0.200 | <0.200 | NA |
| TPH-DRO | mg/kg | | -- | -- | <25.0 | <25.0 | <25.0 | <25.0 | <25.0 | NA |
| TPH-RRO | mg/kg | | -- | -- | <100 | <100 | <100 | <100 | <100 | NA |
| Polycyclic Aromatics Hydrocarbons | | | | | | | | | | |
| 1-Methylnaphthalene | mg/kg | 18 | 0.006 | -- | <0.002 | 0.012* | 0.011* | <0.002 | <0.002 | NA |
| 2-Methylnaphthalene | mg/kg | 24 | 0.019 | -- | <0.002 | 0.026* | 0.021* | <0.002 | <0.002 | NA |
| Acenaphthene | mg/kg | 360 | 0.55 | -- | <0.020 | <0.020 | <0.020 | <0.020 | <0.020 | NA |
| Anthracene | mg/kg | 1800 | 5.8 | -- | <0.020 | <0.020 | <0.020 | <0.020 | <0.020 | NA |
| Benzo(a)-anthracene | mg/kg | 1.1 | 0.011 | -- | <0.005 | <0.005 | <0.005 | <0.005 | <0.005 | NA |
| Benzo(a)-pyrene | mg/kg | 0.11 | 0.24 | -- | <0.020 | <0.020 | <0.020 | <0.020 | <0.020 | NA |
| Benzo(b)-fluoranthene | mg/kg | 1.1 | 0.3 | -- | <0.020 | <0.020 | <0.020 | <0.020 | <0.020 | NA |
| Benzo(k)-fluoranthene | mg/kg | 11 | 2.9 | -- | <0.020 | <0.020 | <0.020 | <0.020 | <0.020 | NA |
| Chrysene | mg/kg | 110 | 9 | -- | <0.020 | <0.020 | <0.020 | <0.020 | <0.020 | NA |
| Dibenzo(a,h)-anthracene | mg/kg | 0.11 | 0.096 | -- | <0.020 | <0.020 | <0.020 | <0.020 | <0.020 | NA |
| Fluoranthene | mg/kg | 240 | 8.9 | -- | <0.020 | <0.020 | <0.020 | <0.020 | <0.020 | NA |
| Fluorene | mg/kg | 240 | 0.54 | -- | <0.020 | <0.020 | <0.020 | <0.020 | <0.020 | NA |
| Indeno(1,2,3-cd)-pyrene | mg/kg | 1.1 | 0.98 | -- | <0.020 | <0.020 | <0.020 | <0.020 | <0.020 | NA |
| Pyrene | mg/kg | 180 | 1.3 | -- | <0.020 | <0.020 | <0.020 | <0.020 | <0.020 | NA |
| Soil Suitability (Inorganics) | | | | | | | | | | |
| Boron | mg/L | 2 | -- | -- | 1.02 | 1.01 | 1.07 | 0.825 | 0.991 | 2.39 |
| pH | standard unit | 6-8.3 | -- | -- | 8.24 | 8.21 | 8.30 | 8.09 | 8.28 | 8.09 |
| Sodium Adsorption Ratio (SAR) | -- | <6 | -- | -- | 2.20 | 4.51 | 6.89 | 1.89 | 1.87 | 6.73 |
| Specific Conductance (EC) | mmhos/cm | <4 | -- | -- | 0.961 | 2.32 | 1.38 | 1.11 | 0.916 | 4.94 |
| Metals | | | | | | | | | | |
| Arsenic | mg/kg | 0.68 | 0.29 | 4.76 | 3.70 | 3.45 | 4.26 | 3.47 | 3.57 | 3.81 |
| Barium | mg/kg | 15000 | 82 | 185 | 190* | 130* | 207* | 142* | 164* | 148* |
| Cadmium | mg/kg | 71 | 0.38 | -- | 0.264 | 0.277 | 0.299 | 0.378 | 0.270 | 0.239 |
| Copper | mg/kg | 3100 | 46 | -- | 15.9 | 17.2 | 17.2 | 16.4 | 15.5 | 14.6 |
| Lead | mg/kg | 400 | 14 | 14.8 | 23.6* | 18.8* | 30.1* | 35.1* | 16.1* | 11.8 |
| Nickel | mg/kg | 1500 | 26 | -- | 13.5 | 12.6 | 13.8 | 12.8 | 13.1 | 13.0 |
| Selenium | mg/kg | 390 | 0.26 | 0.391 | 0.409* | 0.409* | 0.440* | 0.349* | 0.385* | 0.313* |
| Silver | mg/kg | 390 | 0.8 | -- | 0.142 | <0.0996 | 0.173 | <0.0986 | <0.0841 | <0.0840 |
| Zinc | mg/kg | 23000 | 370 | -- | 87.4 | 82.6 | 91.6 | 91.2 | 91.4 | 82.0 |
| Hexavalent Chromium | mg/kg | 0.3** | 0.00067** | 0.1 to 1.0** | <0.244** | <0.244** | <0.244** | <0.249** | <0.244** | <0.244** |
| ECMC = Energy & Carbon Management Commission mg/kg = milligrams per kilogram mmhos/cm = millimhos per centimeter PID = Photoionization Detector ppm-v = parts per million by volume mg/L = milligrams per liter NA = Not Analyzed Notes: Values presented with a less than symbol (<) did not contain concentrations at or above the laboratory reporting limit and/or minimum detection limit. Elevated metals are naturally occurring in Colorado. Local Clean-up Levels are 1.25*Background concentrations where applicable. Values presented in BOLD exceed ECMC Table 915-1 Regulatory Limits and applicable Local Clean-up Levels. Values presented with asterisk (*) exceed ECMC Table 915-1 GSSLs, only. **Achievable practical quantitative limits for Hexavalent Chromium in soils is in the range of 0.1 to 1 mg/kg. | | | | | | | | | | |





ATTACHMENT A

Photo Log

Frank CC #7-19
API # 05-123-25351
Remediation # 32307

Closure Assessment

February 2024

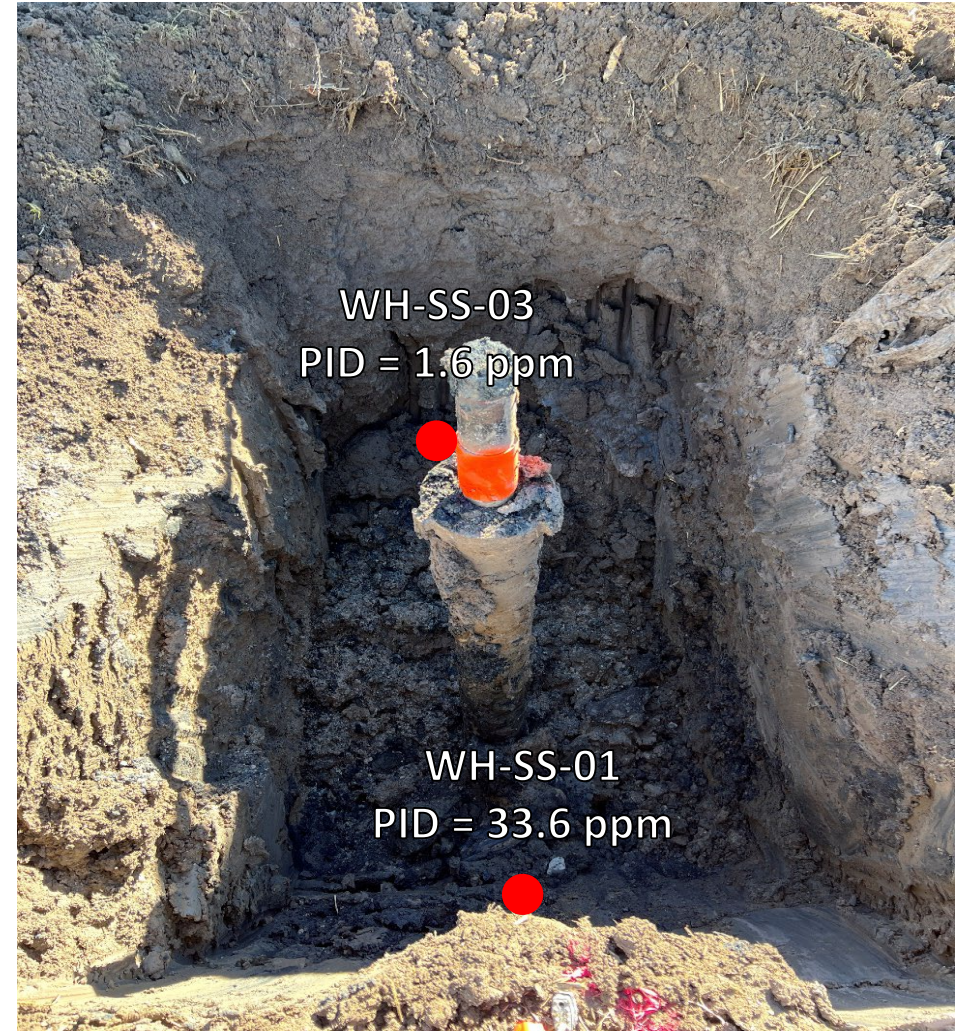


Wellhead Surface – 02/22/24



Looking north

Black petroleum hydrocarbon staining observed. No odor observed



Looking south

Black petroleum hydrocarbon staining observed. No odor observed

Wellhead Surface – 02/22/24



Looking north

Site in good condition – no petroleum hydrocarbon staining or odor observed on surface around wellhead



Looking east

Site in good condition – no petroleum hydrocarbon staining or odor observed on surface around wellhead

Wellhead Surface – 02/22/24



Looking south

Site in good condition – no petroleum hydrocarbon staining or odor observed on surface around wellhead



Looking west

Site in good condition – no petroleum hydrocarbon staining or odor observed on surface around wellhead



ATTACHMENT B

Laboratory Analytical Report



March 13, 2024

Eagle Environmental Consulting, LLC

Andrew Newberry

8000 W 44th Ave

Wheat Ridge CO 80033

Project Name - Noble - Frank CC #7-19

Project Number - [none]

Attached are your analytical results for Noble - Frank CC #7-19 received by Origins Laboratory, Inc. February 22, 2024. This project is associated with Origins project number Y402568-01.

The analytical results in the following report were analyzed under the guidelines of EPA Methods. These methods are identified as follows; "SW" are defined in SW-846, "EPA" are defined in 40CFR part 136 and "SM" are defined in the most current revision of Standard Methods For the Examination of Water and Wastewater.

The analytical results apply specifically to the samples and analyses specified per the attached Chain of Custody. As such, this report shall not be reproduced except in full, without the written approval of Origin's laboratory.

Unless otherwise noted, the analytical results for all soil samples are reported on a wet weight basis. All analytical analyses were performed under NELAP guidelines unless noted by a data qualifier.

Any holding time exceedances, deviations from the method specifications or deviations from Origins Laboratory's Standard Operating Procedures are outlined in the case narrative.

Thank you for selecting Origins for your analytical needs. Please contact us with any questions concerning this report, or if we can help with anything at all.

Origins Laboratory, Inc.
303.433.1322
o-squad@oelabinc.com



Eagle Environmental Consulting, LLC
8000 W 44th Ave
Wheat Ridge CO 80033

Andrew Newberry
Project Number: [none]
Project: Noble - Frank CC #7-19

CROSS REFERENCE REPORT

| Sample ID | Laboratory ID | Matrix | Date Sampled | Date Received |
|------------------|---------------|--------|-------------------------|------------------|
| WH-SS-01@6' | Y402568-01 | Soil | February 22, 2024 14:06 | 02/22/2024 17:01 |
| WH-SS-02@6' | Y402568-02 | Soil | February 22, 2024 14:08 | 02/22/2024 17:01 |
| WH-SS-03@6' | Y402568-03 | Soil | February 22, 2024 14:10 | 02/22/2024 17:01 |
| WH-SS-04@6' | Y402568-04 | Soil | February 22, 2024 14:12 | 02/22/2024 17:01 |
| WH-FS-01@7' | Y402568-05 | Soil | February 22, 2024 14:14 | 02/22/2024 17:01 |
| Background-01@2' | Y402568-06 | Soil | February 22, 2024 14:16 | 02/22/2024 17:01 |

Origins Laboratory, Inc.



The results in this report apply to the samples analyzed in accordance with the chain of custody document. This analytical report must be reproduced in its entirety.

Eagle Environmental Consulting, LLC
 8000 W 44th Ave
 Wheat Ridge CO 80033

Andrew Newberry
 Project Number: [none]
 Project: Noble - Frank CC #7-19

www.originslaboratory.com

Y402568 page 1 of 1


ORIGINS
 LABORATORY, INC

Client: Eagle Environmental Consulting
 Address: 8000 W 44th Ave
Wheat Ridge, Co 80033
 Telephone Number: 303-433-0479
 Email Address: ANewberry@eagle-enviro.com

Project Manager: Andrew Newberry
 Project Name: Frank CC #7-19
 Project Number:
 Samples Collected By: GJK

| Sample ID Description | Date Sampled | Time Sampled | # of Containers | Preservative | | | | Matrix | | | Analysis | | | | Sample Instructions | |
|-------------------------------------|----------------------|-------------------|-----------------|---------------------------------|----------------------|-------------------|-------|---------------------------------|----------------------|-------------------|------------|----------------------------------------------------------------------------------------------------------------------------------------------------------------------------------------------|----|--------------------------------|---------------------|--------------------------------|
| | | | | Unpreserved | HCl | HNO ₃ | Other | Groundwater | Soil | Air Summa | Canister # | Other | As | As ₂ S ₃ | | As ₂ O ₃ |
| WH-SS-0106 | 2/22/24 | 1406 | 3 | X | | | | X | | | | | X | X | X | EC/SAR, pH by 1 |
| WH-SS-0306 | | 1408 | | | | | | | | | | | | | | Saturated paste free 2 |
| WH-SS-0306 | | 1410 | | | | | | | | | | | | | | 3 |
| WH-SS-0406 | | 1412 | | | | | | | | | | | | | | 4 |
| WH-FS-0107 | | 1414 | | | | | | | | | | | | | | 5 |
| Background 03 | | 1416 | | | | | | | | | | | | | | 6 |
| | | | | | | | | | | | | | | | | 7 |
| | | | | | | | | | | | | | | | | 8 |
| | | | | | | | | | | | | | | | | 9 |
| | | | | | | | | | | | | | | | | 10 |
| Relinquished by: <u>[Signature]</u> | Date: <u>2/22/24</u> | Time: <u>1701</u> | | Received By: <u>[Signature]</u> | Date: <u>2/22/24</u> | Time: <u>1701</u> | | Received By: <u>[Signature]</u> | Date: <u>2/22/24</u> | Time: <u>1701</u> | | Turnaround Time: <input type="checkbox"/> Same Day <input type="checkbox"/> 24 Hr <input type="checkbox"/> 48 Hr <input checked="" type="checkbox"/> 72 Hr <input type="checkbox"/> Standard | | | | |
| Relinquished by: <u>[Signature]</u> | Date: <u>2/22/24</u> | Time: <u>1701</u> | | Received By: <u>[Signature]</u> | Date: <u>2/22/24</u> | Time: <u>1701</u> | | Received By: <u>[Signature]</u> | Date: <u>2/22/24</u> | Time: <u>1701</u> | | Turnaround Time: <input type="checkbox"/> Same Day <input type="checkbox"/> 24 Hr <input type="checkbox"/> 48 Hr <input checked="" type="checkbox"/> 72 Hr <input type="checkbox"/> Standard | | | | |

Date Results Needed: Noble
 Temp Received: 8.11 to 30.4

Origins Laboratory, Inc.


The results in this report apply to the samples analyzed in accordance with the chain of custody document. This analytical report must be reproduced in its entirety.

Eagle Environmental Consulting, LLC
 8000 W 44th Ave
 Wheat Ridge CO 80033

Andrew Newberry
 Project Number: [none]
 Project: Noble - Frank CC #7-19

Origins Laboratory

F-012207-01-R1
 Effective Date: 01/09/12

Sample Receipt Checklist

Origins Work Order: 7402568

Client: Eagle

Client Project ID: Frank CC #7-19

Checklist Completed by: JBN/EAS

Shipped Via: HD
 (UPS, FedEx, Hand Delivered, Pick-up, etc.)

Date/time completed: 2/23/24

Airbill #: N/A

Matrix(s) Received: (Check all that apply): Soil/Solid Water Other: _____ (Describe)

Cooler Number/Temperature: 1, 0 °C / _____ °C / _____ °C / _____ °C

Thermometer ID: 1007

| Requirement Description | Yes | No | N/A | Comments (if any) |
|------------------------------------------------------------------------------------------------------------------------------------------------------------------------------------------------------------------------------------------------------------------------------------------------------------------------------------------------------------|-----|----|-----|-------------------|
| If samples require cooling, was the temperature between 0°C to ≤ 6°C ^{(1)?} | / | | | |
| Is there ice present (document if blue ice is used) | / | | | |
| Are custody seals present on cooler? (if so, document in comments if they are signed and dated, broken or intact) | | / | | |
| Are custody seals present on each sample container? (if so, document in comments if they are signed and dated, broken or intact) | | / | | |
| Were all samples received intact ^{(1)?} | / | | | |
| Was adequate sample volume provided ^{(1)?} | / | | | |
| Are short holding time analytes or samples with HTs due within 48 hours present ^{(1)?} | | / | | |
| Is a chain-of-custody (COC) present and filled out completely ^{(1)?} | / | | | |
| Does the COC agree with the number and type of sample bottles received ^{(1)?} | / | | | |
| Do the sample IDs on the bottle labels match the COC ^{(1)?} | / | | | |
| Is the COC properly relinquished by the client with date and time recorded ^{(1)?} | / | | | |
| For volatiles in water – is there headspace (> ¼ inch bubble) present? If yes, contact client and note in narrative. | | | / | |
| Are samples preserved that require preservation and was it checked ^{(1)?} (note ID of confirmation instrument used in comments) / (preservation is not confirmed for subcontracted analyses in order to insure sample integrity)/(pH <2 for samples preserved with HNO3, HCL, H2SO4) / (pH >10 for samples preserved with NaAsO2+NaOH, ZnAc+NaOH) | | | / | |
| Additional Comments (if any): | | | | |

⁽¹⁾If NO, then contact the client before proceeding with analysis and note date/time and person contacted as well as the corrective action to in the additional comments (above) and the case narrative.

Reviewed by (Project Manager) [Signature]

2/26/24
 Date/Time Reviewed

Origins Laboratory, Inc.

[Signature]

The results in this report apply to the samples analyzed in accordance with the chain of custody document. This analytical report must be reproduced in its entirety.

Eagle Environmental Consulting, LLC
 8000 W 44th Ave
 Wheat Ridge CO 80033

Andrew Newberry
 Project Number: [none]
 Project: Noble - Frank CC #7-19

WH-SS-01@6'
2/22/2024 2:06:00PM

| Analyte | Result | Min Detection Limit | Reporting Limit | Units | Dilution | Batch | Prepared | Analyzed | Notes |
|---------|--------|---------------------|-----------------|-------|----------|-------|----------|----------|-------|
|---------|--------|---------------------|-----------------|-------|----------|-------|----------|----------|-------|

Origins Laboratory, Inc.
Y402568-01 (Soil)

Boron (DTPA Sorbitol)

| | | | | | | | | | |
|-------|------|--|--------|------|---|---------|------------|------------|--|
| Boron | 1.01 | | 0.0998 | mg/L | 1 | B4B2611 | 02/26/2024 | 03/01/2024 | |
|-------|------|--|--------|------|---|---------|------------|------------|--|

DRO/ORO by EPA 8015D

| | | | | | | | | | |
|-----------------------------------|----|--|------|-------|---|---------|------------|------------|---|
| Diesel (C10-C28) | ND | | 25.0 | mg/kg | 1 | B4B2701 | 02/27/2024 | 03/01/2024 | U |
| Residual Range Organics (C28-C40) | ND | | 100 | " | " | " | " | " | U |

| | | | | | | | | | |
|------------------------|--------|--|--------|--|--|---|---|---|--|
| Surrogate: o-Terphenyl | 62.4 % | | 50-150 | | | " | " | " | |
|------------------------|--------|--|--------|--|--|---|---|---|--|

GBTEX+TMBs by 8260D

| | | | | | | | | | |
|-----------------------------|---------|--|---------|-------|---|---------|------------|------------|---|
| 1,2,4-Trimethylbenzene | 0.0194 | | 0.00200 | mg/kg | 1 | B4B2411 | 02/24/2024 | 02/25/2024 | |
| 1,3,5-Trimethylbenzene | 0.00892 | | 0.00200 | " | " | " | " | " | |
| Benzene | 0.00462 | | 0.00200 | " | " | " | " | " | |
| Ethylbenzene | 0.00952 | | 0.00200 | " | " | " | " | " | |
| Naphthalene | ND | | 0.00380 | " | " | " | " | " | U |
| Toluene | 0.0426 | | 0.00200 | " | " | " | " | " | |
| Xylenes, total | 0.117 | | 0.00200 | " | " | " | " | " | |
| Gasoline Range Hydrocarbons | 0.719 | | 0.200 | " | " | " | " | " | |

| | | | | | | | | | |
|----------------------------------|-------|--|--------|--|--|---|---|---|--|
| Surrogate: 1,2-Dichloroethane-d4 | 110 % | | 70-130 | | | " | " | " | |
|----------------------------------|-------|--|--------|--|--|---|---|---|--|

Origins Laboratory, Inc.



The results in this report apply to the samples analyzed in accordance with the chain of custody document. This analytical report must be reproduced in its entirety.

Eagle Environmental Consulting, LLC
 8000 W 44th Ave
 Wheat Ridge CO 80033

Andrew Newberry
 Project Number: [none]
 Project: Noble - Frank CC #7-19

WH-SS-01@6'
2/22/2024 2:06:00PM

| Analyte | Result | Min Detection Limit | Reporting Limit | Units | Dilution | Batch | Prepared | Analyzed | Notes |
|---------|--------|---------------------|-----------------|-------|----------|-------|----------|----------|-------|
|---------|--------|---------------------|-----------------|-------|----------|-------|----------|----------|-------|

Origins Laboratory, Inc.
Y402568-01 (Soil)

GBTEX+TMBs by 8260D

| | | | | | | | | | |
|---------------------------------|--------|--|--------|--|--|-------------|------------|------------|--|
| Surrogate: Toluene-d8 | 98.5 % | | 70-130 | | | B4B24 11 | 02/24/2024 | 02/25/2024 | |
| Surrogate: 4-Bromofluorobenzene | 98.1 % | | 70-130 | | | " | " | " | |

Metals by Saturated Paste by EPA 6010

| | | | | | | | | | |
|-----------|------|-------|-------|----|--------|---|------------|------------|--|
| Calcium | 11.2 | 0.499 | meq/L | 10 | [CALC] | | 02/26/2024 | 02/29/2024 | |
| Magnesium | 4.66 | 0.823 | " | " | " | " | " | " | |
| Sodium | 12.7 | 0.435 | " | " | " | " | " | " | |

PAH by EPA 8270E

| | | | | | | | | | |
|-------------------------|-------|-------|-------|---|---------|---|------------|------------|---|
| 1-Methylnaphthalene | 0.012 | 0.002 | mg/kg | 1 | B4B2822 | | 02/28/2024 | 02/29/2024 | |
| 2-Methylnaphthalene | 0.026 | 0.002 | " | " | " | " | " | " | |
| Acenaphthene | ND | 0.020 | " | " | " | " | " | " | U |
| Anthracene | ND | 0.020 | " | " | " | " | " | " | U |
| Benzo (a) anthracene | ND | 0.005 | " | " | " | " | " | " | U |
| Benzo (a) pyrene | ND | 0.020 | " | " | " | " | " | " | U |
| Benzo (b) fluoranthene | ND | 0.020 | " | " | " | " | " | " | U |
| Benzo (k) fluoranthene | ND | 0.020 | " | " | " | " | " | " | U |
| Chrysene | ND | 0.020 | " | " | " | " | " | " | U |
| Dibenz (a,h) anthracene | ND | 0.020 | " | " | " | " | " | " | U |
| Fluoranthene | ND | 0.020 | " | " | " | " | " | " | U |

Origins Laboratory, Inc.



The results in this report apply to the samples analyzed in accordance with the chain of custody document. This analytical report must be reproduced in its entirety.

Eagle Environmental Consulting, LLC
 8000 W 44th Ave
 Wheat Ridge CO 80033

Andrew Newberry
 Project Number: [none]
 Project: Noble - Frank CC #7-19

WH-SS-01@6'
2/22/2024 2:06:00PM

| Analyte | Result | Min Detection Limit | Reporting Limit | Units | Dilution | Batch | Prepared | Analyzed | Notes |
|---------|--------|---------------------|-----------------|-------|----------|-------|----------|----------|-------|
|---------|--------|---------------------|-----------------|-------|----------|-------|----------|----------|-------|

Origins Laboratory, Inc.
Y402568-01 (Soil)

PAH by EPA 8270E

| | | | | | | | | | |
|--------------------------|----|--|-------|-------|---|---------|------------|------------|---|
| Fluorene | ND | | 0.020 | mg/kg | 1 | B4B2822 | 02/28/2024 | 02/29/2024 | U |
| Indeno (1,2,3-cd) pyrene | ND | | 0.020 | " | " | " | " | " | U |
| Pyrene | ND | | 0.020 | " | " | " | " | " | U |

| | | | | | | | | | |
|---------------------------------|--------|--|--------|--|--|---|---|---|--|
| Surrogate: Fluorene-d10 | 100 % | | 60-130 | | | " | " | " | |
| Surrogate: Anthracene-d10 | 94.0 % | | 60-130 | | | " | " | " | |
| Surrogate: Pyrene-d10 | 101 % | | 60-130 | | | " | " | " | |
| Surrogate: Benzo (a) pyrene-d12 | 102 % | | 60-130 | | | " | " | " | |

pH in Soil by 9045D

| | | | | | | | | | |
|----|------|--|--|----------|---|---------|------------|------------|--|
| pH | 8.21 | | | pH Units | 1 | B4B2614 | 02/26/2024 | 02/27/2024 | |
|----|------|--|--|----------|---|---------|------------|------------|--|

SAR by 20B Saturated Paste

| | | | | | | | | | |
|-----|------|--|--------|-----|---|---------|------------|------------|--|
| SAR | 4.51 | | 0.0100 | SAR | 1 | B4B2605 | 02/26/2024 | 02/29/2024 | |
|-----|------|--|--------|-----|---|---------|------------|------------|--|

Specific Conductance Mod. 9050A

| | | | | | | | | | |
|---------------------------|------|--|---------|----------|---|---------|------------|------------|--|
| Specific Conductance (EC) | 2.32 | | 0.00500 | mmhos/cm | 1 | B4B2614 | 02/26/2024 | 02/27/2024 | |
|---------------------------|------|--|---------|----------|---|---------|------------|------------|--|

Table 915 metals by EPA 6020B

| | | | | | | | | | |
|---------|------|--|-------|-------|----|---------|------------|------------|--|
| Arsenic | 3.45 | | 0.289 | mg/kg | 10 | B4B2349 | 02/23/2024 | 03/10/2024 | |
|---------|------|--|-------|-------|----|---------|------------|------------|--|

Origins Laboratory, Inc.



The results in this report apply to the samples analyzed in accordance with the chain of custody document. This analytical report must be reproduced in its entirety.

Eagle Environmental Consulting, LLC
 8000 W 44th Ave
 Wheat Ridge CO 80033

Andrew Newberry
 Project Number: [none]
 Project: Noble - Frank CC #7-19

WH-SS-01@6'
2/22/2024 2:06:00PM

| Analyte | Result | Min Detection Limit | Reporting Limit | Units | Dilution | Batch | Prepared | Analyzed | Notes |
|---------|--------|---------------------|-----------------|-------|----------|-------|----------|----------|-------|
|---------|--------|---------------------|-----------------|-------|----------|-------|----------|----------|-------|

Origins Laboratory, Inc.
Y402568-01 (Soil)

Table 915 metals by EPA 6020B

| | | | | | | | | | |
|----------|-------|--|--------|-------|----|---------|------------|------------|--|
| Barium | 130 | | 9.96 | mg/kg | 10 | B4B2349 | 02/23/2024 | 03/10/2024 | |
| Cadmium | 0.277 | | 0.0996 | " | " | " | " | " | |
| Copper | 15.0 | | 9.96 | " | " | " | " | " | |
| Lead | 18.8 | | 0.996 | " | " | " | " | " | |
| Nickel | 12.6 | | 0.996 | " | " | " | " | " | |
| Selenium | 0.409 | | 0.259 | " | " | " | " | " | |
| Silver | ND | | 0.0996 | " | " | " | " | " | |
| Zinc | 82.6 | | 36.8 | " | " | " | " | " | |

Total Metals by 7196A

| | | | | | | | | | |
|----------------------|----|-------|-----|-------|---|---------|------------|------------|--|
| Chromium, Hexavalent | ND | 0.244 | 0.5 | mg/Kg | 1 | L737330 | 02/22/2024 | 03/08/2024 | |
|----------------------|----|-------|-----|-------|---|---------|------------|------------|--|

Origins Laboratory, Inc.



The results in this report apply to the samples analyzed in accordance with the chain of custody document. This analytical report must be reproduced in its entirety.

Eagle Environmental Consulting, LLC
 8000 W 44th Ave
 Wheat Ridge CO 80033

Andrew Newberry
 Project Number: [none]
 Project: Noble - Frank CC #7-19

WH-SS-02@6'
2/22/2024 2:08:00PM

| Analyte | Result | Min Detection Limit | Reporting Limit | Units | Dilution | Batch | Prepared | Analyzed | Notes |
|---------|--------|---------------------|-----------------|-------|----------|-------|----------|----------|-------|
|---------|--------|---------------------|-----------------|-------|----------|-------|----------|----------|-------|

Origins Laboratory, Inc.
Y402568-02 (Soil)

Boron (DTPA Sorbitol)

| | | | | | | | | | |
|-------|------|--|--------|------|---|---------|------------|------------|--|
| Boron | 1.07 | | 0.0983 | mg/L | 1 | B4B2611 | 02/26/2024 | 03/01/2024 | |
|-------|------|--|--------|------|---|---------|------------|------------|--|

DRO/ORO by EPA 8015D

| | | | | | | | | | |
|-----------------------------------|----|--|------|-------|---|---------|------------|------------|---|
| Diesel (C10-C28) | ND | | 25.0 | mg/kg | 1 | B4B2701 | 02/27/2024 | 03/01/2024 | U |
| Residual Range Organics (C28-C40) | ND | | 100 | " | " | " | " | " | U |

| | | | | | | | | | |
|------------------------|--------|--|--------|--|--|---|---|---|--|
| Surrogate: o-Terphenyl | 66.9 % | | 50-150 | | | " | " | " | |
|------------------------|--------|--|--------|--|--|---|---|---|--|

GBTEX+TMBs by 8260D

| | | | | | | | | | |
|-----------------------------|---------|--|---------|-------|---|---------|------------|------------|---|
| 1,2,4-Trimethylbenzene | 0.00356 | | 0.00200 | mg/kg | 1 | B4B2411 | 02/24/2024 | 02/25/2024 | |
| 1,3,5-Trimethylbenzene | 0.00206 | | 0.00200 | " | " | " | " | " | |
| Benzene | ND | | 0.00200 | " | " | " | " | " | U |
| Ethylbenzene | ND | | 0.00200 | " | " | " | " | " | U |
| Naphthalene | ND | | 0.00380 | " | " | " | " | " | U |
| Toluene | 0.00358 | | 0.00200 | " | " | " | " | " | |
| Xylenes, total | 0.0107 | | 0.00200 | " | " | " | " | " | |
| Gasoline Range Hydrocarbons | ND | | 0.200 | " | " | " | " | " | U |

| | | | | | | | | | |
|----------------------------------|-------|--|--------|--|--|---|---|---|--|
| Surrogate: 1,2-Dichloroethane-d4 | 111 % | | 70-130 | | | " | " | " | |
|----------------------------------|-------|--|--------|--|--|---|---|---|--|

Origins Laboratory, Inc.



The results in this report apply to the samples analyzed in accordance with the chain of custody document. This analytical report must be reproduced in its entirety.

Eagle Environmental Consulting, LLC
 8000 W 44th Ave
 Wheat Ridge CO 80033

Andrew Newberry
 Project Number: [none]
 Project: Noble - Frank CC #7-19

WH-SS-02@6'
2/22/2024 2:08:00PM

| Analyte | Result | Min Detection Limit | Reporting Limit | Units | Dilution | Batch | Prepared | Analyzed | Notes |
|---------|--------|---------------------|-----------------|-------|----------|-------|----------|----------|-------|
|---------|--------|---------------------|-----------------|-------|----------|-------|----------|----------|-------|

Origins Laboratory, Inc.
Y402568-02 (Soil)

GBTEX+TMBs by 8260D

| | | | | | | | | | |
|---------------------------------|--------|--|--------|--|--|-------------|------------|------------|--|
| Surrogate: Toluene-d8 | 97.4 % | | 70-130 | | | B4B24 11 | 02/24/2024 | 02/25/2024 | |
| Surrogate: 4-Bromofluorobenzene | 98.9 % | | 70-130 | | | " | " | " | |

Metals by Saturated Paste by EPA 6010

| | | | | | | | | | |
|-----------|------|-------|-------|----|--------|---|------------|------------|--|
| Calcium | 2.60 | 0.499 | meq/L | 10 | [CALC] | | 02/26/2024 | 02/29/2024 | |
| Magnesium | 1.26 | 0.823 | " | " | " | " | " | " | |
| Sodium | 9.58 | 0.435 | " | " | " | " | " | " | |

PAH by EPA 8270E

| | | | | | | | | | |
|-------------------------|-------|-------|-------|---|---------|---|------------|------------|---|
| 1-Methylnaphthalene | 0.011 | 0.002 | mg/kg | 1 | B4B2822 | | 02/28/2024 | 02/29/2024 | |
| 2-Methylnaphthalene | 0.021 | 0.002 | " | " | " | " | " | " | |
| Acenaphthene | ND | 0.020 | " | " | " | " | " | " | U |
| Anthracene | ND | 0.020 | " | " | " | " | " | " | U |
| Benzo (a) anthracene | ND | 0.005 | " | " | " | " | " | " | U |
| Benzo (a) pyrene | ND | 0.020 | " | " | " | " | " | " | U |
| Benzo (b) fluoranthene | ND | 0.020 | " | " | " | " | " | " | U |
| Benzo (k) fluoranthene | ND | 0.020 | " | " | " | " | " | " | U |
| Chrysene | ND | 0.020 | " | " | " | " | " | " | U |
| Dibenz (a,h) anthracene | ND | 0.020 | " | " | " | " | " | " | U |
| Fluoranthene | ND | 0.020 | " | " | " | " | " | " | U |

Origins Laboratory, Inc.



The results in this report apply to the samples analyzed in accordance with the chain of custody document. This analytical report must be reproduced in its entirety.

Eagle Environmental Consulting, LLC
 8000 W 44th Ave
 Wheat Ridge CO 80033

Andrew Newberry
 Project Number: [none]
 Project: Noble - Frank CC #7-19

WH-SS-02@6'
2/22/2024 2:08:00PM

| Analyte | Result | Min Detection Limit | Reporting Limit | Units | Dilution | Batch | Prepared | Analyzed | Notes |
|---------|--------|---------------------|-----------------|-------|----------|-------|----------|----------|-------|
|---------|--------|---------------------|-----------------|-------|----------|-------|----------|----------|-------|

Origins Laboratory, Inc.
Y402568-02 (Soil)

PAH by EPA 8270E

| | | | | | | | | | |
|--------------------------|----|--|-------|-------|---|---------|------------|------------|---|
| Fluorene | ND | | 0.020 | mg/kg | 1 | B4B2822 | 02/28/2024 | 02/29/2024 | U |
| Indeno (1,2,3-cd) pyrene | ND | | 0.020 | " | " | " | " | " | U |
| Pyrene | ND | | 0.020 | " | " | " | " | " | U |

| | | | | | | | | | |
|---------------------------------|--------|--|--------|--|--|---|---|---|--|
| Surrogate: Fluorene-d10 | 101 % | | 60-130 | | | " | " | " | |
| Surrogate: Anthracene-d10 | 94.2 % | | 60-130 | | | " | " | " | |
| Surrogate: Pyrene-d10 | 101 % | | 60-130 | | | " | " | " | |
| Surrogate: Benzo (a) pyrene-d12 | 104 % | | 60-130 | | | " | " | " | |

pH in Soil by 9045D

| | | | | | | | | | |
|----|------|--|--|----------|---|---------|------------|------------|--|
| pH | 8.30 | | | pH Units | 1 | B4B2614 | 02/26/2024 | 02/27/2024 | |
|----|------|--|--|----------|---|---------|------------|------------|--|

SAR by 20B Saturated Paste

| | | | | | | | | | |
|-----|------|--|--------|-----|---|---------|------------|------------|--|
| SAR | 6.89 | | 0.0100 | SAR | 1 | B4B2605 | 02/26/2024 | 02/29/2024 | |
|-----|------|--|--------|-----|---|---------|------------|------------|--|

Specific Conductance Mod. 9050A

| | | | | | | | | | |
|---------------------------|------|--|---------|----------|---|---------|------------|------------|--|
| Specific Conductance (EC) | 1.38 | | 0.00500 | mmhos/cm | 1 | B4B2614 | 02/26/2024 | 02/27/2024 | |
|---------------------------|------|--|---------|----------|---|---------|------------|------------|--|

Table 915 metals by EPA 6020B

| | | | | | | | | | |
|---------|------|--|-------|-------|----|---------|------------|------------|--|
| Arsenic | 4.26 | | 0.260 | mg/kg | 10 | B4B2349 | 02/23/2024 | 03/10/2024 | |
|---------|------|--|-------|-------|----|---------|------------|------------|--|

Origins Laboratory, Inc.



The results in this report apply to the samples analyzed in accordance with the chain of custody document. This analytical report must be reproduced in its entirety.

Eagle Environmental Consulting, LLC
 8000 W 44th Ave
 Wheat Ridge CO 80033

Andrew Newberry
 Project Number: [none]
 Project: Noble - Frank CC #7-19

WH-SS-02@6'
2/22/2024 2:08:00PM

| Analyte | Result | Min Detection Limit | Reporting Limit | Units | Dilution | Batch | Prepared | Analyzed | Notes |
|---------|--------|---------------------|-----------------|-------|----------|-------|----------|----------|-------|
|---------|--------|---------------------|-----------------|-------|----------|-------|----------|----------|-------|

Origins Laboratory, Inc.
Y402568-02 (Soil)

Table 915 metals by EPA 6020B

| | | | | | | | | | |
|----------|-------|--|--------|-------|----|---------|------------|------------|--|
| Barium | 207 | | 8.97 | mg/kg | 10 | B4B2349 | 02/23/2024 | 03/10/2024 | |
| Cadmium | 0.299 | | 0.0897 | " | " | " | " | " | |
| Copper | 17.2 | | 8.97 | " | " | " | " | " | |
| Lead | 30.1 | | 0.897 | " | " | " | " | " | |
| Nickel | 13.8 | | 0.897 | " | " | " | " | " | |
| Selenium | 0.440 | | 0.233 | " | " | " | " | " | |
| Silver | 0.173 | | 0.0897 | " | " | " | " | " | |
| Zinc | 91.6 | | 33.2 | " | " | " | " | " | |

Total Metals by 7196A

| | | | | | | | | | |
|----------------------|----|-------|-----|-------|---|---------|------------|------------|--|
| Chromium, Hexavalent | ND | 0.244 | 0.5 | mg/Kg | 1 | L737330 | 02/22/2024 | 03/08/2024 | |
|----------------------|----|-------|-----|-------|---|---------|------------|------------|--|

Origins Laboratory, Inc.



The results in this report apply to the samples analyzed in accordance with the chain of custody document. This analytical report must be reproduced in its entirety.

Eagle Environmental Consulting, LLC
 8000 W 44th Ave
 Wheat Ridge CO 80033

Andrew Newberry
 Project Number: [none]
 Project: Noble - Frank CC #7-19

WH-SS-03@6'
2/22/2024 2:10:00PM

| Analyte | Result | Min Detection Limit | Reporting Limit | Units | Dilution | Batch | Prepared | Analyzed | Notes |
|---------|--------|---------------------|-----------------|-------|----------|-------|----------|----------|-------|
|---------|--------|---------------------|-----------------|-------|----------|-------|----------|----------|-------|

Origins Laboratory, Inc.
Y402568-03 (Soil)

Boron (DTPA Sorbitol)

| | | | | | | | | | |
|-------|-------|--|-------|------|---|---------|------------|------------|--|
| Boron | 0.825 | | 0.100 | mg/L | 1 | B4B2611 | 02/26/2024 | 03/01/2024 | |
|-------|-------|--|-------|------|---|---------|------------|------------|--|

DRO/ORO by EPA 8015D

| | | | | | | | | | |
|-----------------------------------|----|--|------|-------|---|---------|------------|------------|---|
| Diesel (C10-C28) | ND | | 25.0 | mg/kg | 1 | B4B2701 | 02/27/2024 | 03/01/2024 | U |
| Residual Range Organics (C28-C40) | ND | | 100 | " | " | " | " | " | U |

| | | | | | | | | | |
|------------------------|--------|--|--------|--|--|---|---|---|--|
| Surrogate: o-Terphenyl | 64.6 % | | 50-150 | | | " | " | " | |
|------------------------|--------|--|--------|--|--|---|---|---|--|

GBTEX+TMBs by 8260D

| | | | | | | | | | |
|-----------------------------|----|--|---------|-------|---|---------|------------|------------|---|
| 1,2,4-Trimethylbenzene | ND | | 0.00200 | mg/kg | 1 | B4B2411 | 02/24/2024 | 02/25/2024 | U |
| 1,3,5-Trimethylbenzene | ND | | 0.00200 | " | " | " | " | " | U |
| Benzene | ND | | 0.00200 | " | " | " | " | " | U |
| Ethylbenzene | ND | | 0.00200 | " | " | " | " | " | U |
| Naphthalene | ND | | 0.00380 | " | " | " | " | " | U |
| Toluene | ND | | 0.00200 | " | " | " | " | " | U |
| Xylenes, total | ND | | 0.00200 | " | " | " | " | " | U |
| Gasoline Range Hydrocarbons | ND | | 0.200 | " | " | " | " | " | U |

Origins Laboratory, Inc.



The results in this report apply to the samples analyzed in accordance with the chain of custody document. This analytical report must be reproduced in its entirety.

Eagle Environmental Consulting, LLC
 8000 W 44th Ave
 Wheat Ridge CO 80033

Andrew Newberry
 Project Number: [none]
 Project: Noble - Frank CC #7-19

WH-SS-03@6'
2/22/2024 2:10:00PM

| Analyte | Result | Min Detection Limit | Reporting Limit | Units | Dilution | Batch | Prepared | Analyzed | Notes |
|---------|--------|---------------------|-----------------|-------|----------|-------|----------|----------|-------|
|---------|--------|---------------------|-----------------|-------|----------|-------|----------|----------|-------|

Origins Laboratory, Inc.
Y402568-03 (Soil)

GBTEX+TMBs by 8260D

| | | | | | | | | | |
|----------------------------------|--------|--|--------|--|--|-------------|------------|------------|--|
| Surrogate: 1,2-Dichloroethane-d4 | 107 % | | 70-130 | | | B4B24 11 | 02/24/2024 | 02/25/2024 | |
| Surrogate: Toluene-d8 | 97.8 % | | 70-130 | | | " | " | " | |
| Surrogate: 4-Bromofluorobenzene | 100 % | | 70-130 | | | " | " | " | |

Metals by Saturated Paste by EPA 6010

| | | | | | | | | | |
|-----------|------|--|-------|-------|----|--------|------------|------------|--|
| Calcium | 4.56 | | 0.499 | meq/L | 10 | [CALC] | 02/26/2024 | 02/29/2024 | |
| Magnesium | 2.32 | | 0.823 | " | " | " | " | " | |
| Sodium | 3.51 | | 0.435 | " | " | " | " | " | |

PAH by EPA 8270E

| | | | | | | | | | |
|-------------------------|----|--|-------|-------|---|---------|------------|------------|---|
| 1-Methylnaphthalene | ND | | 0.002 | mg/kg | 1 | B4B2822 | 02/28/2024 | 02/29/2024 | U |
| 2-Methylnaphthalene | ND | | 0.002 | " | " | " | " | " | U |
| Acenaphthene | ND | | 0.020 | " | " | " | " | " | U |
| Anthracene | ND | | 0.020 | " | " | " | " | " | U |
| Benzo (a) anthracene | ND | | 0.005 | " | " | " | " | " | U |
| Benzo (a) pyrene | ND | | 0.020 | " | " | " | " | " | U |
| Benzo (b) fluoranthene | ND | | 0.020 | " | " | " | " | " | U |
| Benzo (k) fluoranthene | ND | | 0.020 | " | " | " | " | " | U |
| Chrysene | ND | | 0.020 | " | " | " | " | " | U |
| Dibenz (a,h) anthracene | ND | | 0.020 | " | " | " | " | " | U |

Origins Laboratory, Inc.



The results in this report apply to the samples analyzed in accordance with the chain of custody document. This analytical report must be reproduced in its entirety.

Eagle Environmental Consulting, LLC
 8000 W 44th Ave
 Wheat Ridge CO 80033

Andrew Newberry
 Project Number: [none]
 Project: Noble - Frank CC #7-19

WH-SS-03@6'
2/22/2024 2:10:00PM

| Analyte | Result | Min Detection Limit | Reporting Limit | Units | Dilution | Batch | Prepared | Analyzed | Notes |
|---------|--------|---------------------|-----------------|-------|----------|-------|----------|----------|-------|
|---------|--------|---------------------|-----------------|-------|----------|-------|----------|----------|-------|

Origins Laboratory, Inc.
Y402568-03 (Soil)

PAH by EPA 8270E

| | | | | | | | | | |
|--------------------------|----|--|-------|-------|---|---------|------------|------------|---|
| Fluoranthene | ND | | 0.020 | mg/kg | 1 | B4B2822 | 02/28/2024 | 02/29/2024 | U |
| Fluorene | ND | | 0.020 | " | " | " | " | " | U |
| Indeno (1,2,3-cd) pyrene | ND | | 0.020 | " | " | " | " | " | U |
| Pyrene | ND | | 0.020 | " | " | " | " | " | U |

| | | | | | | | | | |
|---------------------------------|--------|--|--------|--|--|---|---|---|--|
| Surrogate: Fluorene-d10 | 100 % | | 60-130 | | | " | " | " | |
| Surrogate: Anthracene-d10 | 93.7 % | | 60-130 | | | " | " | " | |
| Surrogate: Pyrene-d10 | 103 % | | 60-130 | | | " | " | " | |
| Surrogate: Benzo (a) pyrene-d12 | 104 % | | 60-130 | | | " | " | " | |

pH in Soil by 9045D

| | | | | | | | | | |
|----|------|--|--|----------|---|---------|------------|------------|--|
| pH | 8.09 | | | pH Units | 1 | B4B2614 | 02/26/2024 | 02/27/2024 | |
|----|------|--|--|----------|---|---------|------------|------------|--|

SAR by 20B Saturated Paste

| | | | | | | | | | |
|-----|------|--|--------|-----|---|---------|------------|------------|--|
| SAR | 1.89 | | 0.0100 | SAR | 1 | B4B2605 | 02/26/2024 | 02/29/2024 | |
|-----|------|--|--------|-----|---|---------|------------|------------|--|

Specific Conductance Mod. 9050A

| | | | | | | | | | |
|---------------------------|------|--|---------|----------|---|---------|------------|------------|--|
| Specific Conductance (EC) | 1.11 | | 0.00500 | mmhos/cm | 1 | B4B2614 | 02/26/2024 | 02/27/2024 | |
|---------------------------|------|--|---------|----------|---|---------|------------|------------|--|

Table 915 metals by EPA 6020B

Origins Laboratory, Inc.



The results in this report apply to the samples analyzed in accordance with the chain of custody document. This analytical report must be reproduced in its entirety.

Eagle Environmental Consulting, LLC
 8000 W 44th Ave
 Wheat Ridge CO 80033

Andrew Newberry
 Project Number: [none]
 Project: Noble - Frank CC #7-19

WH-SS-03@6'
2/22/2024 2:10:00PM

| Analyte | Result | Min Detection Limit | Reporting Limit | Units | Dilution | Batch | Prepared | Analyzed | Notes |
|---------|--------|---------------------|-----------------|-------|----------|-------|----------|----------|-------|
|---------|--------|---------------------|-----------------|-------|----------|-------|----------|----------|-------|

Origins Laboratory, Inc.
Y402568-03 (Soil)

Table 915 metals by EPA 6020B

| | | | | | | | | | |
|----------|-------|--|--------|-------|----|---------|------------|------------|--|
| Arsenic | 3.47 | | 0.286 | mg/kg | 10 | B4B2349 | 02/23/2024 | 03/10/2024 | |
| Barium | 142 | | 9.86 | " | " | " | " | " | |
| Cadmium | 0.378 | | 0.0986 | " | " | " | " | " | |
| Copper | 16.4 | | 9.86 | " | " | " | " | " | |
| Lead | 35.1 | | 0.986 | " | " | " | " | " | |
| Nickel | 12.8 | | 0.986 | " | " | " | " | " | |
| Selenium | 0.349 | | 0.256 | " | " | " | " | " | |
| Silver | ND | | 0.0986 | " | " | " | " | " | |
| Zinc | 91.2 | | 36.5 | " | " | " | " | " | |

Total Metals by 7196A

| | | | | | | | | | |
|----------------------|----|-------|-------|-------|---|---------|------------|------------|--|
| Chromium, Hexavalent | ND | 0.249 | 0.511 | mg/Kg | 1 | L737330 | 02/22/2024 | 03/08/2024 | |
|----------------------|----|-------|-------|-------|---|---------|------------|------------|--|

Origins Laboratory, Inc.



The results in this report apply to the samples analyzed in accordance with the chain of custody document. This analytical report must be reproduced in its entirety.

Eagle Environmental Consulting, LLC
 8000 W 44th Ave
 Wheat Ridge CO 80033

Andrew Newberry
 Project Number: [none]
 Project: Noble - Frank CC #7-19

WH-SS-04@6'
2/22/2024 2:12:00PM

| Analyte | Result | Min Detection Limit | Reporting Limit | Units | Dilution | Batch | Prepared | Analyzed | Notes |
|---------|--------|---------------------|-----------------|-------|----------|-------|----------|----------|-------|
|---------|--------|---------------------|-----------------|-------|----------|-------|----------|----------|-------|

Origins Laboratory, Inc.
Y402568-04 (Soil)

Boron (DTPA Sorbitol)

| | | | | | | | | | |
|-------|-------|--|-------|------|---|---------|------------|------------|--|
| Boron | 0.991 | | 0.101 | mg/L | 1 | B4B2611 | 02/26/2024 | 03/01/2024 | |
|-------|-------|--|-------|------|---|---------|------------|------------|--|

DRO/ORO by EPA 8015D

| | | | | | | | | | |
|-----------------------------------|----|--|------|-------|---|---------|------------|------------|---|
| Diesel (C10-C28) | ND | | 25.0 | mg/kg | 1 | B4B2701 | 02/27/2024 | 03/01/2024 | U |
| Residual Range Organics (C28-C40) | ND | | 100 | " | " | " | " | " | U |

| | | | | | | | | | |
|------------------------|--------|--|--------|--|--|---|---|---|--|
| Surrogate: o-Terphenyl | 63.1 % | | 50-150 | | | " | " | " | |
|------------------------|--------|--|--------|--|--|---|---|---|--|

GBTEX+TMBs by 8260D

| | | | | | | | | | |
|-----------------------------|----|--|---------|-------|---|---------|------------|------------|---|
| 1,2,4-Trimethylbenzene | ND | | 0.00200 | mg/kg | 1 | B4B2411 | 02/24/2024 | 02/25/2024 | U |
| 1,3,5-Trimethylbenzene | ND | | 0.00200 | " | " | " | " | " | U |
| Benzene | ND | | 0.00200 | " | " | " | " | " | U |
| Ethylbenzene | ND | | 0.00200 | " | " | " | " | " | U |
| Naphthalene | ND | | 0.00380 | " | " | " | " | " | U |
| Toluene | ND | | 0.00200 | " | " | " | " | " | U |
| Xylenes, total | ND | | 0.00200 | " | " | " | " | " | U |
| Gasoline Range Hydrocarbons | ND | | 0.200 | " | " | " | " | " | U |

Origins Laboratory, Inc.



The results in this report apply to the samples analyzed in accordance with the chain of custody document. This analytical report must be reproduced in its entirety.

Eagle Environmental Consulting, LLC
 8000 W 44th Ave
 Wheat Ridge CO 80033

Andrew Newberry
 Project Number: [none]
 Project: Noble - Frank CC #7-19

WH-SS-04@6'
2/22/2024 2:12:00PM

| Analyte | Result | Min Detection Limit | Reporting Limit | Units | Dilution | Batch | Prepared | Analyzed | Notes |
|---------|--------|---------------------|-----------------|-------|----------|-------|----------|----------|-------|
|---------|--------|---------------------|-----------------|-------|----------|-------|----------|----------|-------|

Origins Laboratory, Inc.
Y402568-04 (Soil)

GBTEX+TMBs by 8260D

| | | | | | | | | | |
|----------------------------------|--------|--|--------|--|--|-------------|------------|------------|--|
| Surrogate: 1,2-Dichloroethane-d4 | 105 % | | 70-130 | | | B4B24 11 | 02/24/2024 | 02/25/2024 | |
| Surrogate: Toluene-d8 | 98.8 % | | 70-130 | | | " | " | " | |
| Surrogate: 4-Bromofluorobenzene | 99.5 % | | 70-130 | | | " | " | " | |

Metals by Saturated Paste by EPA 6010

| | | | | | | | | | |
|-----------|------|--|-------|-------|----|--------|------------|------------|--|
| Calcium | 3.82 | | 0.499 | meq/L | 10 | [CALC] | 02/26/2024 | 02/29/2024 | |
| Magnesium | 1.76 | | 0.823 | " | " | " | " | " | |
| Sodium | 3.13 | | 0.435 | " | " | " | " | " | |

PAH by EPA 8270E

| | | | | | | | | | |
|-------------------------|----|--|-------|-------|---|---------|------------|------------|---|
| 1-Methylnaphthalene | ND | | 0.002 | mg/kg | 1 | B4B2822 | 02/28/2024 | 02/29/2024 | U |
| 2-Methylnaphthalene | ND | | 0.002 | " | " | " | " | " | U |
| Acenaphthene | ND | | 0.020 | " | " | " | " | " | U |
| Anthracene | ND | | 0.020 | " | " | " | " | " | U |
| Benzo (a) anthracene | ND | | 0.005 | " | " | " | " | " | U |
| Benzo (a) pyrene | ND | | 0.020 | " | " | " | " | " | U |
| Benzo (b) fluoranthene | ND | | 0.020 | " | " | " | " | " | U |
| Benzo (k) fluoranthene | ND | | 0.020 | " | " | " | " | " | U |
| Chrysene | ND | | 0.020 | " | " | " | " | " | U |
| Dibenz (a,h) anthracene | ND | | 0.020 | " | " | " | " | " | U |

Origins Laboratory, Inc.



The results in this report apply to the samples analyzed in accordance with the chain of custody document. This analytical report must be reproduced in its entirety.

Eagle Environmental Consulting, LLC
 8000 W 44th Ave
 Wheat Ridge CO 80033

Andrew Newberry
 Project Number: [none]
 Project: Noble - Frank CC #7-19

WH-SS-04@6'
2/22/2024 2:12:00PM

| Analyte | Result | Min Detection Limit | Reporting Limit | Units | Dilution | Batch | Prepared | Analyzed | Notes |
|---------|--------|---------------------|-----------------|-------|----------|-------|----------|----------|-------|
|---------|--------|---------------------|-----------------|-------|----------|-------|----------|----------|-------|

Origins Laboratory, Inc.
Y402568-04 (Soil)

PAH by EPA 8270E

| | | | | | | | | | |
|--------------------------|----|--|-------|-------|---|---------|------------|------------|---|
| Fluoranthene | ND | | 0.020 | mg/kg | 1 | B4B2822 | 02/28/2024 | 02/29/2024 | U |
| Fluorene | ND | | 0.020 | " | " | " | " | " | U |
| Indeno (1,2,3-cd) pyrene | ND | | 0.020 | " | " | " | " | " | U |
| Pyrene | ND | | 0.020 | " | " | " | " | " | U |

| | | | | | | | | | |
|---------------------------------|--------|--|--------|--|--|---|---|---|--|
| Surrogate: Fluorene-d10 | 100 % | | 60-130 | | | " | " | " | |
| Surrogate: Anthracene-d10 | 93.7 % | | 60-130 | | | " | " | " | |
| Surrogate: Pyrene-d10 | 104 % | | 60-130 | | | " | " | " | |
| Surrogate: Benzo (a) pyrene-d12 | 105 % | | 60-130 | | | " | " | " | |

pH in Soil by 9045D

| | | | | | | | | | |
|----|------|--|--|----------|---|---------|------------|------------|--|
| pH | 8.28 | | | pH Units | 1 | B4B2614 | 02/26/2024 | 02/27/2024 | |
|----|------|--|--|----------|---|---------|------------|------------|--|

SAR by 20B Saturated Paste

| | | | | | | | | | |
|-----|------|--|--------|-----|---|---------|------------|------------|--|
| SAR | 1.87 | | 0.0100 | SAR | 1 | B4B2605 | 02/26/2024 | 02/29/2024 | |
|-----|------|--|--------|-----|---|---------|------------|------------|--|

Specific Conductance Mod. 9050A

| | | | | | | | | | |
|---------------------------|-------|--|---------|----------|---|---------|------------|------------|--|
| Specific Conductance (EC) | 0.916 | | 0.00500 | mmhos/cm | 1 | B4B2614 | 02/26/2024 | 02/27/2024 | |
|---------------------------|-------|--|---------|----------|---|---------|------------|------------|--|

Table 915 metals by EPA 6020B

Origins Laboratory, Inc.



The results in this report apply to the samples analyzed in accordance with the chain of custody document. This analytical report must be reproduced in its entirety.

Eagle Environmental Consulting, LLC
 8000 W 44th Ave
 Wheat Ridge CO 80033

Andrew Newberry
 Project Number: [none]
 Project: Noble - Frank CC #7-19

WH-SS-04@6'
2/22/2024 2:12:00PM

| Analyte | Result | Min Detection Limit | Reporting Limit | Units | Dilution | Batch | Prepared | Analyzed | Notes |
|---------|--------|---------------------|-----------------|-------|----------|-------|----------|----------|-------|
|---------|--------|---------------------|-----------------|-------|----------|-------|----------|----------|-------|

Origins Laboratory, Inc.
Y402568-04 (Soil)

Table 915 metals by EPA 6020B

| | | | | | | | | | |
|----------|-------|--|--------|-------|----|---------|------------|------------|--|
| Arsenic | 3.57 | | 0.244 | mg/kg | 10 | B4B2349 | 02/23/2024 | 03/10/2024 | |
| Barium | 164 | | 8.41 | " | " | " | " | " | |
| Cadmium | 0.270 | | 0.0841 | " | " | " | " | " | |
| Copper | 15.5 | | 8.41 | " | " | " | " | " | |
| Lead | 16.1 | | 0.841 | " | " | " | " | " | |
| Nickel | 13.1 | | 0.841 | " | " | " | " | " | |
| Selenium | 0.385 | | 0.219 | " | " | " | " | " | |
| Silver | ND | | 0.0841 | " | " | " | " | " | |
| Zinc | 91.4 | | 31.1 | " | " | " | " | " | |

Total Metals by 7196A

| | | | | | | | | | |
|----------------------|----|-------|-----|-------|---|---------|------------|------------|--|
| Chromium, Hexavalent | ND | 0.244 | 0.5 | mg/Kg | 1 | L737330 | 02/22/2024 | 03/08/2024 | |
|----------------------|----|-------|-----|-------|---|---------|------------|------------|--|

Origins Laboratory, Inc.



The results in this report apply to the samples analyzed in accordance with the chain of custody document. This analytical report must be reproduced in its entirety.

Eagle Environmental Consulting, LLC
 8000 W 44th Ave
 Wheat Ridge CO 80033

Andrew Newberry
 Project Number: [none]
 Project: Noble - Frank CC #7-19

WH-FS-01@7'
2/22/2024 2:14:00PM

| Analyte | Result | Min Detection Limit | Reporting Limit | Units | Dilution | Batch | Prepared | Analyzed | Notes |
|---------|--------|---------------------|-----------------|-------|----------|-------|----------|----------|-------|
|---------|--------|---------------------|-----------------|-------|----------|-------|----------|----------|-------|

Origins Laboratory, Inc.
Y402568-05 (Soil)

Boron (DTPA Sorbitol)

| | | | | | | | | | |
|-------|------|--|-------|------|---|---------|------------|------------|--|
| Boron | 1.02 | | 0.101 | mg/L | 1 | B4B2611 | 02/26/2024 | 03/01/2024 | |
|-------|------|--|-------|------|---|---------|------------|------------|--|

DRO/ORO by EPA 8015D

| | | | | | | | | | |
|-----------------------------------|----|--|------|-------|---|---------|------------|------------|---|
| Diesel (C10-C28) | ND | | 25.0 | mg/kg | 1 | B4B2701 | 02/27/2024 | 03/01/2024 | U |
| Residual Range Organics (C28-C40) | ND | | 100 | " | " | " | " | " | U |

| | | | | | | | | | |
|------------------------|--------|--|--------|--|--|---|---|---|--|
| Surrogate: o-Terphenyl | 63.5 % | | 50-150 | | | " | " | " | |
|------------------------|--------|--|--------|--|--|---|---|---|--|

GBTEX+TMBs by 8260D

| | | | | | | | | | |
|-----------------------------|---------|--|---------|-------|---|---------|------------|------------|---|
| 1,2,4-Trimethylbenzene | 0.00472 | | 0.00200 | mg/kg | 1 | B4B2411 | 02/24/2024 | 02/25/2024 | |
| 1,3,5-Trimethylbenzene | 0.00274 | | 0.00200 | " | " | " | " | " | |
| Benzene | ND | | 0.00200 | " | " | " | " | " | U |
| Ethylbenzene | ND | | 0.00200 | " | " | " | " | " | U |
| Naphthalene | ND | | 0.00380 | " | " | " | " | " | U |
| Toluene | 0.00286 | | 0.00200 | " | " | " | " | " | |
| Xylenes, total | 0.0132 | | 0.00200 | " | " | " | " | " | |
| Gasoline Range Hydrocarbons | ND | | 0.200 | " | " | " | " | " | U |

| | | | | | | | | | |
|----------------------------------|-------|--|--------|--|--|---|---|---|--|
| Surrogate: 1,2-Dichloroethane-d4 | 104 % | | 70-130 | | | " | " | " | |
|----------------------------------|-------|--|--------|--|--|---|---|---|--|

Origins Laboratory, Inc.



The results in this report apply to the samples analyzed in accordance with the chain of custody document. This analytical report must be reproduced in its entirety.

Eagle Environmental Consulting, LLC
 8000 W 44th Ave
 Wheat Ridge CO 80033

Andrew Newberry
 Project Number: [none]
 Project: Noble - Frank CC #7-19

WH-FS-01@7'
2/22/2024 2:14:00PM

| Analyte | Result | Min Detection Limit | Reporting Limit | Units | Dilution | Batch | Prepared | Analyzed | Notes |
|---------|--------|---------------------|-----------------|-------|----------|-------|----------|----------|-------|
|---------|--------|---------------------|-----------------|-------|----------|-------|----------|----------|-------|

Origins Laboratory, Inc.
Y402568-05 (Soil)

GBTEX+TMBs by 8260D

| | | | | | | | | | |
|---------------------------------|--------|--|--------|--|--|-------------|------------|------------|--|
| Surrogate: Toluene-d8 | 98.2 % | | 70-130 | | | B4B24 11 | 02/24/2024 | 02/25/2024 | |
| Surrogate: 4-Bromofluorobenzene | 99.2 % | | 70-130 | | | " | " | " | |

Metals by Saturated Paste by EPA 6010

| | | | | | | | | | |
|-----------|------|-------|-------|----|--------|--|------------|------------|--|
| Calcium | 3.86 | 0.499 | meq/L | 10 | [CALC] | | 02/26/2024 | 02/29/2024 | |
| Magnesium | 1.72 | 0.823 | " | " | " | | " | " | |
| Sodium | 3.68 | 0.435 | " | " | " | | " | " | |

PAH by EPA 8270E

| | | | | | | | | | |
|-------------------------|----|-------|-------|---|---------|--|------------|------------|---|
| 1-Methylnaphthalene | ND | 0.002 | mg/kg | 1 | B4B2822 | | 02/28/2024 | 02/29/2024 | U |
| 2-Methylnaphthalene | ND | 0.002 | " | " | " | | " | " | U |
| Acenaphthene | ND | 0.020 | " | " | " | | " | " | U |
| Anthracene | ND | 0.020 | " | " | " | | " | " | U |
| Benzo (a) anthracene | ND | 0.005 | " | " | " | | " | " | U |
| Benzo (a) pyrene | ND | 0.020 | " | " | " | | " | " | U |
| Benzo (b) fluoranthene | ND | 0.020 | " | " | " | | " | " | U |
| Benzo (k) fluoranthene | ND | 0.020 | " | " | " | | " | " | U |
| Chrysene | ND | 0.020 | " | " | " | | " | " | U |
| Dibenz (a,h) anthracene | ND | 0.020 | " | " | " | | " | " | U |
| Fluoranthene | ND | 0.020 | " | " | " | | " | " | U |

Origins Laboratory, Inc.



The results in this report apply to the samples analyzed in accordance with the chain of custody document. This analytical report must be reproduced in its entirety.

Eagle Environmental Consulting, LLC
 8000 W 44th Ave
 Wheat Ridge CO 80033

Andrew Newberry
 Project Number: [none]
 Project: Noble - Frank CC #7-19

WH-FS-01@7'
2/22/2024 2:14:00PM

| Analyte | Result | Min Detection Limit | Reporting Limit | Units | Dilution | Batch | Prepared | Analyzed | Notes |
|---------|--------|---------------------|-----------------|-------|----------|-------|----------|----------|-------|
|---------|--------|---------------------|-----------------|-------|----------|-------|----------|----------|-------|

Origins Laboratory, Inc.
Y402568-05 (Soil)

PAH by EPA 8270E

| | | | | | | | | | |
|--------------------------|----|--|-------|-------|---|---------|------------|------------|---|
| Fluorene | ND | | 0.020 | mg/kg | 1 | B4B2822 | 02/28/2024 | 02/29/2024 | U |
| Indeno (1,2,3-cd) pyrene | ND | | 0.020 | " | " | " | " | " | U |
| Pyrene | ND | | 0.020 | " | " | " | " | " | U |

| | | | | | | | | | |
|---------------------------------|--------|--|--------|--|--|---|---|---|--|
| Surrogate: Fluorene-d10 | 101 % | | 60-130 | | | " | " | " | |
| Surrogate: Anthracene-d10 | 93.0 % | | 60-130 | | | " | " | " | |
| Surrogate: Pyrene-d10 | 101 % | | 60-130 | | | " | " | " | |
| Surrogate: Benzo (a) pyrene-d12 | 102 % | | 60-130 | | | " | " | " | |

pH in Soil by 9045D

| | | | | | | | | | |
|----|------|--|--|----------|---|---------|------------|------------|--|
| pH | 8.24 | | | pH Units | 1 | B4B2614 | 02/26/2024 | 02/27/2024 | |
|----|------|--|--|----------|---|---------|------------|------------|--|

SAR by 20B Saturated Paste

| | | | | | | | | | |
|-----|------|--|--------|-----|---|---------|------------|------------|--|
| SAR | 2.20 | | 0.0100 | SAR | 1 | B4B2605 | 02/26/2024 | 02/29/2024 | |
|-----|------|--|--------|-----|---|---------|------------|------------|--|

Specific Conductance Mod. 9050A

| | | | | | | | | | |
|---------------------------|-------|--|---------|----------|---|---------|------------|------------|--|
| Specific Conductance (EC) | 0.961 | | 0.00500 | mmhos/cm | 1 | B4B2614 | 02/26/2024 | 02/27/2024 | |
|---------------------------|-------|--|---------|----------|---|---------|------------|------------|--|

Table 915 metals by EPA 6020B

| | | | | | | | | | |
|---------|------|--|-------|-------|----|---------|------------|------------|--|
| Arsenic | 3.70 | | 0.270 | mg/kg | 10 | B4B2349 | 02/23/2024 | 03/10/2024 | |
|---------|------|--|-------|-------|----|---------|------------|------------|--|

Origins Laboratory, Inc.



The results in this report apply to the samples analyzed in accordance with the chain of custody document. This analytical report must be reproduced in its entirety.

Eagle Environmental Consulting, LLC
 8000 W 44th Ave
 Wheat Ridge CO 80033

Andrew Newberry
 Project Number: [none]
 Project: Noble - Frank CC #7-19

WH-FS-01@7'
2/22/2024 2:14:00PM

| Analyte | Result | Min Detection Limit | Reporting Limit | Units | Dilution | Batch | Prepared | Analyzed | Notes |
|---------|--------|---------------------|-----------------|-------|----------|-------|----------|----------|-------|
|---------|--------|---------------------|-----------------|-------|----------|-------|----------|----------|-------|

Origins Laboratory, Inc.
Y402568-05 (Soil)

Table 915 metals by EPA 6020B

| | | | | | | | | | |
|----------|-------|--|--------|-------|----|---------|------------|------------|--|
| Barium | 190 | | 9.30 | mg/kg | 10 | B4B2349 | 02/23/2024 | 03/10/2024 | |
| Cadmium | 0.264 | | 0.0930 | " | " | " | " | " | |
| Copper | 15.9 | | 9.30 | " | " | " | " | " | |
| Lead | 23.6 | | 0.930 | " | " | " | " | " | |
| Nickel | 13.5 | | 0.930 | " | " | " | " | " | |
| Selenium | 0.409 | | 0.242 | " | " | " | " | " | |
| Silver | 0.142 | | 0.0930 | " | " | " | " | " | |
| Zinc | 87.4 | | 34.4 | " | " | " | " | " | |

Total Metals by 7196A

| | | | | | | | | | |
|----------------------|----|-------|-----|-------|---|---------|------------|------------|--|
| Chromium, Hexavalent | ND | 0.244 | 0.5 | mg/Kg | 1 | L737330 | 02/22/2024 | 03/08/2024 | |
|----------------------|----|-------|-----|-------|---|---------|------------|------------|--|

Origins Laboratory, Inc.



The results in this report apply to the samples analyzed in accordance with the chain of custody document. This analytical report must be reproduced in its entirety.

Eagle Environmental Consulting, LLC
 8000 W 44th Ave
 Wheat Ridge CO 80033

Andrew Newberry
 Project Number: [none]
 Project: Noble - Frank CC #7-19

Background-01@2'
2/22/2024 2:16:00PM

| Analyte | Result | Min Detection Limit | Reporting Limit | Units | Dilution | Batch | Prepared | Analyzed | Notes |
|---------|--------|---------------------|-----------------|-------|----------|-------|----------|----------|-------|
|---------|--------|---------------------|-----------------|-------|----------|-------|----------|----------|-------|

Origins Laboratory, Inc.
Y402568-06 (Soil)

Boron (DTPA Sorbitol)

| | | | | | | | | | |
|-------|------|--|-------|------|---|---------|------------|------------|--|
| Boron | 2.39 | | 0.101 | mg/L | 1 | B4B2611 | 02/26/2024 | 03/01/2024 | |
|-------|------|--|-------|------|---|---------|------------|------------|--|

Metals by Saturated Paste by EPA 6010

| | | | | | | | | | |
|-----------|------|--|-------|-------|----|--------|------------|------------|--|
| Calcium | 24.1 | | 0.499 | meq/L | 10 | [CALC] | 02/26/2024 | 02/29/2024 | |
| Magnesium | 15.2 | | 0.823 | " | " | " | " | " | |
| Sodium | 29.8 | | 0.435 | " | " | " | " | " | |

pH in Soil by 9045D

| | | | | | | | | | |
|----|------|--|--|----------|---|---------|------------|------------|--|
| pH | 8.09 | | | pH Units | 1 | B4B2614 | 02/26/2024 | 02/27/2024 | |
|----|------|--|--|----------|---|---------|------------|------------|--|

SAR by 20B Saturated Paste

| | | | | | | | | | |
|-----|------|--|--------|-----|---|---------|------------|------------|--|
| SAR | 6.73 | | 0.0100 | SAR | 1 | B4B2605 | 02/26/2024 | 02/29/2024 | |
|-----|------|--|--------|-----|---|---------|------------|------------|--|

Specific Conductance Mod. 9050A

| | | | | | | | | | |
|---------------------------|------|--|---------|----------|---|---------|------------|------------|--|
| Specific Conductance (EC) | 4.94 | | 0.00500 | mmhos/cm | 1 | B4B2614 | 02/26/2024 | 02/27/2024 | |
|---------------------------|------|--|---------|----------|---|---------|------------|------------|--|

Table 915 metals by EPA 6020B

| | | | | | | | | | |
|---------|-------|--|--------|-------|----|---------|------------|------------|--|
| Arsenic | 3.81 | | 0.244 | mg/kg | 10 | B4B2349 | 02/23/2024 | 03/10/2024 | |
| Barium | 148 | | 8.40 | " | " | " | " | " | |
| Cadmium | 0.239 | | 0.0840 | " | " | " | " | " | |
| Copper | 14.6 | | 8.40 | " | " | " | " | " | |

Origins Laboratory, Inc.



The results in this report apply to the samples analyzed in accordance with the chain of custody document. This analytical report must be reproduced in its entirety.

Eagle Environmental Consulting, LLC
 8000 W 44th Ave
 Wheat Ridge CO 80033

Andrew Newberry
 Project Number: [none]
 Project: Noble - Frank CC #7-19

Background-01@2'
2/22/2024 2:16:00PM

| Analyte | Result | Min Detection Limit | Reporting Limit | Units | Dilution | Batch | Prepared | Analyzed | Notes |
|---------|--------|---------------------|-----------------|-------|----------|-------|----------|----------|-------|
|---------|--------|---------------------|-----------------|-------|----------|-------|----------|----------|-------|

Origins Laboratory, Inc.
Y402568-06 (Soil)

Table 915 metals by EPA 6020B

| | | | | | | | | | |
|----------|-------|--|--------|-------|----|---------|------------|------------|--|
| Lead | 11.8 | | 0.840 | mg/kg | 10 | B4B2349 | 02/23/2024 | 03/10/2024 | |
| Nickel | 13.0 | | 0.840 | " | " | " | " | " | |
| Selenium | 0.313 | | 0.218 | " | " | " | " | " | |
| Silver | ND | | 0.0840 | " | " | " | " | " | |
| Zinc | 82.0 | | 31.1 | " | " | " | " | " | |

Total Metals by 7196A

| | | | | | | | | | |
|----------------------|----|-------|-----|-------|---|---------|------------|------------|--|
| Chromium, Hexavalent | ND | 0.244 | 0.5 | mg/Kg | 1 | L737330 | 02/22/2024 | 03/08/2024 | |
|----------------------|----|-------|-----|-------|---|---------|------------|------------|--|

Origins Laboratory, Inc.



The results in this report apply to the samples analyzed in accordance with the chain of custody document. This analytical report must be reproduced in its entirety.

Eagle Environmental Consulting, LLC
 8000 W 44th Ave
 Wheat Ridge CO 80033

Andrew Newberry
 Project Number: [none]
 Project: Noble - Frank CC #7-19

Volatile Organic Compounds by GC/MS SW846 8260D - Quality Control
Origins Laboratory, Inc.

| Analyte | Result | Reporting Limit | Units | Spike Level | Source Result | %REC | %REC Limits | RPD | RPD Limit | Notes |
|---------|--------|-----------------|-------|-------------|---------------|------|-------------|-----|-----------|-------|
|---------|--------|-----------------|-------|-------------|---------------|------|-------------|-----|-----------|-------|

Batch B4B2411 - EPA 5030 (soil)

Blank (B4B2411-BLK1)

Prepared: 02/24/2024 Analyzed: 02/25/2024

| | | | | | | | | | | |
|----------------------------------|------|---------|-------|-------|------|--|--------|--|--|---|
| 1,2,4-Trimethylbenzene | ND | 0.00200 | mg/kg | | | | | | | U |
| 1,3,5-Trimethylbenzene | ND | 0.00200 | " | | | | | | | U |
| Benzene | ND | 0.00200 | " | | | | | | | U |
| Ethylbenzene | ND | 0.00200 | " | | | | | | | U |
| Naphthalene | ND | 0.00380 | " | | | | | | | U |
| Toluene | ND | 0.00200 | " | | | | | | | U |
| Xylenes, total | ND | 0.00200 | " | | | | | | | U |
| Gasoline Range Hydrocarbons | ND | 0.200 | " | | | | | | | U |
| Surrogate: 1,2-Dichloroethane-d4 | 0.12 | | " | 0.125 | 96.7 | | 70-130 | | | |
| Surrogate: Toluene-d8 | 0.12 | | " | 0.125 | 98.4 | | 70-130 | | | |
| Surrogate: 4-Bromofluorobenzene | 0.12 | | " | 0.125 | 98.8 | | 70-130 | | | |

Origins Laboratory, Inc.



The results in this report apply to the samples analyzed in accordance with the chain of custody document. This analytical report must be reproduced in its entirety.

Eagle Environmental Consulting, LLC
 8000 W 44th Ave
 Wheat Ridge CO 80033

Andrew Newberry
 Project Number: [none]
 Project: Noble - Frank CC #7-19

Volatile Organic Compounds by GC/MS SW846 8260D - Quality Control
Origins Laboratory, Inc.

| Analyte | Result | Reporting Limit | Units | Spike Level | Source Result | %REC | %REC Limits | RPD | RPD Limit | Notes |
|---------|--------|-----------------|-------|-------------|---------------|------|-------------|-----|-----------|-------|
|---------|--------|-----------------|-------|-------------|---------------|------|-------------|-----|-----------|-------|

Batch B4B2411 - EPA 5030 (soil)

LCS (B4B2411-BS1)

Prepared: 02/24/2024 Analyzed: 02/25/2024

| | | | | | | | | | | |
|----------------------------------|--------|---------|-------|-------|--|------|--------|--|--|--|
| 1,2,4-Trimethylbenzene | 0.102 | 0.00200 | mg/kg | 0.100 | | 102 | 70-130 | | | |
| 1,3,5-Trimethylbenzene | 0.104 | 0.00200 | " | 0.100 | | 104 | 70-130 | | | |
| Benzene | 0.0986 | 0.00200 | " | 0.100 | | 98.6 | 70-130 | | | |
| Ethylbenzene | 0.104 | 0.00200 | " | 0.100 | | 104 | 70-130 | | | |
| Naphthalene | 0.113 | 0.00380 | " | 0.100 | | 113 | 70-130 | | | |
| Toluene | 0.103 | 0.00200 | " | 0.100 | | 103 | 70-130 | | | |
| o-Xylene | 0.0978 | 0.00200 | " | 0.100 | | 97.8 | 70-130 | | | |
| m,p-Xylene | 0.206 | 0.00400 | " | 0.200 | | 103 | 70-130 | | | |
| Surrogate: 1,2-Dichloroethane-d4 | 0.12 | | " | 0.125 | | 96.5 | 70-130 | | | |
| Surrogate: Toluene-d8 | 0.13 | | " | 0.125 | | 100 | 70-130 | | | |
| Surrogate: 4-Bromofluorobenzene | 0.12 | | " | 0.125 | | 96.7 | 70-130 | | | |

Origins Laboratory, Inc.



The results in this report apply to the samples analyzed in accordance with the chain of custody document. This analytical report must be reproduced in its entirety.

Eagle Environmental Consulting, LLC
 8000 W 44th Ave
 Wheat Ridge CO 80033

Andrew Newberry
 Project Number: [none]
 Project: Noble - Frank CC #7-19

Volatile Organic Compounds by GC/MS SW846 8260D - Quality Control
Origins Laboratory, Inc.

| Analyte | Result | Reporting Limit | Units | Spike Level | Source Result | %REC | %REC Limits | RPD | RPD Limit | Notes |
|---------|--------|-----------------|-------|-------------|---------------|------|-------------|-----|-----------|-------|
|---------|--------|-----------------|-------|-------------|---------------|------|-------------|-----|-----------|-------|

Batch B4B2411 - EPA 5030 (soil)

| Matrix Spike (B4B2411-MS1) | Source: Y402549-01 | | | Prepared: 02/24/2024 Analyzed: 02/25/2024 | | | | | | |
|----------------------------------|--------------------|---------|-------|-------------------------------------------|---------|------|--------|--|--|--|
| 1,2,4-Trimethylbenzene | 0.108 | 0.00200 | mg/kg | 0.100 | 0.0246 | 82.9 | 70-130 | | | |
| 1,3,5-Trimethylbenzene | 0.108 | 0.00200 | " | 0.100 | 0.00464 | 104 | 70-130 | | | |
| Benzene | 0.0989 | 0.00200 | " | 0.100 | ND | 98.9 | 70-130 | | | |
| Ethylbenzene | 0.108 | 0.00200 | " | 0.100 | 0.00150 | 106 | 70-130 | | | |
| Naphthalene | 0.105 | 0.00380 | " | 0.100 | 0.00342 | 102 | 70-130 | | | |
| Toluene | 0.103 | 0.00200 | " | 0.100 | 0.00154 | 101 | 70-130 | | | |
| o-Xylene | 0.101 | 0.00200 | " | 0.100 | ND | 101 | 70-130 | | | |
| m,p-Xylene | 0.215 | 0.00400 | " | 0.200 | 0.00286 | 106 | 70-130 | | | |
| Surrogate: 1,2-Dichloroethane-d4 | 0.11 | | " | 0.125 | | 91.8 | 70-130 | | | |
| Surrogate: Toluene-d8 | 0.13 | | " | 0.125 | | 101 | 70-130 | | | |
| Surrogate: 4-Bromofluorobenzene | 0.12 | | " | 0.125 | | 97.4 | 70-130 | | | |

Origins Laboratory, Inc.



The results in this report apply to the samples analyzed in accordance with the chain of custody document. This analytical report must be reproduced in its entirety.

Eagle Environmental Consulting, LLC
 8000 W 44th Ave
 Wheat Ridge CO 80033

Andrew Newberry
 Project Number: [none]
 Project: Noble - Frank CC #7-19

Volatile Organic Compounds by GC/MS SW846 8260D - Quality Control
Origins Laboratory, Inc.

| Analyte | Result | Reporting Limit | Units | Spike Level | Source Result | %REC | %REC Limits | RPD | RPD Limit | Notes |
|---------|--------|-----------------|-------|-------------|---------------|------|-------------|-----|-----------|-------|
|---------|--------|-----------------|-------|-------------|---------------|------|-------------|-----|-----------|-------|

Batch B4B2411 - EPA 5030 (soil)

| Matrix Spike Dup (B4B2411-MSD1) | Source: Y402549-01 | | | Prepared: 02/24/2024 Analyzed: 02/25/2024 | | | | | | |
|----------------------------------|--------------------|---------|-------|-------------------------------------------|---------|------|--------|------|----|--|
| 1,2,4-Trimethylbenzene | 0.115 | 0.00200 | mg/kg | 0.100 | 0.0246 | 90.0 | 70-130 | 6.41 | 20 | |
| 1,3,5-Trimethylbenzene | 0.101 | 0.00200 | " | 0.100 | 0.00464 | 96.6 | 70-130 | 6.59 | 20 | |
| Benzene | 0.0974 | 0.00200 | " | 0.100 | ND | 97.4 | 70-130 | 1.55 | 20 | |
| Ethylbenzene | 0.101 | 0.00200 | " | 0.100 | 0.00150 | 99.3 | 70-130 | 6.51 | 20 | |
| Naphthalene | 0.113 | 0.00380 | " | 0.100 | 0.00342 | 109 | 70-130 | 6.50 | 20 | |
| Toluene | 0.0993 | 0.00200 | " | 0.100 | 0.00154 | 97.8 | 70-130 | 3.52 | 20 | |
| o-Xylene | 0.0938 | 0.00200 | " | 0.100 | ND | 93.8 | 70-130 | 6.92 | 20 | |
| m,p-Xylene | 0.200 | 0.00400 | " | 0.200 | 0.00286 | 98.7 | 70-130 | 7.21 | 20 | |
| Surrogate: 1,2-Dichloroethane-d4 | 0.12 | | " | 0.125 | | 96.6 | 70-130 | | | |
| Surrogate: Toluene-d8 | 0.13 | | " | 0.125 | | 101 | 70-130 | | | |
| Surrogate: 4-Bromofluorobenzene | 0.12 | | " | 0.125 | | 96.5 | 70-130 | | | |

Origins Laboratory, Inc.



The results in this report apply to the samples analyzed in accordance with the chain of custody document. This analytical report must be reproduced in its entirety.

Eagle Environmental Consulting, LLC
 8000 W 44th Ave
 Wheat Ridge CO 80033

Andrew Newberry
 Project Number: [none]
 Project: Noble - Frank CC #7-19

Volatile Organic Compounds by GC/MS SW846 8260D - Quality Control
Origins Laboratory, Inc.

| Analyte | Result | Reporting Limit | Units | Spike Level | Source Result | %REC | %REC Limits | RPD | RPD Limit | Notes |
|-----------------------------------|--------|-----------------|-------|-------------|-------------------------------------------|------|-------------|-----|-----------|-------|
| Batch B4B2701 - EPA 3550B | | | | | | | | | | |
| Blank (B4B2701-BLK1) | | | | | | | | | | |
| | | | | | Prepared: 02/27/2024 Analyzed: 03/01/2024 | | | | | |
| Diesel (C10-C28) | ND | 25.0 | mg/kg | | | | | | | U |
| Residual Range Organics (C28-C40) | ND | 100 | " | | | | | | | U |
| Surrogate: o-Terphenyl | 20 | | " | 24.9 | | 79.1 | 50-150 | | | |

Origins Laboratory, Inc.



The results in this report apply to the samples analyzed in accordance with the chain of custody document. This analytical report must be reproduced in its entirety.

Eagle Environmental Consulting, LLC
 8000 W 44th Ave
 Wheat Ridge CO 80033

Andrew Newberry
 Project Number: [none]
 Project: Noble - Frank CC #7-19

Extractable Petroleum Hydrocarbons by 8015D - Quality Control
Origins Laboratory, Inc.

| Analyte | Result | Reporting Limit | Units | Spike Level | Source Result | %REC | %REC Limits | RPD | RPD Limit | Notes |
|---------|--------|-----------------|-------|-------------|---------------|------|-------------|-----|-----------|-------|
|---------|--------|-----------------|-------|-------------|---------------|------|-------------|-----|-----------|-------|

Batch B4B2701 - EPA 3550B

LCS (B4B2701-BS1)

Prepared: 02/27/2024 Analyzed: 03/01/2024

| | | | | | | | | | | |
|-----------------------------------|-----|------|-------|------|--|------|--------|--|--|--|
| Diesel (C10-C28) | 857 | 50.0 | mg/kg | 1000 | | 85.7 | 70-130 | | | |
| Residual Range Organics (C28-C40) | 914 | 200 | " | 1000 | | 91.4 | 70-130 | | | |
| Surrogate: o-Terphenyl | 37 | | " | 49.8 | | 74.2 | 50-150 | | | |

Origins Laboratory, Inc.



The results in this report apply to the samples analyzed in accordance with the chain of custody document. This analytical report must be reproduced in its entirety.

Eagle Environmental Consulting, LLC
 8000 W 44th Ave
 Wheat Ridge CO 80033

Andrew Newberry
 Project Number: [none]
 Project: Noble - Frank CC #7-19

Extractable Petroleum Hydrocarbons by 8015D - Quality Control
Origins Laboratory, Inc.

| Analyte | Result | Reporting Limit | Units | Spike Level | Source Result | %REC | %REC Limits | RPD | RPD Limit | Notes |
|---------|--------|-----------------|-------|-------------|---------------|------|-------------|-----|-----------|-------|
|---------|--------|-----------------|-------|-------------|---------------|------|-------------|-----|-----------|-------|

Batch B4B2701 - EPA 3550B

| Matrix Spike (B4B2701-MS1) | Source: Y402568-01 | | | Prepared: 02/27/2024 Analyzed: 03/01/2024 | | | | | | |
|-----------------------------------|---------------------------|------|-------|-------------------------------------------|----|------|--------|--|--|--|
| Diesel (C10-C28) | 830 | 50.0 | mg/kg | 1000 | ND | 83.0 | 70-130 | | | |
| Residual Range Organics (C28-C40) | 883 | 200 | " | 1000 | ND | 88.3 | 70-130 | | | |
| Surrogate: o-Terphenyl | 34 | | " | 49.8 | | 67.5 | 50-150 | | | |

Origins Laboratory, Inc.



The results in this report apply to the samples analyzed in accordance with the chain of custody document. This analytical report must be reproduced in its entirety.

Eagle Environmental Consulting, LLC
 8000 W 44th Ave
 Wheat Ridge CO 80033

Andrew Newberry
 Project Number: [none]
 Project: Noble - Frank CC #7-19

Extractable Petroleum Hydrocarbons by 8015D - Quality Control
Origins Laboratory, Inc.

| Analyte | Result | Reporting Limit | Units | Spike Level | Source Result | %REC | %REC Limits | RPD | RPD Limit | Notes |
|---------|--------|-----------------|-------|-------------|---------------|------|-------------|-----|-----------|-------|
|---------|--------|-----------------|-------|-------------|---------------|------|-------------|-----|-----------|-------|

Batch B4B2701 - EPA 3550B

| Matrix Spike Dup (B4B2701-MSD1) | Source: Y402568-01 | | | Prepared: 02/27/2024 Analyzed: 03/01/2024 | | | | | | |
|----------------------------------------|---------------------------|------|-------|--------------------------------------------------|----|------|--------|------|----|--|
| Diesel (C10-C28) | 844 | 50.0 | mg/kg | 1000 | ND | 84.4 | 70-130 | 1.60 | 35 | |
| Residual Range Organics (C28-C40) | 907 | 200 | " | 1000 | ND | 90.7 | 70-130 | 2.67 | 35 | |
| Surrogate: o-Terphenyl | 40 | | " | 49.8 | | 79.9 | 50-150 | | | |

Origins Laboratory, Inc.



The results in this report apply to the samples analyzed in accordance with the chain of custody document. This analytical report must be reproduced in its entirety.

Eagle Environmental Consulting, LLC
 8000 W 44th Ave
 Wheat Ridge CO 80033

Andrew Newberry
 Project Number: [none]
 Project: Noble - Frank CC #7-19

Extractable Petroleum Hydrocarbons by 8015D - Quality Control
Origins Laboratory, Inc.

| Analyte | Result | Reporting Limit | Units | Spike Level | Source Result | %REC | %REC Limits | RPD | RPD Limit | Notes |
|---------|--------|-----------------|-------|-------------|---------------|------|-------------|-----|-----------|-------|
|---------|--------|-----------------|-------|-------------|---------------|------|-------------|-----|-----------|-------|

Metals by EPA 6000/7000 Series Methods - Quality Control
Origins Laboratory, Inc.

| Analyte | Result | Reporting Limit | Units | Spike Level | Source Result | %REC | %REC Limits | RPD | RPD Limit | Notes |
|---------|--------|-----------------|-------|-------------|---------------|------|-------------|-----|-----------|-------|
|---------|--------|-----------------|-------|-------------|---------------|------|-------------|-----|-----------|-------|

Batch B4B2349 - EPA 3050B

Blank (B4B2349-BLK1)

Prepared: 02/23/2024 Analyzed: 03/10/2024

| | | | | | | | | | | |
|----------|----|-------|-------|--|--|--|--|--|--|--|
| Arsenic | ND | 0.290 | mg/kg | | | | | | | |
| Barium | ND | 10.0 | " | | | | | | | |
| Cadmium | ND | 0.100 | " | | | | | | | |
| Copper | ND | 10.0 | " | | | | | | | |
| Lead | ND | 1.00 | " | | | | | | | |
| Nickel | ND | 1.00 | " | | | | | | | |
| Selenium | ND | 0.260 | " | | | | | | | |
| Silver | ND | 0.100 | " | | | | | | | |
| Zinc | ND | 37.0 | " | | | | | | | |

LCS (B4B2349-BS1)

Prepared: 02/23/2024 Analyzed: 03/10/2024

| | | | | | | | | | | |
|----------|------|-------|-------|------|--|------|--------|--|--|--|
| Arsenic | 5.78 | 0.290 | mg/kg | 5.00 | | 116 | 80-120 | | | |
| Barium | 572 | 10.0 | " | 500 | | 114 | 80-120 | | | |
| Cadmium | 4.58 | 0.100 | " | 5.00 | | 91.6 | 80-120 | | | |
| Copper | 49.4 | 10.0 | " | 50.0 | | 98.8 | 80-120 | | | |
| Lead | 5.06 | 1.00 | " | 5.00 | | 101 | 80-120 | | | |
| Nickel | 5.88 | 1.00 | " | 5.00 | | 118 | 80-120 | | | |
| Selenium | 9.22 | 0.260 | " | 9.50 | | 97.1 | 80-120 | | | |
| Silver | 5.84 | 0.100 | " | 5.00 | | 117 | 80-120 | | | |
| Zinc | 47.7 | 37.0 | " | 50.0 | | 95.4 | 80-120 | | | |

Matrix Spike (B4B2349-MS1)

Source: Y402575-01

Prepared: 02/23/2024 Analyzed: 03/10/2024

Origins Laboratory, Inc.



The results in this report apply to the samples analyzed in accordance with the chain of custody document. This analytical report must be reproduced in its entirety.

Eagle Environmental Consulting, LLC
 8000 W 44th Ave
 Wheat Ridge CO 80033

Andrew Newberry
 Project Number: [none]
 Project: Noble - Frank CC #7-19

Metals by EPA 6000/7000 Series Methods - Quality Control
Origins Laboratory, Inc.

| Analyte | Result | Reporting Limit | Units | Spike Level | Source Result | %REC | %REC Limits | RPD | RPD Limit | Notes |
|---------|--------|-----------------|-------|-------------|---------------|------|-------------|-----|-----------|-------|
|---------|--------|-----------------|-------|-------------|---------------|------|-------------|-----|-----------|-------|

Batch B4B2349 - EPA 3050B

| Matrix Spike (B4B2349-MS1) | | Source: Y402575-01 | | | Prepared: 02/23/2024 Analyzed: 03/10/2024 | | | | | |
|----------------------------------------|------|---------------------------|-------|------|--------------------------------------------------|------|--------|------|----|-------|
| Arsenic | 7.18 | 0.274 | mg/kg | 4.73 | 2.13 | 107 | 75-125 | | | |
| Barium | 549 | 9.45 | " | 473 | 50.0 | 106 | 75-125 | | | |
| Cadmium | 5.26 | 0.0945 | " | 4.73 | 0.0684 | 110 | 75-125 | | | |
| Copper | 55.6 | 9.45 | " | 47.3 | 3.26 | 111 | 75-125 | | | |
| Lead | 8.23 | 0.945 | " | 4.73 | 3.72 | 95.4 | 75-125 | | | |
| Nickel | 8.82 | 0.945 | " | 4.73 | 4.00 | 102 | 75-125 | | | |
| Selenium | 10.7 | 0.246 | " | 8.98 | 0.0614 | 118 | 75-125 | | | |
| Silver | 5.04 | 0.0945 | " | 4.73 | 0.0188 | 106 | 75-125 | | | |
| Zinc | 80.2 | 35.0 | " | 47.3 | 21.5 | 124 | 75-125 | | | |
| Matrix Spike Dup (B4B2349-MSD1) | | Source: Y402575-01 | | | Prepared: 02/23/2024 Analyzed: 03/10/2024 | | | | | |
| Arsenic | 6.63 | 0.258 | mg/kg | 4.45 | 2.13 | 101 | 75-125 | 7.99 | 20 | |
| Barium | 520 | 8.91 | " | 445 | 50.0 | 106 | 75-125 | 5.39 | 20 | |
| Cadmium | 4.90 | 0.0891 | " | 4.45 | 0.0684 | 108 | 75-125 | 7.12 | 20 | |
| Copper | 50.7 | 8.91 | " | 44.5 | 3.26 | 106 | 75-125 | 9.29 | 20 | |
| Lead | 8.68 | 0.891 | " | 4.45 | 3.72 | 111 | 75-125 | 5.37 | 20 | |
| Nickel | 8.34 | 0.891 | " | 4.45 | 4.00 | 97.4 | 75-125 | 5.63 | 20 | |
| Selenium | 10.3 | 0.232 | " | 8.46 | 0.0614 | 121 | 75-125 | 3.98 | 20 | |
| Silver | 4.68 | 0.0891 | " | 4.45 | 0.0188 | 105 | 75-125 | 7.38 | 20 | |
| Zinc | 77.7 | 33.0 | " | 44.5 | 21.5 | 126 | 75-125 | 3.18 | 20 | QM-07 |

Origins Laboratory, Inc.



The results in this report apply to the samples analyzed in accordance with the chain of custody document. This analytical report must be reproduced in its entirety.

Eagle Environmental Consulting, LLC
 8000 W 44th Ave
 Wheat Ridge CO 80033

Andrew Newberry
 Project Number: [none]
 Project: Noble - Frank CC #7-19

EPA 8270E (SW846) - Semivolatile Organic Compounds - Quality Control
Origins Laboratory, Inc.

| Analyte | Result | Reporting Limit | Units | Spike Level | Source Result | %REC | %REC Limits | RPD | RPD Limit | Notes |
|---------|--------|-----------------|-------|-------------|---------------|------|-------------|-----|-----------|-------|
|---------|--------|-----------------|-------|-------------|---------------|------|-------------|-----|-----------|-------|

Batch B4B2822 - EPA 3580

Blank (B4B2822-BLK1)

Prepared: 02/28/2024 Analyzed: 02/29/2024

| | | | | | | | | | | |
|---------------------------------|-----|-------|-------|-----|--|------|--------|--|--|---|
| 1-Methylnaphthalene | ND | 0.002 | mg/kg | | | | | | | U |
| 2-Methylnaphthalene | ND | 0.002 | " | | | | | | | U |
| Acenaphthene | ND | 0.020 | " | | | | | | | U |
| Anthracene | ND | 0.020 | " | | | | | | | U |
| Benzo (a) anthracene | ND | 0.005 | " | | | | | | | U |
| Benzo (a) pyrene | ND | 0.020 | " | | | | | | | U |
| Benzo (b) fluoranthene | ND | 0.020 | " | | | | | | | U |
| Benzo (g,h,i) perylene | ND | 0.020 | " | | | | | | | U |
| Benzo (k) fluoranthene | ND | 0.020 | " | | | | | | | U |
| Chrysene | ND | 0.020 | " | | | | | | | U |
| Dibenz (a,h) anthracene | ND | 0.020 | " | | | | | | | U |
| Fluoranthene | ND | 0.020 | " | | | | | | | U |
| Fluorene | ND | 0.020 | " | | | | | | | U |
| Indeno (1,2,3-cd) pyrene | ND | 0.020 | " | | | | | | | U |
| Naphthalene | ND | 0.002 | " | | | | | | | U |
| Phenanthrene | ND | 0.020 | " | | | | | | | U |
| Pyrene | ND | 0.020 | " | | | | | | | U |
| Surrogate: Fluorene-d10 | 200 | | ug/kg | 200 | | 101 | 60-130 | | | |
| Surrogate: Anthracene-d10 | 190 | | " | 200 | | 94.0 | 60-130 | | | |
| Surrogate: Pyrene-d10 | 200 | | " | 200 | | 99.4 | 60-130 | | | |
| Surrogate: Benzo (a) pyrene-d12 | 210 | | " | 200 | | 105 | 60-130 | | | |

LCS (B4B2822-BS1)

Prepared: 02/28/2024 Analyzed: 02/29/2024

| | | | | | | | | | | |
|---------------------|-------|-------|-------|-------|--|------|--------|--|--|--|
| 1-Methylnaphthalene | 0.178 | 0.002 | mg/kg | 0.200 | | 89.2 | 70-130 | | | |
| 2-Methylnaphthalene | 0.177 | 0.002 | " | 0.200 | | 88.4 | 70-130 | | | |
| Acenaphthene | 0.179 | 0.020 | " | 0.200 | | 89.4 | 70-130 | | | |
| Anthracene | 0.179 | 0.020 | " | 0.200 | | 89.7 | 70-130 | | | |

Origins Laboratory, Inc.



The results in this report apply to the samples analyzed in accordance with the chain of custody document. This analytical report must be reproduced in its entirety.

Eagle Environmental Consulting, LLC
 8000 W 44th Ave
 Wheat Ridge CO 80033

Andrew Newberry
 Project Number: [none]
 Project: Noble - Frank CC #7-19

EPA 8270E (SW846) - Semivolatile Organic Compounds - Quality Control
Origins Laboratory, Inc.

| Analyte | Result | Reporting Limit | Units | Spike Level | Source Result | %REC | %REC Limits | RPD | RPD Limit | Notes |
|---------|--------|-----------------|-------|-------------|---------------|------|-------------|-----|-----------|-------|
|---------|--------|-----------------|-------|-------------|---------------|------|-------------|-----|-----------|-------|

Batch B4B2822 - EPA 3580

LCS (B4B2822-BS1)

Prepared: 02/28/2024 Analyzed: 02/29/2024

| | | | | | | | | | | |
|---------------------------------|-------|-------|-------|-------|--|------|--------|--|--|--|
| Benzo (a) anthracene | 0.191 | 0.005 | mg/kg | 0.200 | | 95.7 | 70-130 | | | |
| Benzo (a) pyrene | 0.186 | 0.020 | " | 0.200 | | 93.2 | 70-130 | | | |
| Benzo (b) fluoranthene | 0.187 | 0.020 | " | 0.200 | | 93.5 | 70-130 | | | |
| Benzo (g,h,i) perylene | 0.183 | 0.020 | " | 0.200 | | 91.5 | 70-130 | | | |
| Benzo (k) fluoranthene | 0.178 | 0.020 | " | 0.200 | | 88.9 | 70-130 | | | |
| Chrysene | 0.182 | 0.020 | " | 0.200 | | 91.0 | 70-130 | | | |
| Dibenz (a,h) anthracene | 0.185 | 0.020 | " | 0.200 | | 92.4 | 70-130 | | | |
| Fluoranthene | 0.165 | 0.020 | " | 0.200 | | 82.7 | 70-130 | | | |
| Fluorene | 0.182 | 0.020 | " | 0.200 | | 91.1 | 70-130 | | | |
| Indeno (1,2,3-cd) pyrene | 0.190 | 0.020 | " | 0.200 | | 95.0 | 70-130 | | | |
| Naphthalene | 0.184 | 0.002 | " | 0.200 | | 92.1 | 70-130 | | | |
| Phenanthrene | 0.166 | 0.020 | " | 0.200 | | 83.2 | 70-130 | | | |
| Pyrene | 0.176 | 0.020 | " | 0.200 | | 87.8 | 70-130 | | | |
| Surrogate: Fluorene-d10 | 200 | | ug/kg | 200 | | 100 | 60-130 | | | |
| Surrogate: Anthracene-d10 | 190 | | " | 200 | | 93.5 | 60-130 | | | |
| Surrogate: Pyrene-d10 | 200 | | " | 200 | | 99.3 | 60-130 | | | |
| Surrogate: Benzo (a) pyrene-d12 | 210 | | " | 200 | | 104 | 60-130 | | | |

Matrix Spike (B4B2822-MS1)

Source: Y402568-01

Prepared: 02/28/2024 Analyzed: 02/29/2024

| | | | | | | | | | | |
|------------------------|-------|-------|-------|-------|-------|------|--------|--|--|--|
| 1-Methylnaphthalene | 0.198 | 0.002 | mg/kg | 0.200 | 0.012 | 92.7 | 70-130 | | | |
| 2-Methylnaphthalene | 0.225 | 0.002 | " | 0.200 | 0.026 | 99.5 | 70-130 | | | |
| Acenaphthene | 0.183 | 0.020 | " | 0.200 | 0.002 | 90.8 | 70-130 | | | |
| Anthracene | 0.169 | 0.020 | " | 0.200 | ND | 84.7 | 70-130 | | | |
| Benzo (a) anthracene | 0.189 | 0.005 | " | 0.200 | 0.001 | 93.9 | 70-130 | | | |
| Benzo (a) pyrene | 0.191 | 0.020 | " | 0.200 | ND | 95.3 | 70-130 | | | |
| Benzo (b) fluoranthene | 0.187 | 0.020 | " | 0.200 | ND | 93.6 | 70-130 | | | |
| Benzo (g,h,i) perylene | 0.185 | 0.020 | " | 0.200 | ND | 92.4 | 70-130 | | | |

Origins Laboratory, Inc.



The results in this report apply to the samples analyzed in accordance with the chain of custody document. This analytical report must be reproduced in its entirety.

Eagle Environmental Consulting, LLC
 8000 W 44th Ave
 Wheat Ridge CO 80033

Andrew Newberry
 Project Number: [none]
 Project: Noble - Frank CC #7-19

EPA 8270E (SW846) - Semivolatile Organic Compounds - Quality Control
Origins Laboratory, Inc.

| Analyte | Result | Reporting Limit | Units | Spike Level | Source Result | %REC | %REC Limits | RPD | RPD Limit | Notes |
|---------|--------|-----------------|-------|-------------|---------------|------|-------------|-----|-----------|-------|
|---------|--------|-----------------|-------|-------------|---------------|------|-------------|-----|-----------|-------|

Batch B4B2822 - EPA 3580

| Matrix Spike (B4B2822-MS1) | | Source: Y402568-01 | | | Prepared: 02/28/2024 Analyzed: 02/29/2024 | | | | | |
|-----------------------------------|-------|---------------------------|-------|-------|-------------------------------------------|------|--------|--|--|--|
| Benzo (k) fluoranthene | 0.171 | 0.020 | mg/kg | 0.200 | ND | 85.5 | 70-130 | | | |
| Chrysene | 0.185 | 0.020 | " | 0.200 | 0.0005 | 92.1 | 70-130 | | | |
| Dibenz (a,h) anthracene | 0.187 | 0.020 | " | 0.200 | ND | 93.7 | 70-130 | | | |
| Fluoranthene | 0.166 | 0.020 | " | 0.200 | ND | 83.2 | 70-130 | | | |
| Fluorene | 0.183 | 0.020 | " | 0.200 | 0.002 | 90.1 | 70-130 | | | |
| Indeno (1,2,3-cd) pyrene | 0.192 | 0.020 | " | 0.200 | ND | 96.0 | 70-130 | | | |
| Naphthalene | 0.193 | 0.002 | " | 0.200 | 0.008 | 92.3 | 70-130 | | | |
| Phenanthrene | 0.173 | 0.020 | " | 0.200 | 0.003 | 85.1 | 70-130 | | | |
| Pyrene | 0.168 | 0.020 | " | 0.200 | 0.0006 | 83.9 | 70-130 | | | |
| Surrogate: Fluorene-d10 | 200 | | ug/kg | 200 | | 101 | 60-130 | | | |
| Surrogate: Anthracene-d10 | 190 | | " | 200 | | 94.3 | 60-130 | | | |
| Surrogate: Pyrene-d10 | 190 | | " | 200 | | 95.9 | 60-130 | | | |
| Surrogate: Benzo (a) pyrene-d12 | 210 | | " | 200 | | 104 | 60-130 | | | |

| Matrix Spike Dup (B4B2822-MSD1) | | Source: Y402568-01 | | | Prepared: 02/28/2024 Analyzed: 02/29/2024 | | | | | |
|----------------------------------------|-------|---------------------------|-------|-------|-------------------------------------------|------|--------|---------|----|--|
| 1-Methylnaphthalene | 0.189 | 0.002 | mg/kg | 0.200 | 0.012 | 88.1 | 70-130 | 4.76 | 20 | |
| 2-Methylnaphthalene | 0.201 | 0.002 | " | 0.200 | 0.026 | 87.5 | 70-130 | 11.3 | 20 | |
| Acenaphthene | 0.179 | 0.020 | " | 0.200 | 0.002 | 88.4 | 70-130 | 2.63 | 20 | |
| Anthracene | 0.169 | 0.020 | " | 0.200 | ND | 84.7 | 70-130 | 0.00685 | 20 | |
| Benzo (a) anthracene | 0.179 | 0.005 | " | 0.200 | 0.001 | 89.0 | 70-130 | 5.36 | 20 | |
| Benzo (a) pyrene | 0.180 | 0.020 | " | 0.200 | ND | 90.2 | 70-130 | 5.48 | 20 | |
| Benzo (b) fluoranthene | 0.174 | 0.020 | " | 0.200 | ND | 87.0 | 70-130 | 7.35 | 20 | |
| Benzo (g,h,i) perylene | 0.180 | 0.020 | " | 0.200 | ND | 89.8 | 70-130 | 2.81 | 20 | |
| Benzo (k) fluoranthene | 0.170 | 0.020 | " | 0.200 | ND | 84.9 | 70-130 | 0.714 | 20 | |
| Chrysene | 0.184 | 0.020 | " | 0.200 | 0.0005 | 91.6 | 70-130 | 0.559 | 20 | |
| Dibenz (a,h) anthracene | 0.178 | 0.020 | " | 0.200 | ND | 89.0 | 70-130 | 5.09 | 20 | |
| Fluoranthene | 0.166 | 0.020 | " | 0.200 | ND | 82.9 | 70-130 | 0.388 | 20 | |

Origins Laboratory, Inc.



The results in this report apply to the samples analyzed in accordance with the chain of custody document. This analytical report must be reproduced in its entirety.

Eagle Environmental Consulting, LLC
 8000 W 44th Ave
 Wheat Ridge CO 80033

Andrew Newberry
 Project Number: [none]
 Project: Noble - Frank CC #7-19

EPA 8270E (SW846) - Semivolatile Organic Compounds - Quality Control
Origins Laboratory, Inc.

| Analyte | Result | Reporting Limit | Units | Spike Level | Source Result | %REC | %REC Limits | RPD | RPD Limit | Notes |
|---------|--------|-----------------|-------|-------------|---------------|------|-------------|-----|-----------|-------|
|---------|--------|-----------------|-------|-------------|---------------|------|-------------|-----|-----------|-------|

Batch B4B2822 - EPA 3580

| Matrix Spike Dup (B4B2822-MSD1) | Source: Y402568-01 | | | Prepared: 02/28/2024 Analyzed: 02/29/2024 | | | | | | |
|---------------------------------|--------------------|-------|-------|-------------------------------------------|--------|------|--------|-------|----|--|
| Fluorene | 0.180 | 0.020 | mg/kg | 0.200 | 0.002 | 89.0 | 70-130 | 1.25 | 20 | |
| Indeno (1,2,3-cd) pyrene | 0.182 | 0.020 | " | 0.200 | ND | 91.0 | 70-130 | 5.37 | 20 | |
| Naphthalene | 0.190 | 0.002 | " | 0.200 | 0.008 | 90.9 | 70-130 | 1.49 | 20 | |
| Phenanthrene | 0.167 | 0.020 | " | 0.200 | 0.003 | 81.9 | 70-130 | 3.72 | 20 | |
| Pyrene | 0.167 | 0.020 | " | 0.200 | 0.0006 | 83.3 | 70-130 | 0.699 | 20 | |
| Surrogate: Fluorene-d10 | 200 | | ug/kg | 200 | | 100 | 60-130 | | | |
| Surrogate: Anthracene-d10 | 190 | | " | 200 | | 94.1 | 60-130 | | | |
| Surrogate: Pyrene-d10 | 190 | | " | 200 | | 95.0 | 60-130 | | | |
| Surrogate: Benzo (a) pyrene-d12 | 210 | | " | 200 | | 104 | 60-130 | | | |

Origins Laboratory, Inc.



The results in this report apply to the samples analyzed in accordance with the chain of custody document. This analytical report must be reproduced in its entirety.

Eagle Environmental Consulting, LLC
 8000 W 44th Ave
 Wheat Ridge CO 80033

Andrew Newberry
 Project Number: [none]
 Project: Noble - Frank CC #7-19

Classical Chemistry Parameters - Quality Control
Origins Laboratory, Inc.

| Analyte | Result | Reporting Limit | Units | Spike Level | Source Result | %REC | %REC Limits | RPD | RPD Limit | Notes |
|---------|--------|-----------------|-------|-------------|---------------|------|-------------|-----|-----------|-------|
|---------|--------|-----------------|-------|-------------|---------------|------|-------------|-----|-----------|-------|

Batch B4B2605 - Saturated Paste Metals

Blank (B4B2605-BLK1)

Prepared: 02/26/2024 Analyzed: 02/29/2024

| | | | | | | | | | | |
|---------------|----|--------|------|--|--|--|--|--|--|--|
| Calcium PPM | ND | 10.0 | mg/L | | | | | | | |
| SAR | ND | 0.0100 | SAR | | | | | | | |
| Magnesium PPM | ND | 10.0 | mg/L | | | | | | | |
| Sodium PPM | ND | 10.0 | " | | | | | | | |

Duplicate (B4B2605-DUP1)

Source: Y402550-12

Prepared: 02/26/2024 Analyzed: 02/29/2024

| | | | | | | | | | | |
|---------------|------|--------|------|--|------|--|--|------|-----|--|
| Calcium PPM | 75.8 | 10.0 | mg/L | | 84.2 | | | 10.6 | 50 | |
| SAR | ND | 0.0100 | SAR | | 3.74 | | | | 200 | |
| Magnesium PPM | 57.7 | 10.0 | mg/L | | 65.0 | | | 11.9 | 50 | |
| Sodium PPM | 177 | 10.0 | " | | 188 | | | 5.86 | 50 | |

Batch B4B2611 - DTPA Sorbitol Preparation

Blank (B4B2611-BLK1)

Prepared: 02/26/2024 Analyzed: 02/28/2024

| | | | | | | | | | | |
|-------|----|-------|------|--|--|--|--|--|--|--|
| Boron | ND | 0.100 | mg/L | | | | | | | |
|-------|----|-------|------|--|--|--|--|--|--|--|

Duplicate (B4B2611-DUP1)

Source: Y402540-02

Prepared: 02/26/2024 Analyzed: 02/28/2024

| | | | | | | | | | | |
|-------|-------|--------|------|--|-------|--|--|------|----|--|
| Boron | 0.634 | 0.0995 | mg/L | | 0.665 | | | 4.70 | 50 | |
|-------|-------|--------|------|--|-------|--|--|------|----|--|

Origins Laboratory, Inc.



The results in this report apply to the samples analyzed in accordance with the chain of custody document. This analytical report must be reproduced in its entirety.

Eagle Environmental Consulting, LLC
 8000 W 44th Ave
 Wheat Ridge CO 80033

Andrew Newberry
 Project Number: [none]
 Project: Noble - Frank CC #7-19

Saturated Paste - Quality Control
Origins Laboratory, Inc.

| Analyte | Result | Reporting Limit | Units | Spike Level | Source Result | %REC | %REC Limits | RPD | RPD Limit | Notes |
|----------------------------------------------|--------|-----------------|----------|-------------|---------------------------------------------------------------------|------|-------------|------|-----------|-------|
| Batch B4B2614 - Saturated Paste pH/EC | | | | | | | | | | |
| Blank (B4B2614-BLK1) | | | | | Prepared: 02/26/2024 Analyzed: 02/27/2024 | | | | | |
| Specific Conductance (EC) | ND | 0.00500 | mmhos/cm | | | | | | | |
| Duplicate (B4B2614-DUP1) | | | | | Source: Y402550-12 Prepared: 02/26/2024 Analyzed: 02/27/2024 | | | | | |
| pH | 7.66 | | pH Units | | 7.76 | | | 1.30 | 25 | |
| Specific Conductance (EC) | 1.56 | 0.00500 | mmhos/cm | | 1.65 | | | 5.65 | 25 | |

Origins Laboratory, Inc.



The results in this report apply to the samples analyzed in accordance with the chain of custody document. This analytical report must be reproduced in its entirety.

Eagle Environmental Consulting, LLC
 8000 W 44th Ave
 Wheat Ridge CO 80033

Andrew Newberry
 Project Number: [none]
 Project: Noble - Frank CC #7-19

Total Metals by 7196A - Quality Control
Waypoint Analytical, LLC.

| Analyte | Result | Reporting Limit | Units | Spike Level | Source Result | %REC | %REC Limits | RPD | RPD Limit | Notes |
|--------------------------|--------|--------------------------------|-------|-------------|--------------------------------|------|-------------|-----|-----------|-------|
| Batch L737330 - | | | | | | | | | | |
| DUP (L 98044-DUP) | | Source: 98044 | | | Prepared: Analyzed: 03/08/2024 | | | | | |
| Chromium, Hexavalent | ND | 0.5 | mg/Kg | | <0.500 | | - | 0 | 20 | |
| MS (L 98044-MS) | | Source: 98044 | | | Prepared: Analyzed: 03/08/2024 | | | | | |
| Chromium, Hexavalent | 29.7 | 2.5 | mg/Kg | 39.4 | < 0.244 | 75 | 75-125 | | | |
| LCS (LCS) | | Prepared: Analyzed: 03/08/2024 | | | | | | | | |
| Chromium, Hexavalent | 6.22 | 0.5 | mg/Kg | 8 | | 78 | 75-125 | | | |
| LRB (LRB) | | Prepared: Analyzed: 03/08/2024 | | | | | | | | |
| Chromium, Hexavalent | ND | 0.5 | mg/Kg | | | | - | | | |

Origins Laboratory, Inc.



The results in this report apply to the samples analyzed in accordance with the chain of custody document. This analytical report must be reproduced in its entirety.

Eagle Environmental Consulting, LLC
8000 W 44th Ave
Wheat Ridge CO 80033

Andrew Newberry
Project Number: [none]
Project: Noble - Frank CC #7-19

Notes and Definitions

U Sample is Non-Detect.

QM-07 The spike recovery was outside acceptance limits for the MS and/or MSD. The batch was accepted based on acceptable LCS recovery.

ND Analyte NOT DETECTED at or above the reporting limit

RPD Relative Percent Difference

All soil results are reported on a wet weight basis.

Calculated results may use J-flag data (instead of reported "ND") as part of calculation to provide a more accurate result.

Origins Laboratory, Inc.



The results in this report apply to the samples analyzed in accordance with the chain of custody document. This analytical report must be reproduced in its entirety.

Jordan A. Bynon, Project Manager