

WGS84 $\pm 16\text{ft}$ 40.13427, -104.90146 ft $\pm 11\text{ft}$ 4988 $^{\circ}\text{T}$ ± 14 N352



ECMC
Environmental
Field Inspection



Dechant State 3 Flowline
© 10-Oct-24 01:50:43 PM
ECMC/Environmental Inspection

WGS84 $\pm 16\text{ft}$ 40.13428, -104.90146 ft $\pm 11\text{ft}$ 4987 $^{\circ}\text{T}$ ± 14 NE27

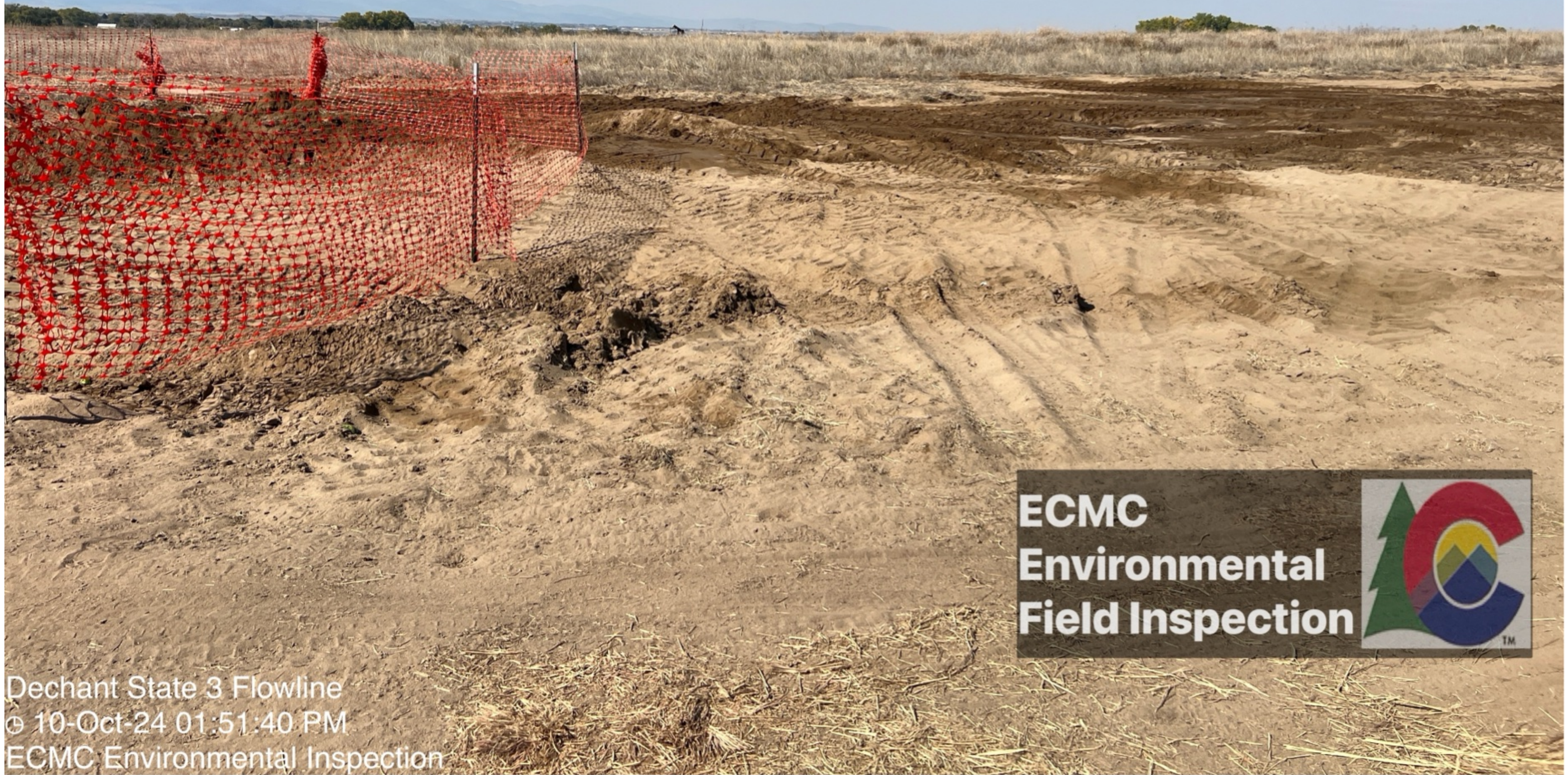


ECMC
Environmental
Field Inspection



Dechant State 3 Flowline
© 10-Oct-24 01:50:47 PM
ECMC Environmental Inspection

WGS84 40.13429, -104.90123 Δ ^{ft}_{±11ft} 4992 Δ ^{°T}_{±14} N353



ECMC
Environmental
Field Inspection



Dechant State 3 Flowline
© 10-Oct-24 01:51:40 PM
ECMC Environmental Inspection

WGS84 40.13428, -104.90124 Δ ^{ft}_{±11ft} 4991 Δ ^{°T}_{±14} NE23



ECMC
Environmental
Field Inspection



Dechant State 3 Flowline
© 10-Oct-24 01:51:42 PM
ECMC Environmental Inspection

WGS84
±16ft

40.13431, -104.90113

ft
±11ft

4988

°T
±14

NE41



ECMC
Environmental
Field Inspection



Dechant State 3 Flowline
© 10-Oct-24 01:52:11 PM
ECMC Environmental Inspection

WGS84
±16ft

40.13431, -104.90113

ft
±11ft

4987

°T
±14

NE45



ECMC
Environmental
Field Inspection



Dechant State 3 Flowline
© 10-Oct-24 01:52:16 PM
ECMC Environmental Inspection

WGS84 $\pm 16\text{ft}$ 40.13432, -104.90107 $\Delta_{\pm 11\text{ft}}^{\text{ft}}$ 4990 $\angle^{\circ, T}_{\pm 14}$ SE142



ECMC
Environmental
Field Inspection



Dechant State 3 Flowline
© 10-Oct-24 01:52:31 PM
ECMC Environmental Inspection

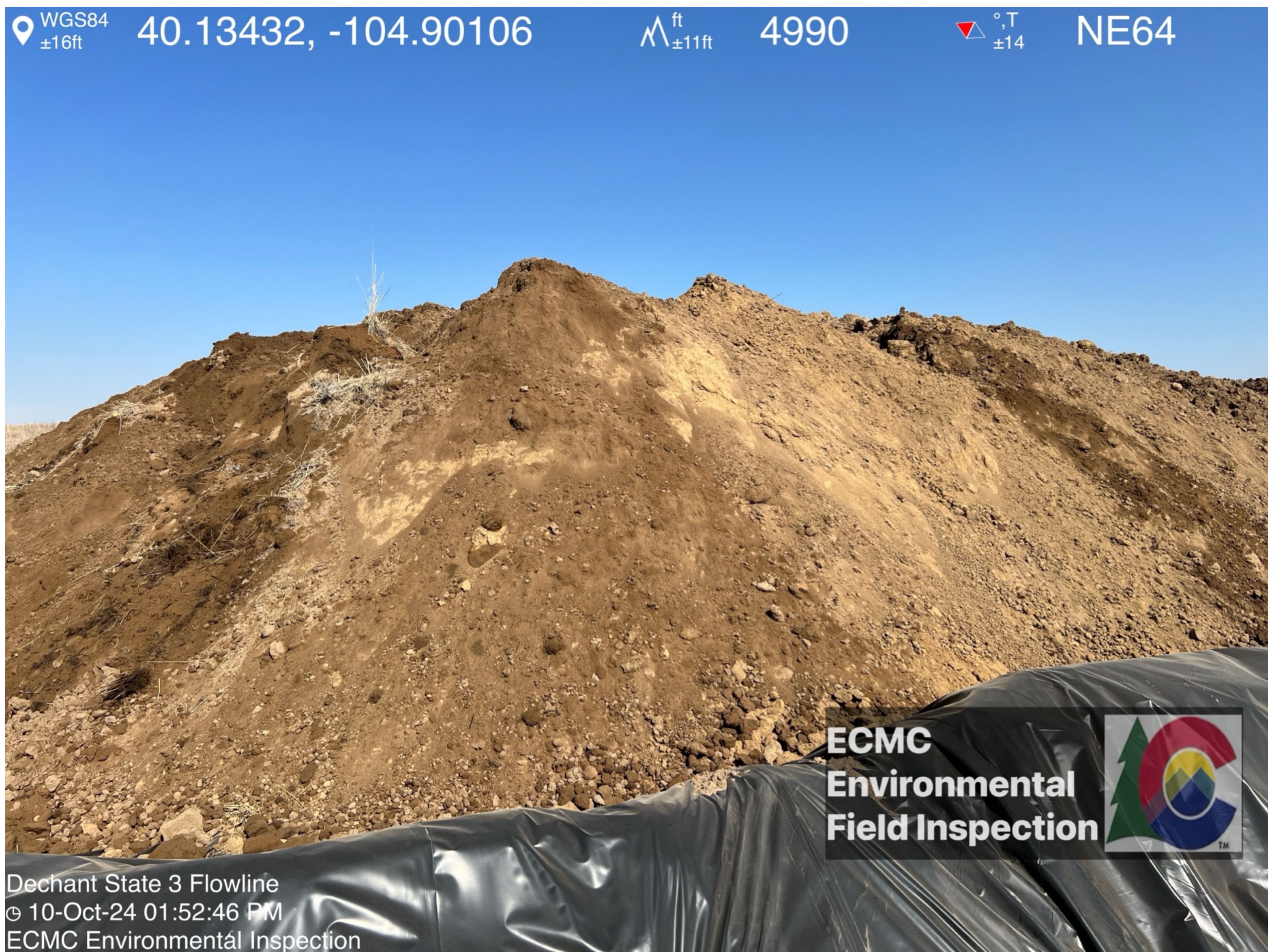
WGS84 $\pm 16\text{ft}$ 40.13432, -104.90106 $\Delta_{\pm 11\text{ft}}^{\text{ft}}$ 4992 $\angle^{\circ, T}_{\pm 14}$ NE16

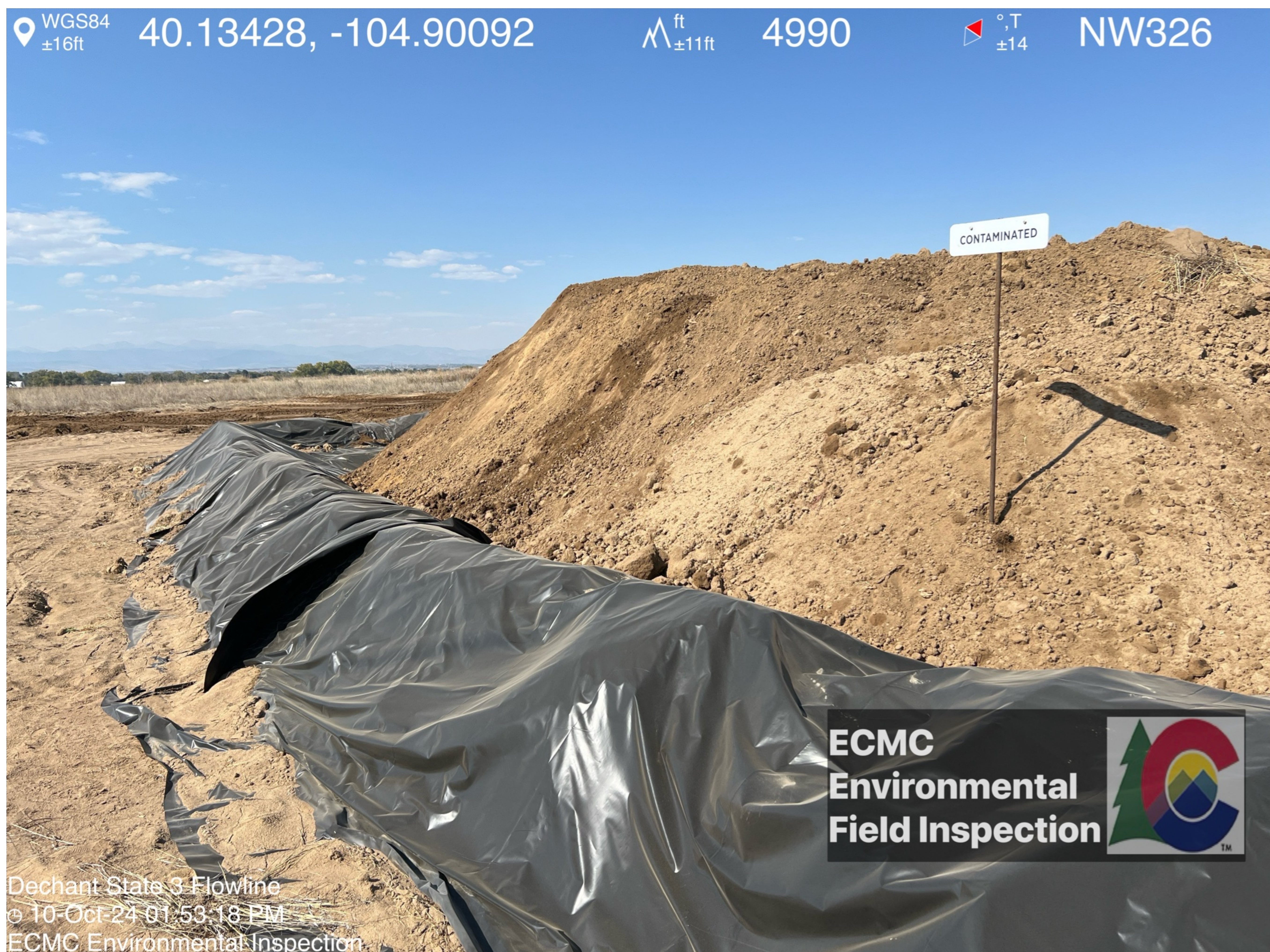
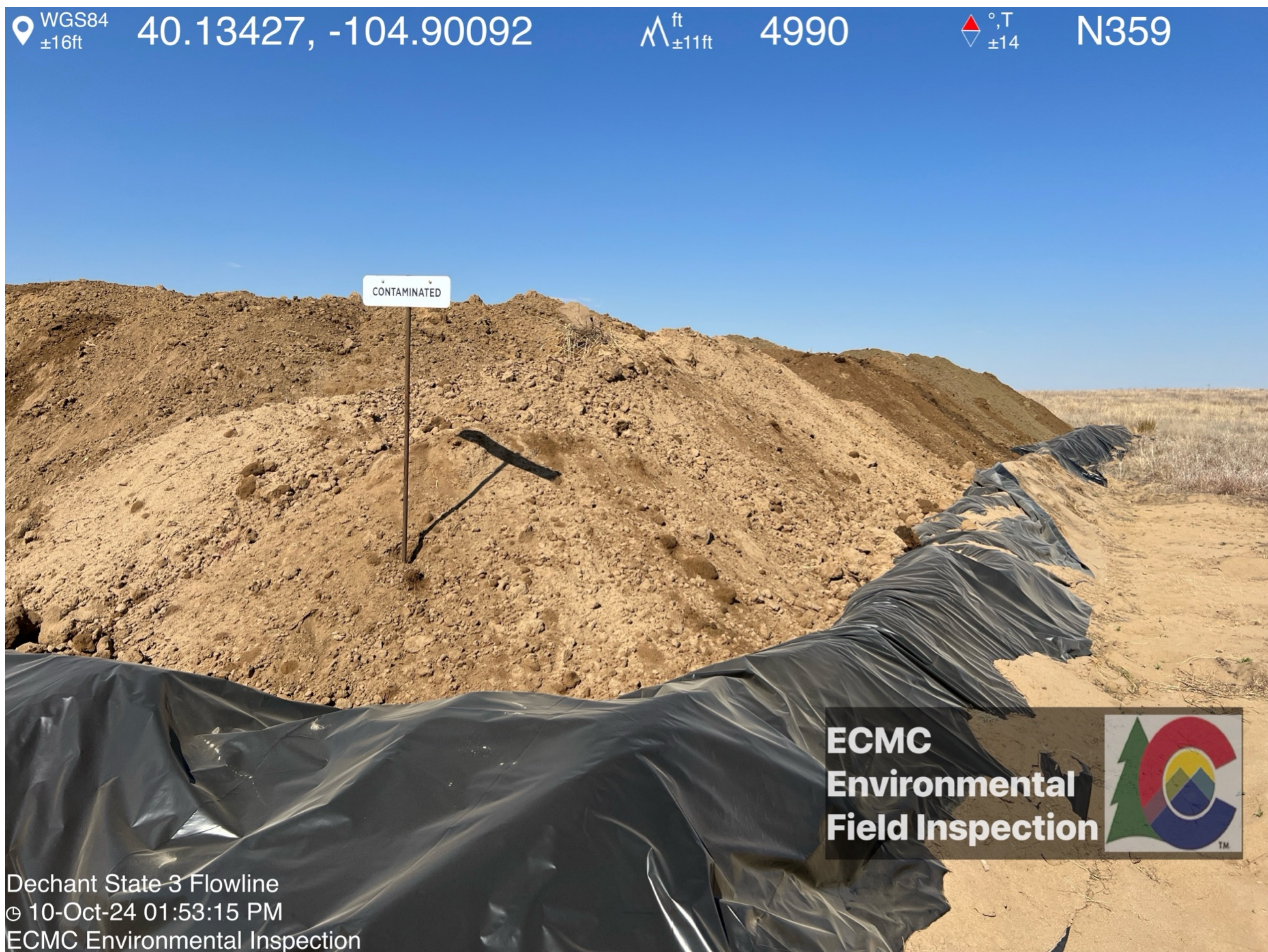


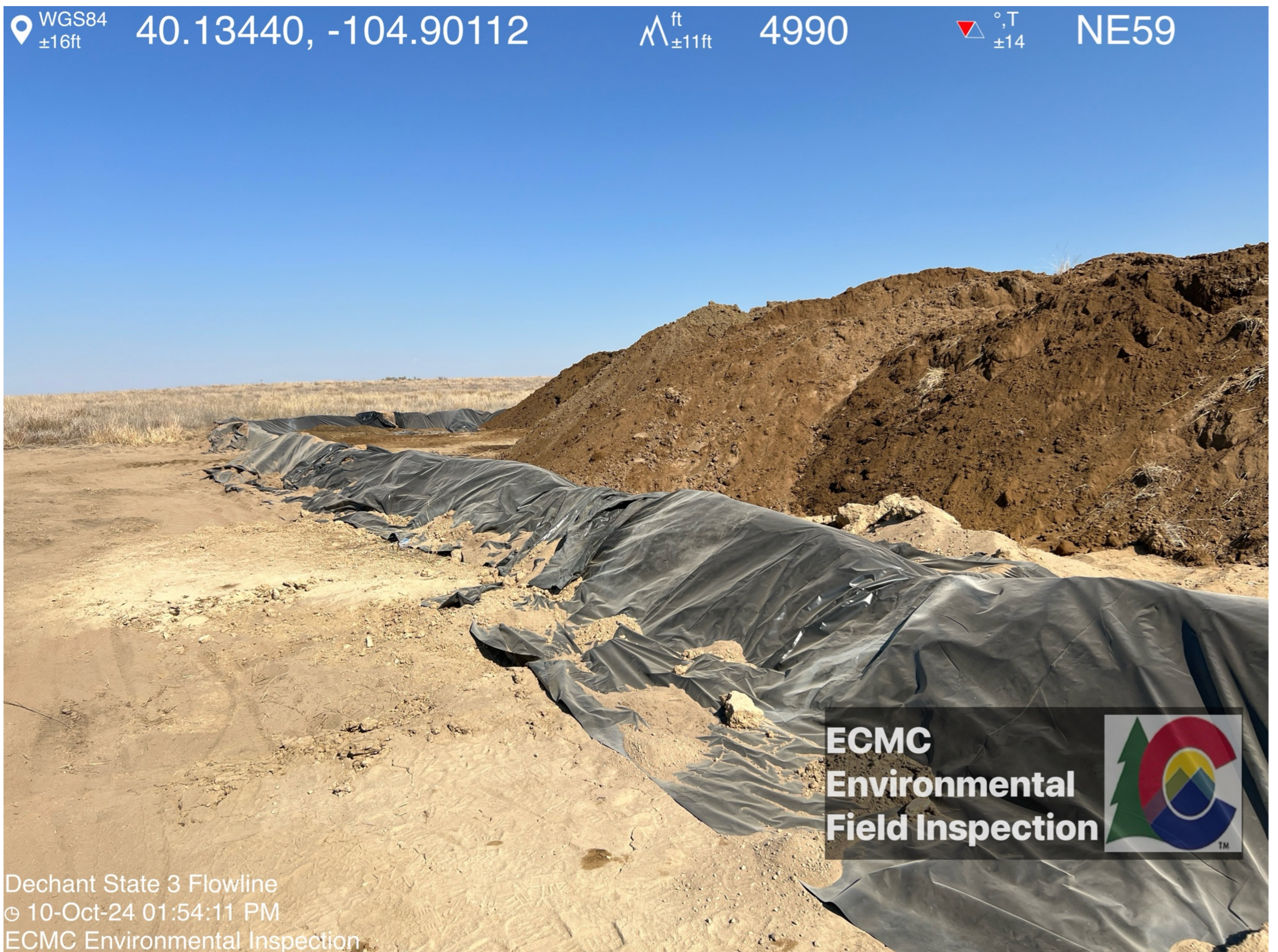
ECMC
Environmental
Field Inspection



Dechant State 3 Flowline
© 10-Oct-24 01:52:42 PM
ECMC Environmental Inspection







WGS84 $\pm 16\text{ft}$ 40.13453, -104.90100 $\Delta^{\text{ft}}_{\pm 11\text{ft}}$ 4994 $\triangle^{\circ, \text{T}}_{\pm 14}$ SE121

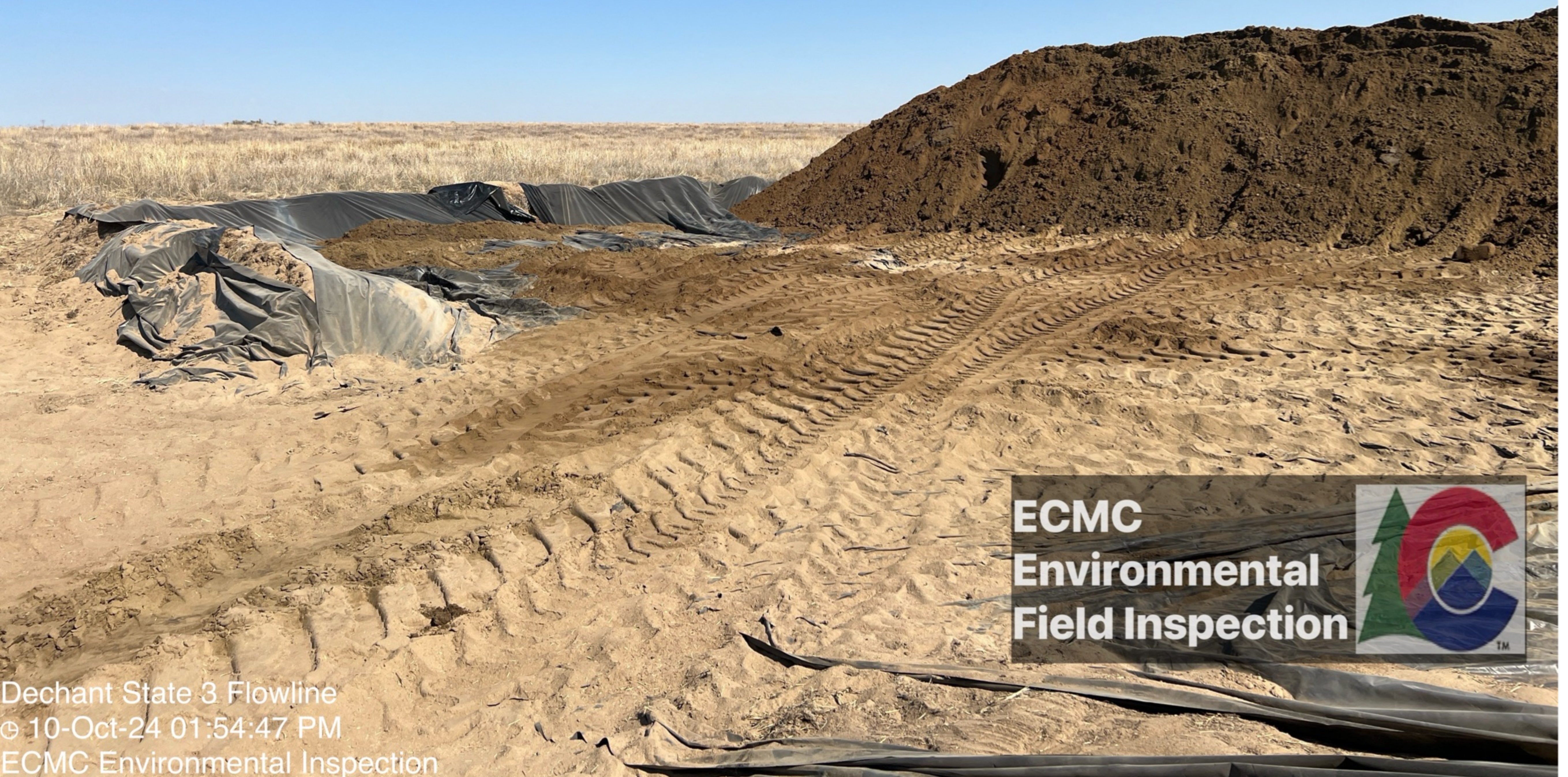


**ECMC
Environmental
Field Inspection**



Dechant State 3 Flowline
© 10-Oct-24 01:54:44 PM
ECMC Environmental Inspection

WGS84 $\pm 16\text{ft}$ 40.13454, -104.90100 $\Delta^{\text{ft}}_{\pm 11\text{ft}}$ 4995 $\triangle^{\circ, \text{T}}_{\pm 14}$ NE74



**ECMC
Environmental
Field Inspection**



Dechant State 3 Flowline
© 10-Oct-24 01:54:47 PM
ECMC Environmental Inspection

WGS84 $\pm 16\text{ft}$ 40.13455, -104.90101 $\Delta^{\text{ft}}_{\pm 11\text{ft}}$ 4993 $\triangle^{\circ, \text{T}}_{\pm 14}$ NW300



ECMC
Environmental
Field Inspection



Dechant State 3 Flowline
© 10-Oct-24 01:54:55 PM
ECMC Environmental Inspection

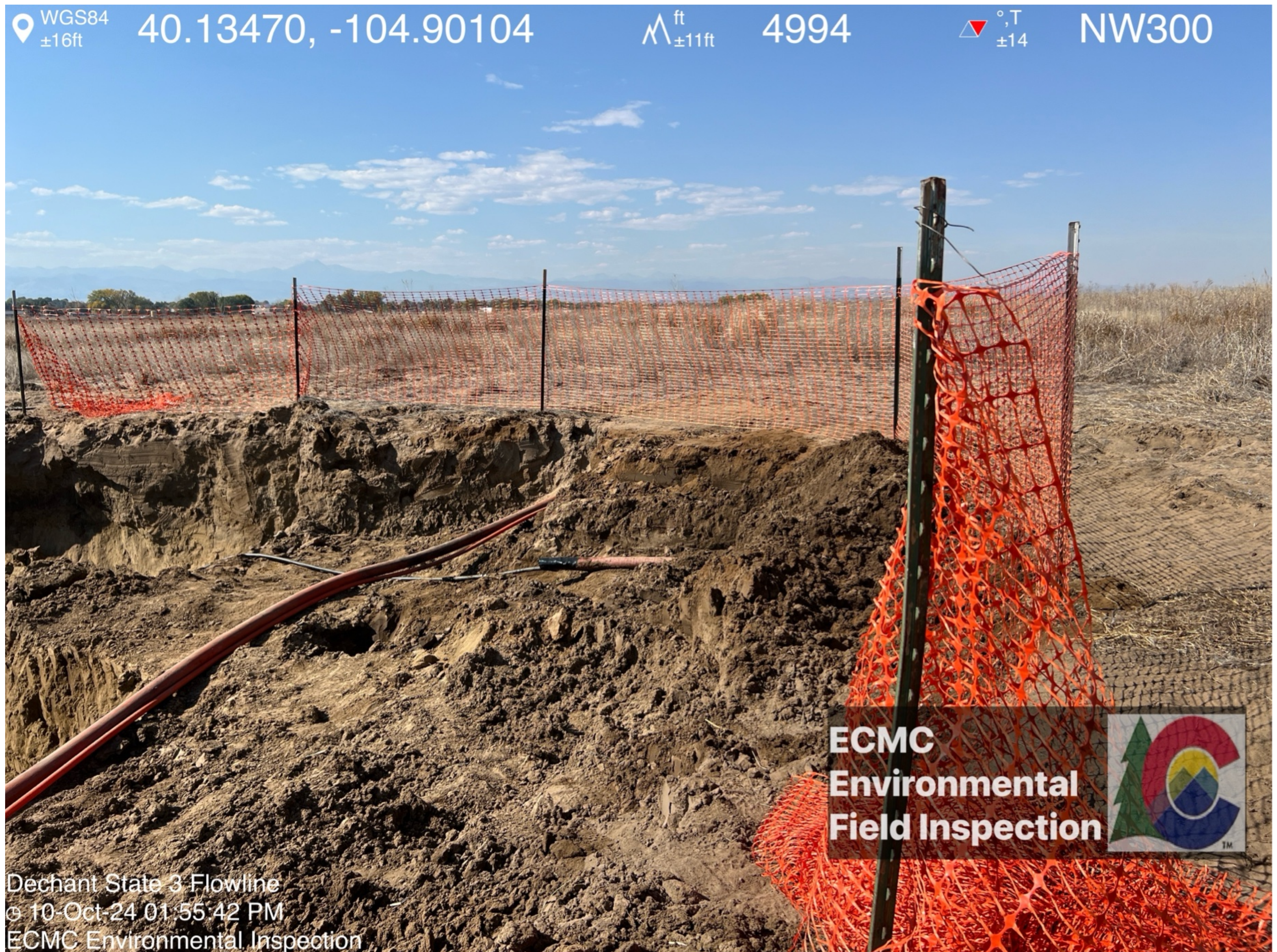
WGS84 $\pm 16\text{ft}$ 40.13466, -104.90102 $\Delta^{\text{ft}}_{\pm 11\text{ft}}$ 4994 $\triangle^{\circ, \text{T}}_{\pm 14}$ E102



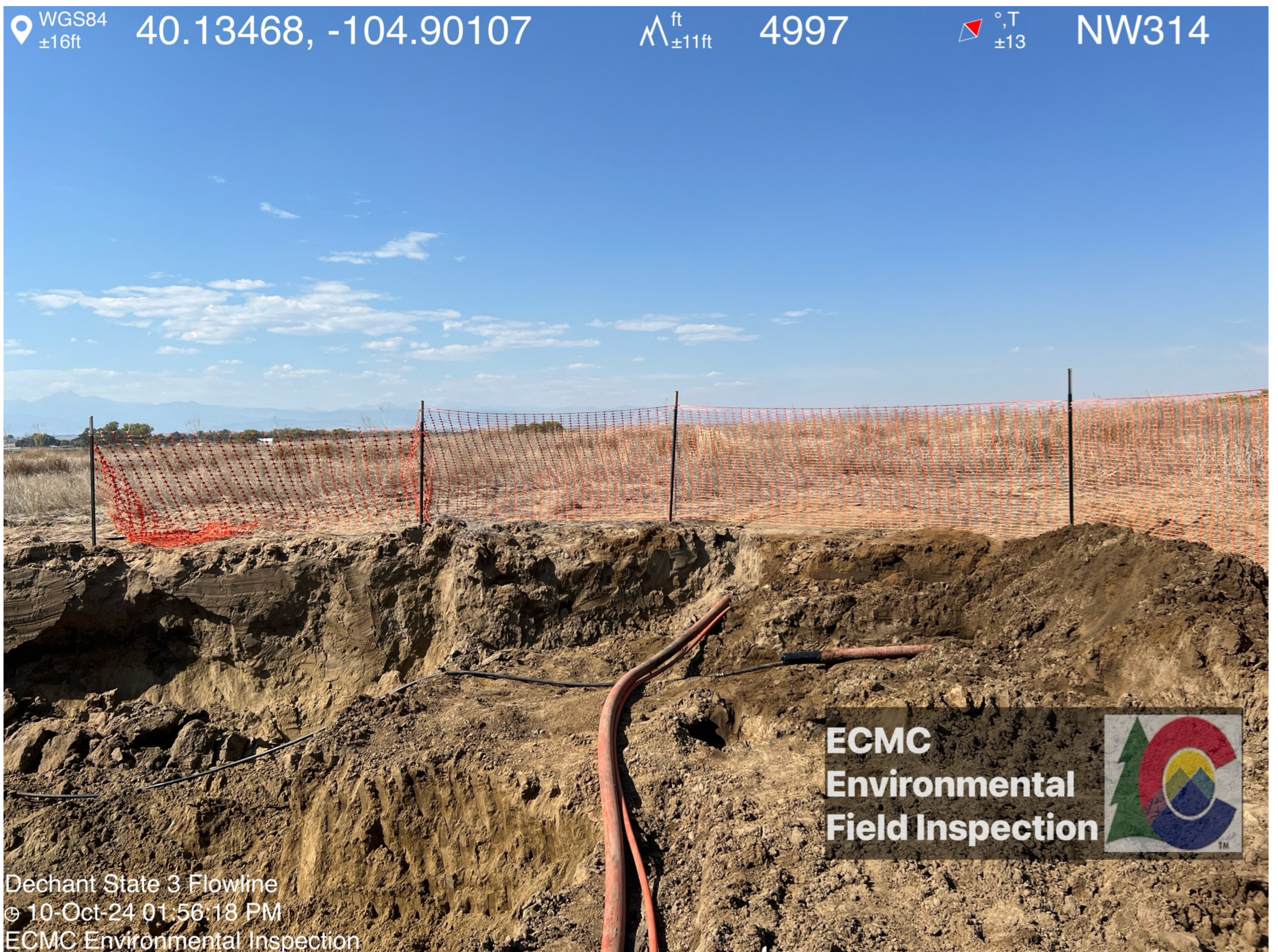
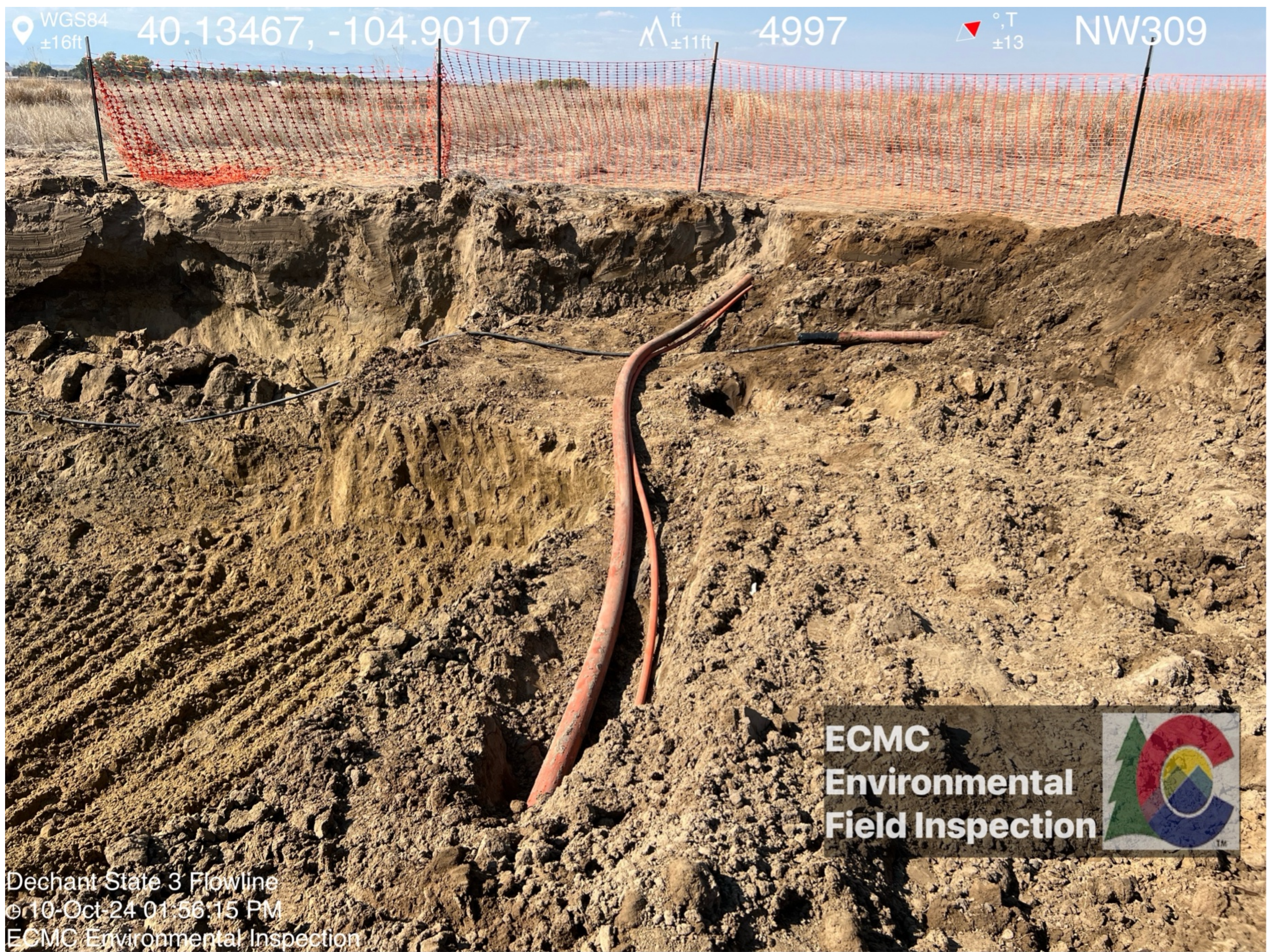
ECMC
Environmental
Field Inspection

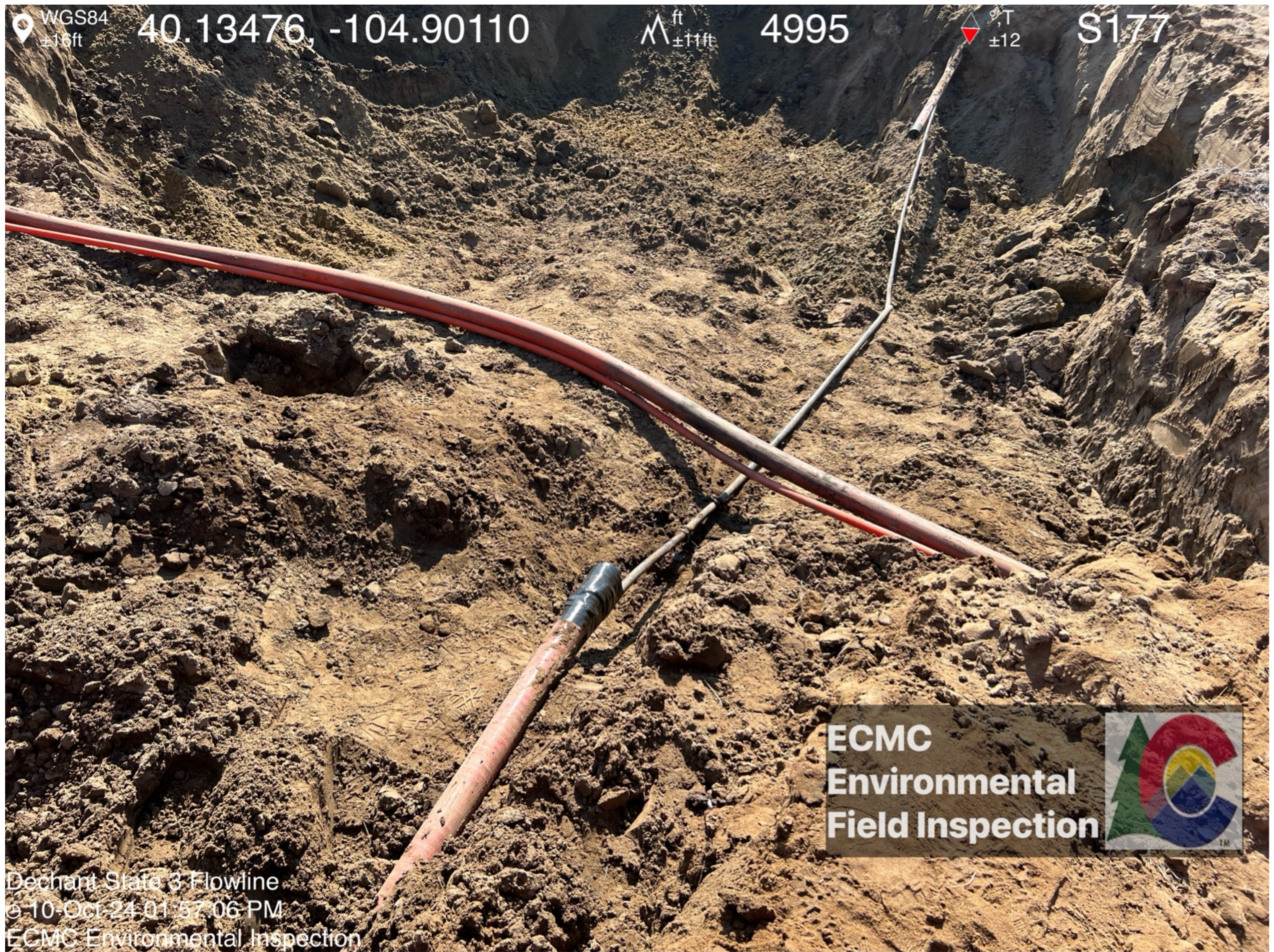


Dechant State 3 Flowline
© 10-Oct-24 01:55:21 PM
ECMC Environmental Inspection

















WGS84 $\pm 16\text{ft}$ 40.13464, -104.90128 ft $\pm 11\text{ft}$ 4995 $^{\circ}\text{T}$ ± 12 SW223



WGS84 $\pm 16\text{ft}$ 40.13464, -104.90128 ft $\pm 11\text{ft}$ 4994 $^{\circ}\text{T}$ ± 12 S167



WGS84
±16ft

40.13463, -104.90128

ft
±11ft

4994

°T
±12

SE112

