

WGS84 $\pm 16\text{ft}$ 40.13443, -104.90083 Δ ft $\pm 11\text{ft}$ 4986 \triangle $^\circ\text{T}$ ± 12 S170



ECMC
Environmental
Field Inspection



Dechant State 3 Flowline
© 15-Oct-24 10:22:11 AM
ECMC Environmental Inspection

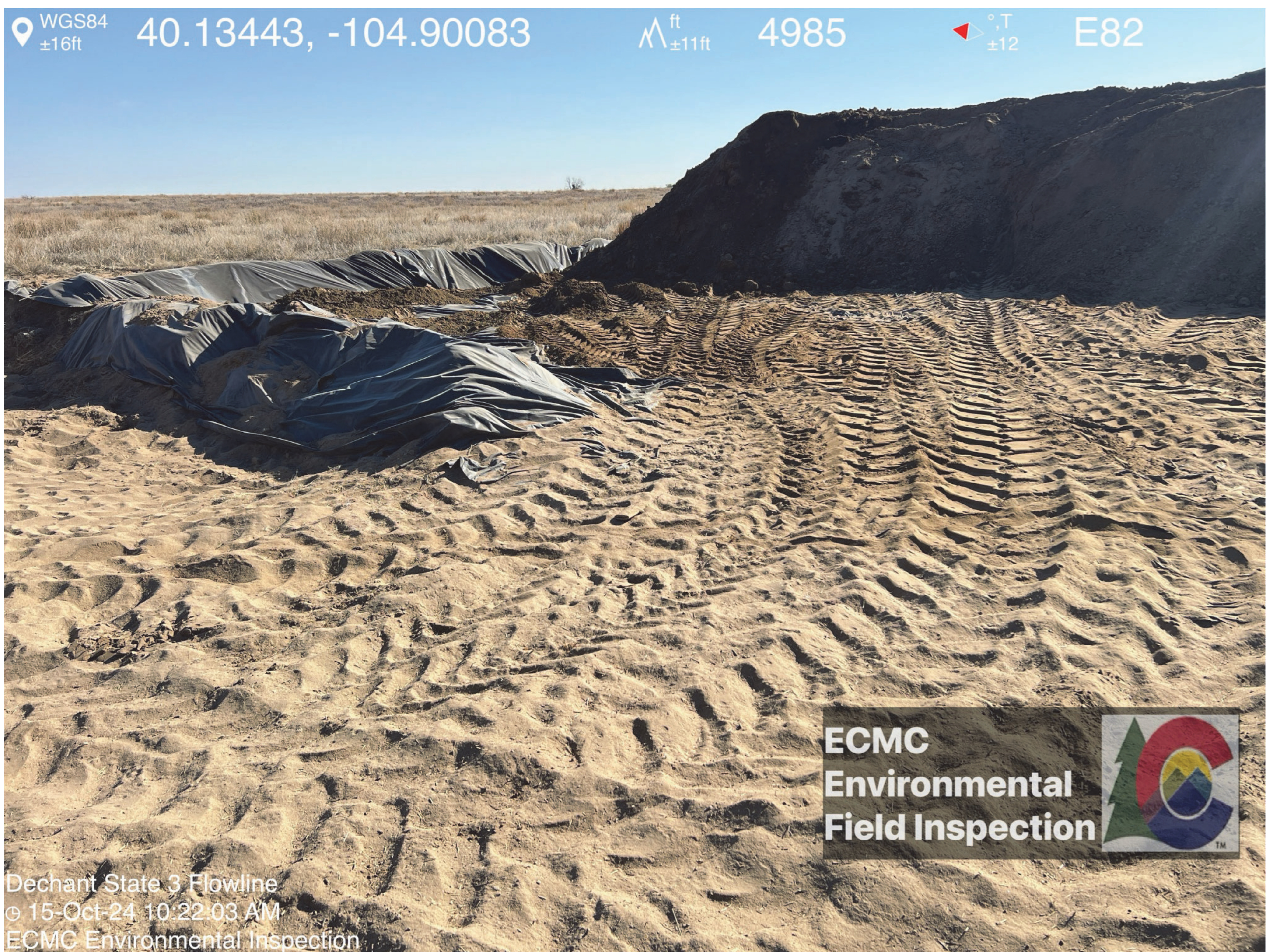
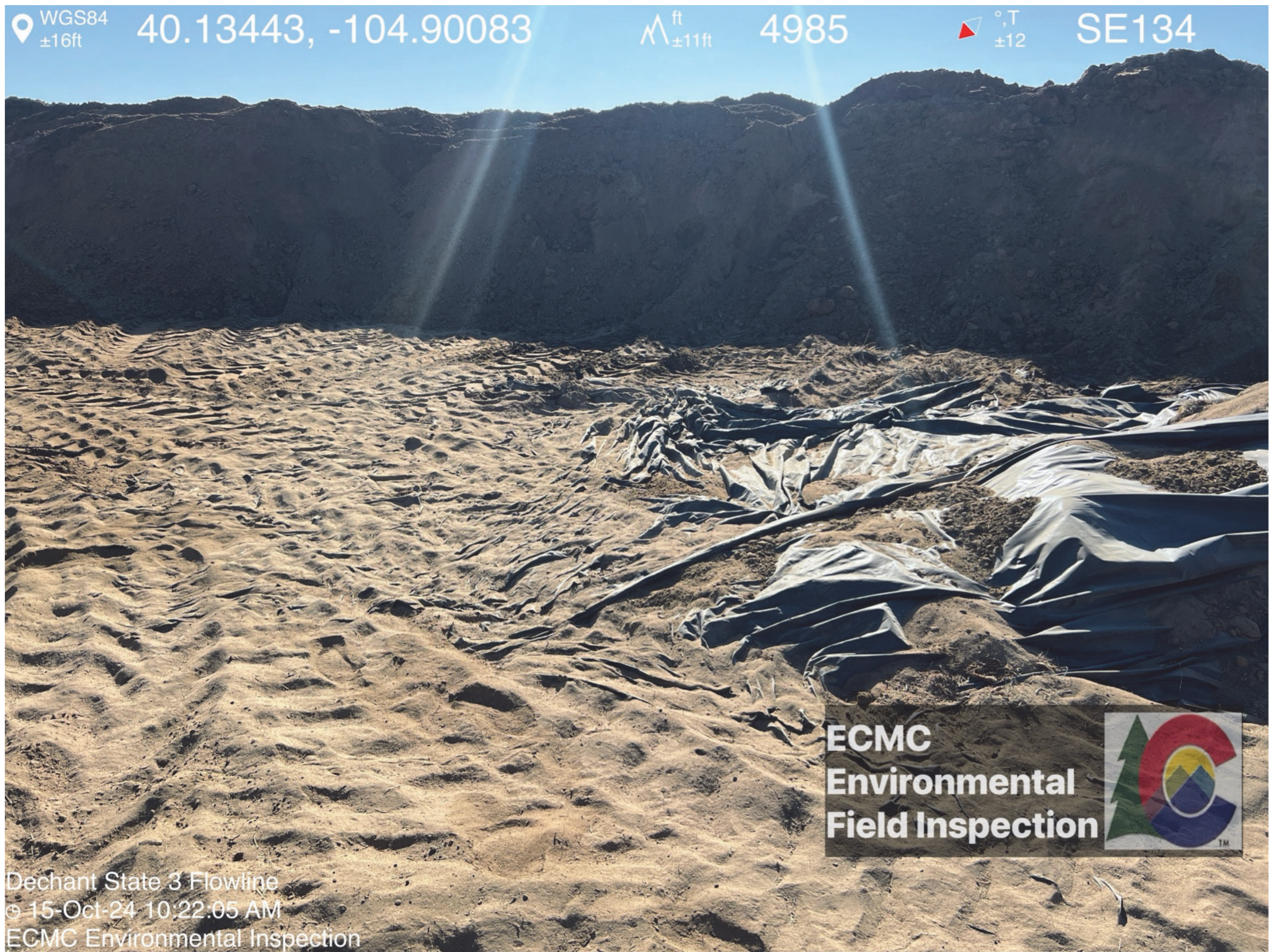
WGS84 $\pm 12\text{ft}$ 40.13127, -104.90296 Δ ft $\pm 10\text{ft}$ 4980 \triangle $^\circ\text{T}$ ± 12 N345

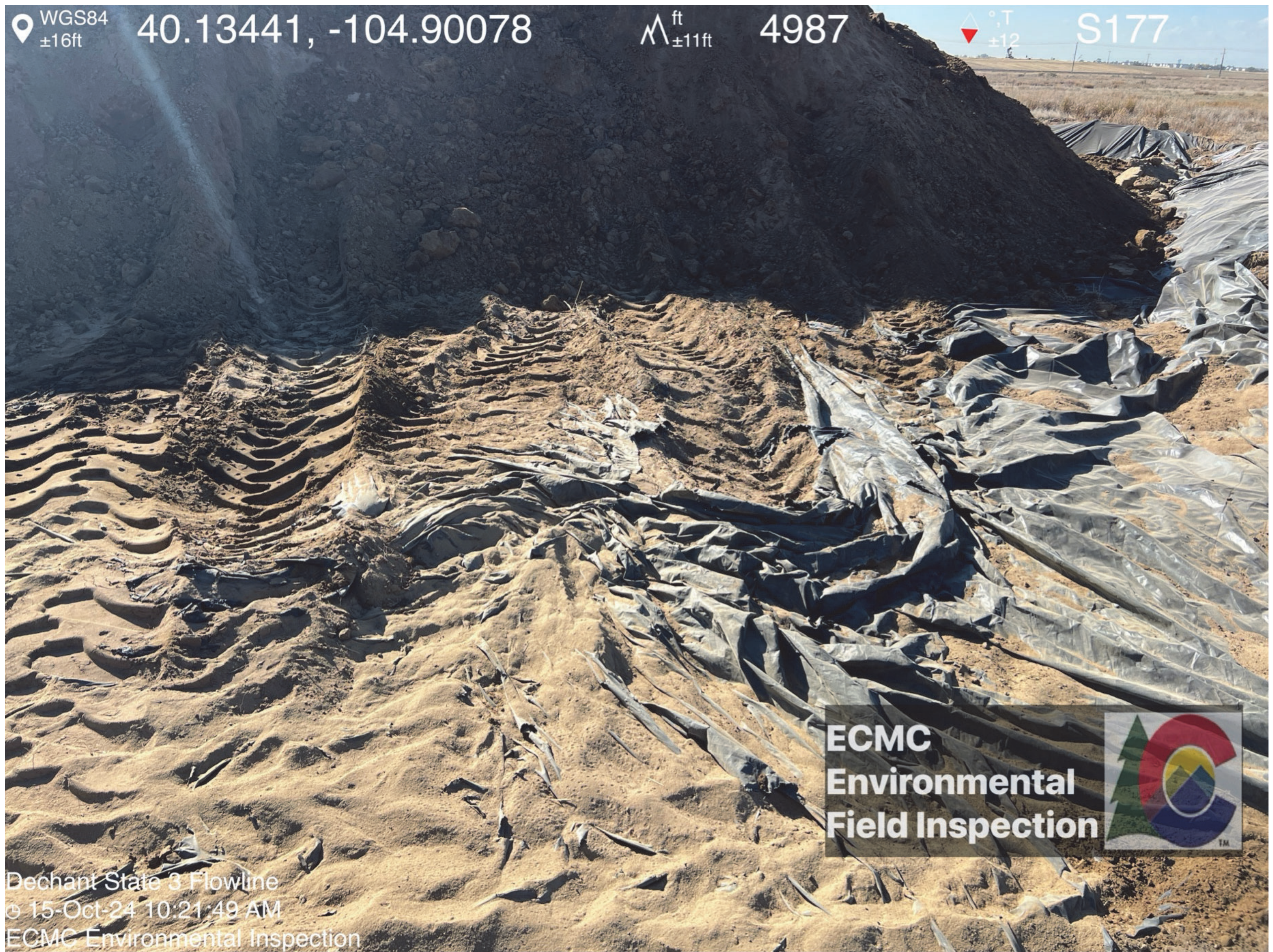


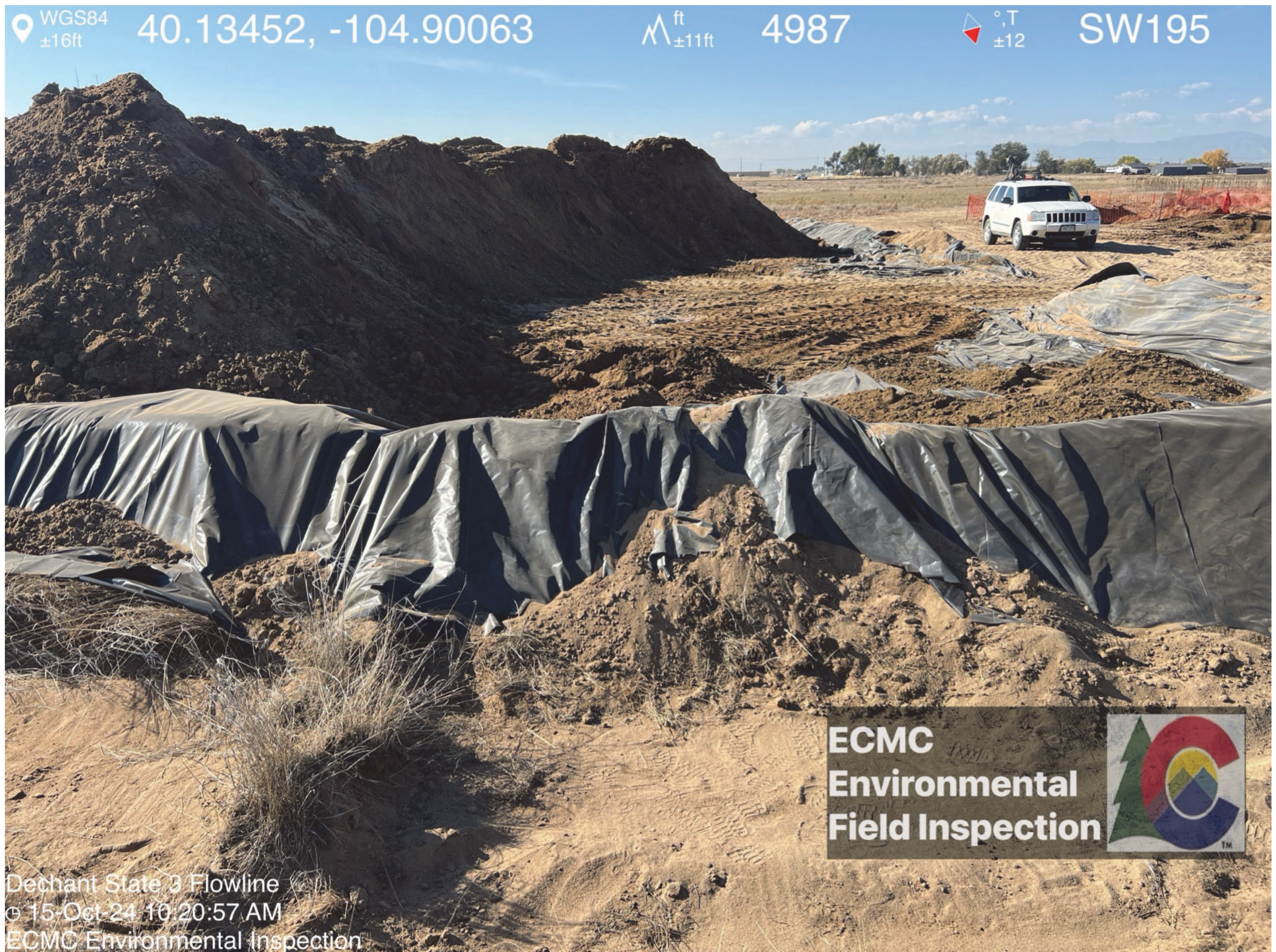
ECMC
Environmental
Field Inspection



Dechant State 3 Flowline
© 15-Oct-24 10:26:20 AM
ECMC Environmental Inspection







WGS84 $\pm 16\text{ft}$ 40.13447, -104.90054 ft $\pm 11\text{ft}$ 4989 $^{\circ}\text{T}$ ± 12 SW210

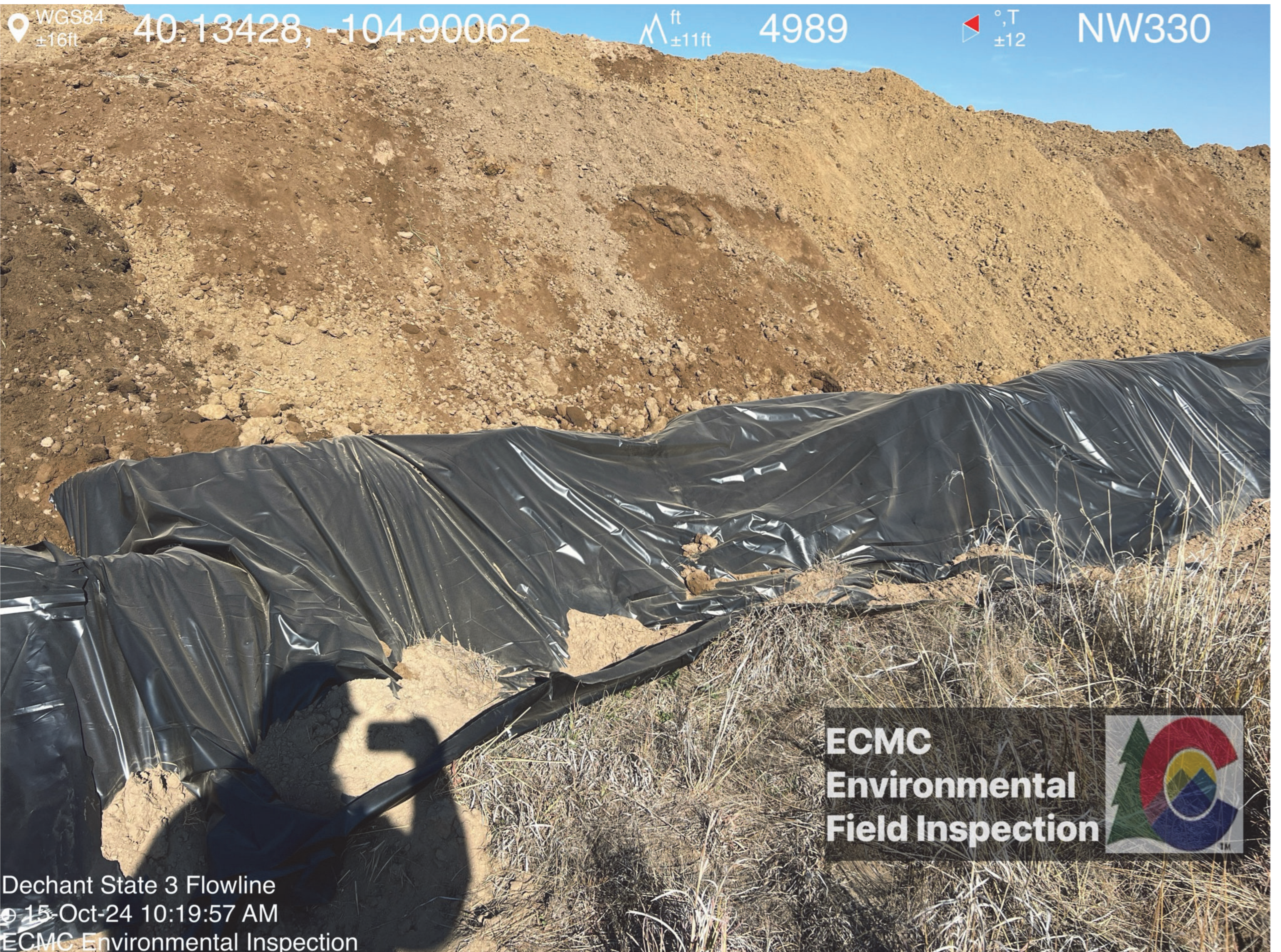


ECMC
Environmental
Field Inspection



Dechant State 3 Flowline
15-Oct-24 10:20:35 AM
ECMC Environmental Inspection

WGS84 $\pm 16\text{ft}$ 40.13428, -104.90062 ft $\pm 11\text{ft}$ 4989 $^{\circ}\text{T}$ ± 12 NW330



ECMC
Environmental
Field Inspection



Dechant State 3 Flowline
15-Oct-24 10:19:57 AM
ECMC Environmental Inspection



WGS84
±16ft

40.13436, -104.90124

ft
±11ft

4988

°T
±12

SW211



**ECMC
Environmental
Field Inspection**



Dechant State 3 Flowline
© 15-Oct-24 10:17:56 AM
ECMC Environmental Inspection

WGS84
±16ft

40.13437, -104.90123

ft
±11ft

4989

°T
±12

SE136



**ECMC
Environmental
Field Inspection**

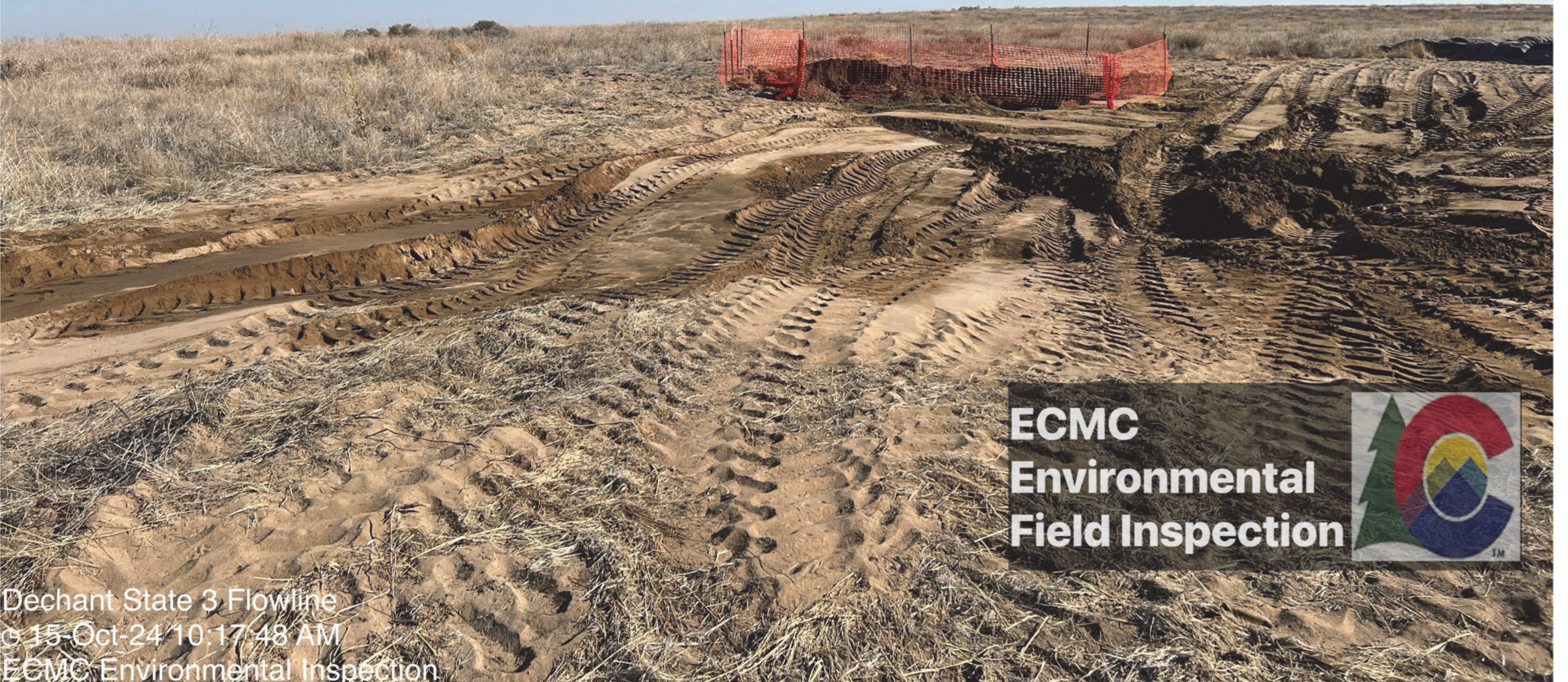


Dechant State 3 Flowline
© 15-Oct-24 10:17:53 AM
ECMC Environmental Inspection

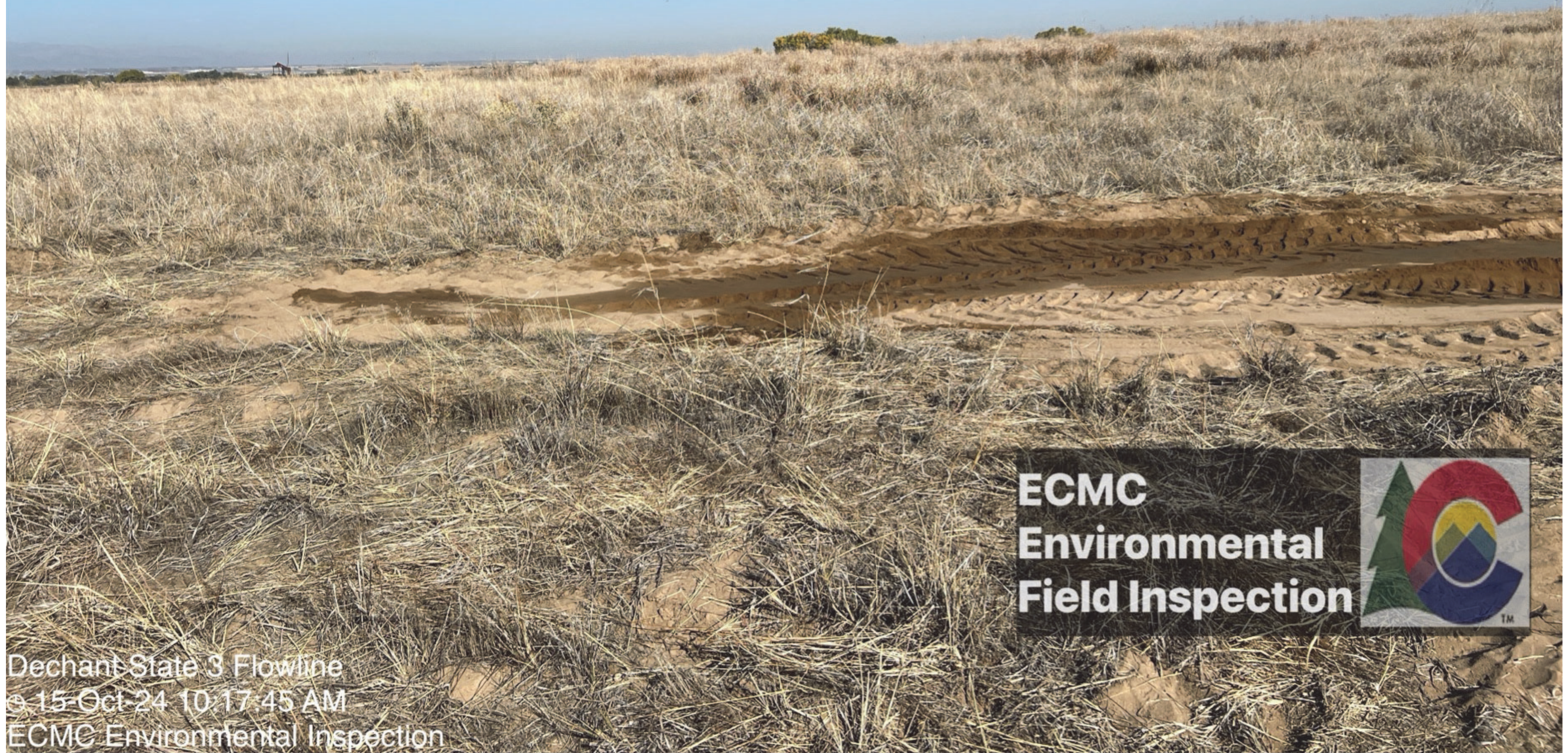
WGS84 $\pm 16\text{ft}$ 40.13437, -104.90124 Δ ft $\pm 11\text{ft}$ 4989 \angle $^{\circ}\text{T}$ ± 12 E97



WGS84 $\pm 16\text{ft}$ 40.13437, -104.90123 Δ ft $\pm 11\text{ft}$ 4990 \angle $^{\circ}\text{T}$ ± 12 NE52



WGS84 $\pm 16\text{ft}$ 40.13437, -104.90123 $\Delta^{\text{ft}}_{\pm 11\text{ft}}$ 4989 $\nabla^{\circ, T}_{\pm 12}$ N357



**ECMC
Environmental
Field Inspection**



Dechant State 3 Flowline
© 15-Oct-24 10:17:45 AM
ECMC Environmental Inspection

WGS84 $\pm 16\text{ft}$ 40.13447, -104.90119 $\Delta^{\text{ft}}_{\pm 11\text{ft}}$ 4987 $\nabla^{\circ, T}_{\pm 12}$ SW230



**ECMC
Environmental
Field Inspection**



Dechant State 3 Flowline
© 15-Oct-24 10:17:18 AM
ECMC Environmental Inspection

WGS84 40.13450, -104.90112 $\Delta_{\pm 12\text{ft}}^{\text{ft}}$ 4981 $\Delta_{\pm 12}^{\circ, \text{T}}$ SW207

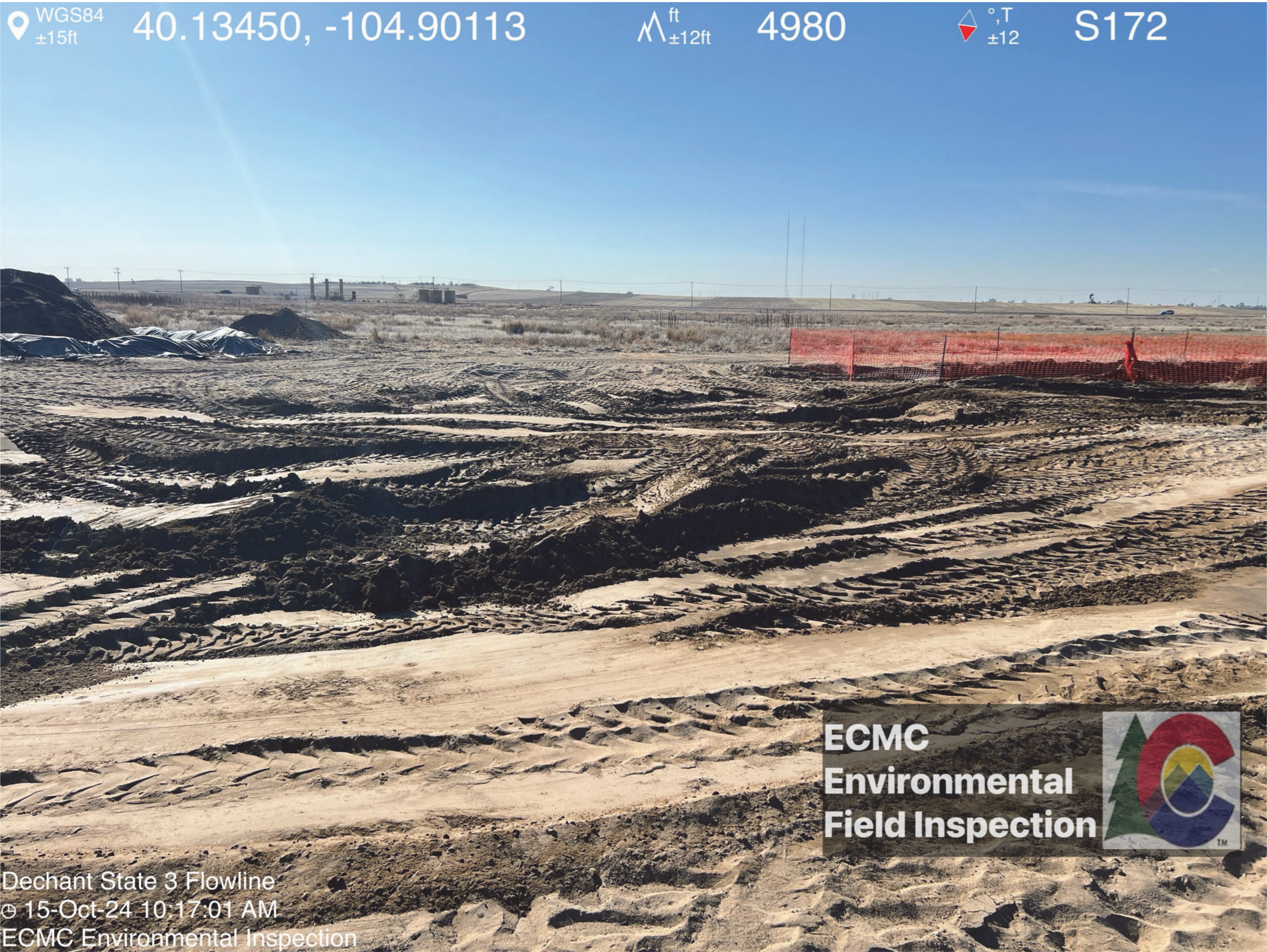


ECMC
Environmental
Field Inspection



Dechant State 3 Flowline
© 15-Oct-24 10:17:04 AM
ECMC Environmental Inspection

WGS84 40.13450, -104.90113 $\Delta_{\pm 12\text{ft}}^{\text{ft}}$ 4980 $\Delta_{\pm 12}^{\circ, \text{T}}$ S172



ECMC
Environmental
Field Inspection



Dechant State 3 Flowline
© 15-Oct-24 10:17:01 AM
ECMC Environmental Inspection

