



Company CHEVRON
Well SLW STATE PC BB18-65HN
Field WATTENBERG
County WELD **State** CO

Location: API #: 05-123-34679
 SEC 18 TWP 5 RGE 63
 Permanent Datum KB Elevation 4,590'
 Log Measured From KB
 Drilling Measured From KB
 Other Services
 Elevation
 K.B. 4,614'
 D.F. 4,613'
 G.L. 4,590'

Date 8-23-24
Run Number ONE
Depth Driller 10,986'
Depth Logger 700'
Bottom Logged Interval 700'
Top Log Interval SURFACE
Open Hole Size 13 3/4"
Type Fluid WATER
Density / Viscosity N/A
Max. Recorded Temp. N/A
Estimated Cement Top N/A
Time Well Ready 7:30
Time Logger on Bottom 8:00
Equipment Number 473
Location RIG 12
Recorded By ZION DIONNE
Witnessed By BRANDON TRACY

Borehole Record				Tubing Record			
Run Number	Bit	From	To	Size	Weight	From	To

Casing Record	Size	Mgt/Ft	Top	Bottom
Surface String	9 5/8"	36#	SURFACE	585'
Prot. String				
Production String	7"	26#	SURFACE	6,946'
Liner				

<<< Fold Here >>>

All interpretations are opinions based on inferences from electrical or other measurements and we cannot and do not guarantee the accuracy or correctness of any interpretation, and we shall not, except in the case of gross or willful negligence on our part, be liable or responsible for any loss, costs, damages, or expenses incurred or sustained by anyone resulting from any interpretation made by any of our officers, agents or employees. These interpretations are also subject to our general terms and conditions set out in our current Price Schedule.

Comments

LOG RAN PER CUSTOMER REQUEST
 DEPTH REFERENCED TO KB
 ZERO PRESSURE APPLIED

 MAIN PASS 700" TO SURFACE
 FREE PIPE IN 7IN IS 62.2(MV)

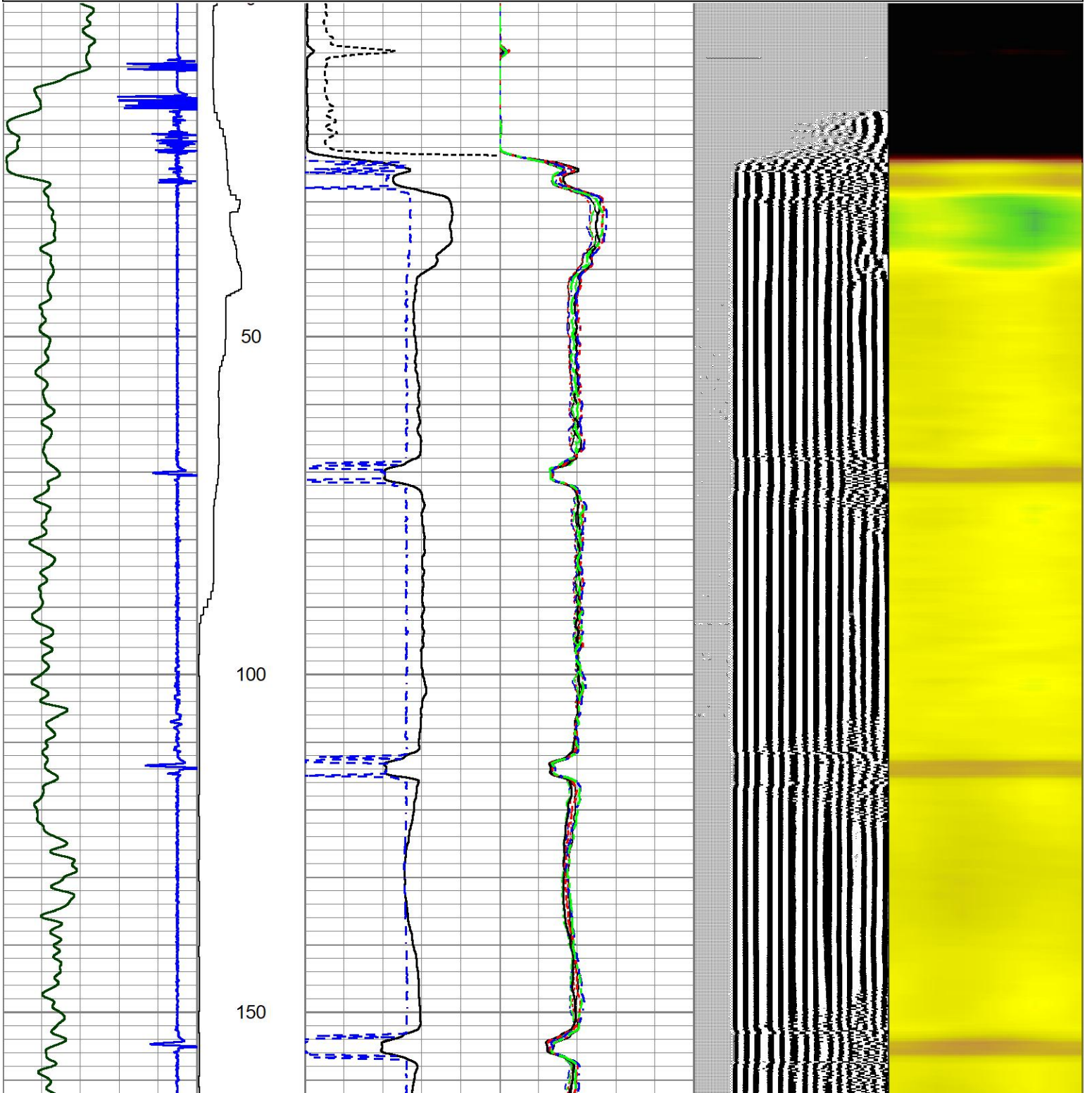
 THANK YOU FOR USING A-PLUS P&A LLC

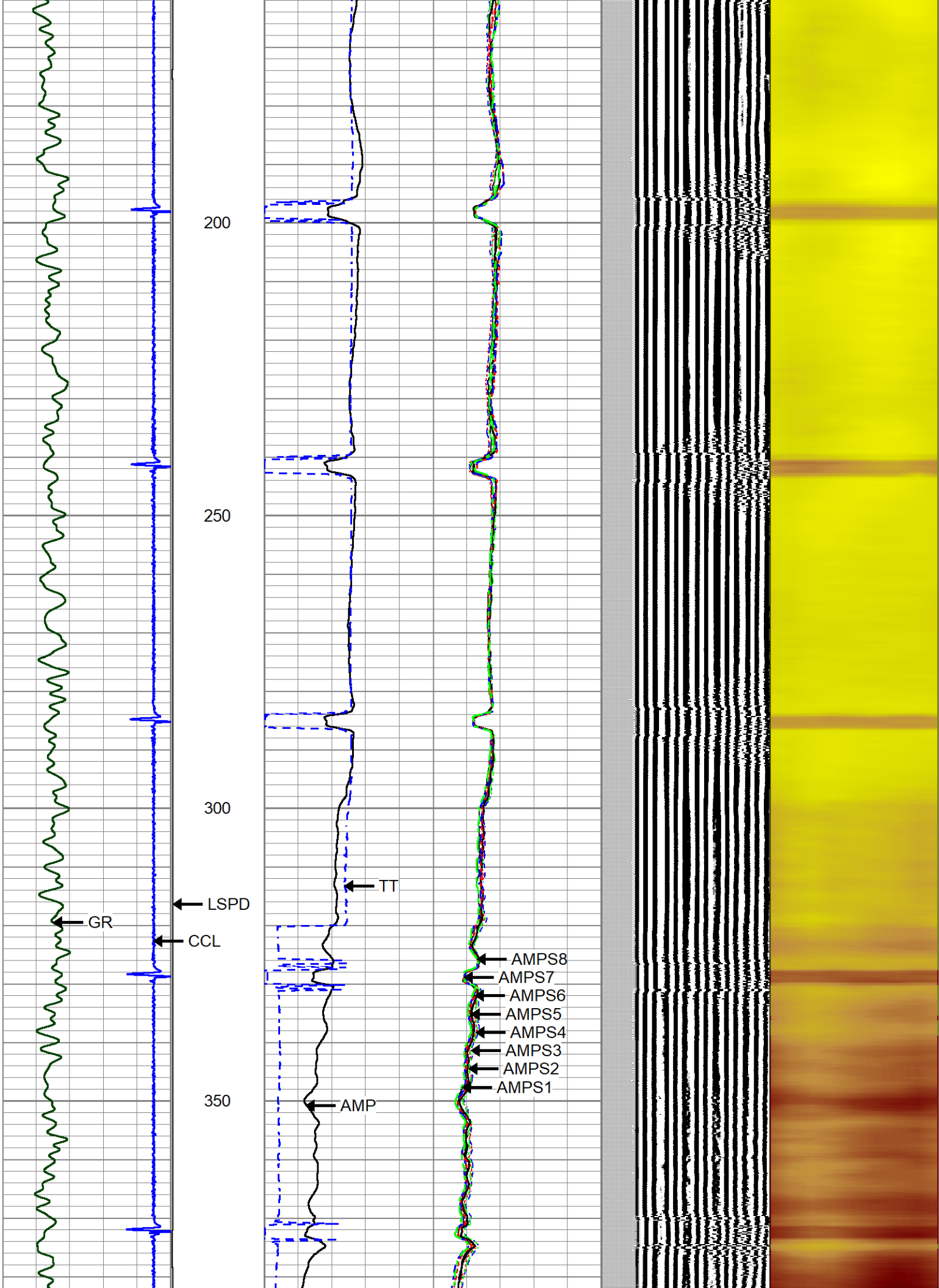


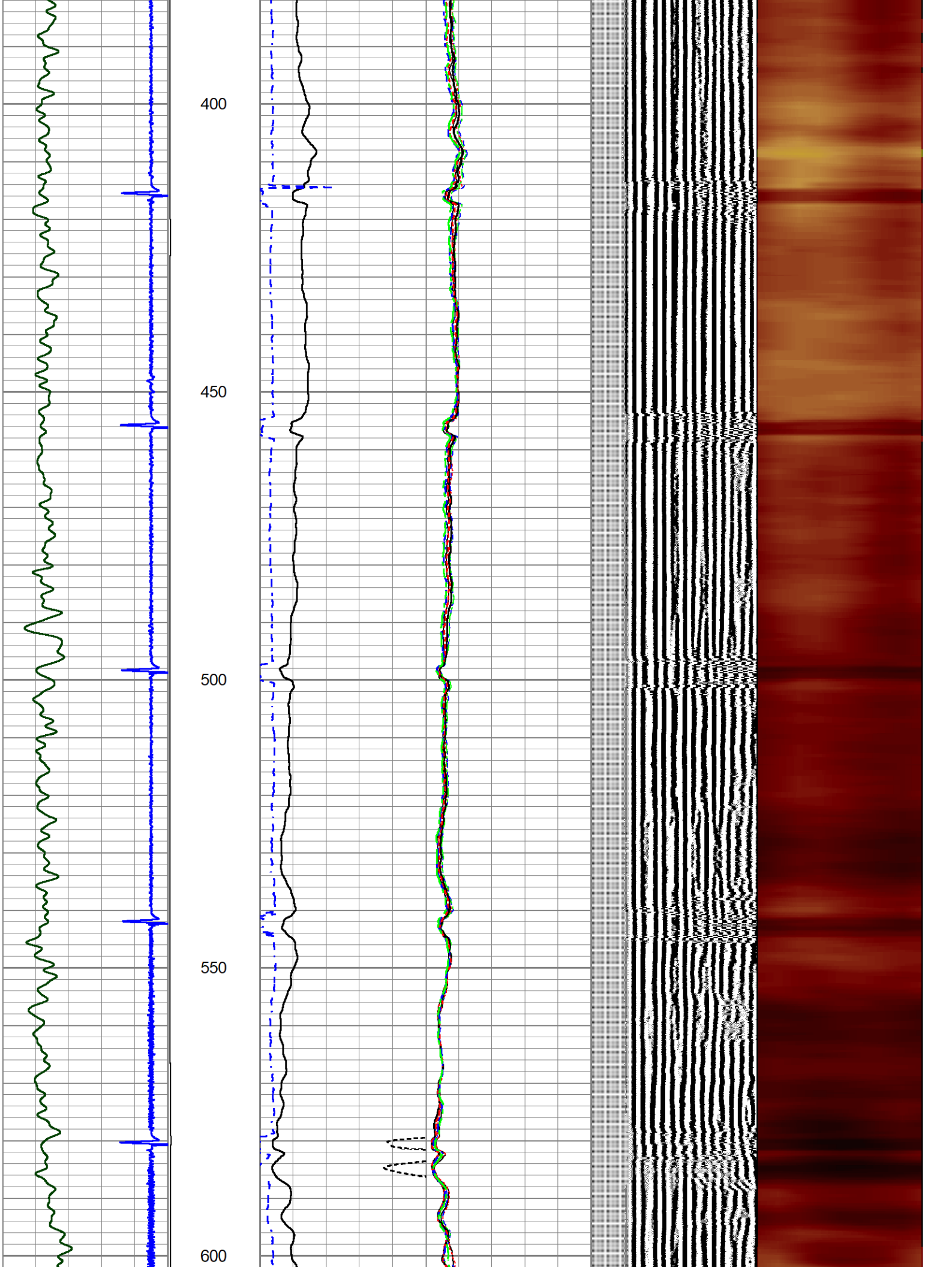
MAIN PASS

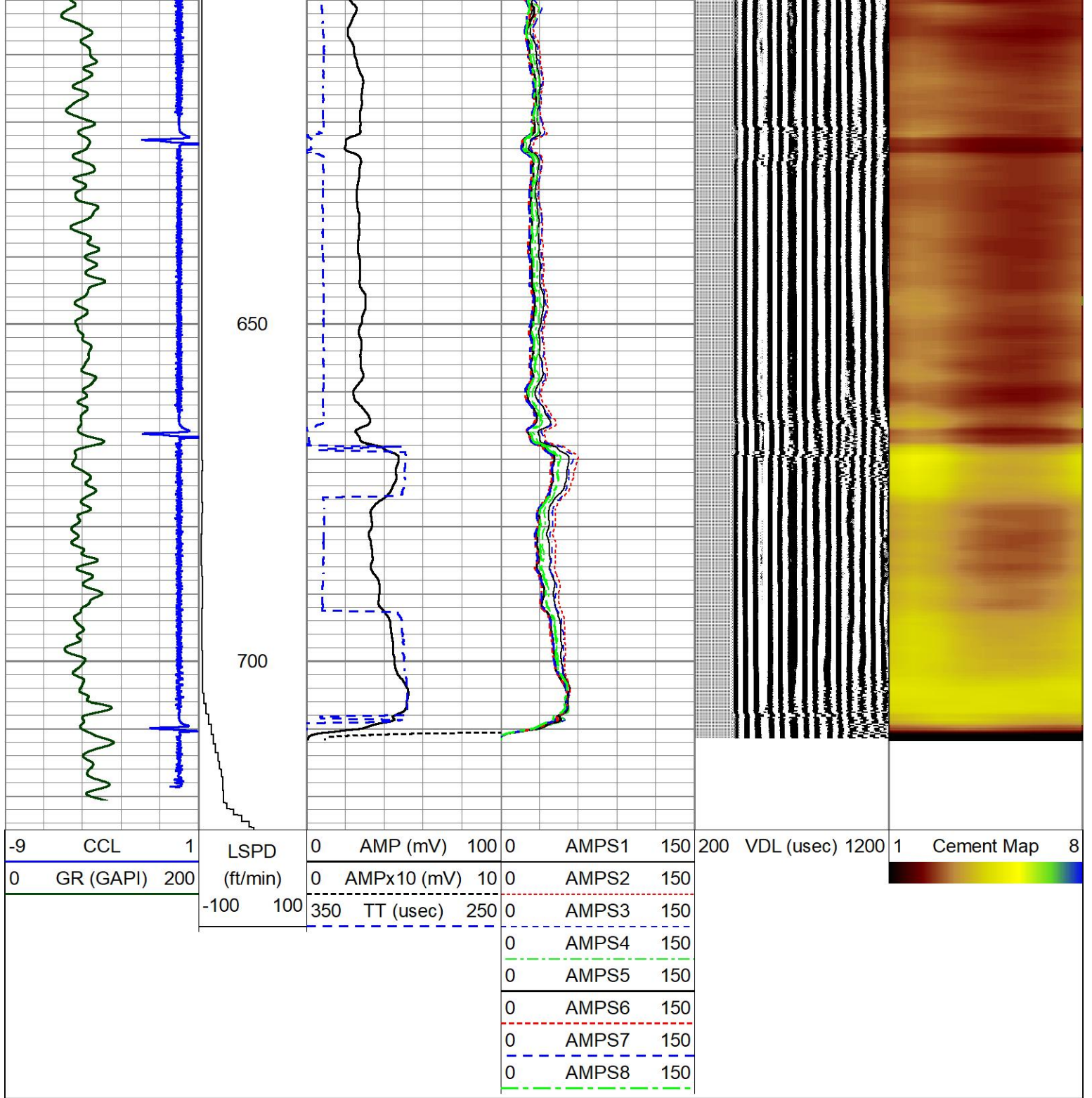
Database File 8-23-24.db
 Dataset Pathname pass8
 Presentation Format zionrbl
 Dataset Creation Fri Aug 23 08:08:27 2024
 Charted by Depth in Feet scaled 1:240

-9	CCL	1	LSPD	0	AMP (mV)	100	0	AMPS1	150	200	VDL (usec)	1200	1	Cement Map	8
0	GR (GAPI)	200	(ft/min)	0	AMPx10 (mV)	10	0	AMPS2	150						
			-100 100	350	TT (usec)	250	0	AMPS3	150						
							0	AMPS4	150						
							0	AMPS5	150						
							0	AMPS6	150						
							0	AMPS7	150						
							0	AMPS8	150						



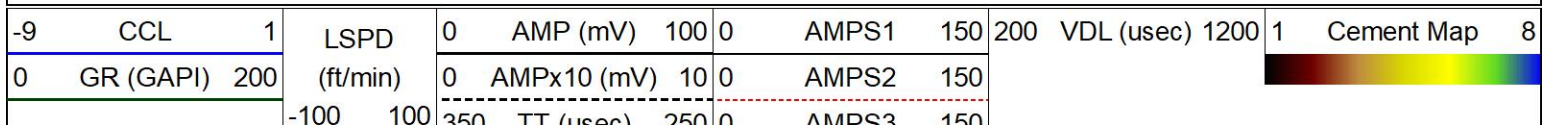




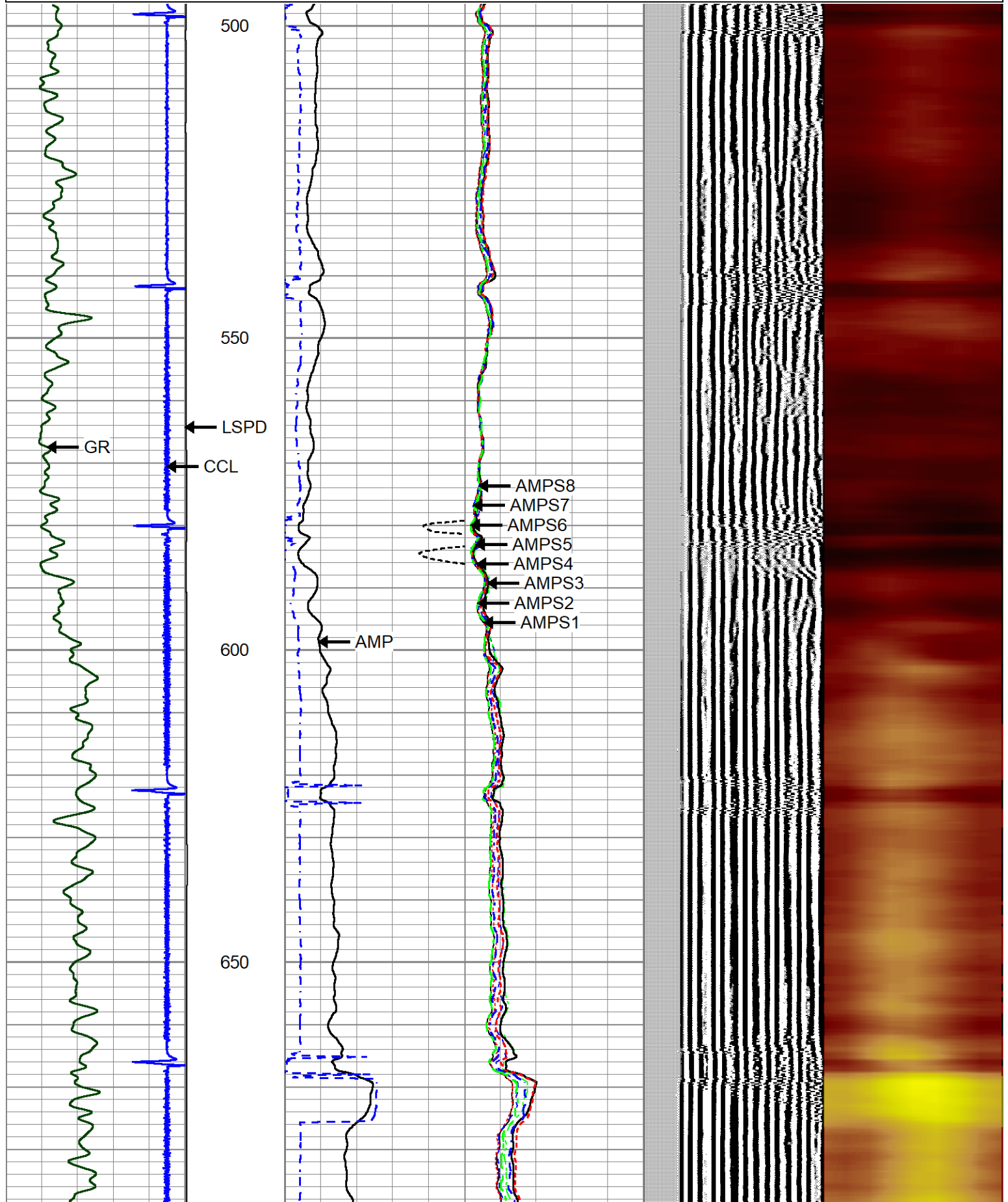


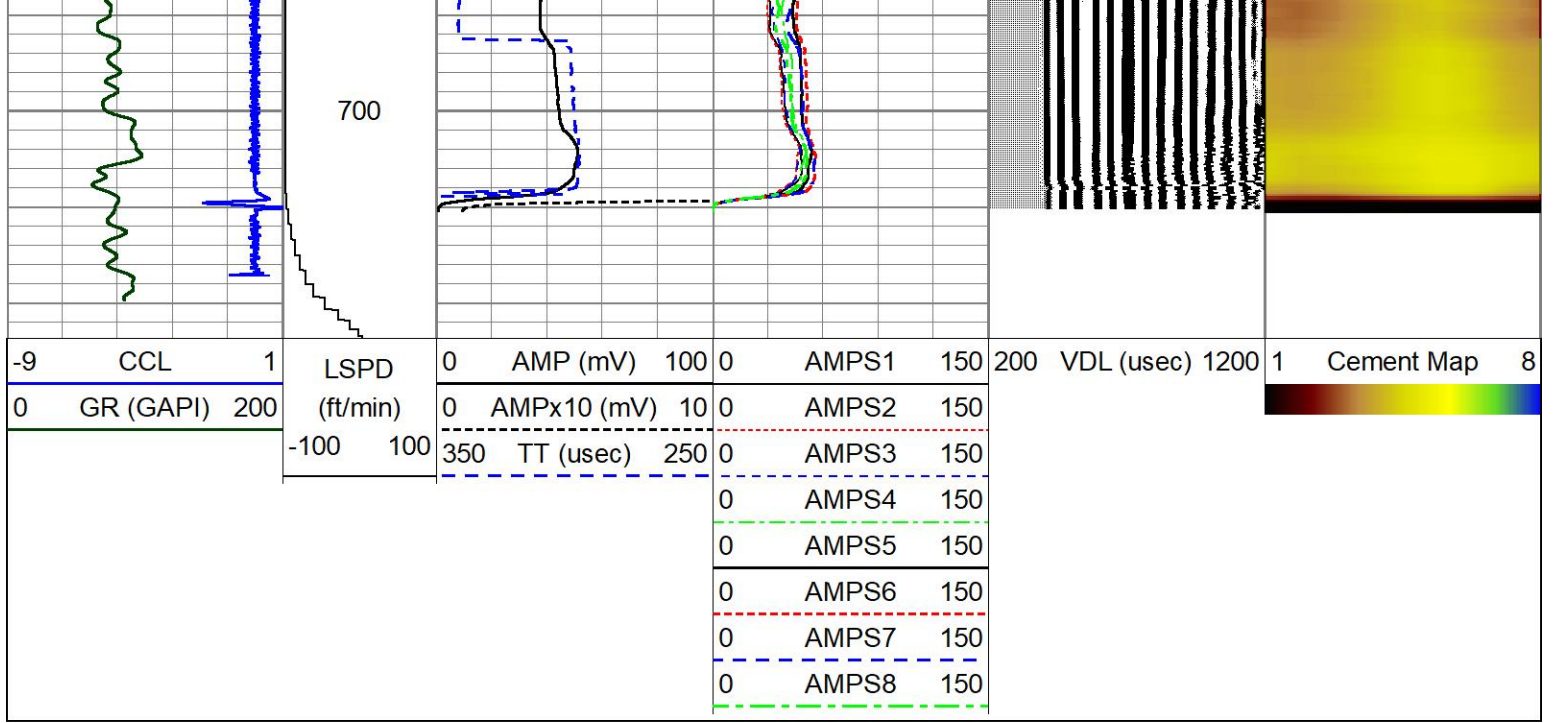
REPEAT PASS

Database File 8-23-24.db
 Dataset Pathname pass6
 Presentation Format zionrbl
 Dataset Creation Fri Aug 23 08:04:05 2024
 Charted by Depth in Feet scaled 1:240



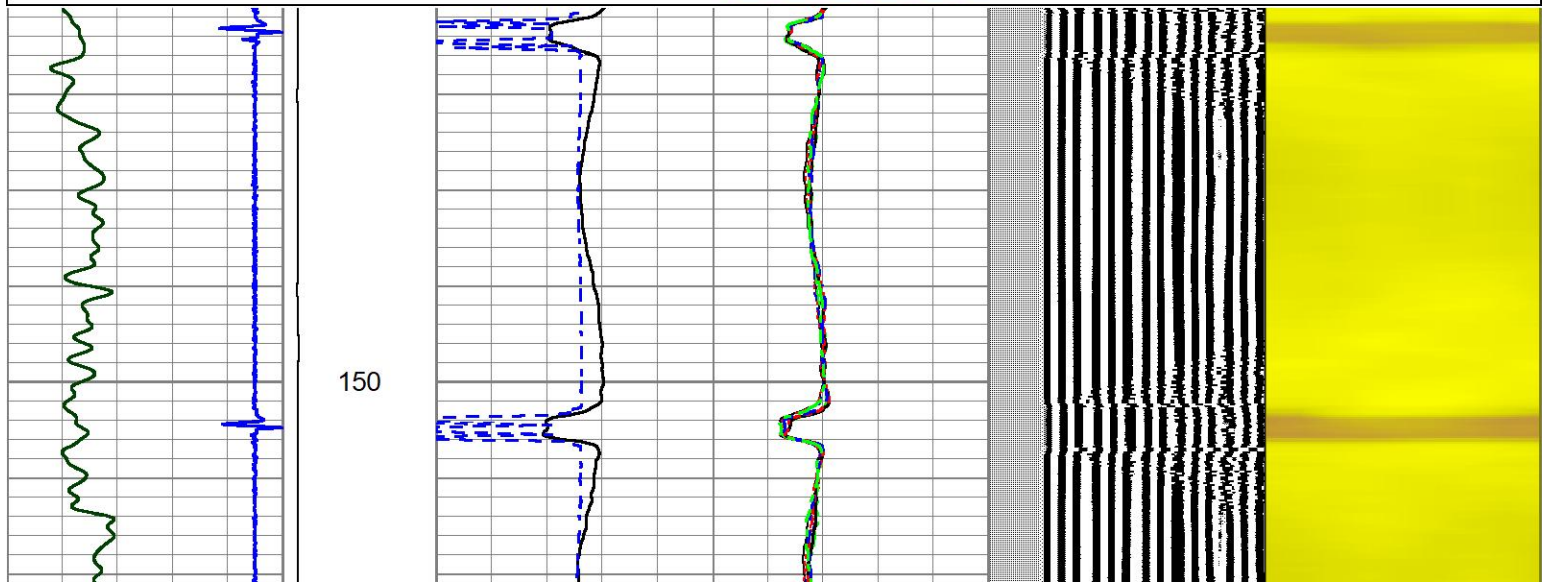
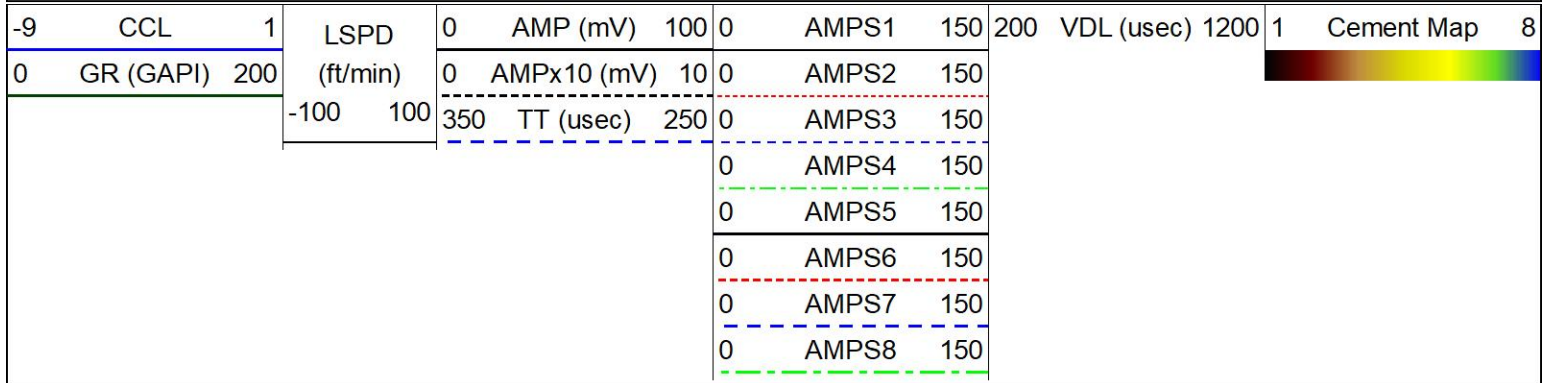
550	TT (usec)	250	0	AMPS3	150
0				AMPS4	150
0				AMPS5	150
0				AMPS6	150
0				AMPS7	150
0				AMPS8	150

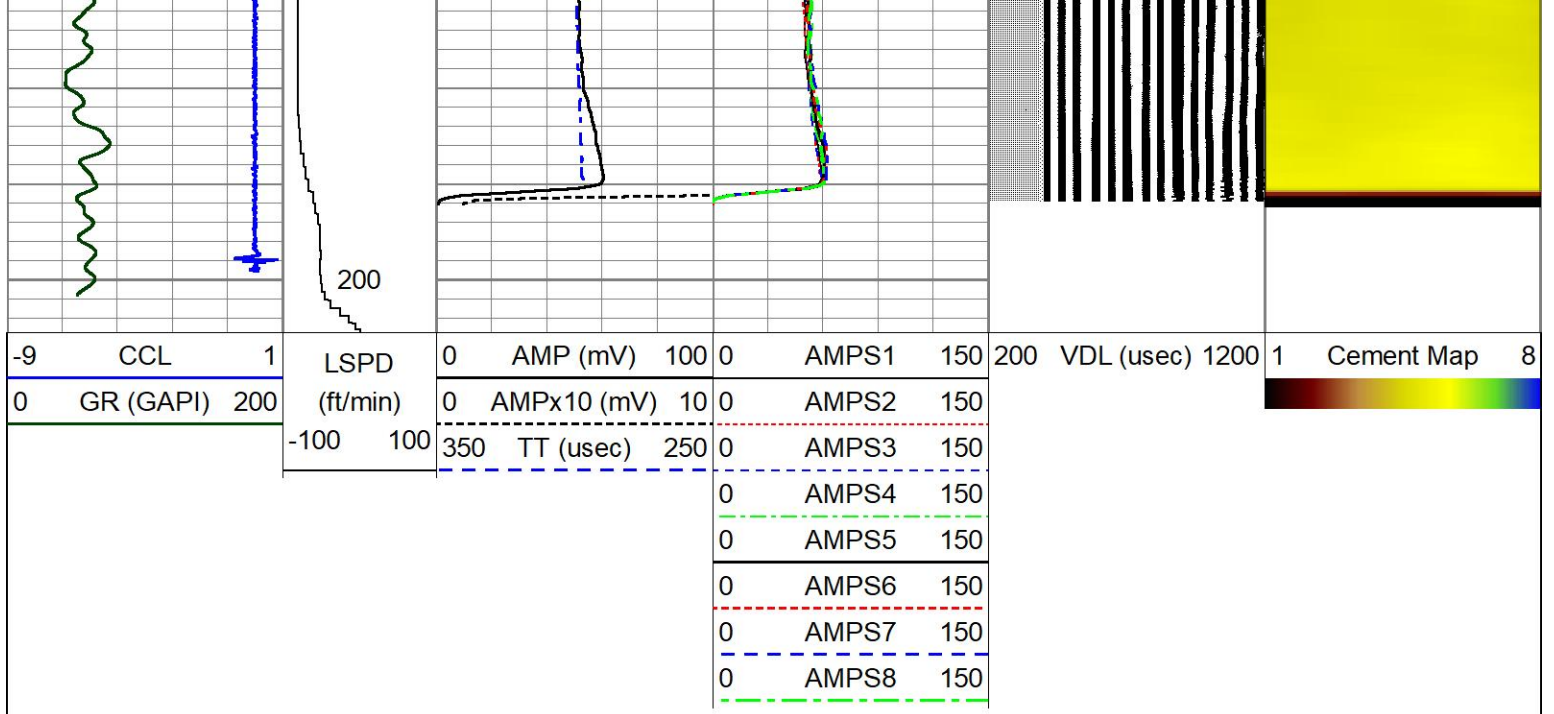




CALIBRATION PASS

Database File 8-23-24.db
 Dataset Pathname pass4
 Presentation Format zionrbl
 Dataset Creation Fri Aug 23 07:57:08 2024
 Charted by Depth in Feet scaled 1:240





Calibration Report

Database File 8-23-24.db
 Dataset Pathname pass8
 Dataset Creation Fri Aug 23 08:08:27 2024

Gamma Ray Calibration Report

Serial Number: GCL004_base
 Tool Model: GCL004
 Performed: (Not Performed)

Calibrator Value: 1.0 GAPI

Background Reading: 0.0 cps
 Calibrator Reading: 1.0 cps

Sensitivity: 1.0000 GAPI/cps

Segmented Cement Bond Log Calibration Report

Serial Number: FW2001-30
 Tool Model: HTRCB-275

Calibration Casing Diameter: 7.000 in
 Calibration Depth: 164.165 ft

Master Calibration, performed Fri Aug 23 07:56:22 2024:

	Raw (v)		Calibrated (mv)		Results	
	Zero	Cal	Zero	Cal	Gain	Offset
3'	0.001	1.001	1.000	62.165	61.164	0.948
CAL	0.001	1.333				
5'	0.001	1.033	1.000	62.165	59.253	0.945
SUM						
S1	0.001	0.982	0.000	62.165	63.396	-0.060
S2	0.001	0.988	0.000	62.165	62.999	-0.058
S3	0.001	1.005	0.000	62.165	61.891	-0.054
S4	0.001	1.018	0.000	62.165	61.118	-0.058
S5	0.001	1.025	0.000	62.165	60.665	-0.041
S6	0.001	1.001	0.000	62.165	62.167	-0.053

S7	0.001	0.959	0.000	62.165	64.909	-0.053
S8	0.001	0.941	0.000	62.165	66.112	-0.052

Internal Reference Calibration, performed Fri Aug 23 07:44:06 2024:

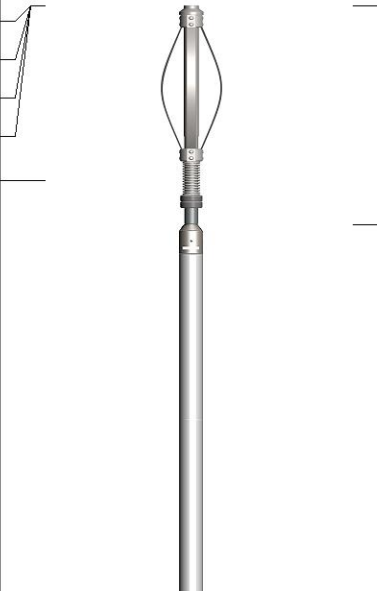
	Raw (v)		Calibrated (v)		Results	
	Zero	Cal	Zero	Cal	Gain	Offset
CAL	0.000	0.000	0.001	1.333	1.000	0.000

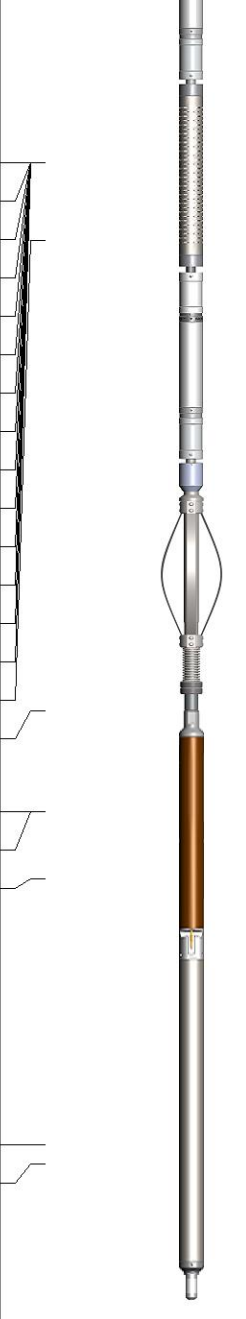
Air Zero Calibration, performed Fri Apr 19 14:29:14 2024:

	Raw (v)		Calibrated (v)		Results	
	Zero		Zero		Offset	
3'	0.000		0.000		0.000	
5'	0.000		0.000		0.000	
SUM						
S1	0.000		0.000		0.000	
S2	0.000		0.000		0.000	
S3	0.000		0.000		0.000	
S4	0.000		0.000		0.000	
S5	0.000		0.000		0.000	
S6	0.000		0.000		0.000	
S7	0.000		0.000		0.000	
S8	0.000		0.000		0.000	

Inclinometer Calibration Report

Performed:	(Not Performed)				
	Low Read.	High Read.	Low Ref.	High Ref.	
X Accelerometer	0.00	1.00	0.00	1.00	gee
Y Accelerometer	0.00	1.00	0.00	1.00	gee
Z Accelerometer	0.00	1.00	0.00	1.00	gee

Sensor	Offset (ft)	Schematic	Description	Length (ft)	O.D. (in)	Weight (lb)
GCT_FMWR	24.36		CENT-BC275-0000 Probe 2.75" Bowspring Centralizer	2.83	2.75	24.00
mSec_Count	24.36					
RBT_Status	24.36					
Error_Ct	24.36					
RBT_HV	22.09					

			RBT8-HTRCB-275 (FW2001-30) Probe 2.75" High Temperature RADII 8 Sector Bond Tool w/ external temperature	11.08	2.75		
RBT_ACCZ	14.69						
RBT_ACCY	14.69						
RBT_ACCX	14.69						
WVFSYNC	14.69						
WVFS8	14.69						
WVFS7	14.69						
WVFS6	14.69						
WVFS5	14.69						
WVFS4	14.69						
WVFS3	14.69						
WVFS2	14.69						
WVFS1	14.69			CENT-BC275-0000 Probe 2.75" Bowspring Centralizer	2.83	2.75	24.00
WVFCAL	14.69						
WVF3FT	14.69						
WVF5FT	13.69						
GCT_HV	7.61						
CCL\$2	6.31						
CCL\$1	6.31						
GCT_Temp	5.43						
			GCacc-GCL004 (GCL004_base) Probe High Temp Gamma Ray - CCL (6 Magnet) w/ Temp	7.28	2.75	92.00	
GCT_IntTemp	2.00						
GR	1.75						
			Plug-FA108-0000 1.38" Bull Plug	0.33	1.38	1.00	

Dataset: 8-23-24.db: field/well/run1/pass8
Total length: 24.36 ft
Total weight: 141.00 lb
O.D.: 2.75 in

Log Variables

DatabaseC:\ProgramData\Warrior\Data\8-23-24.db
Dataset field/well/run1/pass8/_vars_

Top - Bottom

BOREID in 7.875	BOTTEMP degF 100	CASEOD in 7	CASETHCK in 0	CASEWGHT lb/ft 26	MAXAMPL mV 62.2	MINAMPL mV 1	MINATTN db/ft 0.8
PERFS No	PPT usec 0	SRFTEMP degF 0	TDEPTH ft 0				

Variable Description

BOREID : Borehole I.D.

BOTTEMP : Bottom Hole Temperature

CASEOD : Casing O.D.

CASEWGHT : Casing Weight

MAXAMPL : Maximum Amplitude

MINAMPL : Minimum Amplitude

PERFS : Perforation Flag

PPT : Predicted Pipe Time

SRFTEMP : Surface Temperature

CASETHCK : Casing Thickness

MINATTN : Minimum Attenuation

TDEPTH : Total Depth