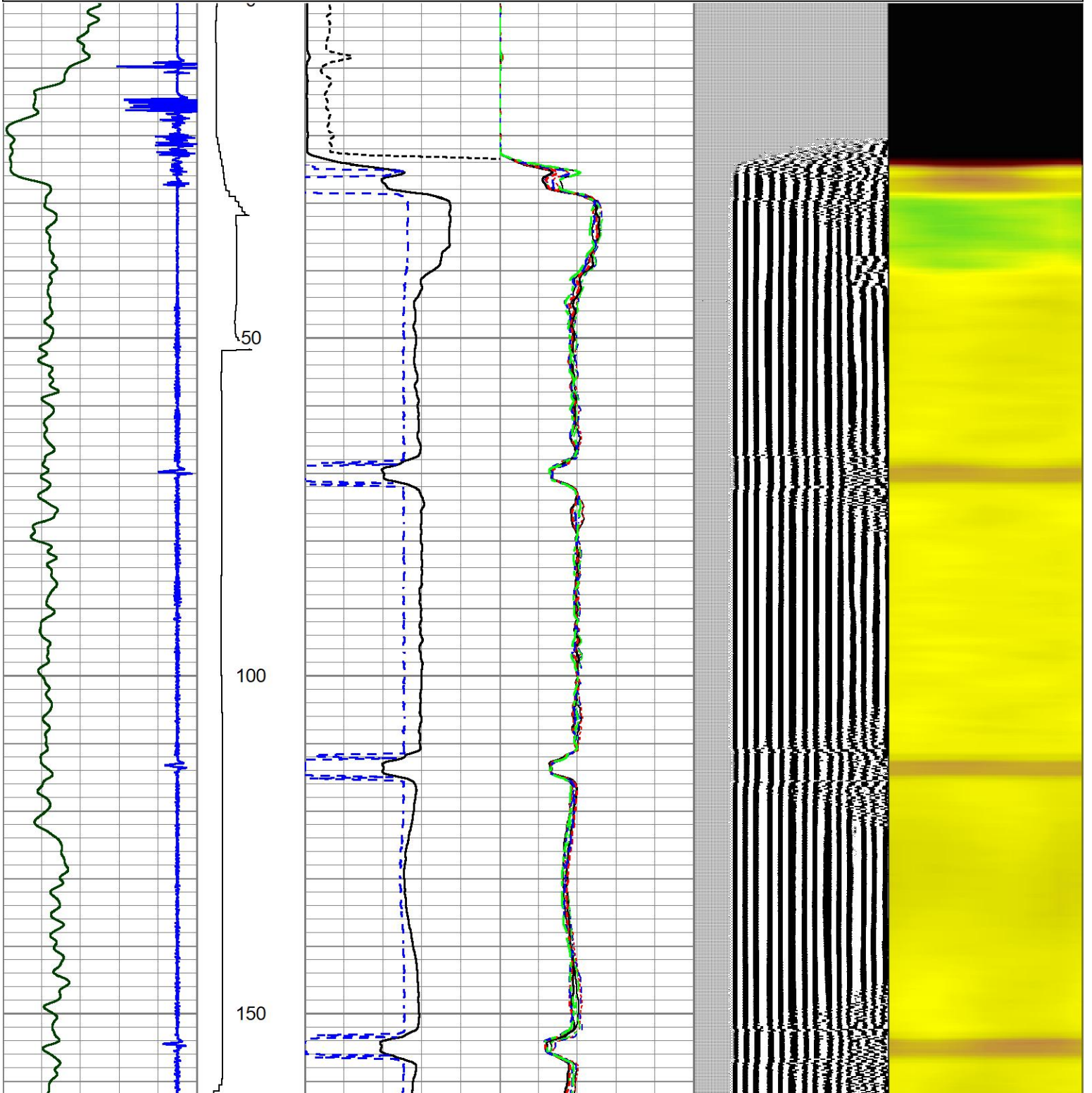
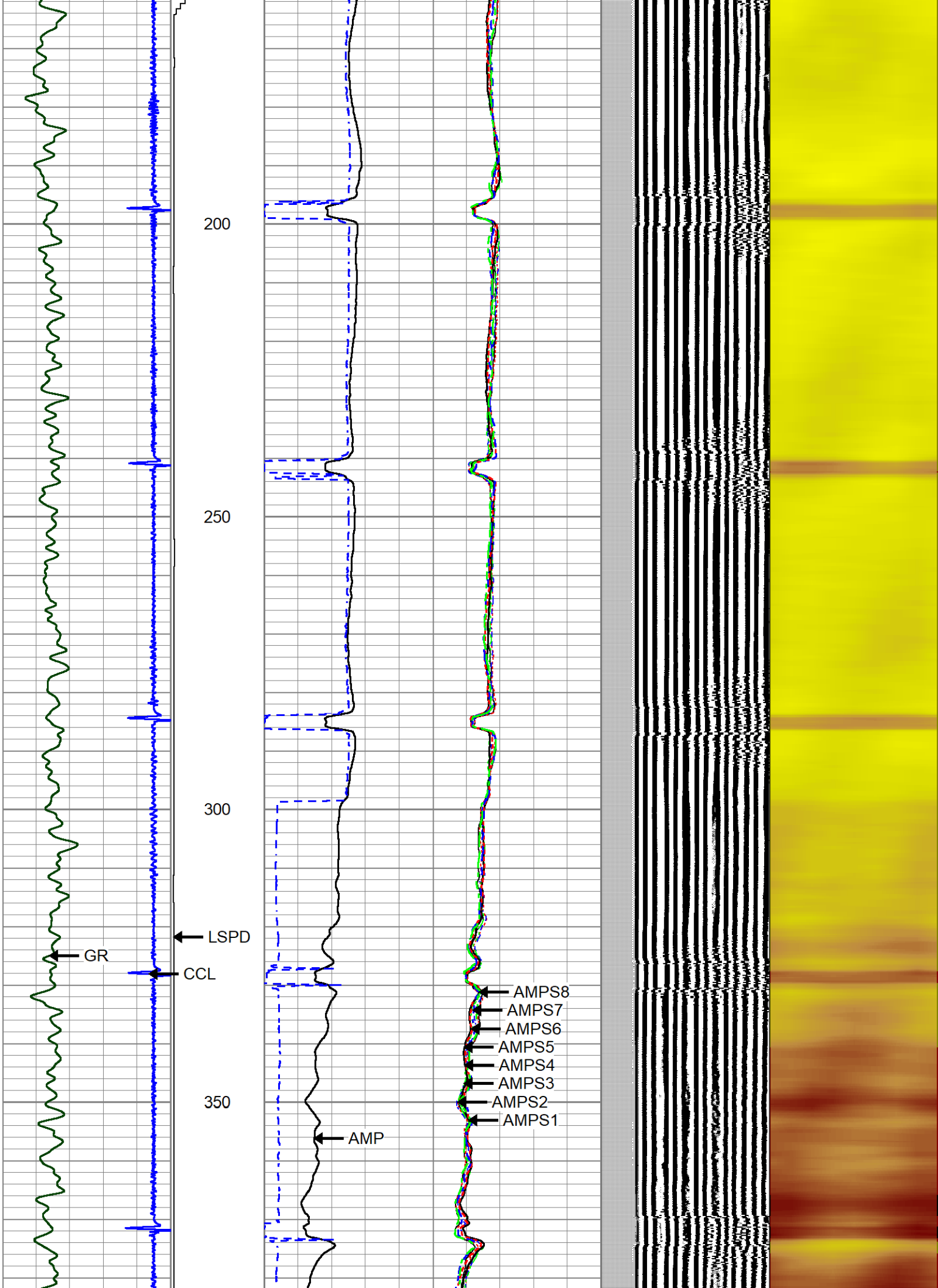
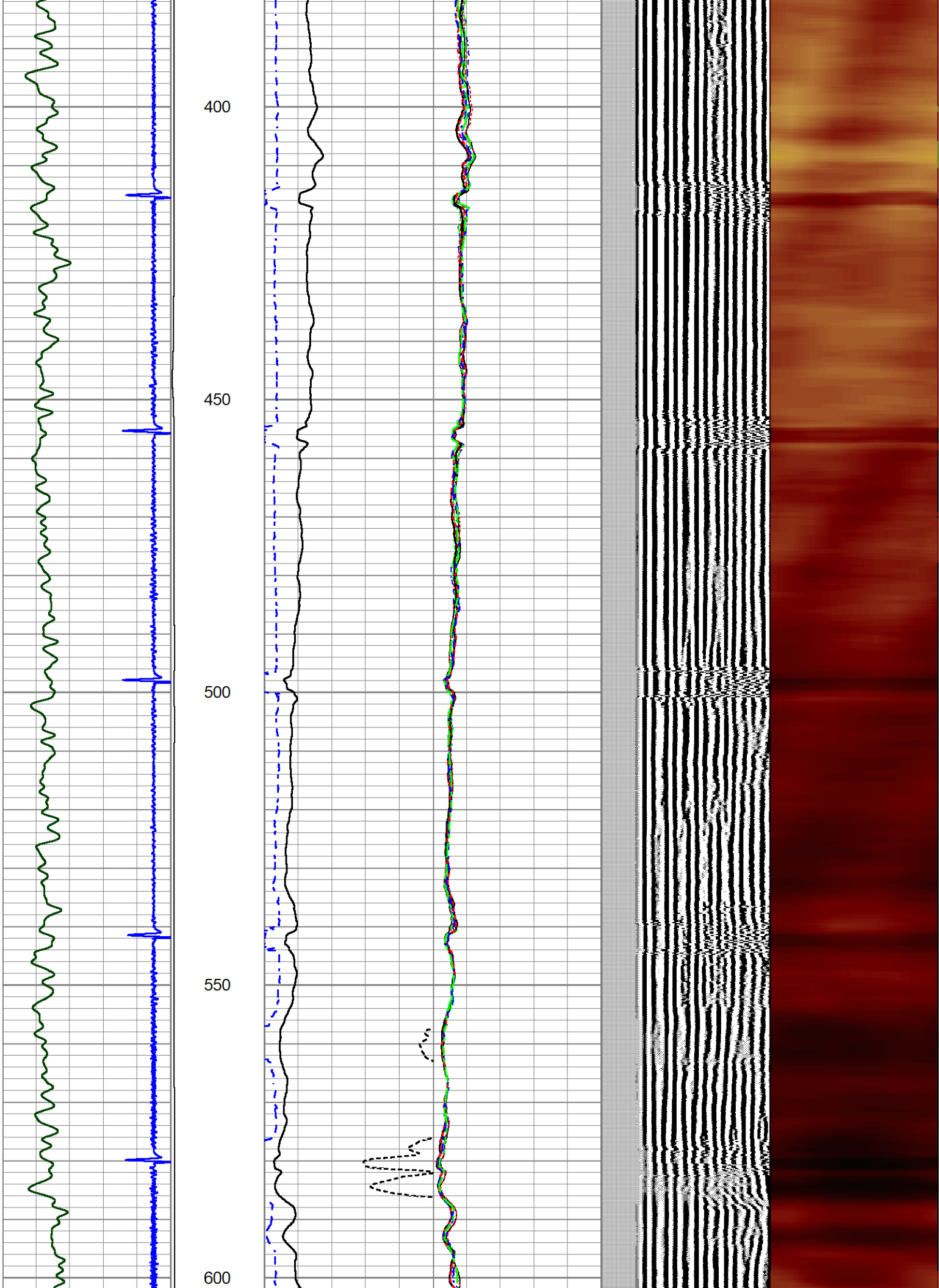


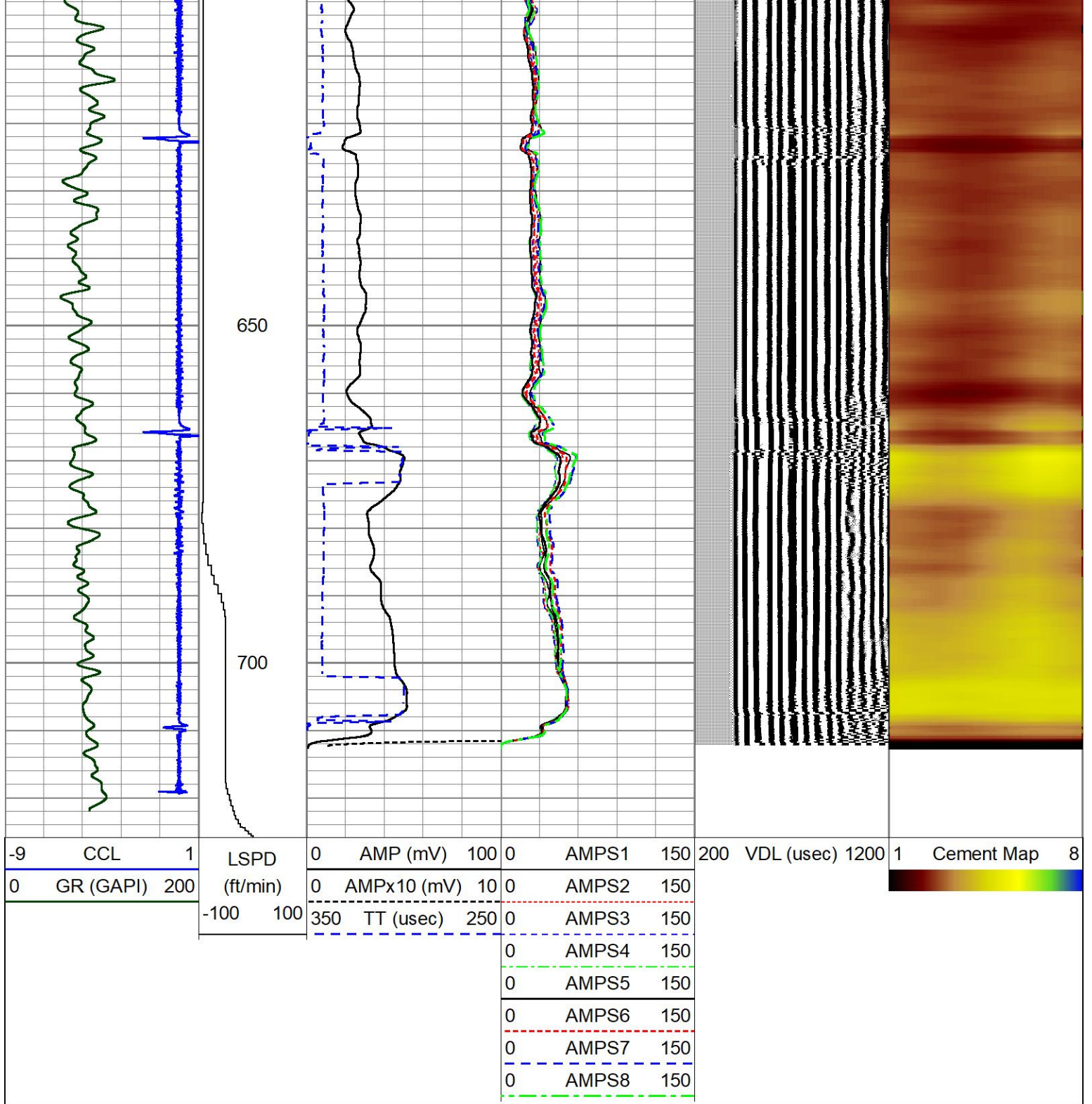
Database File 8-23-24.db
 Dataset Pathname pass17
 Presentation Format zionrbl
 Dataset Creation Fri Aug 23 10:39:30 2024
 Charted by Depth in Feet scaled 1:240

-9	CCL	1	LSPD	0	AMP (mV)	100	0	AMPS1	150	200	VDL (usec)	1200	1	Cement Map	8
0	GR (GAPI)	200	(ft/min)	0	AMPx10 (mV)	10	0	AMPS2	150						
			-100 100	350	TT (usec)	250	0	AMPS3	150						
							0	AMPS4	150						
							0	AMPS5	150						
							0	AMPS6	150						
							0	AMPS7	150						
							0	AMPS8	150						



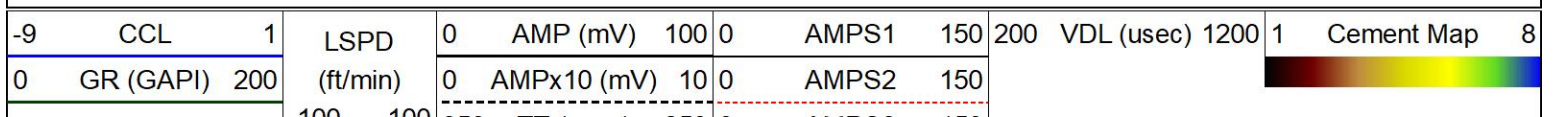




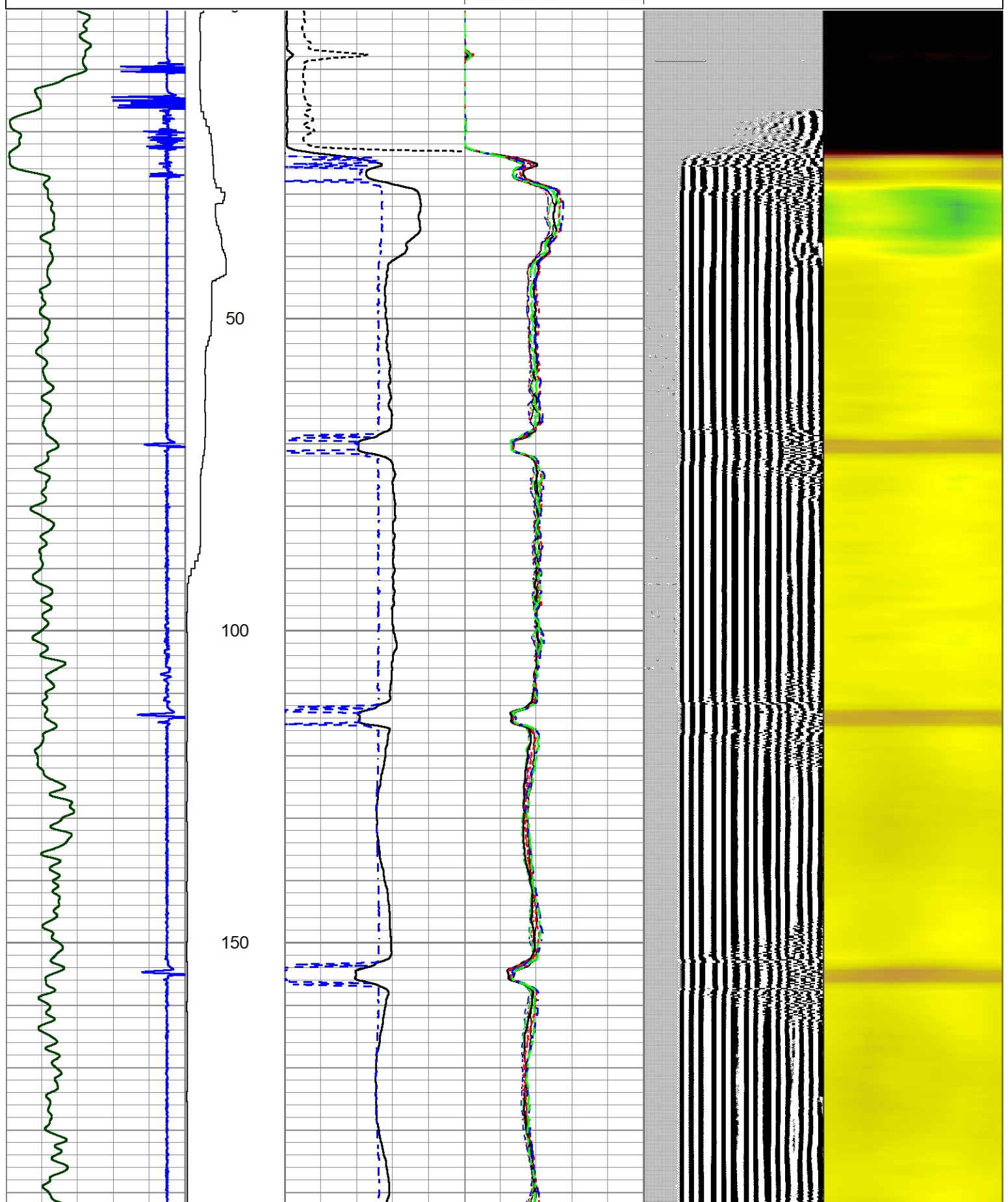


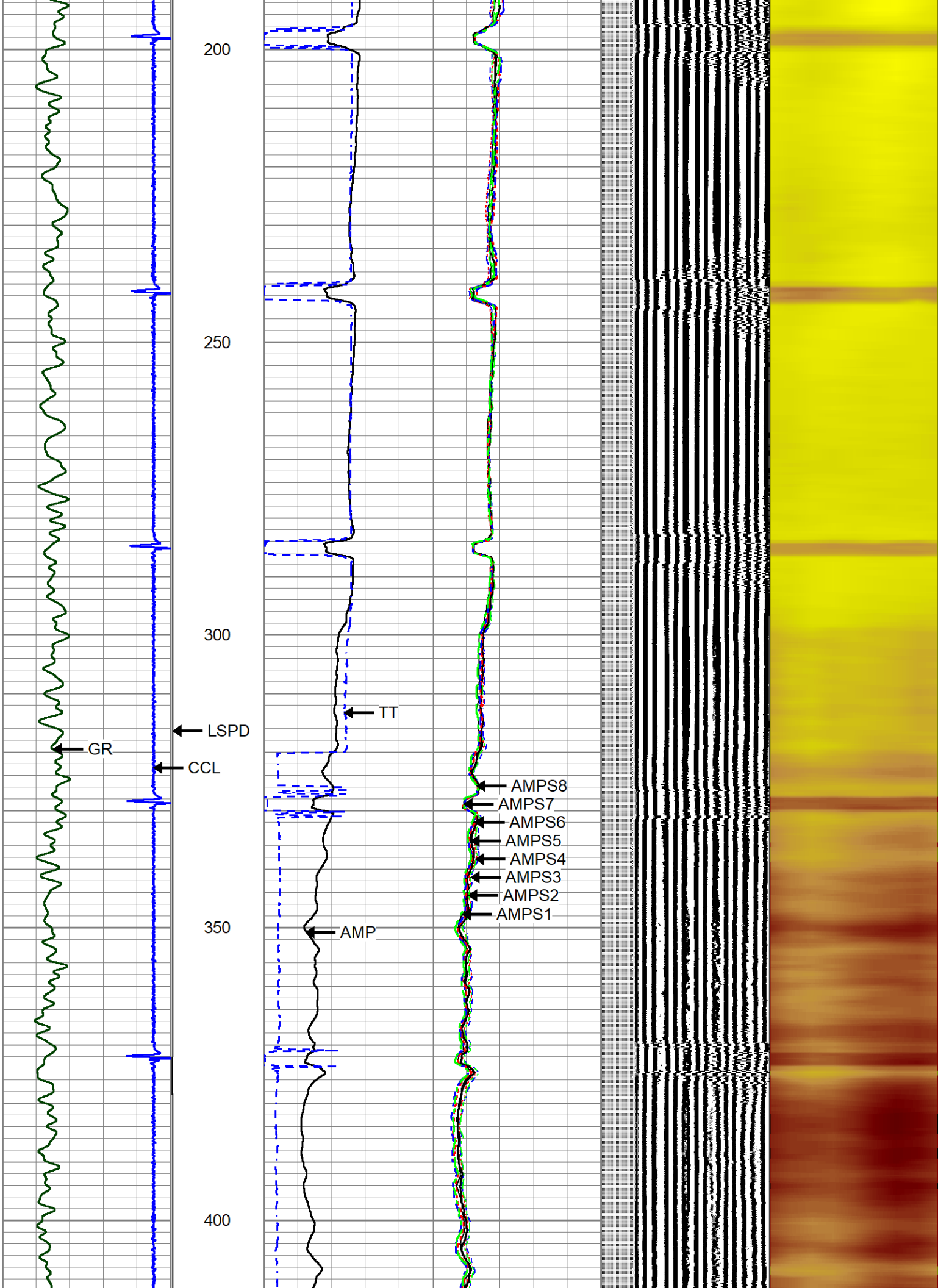
MAIN PASS

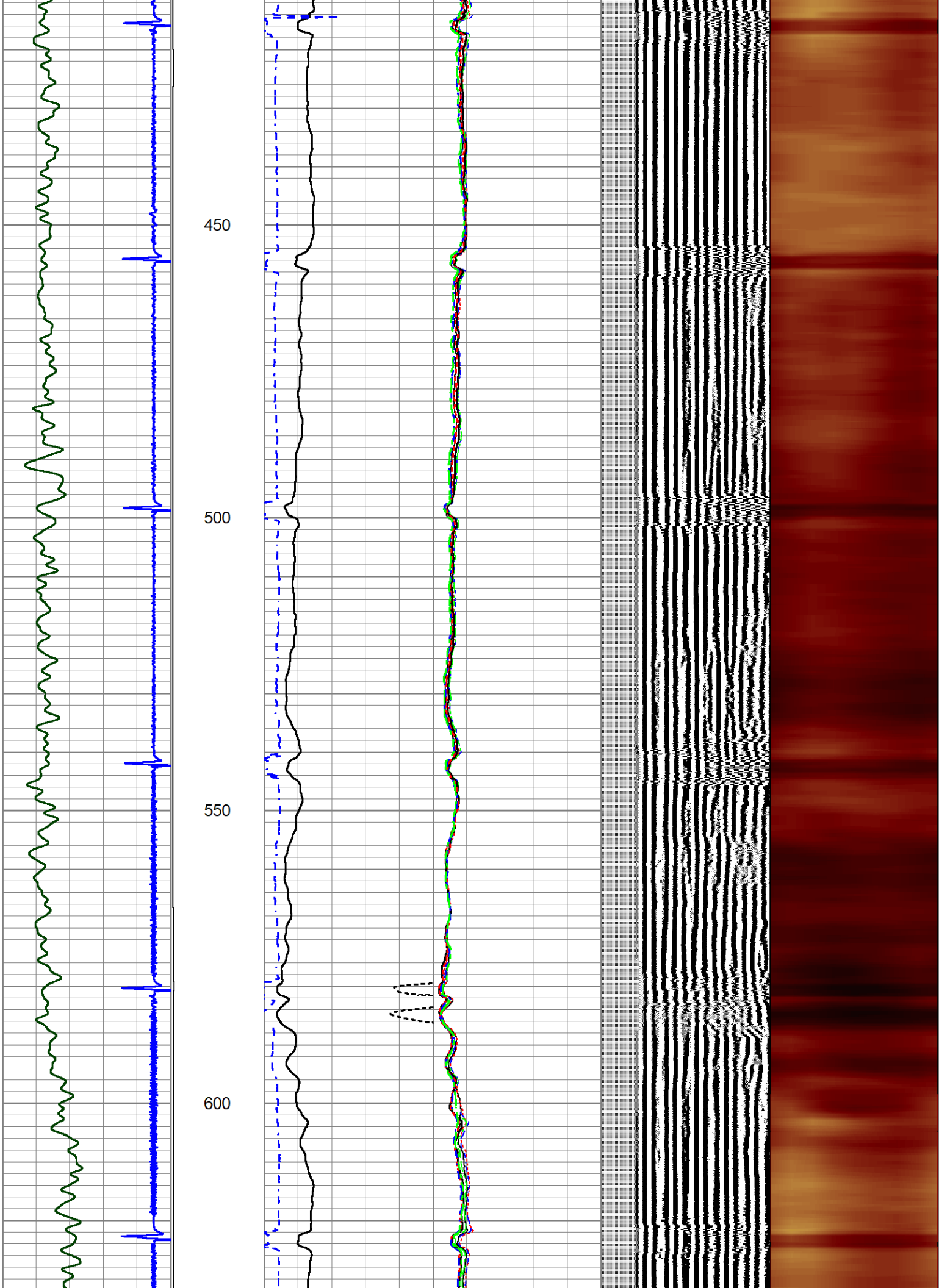
Database File 8-23-24.db
 Dataset Pathname pass8
 Presentation Format zionrbl
 Dataset Creation Fri Aug 23 08:08:27 2024
 Charted by Depth in Feet scaled 1:240

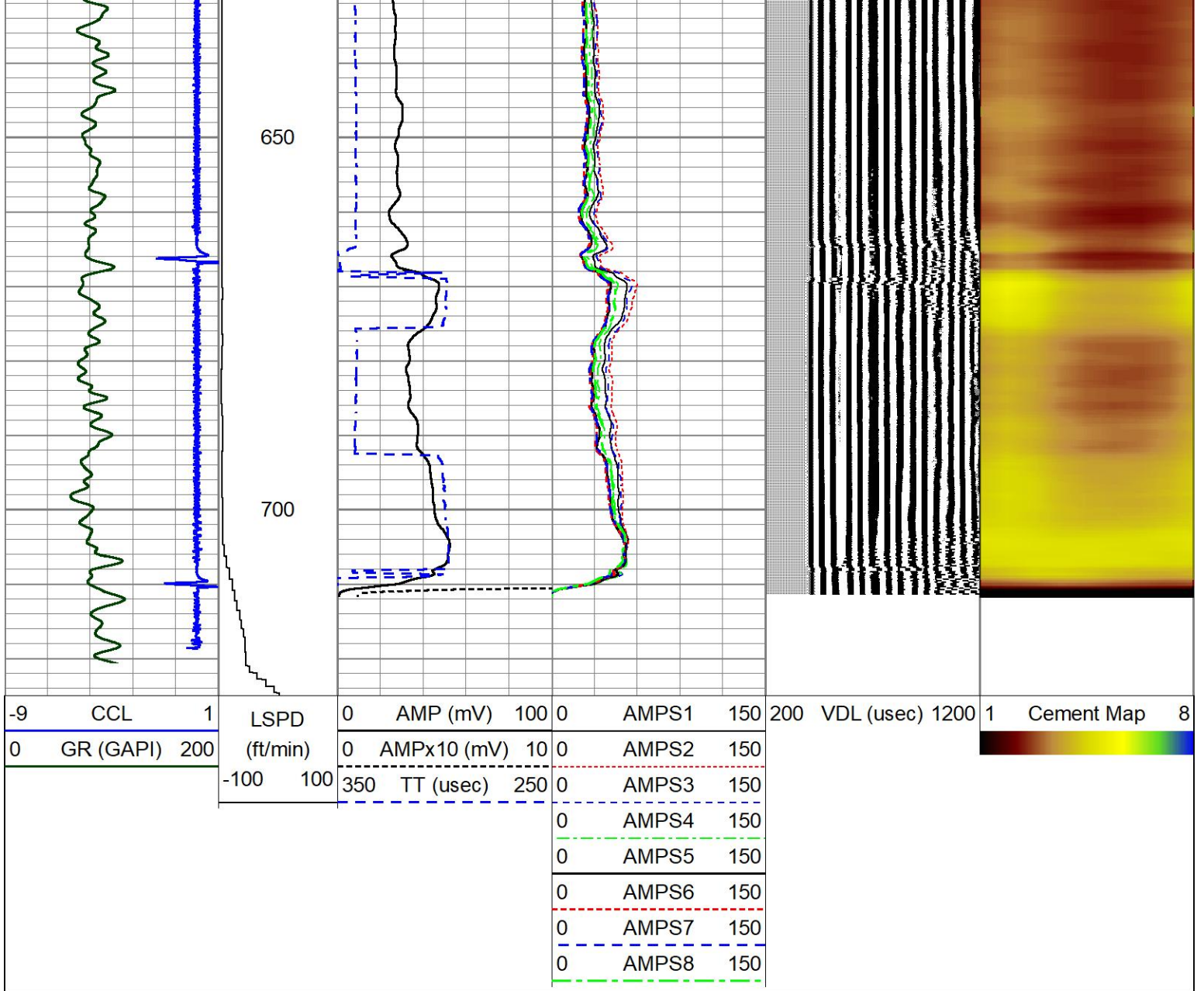


-100	-100	350	TT (usec)	250	0	AMPS3	150
					0	AMPS4	150
					0	AMPS5	150
					0	AMPS6	150
					0	AMPS7	150
					0	AMPS8	150



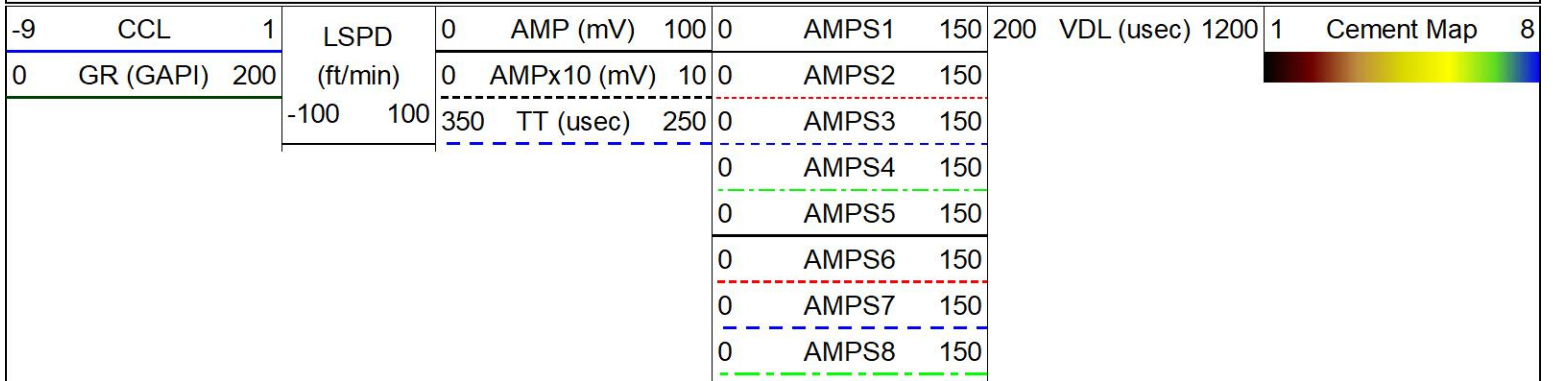


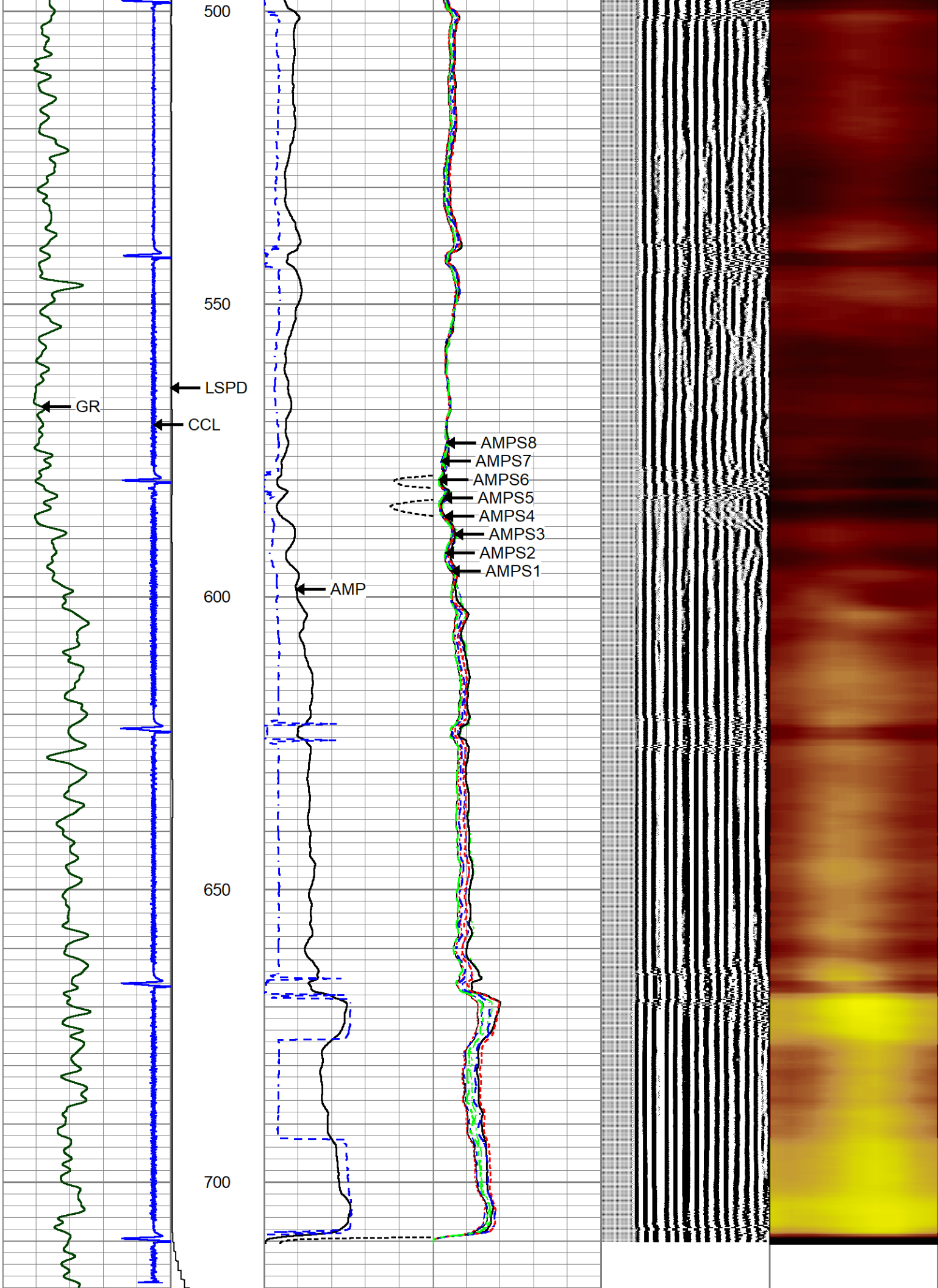




REPEAT PASS

Database File 8-23-24.db
 Dataset Pathname pass6
 Presentation Format zionrbl
 Dataset Creation Fri Aug 23 08:04:05 2024
 Charted by Depth in Feet scaled 1:240





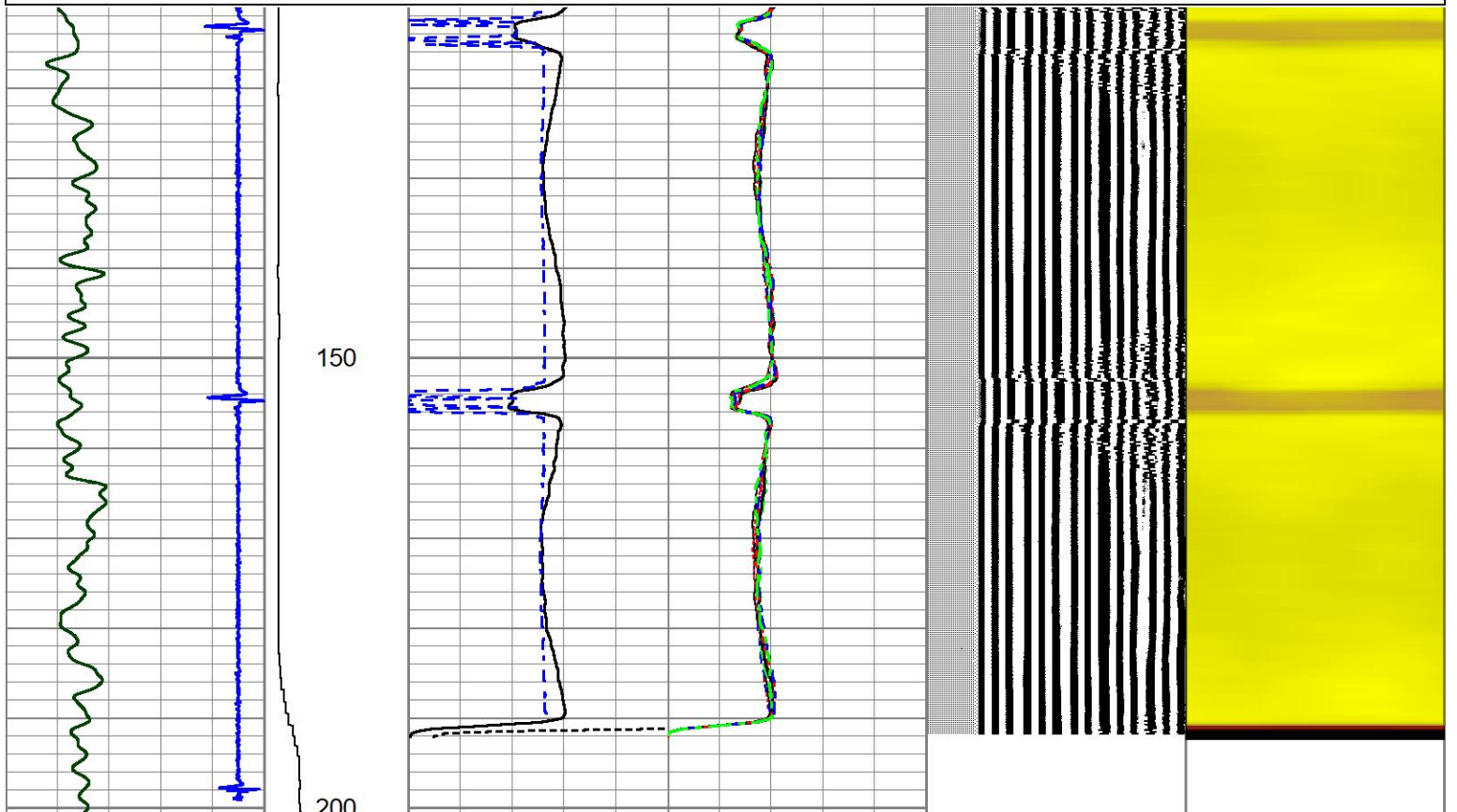
-9	CCL	1	LSPD	0	AMP (mV)	100	0	AMPS1	150	200	VDL (usec)	1200	1	Cement Map	8
0	GR (GAPI)	200	(ft/min)	0	AMPx10 (mV)	10	0	AMPS2	150						
			-100 100	350	TT (usec)	250	0	AMPS3	150						
							0	AMPS4	150						
							0	AMPS5	150						
							0	AMPS6	150						
							0	AMPS7	150						
							0	AMPS8	150						



CALIBRATION PASS

Database File 8-23-24.db
 Dataset Pathname pass4
 Presentation Format zionrbl
 Dataset Creation Fri Aug 23 07:57:08 2024
 Charted by Depth in Feet scaled 1:240

-9	CCL	1	LSPD	0	AMP (mV)	100	0	AMPS1	150	200	VDL (usec)	1200	1	Cement Map	8
0	GR (GAPI)	200	(ft/min)	0	AMPx10 (mV)	10	0	AMPS2	150						
			-100 100	350	TT (usec)	250	0	AMPS3	150						
							0	AMPS4	150						
							0	AMPS5	150						
							0	AMPS6	150						
							0	AMPS7	150						
							0	AMPS8	150						



-9	CCL	1	LSPD	0	AMP (mV)	100	0	AMPS1	150	200	VDL (usec)	1200	1	Cement Map	8
0	GR (GAPI)	200	(ft/min)	0	AMPx10 (mV)	10	0	AMPS2	150						
			-100 100	350	TT (usec)	250	0	AMPS3	150						
							0	AMPS4	150						
							0	AMPS5	150						
							0	AMPS6	150						
							0	AMPS7	150						
							0	AMPS8	150						

Calibration Report

Database File 8-23-24.db
 Dataset Pathname pass8
 Dataset Creation Fri Aug 23 08:08:27 2024

Gamma Ray Calibration Report

Serial Number: GCL004_base
 Tool Model: GCL004
 Performed: (Not Performed)

Calibrator Value: 1.0 GAPI

Background Reading: 0.0 cps
 Calibrator Reading: 1.0 cps

Sensitivity: 1.0000 GAPI/cps

Segmented Cement Bond Log Calibration Report

Serial Number: FW2001-30
 Tool Model: HTRCB-275

Calibration Casing Diameter: 7.000 in
 Calibration Depth: 164.165 ft

Master Calibration, performed Fri Aug 23 07:56:22 2024:

	Raw (v)		Calibrated (mv)		Results	
	Zero	Cal	Zero	Cal	Gain	Offset
3'	0.001	1.001	1.000	62.165	61.164	0.948
CAL	0.001	1.333				
5'	0.001	1.033	1.000	62.165	59.253	0.945
SUM						
S1	0.001	0.982	0.000	62.165	63.396	-0.060
S2	0.001	0.988	0.000	62.165	62.999	-0.058
S3	0.001	1.005	0.000	62.165	61.891	-0.054
S4	0.001	1.018	0.000	62.165	61.118	-0.058
S5	0.001	1.025	0.000	62.165	60.665	-0.041
S6	0.001	1.001	0.000	62.165	62.167	-0.053
S7	0.001	0.959	0.000	62.165	64.909	-0.053
S8	0.001	0.941	0.000	62.165	66.112	-0.052

Internal Reference Calibration, performed Fri Aug 23 07:44:06 2024:

	Raw (v)		Calibrated (v)		Results	
	Zero	Cal	Zero	Cal	Gain	Offset

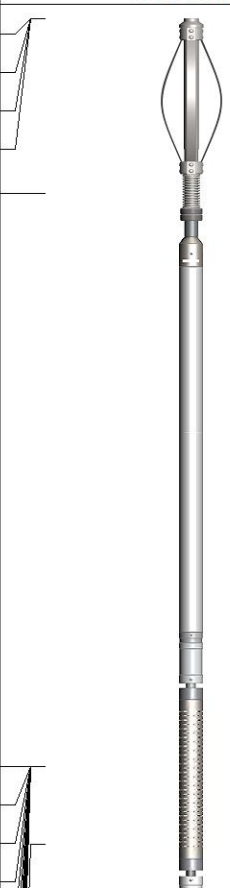

CAL 0.000 0.000 0.001 1.333 1.000 0.000

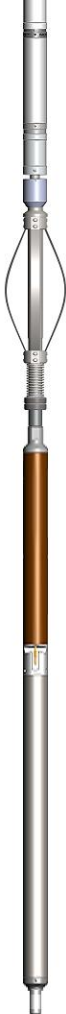
Air Zero Calibration, performed Fri Apr 19 14:29:14 2024:

	Raw (v)	Calibrated (v)	Results
	Zero	Zero	Offset
3'	0.000	0.000	0.000
5'	0.000	0.000	0.000
SUM			
S1	0.000	0.000	0.000
S2	0.000	0.000	0.000
S3	0.000	0.000	0.000
S4	0.000	0.000	0.000
S5	0.000	0.000	0.000
S6	0.000	0.000	0.000
S7	0.000	0.000	0.000
S8	0.000	0.000	0.000

Inclinometer Calibration Report

Performed:	(Not Performed)				
	Low Read.	High Read.	Low Ref.	High Ref.	
X Accelerometer	0.00	1.00	0.00	1.00	gee
Y Accelerometer	0.00	1.00	0.00	1.00	gee
Z Accelerometer	0.00	1.00	0.00	1.00	gee

Sensor	Offset (ft)	Schematic	Description	Length (ft)	O.D. (in)	Weight (lb)
GCT_FMWR	24.36		CENT-BC275-0000 Probe 2.75" Bowspring Centralizer	2.83	2.75	24.00
mSec_Count	24.36					
RBT_Status	24.36					
Error_Ct	24.36					
RBT_HV	22.09					
RBT_ACCZ	14.69		RBT8-HTRCB-275 (FW2001-30) Probe 2.75" High Temperature RADII 8 Sector Bond Tool w/ external temperature	11.08	2.75	
RBT_ACCY	14.69					
RBT_ACCX	14.69					
WVFSYNC	14.69					
	14.69					

WVFS8	14.69		CENT-BC275-0000 Probe 2.75" Bowspring Centralizer	2.83	2.75	24.00			
WVFS7	14.69								
WVFS6	14.69								
WVFS5	14.69								
WVFS4	14.69								
WVFS3	14.69								
WVFS2	14.69								
WVFS1	14.69								
WVFCAL	14.69								
WVF3FT	14.69								
WVF5FT	13.69	GCacc-GCL004 (GCL004_base) Probe High Temp Gamma Ray - CCL (6 Magnet) w/ Temp	7.28	2.75	92.00				
GCT_HV	7.61								
CCL\$2	6.31								
CCL\$1	6.31								
GCT_Temp	5.43								
GCT_IntTemp	2.00								
GR	1.75								
						Plug-FA108-0000 1.38" Bull Plug	0.33	1.38	1.00
Dataset:		8-23-24.db: field/well/run1/pass8							
Total length:		24.36 ft							
Total weight:		141.00 lb							
O.D.:		2.75 in							

Log Variables

DatabaseC:\ProgramData\Warrior\Data\8-23-24.db
Dataset field/well/run1/pass8/_vars_

Top - Bottom

BOREID in 7.875	BOTTEMP degF 100	CASEOD in 7	CASETHCK in 0	CASEWGHT lb/ft 26	MAXAMPL mV 62.2	MINAMPL mV 1	MINATTN db/ft 0.8
PERFS No	PPT usec 0	SRFTEMP degF 0	TDEPTH ft 0				

Variable Description

BOREID : Borehole I.D.
BOTTEMP : Bottom Hole Temperature
CASEOD : Casing O.D.
CASETHCK : Casing Thickness

CASEWGHT : Casing Weight
MAXAMPL : Maximum Amplitude
MINAMPL : Minimum Amplitude
MINATTN : Minimum Attenuation

PERFS : Perforation Flag
PPT : Predicted Pipe Time
SRFTEMP : Surface Temperature
TDEPTH : Total Depth