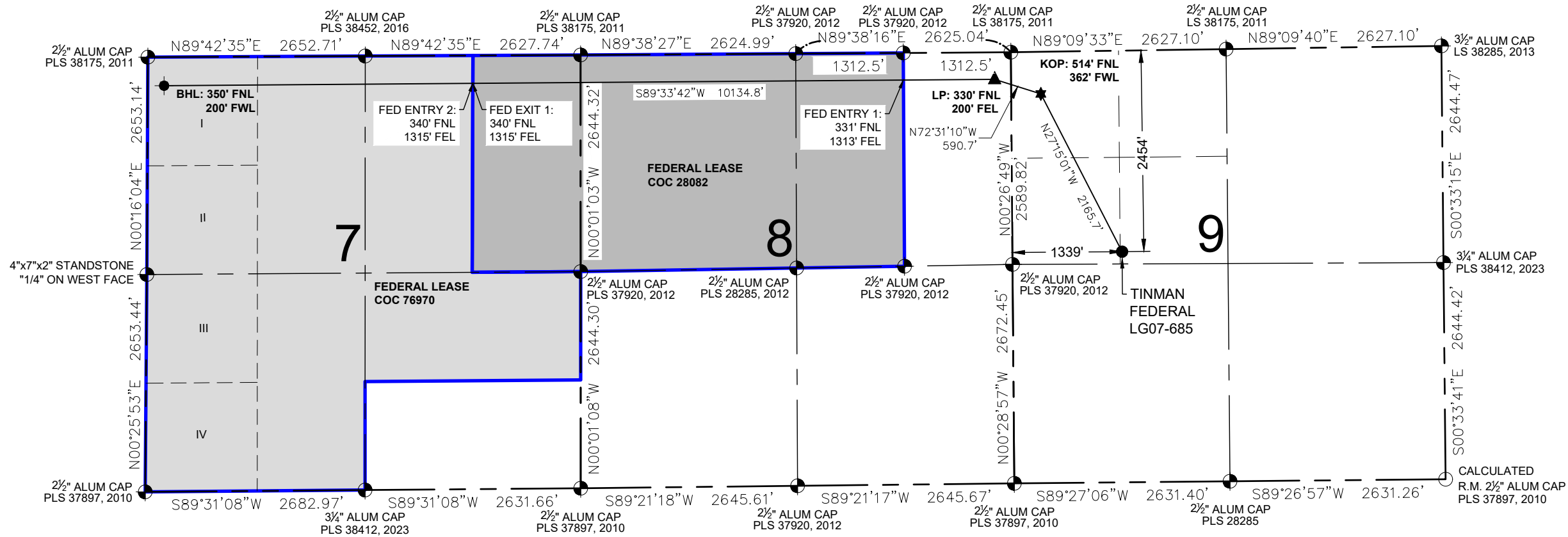


# TINMAN FEDERAL LG07-685 WELL LOCATION CERTIFICATE

**NOTES:**

1. THIS FIELD SURVEY CONFORMS TO THE MINIMUM STANDARDS SET BY THE ECMC, RULE NO. 216.
2. ALL BEARINGS ARE GRID BEARINGS OF THE COLORADO STATE PLANE COORDINATE SYSTEM, NORTH ZONE, NORTH AMERICAN DATUM 1983/2011. THE LINEAL DIMENSIONS AS SHOWN HEREIN ARE GRID DISTANCES BASED UPON THE "U.S. SURVEY FOOT." TO DERIVE GROUND DISTANCES MULTIPLY SHOWN DISTANCE BY 1.00024422.
3. FIELD VERIFICATION OF MONUMENTS COMPLETED WITHIN 1 YEAR OF SIGNATURE DATE, UNLESS OTHERWISE NOTED.



**LEGEND**

● = EXISTING MONUMENT	▲ = LANDING POINT
○ = CALCULATED POSITION	★ = KICKOFF POINT
● = PROPOSED WELL	LP = LANDING POINT
● = BOTTOM HOLE	BHL = BOTTOM HOLE
■ = FEDERAL LEASE 1	KOP = KICKOFF POINT
■ = FEDERAL LEASE 2	

I, KEVIN J. MARTIN, A LICENSED PROFESSIONAL LAND SURVEYOR IN THE STATE OF COLORADO, DO HEREBY STATE THAT THIS WELL LOCATION CERTIFICATE WAS MADE FROM AN ACTUAL FIELD SURVEY PERFORMED UNDER MY RESPONSIBLE CHARGE ON THE DATE SHOWN HEREON AND CORRECTLY SHOWS THE LOCATION OF THE WELL SHOWN HEREON, AS STAKED ON THE GROUND, AND THE LOCATION OF THE LINES OF THE PUBLIC LAND SURVEY SYSTEM TO MY KNOWLEDGE, INFORMATION, AND BELIEF. THIS CERTIFICATE DOES NOT REPRESENT A LAND SURVEY PLAT OR IMPROVEMENT SURVEY PLAT AS DEFINED BY C.R.S. 38-51-102 AND IS IN ACCORDANCE WITH THE APPLICABLE STANDARDS OF PRACTICE FOR PROFESSIONAL LAND SURVEYING. THIS CERTIFICATE IS NOT A GUARANTY OR WARRANTY, EITHER EXPRESSED OR IMPLIED.

**WELL TINMAN FEDERAL LG07-685 TO  
BE LOCATED 2454' FNL & 1339' FWL**

WELL BORE COORDINATES  
(NAD83)

**SURFACE LOCATION:  
GROUND ELEVATION=4815'**

LAT:40.677386°N  
LON:103.986061°W

**LANDING POINT:**  
LAT:40.683229°N  
LON:103.991538°W

**KICKOFF POINT:**  
LAT:40.682716°N  
LON:103.989518°W

**FED ENTRY 1:**  
LAT:40.683258°N  
LON:103.995551°W

**FED ENTRY 2:**  
LAT:40.683391°N  
LON:104.014496°W

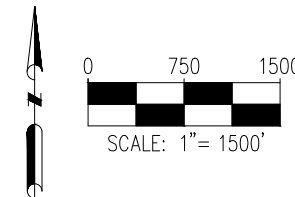
**FED EXIT 1:**  
LAT:40.683391°N  
LON:104.014496°W

**FED EXIT 2:**  
LAT:40.683391°N  
LON:104.014496°W

**BOTTOM HOLE:**  
LAT:40.683484°N  
LON:104.028078°W

**WELL NOTES:**  
BHL PROVIDED BY CLIENT.  
LAND SURFACE USE - RANGELAND  
SEE LOCATION DRAWING FOR ADDITIONAL  
IMPROVEMENTS WITHIN 2000'

PDOP=1.3  
GPS OPERATOR: STEVE ROERIG



KEVIN J. MARTIN, PLS 38580  
COLORADO LICENSED PROFESSIONAL LAND SURVEYOR  
FOR AND ON BEHALF OF P.F.S., LLC  
d.b.a. ASCENT GEOMATICS SOLUTIONS



8620 Wolff Court  
Westminster, CO 80031  
(303) 928-7128  
www.ascentgeomatics.com

FIELD DATE:

07-19-23

DRAWING DATE:

02-08-24

BY:

AWJ

CHECKED:

GLP

WELL NAME:

TINMAN FEDERAL LG07-685

SURFACE LOCATION:

SE1/4 NW1/4 SEC. 9, T8N, R59W, 6TH P.M.  
WELD COUNTY, COLORADO

PREPARED FOR:

