

# SCARECROW FEDERAL LG04-725 WELL LOCATION CERTIFICATE

**WELL BORE COORDINATES  
(NAD83)**

**SURFACE LOCATION:  
GROUND ELEVATION=4862'**

LATITUDE:40.682921°N  
LONGITUDE:103.983955°W

**LANDING POINT:**

LATITUDE:40.684650°N  
LONGITUDE:103.975405°W

**KICKOFF POINT:**

LATITUDE:40.682858°N  
LONGITUDE:103.976350°W

**BOTTOM HOLE:**

LATITUDE:40.713549°N  
LONGITUDE:103.976876°W

**FED ENTRY 1:**

LATITUDE:40.695104°N  
LONGITUDE:103.976208°W

**FED EXIT 1:**

LATITUDE:40.699357°N  
LONGITUDE:103.976534°W

**WELL NOTES:**

BH LOCATION PROVIDED BY CLIENT.  
LAND SURFACE USE - RANGELAND  
EX WELL LG16-757 DOROTHY STATE IS 486'  
NW AT 331' FNL AND 1429' FWL.  
SEE LOCATION DRAWING FOR ADDITIONAL  
IMPROVEMENTS WITHIN 2000'

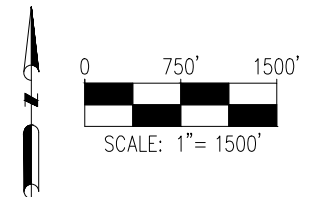
PDOP=1.2  
GPS OPERATOR: STEVE ROERIG

**NOTES:**

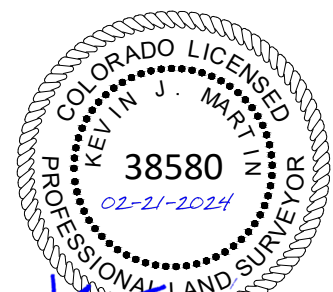
1. THIS FIELD SURVEY CONFORMS TO THE MINIMUM STANDARDS SET BY THE ECMC, RULE NO. 216.
2. ALL BEARINGS ARE GRID BEARINGS OF THE COLORADO STATE PLANE COORDINATE SYSTEM, NORTH ZONE, NORTH AMERICAN DATUM 1983/2011. THE LINEAL DIMENSIONS AS SHOWN HEREIN ARE GRID DISTANCES BASED UPON THE "U.S. SURVEY FOOT." TO DERIVE GROUND DISTANCES MULTIPLY SHOWN DISTANCE BY 1.00024422.
3. FIELD VERIFICATION OF MONUMENTS COMPLETED WITHIN 1 YEAR OF SIGNATURE DATE, UNLESS OTHERWISE NOTED.

**LEGEND**

- = EXISTING MONUMENT
- = CALCULATED POSITION
- = PROPOSED WELL
- = BOTTOM HOLE
- = FEDERAL LEASE 1
- ▲ = LANDING POINT
- ★ = KICKOFF POINT
- ◆ = EXISTING WELL
- ◆ = LANDING POINT
- ◆ = BOTTOM HOLE
- BHL = BOTTOM HOLE
- KOP = KICKOFF POINT



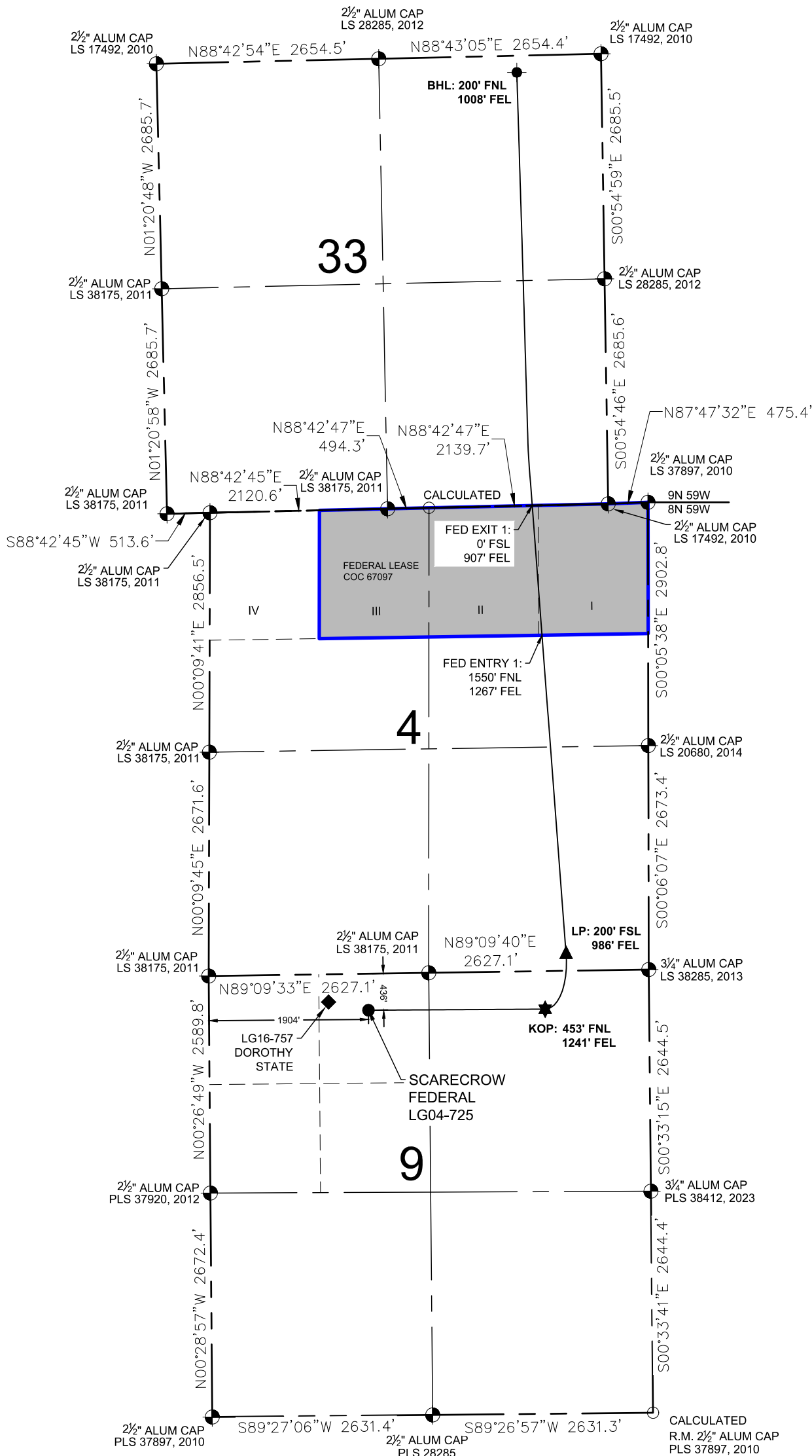
I, KEVIN J. MARTIN, A LICENSED PROFESSIONAL LAND SURVEYOR IN THE STATE OF COLORADO, DO HEREBY STATE THAT THIS WELL LOCATION CERTIFICATE WAS MADE FROM AN ACTUAL FIELD SURVEY PERFORMED UNDER MY RESPONSIBLE CHARGE ON THE DATE SHOWN HEREON AND CORRECTLY SHOWS THE LOCATION OF THE WELL SHOWN HEREON, AS STAKED ON THE GROUND, AND THE LOCATION OF THE LINES OF THE PUBLIC LAND SURVEY SYSTEM TO MY KNOWLEDGE, INFORMATION, AND BELIEF. THIS CERTIFICATE DOES NOT REPRESENT A LAND SURVEY PLAT OR IMPROVEMENT SURVEY PLAT AS DEFINED BY C.R.S. 38-51-102 AND IS IN ACCORDANCE WITH THE APPLICABLE STANDARDS OF PRACTICE FOR PROFESSIONAL LAND SURVEYING. THIS CERTIFICATE IS NOT A GUARANTY OR WARRANTY, EITHER EXPRESSED OR IMPLIED.



*Kevin J. Martin*

KEVIN J. MARTIN, PLS 38580  
COLORADO LICENSED PROFESSIONAL LAND SURVEYOR  
FOR AND ON BEHALF OF P.F.S., LLC  
d.b.a. ASCENT GEOMATICS SOLUTIONS

SHEET 1 OF 1



**WELL SCARECROW FEDERAL LG04-725  
TO BE LOCATED  
436' FNL & 1904' FWL**



FIELD DATE:  
07-19-23  
DRAWING DATE:  
02-20-24  
BY:  
GLP  
CHECKED:  
AWJ

WELL NAME:  
SCARECROW FEDERAL LG04-725  
SURFACE LOCATION:  
NE1/4 NW1/4 SEC. 9, T8N, R59W, 6TH P.M.  
WELD COUNTY, COLORADO

