



SITE NAME: Spike State CC30-18							DATE: 10/8/2024	REM. PROJECT #: 26849	WEATHER: 60s clear		
SITE DIRECTIONS: CR 46 X CR 61, S 2 mi, SE 800 ft, E into							CLIENT: Noble				
LEGALS AND LAT/LONG: 40.286904, -104.480435							TASMAN PERSONNEL: R. Yavinsky, C. Young				
SOIL TYPES: Well Graded Sand - SW							SURFACE GRADIENT: North				
SOIL SAMPLING							FACILITY INFRASTRUCTURE				
Date/Time	Soil Sample ID	PID (ppm)	Visual	Olfactory	Photo?	Grab or Lab Sample?	EQUIPMENT	Quantity	Photo?		
							Above Ground Storage Tank (AST)				
10-08-2024 08:00	FL01R-W@3'	0.5	No Staining	No Odor	Yes	Lab	Buried or Partially Buried Vessel				
10-08-2024 08:05	FL01-01@2'	0.3	No Staining	No Odor	Yes	Grab	Separator				
10-08-2024 08:07	FL01-02@3'	0.2	No Staining	No Odor	Yes	Grab	Emission Control Device (ECD)				
10-08-2024 08:11	FL01-03@3'	0.3	No Staining	No Odor	Yes	Lab	Dump Line				
10-08-2024 08:13	FL02-01@3'	0.2	No Staining	No Odor	Yes	Lab	Wellhead				
10-08-2024 08:16	FL01-04@3'	0.3	No Staining	No Odor	Yes	Grab	Flowline	2	✓		
10-08-2024 08:20	FL02-02@3'	0.4	No Staining	No Odor	Yes	Grab	Other:				
10-08-2024 08:26	FL01-05@3'	0.2	No Staining	No Odor	Yes	Grab	Soil Loads Removed				
10-08-2024 08:29	FL02-03@3'	0.3	No Staining	No Odor	Yes	Grab	IMPACTED SOIL IDENTIFIED?				
10-08-2024 09:34	FL01-06@3'	0.5	No Staining	No Odor	Yes	Grab	ESTIMATED VOLUME OF IMPACTS:				
10-08-2024 09:31	FL02-04@3'	0.5	No Staining	No Odor	Yes	Grab	Date	Number	CY		
10-08-2024 09:43	FL01-07@3'	0.4	No Staining	No Odor	Yes	Grab					
10-08-2024 09:45	FL02-05@3'	0.3	No Staining	No Odor	Yes	Grab					
10-08-2024 10:03	FL01-08@4'	0.2	No Staining	No Odor	Yes	Lab					
10-08-2024 10:05	FL02-06@4'	0.2	No Staining	No Odor	Yes	Lab					
10-08-2024 09:00	FL01-09@3'	0.2	No Staining	No Odor	Yes	Lab	Total Removed	0	0		
10-08-2024 09:03	FL02-07@3'	0.3	No Staining	No Odor	Yes	Lab	Disposal Facility:				
10-08-2024 09:08	FL01-10@4'	0.2	No Staining	No Odor	Yes	Lab	Groundwater Recovery				
10-08-2024 09:11	FL02-08@4'	0.2	No Staining	No Odor	Yes	Lab	DATE GW ENCOUNTERED:	DEPTH:			
10-08-2024 09:14	FL01-11@3'	0.1	No Staining	No Odor	Yes	Lab	GROUNDWATER IN CONTACT WITH IMPACTED SOIL?				
10-08-2024 09:16	FL02-09@3'	0.0	No Staining	No Odor	Yes	Lab					
10-08-2024 11:28	FL01R-S@3'	0.1	No Staining	No Odor	Yes	Lab	LNAPL OR SHEEN OBSERVED ON GW?				
GROUNDWATER SAMPLING							Date	BBLs			
Date/Time	Groundwater Sample ID	Depth Collected	Turbid?	Sheen?	Odor?	Photo?					
							Total Removed	0			
							Disposal Facility:				



Equipment ID: FL01R-W@3'		Equipment Type:		Equipment ID: FL01-01@2'		Equipment Type:	
Material:	Volume:	Contents:		Material:	Volume:	Contents:	
Notes/Conditions:				Notes/Conditions:			



Equipment ID: FL01-02@3'		Equipment Type:		Equipment ID: FL01-03@3'		Equipment Type:	
Material:	Volume:	Contents:		Material:	Volume:	Contents:	
Notes/Conditions:				Notes/Conditions:			



					
Material:	Volume:	Contents:	Equipment ID: FL01-04 @3'		Equipment Type:
Material:	Volume:	Contents:	Material:	Volume:	Contents:
Notes/Conditions:			Notes/Conditions:		

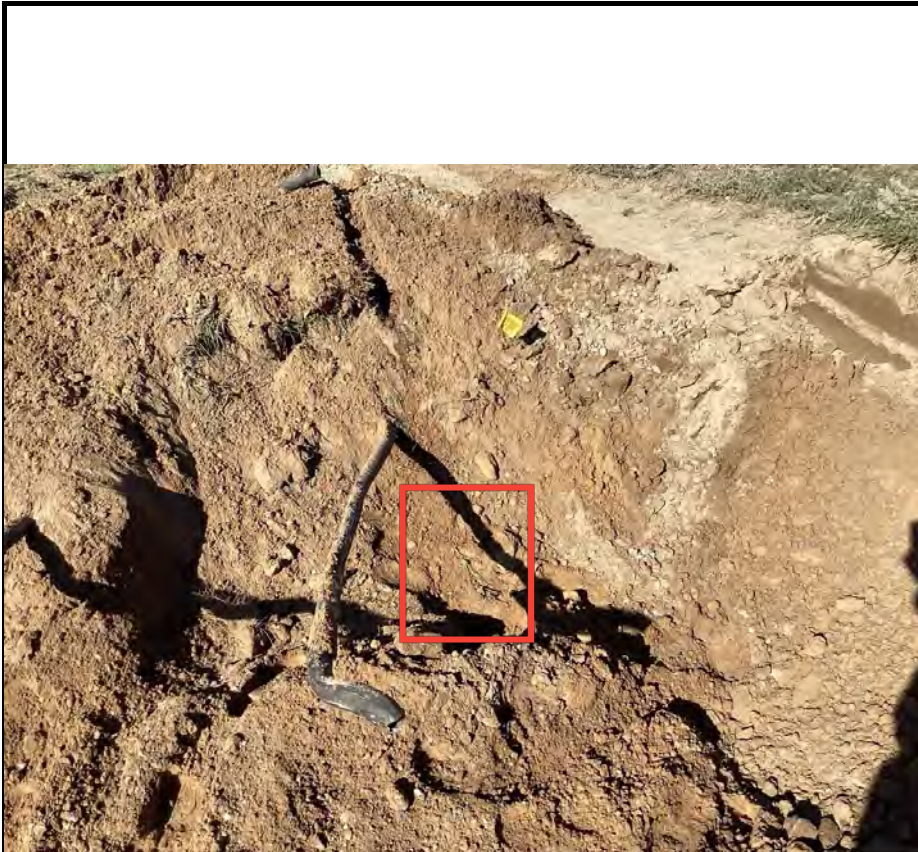


Equipment ID: FL02-02@3'		Equipment Type:		Equipment ID: FL01-05@3'		Equipment Type:	
Material:	Volume:	Contents:		Material:	Volume:	Contents:	
Notes/Conditions:				Notes/Conditions:			



Equipment ID: FL02-03 @3'			Equipment Type:			Equipment ID: FL01-06 @3'			Equipment Type:		
Material:		Volume:		Contents:		Material:		Volume:		Contents:	
Notes/Conditions: Water in hole is not groundwater, it is from Hydrovac						Notes/Conditions:					

					
Equipment ID: FL02-04 @ 3'		Equipment Type:	Equipment ID: FL01-07 @ 3'		Equipment Type:
Material:	Volume:	Contents:	Material:	Volume:	Contents:
Notes/Conditions:			Notes/Conditions:		



Equipment ID: FL02-05 @3'		Equipment Type:	
Material:	Volume:	Contents:	
Notes/Conditions:			

Equipment ID: FL01-08 @4'		Equipment Type:	
Material:	Volume:	Contents:	
Notes/Conditions:			



Equipment ID: FL02-06@4'		Equipment Type:		Equipment ID: FL01-09@3'		Equipment Type:	
Material:	Volume:	Contents:		Material:	Volume:	Contents:	
Notes/Conditions:				Notes/Conditions:			

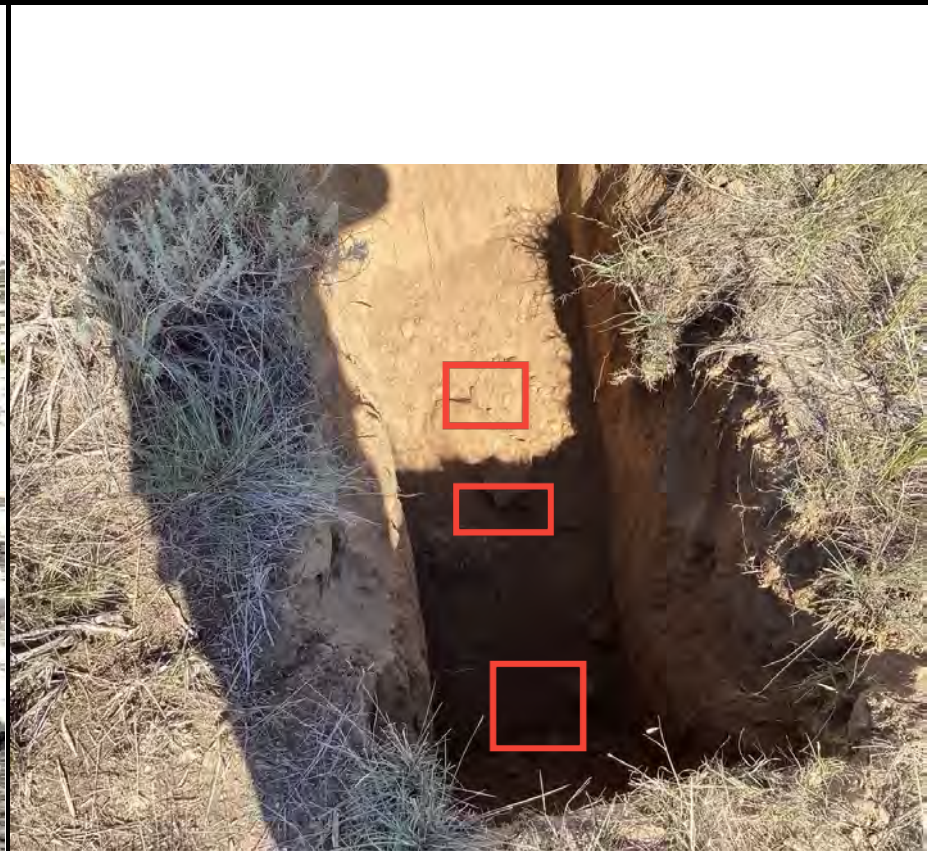


Equipment ID: FL02-07 @3'		Equipment Type:	
Material:	Volume:	Contents:	
Notes/Conditions:			

Equipment ID: FL01-10 @4'		Equipment Type:	
Material:	Volume:	Contents:	
Notes/Conditions:			

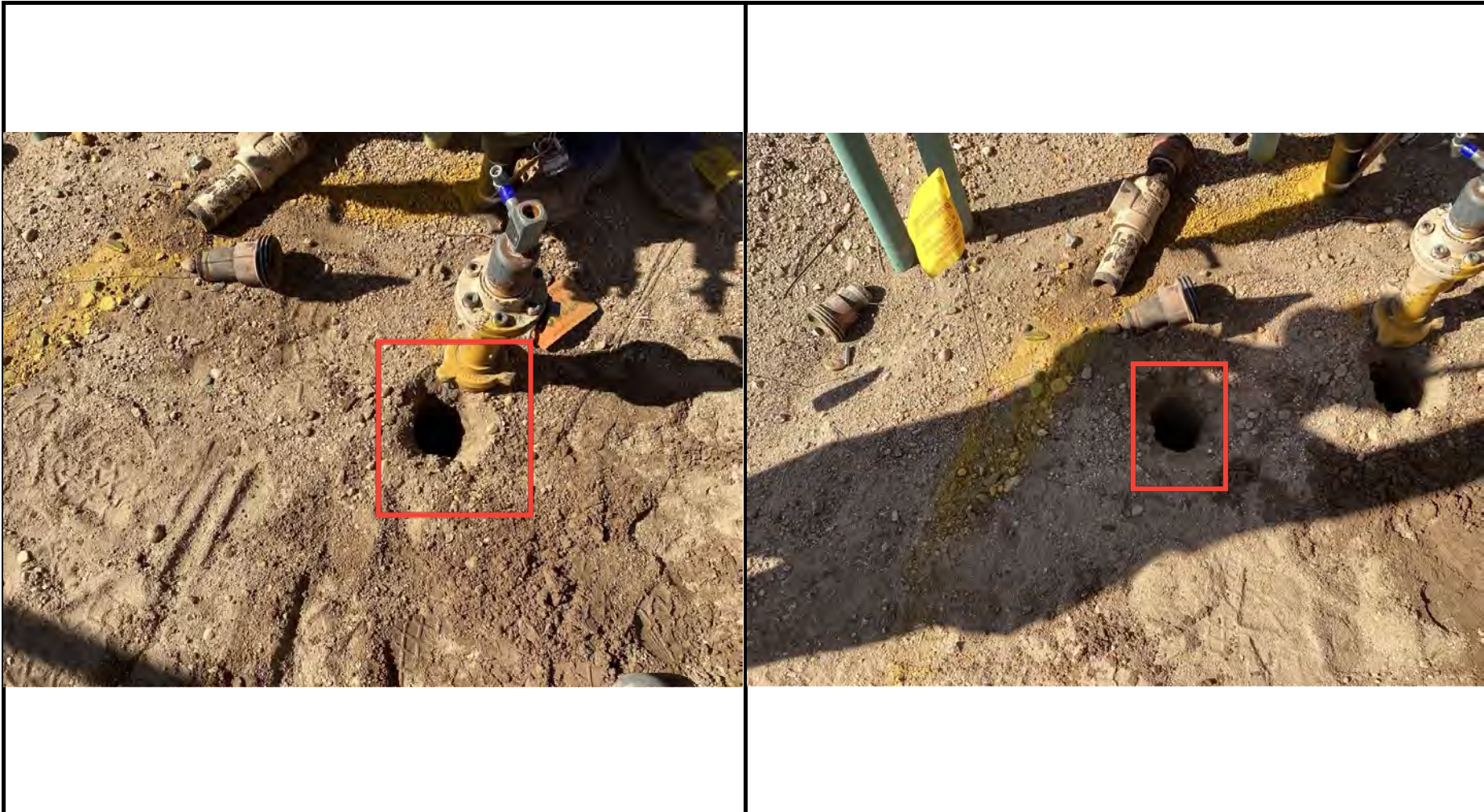


Equipment ID: FL02-08@4'		Equipment Type:		Equipment ID: FL01-11@3'		Equipment Type:	
Material:	Volume:	Contents:		Material:	Volume:	Contents:	
Notes/Conditions:				Notes/Conditions:			



Equipment ID: FL02-09 @ 3'		Equipment Type:	
Material:	Volume:	Contents:	
Notes/Conditions:			

Equipment ID: BKG01		Equipment Type:	
Material:	Volume:	Contents:	
Notes/Conditions:			



Equipment ID: FL01R-S@3'		Equipment Type:	
Material:	Volume:	Contents:	
Notes/Conditions:			

Equipment ID: FL02R-S@3'		Equipment Type:	
Material:	Volume:	Contents:	
Notes/Conditions:			

TABLE 1
FIELD DATA SUMMARY TABLE
NOBLE ENERGY, INC. - 100322
SPIKE STATE CC30-18 FLOWLINE, WELD COUNTY, COLORADO
REM # 26849

Sample ID	Sample Date	Depth (ft. bgs)	GPS Data Latitude/Longitude		PDOP Value	VOC Concentration (ppm)
FL01R-W@3'	10/08/24	3	40.286901	-104.480467	NC	0.5
FL01-01@2'	10/08/24	2	40.287536	-104.481422	0.9	0.3
FL01-02@3'	10/08/24	3	40.288263	-104.482515	1.0	0.2
FL01-03@3'	10/08/24	3	40.288730	-104.483164	1.0	0.3
FL02-01@3'	10/08/24	3	40.288770	-104.483165	0.9	0.2
FL01-04@3'	10/08/24	3	40.288681	-104.483903	1.0	0.3
FL02-02@3'	10/08/24	3	40.288696	-104.483910	1.0	0.4
FL01-05@3'	10/08/24	3	40.288552	-104.484592	1.0	0.2
FL02-03@3'	10/08/24	3	40.288594	-104.484577	1.0	0.3
FL01-06@3'	10/08/24	3	40.288528	-104.484886	0.8	0.5
FL02-04@3'	10/08/24	3	40.288555	-104.484898	0.8	0.5
FL01-07@3'	10/08/24	3	40.288430	-104.485862	0.7	0.4
FL02-05@3'	10/08/24	3	40.288441	-104.485870	0.7	0.3
FL01-08@4'	10/08/24	4	40.288349	-104.486620	0.8	0.2
FL02-06@4'	10/08/24	4	40.288366	-104.486609	0.8	0.2
FL01-09@3'	10/08/24	3	40.287988	-104.487233	1.1	0.2
FL02-07@3'	10/08/24	3	40.287984	-104.487251	1.1	0.3
FL01-10@4'	10/08/24	4	40.287359	-104.487000	1.0	0.2
FL02-08@4'	10/08/24	4	40.287350	-104.487013	1.0	0.2
FL01-11@3'	10/08/24	3	40.286589	-104.486383	1.0	0.1
FL02-09@3'	10/08/24	3	40.286563	-104.486450	1.0	0.0
FL01R-S@3'	10/08/24	3	40.286350	-104.486483	0.9	0.1
FL02R-S@3'	10/08/24	3	40.286354	-104.486481	1.0	0.2
BKG01@2'	10/08/24	2	40.286977	-104.486370	0.8	0.1
BKG01@3'	10/08/24	3	40.286977	-104.486370	0.8	0.1
BKG01@4'	10/08/24	4	40.286977	-104.486370	0.8	0.1

Notes:

1. Global Positioning System (GPS) data is provided in decimal degrees using North American Datum (NAD) 83 UTM Zone 13 North.
2. Volatile organic compound (VOC) concentrations are measured in the field using a photoionization detector (PID).

PDOP = Position Dilution of Precision

ppm = Parts per million

ft. = Feet

bgs = Below ground surface

NC = Data not collected

TABLE 2
SUMMARY OF VOLATILE ORGANIC SOIL CHEMISTRY DATA
NOBLE ENERGY, INC. - 100322
SPIKE STATE CC30-18 FLOWLINE, WELD COUNTY, COLORADO
REM # 26849

Sample ID	Sample Date	Depth (ft. bgs)	Benzene (mg/kg)	Toluene (mg/kg)	Ethyl-Benzene (mg/kg)	Xylenes (mg/kg)	1,2,4-Trimethyl-Benzene (mg/kg)	1,3,5-Trimethyl-Benzene (mg/kg)	Naphthalene (mg/kg)	TPH (mg/kg)	TPH GRO (mg/kg)	TPH DRO (mg/kg)	TPH ORO (mg/kg)
ECMC Table 915-1 Limits (Residential SSL)			1.2	490	5.8	58	30	27	2	500	500**		
ECMC Table 915-1 Limits (Protection of Groundwater SSL)			0.0026	0.69	0.78	9.9	0.0081	0.0087	0.0038	500	500**		
FL01R-W@3'	10/08/24	3	<0.0020	<0.0050	<0.0050	<0.010	<0.0050	<0.0050	<0.0038	<500	<0.50	<50	<50
FL01-03@3'	10/08/24	3	<0.0020	<0.0050	<0.0050	<0.010	<0.0050	<0.0050	0.045	<500	<0.50	<50	<50
FL02-01@3'	10/08/24	3	<0.0020	<0.0050	<0.0050	<0.010	<0.0050	<0.0050	0.069	<500	<0.50	<50	<50
FL01-08@4'	10/08/24	4	<0.0020	<0.0050	<0.0050	<0.010	<0.0050	<0.0050	0.015	<500	<0.50	<50	<50
FL02-06@4'	10/08/24	4	<0.0020	<0.0050	<0.0050	<0.010	<0.0050	<0.0050	<0.0038	<500	<0.50	<50	<50
FL01-09@3'	10/08/24	3	<0.0020	<0.0050	<0.0050	<0.010	<0.0050	<0.0050	<0.0038	<500	<0.50	<50	<50
FL02-07@3'	10/08/24	3	<0.0020	<0.0050	<0.0050	<0.010	<0.0050	<0.0050	0.0039	<500	<0.50	<50	<50
FL01-10@4'	10/08/24	4	<0.0020	<0.0050	<0.0050	<0.010	<0.0050	<0.0050	<0.0038	<500	<0.50	<50	<50
FL02-08@4'	10/08/24	4	<0.0020	<0.0050	<0.0050	<0.010	<0.0050	<0.0050	0.14	100	<0.50	100	<50
FL01-11@3'	10/08/24	3	<0.0020	<0.0050	<0.0050	<0.010	<0.0050	<0.0050	<0.0038	<500	<0.50	<50	<50
FL02-09@3'	10/08/24	3	<0.0020	<0.0050	<0.0050	<0.010	<0.0050	<0.0050	<0.0038	<500	<0.50	<50	<50
FL01R-S@3'	10/08/24	3	<0.0020	<0.0050	<0.0050	<0.010	<0.0050	<0.0050	<0.0038	<500	<0.50	<50	<50
FL02R-S@3'	10/08/24	3	<0.0020	<0.0050	<0.0050	<0.010	<0.0050	<0.0050	<0.0038	<500	<0.50	<50	<50

Notes:

- Bold** values exceed the ECMC Table 915-1 limit(s).
- Pink & blue highlighted soil analytical values indicate an exceedance of the referenced soil screening level (SSL).
- * Indicates laboratory minimum detection limit in excess of SSL.
- ** Summation of GRO+DRO+ORO must be less than 500 mg/kg.

ECMC = Energy & Carbon Management Commission

(<) = Analytical result is less than the indicated laboratory reporting limit.

TPH-GRO = Total petroleum hydrocarbons - gasoline range organics

TPH-DRO = Total petroleum hydrocarbons - diesel range organics

TPH-ORO = Total petroleum hydrocarbons - oil range organics

mg/kg = Milligrams per kilogram

ft. = Feet

bgs = Below ground surface

TABLE 3
SUMMARY OF POLYCYCLIC AROMATIC HYDROCARBON SOIL CHEMISTRY DATA
NOBLE ENERGY, INC. - 100322
SPIKE STATE CC30-18 FLOWLINE, WELD COUNTY, COLORADO
REM # 26849

Sample ID	Sample Date	Depth (ft. bgs)	Acenaphthene (mg/kg)	Anthracene (mg/kg)	Benzo (a) Anthracene (mg/kg)	Benzo (a) Pyrene (mg/kg)	Benzo (b) Fluoranthene (mg/kg)	Benzo (k) Fluoranthene (mg/kg)	Chrysene (mg/kg)	Dibenzo (a,h) Anthracene (mg/kg)	Fluoranthene (mg/kg)	Fluorene (mg/kg)	Indeno (1,2,3-cd) Pyrene (mg/kg)	Pyrene (mg/kg)	1-Methyl - Naphthalene (mg/kg)	2-Methyl- Naphthalene (mg/kg)
ECMC Table 915-1 Limits (Residential SSL)			360	1,800	1.1	0.11	1.1	11	110	0.11	240	240	1.1	180	18	24
ECMC Table 915-1 Limits (Protection of Groundwater SSL)			0.55	5.8	0.011	0.24	0.3	2.9	9	0.096	8.9	0.54	0.98	1.3	0.006	0.019
FL01R-W@3'	10/08/24	3	<0.00500	<0.00500	<0.00500	<0.00500	<0.00500	<0.00500	<0.00500	<0.00500	<0.00500	<0.00500	<0.00500	<0.00500	<0.00500	<0.00500
FL01-03@3'	10/08/24	3	0.0114	0.0206	0.0227	0.0136	0.0213	0.00761	0.0216	<0.00500	0.0596	0.0146	0.0077	0.0461	<0.00500	<0.00500
FL02-01@3'	10/08/24	3	0.233	1.71	0.616	0.313	0.491	0.234	0.823	0.0436	1.68	0.383	0.191	1.39	0.0184	0.0406
FL01-08@4'	10/08/24	4	0.0556	0.0754	0.115	0.0751	0.120	0.0426	0.104	0.00802	0.282	0.0668	0.0397	0.221	0.0074	0.0142
FL02-06@4'	10/08/24	4	<0.00500	0.00665	0.0161	0.0101	0.0171	0.00583	0.0148	<0.00500	0.0451	<0.00500	0.00504	0.0352	<0.00500	<0.00500
FL01-09@3'	10/08/24	3	<0.00500	<0.00500	<0.00500	<0.00500	<0.00500	<0.00500	<0.00500	<0.00500	<0.00500	<0.00500	<0.00500	<0.00500	<0.00500	<0.00500
FL02-07@3'	10/08/24	3	0.0144	0.0564	0.0261	0.0151	0.0233	0.00894	0.0320	<0.00500	0.0690	0.0182	0.00689	0.0553	<0.00500	<0.00500
FL01-10@4'	10/08/24	4	<0.00500	<0.00500	<0.00500	<0.00500	<0.00500	<0.00500	<0.00500	<0.00500	0.00644	<0.00500	<0.00500	<0.00500	<0.00500	<0.00500
FL02-08@4'	10/08/24	4	0.426	0.741	1.47	1.14	1.89	0.675	1.39	0.141	2.05	<0.00500	0.620	2.46	0.0398	0.0695
FL01-11@3'	10/08/24	3	<0.00500	0.00711	0.0111	0.00661	0.0127	<0.00500	0.0108	<0.00500	0.0282	0.00589	<0.00500	0.0222	<0.00500	<0.00500
FL02-09@3'	10/08/24	3	0.00685	0.0244	0.0164	0.00888	0.0151	0.00523	0.0176	<0.00500	0.0456	0.00899	0.00627	0.0367	<0.00500	<0.00500
FL01R-S@3'	10/08/24	3	<0.00500	<0.00500	<0.00500	<0.00500	<0.00500	<0.00500	<0.00500	<0.00500	<0.00500	<0.00500	<0.00500	<0.00500	<0.00500	<0.00500
FL02R-S@3'	10/08/24	3	<0.00500	<0.00500	<0.00500	<0.00500	<0.00500	<0.00500	<0.00500	<0.00500	<0.00500	<0.00500	<0.00500	<0.00500	<0.00500	<0.00500

Notes:

- Bold** values exceed the ECMC Table 915-1 limit(s).
- Pink & blue highlighted soil analytical values indicate an exceedance of the referenced soil screening level (SSL).
- * Indicates laboratory minimum detection limit in excess of SSL.

ECMC = Colorado Energy & Carbon Management Commission

(<) = Analytical result is less than the indicated laboratory reporting limit.

ft. = Feet

bgs = Below ground surface

mg/kg = Milligrams per kilogram

TABLE 4
SUMMARY OF SOIL SUITABILITY FOR RECLAMATION
NOBLE ENERGY, INC. - 100322
SPIKE STATE CC30-18 FLOWLINE, WELD COUNTY, COLORADO
REM # 26849

Sample ID	Sample Date	Depth (ft. bgs)	pH (Standard Units)	EC (mmhos/cm)	SAR (Standard Units)	Boron (mg/L)
ECMC Table 915-1 Soil Suitability Limits			6 - 8.3	<4	<6	2
FL01R-W@3'	10/08/24	3	7.96	0.210	0.183	<2.00
FL01-03@3'	10/08/24	3	7.01	0.0577	0.0254	<2.00
FL02-01@3'	10/08/24	3	7.44	0.0534	0.0260	<2.00
FL01-08@4'	10/08/24	4	7.11	0.0450	0.0277	<2.00
FL02-06@4'	10/08/24	4	7.33	0.0422	0.0456	<2.00
FL01-09@3'	10/08/24	3	6.62	0.0998	0.0285	<2.00
FL02-07@3'	10/08/24	3	6.18	0.0776	0.0297	<2.00
FL01-10@4'	10/08/24	4	7.37	0.0217	0.0325	<2.00
FL02-08@4'	10/08/24	4	7.03	0.0346	0.0463	<2.00
FL01-11@3'	10/08/24	3	6.71	0.0595	0.0294	<2.00
FL02-09@3'	10/08/24	3	7.06	0.0331	0.0304	<2.00
FL01R-S@3'	10/08/24	3	6.46	0.0442	0.0349	<2.00
FL02R-S@3'	10/08/24	3	6.42	0.0637	0.0165	<2.00
BKG01@2'	10/08/24	2	7.14	0.0291	0.0395	<2.00
BKG01@3'	10/08/24	3	7.35	0.0217	0.0389	<2.00
BKG01@4'	10/08/24	4	7.33	0.0284	0.0601	<2.00
Maximum Root Background Concentration (0 - 3 ft)			-	-	-	-
Maximum Background Concentration			-	-	-	-

Notes:

1. **Bold** faced values exceed the ECMC Table 915-1 limit(s), but are within background concentrations.
2. **Red** faced values exceed the ECMC Table 915-1 limit(s) and native background concentrations.
3. Brown highlighted soil analytical values indicate a regulatory exceedance.

ECMC = Colorado Energy & Carbon Management Commission

EC = Electrical conductivity

SAR = Sodium adsorption ratio

mmhos/cm = millimhos per centimeter

mg/L = milligram per liter

(<) = Analytical result is less than the indicated laboratory reporting limit.

ft. = Feet

bgs = Below ground surface

TABLE 5
SUMMARY OF METALS IN SOIL CHEMISTRY DATA
NOBLE ENERGY, INC. - 100322
SPIKE STATE CC30-18 FLOWLINE, WELD COUNTY, COLORADO
REM # 26849

Sample ID	Sample Date	Depth (ft. bgs)	Arsenic (mg/kg)	Barium (mg/kg)	Cadmium (mg/kg)	Chromium (VI) ^[4] (mg/kg)	Copper (mg/kg)	Lead (mg/kg)	Nickel (mg/kg)	Selenium (mg/kg)	Silver (mg/kg)	Zinc (mg/kg)
ECMC Table 915-1 Limits (Residential SSL)			0.68	15,000	71	0.3	3,100	400	1,500	390	390	23,000
ECMC Table 915-1 Limits (Protection of Groundwater SSL)			0.29	82	0.38	0.00067	46	14	26	0.26	0.8	370
FL01R-W@3'	10/08/24	3	1.69	54.4	<0.200	<0.30	5.05	23.1	3.47	<0.260	<0.0200	15.7
FL01-03@3'	10/08/24	3	1.10	31.7	<0.200	<0.30	2.45	3.06	2.33	<0.260	<0.0200	10.2
FL02-01@3'	10/08/24	3	1.20	26.6	<0.200	<0.30	2.57	3.15	2.27	<0.260	<0.0200	10.4
FL01-08@4'	10/08/24	4	1.41	36.9	<0.200	<0.30	3.09	4.06	2.99	<0.260	<0.0200	13.2
FL02-06@4'	10/08/24	4	1.49	41.2	<0.200	<0.30	3.22	3.90	3.37	<0.260	<0.0200	15.0
FL01-09@3'	10/08/24	3	1.24	33.8	<0.200	<0.30	3.04	4.29	2.66	<0.260	<0.0200	12.8
FL02-07@3'	10/08/24	3	1.21	34.9	<0.200	<0.30	2.91	3.66	2.66	<0.260	<0.0200	12.2
FL01-10@4'	10/08/24	4	1.73	32.9	<0.200	<0.30	2.63	3.16	2.89	<0.260	<0.0200	11.9
FL02-08@4'	10/08/24	4	1.16	31.9	<0.200	<0.30	2.47	3.27	2.55	<0.260	<0.0200	10.9
FL01-11@3'	10/08/24	3	1.28	36.1	<0.200	<0.30	2.89	4.22	2.93	<0.260	<0.0200	12.3
FL02-09@3'	10/08/24	3	0.980	33.4	<0.200	<0.30	2.40	3.15	2.34	<0.260	<0.0200	10.6
FL01R-S@3'	10/08/24	3	1.47	34.7	<0.200	<0.30	2.79	3.83	2.54	<0.260	<0.0200	11.9
FL02R-S@3'	10/08/24	3	1.25	34.8	<0.200	<0.30	4.88	4.45	2.79	<0.260	<0.0200	13.2
BKG01@2'	10/08/24	2	1.21	37.3	<0.200	<0.30	3.02	3.58	2.96	<0.260	<0.0200	13.7
BKG01@3'	10/08/24	3	1.10	34.9	<0.200	<0.30	2.65	3.24	2.54	<0.260	<0.0200	12.3
BKG01@4'	10/08/24	4	1.04	32.7	<0.200	<0.30	2.65	3.11	2.52	<0.260	0.0232	11.4
Maximum Background Concentration			1.21	-	-	-	-	3.58	-	-	-	-
Maximum Background Concentration X 1.25			1.51	-	-	-	-	4.48	-	-	-	-
Mean Background Concentration			1.12	-	-	-	-	3.31	-	-	-	-
Mean Background Concentration X 1.25			1.40	-	-	-	-	4.14	-	-	-	-

Notes:

- 1. Bold** faced values exceed the ECMC Table 915-1 limit(s), but are within 1.25x background concentrations.
- 2. Bold** faced values exceed the ECMC Table 915-1 limit(s) and native background concentrations.
- Red & blue highlighted soil analytical values indicate an exceedance of the referenced soil screening level (SSL).
- Compound falls within ECMC Table 915-1 Footnote 9.
- Non-detect background results accounted for in the highest background concentration by using the reporting limit.

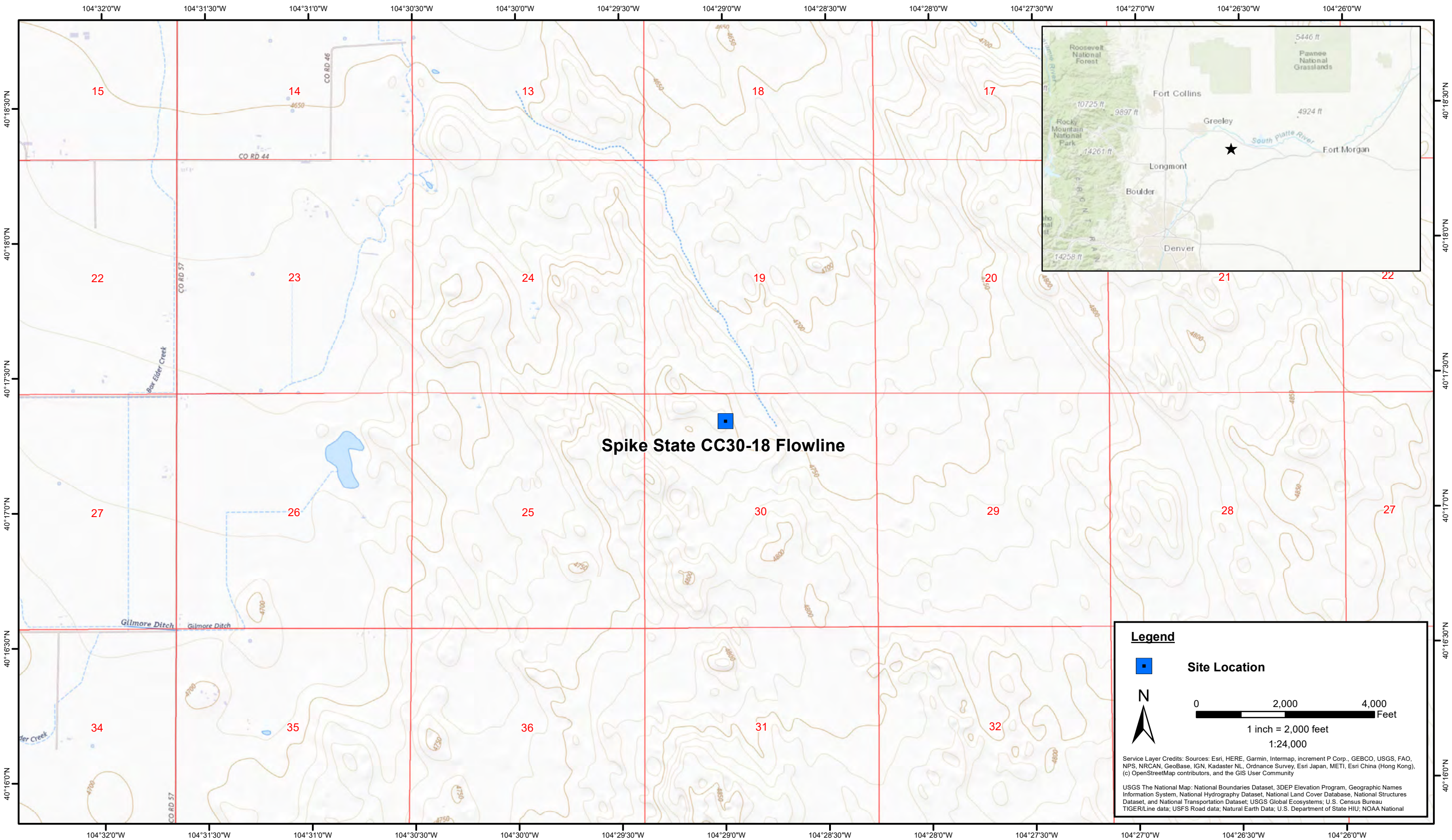
ECMC = Energy & Carbon Management Commission

(<) = Analytical result is less than the indicated laboratory reporting limit.

mg/kg = Milligrams per kilogram

ft. = Feet

bgs = Below ground surface



DATE: October 2024
 DESIGNED BY: J. Whritenour
 DRAWN BY: L. Reed

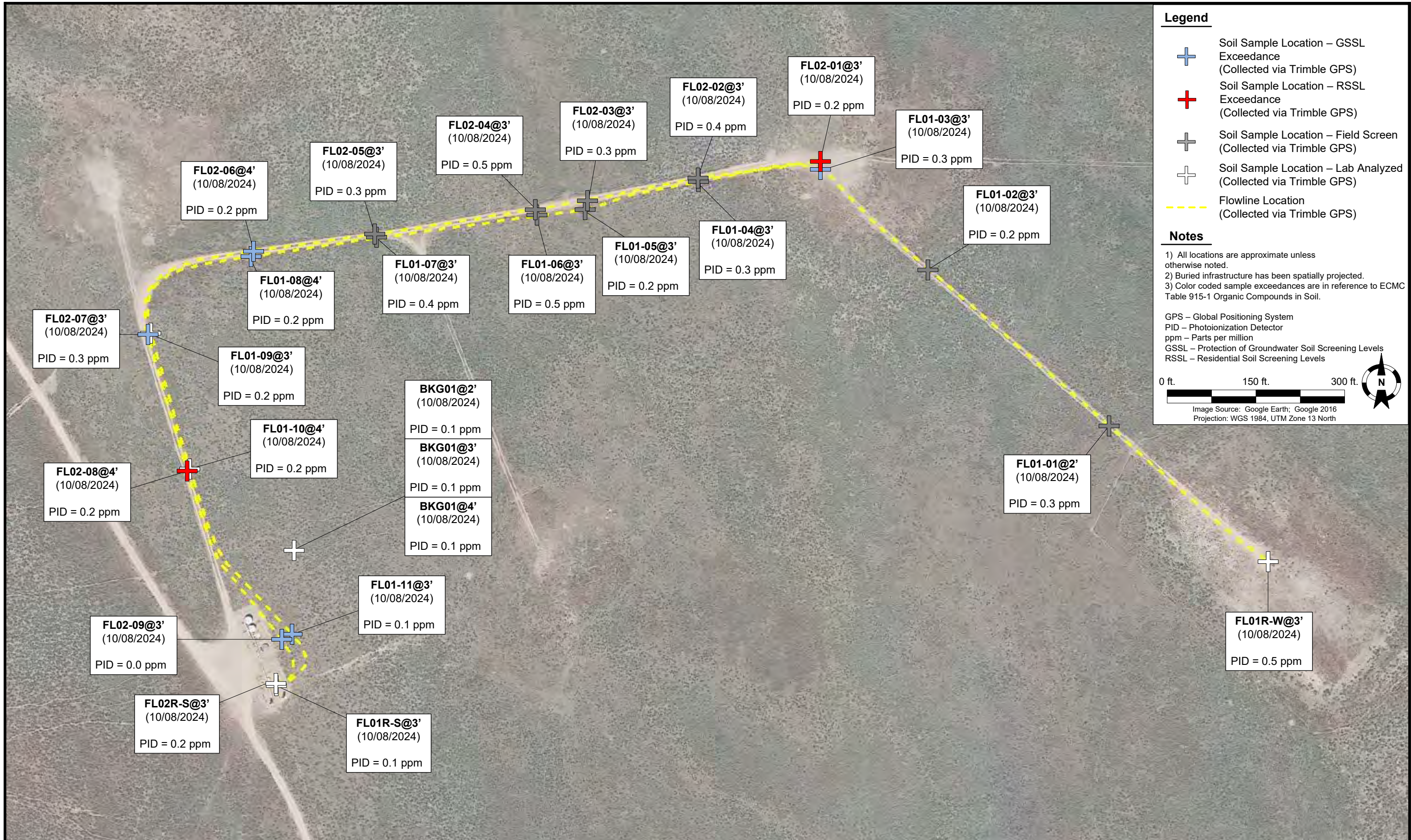


Tasman, Inc.
 6855 W. 119th Ave
 Broomfield, CO 80020

Noble Energy Inc. - 100322 - DJ Basin
Spike State CC30-18 Flowline
 NWNE, Section 30, Township 4 North, Range 63 West
 Weld County, Colorado

Site Location Map

Figure
1



DATE: October 14, 2024

DESIGNED BY: J. Whritenour

DRAWN BY: M. Liston



Noble Energy, Inc. – 100322 – DJ Basin
Spike State CC30-18 Flowline
 NWNE, Section 30, Township 4 North, Range 63 West
 Weld County, Colorado

**FLOWLINE DECOMMISSIONING
 AND SOIL ANALYTICAL
 RESULTS MAP**
 (10/08/2024)

**FIGURE
 2**