

Inspection Photos
Facility 3 @ Rasmussen Flowline
Spill ID 487690

Confirmation soil sampling was conducted by Operator during ECMC inspection. Soil samples were collected in accordance with Rule 915.e.(2).b.



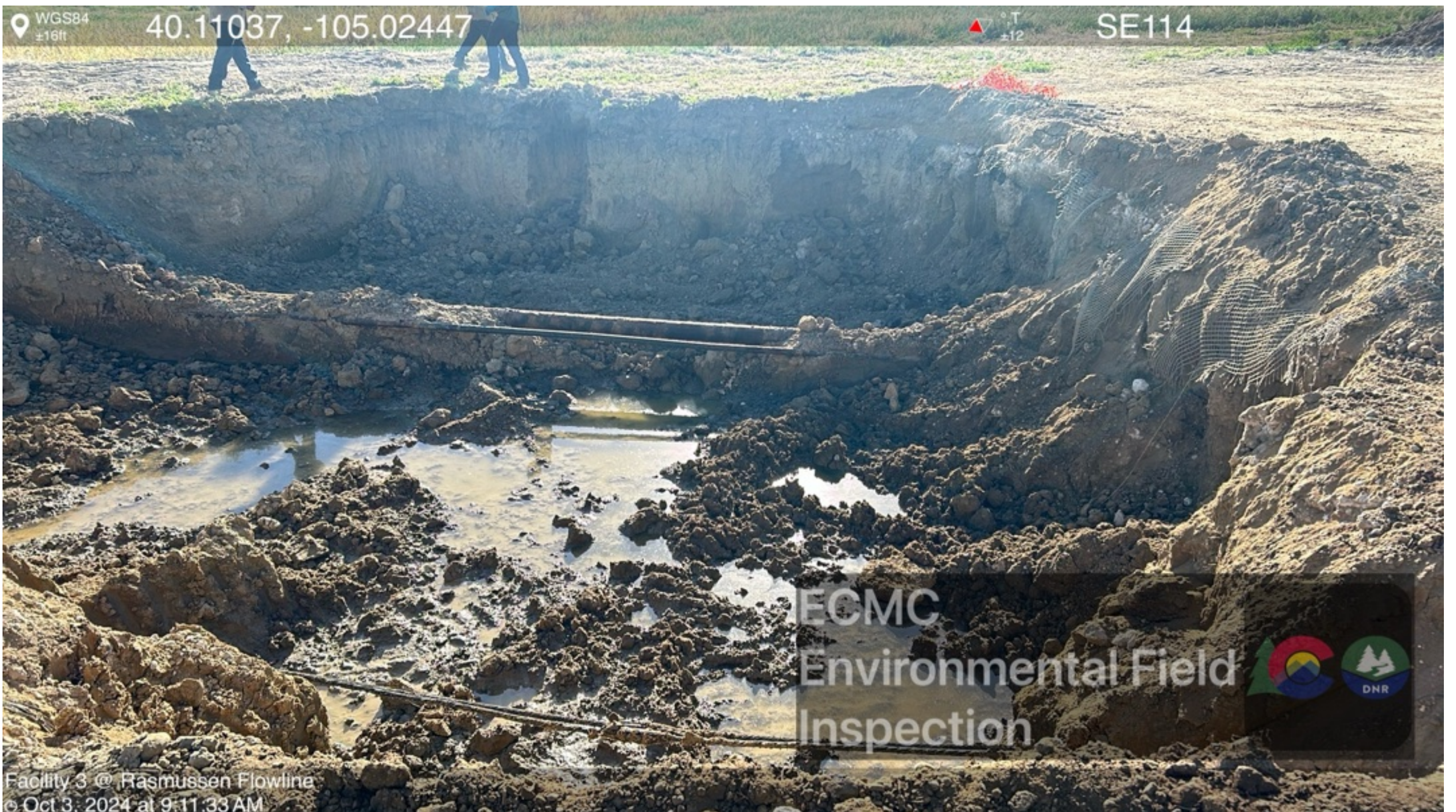
Inspection Photos
Facility 3 @ Rasmussen Flowline
Spill ID 487690

Confirmation soil sampling was conducted by Operator during ECMC inspection. Soil samples were collected in accordance with Rule 915.e.(2).b.



Inspection Photos
Facility 3 @ Rasmussen Flowline
Spill ID 487690

Confirmation soil sampling was conducted by Operator during ECMC inspection. Soil samples were collected in accordance with Rule 915.e.(2).b.



Inspection Photos
Facility 3 @ Rasmussen Flowline
Spill ID 487690

Groundwater with free product was observed at the base of the excavation.



Inspection Photos
Facility 3 @ Rasmussen Flowline
Spill ID 487690

Black staining was observed along portions of the western sidewall. A strong petroleum hydrocarbon odor was observed when soil in this area was disturbed.



Inspection Photos
Facility 3 @ Rasmussen Flowline
Spill ID 487690

Black staining was observed along portions of the western sidewall. A strong petroleum hydrocarbon odor was observed when soil in this area was disturbed.



Inspection Photos
Facility 3 @ Rasmussen Flowline
Spill ID 487690

Black staining was observed along portions of the western sidewall. A strong petroleum hydrocarbon odor was observed when soil in this area was disturbed.



Inspection Photos
Facility 3 @ Rasmussen Flowline
Spill ID 487690

Black staining was observed along portions of the western sidewall. A strong petroleum hydrocarbon odor was observed when soil in this area was disturbed.



Inspection Photos
Facility 3 @ Rasmussen Flowline
Spill ID 487690

Black staining was observed along portions of the western sidewall. A strong petroleum hydrocarbon odor was observed when soil in this area was disturbed.



Inspection Photos
Facility 3 @ Rasmussen Flowline
Spill ID 487690

Groundwater with free product was observed at the base of the excavation.



Inspection Photos
Facility 3 @ Rasmussen Flowline
Spill ID 487690

Black staining was observed along portions of the western sidewall. A strong petroleum hydrocarbon odor was observed when soil in this area was disturbed.



Inspection Photos
Facility 3 @ Rasmussen Flowline
Spill ID 487690

Black staining was observed along portions of the western sidewall. A strong petroleum hydrocarbon odor was observed when soil in this area was disturbed.



Groundwater with free product was observed at the base of the excavation.



Inspection Photos
Facility 3 @ Rasmussen Flowline
Spill ID 487690

Confirmation soil samples were collected from each quadrant of the base of the excavation. Gray to black staining was observed at the base of the excavation. A strong petroleum hydrocarbon odor was observed when soil and groundwater at the base of the excavation were disturbed.



Inspection Photos
Facility 3 @ Rasmussen Flowline
Spill ID 487690

Confirmation soil samples were collected from each quadrant of the base of the excavation. Gray to black staining was observed at the base of the excavation. A strong petroleum hydrocarbon odor was observed when soil and groundwater at the base of the excavation were disturbed.



Inspection Photos
Facility 3 @ Rasmussen Flowline
Spill ID 487690

Free product was observed migrating into the area of disturbance following sample collection from the base of the excavation.



Inspection Photos
Facility 3 @ Rasmussen Flowline
Spill ID 487690

Free product was observed migrating into the area of disturbance following sample collection from the base of the excavation.



Inspection Photos
Facility 3 @ Rasmussen Flowline
Spill ID 487690

Confirmation soil samples were collected from each quadrant of the base of the excavation. Gray to black staining was observed at the base of the excavation. A strong petroleum hydrocarbon odor was observed when soil at the base of the excavation was disturbed.



Inspection Photos
Facility 3 @ Rasmussen Flowline
Spill ID 487690

Groundwater with free product was observed at the base of the excavation.



Inspection Photos
Facility 3 @ Rasmussen Flowline
Spill ID 487690

Gray to black staining was observed at the base of the excavation and along portions of the western sidewall. Groundwater with free product was observed at the base of the excavation. A strong petroleum hydrocarbon odor was observed when impacted media was disturbed.



Groundwater with free product was observed at the base of the excavation.



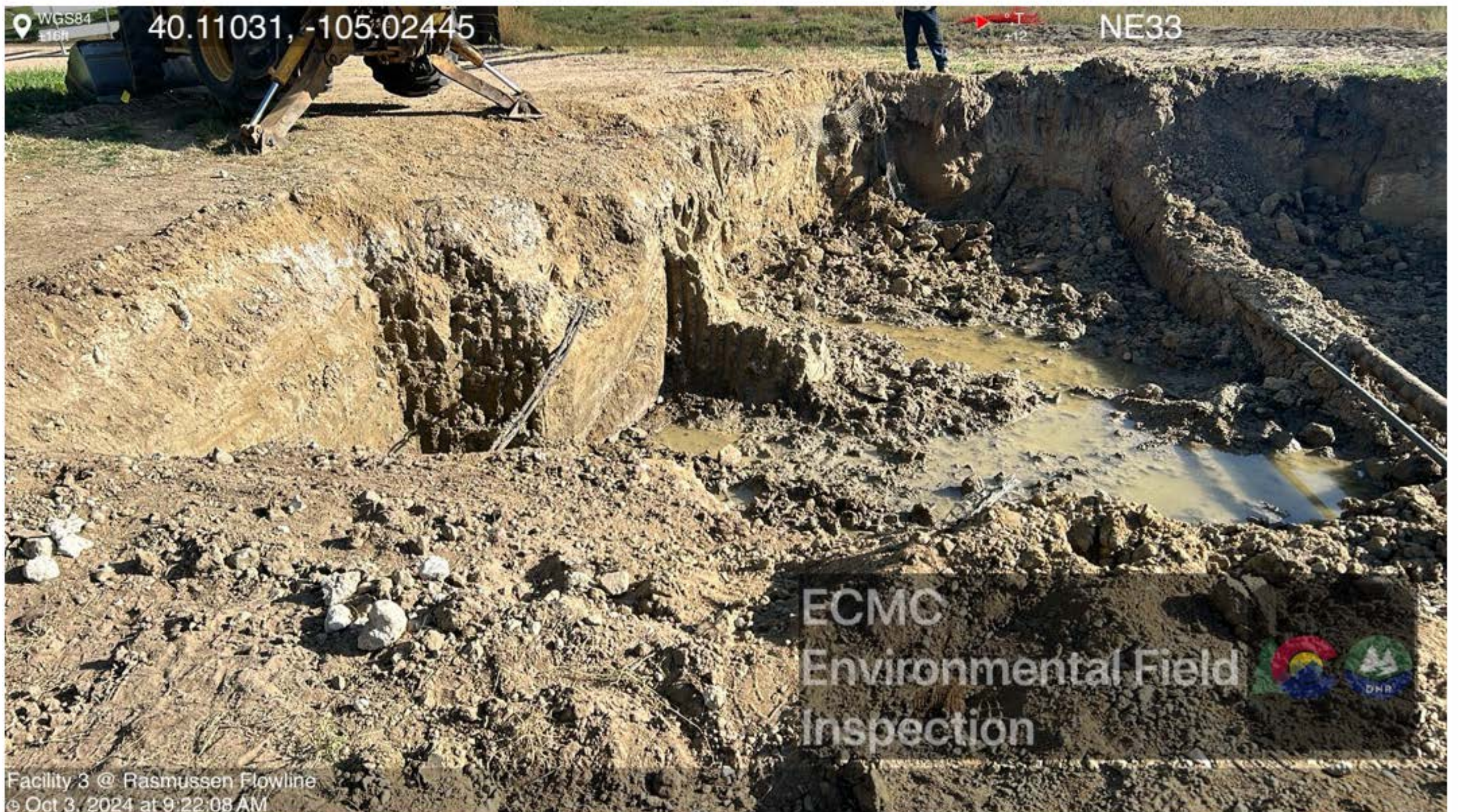
Inspection Photos
Facility 3 @ Rasmussen Flowline
Spill ID 487690

Gray to black staining was observed at the base of the excavation and along portions of the western sidewall. Groundwater with free product was observed at the base of the excavation. A strong petroleum hydrocarbon odor was observed when impacted media was disturbed.



Inspection Photos
Facility 3 @ Rasmussen Flowline
Spill ID 487690

Gray to black staining was observed at the base of the excavation and along portions of the western sidewall. Groundwater with free product was observed at the base of the excavation. A strong petroleum hydrocarbon odor was observed when impacted media was disturbed.



Inspection Photos
Facility 3 @ Rasmussen Flowline
Spill ID 487690

Gray to black staining was observed at the base of the excavation and along portions of the western sidewall. Groundwater with free product was observed at the base of the excavation. A strong petroleum hydrocarbon odor was observed when impacted media was disturbed.

