

TABLE 1
SUMMARY OF VOLATILE ORGANIC SOIL CHEMISTRY DATA
PDC 69175
WELLS RANCH 34F-402 TANK BATTERY, WELD COUNTY, COLORADO
REM #

Sample ID	Sample Date	Depth (ft)	Benzene (mg/kg)	Toluene (mg/kg)	Ethyl-Benzene (mg/kg)	Xylenes (mg/kg)	1,2,4- Trimethyl- Benzene (mg/kg)	1,3,5- Trimethyl- Benzene (mg/kg)	Naphthalene (mg/kg)	TPH (mg/kg)	TPH GRO (mg/kg)	TPH DRO (mg/kg)	TPH ORO (mg/kg)
ECMC Table 915-1 Limits (Residential SSL)			1.2	490	5.8	58	30	27	2	500	500**		
ECMC Table 915-1 Limits (Protection of Groundwater SSL)			0.0026	0.69	0.78	9.9	0.0081	0.0087	0.0038	500	500**		
Waste Char	4/2/2024	1	9.3	58	16	99	35	12	2.8	4480	3300	1000	180
SS-01	4/19/2024	1	<0.0020	<0.0050	<0.0050	<0.010	<0.0050	<0.0050	<0.0038	<100.5	<0.50	<50	<50
SS-02	4/19/2024	1	<0.0020	<0.0050	<0.0050	<0.010	<0.0050	<0.0050	<0.0038	210	<0.50	50	160
SS-03	4/19/2024	1	<0.0020	<0.0050	<0.0050	<0.010	<0.0050	<0.0050	<0.0038	257	<0.50	87	170
SS-04	4/19/2024	1	<0.0020	<0.0050	<0.0050	<0.010	<0.0050	<0.0050	<0.0038	136	<0.50	51	85
SS-05	4/19/2024	1	<0.0020	<0.0050	<0.0050	<0.010	<0.0050	<0.0050	<0.0038	<100.5	<0.50	<50	<50
SS-06	4/26/2024	1	<0.00200	<0.00200	<0.00200	<0.00200	<0.00200	<0.00200	<0.002	581	<0.200	<25.0	581
SS-07	4/26/2024	1	<0.00200	<0.00200	<0.00200	<0.00200	<0.00200	<0.00200	<0.002	605	<0.200	<25.0	605
SS-02-2	5/21/2024	1	<0.0020	<0.0050	<0.0050	<0.010	<0.0050	<0.0050	<0.0038	<100.5	<0.50	<50	265
SS-03-2	5/21/2024	1	<0.0020	<0.0050	<0.0050	<0.010	<0.0050	<0.0050	<0.0038	<100.5	<0.50	<50	<50
SS-06-2	5/21/2024	1	<0.0020	<0.0050	<0.0050	<0.010	<0.0050	<0.0050	<0.0038	<100.5	<0.50	<50	<50
SS-07-2	5/21/2024	1	<0.0020	<0.0050	<0.0050	<0.010	<0.0050	<0.0050	<0.0038	1040.3	<0.50	50.3	994
SS-07-3	6/5/2024	1	<0.00200	<0.00200	<0.00200	<0.00200	<0.00200	<0.00200	<0.002	112	<0.200	<25.0	112
SS-02-3	6/5/2024	1	<0.00200	<0.00200	<0.00200	<0.00200	<0.00200	<0.00200	<0.002	<125.2	<0.200	<25.0	<100
SS-07-2	8/19/2024	1.5	<0.0020	<0.0050	<0.0050	<0.010	<0.0050	<0.0050	<0.0038	<100.5	<0.50	<50	<50
SS-06	8/19/2024	1.5	<0.0020	<0.0050	<0.0050	<0.010	<0.0050	<0.0050	<0.0038	<100.5	<0.50	<50	<50
SS-07	8/19/2024	1.5	<0.0020	<0.0050	<0.0050	<0.010	<0.0050	<0.0050	<0.0038	<100.5	<0.50	<50	<50

1. Bold values exceed the ECMC Table 915-1 limit(s)

2. Red & blue highlighted soil analytical values indicate an exceedance of the referenced soil screening level (SSL)

3. * Indicates laboratory minimum detection limit in excess of SSL

4. ** Summation of GRO+DRO+ORO must be less than 500 mg/kg

NA - Not analyzed

= Source material characterization sample, excavated and transported off site for disposal.

= Material excavated and transported off site for disposal.

TABLE 2
SUMMARY OF POLYCYCLIC AROMATIC HYDROCARBON SOIL CHEMISTRY DATA
PDC 69175
WELLS RANCH 34F-402 TANK BATTERY, WELD COUNTY, COLORADO
REM #

Sample ID	Sample Date	Depth (ft)	Acenaphthene (mg/kg)	Anthracene (mg/kg)	Benzo (a) Anthracene (mg/kg)	Benzo (a) Pyrene (mg/kg)	Benzo (b) Fluoranthene (mg/kg)	Benzo (k) Fluoranthene (mg/kg)	Chrysene (mg/kg)	Dibenzo (a,h) Anthracene (mg/kg)	Fluoranthene (mg/kg)	Fluorene (mg/kg)	Indeno (1,2,3- cd) Pyrene (mg/kg)	Pyrene (mg/kg)	1-Methyl - Naphthalene (mg/kg)	2-Methyl- Naphthalene (mg/kg)
ECMC Table 915-1 Limits (Residential SSL)			360	1800	1.1	0.11	1.1	11	110	0.11	240	240	1.1	180	18	24
ECMC Table 915-1 Limits (Protection of Groundwater SSL)			0.55	5.8	0.011	0.24	0.3	2.9	9	0.096	8.9	0.54	0.98	1.3	0.006	0.019
Waste Char	4/2/2024	1	0.112	<0.00500	0.0768	0.00631	0.00674	0.00618	0.0401	<0.00500	0.00686	<0.00500	<0.00500	0.0283	1.99	11.2
SS-01	4/19/2024	1	<0.00500	<0.00500	0.00514	0.00631	0.0138	0.00618	0.00521	<0.00500	0.00685	<0.00500	<0.00500	0.0138	<0.00500	<0.00500
SS-02	4/19/2024	1	<0.00500	<0.00500	0.0215	0.0309	0.0696	0.0230	0.0269	<0.00500	0.0288	<0.00500	0.0401	0.0998	<0.00500	<0.00500
SS-03	4/19/2024	1	<0.00500	0.00567	0.0548	0.0626	0.100	0.0355	0.0585	<0.00500	0.0500	0.00588	0.129	0.266	<0.00500	<0.00500
SS-04	4/19/2024	1	<0.00500	<0.00500	<0.00500	<0.00500	<0.00500	<0.00500	<0.00500	<0.00500	<0.00500	<0.00500	<0.00500	0.0105	<0.00500	<0.00500
SS-05	4/19/2024	1	<0.00500	<0.00500	0.00721	0.0112	0.0182	0.0061	0.00922	<0.00500	0.00628	<0.00500	0.0182	0.0334	<0.00500	0.00506
SS-06	4/26/2024	1	<0.020	<0.020	0.051	0.071	0.068	0.03	0.076	<0.020	0.094	<0.020	0.077	0.084	<0.002	<0.002
SS-07	4/26/2024	1	<0.020	0.058	0.196	0.219	0.182	0.091	0.250	0.040	0.322	<0.020	0.194	0.326	<0.002	<0.002
SS-02-2	5/21/2024	1	<0.020	<0.020	0.012	<0.020	0.036	0.024	0.027	<0.020	<0.020	<0.020	0.031	<0.020	<0.002	<0.002
SS-03-2	5/21/2024	1	<0.020	<0.020	<0.005	<0.020	<0.020	<0.020	<0.020	<0.020	<0.020	<0.020	<0.020	<0.020	<0.002	<0.002
SS-06-2	5/21/2024	1	<0.020	<0.020	<0.005	<0.020	<0.020	<0.020	<0.020	<0.020	<0.020	<0.020	<0.020	<0.020	<0.002	<0.002
SS-07-2	5/21/2024	1	<0.020	<0.020	0.075	0.121	0.119	0.041	0.088	0.023	0.108	<0.020	0.156	0.101	<0.002	<0.002
SS-07-3	6/5/2024	1	<0.020	<0.020	0.009	<0.020	<0.020	<0.020	<0.020	<0.020	<0.020	<0.020	<0.020	<0.020	<0.002	<0.002
SS-02-3	6/5/2024	1	<0.020	<0.020	<0.005	<0.020	<0.020	<0.020	<0.020	<0.020	<0.020	<0.020	<0.020	<0.020	<0.002	<0.002
SS-07-2	8/19/2024	1.5	<0.00500	<0.00500	<0.00500	<0.00500	<0.00500	<0.00500	<0.00500	<0.00500	<0.00500	<0.00500	<0.00500	<0.00500	<0.00500	<0.00500
SS-06	8/19/2024	1.5	<0.00500	<0.00500	<0.00500	<0.00500	<0.00500	<0.00500	<0.00500	<0.00500	<0.00500	<0.00500	<0.00500	<0.00500	<0.00500	<0.00500
SS-07	8/19/2024	1.5	<0.00500	<0.00500	<0.00500	<0.00500	<0.00500	<0.00500	<0.00500	<0.00500	<0.00500	<0.00500	<0.00500	<0.00500	<0.00500	<0.00500

1. Bold values exceed the ECMC Table 915-1 limit(s)

2. Red & blue highlighted soil analytical values indicate an exceedance of the referenced soil screening level (SSL)

3. * Indicates laboratory minimum detection limit in excess of SSL

NA - Not analyzed

= Source material characterization sample, excavated and transported off site for disposal.

= Material excavated and transported off site for disposal.

TABLE 3
SUMMARY OF SOIL SUITABILITY FOR RECLAMATION
PDC 69175
WELLS RANCH 34F-402 TANK BATTERY, WELD COUNTY, COLORADO
REM #

Sample ID	Sample Date	Depth (ft)	pH (Standard Units)	EC (mmhos/cm)	SAR (Standard Units)	Boron (mg/L)
ECMC Table 915-1 Soil Suitability Limits			6 - 8.3	<4	<6	2
Waste Char	4/2/2024	1	7.66	0.306	0.524	<2.00
SS-01	4/19/2024	1	8.67	0.329	0.678	<2.00
SS-02	4/19/2024	1	8.56	0.332	0.378	<2.00
SS-03	4/19/2024	1	8.56	0.211	0.101	<2.00
SS-04	4/19/2024	1	9.34	0.569	1.82	<2.00
SS-05	4/19/2024	1	8.45	0.328	0.542	<2.00
SS-06	4/26/2024	1	8.35	0.260	0.828	0.227
SS-07	4/26/2024	1	8.48	0.287	1.48	0.139
SS-02-2	5/21/2024	1	8.38	0.342	0.905	0.434
SS-03-2	5/21/2024	1	9.10	0.464	12.8	0.193
SS-06-2	5/21/2024	1	8.61	0.422	2.64	0.598
SS-07-2	5/21/2024	1	8.43	0.198	1.10	0.188
SS-02-3	6/5/2024	1	8.32	0.401	0.805	0.589
SS-07-3	6/5/2024	1	8.60	0.367	1.76	0.867
BG-N	4/19/2024	1	7.12	0.127	0.0455	<2.00
BG-S	4/19/2024	1	7.25	0.425	0.383	<2.00
BG-E	4/19/2024	1	7.48	0.147	0.0147	<2.00
BG-W	4/19/2024	1	7.08	0.204	0.0471	<2.00
BG-IN	4/19/2024	1	8.59	0.214	0.114	<2.00
SS-08	8/19/2024	1	8.00	5.06	0.105	<2.00
SS-09	8/19/2024	1	8.19	7.01	0.959	<2.00
SS-10	8/19/2024	1	8.22	7.86	0.646	<2.00
SS-11	8/19/2024	1	8.25	0.238	0.528	<2.00
SS-12	8/19/2024	1	8.13	0.339	0.048	<2.00
SS-13	8/19/2024	1	7.87	0.219	0.203	<2.00
Maximum Root Background Concentration (0 - 3 ft)			8.59		0.114	
Average Root Background Concentration (0 - 3 ft)			7.50		0.121	

1. Bold faced values exceed the ECMC Table 915-1 limit(s)
2. Blue highlighted soil analytical values indicate a regulatory exceedance

NA - Not analyzed

 = Source material characterization sample, excavated and transported off site for disposal.
 = Material excavated and transported off site for disposal.

TABLE 4
SUMMARY OF METALS IN SOIL CHEMISTRY DATA
PDC 69175
WELLS RANCH 34F-402 TANK BATTERY, WELD COUNTY, COLORADO
REM #

Sample ID	Sample Date	Depth (ft)	Arsenic (mg/kg)	Barium (mg/kg)	Cadmium (mg/kg)	Chromium (VI) (mg/kg)	Copper (mg/kg)	Lead (mg/kg)	Nickel (mg/kg)	Selenium (mg/kg)	Silver (mg/kg)	Zinc (mg/kg)
ECMC Table 915-1 Limits (Residential SSL)			0.68	15000	71	0.3	3100	400	1500	390	390	23000
ECMC Table 915-1 Limits (Protection of Groundwater SSL)			0.29	82	0.38	0.00067	46	14	26	0.26	0.8	370
Waste Char	4/2/2024	1	2.27	80.5	0.342	<0.30	21.9	13.2	6.31	0.334	0.0646	37.7
SS-01	4/19/2024	1	2.14	88.9	0.427	<0.30	21.3	15.5	4.88	0.341	0.0851	43.1
SS-02	4/19/2024	1	2.61	78.3	0.301	<0.30	12.3	19.5	4.53	<0.236	0.0554	42.1
SS-03	4/19/2024	1	1.91	51.9	<0.200	<0.30	6.29	12.6	4.44	<0.260	0.0219	31.9
SS-04	4/19/2024	1	3.46	85.5	0.403	<0.30	22.4	16.2	4.61	0.301	0.0837	43.6
SS-05	4/19/2024	1	2.34	93	0.382	<0.30	22.1	19.0	4.96	0.307	0.0827	46.5
SS-06	4/26/2024	1	3.36	81.8	0.188	<0.135	9.23	17.2	7.76	0.479	<0.0911	53.6
SS-07	4/26/2024	1	2.39	64.4	0.141	0.16	<9.35	15.6	5.42	<0.243	<0.0935	65.8
SS-02-2	5/21/2024	1	3.44	124	0.280	<0.169	22.1	21.3	9.85	0.377	<0.0897	54.4
SS-03-2	5/21/2024	1	2.42	35.2	<0.0872	<0.113	<8.72	3.84	4.43	<0.227	<0.0872	<32.3
SS-06-2	5/21/2024	1	3.49	105	0.308	<0.108	25.3	17.7	9.07	0.499	<0.0929	50.0
SS-07-2	5/21/2024	1	2.86	70.6	0.170	<0.159	<9.38	13.3	6.18	<0.244	<0.0938	<34.7
SS-02-3	6/5/2024	1	2.13	82.0	0.255	<0.122	16.6	11.6	6.55	0.301	<0.0905	36.9
SS-07-3	6/5/2024	1	2.36	101	0.374	<0.178	23	16.2	8.96	0.43	0.105	53.4
BG-N	4/19/2024	1	4.23	68.4	<0.200	<0.30	7.25	7.75	7.66	<0.260	0.0302	29.6
BG-S	4/19/2024	1	2.40	66.1	0.241	<0.30	7.48	7.98	5.91	<0.260	<0.0200	26.2
BG-E	4/19/2024	1	2.44	54.8	<0.200	<0.30	5.24	6.48	5	<0.260	0.0222	20.8
BG-W	4/19/2024	1	2.98	76.8	0.234	<0.30	7.91	8.06	7.77	<0.260	0.0313	31.6
BG-IN	4/19/2024	1	3.22	119	0.57	<0.30	27.6	18.7	11.8	0.402	0.105	61.1
Maximum Root Zone Background Concentration (0 - 3 ft)			4.23	119	0.57			18.7		0.402		
125% Average Root Zone Background Concentration (0 - 3 ft)			3.82	96.3	0.29			12.24		0.36		

1. Bold values exceed the ECMC Table 915-1 limit(s)

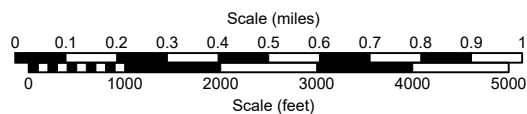
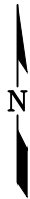
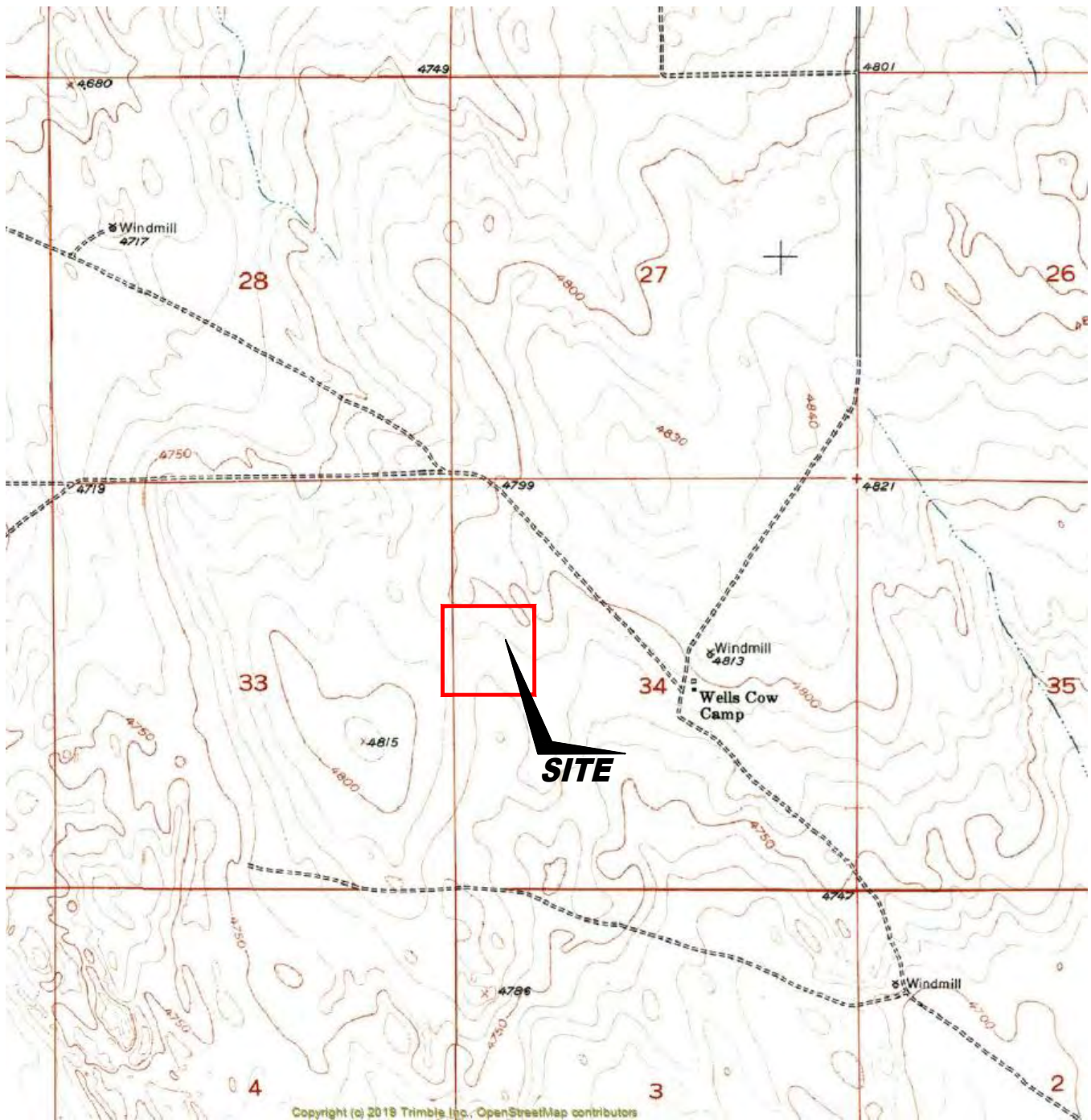
2. Red & blue highlighted soil analytical values indicate an exceedance of the referenced soil screening level (SSL)

* Indicates laboratory minimum detection limit in excess of SSL

NA - Not analyzed

Source material characterization sample, excavated and transported off site for disposal.

Material excavated and transported off site for disposal.



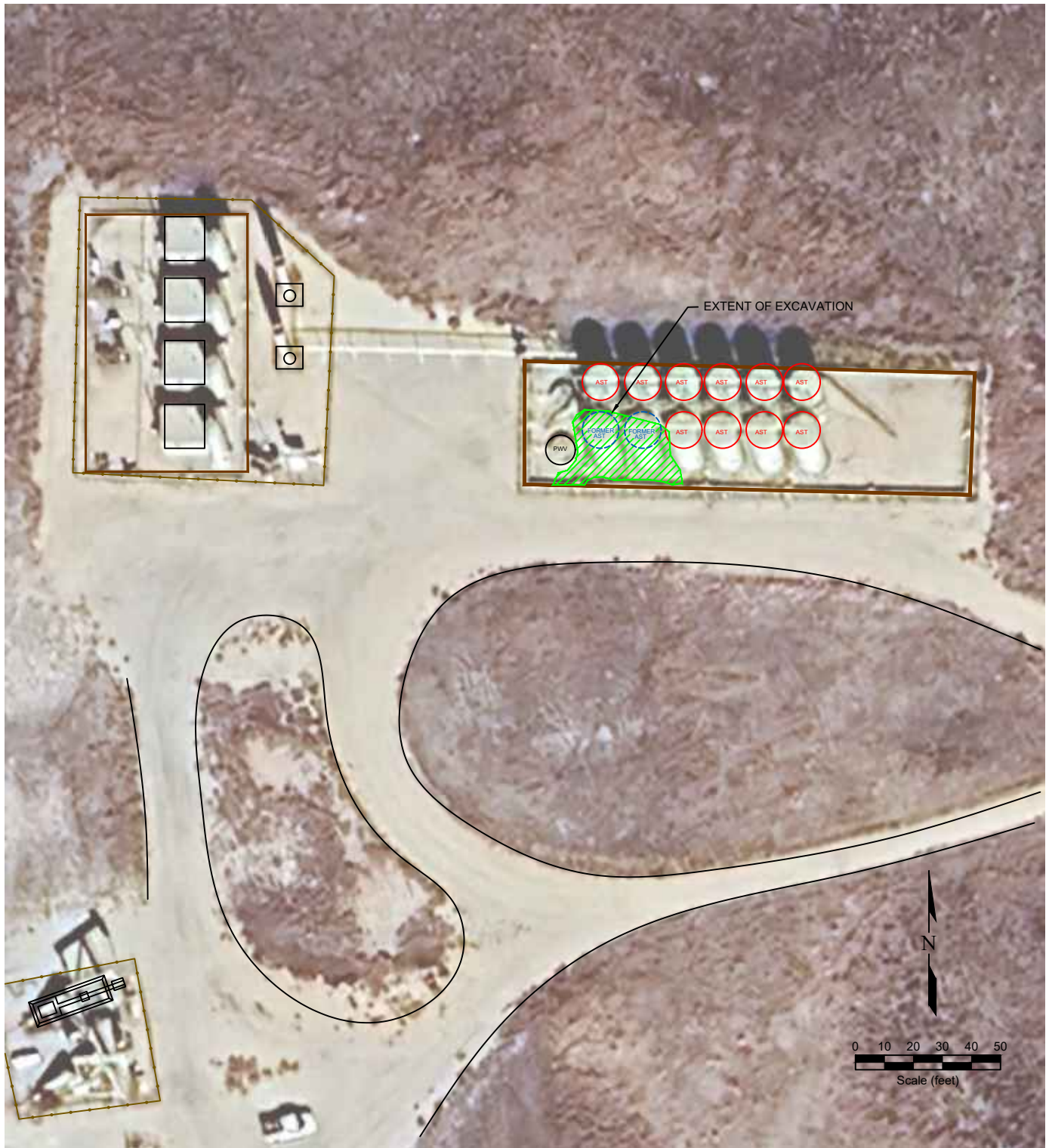
USGS 7.5 MINUTE SERIES (TOPOGRAPHIC)

Figure 1
SITE LOCATION MAP

PDC Energy, Inc. ~ Wells Ranch 34F-212
SWNW Sec. 34, T6N, R63W, 6th PM
Weld County, Colorado
40.447320°, -104.431945°

Project # C024-071	Facility # 428807	Initial Spill/Release Report Doc# 403783477
Date 10/14/2024	Filename 24071T	





LEGEND

	ABOVE GROUND STORAGE TANK		FORMER FACILITY		EXCAVATED AREA		EXTENT OF EXCAVATION
			FENCE LINE		CONTAINMENT BERM		CONTAINMENT WALL

Figure 2
SITE MAP

PDC Energy, Inc. ~ Wells Ranch 34F-212
 SWNW Sec. 34, T6N, R63W, 6th PM
 Weld County, Colorado
 40.447320, °, -104.431945°

Project No. C024-071	Facility # 428807	Initial Spill/Release Report Doc# 403783477
Date 10/14/2024	Filename 24071Q	



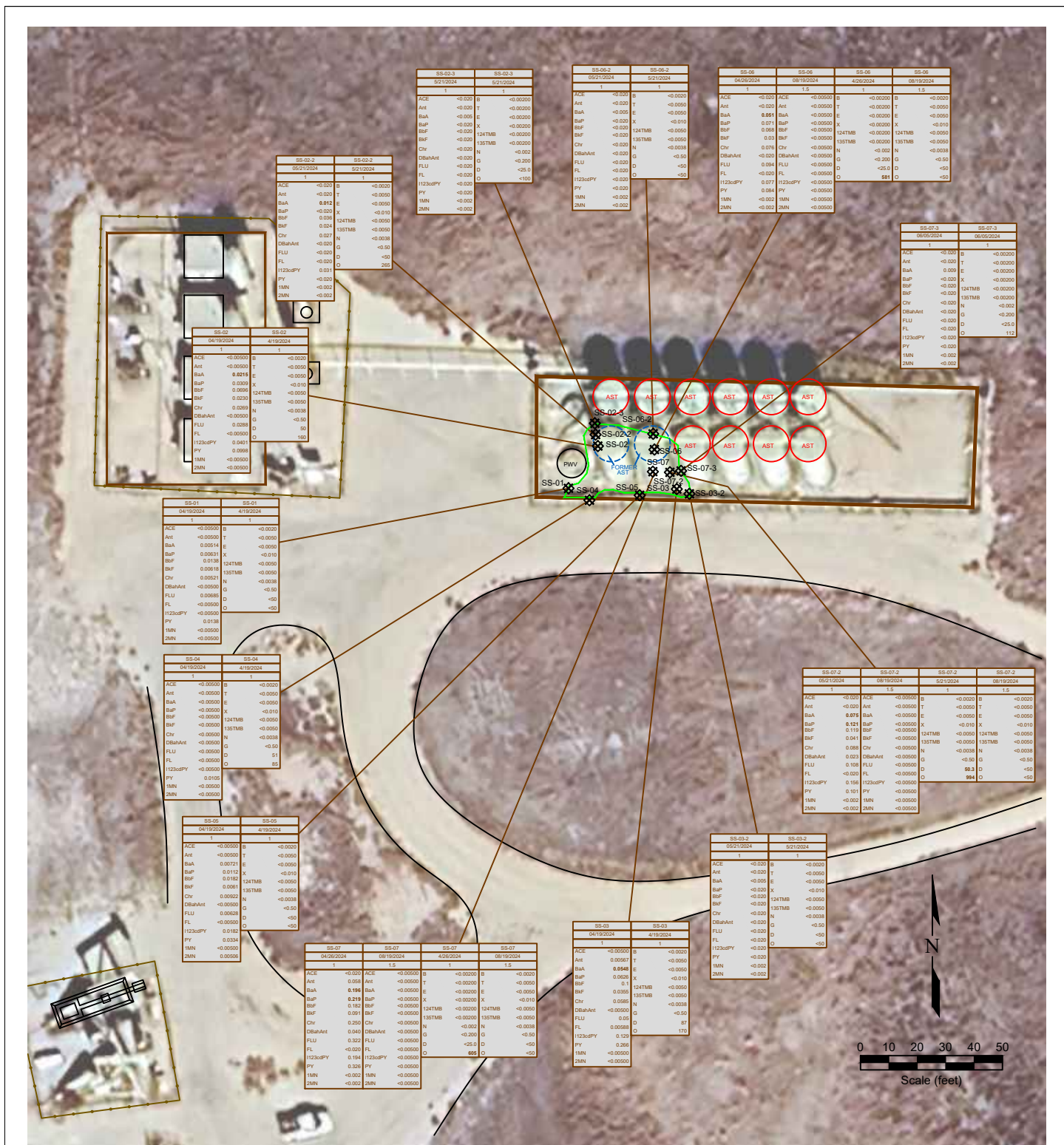


Figure 3
ORGANIC SOIL CHEMISTRY MAP

PDC Energy, Inc. ~ Wells Ranch 34F-212
SWNW Sec. 34, T6N, R63W, 6th PM
Weld County, Colorado
40.447320, -104.431945°

Project No.
C024-071

Facility #
428807

Initial Spill/Release
Report Doc#

403783477

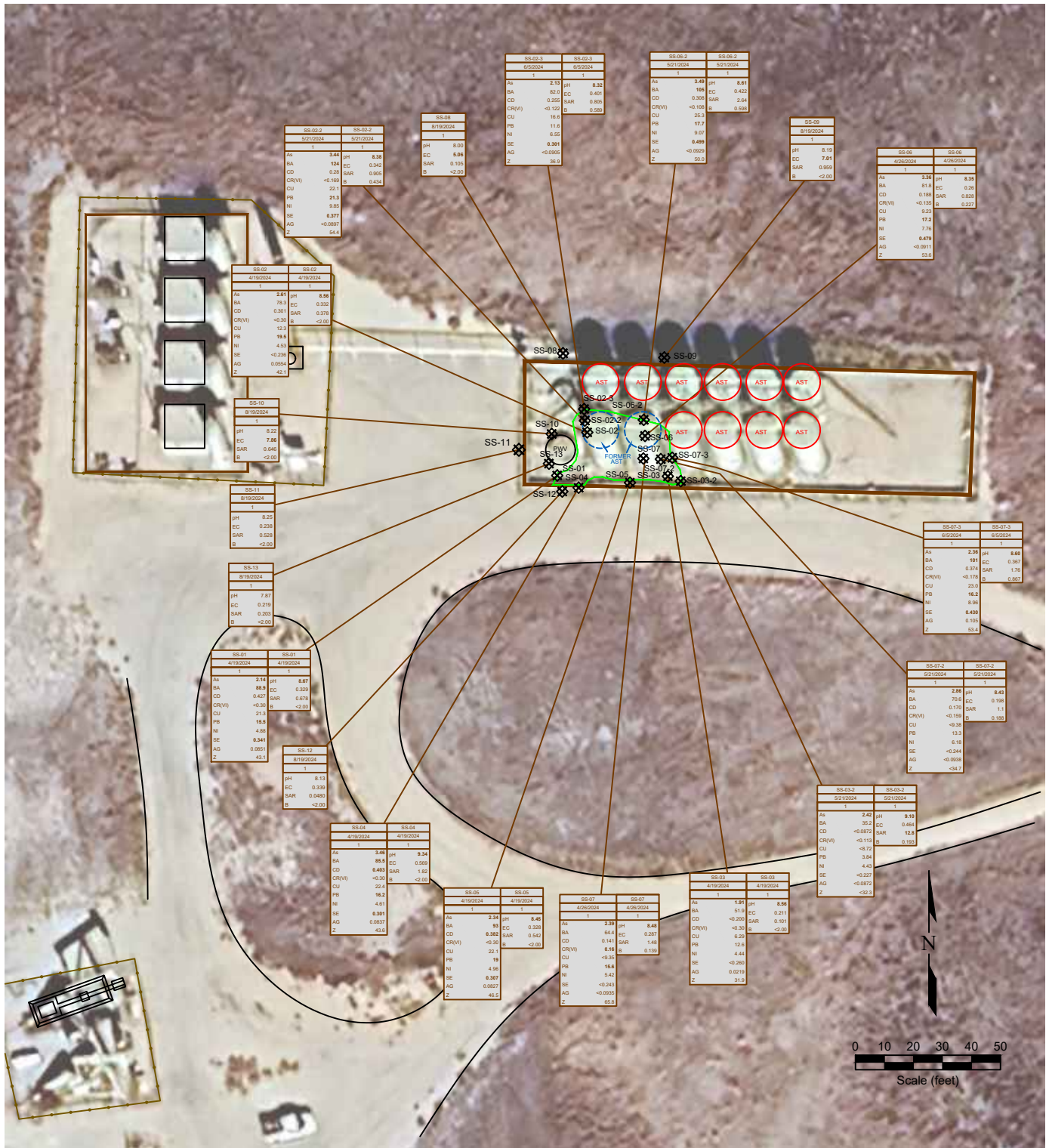
Date
10/14/2024

Filename
24071Q



SAMPLE ID	SAMPLE ID
DATE	DATE
DEPTH	DEPTH
ACE	<0.0000
Ant	<0.0000
BaA	<0.0000
BaP	<0.0000
BbF	<0.0000
BbP	<0.0000
Chr	<0.0000
DBaAnt	<0.0000
FLU	<0.0000
FL	<0.0000
123uPFY	<0.0000
123uPFY	<0.0000
1MN	<0.0000
2MN	<0.0000

SAMPLE ID	SAMPLE ID
DATE	DATE
DEPTH	DEPTH
B	<0.0000
T	<0.0000
E	<0.0000
X	<0.0000
124TMB	<0.0000
135TMB	<0.0000
N	<0.0000
G	<0.0000
D	<0.0000
S	<0.0000



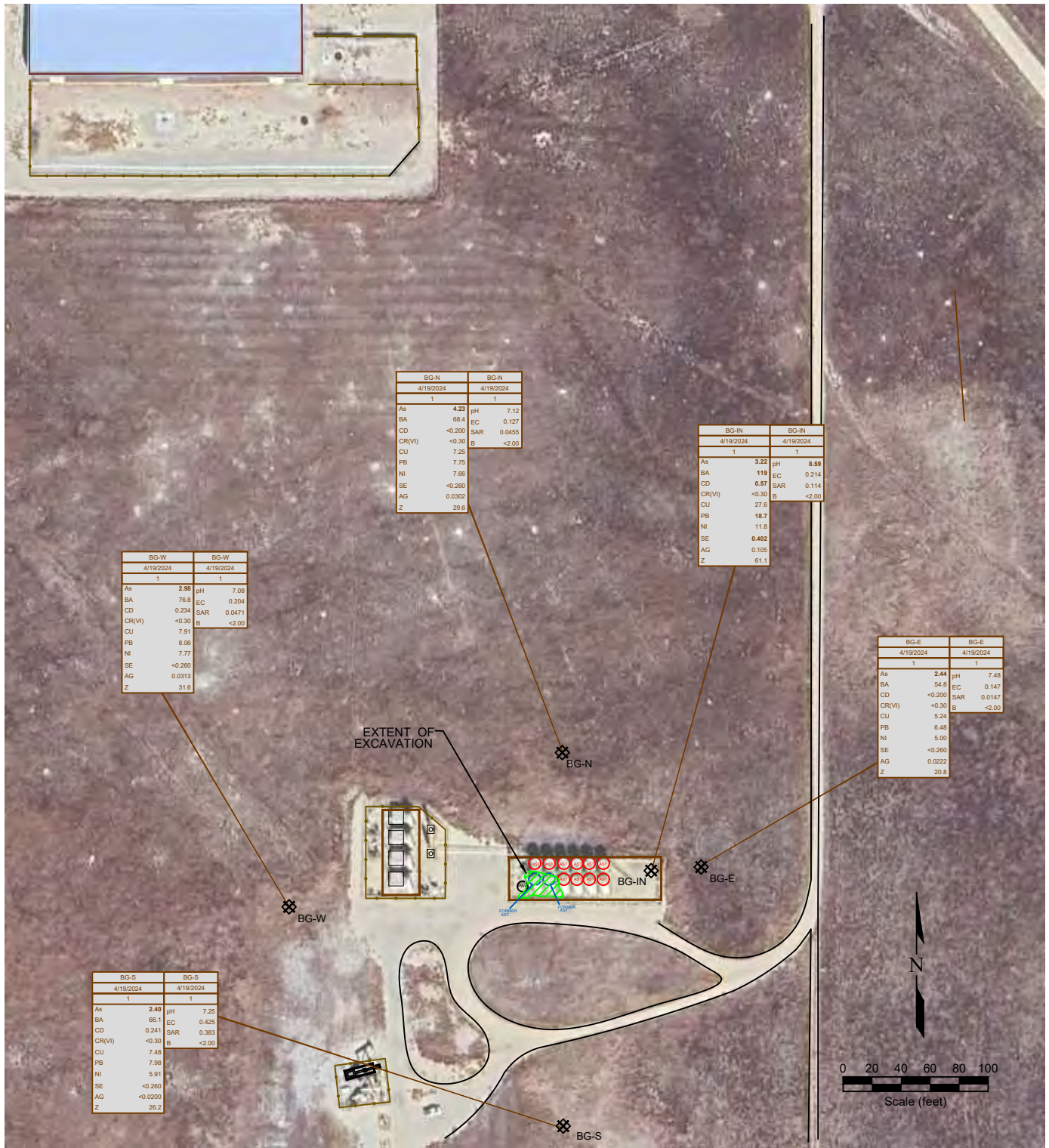


Figure 5
BACKGROUND SAMPLE SOIL CHEMISTRY MAP

PDC Energy, Inc. ~ Wells Ranch 34F-212
 SWNW Sec. 34, T6N, R63W, 6th PM
 Weld County, Colorado
 40.447320, -104.431945°

Project No.
C024-071

Facility #
428807

Initial Spill/Release
Report Doc#

403783477

Date
10/14/2024

Filename
24071Q

