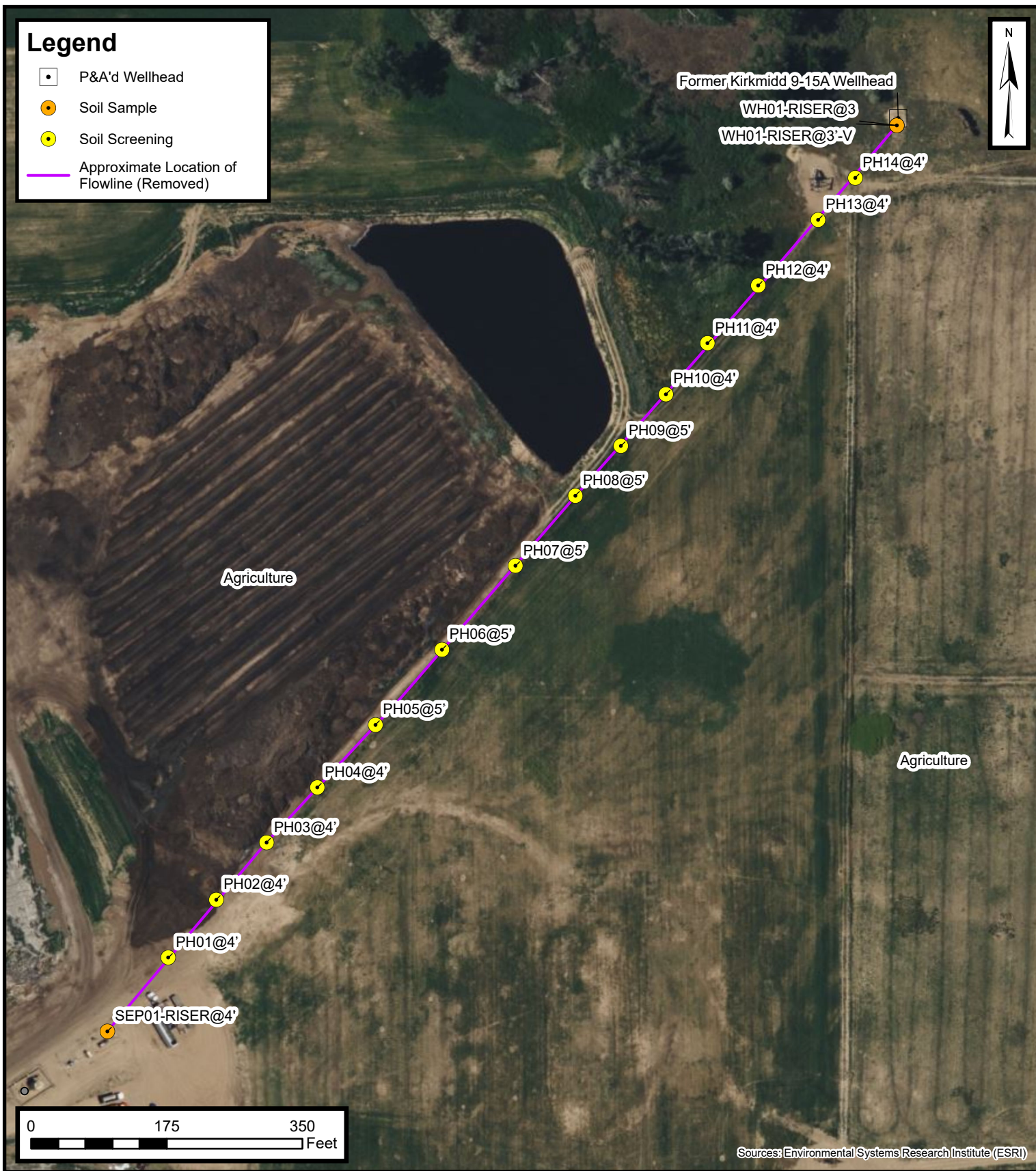


Default Folder: C:\Users\Mangan\OneDrive - ENSOLUM, LLC\Ensolium GIS\0 - Projects\Kerr-McGee Oil & Gas Onshore, LP\09A1417743 - Kirkmidd 9-15A Wellhead



Flowline Excavation Site Map

Kirkmidd 9-15A Flowline
Kerr-McGee Oil & Gas Onshore, LP
NESE SEC 15-T2N-R67W
Weld County, CO

Project Number: 09A1417743

FIGURE
2