

TABLE 1
FIELD DATA SUMMARY TABLE
NOBLE 100322
WELLS RANCH USX AE T6N-R62W-S29 L02, WELD COUNTY, COLORADO
REM # 31012

Sample ID	Sample Date	Depth	GPS Data		PDOP Value	VOC Concentration (ppm)
			Latitude	Longitude		
AST01-0.5FT	10/7/2024	0.5	40.452	-104.36	-	1
AST02-0.5FT	10/7/2024	0.5	40.4520314	-104.35540	-	0.6
AST03-0.5FT	10/7/2024	0.5	40.4519898	-104.35540	1.10	1
AST04-0.5FT	10/7/2024	0.5	40.4519498	-104.35541	-	0.4
AST05-0.5FT	10/7/2024	0.5	40.4519106	-104.35541	-	0.2
AST06-0.5FT	10/7/2024	0.5	40.4518741	-104.35548	-	0.3
AST07-0.5FT	10/7/2024	0.5	40.4518296	-104.35549	-	0.5
AST08-0.5FT	10/7/2024	0.5	40.4517902	-104.35549	-	0.1
Compressor-2FT	10/7/2024	2	40.4524253	-104.35531	-	0
FL02@5.0'	10/7/2024	5	40.4523883	-104.35544	-	0
FLARE01-0.5FT	10/7/2024	0.5	40.4524392	-104.35549	-	0
FLARE02-0.5FT	10/7/2024	0.5	40.4524414	-104.35545	0.90	0.5
FLARE03-0.5FT	10/7/2024	0.5	40.4524413	-104.35541	0.90	0.2
GL07-3FT	10/7/2024	3	40.4523921	-104.35553	1.00	0.3
MH01-0.5FT	10/7/2024	0.5	40.4523504	-104.35550	0.80	0
MH02-0.5FT	10/7/2024	0.5	40.4523606	-104.35550		0.2
PWV01 B-6FT	10/7/2024	6	40.4521596	-104.35546		409.2
PWV01 E-5FT	10/7/2024	5	40.4521603	-104.35543	1.00	398.8
PWV01 N-5FT	10/7/2024	5	40.4521840	-104.35546		8.1
PWV01 S-5FT	10/7/2024	5	40.4521442	-104.35546		687.3
PWV01 W-5FT	10/7/2024	5	40.4521600	-104.35548	1.00	297.7
PWV02 B-6FT	10/7/2024	5	40.4521621	-104.35539	1.00	46
PWV02 E-5FT	10/7/2024	5	40.4521640	-104.35537	-	15.5
PWV02 N-5FT	10/7/2024	5	40.4521829	-104.35539	1.00	7.7
PWV02 S-5FT	10/7/2024	5	40.4521349	-104.35539	1.00	0.6

Sample ID	Sample Date	Depth	GPS Data		PDOP Value	VOC Concentration (ppm)
			Latitude	Longitude		
PWV02 W-5FT	10/7/2024	5	40.4521605	-104.35541	1.10	0.3
SEP01 DL01-0.5FT	10/7/2024	0.5	40.4523353	-104.35534	1.00	1.1
SEP01 DL02-0.5FT	10/7/2024	0.5	40.4523812	-104.35533	0.90	0.6
SEP02 DL01-3FT	10/7/2024	3	40.4523407	-104.35539	0.90	0.8
SEP02 DL02-0.5FT	10/7/2024	0.5	40.4523814	-104.35538	1.00	2.7
SEP03 DL01-3FT	10/7/2024	3	40.4523426	-104.35543	0.90	18.6
SEP03 FL-3FT	10/7/2024	3	40.4523880	-104.35544	-	0
SEP04 DL01-3FT	10/7/2024	3	40.4523412	-104.35547	0.90	0.4
SEP04 FL08-3FT	10/7/2024	3	40.4523837	-104.35549	-	0.2

1. Global Positioning System (GPS) data is provided in decimal degrees using North American Datum (NAD) 83 UTMZone 13 North.

2. Volatile organic compound (VOC) concentrations are measured in the field using a photoionization detector (PID).

PDOP = Position Dilution of Precision

ppm = Parts per million

in. = Inches

ft. = Feet

bgs = Below ground surface

 = Source material characterization sample, excavated and transported off site for disposal.

 = Material excavated and transported off site for disposal.

TABLE 2
SUMMARY OF VOLATILE ORGANIC SOIL CHEMISTRY DATA
NOBLE 100322
WELLS RANCH USX AE T6N-R62W-S29 L02, WELD COUNTY, COLORADO
REM # 31012

Sample ID	Sample Date	Depth (ft)	Benzene (mg/kg)	Toluene (mg/kg)	Ethyl-Benzene (mg/kg)	Xylenes (mg/kg)	1,2,4-Trimethyl-Benzene (mg/kg)	1,3,5-Trimethyl-Benzene (mg/kg)	Naphthalene (mg/kg)	TPH (mg/kg)	TPH GRO (mg/kg)	TPH DRO (mg/kg)	TPH ORO (mg/kg)
ECMC Table 915-1 Limits (Residential SSL)			1.2	490	5.8	58	30	27	2	500	500**		
ECMC Table 915-1 Limits (Protection of Groundwater SSL)			0.0026	0.69	0.78	9.9	0.0081	0.0087	0.0038	500	500**		
PWV01B - 6FT	10/09/2024	6	<0.0020	<0.0050	0.023	0.03	0.073	0.023	0.042	<500	4.9	<50	<50
PWV01E - 5FT	10/09/2024	5	<0.0020	<0.0050	0.055	0.13	0.15	0.04	0.056	<500	3.8	<50	<50
PWV01S - 5FT	10/09/2024	5	<0.0020	<0.0050	1.3	1.7	1.8	0.31	0.36	<500	240	190	<50

1. Bold values exceed the ECMC Table 915-1 limit(s)

2. Red & blue highlighted soil analytical values indicate an exceedance of the referenced soil screening level (SSL)

3. * Indicates laboratory minimum detection limit in excess of SSL

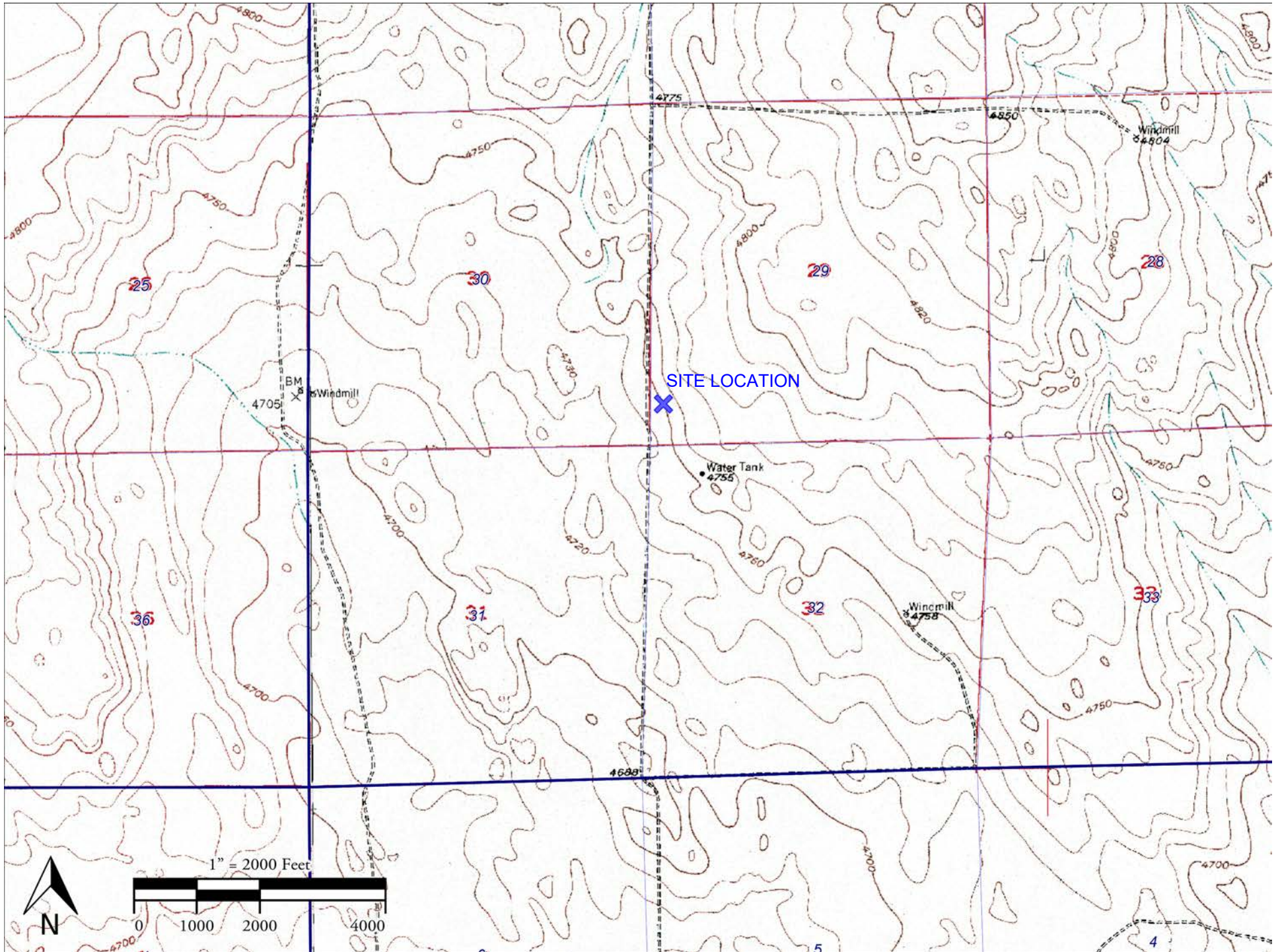
4. ** Summation of GRO+DRO+ORO must be less than 500 mg/kg

NA - Not analyzed

= Source material characterization sample, excavated and transported off site for disposal.

= Material excavated and transported off site for disposal.




Noble - WELLS RANCH USX AE T6N-R62W-S29 L02

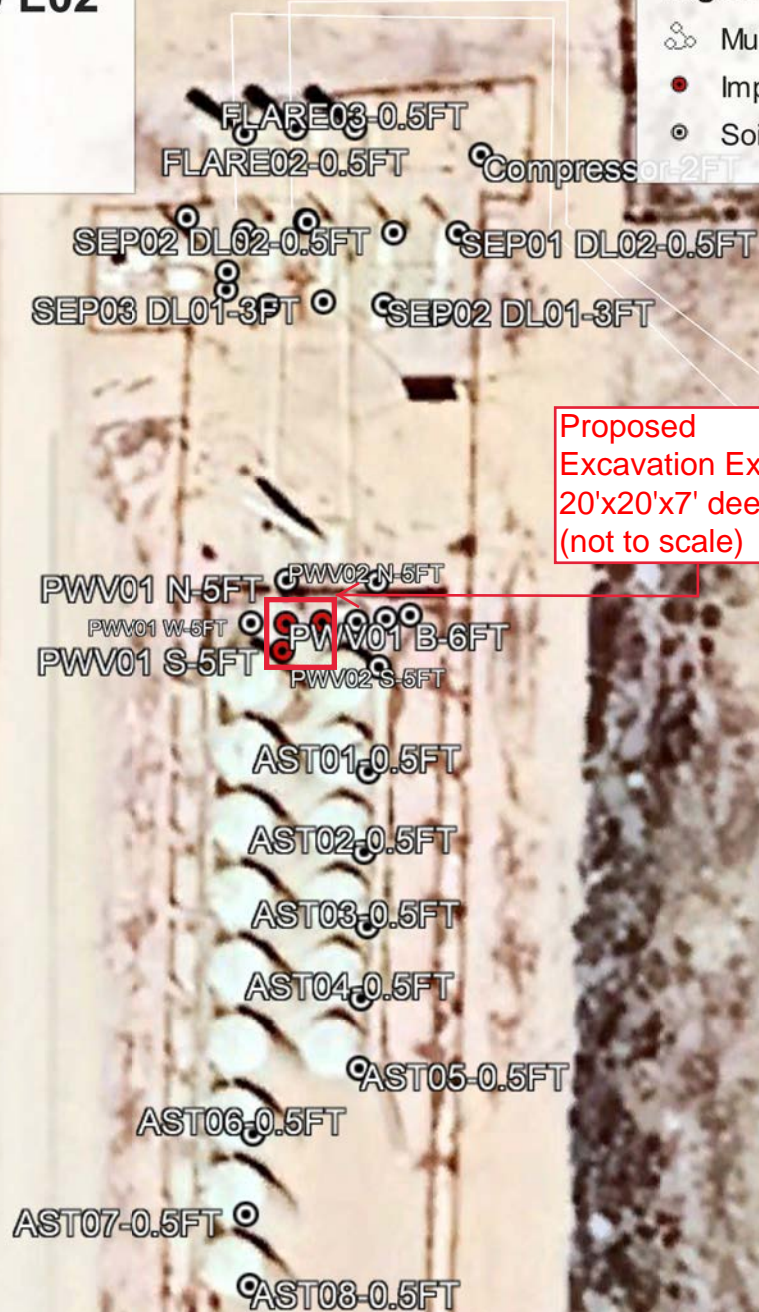


WELLS RANCH USX AE T6N-R62W-S29 L02

SWSW Sec: 29 Twp: 6N Range: 62W Meridian: 6
40.4521596, -104.3554587
Facility ID: 428526, Remediation Project #: 31012

Legend

-  Multiphase Flowlines
-  Impacted Soil Sample Locations
-  Soil Sample Locations



Proposed
Excavation Extent:
20'x20'x7' deep
(not to scale)



Photo Log



Description:

#31-PWV01 E-5Ft -Visual staining, slight odor

Photo Log



Description:

#32-PWV01 S-5Ft - Visual staining, strong odor

Photo Log



Description:

#33-PWV01 W-5Ft -Visual staining, slight odor

Photo Log



Description:

#34-PWV01 B-6Ft -Visual staining, slight odor