

**PO Box 329**

**Ft. Lupton, CO 80621**  
**(303) 654-9202**

*"Here Safety Meets Quality at the Axis of Efficiency"*

Date of Service	Job Type	Customer	Consultant	Well Name		Last Tckt	Ticket #
8/8/2024	Surface	OXY	Shane Hart	Berglund Meyers 42-19		Yes	3763
State	County	API		Rig		Operator	
Colorado	Weld	05-123-40000		Coil tubing		Roberto Acevedo	
Well Information						Water	
	Work String	Prod CSG	Surface	OH (I.D.)	Annular	Temp	68 °F
OD & Weight	2 3/8" 4.7#		8 5/8" 24#			PH	7
bbl/ft Factor	0.00387	0	0.0636	0.0000		Chloride	1
Length in ft	11,000		130			Well Description	Depth in Ft
Capacity in bbls	42.57	0.00	8.27	0.00	0.00	Perfs	130'
OD & Weight						TOC	Surface
bbl/ft Factor	0	0	0	0.0000			
Length in ft							
Capacity in bbls	0.00	0.00	0.00	0.00	0.00		
OD & Weight							
bbl/ft Factor	0	0	0	0.0000			
Length in ft							
Capacity in bbls	0.00	0.00	0.00	0.00	0.00		
Buoyancy	0.87	Buoyancy	0.76	Buoyancy	0.76		
Lift Pressure 10153	PRV 7000	Lift Pressure	PRV	Lift Pressure	PRV		
Drivers, Crew and Equipment Allocation							
Driver and Heavy Duty Equipment				Crew and Light Duty Equipment			Misc. Tools or Equipment
Driver	Tractor	Trailer	Mileage	Crew	Equipment	Mileage	Required or Requested
Isaiah Juanicorena	3379	P 13780	50	Roberto Acevedo	7486	50	
Victor Conaway	8109	B 7016	50				
Total Heavy Duty Mileage			100	Total Light Duty Mileage		50	
Surface AGM		50	Blend	0	Blend	0	Job Specific Remarks
Class G 94lb/sk	4,700.0	Class G 94lb/sk	-	Class G 94lb/sk	-		
CaCL2	94.0	CaCL2	-	CaCL2	-		
Gypsum	188.0	Gypsum	-	Gypsum	-		
RFL-1 (latex)	18.8	RFL-1 (latex)	-	RFL-1 (latex)	-		
Defoamer	14.1	Defoamer	-	Defoamer	-		
RFL-70X(Latex)	-	RFL-70X(Latex)	-	RFL-70X(Latex)	-		
RFL-9(Fluid Loss)	-	RFL-9(Fluid Loss)	-	RFL-9(Fluid Loss)	-		
RCD-3(Dispersant)	-	RCD-3(Dispersant)	-	RCD-3(Dispersant)	-		
RCR-201(Retarder)	-	RCR-201(Retarder)	-	RCR-201(Retarder)	-		
PreMag	-	PreMag	-	PreMag	-		
THIX-C2	-	THIX-C2	-	THIX-C2	-		
Silica Flour	-	Silica Flour	-	Silica Flour	-		
Desc	Qty	Rate	Total	Desc	Qty	Rate	Total
Class G 94lb/sk	50						
CaCL2	94.00						
Gypsum	188.0						
RFL-1 (latex)	19.0						
Defoamer	15.0						
Alpha	1.00						
Pump & Bulk/Hour	2.00						
Data Recording	1.00						
Bulk Material Blending	1.00						
Bulk Material Delivery	1.00						

Print

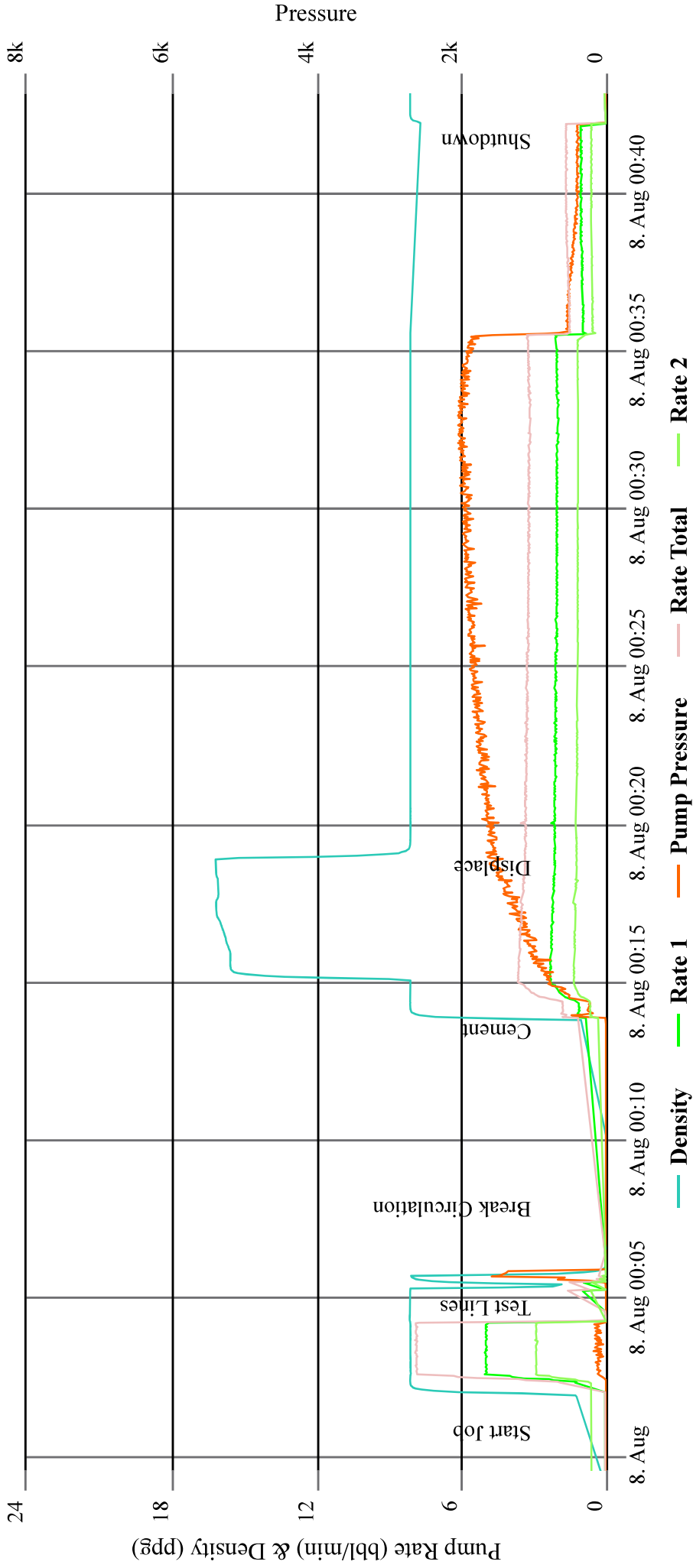
Sign

Date

[illegible]

# BERGLUND MEYERS 42-19

## CEMENTING - DOUBLE PUMPER



**PO Box 329**

**Ft. Lupton, CO 80621**  
**(303) 654-9202**

*"Here Safety Meets Quality at the Axis of Efficiency"*

Date of Service	Job Type	Customer	Consultant	Well Name	Last Tckt	Ticket #	
8/14/2024	Balance Plug	OXY	Jeremy Duty	Berglund Myers 42-19	No	3821	
State	County	API	Rig	Operator			
Colorado	Weld	05-123-14249	Ensign 122	Jonathon Rhamy			
Well Information				Water			
	Work String	Prod CSG	Surface	OH (I.D.)	Annular	Temp	75 °F
OD & Weight	DP 4 1/2" 16.6#			7.875		PH	7
bbl/ft Factor	0.01422	0	0	0.0602		Chloride	1ppm
Length in ft	6513			1278		Well Description	Depth in Ft
Capacity in bbls	92.61	0.00	0.00	76.99	0.00	TOC	5,823
OD & Weight	DP 4 1/2" 16.6#			7.875		EOP	6,513
bbl/ft Factor	0.01422	0	0	0.0602			
Length in ft	4323			996		TOC	3,779
Capacity in bbls	61.47	0.00	0.00	60.00	0.00	EOP	4,323
OD & Weight	DP 4 1/2" 16.6#			7.875			
bbl/ft Factor	0.01422	0	0	0.0602		TOC	2,055
Length in ft	2495			1012		EOT	2,495
Capacity in bbls	35.48	0.00	0.00	60.97	0.00		
Buoyancy	0.76	Buoyancy	0.76	Buoyancy	0.76		
Lift Pressure	PRV	Lift Pressure	PRV	Lift Pressure	PRV		
5166	3500	3429	2500	1979	1500		

## Drivers, Crew and Equipment Allocation

Driver and Heavy Duty Equipment				Crew and Light Duty Equipment			Misc. Tools or Equipment
Driver	Tractor	Trailer	Mileage	Crew	Equipment	Mileage	Required or Requested
Alexander Pomales	90530			Jonathon Rhamy	7490		
Brian Quesada		B 2883					
		B 2884					
		B 2250					
Total Heavy Duty Mileage			0	Total Light Duty Mileage		0	

Niobrara Blend		285	Sussex Blend		285	Lower AGM		285	Job Specific Remarks	
Class G 94lb/sk		26,790.0	Class G 94lb/sk		26,790	Class G 94lb/sk		26,790		ticket #1
CaCL2		-	CaCL2		-	CaCL2		268		
Gypsum		-	Gypsum		536	Gypsum		1,072		
RFL-1 (latex)		-	RFL-1 (latex)		-	RFL-1 (latex)		107		
Defoamer		80.4	Defoamer		80	Defoamer		80		
RFL-70X(Latex)		107.2	RFL-70X(Latex)		107	RFL-70X(Latex)		-		
RFL-9(Fluid Loss)		67.0	RFL-9(Fluid Loss)		67	RFL-9(Fluid Loss)		-		
RCD-3(Dispersant)		40.2	RCD-3(Dispersant)		80	RCD-3(Dispersant)		-		
RCR-201(Retarder)		26.8	RCR-201(Retarder)		-	RCR-201(Retarder)		-		
PreMag		-	PreMag		-	PreMag		-		
THIX-C2		-	THIX-C2		-	THIX-C2		-		
Silica Flour		9,376.5	Silica Flour		-	Silica Flour		-		

Desc	Qty	Rate	Total	Desc	Qty	Rate	Total
Class G 94lb/sk	285						
Defoamer	81.00						
RFL-70X(Latex)	108.0						
RFL-9(Fluid Loss)	67.0						
RCD-3(Dispersant)	41.0						
RCR-201(Retarder)	27.0						
Silica Flour	9377.0						
Sugar	150.00						
Alpha	3.00						
Pump & Bulk/Hour	2.00						
Data Recording	1.00						
Discounted Hourly Rate	13.00						
Add'l Bulk	2.00						

Print

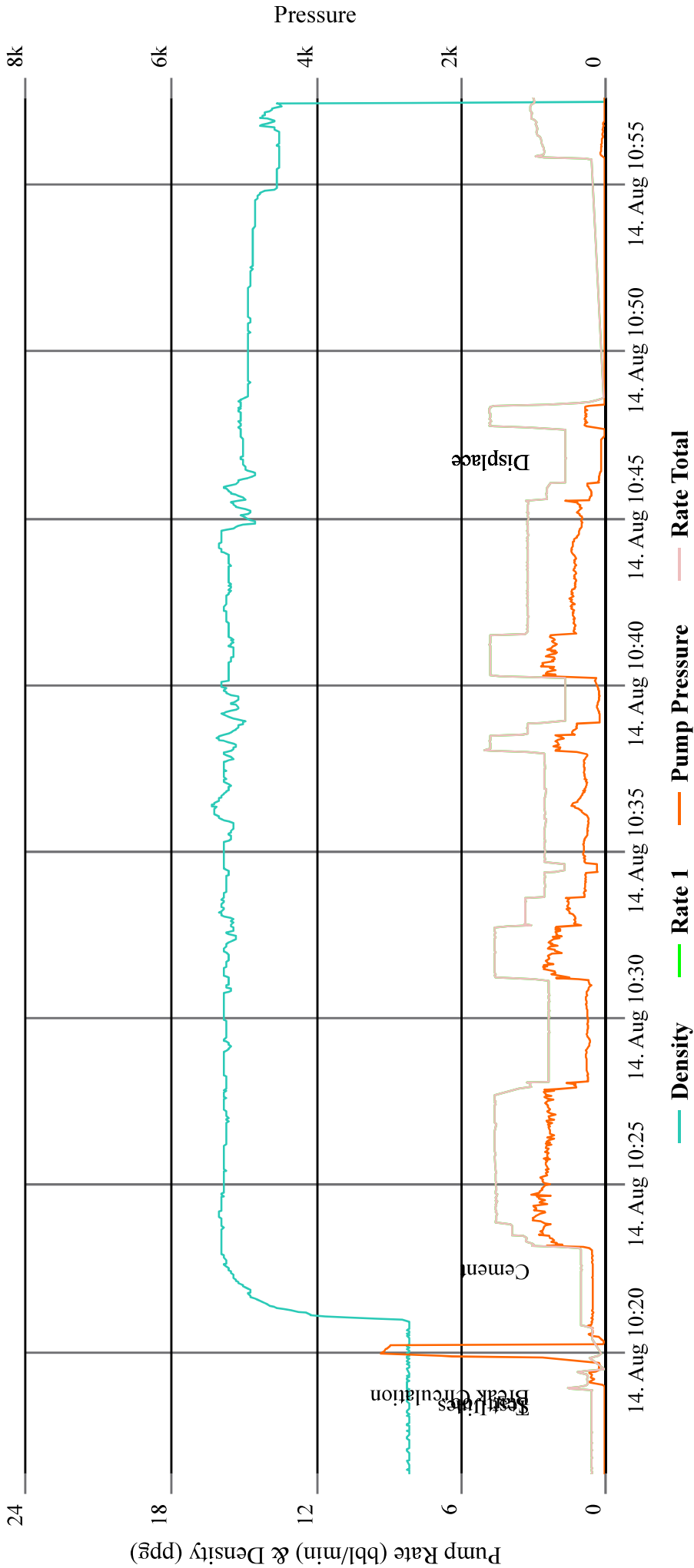
2090

Dyle



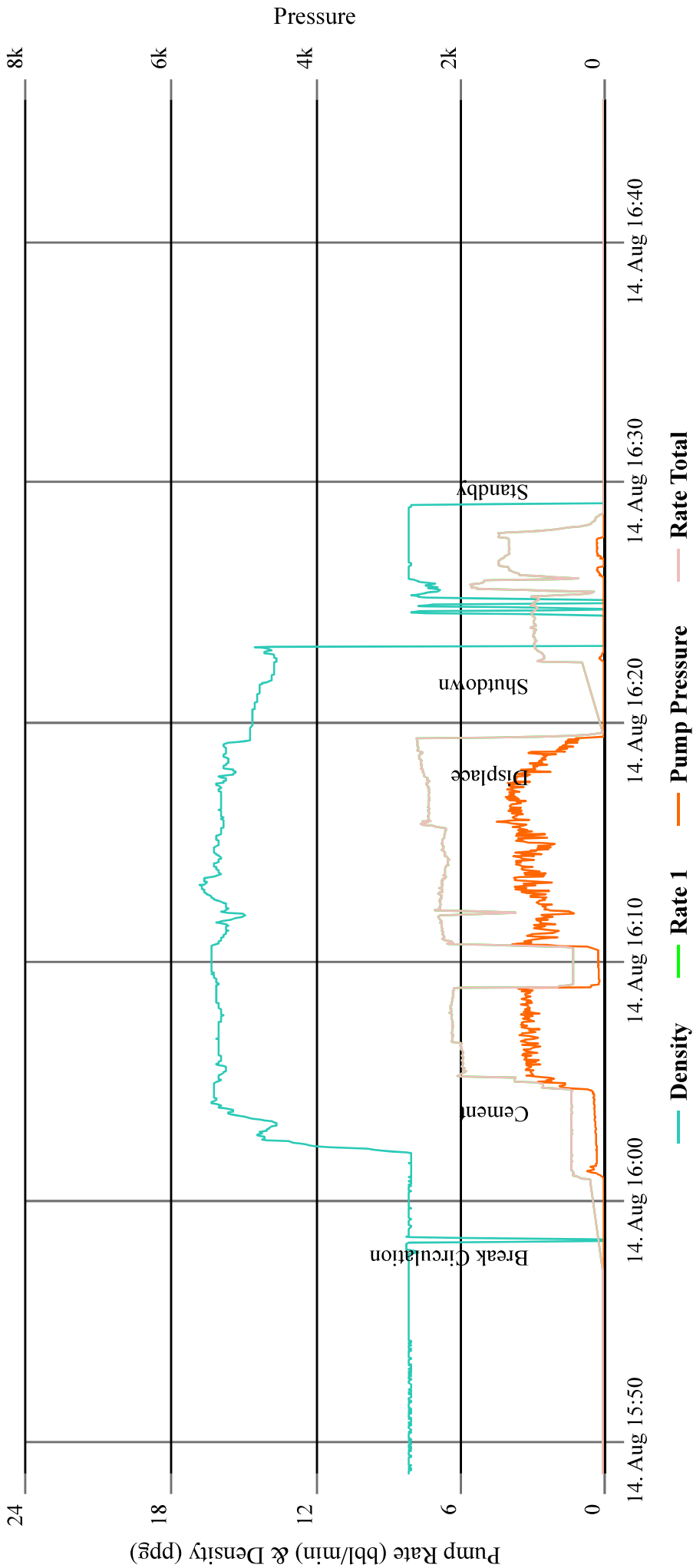
# BERGLUND MYERS 42-19 NIOBRARA

## CEMENTING



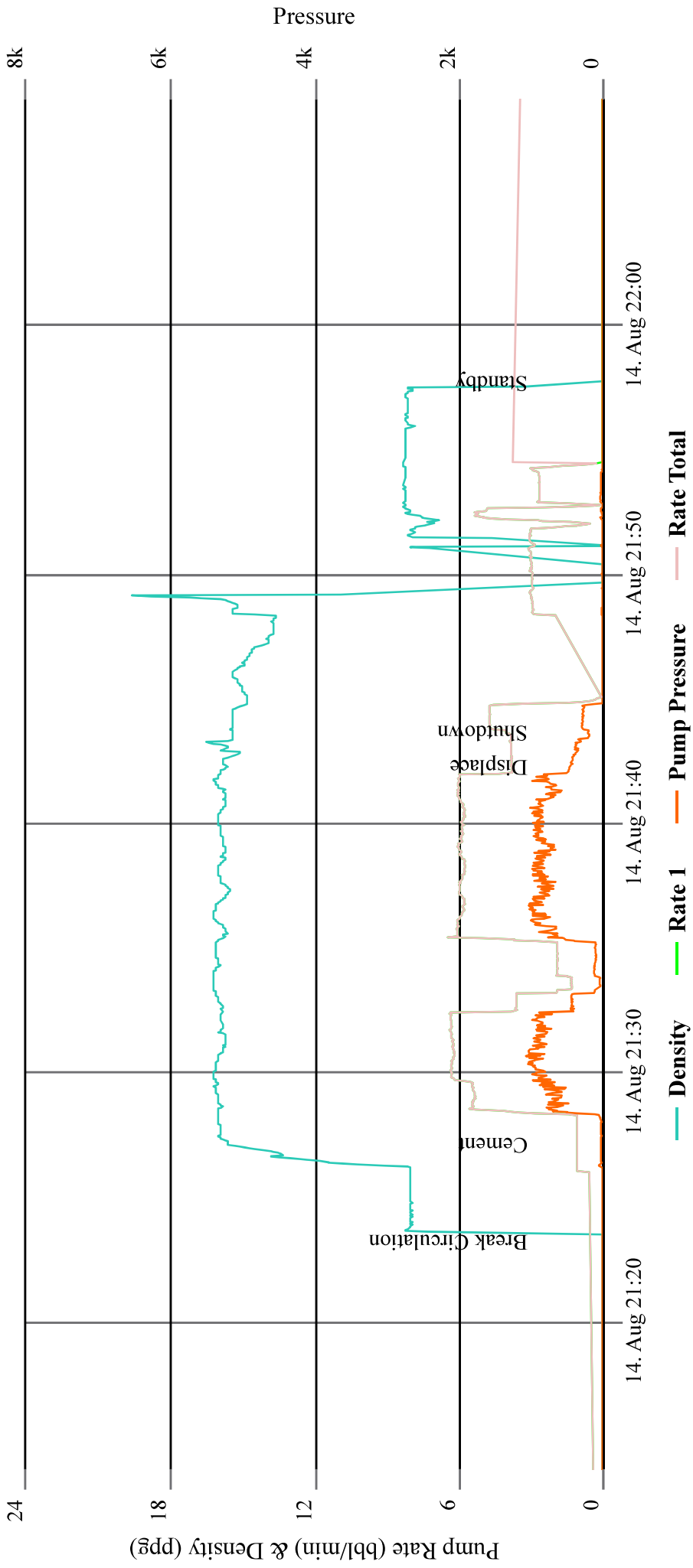
# BERGLUND MYERS 42-19 SUSSEX

## CEMENTING



# BERGLUND MYERS 42-19 L-AGM

CEMENTING

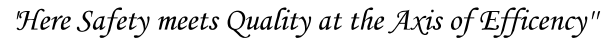


**PO Box 329**

**Ft. Lupton, CO 80621**  
**(303) 654-9202**

*"Here Safety Meets Quality at the Axis of Efficiency"*

Date of Service		Job Type	Customer	Consultant	Well Name		Last Tckt	Ticket #		
8/15/2024		Surface Plug	OXY	Isaac Rulla	Berglund Meyers 42-19		No	3828		
State	County	API			Rig		Operator			
Colorado	Weld	05-123-14249			Ensign 122		Jonathon Rhamy			
Well Information						Water				
	Work String	Prod CSG	Surface	OH (I.D.)	Annular	Temp	70 °F			
OD & Weight	DP 4 1/2" 16.6#			7.875		PH	7			
bbl/ft Factor	0.01422	0	0	0.0602		Chloride	1ppm			
Length in ft	1782			996		Well Description		Depth in Ft		
Capacity in bbls	25.34	0.00	0.00	60.00	0.00	TOC	983			
OD & Weight	DP 4 1/2" 16.6#			7.875		EOP	1,782			
bbl/ft Factor	0.01422	0	0	0.0602						
Length in ft	846			665		TOC	80			
8/15/2024	12.03	0.00	0.00	40.06	0.00	EOP	846			
OD & Weight	DP 4 1/2" 16.6#		8 5/8" 24#	7.875						
bbl/ft Factor	0.01422	0	0.0636	0.0602		TOC	80			
Length in ft	178		172	5		EOP	178			
Capacity in bbls	2.53	0.00	10.94	0.30	0.00					
Buoyancy	0.76	Buoyancy	0.76	Buoyancy	0.76					
Lift Pressure	PRV	Lift Pressure	PRV	Lift Pressure	PRV					
1414	1000	671	500	141	0					
Drivers, Crew and Equipment Allocation										
Driver and Heavy Duty Equipment				Crew and Light Duty Equipment			Misc. Tools or Equipment			
Driver	Tractor	Trailer	Mileage	Crew	Equipment	Mileage	Required or Requested			
Alexander Pomaes	90530			Jonathon Rhamy	7490					
Bret Wade		B 2883								
		B 7016								
Total Heavy Duty Mileage			0	Total Light Duty Mileage			0			
Upper AGM		285	Surface AGM		410	Surface AGM		95		
Class G 94lb/sk	26,790.0	Class G 94lb/sk	38,540	Class G 94lb/sk	8,930	ticket 2				
CaCL2	401.9	CaCL2	771	CaCL2	179					
Gypsum	1,071.6	Gypsum	1,542	Gypsum	357					
RFL-1 (latex)	107.2	RFL-1 (latex)	154	RFL-1 (latex)	36					
Defoamer	80.4	Defoamer	116	Defoamer	27					
RFL-70X(Latex)	-	RFL-70X(Latex)	-	RFL-70X(Latex)	-					
RFL-9(Fluid Loss)	-	RFL-9(Fluid Loss)	-	RFL-9(Fluid Loss)	-					
RCD-3(Dispersant)	-	RCD-3(Dispersant)	-	RCD-3(Dispersant)	-					
RCR-201(Retarder)	-	RCR-201(Retarder)	-	RCR-201(Retarder)	-					
PreMag	-	PreMag	-	PreMag	-					
THIX-C2	-	THIX-C2	-	THIX-C2	-					
Silica Flour	-	Silica Flour	-	Silica Flour	-					
Desc	Qty	Rate	Total	Desc	Qty				Rate	Total
Class G 94lb/sk	285									
CaCL2	402.00									
Gypsum	1072.0									
RFL-1 (latex)	108.0									
Defoamer	81.0									
Alpha	3.00									
Sugar	300.00									
Pump & Bulk/Hour	2.00									
Discounted Hourly Rate	10.00									
Data Recording	1.00									
Add'l Bulk	1.00									
Print		Sign		Date						



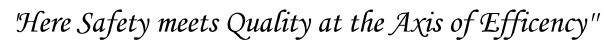
<i>Print</i>	<i>Sign</i>	<i>Date</i>	Date of service	8/15/2024
			Ticket total	\$36,344.00

**PO Box 329**

**Ft. Lupton, CO 80621**  
**(303) 654-9202**

*"Here Safety Meets Quality at the Axis of Efficiency"*

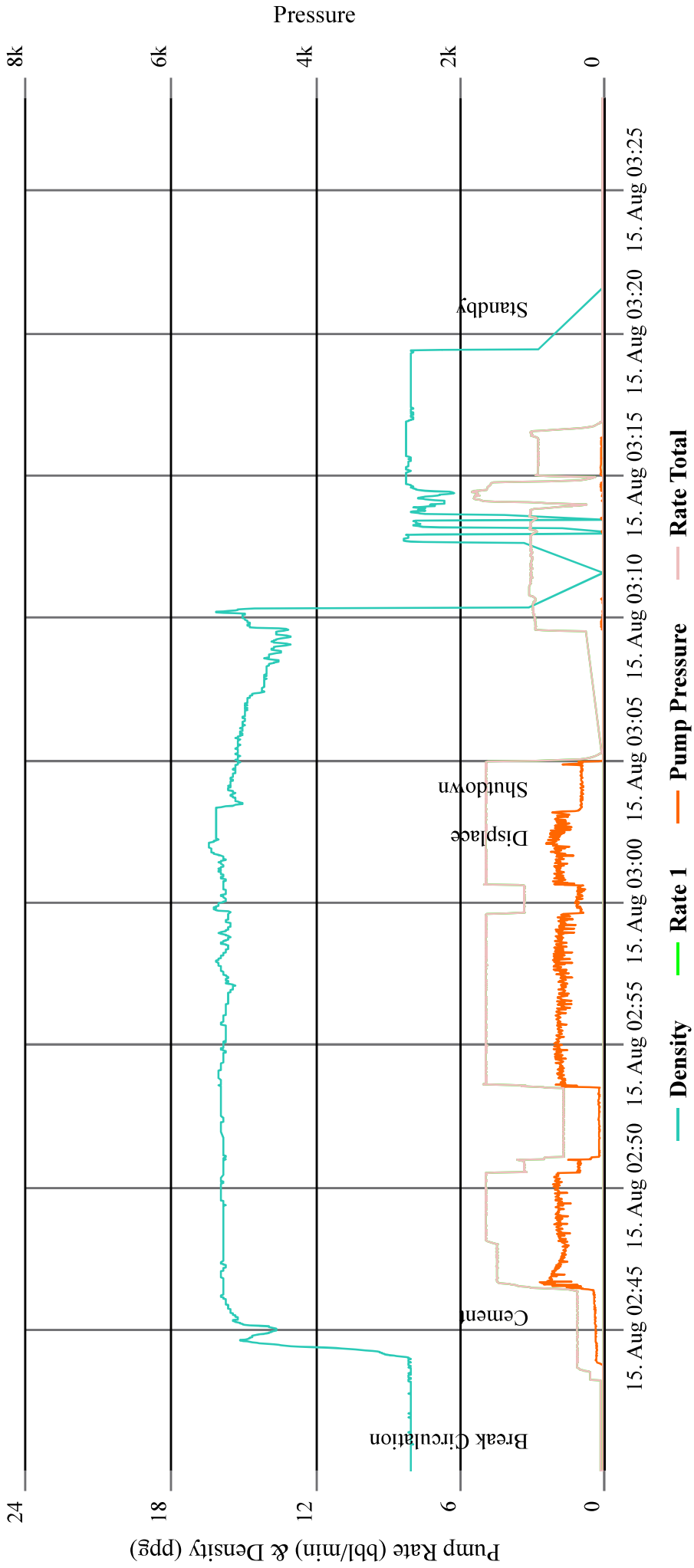
[illegible]



<i>Print</i>	<i>Sign</i>	<i>Date</i>	Date of service	8/15/2024
			Ticket total	\$2,013.25

# BERGLUND MYERS 42-19 U-AGM

## CEMENTING



# BERGLUND MYERS 42-19 S-AGM

## CEMENTING

