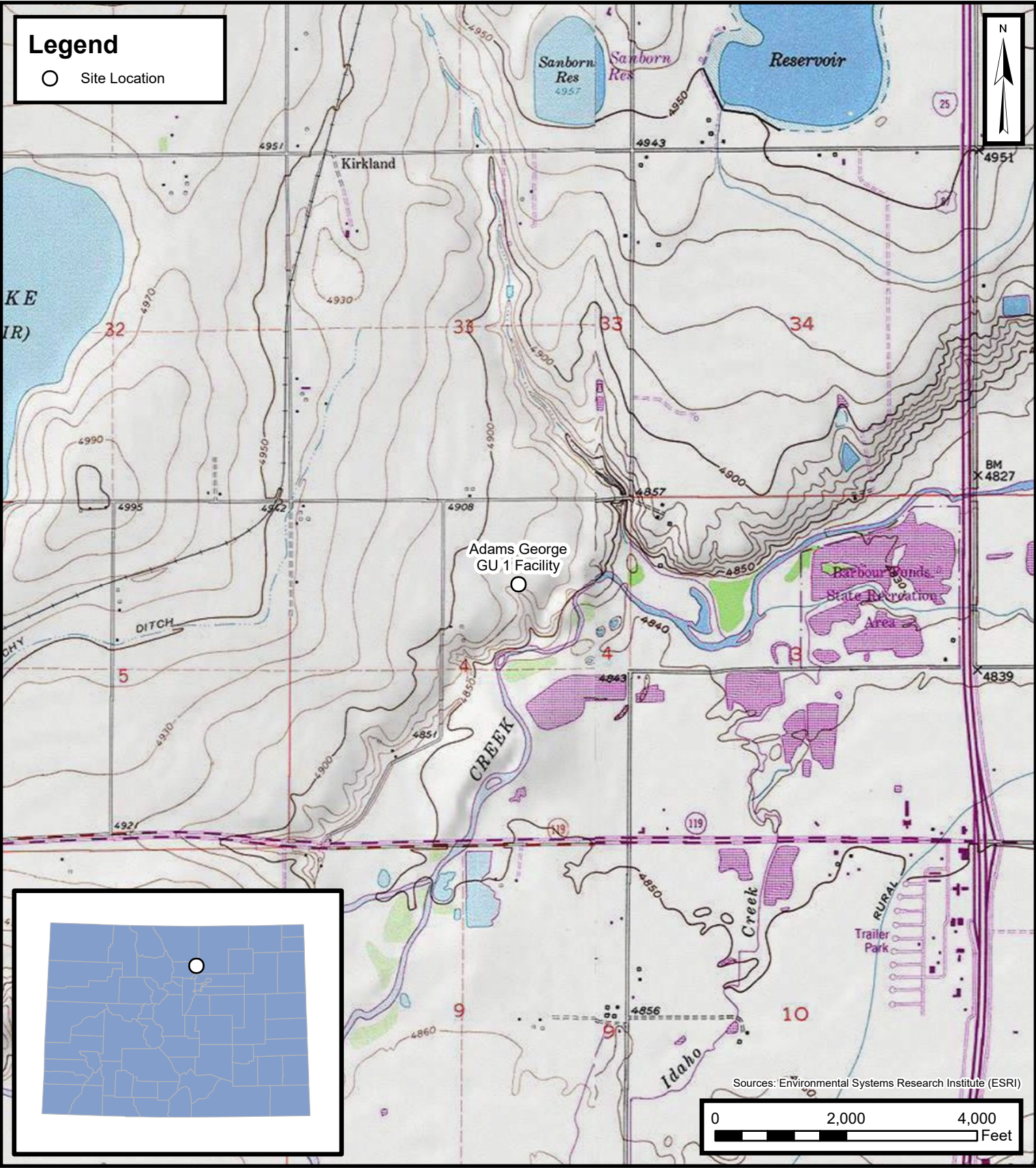
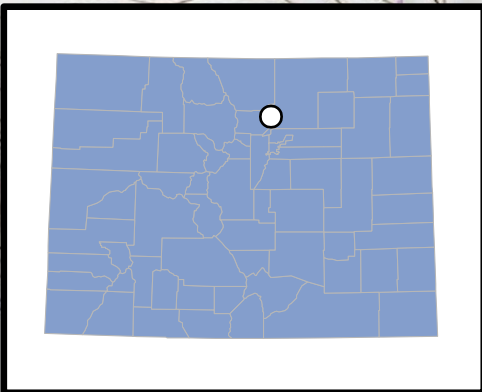


Legend

○ Site Location



Default Folder: C:\Users\Margan\OneDrive - ENSOLUM, LLC\Ensolium GIS\0 - Projects\Kerr-McGee Oil & Gas Onshore, LP\09A1417862 - Adams George GU 1 Facility



Sources: Environmental Systems Research Institute (ESRI)
0 2,000 4,000 Feet



Site Location Map
Adams George GU 1 Facility
Kerr-McGee Oil & Gas Onshore, LP
SWNE SEC 4-T2N-R68W
Weld County, CO
Project Number: 09A1417862

FIGURE
1