



RADIAL SECTOR CEMENT BOND LOG/ GAMMA RAY/CCL

Company	CEARUS OIL AND GAS	State	COLORADO
Well	SVG FEDERAL 7-41B	Location:	API #: 0504519130
Field	PARACHUTE	County	GARFIELD
SEC	7	TWP	8S
RGE	95W	Elevation	6341.7'
Log Measured From	GROUND LEVEL	D.I.:	6366.7'
Drilling Measured From	GROUND LEVEL	G.L.:	6341.7'
Date	JULY 10, 2024	Run Number	MAIN PASS
Depth Diller	N/A	Present Depth Diller	N/A
Depth Logger	138'	Bottom Logged Interval	138'
Top Log Interval	SURFACE	Fluid Level	SURFACE
Fluid Level	FRESH WATER	Type Fluid	N/A
Max. Recorded Temp.	N/A	Estimated Cement Top	218
Equipment Number	218	Location	GRAND JUNCTION
Recorded By	H.SCHMALZ	Recorded By	D.PACE
Witnessed By	E.KOENIG	Witnessed By	
Boothole Record	From	To	Size
Run Number	Bit	From	To
			Weight
			From
			To

<<< Fold Here >>>

All interpretations are opinions based on inferences from electrical or other measurements and we cannot and do not guarantee the accuracy or correctness of any interpretation, and we shall not, except in the case of gross or willful negligence on our part, be liable or responsible for any loss, costs, damages, or expenses incurred or sustained by anyone resulting from any interpretation made by any of our officers, agents or employees. These interpretations are also subject to our general terms and conditions set out in our current Price Schedule.

WARRIOR 7.0 SOFTWARE - Comments

Sensor	Offset (ft)	Schematic	Description	Length (ft)	O.D. (in)	Weight (lb)
			CHD-STNDRD Standard Cable Head	1.00	1.43	2.00
			CENT-SNDX 6 Arm PRC 022 W/ GO ADAPTORS	2.50	2.38	22.00
WVFS8	13.48		SCBLTEKCO-TEKCO (TEKCO234_3024) Tekco 2 3/4" Radial Bond	9.08	2.75	50.00
WVFS7	13.48					
WVFS6	13.48					
WVFS5	13.48					
WVFS4	13.48					
WVFS3	13.48					
WVFS2	13.48					
WVFS1	13.48					
WVF3FT	12.73					
WVF5FT	11.73					
WVFSYNC	8.48		CENT-SNDX 6 Arm PRC 022 W/ GO ADAPTORS	2.50	2.38	22.00
WVFCAL	8.48					
CCL	4.77		CCL-APPLIED (Applied_2.75)	2.02	2.75	34.00
GR	1.27		GR-TEKCO234 (TEKCO234_314) Tekco 2 3/4" Gamma Ray	3.69	2.75	20.00
			Bull_Plug-1.7/16_GO Titan 1 7/16" Female Bull Plug	0.27	1.44	1.00

Dataset: svg7-41b.db: field/well/mainpass/pass1
 Total length: 21.06 ft
 Total weight: 151.00 lb
 O.D.: 2.75 in

Calibration Report

Database File: svg7-41b.db
 Dataset Pathname: mainpass/pass1
 Dataset Creation: Wed Jul 10 09:24:16 2024

Segmented Cement Bond Log Calibration Report

Serial Number: TEKCO234_3024
 Tool Model: TEKCO
 Calibration Casing Diameter: 4.500 in
 Calibration Depth: 89.237 ft

Master Calibration, performed Wed Jul 10 09:21:48 2024:

	Raw (v)		Calibrated (mv)		Results	
	Zero	Cal	Zero	Cal	Gain	Offset
3'	0.067	2.500	1.000	81.196	32.957	-1.196
CAL	1.082	1.083				
5'	0.007	2.500	1.000	81.196	32.162	0.790
SUM						
S1	0.037	2.500	0.000	81.196	32.960	-1.205
S2	0.037	2.500	0.000	81.196	32.962	-1.208
S3	0.043	2.500	0.000	81.196	33.046	-1.420
S4	0.032	2.500	0.000	81.196	32.905	-1.067
S5	0.029	2.500	0.000	81.196	32.860	-0.953
S6	0.034	2.500	0.000	81.196	32.928	-1.123
S7	0.030	2.500	0.000	81.196	32.879	-1.001
S8	0.029	2.500	0.000	81.196	32.854	-0.940

Internal Reference Calibration, performed Tue Feb 05 14:47:36 2008:

	Raw (v)		Calibrated (v)		Results	
	Zero	Cal	Zero	Cal	Gain	Offset
CAL	0.000	0.000	1.082	1.083	1.000	0.000

Air Zero Calibration, performed Mon Apr 19 17:04:13 2010:

	Raw (v)		Calibrated (v)		Results	
	Zero	Cal	Zero	Cal	Gain	Offset
3'	0.000		0.000			0.000
5'	0.000		0.000			0.000
SUM						
S1	0.000		0.000			0.000
S2	0.000		0.000			0.000
S3	0.000		0.000			0.000
S4	0.000		0.000			0.000
S5	0.000		0.000			0.000
S6	0.000		0.000			0.000
S7	0.000		0.000			0.000
S8	0.000		0.000			0.000

Log Variables

Database: C:\ProgramData\Warrior\Data\svg7-41b.db
 Dataset: field/well/mainpass/pass1/_vars_

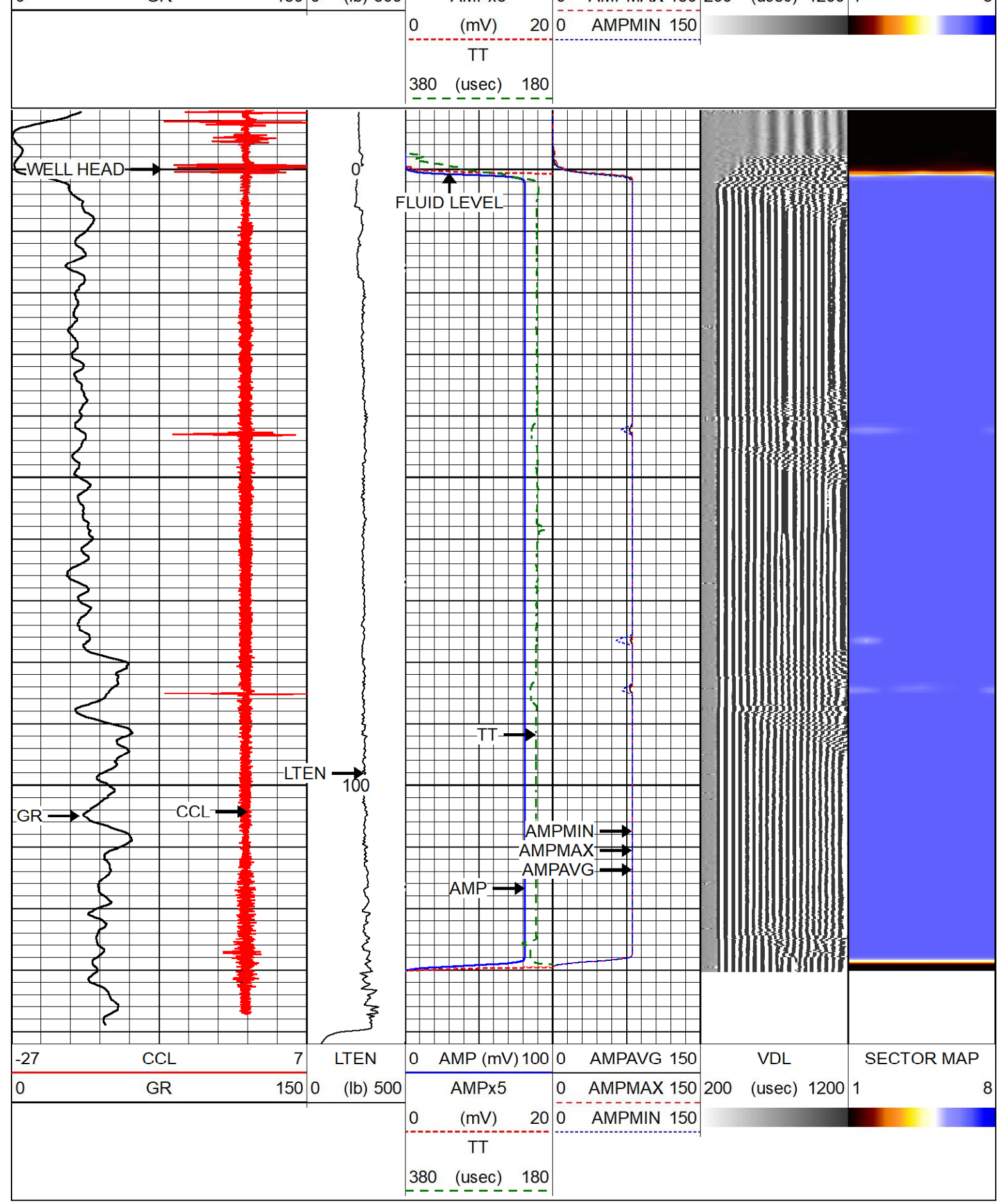
Top - Bottom

BOREID	BOTTEMP	CASEOD	CASETHCK	CASEWGHT	MAXAMPL	MINAMPL	MINATTN
in	degF	in	in	lb/ft	mV	mV	db/ft
7.875	100	4.5	0	11.6	0	1	0.8
PERFS	PPT	SRFTEMP	TDEPTH				
No	usec	degF	ft				
	0	0	0				

Variable Description
 BOREID : Borehole I.D.
 BOTTEMP : Bottom Hole Temperature
 CASEOD : Casing O.D.
 CASETHCK : Casing Thickness
 CASEWGHT : Casing Weight
 MAXAMPL : Maximum Amplitude
 MINAMPL : Minimum Amplitude
 MINATTN : Minimum Attenuation
 PERFS : Perforation Flag
 PPT : Predicted Pipe Time
 SRFTEMP : Surface Temperature
 TDEPTH : Total Depth

MAIN PASS

Database File: svg7-41b.db
 Dataset Pathname: mainpass/pass1
 Presentation Format: r_axcbl
 Dataset Creation: Wed Jul 10 09:24:16 2024
 Charted by: Depth in Feet scaled 1:240



Company	CEARUS OIL AND GAS
Well	SVG FEDERAL 7-41B
Field	PARACHUTE
County	GARFIELD
State	COLORADO