



**RADIAL SECTOR CEMENT BOND LOG/
GAMMA RAY/CCL**

Company	CAERUS OIL AND GAS	State	COLORADO
Well	SVG FEDERAL 6-44C	Location:	API #: 0504519280
Field	PARACHUTE	County	GARFIELD
Permanent Datum	SEC 6 TWP 8S RGE 9SW	Elevation	K.B. N/A L.F. N/A G.L. N/A
Log Measured From	GROUND LEVEL	Elevation	N/A
Drilling Measured From	GROUND LEVEL	Drilling Measured From	0'
Date	JUNE 26, 2024	Run Number	MAIN PASS
Run Number	MAIN PASS	Depth Driller	N/A
Present Depth Driller	N/A	Depth Logger	144'
Bottom Logged Interval	144'	Top Log Interval	144'
Fluid Level	SURFACE	Fluid Level Type	FRESH WATER
Max. Recorded Temp.	N/A	Estimated Cement Top	218
Equipment Number	218	Location	GRAND JUNCTION
Recorded By	D.PACE	Witnessed By	E.KOENIG
Boothole Record	From	To	
Casing Record	From	To	

<<< Fold Here >>>

All interpretations are opinions based on inferences from electrical or other measurements and we cannot and do not guarantee the accuracy or correctness of any interpretation, and we shall not, except in the case of gross or willful negligence on our part, be liable or responsible for any loss, costs, damages, or expenses incurred or sustained by anyone resulting from any interpretation made by any of our officers, agents or employees. These interpretations are also subject to our general terms and conditions set out in our current Price Schedule.

WARRIOR 7.0 SOFTWARE - Comments

Sensor	Offset (ft)	Schematic	Description	Length (ft)	O.D. (in)	Weight (lb)
			CHD-STNDRD Standard Cable Head	1.00	1.43	2.00
			CENT-SNDX 6 Arm PRC 022 W/ GO ADAPTORS	2.50	2.38	22.00
WVFS8	13.48		SCBLTEKCO-TEKCO (TEKCO234_3024) Tekco 2 3/4" Radial Bond	9.08	2.75	50.00
WVFS7	13.48					
WVFS6	13.48					
WVFS5	13.48					
WVFS4	13.48					
WVFS3	13.48					
WVFS2	13.48					
WVFS1	13.48					
WVF3FT	12.73					
WVF5FT	11.73					
WVFSYNC	8.48		CENT-SNDX 6 Arm PRC 022 W/ GO ADAPTORS	2.50	2.38	22.00
WVFCAL	8.48					
CCL	4.77		CCL-APPLIED (Applied_2.75)	2.02	2.75	34.00
GR	1.27		GR-TEKCO234 (TEKCO234_314) Tekco 2 3/4" Gamma Ray	3.69	2.75	20.00
			Bull_Plug-1 7/16_GO Titan 1 7/16" Female Bull Plug	0.27	1.44	1.00

Dataset: svged6-44c.db; field/well/mainpaass/pass1
 Total length: 21.06 ft
 Total weight: 151.00 lb
 O.D.: 2.75 in

Calibration Report	
Database File	svged6-44c.db
Dataset Pathname	mainpaass/pass1
Dataset Creation	Wed Jun 26 08:53:10 2024

Segmented Cement Bond Log Calibration Report	
Serial Number:	TEKCO234_3024
Tool Model:	TEKCO
Calibration Casing Diameter:	4.500 in
Calibration Depth:	87.983 ft

Master Calibration, performed Wed Jun 26 08:52:06 2024:

	Raw (v)		Calibrated (mv)		Results	
	Zero	Cal	Zero	Cal	Gain	Offset
3'	0.052	2.500	1.000	81.196	32.756	-0.695
CAL	1.007	1.006				
5'	0.006	2.500	1.000	81.196	32.154	0.811
SUM						
S1	0.078	2.500	0.000	81.196	33.528	-2.625
S2	0.079	2.500	0.000	81.196	33.541	-2.656
S3	0.081	2.500	0.000	81.196	33.560	-2.703
S4	0.080	2.500	0.000	81.196	33.550	-2.679
S5	0.080	2.500	0.000	81.196	33.552	-2.685
S6	0.080	2.500	0.000	81.196	33.556	-2.693
S7	0.079	2.500	0.000	81.196	33.541	-2.657
S8	0.080	2.500	0.000	81.196	33.553	-2.686

Internal Reference Calibration, performed Tue Feb 05 14:47:36 2008:

	Raw (v)		Calibrated (v)		Results	
	Zero	Cal	Zero	Cal	Gain	Offset
CAL	0.000	0.000	1.007	1.006	1.000	0.000

Air Zero Calibration, performed Mon Apr 19 17:04:13 2010:

	Raw (v)		Calibrated (v)		Results	
	Zero	Zero	Zero	Zero	Offset	
3'	0.000	0.000	0.000	0.000	0.000	
5'	0.000	0.000	0.000	0.000	0.000	
SUM						
S1	0.000	0.000	0.000	0.000	0.000	
S2	0.000	0.000	0.000	0.000	0.000	
S3	0.000	0.000	0.000	0.000	0.000	
S4	0.000	0.000	0.000	0.000	0.000	
S5	0.000	0.000	0.000	0.000	0.000	
S6	0.000	0.000	0.000	0.000	0.000	
S7	0.000	0.000	0.000	0.000	0.000	
S8	0.000	0.000	0.000	0.000	0.000	

Log Variables Database: C:\ProgramData\Warrior\Data\svged6-44c.db
 Dataset: field/well/mainpaass/pass1_vars_

Top - Bottom							
BOREID	BOTTEMP	CASEOD	CASETHCK	CASEWGHT	MAXAMPL	MINAMPL	MINATTN
in	degF	in	in	lb/ft	mV	mV	db/ft
7.875	100	4.5	0	11.6	0	1	0.8
PERFS	PPT	SRFTEMP	TDEPTH				
No	0	0	0				

Variable Description

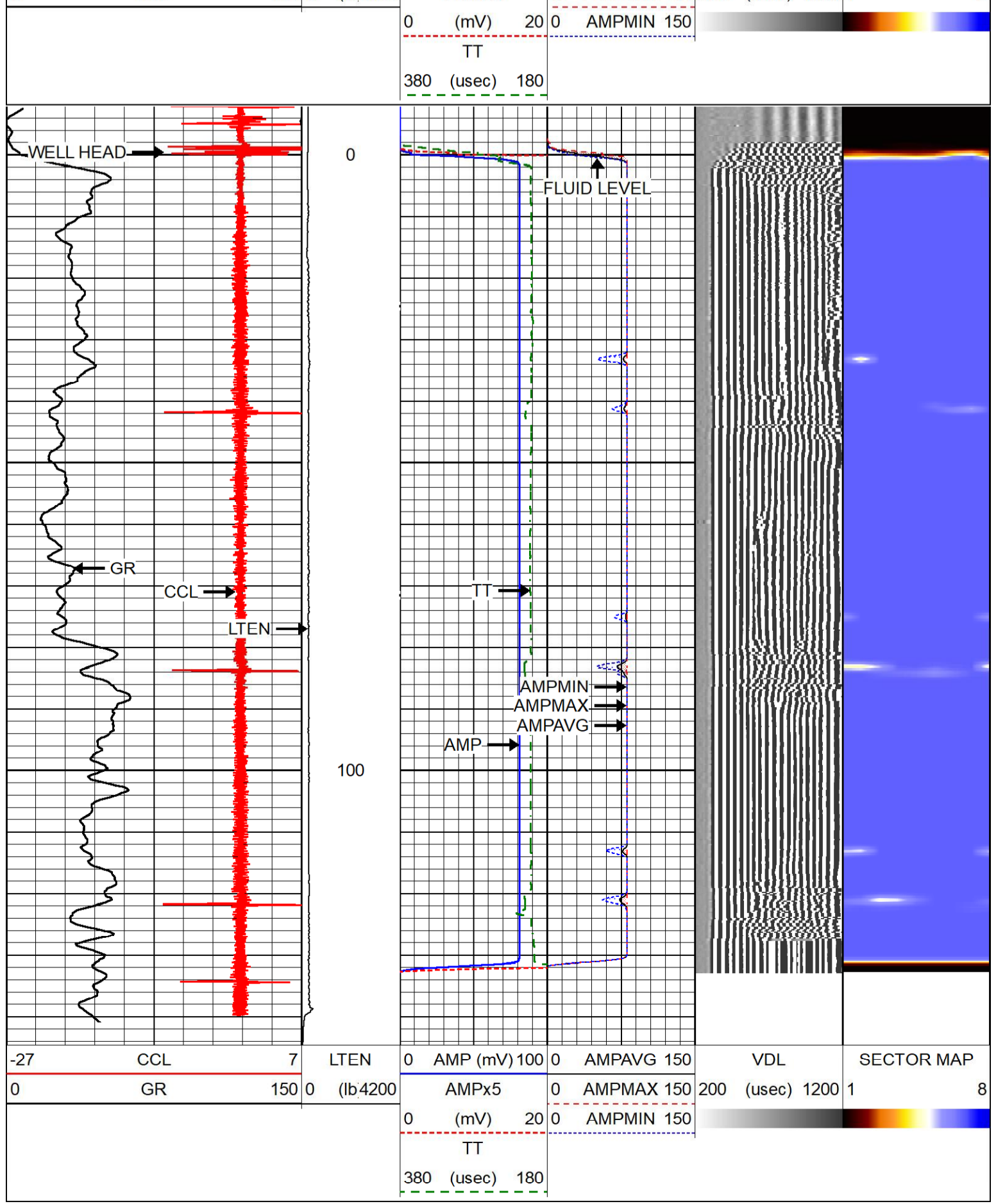
BOREID : Borehole I.D.
 BOTTEMP : Bottom Hole Temperature
 CASEOD : Casing O.D.
 CASETHCK : Casing Thickness

CASEWGHT : Casing Weight
 MAXAMPL : Maximum Amplitude
 MINAMPL : Minimum Amplitude
 MINATTN : Minimum Attenuation

PERFS : Perforation Flag
 PPT : Predicted Pipe Time
 SRFTEMP : Surface Temperature
 TDEPTH : Total Depth

MAIN PASS

Database File	svged6-44c.db
Dataset Pathname	mainpaass/pass1
Presentation Format	r_axcbl
Dataset Creation	Wed Jun 26 08:53:10 2024
Charted by	Depth in Feet scaled 1:240



Company	CAERUS OIL AND GAS
Well	SVG FEDERAL 6-44C
Field	PARACHUTE
County	GARFIELD
State	COLORADO