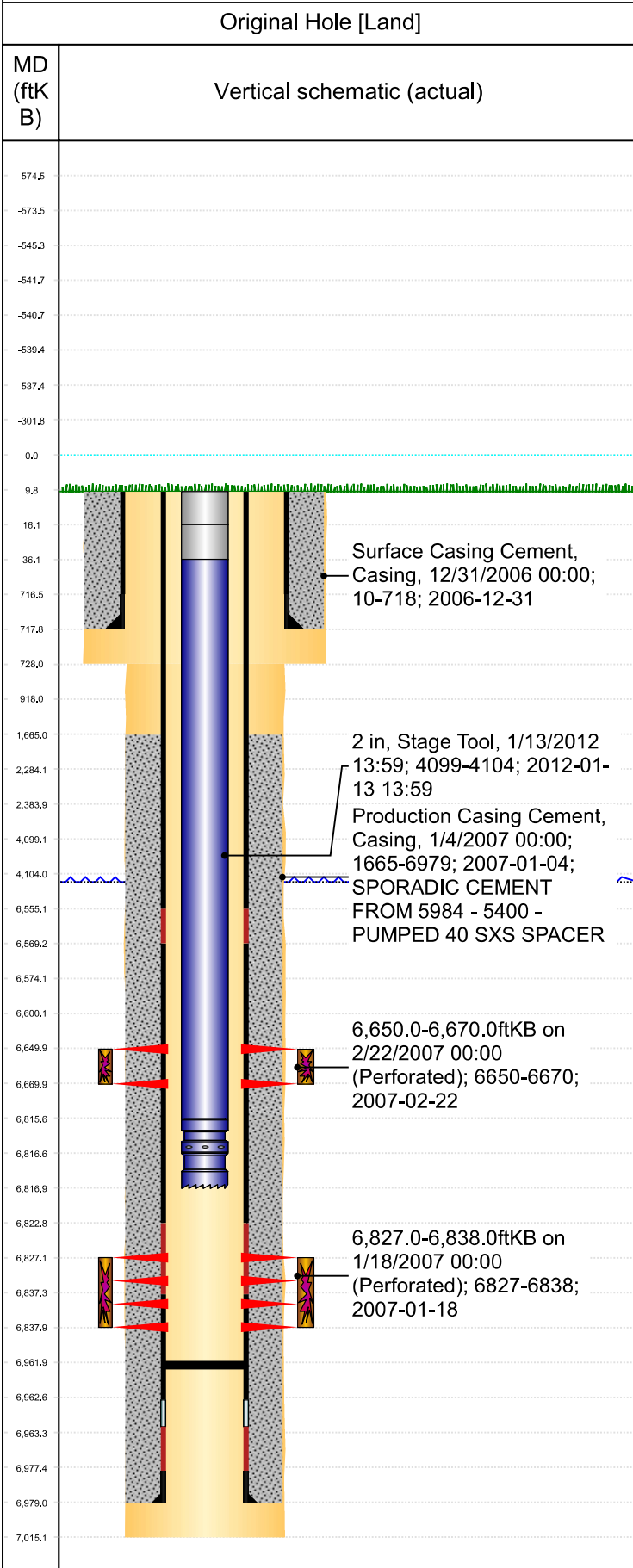




P&A Wellbore For State

Well Name: FOSS USX AA05-25



| Well Header | | | | | | | | | |
|--|-------------|----------------------------------|--------------|----------------------|-------------|------------------------------------|-----------------------------|--|--|
| Surface UWI 0512324562 | | Business Unit Rockies | | Gov Auth Dist | | Prod Tree Loc Land | | | |
| Orig. KB to Gnd (ft) 10.00 | | Original Spud Date 12/30/2006 | | Abandon Date | | Well Sub-Status TA (AT SURFACE) | | High... | |
| | | | | | | | | N | |
| Comment NO RECENT TAG DEPTH GIVEN. STATE SHOWS SHUT IN SINCE APR 2017. NO INFO IN FILE REGARDING STAGE TOOL @ 4099' AND NO JOB DONE AROUND 1/13/12. ??? | | | | | | | | | |
| Surface Location (Congressional) | | | | | | | | | |
| Qtr 3 SW | Qtr 4 SW | Section 5 | Twonshp 6 | Twonsh... N | Range 63 | Rng E/... W | Latitude (°) 40.51177055 | Longitude (°) -104.465571387 | |
| Wellbore Sections | | | | | | | | | |
| Section Des | | Hole Size (in) | | Top Depth (ftKB) | | Btm Depth (ftKB) | | | |
| SURFACE | | 12 1/4 | | 10.0 | | 728.0 | | | |
| PRODUCTION | | 7 7/8 | | 728.0 | | 7,015.0 | | | |
| Casing Strings | | | | | | | | | |
| Csg Des | | Run Date | | OD (in) | | Wt/Len (lb/ft) | | Grade | |
| Surface | | 12/31/2006 | | 8 5/8 | | 24.00 | | M-80 | |
| Production Casing | | 1/4/2007 | | 4 1/2 | | 11.60 | | M-80 | |
| Cement | | | | | | | | | |
| Des | | Start Date | | Top (ftKB) | | Btm (ftKB) | | | |
| SURFACE CASING CEMENT | | 12/31/2006 | | 10.0 | | 718.0 | | | |
| PRODUCTION CASING CEMENT | | 1/4/2007 | | 1,665.0 | | 6,979.0 | | | |
| Zone Statuses | | | | | | | | | |
| Zone Name | | Status Date | | Status | | Fluid Type | | Job | |
| CODELL | | 3/13/2007 | | PR | | | | DRILLING/COMPLETION - ORIGINAL, 12/30/200... | |
| CODELL | | 2/12/2010 | | PR | | | | | |
| NIOBRARA | | 3/13/2007 | | PR | | | | DRILLING/COMPLETION - ORIGINAL, 12/30/200... | |
| NIOBRARA | | 2/12/2010 | | PR | | | | | |
| Perforation Data | | | | | | | | | |
| Linked Zone | | Explosive Type | | Entered Shot Total | | Top (ftKB) | | Btm (ftKB) | |
| NIOBRARA, Original Hole | | B | | 80 | | 6,650.0 | | 6,670.0 | |
| CODELL, Original Hole | | | | 44 | | 6,827.0 | | 6,838.0 | |
| Stim/Frac Stage | | | | | | | | | |
| Zone | | Start Date | | Top (ftKB) | | Btm (ftKB) | | | |
| NIOBRARA, Original Hole | | 2/22/2007 | | 6,650.0 | | 6,670.0 | | | |
| CODELL, Original Hole | | 2/22/2007 | | 6,827.0 | | 6,838.0 | | | |
| Other In Hole | | | | | | | | | |
| Run Date | | Des | | Make | | OD (in) | | Top (ftKB) | |
| 1/13/2012 | | Stage Tool | | | | 2 | | 4,099.0 | |
| Logs | | | | | | | | | |
| Date | | Type | | | | Depth Top (MD) (ftKB) | | Btm (ftKB) | |
| 1/16/2006 | | CBL/CCL/GR | | | | 1,552 | | 6,942.0 | |
| 1/3/2007 | | COMPENSATED DENSITY | | | | 2,650 | | 6,995.0 | |
| 1/3/2007 | | INDUCTION | | | | 718 | | 7,015.0 | |
| 10/28/2013 | | GYRO | | | | 10 | | 6,750.0 | |
| Wellbore Plug Back Total Depths | | | | | | | | | |
| Date | | Type | | Com | | | | PBTD (ftKB) | |
| 1/4/2007 | | FLOAT SHOE | | FLOAT SHOE W/ BAFFLE | | | | 6,963 | |
| 11/19/2007 | | PLUG | | TAG TO LAND TUBING | | | | 6,962 | |