

TABLE 1  
SUMMARY OF VOLATILE ORGANIC SOIL CHEMISTRY DATA  
PDC 69175  
RAINANCE FD OFF-SITE TANK PAD 20-202HNX, WELD COUNTY, COLORADO  
REM # NA

Sample ID	Sample Date	Depth (ft)	Benzene (mg/kg)	Toluene (mg/kg)	Ethyl-Benzene (mg/kg)	Xylenes (mg/kg)	1,2,4-Trimethyl-Benzene (mg/kg)	1,3,5-Trimethyl-Benzene (mg/kg)	Naphthalene (mg/kg)	TPH (mg/kg)	TPH GRO (mg/kg)	TPH DRO (mg/kg)	TPH ORO (mg/kg)
ECMC Table 915-1 Limits (Residential SSL)			1.2	490	5.8	58	30	27	2	500	500**		
ECMC Table 915-1 Limits (Protection of Groundwater SSL)			0.0026	0.69	0.78	9.9	0.0081	0.0087	0.0038	500	500**		
Waste Char.	03/22/2024	Grab	34	160	50	220	69	19	8.4	22038	9000	12000	1300
SS-01 1.5FT	03/22/2024	1.5	0.023	0.046	0.024	0.14	0.11	0.027	0.044	<500	3.3	<50	<50
SS-01 2.5FT	03/22/2024	2.5	<0.0020	0.0085	<0.0050	<0.010	<0.0050	<0.0050	<0.0038	<500	<0.50	<50	<50
SS-04 1FT	03/22/2024	1	<0.0020	0.0081	<0.0050	<0.010	<0.0050	<0.0050	<0.0038	<500	<0.50	<50	<50
SS-12 0.5FT	03/25/2024	0.5	<0.0020	0.040	0.01	<0.010	0.020	0.0054	<0.0038	<500	0.75	<50	<50
SS-13 2FT	03/25/2024	2	<0.0020	<0.0050	<0.0050	<0.010	<0.0050	<0.0050	<0.0038	<500	<0.50	<50	<50
SS-14 2FT	03/25/2024	2	<0.0020	0.018	<0.0050	<0.010	<0.0050	<0.0050	<0.0038	<500	<0.50	<50	<50
SS-15 2FT	03/25/2024	2	<0.0020	<0.0050	<0.0050	<0.010	<0.0050	<0.0050	<0.0038	<500	<0.50	<50	<50
SS-16 2FT	03/25/2024	2	<0.0020	<0.0050	<0.0050	<0.010	<0.0050	<0.0050	<0.0038	<500	<0.50	<50	<50
SS-17 3FT	03/25/2024	3	<0.0020	<0.0050	<0.0050	<0.010	<0.0050	<0.0050	<0.0038	<500	<0.50	<50	<50
FS-01 4 FT	3/26/2024	4	<0.0020	0.033	<0.0050	0.015	<0.0050	<0.0050	<0.0038	<500	<0.50	<50	<50
FS-02 4 FT	3/26/2024	4	<0.0020	<0.0050	<0.0050	<0.010	<0.0050	<0.0050	<0.0038	<500	<0.50	<50	<50
SS-18 2 FT	3/26/2024	2	<0.0020	<0.0050	<0.0050	<0.010	<0.0050	<0.0050	<0.0038	<500	<0.50	<50	<50
SS-19 2 FT	3/26/2024	2	<0.0020	<0.0050	<0.0050	<0.010	<0.0050	<0.0050	<0.0038	<500	<0.50	<50	<50
SS-20 2 FT	3/26/2024	2	<0.0020	<0.0050	<0.0050	<0.010	<0.0050	<0.0050	<0.0038	<500	<0.50	<50	<50
SS-21 3 FT	3/26/2024	3	<0.0020	<0.0050	<0.0050	<0.010	<0.0050	<0.0050	<0.0038	<500	<0.50	<50	<50
SS-22-N 1.5 Ft	3/28/2024	1.5	<0.0020	1.1	2.9	19.0	18.0	4.8	2.5	2480	780	1400	300
SS-22-S 1.5 Ft	3/28/2024	1.5	<0.0020	<0.0050	<0.0050	<0.010	<0.0050	<0.0050	<0.0038	<500	<0.50	<50	<50
FS-22 2 Ft	3/28/2024	2	<0.0020	0.016	<0.0050	0.012	<0.0050	<0.0050	<0.0038	<500	<0.50	<50	<50
SS-23-N 1.5 Ft	3/28/2024	3	<0.0020	<0.0050	<0.0050	<0.010	<0.0050	<0.0050	<0.0038	<500	<0.50	<50	<50
SS-23-S 1.5 Ft	3/28/2024	3	<0.0020	<0.0050	<0.0050	<0.010	<0.0050	<0.0050	<0.0038	<500	<0.50	<50	<50
FS-23 2 Ft	3/28/2024	3	<0.0020	0.022	0.0058	0.029	0.0078	<0.0050	<0.0038	<500	<0.50	<50	<50
SS-24-N 2 Ft	3/28/2024	2.5	<0.0020	<0.0050	<0.0050	<0.010	<0.0050	<0.0050	<0.0038	<500	<0.50	<50	<50
SS-24-S 2 Ft	3/28/2024	2.5	<0.0020	<0.0050	<0.0050	<0.010	<0.0050	<0.0050	<0.0038	<500	<0.50	<50	<50
FS-24 3 Ft	3/28/2024	3	<0.0020	<0.0050	<0.0050	<0.010	<0.0050	<0.0050	<0.0038	<500	<0.50	<50	<50
SS-25-N 3 Ft	3/28/2024	3	<0.0020	<0.0050	<0.0050	<0.010	<0.0050	<0.0050	<0.0038	<500	<0.50	<50	<50
SS-25-S 3 Ft	3/28/2024	3	<0.0020	<0.0050	<0.0050	<0.010	<0.0050	<0.0050	<0.0038	<500	<0.50	<50	<50
FS-25 4 Ft	3/28/2024	4	<0.0020	<0.0050	<0.0050	<0.010	<0.0050	<0.0050	<0.0038	<500	<0.50	<50	<50
SS-26-N 3 Ft	3/28/2024	3	<0.0020	<0.0050	<0.0050	<0.010	<0.0050	<0.0050	<0.0038	<500	<0.50	<50	<50
SS-26-S 3 Ft	3/28/2024	3	<0.0020	<0.0050	<0.0050	<0.010	<0.0050	<0.0050	<0.0038	<500	<0.50	<50	<50
FS-26 4 Ft	3/28/2024	4	<0.0020	<0.0050	<0.0050	<0.010	<0.0050	<0.0050	<0.0038	<500	<0.50	<50	<50
SS-27-N 2 Ft	3/28/2024	2	<0.0020	<0.0050	<0.0050	<0.010	<0.0050	<0.0050	<0.0038	<500	<0.50	<50	<50
SS-27-S 2 Ft	3/28/2024	2	<0.0020	<0.0050	<0.0050	<0.010	<0.0050	<0.0050	<0.0038	<500	<0.50	<50	<50
FS-27 3 Ft	3/28/2024	3	<0.0020	<0.0050	<0.0050	<0.010	<0.0050	<0.0050	<0.0038	<500	<0.50	<50	<50
SS-28-N 2.5 Ft	3/28/2024	2.5	0.13	0.72	0.27	1.2	0.45	0.12	0.044	5528	38	4600	890
SS-28-S 2.5 Ft	3/28/2024	2.5	<0.0020	<0.0050	<0.0050	<0.010	<0.0050	<0.0050	<0.0038	<500	<0.50	<50	<50
FS-28 3 Ft	3/28/2024	3	<0.0020	<0.0050	<0.0050	<0.010	<0.0050	<0.0050	<0.0038	<500	<0.50	<50	<50
SS-40 3 Ft	3/29/2024	3	<0.0020	<0.0050	<0.0050	<0.010	<0.0050	<0.0050	<0.0038	<500	<0.50	<50	<50
SS-41 2 Ft	3/29/2024	2	<0.0020	<0.0050	0.014	0.064	0.036	<0.0050	<0.0038	602	2.0	440	160
SS-42 2 Ft	3/29/2024	2	0.65	1.5	0.82	3.9	1.7	0.45	0.093	528	98	340	90
SS-43 2 Ft	3/29/2024	2	<0.0020	<0.0050	<0.0050	<0.010	<0.0050	<0.0050	<0.0038	<500	<0.50	<50	<50
SS-44 2 Ft	3/29/2024	2	<0.0020	<0.0050	<0.0050	<0.010	<0.0050	<0.0050	<0.0038	<500	<0.50	<50	<50
SS-45 2 Ft	3/29/2024	2	<0.0020	<0.0050	<0.0050	<0.010	<0.0050	<0.0050	<0.0038	<500	<0.50	<50	<50
FS-40 3 Ft	3/29/2024	3	<0.0020	<0.0050	<0.0050	<0.010	<0.0050	<0.0050	<0.0038	<500	<0.50	<50	<50

Sample ID	Sample Date	Depth (ft)	Benzene (mg/kg)	Toluene (mg/kg)	Ethyl-Benzene (mg/kg)	Xylenes (mg/kg)	1,2,4-Trimethyl-Benzene (mg/kg)	1,3,5-Trimethyl-Benzene (mg/kg)	Naphthalene (mg/kg)	TPH (mg/kg)	TPH GRO (mg/kg)	TPH DRO (mg/kg)	TPH ORO (mg/kg)
ECMC Table 915-1 Limits (Residential SSL)			1.2	490	5.8	58	30	27	2	500	500**		
ECMC Table 915-1 Limits (Protection of Groundwater SSL)			0.0026	0.69	0.78	9.9	0.0081	0.0087	0.0038	500	500**		
FS-41 3 Ft	3/29/2024	3	<0.0020	0.15	0.071	0.33	<b>0.14</b>	<b>0.032</b>	<0.0038	6.9	6.9	<50	<50
FS-42 2 Ft	3/29/2024	2	<0.0020	<0.0050	<0.0050	<0.010	<0.0050	<0.0050	<0.0038	<500	<0.50	<50	<50
FS-43 3 Ft	3/29/2024	3	<0.0020	<0.0050	<0.0050	<0.010	<0.0050	<0.0050	<0.0038	<500	<0.50	<50	<50
FS-44 2 Ft	3/29/2024	2	<0.0020	<0.0050	<0.0050	0.032	<b>0.010</b>	<0.0050	<0.0038	0.90	0.90	<50	<50
FS-45 2 Ft	3/29/2024	2	<0.0020	<0.0050	<0.0050	<0.010	<0.0050	<0.0050	<0.0038	<500	<0.50	<50	<50
SS-29-N 2 Ft	3/29/2024	2	<0.0020	<0.0050	<0.0050	<0.010	<0.0050	<0.0050	<0.0038	<500	<0.50	<50	<50
SS-29-S 2 Ft	3/29/2024	2	<0.0020	<0.0050	<0.0050	<0.010	<0.0050	<0.0050	<0.0038	<500	<0.50	<50	<50
FS-29 3 Ft	3/29/2024	3	<0.0020	<0.0050	<0.0050	<0.010	<0.0050	<0.0050	<0.0038	<500	<0.50	<50	<50
SS-30-N 2 Ft	3/29/2024	2	<b>0.22</b>	0.68	0.21	1.0	<b>0.19</b>	<b>0.048</b>	<b>0.035</b>	17	17	<50	<50
SS-30-S 2 Ft	3/29/2024	2	<0.0020	<0.0050	<0.0050	<0.010	<0.0050	<0.0050	<0.0038	<500	<0.50	<50	<50
FS-30 3 Ft	3/29/2024	3	<0.0020	<0.0050	<0.0050	<0.010	<0.0050	<0.0050	<0.0038	<500	<0.50	<50	<50
FS-46 2 Ft	3/29/2024	2	<0.0020	<0.0050	<0.0050	<0.010	<0.0050	<0.0050	<0.0038	<500	<0.50	<50	<50
FS-47 2 Ft	3/29/2024	2	<0.0020	<0.0050	<0.0050	<0.010	<0.0050	<0.0050	<0.0038	<500	<0.50	<50	<50
FS-Release 6 Ft	4/1/2024	6	<0.0020	<0.0050	<0.0050	<0.010	<0.0050	<0.0050	<0.0038	<500	<0.50	<50	<50
SS-30-N-2 3 Ft	4/2/2024	3	<0.0020	<0.0050	<0.0050	<0.010	<0.0050	<0.0050	<0.0038	<500	<0.50	<50	<50
SS-41-2	4/2/2024	2	<0.0020	<0.0050	<0.0050	<0.010	<0.0050	<0.0050	<0.0038	<500	<0.50	<50	<50
SS-42-2	4/2/2024	2	<0.0020	<0.0050	<0.0050	<0.010	<0.0050	<0.0050	<0.0038	<500	<0.50	<50	<50
FS-41-2	4/2/2024	3.5	<0.0020	<0.0050	<0.0050	<0.010	<0.0050	<0.0050	<0.0038	<500	<0.50	<50	<50
FS-44-2	4/2/2024	2.5	<0.0020	<0.0050	<0.0050	<0.010	<0.0050	<0.0050	<0.0038	<500	<0.50	<50	<50
SS-28-N-2	4/5/2024	3	<0.0020	<0.0050	<0.0050	<0.010	<0.0050	<0.0050	<0.0038	<500	<0.50	<50	<50
FS-48 1 Ft	4/5/2024	1	<0.0020	<0.0050	<0.0050	<0.010	<0.0050	<0.0050	<0.0038	<500	<0.50	<50	<50
FS-49 2 Ft	4/5/2024	2	<0.0020	<0.0050	<0.0050	<0.010	<0.0050	<0.0050	<0.0038	<500	<0.50	<50	<50
FS-50 2 Ft	4/5/2024	2	<0.0020	<0.0050	<0.0050	<0.010	<0.0050	<0.0050	<0.0038	<500	<0.50	<50	<50
SS-46	4/5/2024	1	<0.0020	<0.0050	<0.0050	<0.010	<0.0050	<0.0050	<0.0038	<500	<0.50	<50	<50
SS-47	4/5/2024	1.5	<0.0020	<0.0050	<0.0050	<0.010	<0.0050	<0.0050	<0.0038	<500	<0.50	<50	<50
SS-48	4/5/2024	1	<0.0020	<0.0050	<0.0050	<0.010	<0.0050	<0.0050	<0.0038	<500	<0.50	<50	<50
SS-49	4/5/2024	1	<0.0020	<0.0050	<0.0050	<0.010	<0.0050	<0.0050	<0.0038	<500	<0.50	<50	<50
SS-50	4/5/2024	1	<0.0020	<0.0050	<0.0050	<0.010	<0.0050	<0.0050	<0.0038	<500	<0.50	<50	<50
FS-51 0.5 Ft	4/5/2024	0.5	<0.0020	<0.0050	<0.0050	<0.010	<0.0050	<0.0050	<0.0038	<500	<0.50	<50	<50
SS-51	4/9/2024	2.5	<0.00200	<0.00200	<0.00200	<0.00200	<0.00200	<0.00200	<0.00200	<500	<0.200	<25.0	<100
SS-52	4/9/2024	1.5	<0.00200	<0.00200	<0.00200	<0.00200	<0.00200	<0.00200	<0.00200	<500	<0.200	<25.0	<100
SS-53	4/9/2024	1.5	<0.00200	<0.00200	<0.00200	<0.00200	<0.00200	<0.00200	<0.00200	<500	<0.200	<25.0	<100
SS-54	4/9/2024	1.5	<0.00200	<0.00200	<0.00200	<0.00200	<0.00200	<0.00200	<0.00200	<500	<0.200	<25.0	<100
FS-51	4/9/2024	2	<0.00200	<0.00200	<0.00200	<0.00200	<0.00200	<0.00200	<0.00200	<500	<0.200	<25.0	<100
FS-52	4/9/2024	2	<0.00200	<0.00200	<0.00200	<0.00200	<0.00200	<0.00200	<0.00200	<500	<0.200	<25.0	<100
SS-22-N-2	4/9/2024	2	<0.00200	<0.00200	<0.00200	<0.00200	<0.00200	<0.00200	<0.00200	<500	<0.200	<25.0	<100

- Bold values exceed the ECMC Table 915-1 limit(s)
- Red & blue highlighted soil analytical values indicate an exceedance of the referenced soil screening level (SSL)
- \* Indicates laboratory minimum detection limit in excess of SSL
- \*\* Summation of GRO+DRO+ORO must be less than 500 mg/kg

NA - Not analyzed

Source material characterization sample, excavated and transported off site for disposal.

Material excavated and transported off site for disposal.



Sample ID	Sample Date	Depth (ft)	Acenaphthene (mg/kg)	Anthracene (mg/kg)	Benzo (a) Anthracene (mg/kg)	Benzo (a) Pyrene (mg/kg)	Benzo (b) Fluoranthene (mg/kg)	Benzo (k) Fluoranthene (mg/kg)	Chrysene (mg/kg)	Dibenzo (a,h) Anthracene (mg/kg)	Fluoranthene (mg/kg)	Fluorene (mg/kg)	Indeno (1,2,3-cd) Pyrene (mg/kg)	Pyrene (mg/kg)	1-Methyl - Naphthalene (mg/kg)	2-Methyl - Naphthalene (mg/kg)
ECMC Table 915-1 Limits (Residential SSL)			360	1800	1.1	0.11	1.1	11	110	0.11	240	240	1.1	180	18	24
ECMC Table 915-1 Limits (Protection of Groundwater SSL)			0.55	5.8	0.011	0.24	0.3	2.9	9	0.096	8.9	0.54	0.98	1.3	0.006	0.019
FS-40 3 Ft	3/29/2024	3	<0.00500	<0.00500	<0.00500	<0.00500	<0.00500	<0.00500	<0.00500	<0.00500	<0.00500	<0.00500	<0.00500	<0.00500	<0.00500	<0.00500
FS-41 3 Ft	3/29/2024	3	<0.00500	<0.00500	<0.00500	<0.00500	<0.00500	<0.00500	<0.00500	<0.00500	<0.00500	0.00688	<0.00500	<0.00500	<0.00500	<0.00500
FS-42 2 Ft	3/29/2024	2	<0.00500	<0.00500	<0.00500	<0.00500	<0.00500	<0.00500	<0.00500	<0.00500	<0.00500	<0.00500	<0.00500	<0.00500	<0.00500	<0.00500
FS-43 3 Ft	3/29/2024	3	<0.00500	<0.00500	<0.00500	<0.00500	<0.00500	<0.00500	<0.00500	<0.00500	<0.00500	<0.00500	<0.00500	<0.00500	<0.00500	<0.00500
FS-44 2 Ft	3/29/2024	2	<0.00500	<0.00500	<0.00500	<0.00500	<0.00500	<0.00500	<0.00500	<0.00500	<0.00500	<0.00500	<0.00500	<0.00500	<b>0.0393</b>	<b>0.044</b>
FS-45 2 Ft	3/29/2024	2	<0.00500	<0.00500	<0.00500	<0.00500	<0.00500	<0.00500	<0.00500	<0.00500	<0.00500	<0.00500	<0.00500	<0.00500	<0.00500	<0.00500
SS-29-N 2 Ft	3/29/2024	2	<0.00500	<0.00500	<0.00500	<0.00500	<0.00500	<0.00500	<0.00500	<0.00500	<0.00500	<0.00500	<0.00500	<0.00500	<0.00500	<0.00500
SS-29-S 2 Ft	3/29/2024	2	<0.00500	<0.00500	<0.00500	<0.00500	<0.00500	<0.00500	<0.00500	<0.00500	<0.00500	<0.00500	<0.00500	<0.00500	<0.00500	<0.00500
FS-29 3 Ft	3/29/2024	3	<0.00500	<0.00500	<0.00500	<0.00500	<0.00500	<0.00500	<0.00500	<0.00500	<0.00500	<0.00500	<0.00500	<0.00500	<0.00500	<0.00500
SS-30-N 2 Ft	3/29/2024	2	<0.00500	<0.00500	<b>0.0117</b>	<0.00500	0.00618	<0.00500	0.0101	<0.00500	<0.00500	0.033	<0.00500	0.0115	<b>0.322</b>	<b>0.335</b>
SS-30-S 2 Ft	3/29/2024	2	<0.00500	<0.00500	<0.00500	<0.00500	<0.00500	<0.00500	<0.00500	<0.00500	<0.00500	<0.00500	<0.00500	<0.00500	<0.00500	<0.00500
FS-30 3 Ft	3/29/2024	3	<0.00500	<0.00500	<0.00500	<0.00500	<0.00500	<0.00500	<0.00500	<0.00500	<0.00500	<0.00500	<0.00500	<0.00500	<0.00500	<0.00500
FS-46 2 Ft	3/29/2024	2	<0.00500	<0.00500	<0.00500	<0.00500	<0.00500	<0.00500	<0.00500	<0.00500	<0.00500	<0.00500	<0.00500	<0.00500	<0.00500	<0.00500
FS-47 2 Ft	3/29/2024	2	<0.00500	<0.00500	<0.00500	<0.00500	<0.00500	<0.00500	<0.00500	<0.00500	<0.00500	<0.00500	<0.00500	<0.00500	<0.00500	<0.00500
FS-Release 6 Ft	4/1/2024	6	<0.00500	<0.00500	<0.00500	<0.00500	<0.00500	<0.00500	<0.00500	<0.00500	<0.00500	<0.00500	<0.00500	<0.00500	<0.00500	<0.00500
SS-30-N-2 3 Ft	4/2/2024	3	<0.00500	<0.00500	<0.00500	<0.00500	<0.00500	<0.00500	<0.00500	<0.00500	<0.00500	<0.00500	<0.00500	<0.00500	<0.00500	<0.00500
SS-41-2	4/2/2024	2	<0.00500	<0.00500	<0.00500	<0.00500	<0.00500	<0.00500	<0.00500	<0.00500	<0.00500	<0.00500	<0.00500	<0.00500	<0.00500	<0.00500
SS-42-2	4/2/2024	2	<0.00500	<0.00500	<0.00500	<0.00500	<0.00500	<0.00500	<0.00500	<0.00500	<0.00500	<0.00500	<0.00500	<0.00500	<0.00500	<0.00500
FS-41-2	4/2/2024	3.5	<0.00500	<0.00500	<0.00500	<0.00500	<0.00500	<0.00500	<0.00500	<0.00500	<0.00500	<0.00500	<0.00500	<0.00500	<0.00500	<0.00500
FS-44-2	4/2/2024	2.5	<0.00500	<0.00500	<0.00500	<0.00500	<0.00500	<0.00500	<0.00500	<0.00500	<0.00500	<0.00500	<0.00500	<0.00500	<0.00500	<0.00500
SS-28-N-2	4/5/2024	3	<0.00500	<0.00500	<0.00500	<0.00500	<0.00500	<0.00500	<0.00500	<0.00500	<0.00500	<0.00500	<0.00500	<0.00500	<0.00500	<0.00500
FS-48 1 Ft	4/5/2024	1	<0.00500	<0.00500	<0.00500	<0.00500	<0.00500	<0.00500	<0.00500	<0.00500	<0.00500	<0.00500	<0.00500	<0.00500	<0.00500	<0.00500
FS-49 2 Ft	4/5/2024	2	<0.00500	<0.00500	<0.00500	<0.00500	<0.00500	<0.00500	<0.00500	<0.00500	<0.00500	<0.00500	<0.00500	<0.00500	<0.00500	<0.00500
FS-50 2 Ft	4/5/2024	2	<0.00500	<0.00500	<0.00500	<0.00500	<0.00500	<0.00500	<0.00500	<0.00500	<0.00500	<0.00500	<0.00500	<0.00500	<0.00500	<0.00500
SS-46	4/5/2024	1	<0.00500	<0.00500	<0.00500	<0.00500	<0.00500	<0.00500	<0.00500	<0.00500	<0.00500	<0.00500	<0.00500	<0.00500	<0.00500	<0.00500
SS-47	4/5/2024	1.5	<0.00500	<0.00500	<0.00500	<0.00500	<0.00500	<0.00500	<0.00500	<0.00500	<0.00500	<0.00500	<0.00500	<0.00500	<0.00500	<0.00500
SS-48	4/5/2024	1	<0.00500	<0.00500	<0.00500	<0.00500	<0.00500	<0.00500	<0.00500	<0.00500	<0.00500	<0.00500	<0.00500	<0.00500	<0.00500	<0.00500
SS-49	4/5/2024	1	<0.00500	<0.00500	<0.00500	<0.00500	<0.00500	<0.00500	<0.00500	<0.00500	<0.00500	<0.00500	<0.00500	<0.00500	<0.00500	<0.00500
SS-50	4/5/2024	1	<0.00500	<0.00500	<0.00500	<0.00500	<0.00500	<0.00500	<0.00500	<0.00500	<0.00500	<0.00500	<0.00500	<0.00500	<0.00500	<0.00500
FS-51 0.5 Ft	4/5/2024	0.5	<0.00500	<0.00500	<0.00500	<0.00500	<0.00500	<0.00500	<0.00500	<0.00500	<0.00500	<0.00500	<0.00500	<0.00500	<0.00500	<0.00500
SS-51	4/9/2024	2.5	<0.020	<0.020	<0.005	<0.020	<0.020	<0.020	<0.020	<0.020	<0.020	<0.020	<0.020	<0.020	<0.002	<0.002
SS-52	4/9/2024	1.5	<0.020	<0.020	<0.005	<0.020	<0.020	<0.020	<0.020	<0.020	<0.020	<0.020	<0.020	<0.020	<0.002	<0.002
SS-53	4/9/2024	1.5	<0.020	<0.020	<0.005	<0.020	<0.020	<0.020	<0.020	<0.020	<0.020	<0.020	<0.020	<0.020	<0.002	<0.002
SS-54	4/9/2024	1.5	<0.020	<0.020	0.005	<0.020	<0.020	<0.020	<0.020	<0.020	<0.020	<0.020	<0.020	<0.020	<0.002	<0.002
FS-51	4/9/2024	2	<0.020	<0.020	<0.005	<0.020	<0.020	<0.020	<0.020	<0.020	<0.020	<0.020	<0.020	<0.020	<0.002	<0.002
FS-52	4/9/2024	2	<0.020	<0.020	<0.005	<0.020	<0.020	<0.020	<0.020	<0.020	<0.020	<0.020	<0.020	<0.020	<0.002	<0.002
SS-22-N-2	4/9/2024	2	<0.020	<0.020	<0.005	<0.020	<0.020	<0.020	<0.020	<0.020	<0.020	<0.020	<0.020	<0.020	<0.002	<0.002

- Bold values exceed the ECMC Table 915-1 limit(s)
- Red & blue highlighted soil analytical values indicate an exceedance of the referenced soil screening level (SSL)
- \* Indicates laboratory minimum detection limit in excess of SSL

NA - Not analyzed

  = Source material characterization sample, excavated and transported off site for disposal.  
  = Material excavated and transported off site for disposal.

**TABLE 3**  
**SUMMARY OF SOIL SUITABILITY FOR RECLAMATION**  
**PDC 69175**  
**RAINANCE FD OFFSITE PAD, WELD COUNTY, COLORADO**  
**REM #**

Sample ID	Sample Date	Depth (ft)	pH (Standard Units)	EC (mmhos/cm)	SAR (Standard Units)	Boron (mg/L)
ECMC Table 915-1 Soil Suitability Limits			6 - 8.3	<4	<6	2
Waste Char.	03/22/2024	Grab	<b>8.82</b>	0.143	0.682	<2.00
SS-01 1.5FT	03/22/2024	1.5	7.9	2.12	0.818	<2.00
SS-01 2.5FT	03/22/2024	2.5	7.88	3.82	1.41	<2.00
SS-04 1FT	03/22/2024	1	<b>8.44</b>	0.209	0.525	<2.00
SS-12 0.5FT	03/25/2024	0.5	<b>8.53</b>	0.155	0.118	<2.00
SS-13 2FT	03/25/2024	2	7.87	3.01	0.757	<2.00
SS-14 2FT	03/25/2024	2	8.07	1.04	0.106	<2.00
SS-15 2FT	03/25/2024	2	8.23	0.303	0.347	<2.00
SS-16 2FT	03/25/2024	2	7.99	1.55	1.64	<2.00
SS-17 3FT	03/25/2024	3	7.90	2.48	0.536	<2.00
FS-01 4 FT	3/26/2024	4	8.28	0.744	1.41	<2.00
FS-02 4 FT	3/26/2024	4	8.04	3	1.39	<2.00
SS-18 2 FT	3/26/2024	2	8.01	2.79	0.938	<2.00
SS-19 2 FT	3/26/2024	2	<b>8.57</b>	0.255	0.213	<2.00
SS-20 2 FT	3/26/2024	2	8.25	0.683	0.135	<2.00
SS-21 3 FT	3/26/2024	3	8.2	1.07	0.967	<2.00
SS-22-N 1.5 Ft	3/28/2024	1.5	<b>8.52</b>	0.951	4.22	<2.00
SS-22-S 1.5 Ft	3/28/2024	1.5	<b>8.34</b>	1	0.239	<2.00
FS-22 2 Ft	3/28/2024	2	<b>8.45</b>	0.888	0.252	<2.00
SS-23-N 1.5 Ft	3/28/2024	3	8.24	1.1	0.263	<2.00
SS-23-S 1,5 Ft	3/28/2024	3	<b>8.54</b>	0.327	0.335	<2.00
FS-23 2 Ft	3/28/2024	3	<b>8.37</b>	1.03	0.25	<2.00
SS-24-N 2 Ft	3/28/2024	2.5	<b>8.39</b>	0.869	0.248	<2.00
SS-24-S 2 Ft	3/28/2024	2.5	<b>8.43</b>	1.32	1.55	<2.00
FS-24 3 Ft	3/28/2024	3	8.26	1.3	0.767	<2.00
SS-25 -N 3 Ft	3/28/2024	3	<b>8.55</b>	1.16	1.6	<2.00
SS-25-S 3 Ft	3/28/2024	3	<b>8.43</b>	1.18	1.33	<2.00
FS-25 4 Ft	3/28/2024	4	<b>8.47</b>	1.38	1.03	<2.00
SS-26-N 3 Ft	3/28/2024	3	8.26	1.68	0.315	<2.00
SS-26-S 3 Ft	3/28/2024	3	<b>8.56</b>	0.888	0.54	<2.00
FS-26 4 Ft	3/28/2024	4	<b>8.38</b>	1.07	0.165	<2.00
SS-27-N 2 Ft	3/28/2024	2	<b>8.36</b>	1.07	0.208	<2.00
SS-27-S 2 Ft	3/28/2024	2	<b>8.51</b>	0.832	0.373	<2.00

Sample ID	Sample Date	Depth (ft)	pH (Standard Units)	EC (mmhos/cm)	SAR (Standard Units)	Boron (mg/L)
ECMC Table 915-1 Soil Suitability Limits			6 - 8.3	<4	<6	2
FS-27 3 Ft	3/28/2024	3	8.62	0.547	0.338	<2.00
SS-28-N 2.5 Ft	3/28/2024	2.5	8.21	0.298	0.114	<2.00
SS-28-S 2.5 Ft	3/28/2024	2.5	8.42	0.456	0.51	<2.00
FS-28 3 Ft	3/28/2024	3	8.41	1.21	0.125	<2.00
SS-40 3 Ft	3/29/2024	3	7.91	2.6	0.746	<2.00
SS-41 2 Ft	3/29/2024	2	8.04	1.76	0.769	<2.00
SS-42 2 Ft	3/29/2024	2	7.83	1.48	0.474	<2.00
SS-43 2 Ft	3/29/2024	2	8.00	2.82	1.06	<2.00
SS-44 2 Ft	3/29/2024	2	8.09	1.31	0.39	<2.00
SS-45 2 Ft	3/29/2024	2	8.15	0.873	0.779	<2.00
FS-40 3 Ft	3/29/2024	3	7.92	4.28	1.61	<2.00
FS-41 3 Ft	3/29/2024	3	8.05	2.00	0.803	<2.00
FS-42 2 Ft	3/29/2024	2	7.95	2.68	1.55	<2.00
FS-43 3 Ft	3/29/2024	3	8.31	0.881	1.92	<2.00
FS-44 2 Ft	3/29/2024	2	8.02	2.71	2.46	<2.00
FS-45 2 Ft	3/29/2024	2	7.9	3.59	1.65	<2.00
SS-29-N 2 Ft	3/29/2024	2	8.11	1.39	0.925	<2.00
SS-29-S 2 Ft	3/29/2024	2	8.35	0.384	0.33	<2.00
FS-29 3 Ft	3/29/2024	3	7.97	2.02	0.621	<2.00
SS-30-N 2 Ft	3/29/2024	2	8.29	0.222	0.174	<2.00
SS-30-S 2 Ft	3/29/2024	2	8.22	0.489	0.825	<2.00
FS-30 3 Ft	3/29/2024	3	8.16	0.633	0.28	<2.00
FS-46 2 Ft	3/29/2024	2	8.16	1.18	1.09	<2.00
FS-47 2 Ft	3/29/2024	2	7.96	2.54	1.06	<2.00
FS-Release 6 Ft	4/1/2024	6	7.94	3.82	1.15	<2.00
SS-30-N-2 3 Ft	4/2/2024	3	8.33	0.577	0.997	<2.00
SS-41-2	4/2/2024	2	7.95	3.96	1.27	<2.00
SS-42-2	4/2/2024	2	8.16	1.19	0.565	<2.00
FS-41-2	4/2/2024	3.5	7.88	4.54	0.797	<2.00
FS-44-2	4/2/2024	2.5	8.21	2.09	1.76	<2.00
SS-28-N-2	4/5/2024	3	8.21	0.83	0.392	<2.00
FS-48 1 Ft	4/5/2024	1	8.12	1.84	1.47	<2.00
FS-49 2 Ft	4/5/2024	2	8.24	1.66	1.27	<2.00
FS-50 2 Ft	4/5/2024	2	8.26	1.39	0.834	<2.00
SS-46	4/5/2024	1	8.12	1.24	0.794	<2.00
SS-47	4/5/2024	1.5	8.2	1.53	1.65	<2.00
SS-48	4/5/2024	1	8.41	1.04	1.83	<2.00
SS-49	4/5/2024	1	8.55	0.708	0.92	<2.00

Sample ID	Sample Date	Depth (ft)	pH (Standard Units)	EC (mmhos/cm)	SAR (Standard Units)	Boron (mg/L)
ECMC Table 915-1 Soil Suitability Limits			6 - 8.3	<4	<6	2
SS-50	4/5/2024	1	<b>8.62</b>	0.692	1.62	<2.00
FS-51 0.5 Ft	4/5/2024	0.5	<b>8.53</b>	0.252	0.304	<2.00
SS-51	4/9/2024	2.5	8.10	2.53	1.15	0.290
SS-52	4/9/2024	1.5	7.98	2.38	0.748	0.347
SS-53	4/9/2024	1.5	8.11	1.88	1.03	0.343
SS-54	4/9/2024	1.5	8.11	1.99	0.220	0.331
FS-51	4/9/2024	2	8.12	2.89	1.29	0.327
FS-52	4/9/2024	2	8.13	2.99	0.869	0.220
SS-22-N-2	4/9/2024	2	8.15	2.59	1.52	0.321
BG-SE-OFF 2 Ft	9/5/2024	2	7.87	3.70	0.931	<2.00
BG-NW-OFF 2 Ft	9/5/2024	2	7.84	<b>4.47</b>	2.57	<2.00
BG-W-OFF 2 Ft	9/5/2024	2	7.66	<b>4.25</b>	5.75	<2.00
BG-E-OFF 2 Ft	9/5/2024	2	<b>8.48</b>	0.204	0.152	<2.00
BG-NW-ON 2 Ft	9/5/2024	2	7.96	1.88	1.42	<2.00
BG-SW-ON 2 Ft	9/5/2024	2	7.91	<b>4.52</b>	1.86	<2.00
Maximum Root Background Concentration (0 - 3 ft)			<b>8.48</b>	<b>4.52</b>	5.75	<2.00
Average Root Background Concentration (0 - 3 ft)			7.950	3.17	2.11	<2.00
Maximum Background Concentration						
Average Background Concentration						

1. Bold faced values exceed the ECMC Table 915-1 limit(s)

2. Blue highlighted soil analytical values indicate a regulatory exceedance

NA - Not analyzed

  = Source material characterization sample, excavated and transported off site for disposal.

  = Material excavated and transported off site for disposal.

TABLE 4  
SUMMARY OF METALS IN SOIL CHEMISTRY DATA  
PDC 69175  
RAINDANCE FD OFFSITE PAD, WELD COUNTY, COLORADO  
REM #

Sample ID	Sample Date	Depth (ft)	Arsenic (mg/kg)	Barium (mg/kg)	Cadmium (mg/kg)	Chromium (VI) (mg/kg)	Copper (mg/kg)	Lead (mg/kg)	Nickel (mg/kg)	Selenium (mg/kg)	Silver (mg/kg)	Zinc (mg/kg)
ECMC Table 915-1 Limits (Residential SSL)			0.68	15000	71	0.3	3100	400	1500	390	390	23000
ECMC Table 915-1 Limits (Protection of Groundwater SSL)			0.29	82	0.38	0.00067	46	14	26	0.26	0.8	370
Waste Char.	03/22/2024	Grab	2.92	40.7	<0.200	<0.30	4.71	4.65	4.52	<0.260	0.0262	18.7
SS-01 1.5FT	03/22/2024	1.5	5.83	16.5	<0.200	<0.30	5.01	10.6	7.2	<0.260	0.0799	32.1
SS-01 2.5FT	03/22/2024	2.5	8.63	51.1	0.269	<0.30	8.03	16.7	8.25	0.273	0.0986	35.8
SS-04 1FT	03/22/2024	1	9.08	96.1	0.322	<0.30	8.59	18.6	9.1	0.365	0.105	37.7
SS-12 0.5FT	03/25/2024	0.5	6.80	103	0.316	<0.30	4.97	6.42	4.39	1.1	0.0282	19
SS-13 2FT	03/25/2024	2	7.99	45.7	0.21	<0.30	6.74	12.9	8.86	0.408	0.0813	33.5
SS-14 2FT	03/25/2024	2	3.93	56.0	<0.200	<0.30	5.63	6.82	5.05	<0.260	0.0375	21.1
SS-15 2FT	03/25/2024	2	7.00	72.1	0.237	<0.30	7.33	13.6	7.74	0.342	0.0729	32.6
SS-16 2FT	03/25/2024	2	6.41	81.4	0.218	<0.30	7.47	12.4	7.84	0.29	0.0722	31.2
SS-17 3FT	03/25/2024	3	8.31	48.3	0.202	<0.30	7.24	13.7	7.71	0.495	0.0752	32.4
FS-01 4 FT	3/26/2024	4	4.63	78.7	<0.200	<0.30	5.39	8.44	7.37	<0.260	0.0379	28.5
FS-02 4 FT	3/26/2024	4	7.80	80.7	0.215	<0.30	7.96	8.36	7.39	<0.234	0.0296	37.8
SS-18 2 FT	3/26/2024	2	3.22	74.3	<0.200	<0.30	3.77	5.93	5.57	<0.260	<0.0200	20
SS-19 2 FT	3/26/2024	2	3.40	37.9	<0.200	<0.30	6.38	7.92	4.9	<0.260	0.0367	36.5
SS-20 2 FT	3/26/2024	2	4.43	59.6	<0.200	<0.30	9.37	7.62	9.27	<0.260	0.0441	35.6
SS-21 3 FT	3/26/2024	3	7.03	72.3	0.231	<0.30	15.8	13.9	16.1	0.282	0.0826	64.4
SS-22-N 1.5 Ft	3/28/2024	1.5	1.81	31.8	<0.200	<0.30	5.66	3.53	3.37	<0.260	<0.0200	13.5
SS-22-S 1.5 Ft	3/28/2024	1.5	6.14	46.9	0.216	<0.30	11.7	11.4	6.42	0.254	0.0723	42.1
FS-22 2 Ft	3/28/2024	2	6.04	42.9	0.211	<0.30	11.1	11.7	6.88	<0.260	0.0676	44.1
SS-23-N 1.5 Ft	3/28/2024	3	6.75	51.2	0.226	<0.30	12.9	12.5	6.96	0.288	0.0738	49
SS-23-S 1.5 Ft	3/28/2024	3	5.98	49.8	0.205	<0.30	11.7	11.3	6.85	<0.260	0.0673	43.6
FS-23 2 Ft	3/28/2024	3	6.58	50.9	0.221	<0.30	12.5	12.1	6.88	0.262	0.0702	45.5
SS-24-N 2 Ft	3/28/2024	2.5	7.18	54	0.215	<0.30	13.4	12.7	7	0.342	0.0726	49.2
SS-24-S 2 Ft	3/28/2024	2.5	7.95	39.1	0.223	<0.30	14.7	13.7	7.21	0.279	0.0929	54.6
FS-24 3 Ft	3/28/2024	3	7.97	38.3	0.222	<0.30	11.8	12.5	7.57	0.295	0.0818	48.3
SS-25 -N 3 Ft	3/28/2024	3	6.86	59.4	0.225	<0.30	12.4	12.4	7.06	0.373	0.0736	46.4
SS-25-S 3 Ft	3/28/2024	3	7.03	38.4	<0.200	<0.30	11.3	11.5	7.08	<0.260	0.0688	46.7
FS-25 4 Ft	3/28/2024	4	7.12	53.7	0.221	<0.30	12.4	12.7	6.88	0.343	0.0773	47.2
SS-26-N 3 Ft	3/28/2024	3	6.71	49.6	0.225	<0.30	12.4	12	6.89	0.325	0.0707	45.7
SS-26-S 3 Ft	3/28/2024	3	6.93	39.7	0.214	<0.30	10.9	11.7	7.43	0.277	0.0747	47.2

Sample ID	Sample Date	Depth (ft)	Arsenic (mg/kg)	Barium (mg/kg)	Cadmium (mg/kg)	Chromium (VI) (mg/kg)	Copper (mg/kg)	Lead (mg/kg)	Nickel (mg/kg)	Selenium (mg/kg)	Silver (mg/kg)	Zinc (mg/kg)
ECMC Table 915-1 Limits (Residential SSL)			0.68	15000	71	0.3	3100	400	1500	390	390	23000
ECMC Table 915-1 Limits (Protection of Groundwater SSL)			0.29	82	0.38	0.00067	46	14	26	0.26	0.8	370
FS-26 4 Ft	3/28/2024	4	7.03	52.8	0.224	<0.30	12.9	12.6	6.93	0.352	0.0683	47.8
SS-27-N 2 Ft	3/28/2024	2	7.25	49.9	0.216	<0.30	11.3	11.8	7.01	0.299	0.0737	46.1
SS-27-S 2 Ft	3/28/2024	2	7.07	54.7	0.224	<0.30	13.3	12.4	6.8	0.27	0.0796	48.4
FS-27 3 Ft	3/28/2024	3	8.03	37.5	0.218	<0.30	12.6	13.2	7.15	0.3	0.084	51.9
SS-28-N 2.5 Ft	3/28/2024	2.5	6.95	57.5	0.231	<0.30	13.5	12.9	7.22	0.292	0.0731	49.8
SS-28-S 2.5 Ft	3/28/2024	2.5	6.58	61.2	0.225	<0.30	13.3	12.8	6.82	<0.260	0.0752	47.3
FS-28 3 Ft	3/28/2024	3	6.27	66.7	0.208	<0.30	6.92	12	6.99	<0.260	0.0977	51
SS-40 3 Ft	3/29/2024	3	7.14	61.1	0.243	<0.30	13.8	12.4	14.7	<0.260	0.076	59.8
SS-41 2 Ft	3/29/2024	2	7.03	24.5	<0.200	<0.30	9.79	10.6	13	<0.260	0.0785	55.8
SS-42 2 Ft	3/29/2024	2	5.61	18.7	<0.200	<0.30	8.4	9.94	11.6	<0.260	0.0748	50.2
SS-43 2 Ft	3/29/2024	2	7.25	74	0.267	<0.30	14.7	12.9	16.4	0.266	0.076	63.4
SS-44 2 Ft	3/29/2024	2	6.15	67.3	0.239	<0.30	12.9	10.9	19.1	<0.260	0.0644	53
SS-45 2 Ft	3/29/2024	2	6.61	95.4	0.229	<0.30	14	12	15.2	<0.234	0.0677	58.6
FS-40 3 Ft	3/29/2024	3	7.23	46.9	0.227	<0.30	13.9	12.5	14.5	<0.260	0.0732	61
FS-41 3 Ft	3/29/2024	3	6.83	35.1	<0.180	<0.30	9.45	10.4	12.6	<0.234	0.0693	51.1
FS-42 2 Ft	3/29/2024	2	7.68	39.3	0.224	<0.30	15.2	13.6	15	<0.260	0.0835	65.1
FS-43 3 Ft	3/29/2024	3	6.63	76.2	0.183	<0.30	11.5	10.3	13.3	0.326	0.0464	51.5
FS-44 2 Ft	3/29/2024	2	6.66	71.1	0.236	<0.30	14.1	12.1	14.9	0.321	0.0725	58.4
FS-45 2 Ft	3/29/2024	2	7.44	38.2	0.213	<0.30	12.9	12.4	13.9	0.283	0.0741	58.6
SS-29-N 2 Ft	3/29/2024	2	6.98	57.4	0.205	<0.30	14.1	12.3	14.6	<0.260	0.0713	58.6
SS-29-S 2 Ft	3/29/2024	2	6.6	62	0.204	<0.30	13.7	11.8	14	<0.260	0.0715	55.8
FS-29 3 Ft	3/29/2024	3	6.89	72.1	0.233	<0.30	14.5	12	14.8	<0.260	0.0699	59.3
SS-30-N 2 Ft	3/29/2024	2	4.58	202	0.315	<0.30	13.9	10	10.8	<0.260	0.0403	33
SS-30-S 2 Ft	3/29/2024	2	6.31	64	<0.200	<0.30	12.2	11.2	13.5	<0.260	0.0646	52.1
FS-30 3 Ft	3/29/2024	3	3.13	186	<0.200	<0.30	7.86	6.44	7.36	<0.260	0.0344	25.7
FS-46 2 Ft	3/29/2024	2	7.38	45.2	0.206	<0.30	12.8	12.2	14.2	0.239	0.0767	58.1
FS-47 2 Ft	3/29/2024	2	8.19	40.7	0.223	<0.30	14.8	13.6	15	0.31	0.0838	64.7
FS-Release 6 Ft	4/1/2024	6	4.90	23.1	<0.200	<0.30	3.66	7.98	4.84	<0.260	0.0508	20
SS-30-N-2 3 Ft	4/2/2024	3	3.35	300	0.225	<0.30	8.96	7.9	5.07	<0.260	0.0624	27.1
SS-41-2	4/2/2024	2	6.01	28	<0.200	<0.30	10.2	10.9	6.51	<0.260	0.0961	45.4
SS-42-2	4/2/2024	2	5.16	15.5	<0.181	<0.30	7.91	9.64	6.12	<0.236	0.0926	40.8
FS-41-2	4/2/2024	3.5	7.08	44	0.258	<0.30	13.9	13.3	7.09	<0.260	0.0966	51.3
FS-44-2	4/2/2024	2.5	6.66	66.4	0.261	<0.30	13.2	12.4	7	0.33	0.0942	47.4
SS-28-N-2	4/5/2024	3	6.74	56.9	0.214	<0.30	12.9	12.5	14.1	<0.260	0.073	56.8
FS-48 1 Ft	4/5/2024	1	7.35	35.7	0.221	<0.30	12.6	13	13.8	0.278	0.0873	58.7

Sample ID	Sample Date	Depth (ft)	Arsenic (mg/kg)	Barium (mg/kg)	Cadmium (mg/kg)	Chromium (VI) (mg/kg)	Copper (mg/kg)	Lead (mg/kg)	Nickel (mg/kg)	Selenium (mg/kg)	Silver (mg/kg)	Zinc (mg/kg)
ECMC Table 915-1 Limits (Residential SSL)			0.68	15000	71	0.3	3100	400	1500	390	390	23000
ECMC Table 915-1 Limits (Protection of Groundwater SSL)			0.29	82	0.38	0.00067	46	14	26	0.26	0.8	370
FS-49 2 Ft	4/5/2024	2	7.51	50.4	0.22	<0.30	13	12.7	13.9	0.3	0.0805	58
FS-50 2 Ft	4/5/2024	2	7.14	36.3	0.218	<0.30	12.3	12.5	13.2	0.268	0.0772	56.1
SS-46	4/5/2024	1	6.04	46	0.212	<0.30	10.8	11	13.4	<0.260	0.0726	51.4
SS-47	4/5/2024	1.5	6.22	78.4	0.248	<0.30	13.6	12.1	14.9	<0.236	0.0774	56.2
SS-48	4/5/2024	1	6.22	75.1	0.25	<0.30	12.9	11.9	14.3	<0.260	0.0715	54.2
SS-49	4/5/2024	1	6.22	88.8	0.262	<0.30	14.1	12.3	15.5	<0.260	0.0753	57.3
SS-50	4/5/2024	1	6.20	69.2	0.237	<0.30	12.3	12	13.8	<0.260	0.0712	53.2
FS-51 0.5 Ft	4/5/2024	0.5	5.96	34	0.215	<0.30	9.96	10.8	11.4	<0.260	0.063	46.9
SS-51	4/9/2024	2.5	6.89	71.0	0.101	<0.177	12.6	12.2	15.7	0.333	0.0878	59.5
SS-52	4/9/2024	1.5	6.40	38.3	0.0960	<0.120	9.62	11.2	13.7	0.277	0.101	54.8
SS-53	4/9/2024	1.5	5.90	86.3	0.109	<0.187	13.0	11.6	14.5	0.234	<0.0894	54.7
SS-54	4/9/2024	1.5	6.25	93.3	0.124	<0.126	13.8	11.8	15.2	0.421	0.0864	57.3
FS-51	4/9/2024	2	7.31	82.2	0.100	<0.141	12.9	12.7	14.6	0.409	0.0968	59.4
FS-52	4/9/2024	2	7.13	60.7	<0.0968	<0.174	14.2	14.1	14.8	0.394	<0.0968	62.1
SS-22-N-2	4/9/2024	2	7.12	69.4	0.0957	<0.158	13.3	12.6	14.8	0.337	0.0983	60.8
BG-SE-OFF 2 Ft	9/5/2024	2	5.90	59.7	<0.200	<0.30	11.9	10.9	12.8	<0.260	0.0551	50.3
BG-NW-OFF 2 Ft	9/5/2024	2	6.05	24.1	<0.200	<0.30	10.9	10.7	11.2	<0.260	0.056	48.7
BG-W-OFF 2 Ft	9/5/2024	2	6.11	18.7	<0.200	<0.30	8.71	9.83	10.5	0.334	0.0582	44.9
BG-E-OFF 2 Ft	9/5/2024	2	5.98	86.5	<0.200	<0.30	12.2	10.3	14.1	<0.260	0.0484	49.6
BG-NW-ON 2 Ft	9/5/2024	2	6.04	25.3	<0.200	<0.30	9.59	10.7	13.3	0.370	0.0626	50
BG-SW-ON 2 Ft	9/5/2024	2	7.45	33.4	<0.200	<0.30	11.6	12.1	12.8	0.385	0.0649	53.1

1. Bold values exceed the ECMC Table 915-1 limit(s)

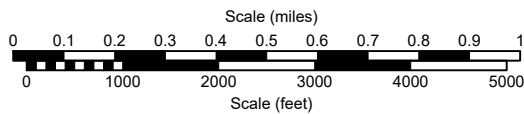
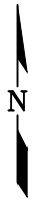
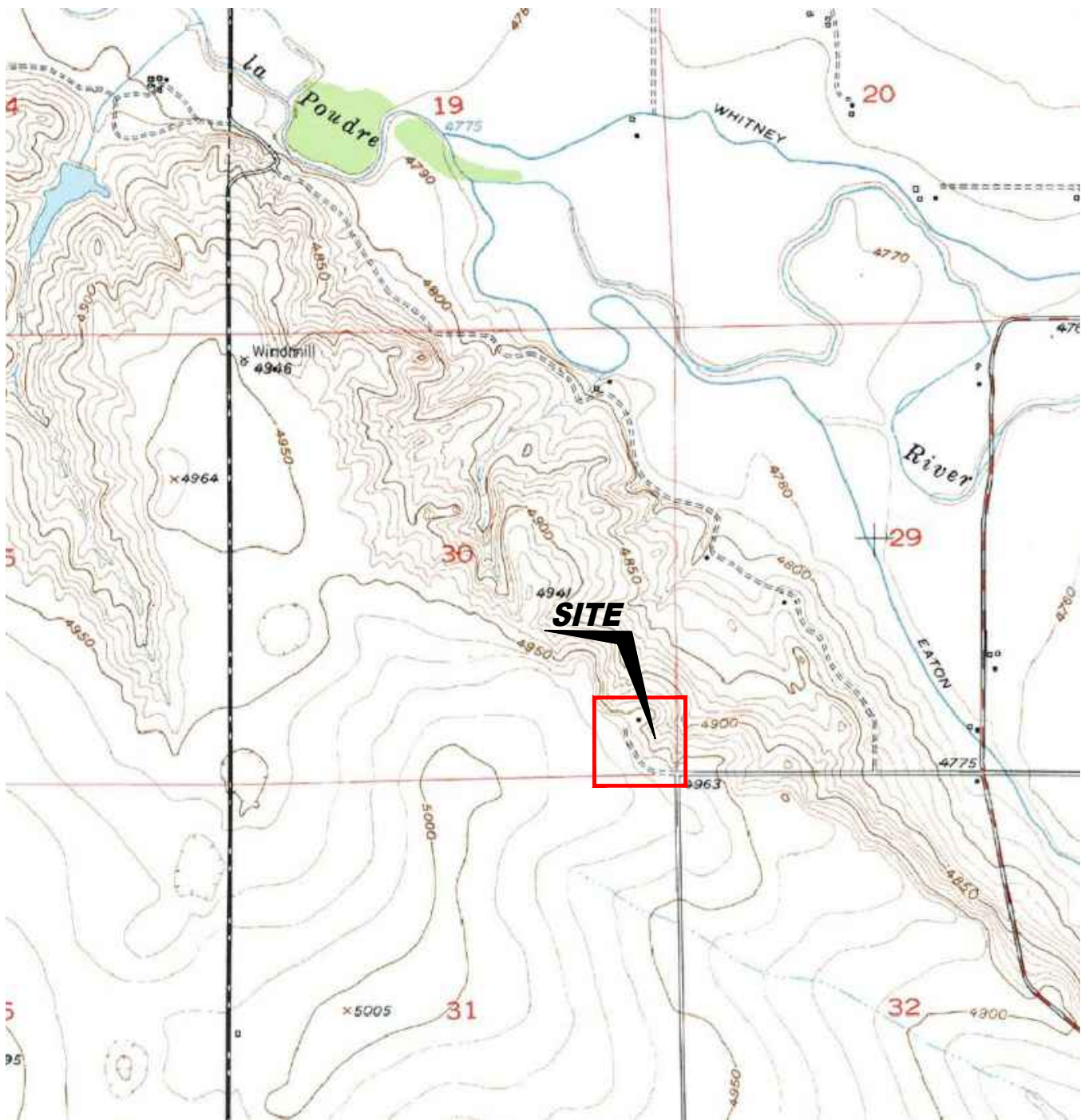
2. Red & blue highlighted soil analytical values indicate an exceedance of the referenced soil screening level (SSL)

\* Indicates laboratory minimum detection limit in excess of SSL

NA - Not analyzed

  = Source material characterization sample, excavated and transported off site for disposal.

  = Material excavated and transported off site for disposal.



USGS 7.5 MINUTE SERIES (TOPOGRAPHIC)

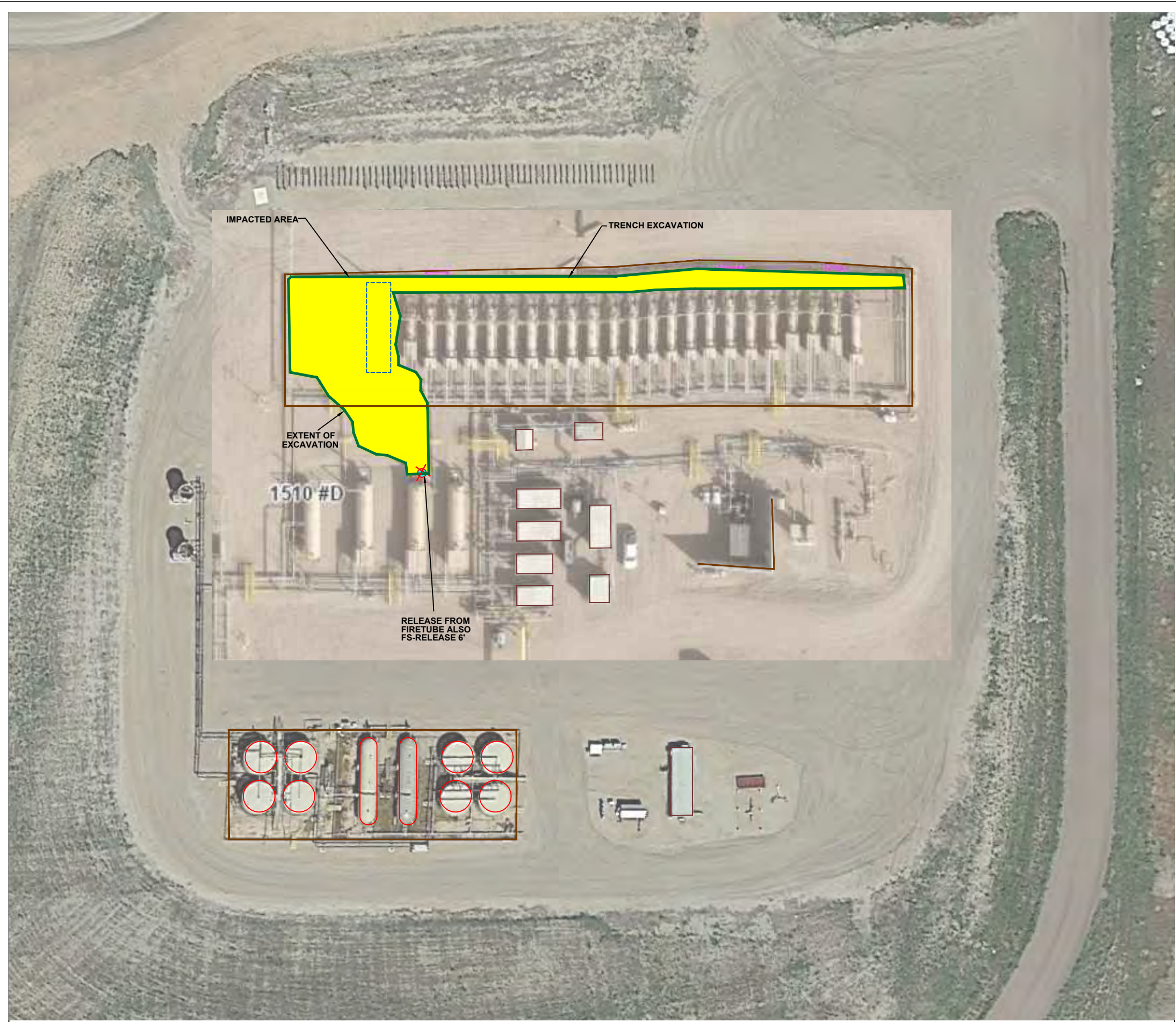
Figure 1

**SITE LOCATION MAP**

**PDC ENERGY INC**  
**Raindance FD Off-site Tank Pad**  
 SESE Sec. 30, T6N, R67W, 6th PM  
 Weld County, Colorado  
 40.451465°, -104.928371°

Project # <b>C024-066</b>	API #	Facility # <b>451100</b>
Date <b>6/24/24</b>	Remediation #	Filename <b>24066T</b>





**LEGEND**

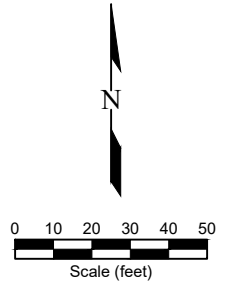
- ★ POINT OF RELEASE
- ABOVE GROUND STORAGE TANK
- BUILDING
- FORMER FACILITY
- IMPACTED AREA
- EXTENT OF EXCAVATION
- FENCE LINE
- CONTAINMENT BERM
- CONTAINMENT WALL

  NOT ANALYZED

SAMPLE ID	DEPTH	SAMPLE ID	DEPTH	SAMPLE ID	DEPTH
ACE	<0.00500	ACENAPHTHENE (mg/kg)		SS-41 2 FT	
Ant	<0.00500	ANTHRACENE (mg/kg)		3/25/2024	
BaA	<0.00500	BENZO (A) ANTHRACENE (mg/kg)		2	
BaP	<0.00500	BENZO (A) PYRENE (mg/kg)		B	<0.0020
BBF	<0.00500	BENZO (B) FLUORANTHENE (mg/kg)		F	<0.0050
BBF	<0.00500	BENZO (K) FLUORANTHENE (mg/kg)		G	<0.0050
Chr	<0.00500	CHRYSENE (mg/kg)		X	<0.010
DBahAnt	<0.00500	DIBENZ (A,H) ANTHRACENE (mg/kg)		124TMB	<0.0050
FLU	<0.00500	FLUORANTHENE (mg/kg)		135TMB	<0.0050
FL	<0.00500	FLUORENE (mg/kg)		N	<0.0038
I123aPY	<0.00500	INDENO (1,2,3-CD) PYRENE (mg/kg)		G	<0.50
PY	<0.00500	PYRENE (mg/kg)		D	<50
1MN	<0.00500	1-METHYLNAPHTHALENE (mg/kg)		G	<50
2MN	<0.00500	2-METHYLNAPHTHALENE (mg/kg)			

SAMPLE	DEPTH	SAMPLE ID	DEPTH
As	<0.01	ARSENIC (mg/kg)	
Ba	<0.01	BARIUM (mg/kg)	
CD	<0.01	CADMIUM (mg/kg)	
CR(VI)	<0.05	CHROMIUM (mg/kg)	
CU	<0.01	COPPER (mg/kg)	
PB	<0.05	LEAD (mg/kg)	
Ni	<0.05	NICKEL (mg/kg)	
SE	<0.5	SELENIUM (mg/kg)	
AG	<0.05	SILVER (mg/kg)	
Z	<0.05	ZINC (mg/kg)	

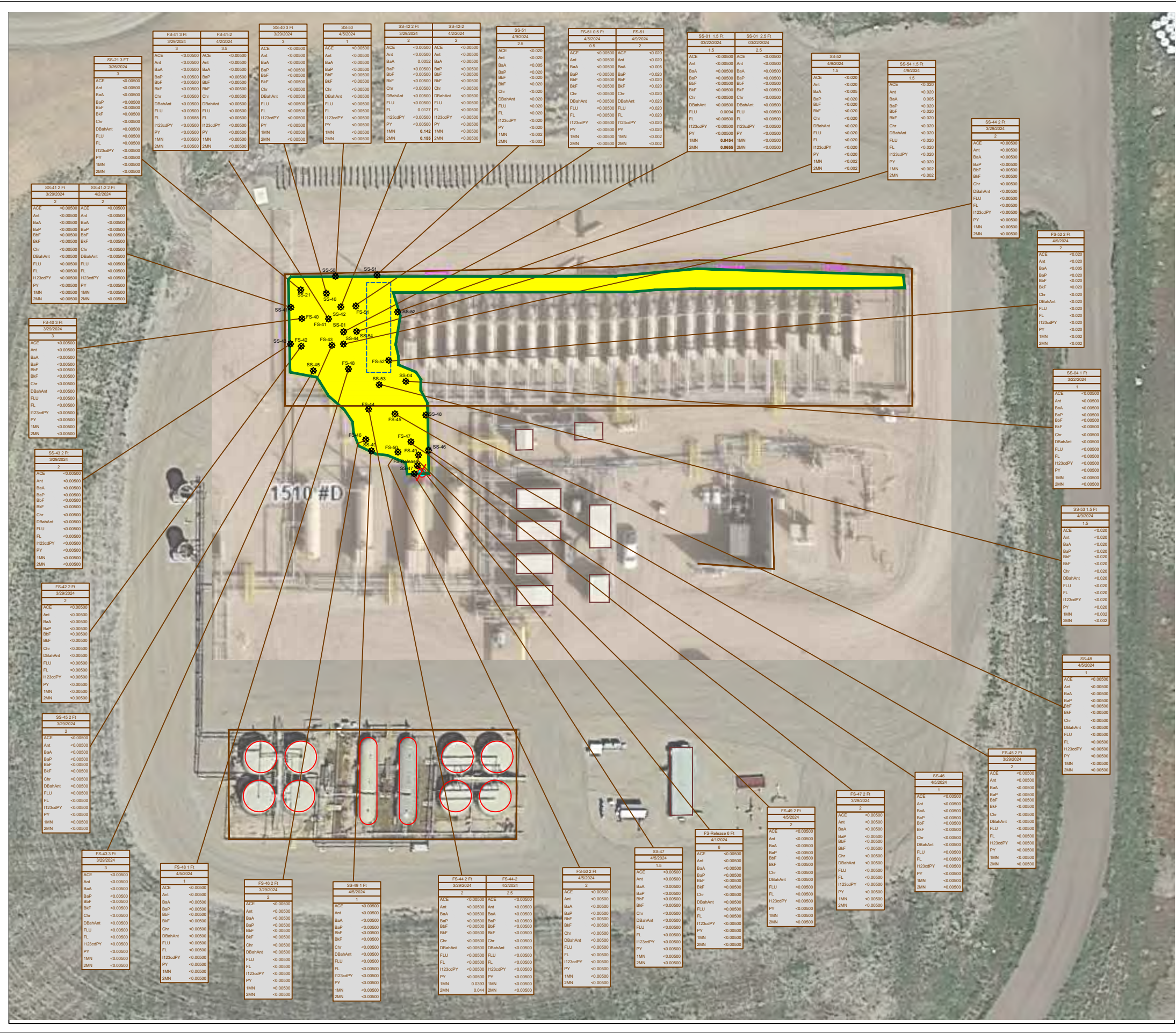
SAMPLE	DEPTH	SAMPLE ID	DEPTH
pH	<5.00	SAR (units)	
EC	7.00	pH (pH units)	
SAR	<1	EC (mmhos/cm)	
B	<5	BORON (mg/L)	



**Figure 2  
SITE MAP**

**PDC ENERGY INC**  
**Raindance FD Off-site Tank Pad**  
 SESE Sec. 30, T6N, R67W, 6th PM  
 Weld County, Colorado  
 40.451465°, -104.928371°

Project No. <b>C024-066</b>	Facility #	Initial Spill/Release Report Doc# <b>451100</b>	
Date <b>6/24/24</b>	Remediation #	Filename <b>24066Q2</b>	



### LEGEND

- POINT OF RELEASE
- SOIL SAMPLE LOCATION
- ABOVE GROUND STORAGE TANK
- BUILDING
- FORMER FACILITY
- IMPACTED AREA
- EXTENT OF EXCAVATION
- FENCE LINE
- CONTAINMENT BERM
- CONTAINMENT WALL

SAMPLE ID	DATE SAMPLED	DEPTH (ft)	SAMPLE ID	DATE SAMPLED	DEPTH (ft)
ACE	<0.0050	<0.0050	ANTHRACTHENE (mg/kg)		
Ant	<0.0050	<0.0050	BENZO (A) ANTHRACENE (mg/kg)		
BaA	<0.0050	<0.0050	BENZO (B) FLUORANTHENE (mg/kg)		
BaP	<0.0050	<0.0050	CHRYSENE (mg/kg)		
BbF	<0.0050	<0.0050	DIBENZ (A,H) ANTHRACENE (mg/kg)		
Ch	<0.0050	<0.0050	FLUORANTHENE (mg/kg)		
DBahAnt	<0.0050	<0.0050	FLUORENE (mg/kg)		
FLU	<0.0050	<0.0050	INDENO (1,2,3-CD) PYRENE (mg/kg)		
H23cPY	<0.0050	<0.0050	PYRENE (mg/kg)		
1MN	<0.0050	<0.0050	2-METHYLNAPHTHALENE (mg/kg)		
2MN	<0.0050	<0.0050	2-METHYLNAPHTHALENE (mg/kg)		

SAMPLE ID	DATE SAMPLED	DEPTH (ft)	SAMPLE ID	DATE SAMPLED	DEPTH (ft)
As	<0.01	<0.01	ARSENIC (mg/kg)		
Ba	<0.01	<0.01	BARIUM (mg/kg)		
Ca	<0.01	<0.01	CADMIUM (mg/kg)		
Cr(VI)	<0.05	<0.05	CHROMIUM (mg/kg)		
Cu	<0.01	<0.01	COPPER (mg/kg)		
Pb	<0.01	<0.01	LEAD (mg/kg)		
Ni	<0.05	<0.05	NICKEL (mg/kg)		
Se	<0.5	<0.5	SELENIUM (mg/kg)		
Ag	<0.05	<0.05	SILVER (mg/kg)		
Z	<0.05	<0.05	ZINC (mg/kg)		

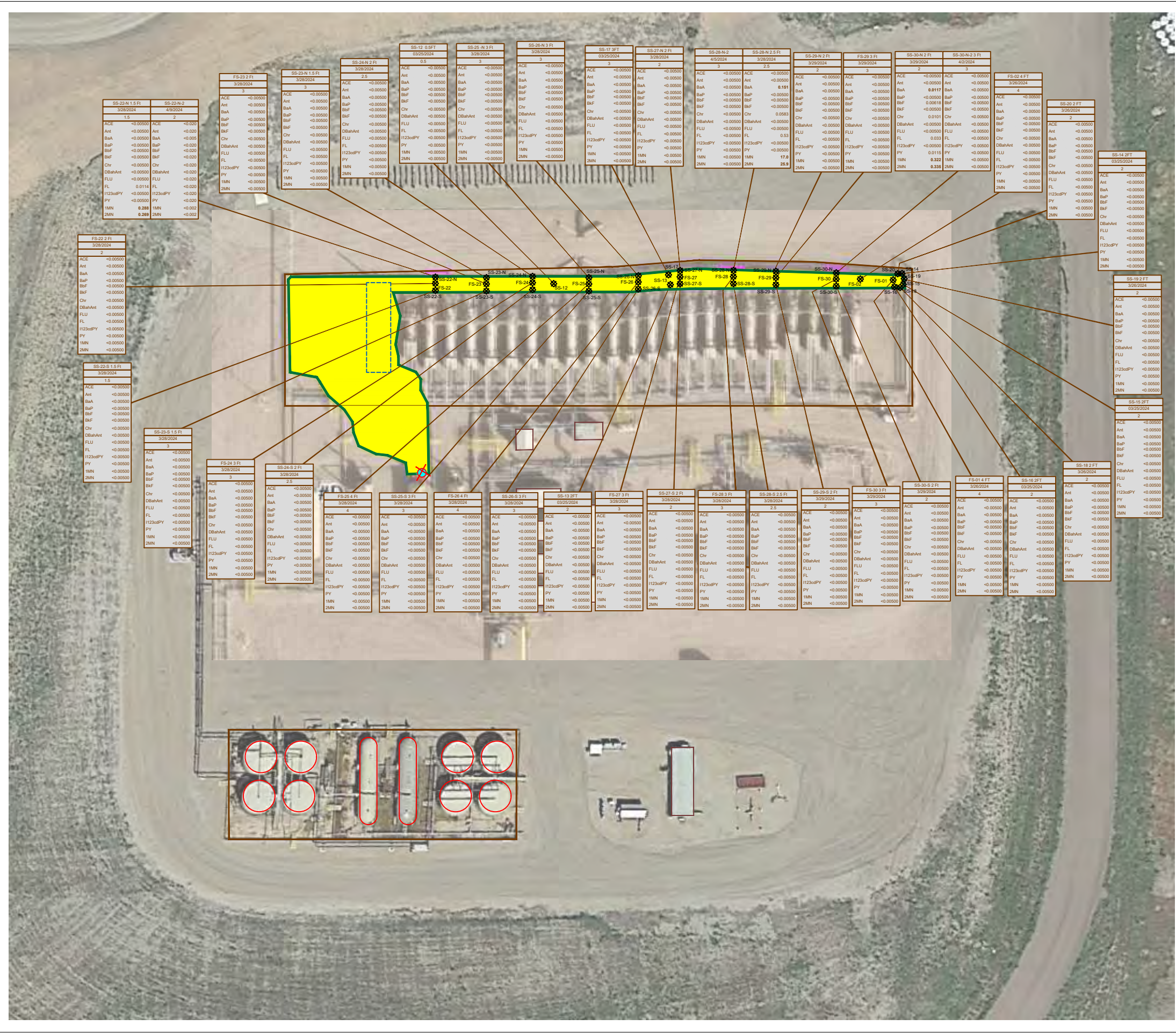
Scale (feet)

0 10 20 30 40 50

Scale (feet)

Figure 3  
PAH SOIL CHEMISTRY MAP  
PDC ENERGY INC  
Raindance FD Off-site Tank Pad  
SESE Sec. 30, T6N, R67W, 6th PM  
Weld County, Colorado  
40.451465° , -104.928371°

Project No. <b>C024-066</b>	Facility #	Initial Spill/Release Report Doc# <b>451100</b>	
Date <b>6/24/24</b>	Remediation #	Filename <b>24066Q2</b>	



### LEGEND

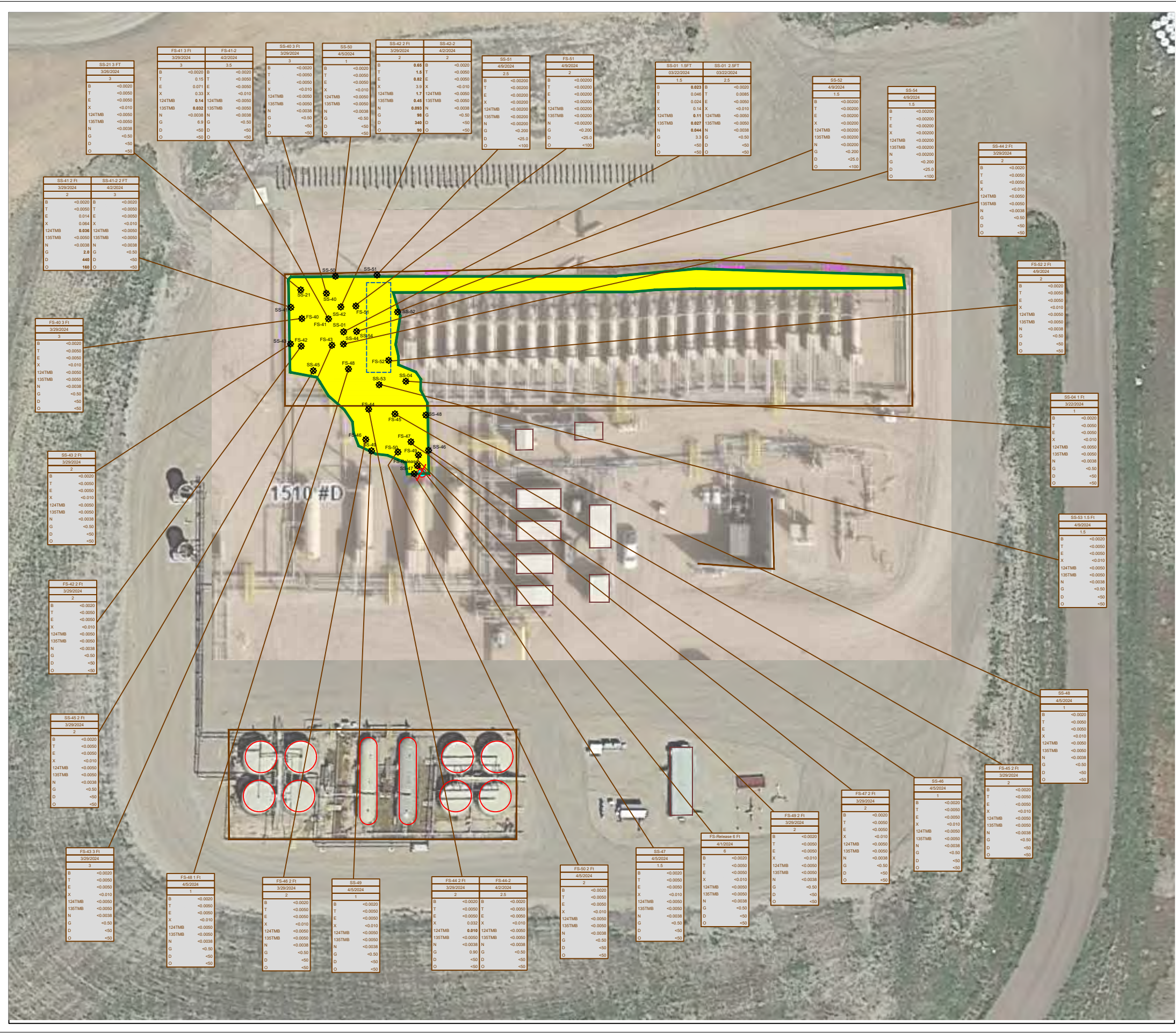
- POINT OF RELEASE
- SOIL SAMPLE LOCATION
- ABOVE GROUND STORAGE TANK
- BUILDING
- FORMER FACILITY
- IMPACTED AREA
- EXTENT OF EXCAVATION
- FENCE LINE
- CONTAINMENT BERM
- CONTAINMENT WALL

SAMPLE ID	SAMPLE ID	SAMPLE ID	SAMPLE ID
DATE	DATE SAMPLED	DATE	DATE SAMPLED
DEPTH	DEPTH (ft)	DEPTH	DEPTH (ft)
ACE	ACENAPHTHENE (mg/kg)	B	BENZENE (mg/kg)
Ant	ANTHRACENE (mg/kg)	F	FLUORENE (mg/kg)
BaA	BENZO (A) ANTHRACENE (mg/kg)	I	INDENO (1,2,3-CD) PYRENE (mg/kg)
BaP	BENZO (A) PYRENE (mg/kg)	N	NAPHTHALENE (mg/kg)
BbF	BENZO (B) FLUORANTHENE (mg/kg)	124TMB	1,2,4-TRIMETHYLBENZENE (mg/kg)
Ch	CHRYSENE (mg/kg)	135TMB	1,3,5-TRIMETHYLBENZENE (mg/kg)
DBaHnt	DIBENZO (A,H) ANTHRACENE (mg/kg)	14TMB	1,4-DIMETHYLBENZENE (mg/kg)
FLU	FLUORANTHENE (mg/kg)	15TMB	1,5-DIMETHYLBENZENE (mg/kg)
FLU	FLUORENE (mg/kg)	16TMB	1,6-DIMETHYLBENZENE (mg/kg)
FLU	FLUORENE (mg/kg)	17TMB	1,7-DIMETHYLBENZENE (mg/kg)
FLU	FLUORENE (mg/kg)	18TMB	1,8-DIMETHYLBENZENE (mg/kg)
FLU	FLUORENE (mg/kg)	19TMB	1,9-DIMETHYLBENZENE (mg/kg)
FLU	FLUORENE (mg/kg)	20TMB	2,0-DIMETHYLBENZENE (mg/kg)
FLU	FLUORENE (mg/kg)	21TMB	2,1-DIMETHYLBENZENE (mg/kg)
FLU	FLUORENE (mg/kg)	22TMB	2,2-DIMETHYLBENZENE (mg/kg)
FLU	FLUORENE (mg/kg)	23TMB	2,3-DIMETHYLBENZENE (mg/kg)
FLU	FLUORENE (mg/kg)	24TMB	2,4-DIMETHYLBENZENE (mg/kg)
FLU	FLUORENE (mg/kg)	25TMB	2,5-DIMETHYLBENZENE (mg/kg)
FLU	FLUORENE (mg/kg)	26TMB	2,6-DIMETHYLBENZENE (mg/kg)
FLU	FLUORENE (mg/kg)	27TMB	2,7-DIMETHYLBENZENE (mg/kg)
FLU	FLUORENE (mg/kg)	28TMB	2,8-DIMETHYLBENZENE (mg/kg)
FLU	FLUORENE (mg/kg)	29TMB	2,9-DIMETHYLBENZENE (mg/kg)
FLU	FLUORENE (mg/kg)	30TMB	3,0-DIMETHYLBENZENE (mg/kg)
FLU	FLUORENE (mg/kg)	31TMB	3,1-DIMETHYLBENZENE (mg/kg)
FLU	FLUORENE (mg/kg)	32TMB	3,2-DIMETHYLBENZENE (mg/kg)
FLU	FLUORENE (mg/kg)	33TMB	3,3-DIMETHYLBENZENE (mg/kg)
FLU	FLUORENE (mg/kg)	34TMB	3,4-DIMETHYLBENZENE (mg/kg)
FLU	FLUORENE (mg/kg)	35TMB	3,5-DIMETHYLBENZENE (mg/kg)
FLU	FLUORENE (mg/kg)	36TMB	3,6-DIMETHYLBENZENE (mg/kg)
FLU	FLUORENE (mg/kg)	37TMB	3,7-DIMETHYLBENZENE (mg/kg)
FLU	FLUORENE (mg/kg)	38TMB	3,8-DIMETHYLBENZENE (mg/kg)
FLU	FLUORENE (mg/kg)	39TMB	3,9-DIMETHYLBENZENE (mg/kg)
FLU	FLUORENE (mg/kg)	40TMB	4,0-DIMETHYLBENZENE (mg/kg)
FLU	FLUORENE (mg/kg)	41TMB	4,1-DIMETHYLBENZENE (mg/kg)
FLU	FLUORENE (mg/kg)	42TMB	4,2-DIMETHYLBENZENE (mg/kg)
FLU	FLUORENE (mg/kg)	43TMB	4,3-DIMETHYLBENZENE (mg/kg)
FLU	FLUORENE (mg/kg)	44TMB	4,4-DIMETHYLBENZENE (mg/kg)
FLU	FLUORENE (mg/kg)	45TMB	4,5-DIMETHYLBENZENE (mg/kg)
FLU	FLUORENE (mg/kg)	46TMB	4,6-DIMETHYLBENZENE (mg/kg)
FLU	FLUORENE (mg/kg)	47TMB	4,7-DIMETHYLBENZENE (mg/kg)
FLU	FLUORENE (mg/kg)	48TMB	4,8-DIMETHYLBENZENE (mg/kg)
FLU	FLUORENE (mg/kg)	49TMB	4,9-DIMETHYLBENZENE (mg/kg)
FLU	FLUORENE (mg/kg)	50TMB	5,0-DIMETHYLBENZENE (mg/kg)
FLU	FLUORENE (mg/kg)	51TMB	5,1-DIMETHYLBENZENE (mg/kg)
FLU	FLUORENE (mg/kg)	52TMB	5,2-DIMETHYLBENZENE (mg/kg)
FLU	FLUORENE (mg/kg)	53TMB	5,3-DIMETHYLBENZENE (mg/kg)
FLU	FLUORENE (mg/kg)	54TMB	5,4-DIMETHYLBENZENE (mg/kg)
FLU	FLUORENE (mg/kg)	55TMB	5,5-DIMETHYLBENZENE (mg/kg)
FLU	FLUORENE (mg/kg)	56TMB	5,6-DIMETHYLBENZENE (mg/kg)
FLU	FLUORENE (mg/kg)	57TMB	5,7-DIMETHYLBENZENE (mg/kg)
FLU	FLUORENE (mg/kg)	58TMB	5,8-DIMETHYLBENZENE (mg/kg)
FLU	FLUORENE (mg/kg)	59TMB	5,9-DIMETHYLBENZENE (mg/kg)
FLU	FLUORENE (mg/kg)	60TMB	6,0-DIMETHYLBENZENE (mg/kg)
FLU	FLUORENE (mg/kg)	61TMB	6,1-DIMETHYLBENZENE (mg/kg)
FLU	FLUORENE (mg/kg)	62TMB	6,2-DIMETHYLBENZENE (mg/kg)
FLU	FLUORENE (mg/kg)	63TMB	6,3-DIMETHYLBENZENE (mg/kg)
FLU	FLUORENE (mg/kg)	64TMB	6,4-DIMETHYLBENZENE (mg/kg)
FLU	FLUORENE (mg/kg)	65TMB	6,5-DIMETHYLBENZENE (mg/kg)
FLU	FLUORENE (mg/kg)	66TMB	6,6-DIMETHYLBENZENE (mg/kg)
FLU	FLUORENE (mg/kg)	67TMB	6,7-DIMETHYLBENZENE (mg/kg)
FLU	FLUORENE (mg/kg)	68TMB	6,8-DIMETHYLBENZENE (mg/kg)
FLU	FLUORENE (mg/kg)	69TMB	6,9-DIMETHYLBENZENE (mg/kg)
FLU	FLUORENE (mg/kg)	70TMB	7,0-DIMETHYLBENZENE (mg/kg)
FLU	FLUORENE (mg/kg)	71TMB	7,1-DIMETHYLBENZENE (mg/kg)
FLU	FLUORENE (mg/kg)	72TMB	7,2-DIMETHYLBENZENE (mg/kg)
FLU	FLUORENE (mg/kg)	73TMB	7,3-DIMETHYLBENZENE (mg/kg)
FLU	FLUORENE (mg/kg)	74TMB	7,4-DIMETHYLBENZENE (mg/kg)
FLU	FLUORENE (mg/kg)	75TMB	7,5-DIMETHYLBENZENE (mg/kg)
FLU	FLUORENE (mg/kg)	76TMB	7,6-DIMETHYLBENZENE (mg/kg)
FLU	FLUORENE (mg/kg)	77TMB	7,7-DIMETHYLBENZENE (mg/kg)
FLU	FLUORENE (mg/kg)	78TMB	7,8-DIMETHYLBENZENE (mg/kg)
FLU	FLUORENE (mg/kg)	79TMB	7,9-DIMETHYLBENZENE (mg/kg)
FLU	FLUORENE (mg/kg)	80TMB	8,0-DIMETHYLBENZENE (mg/kg)
FLU	FLUORENE (mg/kg)	81TMB	8,1-DIMETHYLBENZENE (mg/kg)
FLU	FLUORENE (mg/kg)	82TMB	8,2-DIMETHYLBENZENE (mg/kg)
FLU	FLUORENE (mg/kg)	83TMB	8,3-DIMETHYLBENZENE (mg/kg)
FLU	FLUORENE (mg/kg)	84TMB	8,4-DIMETHYLBENZENE (mg/kg)
FLU	FLUORENE (mg/kg)	85TMB	8,5-DIMETHYLBENZENE (mg/kg)
FLU	FLUORENE (mg/kg)	86TMB	8,6-DIMETHYLBENZENE (mg/kg)
FLU	FLUORENE (mg/kg)	87TMB	8,7-DIMETHYLBENZENE (mg/kg)
FLU	FLUORENE (mg/kg)	88TMB	8,8-DIMETHYLBENZENE (mg/kg)
FLU	FLUORENE (mg/kg)	89TMB	8,9-DIMETHYLBENZENE (mg/kg)
FLU	FLUORENE (mg/kg)	90TMB	9,0-DIMETHYLBENZENE (mg/kg)
FLU	FLUORENE (mg/kg)	91TMB	9,1-DIMETHYLBENZENE (mg/kg)
FLU	FLUORENE (mg/kg)	92TMB	9,2-DIMETHYLBENZENE (mg/kg)
FLU	FLUORENE (mg/kg)	93TMB	9,3-DIMETHYLBENZENE (mg/kg)
FLU	FLUORENE (mg/kg)	94TMB	9,4-DIMETHYLBENZENE (mg/kg)
FLU	FLUORENE (mg/kg)	95TMB	9,5-DIMETHYLBENZENE (mg/kg)
FLU	FLUORENE (mg/kg)	96TMB	9,6-DIMETHYLBENZENE (mg/kg)
FLU	FLUORENE (mg/kg)	97TMB	9,7-DIMETHYLBENZENE (mg/kg)
FLU	FLUORENE (mg/kg)	98TMB	9,8-DIMETHYLBENZENE (mg/kg)
FLU	FLUORENE (mg/kg)	99TMB	9,9-DIMETHYLBENZENE (mg/kg)
FLU	FLUORENE (mg/kg)	100TMB	10,0-DIMETHYLBENZENE (mg/kg)

SAMPLE ID	SAMPLE ID	SAMPLE ID	SAMPLE ID
DATE	DATE SAMPLED	DATE	DATE SAMPLED
DEPTH	DEPTH (ft)	DEPTH	DEPTH (ft)
As	ARSENIC (mg/kg)	B	BENZENE (mg/kg)
Ba	BARIUM (mg/kg)	F	FLUORENE (mg/kg)
Ca	CALCIUM (mg/kg)	I	INDENO (1,2,3-CD) PYRENE (mg/kg)
Cr(VI)	CHROMIUM (mg/kg)	N	NAPHTHALENE (mg/kg)
Cu	COPPER (mg/kg)	124TMB	1,2,4-TRIMETHYLBENZENE (mg/kg)
Pb	LEAD (mg/kg)	135TMB	1,3,5-TRIMETHYLBENZENE (mg/kg)
Ni	NICKEL (mg/kg)	14TMB	1,4-DIMETHYLBENZENE (mg/kg)
Se	SELENIUM (mg/kg)	15TMB	1,5-DIMETHYLBENZENE (mg/kg)
Ag	SILVER (mg/kg)	16TMB	1,6-DIMETHYLBENZENE (mg/kg)
Z	ZINC (mg/kg)	17TMB	1,7-DIMETHYLBENZENE (mg/kg)

Figure 4  
**TRENCH PAH SOIL CHEMISTRY MAP**  
**PDC ENERGY INC**  
**Raindance FD Off-site Tank Pad**  
**SESE Sec. 30, T6N, R67W, 6th PM**  
**Weld County, Colorado**  
**40.451465° , -104.928371°**

Project No. <b>C024-066</b>	Facility #	Initial Spill/Release Report Doc# <b>451100</b>	
Date <b>6/24/24</b>	Remediation #	Filename <b>24066Q2T</b>	



### LEGEND

- POINT OF RELEASE
- SOIL SAMPLE LOCATION
- ABOVE GROUND STORAGE TANK
- BUILDING
- FORMER FACILITY
- IMPACTED AREA
- EXTENT OF EXCAVATION
- FENCE LINE
- CONTAINMENT BERM
- CONTAINMENT WALL

NOT ANALYZED

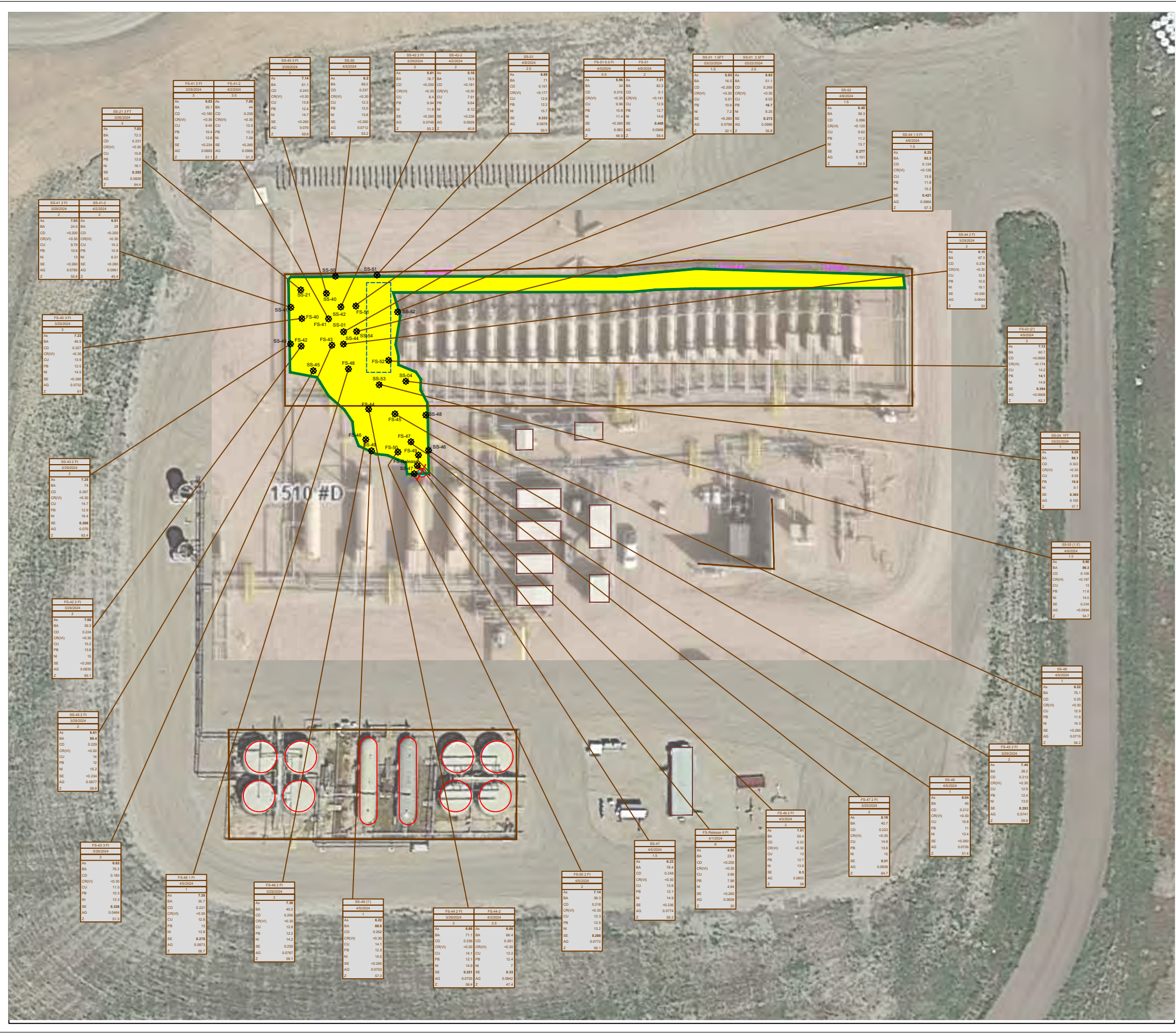
SAMPLE ID	DATE	DEPTH	SAMPLE ID	DATE SAMPLED	DEPTH (ft)
AcE	<0.0050		AN	<0.0050	
BaA	<0.0050		BaP	<0.0050	
BaP	<0.0050		BbF	<0.0050	
BbF	<0.0050		Ch	<0.0050	
Ch	<0.0050		DBaAht	<0.0050	
DBaAht	<0.0050		FLU	<0.0050	
FLU	<0.0050		FL	<0.0050	
FL	<0.0050		INDENO (1,2,3-CD)	<0.0050	
INDENO (1,2,3-CD)	<0.0050		INDENO (1,2,3-CD) PYRENE	<0.0050	
INDENO (1,2,3-CD) PYRENE	<0.0050		1MN	<0.0050	
1MN	<0.0050		1METHYLNAPHTHALENE	<0.0050	
1METHYLNAPHTHALENE	<0.0050		2METHYLNAPHTHALENE	<0.0050	
2METHYLNAPHTHALENE	<0.0050				

SAMPLE ID	DATE	DEPTH	SAMPLE ID	DATE SAMPLED	DEPTH (ft)
As	<0.01		ARSENIC	<0.01	
Ba	<0.01		BARIIUM	<0.01	
Ca	<0.01		CADMIUM	<0.01	
CR(VI)	<0.01		CHROMIUM	<0.01	
CU	<0.01		COPPER	<0.01	
PB	<0.01		LEAD	<0.01	
NH	<0.05		NICKEL	<0.05	
SE	<0.05		SELENIUM	<0.05	
AG	<0.05		SILVER	<0.05	
Z	<0.05		ZINC	<0.05	

Figure 5  
**VOLATILE SOIL CHEMISTRY MAP**  
**PDC ENERGY INC**  
**Raindance FD Off-site Tank Pad**  
**SESE Sec. 30, T6N, R67W, 6th PM**  
**Weld County, Colorado**  
**40.451465°, -104.928371°**

Project No. <b>C024-066</b>	Facility #	Initial Spill/Release Report Doc# <b>451100</b>	
Date <b>6/24/24</b>	Remediation #	Filename <b>24066Q2</b>	





### LEGEND

- POINT OF RELEASE
- SOIL SAMPLE LOCATION
- ABOVE GROUND STORAGE TANK
- BUILDING
- FORMER FACILITY
- IMPACTED AREA
- EXTENT OF EXCAVATION
- FENCE LINE
- CONTAINMENT BERM
- CONTAINMENT WALL

SAMPLE ID	DATE	SAMPLE ID	DATE
AS	<0.0050	AS	<0.0050
BA	<0.0050	BA	<0.0050
CD	<0.0050	CD	<0.0050
CR(VI)	<0.0050	CR(VI)	<0.0050
CU	<0.0050	CU	<0.0050
NI	<0.0050	NI	<0.0050
PB	<0.0050	PB	<0.0050
SE	<0.0050	SE	<0.0050
AG	<0.0050	AG	<0.0050
Z	<0.0050	Z	<0.0050

SAMPLE ID	DATE	SAMPLE ID	DATE
AS	<0.01	AS	<0.01
BA	<0.01	BA	<0.01
CD	<0.01	CD	<0.01
CR(VI)	<0.01	CR(VI)	<0.01
CU	<0.01	CU	<0.01
NI	<0.01	NI	<0.01
PB	<0.01	PB	<0.01
SE	<0.01	SE	<0.01
AG	<0.01	AG	<0.01
Z	<0.01	Z	<0.01

SAMPLE ID	DATE	SAMPLE ID	DATE
AS	<0.01	AS	<0.01
BA	<0.01	BA	<0.01
CD	<0.01	CD	<0.01
CR(VI)	<0.01	CR(VI)	<0.01
CU	<0.01	CU	<0.01
NI	<0.01	NI	<0.01
PB	<0.01	PB	<0.01
SE	<0.01	SE	<0.01
AG	<0.01	AG	<0.01
Z	<0.01	Z	<0.01

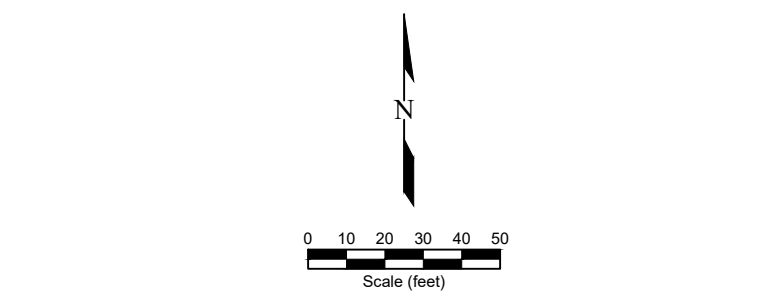
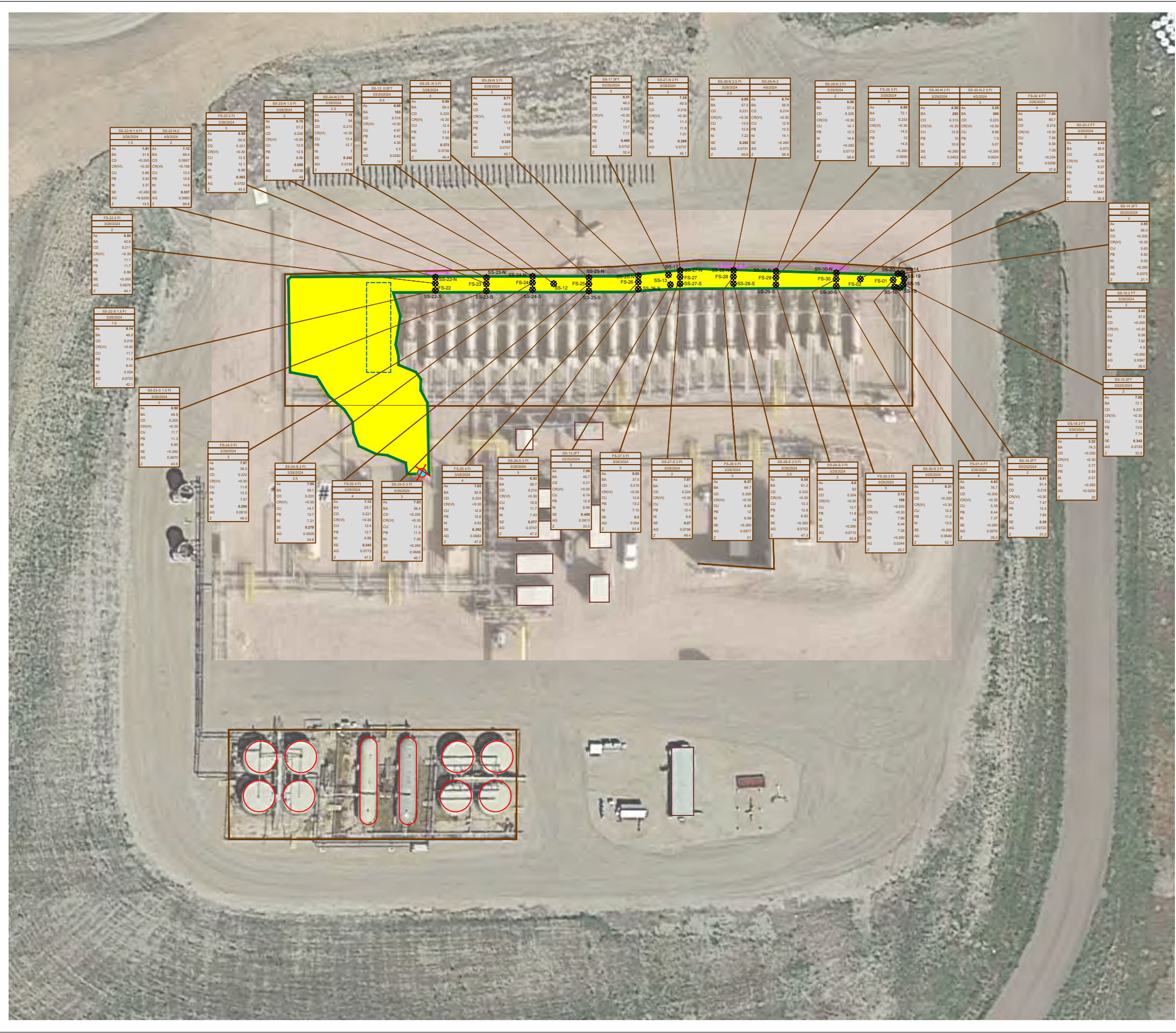


Figure 7  
METALS IN SOIL CHEMISTRY MAP

**PDC ENERGY INC**  
**Raindance FD Off-site Tank Pad**  
 SESE Sec. 30, T6N, R67W, 6th PM  
 Weld County, Colorado  
 40.451465° , -104.928371°

Project No. <b>C024-066</b>	Facility #	Initial Spill/Release Report Doc# <b>451100</b>	
Date <b>6/24/24</b>	Remediation #	Filename <b>24066Q2</b>	



### LEGEND

- ★ POINT OF RELEASE
- ⊗ SOIL SAMPLE LOCATION
- ABOVE GROUND STORAGE TANK
- BUILDING
- ▭ FORMER FACILITY
- IMPACTED AREA
- EXTENT OF EXCAVATION
- - - FENCE LINE
- ▤ CONTAINMENT BERM
- ▬ CONTAINMENT WALL

■ NOT ANALYZED

SAMPLE ID	SAMPLE DATE	SAMPLE ID	SAMPLE DATE
As	<0.0500	As	<0.0500
Ba	<0.0500	Ba	<0.0500
Cr(VI)	<0.0500	Cr(VI)	<0.0500
Cu	<0.0500	Cu	<0.0500
Ni	<0.0500	Ni	<0.0500
Pb	<0.0500	Pb	<0.0500
Se	<0.0500	Se	<0.0500
Ag	<0.0500	Ag	<0.0500
Zn	<0.0500	Zn	<0.0500

SAMPLE ID	SAMPLE DATE	SAMPLE ID	SAMPLE DATE
As	<0.01	As	<0.01
Ba	<0.01	Ba	<0.01
Cr(VI)	<0.01	Cr(VI)	<0.01
Cu	<0.01	Cu	<0.01
Ni	<0.01	Ni	<0.01
Pb	<0.01	Pb	<0.01
Se	<0.01	Se	<0.01
Ag	<0.01	Ag	<0.01
Zn	<0.01	Zn	<0.01

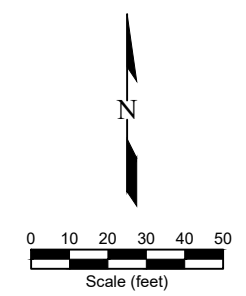
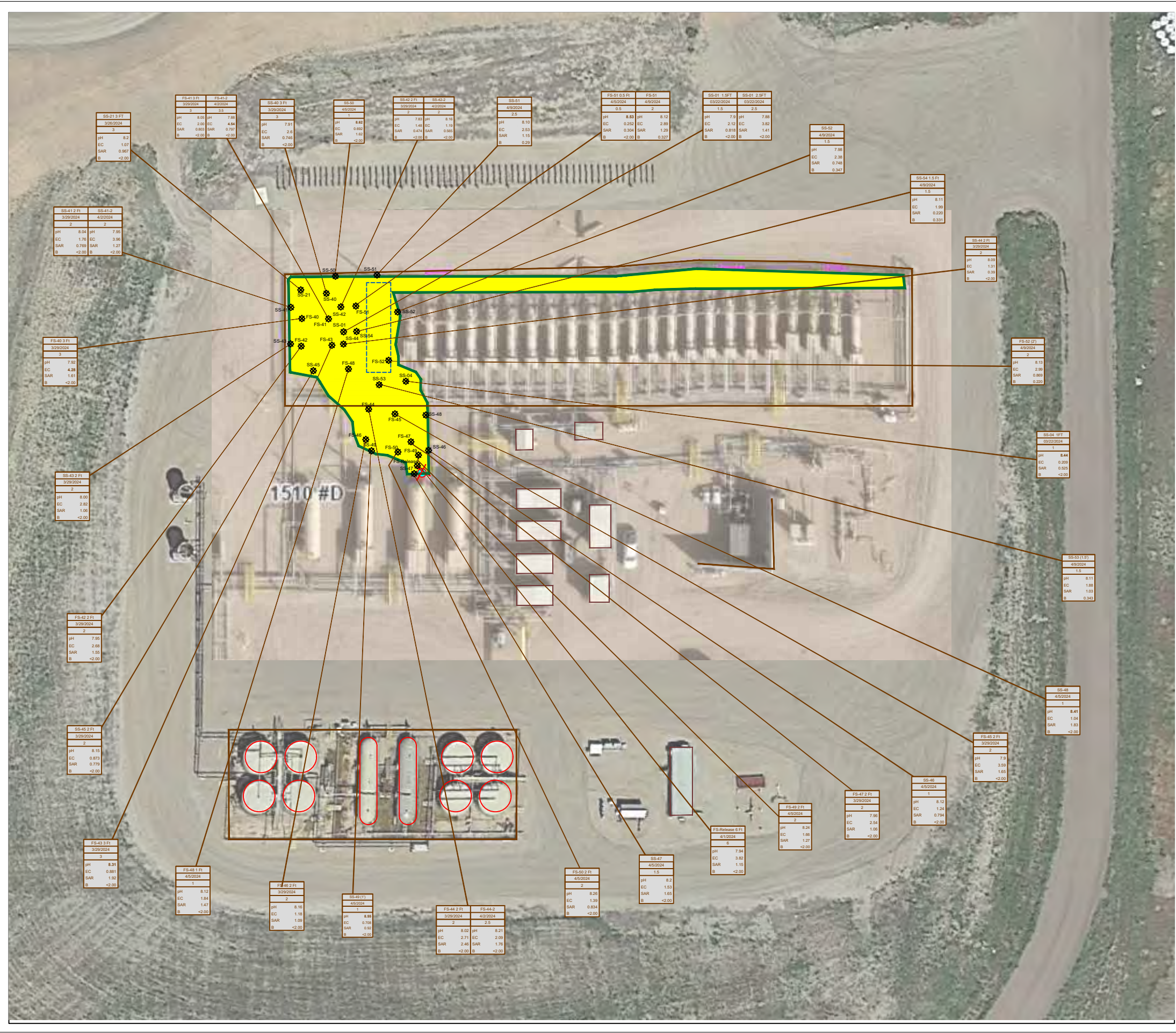


Figure 8  
TRENCH METALS IN SOIL CHEMISTRY MAP

**PDC ENERGY INC**  
**Raindance FD Off-site Tank Pad**  
 SESE Sec. 30, T6N, R67W, 6th PM  
 Weld County, Colorado  
 40.451465°, -104.928371°

Project No. <b>C024-066</b>	Facility #	Initial Spill/Release Report Doc# <b>451100</b>	
Date <b>6/24/24</b>	Remediation #	Filename <b>24066Q2T</b>	



### LEGEND

- POINT OF RELEASE
- SOIL SAMPLE LOCATION
- ABOVE GROUND STORAGE TANK
- BUILDING
- FORMER FACILITY
- IMPACTED AREA
- EXTENT OF EXCAVATION
- FENCE LINE
- CONTAINMENT BERM
- CONTAINMENT WALL

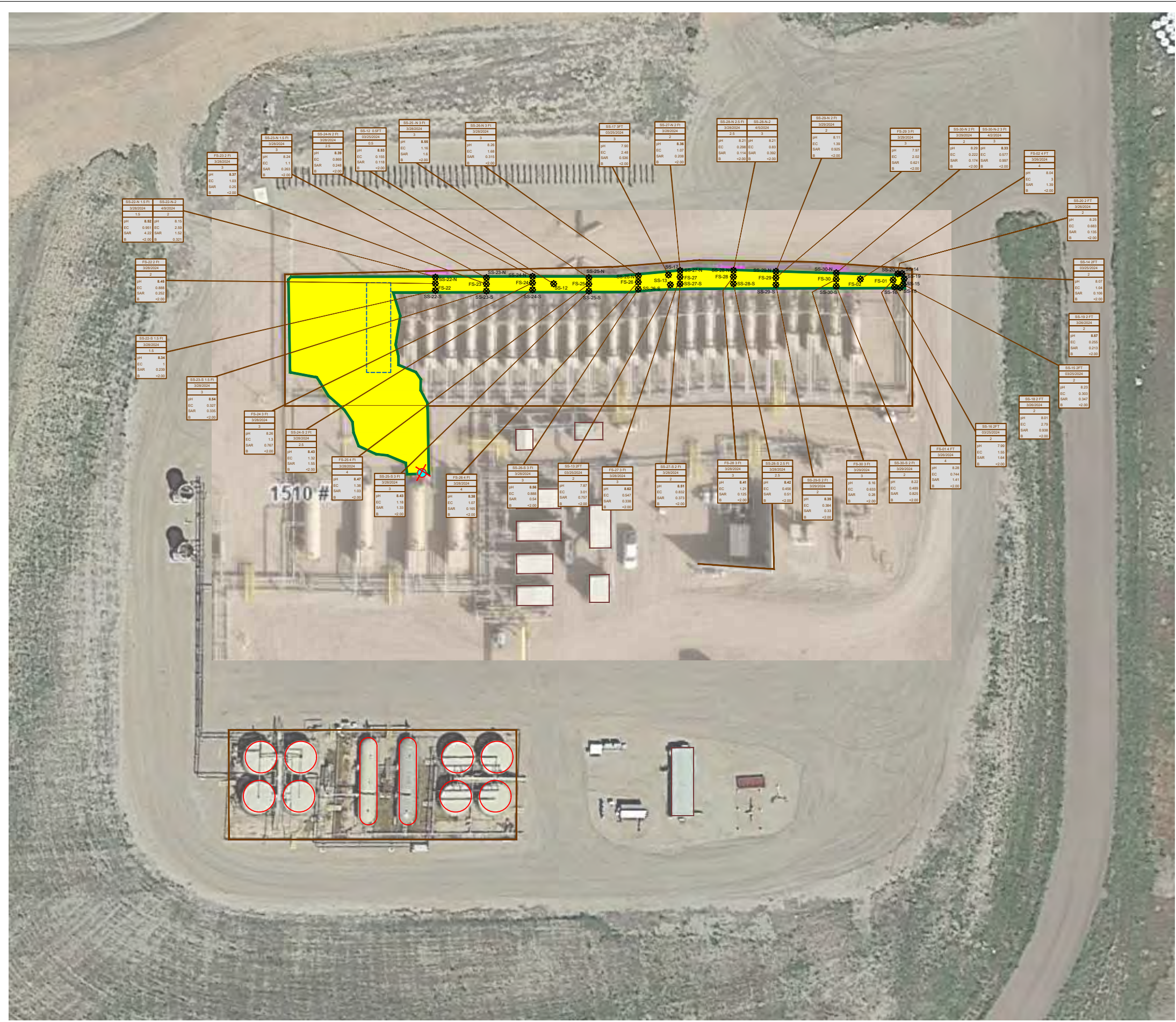
NOT ANALYZED

SAMPLE ID	DATE	DEPTH	SAMPLE ID	DATE	DEPTH
As	<0.01	ARSENIC (mg/kg)	SS-41.2 FI	3/29/2024	2
Ba	<0.01	BARIIUM (mg/kg)	SS-41.2 FI	3/29/2024	2
Ca	<0.01	CADMIUM (mg/kg)	SS-41.2 FI	3/29/2024	2
Cr(VI)	<0.05	CHROMIUM (mg/kg)	SS-41.2 FI	3/29/2024	2
Cu	<0.01	COPPER (mg/kg)	SS-41.2 FI	3/29/2024	2
Pb	<0.01	LEAD (mg/kg)	SS-41.2 FI	3/29/2024	2
Ni	<0.05	NICKEL (mg/kg)	SS-41.2 FI	3/29/2024	2
Se	<0.5	SELENIUM (mg/kg)	SS-41.2 FI	3/29/2024	2
Ag	<0.05	SILVER (mg/kg)	SS-41.2 FI	3/29/2024	2
Zn	<0.05	ZINC (mg/kg)	SS-41.2 FI	3/29/2024	2

SAMPLE ID	DATE	DEPTH	SAMPLE ID	DATE	DEPTH
Ac	<0.0050	ACENAPHTHENE (mg/kg)	SS-41.2 FI	3/29/2024	2
Ant	<0.0050	ANTHRACENE (mg/kg)	SS-41.2 FI	3/29/2024	2
BaA	<0.0050	BENZO (A) ANTHRACENE (mg/kg)	SS-41.2 FI	3/29/2024	2
BaP	<0.0050	BENZO (A) PYRENE (mg/kg)	SS-41.2 FI	3/29/2024	2
BbF	<0.0050	BENZO (B) FLUORANTHENE (mg/kg)	SS-41.2 FI	3/29/2024	2
BkF	<0.0050	BENZO (K) FLUORANTHENE (mg/kg)	SS-41.2 FI	3/29/2024	2
Ch	<0.0050	CHRYSENE (mg/kg)	SS-41.2 FI	3/29/2024	2
DBaA	<0.0050	DIBENZ (A,H) ANTHRACENE (mg/kg)	SS-41.2 FI	3/29/2024	2
FLU	<0.0050	FLUORANTHENE (mg/kg)	SS-41.2 FI	3/29/2024	2
FL	<0.0050	FLUORENE (mg/kg)	SS-41.2 FI	3/29/2024	2
I123456789	<0.0050	INDENO (1,2,3-CD) PYRENE (mg/kg)	SS-41.2 FI	3/29/2024	2
Py	<0.0050	PYRENE (mg/kg)	SS-41.2 FI	3/29/2024	2
1MN	<0.0050	1-METHYLNAPHTHALENE (mg/kg)	SS-41.2 FI	3/29/2024	2
2MN	<0.0050	2-METHYLNAPHTHALENE (mg/kg)	SS-41.2 FI	3/29/2024	2

Figure 9  
**INORGANIC SOIL CHEMISTRY MAP**  
**PDC ENERGY INC**  
**Raindance FD Off-site Tank Pad**  
**SESE Sec. 30, T6N, R67W, 6th PM**  
**Weld County, Colorado**  
**40.451465°, -104.928371°**

Project No. <b>C024-066</b>	Facility #	Initial Spill/Release Report Doc# <b>451100</b>	
Date <b>6/24/24</b>	Remediation #	Filename <b>24066Q2</b>	



### LEGEND

- ★ POINT OF RELEASE
- BUILDING
- FORMER FACILITY
- IMPACTED AREA
- ABOVE GROUND STORAGE TANK
- SOIL SAMPLE LOCATION
- EXTENT OF EXCAVATION
- FENCE LINE
- CONTAINMENT BERM
- CONTAINMENT WALL

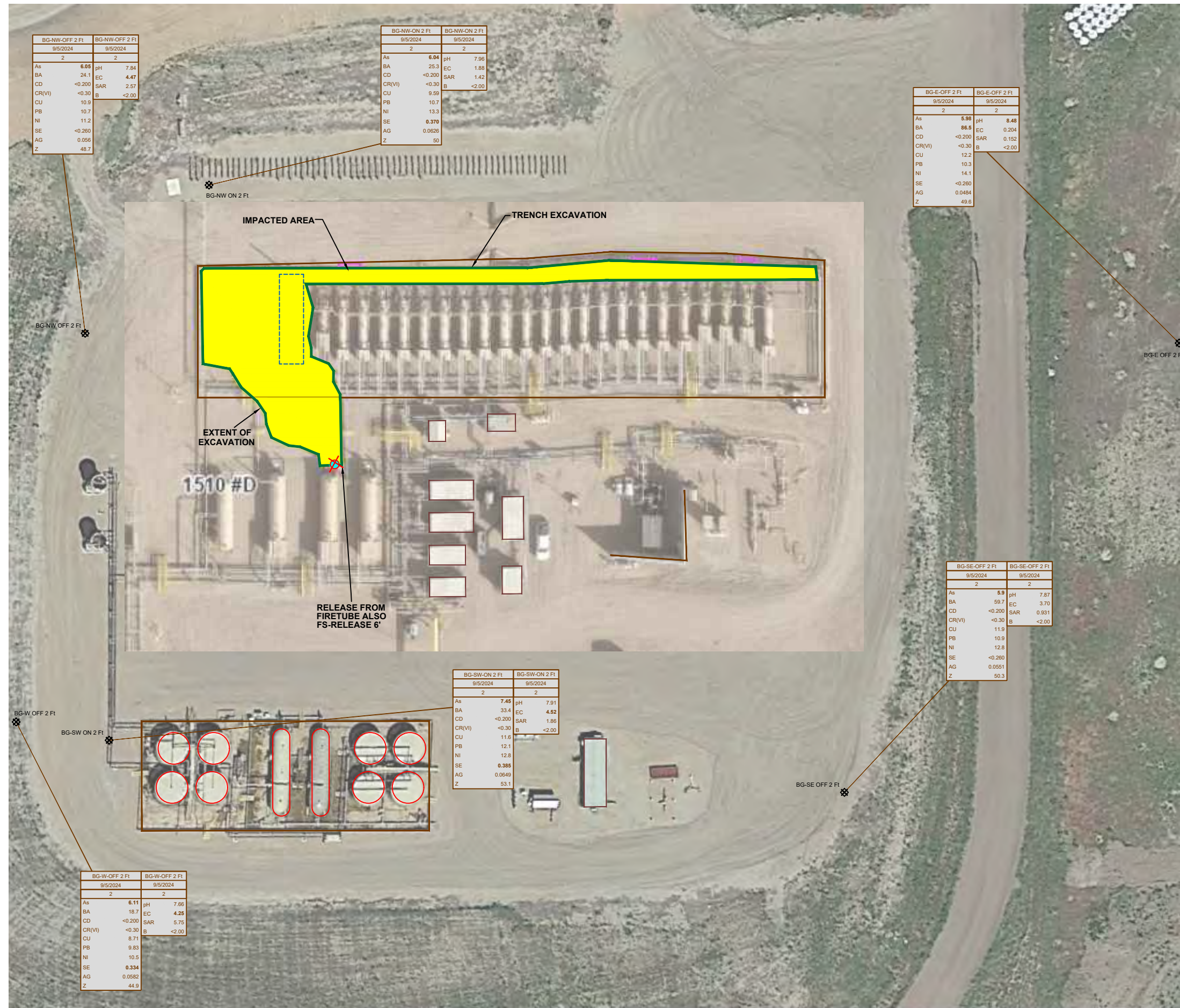
  NOT ANALYZED

SAMPLE ID	DEPTH	DATE SAMPLED	SAMPLE ID	DEPTH	DATE SAMPLED
AcE	<0.0050	3/28/2024	AcE	<0.0050	3/28/2024
BaA	<0.0050	3/28/2024	BaA	<0.0050	3/28/2024
BaP	<0.0050	3/28/2024	BaP	<0.0050	3/28/2024
BbF	<0.0050	3/28/2024	BbF	<0.0050	3/28/2024
Ch	<0.0050	3/28/2024	Ch	<0.0050	3/28/2024
DBaAht	<0.0050	3/28/2024	DBaAht	<0.0050	3/28/2024
FLU	<0.0050	3/28/2024	FLU	<0.0050	3/28/2024
FL	<0.0050	3/28/2024	FL	<0.0050	3/28/2024
Flu	<0.0050	3/28/2024	Flu	<0.0050	3/28/2024
IND	<0.0050	3/28/2024	IND	<0.0050	3/28/2024
Py	<0.0050	3/28/2024	Py	<0.0050	3/28/2024
MN	<0.0050	3/28/2024	MN	<0.0050	3/28/2024
Zn	<0.0050	3/28/2024	Zn	<0.0050	3/28/2024

SAMPLE ID	DEPTH	DATE SAMPLED	SAMPLE ID	DEPTH	DATE SAMPLED
As	<0.01	3/28/2024	As	<0.01	3/28/2024
Ba	<0.01	3/28/2024	Ba	<0.01	3/28/2024
Cr(VI)	<0.01	3/28/2024	Cr(VI)	<0.01	3/28/2024
Cu	<0.01	3/28/2024	Cu	<0.01	3/28/2024
Pb	<0.05	3/28/2024	Pb	<0.05	3/28/2024
Ni	<0.05	3/28/2024	Ni	<0.05	3/28/2024
Se	<0.5	3/28/2024	Se	<0.5	3/28/2024
Ag	<0.05	3/28/2024	Ag	<0.05	3/28/2024
Z	<0.05	3/28/2024	Z	<0.05	3/28/2024

Figure 10  
**TRENCH INORGANIC SOIL CHEMISTRY MAP**  
**PDC ENERGY INC**  
**Raindance FD Off-site Tank Pad**  
**SESE Sec. 30, T6N, R67W, 6th PM**  
**Weld County, Colorado**  
**40.451465°, -104.928371°**

Project No. <b>C024-066</b>	Facility #	Initial Spill/Release Report Doc# <b>451100</b>	
Date <b>6/24/24</b>	Remediation #	Filename # <b>24066Q2T</b>	



BG-NW-OFF 2 Ft		BG-NW-OFF 2 Ft	
9/5/2024		9/5/2024	
2		2	
As	6.08	pH	7.84
BA	24.1	EC	4.47
CD	<0.200	SAR	2.57
CR(VI)	<0.30	B	<2.00
CU	10.9		
PB	10.7		
NI	11.2		
SE	<0.260		
AG	0.056		
Z	48.7		

BG-NW-ON 2 Ft		BG-NW-ON 2 Ft	
9/5/2024		9/5/2024	
2		2	
As	6.04	pH	7.96
BA	25.3	EC	1.88
CD	<0.200	SAR	1.42
CR(VI)	<0.30	B	<2.00
CU	9.59		
PB	10.7		
NI	13.3		
SE	0.370		
AG	0.0626		
Z	50		

BG-E-OFF 2 Ft		BG-E-OFF 2 Ft	
9/5/2024		9/5/2024	
2		2	
As	5.98	pH	8.48
BA	86.5	EC	0.204
CD	<0.200	SAR	0.152
CR(VI)	<0.30	B	<2.00
CU	12.2		
PB	10.3		
NI	14.1		
SE	<0.260		
AG	0.0484		
Z	49.6		

BG-SE-OFF 2 Ft		BG-SE-OFF 2 Ft	
9/5/2024		9/5/2024	
2		2	
As	5.8	pH	7.87
BA	59.7	EC	3.70
CD	<0.200	SAR	0.931
CR(VI)	<0.30	B	<2.00
CU	11.9		
PB	10.9		
NI	12.8		
SE	<0.260		
AG	0.0551		
Z	50.3		

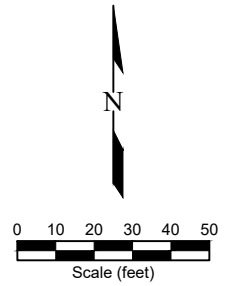
BG-SW-ON 2 Ft		BG-SW-ON 2 Ft	
9/5/2024		9/5/2024	
2		2	
As	7.45	pH	7.91
BA	33.4	EC	4.52
CD	<0.200	SAR	1.86
CR(VI)	<0.30	B	<2.00
CU	11.6		
PB	12.1		
NI	12.8		
SE	0.385		
AG	0.0649		
Z	53.1		

BG-W-OFF 2 Ft		BG-W-OFF 2 Ft	
9/5/2024		9/5/2024	
2		2	
As	6.11	pH	7.86
BA	18.7	EC	4.25
CD	<0.200	SAR	5.75
CR(VI)	<0.30	B	<2.00
CU	8.71		
PB	9.83		
NI	10.5		
SE	0.334		
AG	0.0582		
Z	44.9		

**LEGEND**

- POINT OF RELEASE
- SOIL SAMPLE LOCATION
- ABOVE GROUND STORAGE TANK
- BUILDING
- FORMER FACILITY
- IMPACTED AREA
- EXTENT OF EXCAVATION
- FENCE LINE
- CONTAINMENT BERM
- CONTAINMENT WALL

SAMPLE	DEPTH	DATE SAMPLED	DEPTH (ft)	DATE SAMPLED
As	<0.01	ARSENIC (mg/kg)	As	<0.01
BA	<0.01	BARIIUM (mg/kg)	BA	<0.01
CD	<0.05	CADMIUM (mg/kg)	CD	<0.05
CR(VI)	<0.01	CHROMIUM (mg/kg)	CR(VI)	<0.01
CU	<0.05	COPPER (mg/kg)	CU	<0.05
PB	<0.05	LEAD (mg/kg)	PB	<0.05
NI	<0.05	NICKEL (mg/kg)	NI	<0.05
SE	<0.5	SELENIUM (mg/kg)	SE	<0.5
AG	<0.05	SILVER (mg/kg)	AG	<0.05
Z	<0.05	ZINC (mg/kg)	Z	<0.05



**Figure 11**  
**BACKGROUND SAMPLE SOIL CHEMISTRY MAP**  
**PDC ENERGY INC**  
**Raindance FD Off-site Tank Pad**  
 SESE Sec. 30, T6N, R67W, 6th PM  
 Weld County, Colorado  
 40.451465°, -104.928371°

Project No. <b>C024-066</b>	Facility #	Initial Spill/Release Report Doc# <b>451100</b>	
Date <b>10/7/24</b>	Remediation #	Filename <b>24066Q2BKG</b>	