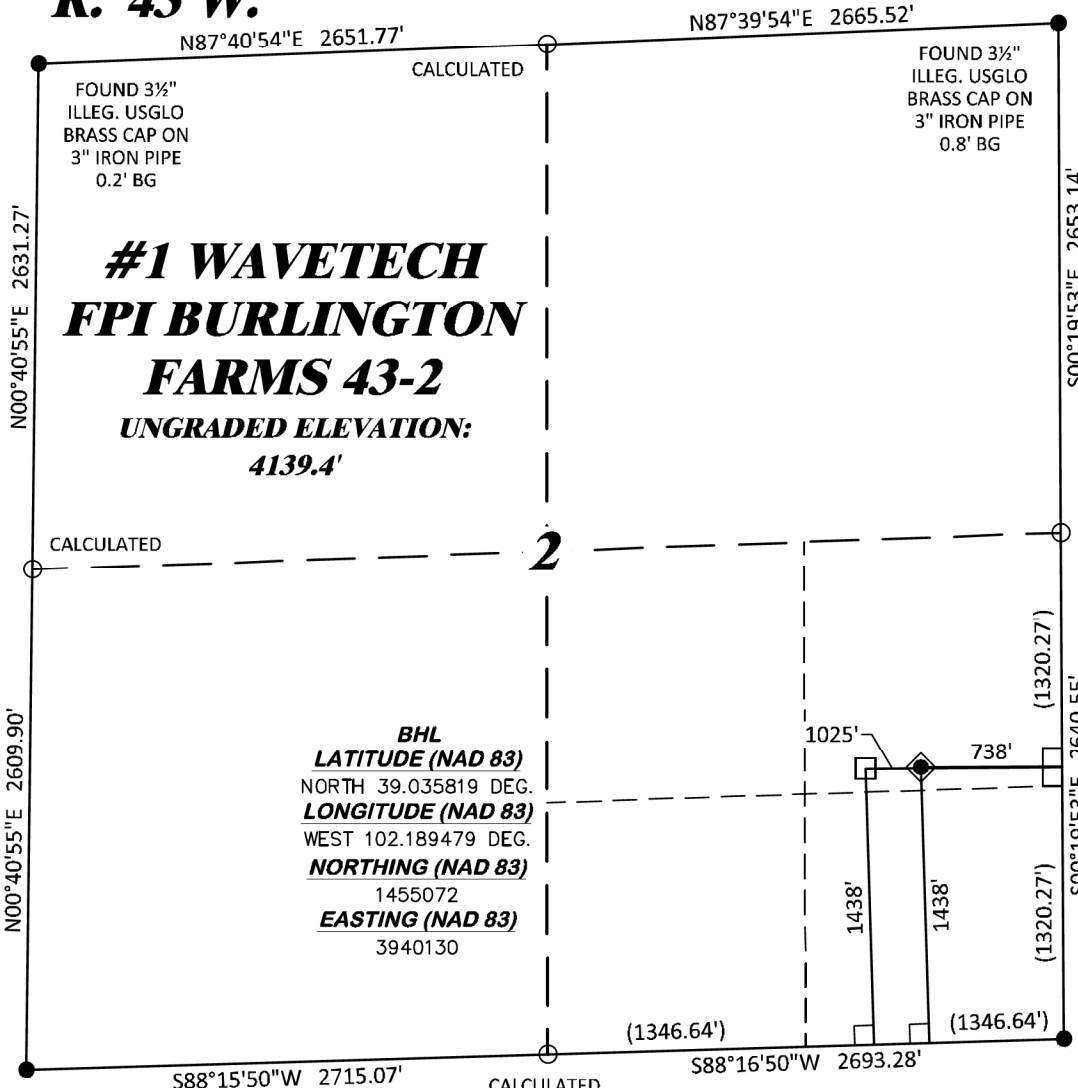


R. 43 W.



GRID NORTH
SCALE' 1" = 1000'
500' 0 1000'

T. 12 S.

**#1 WAVETECH
FPI BURLINGTON
FARMS 43-2**
UNGRADED ELEVATION:
4139.4'

BHL
LATITUDE (NAD 83)
NORTH 39.035819 DEG.
LONGITUDE (NAD 83)
WEST 102.189479 DEG.
NORTHING (NAD 83)
1455072
EASTING (NAD 83)
3940130

SHL
LATITUDE (NAD 83)
NORTH 39.035815 DEG.
LONGITUDE (NAD 83)
WEST 102.188468 DEG.
NORTHING (NAD 83)
1455080.52
EASTING (NAD 83)
3940417.31

FOUND No. 6
REBAR 0.6' BG
ATTACHED 2 1/2"
ALUM. CAP
"PLS 38109"

FOUND 2 1/2" 1996
ALUM. CAP ON No. 6
REBAR "GEOSURV
PLS 22097" 1.0' BG

LEGEND

- ◆ WELL LOCATION
- BOTTOM HOLE LOCATION
- L DENOTES 90° TIE
- FOUND MONUMENT AS NOTED
- CALCULATED POSITION

BASIS OF BEARINGS, ELEVATIONS & DATUM

SPCS, CO CENTRAL ZONE, NAD 27, BASED ON NGS MONUMENT "POORMAN" AN IRON ROD IN SLEEVE, HAVING A PUBLISHED POSITION OF:
NAD83(2011)
LAT 39° 00' 13.984" NORTH
LONG 102° 16' 42.824" WEST
NAVD88 ELEVATION: 4206.93"

THE EAST LINE OF SECTION 2, MONUMENTED AS SHOWN AND BEARING S00°19'53"E.

NOTES

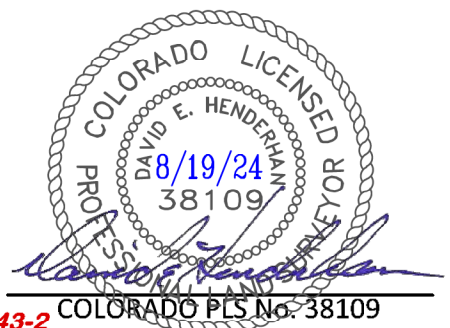
1. GPS OPERATOR J. MONTOYA OBSERVED A PDOF OF 2.1.
2. ALL GPS OBSERVATIONS ARE IN COMPLIANCE WITH COGCC RULE No.215.
3. EXISTING IMPROVEMENTS WITHIN 2000' OF LOCATION. SEE LOC. DRAWING.
4. SURROUNDING SURFACE USE IS CULTIVATED CROPLAND.

SURVEYOR'S STATEMENT

I, DAVID E. HENDERHAN, AN EMPLOYEE AND AGENT ON BEHALF OF D.R. GRIFFIN & ASSOCIATES, INC. STATE THE PLAT HEREON IS A CORRECT REPRESENTATION OF A SURVEY MADE UNDER MY SUPERVISION ON THE 8th DAY OF JULY, 2022 OF THE SHOWN #1 WAVETECH FPI BURLINGTON FARMS 43-2 AND THAT THE LOCATION HAS BEEN STAKED ON THE GROUND AS SHOWN ON THIS PLAT.

Notice: In accordance with Colorado State Law, any legal action based upon any defect in this survey plat must commence within three (3) years after first discovery of such defect. In no event, may any action based upon any defect in this survey plat be commenced more than ten (10) years from the date of certification shown hereon.

#1 WAVETECH FPI BURLINGTON FARMS 43-2



COLORADO PLS No. 38109



**PLAT OF DRILLING LOCATION IN
NESE, SECTION 2, FOR
WAVETECH HELIUM, INC.**

DRAWN: 8/4/22 - JMB/DEH	SCALE: 1" = 1000'
REVISED: 8/15/24 - JMB	DRG JOB No. 22270
ADDED BHL	EXHIBIT A

**1,438' F/SL, & 738' F/EL, SECTION 2,
T. 12 S., R. 43 W., 6TH P.M.,
CHEYENNE COUNTY, COLORADO**