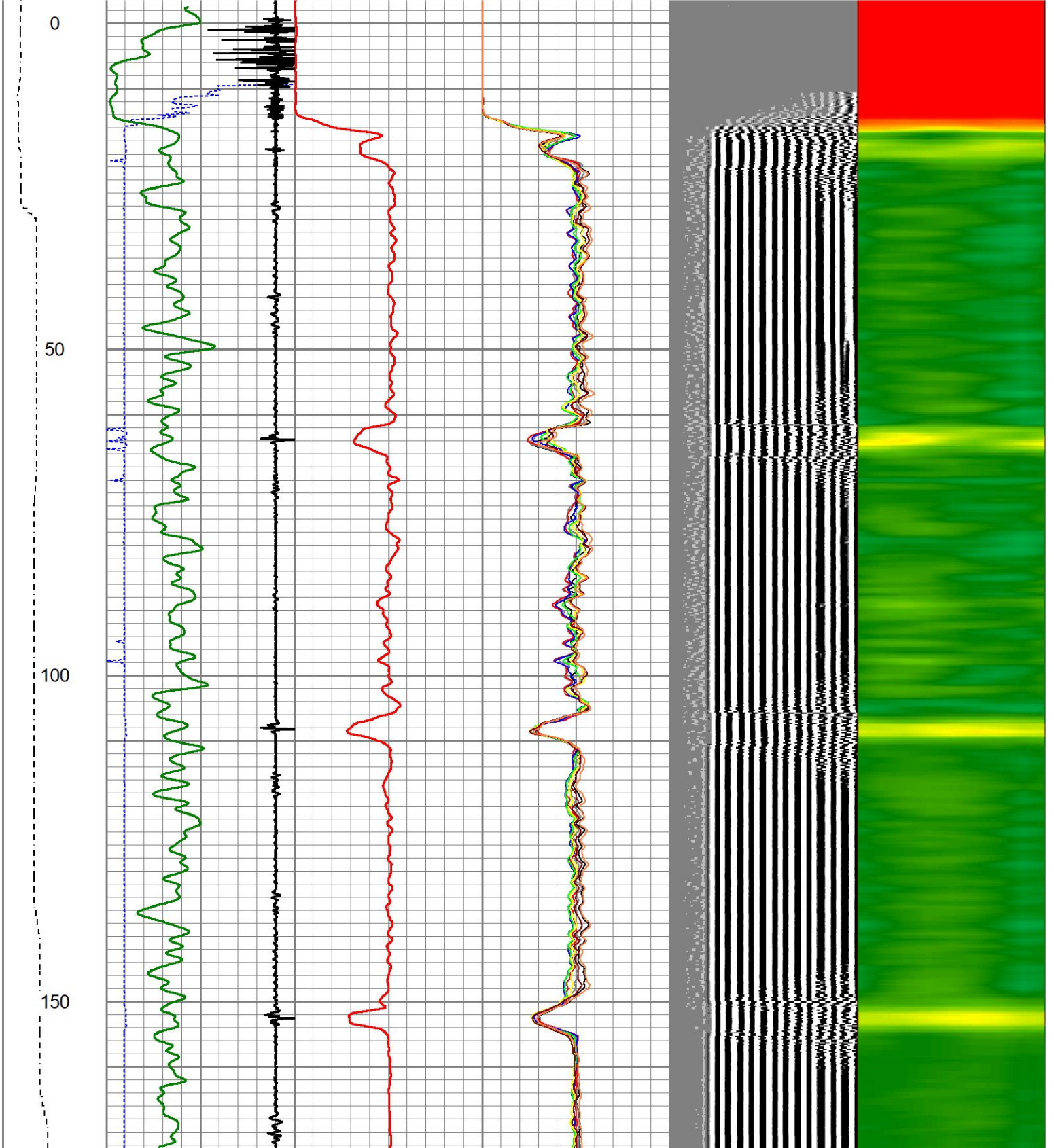
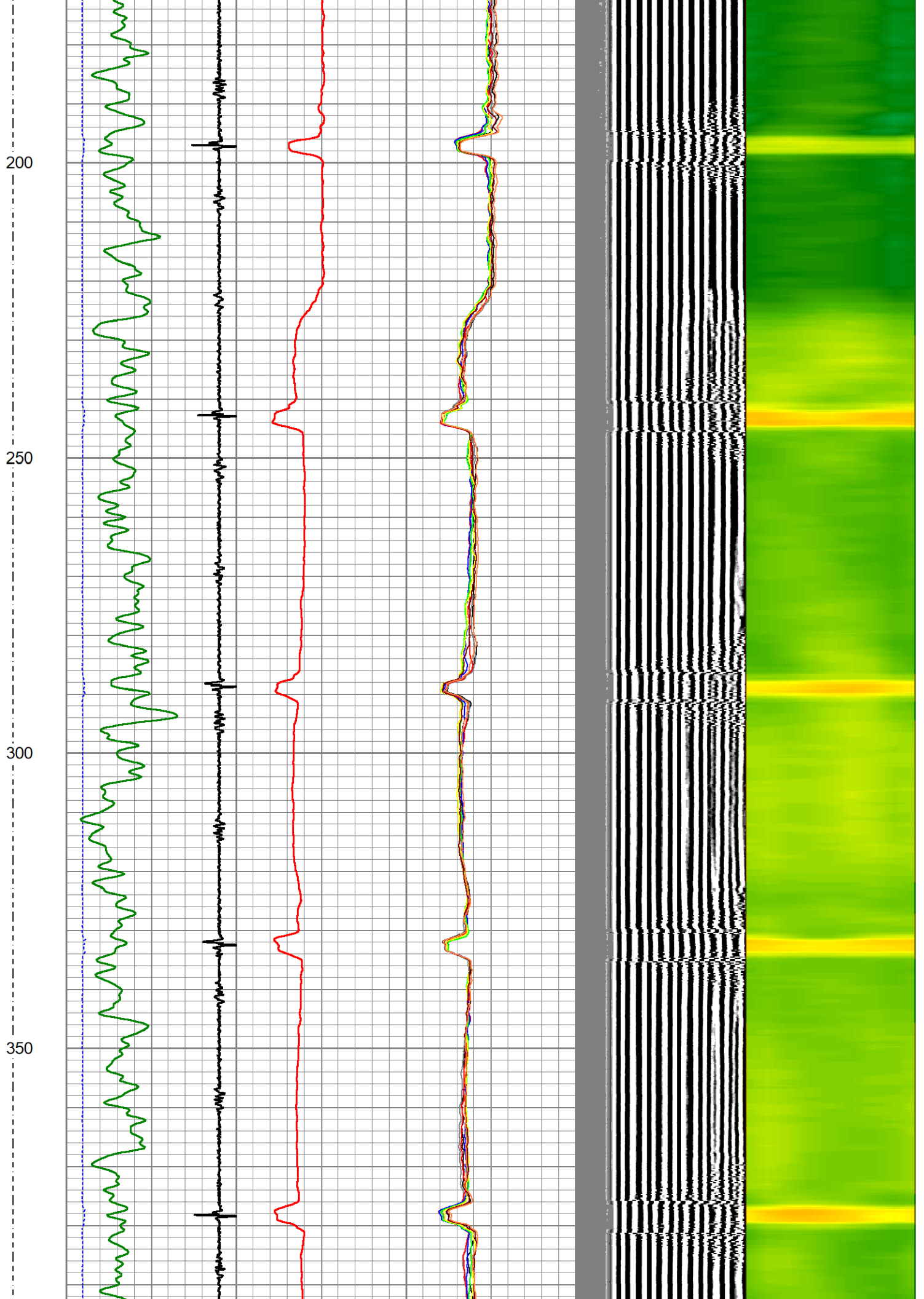


Dataset: cbl moss 14-16h.db: field/well/run1/pass2
 Total length: 20.93 ft
 Total weight: 85.00 lb
 O.D.: 2.75 in

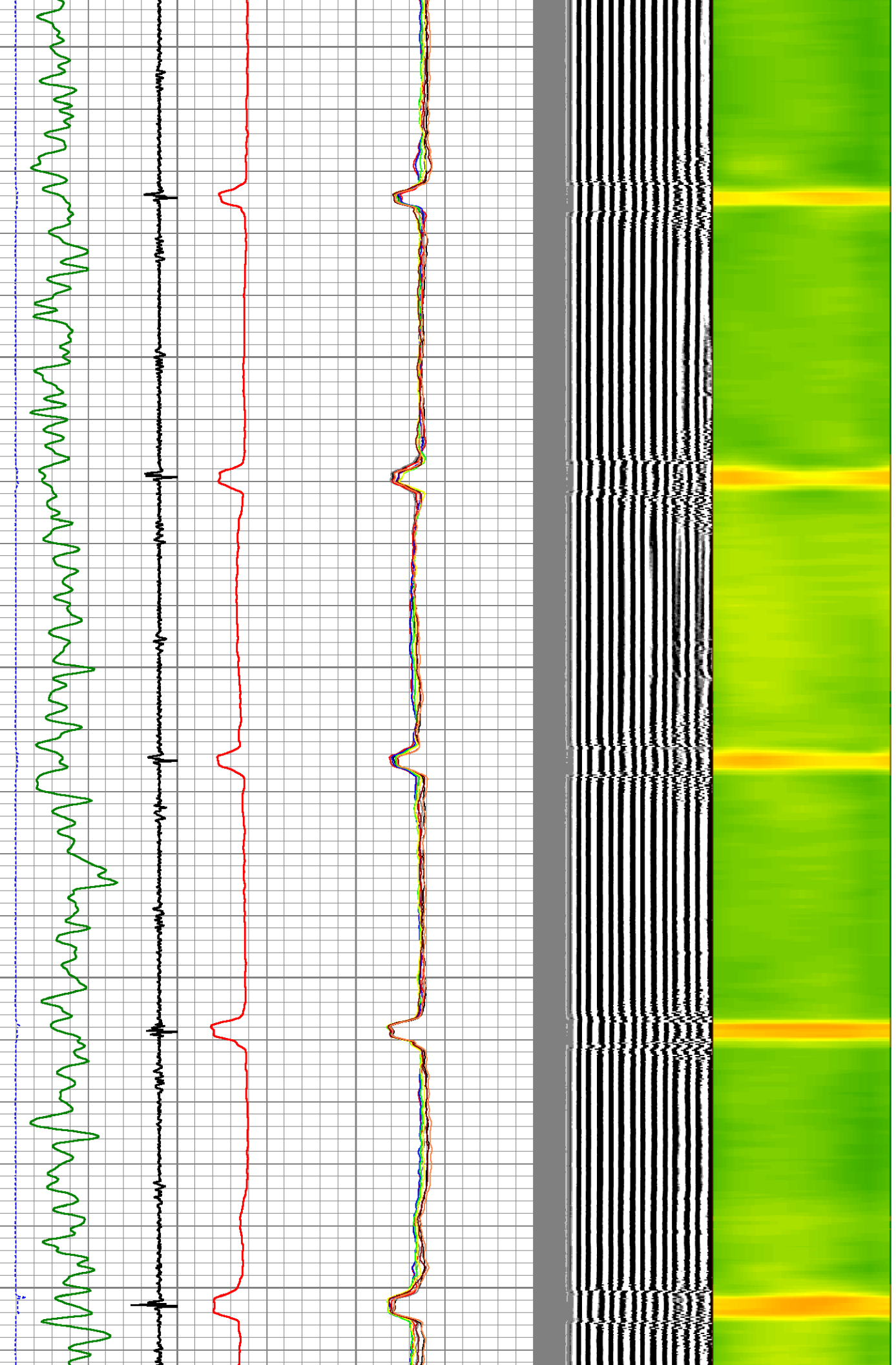
Database File: cbl moss 14-16h.db
 Dataset Pathname: pass2
 Presentation Format: ips_rbtcolorcivitas
 Dataset Creation: Mon Jul 01 11:56:47 2024
 Charted by: Depth in Feet scaled 1:240

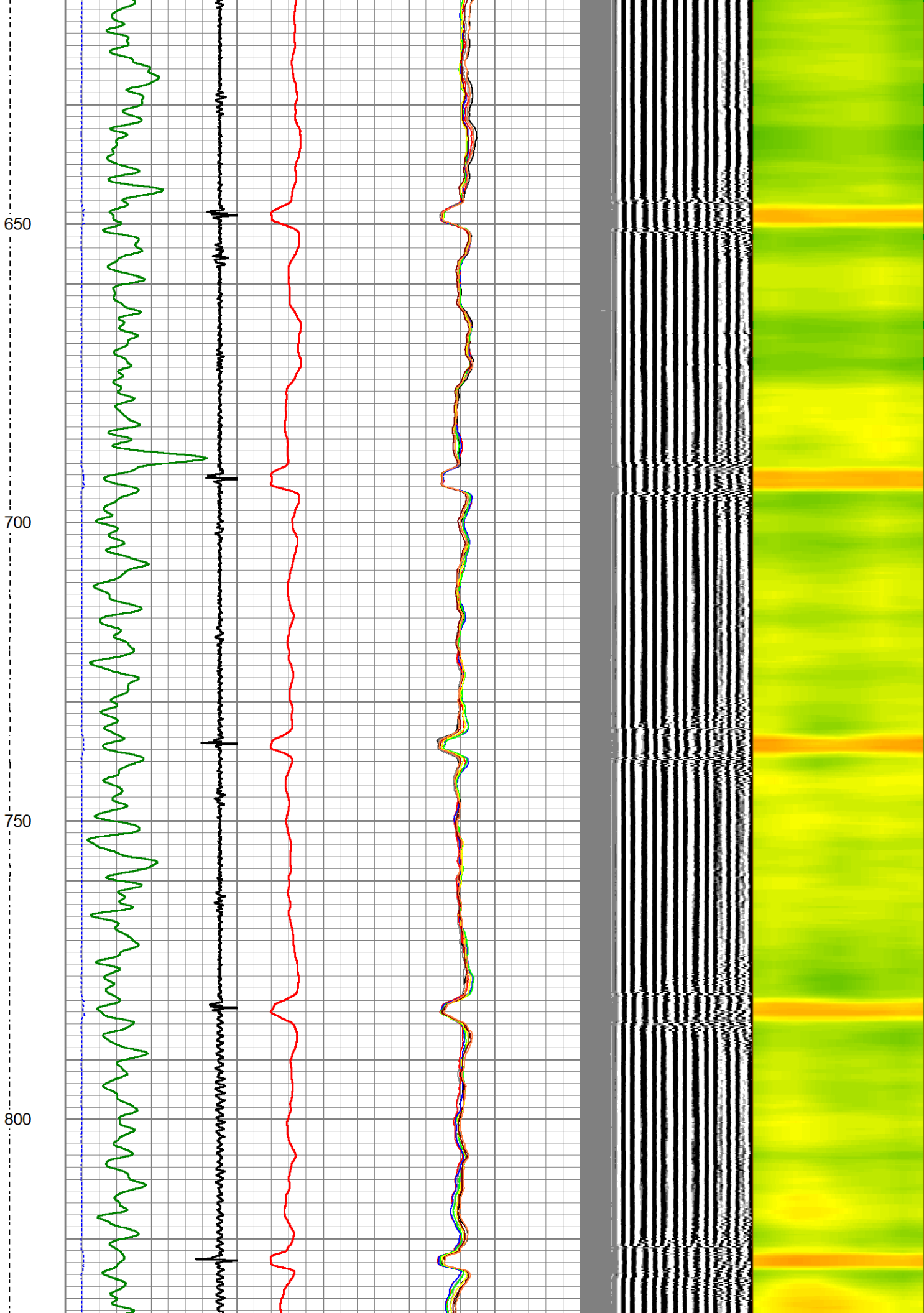
LSPD	200	TT (usec)	1000	0	AMP (mV)	100	0	AMPS1	100	200	VDL (usec)	1200	1	Cement Map	8
(ft/min)	-9	CCL	1				0	AMPS2	100						
0	250	0	GR (GAPI)	150			0	AMPS3	100						
		150	GR (GAPI)	400			0	AMPS4	100						
							0	AMPS5	100						
							0	AMPS6	100						
							0	AMPS7	100						
							0	AMPS8	100						

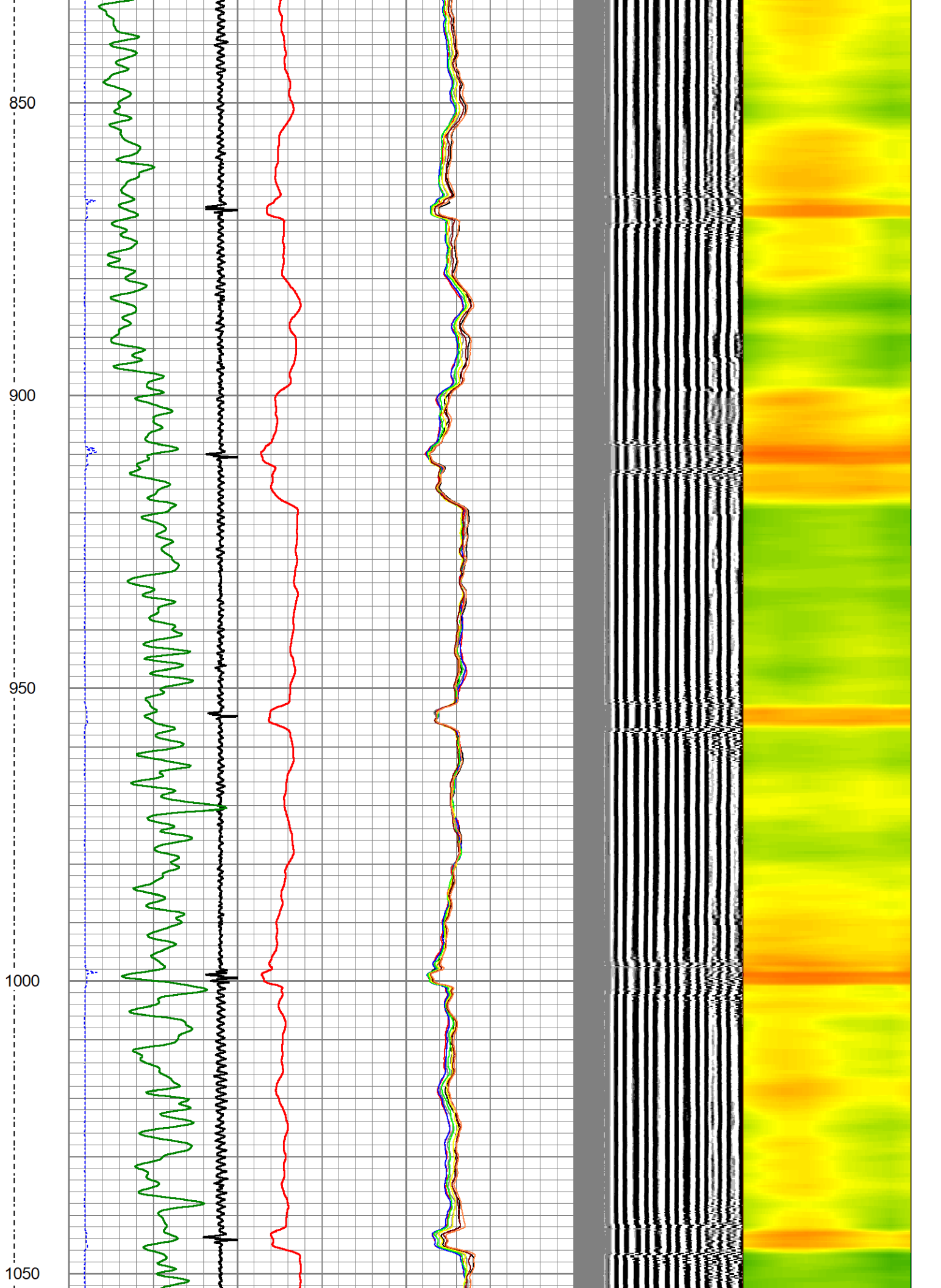


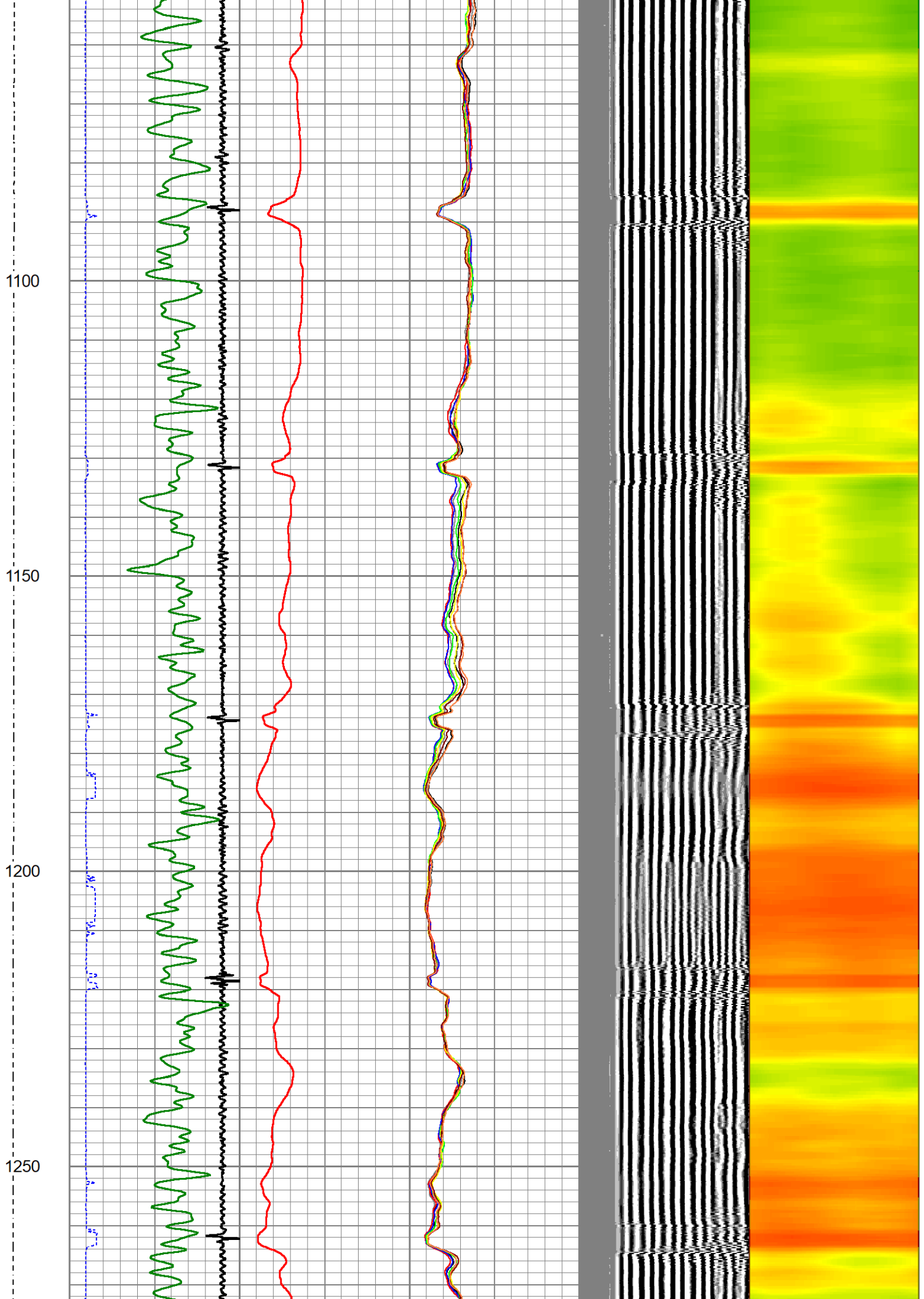


400
450
500
550
600







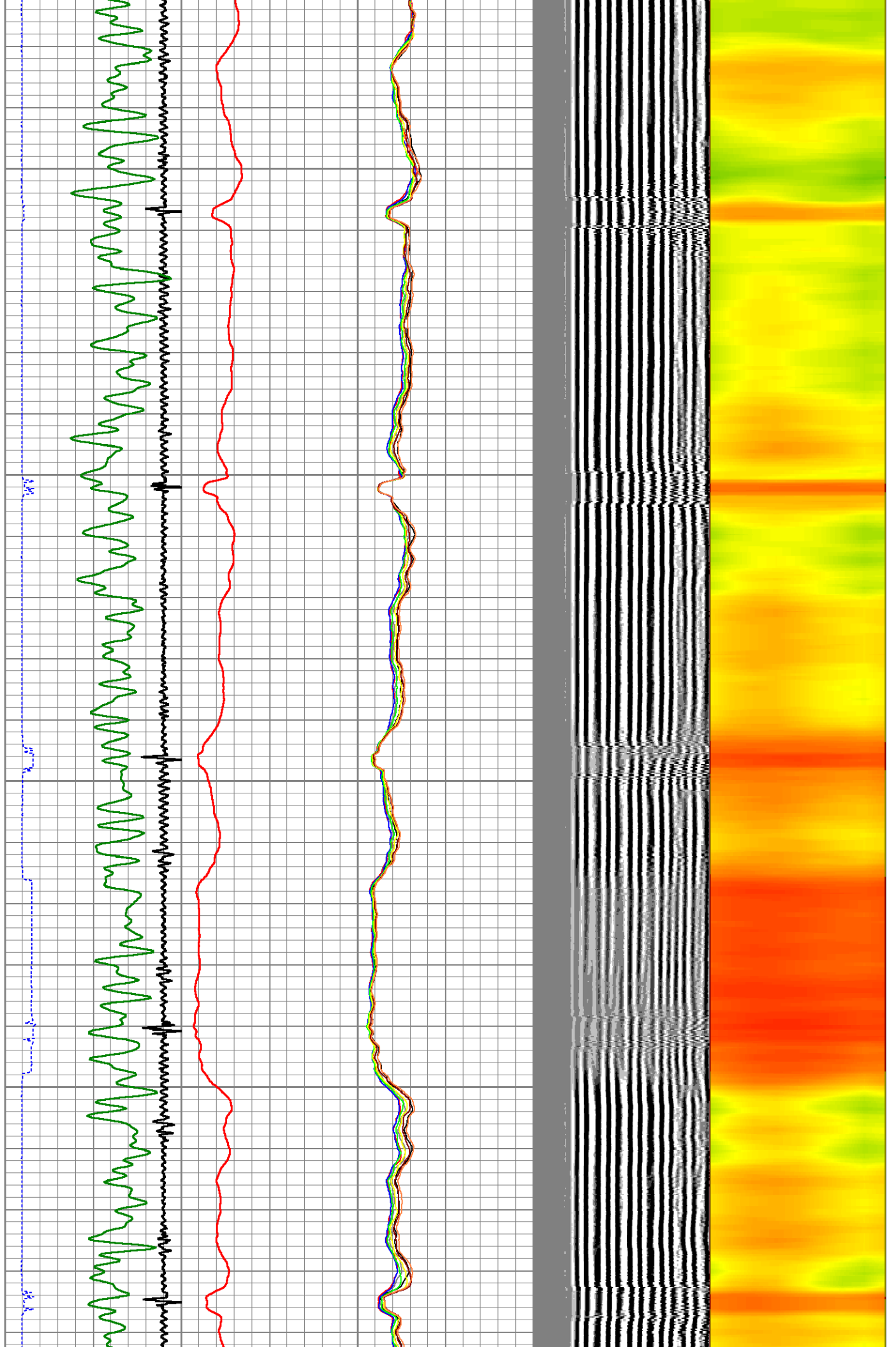


1300

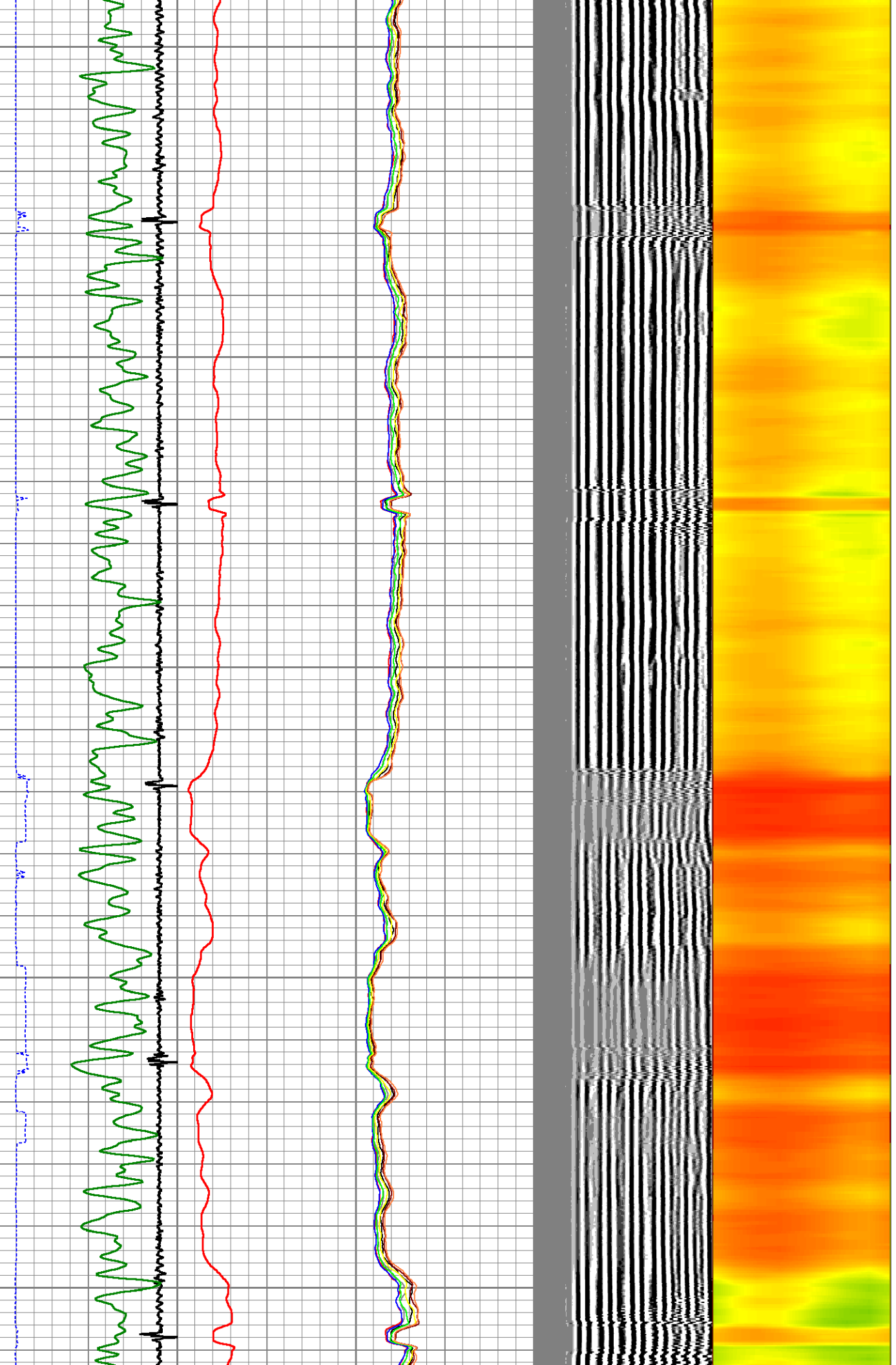
1350

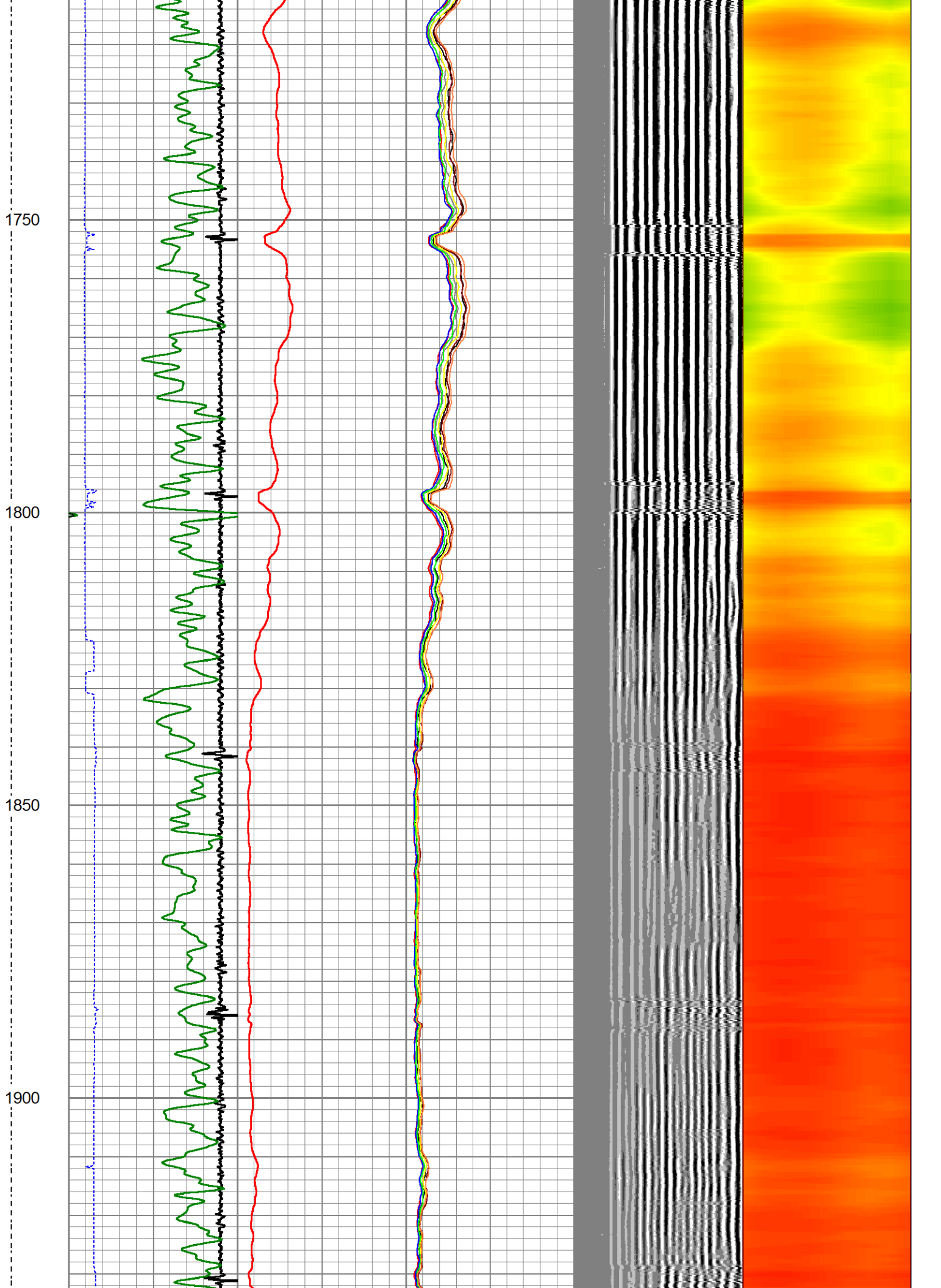
1400

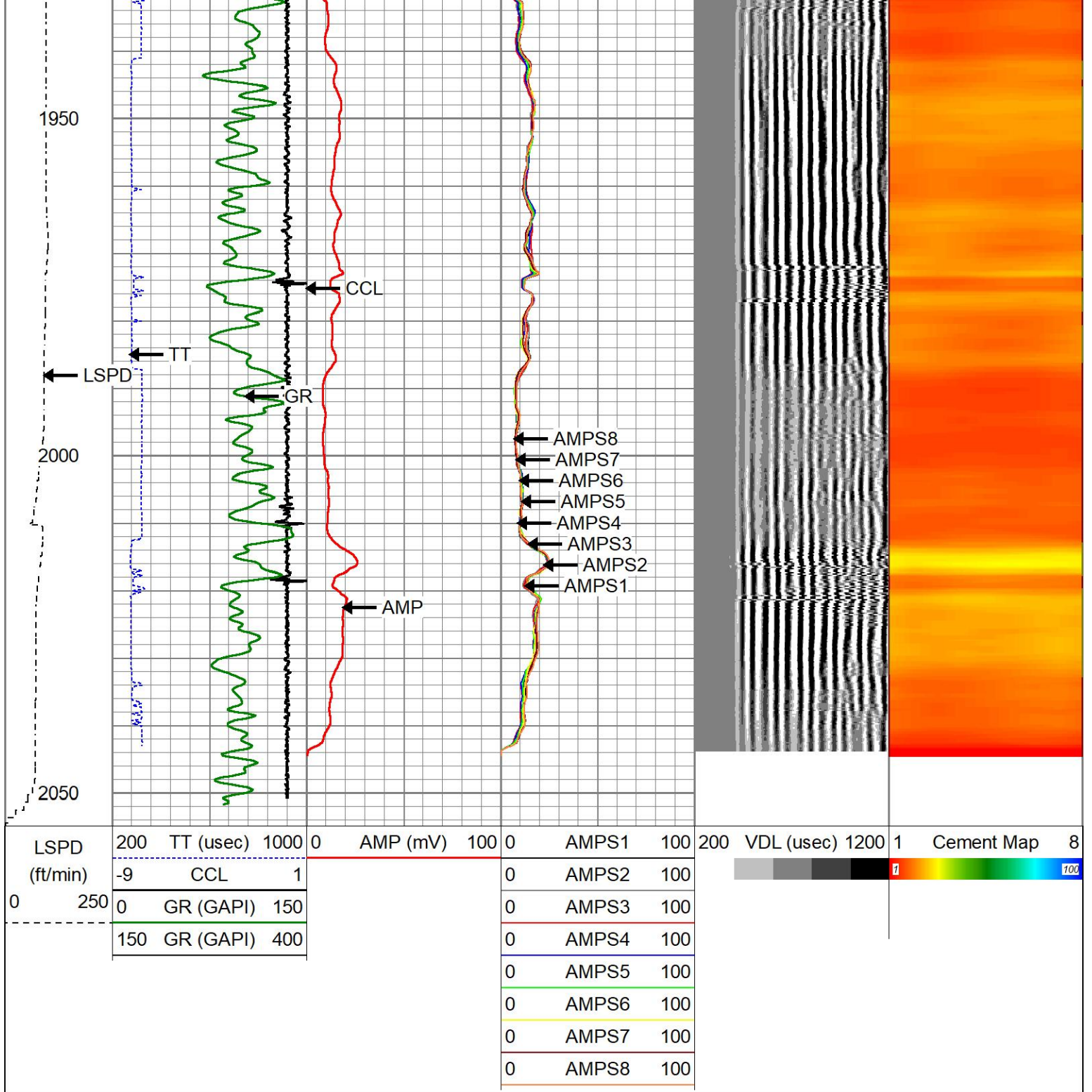
1450



1500
1550
1600
1650
1700







Calibration Report

Database File: cbl moss 14-16h.db
 Dataset Pathname: pass2
 Dataset Creation: Mon Jul 01 11:56:47 2024

Gamma Ray Calibration Report

Serial Number: 27GRL10-XXXX
 Tool Model: 27GRL10
 Performed: (Not Performed)

Calibrator Value: 1.0 GAPI

Background Reading: 0.0 cps
 Calibrator Reading: 1.0 cps

Sensitivity:

1.0000

GAPI/cps

Segmented Cement Bond Log Calibration Report

Serial Number: Greeley Ext Temp 7
Tool Model: 27SBT10

Calibration Casing Diameter: 7.000 in
Calibration Depth: 191.007 ft

Master Calibration, performed Mon Jun 17 12:47:37 2024:

	Raw (v)		Calibrated (mv)		Results	
	Zero	Cal	Zero	Cal	Gain	Offset
3'	-0.001	1.021	0.800	62.165	60.065	0.863
CAL	-0.001	1.015				
5'	-0.001	0.914	0.800	62.165	67.061	0.881
SUM						
S1	-0.001	1.002	0.000	62.165	61.998	0.067
S2	-0.001	1.019	0.000	62.165	60.949	0.067
S3	-0.001	1.026	0.000	62.165	60.513	0.071
S4	-0.001	1.027	0.000	62.165	60.448	0.072
S5	-0.001	1.029	0.000	62.165	60.331	0.072
S6	-0.001	1.031	0.000	62.165	60.247	0.062
S7	-0.001	1.024	0.000	62.165	60.645	0.067
S8	-0.001	0.987	0.000	62.165	62.929	0.065

Internal Reference Calibration, performed (Not Performed):

	Raw (v)		Calibrated (v)		Results	
	Zero	Cal	Zero	Cal	Gain	Offset
CAL	0.000	0.000	-0.001	1.015	1.000	0.000

Air Zero Calibration, performed Mon Jul 1 11:33:40 2024:

	Raw (v)		Calibrated (v)		Results	
	Zero		Zero		Gain	Offset
3'	0.002		0.000			-0.003
5'	0.003		0.000			-0.004
SUM						
S1	0.001		0.000			-0.002
S2	0.002		0.000			-0.003
S3	0.002		0.000			-0.003
S4	0.001		0.000			-0.003
S5	0.002		0.000			-0.003
S6	0.003		0.000			-0.004
S7	0.002		0.000			-0.003
S8	0.002		0.000			-0.003



Company CHEVRON
Well MOSS 14-16H
Field WATTENBERG
County WELD
State COLORADO

Country U.S.A.