



Date: September 2024		 K.P. KAUFFMAN COMPANY, INC.	K.P. Kauffman Company, Inc. 1700 Lincoln St. Suite 4550 Denver CO, 80202	K.P. Kauffman Company, Inc. Koch Tank Battery NENE, Section 6, Township 1 North, Range 68 West Weld County, CO	Soil Sampling Locations Map
Designed By:	KPK				
Drawn By:	KGK				



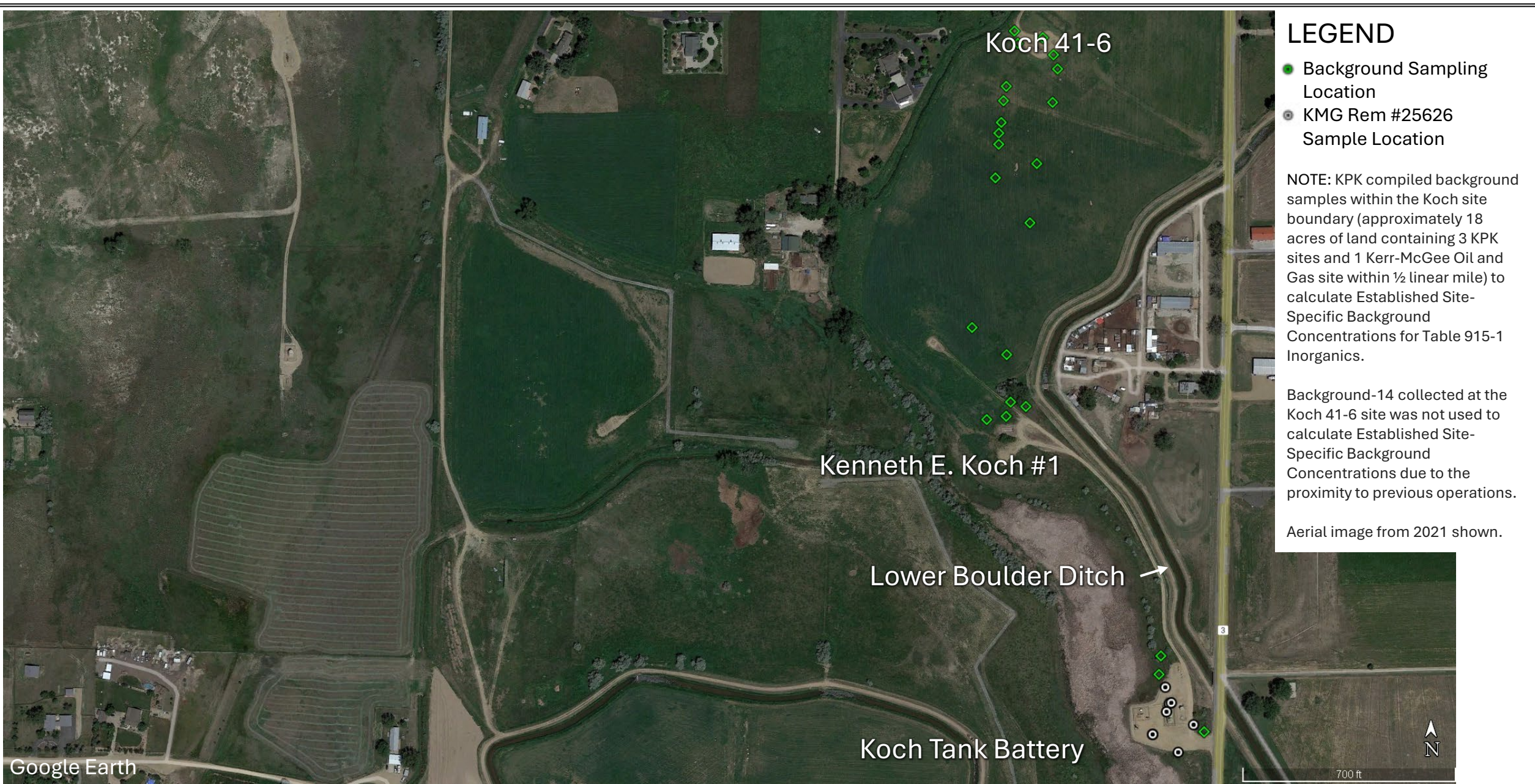
Date:	September 2024
Designed By:	KPK
Drawn By:	KGK



K.P. Kauffman Company, Inc.
1700 Lincoln St. Suite 4550
Denver CO, 80202

K.P. Kauffman Company, Inc.
Koch Tank Battery
NENE, Section 6, Township 1 North, Range 68 West
Weld County, CO

Excavation Soil Sampling Locations Map



LEGEND

- Background Sampling Location
- KMG Rem #25626 Sample Location

NOTE: KPK compiled background samples within the Koch site boundary (approximately 18 acres of land containing 3 KPK sites and 1 Kerr-McGee Oil and Gas site within ½ linear mile) to calculate Established Site-Specific Background Concentrations for Table 915-1 Inorganics.

Background-14 collected at the Koch 41-6 site was not used to calculate Established Site-Specific Background Concentrations due to the proximity to previous operations.

Aerial image from 2021 shown.

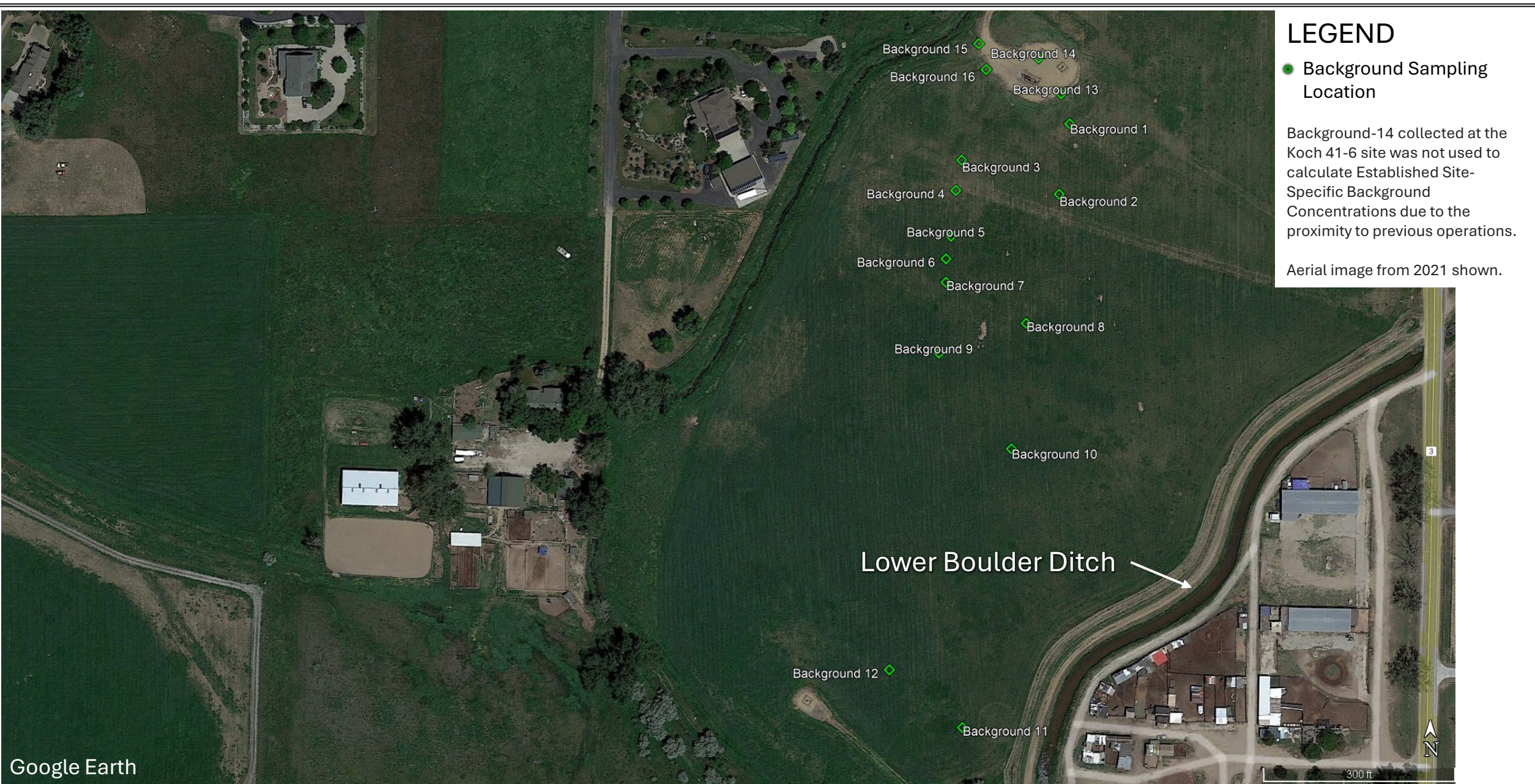
Date:	September 2024	 K.P. KAUFFMAN COMPANY, INC.	K.P. Kauffman Company, Inc. 1700 Lincoln St. Suite 4550 Denver CO, 80202	K.P. Kauffman Company, Inc. Koch 41-6, Kenneth E. Koch #1, and Koch Tank Battery Weld County, Colorado	Background Soil Sample Map
Designed By:	KPK				
Drawn By:	KGK				

LEGEND

● Background Sampling Location

Background-14 collected at the Koch 41-6 site was not used to calculate Established Site-Specific Background Concentrations due to the proximity to previous operations.

Aerial image from 2021 shown.



Google Earth

Date:	September 2024
Designed By:	KPK
Drawn By:	KGK



K.P. Kauffman Company, Inc.
1700 Lincoln St. Suite 4550
Denver CO, 80202

K.P. Kauffman Company, Inc.
Koch 41-6 Wellhead and Flowline

Weld County, Colorado

Background Soil Sample Map



LEGEND

● Background Sampling Location

Aerial image from 2021 shown.

Date:	September 2024	 K.P. KAUFFMAN COMPANY, INC.	K.P. Kauffman Company, Inc. 1700 Lincoln St. Suite 4550 Denver CO, 80202	K.P. Kauffman Company, Inc. Kenneth E. Koch #1 Wellhead and Flowline	Background Soil Sample Map
Designed By:	KPK				
Drawn By:	KGK				
				Weld County, Colorado	



LEGEND

- Background Sampling Location
- ⦿ KMG Rem #25626 Sample Location

Aerial image from 2021 shown.

Google Earth

Date:	September 2024
Designed By:	KPK
Drawn By:	KGK



K.P. Kauffman Company, Inc.
1700 Lincoln St. Suite 4550
Denver CO, 80202

K.P. Kauffman Company, Inc.
Koch Tank Battery

Weld County, Colorado

Background Soil Sample Map