

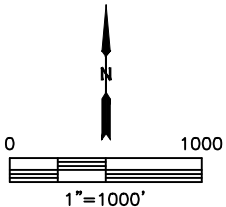
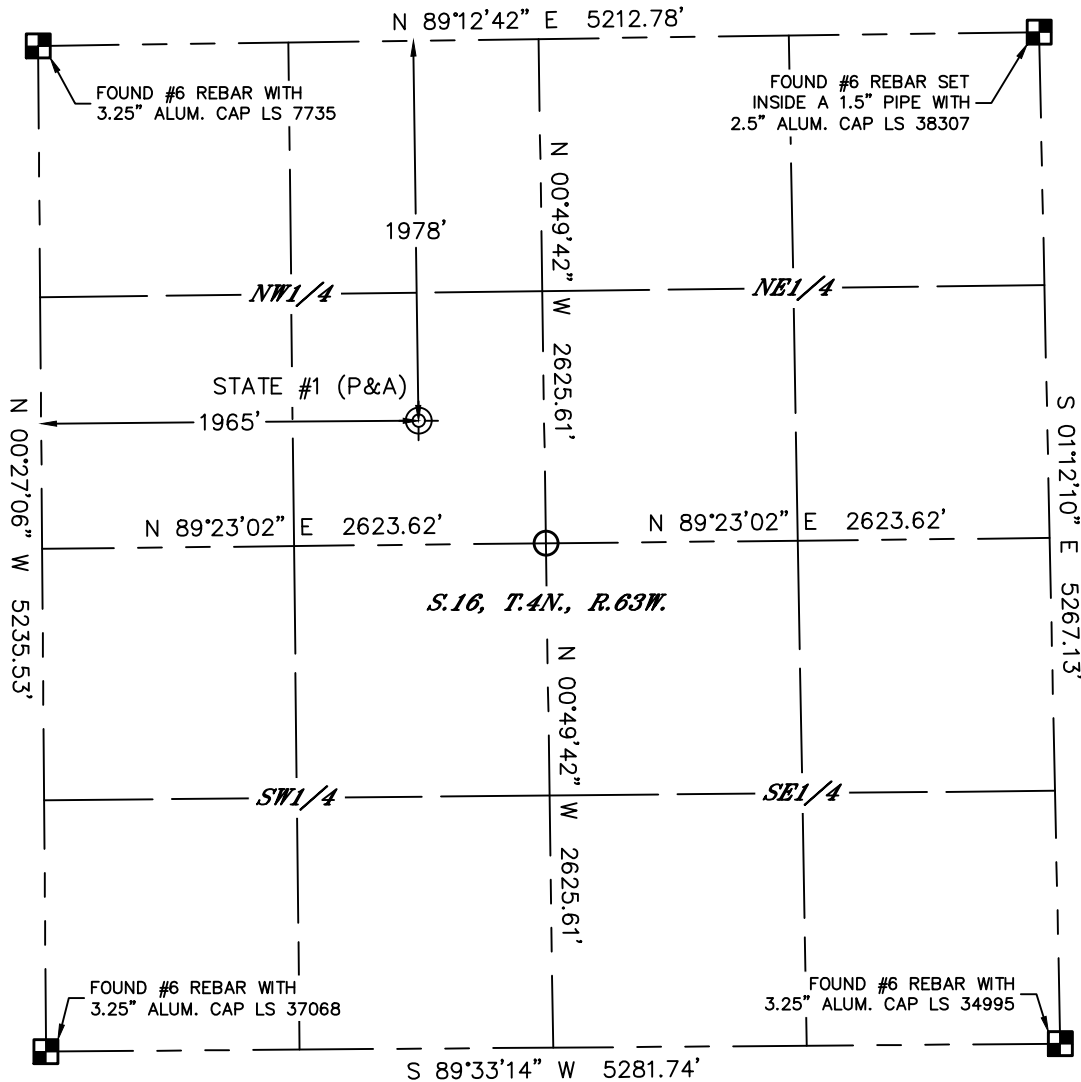


Lat40°, Inc. 6250 W. 10th Street, Unit 2, Greeley, CO 970-515-5294

# PLUGGED AND ABANDONED WELL EXHIBIT

STATE #1

SECTION: 16  
TOWNSHIP: 4N  
RANGE: 63W  
6TH. P.M.  
WELD COUNTY, CO



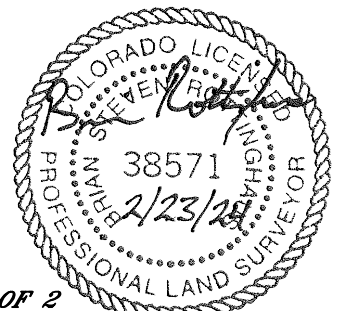
CLIENT: CHEVRON ROCKIES BUSINESS UNIT				LANDMAN: KOLT MCDANIEL					
INSTRUMENT OPERATOR: SCOTT SHERARD				SURVEY DATE: 2/19/2024		SURFACE USE: RANGELAND			
SHL FOOTAGE		SHL LAT °	SHL LONG °	SHL PDOP	SHL ELEV (FT.)	SHL 1/4/1/4	SHL S-T-R		
1978	FNL	1965	FWL	40.31394	-104.44544	1.2	4801	SENV	16-4-63
DESCRIPTION: FOUND CAPPED 4" PIPE 6" BELOW EXISTING SURFACE. ALSO FOUND OTHER SMALLER METAL DETECTOR RINGS IN THE AREA.									

## NOTE:

- 1) Bearings shown are Grid Bearings of the Colorado State Plane Coordinate System, North Zone, North American Datum 1983. The lineal dimensions as contained herein are based upon the "U.S. Survey Foot."
- 2) Distances to section lines measured at 90 degrees from said section lines.
- 3) Ground elevations are based on an observed GPS elevation (NAVD 1988 DATUM).
- 4) Latitude and Longitude shown are (NAD 83 DATUM).
- 5) Sectional data as shown hereon is from previous surveys and was not verified for this P&A Exhibit.
- 6) This map does not represent a boundary survey.

## LEGEND

- = ALIQUOT MONUMENT AS DESCRIBED
- = CALCULATED POSITION
- = ABANDONED WELL



**SHEET 1 OF 2**

Brian S. Rottinghaus—On behalf of Lat40°, Inc.  
Colorado Licensed Professional Land Surveyor No. 38571  
DATE: 2/23/2024  
PROJECT#: 2024054



Lat40°, Inc. 6250 W. 10th Street, Unit 2, Greeley, CO 970-515-5294

## PLUGGED AND ABANDONED WELL EXHIBIT

STATE #1

SECTION: 16  
TOWNSHIP: 4N  
RANGE: 63W  
6TH. P.M.  
WELD COUNTY, CO  
DATE: 2/19/2024



VIEW NORTH



VIEW WEST



VIEW EAST



VIEW SOUTH