

T2N, R63W

SURFACE HOLE LOCATION: NAD 83
GROUND ELEVATION= 4860.8'
LATITUDE= 40.121602°
LONGITUDE= -104.477694°
LATITUDE= 40°07'17.769"
LONGITUDE= -104°28'39.698"

LANDING POINT: NAD 83
LATITUDE= 40.134854°
LONGITUDE= -104.472598°
LATITUDE= 40°08'05.475"
LONGITUDE= -104°28'21.355"

BOTTOM OF PRODUCTION ZONE: NAD 83
LATITUDE= 40.103375°
LONGITUDE= -104.472585°
LATITUDE= 40°06'12.150"
LONGITUDE= -104°28'21.306"

BOTTOM HOLE LOCATION: NAD 83
LATITUDE= 40.103128°
LONGITUDE= -104.472585°
LATITUDE= 40°06'11.261"
LONGITUDE= -104°28'21.307"

CERTIFICATE OF SURVEYOR:

THIS IS TO CERTIFY THAT THE ABOVE PLATS WERE PREPARED FROM FIELD NOTES OF ACTUAL SURVEYS MADE BY ME OR UNDER MY SUPERVISION AND THAT THE SAME ARE TRUE AND CORRECT TO THE BEST OF MY KNOWLEDGE AND BELIEF. THIS CERTIFICATE DOES NOT REPRESENT A LAND SURVEY PLAT OR IMPROVEMENT SURVEY PLAT AS DEFINED BY C.R.S. 38-51-102 AND CANNOT BE RELIED UPON TO DETERMINE OWNERSHIP.

Randall K. French
38512
9/20/24
RANDALL K. FRENCH
PROFESSIONAL LAND SURVEYOR
COLORADO REGISTRATION NUMBER 38512

NOTICE:
ACCORDING TO COLORADO STATE LAW YOU MUST COMMENCE ANY LEGAL ACTION BASED UPON ANY DEFECT IN THIS SURVEY WITHIN THREE YEARS OF YOUR FIRST DISCOVERY OF SUCH DEFECT. IN NO EVENT MAY ANY ACTION BASED UPON ANY DEFECT IN THIS SURVEY BE COMMENCED MORE THAN TEN YEARS FROM THE DATE ON THE CERTIFICATION SHOWN HEREON.

WELL PAD - KBL 02N-63W-19

KBL 1830-19H
WELL LOCATION CERTIFICATE
1805' FSL & 1916' FEL (NWSE) (SURFACE HOLE LOCATION)
LOCATED IN SECTION 19
1356' FSL & 480' FEL (NESE) (LANDING POINT)
LOCATED IN SECTION 18
460' FSL & 480' FEL (SESE) (BOTTOM OF PRODUCTION ZONE)
370' FSL & 480' FEL (SESE) (BOTTOM HOLE LOCATION)
LOCATED IN SECTION 30
T2N, R63W, 6TH P.M.
WELD COUNTY, COLORADO



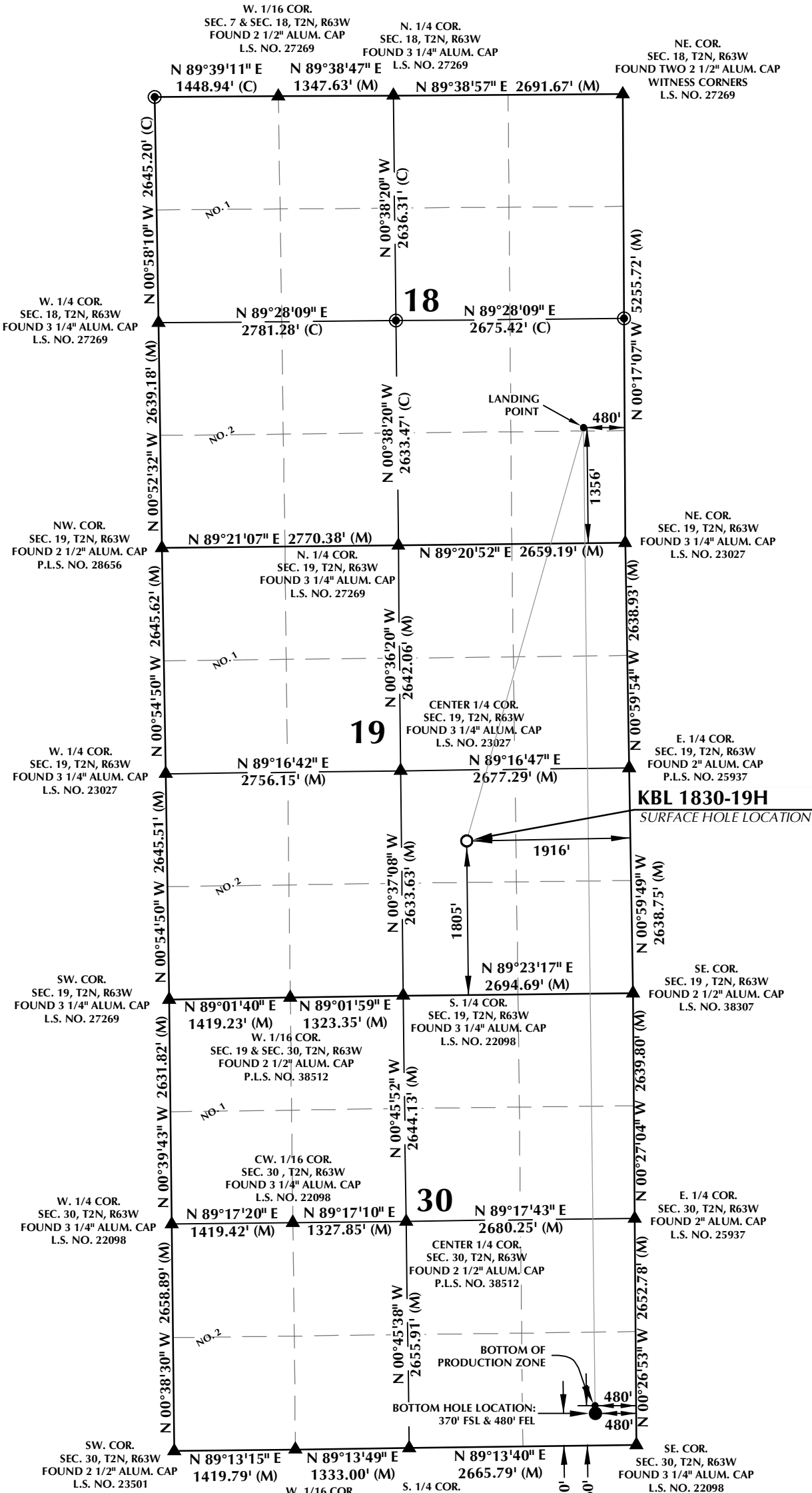
1125 17th Street, Suite 550
Denver, Colorado 80202



CONSULTING, LLC

SHERIDAN OFFICE
1095 Saberton Avenue
Sheridan, Wyoming 82801
Phone 307-674-0609
LOVELAND OFFICE
6706 North Franklin Avenue
Loveland, Colorado 80538
Phone 970-776-4331

DRAFTED BY:	SJM	CHECKED BY:	RKF
DATE DRAFTED:	9/10/24	DATE SURVEYED:	9/4/24
REVISED:	9/20/24	FILE NAME:	17-193



NOTES:

- ▲ INDICATES SECTION CORNER.
- INDICATES CALCULATED CORNER.
- ELEVATION BASED ON NAVD88 (GEOID12B).
- BASIS OF BEARINGS DERIVED FROM COLORADO COORDINATE SYSTEM OF 1983, NORTH ZONE.
- ALL MEASURED DISTANCES ARE GRID.
- COMBINED SCALE FACTOR: .99972908 CALCULATED FROM THE SE. CORNER OF SECTION 18, T2N, R63W.
- OPERATOR: HAYDEN BELLENDIR / PDOP = 2.2
- WELL FOOTAGES ARE MEASURED AT RIGHT ANGLES TO THE SECTION LINES.