

T2N, R63W

**SURFACE HOLE LOCATION: NAD 83**  
GROUND ELEVATION= 4861.4'  
LATITUDE= 40.121603°  
LONGITUDE= -104.477801°  
LATITUDE= 40°07'17.772"  
LONGITUDE= -104°28'40.084"

**LANDING POINT: NAD 83**  
LATITUDE= 40.137095°  
LONGITUDE= -104.477935°  
LATITUDE= 40°08'13.541"  
LONGITUDE= -104°28'40.565"

**BOTTOM OF PRODUCTION ZONE: NAD 83**  
LATITUDE= 40.103368°  
LONGITUDE= -104.477733°  
LATITUDE= 40°06'12.123"  
LONGITUDE= -104°28'39.839"

**BOTTOM HOLE LOCATION: NAD 83**  
LATITUDE= 40.103120°  
LONGITUDE= -104.477732°  
LATITUDE= 40°06'11.234"  
LONGITUDE= -104°28'39.834"

CERTIFICATE OF SURVEYOR:

THIS IS TO CERTIFY THAT THE ABOVE PROPERTY WAS PREPARED FROM FIELD NOTES OF ACTUAL SURVEYS MADE BY ME OR UNDER MY SUPERVISION AND THAT THE SAME ARE TRUE AND CORRECT TO THE BEST OF MY KNOWLEDGE AND BELIEF. THIS CERTIFICATE DOES NOT REPRESENT A LAND SURVEY THAT OR IMPROVEMENT SURVEY PLAT AS DEFINED BY C.R.S. 38-51-102 AND CANNOT BE RELIED UPON TO DETERMINE OWNERSHIP.

**RANDALL K. FRENCH**  
PROFESSIONAL LAND SURVEYOR  
COLORADO REGISTRATION NUMBER 38512  
9/10/24

NOTICE:  
ACCORDING TO COLORADO STATE LAW YOU MUST COMMENCE ANY LEGAL ACTION BASED UPON ANY DEFECT IN THIS SURVEY WITHIN THREE YEARS OF YOUR FIRST DISCOVERY OF SUCH DEFECT. IN NO EVENT MAY ANY ACTION BASED UPON ANY DEFECT IN THIS SURVEY BE COMMENCED MORE THAN TEN YEARS FROM THE DATE ON THE CERTIFICATION SHOWN HEREON.

WELL PAD - KBL 02N-63W-19

**KBL 1830-17H**  
**WELL LOCATION CERTIFICATE**  
1805' FSL & 1946' FEL (NWSE) (SURFACE HOLE LOCATION)  
LOCATED IN SECTION 19  
2172' FSL & 1977' FEL (NWSE) (LANDING POINT)  
LOCATED IN SECTION 18  
460' FSL & 1920' FEL (SWSE) (BOTTOM OF PRODUCTION ZONE)  
370' FSL & 1919' FEL (SWSE) (BOTTOM HOLE LOCATION)  
LOCATED IN SECTION 30  
T2N, R63W, 6TH P.M.  
WELD COUNTY, COLORADO



1125 17th Street, Suite 550  
Denver, Colorado 80202

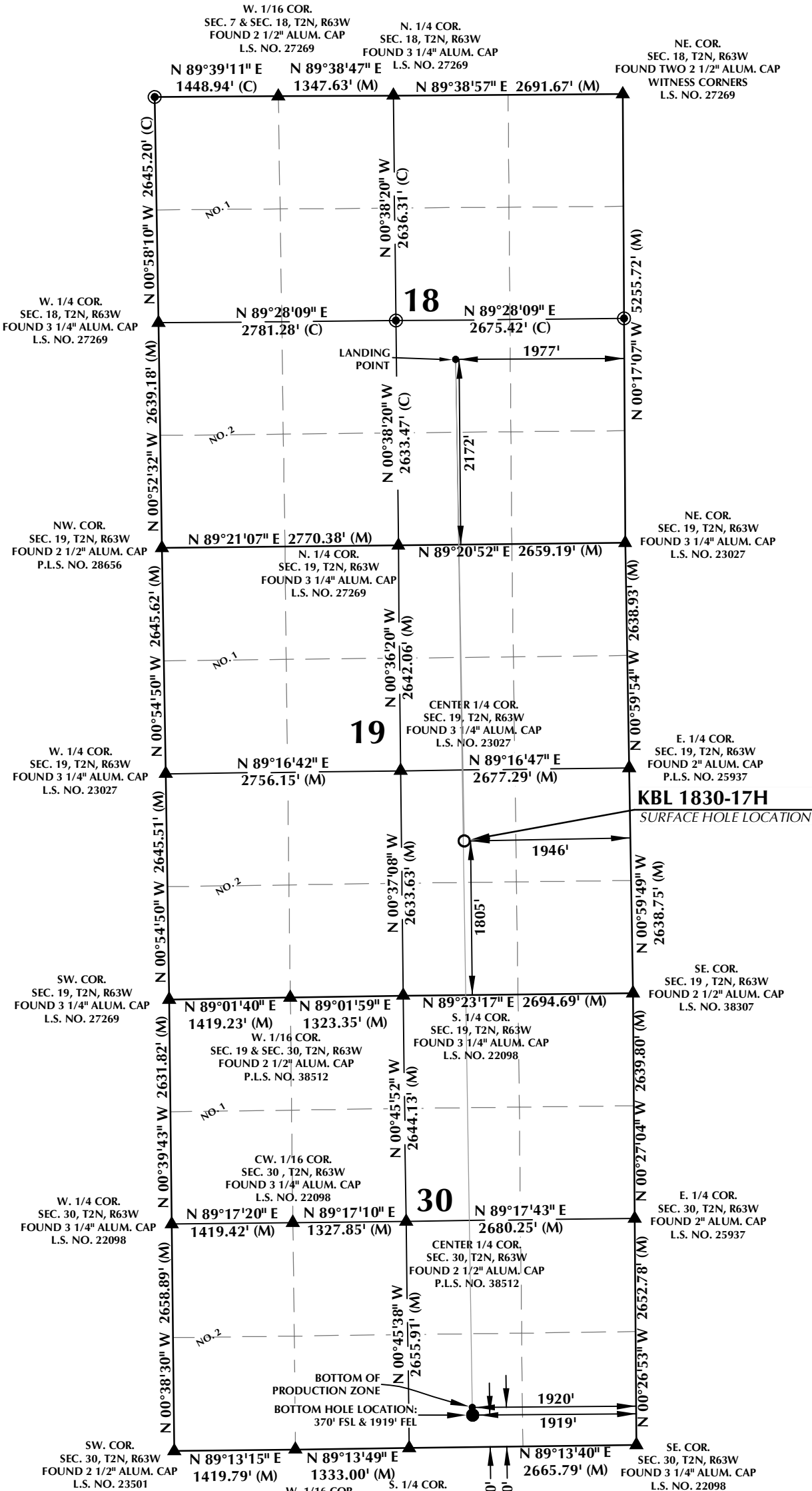


CONSULTING, LLC

**SHERIDAN OFFICE**  
1095 Saberton Avenue  
Sheridan, Wyoming 82801  
Phone 307-674-0609

**LOVELAND OFFICE**  
6706 North Franklin Avenue  
Loveland, Colorado 80538  
Phone 970-776-4331

DRAFTED BY:	SJM	CHECKED BY:	RKF
DATE DRAFTED:	9/10/24	DATE SURVEYED:	9/4/24
REVISED:		FILE NAME:	17-193



NOTES:

- ▲ INDICATES SECTION CORNER.
- INDICATES CALCULATED CORNER.
- ELEVATION BASED ON NAVD88 (GEOID12B).
- BASIS OF BEARINGS DERIVED FROM COLORADO COORDINATE SYSTEM OF 1983, NORTH ZONE.
- ALL MEASURED DISTANCES ARE GRID.
- COMBINED SCALE FACTOR: .99972908 CALCULATED FROM THE SE. CORNER OF SECTION 18, T2N, R63W.
- OPERATOR: HAYDEN BELLENDIR / PDOP = 2.1
- WELL FOOTAGES ARE MEASURED AT RIGHT ANGLES TO THE SECTION LINES.