



## **FIGURES**

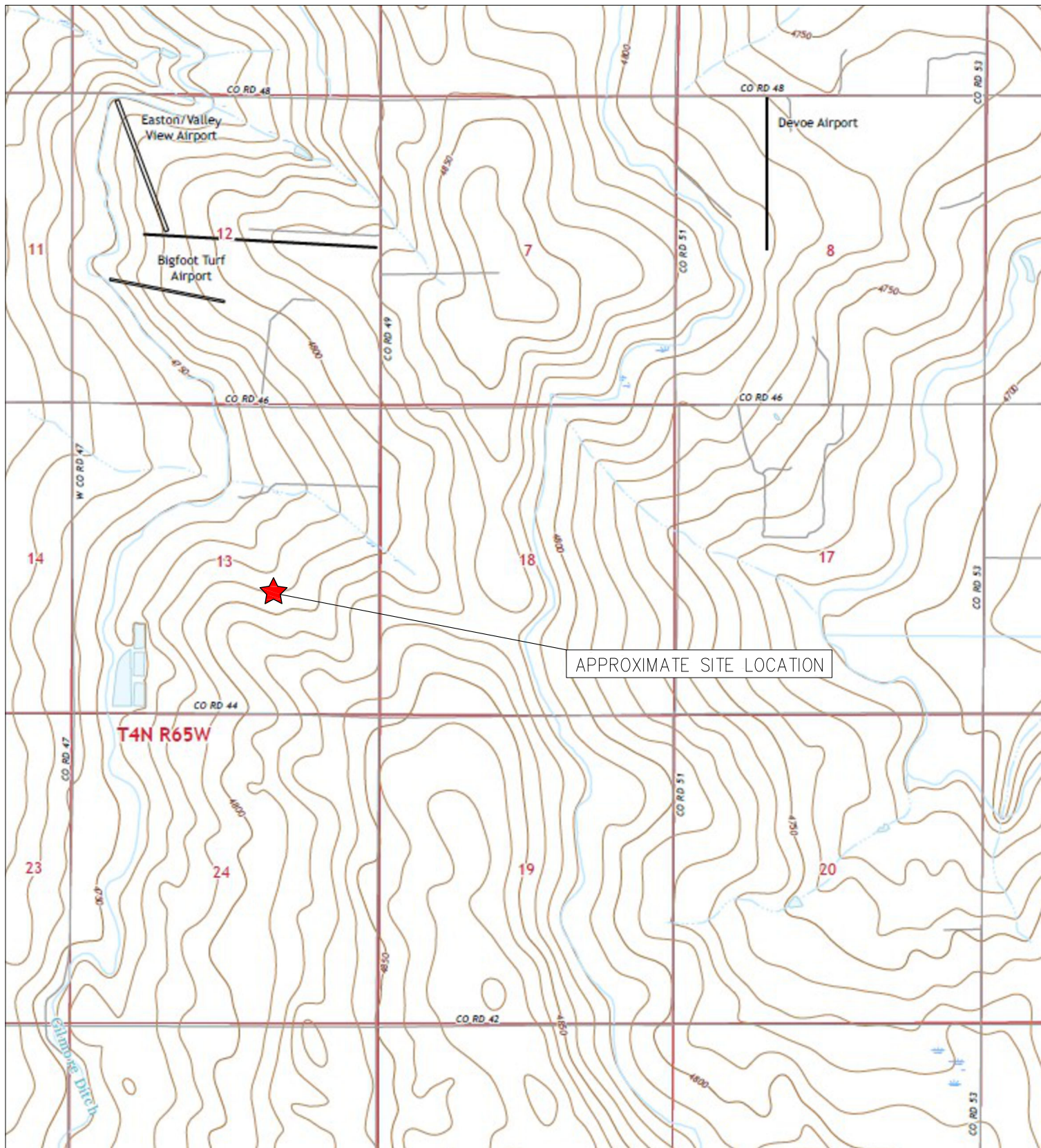
**Figure 1: Topographic Site Location Map**

**Figure 2: Aerial Site Location Map**

**Figure 3: Monitoring Well Soil Analytical Map**

**Figure 4: Groundwater Analytical Map (10/17/23)**

**Figure 5: Groundwater Elevation Map (10/17/23)**



TOPOGRAPHIC SITE LOCATION MAP  
 HUNTSMAN G #13-10  
 CLOSURE ASSESSMENT  
 40.310797 / -104.608747  
 NW¼ SE¼ SEC.13 T4N R65W 6PM  
 WELD COUNTY, COLORADO  
 API # 05-123-14664  
 REMEDIATION # 25096



**EAGLE**  
 ENVIRONMENTAL  
 CONSULTING, LLC

8000 W 44th Ave, Wheat Ridge, CO 80033  
 Ph: 303-433-0479 • F: 303-325-5449

SOURCE: USGS 7.5 MINUTE TOPOGRAPHIC MAP,  
 VALLEY VIEW SCHOOL, CO QUADRANGLE 2022

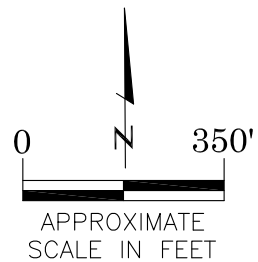
FIGURE 1





# LEGEND

- FORMER HUNTSMAN G #13-10 WELLHEAD (PLUGGED AND ABANDONED)
- ASSOCIATED SEPARATOR
- APPROXIMATE FLOWLINE LOCATION



## AERIAL SITE LOCATION MAP

HUNTSMAN G #13-10  
CLOSURE ASSESSMENT  
40.310797 / -104.608747  
NW¼ SE¼ SEC.13 T4N R65W 6PM  
WELD COUNTY, COLORADO  
API # 05-123-14664  
REMEDIAL # 25096

DRAWN BY:

GEC

FIG. NO.

2



**EAGLE**  
ENVIRONMENTAL  
CONSULTING, LLC  
8000 W 44th Ave, Wheat Ridge, CO 80033  
Ph: 303-433-0479 • F: 303-325-5449



# LEGEND

— WELLHEAD ASSESSMENT BOUNDARIES

⊕ APPROXIMATE MONITORING WELL LOCATIONS

## PARAMETERS

SAMPLE LOCATION  
DATE  
DEPTH (FEET)  
B = BENZENE (mg/kg)  
T = TOLUENE (mg/kg)  
E = ETHYLBENZENE (mg/kg)  
X = TOTAL XYLENES (mg/kg)  
G = TPH-GRO (mg/kg)  
D = TPH-DRO (mg/kg)  
R = TPH-RRO (mg/kg)  
1,2,4-TMB = 1,2,4 TRIMETHYLBENZENE (mg/kg)  
1,3,5-TMB = 1,3,5 TRIMETHYLBENZENE (mg/kg)  
POLYCYCLIC AROMATIC HYDROCARBONS (PAHs) (mg/kg)

mg/kg = MILLIGRAMS PER KILOGRAM

(BRL) = ALL CONCENTRATIONS BELOW REGULATORY LIMITS

TPH-GRO = TOTAL PETROLEUM HYDROCARBONS - GASOLINE RANGE ORGANICS

TPH-DRO = TOTAL PETROLEUM HYDROCARBONS - DIESEL RANGE ORGANICS

TPH-RRO = TOTAL PETROLEUM HYDROCARBONS - RESIDUAL RANGE ORGANICS

NOTES:  
VALUES PRESENTED IN **BOLD** EXCEED ECMC TABLE 915-1 REGULATORY LIMITS.

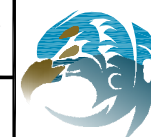
ECMC = ENERGY & CARBON MANAGEMENT COMMISSION

## MONITORING WELL SOIL ANALYTICAL MAP

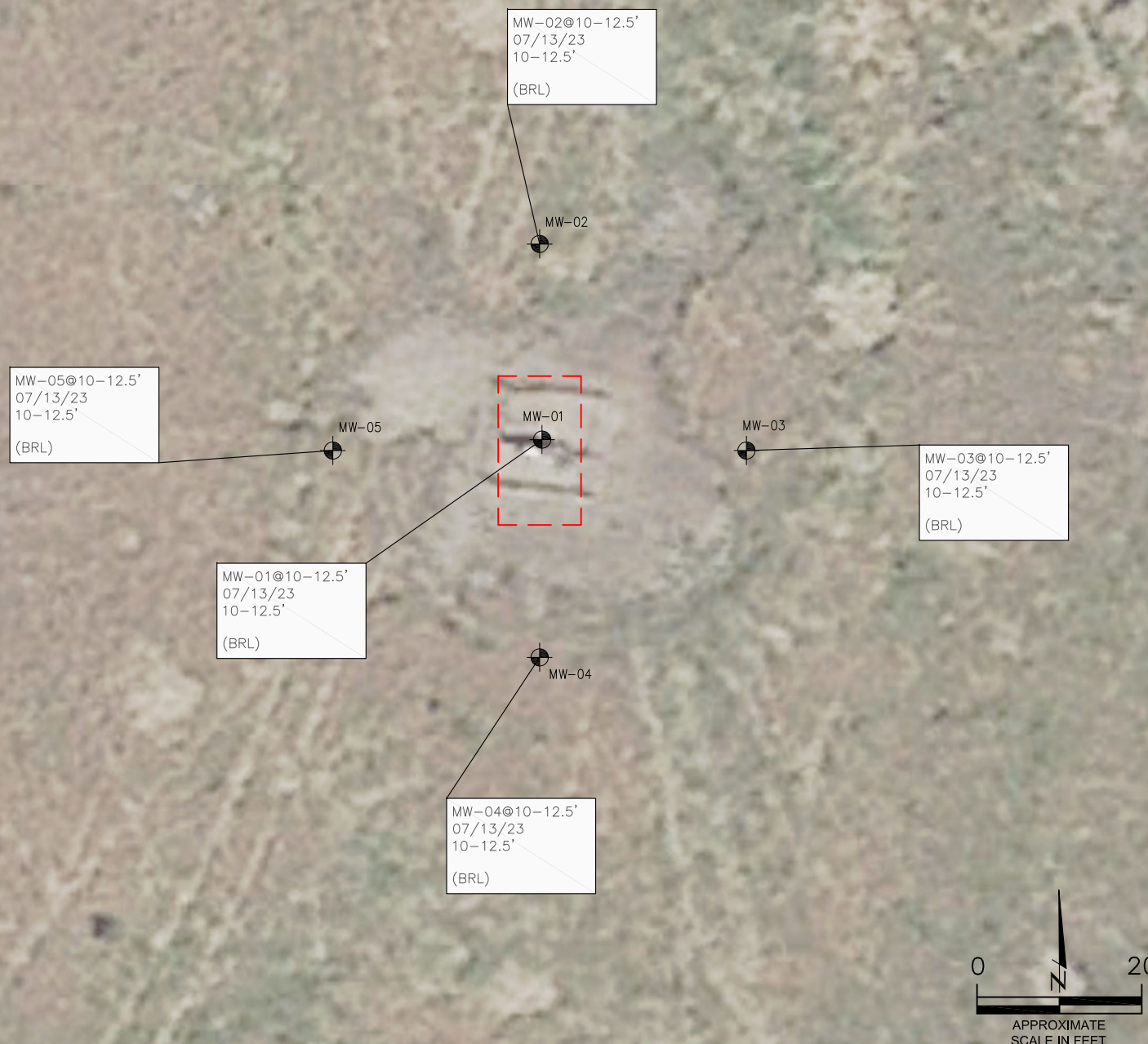
HUNTSMAN G #13-10  
CLOSURE ASSESSMENT  
40.310797 / -104.608747  
NW¼ SE¼ SEC.13 T4N R65W 6PM  
WELD COUNTY, COLORADO  
API # 05-123-14664  
REMEDIAL # 25096

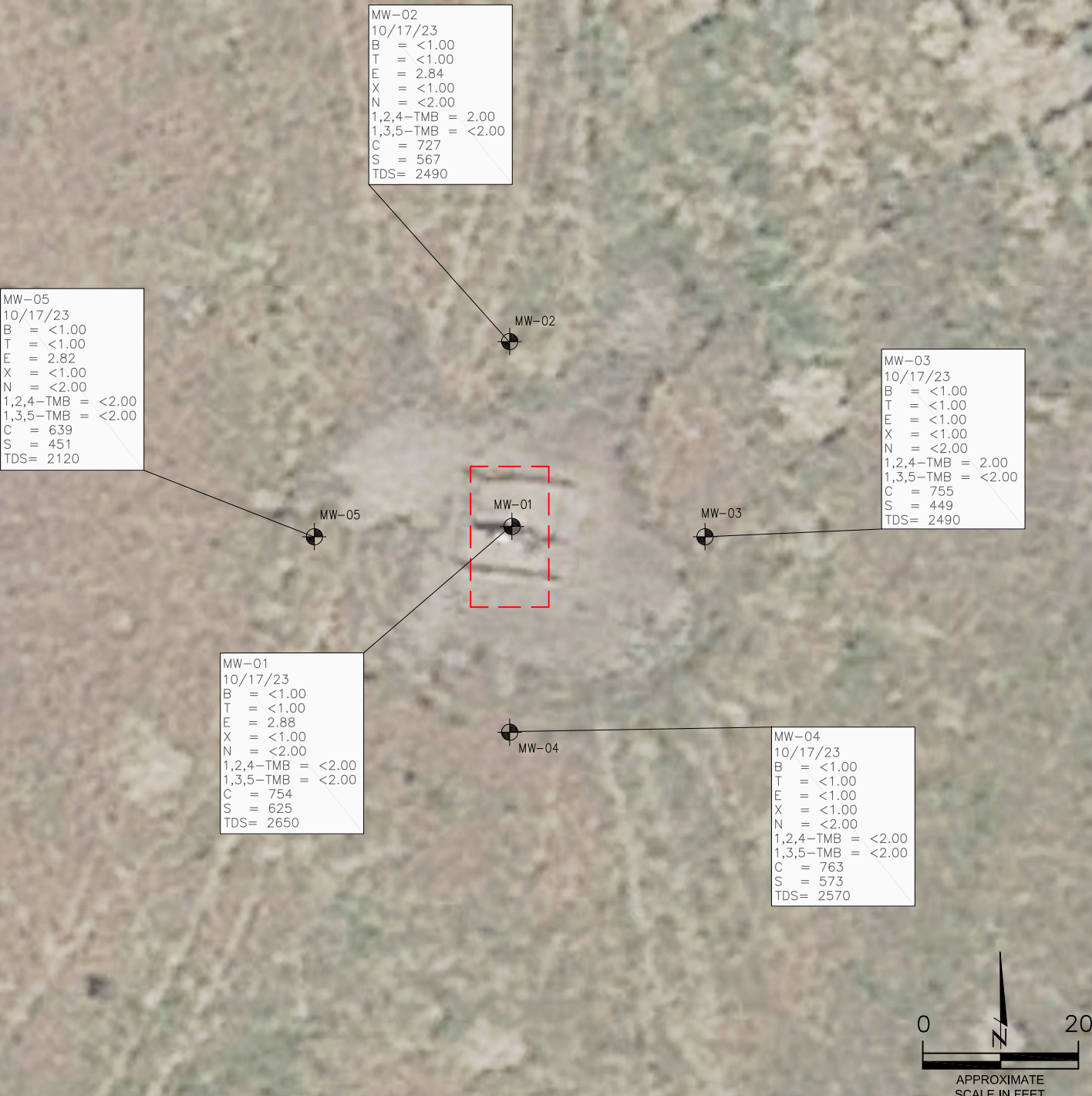
FIGURE NO.  
3

DRAWN BY:  
GEC



**EAGLE**  
ENVIRONMENTAL  
CONSULTING, LLC  
8000 W 44th Ave, Wheat Ridge, CO 80033  
Ph: 303-433-0479 • F: 303-325-5449





MW-02  
10/17/23  
B = <1.00  
T = <1.00  
E = 2.84  
X = <1.00  
N = <2.00  
1,2,4-TMB = 2.00  
1,3,5-TMB = <2.00  
C = 727  
S = 567  
TDS= 2490

MW-05  
10/17/23  
B = <1.00  
T = <1.00  
E = 2.82  
X = <1.00  
N = <2.00  
1,2,4-TMB = <2.00  
1,3,5-TMB = <2.00  
C = 639  
S = 451  
TDS= 2120

MW-03  
10/17/23  
B = <1.00  
T = <1.00  
E = <1.00  
X = <1.00  
N = <2.00  
1,2,4-TMB = 2.00  
1,3,5-TMB = <2.00  
C = 755  
S = 449  
TDS= 2490

MW-01  
10/17/23  
B = <1.00  
T = <1.00  
E = 2.88  
X = <1.00  
N = <2.00  
1,2,4-TMB = <2.00  
1,3,5-TMB = <2.00  
C = 754  
S = 625  
TDS= 2650

MW-04  
10/17/23  
B = <1.00  
T = <1.00  
E = <1.00  
X = <1.00  
N = <2.00  
1,2,4-TMB = <2.00  
1,3,5-TMB = <2.00  
C = 763  
S = 573  
TDS= 2570

LEGEND

- WELLHEAD ASSESSMENT BOUNDARIES
- ⊙ APPROXIMATE MONITORING WELL LOCATIONS

PARAMETERS

GROUNDWATER SAMPLE LOCATION  
DATE  
B = BENZENE (µg/L)  
T = TOLUENE (µg/L)  
E = ETHYLBENZENE (µg/L)  
X = TOTAL XYLENES (µg/L)  
N = NAPHTHALENE (µg/L)  
1,2,4-TMB = 1,2,4-TRIMETHYLBENZENE (µg/L)  
1,3,5-TMB = 1,3,5-TRIMETHYLBENZENE (µg/L)  
C = CHLORIDE (mg/L)  
S = SULFATE (mg/L)  
TDS= TOTAL DISSOLVED SOLIDS (mg/L)

µg/L = MICROGRAMS PER LITER  
mg/L = MILLIGRAMS PER LITER

NOTES:  
VALUES PRESENTED WITH A LESS THAN SYMBOL (<) DID NOT CONTAIN CONCENTRATIONS AT OR ABOVE THE LABORATORY REPORTING LIMIT.

VALUES PRESENTED IN **BOLD** EXCEED THE ECMC TABLE 915-1 REGULATORY LIMITS.

ECMC = ENERGY & CARBON MANAGEMENT COMMISSION

GROUNDWATER ANALYTICAL MAP  
(10/17/23)  
HUNTSMAN G #13-10  
CLOSURE ASSESSMENT  
40.310797 / -104.608747  
NW¼ SEC.13 T4N R65W 6PM  
WELD COUNTY, COLORADO  
API # 05-123-14664  
REMEDIAL # 25096

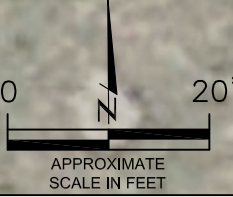
FIGURE NO.  
4

DRAWN BY:  
GEC

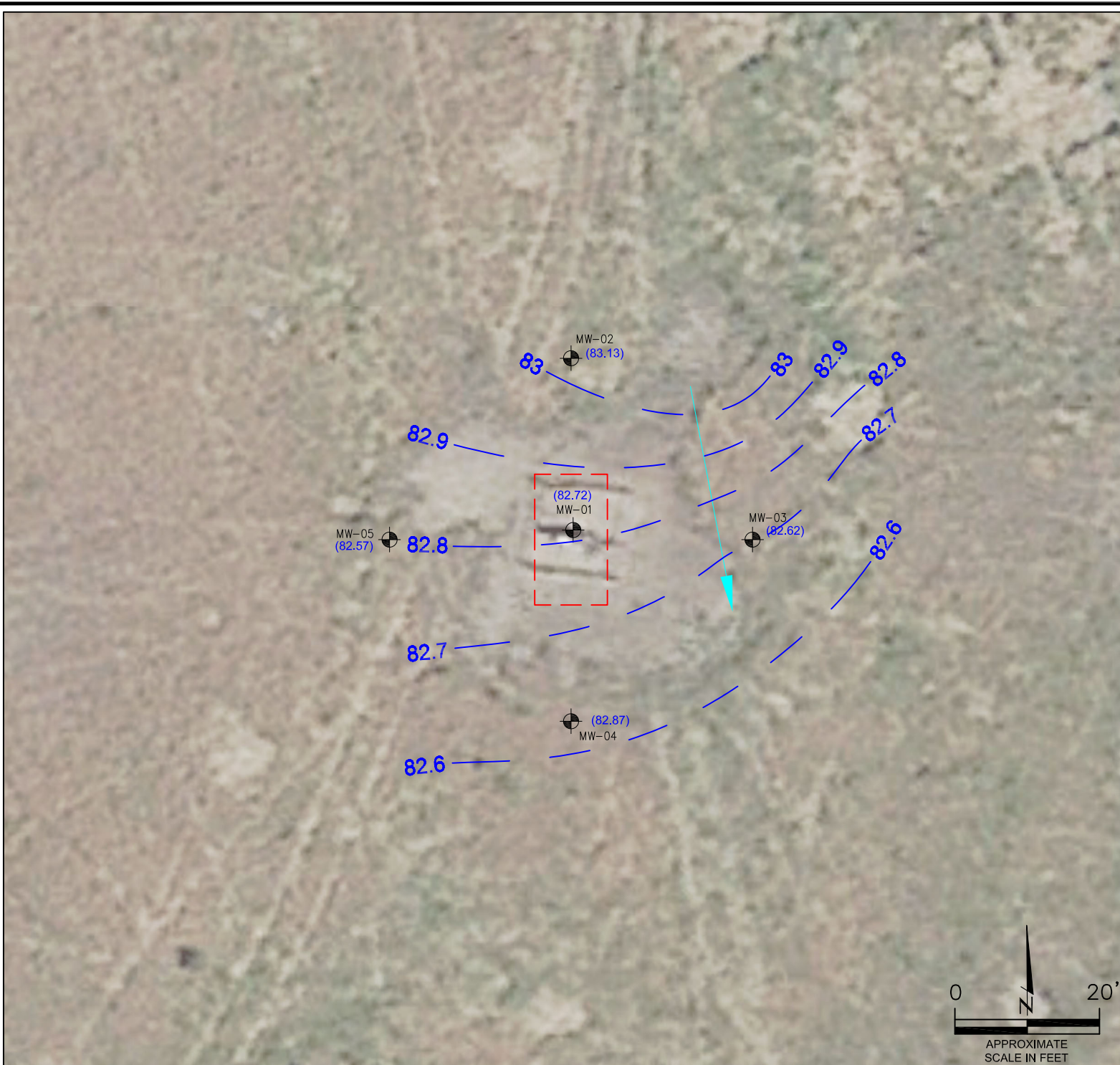


**EAGLE**  
ENVIRONMENTAL  
CONSULTING, LLC

8000 W 44th Ave, Wheat Ridge, CO 80033  
Ph: 303-433-0479 • F: 303-325-5449







**LEGEND**

- WELLHEAD ASSESSMENT BOUNDARIES
- APPROXIMATE MONITORING WELL LOCATIONS
- (92.94) RELATIVE GROUNDWATER ELEVATION (FT.)
- INFERRED GROUNDWATER ELEVATION CONTOUR (FT.)
- APPROXIMATE GROUNDWATER FLOW DIRECTION

FT. = FEET

NOTES:  
GROUNDWATER ELEVATION DATA WAS COLLECTED ON 10/17/23.

GROUNDWATER ELEVATION DATA COLLECTED FROM MONITORING WELLS MW-04 WAS NOT USED IN THE CONSTRUCTION OF INFERRED GROUNDWATER ELEVATION CONTOURS.

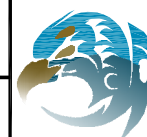
HYDRAULIC GRADIENT = 0.005 FT./FT.

GROUNDWATER ELEVATION MAP

(10/17/23)  
HUNTSMAN G #13-10  
CLOSURE ASSESSMENT  
40.310797 / -104.608747  
NW¼ SE¼ SEC.13 T4N R65W 6PM  
WELD COUNTY, COLORADO  
API # 05-123-14664  
REMEDIAL # 25096

FIGURE NO.  
5

DRAWN BY:  
GEC



**EAGLE**  
ENVIRONMENTAL  
CONSULTING, LLC  
8000 W 44th Ave, Wheat Ridge, CO 80033  
Ph: 303-433-0479 • F: 303-325-5449



## **TABLES**

**Table 1: Photoionization Detector Reading Summary**

**Table 2: Soil Analytical Results Summary**

**Table 3: Polycyclic Aromatic Hydrocarbons Analytical Results Summary**

**Table 4: Metals Analytical Results Summary**

**Table 5: Groundwater Analytical Results Summary**

**Table 6: Inorganic Groundwater Parameters Summary**

**Table 7: Groundwater Elevation Summary**

**TABLE 1**  
**PHOTOIONIZATION DETECTOR READING SUMMARY**  
**HUNTSMAN G #13-10**  
**CLOSURE ASSESSMENT**  
**40.310797 / -104.608747**  
**NW1/4 SE1/4 SEC.13 T4N R65W 6PM**  
**WELD COUNTY, COLORADO**  
**LOCATION ID 483364**  
**REMEDATION # 25096**

Sample Location (Latitude/Longitude)	Date	Approximate Depth (feet)	PID Reading (ppm-v)	Lab Submission (Y/N)
WH-SS-01 @ 5' (40.310828 / -104.608767)	11/16/22	5	3.9	N
WH-SS-02 @ 5' (40.310811 / -104.608745)	11/16/22	5	4.8	N
WH-SS-03 @ 5' (40.310798 / -104.608772)	11/16/22	5	6.9	N
WH-SS-04 @ 5' (40.310816 / -104.608789)	11/16/22	5	3.2	N
WH-FS-01 @ 6' (40.310813 / -104.608768)	11/16/22	6	15.4	Y
Background-01 @ 2' (40.310790 / -104.608713)	11/16/22	2	2.7	Y
MW-01 @ 10-12.5' (40.310811 / -104.608756)	07/13/23	10-12.5	0.3	Y
MW-02 @ 10-12.5' (40.310874 / -104.608760)	07/13/23	10-12.5	6.2	Y
MW-03 @ 10-12.5' (40.310803 / -104.608669)	07/13/23	10-12.5	0.7	Y
MW-04 @ 10-12.5' (40.310742 / -104.608763)	07/13/23	10-12.5	2.8	Y
MW-05 @ 10-12.5' (40.310813 / -104.608848)	07/13/23	10-12.5	5.6	Y
(Y/N) = Yes or No ppm-v = parts per million by volume PID - photoionization detector				



TABLE 2  
SOIL ANALYTICAL RESULTS SUMMARY  
HUNTSMAN G #13-10  
CLOSURE ASSESSMENT  
40.310797 / -104.608747  
NW1/4 SE1/4 SEC.13 T4N R65W 6PM  
WELD COUNTY, COLORADO  
LOCATION ID 483364  
REMEDATION # 25096

Sample Location (Latitude/Longitude)	Date	Approximate Depth (feet)	PID Reading (ppm-v)	Benzene (mg/kg)	Toluene (mg/kg)	Ethylbenzene (mg/kg)	Total Xylenes (mg/kg)	TPH-GRO (mg/kg)	TPH-DRO (mg/kg)	TPH-RRO (mg/kg)	1,2,4- Trimethylbenzene (mg/kg)	1,3,5- Trimethylbenzene (mg/kg)	Boron (mg/L)	Specific Conductance (mmhos/cm)	pH (pH units)	SAR
<b>ECMC Table 915-1 Residential Screening Levels</b>				<b>1.2</b>	<b>490</b>	<b>5.8</b>	<b>58</b>	<b>500</b>			<b>30</b>	<b>27</b>	<b>2</b>	<b>&lt;4</b>	<b>6-8.3</b>	<b>&lt;6</b>
<b>ECMC Table 915-1 Protection of Groundwater Soil Screening Levels</b>				<b>0.0026</b>	<b>0.69</b>	<b>0.78</b>	<b>9.9</b>	<b>--</b>			<b>0.0081</b>	<b>0.0087</b>	<b>--</b>	<b>--</b>	<b>--</b>	<b>--</b>
WH-FS-01 @ 6' (40.310813 / -104.608768)	11/16/22	6	15.4	<0.00200	<0.00200	<0.00200	<0.00200	<0.200	37.1	<100	<0.00200	<0.00200	0.194	0.743	7.380	0.739
MW-01 @ 10-12.5' (40.310811 / -104.608756)	07/13/23	10-12.5	0.3	<0.00200	<0.00200	<0.00200	<0.00200	<0.200	<25.0	<100	<0.00200	<0.00200	NA	NA	NA	NA
MW-02 @ 10-12.5' (40.310874 / -104.608760)	07/13/23	10-12.5	6.2	<0.00200	<0.00200	<0.00200	<0.00200	<0.200	<25.0	<100	<0.00200	<0.00200	NA	NA	NA	NA
MW-03 @ 10-12.5' (40.310803 / -104.608669)	07/13/23	10-12.5	0.7	<0.00200	<0.00200	<0.00200	<0.00200	<0.200	<25.0	<100	<0.00200	<0.00200	NA	NA	NA	NA
MW-04 @ 10-12.5' (40.310742 / -104.608763)	07/13/23	10-12.5	2.8	<0.00200	<0.00200	<0.00200	<0.00200	<0.200	<25.0	<100	<0.00200	<0.00200	NA	NA	NA	NA
MW-05 @ 10-12.5' (40.310813 / -104.608848)	07/13/23	10-12.5	5.6	<0.00200	<0.00200	<0.00200	<0.00200	<0.200	<25.0	<100	<0.00200	<0.00200	NA	NA	NA	NA
ECMC = Energy & Carbon Management Commission mg/kg = milligrams per kilogram      TPH-GRO = Total Petroleum Hydrocarbons - Gasoline Range Organics      NA - Not Analyzed mmhos/cm = millimhos per centimeter      TPH-DRO = Total Petroleum Hydrocarbons - Diesel Range Organics SAR = Sodium Adsorption Ratio      TPH-RRO = Total Petroleum Hydrocarbons - Residual Range Organics ppm-v = parts per million by volume PID = photoionization detector Notes: Values presented with a less than symbol (<) did not contain concentrations at or above the laboratory reporting limit. Values presented in <b>BOLD</b> contained concentrations exceeding applicable ECMC Table 915-1 Regulatory Limits Values presented in <b>BOLD+ asterisk (*)</b> contained concentrations exceeding ECMC Table 915-1 Protection of Groundwater Soil Screening Levels																

TABLE 3  
PAHS ANALYTICAL RESULTS SUMMARY  
HUNTSMAN G #13-10  
CLOSURE ASSESSMENT  
40.310797 / -104.608747  
NW1/4 SE1/4 SEC.13 T4N R6SW 6PM  
WELD COUNTY, COLORADO  
LOCATION ID 483364  
REMEDATION # 25096

Sample Location (Latitude/Longitude)	Date	Approximate Depth (feet)	PID Reading (ppm-v)	1-Methyl- naphthalene (mg/kg)	2-Methyl- naphthalene (mg/kg)	Acenaphthene (mg/kg)	Anthracene (mg/kg)	Benzo(a)-anthracene (mg/kg)	Benzo(a)- pyrene (mg/kg)	Benzo(b)- fluoranthene (mg/kg)	Benzo(k)- fluoranthene (mg/kg)	Chrysene (mg/kg)	Dibenzo(a,h)- anthracene (mg/kg)	Fluoranthene (mg/kg)	Fluorene (mg/kg)	Ideno(1,2,3- cd)-pyrene (mg/kg)	Naphthalene (mg/kg)	Pyrene (mg/kg)
<b>ECMC Table 915-1 Residential Screening Levels</b>				18	24	360	1,800	1.1	0.11	1.1	11	110	0.11	240	240	1.1	2	180
<b>ECMC Table 915-1 Protection of Groundwater Soil Screening Levels</b>				0.006	0.019	0.55	5.8	0.011	0.24	0.3	2.9	9	0.096	8.9	0.54	0.98	0.0038	1.3
WH-FS-01 @ 6" (40.310813 / -104.608768)	11/16/22	6	15.4	<b>0.0229*</b>	<b>0.0204*</b>	0.0098	<0.00335	<0.00335	<0.00335	<0.00335	<0.00335	0.00448	<0.00335	<0.00335	0.0224	<0.00335	<0.00380	<0.00335
MW-01 @ 10-12.5' (40.310811 / -104.608756)	07/13/23	10-12.5	0.3	<0.00201	<0.00201	<0.00067	<0.00067	<0.00067	<0.00067	<0.00067	<0.00067	<0.00067	<0.00067	<0.00067	<0.00067	<0.00067	<0.00380	<0.00067
MW-02 @ 10-12.5' (40.310874 / -104.608760)	07/13/23	10-12.5	6.2	<0.00201	<0.00201	<0.00067	<0.00067	<0.00067	<0.00067	<0.00067	<0.00067	<0.00067	<0.00067	<0.00067	<0.00067	<0.00067	<0.00380	<0.00067
MW-03 @ 10-12.5' (40.310803 / -104.608669)	07/13/23	10-12.5	0.7	<0.00201	<0.00201	<0.00067	<0.00067	<0.00067	<0.00067	<0.00067	<0.00067	<0.00067	<0.00067	<0.00067	<0.00067	<0.00067	<0.00380	<0.00067
MW-04 @ 10-12.5' (40.310742 / -104.608763)	07/13/23	10-12.5	2.8	<0.00201	<0.00201	<0.00067	<0.00067	<0.00067	<0.00067	<0.00067	<0.00067	<0.00067	<0.00067	<0.00067	<0.00067	<0.00067	<0.00380	<0.00067
MW-05 @ 10-12.5' (40.310813 / -104.608848)	07/13/23	10-12.5	5.6	<0.00201	<0.00201	<0.00067	<0.00067	<0.00067	<0.00067	<0.00067	<0.00067	<0.00067	<0.00067	<0.00067	<0.00067	<0.00067	<0.00380	<0.00067
ECMC = Energy & Carbon Management Commission mg/kg = milligrams per kilogram ppm-v = parts per million by volume PID - photoionization detector Values presented with a less than symbol (<) did not contain concentrations at or above the laboratory reporting limit. Values presented in <b>BOLD</b> contained concentrations exceeding applicable ECMC Table 915-1 Regulatory Limits Values presented in <b>BOLD</b> + asterisk (*) contained concentrations exceeding ECMC Table 915-1 Protection of Groundwater Soil Screening Level:																		



TABLE 4  
METALS ANALYTICAL RESULTS SUMMARY  
HUNTSMAN G #13-10  
CLOSURE ASSESSMENT  
40.310797 / -104.608747  
NW1/4 SE1/4 SEC.13 T4N R65W 6PM  
WELD COUNTY, COLORADO  
LOCATION ID 483364  
REMEDIALATION # 25096

Sample Location (Latitude/Longitude)	Date	Approximate Depth (feet)	Arsenic (mg/kg)	Barium (mg/kg)	Cadmium (mg/kg)	Hexavalent Chromium (mg/kg)	Copper (mg/kg)	Lead (mg/kg)	Nickel (mg/kg)	Selenium (mg/kg)	Silver (mg/kg)	Zinc (mg/kg)
<b>ECMC Table 915-1 Residential Screening Levels</b>			0.68	15,000	71	0.3	3,100	400	1,500	390	390	23,000
<b>ECMC Table 915-1 Protection of Groundwater Soil Screening Levels</b>			0.29	82	0.38	0.00067	46	14	26	0.26	0.8	370
<b>Local Cleanup Levels</b>			3.03	--	--	0.1 to 1**	--	--	--	--	--	--
WH-FS-01 @ 6' (40.310813 / -104.608768)	11/16/22	6	2.2	74	0.123	NA	<8.76	11.8	<8.76	0.125	<0.0876	<87.6
Background-01 @ 2' (40.310790 / -104.608713)	11/16/22	2	2.4	52.5	0.120	NA	<9.20	<9.20	<9.20	0.184	<0.0876	<87.6
ECMC = Energy & Carbon Management Commission mg/kg = milligrams per kilogram Notes: Values presented with a less than symbol (<) did not contain concentrations at or above the laboratory reporting limit or minimum detection levels. Values presented in <b>BOLD</b> contained concentrations exceeding applicable ECMC Table 915-1 Regulatory Limits **Achievable practical quantitative limits for Hexavalent Chromium in soils is in the range of 0.1 to 1 mg/kg. Elevated metals are naturally occurring in Colorado. Local Clean-up Levels are 1.25*Background, where applicable.												

TABLE 5  
GROUNDWATER ANALYTICAL RESULTS SUMMARY  
HUNTSMAN G #13-10  
CLOSURE ASSESSMENT  
40.310797 / -104.608747  
NW1/4 SE1/4 SEC.13 T4N R65W 6PM  
WELD COUNTY, COLORADO  
LOCATION ID 483364  
REMEDATION # 25096

Sample Location (Latitude/Longitude)	Date	Benzene (µg/L)	Toluene (µg/L)	Ethylbenzene (µg/L)	Total Xylenes (µg/L)	Naphthalene (µg/L)	1,2,4- Trimethylbenzene (µg/L)	1,3,5 - Trimethylbenzene (µg/L)
<b>ECMC Table 915-1 Regulatory Limits (µg/L)</b>		<b>5</b>	<b>560</b>	<b>700</b>	<b>1400</b>	<b>140</b>	<b>67</b>	<b>67</b>
MW-01 (40.310811 / -104.608756)	10/17/23	<1.00	<1.00	2.88	<1.00	<2.00	<2.00	<2.00
MW-02 (40.310874 / -104.608760)	10/17/23	<1.00	<1.00	2.84	<1.00	<2.00	2.00	<2.00
MW-03 (40.310803 / -104.608669)	10/17/23	<1.00	<1.00	<1.00	<1.00	<2.00	2.00	<2.00
MW-04 (40.310742 / -104.608763)	10/17/23	<1.00	<1.00	<1.00	<1.00	<2.00	<2.00	<2.00
MW-05 (40.310813 / -104.608848)	10/17/23	<1.00	<1.00	2.82	<1.00	<2.00	<2.00	<2.00
ECMC = Energy & Carbon Management Commission µg/L - micrograms per liter Note: Values presented with a less than symbol (<) indicate concentrations were not observed at or above the laboratory reporting limit. Values presented in <b>bold</b> typeface exceed their respective ECMC - Regulatory Limits (Table 915-1).								



**TABLE 6**  
**INORGANIC GROUNDWATER PARAMETERS SUMMARY**  
**HUNTSMAN G #13-10**  
**CLOSURE ASSESSMENT**  
**40.310797 / -104.608747**  
**NW1/4 SE1/4 SEC.13 T4N R65W 6PM**  
**WELD COUNTY, COLORADO**  
**LOCATION ID 483364**  
**REMEDATION # 25096**

Sample Location (Latitude/Longitude)	Date	Chloride (mg/L)	Sulfate (mg/L)	Total Dissolved Solids (mg/L)
<b>ECMC Table 915-1 Regulatory Limits (mg/L)</b>		<b>&lt;1.25xLocal Background (908)</b>	<b>&lt;1.25xLocal Background (708)</b>	<b>&lt;1.25xLocal Background (3112)</b>
MW-01 (40.310811 / -104.608756)	10/17/23	754	625	2650
MW-02 (40.310874 / -104.608760)	10/17/23	727	567	2490
MW-03 (40.310803 / -104.608669)	10/17/23	755	449	2490
MW-04 (40.310742 / -104.608763)	10/17/23	763	573	2570
MW-05 (40.310813 / -104.608848)	10/17/23	639	451	2120

**Notes:**

ECMC = Energy & Carbon Management Commission

mg/L = milligrams per liter

Note: The Inorganic Groundwater Parameters of upgradient monitoring well MW-02 were used in the determination of "local background range" at the site. Local "regulatory limit/range" (1.25\*local background) presented (in parentheses).

Values presented in **bold** typeface exceed their respective ECMC - Regulatory Limits (Table 915-1).



**TABLE 7**  
**GROUNDWATER ELEVATION SUMMARY**  
**HUNTSMAN G #13-10**  
**CLOSURE ASSESSMENT**  
**40.310797 / -104.608747**  
**NE1/4 SW1/4 SEC.13 T4N R65W 6PM**  
**WELD COUNTY, COLORADO**  
**LOCATION ID 483364**  
**REMEDATION # 25096**

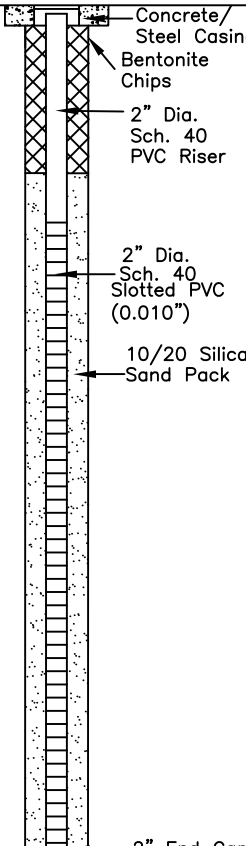
Sample Location (Latitude/Longitude)	Date	Top of Casing Elevation (feet)	Depth to Groundwater from TOC (feet)	Relative Groundwater Elevation (feet)
MW-01 (40.310811 / -104.608756)	10/17/23	99.25	16.53	82.72
MW-02 (40.310874 / -104.608760)	10/17/23	99.45	16.32	83.13
MW-03 (40.310803 / -104.608669)	10/17/23	100	17.38	82.62
MW-04 (40.310742 / -104.608763)	10/17/23	99.09	16.22	82.87
MW-05 (40.310813 / -104.608848)	10/17/23	99.17	16.60	82.57
NOTES: TOC - top of casing				





## **ATTACHMENT A**

### **Soil Boring Log / Well Completion Diagrams**

DEPTH (FT)	LITHOLOGY	SAMPLE				OVM/OVA (PPM)	BLOW COUNT (per 0.5 FT)	DEPTH (FT)	WELL CONSTRUCTION DETAIL	COMMENTS
	DESCRIPTION	GRAPHIC LOG	TYPE	NUMBER	RECOVERY %					
0	(0-5') clayey SAND - brown, dry to moist, loose, fine grained, poorly-graded with ~15% clay, N/O, N/S		DP	1	70	0.2	N/A		 <p>Concrete/ Steel Casing Bentonite Chips</p> <p>2" Dia. Sch. 40 PVC Riser</p> <p>2" Dia. Sch. 40 Slotted PVC (0.010")</p> <p>10/20 Silica Sand Pack</p> <p>2" End Cap</p>	
						0.1				
5	(5-10') clayey SAND - brown, dry to moist, medium dense, fine grained, poorly-graded with ~20% clay, N/O, N/S	SC	DP	2	80	0.1	N/A	5		
						0.2				
10	(10-15') sandy CLAY - brown, moist to wet, soft, poorly-graded, slight plasticity, trace CaCO <sub>3</sub> stringers, ~15% fine grained sand, N/O, N/S		DP	3	100	0.3	N/A	10		
	@~13' wet					0.5				
15	(15-17.5') sandy CLAY - brown, moist to wet, stiff, poorly-graded, slight plasticity, ~15% fine grained sand, N/O, N/S	CL			85	0.4	N/A	15		
	(17.5-20') CLAYSTONE - brown, moist to wet, very stiff, poorly-graded, N/O, N/S		DP	4	80	0.7				
20	BoB @ 20'							20		
25								25		
30										

HA - Hand Auger  
 DP - Direct Push  
 HC - Hydrocarbon  
 BoB - Bottom of Boring  
 N/O - no odor  
 N/S - no staining  
 TOC - top of casing  
 bgs - below ground  
 surface

START/COMPLETION DATE: 07/13/23

SAND PACK INTERVAL (FEET): 4-20

PROJECT: HUNTSMAN G #13-10

BENTONITE/GROUT INTERVAL (FEET): 0.5-4

LOGGED BY: I. MCFARLAND

WELL SCREEN INTERVAL (FEET): 5-20

DRILLING COMPANY/EQUIPMENT: EAGLE/GEOPROBE

WELL DIAMETER (INCHES): 2

BORING DEPTH (FEET): 20

WELL DEPTH (FEET): 20

PID INSTRUMENT: MiniRAE 3000 - PID #13

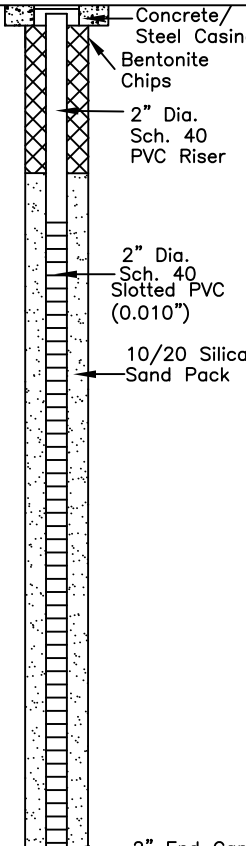
TIME STARTED/COMPLETED: 1013/1030

SAMPLE COLLECTION DEPTH (FT.)/TIME: 10-12.5/1020



**EAGLE**  
 ENVIRONMENTAL  
 CONSULTING, LLC

8000 W 44th Ave., Wheat Ridge, CO 80033  
 Ph: 303-433-0479 • F: 303-325-5449

DEPTH (FT)	LITHOLOGY	SAMPLE				OVM/OVA (PPM)	BLOW COUNT (per 0.5 FT)	DEPTH (FT)	WELL CONSTRUCTION DETAIL	COMMENTS
	DESCRIPTION	GRAPHIC LOG	TYPE	NUMBER	RECOVERY %					
0	(0-5') clayey SAND - brown, dry to moist, loose, fine grained, poorly-graded with ~15% clay, N/O, N/S	SC	DP	1	70	1.9	N/A			
						4.6				
5	(5-10') clayey SAND - brown, dry to moist, medium dense, fine grained, poorly-graded with ~20% clay, N/O, N/S		DP	2	80	5.4	N/A	5		
						6.0				
10	(10-15') sandy CLAY - brown, moist to wet, soft, poorly-graded, slight plasticity, trace CaCO <sub>3</sub> stringers, ~15% fine grained sand, N/O, N/S	CL	DP	3	100	6.2	N/A	10		
	@~13' wet					5.6				
15	(15-17.5') sandy CLAY - brown, moist to wet, stiff, poorly-graded, slight plasticity, ~15% fine grained sand, N/O, N/S		DP	4	90	6.1	N/A	15		
	(17.5-20') CLAYSTONE - brown, moist to wet, very stiff, poorly-graded, no plasticity, N/O, N/S					90				
20	BoB @ 20'							20		
25								25		HA - Hand Auger DP - Direct Push HC - Hydrocarbon BoB - Bottom of Boring N/O - no odor N/S - no staining TOC - top of casing bgs - below ground surface
30										

START/COMPLETION DATE: 07/13/23

SAND PACK INTERVAL (FEET): 4-20

PROJECT: HUNTSMAN G #13-10

BENTONITE/GROUT INTERVAL (FEET): 0.5-4

LOGGED BY: I. MCFARLAND

WELL SCREEN INTERVAL (FEET): 5-20

DRILLING COMPANY/EQUIPMENT: EAGLE/GEOPROBE

WELL DIAMETER (INCHES): 2

BORING DEPTH (FEET): 20

WELL DEPTH (FEET): 20

PID INSTRUMENT: MiniRAE 3000 - PID #13

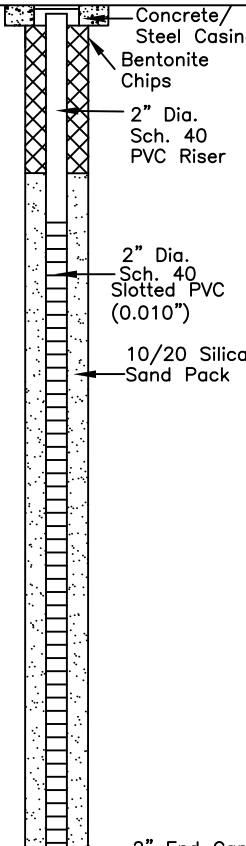
TIME STARTED/COMPLETED: 1241/1259

SAMPLE COLLECTION DEPTH (FT.)/TIME: 10-12.5/1250



**EAGLE**  
 ENVIRONMENTAL  
 CONSULTING, LLC

8000 W 44th Ave., Wheat Ridge, CO 80033  
 Ph: 303-433-0479 • F: 303-325-5449

DEPTH (FT)	LITHOLOGY	SAMPLE				OVM/OVA (PPM)	BLOW COUNT (per 0.5 FT)	DEPTH (FT)	WELL CONSTRUCTION DETAIL	COMMENTS
	DESCRIPTION	GRAPHIC LOG	TYPE	NUMBER	RECOVERY %					
0	(0-5') clayey SAND - brown, dry to moist, loose, fine grained, poorly-graded with ~15% clay, N/O, N/S		DP	1	80	0.1	N/A		 <p>Concrete/ Steel Casing Bentonite Chips</p> <p>2" Dia. Sch. 40 PVC Riser</p> <p>2" Dia. Sch. 40 Slotted PVC (0.010")</p> <p>10/20 Silica Sand Pack</p> <p>2" End Cap</p>	
						0.4				
5	(5-10') clayey SAND - brown, dry to moist, medium dense, fine grained, poorly-graded with ~20% clay, N/O, N/S	SC	DP	2	80	0.4	N/A	5		
						0.5				
10	(10-15') sandy CLAY - brown, moist to wet, soft, poorly-graded, slight plasticity, trace CaCO <sub>3</sub> stringers, ~15% fine grained sand, N/O, N/S		DP	3	100	0.7	N/A	10		
	@~13' wet					0.5				
15	(15-20') sandy CLAY - brown, moist to wet, stiff to soft, poorly-graded, slight to no plasticity, ~15% fine grained sand, claystone @ 16.5', N/O, N/S	CL	DP	4	80	0.8	N/A	15		
					80	0.7				
20	BoB @ 20'							20		
25								25		HA - Hand Auger DP - Direct Push HC - Hydrocarbon BoB - Bottom of Boring N/O - no odor N/S - no staining TOC - top of casing bgs - below ground surface
30										

START/COMPLETION DATE: 07/13/23

SAND PACK INTERVAL (FEET): 4-20

PROJECT: HUNTSMAN G #13-10

BENTONITE/GROUT INTERVAL (FEET): 0.5-4

LOGGED BY: I. MCFARLAND

WELL SCREEN INTERVAL (FEET): 5-20

DRILLING COMPANY/EQUIPMENT: EAGLE/GEOPROBE

WELL DIAMETER (INCHES): 2

BORING DEPTH (FEET): 20

WELL DEPTH (FEET): 20

PID INSTRUMENT: MiniRAE 3000 - PID #13

TIME STARTED/COMPLETED: 1050/1115

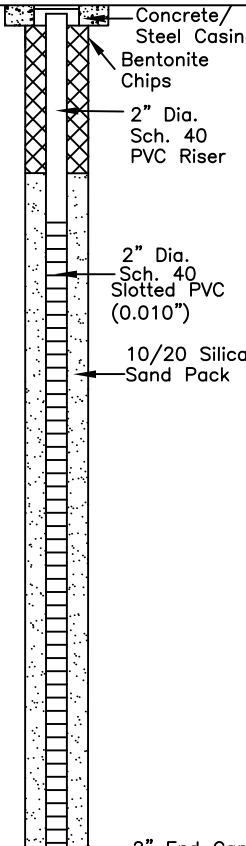
SAMPLE COLLECTION DEPTH (FT.)/TIME: 10-12.5/1058



**EAGLE**  
ENVIRONMENTAL  
CONSULTING, LLC

8000 W 44th Ave., Wheat Ridge, CO 80033  
Ph: 303-433-0479 • F: 303-325-5449



DEPTH (FT)	LITHOLOGY	SAMPLE				OVM/OVA (PPM)	BLOW COUNT (per 0.5 FT)	DEPTH (FT)	WELL CONSTRUCTION DETAIL	COMMENTS
	DESCRIPTION	GRAPHIC LOG	TYPE	NUMBER	RECOVERY %					
0	(0-5') clayey SAND - brown, dry to moist, loose, fine grained, poorly-graded with ~15% clay, N/O, N/S		DP	1	70	1.2	N/A		 <p>Concrete/ Steel Casing Bentonite Chips</p> <p>2" Dia. Sch. 40 PVC Riser</p> <p>2" Dia. Sch. 40 Slotted PVC (0.010")</p> <p>10/20 Silica Sand Pack</p> <p>2" End Cap</p>	
						0.9				
5	(5-10') clayey SAND - brown, dry to moist, medium dense, fine grained, poorly-graded with ~20% clay, N/O, N/S	SC	DP	2	80	1.9	N/A	5		
						1.7				
10	(10-15') sandy CLAY - brown, moist to wet, soft, poorly-graded, slight plasticity, trace CaCO <sub>3</sub> stringers, ~15% fine grained sand, N/O, N/S		DP	3	100	2.8	N/A	10		
	@~13' wet					3.0				
15	(15-17.5') sandy CLAY - brown, moist to wet, stiff, poorly-graded, slight plasticity, ~15% fine grained sand, N/O, N/S	CL			100	3.2	N/A	15		
	(17.5-20') CLAYSTONE - brown, moist to wet, very stiff, poorly-graded, no plasticity, N/O, N/S		DP	4						
					70	3.4				
20	BoB @ 20'							20		
25								25		
30										

HA - Hand Auger  
 DP - Direct Push  
 HC - Hydrocarbon  
 BoB - Bottom of Boring  
 N/O - no odor  
 N/S - no staining  
 TOC - top of casing  
 bgs - below ground  
 surface

START/COMPLETION DATE: 07/13/23

SAND PACK INTERVAL (FEET): 4-20

PROJECT: HUNTSMAN G #13-10

BENTONITE/GROUT INTERVAL (FEET): 0.5-4

LOGGED BY: I. MCFARLAND

WELL SCREEN INTERVAL (FEET): 5-20

DRILLING COMPANY/EQUIPMENT: EAGLE/GEOPROBE

WELL DIAMETER (INCHES): 2

BORING DEPTH (FEET): 20

WELL DEPTH (FEET): 20

PID INSTRUMENT: MiniRAE 3000 - PID #13

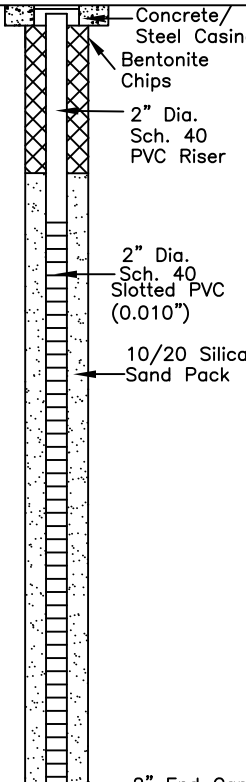
TIME STARTED/COMPLETED: 1135/1157

SAMPLE COLLECTION DEPTH (FT.)/TIME: 10-12.5/1143



**EAGLE**  
 ENVIRONMENTAL  
 CONSULTING, LLC

8000 W 44th Ave., Wheat Ridge, CO 80033  
 Ph: 303-433-0479 • F: 303-325-5449

DEPTH (FT)	LITHOLOGY	SAMPLE				OVM/OVA (PPM)	BLOW COUNT (per 0.5 FT)	DEPTH (FT)	WELL CONSTRUCTION DETAIL	COMMENTS
	DESCRIPTION	GRAPHIC LOG	TYPE	NUMBER	RECOVERY %					
0	(0-5') clayey SAND - brown, dry to moist, loose, fine grained, poorly-graded with ~15% clay, N/O, N/S	SC	DP	1	70	2.8	N/A			
						4.7				
5	(5-10') clayey SAND - brown, dry to moist, medium dense, fine grained, poorly-graded with ~20% clay, N/O, N/S		DP	2	80	3.6	N/A	5		
						5.0				
10	(10-15') sandy CLAY - brown, moist to wet, soft, poorly-graded, slight plasticity, trace CaCO <sub>3</sub> stringers, ~15% fine grained sand, N/O, N/S	CL	DP	3	90	5.6	N/A	10		
	@~13' wet					4.0				
15	(15-18.5') sandy CLAY - brown, moist to wet, stiff, poorly-graded, slight plasticity, ~15% fine grained sand, N/O, N/S, claystone @ 17.5'		DP	4	90	4.8	N/A	15		
	BoB @ 18.5'									
20								20		
25								25		
30										

HA - Hand Auger  
 DP - Direct Push  
 HC - Hydrocarbon  
 BoB - Bottom of Boring  
 N/O - no odor  
 N/S - no staining  
 TOC - top of casing  
 bgs - below ground surface

START/COMPLETION DATE: 07/13/23

SAND PACK INTERVAL (FEET): 4-18.5

PROJECT: HUNTSMAN G #13-10

BENTONITE/GROUT INTERVAL (FEET): 0.5-4

LOGGED BY: I. MCFARLAND

WELL SCREEN INTERVAL (FEET): 5-18.5

DRILLING COMPANY/EQUIPMENT: EAGLE/GEOPROBE

WELL DIAMETER (INCHES): 2

BORING DEPTH (FEET): 18.5

WELL DEPTH (FEET): 18.5

PID INSTRUMENT: MiniRAE 3000 - PID #13

TIME STARTED/COMPLETED: 1207/1235

SAMPLE COLLECTION DEPTH (FT.)/TIME: 10-12.5/1216



**EAGLE**  
 ENVIRONMENTAL  
 CONSULTING, LLC

8000 W 44th Ave., Wheat Ridge, CO 80033  
 Ph: 303-433-0479 • F: 303-325-5449



## **ATTACHMENT B**

### **Laboratory Analytical Reports**



July 24, 2023

Eagle Environmental Consulting, LLC

Martin C Eckert III

8000 W 44th Ave

Wheat Ridge CO 80033

Project Name - Noble - Huntsman G #13-10

Project Number - [none]

Attached are your analytical results for Noble - Huntsman G #13-10 received by Origins Laboratory, Inc. July 13, 2023. This project is associated with Origins project number Y307289-01.

The analytical results in the following report were analyzed under the guidelines of EPA Methods. These methods are identified as follows; "SW" are defined in SW-846, "EPA" are defined in 40CFR part 136 and "SM" are defined in the most current revision of Standard Methods For the Examination of Water and Wastewater.

The analytical results apply specifically to the samples and analyses specified per the attached Chain of Custody. As such, this report shall not be reproduced except in full, without the written approval of Origin's laboratory.

Unless otherwise noted, the analytical results for all soil samples are reported on a wet weight basis. All analytical analyses were performed under NELAP guidelines unless noted by a data qualifier.

Any holding time exceedances, deviations from the method specifications or deviations from Origins Laboratory's Standard Operating Procedures are outlined in the case narrative.

Thank you for selecting Origins for your analytical needs. Please contact us with any questions concerning this report, or if we can help with anything at all.

Origins Laboratory, Inc.  
303.433.1322  
o-squad@oelabinc.com



1725 Elk Place, Denver, CO 80211 | Phone: 303.433.1322 | Fax: 303.265.9645



Eagle Environmental Consulting, LLC  
8000 W 44th Ave  
Wheat Ridge CO 80033

Martin C Eckert III  
Project Number: [none]  
Project: Noble - Huntsman G #13-10

## CROSS REFERENCE REPORT

Sample ID	Laboratory ID	Matrix	Date Sampled	Date Received
MW-01@10-12.5	Y307289-01	Soil	July 13, 2023 10:20	07/13/2023 16:15
MW-02@10-12.5	Y307289-02	Soil	July 13, 2023 12:50	07/13/2023 16:15
MW-03@10-12.5	Y307289-03	Soil	July 13, 2023 10:58	07/13/2023 16:15
MW-04@10-12.5	Y307289-04	Soil	July 13, 2023 11:43	07/13/2023 16:15
MW-05@10-12.5	Y307289-05	Soil	July 13, 2023 12:16	07/13/2023 16:15

Origins Laboratory, Inc.



*The results in this report apply to the samples analyzed in accordance with the chain of custody document. This analytical report must be reproduced in its entirety.*



Eagle Environmental Consulting, LLC  
8000 W 44th Ave  
Wheat Ridge CO 80033

Martin C Eckert III  
Project Number: [none]  
Project: Noble - Huntsman G #13-10

Origins Laboratory

F-012207-01-R1  
Effective Date: 01/09/12

## Sample Receipt Checklist

Origins Work Order: 430728a

Client: Eagle

Client Project ID: Hunterson Huntman

Checklist Completed by: WHIHS

Shipped Via: HD

(UPS, FedEx, Hand Delivered, Pick-up, etc.)

Date/time completed: 7/14/23

Airbill #: N/A

Matrix(s) Received: (Check all that apply): ☒ Soil/Solid ☐ Water ☐ Other: \_\_\_\_\_

Cooler Number/Temperature: 1, 19 °C / \_\_\_\_\_ °C / \_\_\_\_\_ °C (Describe) \_\_\_\_\_ °C

Thermometer ID: 7004

Requirement Description	Yes	No	N/A	Comments (if any)
If samples require cooling, was the temperature between 0°C to ≤ 6°C <sup>(1)</sup> ?	<input checked="" type="checkbox"/>	<input type="checkbox"/>	<input type="checkbox"/>	
Is there ice present (document if blue ice is used)	<input checked="" type="checkbox"/>	<input type="checkbox"/>	<input type="checkbox"/>	
Are custody seals present on cooler? (if so, document in comments if they are signed and dated, broken or intact)	<input checked="" type="checkbox"/>	<input checked="" type="checkbox"/>	<input type="checkbox"/>	
Are custody seals present on each sample container? (if so, document in comments if they are signed and dated, broken or intact)	<input checked="" type="checkbox"/>	<input checked="" type="checkbox"/>	<input type="checkbox"/>	
Were all samples received intact <sup>(1)</sup> ?	<input checked="" type="checkbox"/>	<input type="checkbox"/>	<input type="checkbox"/>	
Was adequate sample volume provided <sup>(1)</sup> ?	<input checked="" type="checkbox"/>	<input type="checkbox"/>	<input type="checkbox"/>	
Are short holding time analytes or samples with HTs due within 48 hours present <sup>(1)</sup> ?	<input checked="" type="checkbox"/>	<input checked="" type="checkbox"/>	<input type="checkbox"/>	
Is a chain-of-custody (COC) present and filled out completely <sup>(1)</sup> ?	<input checked="" type="checkbox"/>	<input type="checkbox"/>	<input type="checkbox"/>	
Does the COC agree with the number and type of sample bottles received <sup>(1)</sup> ?	<input checked="" type="checkbox"/>	<input type="checkbox"/>	<input type="checkbox"/>	
Do the sample IDs on the bottle labels match the COC <sup>(1)</sup> ?	<input checked="" type="checkbox"/>	<input type="checkbox"/>	<input type="checkbox"/>	
Is the COC properly relinquished by the client with date and time recorded <sup>(1)</sup> ?	<input checked="" type="checkbox"/>	<input type="checkbox"/>	<input type="checkbox"/>	
For volatiles in water – is there headspace (> ¼ inch bubble) present? If yes, contact client and note in narrative.	<input type="checkbox"/>	<input type="checkbox"/>	<input checked="" type="checkbox"/>	
Are samples preserved that require preservation and was it checked <sup>(1)</sup> ? (note ID of confirmation instrument used in comments) / (preservation is not confirmed for subcontracted analyses in order to insure sample integrity)/(pH <2 for samples preserved with HNO <sub>3</sub> , HCL, H <sub>2</sub> SO <sub>4</sub> ) / (pH >10 for samples preserved with NaAsO <sub>2</sub> +NaOH, ZnAc+NaOH)	<input type="checkbox"/>	<input type="checkbox"/>	<input checked="" type="checkbox"/>	
Additional Comments (if any):				

<sup>(1)</sup> If NO, then contact the client before proceeding with analysis and note date/time and person contacted as well as the corrective action to in the additional comments (above) and the case narrative.

Reviewed by (Project Manager) [Signature]

Date/Time Reviewed 7/14/23

Origins Laboratory, Inc.

[Signature]

The results in this report apply to the samples analyzed in accordance with the chain of custody document. This analytical report must be reproduced in its entirety.

Eagle Environmental Consulting, LLC  
8000 W 44th Ave  
Wheat Ridge CO 80033

Martin C Eckert III  
Project Number: [none]  
Project: Noble - Huntsman G #13-10

## MW-01@10-12.5

7/13/2023 10:20:00AM

Analyte	Result	Min Detection Limit	Reporting Limit	Units	Dilution	Batch	Prepared	Analyzed	Notes
---------	--------	---------------------	-----------------	-------	----------	-------	----------	----------	-------

## Origins Laboratory, Inc. Y307289-01 (Soil)

### DRO/ORO by EPA 8015D

Diesel (C10-C28)	ND	25.0	mg/kg	1	B3G1401	07/14/2023	07/17/2023	U
Residual Range Organics (C28-C40)	ND	100	"	"	"	"	"	U

Surrogate: o-Terphenyl 95.2 % 50-150 " " "

### GBTEX+TMBs by 8260D

1,2,4-Trimethylbenzene	ND	0.00200	mg/kg	1	B3G1713	07/17/2023	07/17/2023	U
1,3,5-Trimethylbenzene	ND	0.00200	"	"	"	"	"	U
Benzene	ND	0.00200	"	"	"	"	"	U
Ethylbenzene	ND	0.00200	"	"	"	"	"	U
Naphthalene	ND	0.00380	"	"	"	"	"	U
Toluene	ND	0.00200	"	"	"	"	"	U
Xylenes, total	ND	0.00200	"	"	"	"	"	U
Gasoline Range Hydrocarbons	ND	0.200	"	"	"	"	07/20/2023	U

Surrogate: 1,2-Dichloroethane-d4 115 % 70-130 " " 07/17/2023  
Surrogate: Toluene-d8 91.6 % 70-130 " " "  
Surrogate: 4-Bromofluorobenzene 111 % 70-130 " " "

Origins Laboratory, Inc.



The results in this report apply to the samples analyzed in accordance with the chain of custody document. This analytical report must be reproduced in its entirety.



Eagle Environmental Consulting, LLC  
8000 W 44th Ave  
Wheat Ridge CO 80033

Martin C Eckert III  
Project Number: [none]  
Project: Noble - Huntsman G #13-10

## MW-01@10-12.5

7/13/2023 10:20:00AM

Analyte	Result	Min Detection Limit	Reporting Limit	Units	Dilution	Batch	Prepared	Analyzed	Notes
---------	--------	---------------------	-----------------	-------	----------	-------	----------	----------	-------

## Waypoint Analytical, LLC. Y307289-01 (Soil)

### PAH by 8270D SIM

1-Methylnaphthalene	ND	0.00109	0.00201	mg/Kg	1	L693252	07/18/2023	07/18/2023
2-Methylnaphthalene	ND	0.00194	0.00201	"	"	"	"	"
Acenaphthene	ND	0.000304	0.00067	"	"	"	"	"
Anthracene	ND	0.000334	0.00067	"	"	"	"	"
Benzo(a)anthracene	ND	0.000493	0.00067	"	"	"	"	"
Benzo(a)pyrene	ND	0.000468	0.00067	"	"	"	"	"
Benzo(b)fluoranthene	ND	0.000585	0.00067	"	"	"	"	"
Benzo(k)fluoranthene	ND	0.000437	0.00067	"	"	"	"	"
Chrysene	ND	0.000624	0.00067	"	"	"	"	"
Dibenz(a,h)anthracene	ND	0.000614	0.00067	"	"	"	"	"
Fluoranthene	ND	0.000394	0.00067	"	"	"	"	"
Fluorene	ND	0.000286	0.00067	"	"	"	"	"
Indeno(1,2,3-cd)pyrene	ND	0.000627	0.00067	"	"	"	"	"
Pyrene	ND	0.000643	0.00067	"	"	"	"	"

Surrogate: 2-Fluorobiphenyl	47.9 %	33-115	"	"	"
Surrogate: 4-Terphenyl-d14	56.3 %	33-122	"	"	"
Surrogate: Nitrobenzene-d5	41 %	29-110	"	"	"

Origins Laboratory, Inc.



The results in this report apply to the samples analyzed in accordance with the chain of custody document. This analytical report must be reproduced in its entirety.

Eagle Environmental Consulting, LLC  
8000 W 44th Ave  
Wheat Ridge CO 80033

Martin C Eckert III  
Project Number: [none]  
Project: Noble - Huntsman G #13-10

## MW-02@10-12.5

7/13/2023 12:50:00PM

Analyte	Result	Min Detection Limit	Reporting Limit	Units	Dilution	Batch	Prepared	Analyzed	Notes
---------	--------	---------------------	-----------------	-------	----------	-------	----------	----------	-------

## Origins Laboratory, Inc. Y307289-02 (Soil)

### DRO/ORO by EPA 8015D

Diesel (C10-C28)	ND	25.0	mg/kg	1	B3G1401	07/14/2023	07/17/2023	U
Residual Range Organics (C28-C40)	ND	100	"	"	"	"	"	U

Surrogate: o-Terphenyl 98.3 % 50-150 " " "

### GBTEX+TMBs by 8260D

1,2,4-Trimethylbenzene	ND	0.00200	mg/kg	1	B3G1713	07/17/2023	07/17/2023	U
1,3,5-Trimethylbenzene	ND	0.00200	"	"	"	"	"	U
Benzene	ND	0.00200	"	"	"	"	"	U
Ethylbenzene	ND	0.00200	"	"	"	"	"	U
Naphthalene	ND	0.00380	"	"	"	"	"	U
Toluene	ND	0.00200	"	"	"	"	"	U
Xylenes, total	ND	0.00200	"	"	"	"	"	U
Gasoline Range Hydrocarbons	ND	0.200	"	"	"	"	"	U

Surrogate: 1,2-Dichloroethane-d4 109 % 70-130 " " "  
Surrogate: Toluene-d8 91.4 % 70-130 " " "  
Surrogate: 4-Bromofluorobenzene 116 % 70-130 " " "

Origins Laboratory, Inc.



The results in this report apply to the samples analyzed in accordance with the chain of custody document. This analytical report must be reproduced in its entirety.

Eagle Environmental Consulting, LLC  
8000 W 44th Ave  
Wheat Ridge CO 80033

Martin C Eckert III  
Project Number: [none]  
Project: Noble - Huntsman G #13-10

**MW-02@10-12.5**

**7/13/2023 12:50:00PM**

Analyte	Result	Min Detection Limit	Reporting Limit	Units	Dilution	Batch	Prepared	Analyzed	Notes
---------	--------	---------------------	-----------------	-------	----------	-------	----------	----------	-------

**Waypoint Analytical, LLC.**  
**Y307289-02 (Soil)**

## PAH by 8270D SIM

1-Methylnaphthalene	ND	0.00109	0.00201	mg/Kg	1	L693252	07/18/2023	07/18/2023
2-Methylnaphthalene	ND	0.00194	0.00201	"	"	"	"	"
Acenaphthene	ND	0.000304	0.00067	"	"	"	"	"
Anthracene	ND	0.000334	0.00067	"	"	"	"	"
Benzo(a)anthracene	ND	0.000493	0.00067	"	"	"	"	"
Benzo(a)pyrene	ND	0.000468	0.00067	"	"	"	"	"
Benzo(b)fluoranthene	ND	0.000585	0.00067	"	"	"	"	"
Benzo(k)fluoranthene	ND	0.000437	0.00067	"	"	"	"	"
Chrysene	ND	0.000624	0.00067	"	"	"	"	"
Dibenz(a,h)anthracene	ND	0.000614	0.00067	"	"	"	"	"
Fluoranthene	ND	0.000394	0.00067	"	"	"	"	"
Fluorene	ND	0.000286	0.00067	"	"	"	"	"
Indeno(1,2,3-cd)pyrene	ND	0.000627	0.00067	"	"	"	"	"
Pyrene	ND	0.000643	0.00067	"	"	"	"	"

Surrogate: 2-Fluorobiphenyl	48.8 %	33-115	"	"	"
Surrogate: 4-Terphenyl-d14	54.3 %	33-122	"	"	"
Surrogate: Nitrobenzene-d5	41.8 %	29-110	"	"	"

Origins Laboratory, Inc.



The results in this report apply to the samples analyzed in accordance with the chain of custody document. This analytical report must be reproduced in its entirety.

Eagle Environmental Consulting, LLC  
8000 W 44th Ave  
Wheat Ridge CO 80033

Martin C Eckert III  
Project Number: [none]  
Project: Noble - Huntsman G #13-10

MW-03@10-12.5

7/13/2023 10:58:00AM

Analyte	Result	Min Detection Limit	Reporting Limit	Units	Dilution	Batch	Prepared	Analyzed	Notes
---------	--------	---------------------	-----------------	-------	----------	-------	----------	----------	-------

Origins Laboratory, Inc.  
Y307289-03 (Soil)

## DRO/ORO by EPA 8015D

Diesel (C10-C28)	ND	25.0	mg/kg	1	B3G1401	07/14/2023	07/17/2023	U
Residual Range Organics (C28-C40)	ND	100	"	"	"	"	"	U

Surrogate: o-Terphenyl 93.3 % 50-150 " " "

## GBTEX+TMBs by 8260D

1,2,4-Trimethylbenzene	ND	0.00200	mg/kg	1	B3G1713	07/17/2023	07/17/2023	U
1,3,5-Trimethylbenzene	ND	0.00200	"	"	"	"	"	U
Benzene	ND	0.00200	"	"	"	"	"	U
Ethylbenzene	ND	0.00200	"	"	"	"	"	U
Naphthalene	ND	0.00380	"	"	"	"	"	U
Toluene	ND	0.00200	"	"	"	"	"	U
Xylenes, total	ND	0.00200	"	"	"	"	"	U
Gasoline Range Hydrocarbons	ND	0.200	"	"	"	"	"	U

Surrogate: 1,2-Dichloroethane-d4 111 % 70-130 " " "  
Surrogate: Toluene-d8 92.2 % 70-130 " " "  
Surrogate: 4-Bromofluorobenzene 114 % 70-130 " " "

Origins Laboratory, Inc.



The results in this report apply to the samples analyzed in accordance with the chain of custody document. This analytical report must be reproduced in its entirety.



Eagle Environmental Consulting, LLC  
8000 W 44th Ave  
Wheat Ridge CO 80033

Martin C Eckert III  
Project Number: [none]  
Project: Noble - Huntsman G #13-10

MW-03@10-12.5

7/13/2023 10:58:00AM

Analyte	Result	Min Detection Limit	Reporting Limit	Units	Dilution	Batch	Prepared	Analyzed	Notes
---------	--------	---------------------	-----------------	-------	----------	-------	----------	----------	-------

Waypoint Analytical, LLC.  
Y307289-03 (Soil)

## PAH by 8270D SIM

1-Methylnaphthalene	ND	0.00109	0.00201	mg/Kg	1	L693252	07/18/2023	07/18/2023
2-Methylnaphthalene	ND	0.00194	0.00201	"	"	"	"	"
Acenaphthene	ND	0.000304	0.00067	"	"	"	"	"
Anthracene	ND	0.000334	0.00067	"	"	"	"	"
Benzo(a)anthracene	ND	0.000493	0.00067	"	"	"	"	"
Benzo(a)pyrene	ND	0.000468	0.00067	"	"	"	"	"
Benzo(b)fluoranthene	ND	0.000585	0.00067	"	"	"	"	"
Benzo(k)fluoranthene	ND	0.000437	0.00067	"	"	"	"	"
Chrysene	ND	0.000624	0.00067	"	"	"	"	"
Dibenz(a,h)anthracene	ND	0.000614	0.00067	"	"	"	"	"
Fluoranthene	ND	0.000394	0.00067	"	"	"	"	"
Fluorene	ND	0.000286	0.00067	"	"	"	"	"
Indeno(1,2,3-cd)pyrene	ND	0.000627	0.00067	"	"	"	"	"
Pyrene	ND	0.000643	0.00067	"	"	"	"	"

Surrogate: 2-Fluorobiphenyl	46.1 %	33-115	"	"	"
Surrogate: 4-Terphenyl-d14	51.2 %	33-122	"	"	"
Surrogate: Nitrobenzene-d5	39.1 %	29-110	"	"	"

Origins Laboratory, Inc.



The results in this report apply to the samples analyzed in accordance with the chain of custody document. This analytical report must be reproduced in its entirety.

Eagle Environmental Consulting, LLC  
8000 W 44th Ave  
Wheat Ridge CO 80033

Martin C Eckert III  
Project Number: [none]  
Project: Noble - Huntsman G #13-10

## MW-04@10-12.5

7/13/2023 11:43:00AM

Analyte	Result	Min Detection Limit	Reporting Limit	Units	Dilution	Batch	Prepared	Analyzed	Notes
---------	--------	---------------------	-----------------	-------	----------	-------	----------	----------	-------

## Origins Laboratory, Inc. Y307289-04 (Soil)

### DRO/ORO by EPA 8015D

Diesel (C10-C28)	ND	25.0	mg/kg	1	B3G1401	07/14/2023	07/17/2023	U
Residual Range Organics (C28-C40)	ND	100	"	"	"	"	"	U

Surrogate: o-Terphenyl 94.1 % 50-150 " " "

### GBTEX+TMBs by 8260D

1,2,4-Trimethylbenzene	ND	0.00200	mg/kg	1	B3G1713	07/17/2023	07/17/2023	U
1,3,5-Trimethylbenzene	ND	0.00200	"	"	"	"	"	U
Benzene	ND	0.00200	"	"	"	"	"	U
Ethylbenzene	ND	0.00200	"	"	"	"	"	U
Naphthalene	ND	0.00380	"	"	"	"	"	U
Toluene	ND	0.00200	"	"	"	"	"	U
Xylenes, total	ND	0.00200	"	"	"	"	"	U
Gasoline Range Hydrocarbons	ND	0.200	"	"	"	"	"	U

Surrogate: 1,2-Dichloroethane-d4 113 % 70-130 " " "  
Surrogate: Toluene-d8 90.7 % 70-130 " " "  
Surrogate: 4-Bromofluorobenzene 111 % 70-130 " " "

Origins Laboratory, Inc.



The results in this report apply to the samples analyzed in accordance with the chain of custody document. This analytical report must be reproduced in its entirety.

Eagle Environmental Consulting, LLC  
8000 W 44th Ave  
Wheat Ridge CO 80033

Martin C Eckert III  
Project Number: [none]  
Project: Noble - Huntsman G #13-10

## MW-04@10-12.5

7/13/2023 11:43:00AM

Analyte	Result	Min Detection Limit	Reporting Limit	Units	Dilution	Batch	Prepared	Analyzed	Notes
---------	--------	---------------------	-----------------	-------	----------	-------	----------	----------	-------

## Waypoint Analytical, LLC. Y307289-04 (Soil)

### PAH by 8270D SIM

1-Methylnaphthalene	ND	0.00109	0.00201	mg/Kg	1	L693252	07/18/2023	07/18/2023
2-Methylnaphthalene	ND	0.00194	0.00201	"	"	"	"	"
Acenaphthene	ND	0.000304	0.00067	"	"	"	"	"
Anthracene	ND	0.000334	0.00067	"	"	"	"	"
Benzo(a)anthracene	ND	0.000493	0.00067	"	"	"	"	"
Benzo(a)pyrene	ND	0.000468	0.00067	"	"	"	"	"
Benzo(b)fluoranthene	ND	0.000585	0.00067	"	"	"	"	"
Benzo(k)fluoranthene	ND	0.000437	0.00067	"	"	"	"	"
Chrysene	ND	0.000624	0.00067	"	"	"	"	"
Dibenz(a,h)anthracene	ND	0.000614	0.00067	"	"	"	"	"
Fluoranthene	ND	0.000394	0.00067	"	"	"	"	"
Fluorene	ND	0.000286	0.00067	"	"	"	"	"
Indeno(1,2,3-cd)pyrene	ND	0.000627	0.00067	"	"	"	"	"
Pyrene	ND	0.000643	0.00067	"	"	"	"	"

Surrogate: 2-Fluorobiphenyl	51.4 %	33-115	"	"	"
Surrogate: 4-Terphenyl-d14	59.3 %	33-122	"	"	"
Surrogate: Nitrobenzene-d5	44.1 %	29-110	"	"	"

Origins Laboratory, Inc.



The results in this report apply to the samples analyzed in accordance with the chain of custody document. This analytical report must be reproduced in its entirety.

Eagle Environmental Consulting, LLC  
8000 W 44th Ave  
Wheat Ridge CO 80033

Martin C Eckert III  
Project Number: [none]  
Project: Noble - Huntsman G #13-10

## MW-05@10-12.5

7/13/2023 12:16:00PM

Analyte	Result	Min Detection Limit	Reporting Limit	Units	Dilution	Batch	Prepared	Analyzed	Notes
---------	--------	---------------------	-----------------	-------	----------	-------	----------	----------	-------

## Origins Laboratory, Inc. Y307289-05 (Soil)

### DRO/ORO by EPA 8015D

Diesel (C10-C28)	ND	25.0	mg/kg	1	B3G1701	07/17/2023	07/17/2023	U
Residual Range Organics (C28-C40)	ND	100	"	"	"	"	"	U

Surrogate: o-Terphenyl 88.6 % 50-150 " " "

### GBTEX+TMBs by 8260D

1,2,4-Trimethylbenzene	ND	0.00200	mg/kg	1	B3G1713	07/17/2023	07/17/2023	U
1,3,5-Trimethylbenzene	ND	0.00200	"	"	"	"	"	U
Benzene	ND	0.00200	"	"	"	"	"	U
Ethylbenzene	ND	0.00200	"	"	"	"	"	U
Naphthalene	ND	0.00380	"	"	"	"	"	U
Toluene	ND	0.00200	"	"	"	"	"	U
Xylenes, total	ND	0.00200	"	"	"	"	"	U
Gasoline Range Hydrocarbons	ND	0.200	"	"	"	"	"	U

Surrogate: 1,2-Dichloroethane-d4 110 % 70-130 " " "  
Surrogate: Toluene-d8 89.6 % 70-130 " " "  
Surrogate: 4-Bromofluorobenzene 113 % 70-130 " " "

Origins Laboratory, Inc.



The results in this report apply to the samples analyzed in accordance with the chain of custody document. This analytical report must be reproduced in its entirety.

Eagle Environmental Consulting, LLC  
8000 W 44th Ave  
Wheat Ridge CO 80033

Martin C Eckert III  
Project Number: [none]  
Project: Noble - Huntsman G #13-10

MW-05@10-12.5

7/13/2023 12:16:00PM

Analyte	Result	Min Detection Limit	Reporting Limit	Units	Dilution	Batch	Prepared	Analyzed	Notes
---------	--------	---------------------	-----------------	-------	----------	-------	----------	----------	-------

Waypoint Analytical, LLC.  
Y307289-05 (Soil)

## PAH by 8270D SIM

1-Methylnaphthalene	ND	0.00109	0.00201	mg/Kg	1	L693252	07/18/2023	07/18/2023
2-Methylnaphthalene	ND	0.00194	0.00201	"	"	"	"	"
Acenaphthene	ND	0.000304	0.00067	"	"	"	"	"
Anthracene	ND	0.000334	0.00067	"	"	"	"	"
Benzo(a)anthracene	ND	0.000493	0.00067	"	"	"	"	"
Benzo(a)pyrene	ND	0.000468	0.00067	"	"	"	"	"
Benzo(b)fluoranthene	ND	0.000585	0.00067	"	"	"	"	"
Benzo(k)fluoranthene	ND	0.000437	0.00067	"	"	"	"	"
Chrysene	ND	0.000624	0.00067	"	"	"	"	"
Dibenz(a,h)anthracene	ND	0.000614	0.00067	"	"	"	"	"
Fluoranthene	ND	0.000394	0.00067	"	"	"	"	"
Fluorene	ND	0.000286	0.00067	"	"	"	"	"
Indeno(1,2,3-cd)pyrene	ND	0.000627	0.00067	"	"	"	"	"
Pyrene	ND	0.000643	0.00067	"	"	"	"	"

Surrogate: 2-Fluorobiphenyl	50.9 %	33-115	"	"	"
Surrogate: 4-Terphenyl-d14	56.7 %	33-122	"	"	"
Surrogate: Nitrobenzene-d5	43.9 %	29-110	"	"	"

Origins Laboratory, Inc.



The results in this report apply to the samples analyzed in accordance with the chain of custody document. This analytical report must be reproduced in its entirety.



Eagle Environmental Consulting, LLC  
8000 W 44th Ave  
Wheat Ridge CO 80033

Martin C Eckert III  
Project Number: [none]  
Project: Noble - Huntsman G #13-10

## Extractable Petroleum Hydrocarbons by 8015D - Quality Control Origins Laboratory, Inc.

Analyte	Result	Reporting Limit	Units	Spike Level	Source Result	%REC	%REC Limits	RPD	RPD Limit	Notes
Batch B3G1401 - EPA 3550B										
Blank (B3G1401-BLK1)					Prepared: 07/14/2023 Analyzed: 07/17/2023					
Diesel (C10-C28)	ND	25.0	mg/kg							U
Residual Range Organics (C28-C40)	ND	100	"							U
Surrogate: o-Terphenyl	25		"	24.9		102	50-150			

Origins Laboratory, Inc.



The results in this report apply to the samples analyzed in accordance with the chain of custody document. This analytical report must be reproduced in its entirety.

Eagle Environmental Consulting, LLC  
8000 W 44th Ave  
Wheat Ridge CO 80033

Martin C Eckert III  
Project Number: [none]  
Project: Noble - Huntsman G #13-10

Extractable Petroleum Hydrocarbons by 8015D - Quality Control  
Origins Laboratory, Inc.

Analyte	Result	Reporting Limit	Units	Spike Level	Source Result	%REC	%REC Limits	RPD	RPD Limit	Notes
Batch B3G1401 - EPA 3550B										
LCS (B3G1401-BS1)					Prepared: 07/14/2023 Analyzed: 07/17/2023					
Diesel (C10-C28)	962	50.0	mg/kg	1000		96.2	70-130			
Residual Range Organics (C28-C40)	957	200	"	1000		95.7	70-130			
Surrogate: o-Terphenyl	56		"	49.8		112	50-150			

Origins Laboratory, Inc.



The results in this report apply to the samples analyzed in accordance with the chain of custody document. This analytical report must be reproduced in its entirety.

Eagle Environmental Consulting, LLC  
8000 W 44th Ave  
Wheat Ridge CO 80033

Martin C Eckert III  
Project Number: [none]  
Project: Noble - Huntsman G #13-10

## Extractable Petroleum Hydrocarbons by 8015D - Quality Control Origins Laboratory, Inc.

Analyte	Result	Reporting Limit	Units	Spike Level	Source Result	%REC	%REC Limits	RPD	RPD Limit	Notes
Batch B3G1401 - EPA 3550B										
<b>Matrix Spike (B3G1401-MS1)</b>		<b>Source: Y307255-06</b>			Prepared: 07/14/2023 Analyzed: 07/17/2023					
Diesel (C10-C28)	852	50.0	mg/kg	1000	ND	85.2	70-130			
Residual Range Organics (C28-C40)	849	200	"	1000	ND	84.9	70-130			
Surrogate: o-Terphenyl	50		"	49.8		100	50-150			

Origins Laboratory, Inc.



The results in this report apply to the samples analyzed in accordance with the chain of custody document. This analytical report must be reproduced in its entirety.

Eagle Environmental Consulting, LLC  
8000 W 44th Ave  
Wheat Ridge CO 80033

Martin C Eckert III  
Project Number: [none]  
Project: Noble - Huntsman G #13-10

## Extractable Petroleum Hydrocarbons by 8015D - Quality Control

### Origins Laboratory, Inc.

Analyte	Result	Reporting Limit	Units	Spike Level	Source Result	%REC	%REC Limits	RPD	RPD Limit	Notes
Batch B3G1401 - EPA 3550B										
Matrix Spike Dup (B3G1401-MSD1)		Source: Y307255-06			Prepared: 07/14/2023 Analyzed: 07/17/2023					
Diesel (C10-C28)	838	50.0	mg/kg	1000	ND	83.8	70-130	1.70	35	
Residual Range Organics (C28-C40)	835	200	"	1000	ND	83.5	70-130	1.61	35	
Surrogate: o-Terphenyl	52		"	49.8		105	50-150			

Origins Laboratory, Inc.



The results in this report apply to the samples analyzed in accordance with the chain of custody document. This analytical report must be reproduced in its entirety.

Eagle Environmental Consulting, LLC  
8000 W 44th Ave  
Wheat Ridge CO 80033

Martin C Eckert III  
Project Number: [none]  
Project: Noble - Huntsman G #13-10

Extractable Petroleum Hydrocarbons by 8015D - Quality Control  
Origins Laboratory, Inc.

Analyte	Result	Reporting Limit	Units	Spike Level	Source Result	%REC	%REC Limits	RPD	RPD Limit	Notes
Batch B3G1701 - EPA 3550B										
Blank (B3G1701-BLK1)					Prepared: 07/17/2023 Analyzed: 07/17/2023					
Diesel (C10-C28)	ND	25.0	mg/kg							U
Residual Range Organics (C28-C40)	ND	100	"							U
Surrogate: o-Terphenyl	24		"	24.9		96.0	50-150			

Origins Laboratory, Inc.



The results in this report apply to the samples analyzed in accordance with the chain of custody document. This analytical report must be reproduced in its entirety.



Eagle Environmental Consulting, LLC  
8000 W 44th Ave  
Wheat Ridge CO 80033

Martin C Eckert III  
Project Number: [none]  
Project: Noble - Huntsman G #13-10

Extractable Petroleum Hydrocarbons by 8015D - Quality Control  
Origins Laboratory, Inc.

Analyte	Result	Reporting Limit	Units	Spike Level	Source Result	%REC	%REC Limits	RPD	RPD Limit	Notes
---------	--------	-----------------	-------	-------------	---------------	------	-------------	-----	-----------	-------

Batch B3G1701 - EPA 3550B

LCS (B3G1701-BS1)

Prepared: 07/17/2023 Analyzed: 07/17/2023

Diesel (C10-C28)	902	50.0	mg/kg	1000		90.2	70-130			
Residual Range Organics (C28-C40)	917	200	"	1000		91.7	70-130			
Surrogate: o-Terphenyl	51		"	49.8		103	50-150			

Origins Laboratory, Inc.



The results in this report apply to the samples analyzed in accordance with the chain of custody document. This analytical report must be reproduced in its entirety.

Jordan A. Bynon, Project Manager

Eagle Environmental Consulting, LLC  
8000 W 44th Ave  
Wheat Ridge CO 80033

Martin C Eckert III  
Project Number: [none]  
Project: Noble - Huntsman G #13-10

## Extractable Petroleum Hydrocarbons by 8015D - Quality Control Origins Laboratory, Inc.

Analyte	Result	Reporting Limit	Units	Spike Level	Source Result	%REC	%REC Limits	RPD	RPD Limit	Notes
---------	--------	-----------------	-------	-------------	---------------	------	-------------	-----	-----------	-------

Batch B3G1701 - EPA 3550B

Matrix Spike (B3G1701-MS1)		Source: Y307289-05			Prepared: 07/17/2023 Analyzed: 07/17/2023					
Diesel (C10-C28)	898	50.0	mg/kg	1000	ND	89.8	70-130			
Residual Range Organics (C28-C40)	913	200	"	1000	ND	91.3	70-130			
Surrogate: o-Terphenyl	47		"	49.8		94.8	50-150			

Origins Laboratory, Inc.



The results in this report apply to the samples analyzed in accordance with the chain of custody document. This analytical report must be reproduced in its entirety.

Jordan A. Bynon, Project Manager

Eagle Environmental Consulting, LLC  
8000 W 44th Ave  
Wheat Ridge CO 80033

Martin C Eckert III  
Project Number: [none]  
Project: Noble - Huntsman G #13-10

## Extractable Petroleum Hydrocarbons by 8015D - Quality Control

### Origins Laboratory, Inc.

Analyte	Result	Reporting Limit	Units	Spike Level	Source Result	%REC	%REC Limits	RPD	RPD Limit	Notes
Batch B3G1701 - EPA 3550B										
<b>Matrix Spike Dup (B3G1701-MSD1)</b>			<b>Source: Y307289-05</b>			Prepared: 07/17/2023 Analyzed: 07/17/2023				
Diesel (C10-C28)	880	50.0	mg/kg	1000	ND	88.0	70-130	2.11	35	
Residual Range Organics (C28-C40)	901	200	"	1000	ND	90.1	70-130	1.34	35	
Surrogate: o-Terphenyl	49		"	49.8		98.3	50-150			

Origins Laboratory, Inc.



The results in this report apply to the samples analyzed in accordance with the chain of custody document. This analytical report must be reproduced in its entirety.

Jordan A. Bynon, Project Manager

Eagle Environmental Consulting, LLC  
8000 W 44th Ave  
Wheat Ridge CO 80033

Martin C Eckert III  
Project Number: [none]  
Project: Noble - Huntsman G #13-10

## Extractable Petroleum Hydrocarbons by 8015D - Quality Control

### Origins Laboratory, Inc.

Analyte	Result	Reporting Limit	Units	Spike Level	Source Result	%REC	%REC Limits	RPD	RPD Limit	Notes
Batch B3G1713 - EPA 5030 (soil)										
Blank (B3G1713-BLK1)					Prepared: 07/17/2023 Analyzed: 07/17/2023					
1,2,4-Trimethylbenzene	ND	0.00200	mg/kg							U
1,3,5-Trimethylbenzene	ND	0.00200	"							U
Benzene	ND	0.00200	"							U
Ethylbenzene	ND	0.00200	"							U
Naphthalene	ND	0.00380	"							U
Toluene	ND	0.00200	"							U
Xylenes, total	ND	0.00200	"							U
Gasoline Range Hydrocarbons	ND	0.200	"							U
Surrogate: 1,2-Dichloroethane-d4	0.13		"	0.125		102	70-130			
Surrogate: Toluene-d8	0.11		"	0.125		90.8	70-130			
Surrogate: 4-Bromofluorobenzene	0.14		"	0.125		111	70-130			

Origins Laboratory, Inc.



The results in this report apply to the samples analyzed in accordance with the chain of custody document. This analytical report must be reproduced in its entirety.

Eagle Environmental Consulting, LLC  
8000 W 44th Ave  
Wheat Ridge CO 80033

Martin C Eckert III  
Project Number: [none]  
Project: Noble - Huntsman G #13-10

**Volatile Organic Compounds by GC/MS SW846 8260D - Quality Control**  
**Origins Laboratory, Inc.**

Analyte	Result	Reporting Limit	Units	Spike Level	Source Result	%REC	%REC Limits	RPD	RPD Limit	Notes
<b>Batch B3G1713 - EPA 5030 (soil)</b>										
<b>LCS (B3G1713-BS1)</b>					Prepared: 07/17/2023 Analyzed: 07/17/2023					
1,2,4-Trimethylbenzene	0.0940	0.00200	mg/kg	0.100		94.0	70-130			
1,3,5-Trimethylbenzene	0.0940	0.00200	"	0.100		94.0	70-130			
Benzene	0.100	0.00200	"	0.100		100	70-130			
Ethylbenzene	0.103	0.00200	"	0.100		103	70-130			
Naphthalene	0.0805	0.00380	"	0.100		80.5	70-130			
Toluene	0.0912	0.00200	"	0.100		91.2	70-130			
o-Xylene	0.0973	0.00200	"	0.100		97.3	70-130			
m,p-Xylene	0.211	0.00400	"	0.200		106	70-130			
Surrogate: 1,2-Dichloroethane-d4	0.12		"	0.125		96.7	70-130			
Surrogate: Toluene-d8	0.11		"	0.125		88.2	70-130			
Surrogate: 4-Bromofluorobenzene	0.15		"	0.125		122	70-130			

Origins Laboratory, Inc.



*The results in this report apply to the samples analyzed in accordance with the chain of custody document. This analytical report must be reproduced in its entirety.*



Eagle Environmental Consulting, LLC  
8000 W 44th Ave  
Wheat Ridge CO 80033

Martin C Eckert III  
Project Number: [none]  
Project: Noble - Huntsman G #13-10

## Volatile Organic Compounds by GC/MS SW846 8260D - Quality Control

### Origins Laboratory, Inc.

Analyte	Result	Reporting Limit	Units	Spike Level	Source Result	%REC	%REC Limits	RPD	RPD Limit	Notes
Batch B3G1713 - EPA 5030 (soil)										
Matrix Spike (B3G1713-MS1)		Source: Y307288-01			Prepared: 07/17/2023 Analyzed: 07/17/2023					
1,2,4-Trimethylbenzene	0.0960	0.00200	mg/kg	0.100	ND	96.0	70-130			
1,3,5-Trimethylbenzene	0.0947	0.00200	"	0.100	ND	94.7	70-130			
Benzene	0.102	0.00200	"	0.100	ND	102	70-130			
Ethylbenzene	0.108	0.00200	"	0.100	ND	108	70-130			
Naphthalene	0.0916	0.00380	"	0.100	ND	91.6	70-130			
Toluene	0.0969	0.00200	"	0.100	ND	96.9	70-130			
o-Xylene	0.103	0.00200	"	0.100	ND	103	70-130			
m,p-Xylene	0.222	0.00400	"	0.200	ND	111	70-130			
Surrogate: 1,2-Dichloroethane-d4	0.13		"	0.125		107	70-130			
Surrogate: Toluene-d8	0.11		"	0.125		90.0	70-130			
Surrogate: 4-Bromofluorobenzene	0.15		"	0.125		124	70-130			

Origins Laboratory, Inc.



The results in this report apply to the samples analyzed in accordance with the chain of custody document. This analytical report must be reproduced in its entirety.

Eagle Environmental Consulting, LLC  
8000 W 44th Ave  
Wheat Ridge CO 80033

Martin C Eckert III  
Project Number: [none]  
Project: Noble - Huntsman G #13-10

**Volatile Organic Compounds by GC/MS SW846 8260D - Quality Control**  
**Origins Laboratory, Inc.**

Analyte	Result	Reporting Limit	Units	Spike Level	Source Result	%REC	%REC Limits	RPD	RPD Limit	Notes
<b>Batch B3G1713 - EPA 5030 (soil)</b>										
<b>Matrix Spike Dup (B3G1713-MSD1)</b>		<b>Source: Y307288-01</b>			Prepared: 07/17/2023 Analyzed: 07/17/2023					
1,2,4-Trimethylbenzene	0.0976	0.00200	mg/kg	0.100	ND	97.6	70-130	1.61	20	
1,3,5-Trimethylbenzene	0.0973	0.00200	"	0.100	ND	97.3	70-130	2.73	20	
Benzene	0.0994	0.00200	"	0.100	ND	99.4	70-130	2.74	20	
Ethylbenzene	0.117	0.00200	"	0.100	ND	117	70-130	8.00	20	
Naphthalene	0.0936	0.00380	"	0.100	ND	93.6	70-130	2.12	20	
Toluene	0.0989	0.00200	"	0.100	ND	98.9	70-130	2.10	20	
o-Xylene	0.108	0.00200	"	0.100	ND	108	70-130	5.03	20	
m,p-Xylene	0.239	0.00400	"	0.200	ND	119	70-130	7.44	20	
Surrogate: 1,2-Dichloroethane-d4	0.13		"	0.125		103	70-130			
Surrogate: Toluene-d8	0.11		"	0.125		91.0	70-130			
Surrogate: 4-Bromofluorobenzene	0.16		"	0.125		128	70-130			

Origins Laboratory, Inc.



The results in this report apply to the samples analyzed in accordance with the chain of custody document. This analytical report must be reproduced in its entirety.

Eagle Environmental Consulting, LLC  
8000 W 44th Ave  
Wheat Ridge CO 80033

Martin C Eckert III  
Project Number: [none]  
Project: Noble - Huntsman G #13-10

**Volatile Organic Compounds by GC/MS SW846 8260D - Quality Control**  
**Origins Laboratory, Inc.**

Analyte	Result	Reporting Limit	Units	Spike Level	Source Result	%REC	%REC Limits	RPD	RPD Limit	Notes
---------	--------	-----------------	-------	-------------	---------------	------	-------------	-----	-----------	-------

**PAH by 8270D SIM - Quality Control**  
**Waypoint Analytical, LLC.**

Analyte	Result	Reporting Limit	Units	Spike Level	Source Result	%REC	%REC Limits	RPD	RPD Limit	Notes
---------	--------	-----------------	-------	-------------	---------------	------	-------------	-----	-----------	-------

**Batch L693252 - 3550B**

MSD (L 81009-MSD-L693252)		Source: 81009			Prepared: 07/18/2023 Analyzed: 07/18/2023					
Dibenz(a,h)anthracene	0.131	0.00067	mg/Kg	0.163	<0.000614	80.3	30-130	0.7	30	
1-Methylnaphthalene	0.103	0.00201	"	0.163	<0.00109	63.1	30-130	0.9	30	
Pyrene	0.108	0.00067	"	0.163	<0.000643	66.2	30-130	0	30	
Indeno(1,2,3-cd)pyrene	0.089	0.00067	"	0.163	<0.000627	54.6	30-130	0.3	30	
Fluoranthene	0.111	0.00067	"	0.163	<0.000394	68	30-130	1.7	30	
Chrysene	0.121	0.00067	"	0.163	<0.000624	74.2	30-130	1.6	30	
Benzo(k)fluoranthene	0.106	0.00067	"	0.163	<0.000437	65	30-130	12.5	30	
Fluorene	0.123	0.00067	"	0.163	<0.000286	75.4	30-130	1.6	30	
2-Methylnaphthalene	0.105	0.00201	"	0.163	<0.00194	64.4	30-130	0.9	30	
Benzo(b)fluoranthene	0.0733	0.00067	"	0.163	<0.000585	44.9	30-130	16.1	30	
Acenaphthene	0.111	0.00067	"	0.163	<0.000304	68	30-130	0.8	30	
Anthracene	0.128	0.00067	"	0.163	<0.000334	78.5	30-130	0.7	30	
Benzo(a)anthracene	0.118	0.00067	"	0.163	<0.000493	72.3	30-130	0.8	30	
Benzo(a)pyrene	0.126	0.00067	"	0.163	<0.000468	77.3	30-130	0	30	
Surrogate: Nitrobenzene-d5	44.4		"	0.326	151	44.4	29-110			
Surrogate: 4-Terphenyl-d14	57.9		"	0.326	200	57.9	33-122			
Surrogate: 2-Fluorobiphenyl	53.3		"	0.326	176	53.3	33-115			

MS (L 81009-MS-L693252)		Source: 81009			Prepared: 07/18/2023 Analyzed: 07/18/2023					
Benzo(k)fluoranthene	0.0935	0.00067	mg/Kg	0.166	<0.000437	56.3	30-130			
Indeno(1,2,3-cd)pyrene	0.0887	0.00067	"	0.166	<0.000627	53.4	30-130			
Fluorene	0.125	0.00067	"	0.166	<0.000286	75.3	30-130			

Origins Laboratory, Inc.



The results in this report apply to the samples analyzed in accordance with the chain of custody document. This analytical report must be reproduced in its entirety.

Eagle Environmental Consulting, LLC  
8000 W 44th Ave  
Wheat Ridge CO 80033

Martin C Eckert III  
Project Number: [none]  
Project: Noble - Huntsman G #13-10

**PAH by 8270D SIM - Quality Control**  
**Waypoint Analytical, LLC.**

Analyte	Result	Reporting Limit	Units	Spike Level	Source Result	%REC	%REC Limits	RPD	RPD Limit	Notes
---------	--------	-----------------	-------	-------------	---------------	------	-------------	-----	-----------	-------

**Batch L693252 - 3550B**

MS (L 81009-MS-L693252)		Source: 81009			Prepared: 07/18/2023 Analyzed: 07/18/2023					
Fluoranthene	0.113	0.00067	mg/Kg	0.166	<0.000394	68	30-130			
Dibenz(a,h)anthracene	0.13	0.00067	"	0.166	<0.000614	78.3	30-130			
Chrysene	0.119	0.00067	"	0.166	<0.000624	71.6	30-130			
Benzo(a)pyrene	0.126	0.00067	"	0.166	<0.000468	75.9	30-130			
Benzo(a)anthracene	0.119	0.00067	"	0.166	<0.000493	71.6	30-130			
Acenaphthene	0.112	0.00067	"	0.166	<0.000304	67.4	30-130			
Pyrene	0.108	0.00067	"	0.166	<0.000643	65	30-130			
2-Methylnaphthalene	0.106	0.00201	"	0.166	<0.00194	63.8	30-130			
Benzo(b)fluoranthene	0.0862	0.00067	"	0.166	<0.000585	51.9	30-130			
Anthracene	0.129	0.00067	"	0.166	<0.000334	77.7	30-130			
1-Methylnaphthalene	0.104	0.00201	"	0.166	<0.00109	62.6	30-130			
Surrogate: 4-Terphenyl-d14	55.8		"	0.331	200	55.8	33-122			
Surrogate: Nitrobenzene-d5	41.9		"	0.331	151	41.9	29-110			
Surrogate: 2-Fluorobiphenyl	51.6		"	0.331	176	51.6	33-115			

**LCS (LCS-L693252)**

Prepared: 07/18/2023 Analyzed: 07/18/2023

Chrysene	0.125	0.00067	mg/Kg	0.167		74.8	30-130
Dibenz(a,h)anthracene	0.139	0.00067	"	0.167		83.2	30-130
Fluoranthene	0.119	0.00067	"	0.167		71.2	30-130
Fluorene	0.132	0.00067	"	0.167		79	30-130
Indeno(1,2,3-cd)pyrene	0.0849	0.00067	"	0.167		50.8	30-130
Pyrene	0.116	0.00067	"	0.167		69.4	30-130
Benzo(k)fluoranthene	0.108	0.00067	"	0.167		64.6	30-130
1-Methylnaphthalene	0.112	0.00201	"	0.167		67	30-130
Benzo(a)pyrene	0.133	0.00067	"	0.167		79.6	30-130
Benzo(a)anthracene	0.121	0.00067	"	0.167		72.4	30-130
Anthracene	0.141	0.00067	"	0.167		84.4	30-130

Origins Laboratory, Inc.



The results in this report apply to the samples analyzed in accordance with the chain of custody document. This analytical report must be reproduced in its entirety.

Eagle Environmental Consulting, LLC  
8000 W 44th Ave  
Wheat Ridge CO 80033

Martin C Eckert III  
Project Number: [none]  
Project: Noble - Huntsman G #13-10

**PAH by 8270D SIM - Quality Control**  
**Waypoint Analytical, LLC.**

Analyte	Result	Reporting Limit	Units	Spike Level	Source Result	%REC	%REC Limits	RPD	RPD Limit	Notes
---------	--------	-----------------	-------	-------------	---------------	------	-------------	-----	-----------	-------

**Batch L693252 - 3550B**

**LCS (LCS-L693252)**

Prepared: 07/18/2023 Analyzed: 07/18/2023

Acenaphthene	0.118	0.00067	mg/Kg	0.167		70.6	30-130			
2-Methylnaphthalene	0.115	0.00201	"	0.167		68.8	30-130			
Benzo(b)fluoranthene	0.0782	0.00067	"	0.167		46.8	30-130			
Surrogate: Nitrobenzene-d5	48.6		"	0.333		48.6	29-110			
Surrogate: 4-Terphenyl-d14	62.7		"	0.333		62.7	33-122			
Surrogate: 2-Fluorobiphenyl	59.1		"	0.333		59.1	33-115			

**LRB (LRB-L693252)**

Prepared: 07/18/2023 Analyzed: 07/18/2023

Chrysene	ND	0.00067	mg/Kg				-			
Dibenz(a,h)anthracene	ND	0.00067	"				-			
Fluoranthene	ND	0.00067	"				-			
Fluorene	ND	0.00067	"				-			
Benzo(k)fluoranthene	ND	0.00067	"				-			
Indeno(1,2,3-cd)pyrene	ND	0.00067	"				-			
Benzo(b)fluoranthene	ND	0.00067	"				-			
Benzo(a)pyrene	ND	0.00067	"				-			
Benzo(a)anthracene	ND	0.00067	"				-			
Acenaphthene	ND	0.00067	"				-			
2-Methylnaphthalene	ND	0.00201	"				-			
1-Methylnaphthalene	ND	0.00201	"				-			
Pyrene	ND	0.00067	"				-			
Anthracene	ND	0.00067	"				-			
Surrogate: Nitrobenzene-d5	43.2		"	0.333		43.2	29-110			
Surrogate: 4-Terphenyl-d14	56.7		"	0.333		56.7	33-122			
Surrogate: 2-Fluorobiphenyl	51.6		"	0.333		51.6	33-115			

Origins Laboratory, Inc.



The results in this report apply to the samples analyzed in accordance with the chain of custody document. This analytical report must be reproduced in its entirety.



Eagle Environmental Consulting, LLC  
8000 W 44th Ave  
Wheat Ridge CO 80033

Martin C Eckert III  
Project Number: [none]  
Project: Noble - Huntsman G #13-10

### Notes and Definitions

U Sample is Non-Detect.

ND Analyte NOT DETECTED at or above the reporting limit

RPD Relative Percent Difference

All soil results are reported on a wet weight basis.

Calculated results may use J-flag data (instead of reported "ND") as part of calculation to provide a more accurate result.

Origins Laboratory, Inc.



*The results in this report apply to the samples analyzed in accordance with the chain of custody document. This analytical report must be reproduced in its entirety.*

Jordan A. Bynon, Project Manager



October 25, 2023

Eagle Environmental Consulting, LLC

Andrew Newberry

8000 W 44th Ave

Wheat Ridge CO 80033

Project Name - Noble - Huntsman G #13-10

Project Number - [none]

Attached are your analytical results for Noble - Huntsman G #13-10 received by Origins Laboratory, Inc. October 17, 2023. This project is associated with Origins project number Y310479-01.

The analytical results in the following report were analyzed under the guidelines of EPA Methods. These methods are identified as follows; "SW" are defined in SW-846, "EPA" are defined in 40CFR part 136 and "SM" are defined in the most current revision of Standard Methods For the Examination of Water and Wastewater.

The analytical results apply specifically to the samples and analyses specified per the attached Chain of Custody. As such, this report shall not be reproduced except in full, without the written approval of Origin's laboratory.

Unless otherwise noted, the analytical results for all soil samples are reported on a wet weight basis. All analytical analyses were performed under NELAP guidelines unless noted by a data qualifier.

Any holding time exceedances, deviations from the method specifications or deviations from Origins Laboratory's Standard Operating Procedures are outlined in the case narrative.

Thank you for selecting Origins for your analytical needs. Please contact us with any questions concerning this report, or if we can help with anything at all.

Origins Laboratory, Inc.  
303.433.1322  
o-squad@oelabinc.com



1725 Elk Place, Denver, CO 80211 | Phone: 303.433.1322 | Fax: 303.265.9645

Eagle Environmental Consulting, LLC  
8000 W 44th Ave  
Wheat Ridge CO 80033

Andrew Newberry  
Project Number: [none]  
Project: Noble - Huntsman G #13-10

## CROSS REFERENCE REPORT

Sample ID	Laboratory ID	Matrix	Date Sampled	Date Received
MW-01	Y310479-01	Water	October 17, 2023 11:00	10/17/2023 18:04
MW-02	Y310479-02	Water	October 17, 2023 11:20	10/17/2023 18:04
MW-03	Y310479-03	Water	October 17, 2023 11:40	10/17/2023 18:04
MW-04	Y310479-04	Water	October 17, 2023 12:00	10/17/2023 18:04
MW-05	Y310479-05	Water	October 17, 2023 12:20	10/17/2023 18:04

Origins Laboratory, Inc.



*The results in this report apply to the samples analyzed in accordance with the chain of custody document. This analytical report must be reproduced in its entirety.*

Eagle Environmental Consulting, LLC  
8000 W 44th Ave  
Wheat Ridge CO 80033

Andrew Newberry  
Project Number: [none]  
Project: Noble - Huntsman G #13-10

Client: Eagle Environmental Consulting  
Address: 8000 W. 44th Ave.  
Wheat Ridge, CO 80033  
Telephone Number: 303-433-0479  
Email Address: anewberry@eagle-enviro.com

Project Manager: Andrew Newberry  
Project Name: Huntsman G #13-10  
Project Number: ~  
Samples Collected By: BU

Sample ID Description	Date Sampled	Time Sampled	# of Containers	Preservative				Matrix			Analysis	Sample Instructions	
				Unpreserved	HCl	HNO <sub>3</sub>	Other	Groundwater	Soil	Air Summa Canister #			Other
MW-01	10-17-23	11:00	3		X			X					1
MW-02		11:20											2
MW-03		11:40											3
MW-04		12:00											4
MW-05		12:20											5
													6
													7
													8
													9
													10

Relinquished By: Blythe Ulrich Date: 10-17-23 Time: 1804

Relinquished By:  Date:  Time:

Received By: BU Date: 10/17/23 Time: 18:04

Received By:  Date:  Time:

Turnaround Time: Same Day ☐ 24 Hr ☐ 48 Hr ☐ 72 Hr ☒ Standard

Date Results Needed Noble

Temp Received- 1.4

★ Bill to Dan

Origins Laboratory, Inc.

*J. Bynon*

The results in this report apply to the samples analyzed in accordance with the chain of custody document. This analytical report must be reproduced in its entirety.

Eagle Environmental Consulting, LLC  
8000 W 44th Ave  
Wheat Ridge CO 80033

Andrew Newberry  
Project Number: [none]  
Project: Noble - Huntsman G #13-10

Origins Laboratory

F-012207-01-R1  
Effective Date: 01/09/12

### Sample Receipt Checklist

Origins Work Order: B10479

Client: Eagle

Client Project ID: Huntsman G #13-10

Checklist Completed by: TSV/ELH

Shipped Via: tlp

(UPS, FedEx, Hand Delivered, Pick-up, etc.)

Date/time completed: 10/18/23

Airbill #: N/A

Matrix(s) Received: (Check all that apply): Soil/Solid ☒ Water ☐ Other: ☐

Cooler Number/Temperature: 1 1.4 °C / °C / °C (Describe) °C

Thermometer ID: T004

Requirement Description	Yes	No	N/A	Comments (if any)
If samples require cooling, was the temperature between 0°C to ≤ 6°C <sup>(1)</sup> ?	<input checked="" type="checkbox"/>	<input type="checkbox"/>	<input type="checkbox"/>	
Is there ice present (document if blue ice is used)	<input checked="" type="checkbox"/>	<input type="checkbox"/>	<input type="checkbox"/>	
Are custody seals present on cooler? (if so, document in comments if they are signed and dated, broken or intact)	<input checked="" type="checkbox"/>	<input type="checkbox"/>	<input type="checkbox"/>	
Are custody seals present on each sample container? (if so, document in comments if they are signed and dated, broken or intact)	<input checked="" type="checkbox"/>	<input type="checkbox"/>	<input type="checkbox"/>	
Were all samples received intact <sup>(1)</sup> ?	<input checked="" type="checkbox"/>	<input type="checkbox"/>	<input type="checkbox"/>	
Was adequate sample volume provided <sup>(1)</sup> ?	<input checked="" type="checkbox"/>	<input type="checkbox"/>	<input type="checkbox"/>	
Are short holding time analytes or samples with HTs due within 48 hours present <sup>(1)</sup> ?	<input checked="" type="checkbox"/>	<input type="checkbox"/>	<input type="checkbox"/>	
Is a chain-of-custody (COC) present and filled out completely <sup>(1)</sup> ?	<input checked="" type="checkbox"/>	<input type="checkbox"/>	<input type="checkbox"/>	
Does the COC agree with the number and type of sample bottles received <sup>(1)</sup> ?	<input checked="" type="checkbox"/>	<input type="checkbox"/>	<input type="checkbox"/>	
Do the sample IDs on the bottle labels match the COC <sup>(1)</sup> ?	<input checked="" type="checkbox"/>	<input type="checkbox"/>	<input type="checkbox"/>	
Is the COC properly relinquished by the client with date and time recorded <sup>(1)</sup> ?	<input checked="" type="checkbox"/>	<input type="checkbox"/>	<input type="checkbox"/>	
For volatiles in water — is there headspace (> ¼ inch bubble) present? If yes, contact client and note in narrative.	<input checked="" type="checkbox"/>	<input type="checkbox"/>	<input type="checkbox"/>	
Are samples preserved that require preservation and was it checked <sup>(1)</sup> ? (note ID of confirmation instrument used in comments) / (preservation is not confirmed for subcontracted analyses in order to insure sample integrity)/(pH <2 for samples preserved with HNO <sub>3</sub> , HCL, H <sub>2</sub> SO <sub>4</sub> ) / (pH >10 for samples preserved with NaAsO <sub>2</sub> +NaOH, ZnAc+NaOH)	<input checked="" type="checkbox"/>	<input type="checkbox"/>	<input type="checkbox"/>	NC
Additional Comments (if any):				

<sup>(1)</sup> If NO, then contact the client before proceeding with analysis and note date, time and person contacted as well as the corrective action to in the additional comments (above) and the case narrative.

Reviewed by (Project Manager) [Signature]

Date/Time Reviewed 10/19/23

Origins Laboratory, Inc.

[Signature]

The results in this report apply to the samples analyzed in accordance with the chain of custody document. This analytical report must be reproduced in its entirety.

Eagle Environmental Consulting, LLC  
8000 W 44th Ave  
Wheat Ridge CO 80033

Andrew Newberry  
Project Number: [none]  
Project: Noble - Huntsman G #13-10

## MW-01

10/17/2023 11:00:00AM

Analyte	Result	Reporting Limit	Units	Dilution	Batch	Analyst	Prepared	Analyzed	Notes
---------	--------	-----------------	-------	----------	-------	---------	----------	----------	-------

## Origins Laboratory, Inc. Y310479-01 (Water)

### BTEX+N+TMBs by 8260D

1,2,4-Trimethylbenzene	ND	2.00	ug/L	1	B3J1817	JSM	10/18/2023	10/18/2023	U
1,3,5-Trimethylbenzene	ND	2.00	"	"	"	JSM	"	"	U
Benzene	ND	1.00	"	"	"	JSM	"	"	U
Ethylbenzene	2.88	1.00	"	"	"	JSM	"	"	
Naphthalene	ND	2.00	"	"	"	JSM	"	"	U
Toluene	ND	1.00	"	"	"	JSM	"	"	U
Xylenes, total	ND	1.00	"	"	"	JSM	"	"	U

Surrogate: 1,2-Dichloroethane-d4	103 %	70-130			"		"	"	
Surrogate: Toluene-d8	101 %	70-130			"		"	"	
Surrogate: 4-Bromofluorobenzene	94.8 %	70-130			"		"	"	

Origins Laboratory, Inc.



The results in this report apply to the samples analyzed in accordance with the chain of custody document. This analytical report must be reproduced in its entirety.



Eagle Environmental Consulting, LLC  
8000 W 44th Ave  
Wheat Ridge CO 80033

Andrew Newberry  
Project Number: [none]  
Project: Noble - Huntsman G #13-10

## MW-02

10/17/2023 11:20:00AM

Analyte	Result	Reporting Limit	Units	Dilution	Batch	Analyst	Prepared	Analyzed	Notes
---------	--------	-----------------	-------	----------	-------	---------	----------	----------	-------

## Origins Laboratory, Inc. Y310479-02 (Water)

### BTEX+N+TMBs by 8260D

1,2,4-Trimethylbenzene	2.00	2.00	ug/L	1	B3J1817	JSM	10/18/2023	10/18/2023	
1,3,5-Trimethylbenzene	ND	2.00	"	"	"	JSM	"	"	U
Benzene	ND	1.00	"	"	"	JSM	"	"	U
Ethylbenzene	2.84	1.00	"	"	"	JSM	"	"	
Naphthalene	ND	2.00	"	"	"	JSM	"	"	U
Toluene	ND	1.00	"	"	"	JSM	"	"	U
Xylenes, total	ND	1.00	"	"	"	JSM	"	"	U

Surrogate: 1,2-Dichloroethane-d4	99.2 %	70-130			"	"	"
Surrogate: Toluene-d8	101 %	70-130			"	"	"
Surrogate: 4-Bromofluorobenzene	98.6 %	70-130			"	"	"

Origins Laboratory, Inc.



The results in this report apply to the samples analyzed in accordance with the chain of custody document. This analytical report must be reproduced in its entirety.

Eagle Environmental Consulting, LLC  
8000 W 44th Ave  
Wheat Ridge CO 80033

Andrew Newberry  
Project Number: [none]  
Project: Noble - Huntsman G #13-10

## MW-03

10/17/2023 11:40:00AM

Analyte	Result	Reporting Limit	Units	Dilution	Batch	Analyst	Prepared	Analyzed	Notes
---------	--------	-----------------	-------	----------	-------	---------	----------	----------	-------

## Origins Laboratory, Inc. Y310479-03 (Water)

### BTEX+N+TMBs by 8260D

1,2,4-Trimethylbenzene	2.00	2.00	ug/L	1	B3J1817	JSM	10/18/2023	10/18/2023	
1,3,5-Trimethylbenzene	ND	2.00	"	"	"	JSM	"	"	U
Benzene	ND	1.00	"	"	"	JSM	"	"	U
Ethylbenzene	ND	1.00	"	"	"	JSM	"	"	U
Naphthalene	ND	2.00	"	"	"	JSM	"	"	U
Toluene	ND	1.00	"	"	"	JSM	"	"	U
Xylenes, total	ND	1.00	"	"	"	JSM	"	"	U

Surrogate: 1,2-Dichloroethane-d4	99.6 %	70-130			"		"	"	
Surrogate: Toluene-d8	105 %	70-130			"		"	"	
Surrogate: 4-Bromofluorobenzene	94.8 %	70-130			"		"	"	

Origins Laboratory, Inc.



The results in this report apply to the samples analyzed in accordance with the chain of custody document. This analytical report must be reproduced in its entirety.

Eagle Environmental Consulting, LLC  
8000 W 44th Ave  
Wheat Ridge CO 80033

Andrew Newberry  
Project Number: [none]  
Project: Noble - Huntsman G #13-10

## MW-04

10/17/2023 12:00:00PM

Analyte	Result	Reporting Limit	Units	Dilution	Batch	Analyst	Prepared	Analyzed	Notes
---------	--------	-----------------	-------	----------	-------	---------	----------	----------	-------

## Origins Laboratory, Inc. Y310479-04 (Water)

### BTEX+N+TMBs by 8260D

1,2,4-Trimethylbenzene	ND	2.00	ug/L	1	B3J1817	JSM	10/18/2023	10/18/2023	U
1,3,5-Trimethylbenzene	ND	2.00	"	"	"	JSM	"	"	U
Benzene	ND	1.00	"	"	"	JSM	"	"	U
Ethylbenzene	ND	1.00	"	"	"	JSM	"	"	U
Naphthalene	ND	2.00	"	"	"	JSM	"	"	U
Toluene	ND	1.00	"	"	"	JSM	"	"	U
Xylenes, total	ND	1.00	"	"	"	JSM	"	"	U

Surrogate: 1,2-Dichloroethane-d4	102 %	70-130	"	"	"
Surrogate: Toluene-d8	100 %	70-130	"	"	"
Surrogate: 4-Bromofluorobenzene	96.8 %	70-130	"	"	"

Origins Laboratory, Inc.



The results in this report apply to the samples analyzed in accordance with the chain of custody document. This analytical report must be reproduced in its entirety.

Eagle Environmental Consulting, LLC  
8000 W 44th Ave  
Wheat Ridge CO 80033

Andrew Newberry  
Project Number: [none]  
Project: Noble - Huntsman G #13-10

## MW-05

10/17/2023 12:20:00PM

Analyte	Result	Reporting Limit	Units	Dilution	Batch	Analyst	Prepared	Analyzed	Notes
---------	--------	-----------------	-------	----------	-------	---------	----------	----------	-------

## Origins Laboratory, Inc. Y310479-05 (Water)

### BTEX+N+TMBs by 8260D

1,2,4-Trimethylbenzene	ND	2.00	ug/L	1	B3J1817	JSM	10/18/2023	10/18/2023	U
1,3,5-Trimethylbenzene	ND	2.00	"	"	"	JSM	"	"	U
Benzene	ND	1.00	"	"	"	JSM	"	"	U
Ethylbenzene	2.82	1.00	"	"	"	JSM	"	"	
Naphthalene	ND	2.00	"	"	"	JSM	"	"	U
Toluene	ND	1.00	"	"	"	JSM	"	"	U
Xylenes, total	ND	1.00	"	"	"	JSM	"	"	U

Surrogate: 1,2-Dichloroethane-d4	100 %	70-130			"		"	"	
Surrogate: Toluene-d8	101 %	70-130			"		"	"	
Surrogate: 4-Bromofluorobenzene	96.7 %	70-130			"		"	"	

Origins Laboratory, Inc.



The results in this report apply to the samples analyzed in accordance with the chain of custody document. This analytical report must be reproduced in its entirety.

Eagle Environmental Consulting, LLC  
8000 W 44th Ave  
Wheat Ridge CO 80033

Andrew Newberry  
Project Number: [none]  
Project: Noble - Huntsman G #13-10

## Volatile Organic Compounds by GC/MS SW846 8260D - Quality Control

### Origins Laboratory, Inc.

Analyte	Result	Reporting Limit	Units	Spike Level	Source Result	%REC	%REC Limits	RPD	RPD Limit	Notes
Batch B3J1817 - EPA 5030B (Water)										
Blank (B3J1817-BLK1)					Prepared: 10/18/2023 Analyzed: 10/18/2023					
1,2,4-Trimethylbenzene	ND	2.00	ug/L							U
1,3,5-Trimethylbenzene	ND	2.00	"							U
Benzene	ND	1.00	"							U
Ethylbenzene	ND	1.00	"							U
Naphthalene	ND	2.00	"							U
Toluene	ND	1.00	"							U
Xylenes, total	ND	1.00	"							U
Surrogate: 1,2-Dichloroethane-d4	66		"	62.5		106	70-130			
Surrogate: Toluene-d8	64		"	62.5		103	70-130			
Surrogate: 4-Bromofluorobenzene	59		"	62.5		95.1	70-130			

Origins Laboratory, Inc.



The results in this report apply to the samples analyzed in accordance with the chain of custody document. This analytical report must be reproduced in its entirety.

Eagle Environmental Consulting, LLC  
8000 W 44th Ave  
Wheat Ridge CO 80033

Andrew Newberry  
Project Number: [none]  
Project: Noble - Huntsman G #13-10

**Volatile Organic Compounds by GC/MS SW846 8260D - Quality Control**  
**Origins Laboratory, Inc.**

Analyte	Result	Reporting Limit	Units	Spike Level	Source Result	%REC	%REC Limits	RPD	RPD Limit	Notes
<b>Batch B3J1817 - EPA 5030B (Water)</b>										
<b>LCS (B3J1817-BS1)</b>					Prepared: 10/18/2023 Analyzed: 10/18/2023					
1,2,4-Trimethylbenzene	59.2	2.00	ug/L	50.0		118	70-130			
1,3,5-Trimethylbenzene	57.5	2.00	"	50.0		115	70-130			
Benzene	54.9	1.00	"	50.0		110	70-130			
Ethylbenzene	58.6	1.00	"	50.0		117	70-130			
m,p-Xylene	114	2.00	"	100		114	70-130			
Naphthalene	53.5	2.00	"	50.0		107	70-130			
o-Xylene	56.4	1.00	"	50.0		113	70-130			
Toluene	59.4	1.00	"	50.0		119	70-130			
Surrogate: 1,2-Dichloroethane-d4	65		"	62.5		104	70-130			
Surrogate: Toluene-d8	65		"	62.5		104	70-130			
Surrogate: 4-Bromofluorobenzene	67		"	62.5		107	70-130			

Origins Laboratory, Inc.



*The results in this report apply to the samples analyzed in accordance with the chain of custody document. This analytical report must be reproduced in its entirety.*



Eagle Environmental Consulting, LLC  
8000 W 44th Ave  
Wheat Ridge CO 80033

Andrew Newberry  
Project Number: [none]  
Project: Noble - Huntsman G #13-10

**Volatile Organic Compounds by GC/MS SW846 8260D - Quality Control**  
**Origins Laboratory, Inc.**

Analyte	Result	Reporting Limit	Units	Spike Level	Source Result	%REC	%REC Limits	RPD	RPD Limit	Notes
---------	--------	-----------------	-------	-------------	---------------	------	-------------	-----	-----------	-------

**Batch B3J1817 - EPA 5030B (Water)**

Matrix Spike (B3J1817-MS1)		Source: Y310447-01			Prepared: 10/18/2023 Analyzed: 10/18/2023					
1,2,4-Trimethylbenzene	64.7	2.00	ug/L	50.0	2.59	124	70-130			
1,3,5-Trimethylbenzene	63.2	2.00	"	50.0	ND	126	70-130			
Benzene	59.0	1.00	"	50.0	0.640	117	70-130			
Ethylbenzene	63.8	1.00	"	50.0	2.89	122	70-130			
m,p-Xylene	124	2.00	"	100	1.14	123	70-130			
Naphthalene	51.0	2.00	"	50.0	0.190	102	70-130			
o-Xylene	62.4	1.00	"	50.0	ND	125	70-130			
Toluene	64.5	1.00	"	50.0	0.290	128	70-130			
Surrogate: 1,2-Dichloroethane-d4	63		"	62.5		100	70-130			
Surrogate: Toluene-d8	67		"	62.5		107	70-130			
Surrogate: 4-Bromofluorobenzene	66		"	62.5		105	70-130			

Origins Laboratory, Inc.



*The results in this report apply to the samples analyzed in accordance with the chain of custody document. This analytical report must be reproduced in its entirety.*

Eagle Environmental Consulting, LLC  
8000 W 44th Ave  
Wheat Ridge CO 80033

Andrew Newberry  
Project Number: [none]  
Project: Noble - Huntsman G #13-10

**Volatile Organic Compounds by GC/MS SW846 8260D - Quality Control**  
**Origins Laboratory, Inc.**

Analyte	Result	Reporting Limit	Units	Spike Level	Source Result	%REC	%REC Limits	RPD	RPD Limit	Notes
<b>Batch B3J1817 - EPA 5030B (Water)</b>										
<b>Matrix Spike Dup (B3J1817-MSD1)</b>	<b>Source: Y310447-01</b>				Prepared: 10/18/2023 Analyzed: 10/18/2023					
1,2,4-Trimethylbenzene	74.7	2.00	ug/L	50.0	2.59	144	70-130	14.3	20	QM-07
1,3,5-Trimethylbenzene	74.2	2.00	"	50.0	ND	148	70-130	15.9	20	QM-07
Benzene	72.2	1.00	"	50.0	0.640	143	70-130	20.2	20	QM-07
Ethylbenzene	77.4	1.00	"	50.0	2.89	149	70-130	19.2	20	QM-07
m,p-Xylene	150	2.00	"	100	1.14	149	70-130	19.3	20	QM-07
Naphthalene	61.5	2.00	"	50.0	0.190	123	70-130	18.7	20	
o-Xylene	73.3	1.00	"	50.0	ND	147	70-130	16.2	20	QM-07
Toluene	76.6	1.00	"	50.0	0.290	153	70-130	17.1	20	QM-07
Surrogate: 1,2-Dichloroethane-d4	63		"	62.5		101	70-130			
Surrogate: Toluene-d8	66		"	62.5		105	70-130			
Surrogate: 4-Bromofluorobenzene	67		"	62.5		107	70-130			

Origins Laboratory, Inc.



The results in this report apply to the samples analyzed in accordance with the chain of custody document. This analytical report must be reproduced in its entirety.

Eagle Environmental Consulting, LLC  
8000 W 44th Ave  
Wheat Ridge CO 80033

Andrew Newberry  
Project Number: [none]  
Project: Noble - Huntsman G #13-10

### Notes and Definitions

U Sample is Non-Detect.

QM-07 The spike recovery was outside acceptance limits for the MS and/or MSD. The batch was accepted based on acceptable LCS recovery.

ND Analyte NOT DETECTED at or above the reporting limit

RPD Relative Percent Difference

All soil results are reported at a wet weight basis.

Origins Laboratory, Inc.



*The results in this report apply to the samples analyzed in accordance with the chain of custody document. This analytical report must be reproduced in its entirety.*



November 07, 2023

Eagle Environmental Consulting, LLC

Andrew Newberry

8000 W 44th Ave

Wheat Ridge CO 80033

Project Name - Noble - Huntsman G #13-10

Project Number - [none]

Attached are your analytical results for Noble - Huntsman G #13-10 received by Origins Laboratory, Inc. October 17, 2023. This project is associated with Origins project number Y310480-01.

The analytical results in the following report were analyzed under the guidelines of EPA Methods. These methods are identified as follows; "SW" are defined in SW-846, "EPA" are defined in 40CFR part 136 and "SM" are defined in the most current revision of Standard Methods For the Examination of Water and Wastewater.

The analytical results apply specifically to the samples and analyses specified per the attached Chain of Custody. As such, this report shall not be reproduced except in full, without the written approval of Origin's laboratory.

Unless otherwise noted, the analytical results for all soil samples are reported on a wet weight basis. All analytical analyses were performed under NELAP guidelines unless noted by a data qualifier.

Any holding time exceedances, deviations from the method specifications or deviations from Origins Laboratory's Standard Operating Procedures are outlined in the case narrative.

Thank you for selecting Origins for your analytical needs. Please contact us with any questions concerning this report, or if we can help with anything at all.

Origins Laboratory, Inc.  
303.433.1322  
o-squad@oelabinc.com



1725 Elk Place, Denver, CO 80211 | Phone: 303.433.1322 | Fax: 303.265.9645

Eagle Environmental Consulting, LLC

8000 W 44th Ave

Wheat Ridge CO 80033

Andrew Newberry

Project Number: [none]

Project: Noble - Huntsman G #13-10

## CROSS REFERENCE REPORT

Sample ID	Laboratory ID	Matrix	Date Sampled	Date Received
MW-01	Y310480-01	Water	October 17, 2023 11:00	10/17/2023 18:05
MW-02	Y310480-02	Water	October 17, 2023 11:20	10/17/2023 18:05
MW-03	Y310480-03	Water	October 17, 2023 11:40	10/17/2023 18:05
MW-04	Y310480-04	Water	October 17, 2023 12:00	10/17/2023 18:05
MW-05	Y310480-05	Water	October 17, 2023 12:20	10/17/2023 18:05

Origins Laboratory, Inc.



*The results in this report apply to the samples analyzed in accordance with the chain of custody document. This analytical report must be reproduced in its entirety.*

Eagle Environmental Consulting, LLC  
8000 W 44th Ave  
Wheat Ridge CO 80033

Andrew Newberry  
Project Number: [none]  
Project: Noble - Huntsman G #13-10

**ORIGINS** LABORATORY, INC

Client: Eagle Environmental Consulting  
Address: 8000 W. 44th Ave.  
Wheat Ridge, CO 80033  
Telephone Number: 303-433-3479  
Email Address: anewberry@eagle-enviro.com

Project Manager: Andrew Newberry  
Project Name: Huntsman G #13-10  
Project Number: 1  
Samples Collected By: Bill

www.originslaboratory.com

page 1 of 1

310480

Sample ID Description	Date Sampled	Time Sampled	# of Containers	Preservative				Matrix			Analysis	Sample Instructions	
				Unpreserved	HCl	HNO <sub>3</sub>	Other	Groundwater	Soil	Air Summa Canister #			Other
MW-01	10-17-23	11:00	1	X				X			TDS-2540C	X	1
MW-02		11:20	1	X				X			Salicylate-EPA300.0	X	2
MW-03		11:40	1	X				X			Chloride-EPA300.0	X	3
MW-04		12:00	1	X				X					4
MW-05		12:20	1	X				X					5
													6
													7
													8
													9
													10

Relinquished By: Blake Ulrich  
Date: 10-17-23  
Time: 1:05

Received By: [Signature]  
Date: 10/17/23  
Time: 18:05

Turnaround Time:  
Same Day ☐ 24 Hr ☐  
48 Hr ☐ 72 Hr ☐  
Standard ☒

Temp Received- 1-1

Date Results Needed 1-1

Relinquished By: Bill to Dan

Origins Laboratory, Inc.

*J. Bynon*

The results in this report apply to the samples analyzed in accordance with the chain of custody document. This analytical report must be reproduced in its entirety.



Eagle Environmental Consulting, LLC  
8000 W 44th Ave  
Wheat Ridge CO 80033

Andrew Newberry  
Project Number: [none]  
Project: Noble - Huntsman G #13-10

Origins Laboratory

F-012207-01-R1  
Effective Date: 01/09/12

## Sample Receipt Checklist

Origins Work Order: UB0480

Client: Eagle

Client Project ID: Huntsman G #13-10

Checklist Completed by: TJTVHS

Shipped Via: TD

(UPS, FedEx, Hand Delivered, Pick-up, etc.)

Date/time completed: 10/18/23

Airbill #: N/A

Matrix(s) Received: (Check all that apply): Soil/Solid X Water Other:

Cooler Number/Temperature: 1 / 1.4 °C 1 / 1 °C 1 / 1 °C (Describe)

Thermometer ID: T004

Requirement Description	Yes	No	N/A	Comments (if any)
If samples require cooling, was the temperature between 0°C to ≤ 6°C <sup>(1)</sup> ?	<input checked="" type="checkbox"/>	<input type="checkbox"/>	<input type="checkbox"/>	
Is there ice present (document if blue ice is used)	<input checked="" type="checkbox"/>	<input type="checkbox"/>	<input type="checkbox"/>	
Are custody seals present on cooler? (if so, document in comments if they are signed and dated, broken or intact)	<input type="checkbox"/>	<input checked="" type="checkbox"/>	<input type="checkbox"/>	
Are custody seals present on each sample container? (if so, document in comments if they are signed and dated, broken or intact)	<input type="checkbox"/>	<input checked="" type="checkbox"/>	<input type="checkbox"/>	
Were all samples received intact <sup>(1)</sup> ?	<input checked="" type="checkbox"/>	<input type="checkbox"/>	<input type="checkbox"/>	
Was adequate sample volume provided <sup>(1)</sup> ?	<input checked="" type="checkbox"/>	<input type="checkbox"/>	<input type="checkbox"/>	
Are short holding time analytes or samples with HTs due within 48 hours present <sup>(1)</sup> ?	<input type="checkbox"/>	<input checked="" type="checkbox"/>	<input type="checkbox"/>	
Is a chain-of-custody (COC) present and filled out completely <sup>(1)</sup> ?	<input checked="" type="checkbox"/>	<input type="checkbox"/>	<input type="checkbox"/>	
Does the COC agree with the number and type of sample bottles received <sup>(1)</sup> ?	<input checked="" type="checkbox"/>	<input type="checkbox"/>	<input type="checkbox"/>	
Do the sample IDs on the bottle labels match the COC <sup>(1)</sup> ?	<input checked="" type="checkbox"/>	<input type="checkbox"/>	<input type="checkbox"/>	
Is the COC properly relinquished by the client with date and time recorded <sup>(1)</sup> ?	<input checked="" type="checkbox"/>	<input type="checkbox"/>	<input type="checkbox"/>	
For volatiles in water – is there headspace (> ¼ inch bubble) present? If yes, contact client and note in narrative.	<input type="checkbox"/>	<input type="checkbox"/>	<input checked="" type="checkbox"/>	
Are samples preserved that require preservation and was it checked <sup>(1)</sup> ? (note ID of confirmation instrument used in comments) / (preservation is not confirmed for subcontracted analyses in order to insure sample integrity)/(pH <2 for samples preserved with HNO <sub>3</sub> , HCL, H <sub>2</sub> SO <sub>4</sub> ) / (pH >10 for samples preserved with NaAsO <sub>2</sub> +NaOH, ZnAc+NaOH)	<input type="checkbox"/>	<input type="checkbox"/>	<input checked="" type="checkbox"/>	
Additional Comments (if any):				

<sup>(1)</sup>If NO, then contact the client before proceeding with analysis and note date/time and person contacted as well as the corrective action to in the additional comments (above) and the case narrative.

Reviewed by (Project Manager) [Signature]

10/19/23  
Date/Time Reviewed

Origins Laboratory, Inc.

[Signature]

The results in this report apply to the samples analyzed in accordance with the chain of custody document. This analytical report must be reproduced in its entirety.

Eagle Environmental Consulting, LLC  
8000 W 44th Ave  
Wheat Ridge CO 80033

Andrew Newberry  
Project Number: [none]  
Project: Noble - Huntsman G #13-10

MW-01

10/17/2023 11:00:00AM

Analyte	Result	Reporting Limit	Units	Dilution	Batch	Analyst	Prepared	Analyzed	Notes
---------	--------	--------------------	-------	----------	-------	---------	----------	----------	-------

Origins Laboratory, Inc.  
Y310480-01 (Water)

Anions by IC 300.0

Chloride	754	31.2	mg/L	125	B3J2710	ACC	10/27/2023	11/04/2023	
Sulfate	625	31.2	"	"	"	ACC	"	"	

Total Dissolved Solids by 2540C

Total Dissolved Solids	2650	5.00	"	1	B3J2019	KRM	10/20/2023	10/20/2023	
------------------------	------	------	---	---	---------	-----	------------	------------	--

Origins Laboratory, Inc.



The results in this report apply to the samples analyzed in accordance with the chain of custody document. This analytical report must be reproduced in its entirety.

Eagle Environmental Consulting, LLC  
8000 W 44th Ave  
Wheat Ridge CO 80033

Andrew Newberry  
Project Number: [none]  
Project: Noble - Huntsman G #13-10

## MW-02

10/17/2023 11:20:00AM

Analyte	Result	Reporting Limit	Units	Dilution	Batch	Analyst	Prepared	Analyzed	Notes
---------	--------	-----------------	-------	----------	-------	---------	----------	----------	-------

## Origins Laboratory, Inc. Y310480-02 (Water)

### Anions by IC 300.0

Chloride	727	31.2	mg/L	125	B3J2710	ACC	10/27/2023	11/04/2023	
Sulfate	567	31.2	"	"	"	ACC	"	"	

### Total Dissolved Solids by 2540C

Total Dissolved Solids	2490	5.00	"	1	B3J2019	KRM	10/20/2023	10/20/2023	
------------------------	------	------	---	---	---------	-----	------------	------------	--

Origins Laboratory, Inc.



The results in this report apply to the samples analyzed in accordance with the chain of custody document. This analytical report must be reproduced in its entirety.

Eagle Environmental Consulting, LLC  
8000 W 44th Ave  
Wheat Ridge CO 80033

Andrew Newberry  
Project Number: [none]  
Project: Noble - Huntsman G #13-10

MW-03

10/17/2023 11:40:00AM

Analyte	Result	Reporting Limit	Units	Dilution	Batch	Analyst	Prepared	Analyzed	Notes
---------	--------	--------------------	-------	----------	-------	---------	----------	----------	-------

Origins Laboratory, Inc.  
Y310480-03 (Water)

Anions by IC 300.0

Chloride	755	31.2	mg/L	125	B3J2710	ACC	10/27/2023	11/04/2023	
Sulfate	449	31.2	"	"	"	ACC	"	"	

Total Dissolved Solids by 2540C

Total Dissolved Solids	2490	5.00	"	1	B3J2019	KRM	10/20/2023	10/20/2023	
------------------------	------	------	---	---	---------	-----	------------	------------	--

Origins Laboratory, Inc.



The results in this report apply to the samples analyzed in accordance with the chain of custody document. This analytical report must be reproduced in its entirety.

Eagle Environmental Consulting, LLC  
8000 W 44th Ave  
Wheat Ridge CO 80033

Andrew Newberry  
Project Number: [none]  
Project: Noble - Huntsman G #13-10

**MW-04**

**10/17/2023 12:00:00PM**

Analyte	Result	Reporting Limit	Units	Dilution	Batch	Analyst	Prepared	Analyzed	Notes
---------	--------	--------------------	-------	----------	-------	---------	----------	----------	-------

**Origins Laboratory, Inc.**  
**Y310480-04 (Water)**

**Anions by IC 300.0**

Chloride	763	31.2	mg/L	125	B3J2710	ACC	10/27/2023	11/04/2023	
Sulfate	573	31.2	"	"	"	ACC	"	"	

**Total Dissolved Solids by 2540C**

Total Dissolved Solids	2570	5.00	"	1	B3J2019	KRM	10/20/2023	10/20/2023	
------------------------	------	------	---	---	---------	-----	------------	------------	--

Origins Laboratory, Inc.



*The results in this report apply to the samples analyzed in accordance with the chain of custody document. This analytical report must be reproduced in its entirety.*

Eagle Environmental Consulting, LLC  
8000 W 44th Ave  
Wheat Ridge CO 80033

Andrew Newberry  
Project Number: [none]  
Project: Noble - Huntsman G #13-10

MW-05

10/17/2023 12:20:00PM

Analyte	Result	Reporting Limit	Units	Dilution	Batch	Analyst	Prepared	Analyzed	Notes
---------	--------	--------------------	-------	----------	-------	---------	----------	----------	-------

Origins Laboratory, Inc.  
Y310480-05 (Water)

Anions by IC 300.0

Chloride	639	31.2	mg/L	125	B3J2710	ACC	10/27/2023	11/04/2023	
Sulfate	451	31.2	"	"	"	ACC	"	"	

Total Dissolved Solids by 2540C

Total Dissolved Solids	2120	5.00	"	1	B3J2019	KRM	10/20/2023	10/20/2023	
------------------------	------	------	---	---	---------	-----	------------	------------	--

Origins Laboratory, Inc.



The results in this report apply to the samples analyzed in accordance with the chain of custody document. This analytical report must be reproduced in its entirety.



Eagle Environmental Consulting, LLC  
8000 W 44th Ave  
Wheat Ridge CO 80033

Andrew Newberry  
Project Number: [none]  
Project: Noble - Huntsman G #13-10

## Classical Chemistry Parameters - Quality Control Origins Laboratory, Inc.

Analyte	Result	Reporting Limit	Units	Spike Level	Source Result	%REC	%REC Limits	RPD	RPD Limit	Notes
<b>Batch B3J2019 - NO PREP</b>										
<b>Blank (B3J2019-BLK1)</b>					Prepared: 10/20/2023 Analyzed: 10/20/2023					
Total Dissolved Solids	ND	5.00	mg/L							
<b>LCS (B3J2019-BS1)</b>					Prepared: 10/20/2023 Analyzed: 10/20/2023					
Total Dissolved Solids	1010	5.00	mg/L	1010		99.6	90-110			
<b>Duplicate (B3J2019-DUP1)</b>		<b>Source: Y310480-01</b>			Prepared: 10/20/2023 Analyzed: 10/20/2023					
Total Dissolved Solids	2640	5.00	mg/L		2650			0.303	10	
<b>Batch B3J2710 - Filter .45um non acidified</b>										
<b>Blank (B3J2710-BLK1)</b>					Prepared: 10/27/2023 Analyzed: 11/06/2023					
Chloride	ND	0.250	mg/L							U
Sulfate	ND	0.250	"							U
<b>LCS (B3J2710-BS1)</b>					Prepared: 10/27/2023 Analyzed: 11/03/2023					
Chloride	4.40	0.250	mg/L	4.00		110	90-110			
Sulfate	4.36	0.250	"	4.00		109	90-110			
<b>Matrix Spike (B3J2710-MS1)</b>		<b>Source: Y310505-01</b>			Prepared: 10/27/2023 Analyzed: 11/03/2023					
Chloride	834		mg/L	500	311	105	90-110			
Sulfate	621		"	500	87.0	107	90-110			
<b>Matrix Spike Dup (B3J2710-MSD1)</b>		<b>Source: Y310505-01</b>			Prepared: 10/27/2023 Analyzed: 11/03/2023					
Chloride	846		mg/L	500	311	107	90-110	1.37	5	
Sulfate	628		"	500	87.0	108	90-110	1.13	5	

Origins Laboratory, Inc.



The results in this report apply to the samples analyzed in accordance with the chain of custody document. This analytical report must be reproduced in its entirety.

Eagle Environmental Consulting, LLC

8000 W 44th Ave

Wheat Ridge CO 80033

Andrew Newberry

Project Number: [none]

Project: Noble - Huntsman G #13-10

### Notes and Definitions

U Sample is Non-Detect.

ND Analyte NOT DETECTED at or above the reporting limit

RPD Relative Percent Difference

All soil results are reported at a wet weight basis.

Origins Laboratory, Inc.



*The results in this report apply to the samples analyzed in accordance with the chain of custody document. This analytical report must be reproduced in its entirety.*