

Jim McKee
Oil and Gas Commission
Colorado State Office Bldg.
1313 Sherman Street
Denver, Colorado.

RECEIVED
JAN 9 1981
COLO. OIL & GAS CONS. COMM.



Dear Jim,

Enclosed is a brief summary of activities, a list of current options, and a series of sketches showing conditions on the Marland Well.

Currently, Tuesday January 6, 1981, we have a work-over rig from Colorado Well Service with a hydraulic swivel standing-by. We are also set up to mix and run drilling mud.

The Water and Power Resources Service and I would appreciate any assistance and suggestions you might have.

Our objectives are:

1. Verify the Marland Well is losing water to the upper formations.
2. Plug the Marland Well below, through and above the Entrada Formation
3. If no 2 impossible plug above the Entrada.

(over)



00038243

68

With a drill bit (milling cone) and
now about 90 feet of drill stem stuck
we may have to pull off this
hole and try something else.

Any suggestions you would
have would be appreciated.

WPRS appear willing to budget the necessary
money to get the job done.

Sincerely,

Vern W. Butler
CH2M Hill.

P.S. I'm staying at the Valley Motel,
Kreeker - 878-3656 and can
be reached there.

SUBJECT Meeker Dome Verification
ProgramBY V.W. Butler DATE 1/4/80

SHEET NO. _____ OF _____

PROJECT NO. D 12802.130

RECEIVED

JAN 9 1981

COLO. OIL & GAS CONS. COMM.

SUMMARY OF ACTIVITIES
MARLAND WELL DAILY LOG

| DATE | ACTIVITY | Hours |
|----------|--|----------|
| 12/9/80 | Road Rig #30 to Location, Started to Rig Up. | 6 |
| 12/10/80 | Installed Winterizing Screens other equipment | 8 |
| 12/11/80 | Continue Rigging up. Installed well head | 8 |
| 12/12/80 | Shut down | |
| 12/13/80 | Continue Rigging Up & Setting Equipment Nipple-up and Start into hole @ 10:30p | 8 8 |
| 12/14/80 | Ran drill pipe and collars. Hit obstruction 119'. Frozen Pipes Ordered LCM Mixed Ran Still Losing Circulation. Ordered Cement. Cementing 5:00p to 7:00p. ¹⁰⁰ W.D.C. | 12 12 |
| 12/15/80 | Drilling @ 3:00p.m. Drill to 130'. Pushing & drilling plug Continue drilling to 150' losing circulation. Continue LCM & Mud | 12 7 |
| 12/16/80 | Mixed more mud. Power swivel went down. Worked on Equip. Changed swivel. Started drilling from 150' to 450' well Started flowing at 170' Approx. 250 gpm. | 7 12 |
| 12/17/80 | Continue drilling to 610'. Pushing wood plug. Getting back sand Continue losing water. Plugged bit. Pulled drill pipe Returned into hole. Lost 130' of hole. Pulled out of hole and rigged to pit with flowing water. Called logger and cementor. Obs. wells fluctuating greatly with pumping. | 12 12 |
| 12/18/80 | Prained and cleaned pits. Logged well 8:00a. to 10:00a. to 323' Halliburton arrived 3:00p. Cemented ^{2005K} to 6:30p. tagged cement at 40'. Prepared rig to drill next morning | 12 12 |
| 12/19/80 | Drilled on cement to 90' Continued cement drilling to 450'. Shale/Cement to about 280' No loss of water Broke thru cement about 320' and hit shale/sand. At 380' Hit iron and drilled for 2 hours with no progress. Pulled drill bit and started to run impression block. Limited by size of hole | 12 12 |
| 12/20/80 | Installed flat bottom mill. Reamed hole to 120'. Lost circulation. Ordered cone mill. Mixed mud W.h. at 120'. Ran two tanks mud and LCM Started | 12 12 |

00038296



SUBJECT _____ BY _____ DATE _____
SHEET NO. _____ OF _____
PROJECT NO. _____

| DATE | ACTIVITY | HOURS |
|------------------|--|-------|
| 12/21/80 | Continue drilling, losing circulation. Hit iron at 380' Milled for hour. Broke thru, Down to 640' when hit wood plug again. Pushed to 640' Called Halliburton. Started out of hole. Pulled 120' hard. Stuck Cone mill at 520' Continued circulating until 5:30p when Halliburton showed up. Kept Halliburton an hours Called for wireline service. At 10:00p.m started getting backflow of about 60 gpm. | 12 |
| 12/22/80 | Standby rig waiting on wireline. Checked flow for ~60 gpm. Temperature 99°F. Change swivel. Wireline on site. Stuck at 435' Backed off drill stem at 406' Ordered out Halliburton. Ran impression block. Hit jagged drill stem at 406' Cemented 100 Sx. No pressure or loss | 8 |
| 12/23/80 | Waiting on cement and night "sub" Shutdown for Christmas at 12:00 noon. | 12 |
| 12/24/80 | SHUTDOWN | 8 |
| 12/25/80 | Shutdown | |
| 12/26/80 | Shutdown | |
| 12/27/80 | W.h. @ 120' Cement at 198' losing Circulation Drilled To 270' Continued losing water Decided to cement Cemented with 200 Sx. Filled hole. Displaced 36' | 12 |
| 12/28/80 | W.h. at Top BOP. Cement at 36' Drilled with short Toothed mill. Swivel broke down. Several Times. Continued drilling 150' Swivel still breaking down No loss of circulation | 12 |
| 12/29/80 | Continued drilling. Broke thru cement about 295' lost Circulation Cemented 112' plug. Displaced by 40' let set. Kept Halliburton. Returned into hole at 9:00p.m. Drilled 30' and lost circulation. Called Halliburton back. | 12 |
| 12/30/80 Tue. | Cemented 24 Sx. plug of about 70' let set to 8:00a. W.h. @ 120' Cement at 136' Decided to set another plug of 32'. let set to 6:00p. W.h. @ 45' Cement at 110'. Started drilling with mud. Swivel broke down. Ordered another. | 12 |

██████████
80036237



SUBJECT _____ BY _____ DATE _____
SHEET NO. _____ OF _____
PROJECT NO. _____

| DATE | ACTIVITY | HRS. |
|----------|---|------|
| 12/31/80 | Changed power swivel. Drilled cement to 180' | 12 |
| | Continued drilling to 325' where hit iron. Ran impression block. Returned part of casing. | 12 |
| | No loss of water | |
| 1/1/81 | Continued milling to about 400' by noon | 12 |
| | Continued milling to 406' where hit drill stem | |
| | Milled 20' of drill stem when broke out of cement | 12 |
| 1/2/81 | Pulled out of hole. Picked up overshot to get over drill stem joint. Unsuccessful. Milled another 5'. | |
| | Tried again with overshot on pipe. Unsuccessful. | |
| | Rigged up impression block. Ran in and hit shifted casing at 380' | 12 |
| | Cleaned up rig. Drained and prepared to shutdown | 8 |



MARLAND WELL CURRENT OPTIONS 1/5/81

1. PULL OFF HOLE - LEAVE OPEN
2. PLUG HOLE - PULL OFF
3. RUN CASING ROLLER TO
ALIGN CASING
4. MILL CASING FROM TOP
5. DRILL PARALLEL HOLE
6. RUN INSIDE LINER
7. RUN ANOTHER TAPERED MILL


00038295



SUBJECT _____ BY _____ DATE _____
SHEET NO. _____ OF _____
PROJECT NO. _____

MARLAND WELL COST-1/3/80

| | |
|-------------------------|-----------|
| DRILL RIG, EQUIP, CREW. | \$ 94,500 |
| CEMENTING | 17,900 |
| LOGGING & WIRELINE | 3,900 |
| OTHER | 22,300 |

| | |
|----------|---------|
| SUBTOTAL | 138,600 |
|----------|---------|

| | |
|--------------|--------|
| OTHER RENTAL | 10,000 |
|--------------|--------|

| | |
|----------|---------|
| SUBTOTAL | 148,600 |
|----------|---------|

| | |
|-----------------------|--------|
| CH2M HILL TIME & EXP. | 16,400 |
|-----------------------|--------|

| | |
|-------|------------|
| TOTAL | \$ 165,000 |
|-------|------------|





SUBJECT _____

BY _____

DATE _____

SHEET NO. _____ OF _____

PROJECT NO. _____

MARLAND WELL - 1/2/88 - 12:00 P.

- 0'-G.L.

0'-G.L.

- 60'

Dakota

- 210'

Morrison

- 520'

- 380' Casing
- 406' shift
- 430'± Top of
Drill Stem

- 520' Cone
Mill

- 640 Wood
Plug

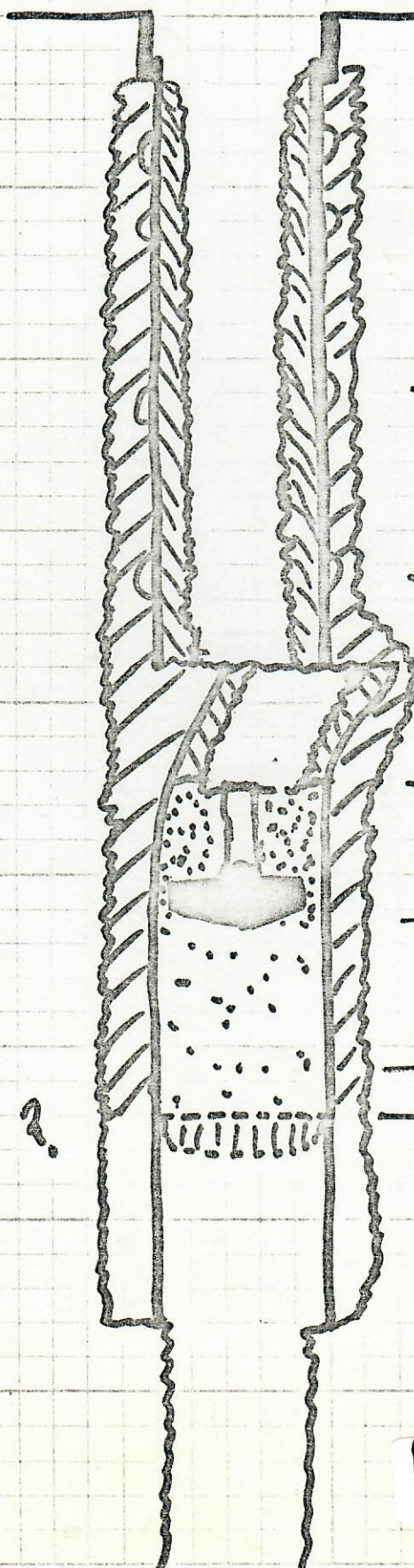
Entrada

- 760? Bottom
Casing

- 980'



MARLAND WELL - 1/2/80' - 12:00 P.



- 0.0 Top BOP
- 14.0' Top old Casing
- 36.1' Top Cement in Casing
- 45' } Hole?
- 120' }

-226 Hole?

-315' Hole?

-320' Shift?

— 425'± Bottom of
Cement in
Hole

— 520 Stuck
8 1/2" Cone

7

— 640' Depth

Penetrated





SUBJECT _____

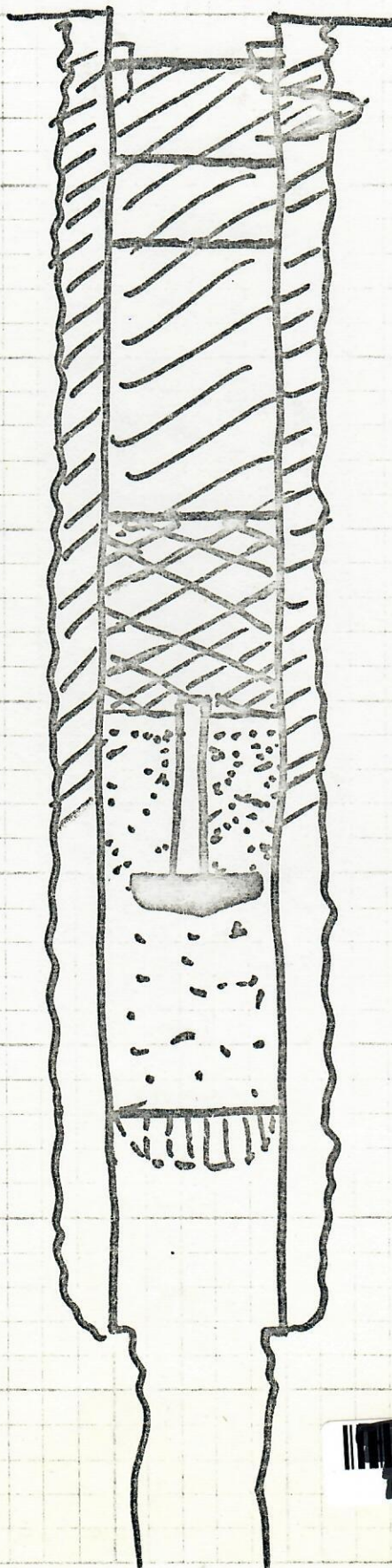
BY _____

DATE _____

SHEET NO. _____ OF _____

PROJECT NO. _____

MARLAND WELL 12/30/80 - 6:00 p
After Cementing



Cementing
- 32' 3d.
- 85' 2d.
- 136' 1st

- ?

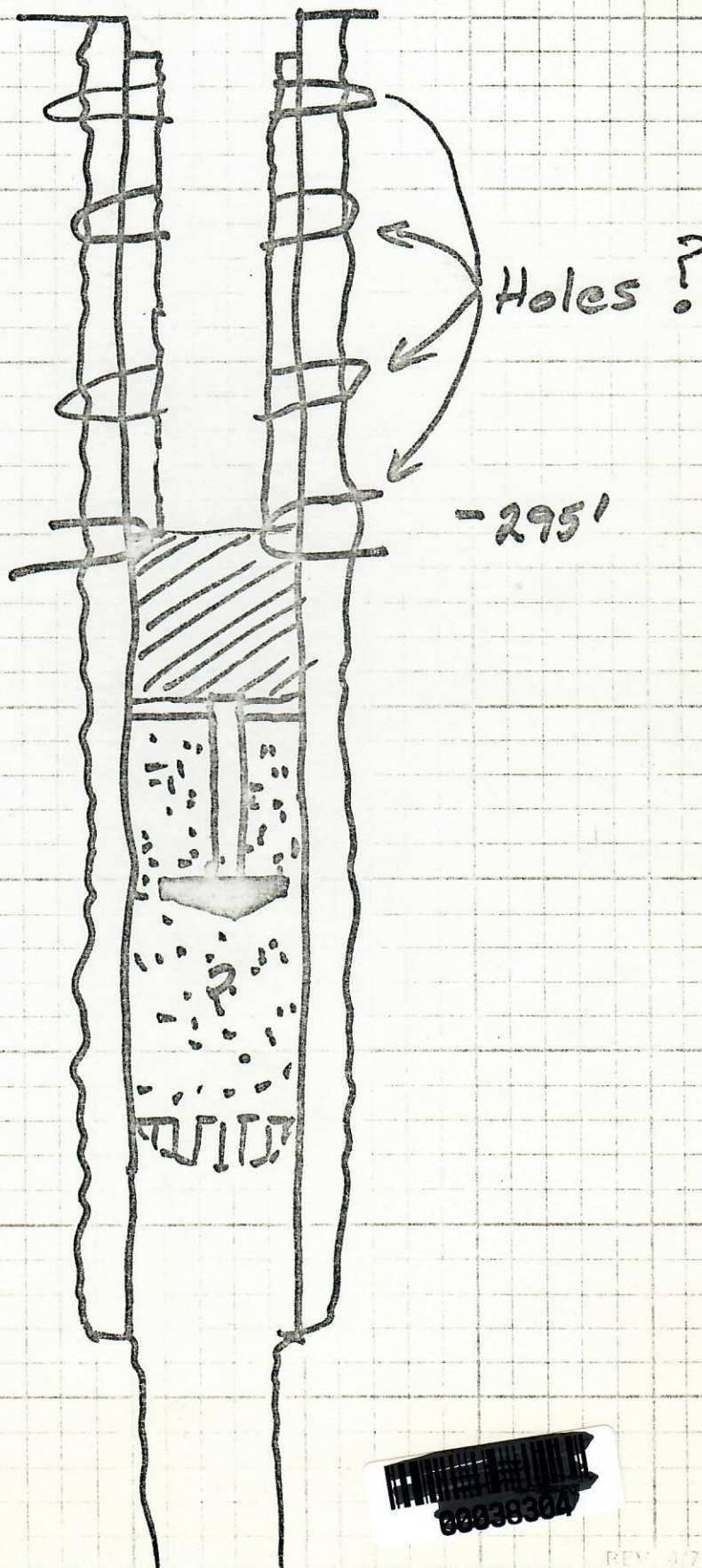
- 640' Wood Plug





SUBJECT _____ BY _____ DATE _____
SHEET NO. _____ OF _____
PROJECT NO. _____

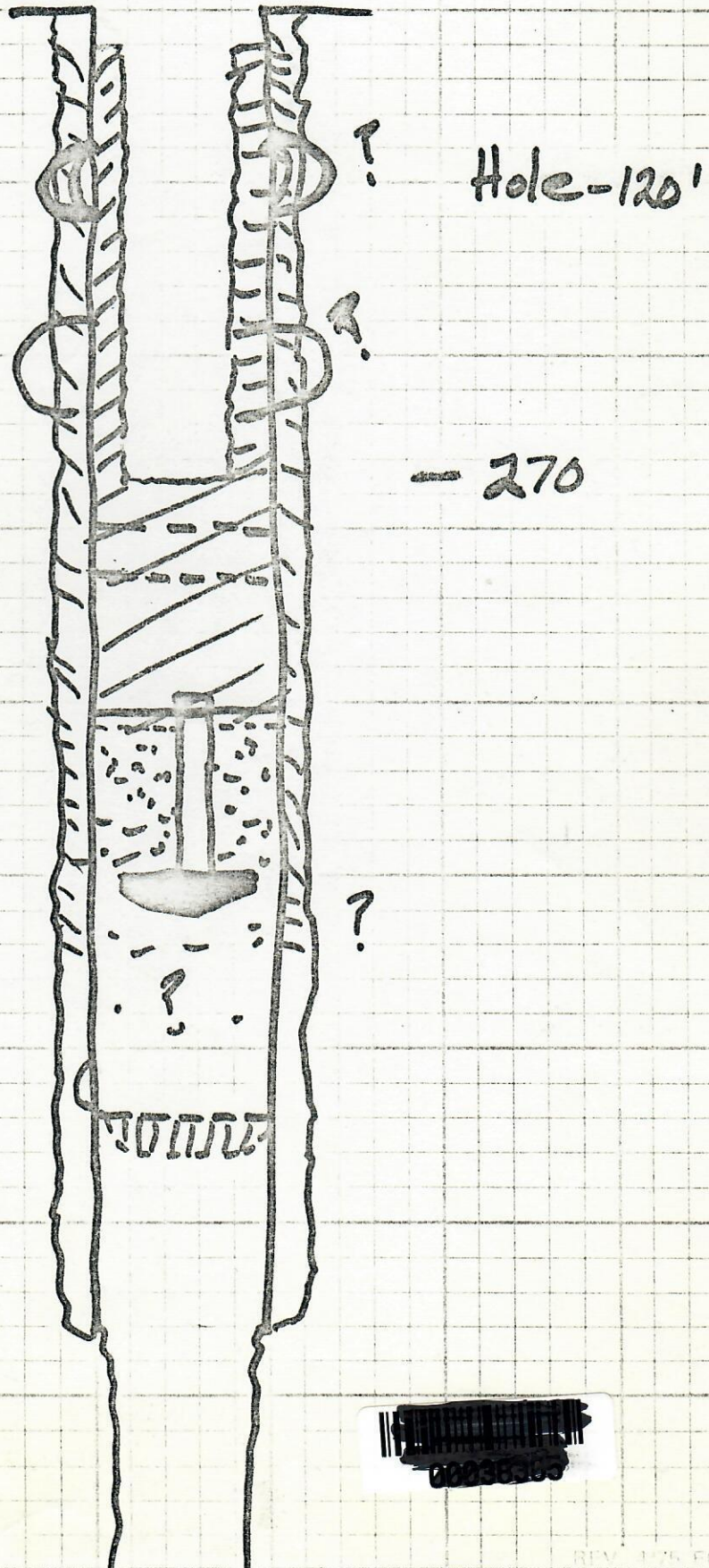
MARLAND WELL 12/29/80
PRIOR TO CEMENTING





SUBJECT _____ BY _____ DATE _____
SHEET NO. _____ OF _____
PROJECT NO. _____

MARLAND WELL 12/27/80 - 7:00 P.
Prior to Cementing





SUBJECT _____

BY _____

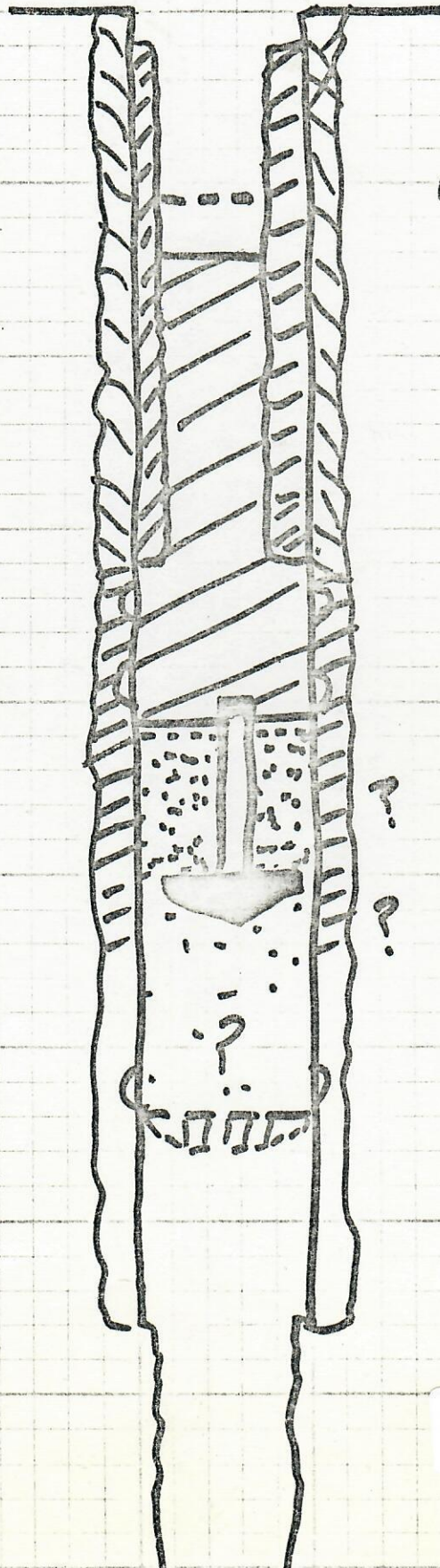
DATE _____

SHEET NO. _____

OF _____

PROJECT NO. _____

MARLAND WELL - 12/22/80 - 11:30 p.



W.L. - 120'

- 198' Top
Cement- 406 Top Pipe
- 425 Bottom
Cement

- 520'

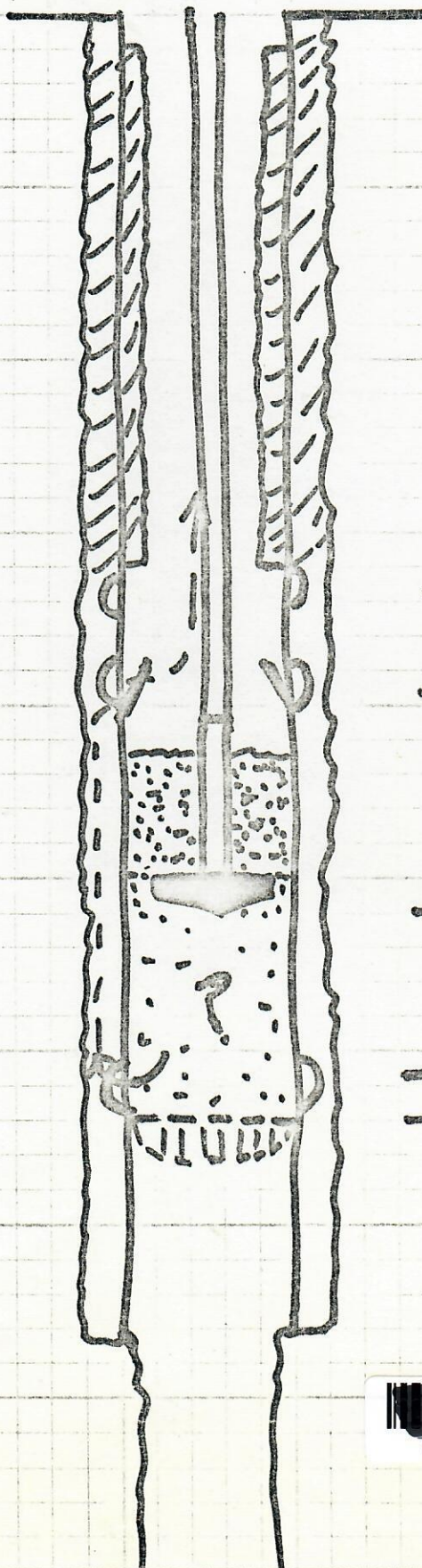
- 640'





SUBJECT _____ BY _____ DATE _____
SHEET NO. _____ OF _____
PROJECT NO. _____

MARLAND WELL - 12/21/80 - 5:00P.
PRIOR TO Plugging



- 320'
} Holes?
- 406'
- 435 ±'

- 520'

- Holes?
- 640'





SUBJECT _____

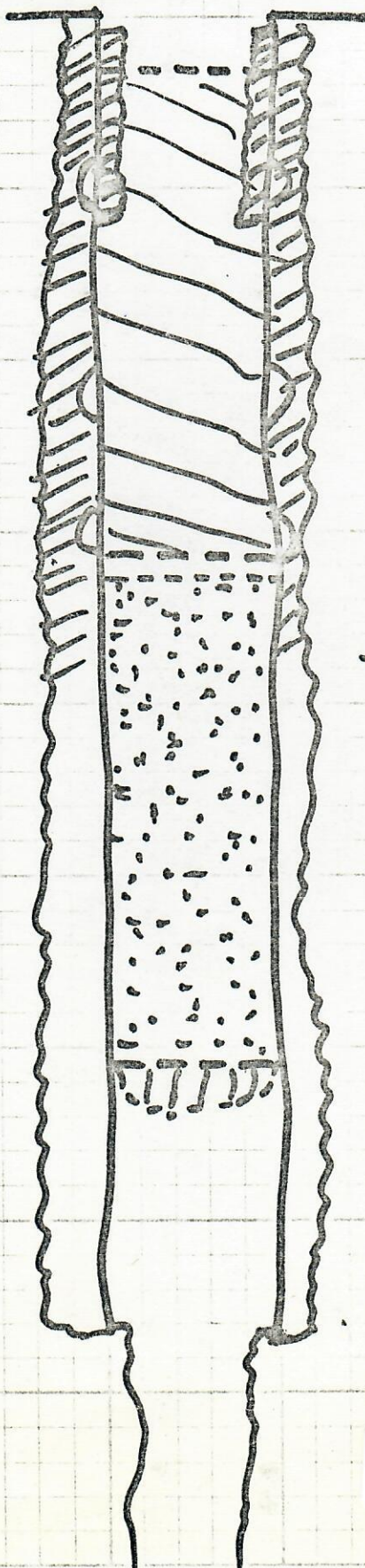
BY _____

DATE _____

SHEET NO. _____ OF _____

PROJECT NO. _____

MARLAND WELL - 12/18/80 - 6:30p.



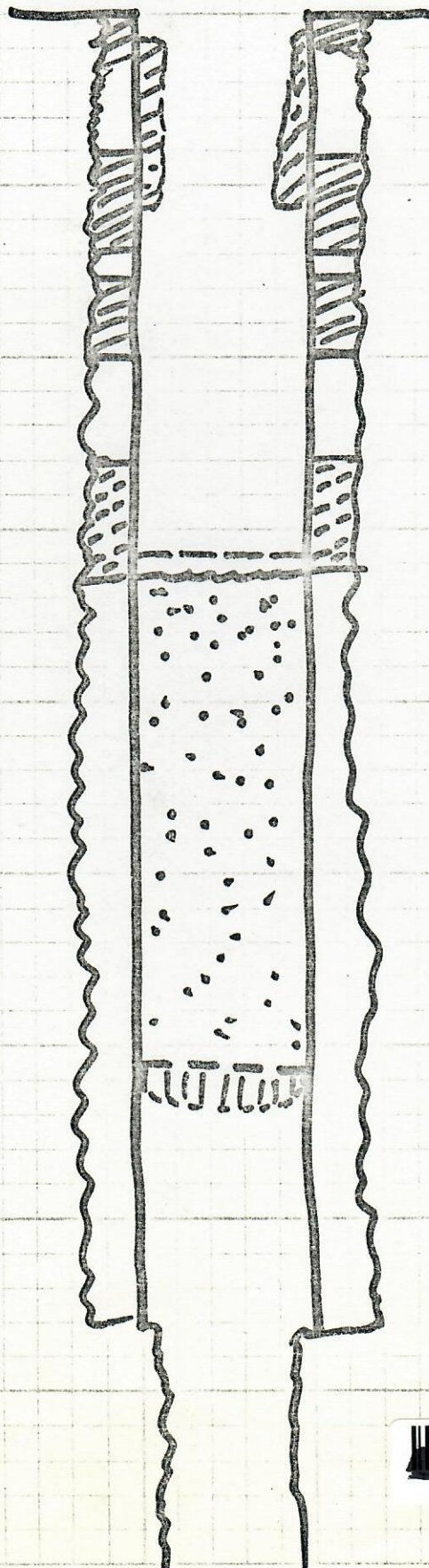
-30' Top Cement

-320, Bottom Cement
-323' TOP
-? Cement Down To?

-610 Pushed Plug To



MARLAND WELL - 12/18/80 - ~~12:00 a.m.~~ LOG RESULTS



- 20'

- 85'

- 140'

- 155'

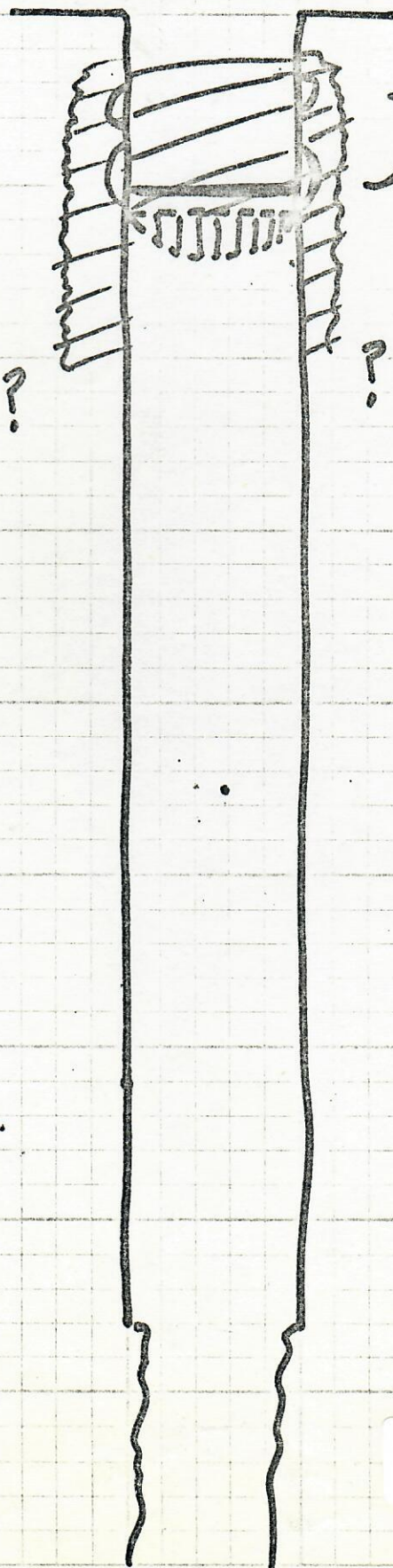
- 200'

- 260

- 323' Tagged
fill- 610' Pushed
Plug To.

MARLAND WELL - 12/14/80 - 5:00 P.

Cemented
100 sacks
30 bbl
Cement to
90'



} Holes?
- 119' Obstruction

00038310