



00052579

UNITED STATES
DEPARTMENT OF THE INTERIOR
GEOLOGICAL SURVEY

NOV 25 1975

APPLICATION FOR PERMIT TO DRILL, DEEPEN, OR PLUG BACK

1a. TYPE OF WORK

DRILL ☒DEEPEN ☐PLUG BACK ☐

b. TYPE OF WELL

OIL
WELL ☒GAS
WELL ☐

OTHER

SINGLE
ZONE ☐MULTIPLE
ZONE ☐

2. NAME OF OPERATOR

General Crude oil Company

3. ADDRESS OF OPERATOR

Ste. 1890 1600 Broadway Denver, Colorado 80202

4. LOCATION OF WELL (Report location clearly and in accordance with any State requirements.)*

At surface

SE, SE, NW Section 1 Twp. 1N Rge. 93 W 6 P.M.

2419' from west line & 2834' from south line of Section 1
At proposed prod. zone

Directional survey to be run if well is commercial.

14. DISTANCE IN MILES AND DIRECTION FROM NEAREST TOWN OR POST OFFICE*

8.5 miles from Meeker on Coal Creek road.

10. DISTANCE FROM PROPOSED*

LOCATION TO NEAREST

PROPERTY OR LEASE LINE, FT.

(Also to nearest drlg. unit line, if any)

105 Ft. North

16. NO. OF ACRES IN LEASE

1953.16

18. DISTANCE FROM PROPOSED LOCATION*

TO NEAREST WELL, DRILLING, COMPLETED,

OR APPLIED FOR, ON THIS LEASE, FT.

None

19. PROPOSED DEPTH

6300

17. NO. OF ACRES ASSIGNED
TO THIS WELL

40

20. ROTARY OR CABLE TOOLS

R

21. ELEVATIONS (Show whether DF, RT, GR, etc.)

Gr. 6805

22. APPROX. DATE WORK WILL START*

Jan. 7, 1976.

23.

PROPOSED CASING AND CEMENTING PROGRAM

SIZE OF HOLE	SIZE OF CASING	WEIGHT PER FOOT	SETTING DEPTH	QUANTITY OF CEMENT
13 3/4	9 5/8"	36#	650	450 sax
8 3/4	5 1/2	15.5#	6500	To be calculated from caliper log.

IN ABOVE SPACE DESCRIBE PROPOSED PROGRAM: If proposal is to deepen or plug back, give data on present productive zone and proposed new productive zone. If proposal is to drill or deepen directionally, give pertinent data on subsurface locations and measured and true vertical depths. Give blowout preventer program, if any.

24.

SIGNED

Robert A. Mills

TITLE

Chief Engineer

DATE

November 12, 1975.

(This space for Federal or State office use)

PERMIT NO.

APPROVAL DATE

APPROVED BY

TITLE

DATE

CONDITIONS OF APPROVAL, IF ANY:

*See Instructions On Reverse Side

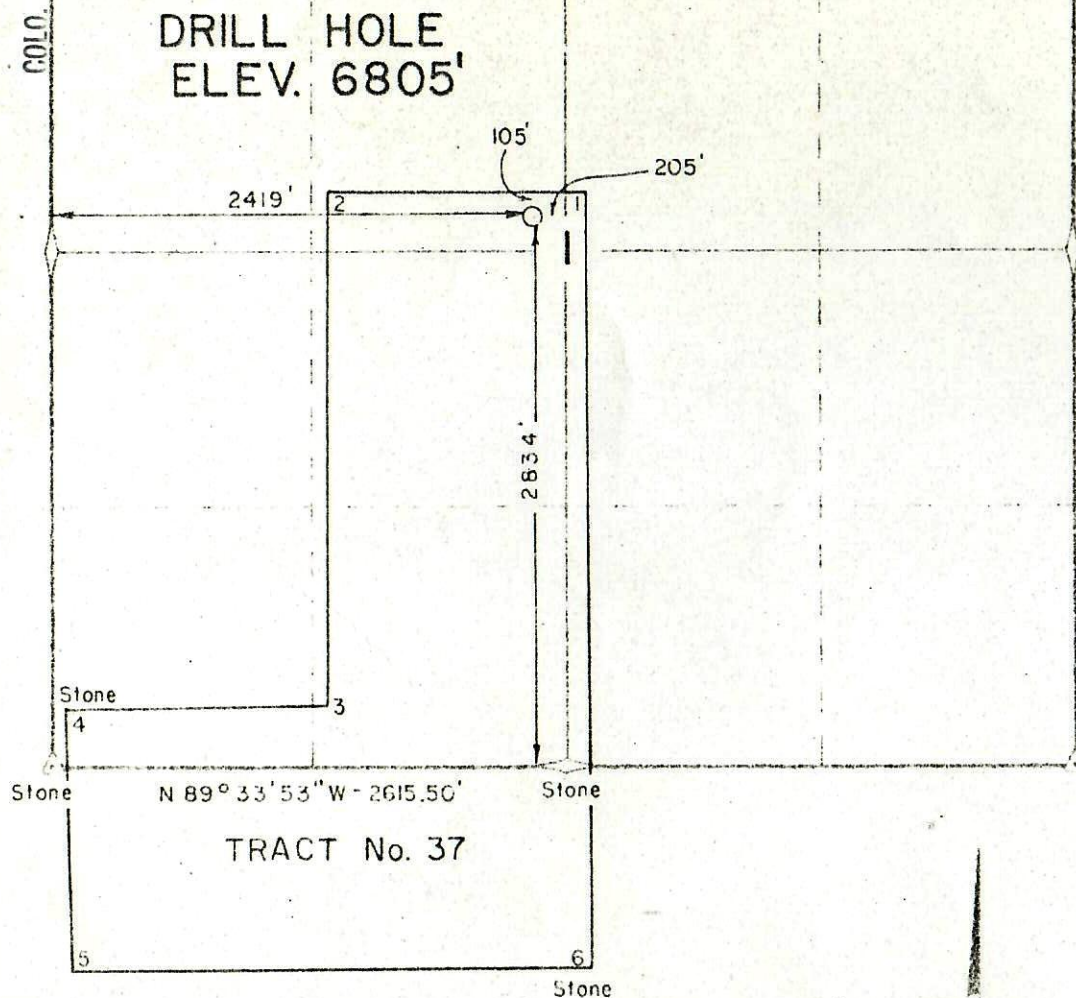
A.P.I. NUMBER

DVR	
FSP	
HHM	
JAM	<input checked="" type="checkbox"/>
JJD	
GCH	
CCM	

RECEIVED

NOV 25 1975

COLO. OIL & GAS CONS. COMM.



NOTE; ELEVATION BASE USGS BM 6797'
BEARING BASE ASSUMED
TRACT NO. 37 AS SHOWN HEREON
AS PER GLO PLAT

SCALE
1" = 1000'

N

CERTIFICATE OF SURVEY

I, JAMES W JOY, A REGISTERED
PROFESSIONAL LAND SURVEYOR IN THE
STATE OF COLORADO DO HEREBY CERTIFY
THAT A SURVEY OF;

DRILL HOLE IN SECTION 1, T1N,
R93W OF THE 6th. P.M. COUNTY OF
RIO BLANCO, STATE OF COLORADO,

WAS MADE SEPTEMBER 1975, UNDER MY
DIRECT SUPERVISION AND THAT THIS
PLAT IS A TRUE REPRESENTATION
THEREOF.

James W Joy
L.S. 12029
7

GCO FED RATTLESNAKE
6d-1

DRILL HOLE	
2834' N.S.L.	2419' E.W.L.
GENERAL CRUDE OIL COMPANY	
THE SURVEYORS	
878 - 5202	Box 705
MEEKER, COLO.	
81641	

G.C.O.
11-1-78

3013
CDMM.

20

1. The first step is to identify the problem or question that needs to be answered. This involves understanding the context and the specific requirements of the task.

1871

۱۰۰

0394

2-3-79

Q.C.O.

100

100

100

1000

7

100

100

1

100

100

١٢٠

.....

1000

11

1000

33

R92W

Map showing disposition
of mineral leases

RECEIVED

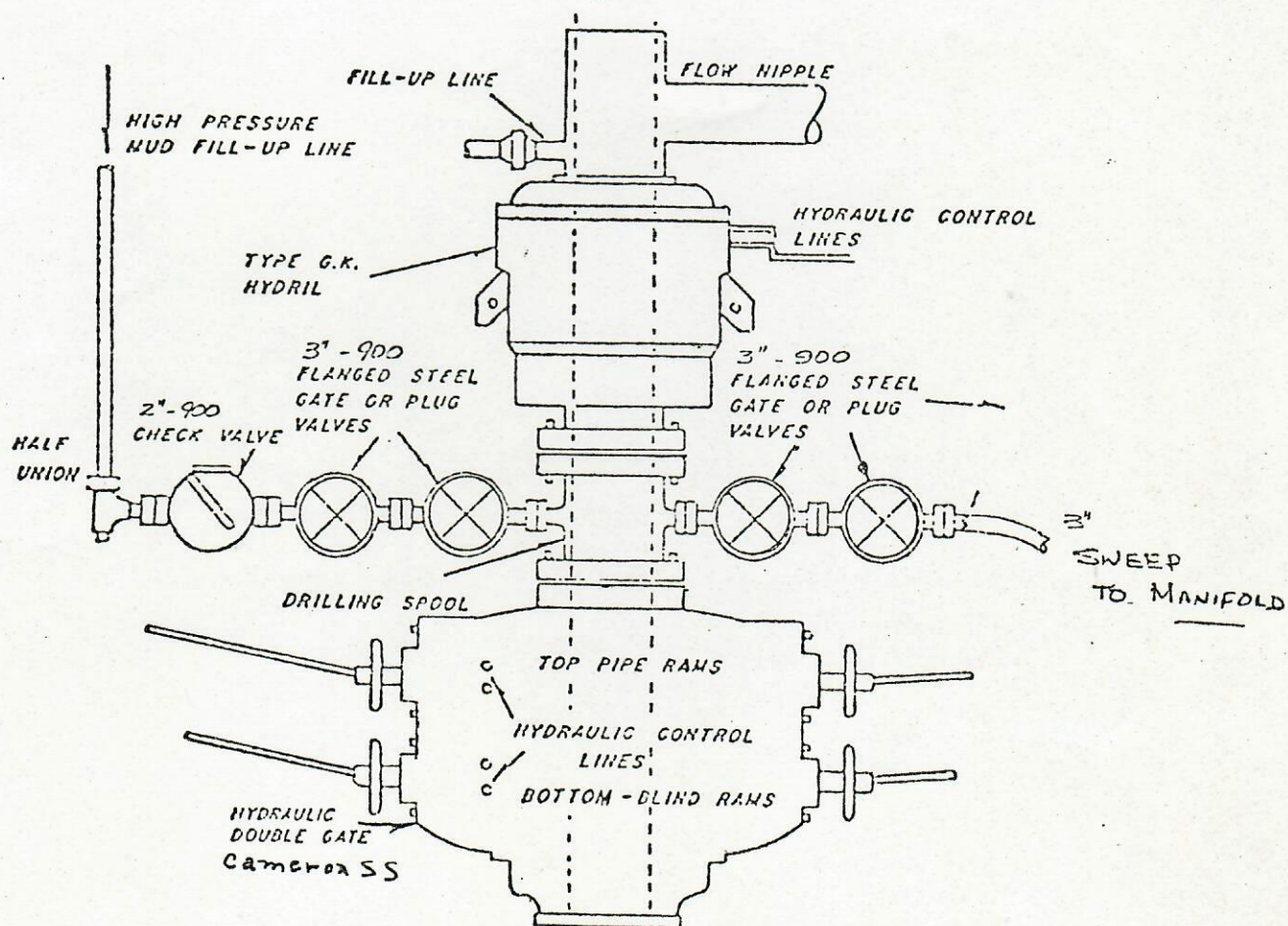
NOV 25 1975

COLO. OIL & GAS CONS. COMM.

WESTBURNE DRILLING INC.

Rig #57

12" - 900 BOP Stack

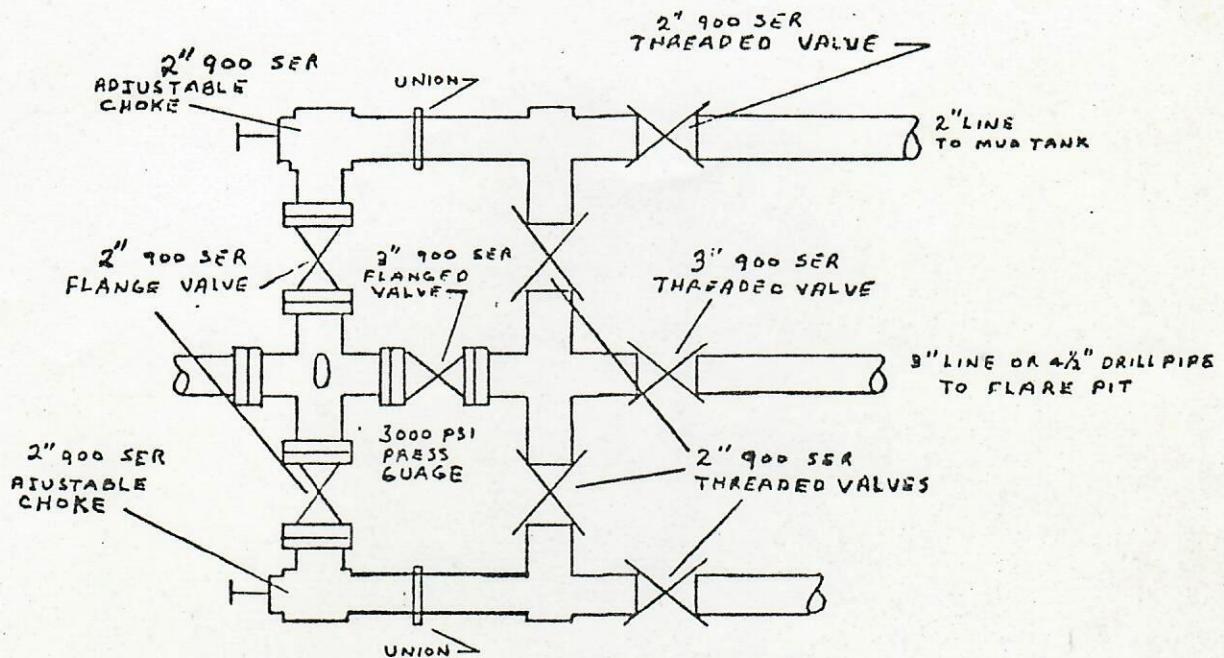




RECEIVED
NOV 25 1975
COLO. OIL & GAS CONS. COMM.

WESTBURNE DRILLING INC.
Rig #57
B.O.P. AND MANIFOLD

3.5'
3.8'
1.3'
2.5'



MANIFOLD ENCLOSED AND HEATED



12-Point Development Plan
GCO Rattlesnake 6d-1
SE SE NW-1-T1N-R93W
Rio Blanco Co., Colorado

RECEIVED
NOV 25 1975
COLO. OIL & GAS CONS. COMM.

1. The wellsite is beside the Yellowjacket road as shown on the attached map. Access will be provided by installing a culvert in the ditch and building an approach.
2. No access roads are needed.
3. There are no wells in a 2 mi. radius.
4. See above.
5. In the event of a discovery a tank battery would be built on the wellsite and the production trucked.
6. Water will be taken from the Coal Creek Mesa Ditch on the west side of the location.
7. All trash to be burned and buried in the flare pit. The mud will be dehydrated on the lease and buried in the sump.
8. No camp is planned.
9. No airstrip is planned.
10. The mud tanks and reserve pit will be on the east side of the location.
11. The topsoil will be stockpiled and redistributed on the surface for restoration. The land will be returned to its original contour and seeded with appropriate grasses to prevent erosion.
12. The topography is mountainous. The wellsite is on the only location which can be accessed at a reasonable cost and still suit our geological interpretation.

RECEIVED

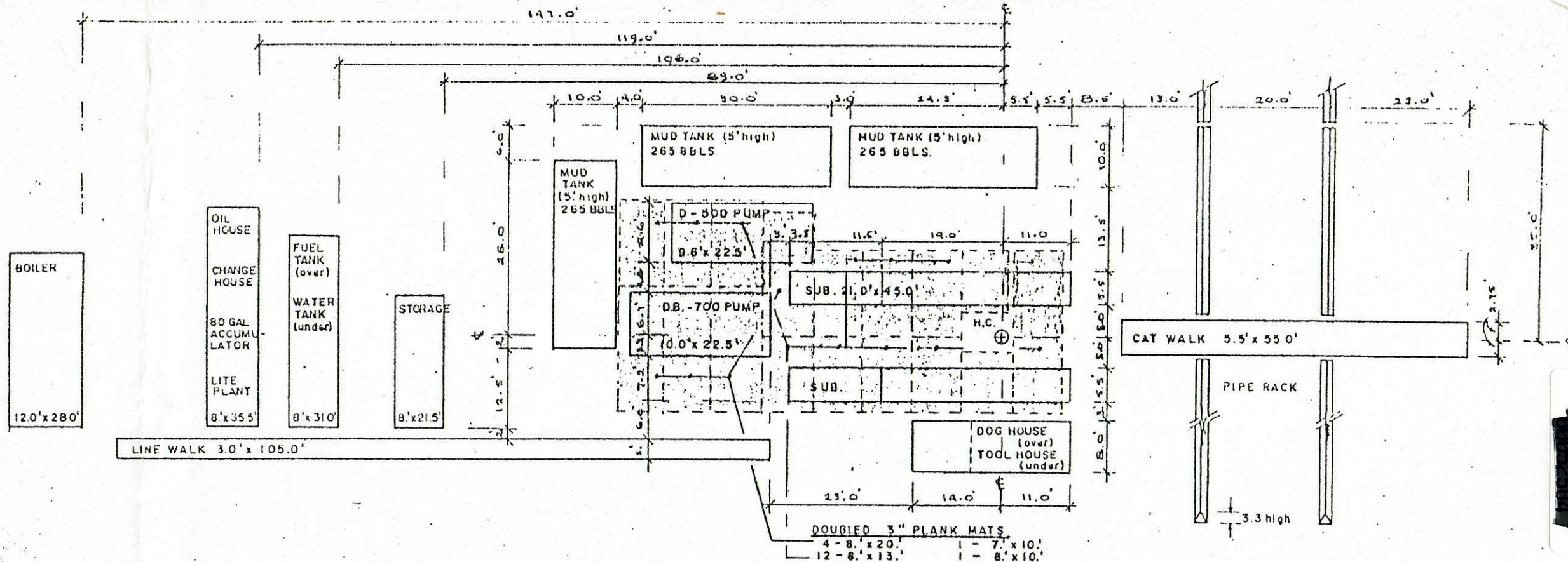
NOV 25 1975

COLO. OIL & GAS CONS. COMM.

7 Point Statement
GCO Federal Rattlesnake 6-d-1
SE SE NW-1-T1N-R93W
Rio Blanco County, Colorado

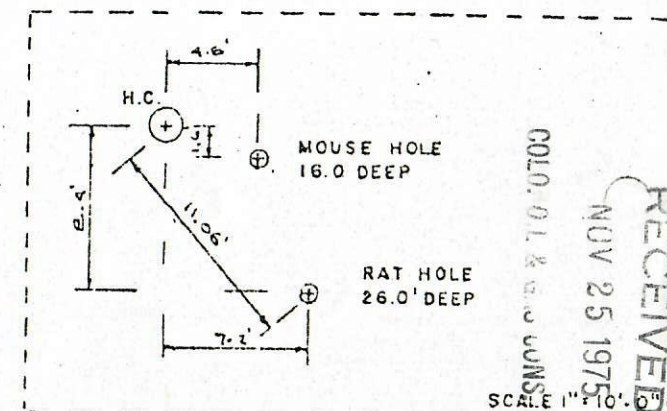
1. Run 9 5/8", 36#, K-55, new casing to 650 ft. K.B. and cement to surface with 450 sax normal portland cement + 3% CaCl_2 .
2. Weld on 10" x 9 5/8" flanged, 3000 psi W.P. casing bowl with 2", 900 series flanged valve on side outlet.
3. Seven inch intermediate casing may be run if incorrigible hole problems are encountered.
4. See attached diagram. Double gate ~~rams~~ with blind rams on top and pipe rams on bottom will be set on the surface casing bowl. A spool will be mounted on the rams if space permits and the flare line and kill line attached to the spool. A bag type preventer will be mounted on the spool. All B.O.P. equipment will be 10" flanged 3000 psi. W.P.
5. A Kelly cock will be used. A stabbing valve will be kept on the floor at all times; a float may be used at the contractors option. Valving and manifolding on kill and flare lines as shown on attached diagram.
6. The anticipated bottom hole pressure is approximately 2000 psi. The maximum should not exceed 3000 psi.
7. A gel-chemical mud will be used from the surface casing shoe to T.D. The solids and weight will be kept to a minimum to counter the lost circulation problems common to the area. Our research indicates that area problems of water flows and blowouts are caused by lost circulation. Other precautions to counter lost circulation will be:
 - I. Drill pipe must be tripped slower than 30 sec~~s~~. per stand.
 - II. Annular velocities will be less than 120 ft/min.
 - III. Bridges will not be spudded. Circulate and drill out obstructions.

The hole to be kept full and closely monitored at all times.



NOTES

- CROWN STAND TO CATWALK IS 59.0'
- OVER ALL LENGTH (CROWNSTAND TO BOILER) IS 292.0'
- OVER ALL WIDTH (MUD TANKS TO DOG HOUSE) IS 56.0'
- ALL LENGTH SHOWN INCLUDE SKIDS EXCEPT MUD TANKS
- FUEL TANK (5.0' ϕ x 26.0') CAPACITY 3090 IMP. GALS
- WATER TANK (30.0' x 80' x 8.0'h) CAPACITY 12 000 IMP. GALS OR 342 BBLS.
- STEP DOWN TYPE SUB STRUCTURE



RECEIVED
NOV 25 1975
SCALE 1" = 10'
COL. OIL & GAS CONSULTING

WESTBURNE DRILLING INC.		
Rig #57		Nat- 55
DATE AUGUST '74	SCALE 1" = 20' 0"	DRAWN BY: KAREL

