

**Emissions Monitoring Report
ECMC Orphaned Well Program**

Monitoring Site: **Calup #14 (OWP)**
 API #: 05-103-06392
 ECMC Location ID: 397258
 Well Status: Post-Plugging
 Lat 40.110956 Long -108.835905
 NWSW Sec 27 T2N R102W 6th PM, Rio Blanco, CO

Monitoring Result: **NON-DETECT**

Background:

Emissions monitoring was conducted at the Calup #14 (OWP). The well was drilled in 1965 to a depth of 2,500 feet. The well was plugged and abandoned (P&A) in June 2024.

Methodology:

Cottonwood was on-site to conduct the post-plugging emissions monitoring on June 18, 2024.

Cottonwood utilized a GEM™5000 Landfill Gas Meter to determine if methane emissions were present at the wellhead, flowlines, and associated production equipment (if present). Cottonwood utilized a photoionization detector (PID) to determine onsite concentrations of volatile organic compounds (VOCs). Where emissions were detected, the GEM™5000 Landfill Gas Meter was utilized to determine the approximate percent (%) of methane and other gases contained in the emissions. Cottonwood also utilized the GEM™5000 Landfill Gas Meter and PID to determine background conditions.

Other observations, including auditory, visual, and olfactory observations were also noted. Observations regarding vegetation and general site conditions were recorded in a field notebook.

Results:

No methane emissions were detected the Calup #14 (OWP) P&A wellhead.

A summary of the emissions monitoring is included on the following data sheet. Results of the emissions monitoring are shown on Figure 1 and photographic documentation of site conditions during the monitoring is included as Attachment 1.

Conclusion

Based on results of the emissions monitoring, no methane emissions were detected from the Calup #14 (OWP) P&A wellhead.



**Emissions Monitoring Data Sheet
ECMC Orphaned Well Program**

Well Name: Calup #14 (OWP)
API #: 05-103-06392

Date: 6/18/2024
Monitoring Specialist: DS

Meteorological Conditions

Temperature: 80 °F
Barometric Pressure: 24.78 inHg
Relative Humidity: 10 %
Wind Speed and Direction: 5-10 mph SW

Monitoring Results

| | | | |
|----------------------------|------------------------------------|-----|-----|
| Background Conditions | Methane: | 0.0 | % |
| | Carbon Dioxide (CO2): | 0.3 | % |
| | Hydrogen Sulfide (H2S): | 0.0 | ppm |
| | Volatile Organic Compounds (VOCs): | 0.0 | ppm |
| P&A Wellhead Conditions | Methane: | 0.0 | % |
| | Carbon Dioxide (CO2): | 0.2 | % |
| | Hydrogen Sulfide (H2S): | 0.0 | ppm |
| | Volatile Organic Compounds (VOCs): | 2.1 | ppm |

Equipment Used:

| | | |
|----------|-----|--|
| GEM 5000 | PID | |
| | | |

Notes:

No methane detected, no surface water was observed and vegetation was consistent with seasonal and surrounding conditions within the vicinity of the well pad.

Calup #14 (OWP)

Post-Plugging Methane Assessment

Legend

- Calup #14 (OWP)
- No Methane Detected

Calup #14 (OWP)
No Methane Detected

Google Earth

Image © 2024 Airbus

50 ft



Notes: Post-plugging methane assessment conducted 6/18/24. No methane detected.



Mapping by: D. Songer
Date: 6/21/2024

Figure 1
Calup #14 (OWP)
Post-plugging Methane Assessment
Colorado Energy & Carbon
Management Commission

Calup #14 (OWP)

Photographic Log

Colorado Energy & Carbon Management Commission



Photo 1: Calup #14 (OWP) P&A wellhead, no methane detected, view from above.

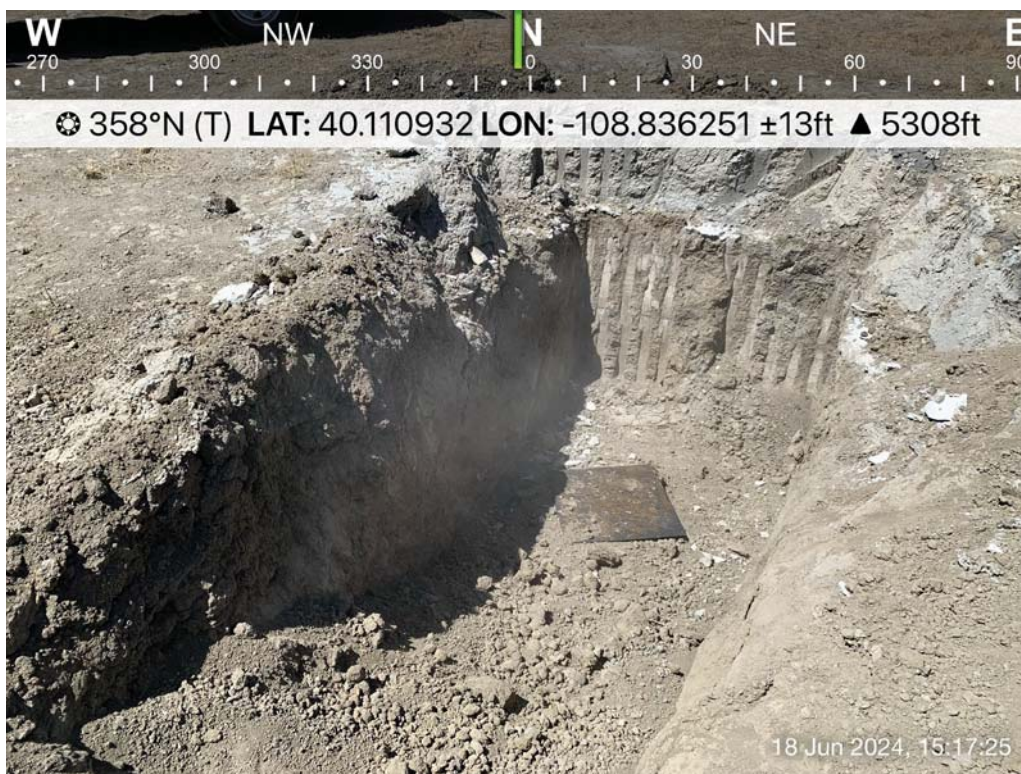


Photo 2: Calup #14 (OWP) P&A wellhead, no methane detected, view north.

Calup #14 (OWP)
Photographic Log
Colorado Energy & Carbon Management Commission

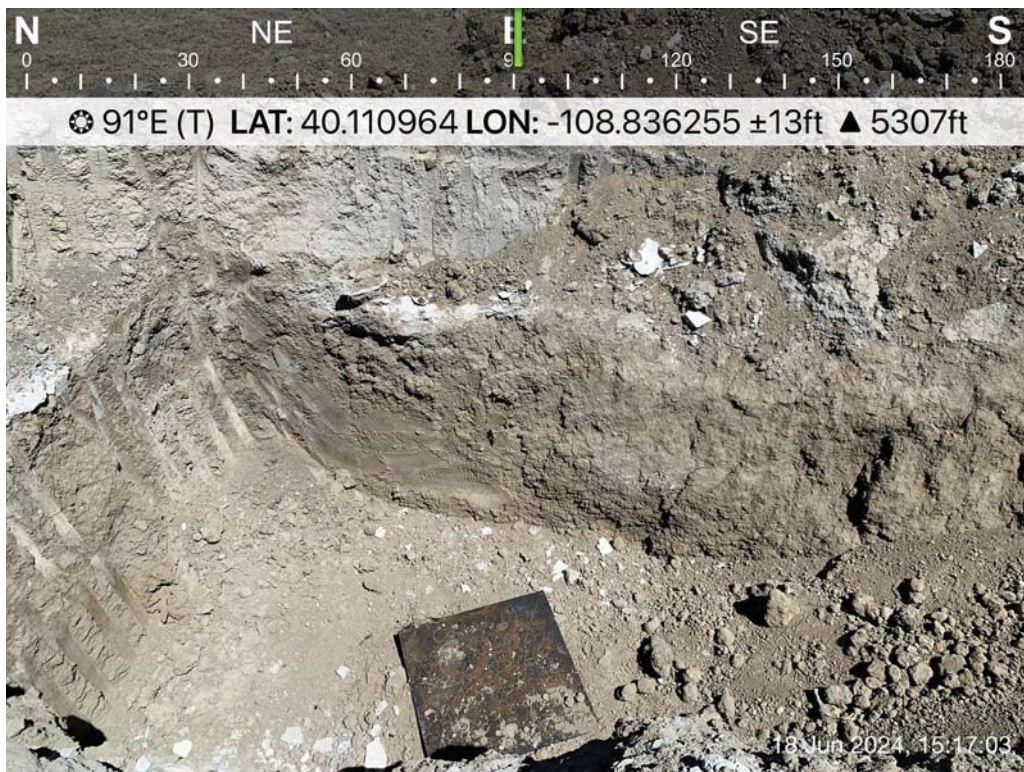


Photo 3: Calup #14 (OWP) P&A wellhead, no methane detected, view east.



Photo 4: Calup #14 (OWP) P&A wellhead, no methane detected, view south.

Calup #14 (OWP)
Photographic Log
Colorado Energy & Carbon Management Commission



Photo 5: Calup #14 (OWP) P&A wellhead, no methane detected, view west.