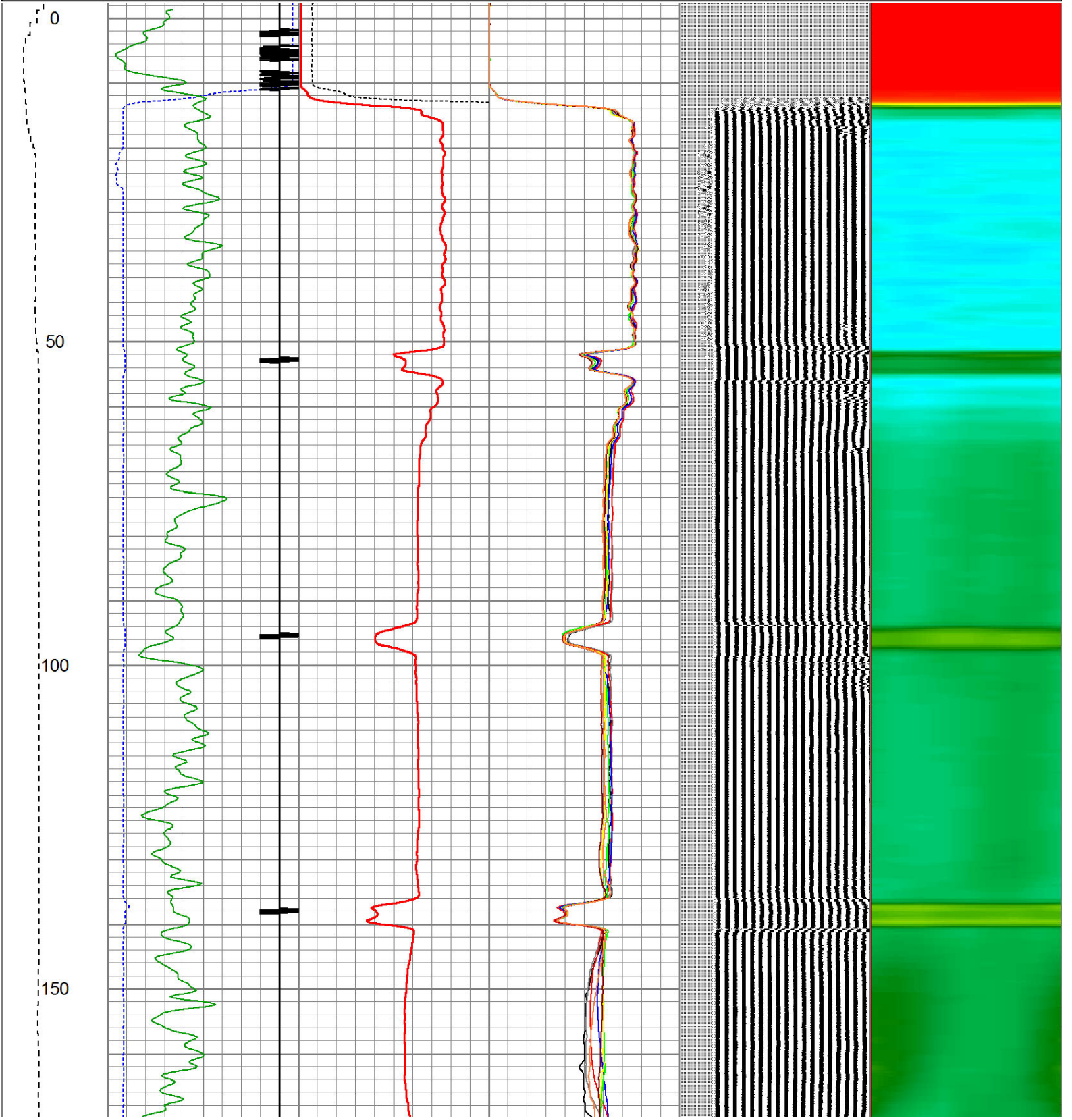


				CENT-Probe (PTS_MONO)	2.88	2.75	35.00
HEADVOLT	16.13						
IntTemp	14.72						
				RBT-Probe (Base) Probe Radii Bond Tool with Digital Telemetry	9.39	2.75	90.00
WVF3FT	11.47						
WVFCAL	11.47						
WVFS1	11.47						
WVFS2	11.47						
WVFS3	11.47						
WVFS4	11.47						
WVFS5	11.47						
WVFS6	11.47						
WVFS7	11.47						
WVFS8	11.47						
WVF5FT	10.47						
				CENT-Probe (PT_MONO2)	2.88	2.75	35.00
CCL	3.64						
				GR-Probe (275) Probe 2.75"	4.33	2.75	30.00
GR	0.90						

Dataset: guttersen state usx d21-27d.db: field/well/run1/pass3
 Total Length: 20.49 ft
 Total Weight: 191.00 lb
 O.D.: 2.75 in

Database File: guttersen state usx d21-27d.db
 Dataset Pathname: pass3
 Presentation Format: ips_rbt

LSPD	200	TT (usec)	1000	0	AMP (mV)	100	0	AMPS1	100	200	VDL	1200	1	Cement Map	8
(ft/min)	-9	CCL	1	0	AMPx5 (mV)	20	0	AMPS2	100				1		100
0	250	GR (GAPI)	150					AMPS3	100						
		GR (GAPI)	400					AMPS4	100						
								AMPS5	100						
								AMPS6	100						
								AMPS7	100						
								AMPS8	100						

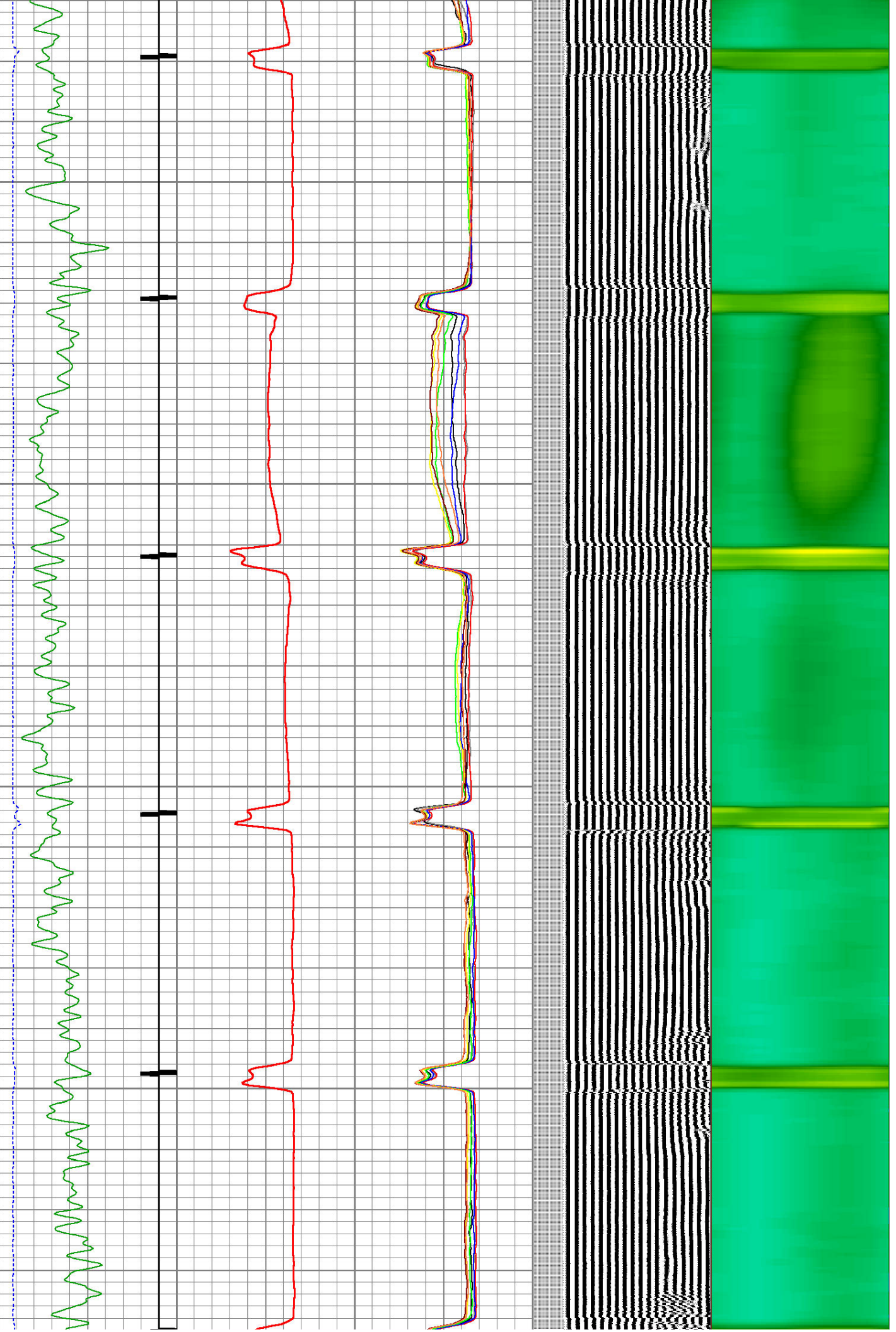


200

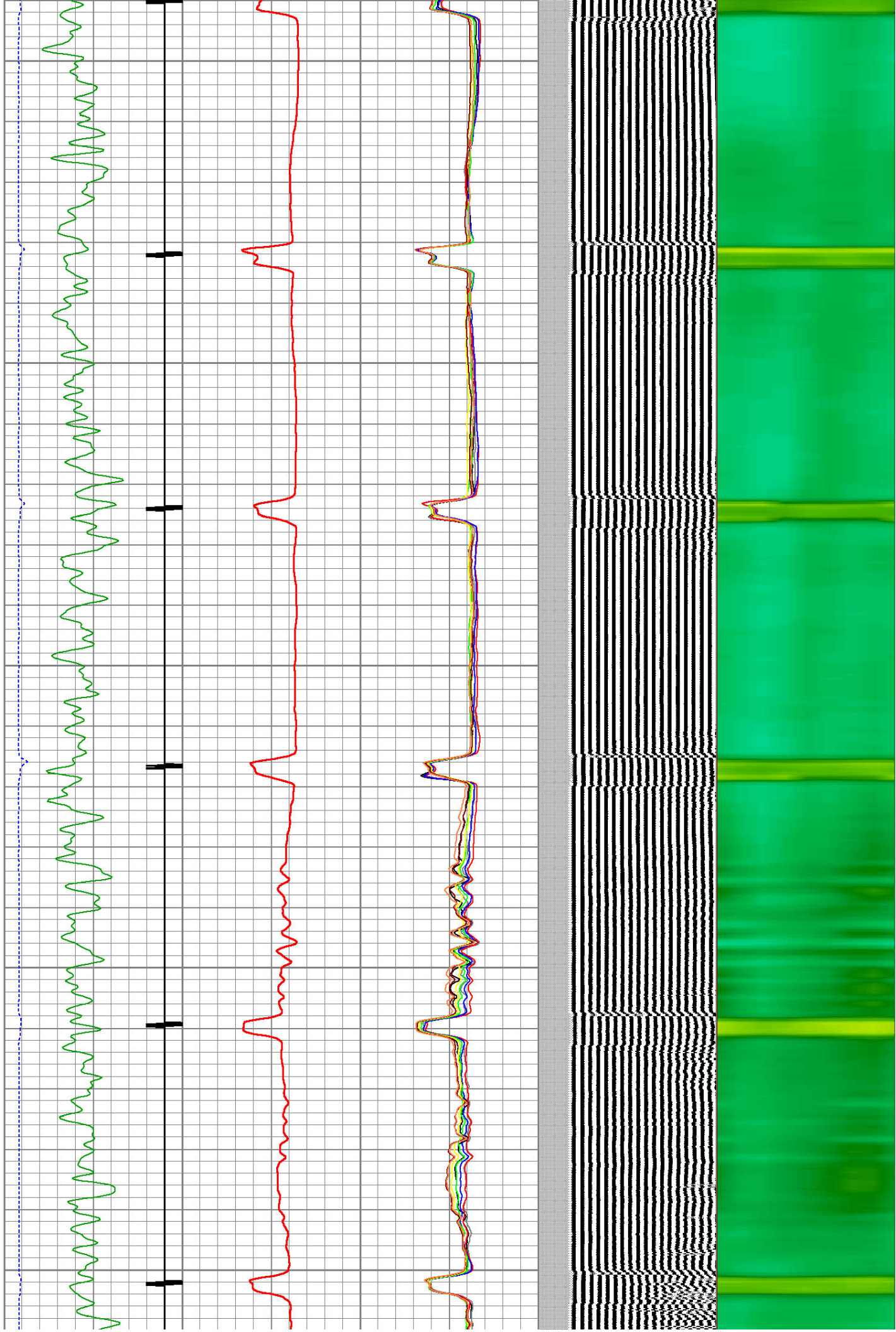
250

300

350



400
450
500
550
600

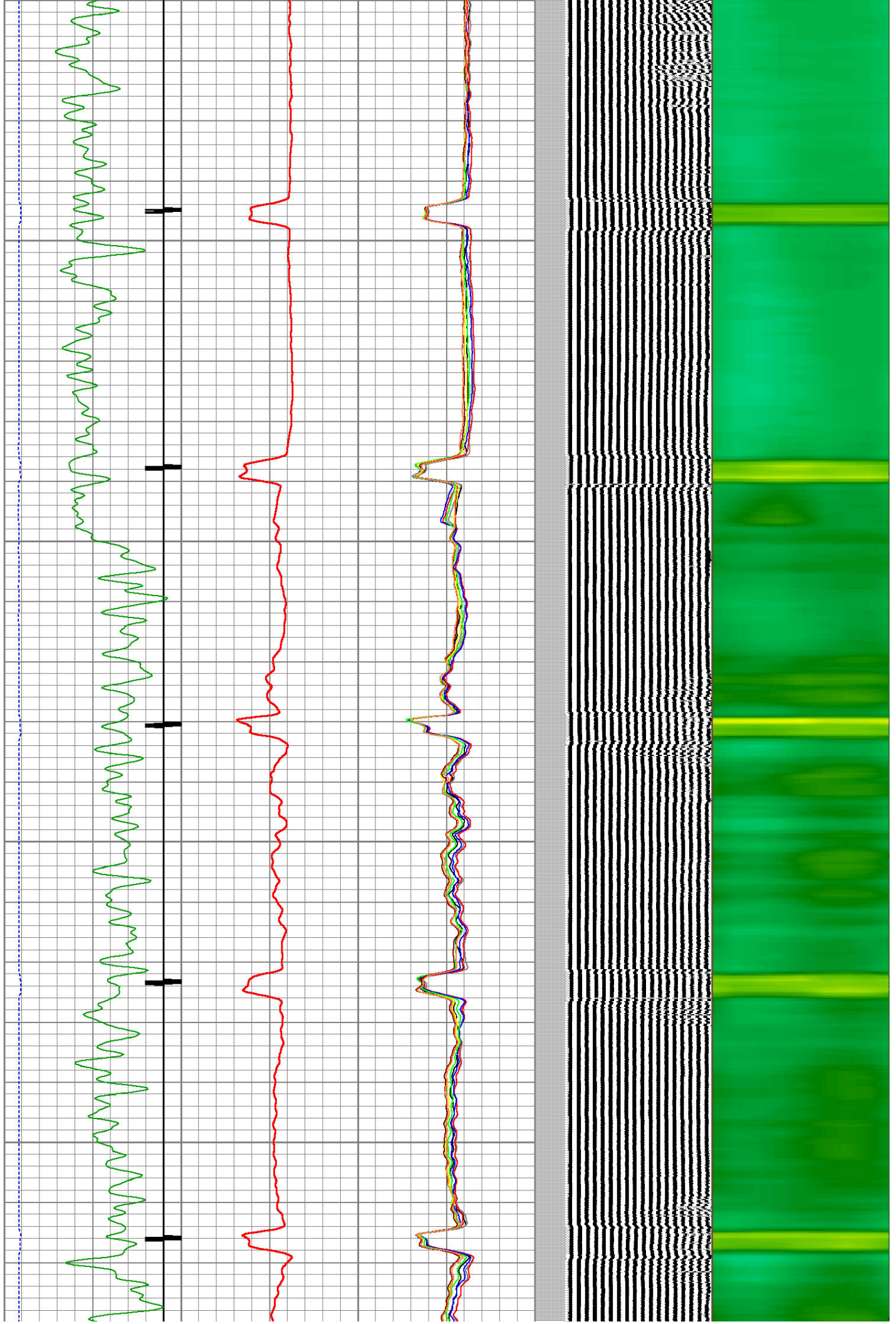


650

700

750

800



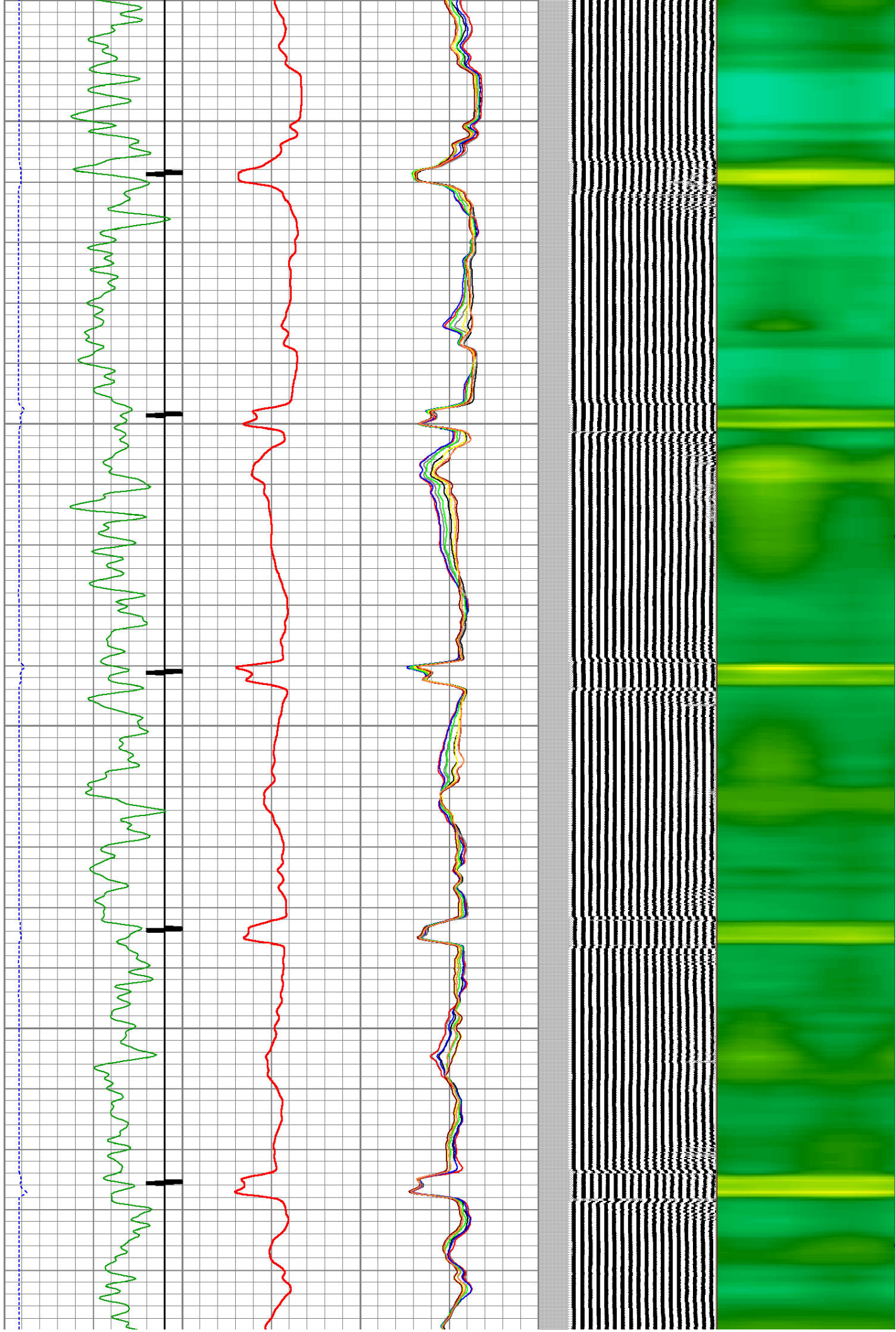
850

900

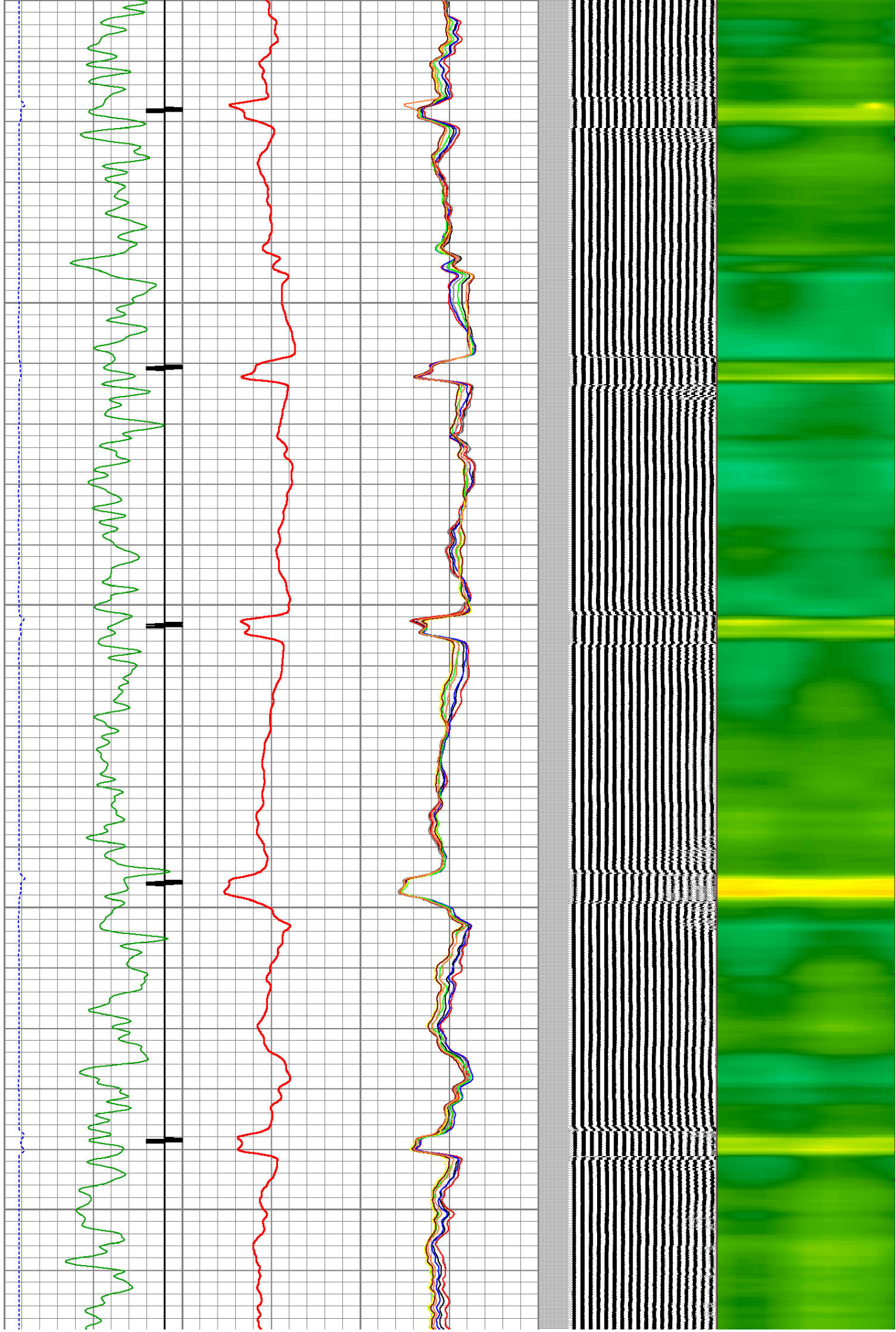
950

1000

1050



1050
1100
1150
1200
1250

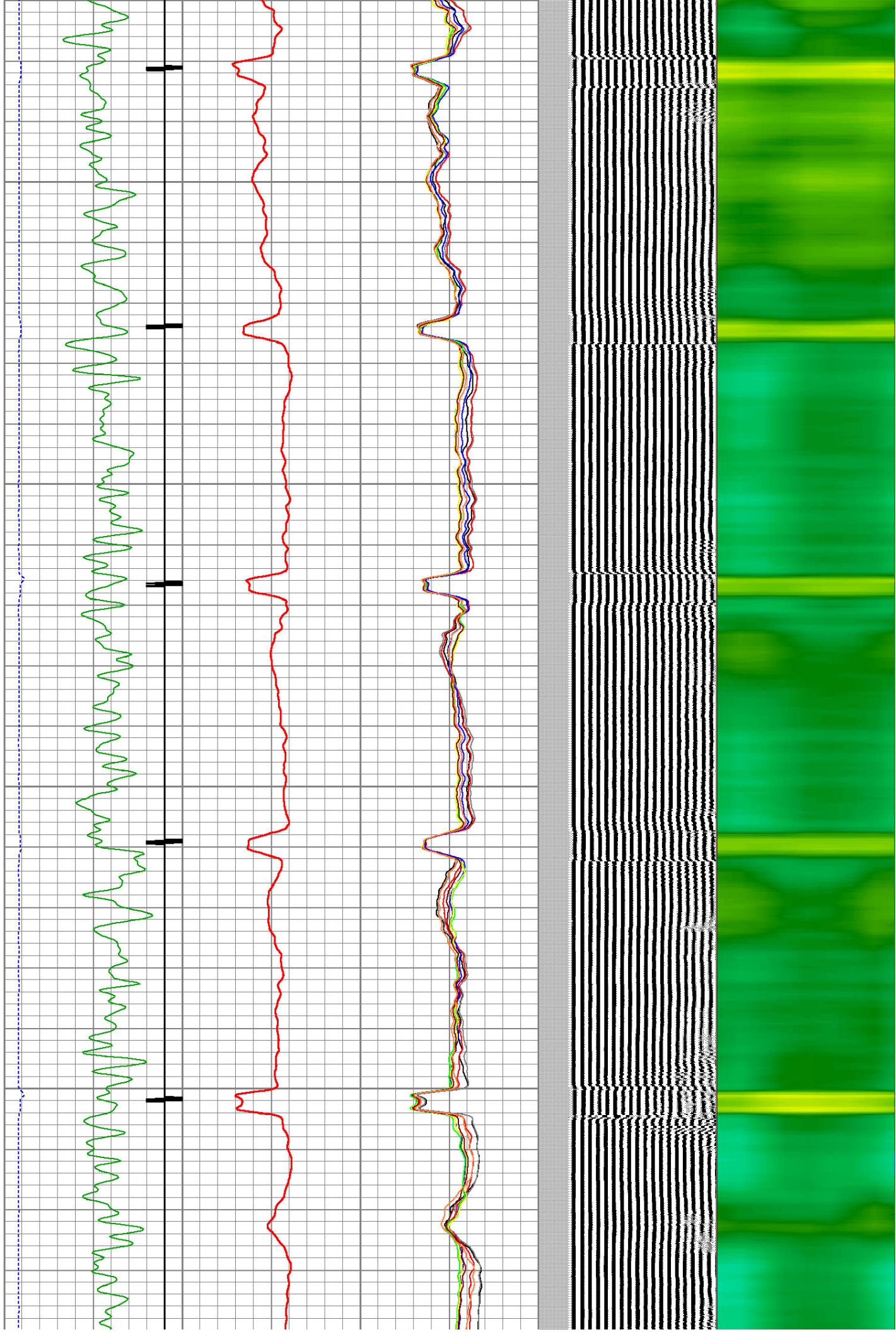


1300

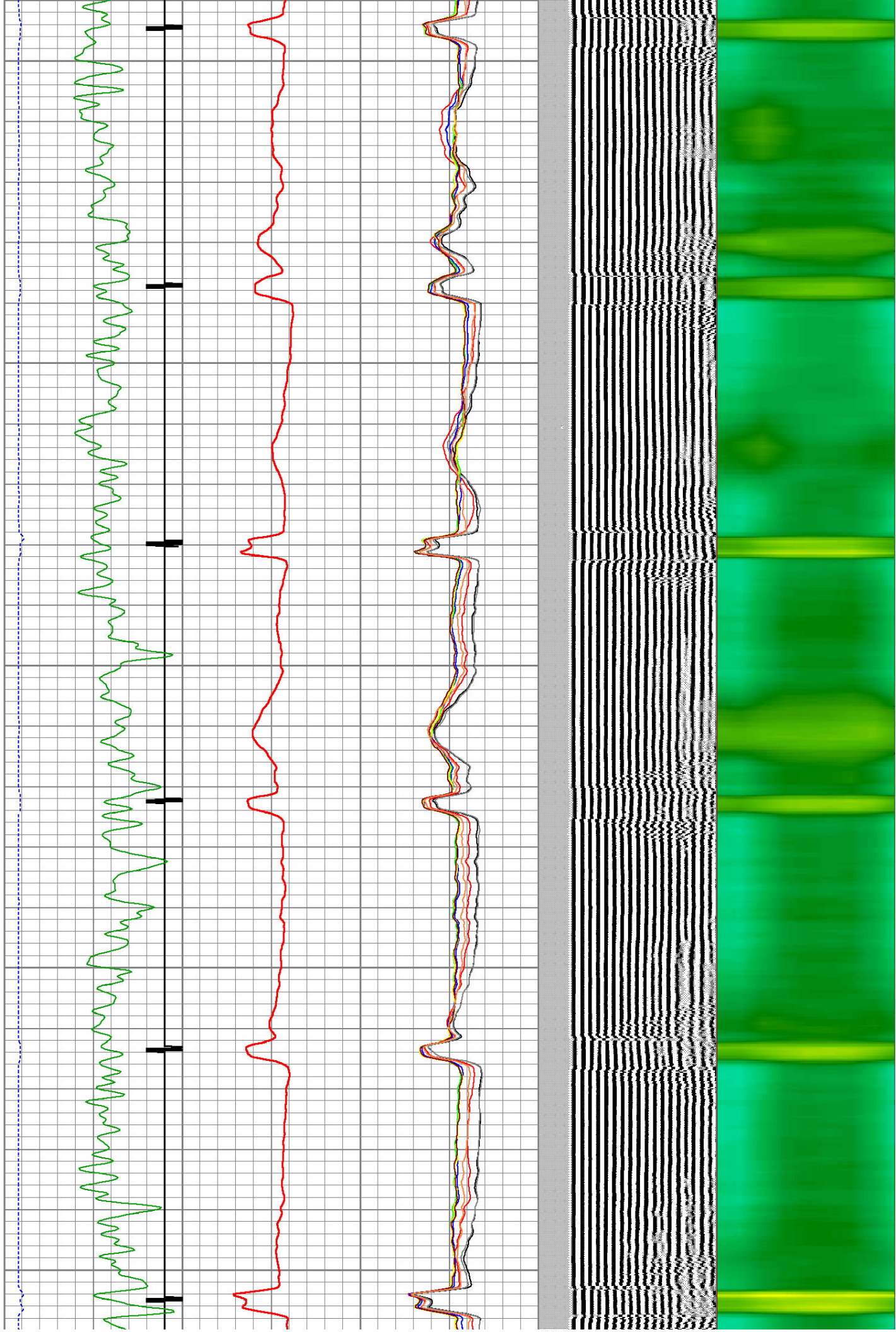
1350

1400

1450



1500
1550
1600
1650
1700

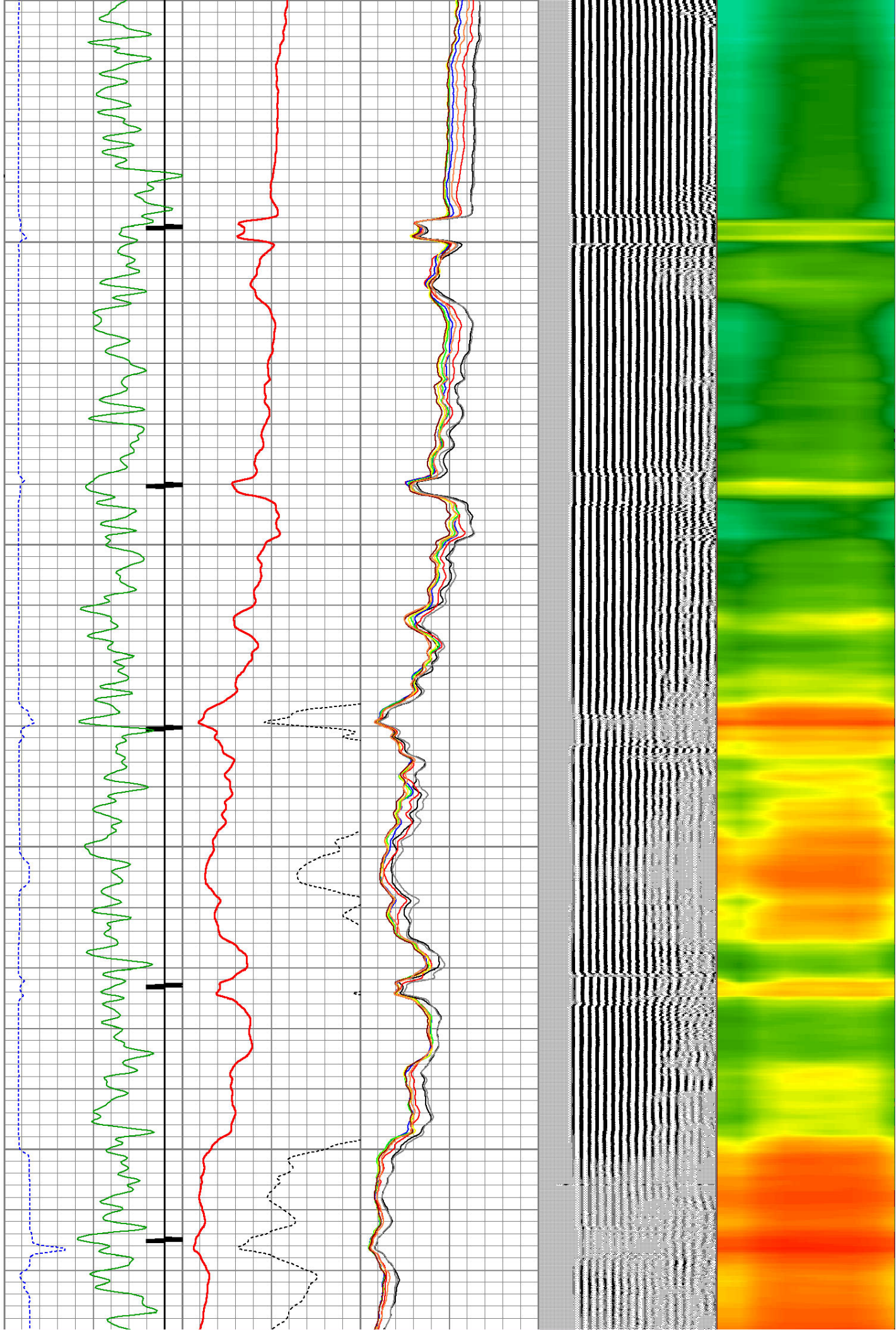


1750

1800

1850

1900



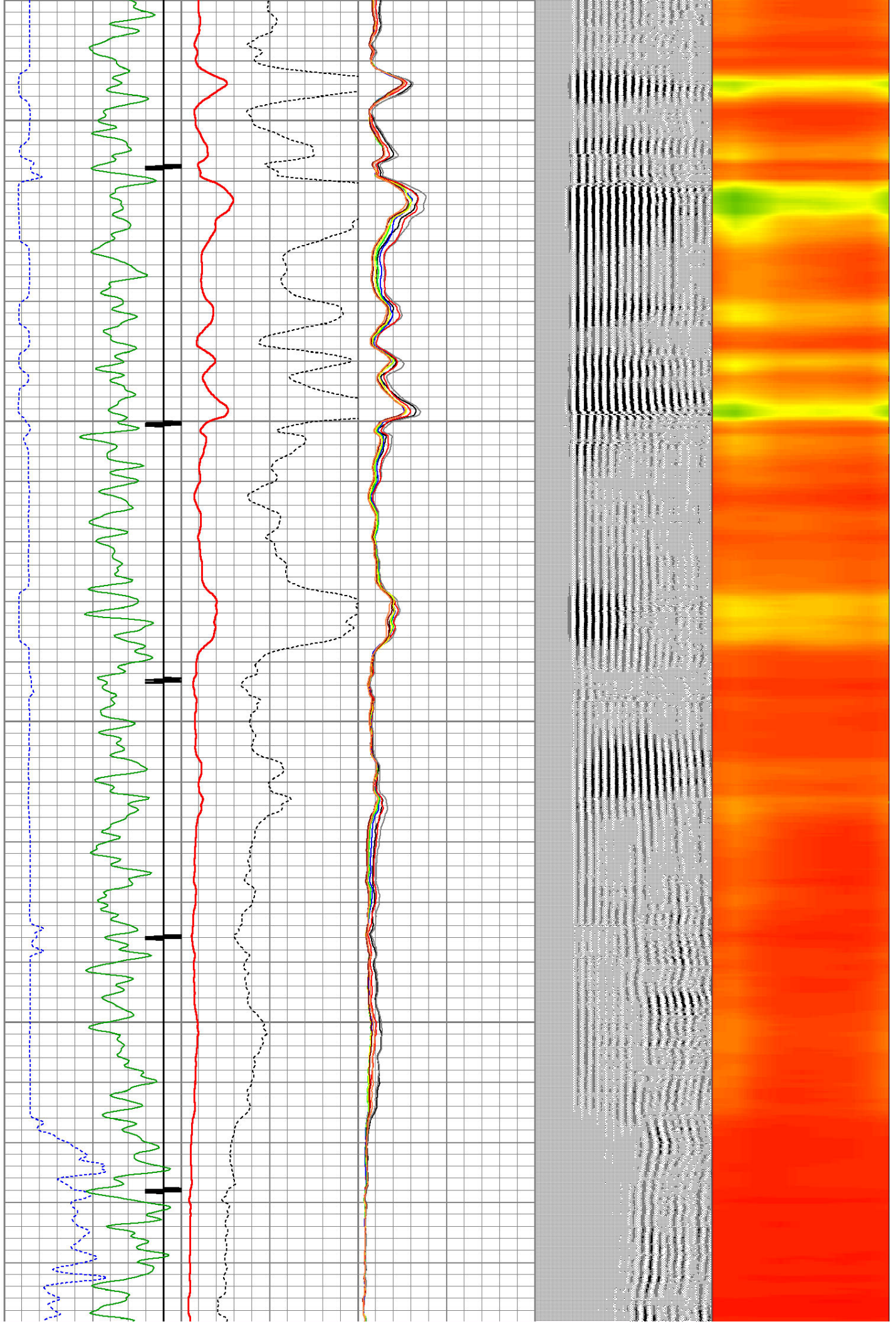
1950

2000

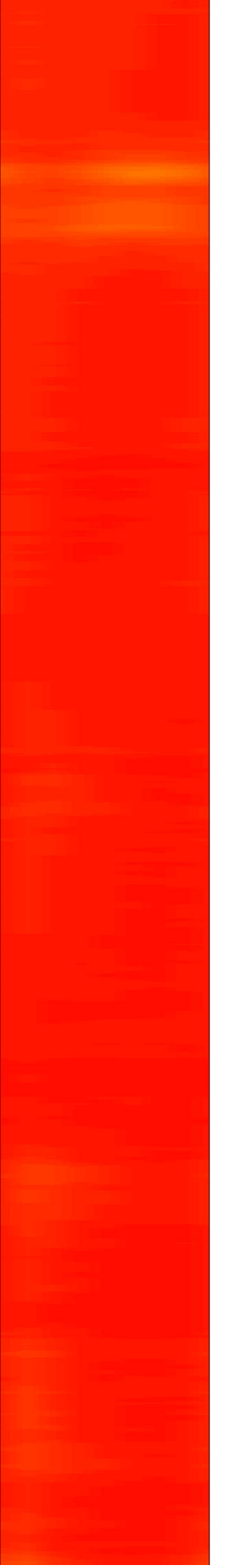
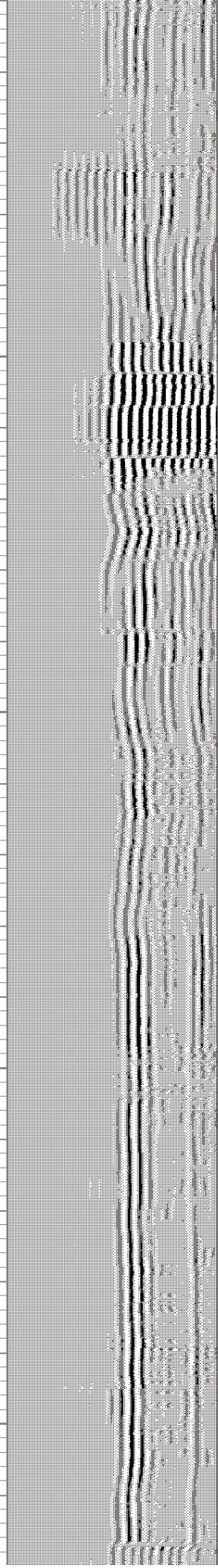
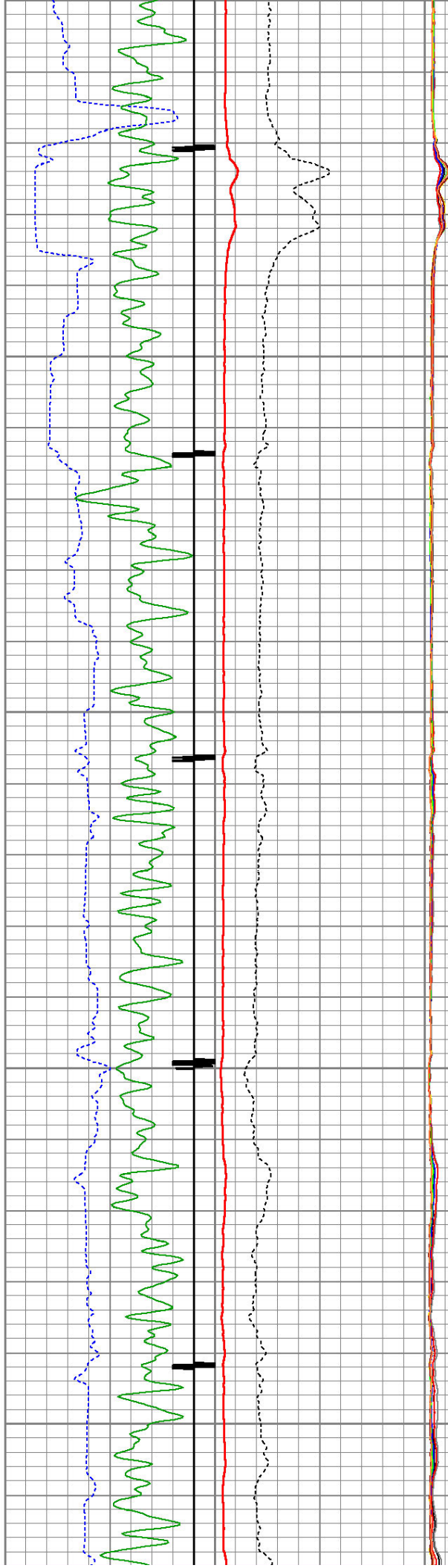
2050

2100

2150



2150
2200
2250
2300
2350

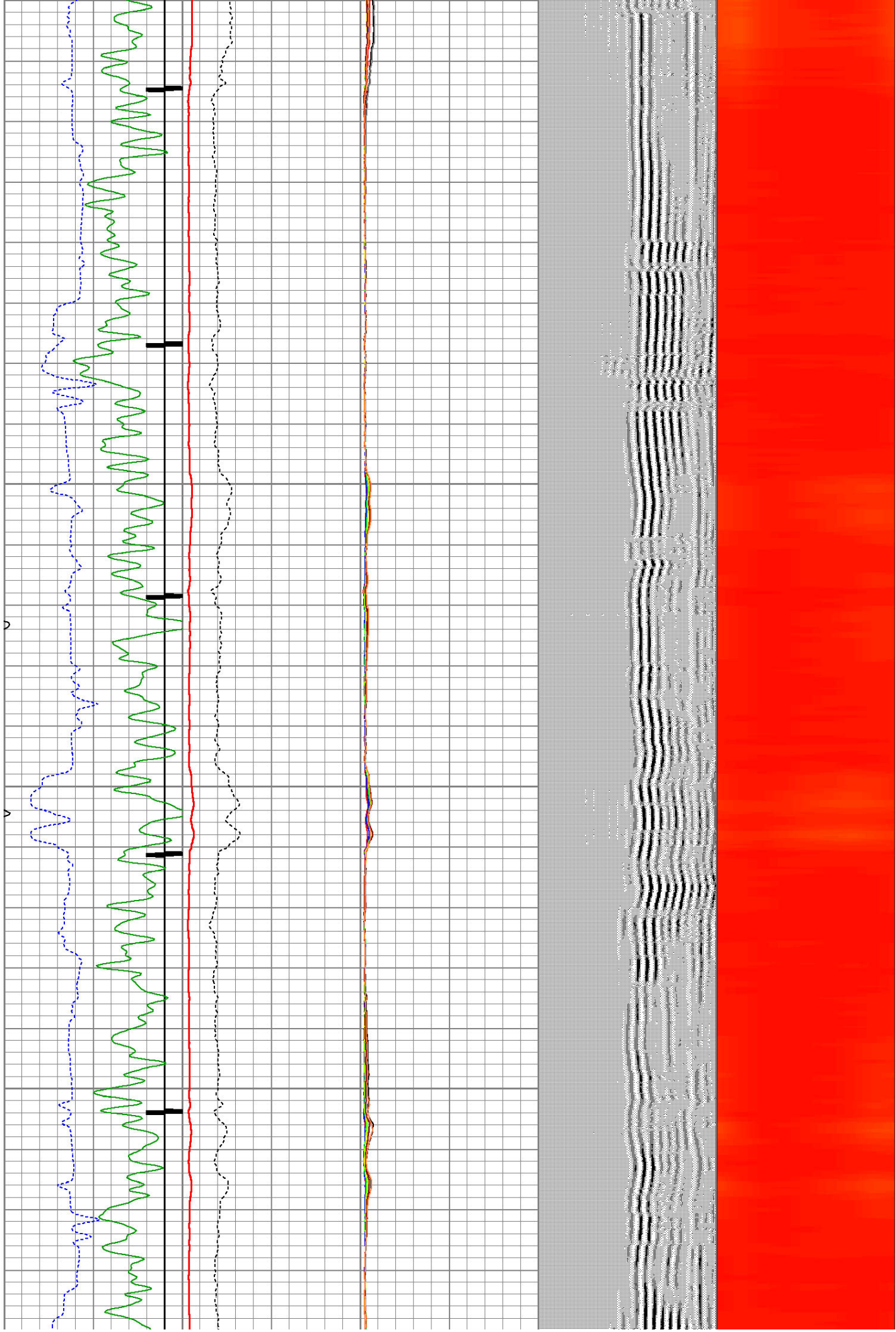


2400

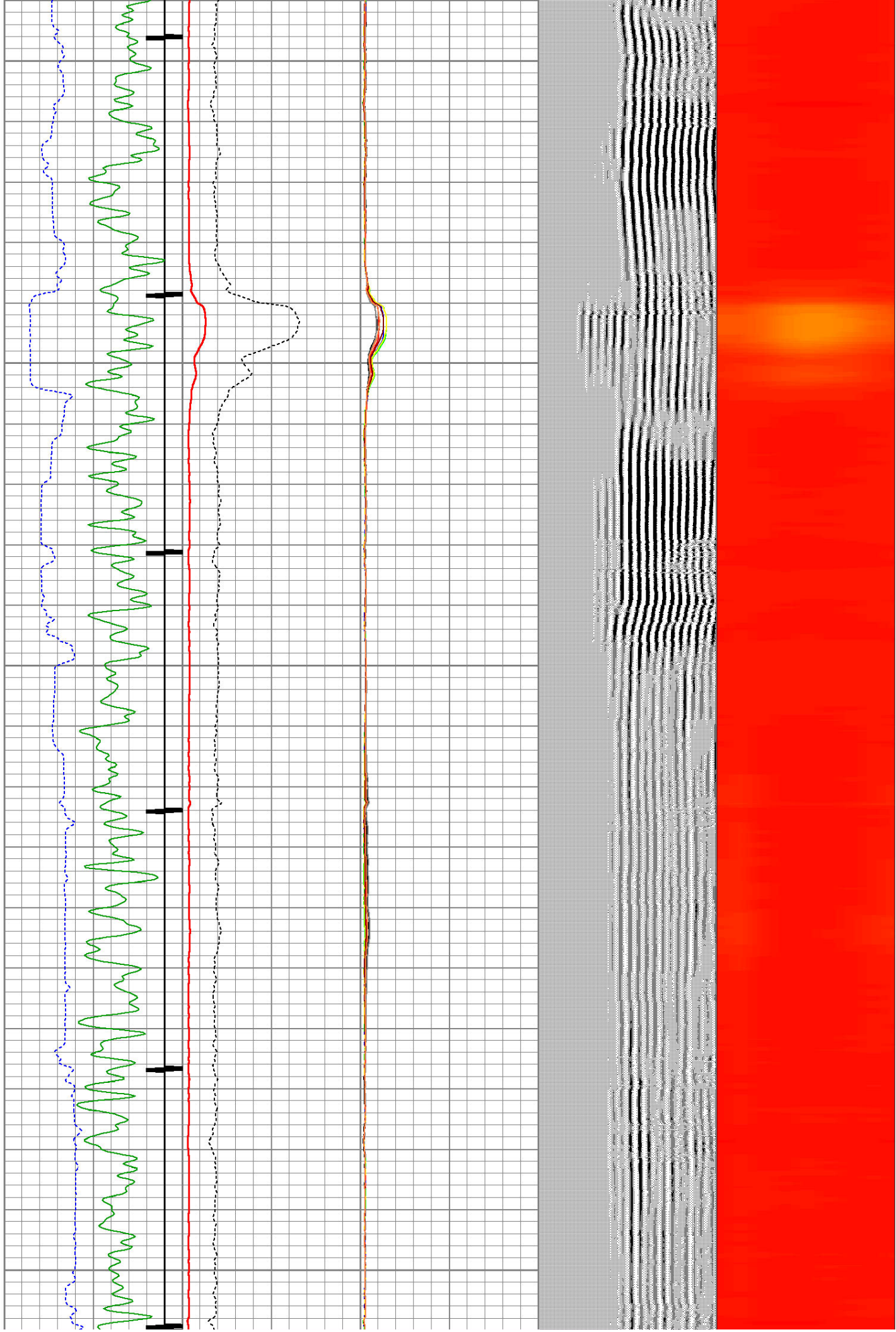
2450

2500

2550



2600
2650
2700
2750
2800

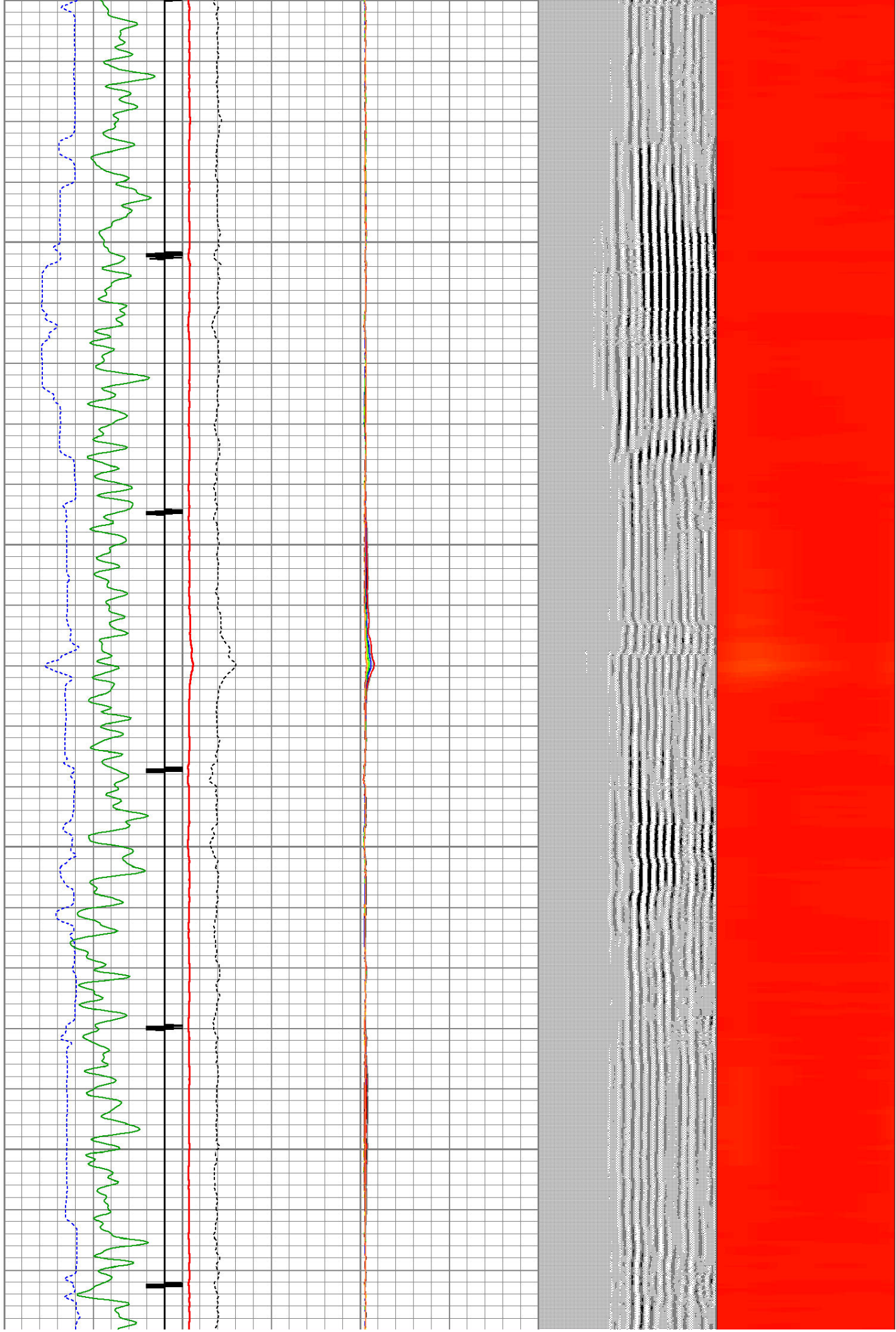


2850

2900

2950

3000



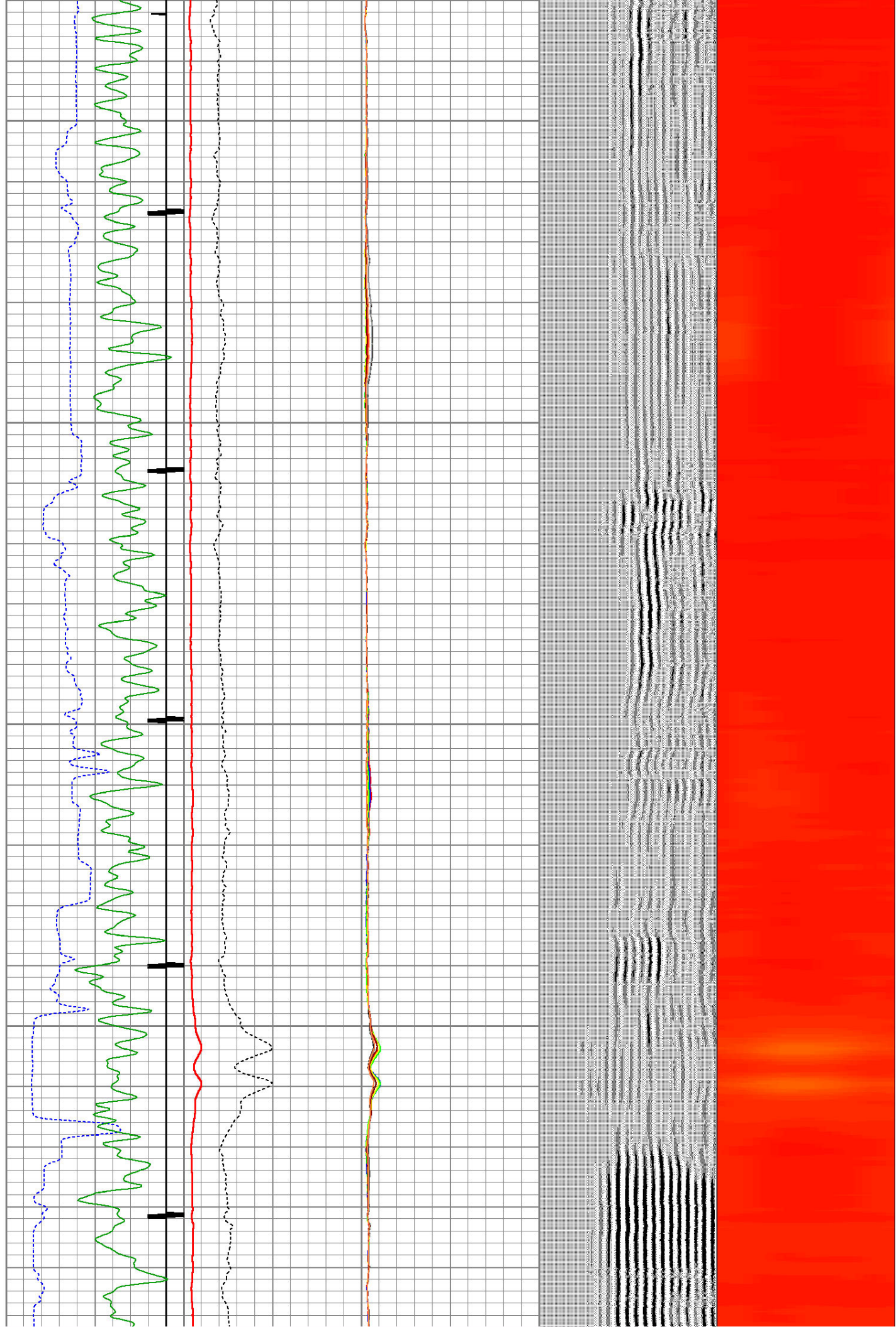
3050

3100

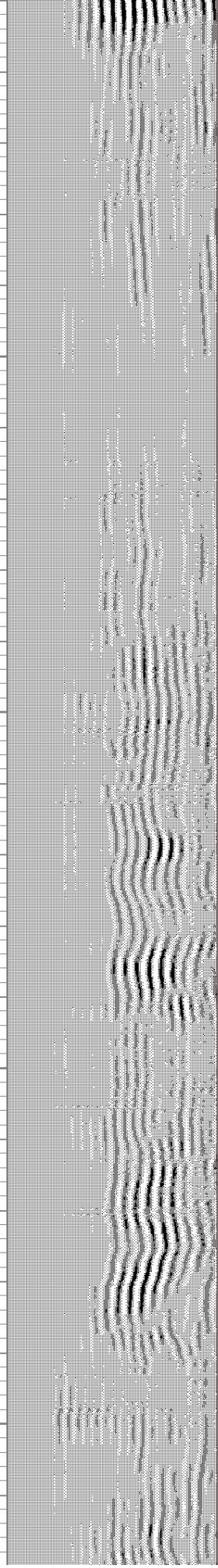
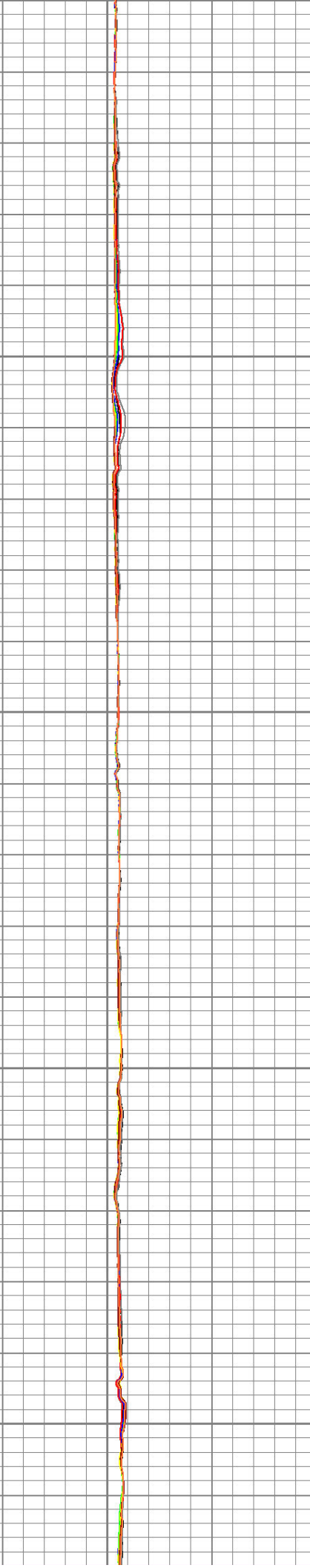
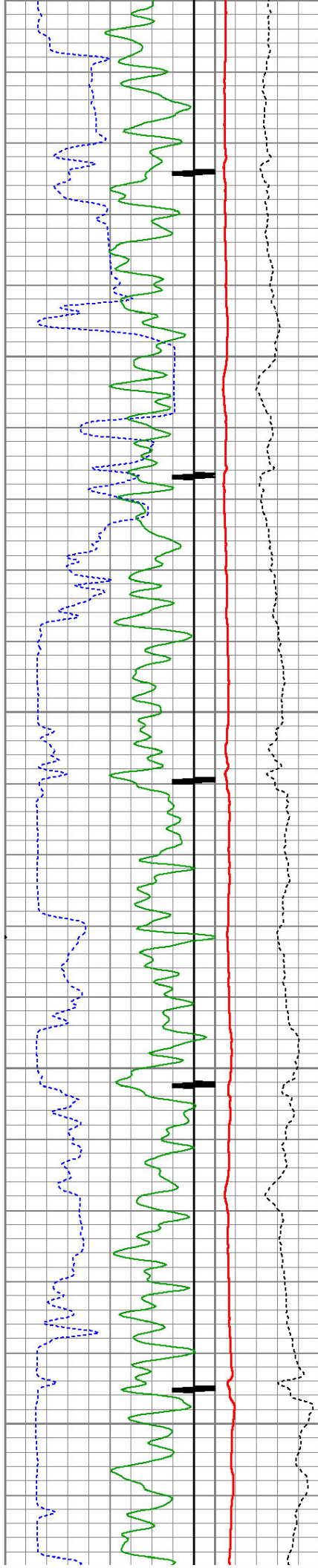
3150

3200

3250



3250
3300
3350
3400
3450

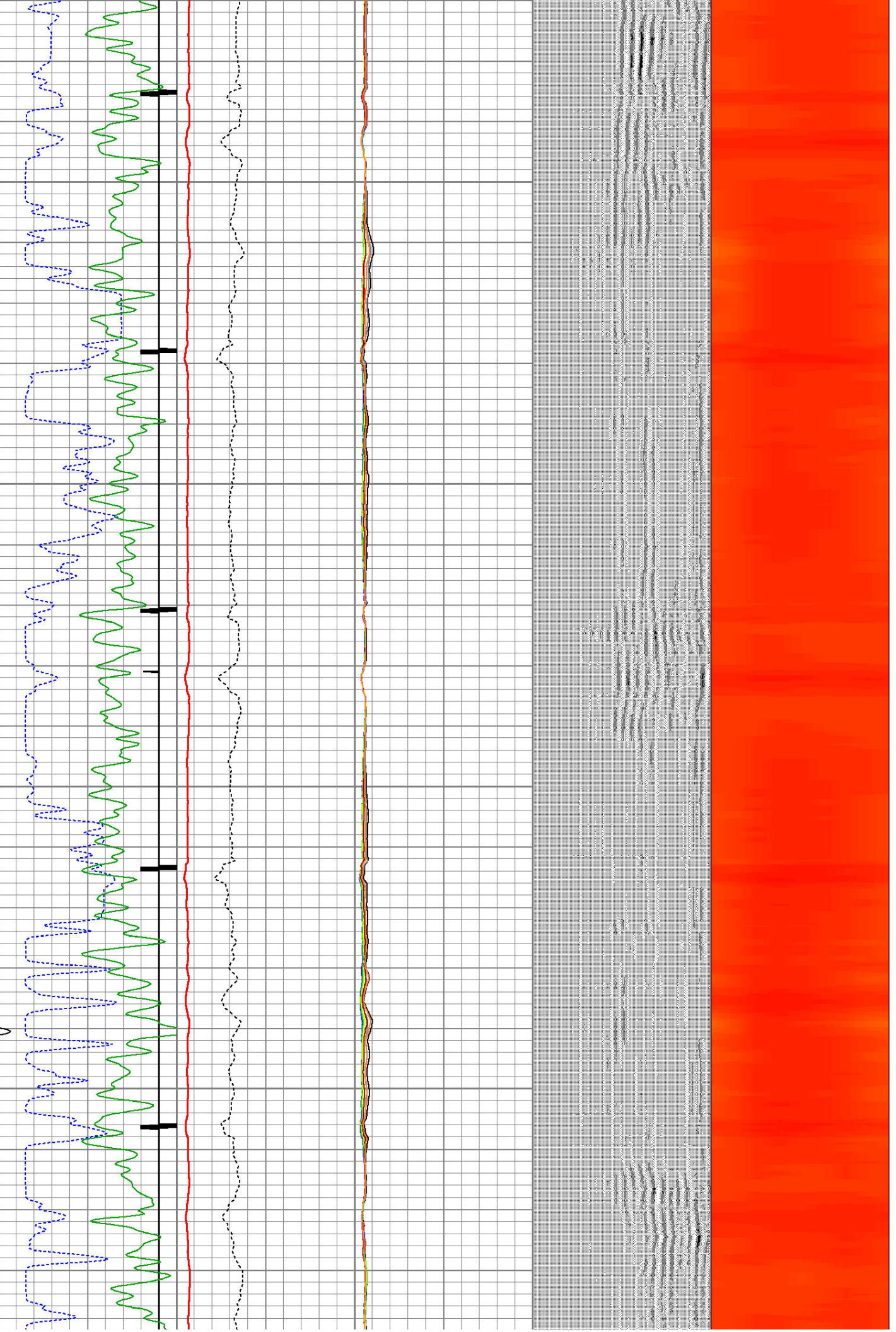


3500

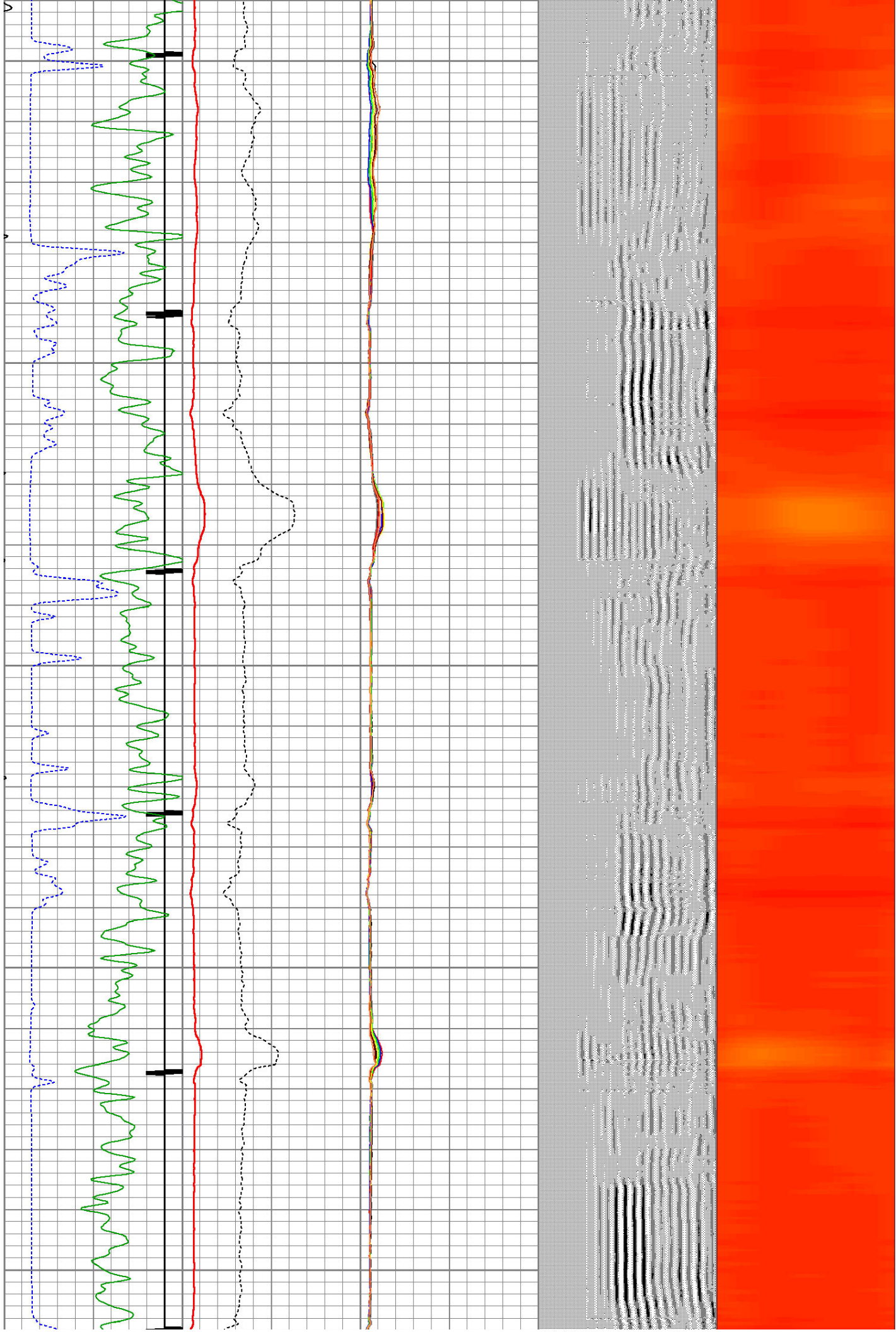
3550

3600

3650



3700
3750
3800
3850
3900

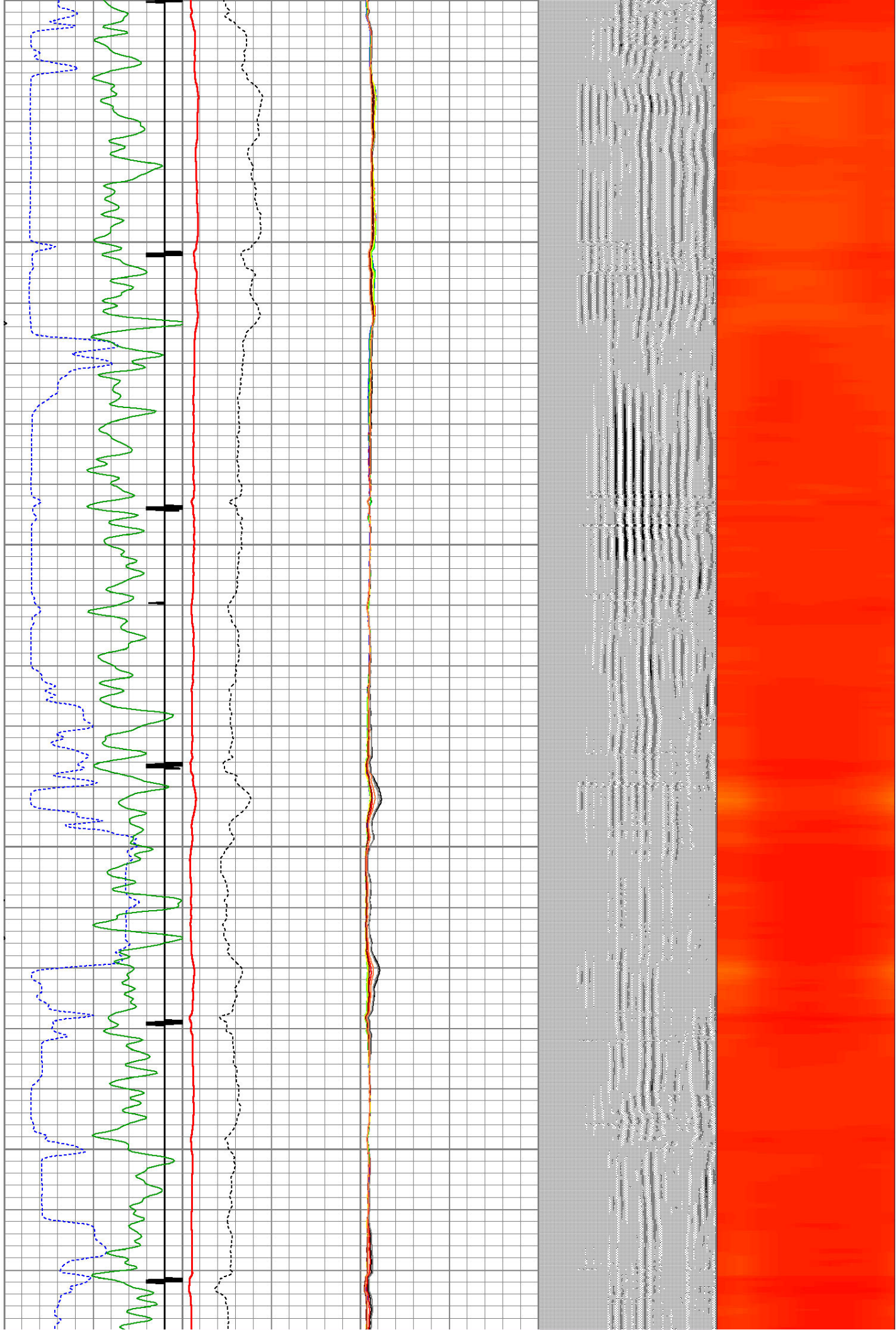


3950

4000

4050

4100



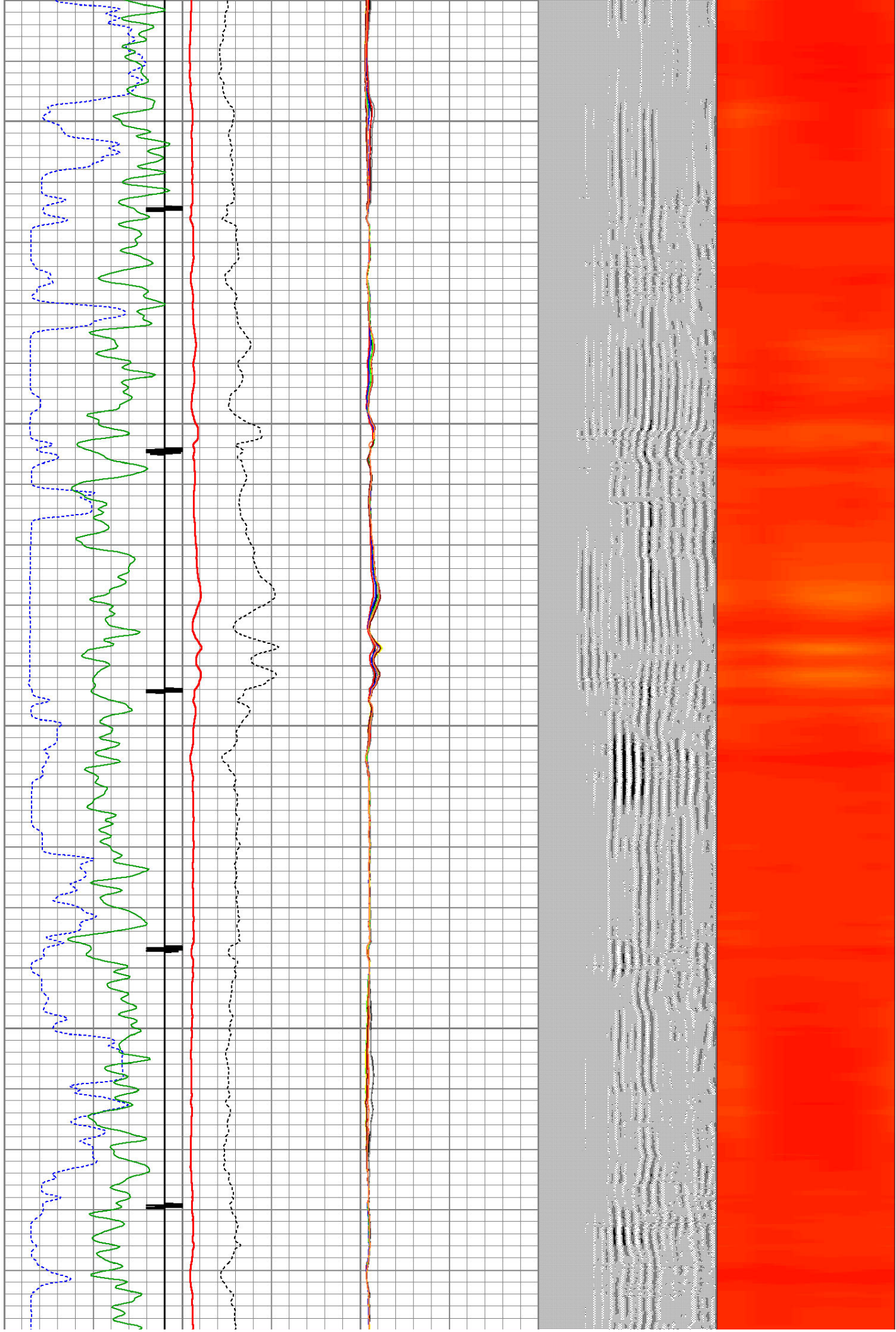
4150

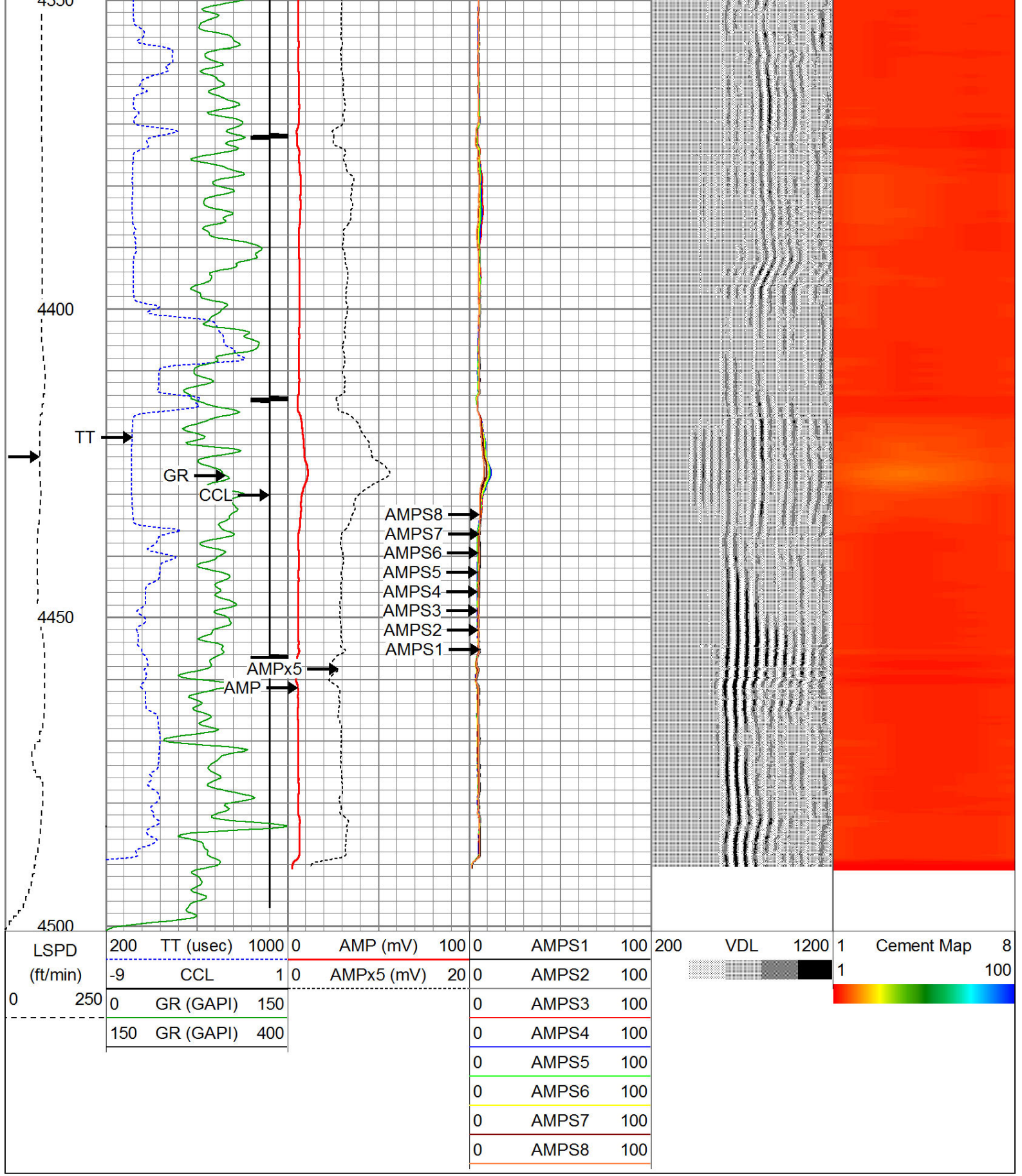
4200

4250

4300

4350





Calibration Report

Database File: guttersen state usx d21-27d.db
 Dataset Pathname: pass3
 Dataset Creation: Wed Jul 17 10:08:44 2024 by Log SCH 111116

Gamma Ray Calibration Report

Serial Number: 275
 Tool Model: Probe
 Performed: Wed Nov 06 11:09:15 2013

 Calibrator Value: 100.0 GAPI

 Background Reading: 35.0 cps
 Calibrator Reading: 160.0 cps

 Sensitivity: 0.9000 GAPI/cps

Segmented Cement Bond Log Calibration Report

Serial Number: Base
 Tool Model: Probe

 Calibration Casing Diameter: 4.500 in
 Calibration Depth: 2101.982 ft

Master Calibration, performed Wed Jun 26 07:29:38 2024:

	Raw (v)		Calibrated (mv)		Results	
	Zero	Cal	Zero	Cal	Gain	Offset
3'	-0.024	1.633	1.500	81.196	48.095	2.651
CAL	-0.024	1.500				
5'	-0.024	1.704	1.500	81.196	46.109	2.622
SUM						
S1	-0.023	1.520	0.500	81.196	52.285	1.718
S2	-0.024	1.570	0.500	81.196	50.626	1.691
S3	-0.023	1.638	0.500	81.196	48.572	1.634
S4	-0.023	1.716	0.500	81.196	46.404	1.580
S5	-0.023	1.772	0.500	81.196	44.949	1.554
S6	-0.024	1.790	0.500	81.196	44.487	1.549
S7	-0.024	1.707	0.500	81.196	46.633	1.608
S8	-0.024	1.553	0.500	81.196	51.192	1.717

Internal Reference Calibration, performed Tue Jun 05 07:53:42 2012:

	Raw (v)		Calibrated (v)		Results	
	Zero	Cal	Zero	Cal	Gain	Offset
CAL	0.000	0.000	-0.024	1.500	1.000	0.000

Air Zero Calibration, performed Wed Jul 17 09:00:17 2024:

	Raw (v)		Calibrated (v)		Results	
	Zero		Zero			Offset
3'	-0.022		0.000			-0.002
5'	-0.022		0.000			-0.002
SUM						
S1	-0.023		0.000			-0.000
S2	-0.022		0.000			-0.002
S3	-0.021		0.000			-0.002
S4	-0.022		0.000			-0.001
S5	-0.021		0.000			-0.002
S6	-0.021		0.000			-0.002
S7	-0.022		0.000			-0.002
S8	-0.022		0.000			-0.002

Company	CHEVRON
Well	GUTTERSEN STATE USX D21-27D
Field	WATTENBERG
County	WELD
State	CO