

Wellhead Closure Checklist

COGCC Rule 911.a.(4) Environmental Site Closure Assessment Field Form

Additional attachments (optional):		Pit Closure		Tank Battery Closure		Flowline Closure 3-24-22	Partially Buried Vault Closure
Site Name & COGCC Facility Number: Ulrich H14-29		Date: 3-24-22				Remediation Project #: 22146	
Associated Wells: 05-123-21811		Age of Site: years				Number of Photos Attached:	
Location: (GPS coordinates of wellhead or southeastern most wellhead for multiple)					40.4511421-104.576114		Estimated Facility Size (acres):

General Condition of Site: (General observations regarding housekeeping, corrosion, waste management, etc.)
Good Condition

USCS Soil Type: SC Estimated Depth to Groundwater: ~7-15'

Hydrocarbon Impacted Soils / Spills: (Note estimated size and if impact appears to be surficial or extends to an unknown depth)
Petroleum hydrocarbon odor observed - no petroleum hydrocarbon staining

Salt Crusted Soils or Impacted Vegetation: (Note estimated size and if impact appears to be surficial or extends to an unknown depth)

Wellhead(s)						
Well API	05-123-21811					
Age	Years					
Condition of surface around wellhead	Good-Per Crew					
PID Readings	N/A-Excavated	upon arrival				
Condition of subsurface (contaminant present)	Petroleum hydrocarbon odor observed		throughout	excavation		
PID Readings	2.1	22.3	135.4	69.2	86.2	
Sample taken? Location/Sample ID#	WH-SS-01@6'	WH-SS-02@6'	WH-SS-03@6'	WH-SS-04@6'	WH-FS-01@7'	
Photo Number(s)	See photolog					

Other observations regarding wellheads: Well casing cut/capped following assessment

Summary

Was impacted soil identified?
 No Yes - less than 10 cubic yards Yes - more than 10 cubic yards

Total number of samples field screened: 5 Total number of samples collected: 5

Highest PID Reading: 135.4 Total number of samples submitted to lab for analysis: 5

If more than 10 cubic yards of impacted soil were observed:

Vertical extent: Additional assessment required Estimated spill volume: Unknown

Lateral extent: ↓ Volume of soil removed: N/A

Is additional investigation required? Yes

Was groundwater encountered during the investigation?
No Yes - not impacted or in contact with impacted soils Yes - groundwater impacted and/or in contact with impacted soils

Measured depth to groundwater: Was remedial groundwater removal conducted? Yes No

Date Groundwater was encountered: Commencement date of removal:

Sheen on groundwater? Yes No Volume of groundwater removed prior to sampling:

Free product observed? Yes No N/A Volume of groundwater removed post sampling:

Total number of samples collected: Total Volume of groundwater removed:

Total number of samples submitted to lab for analysis:

Flowline Closure Checklist

COGCC Rule 911.a.(4) Environmental Site Closure Assessment Field Form

Additional Attachments:		Tank Battery Closure		Wellhead Closure	3-24-22	Pit Closure		Partially Buried Vault Closure	
Site Name & COGCC Facility Number: Ulrich #14-29			Date: 3-24-22			Remediation Project #: 22146			
Associated Wells: 05-123-21811			Age of Site: years			Number of Photos Attached: 1			

Starting point: (GPS coordinates and descriptions) At well: 40.451142 / -104.576114

End point: (GPS coordinates and descriptions) At sep: 40.449947 / -104.580838

USCS Soil Type: SC Estimated Depth to Groundwater: ~7-15'

Hydrocarbon Impacted Soils / Spills: (Note estimated size and if impact appears to be surficial or extends to an unknown depth)
Petroleum hydrocarbon odor observed at flowline terminus / Pt. B at separator

Salt Crusted Soils or Impacted Vegetation: (Note estimated size and if impact appears to be surficial or extends to an unknown depth)
None observed

Flowlines

Flowline type	O, G, W								
Depth	~3'								
Age	years								
Length	~1370'								
Construction Material	Steel								
Were flowlines pulled?	No - abandoned in place								
Visual Integrity of lines	N/A								
Visual impacts if trenched	Petroleum hydrocarbon odor observed								
PID Readings if trenched	156.9								
Sample taken? Location/Sample ID#	FL-SS-01 @4'								
Photo Number(s)	See photo log								

Other observations regarding on location flowlines:
Flowline terminus / Pt. B at separator assessed + lab analyzed

Summary

Was impacted soil identified?
 No Yes - less than 10 cubic yards Yes - more than 10 cubic yards

Total number of samples field screened: 1 Total number of samples collected: 1

Highest PID Reading: 156.9 Total number of samples submitted to lab for analysis: 1

If more than 10 cubic yards of impacted soil were observed:

Vertical extent: Lateral extent: N/A Estimated spill volume: Volume of soil removed:

Is additional investigation required?

Was groundwater encountered during the investigation?
 No Yes - not impacted or in contact with impacted soils Yes - groundwater impacted and/or in contact with impacted soils

Measured depth to groundwater: Was remedial groundwater removal conducted? Yes No

Date Groundwater was encountered: Commencement date of removal:

Sheen on groundwater? Yes No Volume of groundwater removed prior to sampling:

Free product observed? Yes No Volume of groundwater removed post sampling:

Total number of samples collected: Total Volume of groundwater removed:

Total number of samples submitted to lab for analysis:



FIGURES

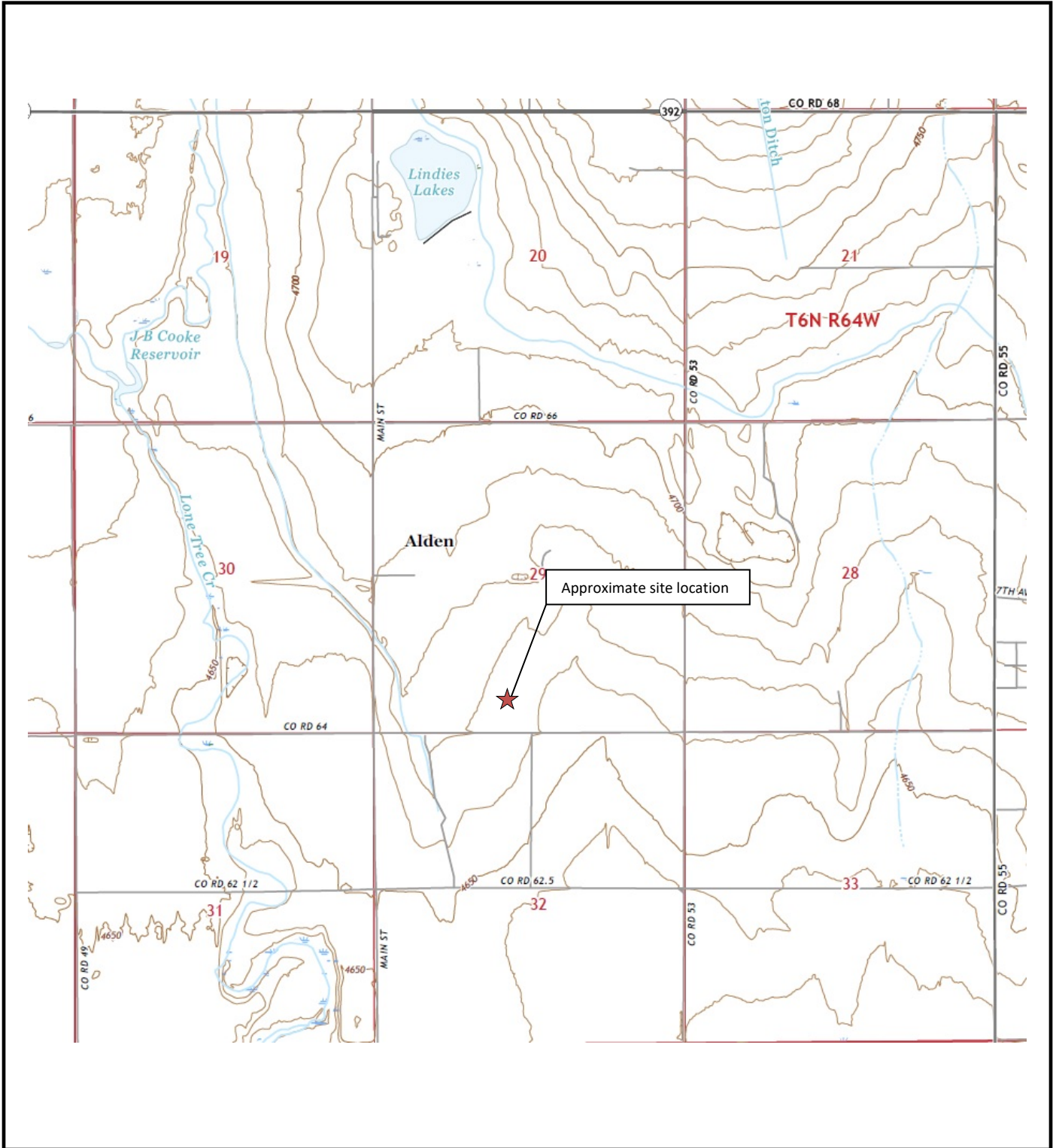
Figure 1: Topographic Site Location Map

Figure 2: Aerial Site Location Map

Figure 3: Soil Analytical Map

Figure 4: Polycyclic Aromatic Hydrocarbons Map

Figure 5: Metals in Soil Map



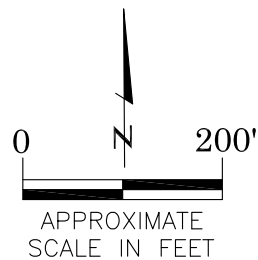
	<p>Topographic Site Location Map Uhrich #14-29 Closure Assessment 40.451142 / -104.576114 SE¼ SW¼ SEC.29 T6N R64W 6PM Weld County, Colorado API # 05-123-21811 Remediation # 22146</p>
	<p>Source: USGS 7.5 Minute Topographic Map, Kersey, CO Quadrangle 2019</p>

	<p>EAGLE ENVIRONMENTAL CONSULTING, INC.</p>
<p>Figure 1</p>	



LEGEND

- FORMER UHRICH #14-29 WELLHEAD (PLUGGED AND ABANDONED)
- ASSOCIATED SEPARATOR
- APPROXIMATE FLOWLINE LOCATION (ABANDONED IN PLACE)

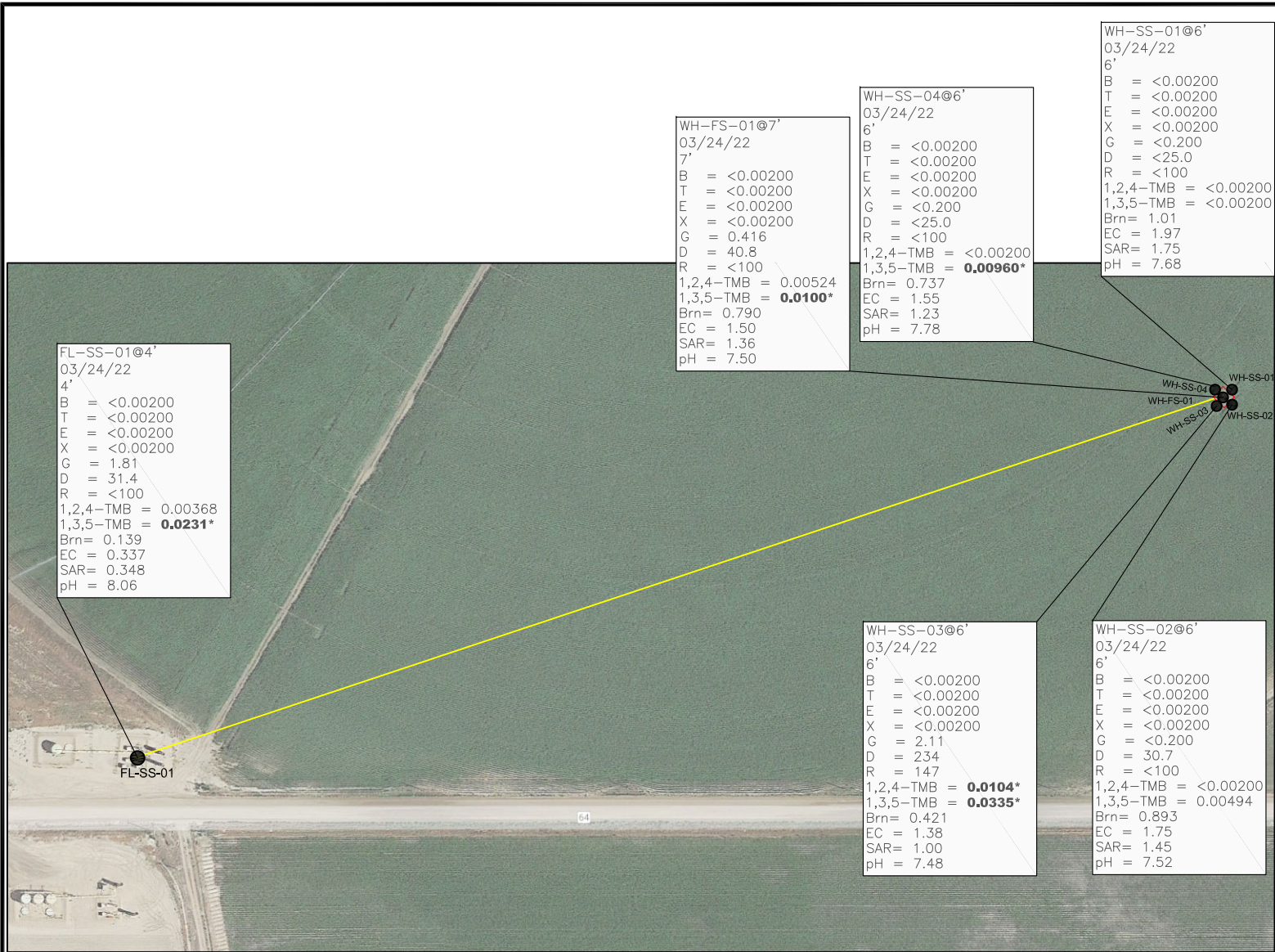


AERIAL SITE LOCATION MAP
 UHRICH #14-29
 CLOSURE ASSESSMENT
 40.451142 / -104.576114
 SE¼ SW¼ SEC.29 T6N R64W 6PM
 WELD COUNTY, COLORADO
 API # 05-123-21811
 REMEDIATION # 22146

DATE: 04/05/22	
FIG. NO. 2	DRAWN BY: AMN



EAGLE
 ENVIRONMENTAL
 CONSULTING, INC.
 8000 W 44th Ave, Wheat Ridge, CO 80033
 Ph: 303-433-0479 • F: 303-325-5449



FL-SS-01@4'
03/24/22
4'
B = <0.00200
T = <0.00200
E = <0.00200
X = <0.00200
G = 1.81
D = 31.4
R = <100
1,2,4-TMB = 0.00368
1,3,5-TMB = **0.0231***
Brn = 0.139
EC = 0.337
SAR = 0.348
pH = 8.06

WH-FS-01@7'
03/24/22
7'
B = <0.00200
T = <0.00200
E = <0.00200
X = <0.00200
G = 0.416
D = 40.8
R = <100
1,2,4-TMB = 0.00524
1,3,5-TMB = **0.0100***
Brn = 0.790
EC = 1.50
SAR = 1.36
pH = 7.50

WH-SS-04@6'
03/24/22
6'
B = <0.00200
T = <0.00200
E = <0.00200
X = <0.00200
G = <0.200
D = <25.0
R = <100
1,2,4-TMB = <0.00200
1,3,5-TMB = **0.00960***
Brn = 0.737
EC = 1.55
SAR = 1.23
pH = 7.78

WH-SS-01@6'
03/24/22
6'
B = <0.00200
T = <0.00200
E = <0.00200
X = <0.00200
G = <0.200
D = <25.0
R = <100
1,2,4-TMB = <0.00200
1,3,5-TMB = <0.00200
Brn = 1.01
EC = 1.97
SAR = 1.75
pH = 7.68

WH-SS-03@6'
03/24/22
6'
B = <0.00200
T = <0.00200
E = <0.00200
X = <0.00200
G = 2.11
D = 234
R = 147
1,2,4-TMB = **0.0104***
1,3,5-TMB = **0.0335***
Brn = 0.421
EC = 1.38
SAR = 1.00
pH = 7.48

WH-SS-02@6'
03/24/22
6'
B = <0.00200
T = <0.00200
E = <0.00200
X = <0.00200
G = <0.200
D = 30.7
R = <100
1,2,4-TMB = <0.00200
1,3,5-TMB = 0.00494
Brn = 0.893
EC = 1.75
SAR = 1.45
pH = 7.52

LEGEND

- INITIAL WELLHEAD ASSESSMENT BOUNDARIES
- APPROXIMATE FLOWLINE LOCATION (ABANDONED)
- APPROXIMATE LOCATION OF SOIL SAMPLES SUBMITTED FOR LABORATORY ANALYSIS

PARAMETERS

SAMPLE LOCATION
DATE
DEPTH (FEET)
B = BENZENE (mg/kg)
T = TOLUENE (mg/kg)
E = ETHYLBENZENE (mg/kg)
X = TOTAL XYLENES (mg/kg)
G = TPH-GRO (mg/kg)
D = TPH-DRO (mg/kg)
R = TPH-RRO (mg/kg)
1,2,4-TMB = 1,2,4 TRIMETHYLBENZENE (mg/kg)
1,3,5-TMB = 1,3,5 TRIMETHYLBENZENE (mg/kg)
Brn = BORON (mg/L)
EC = SPECIFIC CONDUCTANCE (mmhos/cm)
SAR = SODIUM ADSORPTION RATIO
pH = pH (pH UNITS)

mg/kg = MILLIGRAMS PER KILOGRAM
mg/L = MILLIGRAMS PER LITER
mmhos/cm = MILLIMHOS PER CENTIMETER

TPH-GRO = TOTAL PETROLEUM HYDROCARBONS - GASOLINE RANGE ORGANICS
TPH-DRO = TOTAL PETROLEUM HYDROCARBONS - DIESEL RANGE ORGANICS
TPH-RRO = TOTAL PETROLEUM HYDROCARBONS - RESIDUAL RANGE ORGANICS

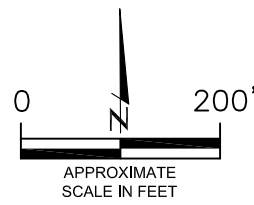
NOTES:
VALUES PRESENTED WITH A LESS THAN SYMBOL (<) DID NOT CONTAIN CONCENTRATIONS AT OR ABOVE LABORATORY DETECTION LIMITS

VALUES PRESENTED IN **BOLD** VALUES CONTAIN CONCENTRATIONS THAT EXCEED COGCC TABLE 915-1 REGULATORY LIMITS FOR THAT COMPOUND.

VALUES PRESENTED WITH ASTERISK (*) EXCEED COGCC TABLE 915-1 PROTECTION OF GROUNDWATER SOIL SCREENING LEVELS FOR THAT COMPOUND.

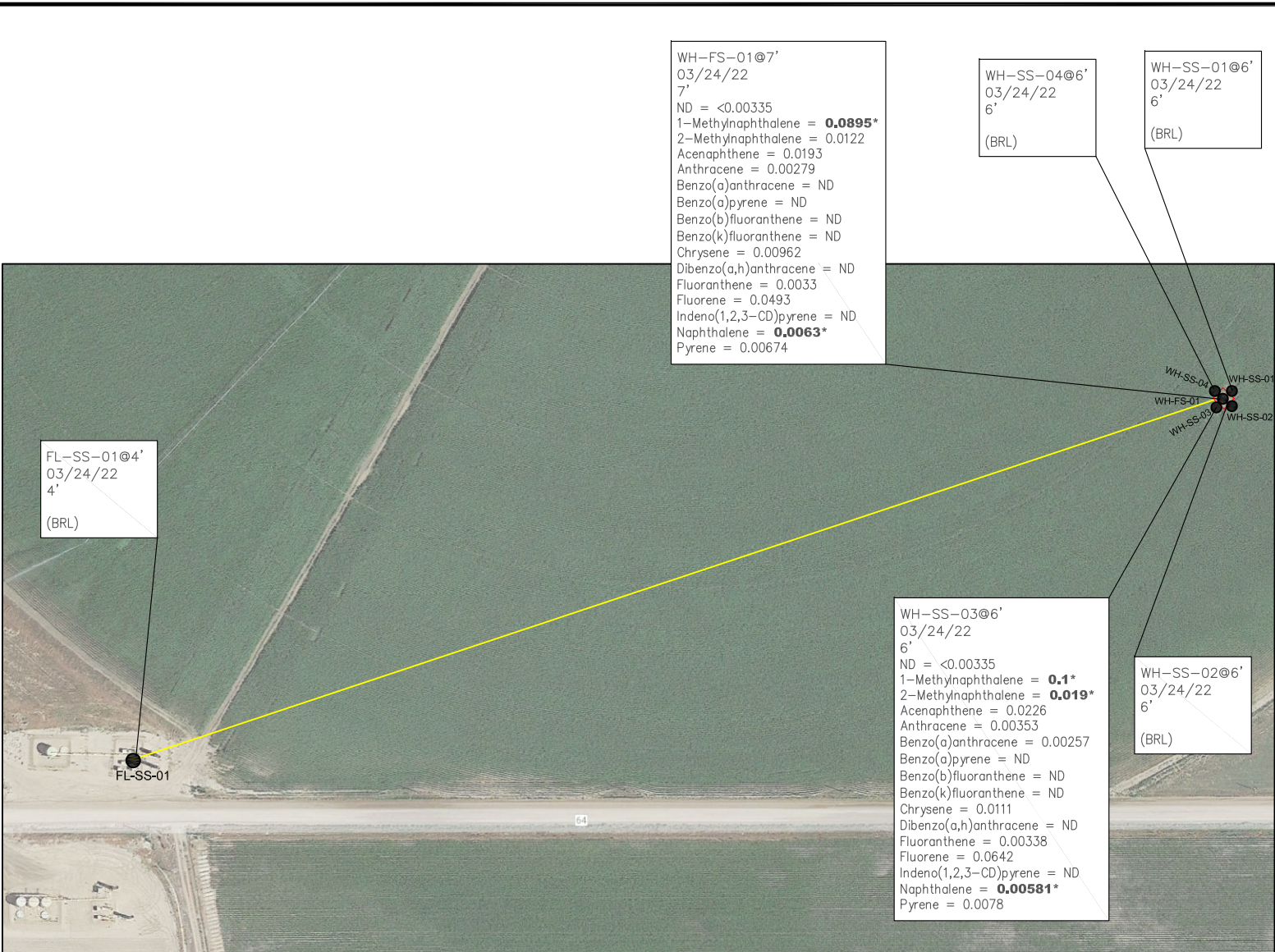
COGCC = COLORADO OIL AND GAS CONSERVATION COMMISSION

SOIL ANALYTICAL MAP
UHRICH #14-29
CLOSURE ASSESSMENT
40.451142 / -104.576114
SE ¼ SW ¼ SEC.29 T6N R64W 6PM
WELD COUNTY, COLORADO
API # 05-123-21811
REMEDIATION # 22146



DATE: 04/05/22
DRAWN BY: AMN
FIG. NO. 3

EAGLE ENVIRONMENTAL CONSULTING, INC.
8000 W 44th Ave, Wheat Ridge, CO 80033
Ph: 303-433-0479 • F: 303-325-5449



WH-FS-01@7'
03/24/22
7'
ND = <0.00335
1-Methylnaphthalene = **0.0895***
2-Methylnaphthalene = 0.0122
Acenaphthene = 0.0193
Anthracene = 0.00279
Benzo(a)anthracene = ND
Benzo(a)pyrene = ND
Benzo(b)fluoranthene = ND
Benzo(k)fluoranthene = ND
Chrysene = 0.00962
Dibenzo(a,h)anthracene = ND
Fluoranthene = 0.0033
Fluorene = 0.0493
Indeno(1,2,3-CD)pyrene = ND
Naphthalene = **0.0063***
Pyrene = 0.00674

WH-SS-04@6'
03/24/22
6'
(BRL)

WH-SS-01@6'
03/24/22
6'
(BRL)

FL-SS-01@4'
03/24/22
4'
(BRL)

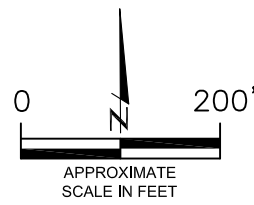
WH-SS-03@6'
03/24/22
6'
ND = <0.00335
1-Methylnaphthalene = **0.1***
2-Methylnaphthalene = **0.019***
Acenaphthene = 0.0226
Anthracene = 0.00353
Benzo(a)anthracene = 0.00257
Benzo(a)pyrene = ND
Benzo(b)fluoranthene = ND
Benzo(k)fluoranthene = ND
Chrysene = 0.0111
Dibenzo(a,h)anthracene = ND
Fluoranthene = 0.00338
Fluorene = 0.0642
Indeno(1,2,3-CD)pyrene = ND
Naphthalene = **0.00581***
Pyrene = 0.0078

WH-SS-02@6'
03/24/22
6'
(BRL)

LEGEND
- - - INITIAL WELLHEAD ASSESSMENT BOUNDARIES
— APPROXIMATE FLOWLINE LOCATION (ABANDONED)
● APPROXIMATE LOCATION OF SOIL SAMPLES SUBMITTED FOR LABORATORY ANALYSIS
SS-02

PARAMETERS
SAMPLE LOCATION
DATE SAMPLE COLLECTED
APPROXIMATE DEPTH
POLYCYCLIC AROMATIC HYDROCARBONS (PAHs)
NOTE:
CONCENTRATIONS PRESENTED IN mg/kg
mg/kg = MILLIGRAMS PER KILOGRAM
ND = NON-DETECT
(BRL) - ALL CONCENTRATIONS BELOW REGULATORY LIMITS
NOTE:
VALUES PRESENTED WITH A LESS THAN SYMBOL (<) DID NOT CONTAIN CONCENTRATIONS AT OR ABOVE LABORATORY DETECTION LIMITS
VALUES PRESENTED IN **BOLD** VALUES CONTAIN CONCENTRATIONS EXCEEDING COGCC TABLE 915-1 REGULATORY LIMITS.
VALUES PRESENTED WITH AN ASTERISK (*) EXCEED COGCC TABLE 915-1 GROUNDWATER SOIL SCREENING LEVELS FOR THAT COMPOUND
COGCC = COLORADO OIL AND GAS CONSERVATION COMMISSION

POLYCYCLIC AROMATIC HYDROCARBONS MAP
UHRICH #14-29
CLOSURE ASSESSMENT
40.451142 / -104.576114
SE¼ SW¼ SEC.29 T6N R64W 6PM
WELD COUNTY, COLORADO
API # 05-123-21811
REMEDATION # 22146



DATE:
04/05/22
DRAWN BY:
AMN
FIG.
NO. 4

EAGLE ENVIRONMENTAL CONSULTING, INC.
8000 W 44th Ave, Wheat Ridge, CO 80033
Ph: 303-433-0479 • F: 303-325-5449

LEGEND

- - - INITIAL WELLHEAD ASSESSMENT BOUNDARIES
- APPROXIMATE FLOWLINE LOCATION (ABANDONED)
- APPROXIMATE LOCATION OF SOIL SAMPLES SUBMITTED FOR LABORATORY ANALYSIS

PARAMETERS

SAMPLE LOCATION
 DATE SAMPLE COLLECTED
 APPROXIMATE DEPTH
 Arsenic = (mg/kg)
 Barium = (mg/kg)
 Cadmium = (mg/kg)
 Chromium (VI) = (mg/kg)
 Copper = (mg/kg)
 Lead = (mg/kg)
 Nickel = (mg/kg)
 Selenium = (mg/kg)
 Silver = (mg/kg)
 Zinc = (mg/kg)

mg/kg = MILLIGRAMS PER KILOGRAM

(NS) = NOT SAMPLED
 NA = NOT ANALYZED

NOTE:

VALUES PRESENTED WITH A LESS THAN SYMBOL (<) DID NOT CONTAIN CONCENTRATIONS AT/OR ABOVE LABORATORY REPORTING LIMITS AND/OR MINIMUM DETECTION LIMITS.

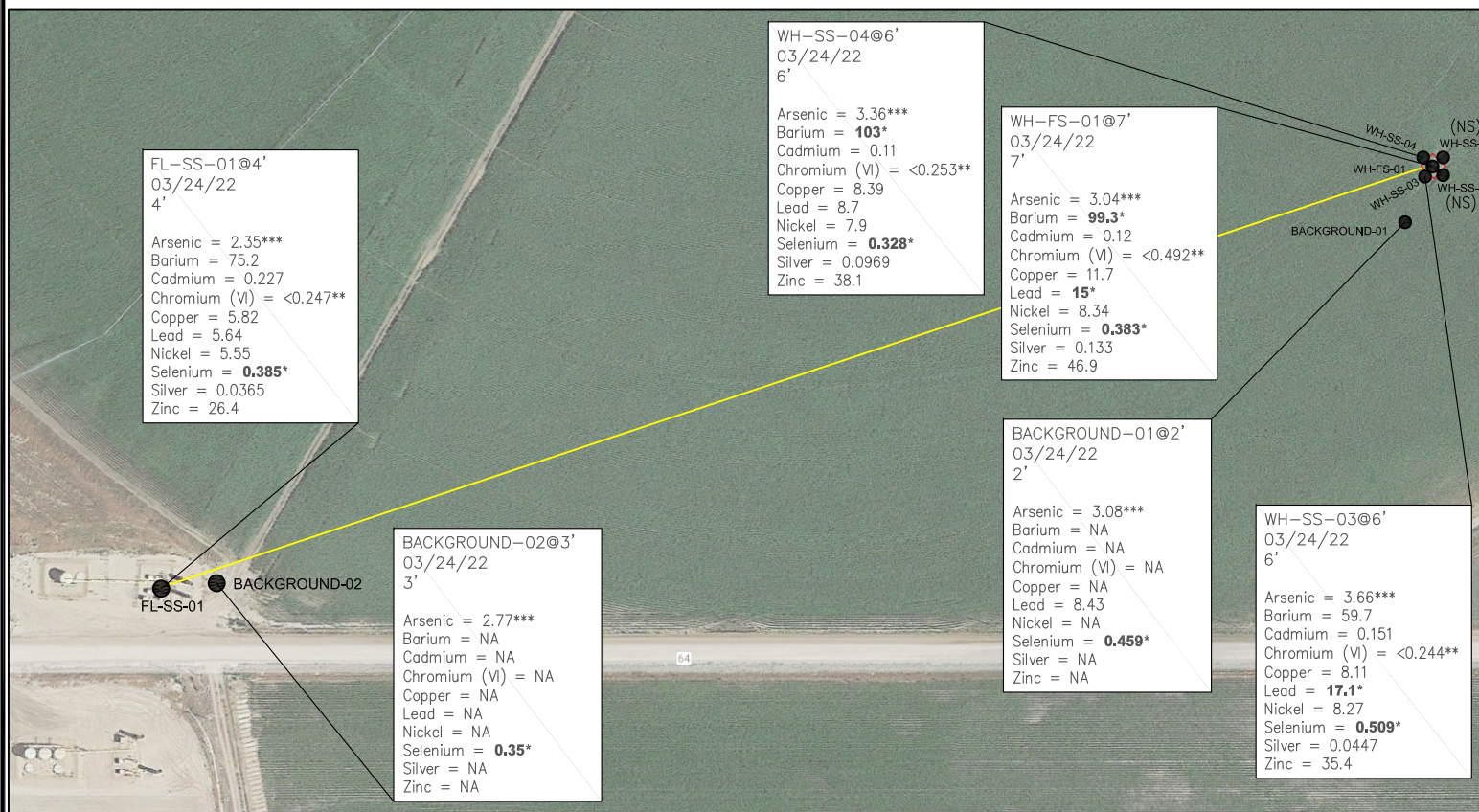
VALUES PRESENTED IN **BOLD** VALUES CONTAIN CONCENTRATIONS EXCEEDING COGCC TABLE 915-1 VALUES

*VALUES EXCEED COGCC TABLE 915-1 "PROTECTION OF GROUNDWATER SOIL SCREENING LEVELS" FOR THAT COMPOUND.

**ACHIEVABLE PRACTICAL QUANTITATIVE LIMITS FOR HEXAVALENT CHROMIUM (Cr VI) IN SOILS IS IN THE RANGE OF 0.1 TO 1 mg/kg.

***ARSENIC IS NATURALLY OCCURRING IN COLORADO. THE LOCAL CLEAN-UP LEVEL (3.66 mg/kg) IS 1.25*BACKGROUND MEAN (2.93 mg/kg).

COGCC = COLORADO OIL AND GAS CONSERVATION COMMISSION



FL-SS-01@4'
 03/24/22
 4'

Arsenic = 2.35***
 Barium = 75.2
 Cadmium = 0.227
 Chromium (VI) = <0.247**
 Copper = 5.82
 Lead = 5.64
 Nickel = 5.55
 Selenium = **0.385***
 Silver = 0.0365
 Zinc = 26.4

WH-SS-04@6'
 03/24/22
 6'

Arsenic = 3.36***
 Barium = **103***
 Cadmium = 0.11
 Chromium (VI) = <0.253**
 Copper = 8.39
 Lead = 8.7
 Nickel = 7.9
 Selenium = **0.328***
 Silver = 0.0969
 Zinc = 38.1

WH-FS-01@7'
 03/24/22
 7'

Arsenic = 3.04***
 Barium = **99.3***
 Cadmium = 0.12
 Chromium (VI) = <0.492**
 Copper = 11.7
 Lead = **15***
 Nickel = 8.34
 Selenium = **0.383***
 Silver = 0.133
 Zinc = 46.9

BACKGROUND-01@2'
 03/24/22
 2'

Arsenic = 3.08***
 Barium = NA
 Cadmium = NA
 Chromium (VI) = NA
 Copper = NA
 Lead = 8.43
 Nickel = NA
 Selenium = **0.459***
 Silver = NA
 Zinc = NA

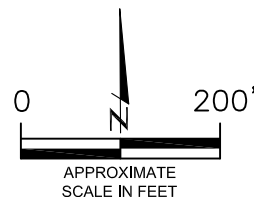
WH-SS-03@6'
 03/24/22
 6'

Arsenic = 3.66***
 Barium = 59.7
 Cadmium = 0.151
 Chromium (VI) = <0.244**
 Copper = 8.11
 Lead = **17.1***
 Nickel = 8.27
 Selenium = **0.509***
 Silver = 0.0447
 Zinc = 35.4

BACKGROUND-02@3'
 03/24/22
 3'

Arsenic = 2.77***
 Barium = NA
 Cadmium = NA
 Chromium (VI) = NA
 Copper = NA
 Lead = NA
 Nickel = NA
 Selenium = **0.35***
 Silver = NA
 Zinc = NA

METALS IN SOIL MAP
 UHRICH #14-29
 CLOSURE ASSESSMENT
 40.451142 / -104.576114
 SE¼ SW¼ SEC.29 T6N R64W 6PM
 WELD COUNTY, COLORADO
 API # 05-123-21811
 REMEDIATION # 22146



DATE: 08/11/22
 DRAWN BY: AMN
 FIG. NO. 5

EAGLE ENVIRONMENTAL CONSULTING, INC.
 8000 W 44th Ave, Wheat Ridge, CO 80033
 Ph: 303-433-0479 • F: 303-325-5449



TABLES

Table 1: Photoionization Detector Reading Summary

Table 2: Soil Analytical Results Summary

Table 3: Polycyclic Aromatic Hydrocarbons Analytical Results Summary

Table 4: Metals Analytical Results Summary

TABLE 1
PHOTOIONIZATION DETECTOR READING SUMMARY
UHRICH #14-29
CLOSURE ASSESSMENT
40.451142 / -104.576114
SE1/4 SW1/4 SEC.29 T6N R64W 6PM
WELD COUNTY, COLORADO
API # 05-123-21811
REMEDICATION # 22146

Sample Location (Latitude/Longitude)	Date	Approximate Depth (feet)	PID Reading (ppm-v)	Lab Submission (Y/N)
WH-SS-01 @ 6' (40.451164 / -104.576140)	03/24/22	6	2.1	Y
WH-SS-02 @ 6' (40.451135 / -104.576101)	03/24/22	6	22.3	Y
WH-SS-03 @ 6' (40.451104 / -104.576132)	03/24/22	6	135.4	Y
WH-SS-04 @ 6' (40.451136 / -104.576180)	03/24/22	6	69.2	Y
WH-FS-01 @ 7' (40.451140 / -104.476139)	03/24/22	7	86.2	Y
FL-SS-01 @ 4' (40.449945 / -104.580840)	03/24/22	4	156.9	Y
Background-01 @ 2' (40.451054 / -104.576216)	03/24/22	2	2.1	Y
Background-02 @ 3' (40.449985 / -104.580611)	03/24/22	3	4.2	Y
(Y/N) = Yes or No ppm-v = parts per million by volume PID = photoionization detector				

TABLE 2
SOIL ANALYTICAL RESULTS SUMMARY
UHRICH #14-29
CLOSURE ASSESSMENT
40.451142 / -104.576114
SE1/4 SW1/4 SEC.29 T6N R64W 6PM
WELD COUNTY, COLORADO
API # 05-123-21811
REMEDIAION # 22146

Sample Location (Latitude/Longitude)	Date	Approximate Depth (feet)	PID Reading (ppm-v)	Benzene (mg/kg)	Toluene (mg/kg)	Ethylbenzene (mg/kg)	Total Xylenes (mg/kg)	TPH-GRO (mg/kg)	TPH-DRO (mg/kg)	TPH-RRO (mg/kg)	1,2,4-TMB (mg/kg)	1,3,5-TMB (mg/kg)	Boron (mg/L)	Specific Conductance (mmhos/cm)	pH (pH units)	SAR
COGCC Table 915-1 Residential Screening Levels (mg/kg)				1.20	490	5.8	58	500			30	27	2	<4	6-8.3	<6
COGCC Table 915-1 Protection of Groundwater Soil Screening Levels				0.0026	0.69	0.78	9.9	--			0.0081	0.0087	--	--	--	--
WH-SS-01 @ 6' (40.451164 / -104.576140)	03/24/22	6	2.1	<0.00200	<0.00200	<0.00200	<0.00200	<0.200	<25.0	<100	<0.00200	<0.00200	1.01	1.97	7.68	1.75
WH-SS-02 @ 6' (40.451135 / -104.576101)	03/24/22	6	22.3	<0.00200	<0.00200	<0.00200	<0.00200	<0.200	30.7	<100	<0.00200	0.00494	0.893	1.75	7.52	1.45
WH-SS-03 @ 6' (40.451104 / -104.576132)	03/24/22	6	135.4	<0.00200	<0.00200	<0.00200	<0.00200	2.11	234	147	0.0104*	0.0335*	0.421	1.00	7.48	1.38
WH-SS-04 @ 6' (40.451136 / -104.576180)	03/24/22	6	69.2	<0.00200	<0.00200	<0.00200	<0.00200	<0.200	<25.0	<100	<0.00200	0.00960*	0.737	1.55	7.78	1.23
WH-FS-01 @ 7' (40.451140 / -104.476139)	03/24/22	7	86.2	<0.00200	<0.00200	<0.00200	<0.00200	0.416	40.8	<100	0.00524	0.0100*	0.790	1.50	7.50	1.36
FL-SS-01 @ 4' (40.449945 / -104.580840)	03/24/22	4	156.9	<0.00200	<0.00200	<0.00200	<0.00200	1.81	31.4	<100	0.00368	0.0231*	0.139	0.337	8.06	0.348

COGCC = Colorado Oil and Gas Conservation Commission
mg/kg = milligrams per kilogram
mmhos/cm = millimhos per centimeter
PID = Photoionization Detector
ppm-v = parts per million by volume
mg/L = milligrams per liter
SAR = Sodium Adsorption Ratio

TPH-GRO = Total Petroleum Hydrocarbons - Gasoline Range Organics
TPH-DRO = Total Petroleum Hydrocarbons - Diesel Range Organics
TPH-RRO = Total Petroleum Hydrocarbons - Residual Range Organics

1,2,4-TMB = 1,2,4-Trimethylbenzene
1,3,5-TMB = 1,3,5-Trimethylbenzene

MDL = Minimum Detection Limits

Note: Values presented with a less than symbol (<) did not contain concentrations at or above the laboratory MDL and/or reporting limit.
Note: Values presented in **BOLD** contained concentrations exceeding COGCC Table 915-1 Regulatory Limits. Values with asterisk (*) exceed COGCC Table 915-1 protection of groundwater soil screening levels for that compound



TABLE 3
POLYCYCLIC AROMATIC HYDROCARBONS ANALYTICAL RESULTS SUMMARY
UHRICH #14-29
CLOSURE ASSESSMENT
40.451142 / -104.576114
SE1/4 SW1/4 SEC.29 T6N R64W 6PM
WELD COUNTY, COLORADO
API # 05-123-21811
REMEDIATION # 22146

Sample Location (Latitude/Longitude)	Date	Approximate Depth (feet)	PID Reading (ppm- v)	1-Methyl- naphthalene (mg/kg)	2-Methyl- naphthalene (mg/kg)	Acenaphthene (mg/kg)	Anthracene (mg/kg)	Benzo(a)- anthracene (mg/kg)	Benzo(a)- pyrene (mg/kg)	Benzo(b)- fluoranthene (mg/kg)	Benzo(k)- fluoranthene (mg/kg)	Chrysene (mg/kg)	Dibenzo(a,h)- anthracene (mg/kg)	Fluoranthene (mg/kg)	Fluorene (mg/kg)	Indeno(1,2,3- cd)-pyrene (mg/kg)	Naphthalene (mg/kg)	Pyrene (mg/kg)
COGCC Table 915-1 Residential Screening Levels				18	24	360	1,800	1.1	0.11	1.1	11	110	0.11	240	240	1.1	2	180
COGCC Table 915-1 Protection of Groundwater Soil Screening Levels				0.006	0.019	0.55	5.8	0.011	0.24	0.3	2.9	9	0.096	8.9	0.54	0.98	0.0038	1.3
WH-SS-01 @ 6' (40.451164 / -104.576140)	03/24/22	6	2.1	0.00322	0.00428	0.000567	<0.00067	<0.00067	0.000536	0.000713	<0.00067	0.000809	<0.00067	0.000781	0.00133	<0.00067	0.00114	0.000926
WH-SS-02 @ 6' (40.451135 / -104.576101)	03/24/22	6	22.3	0.00342	<0.00335	0.00668	<0.00335	<0.00335	<0.00335	<0.00335	<0.00335	0.00331	<0.00335	<0.00335	0.00997	<0.00335	<0.00335	<0.00335
WH-SS-03 @ 6' (40.451104 / -104.576132)	03/24/22	6	135.4	0.1*	0.019*	0.0226	0.00353	0.00257	<0.00335	<0.00335	<0.00335	0.0111	<0.00335	0.00338	0.0642	<0.00335	0.00581*	0.0078
WH-SS-04 @ 6' (40.451136 / -104.576180)	03/24/22	6	69.2	0.00171	0.00232	0.000397	<0.00067	0.00101	0.000971	0.00178	0.00148	0.00155	0.00163	0.000504	0.000613	0.00193	<0.00067	<0.00067
WH-FS-01 @ 7' (40.451140 / -104.476139)	03/24/22	7	86.2	0.0895*	0.0122	0.0193	0.00279	<0.00335	<0.00335	<0.00335	<0.00335	0.00962	<0.00335	0.0033	0.0493	<0.00335	0.0063*	0.00674
FL-SS-01 @ 4' (40.449945 / -104.580840)	03/24/22	4	156.9	0.00484	0.00301	0.00129	<0.00067	<0.00067	<0.00067	<0.00067	<0.00067	0.000772	<0.00067	<0.00067	0.0027	<0.00067	0.000744	0.000699

COGCC = Colorado Oil and Gas Conservation Commission PID = Photoionization Detector
mg/kg = milligrams per kilogram ppm-v = parts per million by volume

Note: Values presented with a less than symbol (<) did not contain concentrations at or above the laboratory reporting limit.

Note: Values presented in **BOLD** contained concentrations exceeding COGCC Table 915-1 Regulatory Limits. Values with asterisk (*) exceed COGCC Table 915-1 protection of groundwater soil screening levels for that compound

TABLE 4
 METALS ANALYTICAL RESULTS SUMMARY
 UHRICH #14-29
 CLOSURE ASSESSMENT
 40.451142 / -104.576114
 SE1/4 SW1/4 SEC.29 T6N R64W 6PM
 WELD COUNTY, COLORADO
 API # 05-123-21811
 REMEDIATION # 22146

Sample Location (Latitude/Longitude)	Date	Approximate Depth (feet)	Arsenic (mg/kg)	Barium (mg/kg)	Cadmium (mg/kg)	Hexavalent Chromium (mg/kg)	Copper (mg/kg)	Lead (mg/kg)	Nickel (mg/kg)	Selenium (mg/kg)	Silver (mg/kg)	Zinc (mg/kg)
COGCC Table 915-1 Residential Screening Levels			0.68***	15,000	71	0.3**	3,100	400	1,500	390	390	23,000
COGCC Table 915-1 Protection of Groundwater Soil Screening Levels			0.29***	82	0.38	0.00067**	46	14	26	0.26	0.8	370
Local Clean-up Level			3.66***	-	-	-	-	-	-	-	-	-
WH-SS-03 @ 6' (40.451104 / -104.576132)	03/24/22	6	3.66***	59.7	0.151	<0.244**	8.11	17.1*	8.27	0.509*	0.0447	35.4
WH-SS-04 @ 6' (40.451136 / -104.576180)	03/24/22	6	3.36***	103*	0.11	<0.253**	8.39	8.7	7.9	0.328*	0.0969	38.1
WH-FS-01 @ 7' (40.451140 / -104.476139)	03/24/22	7	3.04***	99.3*	0.12	<0.492**	11.7	15*	8.34	0.383*	0.133	46.9
FL-SS-01 @ 4' (40.449945 / -104.580840)	03/24/22	4	2.35***	75.2	0.227	<0.247**	5.82	5.64	5.55	0.385*	0.0365	26.4
Background-01 @ 2' (40.451054 / -104.576216)	03/24/22	2	3.08***	NA	NA	NA	NA	8.43	NA	0.459*	NA	NA
Background-02 @ 3' (40.449985 / -104.580611)	03/24/22	3	2.77***	NA	NA	NA	NA	NA	NA	0.35*	NA	NA
COGCC = Colorado Oil and Gas Conservation Commission mg/kg = milligrams per kilogram NA = Not Analyzed Notes: Values presented with a less than symbol (<) did not contain concentrations at or above the laboratory reporting limit or minimum detection levels. Values presented in BOLD contained concentrations exceeding applicable COGCC Table 915-1 Regulatory Limits Values presented with asterisk (*) contained concentrations exceeding COGCC Table 915-1 Protection of Groundwater Soil Screening Levels **Achievable practical quantitative limits for Hexavalent Chromium in soils is in the range of 0.1 to 1 mg/kg. ***Arsenic is naturally occurring in Colorado. The Local Clean-up Level (3.66 mg/kg) is 1.25*The background mean (2.93 mg/kg).												



ATTACHMENT A

Photo Log

Uhrich #14-29
API # 05-123-21811
Remediation # 22146

Closure Assessment

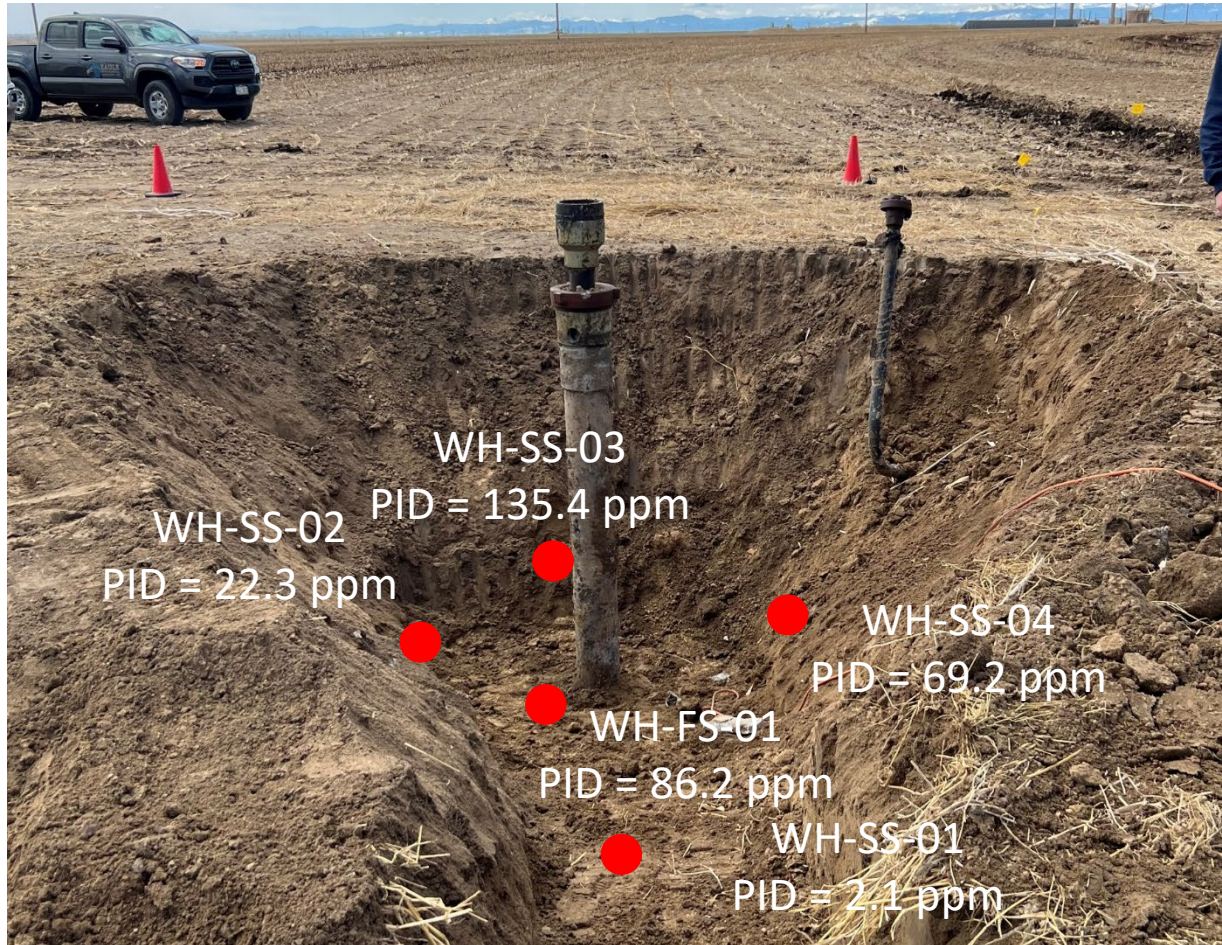
March 2022



EAGLE
ENVIRONMENTAL
CONSULTING, INC.
8000 W 44th Ave, Wheat Ridge, CO 80033
Ph: 303-433-0479 • F: 303-325-5449



Wellhead Excavation – 03/24/22

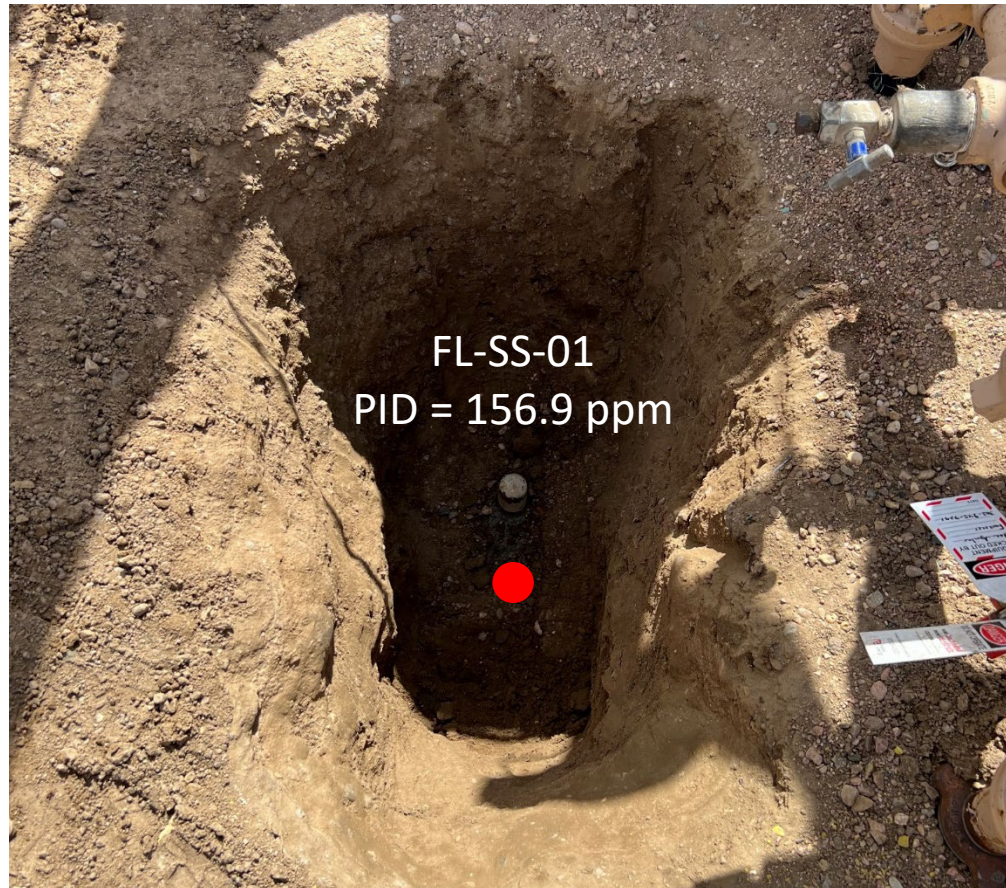


Looking southwest

Petroleum hydrocarbon odor observed throughout

No petroleum hydrocarbon staining observed

Wellhead Excavation – 03/24/22



Line abandoned in place

Pt. B (at separator) assessed

Petroleum hydrocarbon odor observed

No petroleum hydrocarbon staining observed



ATTACHMENT B

Laboratory Analytical Reports



April 14, 2022

Eagle Environmental Consulting, Inc.

Martin C Eckert III

8000 W 44th Ave

Wheat Ridge CO 80033

Project Name - Noble - Uhrich 14-29

Project Number - -

Attached are your analytical results for Noble - Uhrich 14-29 received by Origins Laboratory, Inc. March 24, 2022. This project is associated with Origins project number Y203626-01.

The analytical results in the following report were analyzed under the guidelines of EPA Methods. These methods are identified as follows; "SW" are defined in SW-846, "EPA" are defined in 40CFR part 136 and "SM" are defined in the most current revision of Standard Methods For the Examination of Water and Wastewater.

The analytical results apply specifically to the samples and analyses specified per the attached Chain of Custody. As such, this report shall not be reproduced except in full, without the written approval of Origin's laboratory.

Unless otherwise noted, the analytical results for all soil samples are reported on a wet weight basis. All analytical analyses were performed under NELAP guidelines unless noted by a data qualifier.

Any holding time exceedances, deviations from the method specifications or deviations from Origins Laboratory's Standard Operating Procedures are outlined in the case narrative.

Thank you for selecting Origins for your analytical needs. Please contact us with any questions concerning this report, or if we can help with anything at all.

Origins Laboratory, Inc.
303.433.1322
o-squad@oelabinc.com



Eagle Environmental Consulting, Inc.
8000 W 44th Ave
Wheat Ridge CO 80033

Martin C Eckert III
Project Number: -
Project: Noble - Uhrich 14-29

CROSS REFERENCE REPORT

Sample ID	Laboratory ID	Matrix	Date Sampled	Date Received
WH-SS-01@6'	Y203626-01	Soil	March 24, 2022 12:53	03/24/2022 16:46
WH-SS-02@6'	Y203626-02	Soil	March 24, 2022 12:55	03/24/2022 16:46
WH-SS-03@6'	Y203626-03	Soil	March 24, 2022 12:57	03/24/2022 16:46
WH-SS-04@6'	Y203626-04	Soil	March 24, 2022 12:59	03/24/2022 16:46
WH-FS-01@7'	Y203626-05	Soil	March 24, 2022 13:01	03/24/2022 16:46
FL-SS-01@4'	Y203626-06	Soil	March 24, 2022 13:30	03/24/2022 16:46

Chain of Custody Modification Request

On 4/6/2022, Andrew Newberry from Eagle Environmental contacted Jordan Bynon via email regarding Y203626 requesting that Table 915 metals be added to samples WH-SS-04@6' and WH-FS-01@7'.

Requested modifications to the chain of custody were made by Jordan Bynon on 4/6/2022.

Origins Laboratory, Inc.



The results in this report apply to the samples analyzed in accordance with the chain of custody document. This analytical report must be reproduced in its entirety.

Eagle Environmental Consulting, Inc.
 8000 W 44th Ave
 Wheat Ridge CO 80033

Martin C Eckert III
 Project Number: -
 Project: Noble - Uhrich 14-29

Origins Laboratory

F-012207-01-R1
Effective Date: 01/09/12

Sample Receipt Checklist

Origins Work Order: Y203676 Client: Eagle
 Client Project ID: Uhrich 14-29

Checklist Completed by: SG Shipped Via: HS
 Date/time completed: 3/25/12 (UPS, FedEx, Hand Delivered, Pick-up, etc.)
 Airbill #: N/A

Matrix(s) Received: (Check all that apply): Soil/Solid Water Other: _____


Cooler Number/Temperature: 1 / 4.9 °C _____ / _____ °C _____ / _____ °C _____ / _____ °C (Describe)

Thermometer ID: T004

Requirement Description	Yes	No	N/A	Comments (if any)
If samples require cooling, was the temperature between 0°C to ≤ 6°C ⁽¹⁾ ?	<input checked="" type="checkbox"/>			
Is there ice present (document if blue ice is used)	<input checked="" type="checkbox"/>			
Are custody seals present on cooler? (if so, document in comments if they are signed and dated, broken or intact)		<input checked="" type="checkbox"/>		
Are custody seals present on each sample container? (if so, document in comments if they are signed and dated, broken or intact)		<input checked="" type="checkbox"/>		
Were all samples received intact ⁽¹⁾ ?	<input checked="" type="checkbox"/>			
Was adequate sample volume provided ⁽¹⁾ ?	<input checked="" type="checkbox"/>			
Are short holding time analytes or samples with HTs due within 48 hours present ⁽¹⁾ ?		<input checked="" type="checkbox"/>		
Is a chain-of-custody (COC) present and filled out completely ⁽¹⁾ ?	<input checked="" type="checkbox"/>			
Does the COC agree with the number and type of sample bottles received ⁽¹⁾ ?	<input checked="" type="checkbox"/>			
Do the sample IDs on the bottle labels match the COC ⁽¹⁾ ?	<input checked="" type="checkbox"/>			
Is the COC properly relinquished by the client with date and time recorded ⁽¹⁾ ?	<input checked="" type="checkbox"/>			
For volatiles in water – is there headspace (> ¼ inch bubble) present? If yes, contact client and note in narrative.			<input checked="" type="checkbox"/>	
Are samples preserved that require preservation and was it checked ⁽¹⁾ ? (note ID of confirmation instrument used in comments) / (preservation is not confirmed for subcontracted analyses in order to insure sample integrity)(pH <2 for samples preserved with HNO3, HCL, H2SO4) / (pH >10 for samples preserved with NaAsO2+NaOH, ZnAc+NaOH)			<input checked="" type="checkbox"/>	
Additional Comments (if any):				

⁽¹⁾If NO, then contact the client before proceeding with analysis and note date/time and person contacted as well as the corrective action to in the additional comments (above) and the case narrative.

Reviewed by (Project Manager) [Signature] Date/Time Reviewed 3/28/12

Origins Laboratory, Inc.


The results in this report apply to the samples analyzed in accordance with the chain of custody document. This analytical report must be reproduced in its entirety.

Eagle Environmental Consulting, Inc.
 8000 W 44th Ave
 Wheat Ridge CO 80033

Martin C Eckert III
 Project Number: -
 Project: Noble - Uhrich 14-29

WH-SS-01@6'
3/24/2022 12:53:00PM

Analyte	Result	Min Detection Limit	Reporting Limit	Units	Dilution	Batch	Prepared	Analyzed	Notes
---------	--------	---------------------	-----------------	-------	----------	-------	----------	----------	-------

Origins Laboratory, Inc.
Y203626-01 (Soil)

Boron (DTPA Sorbitol)

Boron	1.01		0.0987	mg/L	1	B2C2801	03/28/2022	03/29/2022	
-------	------	--	--------	------	---	---------	------------	------------	--

DRO/ORO by EPA 8015D

Diesel (C10-C28)	ND		25.0	mg/kg	1	B2C2828	03/28/2022	03/30/2022	U
Residual Range Organics (C28-C40)	ND		100	"	"	"	"	"	U

Surrogate: o-Terphenyl	88.7 %		50-150			"	"	"	
------------------------	--------	--	--------	--	--	---	---	---	--

GBTEX+TMBs by 8260D

1,2,4-Trimethylbenzene	ND		0.00200	mg/kg	1	B2C3024	03/30/2022	04/02/2022	U
1,3,5-Trimethylbenzene	ND		0.00200	"	"	"	"	"	U
Benzene	ND		0.00200	"	"	"	"	"	U
Ethylbenzene	ND		0.00200	"	"	"	"	"	U
Toluene	ND		0.00200	"	"	"	"	"	U
Xylenes, total	ND		0.00200	"	"	"	"	"	U
Gasoline Range Hydrocarbons	ND		0.200	"	"	"	"	"	U

Surrogate: 1,2-Dichloroethane-d4	106 %		70-130			"	"	"	
----------------------------------	-------	--	--------	--	--	---	---	---	--

Origins Laboratory, Inc.



The results in this report apply to the samples analyzed in accordance with the chain of custody document. This analytical report must be reproduced in its entirety.

Eagle Environmental Consulting, Inc.
 8000 W 44th Ave
 Wheat Ridge CO 80033

Martin C Eckert III
 Project Number: -
 Project: Noble - Uhrich 14-29

WH-SS-01@6'

3/24/2022 12:53:00PM

Analyte	Result	Min Detection Limit	Reporting Limit	Units	Dilution	Batch	Prepared	Analyzed	Notes
---------	--------	---------------------	-----------------	-------	----------	-------	----------	----------	-------

Origins Laboratory, Inc.
Y203626-01 (Soil)

GBTEX+TMBs by 8260D

Surrogate: Toluene-d8	94.1 %		70-130			B2C30 24	03/30/2022	04/02/2022	
Surrogate: 4-Bromofluorobenzene	97.4 %		70-130			"	"	"	

Metals by Saturated Paste by EPA 6010

Calcium	7.86		0.499	meq/L	10	[CALC]	03/28/2022	03/29/2022	
Magnesium	4.75		0.823	"	"	"	"	"	
Sodium	4.39		0.435	"	"	"	"	"	

PAH by 8270D SIM

1-Methylnaphthalene	0.00322	0.000364	0.00067	mg/Kg	1	L607878	03/30/2022	03/31/2022	
2-Methylnaphthalene	0.00428	0.000645	0.00067	"	"	"	"	"	
Acenaphthene	0.000567	0.000304	0.00067	"	"	"	"	"	J
Anthracene	ND	0.000334	0.00067	"	"	"	"	"	
Benzo(a)anthracene	ND	0.000493	0.00067	"	"	"	"	"	
Benzo(a)pyrene	0.000536	0.000468	0.00067	"	"	"	"	"	J
Benzo(b)fluoranthene	0.000713	0.000585	0.00067	"	"	"	"	"	
Benzo(k)fluoranthene	ND	0.000437	0.00067	"	"	"	"	"	
Chrysene	0.000809	0.000624	0.00067	"	"	"	"	"	
Dibenz(a,h)anthracene	ND	0.000614	0.00067	"	"	"	"	"	
Fluoranthene	0.000781	0.000394	0.00067	"	"	"	"	"	
Fluorene	0.00133	0.000286	0.00067	"	"	"	"	"	

Origins Laboratory, Inc.



The results in this report apply to the samples analyzed in accordance with the chain of custody document. This analytical report must be reproduced in its entirety.

Eagle Environmental Consulting, Inc.
 8000 W 44th Ave
 Wheat Ridge CO 80033

Martin C Eckert III
 Project Number: -
 Project: Noble - Uhrich 14-29

WH-SS-01@6'

3/24/2022 12:53:00PM

Analyte	Result	Min Detection Limit	Reporting Limit	Units	Dilution	Batch	Prepared	Analyzed	Notes
---------	--------	---------------------	-----------------	-------	----------	-------	----------	----------	-------

Waypoint Analytical, Inc.
Y203626-01 (Soil)

PAH by 8270D SIM

Indeno(1,2,3-cd)pyrene	ND	0.000627	0.00067	mg/Kg	1	L607878	03/30/2022	03/31/2022	
Naphthalene	0.00114	0.000484	0.00067	"	"	"	"	"	
Pyrene	0.000926	0.000643	0.00067	"	"	"	"	"	

Surrogate: 2-Fluorobiphenyl	43.2 %		33-115			"	"	"	
Surrogate: 4-Terphenyl-d14	51.1 %		33-122			"	"	"	
Surrogate: Nitrobenzene-d5	47.7 %		29-110			"	"	"	

pH in Soil by 9045D

pH	7.68			pH Units	1	B2C2810	03/28/2022	03/29/2022	
----	-------------	--	--	----------	---	---------	------------	------------	--

SAR by 20B Saturated Paste

SAR	1.75			SAR	1	B2C2804	03/28/2022	03/29/2022	
-----	-------------	--	--	-----	---	---------	------------	------------	--

Specific Conductance Mod. 9050A

Specific Conductance (EC)	1.97		0.00500	mmhos/cm	1	B2C2807	03/28/2022	03/29/2022	
---------------------------	-------------	--	---------	----------	---	---------	------------	------------	--

Origins Laboratory, Inc.



The results in this report apply to the samples analyzed in accordance with the chain of custody document. This analytical report must be reproduced in its entirety.

Eagle Environmental Consulting, Inc.
 8000 W 44th Ave
 Wheat Ridge CO 80033

Martin C Eckert III
 Project Number: -
 Project: Noble - Uhrich 14-29

WH-SS-02@6'
3/24/2022 12:55:00PM

Analyte	Result	Min Detection Limit	Reporting Limit	Units	Dilution	Batch	Prepared	Analyzed	Notes
---------	--------	---------------------	-----------------	-------	----------	-------	----------	----------	-------

Origins Laboratory, Inc.
Y203626-02 (Soil)

Boron (DTPA Sorbitol)

Boron	0.893		0.0992	mg/L	1	B2C2801	03/28/2022	03/29/2022	
-------	-------	--	--------	------	---	---------	------------	------------	--

DRO/ORO by EPA 8015D

Diesel (C10-C28)	30.7		25.0	mg/kg	1	B2C2828	03/28/2022	03/30/2022	
Residual Range Organics (C28-C40)	ND		100	"	"	"	"	"	U

Surrogate: <i>o</i> -Terphenyl	94.5 %		50-150			"	"	"	
--------------------------------	--------	--	--------	--	--	---	---	---	--

GBTEX+TMBs by 8260D

1,2,4-Trimethylbenzene	ND		0.00200	mg/kg	1	B2C3024	03/30/2022	04/02/2022	U
1,3,5-Trimethylbenzene	0.00494		0.00200	"	"	"	"	"	
Benzene	ND		0.00200	"	"	"	"	"	U
Ethylbenzene	ND		0.00200	"	"	"	"	"	U
Toluene	ND		0.00200	"	"	"	"	"	U
Xylenes, total	ND		0.00200	"	"	"	"	"	U
Gasoline Range Hydrocarbons	ND		0.200	"	"	"	"	"	U

Surrogate: 1,2-Dichloroethane-d4	105 %		70-130			"	"	"	
Surrogate: Toluene-d8	93.8 %		70-130			"	"	"	

Origins Laboratory, Inc.



The results in this report apply to the samples analyzed in accordance with the chain of custody document. This analytical report must be reproduced in its entirety.

Eagle Environmental Consulting, Inc.
 8000 W 44th Ave
 Wheat Ridge CO 80033

Martin C Eckert III
 Project Number: -
 Project: Noble - Uhrich 14-29

WH-SS-02@6'

3/24/2022 12:55:00PM

Analyte	Result	Min Detection Limit	Reporting Limit	Units	Dilution	Batch	Prepared	Analyzed	Notes
---------	--------	---------------------	-----------------	-------	----------	-------	----------	----------	-------

Origins Laboratory, Inc.
Y203626-02 (Soil)

GBTEX+TMBs by 8260D

Surrogate: 4-Bromofluorobenzene 96.9 % 70-130 B2C30 24 03/30/2022 04/02/2022

Metals by Saturated Paste by EPA 6010


Calcium	7.12	0.499	meq/L	10	[CALC]	03/28/2022	03/29/2022
Magnesium	4.24	0.823	"	"	"	"	"
Sodium	3.45	0.435	"	"	"	"	"

PAH by 8270D SIM

1-Methylnaphthalene	0.00342	0.00182	0.00335	mg/Kg	5	L607990	03/31/2022	03/31/2022
2-Methylnaphthalene	ND	0.00323	0.00335	"	"	"	"	"
Acenaphthene	0.00668	0.00152	0.00335	"	"	"	"	"
Anthracene	ND	0.00167	0.00335	"	"	"	"	"
Benzo(a)anthracene	ND	0.00247	0.00335	"	"	"	"	"
Benzo(a)pyrene	ND	0.00234	0.00335	"	"	"	"	"
Benzo(b)fluoranthene	ND	0.00293	0.00335	"	"	"	"	"
Benzo(k)fluoranthene	ND	0.00219	0.00335	"	"	"	"	"
Chrysene	0.00331	0.00312	0.00335	"	"	"	"	"
Dibenz(a,h)anthracene	ND	0.00307	0.00335	"	"	"	"	"
Fluoranthene	ND	0.00197	0.00335	"	"	"	"	"
Fluorene	0.00997	0.00143	0.00335	"	"	"	"	"

J

Origins Laboratory, Inc.



The results in this report apply to the samples analyzed in accordance with the chain of custody document. This analytical report must be reproduced in its entirety.

Eagle Environmental Consulting, Inc.
 8000 W 44th Ave
 Wheat Ridge CO 80033

Martin C Eckert III
 Project Number: -
 Project: Noble - Uhrich 14-29

WH-SS-02@6'

3/24/2022 12:55:00PM

Analyte	Result	Min Detection Limit	Reporting Limit	Units	Dilution	Batch	Prepared	Analyzed	Notes
---------	--------	---------------------	-----------------	-------	----------	-------	----------	----------	-------

Waypoint Analytical, Inc.
Y203626-02 (Soil)

PAH by 8270D SIM

Indeno(1,2,3-cd)pyrene	ND	0.00314	0.00335	mg/Kg	5	L607990	03/31/2022	03/31/2022	
Naphthalene	ND	0.00242	0.00335	"	"	"	"	"	
Pyrene	ND	0.00322	0.00335	"	"	"	"	"	

Surrogate: 2-Fluorobiphenyl	48.9 %		33-115			"	"	"	
Surrogate: 4-Terphenyl-d14	58.9 %		33-122			"	"	"	
Surrogate: Nitrobenzene-d5	55.3 %		29-110			"	"	"	

pH in Soil by 9045D

pH	7.52			pH Units	1	B2C2810	03/28/2022	03/29/2022	
----	------	--	--	----------	---	---------	------------	------------	--

SAR by 20B Saturated Paste

SAR	1.45			SAR	1	B2C2804	03/28/2022	03/29/2022	
-----	------	--	--	-----	---	---------	------------	------------	--

Specific Conductance Mod. 9050A

Specific Conductance (EC)	1.75		0.00500	mmhos/cm	1	B2C2807	03/28/2022	03/29/2022	
---------------------------	------	--	---------	----------	---	---------	------------	------------	--

Origins Laboratory, Inc.



The results in this report apply to the samples analyzed in accordance with the chain of custody document. This analytical report must be reproduced in its entirety.

Eagle Environmental Consulting, Inc.
 8000 W 44th Ave
 Wheat Ridge CO 80033

Martin C Eckert III
 Project Number: -
 Project: Noble - Uhrich 14-29

WH-SS-03@6'

3/24/2022 12:57:00PM

Analyte	Result	Min Detection Limit	Reporting Limit	Units	Dilution	Batch	Prepared	Analyzed	Notes
---------	--------	---------------------	-----------------	-------	----------	-------	----------	----------	-------

Origins Laboratory, Inc.
Y203626-03 (Soil)

Boron (DTPA Sorbitol)

Boron	0.421		0.100	mg/L	1	B2C2801	03/28/2022	03/29/2022	
-------	-------	--	-------	------	---	---------	------------	------------	--

DRO/ORO by EPA 8015D

Diesel (C10-C28)	234		25.0	mg/kg	1	B2C2828	03/28/2022	03/30/2022	
Residual Range Organics (C28-C40)	147		100	"	"	"	"	"	

Surrogate: o-Terphenyl	96.8 %		50-150			"	"	"	
------------------------	--------	--	--------	--	--	---	---	---	--

GBTEX+TMBs by 8260D

1,2,4-Trimethylbenzene	0.0104		0.00200	mg/kg	1	B2C3024	03/30/2022	04/02/2022	
1,3,5-Trimethylbenzene	0.0335		0.00200	"	"	"	"	"	
Benzene	ND		0.00200	"	"	"	"	"	U
Ethylbenzene	ND		0.00200	"	"	"	"	"	U
Toluene	ND		0.00200	"	"	"	"	"	U
Xylenes, total	ND		0.00200	"	"	"	"	"	U
Gasoline Range Hydrocarbons	2.11		0.200	"	"	"	"	"	

Surrogate: 1,2-Dichloroethane-d4	104 %		70-130			"	"	"	
----------------------------------	-------	--	--------	--	--	---	---	---	--

Surrogate: Toluene-d8	94.5 %		70-130			"	"	"	
-----------------------	--------	--	--------	--	--	---	---	---	--

Origins Laboratory, Inc.



The results in this report apply to the samples analyzed in accordance with the chain of custody document. This analytical report must be reproduced in its entirety.

Eagle Environmental Consulting, Inc.
 8000 W 44th Ave
 Wheat Ridge CO 80033

Martin C Eckert III
 Project Number: -
 Project: Noble - Uhrich 14-29

WH-SS-03@6'

3/24/2022 12:57:00PM

Analyte	Result	Min Detection Limit	Reporting Limit	Units	Dilution	Batch	Prepared	Analyzed	Notes
---------	--------	---------------------	-----------------	-------	----------	-------	----------	----------	-------

Origins Laboratory, Inc.
Y203626-03 (Soil)

GBTEX+TMBs by 8260D

Surrogate: 4-Bromofluorobenzene	101 %		70-130			B2C30 24	03/30/2022	04/02/2022	
---------------------------------	-------	--	--------	--	--	-------------	------------	------------	--

Metals by Saturated Paste by EPA 6010

Calcium	3.32		0.499	meq/L	10	[CALC]	03/28/2022	03/29/2022	
Magnesium	2.01		0.823	"	"	"	"	"	
Sodium	2.25		0.435	"	"	"	"	"	

PAH by 8270D SIM

1-Methylnaphthalene	0.1	0.00182	0.00335	mg/Kg	5	L607990	03/31/2022	03/31/2022	
2-Methylnaphthalene	0.019	0.00323	0.00335	"	"	"	"	"	
Acenaphthene	0.0226	0.00152	0.00335	"	"	"	"	"	
Anthracene	0.00353	0.00167	0.00335	"	"	"	"	"	
Benzo(a)anthracene	0.00257	0.00247	0.00335	"	"	"	"	"	J
Benzo(a)pyrene	ND	0.00234	0.00335	"	"	"	"	"	
Benzo(b)fluoranthene	ND	0.00293	0.00335	"	"	"	"	"	
Benzo(k)fluoranthene	ND	0.00219	0.00335	"	"	"	"	"	
Chrysene	0.0111	0.00312	0.00335	"	"	"	"	"	
Dibenz(a,h)anthracene	ND	0.00307	0.00335	"	"	"	"	"	
Fluoranthene	0.00338	0.00197	0.00335	"	"	"	"	"	
Fluorene	0.0642	0.00143	0.00335	"	"	"	"	"	
Indeno(1,2,3-cd)pyrene	ND	0.00314	0.00335	"	"	"	"	"	

Origins Laboratory, Inc.



The results in this report apply to the samples analyzed in accordance with the chain of custody document. This analytical report must be reproduced in its entirety.

Eagle Environmental Consulting, Inc.
 8000 W 44th Ave
 Wheat Ridge CO 80033

Martin C Eckert III
 Project Number: -
 Project: Noble - Uhrich 14-29

WH-SS-03@6'
3/24/2022 12:57:00PM

Analyte	Result	Min Detection Limit	Reporting Limit	Units	Dilution	Batch	Prepared	Analyzed	Notes
---------	--------	---------------------	-----------------	-------	----------	-------	----------	----------	-------

Waypoint Analytical, Inc.
Y203626-03 (Soil)

PAH by 8270D SIM

Naphthalene	0.00581	0.00242	0.00335	mg/Kg	5	L607990	03/31/2022	03/31/2022	
Pyrene	0.0078	0.00322	0.00335	"	"	"	"	"	

Surrogate: 2-Fluorobiphenyl	47.7 %		33-115			"	"	"	
Surrogate: 4-Terphenyl-d14	60.2 %		33-122			"	"	"	
Surrogate: Nitrobenzene-d5	51.7 %		29-110			"	"	"	

pH in Soil by 9045D

pH	7.48			pH Units	1	B2C2810	03/28/2022	03/29/2022	
----	------	--	--	----------	---	---------	------------	------------	--

SAR by 20B Saturated Paste

SAR	1.38			SAR	1	B2C2804	03/28/2022	03/29/2022	
-----	------	--	--	-----	---	---------	------------	------------	--

Specific Conductance Mod. 9050A

Specific Conductance (EC)	1.00		0.00500	mmhos/cm	1	B2C2807	03/28/2022	03/29/2022	
---------------------------	------	--	---------	----------	---	---------	------------	------------	--

Total Metals by 6020B

Arsenic	3.66	0.0855	0.25	mg/Kg	5	L607553	03/29/2022	03/31/2022	
Barium	59.7	0.042	0.25	"	"	"	"	"	
Cadmium	0.151	0.0259	0.25	"	"	"	"	"	J

Origins Laboratory, Inc.



The results in this report apply to the samples analyzed in accordance with the chain of custody document. This analytical report must be reproduced in its entirety.

Eagle Environmental Consulting, Inc.
 8000 W 44th Ave
 Wheat Ridge CO 80033

Martin C Eckert III
 Project Number: -
 Project: Noble - Uhrich 14-29

WH-SS-03@6'

3/24/2022 12:57:00PM

Analyte	Result	Min Detection Limit	Reporting Limit	Units	Dilution	Batch	Prepared	Analyzed	Notes
---------	--------	---------------------	-----------------	-------	----------	-------	----------	----------	-------

Waypoint Analytical, Inc.
Y203626-03 (Soil)

Total Metals by 6020B

Copper	8.11	0.0806	0.25	mg/Kg	5	L607553	03/29/2022	03/31/2022	
Lead	17.1	0.031	0.25	"	"	"	"	"	
Nickel	8.27	0.0633	0.25	"	"	"	"	"	
Selenium	0.509	0.103	0.25	"	"	"	"	"	
Silver	0.0447	0.0067	0.25	"	"	"	"	"	J
Zinc	35.4	0.534	2.5	"	"	"	"	"	

Total Metals by 7196A

Chromium, Hexavalent	ND	0.244	0.5	mg/Kg	1	L608319	03/24/2022	04/01/2022	
----------------------	----	-------	-----	-------	---	---------	------------	------------	--

Origins Laboratory, Inc.



The results in this report apply to the samples analyzed in accordance with the chain of custody document. This analytical report must be reproduced in its entirety.

Eagle Environmental Consulting, Inc.
 8000 W 44th Ave
 Wheat Ridge CO 80033

Martin C Eckert III
 Project Number: -
 Project: Noble - Uhrich 14-29

WH-SS-04@6'

3/24/2022 12:59:00PM

Analyte	Result	Min Detection Limit	Reporting Limit	Units	Dilution	Batch	Prepared	Analyzed	Notes
---------	--------	---------------------	-----------------	-------	----------	-------	----------	----------	-------

Origins Laboratory, Inc.
Y203626-04 (Soil)

Boron (DTPA Sorbitol)

Boron	0.737		0.0996	mg/L	1	B2C2801	03/28/2022	03/29/2022	
-------	-------	--	--------	------	---	---------	------------	------------	--

DRO/ORO by EPA 8015D

Diesel (C10-C28)	ND		25.0	mg/kg	1	B2C2828	03/28/2022	03/30/2022	U
Residual Range Organics (C28-C40)	ND		100	"	"	"	"	"	U

Surrogate: <i>o</i> -Terphenyl	91.7 %		50-150			"	"	"	
--------------------------------	--------	--	--------	--	--	---	---	---	--

GBTEX+TMBs by 8260D

1,2,4-Trimethylbenzene	ND		0.00200	mg/kg	1	B2C3024	03/30/2022	04/02/2022	U
1,3,5-Trimethylbenzene	0.00960		0.00200	"	"	"	"	"	
Benzene	ND		0.00200	"	"	"	"	"	U
Ethylbenzene	ND		0.00200	"	"	"	"	"	U
Toluene	ND		0.00200	"	"	"	"	"	U
Xylenes, total	ND		0.00200	"	"	"	"	"	U
Gasoline Range Hydrocarbons	ND		0.200	"	"	"	"	"	U

Surrogate: 1,2-Dichloroethane-d4	106 %		70-130			"	"	"	
Surrogate: Toluene-d8	94.6 %		70-130			"	"	"	

Origins Laboratory, Inc.



The results in this report apply to the samples analyzed in accordance with the chain of custody document. This analytical report must be reproduced in its entirety.

Eagle Environmental Consulting, Inc.
 8000 W 44th Ave
 Wheat Ridge CO 80033

Martin C Eckert III
 Project Number: -
 Project: Noble - Uhrich 14-29

WH-SS-04@6'

3/24/2022 12:59:00PM

Analyte	Result	Min Detection Limit	Reporting Limit	Units	Dilution	Batch	Prepared	Analyzed	Notes
---------	--------	---------------------	-----------------	-------	----------	-------	----------	----------	-------

Origins Laboratory, Inc.
Y203626-04 (Soil)

GBTEX+TMBs by 8260D

Surrogate: 4-Bromofluorobenzene	96.9 %		70-130			B2C30 24	03/30/2022	04/02/2022	
---------------------------------	--------	--	--------	--	--	-------------	------------	------------	--

Metals by Saturated Paste by EPA 6010

Calcium	4.73		0.499	meq/L	10	[CALC]	03/28/2022	03/29/2022	
Magnesium	4.31		0.823	"	"	"	"	"	
Sodium	2.62		0.435	"	"	"	"	"	

PAH by 8270D SIM

1-Methylnaphthalene	0.00171	0.000364	0.00067	mg/Kg	1	L607990	03/31/2022	03/31/2022	
2-Methylnaphthalene	0.00232	0.000645	0.00067	"	"	"	"	"	
Acenaphthene	0.000397	0.000304	0.00067	"	"	"	"	"	J
Anthracene	ND	0.000334	0.00067	"	"	"	"	"	
Benzo(a)anthracene	0.00101	0.000493	0.00067	"	"	"	"	"	
Benzo(a)pyrene	0.000971	0.000468	0.00067	"	"	"	"	"	
Benzo(b)fluoranthene	0.00178	0.000585	0.00067	"	"	"	"	"	
Benzo(k)fluoranthene	0.00148	0.000437	0.00067	"	"	"	"	"	
Chrysene	0.00155	0.000624	0.00067	"	"	"	"	"	
Dibenz(a,h)anthracene	0.00163	0.000614	0.00067	"	"	"	"	"	
Fluoranthene	0.000504	0.000394	0.00067	"	"	"	"	"	J
Fluorene	0.000613	0.000286	0.00067	"	"	"	"	"	J
Indeno(1,2,3-cd)pyrene	0.00193	0.000627	0.00067	"	"	"	"	"	

Origins Laboratory, Inc.



The results in this report apply to the samples analyzed in accordance with the chain of custody document. This analytical report must be reproduced in its entirety.

Eagle Environmental Consulting, Inc.
 8000 W 44th Ave
 Wheat Ridge CO 80033

Martin C Eckert III
 Project Number: -
 Project: Noble - Uhrich 14-29

WH-SS-04@6'

3/24/2022 12:59:00PM

Analyte	Result	Min Detection Limit	Reporting Limit	Units	Dilution	Batch	Prepared	Analyzed	Notes
---------	--------	---------------------	-----------------	-------	----------	-------	----------	----------	-------

Waypoint Analytical, Inc.
Y203626-04 (Soil)

PAH by 8270D SIM

Naphthalene	ND	0.000484	0.00067	mg/Kg	1	L607990	03/31/2022	03/31/2022	
Pyrene	ND	0.000643	0.00067	"	"	"	"	"	

Surrogate: 2-Fluorobiphenyl	48.8 %		33-115			"	"	"	
Surrogate: 4-Terphenyl-d14	58.7 %		33-122			"	"	"	
Surrogate: Nitrobenzene-d5	54.8 %		29-110			"	"	"	

pH in Soil by 9045D

pH	7.78			pH Units	1	B2C2810	03/28/2022	03/29/2022	
----	------	--	--	----------	---	---------	------------	------------	--

SAR by 20B Saturated Paste

SAR	1.23			SAR	1	B2C2804	03/28/2022	03/29/2022	
-----	------	--	--	-----	---	---------	------------	------------	--

Specific Conductance Mod. 9050A

Specific Conductance (EC)	1.55		0.00500	mmhos/cm	1	B2C2807	03/28/2022	03/29/2022	
---------------------------	------	--	---------	----------	---	---------	------------	------------	--

Total Metals by 6020B

Arsenic	3.36	0.0855	0.25	mg/Kg	5	L609411	04/07/2022	04/11/2022	
Barium	103	0.042	0.25	"	"	"	"	"	
Cadmium	0.11	0.0259	0.25	"	"	"	"	"	J

Origins Laboratory, Inc.



The results in this report apply to the samples analyzed in accordance with the chain of custody document. This analytical report must be reproduced in its entirety.

Eagle Environmental Consulting, Inc.
 8000 W 44th Ave
 Wheat Ridge CO 80033

Martin C Eckert III
 Project Number: -
 Project: Noble - Uhrich 14-29

WH-SS-04@6'

3/24/2022 12:59:00PM

Analyte	Result	Min Detection Limit	Reporting Limit	Units	Dilution	Batch	Prepared	Analyzed	Notes
---------	--------	---------------------	-----------------	-------	----------	-------	----------	----------	-------

Waypoint Analytical, LLC.
Y203626-04 (Soil)

Total Metals by 6020B

Copper	8.39	0.0806	0.25	mg/Kg	5	L609411	04/07/2022	04/11/2022	
Lead	8.7	0.031	0.25	"	"	"	"	"	
Nickel	7.9	0.0633	0.25	"	"	"	"	"	
Selenium	0.328	0.103	0.25	"	"	"	"	"	
Silver	0.0969	0.0067	0.25	"	"	"	"	"	J
Zinc	38.1	0.534	2.5	"	"	"	"	"	

Total Metals by 7196A

Chromium, Hexavalent	ND	0.253	0.52	mg/Kg	1	L610021	03/24/2022	04/11/2022	
----------------------	----	-------	------	-------	---	---------	------------	------------	--

Origins Laboratory, Inc.



The results in this report apply to the samples analyzed in accordance with the chain of custody document. This analytical report must be reproduced in its entirety.

Eagle Environmental Consulting, Inc.
 8000 W 44th Ave
 Wheat Ridge CO 80033

Martin C Eckert III
 Project Number: -
 Project: Noble - Uhrich 14-29

WH-FS-01@7'
3/24/2022 1:01:00PM

Analyte	Result	Min Detection Limit	Reporting Limit	Units	Dilution	Batch	Prepared	Analyzed	Notes
---------	--------	---------------------	-----------------	-------	----------	-------	----------	----------	-------

Origins Laboratory, Inc.
Y203626-05 (Soil)

Boron (DTPA Sorbitol)

Boron	0.790		0.0987	mg/L	1	B2C2801	03/28/2022	03/29/2022	
-------	-------	--	--------	------	---	---------	------------	------------	--

DRO/ORO by EPA 8015D

Diesel (C10-C28)	40.8		25.0	mg/kg	1	B2C2828	03/28/2022	03/30/2022	
Residual Range Organics (C28-C40)	ND		100	"	"	"	"	"	U

Surrogate: o-Terphenyl	93.8 %		50-150			"	"	"	
------------------------	--------	--	--------	--	--	---	---	---	--

GBTEX+TMBs by 8260D

1,2,4-Trimethylbenzene	0.00524		0.00200	mg/kg	1	B2C3024	03/30/2022	04/02/2022	
1,3,5-Trimethylbenzene	0.0100		0.00200	"	"	"	"	"	
Benzene	ND		0.00200	"	"	"	"	"	U
Ethylbenzene	ND		0.00200	"	"	"	"	"	U
Toluene	ND		0.00200	"	"	"	"	"	U
Xylenes, total	ND		0.00200	"	"	"	"	"	U
Gasoline Range Hydrocarbons	0.416		0.200	"	"	"	"	"	

Surrogate: 1,2-Dichloroethane-d4	106 %		70-130			"	"	"	
Surrogate: Toluene-d8	94.2 %		70-130			"	"	"	

Origins Laboratory, Inc.



The results in this report apply to the samples analyzed in accordance with the chain of custody document. This analytical report must be reproduced in its entirety.

Eagle Environmental Consulting, Inc.
 8000 W 44th Ave
 Wheat Ridge CO 80033

Martin C Eckert III
 Project Number: -
 Project: Noble - Uhrich 14-29

WH-FS-01@7'
3/24/2022 1:01:00PM

Analyte	Result	Min Detection Limit	Reporting Limit	Units	Dilution	Batch	Prepared	Analyzed	Notes
---------	--------	---------------------	-----------------	-------	----------	-------	----------	----------	-------

Origins Laboratory, Inc.
Y203626-05 (Soil)

GBTEX+TMBs by 8260D

Surrogate: 4-Bromofluorobenzene	96.7 %		70-130			B2C30 24	03/30/2022	04/02/2022	
---------------------------------	--------	--	--------	--	--	-------------	------------	------------	--

Metals by Saturated Paste by EPA 6010

Calcium	5.79		0.499	meq/L	10	[CALC]	03/28/2022	03/29/2022	
Magnesium	3.23		0.823	"	"	"	"	"	
Sodium	2.88		0.435	"	"	"	"	"	

PAH by 8270D SIM

1-Methylnaphthalene	0.0895	0.00182	0.00335	mg/Kg	5	L607990	03/31/2022	03/31/2022	
2-Methylnaphthalene	0.0122	0.00323	0.00335	"	"	"	"	"	
Acenaphthene	0.0193	0.00152	0.00335	"	"	"	"	"	
Anthracene	0.00279	0.00167	0.00335	"	"	"	"	"	J
Benzo(a)anthracene	ND	0.00247	0.00335	"	"	"	"	"	
Benzo(a)pyrene	ND	0.00234	0.00335	"	"	"	"	"	
Benzo(b)fluoranthene	ND	0.00293	0.00335	"	"	"	"	"	
Benzo(k)fluoranthene	ND	0.00219	0.00335	"	"	"	"	"	
Chrysene	0.00962	0.00312	0.00335	"	"	"	"	"	
Dibenz(a,h)anthracene	ND	0.00307	0.00335	"	"	"	"	"	
Fluoranthene	0.0033	0.00197	0.00335	"	"	"	"	"	J
Fluorene	0.0493	0.00143	0.00335	"	"	"	"	"	
Indeno(1,2,3-cd)pyrene	ND	0.00314	0.00335	"	"	"	"	"	

Origins Laboratory, Inc.



The results in this report apply to the samples analyzed in accordance with the chain of custody document. This analytical report must be reproduced in its entirety.

Eagle Environmental Consulting, Inc.
 8000 W 44th Ave
 Wheat Ridge CO 80033

Martin C Eckert III
 Project Number: -
 Project: Noble - Uhrich 14-29

WH-FS-01@7'
3/24/2022 1:01:00PM

Analyte	Result	Min Detection Limit	Reporting Limit	Units	Dilution	Batch	Prepared	Analyzed	Notes
---------	--------	---------------------	-----------------	-------	----------	-------	----------	----------	-------

Waypoint Analytical, Inc.
Y203626-05 (Soil)

PAH by 8270D SIM

Naphthalene	0.0063	0.00242	0.00335	mg/Kg	5	L607990	03/31/2022	03/31/2022	
Pyrene	0.00674	0.00322	0.00335	"	"	"	"	"	

Surrogate: 2-Fluorobiphenyl	48.5 %		33-115			"	"	"	
Surrogate: 4-Terphenyl-d14	60.5 %		33-122			"	"	"	
Surrogate: Nitrobenzene-d5	48.5 %		29-110			"	"	"	

pH in Soil by 9045D

pH	7.50			pH Units	1	B2C2810	03/28/2022	03/29/2022	
----	------	--	--	----------	---	---------	------------	------------	--

SAR by 20B Saturated Paste

SAR	1.36			SAR	1	B2C2804	03/28/2022	03/29/2022	
-----	------	--	--	-----	---	---------	------------	------------	--

Specific Conductance Mod. 9050A

Specific Conductance (EC)	1.50		0.00500	mmhos/cm	1	B2C2807	03/28/2022	03/29/2022	
---------------------------	------	--	---------	----------	---	---------	------------	------------	--

Total Metals by 6020B

Arsenic	3.04	0.0855	0.25	mg/Kg	5	L609411	04/07/2022	04/11/2022	
Barium	99.3	0.042	0.25	"	"	"	"	"	
Cadmium	0.12	0.0259	0.25	"	"	"	"	"	J

Origins Laboratory, Inc.



The results in this report apply to the samples analyzed in accordance with the chain of custody document. This analytical report must be reproduced in its entirety.

Eagle Environmental Consulting, Inc.
 8000 W 44th Ave
 Wheat Ridge CO 80033

Martin C Eckert III
 Project Number: -
 Project: Noble - Uhrich 14-29

WH-FS-01@7'

3/24/2022 1:01:00PM

Analyte	Result	Min Detection Limit	Reporting Limit	Units	Dilution	Batch	Prepared	Analyzed	Notes
---------	--------	---------------------	-----------------	-------	----------	-------	----------	----------	-------

Waypoint Analytical, LLC.
Y203626-05 (Soil)

Total Metals by 6020B

Copper	11.7	0.0806	0.25	mg/Kg	5	L609411	04/07/2022	04/11/2022	
Lead	15	0.031	0.25	"	"	"	"	"	
Nickel	8.34	0.0633	0.25	"	"	"	"	"	
Selenium	0.383	0.103	0.25	"	"	"	"	"	
Silver	0.133	0.0067	0.25	"	"	"	"	"	J
Zinc	46.9	0.534	2.5	"	"	"	"	"	

Total Metals by 7196A

Chromium, Hexavalent	ND	0.492	1.01	mg/Kg	2	L610021	03/24/2022	04/11/2022	
----------------------	----	-------	------	-------	---	---------	------------	------------	--

Origins Laboratory, Inc.



The results in this report apply to the samples analyzed in accordance with the chain of custody document. This analytical report must be reproduced in its entirety.

Eagle Environmental Consulting, Inc.
 8000 W 44th Ave
 Wheat Ridge CO 80033

Martin C Eckert III
 Project Number: -
 Project: Noble - Uhrich 14-29

FL-SS-01@4'
3/24/2022 1:30:00PM

Analyte	Result	Min Detection Limit	Reporting Limit	Units	Dilution	Batch	Prepared	Analyzed	Notes
---------	--------	---------------------	-----------------	-------	----------	-------	----------	----------	-------

Origins Laboratory, Inc.
Y203626-06 (Soil)

Boron (DTPA Sorbitol)

Boron	0.139		0.0991	mg/L	1	B2C2801	03/28/2022	03/29/2022	
-------	-------	--	--------	------	---	---------	------------	------------	--

DRO/ORO by EPA 8015D

Diesel (C10-C28)	31.4		25.0	mg/kg	1	B2C2828	03/28/2022	03/30/2022	
Residual Range Organics (C28-C40)	ND		100	"	"	"	"	"	U

Surrogate: <i>o</i> -Terphenyl	90.0 %		50-150			"	"	"	
--------------------------------	--------	--	--------	--	--	---	---	---	--

GBTEX+TMBs by 8260D

1,2,4-Trimethylbenzene	0.00368		0.00200	mg/kg	1	B2C3024	03/30/2022	04/02/2022	
1,3,5-Trimethylbenzene	0.0231		0.00200	"	"	"	"	"	
Benzene	ND		0.00200	"	"	"	"	"	U
Ethylbenzene	ND		0.00200	"	"	"	"	"	U
Toluene	ND		0.00200	"	"	"	"	"	U
Xylenes, total	ND		0.00200	"	"	"	"	"	U
Gasoline Range Hydrocarbons	1.81		0.200	"	"	"	"	"	

Surrogate: 1,2-Dichloroethane-d4	104 %		70-130			"	"	"	
Surrogate: Toluene-d8	94.9 %		70-130			"	"	"	

Origins Laboratory, Inc.



The results in this report apply to the samples analyzed in accordance with the chain of custody document. This analytical report must be reproduced in its entirety.

Eagle Environmental Consulting, Inc.
 8000 W 44th Ave
 Wheat Ridge CO 80033

Martin C Eckert III
 Project Number: -
 Project: Noble - Uhrich 14-29

FL-SS-01@4'
3/24/2022 1:30:00PM

Analyte	Result	Min Detection Limit	Reporting Limit	Units	Dilution	Batch	Prepared	Analyzed	Notes
---------	--------	---------------------	-----------------	-------	----------	-------	----------	----------	-------

Origins Laboratory, Inc.
Y203626-06 (Soil)

GBTEX+TMBs by 8260D

Surrogate: 4-Bromofluorobenzene	99.0 %		70-130			B2C30 24	03/30/2022	04/02/2022	
---------------------------------	--------	--	--------	--	--	-------------	------------	------------	--

Metals by Saturated Paste by EPA 6010

Calcium	1.87		0.499	meq/L	10	[CALC]	03/28/2022	03/29/2022	
Magnesium	ND		0.823	"	"	"	"	"	
Sodium	ND		0.435	"	"	"	"	"	

PAH by 8270D SIM

1-Methylnaphthalene	0.00484	0.000364	0.00067	mg/Kg	1	L607990	03/31/2022	03/31/2022	
2-Methylnaphthalene	0.00301	0.000645	0.00067	"	"	"	"	"	
Acenaphthene	0.00129	0.000304	0.00067	"	"	"	"	"	
Anthracene	ND	0.000334	0.00067	"	"	"	"	"	
Benzo(a)anthracene	ND	0.000493	0.00067	"	"	"	"	"	
Benzo(a)pyrene	ND	0.000468	0.00067	"	"	"	"	"	
Benzo(b)fluoranthene	ND	0.000585	0.00067	"	"	"	"	"	
Benzo(k)fluoranthene	ND	0.000437	0.00067	"	"	"	"	"	
Chrysene	0.000772	0.000624	0.00067	"	"	"	"	"	
Dibenz(a,h)anthracene	ND	0.000614	0.00067	"	"	"	"	"	
Fluoranthene	ND	0.000394	0.00067	"	"	"	"	"	
Fluorene	0.0027	0.000286	0.00067	"	"	"	"	"	

Origins Laboratory, Inc.



The results in this report apply to the samples analyzed in accordance with the chain of custody document. This analytical report must be reproduced in its entirety.

Eagle Environmental Consulting, Inc.
 8000 W 44th Ave
 Wheat Ridge CO 80033

Martin C Eckert III
 Project Number: -
 Project: Noble - Uhrich 14-29

FL-SS-01@4'
3/24/2022 1:30:00PM

Analyte	Result	Min Detection Limit	Reporting Limit	Units	Dilution	Batch	Prepared	Analyzed	Notes
---------	--------	---------------------	-----------------	-------	----------	-------	----------	----------	-------

Waypoint Analytical, Inc.
Y203626-06 (Soil)

PAH by 8270D SIM

Indeno(1,2,3-cd)pyrene	ND	0.000627	0.00067	mg/Kg	1	L607990	03/31/2022	03/31/2022	
Naphthalene	0.000744	0.000484	0.00067	"	"	"	"	"	
Pyrene	0.000699	0.000643	0.00067	"	"	"	"	"	

Surrogate: 2-Fluorobiphenyl	48 %		33-115			"	"	"	
Surrogate: 4-Terphenyl-d14	60.4 %		33-122			"	"	"	
Surrogate: Nitrobenzene-d5	53.5 %		29-110			"	"	"	

pH in Soil by 9045D

pH	8.06			pH Units	1	B2C2810	03/28/2022	03/29/2022	
----	-------------	--	--	----------	---	---------	------------	------------	--

SAR by 20B Saturated Paste

SAR	0.348			SAR	1	B2C2804	03/28/2022	03/29/2022	
-----	--------------	--	--	-----	---	---------	------------	------------	--

Specific Conductance Mod. 9050A

Specific Conductance (EC)	0.337		0.00500	mmhos/cm	1	B2C2807	03/28/2022	03/29/2022	
---------------------------	--------------	--	---------	----------	---	---------	------------	------------	--

Total Metals by 7196A

Chromium, Hexavalent	ND	0.247	0.508	mg/Kg	1	L608321	03/24/2022	04/01/2022	
----------------------	----	-------	-------	-------	---	---------	------------	------------	--

Origins Laboratory, Inc.



The results in this report apply to the samples analyzed in accordance with the chain of custody document. This analytical report must be reproduced in its entirety.

Eagle Environmental Consulting, Inc.
8000 W 44th Ave
Wheat Ridge CO 80033

Martin C Eckert III
Project Number: -
Project: Noble - Uhrich 14-29

FL-SS-01@4'

3/24/2022 1:30:00PM

Analyte	Result	Min Detection Limit	Reporting Limit	Units	Dilution	Batch	Prepared	Analyzed	Notes
---------	--------	---------------------	-----------------	-------	----------	-------	----------	----------	-------

Waypoint Analytical, Inc.
Y203626-06 (Soil)

Total Metals by 6020B

Arsenic	2.35	0.0855	0.25	mg/Kg	5	L607553	03/29/2022	03/31/2022	
Barium	75.2	0.042	0.25	"	"	"	"	"	
Cadmium	0.227	0.0259	0.25	"	"	"	"	"	J
Copper	5.82	0.0806	0.25	"	"	"	"	"	
Lead	5.64	0.031	0.25	"	"	"	"	"	
Nickel	5.55	0.0633	0.25	"	"	"	"	"	
Selenium	0.385	0.103	0.25	"	"	"	"	"	
Silver	0.0365	0.0067	0.25	"	"	"	"	"	J
Zinc	26.4	0.534	2.5	"	"	"	"	"	

Origins Laboratory, Inc.



The results in this report apply to the samples analyzed in accordance with the chain of custody document. This analytical report must be reproduced in its entirety.

Eagle Environmental Consulting, Inc.
 8000 W 44th Ave
 Wheat Ridge CO 80033

Martin C Eckert III
 Project Number: -
 Project: Noble - Uhrich 14-29

Extractable Petroleum Hydrocarbons by 8015D - Quality Control
Origins Laboratory, Inc.

Analyte	Result	Reporting Limit	Units	Spike Level	Source Result	%REC	%REC Limits	RPD	RPD Limit	Notes
Batch B2C2828 - EPA 3550B										
Blank (B2C2828-BLK1)										
					Prepared: 03/28/2022 Analyzed: 03/30/2022					
Diesel (C10-C28)	ND	25.0	mg/kg							U
Residual Range Organics (C28-C40)	ND	100	"							U
Surrogate: o-Terphenyl	24		"	24.9		97.4	50-150			

Origins Laboratory, Inc.



The results in this report apply to the samples analyzed in accordance with the chain of custody document. This analytical report must be reproduced in its entirety.

Eagle Environmental Consulting, Inc.
 8000 W 44th Ave
 Wheat Ridge CO 80033

Martin C Eckert III
 Project Number: -
 Project: Noble - Uhrich 14-29

Extractable Petroleum Hydrocarbons by 8015D - Quality Control
Origins Laboratory, Inc.

Analyte	Result	Reporting Limit	Units	Spike Level	Source Result	%REC	%REC Limits	RPD	RPD Limit	Notes
---------	--------	-----------------	-------	-------------	---------------	------	-------------	-----	-----------	-------

Batch B2C2828 - EPA 3550B

LCS (B2C2828-BS1)

Prepared: 03/28/2022 Analyzed: 03/30/2022

Diesel (C10-C28)	857	50.0	mg/kg	1000		85.7	70-130			
Residual Range Organics (C28-C40)	912	200	"	1000		91.2	70-130			
Surrogate: o-Terphenyl	47		"	49.8		93.7	50-150			

Origins Laboratory, Inc.



The results in this report apply to the samples analyzed in accordance with the chain of custody document. This analytical report must be reproduced in its entirety.

Eagle Environmental Consulting, Inc.
 8000 W 44th Ave
 Wheat Ridge CO 80033

Martin C Eckert III
 Project Number: -
 Project: Noble - Uhrich 14-29

Extractable Petroleum Hydrocarbons by 8015D - Quality Control
Origins Laboratory, Inc.

Analyte	Result	Reporting Limit	Units	Spike Level	Source Result	%REC	%REC Limits	RPD	RPD Limit	Notes
---------	--------	-----------------	-------	-------------	---------------	------	-------------	-----	-----------	-------

Batch B2C2828 - EPA 3550B

Matrix Spike (B2C2828-MS1)	Source: Y203626-02			Prepared: 03/28/2022 Analyzed: 03/30/2022						
Diesel (C10-C28)	933	50.0	mg/kg	1000	ND	93.3	70-130			
Residual Range Organics (C28-C40)	924	200	"	1000	ND	92.4	70-130			
Surrogate: o-Terphenyl	48		"	49.8		96.3	50-150			

Origins Laboratory, Inc.



The results in this report apply to the samples analyzed in accordance with the chain of custody document. This analytical report must be reproduced in its entirety.

Eagle Environmental Consulting, Inc.
 8000 W 44th Ave
 Wheat Ridge CO 80033

Martin C Eckert III
 Project Number: -
 Project: Noble - Uhrich 14-29

Extractable Petroleum Hydrocarbons by 8015D - Quality Control
Origins Laboratory, Inc.

Analyte	Result	Reporting Limit	Units	Spike Level	Source Result	%REC	%REC Limits	RPD	RPD Limit	Notes
---------	--------	-----------------	-------	-------------	---------------	------	-------------	-----	-----------	-------

Batch B2C2828 - EPA 3550B

Matrix Spike Dup (B2C2828-MSD1)	Source: Y203626-02		Prepared: 03/28/2022 Analyzed: 03/30/2022							
Diesel (C10-C28)	916	50.0	mg/kg	1000	ND	91.6	70-130	1.83	35	
Residual Range Organics (C28-C40)	969	200	"	1000	ND	96.9	70-130	4.72	35	
<i>Surrogate: o-Terphenyl</i>	49		"	49.8		98.2	50-150			

Origins Laboratory, Inc.



The results in this report apply to the samples analyzed in accordance with the chain of custody document. This analytical report must be reproduced in its entirety.

Eagle Environmental Consulting, Inc.
 8000 W 44th Ave
 Wheat Ridge CO 80033

Martin C Eckert III
 Project Number: -
 Project: Noble - Uhrich 14-29

Extractable Petroleum Hydrocarbons by 8015D - Quality Control
Origins Laboratory, Inc.

Analyte	Result	Reporting Limit	Units	Spike Level	Source Result	%REC	%REC Limits	RPD	RPD Limit	Notes
---------	--------	-----------------	-------	-------------	---------------	------	-------------	-----	-----------	-------

Batch B2C3024 - EPA 5030 (soil)

Blank (B2C3024-BLK1)

Prepared: 03/30/2022 Analyzed: 04/02/2022

1,2,4-Trimethylbenzene	ND	0.00200	mg/kg							U
1,3,5-Trimethylbenzene	ND	0.00200	"							U
Benzene	ND	0.00200	"							U
Ethylbenzene	ND	0.00200	"							U
Naphthalene	ND	0.0100	"							U
Toluene	ND	0.00200	"							U
Xylenes, total	ND	0.00200	"							U
Gasoline Range Hydrocarbons	ND	0.200	"							U
Surrogate: 1,2-Dichloroethane-d4	0.13		"	0.125		102	70-130			
Surrogate: Toluene-d8	0.12		"	0.125		94.7	70-130			
Surrogate: 4-Bromofluorobenzene	0.12		"	0.125		98.0	70-130			

Origins Laboratory, Inc.



The results in this report apply to the samples analyzed in accordance with the chain of custody document. This analytical report must be reproduced in its entirety.

Eagle Environmental Consulting, Inc.
 8000 W 44th Ave
 Wheat Ridge CO 80033

Martin C Eckert III
 Project Number: -
 Project: Noble - Uhrich 14-29

Volatile Organic Compounds by GC/MS SW846 8260D - Quality Control
Origins Laboratory, Inc.

Analyte	Result	Reporting Limit	Units	Spike Level	Source Result	%REC	%REC Limits	RPD	RPD Limit	Notes
---------	--------	-----------------	-------	-------------	---------------	------	-------------	-----	-----------	-------

Batch B2C3024 - EPA 5030 (soil)

LCS (B2C3024-BS1)

Prepared: 03/30/2022 Analyzed: 04/02/2022

1,2,4-Trimethylbenzene	0.112	0.00200	mg/kg	0.100		112	70-130			
1,3,5-Trimethylbenzene	0.113	0.00200	"	0.100		113	70-130			
Benzene	0.107	0.00200	"	0.100		107	70-130			
Ethylbenzene	0.104	0.00200	"	0.100		104	70-130			
Naphthalene	0.105	0.0100	"	0.100		105	70-130			
Toluene	0.103	0.00200	"	0.100		103	70-130			
o-Xylene	0.104	0.00200	"	0.100		104	70-130			
m,p-Xylene	0.208	0.00400	"	0.200		104	70-130			
Surrogate: 1,2-Dichloroethane-d4	0.13		"	0.125		103	70-130			
Surrogate: Toluene-d8	0.12		"	0.125		97.4	70-130			
Surrogate: 4-Bromofluorobenzene	0.12		"	0.125		96.7	70-130			

Origins Laboratory, Inc.



The results in this report apply to the samples analyzed in accordance with the chain of custody document. This analytical report must be reproduced in its entirety.

Eagle Environmental Consulting, Inc.
 8000 W 44th Ave
 Wheat Ridge CO 80033

Martin C Eckert III
 Project Number: -
 Project: Noble - Uhrich 14-29

Volatile Organic Compounds by GC/MS SW846 8260D - Quality Control
Origins Laboratory, Inc.

Analyte	Result	Reporting Limit	Units	Spike Level	Source Result	%REC	%REC Limits	RPD	RPD Limit	Notes
---------	--------	-----------------	-------	-------------	---------------	------	-------------	-----	-----------	-------

Batch B2C3024 - EPA 5030 (soil)

Matrix Spike (B2C3024-MS1)	Source: Y203681-01			Prepared: 03/30/2022 Analyzed: 04/02/2022						
1,2,4-Trimethylbenzene	0.114	0.00200	mg/kg	0.100	ND	114	70-130			
1,3,5-Trimethylbenzene	0.114	0.00200	"	0.100	ND	114	70-130			
Benzene	0.108	0.00200	"	0.100	ND	108	70-130			
Ethylbenzene	0.107	0.00200	"	0.100	ND	107	70-130			
Naphthalene	0.102	0.0100	"	0.100	ND	102	70-130			
Toluene	0.104	0.00200	"	0.100	ND	104	70-130			
o-Xylene	0.105	0.00200	"	0.100	ND	105	70-130			
m,p-Xylene	0.213	0.00400	"	0.200	ND	107	70-130			
Surrogate: 1,2-Dichloroethane-d4	0.13		"	0.125		100	70-130			
Surrogate: Toluene-d8	0.12		"	0.125		97.3	70-130			
Surrogate: 4-Bromofluorobenzene	0.12		"	0.125		98.5	70-130			

Origins Laboratory, Inc.



The results in this report apply to the samples analyzed in accordance with the chain of custody document. This analytical report must be reproduced in its entirety.

Eagle Environmental Consulting, Inc.
 8000 W 44th Ave
 Wheat Ridge CO 80033

Martin C Eckert III
 Project Number: -
 Project: Noble - Uhrich 14-29

Volatile Organic Compounds by GC/MS SW846 8260D - Quality Control
Origins Laboratory, Inc.

Analyte	Result	Reporting Limit	Units	Spike Level	Source Result	%REC	%REC Limits	RPD	RPD Limit	Notes
---------	--------	-----------------	-------	-------------	---------------	------	-------------	-----	-----------	-------

Batch B2C3024 - EPA 5030 (soil)

Matrix Spike Dup (B2C3024-MSD1)	Source: Y203681-01			Prepared: 03/30/2022 Analyzed: 04/02/2022						
1,2,4-Trimethylbenzene	0.106	0.00200	mg/kg	0.100	ND	106	70-130	6.95	20	
1,3,5-Trimethylbenzene	0.106	0.00200	"	0.100	ND	106	70-130	7.17	20	
Benzene	0.101	0.00200	"	0.100	ND	101	70-130	6.25	20	
Ethylbenzene	0.0984	0.00200	"	0.100	ND	98.4	70-130	8.43	20	
Naphthalene	0.101	0.0100	"	0.100	ND	101	70-130	0.513	20	
Toluene	0.0968	0.00200	"	0.100	ND	96.8	70-130	7.59	20	
o-Xylene	0.0987	0.00200	"	0.100	ND	98.7	70-130	6.53	20	
m,p-Xylene	0.196	0.00400	"	0.200	ND	98.1	70-130	8.27	20	
Surrogate: 1,2-Dichloroethane-d4	0.13		"	0.125		101	70-130			
Surrogate: Toluene-d8	0.12		"	0.125		95.6	70-130			
Surrogate: 4-Bromofluorobenzene	0.12		"	0.125		97.1	70-130			

Origins Laboratory, Inc.



The results in this report apply to the samples analyzed in accordance with the chain of custody document. This analytical report must be reproduced in its entirety.

Eagle Environmental Consulting, Inc.
 8000 W 44th Ave
 Wheat Ridge CO 80033

Martin C Eckert III
 Project Number: -
 Project: Noble - Uhrich 14-29

Volatile Organic Compounds by GC/MS SW846 8260D - Quality Control
Origins Laboratory, Inc.

Analyte	Result	Reporting Limit	Units	Spike Level	Source Result	%REC	%REC Limits	RPD	RPD Limit	Notes
---------	--------	-----------------	-------	-------------	---------------	------	-------------	-----	-----------	-------

Saturated Paste - Quality Control
Origins Laboratory, Inc.

Analyte	Result	Reporting Limit	Units	Spike Level	Source Result	%REC	%REC Limits	RPD	RPD Limit	Notes
---------	--------	-----------------	-------	-------------	---------------	------	-------------	-----	-----------	-------

Batch B2C2807 - NO PREP

Blank (B2C2807-BLK1)

Prepared: 03/28/2022 Analyzed: 03/29/2022

Specific Conductance (EC) 0.000800 0.00500 mmhos/cm

Duplicate (B2C2807-DUP1)

Source: Y203623-13

Prepared: 03/28/2022 Analyzed: 03/29/2022

Specific Conductance (EC) 0.648 0.00500 mmhos/cm

0.611 5.92 25

Batch B2C2810 - NO PREP

Duplicate (B2C2810-DUP1)

Source: Y203623-13

Prepared: 03/28/2022 Analyzed: 03/29/2022

pH 7.82 pH Units

8.00 2.28 25

Origins Laboratory, Inc.



The results in this report apply to the samples analyzed in accordance with the chain of custody document. This analytical report must be reproduced in its entirety.

Eagle Environmental Consulting, Inc.
 8000 W 44th Ave
 Wheat Ridge CO 80033

Martin C Eckert III
 Project Number: -
 Project: Noble - Uhrich 14-29

Total Metals by 6020B - Quality Control
Waypoint Analytical, LLC.

Analyte	Result	Reporting Limit	Units	Spike Level	Source Result	%REC	%REC Limits	RPD	RPD Limit	Notes
---------	--------	-----------------	-------	-------------	---------------	------	-------------	-----	-----------	-------

Batch L609411 - 3050B

MSD (L 96261-MSD-L609411)		Source: 96261			Prepared: 04/07/2022 Analyzed: 04/11/2022					
Barium	87	0.042	mg/Kg	4.69	71.1	339	75-125	90.9	80	*
Nickel	9.6	0.0633	"	2.35	7.54	88	75-125	4.9	80	
Copper	6.34	0.0806	"	2.35	4.36	84	75-125	7.5	80	
Arsenic	4.09	0.0855	"	2.35	2.16	82	75-125	3.3	80	
Selenium	4.13	0.103	"	4.69	0.269	82	75-125	8.3	80	
Lead	7.25	0.031	"	2.35	5.52	74	75-125	0.4	80	*
Silver	0.462	0.0067	"	0.469	0.0211	94	75-125	2.5	80	
Cadmium	0.475	0.0259	"	0.469	0.0624	88	75-125	2	80	
Zinc	41.5	0.534	"	23.5	19.7	93	75-125	1.4	80	

MS (L 96261-MS-L609411)		Source: 96261			Prepared: 04/07/2022 Analyzed: 04/11/2022					
Cadmium	0.485	0.0259	mg/Kg	0.469	0.0624	90	75-125			
Arsenic	4.23	0.0855	"	2.35	2.16	88	75-125			
Copper	5.88	0.0806	"	2.35	4.36	65	75-125			*
Barium	232	0.042	"	4.69	71.1	NR	75-125			*
Nickel	9.14	0.0633	"	2.35	7.54	68	75-125			*
Lead	7.22	0.031	"	2.35	5.52	72	75-125			*
Selenium	3.8	0.103	"	4.69	0.269	75	75-125			
Silver	0.474	0.0067	"	0.469	0.0211	96	75-125			
Zinc	40.9	0.534	"	23.5	19.7	90	75-125			

LCS (LCS-L609411)					Prepared: 04/07/2022 Analyzed: 04/11/2022					
Cadmium	0.498	0.0259	mg/Kg	0.5		100	80-120			
Barium	4.94	0.042	"	5		99	80-120			
Copper	2.39	0.0806	"	2.5		96	80-120			
Lead	2.36	0.031	"	2.5		94	80-120			
Nickel	2.41	0.0633	"	2.5		96	80-120			

Origins Laboratory, Inc.



The results in this report apply to the samples analyzed in accordance with the chain of custody document. This analytical report must be reproduced in its entirety.

Eagle Environmental Consulting, Inc.
 8000 W 44th Ave
 Wheat Ridge CO 80033

Martin C Eckert III
 Project Number: -
 Project: Noble - Uhrich 14-29

Total Metals by 6020B - Quality Control
Waypoint Analytical, LLC.

Analyte	Result	Reporting Limit	Units	Spike Level	Source Result	%REC	%REC Limits	RPD	RPD Limit	Notes
---------	--------	-----------------	-------	-------------	---------------	------	-------------	-----	-----------	-------

Batch L609411 - 3050B

LCS (LCS-L609411)

Prepared: 04/07/2022 Analyzed: 04/11/2022

Selenium	4.73	0.103	mg/Kg	5		95	80-120			
Silver	0.486	0.0067	"	0.5		97	80-120			
Zinc	23.6	0.534	"	25		94	80-120			
Arsenic	2.5	0.0855	"	2.5		100	80-120			

LRB (LRB-L609411)

Prepared: 04/07/2022 Analyzed: 04/11/2022

Arsenic	0.141	0.25	mg/Kg				-			J
Barium	ND	0.25	"				-			
Cadmium	ND	0.25	"				-			
Copper	ND	0.25	"				-			
Lead	ND	0.25	"				-			
Nickel	ND	0.25	"				-			
Selenium	ND	0.25	"				-			
Silver	ND	0.25	"				-			
Zinc	ND	2.5	"				-			

Origins Laboratory, Inc.



The results in this report apply to the samples analyzed in accordance with the chain of custody document. This analytical report must be reproduced in its entirety.

Eagle Environmental Consulting, Inc.
 8000 W 44th Ave
 Wheat Ridge CO 80033

Martin C Eckert III
 Project Number: -
 Project: Noble - Uhrich 14-29

Total Metals by 7196A - Quality Control
Waypoint Analytical, LLC.

Analyte	Result	Reporting Limit	Units	Spike Level	Source Result	%REC	%REC Limits	RPD	RPD Limit	Notes
Batch L610021 -										
DUP (L 89121-DUP)		Source: 89121			Prepared: Analyzed: 04/11/2022					
Chromium, Hexavalent	ND	0.497	mg/Kg		89121		-	0	20	
MS (L 89121-MS)		Source: 89121			Prepared: Analyzed: 04/11/2022					
Chromium, Hexavalent	2.78	0.488	mg/Kg	7.96	89121	35	75-125			*
LCS (LCS)		Prepared: Analyzed: 04/11/2022								
Chromium, Hexavalent	7.27	0.244	mg/Kg	8		91	75-125			
LRB (LRB)		Prepared: Analyzed: 04/11/2022								
Chromium, Hexavalent	ND	0.5	mg/Kg				-			

Origins Laboratory, Inc.



The results in this report apply to the samples analyzed in accordance with the chain of custody document. This analytical report must be reproduced in its entirety.

Eagle Environmental Consulting, Inc.
 8000 W 44th Ave
 Wheat Ridge CO 80033

Martin C Eckert III
 Project Number: -
 Project: Noble - Uhrich 14-29

PAH by 8270D SIM - Quality Control
Waypoint Analytical, Inc.

Analyte	Result	Reporting Limit	Units	Spike Level	Source Result	%REC	%REC Limits	RPD	RPD Limit	Notes
---------	--------	-----------------	-------	-------------	---------------	------	-------------	-----	-----------	-------

Batch L607878 - 3550B

MSD (L 95932-MSD-L607878)		Source: 95932			Prepared: 03/30/2022 Analyzed: 03/31/2022					
2-Methylnaphthalene	0.105	0.000645	mg/Kg	0.166	95932	63.2	30-130	9.2	30	
Acenaphthene	0.101	0.000304	"	0.166	95932	60.8	30-130	8.2	30	
Naphthalene	0.101	0.000484	"	0.166	95932	60.8	30-130	10.6	30	
Benzo(b)fluoranthene	0.119	0.000585	"	0.166	95932	71.6	30-130	14.4	30	
Anthracene	0.121	0.000334	"	0.166	95932	72.8	30-130	11.3	30	
Chrysene	0.109	0.000624	"	0.166	95932	65.6	30-130	9.2	30	
Benzo(a)anthracene	0.119	0.000493	"	0.166	95932	71.6	30-130	11.5	30	
Benzo(a)pyrene	0.116	0.000468	"	0.166	95932	69.8	30-130	10.9	30	
1-Methylnaphthalene	0.105	0.000364	"	0.166	95932	63.2	30-130	7.1	30	
Dibenz(a,h)anthracene	0.155	0.000614	"	0.166	95932	93.3	30-130	1.2	30	
Pyrene	0.127	0.000643	"	0.166	95932	76.5	30-130	9.9	30	
Fluoranthene	0.128	0.000394	"	0.166	95932	77.1	30-130	12.4	30	
Fluorene	0.114	0.000286	"	0.166	95932	68.6	30-130	7.2	30	
Benzo(k)fluoranthene	0.0998	0.000437	"	0.166	95932	60.1	30-130	7.3	30	
Indeno(1,2,3-cd)pyrene	0.147	0.000627	"	0.166	95932	88.5	30-130	2	30	
Surrogate: 2-Fluorobiphenyl	55.8		"	0.331	201	55.8	33-115			
Surrogate: 4-Terphenyl-d14	77.3		"	0.331	227	77.3	33-122			
Surrogate: Nitrobenzene-d5	45.3		"	0.331	160	45.3	29-110			

MS (L 95932-MS-L607878)		Source: 95932			Prepared: 03/30/2022 Analyzed: 03/31/2022					
Chrysene	0.0994	0.000624	mg/Kg	0.162	95932	61.3	30-130			
1-Methylnaphthalene	0.0978	0.000364	"	0.162	95932	60.3	30-130			
Dibenz(a,h)anthracene	0.153	0.000614	"	0.162	95932	94.4	30-130			
Anthracene	0.108	0.000334	"	0.162	95932	66.6	30-130			
Benzo(k)fluoranthene	0.0927	0.000437	"	0.162	95932	57.2	30-130			
Fluoranthene	0.113	0.000394	"	0.162	95932	69.7	30-130			
Benzo(b)fluoranthene	0.103	0.000585	"	0.162	95932	63.5	30-130			

Origins Laboratory, Inc.



The results in this report apply to the samples analyzed in accordance with the chain of custody document. This analytical report must be reproduced in its entirety.

Eagle Environmental Consulting, Inc.
 8000 W 44th Ave
 Wheat Ridge CO 80033

Martin C Eckert III
 Project Number: -
 Project: Noble - Uhrich 14-29

PAH by 8270D SIM - Quality Control
Waypoint Analytical, Inc.

Analyte	Result	Reporting Limit	Units	Spike Level	Source Result	%REC	%REC Limits	RPD	RPD Limit	Notes
---------	--------	-----------------	-------	-------------	---------------	------	-------------	-----	-----------	-------

Batch L607878 - 3550B

MS (L 95932-MS-L607878)		Source: 95932			Prepared: 03/30/2022 Analyzed: 03/31/2022					
Benzo(a)pyrene	0.104	0.000468	mg/Kg	0.162	95932	64.1	30-130			
Benzo(a)anthracene	0.106	0.000493	"	0.162	95932	65.4	30-130			
Acenaphthene	0.093	0.000304	"	0.162	95932	57.4	30-130			
Indeno(1,2,3-cd)pyrene	0.144	0.000627	"	0.162	95932	88.8	30-130			
Naphthalene	0.0908	0.000484	"	0.162	95932	56	30-130			
Pyrene	0.115	0.000643	"	0.162	95932	70.9	30-130			
Fluorene	0.106	0.000286	"	0.162	95932	65.4	30-130			
2-Methylnaphthalene	0.0957	0.000645	"	0.162	95932	59	30-130			
Surrogate: 4-Terphenyl-d14	66.1		"	0.325	227	66.1	33-122			
Surrogate: 2-Fluorobiphenyl	52.6		"	0.325	201	52.6	33-115			
Surrogate: Nitrobenzene-d5	44		"	0.325	160	44	29-110			

LCS (LCS-L607878)					Prepared: 03/30/2022 Analyzed: 03/31/2022					
Anthracene	0.125	0.000334	mg/Kg	0.167		74.8	30-130			
1-Methylnaphthalene	0.114	0.000364	"	0.167		68.2	30-130			
Dibenz(a,h)anthracene	0.158	0.000614	"	0.167		94.6	30-130			
Fluoranthene	0.133	0.000394	"	0.167		79.6	30-130			
Fluorene	0.12	0.000286	"	0.167		71.8	30-130			
Indeno(1,2,3-cd)pyrene	0.153	0.000627	"	0.167		91.6	30-130			
Naphthalene	0.109	0.000484	"	0.167		65.2	30-130			
Benzo(a)pyrene	0.123	0.000468	"	0.167		73.6	30-130			
Chrysene	0.114	0.000624	"	0.167		68.2	30-130			
Acenaphthene	0.108	0.000304	"	0.167		64.6	30-130			
2-Methylnaphthalene	0.113	0.000645	"	0.167		67.6	30-130			
Benzo(a)anthracene	0.123	0.000493	"	0.167		73.6	30-130			
Benzo(k)fluoranthene	0.102	0.000437	"	0.167		61	30-130			
Benzo(b)fluoranthene	0.132	0.000585	"	0.167		79	30-130			

Origins Laboratory, Inc.



The results in this report apply to the samples analyzed in accordance with the chain of custody document. This analytical report must be reproduced in its entirety.

Eagle Environmental Consulting, Inc.
 8000 W 44th Ave
 Wheat Ridge CO 80033

Martin C Eckert III
 Project Number: -
 Project: Noble - Uhrich 14-29

PAH by 8270D SIM - Quality Control
Waypoint Analytical, Inc.

Analyte	Result	Reporting Limit	Units	Spike Level	Source Result	%REC	%REC Limits	RPD	RPD Limit	Notes
---------	--------	-----------------	-------	-------------	---------------	------	-------------	-----	-----------	-------

Batch L607878 - 3550B

LCS (LCS-L607878)

Prepared: 03/30/2022 Analyzed: 03/31/2022

Pyrene	0.134	0.000643	mg/Kg	0.167		80.2	30-130			
Surrogate: Nitrobenzene-d5	49.8		"	0.333	49.8		29-110			
Surrogate: 2-Fluorobiphenyl	65.4		"	0.333	65.4		33-115			
Surrogate: 4-Terphenyl-d14	75		"	0.333	75		33-122			

LRB (LRB-L607878)

Prepared: 03/30/2022 Analyzed: 03/31/2022

Pyrene	ND	0.00067	mg/Kg				-			
Acenaphthene	ND	0.00067	"				-			
Indeno(1,2,3-cd)pyrene	ND	0.00067	"				-			
Naphthalene	ND	0.00067	"				-			
Fluorene	ND	0.00067	"				-			
2-Methylnaphthalene	ND	0.00067	"				-			
Fluoranthene	ND	0.00067	"				-			
Anthracene	ND	0.00067	"				-			
Benzo(a)anthracene	ND	0.00067	"				-			
Benzo(a)pyrene	ND	0.00067	"				-			
Benzo(b)fluoranthene	ND	0.00067	"				-			
Benzo(k)fluoranthene	ND	0.00067	"				-			
Chrysene	ND	0.00067	"				-			
Dibenz(a,h)anthracene	ND	0.00067	"				-			
1-Methylnaphthalene	ND	0.00067	"				-			
Surrogate: Nitrobenzene-d5	60.6		"	0.333	60.6		29-110			
Surrogate: 2-Fluorobiphenyl	77.1		"	0.333	77.1		33-115			
Surrogate: 4-Terphenyl-d14	89.1		"	0.333	89.1		33-122			

Batch L607990 - 3550B

MSD (L 95956-MSD-L607990)

Source: Y203626-02

Prepared: 03/31/2022 Analyzed: 03/31/2022

Origins Laboratory, Inc.



The results in this report apply to the samples analyzed in accordance with the chain of custody document. This analytical report must be reproduced in its entirety.

Eagle Environmental Consulting, Inc.
 8000 W 44th Ave
 Wheat Ridge CO 80033

Martin C Eckert III
 Project Number: -
 Project: Noble - Uhrich 14-29

PAH by 8270D SIM - Quality Control
Waypoint Analytical, Inc.

Analyte	Result	Reporting Limit	Units	Spike Level	Source Result	%REC	%REC Limits	RPD	RPD Limit	Notes
---------	--------	-----------------	-------	-------------	---------------	------	-------------	-----	-----------	-------

Batch L607990 - 3550B

MSD (L 95956-MSD-L607990)		Source: Y203626-02			Prepared: 03/31/2022 Analyzed: 03/31/2022					
Benzo(a)anthracene	0.116	0.00247	mg/Kg	0.167	95956	69.4	30-130	1.7	30	
Dibenz(a,h)anthracene	0.107	0.00307	"	0.167	95956	64	30-130	4.5	30	
Pyrene	0.0985	0.00322	"	0.167	95956	58.9	30-130	0.1	30	
Naphthalene	0.0958	0.00242	"	0.167	95956	57.3	30-130	4	30	
Indeno(1,2,3-cd)pyrene	0.104	0.00314	"	0.167	95956	62.2	30-130	4.6	30	
Fluoranthene	0.0995	0.00197	"	0.167	95956	59.5	30-130	0.5	30	
Chrysene	0.105	0.00312	"	0.167	0.00331	60.8	30-130	1.8	30	
Benzo(k)fluoranthene	0.0789	0.00219	"	0.167	95956	47.2	30-130	1.8	30	
Benzo(b)fluoranthene	0.0754	0.00293	"	0.167	95956	45.1	30-130	2.6	30	
Fluorene	0.113	0.00143	"	0.167	0.00997	61.6	30-130	0	30	
1-Methylnaphthalene	0.0987	0.00182	"	0.167	0.00342	57	30-130	4.5	30	
Benzo(a)pyrene	0.109	0.00234	"	0.167	95956	65.2	30-130	6.2	30	
2-Methylnaphthalene	0.0977	0.00323	"	0.167	95956	58.5	30-130	3.5	30	
Anthracene	0.109	0.00167	"	0.167	95956	65.2	30-130	2.7	30	
Acenaphthene	0.102	0.00152	"	0.167	0.00668	57	30-130	0.9	30	
Surrogate: Nitrobenzene-d5	47.7		"	0.333	184	47.7	29-110			
Surrogate: 2-Fluorobiphenyl	49.2		"	0.333	163	49.2	33-115			
Surrogate: 4-Terphenyl-d14	58.8		"	0.333	196	58.8	33-122			

MS (L 95956-MS-L607990)		Source: Y203626-02			Prepared: 03/31/2022 Analyzed: 03/31/2022					
Benzo(b)fluoranthene	0.0734	0.00293	mg/Kg	0.166	95956	44.2	30-130			
Naphthalene	0.092	0.00242	"	0.166	95956	55.4	30-130			
Indeno(1,2,3-cd)pyrene	0.109	0.00314	"	0.166	95956	65.6	30-130			
Fluorene	0.113	0.00143	"	0.166	0.00997	62	30-130			
Fluoranthene	0.1	0.00197	"	0.166	95956	60.2	30-130			
Dibenz(a,h)anthracene	0.112	0.00307	"	0.166	95956	67.4	30-130			
Chrysene	0.107	0.00312	"	0.166	0.00331	62.4	30-130			

Origins Laboratory, Inc.



The results in this report apply to the samples analyzed in accordance with the chain of custody document. This analytical report must be reproduced in its entirety.

Eagle Environmental Consulting, Inc.
 8000 W 44th Ave
 Wheat Ridge CO 80033

Martin C Eckert III
 Project Number: -
 Project: Noble - Uhrich 14-29

PAH by 8270D SIM - Quality Control
Waypoint Analytical, Inc.

Analyte	Result	Reporting Limit	Units	Spike Level	Source Result	%REC	%REC Limits	RPD	RPD Limit	Notes
---------	--------	-----------------	-------	-------------	---------------	------	-------------	-----	-----------	-------

Batch L607990 - 3550B

MS (L 95956-MS-L607990)		Source: Y203626-02			Prepared: 03/31/2022 Analyzed: 03/31/2022					
Benzo(k)fluoranthene	0.0804	0.00219	mg/Kg	0.166	95956	48.4	30-130			
1-Methylnaphthalene	0.0943	0.00182	"	0.166	0.00342	54.7	30-130			
Benzo(a)anthracene	0.118	0.00247	"	0.166	95956	71	30-130			
Anthracene	0.106	0.00167	"	0.166	95956	63.8	30-130			
Acenaphthene	0.101	0.00152	"	0.166	0.00668	56.8	30-130			
2-Methylnaphthalene	0.0943	0.00323	"	0.166	95956	56.8	30-130			
Benzo(a)pyrene	0.116	0.00234	"	0.166	95956	69.8	30-130			
Pyrene	0.0986	0.00322	"	0.166	95956	59.3	30-130			
Surrogate: Nitrobenzene-d5	46.9		"	0.332	184	46.9	29-110			
Surrogate: 4-Terphenyl-d14	56.3		"	0.332	196	56.3	33-122			
Surrogate: 2-Fluorobiphenyl	47.5		"	0.332	163	47.5	33-115			

LCS (LCS-L607990)		Prepared: 03/31/2022 Analyzed: 03/31/2022								
Dibenz(a,h)anthracene	0.115	0.000614	mg/Kg	0.167		68.8	30-130			
Chrysene	0.106	0.000624	"	0.167		63.4	30-130			
1-Methylnaphthalene	0.0944	0.000364	"	0.167		56.5	30-130			
Fluoranthene	0.0925	0.000394	"	0.167		55.3	30-130			
Acenaphthene	0.0993	0.000304	"	0.167		59.4	30-130			
Anthracene	0.102	0.000334	"	0.167		61	30-130			
Pyrene	0.0888	0.000643	"	0.167		53.1	30-130			
2-Methylnaphthalene	0.0951	0.000645	"	0.167		56.9	30-130			
Benzo(a)pyrene	0.108	0.000468	"	0.167		64.6	30-130			
Benzo(a)anthracene	0.115	0.000493	"	0.167		68.8	30-130			
Benzo(b)fluoranthene	0.0705	0.000585	"	0.167		42.2	30-130			
Indeno(1,2,3-cd)pyrene	0.11	0.000627	"	0.167		65.8	30-130			
Benzo(k)fluoranthene	0.0728	0.000437	"	0.167		43.5	30-130			
Fluorene	0.104	0.000286	"	0.167		62.2	30-130			

Origins Laboratory, Inc.



The results in this report apply to the samples analyzed in accordance with the chain of custody document. This analytical report must be reproduced in its entirety.

Eagle Environmental Consulting, Inc.
 8000 W 44th Ave
 Wheat Ridge CO 80033

Martin C Eckert III
 Project Number: -
 Project: Noble - Uhrich 14-29

PAH by 8270D SIM - Quality Control
Waypoint Analytical, Inc.

Analyte	Result	Reporting Limit	Units	Spike Level	Source Result	%REC	%REC Limits	RPD	RPD Limit	Notes
---------	--------	-----------------	-------	-------------	---------------	------	-------------	-----	-----------	-------

Batch L607990 - 3550B

LCS (LCS-L607990)

Prepared: 03/31/2022 Analyzed: 03/31/2022

Naphthalene	0.0957	0.000484	mg/Kg	0.167		57.3	30-130			
Surrogate: 2-Fluorobiphenyl	63		"	0.333		63	33-115			
Surrogate: 4-Terphenyl-d14	67.8		"	0.333		67.8	33-122			
Surrogate: Nitrobenzene-d5	61.5		"	0.333		61.5	29-110			

LRB (LRB-L607990)

Prepared: 03/31/2022 Analyzed: 03/31/2022

Anthracene	ND	0.00067	mg/Kg				-			
1-Methylnaphthalene	ND	0.00067	"				-			
2-Methylnaphthalene	ND	0.00067	"				-			
Acenaphthene	ND	0.00067	"				-			
Benzo(a)anthracene	ND	0.00067	"				-			
Benzo(a)pyrene	ND	0.00067	"				-			
Benzo(b)fluoranthene	ND	0.00067	"				-			
Benzo(k)fluoranthene	ND	0.00067	"				-			
Chrysene	ND	0.00067	"				-			
Dibenz(a,h)anthracene	ND	0.00067	"				-			
Fluoranthene	ND	0.00067	"				-			
Fluorene	ND	0.00067	"				-			
Naphthalene	ND	0.00067	"				-			
Pyrene	ND	0.00067	"				-			
Indeno(1,2,3-cd)pyrene	ND	0.00067	"				-			
Surrogate: 2-Fluorobiphenyl	51.9		"	0.333		51.9	33-115			
Surrogate: 4-Terphenyl-d14	64.8		"	0.333		64.8	33-122			
Surrogate: Nitrobenzene-d5	59.1		"	0.333		59.1	29-110			

Origins Laboratory, Inc.



The results in this report apply to the samples analyzed in accordance with the chain of custody document. This analytical report must be reproduced in its entirety.

Eagle Environmental Consulting, Inc.
 8000 W 44th Ave
 Wheat Ridge CO 80033

Martin C Eckert III
 Project Number: -
 Project: Noble - Uhrich 14-29

Total Metals by 7196A - Quality Control
Waypoint Analytical, Inc.

Analyte	Result	Reporting Limit	Units	Spike Level	Source Result	%REC	%REC Limits	RPD	RPD Limit	Notes
Batch L608321 -										
DUP (L 95960-DUP)		Source: Y203626-06			Prepared: Analyzed: 04/01/2022					
Chromium, Hexavalent	ND	0.249	mg/Kg		95960		-	0	20	
MS (L 95960-MS)		Source: Y203626-06			Prepared: Analyzed: 04/01/2022					
Chromium, Hexavalent	5.88	0.244	mg/Kg	7.78	95960	76	75-125			
LCS (LCS)		Prepared: Analyzed: 04/01/2022								
Chromium, Hexavalent	6.32	0.244	mg/Kg	8		79	75-125			
LRB (LRB)		Prepared: Analyzed: 04/01/2022								
Chromium, Hexavalent	ND	0.5	mg/Kg				-			

Origins Laboratory, Inc.



The results in this report apply to the samples analyzed in accordance with the chain of custody document. This analytical report must be reproduced in its entirety.

Eagle Environmental Consulting, Inc.
 8000 W 44th Ave
 Wheat Ridge CO 80033

Martin C Eckert III
 Project Number: -
 Project: Noble - Uhrich 14-29

Total Metals by 6020B - Quality Control
Waypoint Analytical, Inc.

Analyte	Result	Reporting Limit	Units	Spike Level	Source Result	%REC	%REC Limits	RPD	RPD Limit	Notes
---------	--------	-----------------	-------	-------------	---------------	------	-------------	-----	-----------	-------

Batch L607553 - 3050B

MSD (L 95995-MSD-L607553)		Source: 95995			Prepared: 03/29/2022 Analyzed: 03/31/2022					
Cadmium	0.647	0.0259	mg/Kg	0.48	0.283	76	75-125	9.4	80	
Zinc	110	0.534	"	24	104	25	75-125	9.5	80	*
Silver	0.47	0.0067	"	0.48	0.0667	84	75-125	10.8	80	
Selenium	4.33	0.103	"	4.8	0.632	77	75-125	13.5	80	
Nickel	14.5	0.0633	"	2.4	13.3	50	75-125	8.5	80	*
Copper	33.1	0.161	"	2.4	25.8	304	75-125	20.2	80	*
Barium	143	0.042	"	4.8	172	NR	75-125	15.4	80	*
Arsenic	3.95	0.0855	"	2.4	2.4	65	75-125	14.7	80	*
Lead	13.8	0.031	"	2.4	14	NR	75-125	12.2	80	*

MS (L 95995-MS-L607553)		Source: 95995			Prepared: 03/29/2022 Analyzed: 03/31/2022					
Arsenic	4.58	0.0855	mg/Kg	2.36	2.4	92	75-125			
Barium	167	0.042	"	4.72	172	NR	75-125			*
Cadmium	0.711	0.0259	"	0.472	0.283	91	75-125			
Copper	27	0.161	"	2.36	25.8	51	75-125			*
Lead	15.6	0.031	"	2.36	14	68	75-125			*
Nickel	15.8	0.0633	"	2.36	13.3	106	75-125			
Selenium	4.96	0.103	"	4.72	0.632	92	75-125			
Silver	0.524	0.0067	"	0.472	0.0667	97	75-125			
Zinc	121	0.534	"	23.6	104	72	75-125			*

LCS (LCS-L607553)		Prepared: 03/29/2022 Analyzed: 03/31/2022								
Lead	2.52	0.031	mg/Kg	2.5		101	80-120			
Arsenic	2.58	0.0855	"	2.5		103	80-120			
Barium	5.06	0.042	"	5		101	80-120			
Copper	2.48	0.0806	"	2.5		99	80-120			
Nickel	2.4	0.0633	"	2.5		96	80-120			

Origins Laboratory, Inc.



The results in this report apply to the samples analyzed in accordance with the chain of custody document. This analytical report must be reproduced in its entirety.

Eagle Environmental Consulting, Inc.
 8000 W 44th Ave
 Wheat Ridge CO 80033

Martin C Eckert III
 Project Number: -
 Project: Noble - Uhrich 14-29

Total Metals by 6020B - Quality Control
Waypoint Analytical, Inc.

Analyte	Result	Reporting Limit	Units	Spike Level	Source Result	%REC	%REC Limits	RPD	RPD Limit	Notes
---------	--------	-----------------	-------	-------------	---------------	------	-------------	-----	-----------	-------

Batch L607553 - 3050B

LCS (LCS-L607553)

Prepared: 03/29/2022 Analyzed: 03/31/2022

Selenium	4.9	0.103	mg/Kg	5		98	80-120			
Silver	0.49	0.0067	"	0.5		98	80-120			
Zinc	24.6	0.534	"	25		98	80-120			
Cadmium	0.491	0.0259	"	0.5		98	80-120			

LRB (LRB-L607553)

Prepared: 03/29/2022 Analyzed: 03/31/2022

Nickel	ND	0.25	mg/Kg				-			
Arsenic	ND	0.25	"				-			
Barium	ND	0.25	"				-			
Cadmium	ND	0.25	"				-			
Lead	ND	0.25	"				-			
Selenium	ND	0.25	"				-			
Silver	ND	0.25	"				-			
Zinc	ND	2.5	"				-			
Copper	ND	0.25	"				-			

Origins Laboratory, Inc.



The results in this report apply to the samples analyzed in accordance with the chain of custody document. This analytical report must be reproduced in its entirety.

Eagle Environmental Consulting, Inc.
 8000 W 44th Ave
 Wheat Ridge CO 80033

Martin C Eckert III
 Project Number: -
 Project: Noble - Uhrich 14-29

Total Metals by 7196A - Quality Control
Waypoint Analytical, Inc.

Analyte	Result	Reporting Limit	Units	Spike Level	Source Result	%REC	%REC Limits	RPD	RPD Limit	Notes
Batch L608319 -										
DUP (L 95936-DUP)		Source: 95936			Prepared: Analyzed: 04/01/2022					
Chromium, Hexavalent	ND	0.244	mg/Kg		95936		-	0	20	
MS (L 95936-MS)		Source: 95936			Prepared: Analyzed: 04/01/2022					
Chromium, Hexavalent	7.02	0.251	mg/Kg	8.27	95936	85	75-125			

Origins Laboratory, Inc.



The results in this report apply to the samples analyzed in accordance with the chain of custody document. This analytical report must be reproduced in its entirety.

Eagle Environmental Consulting, Inc.
8000 W 44th Ave
Wheat Ridge CO 80033

Martin C Eckert III
Project Number: -
Project: Noble - Uhrich 14-29

Notes and Definitions

- U Sample is Non-Detect.
- J Estimated Value. Analyte below reported quantitation limit.
- * QC Failure
- ND Analyte NOT DETECTED at or above the reporting limit
- RPD Relative Percent Difference
- All soil results are reported on a wet weight basis.

Origins Laboratory, Inc.



The results in this report apply to the samples analyzed in accordance with the chain of custody document. This analytical report must be reproduced in its entirety.



April 15, 2022

Eagle Environmental Consulting, Inc.

Martin C Eckert III

8000 W 44th Ave

Wheat Ridge CO 80033

Project Name - Noble - Uhrich 14-29

Project Number - -

Attached are your analytical results for Noble - Uhrich 14-29 received by Origins Laboratory, Inc. April 06, 2022. This project is associated with Origins project number Y204112-01.

The analytical results in the following report were analyzed under the guidelines of EPA Methods. These methods are identified as follows; "SW" are defined in SW-846, "EPA" are defined in 40CFR part 136 and "SM" are defined in the most current revision of Standard Methods For the Examination of Water and Wastewater.

The analytical results apply specifically to the samples and analyses specified per the attached Chain of Custody. As such, this report shall not be reproduced except in full, without the written approval of Origin's laboratory.

Unless otherwise noted, the analytical results for all soil samples are reported on a wet weight basis. All analytical analyses were performed under NELAP guidelines unless noted by a data qualifier.

Any holding time exceedances, deviations from the method specifications or deviations from Origins Laboratory's Standard Operating Procedures are outlined in the case narrative.

Thank you for selecting Origins for your analytical needs. Please contact us with any questions concerning this report, or if we can help with anything at all.

Origins Laboratory, Inc.
303.433.1322
o-squad@oelabinc.com



1725 Elk Place, Denver, CO 80211 | Phone: 303.433.1322 | Fax: 303.265.9645

Eagle Environmental Consulting, Inc.
8000 W 44th Ave
Wheat Ridge CO 80033

Martin C Eckert III
Project Number: -
Project: Noble - Uhrich 14-29

CROSS REFERENCE REPORT

Sample ID	Laboratory ID	Matrix	Date Sampled	Date Received
Background-01@2'	Y204112-01	Soil	March 24, 2022 13:03	04/06/2022 17:42
Background-02@3'	Y204112-02	Soil	March 24, 2022 13:35	04/06/2022 17:42

Origins Laboratory, Inc.



The results in this report apply to the samples analyzed in accordance with the chain of custody document. This analytical report must be reproduced in its entirety.

Eagle Environmental Consulting, Inc.
 8000 W 44th Ave
 Wheat Ridge CO 80033

Martin C Eckert III
 Project Number: -
 Project: Noble - Uhrich 14-29

Origins Laboratory

Sample Receipt Checklist

F-012207-01-R1
 Effective Date: 01/09/12

Origins Work Order: 4204112

Client: Eagle/Noble

Client Project ID: Uhrich

Checklist Completed by: JMB

Shipped Via: HD
(UPS, FedEx, Hand Delivered, Pick-up, etc.)

Date/time completed: 4-2-22

Airbill #: 1112

Matrix(s) Received: (Check all that apply): Soil/Solid Water Other:

Cooler Number/Temperature: 1 1.4 °C / °C / °C (Describe)

Thermometer ID: 1003

Requirement Description	Yes	No	N/A	Comments (if any)
If samples require cooling, was the temperature between 0°C to ≤ 6°C ⁽¹⁾ ?	<input checked="" type="checkbox"/>			
Is there ice present (document if blue ice is used)	<input checked="" type="checkbox"/>			
Are custody seals present on cooler? (if so, document in comments if they are signed and dated, broken or intact)		<input checked="" type="checkbox"/>		
Are custody seals present on each sample container? (if so, document in comments if they are signed and dated, broken or intact)		<input checked="" type="checkbox"/>		
Were all samples received intact ⁽¹⁾ ?	<input checked="" type="checkbox"/>			
Was adequate sample volume provided ⁽¹⁾ ?	<input checked="" type="checkbox"/>			
Are short holding time analytes or samples with HTs due within 48 hours present ⁽¹⁾ ?		<input checked="" type="checkbox"/>		
Is a chain-of-custody (COC) present and filled out completely ⁽¹⁾ ?	<input checked="" type="checkbox"/>			
Does the COC agree with the number and type of sample bottles received ⁽¹⁾ ?	<input checked="" type="checkbox"/>			
Do the sample IDs on the bottle labels match the COC ⁽¹⁾ ?	<input checked="" type="checkbox"/>			
Is the COC properly relinquished by the client with date and time recorded ⁽¹⁾ ?	<input checked="" type="checkbox"/>			
For volatiles in water – is there headspace (> ¼ inch bubble) present? If yes, contact client and note in narrative.			<input checked="" type="checkbox"/>	
Are samples preserved that require preservation and was it checked ⁽¹⁾ ? (note ID of confirmation instrument used in comments) / (preservation is not confirmed for subcontracted analyses in order to insure sample integrity)(pH < 2 for samples preserved with HNO ₃ , HCL, H ₂ SO ₄) / (pH > 10 for samples preserved with NaAsO ₂ +NaOH, ZnAc+NaOH)			<input checked="" type="checkbox"/>	
Additional Comments (if any):				

⁽¹⁾ If NO, then contact the client before proceeding with analysis and note date/time and person contacted as well as the corrective action to in the additional comments (above) and the case narrative.

Reviewed by (Project Manager): JMB

Date/Time Reviewed: 4/8/22

Origins Laboratory, Inc.

J. Bynon

The results in this report apply to the samples analyzed in accordance with the chain of custody document. This analytical report must be reproduced in its entirety.

Eagle Environmental Consulting, Inc.
8000 W 44th Ave
Wheat Ridge CO 80033

Martin C Eckert III
Project Number: -
Project: Noble - Uhrich 14-29

Background-01@2'
3/24/2022 1:03:00PM

Analyte	Result	Min Detection Limit	Reporting Limit	Units	Dilution	Batch	Prepared	Analyzed	Notes
---------	--------	---------------------	-----------------	-------	----------	-------	----------	----------	-------

Waypoint Analytical, LLC.
Y204112-01 (Soil)

Total Metals by 6020B

Arsenic	3.08	0.0855	0.25	mg/Kg	5	L610157	04/11/2022	04/13/2022	
Lead	8.43	0.031	0.25	"	"	"	"	"	
Selenium	0.459	0.103	0.25	"	"	"	"	"	

Origins Laboratory, Inc.



The results in this report apply to the samples analyzed in accordance with the chain of custody document. This analytical report must be reproduced in its entirety.

Eagle Environmental Consulting, Inc.
8000 W 44th Ave
Wheat Ridge CO 80033

Martin C Eckert III
Project Number: -
Project: Noble - Urich 14-29

Background-02@3'
3/24/2022 1:35:00PM

Analyte	Result	Min Detection Limit	Reporting Limit	Units	Dilution	Batch	Prepared	Analyzed	Notes
---------	--------	---------------------	-----------------	-------	----------	-------	----------	----------	-------

Waypoint Analytical, LLC.
Y204112-02 (Soil)

Total Metals by 6020B

Arsenic	2.77	0.0855	0.25	mg/Kg	5	L610157	04/11/2022	04/13/2022	
Selenium	0.35	0.103	0.25	"	"	"	"	"	

Origins Laboratory, Inc.



The results in this report apply to the samples analyzed in accordance with the chain of custody document. This analytical report must be reproduced in its entirety.

Eagle Environmental Consulting, Inc.
 8000 W 44th Ave
 Wheat Ridge CO 80033

Martin C Eckert III
 Project Number: -
 Project: Noble - Uhrich 14-29

Total Metals by 6020B - Quality Control
Waypoint Analytical, LLC.

Analyte	Result	Reporting Limit	Units	Spike Level	Source Result	%REC	%REC Limits	RPD	RPD Limit	Notes
Batch L610157 - 3050B										
MSD (L 85133-MSD-L610157)			Source: 85133			Prepared: 04/11/2022 Analyzed: 04/14/2022				
Selenium	3.54	0.103	mg/Kg	4.66	0.236	71	75-125	11.4	80	*
Lead	11.3	0.031	"	2.33	8.78	108	75-125	0.8	80	
Arsenic	4.83	0.0855	"	2.33	2.61	95	75-125	8.4	80	
MS (L 85133-MS-L610157)			Source: 85133			Prepared: 04/11/2022 Analyzed: 04/14/2022				
Selenium	3.97	0.103	mg/Kg	4.91	0.236	76	75-125			
Lead	11.2	0.031	"	2.45	8.78	99	75-125			
Arsenic	4.44	0.0855	"	2.45	2.61	75	75-125			
LCS (LCS-L610157)						Prepared: 04/11/2022 Analyzed: 04/13/2022				
Selenium	4.74	0.103	mg/Kg	5		95	80-120			
Lead	2.46	0.031	"	2.5		98	80-120			
Arsenic	2.47	0.0855	"	2.5		99	80-120			
LRB (LRB-L610157)						Prepared: 04/11/2022 Analyzed: 04/13/2022				
Selenium	ND	0.25	mg/Kg				-			
Lead	ND	0.25	"				-			
Arsenic	0.182	0.25	"				-			J

Origins Laboratory, Inc.



The results in this report apply to the samples analyzed in accordance with the chain of custody document. This analytical report must be reproduced in its entirety.

Eagle Environmental Consulting, Inc.
8000 W 44th Ave
Wheat Ridge CO 80033

Martin C Eckert III
Project Number: -
Project: Noble - Uhrich 14-29

Notes and Definitions

J Estimated Value. Analyte below reported quantitation limit.

* QC Failure

ND Analyte NOT DETECTED at or above the reporting limit

RPD Relative Percent Difference

All soil results are reported on a wet weight basis.

Origins Laboratory, Inc.



The results in this report apply to the samples analyzed in accordance with the chain of custody document. This analytical report must be reproduced in its entirety.