



Wellbore Schematic Input Report

Well Name: Drake 05N

Original Hole [Land]			Well Header								
MD (ftKB)	Incl (°)	Vertical schematic (actual)	Surface UWI 0512351818		Asset Team 10004090		Production Tree Location Land				
			Original RKB Elevation (ft) 4,765.50		Original KB to Ground (ft) 28.50		Original Spud Date 11/21/2023		Abandon Date		
			Range 64W			Well Sub-Status WO			High Press...		
			Directions To Well WCR 44-51 North ¾ mile East into. Heavy haul needs to arrive and leave from WCR 49. All large trucks need to yield to the school bus pickup and drop off window 6:55-7 and 3:30-3:35 M-F on WCR 51 No Trucks during these times.					Latitude (°) 40.313827		Longitude (°) -104.580232	
			Comment								
			Congressional Location								
			Quarter 3 SW		Quarter 4 NW	Section 17	Township 4	Twnshp N/S Dir N	Range 64	Range E/W Dir W	
			Rig Operator								
			Rig/Unit Supervisor Joel Ehorn								
			Daily Cost Summary								
Sum of Field Est (Cost) 0											
Wellbore Plug Back Total Depths											
		Date	PBTD (ftKB)	Method		Com					
		8/24/2024	18,120	CLEAN OUT		PBTD BASED ON CT MEASUREMENT					
Wellbore Sections											
			Section Des		Hole Size (in)	Top Depth (ftKB)		Btm Depth (ftKB)			
			Surface		13 1/2	14.0					
			Surface		13 1/2	28.5		1,755.5			
			Production		8 1/2	1,755.5		18,598.0			
Zone Statuses											
			Zone Name		Status Date		Status				
			Niobrara B		9/11/2024		Open				
Casing Strings											
Surface, Actual, 1745.9ftKB											
		Casing Description		Run Date	OD (in)	Wt/Len (l...	Grade	Top Depth...	Set Depth...		
		Surface		7/28/2023	9 5/8	36.00	J-55	28.5	1745.9		
Production, Actual, 18584ftKB											
		Casing Description		Run Date	OD (in)	Wt/Len (l...	Grade	Top Depth...	Set Depth...		
		Production		11/24/2023	5 1/2	20.00	P-110	28.5	18584		
Cement											
			Des		Start Date		Top (ftKB)		Btm (ftKB)		
			Surface		7/28/2023		28.5		1,745.9		
			Production Casing Cement		11/25/2023		2,348.0		18,584.0		
Proposed Cement											
			Des				Top (ftKB)		Btm (ftKB)		
Tubing Strings											
		Tubing Description		Run Date	String...	ID (in)	Wt (lb/ft)	Grade	Len (ft)	Set De...	
		Tubing - Production		9/4/2024	2 3/8	1.991	4.70	L-80	406.2 5	6,830.8	
Tubing Components											
		Item Des		OD (in)	Wt (lb/ft)	Grade	Jts	Len (ft)		Btm (ftKB)	Btm (TVD) (ftKB)
		TUBING HANGER		2 3/8		N-80		1.00		7,237.8	6,633.7
		TUBING		2 3/8	4.70	L-80				7,237.8	6,633.7
		X PROFILE		2 3/8	4.70	N-80		0.85		7,238.6	6,634.3
		MIPPLE									
		TUBING		2 3/8	4.70	L-80		396.75		7,635.4	6,828.8
		XN PROFILE		2 3/8	4.70	N-80		0.80		7,636.2	6,829.0
		NIPPLE									
		TUBING PUP JOINT		2 3/8	4.70	N-80		6.10		7,642.3	6,830.6
		RD/MS		2 3/8	4.70	N-80		0.75		7,643.0	6,830.8
Other In Hole											
		Run Date		Des		Make		OD (in)		Top (ftKB)	Btm (ftKB)



Wellbore Schematic Input Report

Well Name: Drake 05N

Original Hole [Land]			Proposed Other In Hole					
MD (ftKB)	Incl (°)	Vertical schematic (actual)	Des		Make	OD (in)	Top (ftKB)	Btm (ftKB)
Logs								
			Date	Type		Depth Top (MD) (ftKB)		Btm (ftKB)
Perforation Data								
			Linked Zone	Sum of Entered Shot Total	Top (ftKB)	Btm (ftKB)	Date	
30.2	0.1	Wellhead, 9 5/8in; 30.1; 28.5 TVD; 1.51; 28.5-30 TVD; 28.5- 30.1	Niobrara B, Original Hole	4	7,886.0	7,887.0	6/24/2024	
1,699.1	21.5	Casing joints, 9 5/8in; 1699.2; 36 TVD; 1,663.11; 36-1673.4 TVD; 36.1-1699.2	Niobrara B, Original Hole	4	7,934.0	7,935.0	6/24/2024	
1,744.4	21.7	Casing joints, 9 5/8in; 1744.5; 1674.6 TVD; 44.00; 1674.6- 1715.5 TVD; 1700.5-1744.5	Niobrara B, Original Hole	4	7,981.0	7,982.0	6/24/2024	
2,348.1	27.3	Casing Joints, 5 1/2in; 3422.7; 28.5 TVD; 3,394.22; 28.5-3218.8 TVD; 28.5-3422.7	Niobrara B, Original Hole	4	8,028.0	8,029.0	6/24/2024	
3,437.7	26.1	Casing Joints, 5 1/2in; 6385.7; 3232.1 TVD; 2,948.20; 3232.1- 5859.4 TVD; 3437.5-6385.7	Niobrara B, Original Hole	4	8,075.0	8,076.0	6/24/2024	
6,396.3	25.7	Casing Joints, 5 1/2in; 7044.8; 5869.1 TVD; 648.35; 5869.1- 6478.7 TVD; 6396.5-7044.8	Niobrara B, Original Hole	4	8,122.0	8,123.0	6/24/2024	
7,046.6	30.8	Casing Joints, 5 1/2in; 7899.8; 6480.1 TVD; 853.30; 6480.1- 6864.2 TVD; 7046.5-7899.8	Niobrara B, Original Hole	4	8,158.0	8,159.0	6/24/2024	
7,237.9	44.8		Niobrara B, Original Hole	4	8,205.0	8,206.0	6/24/2024	
7,635.5	74.4		Niobrara B, Original Hole	4	8,252.0	8,253.0	6/24/2024	
7,642.4	75.0		Niobrara B, Original Hole	4	8,299.0	8,300.0	6/24/2024	
7,876.0	90.4		Niobrara B, Original Hole	4	8,343.0	8,344.0	6/24/2024	
7,910.4	90.0		Niobrara B, Original Hole	4	8,394.0	8,395.0	6/24/2024	
8,158.1	89.8		Niobrara B, Original Hole	4	8,429.0	8,430.0	6/23/2024	
8,429.1	89.8		Niobrara B, Original Hole	4	8,476.0	8,477.0	6/23/2024	
8,700.1	91.2		Niobrara B, Original Hole	4	8,523.0	8,524.0	6/23/2024	
8,972.1	91.1		Niobrara B, Original Hole	4	8,570.0	8,571.0	6/23/2024	
9,243.1	91.0		Niobrara B, Original Hole	4	8,617.0	8,618.0	6/23/2024	
9,514.1	91.3		Niobrara B, Original Hole	4	8,664.0	8,665.0	6/23/2024	
9,785.1	91.7		Niobrara B, Original Hole	4	8,700.0	8,701.0	6/23/2024	
10,057.1	91.3		Niobrara B, Original Hole	4	8,747.0	8,748.0	6/23/2024	
10,328.1	91.3	Casing Joints, 5 1/2in; 13222; 6864.2 TVD; 5,311.40; 6864.2- 6764.8 TVD; 7910.6-13222	Niobrara B, Original Hole	4	8,794.0	8,795.0	6/23/2024	
10,599.1	91.5		Niobrara B, Original Hole	4	8,841.0	8,842.0	6/23/2024	
10,870.1	91.5		Niobrara B, Original Hole	4	8,888.0	8,889.0	6/23/2024	
11,142.1	91.1		Niobrara B, Original Hole	4	8,935.0	8,936.0	6/23/2024	
11,413.1	91.0		Niobrara B, Original Hole	4	8,972.0	8,973.0	6/23/2024	
11,683.1	91.0		Niobrara B, Original Hole	4	9,019.0	9,020.0	6/23/2024	
11,955.1	91.2		Niobrara B, Original Hole	4	9,066.0	9,067.0	6/23/2024	
12,226.0	90.7		Niobrara B, Original Hole	4	9,113.0	9,114.0	6/23/2024	
12,498.0	91.0		Niobrara B, Original Hole	4	9,160.0	9,161.0	6/23/2024	
12,769.0	91.1		Niobrara B, Original Hole	4	9,207.0	9,208.0	6/23/2024	
13,041.0	91.1		Niobrara B, Original Hole	4	9,243.0	9,244.0	6/23/2024	
13,232.3	91.2		Niobrara B, Original Hole	4	9,290.0	9,291.0	6/23/2024	
13,312.0	90.9		Niobrara B, Original Hole	4	9,337.0	9,338.0	6/23/2024	
13,583.0	91.4		Niobrara B, Original Hole	4	9,384.0	9,385.0	6/23/2024	
13,854.0	90.4		Niobrara B, Original Hole	4	9,431.0	9,432.0	6/23/2024	
14,126.0	90.0		Niobrara B, Original Hole	4	9,477.0	9,478.0	6/23/2024	
14,397.0	90.3		Niobrara B, Original Hole	4	9,514.0	9,515.0	6/23/2024	
14,668.0	90.4		Niobrara B, Original Hole	4	9,561.0	9,562.0	6/23/2024	
14,941.9	90.0		Niobrara B, Original Hole	4	9,608.0	9,609.0	6/23/2024	
15,211.0	90.3		Niobrara B, Original Hole	4	9,653.0	9,654.0	6/23/2024	
15,482.0	90.2	Casing Joints, 5 1/2in; 18111.6; 6764.6 TVD; 4,879.39; 6764.6- 6735.6 TVD; 13232.2-18111.6	Niobrara B, Original Hole	4	9,703.0	9,704.0	6/23/2024	
15,753.0	90.2		Niobrara B, Original Hole	4	9,749.0	9,750.0	6/23/2024	
16,024.0	90.1		Niobrara B, Original Hole	4	9,784.0	9,785.0	6/22/2024	
16,295.9	90.0		Niobrara B, Original Hole	4	9,832.0	9,833.0	6/22/2024	
16,566.9	90.2		Niobrara B, Original Hole	4	9,879.0	9,880.0	6/22/2024	
16,839.9	90.2		Niobrara B, Original Hole	4	9,926.0	9,927.0	6/22/2024	
17,108.9	90.1		Niobrara B, Original Hole	4	9,973.0	9,974.0	6/22/2024	
17,380.9	90.3		Niobrara B, Original Hole	4	10,020.0	10,021.0	6/22/2024	
17,651.9	90.3	Casing Pup Joint, 5 1/2in; 18548.5; 6735.5 TVD; 426.01; 6735.5-6732.8 TVD; 18122.5- 18548.5	Niobrara B, Original Hole	4	10,057.0	10,058.0	6/22/2024	
17,922.9	90.3		Niobrara B, Original Hole	4	10,104.0	10,105.0	6/22/2024	
18,120.1	90.3	Wet Shoe Sub, 5 1/2in; 18559.5; 6732.7 TVD; 5.84; 6732.7-6732.7 TVD; 18553.6-18559.5	Niobrara B, Original Hole	4	10,151.0	10,152.0	6/22/2024	
18,160.1	90.2		Niobrara B, Original Hole	4	10,198.0	10,199.0	6/22/2024	
18,518.0	90.4	Float Collar, 5 1/2in; 18571.9; 6732.6 TVD; 1.83; 6732.6-6732.6 TVD; 18570.1-18571.9	Niobrara B, Original Hole	4	10,245.0	10,246.0	6/22/2024	
18,553.5	90.3		Niobrara B, Original Hole	4	10,292.0	10,293.0	6/22/2024	
18,570.2	90.3	Float Shoe, 5 1/2in; 18584; 6732.6 TVD; 1.65; 6732.6-6732.6 TVD; 18582.4-18584	Niobrara B, Original Hole	4				
18,582.3	90.3		Niobrara B, Original Hole	4				



Wellbore Schematic Input Report

Well Name: Drake 05N

Original Hole [Land]			Perforation Data				
MD (ftKB)	Incl (°)	Vertical schematic (actual)	Linked Zone	Sum of Entered Shot Total	Top (ftKB)	Btm (ftKB)	Date
30.2	0.1	Wellhead, 9 5/8in; 30.1; 28.5 TVD; 1.51; 28.5-30 TVD; 28.5-30.1	Niobrara B, Original Hole	4	10,328.0	10,329.0	6/22/2024
1,699.1	21.5	Casing joints, 9 5/8in; 1699.2; 36 TVD; 1,663.11; 36-1673.4 TVD; 36.1-1699.2	Niobrara B, Original Hole	4	10,375.0	10,376.0	6/22/2024
1,744.4	21.7	Casing joints, 9 5/8in; 1744.5; 1674.6 TVD; 44.00; 1674.6-1715.5 TVD; 1700.5-1744.5	Niobrara B, Original Hole	4	10,421.0	10,422.0	6/22/2024
2,348.1	27.3	Casing Joints, 5 1/2in; 3422.7; 28.5 TVD; 3,394.22; 28.5-3218.8 TVD; 28.5-3422.7	Niobrara B, Original Hole	4	10,471.0	10,472.0	6/22/2024
3,437.7	26.1	Casing Joints, 5 1/2in; 6385.7; 3232.1 TVD; 2,948.20; 3232.1-5859.4 TVD; 3437.5-6385.7	Niobrara B, Original Hole	4	10,516.0	10,517.0	6/22/2024
6,396.3	25.7	Casing Joints, 5 1/2in; 7044.8; 5869.1 TVD; 648.35; 5869.1-6478.7 TVD; 6396.5-7044.8	Niobrara B, Original Hole	4	10,563.0	10,564.0	6/22/2024
7,046.6	30.8	Casing Joints, 5 1/2in; 7899.8; 6480.1 TVD; 853.30; 6480.1-6864.2 TVD; 7046.5-7899.8	Niobrara B, Original Hole	4	10,599.0	10,600.0	6/22/2024
7,237.9	44.8		Niobrara B, Original Hole	4	10,646.0	10,647.0	6/22/2024
7,635.5	74.4		Niobrara B, Original Hole	4	10,693.0	10,694.0	6/22/2024
7,642.4	75.0		Niobrara B, Original Hole	4	10,740.0	10,741.0	6/22/2024
7,876.0	90.4		Niobrara B, Original Hole	4	10,787.0	10,788.0	6/22/2024
7,910.4	90.0		Niobrara B, Original Hole	4	10,834.0	10,835.0	6/22/2024
8,158.1	89.8		Niobrara B, Original Hole	4	10,870.0	10,871.0	6/21/2024
8,429.1	89.8		Niobrara B, Original Hole	4	10,917.0	10,918.0	6/21/2024
8,700.1	91.2		Niobrara B, Original Hole	4	10,961.0	10,962.0	6/21/2024
8,972.1	91.1		Niobrara B, Original Hole	4	11,011.0	11,012.0	6/21/2024
9,243.1	91.0		Niobrara B, Original Hole	4	11,058.0	11,059.0	6/21/2024
9,514.1	91.3		Niobrara B, Original Hole	4	11,105.0	11,106.0	6/21/2024
9,785.1	91.7		Niobrara B, Original Hole	4	11,142.0	11,143.0	6/21/2024
10,057.1	91.3		Niobrara B, Original Hole	4	11,189.0	11,190.0	6/21/2024
10,328.1	91.3	Casing Joints, 5 1/2in; 13222; 6864.2 TVD; 5,311.40; 6864.2-6764.8 TVD; 7910.6-13222	Niobrara B, Original Hole	4	11,236.0	11,237.0	6/21/2024
10,599.1	91.5		Niobrara B, Original Hole	4	11,283.0	11,284.0	6/21/2024
10,870.1	91.1		Niobrara B, Original Hole	4	11,283.0	11,284.0	6/21/2024
11,142.1	91.1		Niobrara B, Original Hole	4	11,330.0	11,331.0	6/21/2024
11,413.1	91.0		Niobrara B, Original Hole	4	11,377.0	11,378.0	6/21/2024
11,683.1	91.0		Niobrara B, Original Hole	4	11,413.0	11,414.0	6/21/2024
11,955.1	91.2		Niobrara B, Original Hole	4	11,460.0	11,461.0	6/21/2024
12,226.0	90.7		Niobrara B, Original Hole	4	11,507.0	11,508.0	6/21/2024
12,498.0	91.0		Niobrara B, Original Hole	4	11,554.0	11,555.0	6/21/2024
12,769.0	91.1		Niobrara B, Original Hole	4	11,600.0	11,601.0	6/21/2024
13,041.0	91.1		Niobrara B, Original Hole	4	11,650.0	11,651.0	6/21/2024
13,232.3	91.2		Niobrara B, Original Hole	4	11,683.0	11,684.0	6/21/2024
13,312.0	90.9		Niobrara B, Original Hole	4	11,731.0	11,732.0	6/21/2024
13,583.0	91.4		Niobrara B, Original Hole	4	11,778.0	11,779.0	6/21/2024
13,854.0	90.4		Niobrara B, Original Hole	4	11,825.0	11,826.0	6/21/2024
14,126.0	90.0		Niobrara B, Original Hole	4	11,872.0	11,873.0	6/21/2024
14,397.0	90.3		Niobrara B, Original Hole	4	11,919.0	11,920.0	6/21/2024
14,668.0	90.4		Niobrara B, Original Hole	4	11,955.0	11,956.0	6/20/2024
14,941.9	90.0		Niobrara B, Original Hole	4	12,002.0	12,003.0	6/20/2024
15,211.0	90.3		Niobrara B, Original Hole	4	12,049.0	12,050.0	6/20/2024
15,482.0	90.2	Casing Joints, 5 1/2in; 18111.6; 6764.6 TVD; 4,879.39; 6764.6-6735.6 TVD; 13232.2-18111.6	Niobrara B, Original Hole	4	12,096.0	12,097.0	6/20/2024
15,753.0	90.2		Niobrara B, Original Hole	4	12,143.0	12,144.0	6/20/2024
16,024.0	90.1		Niobrara B, Original Hole	4	12,192.0	12,193.0	6/20/2024
16,295.9	90.0		Niobrara B, Original Hole	4	12,226.0	12,227.0	6/20/2024
16,566.9	90.2		Niobrara B, Original Hole	4	12,276.0	12,277.0	6/20/2024
16,839.9	90.2		Niobrara B, Original Hole	4	12,321.0	12,322.0	6/20/2024
17,108.9	90.1		Niobrara B, Original Hole	4	12,368.0	12,369.0	6/20/2024
17,380.9	90.3		Niobrara B, Original Hole	4	12,415.0	12,416.0	6/20/2024
17,651.9	90.3	Casing Pup Joint, 5 1/2in; 18548.5; 6735.5 TVD; 426.01; 6735.5-6732.8 TVD; 18122.5-18548.5	Niobrara B, Original Hole	4	12,462.0	12,463.0	6/20/2024
17,922.9	90.3		Niobrara B, Original Hole	4	12,498.0	12,499.0	6/20/2024
18,120.1	90.3		Niobrara B, Original Hole	4	12,545.0	12,546.0	6/20/2024
18,160.1	90.2	Wet Shoe Sub, 5 1/2in; 18559.5; 6732.7 TVD; 5.84; 6732.7-6732.7 TVD; 18553.6-18559.5	Niobrara B, Original Hole	4	12,592.0	12,593.0	6/20/2024
18,518.0	90.4		Niobrara B, Original Hole	4	12,639.0	12,640.0	6/20/2024
18,553.5	90.3	Float Collar, 5 1/2in; 18571.9; 6732.6 TVD; 1.83; 6732.6-6732.6 TVD; 18570.1-18571.9	Niobrara B, Original Hole	4	12,686.0	12,687.0	6/20/2024
18,570.2	90.3		Niobrara B, Original Hole	4	12,733.0	12,734.0	6/20/2024
18,582.3	90.3	Float Shoe, 5 1/2in; 18584; 6732.6 TVD; 1.65; 6732.6-6732.6 TVD; 18582.4-18584	Niobrara B, Original Hole	4	12,769.0	12,770.0	6/20/2024
			Niobrara B, Original Hole	4	12,816.0	12,817.0	6/20/2024
			Niobrara B, Original Hole	4	12,863.0	12,864.0	6/20/2024
			Niobrara B, Original Hole	4	12,910.0	12,911.0	6/20/2024
			Niobrara B, Original Hole	4	12,961.0	12,962.0	6/20/2024
			Niobrara B, Original Hole	4	13,005.0	13,006.0	6/20/2024



Wellbore Schematic Input Report

Well Name: Drake 05N

Original Hole [Land]			Perforation Data				
MD (ftKB)	Incl (°)	Vertical schematic (actual)	Linked Zone	Sum of Entered Shot Total	Top (ftKB)	Btm (ftKB)	Date
30.2	0.1	Wellhead, 9 5/8in; 30.1; 28.5 TVD; 1.51; 28.5-30 TVD; 28.5-30.1	Niobrara B, Original Hole	4	13,041.0	13,042.0	6/18/2026
1,699.1	21.5		Niobrara B, Original Hole	4	13,086.0	13,087.0	6/18/2026
1,744.4	21.7	Casing joints, 9 5/8in; 1699.2; 36 TVD; 1,663.11; 36-1673.4 TVD; 36.1-1699.2	Niobrara B, Original Hole	4	13,139.0	13,140.0	6/18/2026
2,348.1	27.3		Niobrara B, Original Hole	4	13,182.0	13,183.0	6/18/2026
3,437.7	26.1	Casing joints, 9 5/8in; 1744.5; 1674.6 TVD; 44.00; 1674.6-1715.5 TVD; 1700.5-1744.5	Niobrara B, Original Hole	4	13,227.0	13,228.0	6/18/2026
6,396.3	25.7		Niobrara B, Original Hole	4	13,272.0	13,273.0	6/18/2026
7,046.6	30.8	Casing Joints, 5 1/2in; 3422.7; 28.5 TVD; 3,394.22; 28.5-3218.8 TVD; 28.5-3422.7	Niobrara B, Original Hole	4	13,312.0	13,313.0	6/18/2024
7,237.9	44.8		Niobrara B, Original Hole	4	13,364.0	13,365.0	6/18/2024
7,635.5	74.4	Casing Joints, 5 1/2in; 6385.7; 3232.1 TVD; 2,948.20; 3232.1-5859.4 TVD; 3437.5-6385.7	Niobrara B, Original Hole	4	13,408.0	13,409.0	6/18/2024
7,642.4	75.0		Niobrara B, Original Hole	4	13,453.0	13,454.0	6/18/2024
7,876.0	90.4	Casing Joints, 5 1/2in; 7044.8; 5869.1 TVD; 648.35; 5869.1-6478.7 TVD; 6396.5-7044.8	Niobrara B, Original Hole	4	13,500.0	13,501.0	6/18/2024
7,910.4	90.0		Niobrara B, Original Hole	4	13,547.0	13,548.0	6/18/2024
8,158.1	89.8	Casing Joints, 5 1/2in; 7899.8; 6480.1 TVD; 853.30; 6480.1-6864.2 TVD; 7046.5-7899.8	Niobrara B, Original Hole	4	13,583.0	13,584.0	6/18/2024
8,429.1	89.8		Niobrara B, Original Hole	4	13,630.0	13,631.0	6/18/2024
8,700.1	91.2		Niobrara B, Original Hole	4	13,677.0	13,678.0	6/18/2024
8,972.1	91.1		Niobrara B, Original Hole	4	13,724.0	13,725.0	6/18/2024
9,243.1	91.0		Niobrara B, Original Hole	4	13,771.0	13,772.0	6/18/2024
9,514.1	91.3		Niobrara B, Original Hole	4	13,818.0	13,819.0	6/18/2024
9,785.1	91.7		Niobrara B, Original Hole	4	13,854.0	13,855.0	6/18/2024
10,057.1	91.3		Niobrara B, Original Hole	4	13,901.0	13,902.0	6/18/2024
10,328.1	91.3		Niobrara B, Original Hole	4	13,948.0	13,949.0	6/18/2024
10,599.1	91.5	Casing Joints, 5 1/2in; 13222; 6864.2 TVD; 5,311.40; 6864.2-6764.8 TVD; 7910.6-13222	Niobrara B, Original Hole	4	13,995.0	13,996.0	6/18/2024
10,870.1	91.1		Niobrara B, Original Hole	4	14,042.0	14,043.0	6/18/2024
11,142.1	91.1		Niobrara B, Original Hole	4	14,089.0	14,090.0	6/18/2024
11,413.1	91.0		Niobrara B, Original Hole	4	14,126.0	14,127.0	6/18/2024
11,683.1	91.0		Niobrara B, Original Hole	4	14,170.0	14,171.0	6/18/2024
11,955.1	91.2		Niobrara B, Original Hole	4	14,222.0	14,223.0	6/18/2024
12,226.0	90.7		Niobrara B, Original Hole	4	14,267.0	14,268.0	6/18/2024
12,498.0	91.0		Niobrara B, Original Hole	4	14,314.0	14,315.0	6/18/2024
12,769.0	91.1		Niobrara B, Original Hole	4	14,361.0	14,362.0	6/18/2024
13,041.0	91.1		Niobrara B, Original Hole	4	14,397.0	14,398.0	6/17/2024
13,232.3	91.2		Niobrara B, Original Hole	4	14,444.0	14,445.0	6/17/2024
13,312.0	90.9		Niobrara B, Original Hole	4	14,491.0	14,492.0	6/17/2024
13,583.0	91.4		Niobrara B, Original Hole	4	14,538.0	14,539.0	6/17/2024
13,854.0	90.4		Niobrara B, Original Hole	4	14,585.0	14,586.0	6/17/2024
14,126.0	90.0		Niobrara B, Original Hole	4	14,632.0	14,633.0	6/17/2024
14,397.0	90.3		Niobrara B, Original Hole	4	14,668.0	14,669.0	6/17/2024
14,668.0	90.4		Niobrara B, Original Hole	4	14,715.0	14,716.0	6/17/2024
14,941.9	90.0		Niobrara B, Original Hole	4	14,762.0	14,763.0	6/17/2024
15,211.0	90.3		Niobrara B, Original Hole	4	14,811.0	14,812.0	6/17/2024
15,482.0	90.2	Casing Joints, 5 1/2in; 18111.6; 6764.6 TVD; 4,879.39; 6764.6-6735.6 TVD; 13232.2-18111.6	Niobrara B, Original Hole	4	14,856.0	14,857.0	6/17/2024
15,753.0	90.2		Niobrara B, Original Hole	4	14,903.0	14,904.0	6/17/2024
16,024.0	90.1		Niobrara B, Original Hole	4	14,942.0	14,943.0	6/17/2024
16,295.9	90.0		Niobrara B, Original Hole	4	14,986.0	14,987.0	6/17/2024
16,566.9	90.2		Niobrara B, Original Hole	4	15,033.0	15,034.0	6/17/2024
16,839.9	90.2		Niobrara B, Original Hole	4	15,080.0	15,081.0	6/17/2024
17,108.9	90.1		Niobrara B, Original Hole	4	15,127.0	15,128.0	6/17/2024
17,380.9	90.3		Niobrara B, Original Hole	4	15,174.0	15,175.0	6/17/2024
17,651.9	90.3		Niobrara B, Original Hole	4	15,211.0	15,212.0	6/16/2024
17,922.9	90.3	Casing Pup Joint, 5 1/2in; 18548.5; 6735.5 TVD; 6732.8 TVD; 18122.5-18548.5	Niobrara B, Original Hole	4	15,258.0	15,259.0	6/16/2024
18,120.1	90.3		Niobrara B, Original Hole	4	15,303.0	15,304.0	6/16/2024
18,160.1	90.2	Wet Shoe Sub, 5 1/2in; 18559.5; 6732.7 TVD; 5.84; 6732.7-6732.7 TVD; 18553.6-18559.5	Niobrara B, Original Hole	4	15,352.0	15,353.0	6/16/2024
18,518.0	90.4		Niobrara B, Original Hole	4	15,399.0	15,400.0	6/16/2024
18,553.5	90.3	Float Collar, 5 1/2in; 18571.9; 6732.6 TVD; 1.83; 6732.6-6732.6 TVD; 18570.1-18571.9	Niobrara B, Original Hole	4	15,446.0	15,447.0	6/16/2024
18,570.2	90.3		Niobrara B, Original Hole	4	15,482.0	15,483.0	6/16/2024
18,582.3	90.3	Float Shoe, 5 1/2in; 18584; 6732.6 TVD; 1.65; 6732.6-6732.6 TVD; 18582.4-18584	Niobrara B, Original Hole	4	15,529.0	15,530.0	6/16/2024
			Niobrara B, Original Hole	4	15,576.0	15,577.0	6/16/2024
			Niobrara B, Original Hole	4	15,623.0	15,624.0	6/16/2024
			Niobrara B, Original Hole	4	15,669.0	15,670.0	6/16/2024
			Niobrara B, Original Hole	4	15,717.0	15,718.0	6/16/2024



Wellbore Schematic Input Report

Well Name: Drake 05N

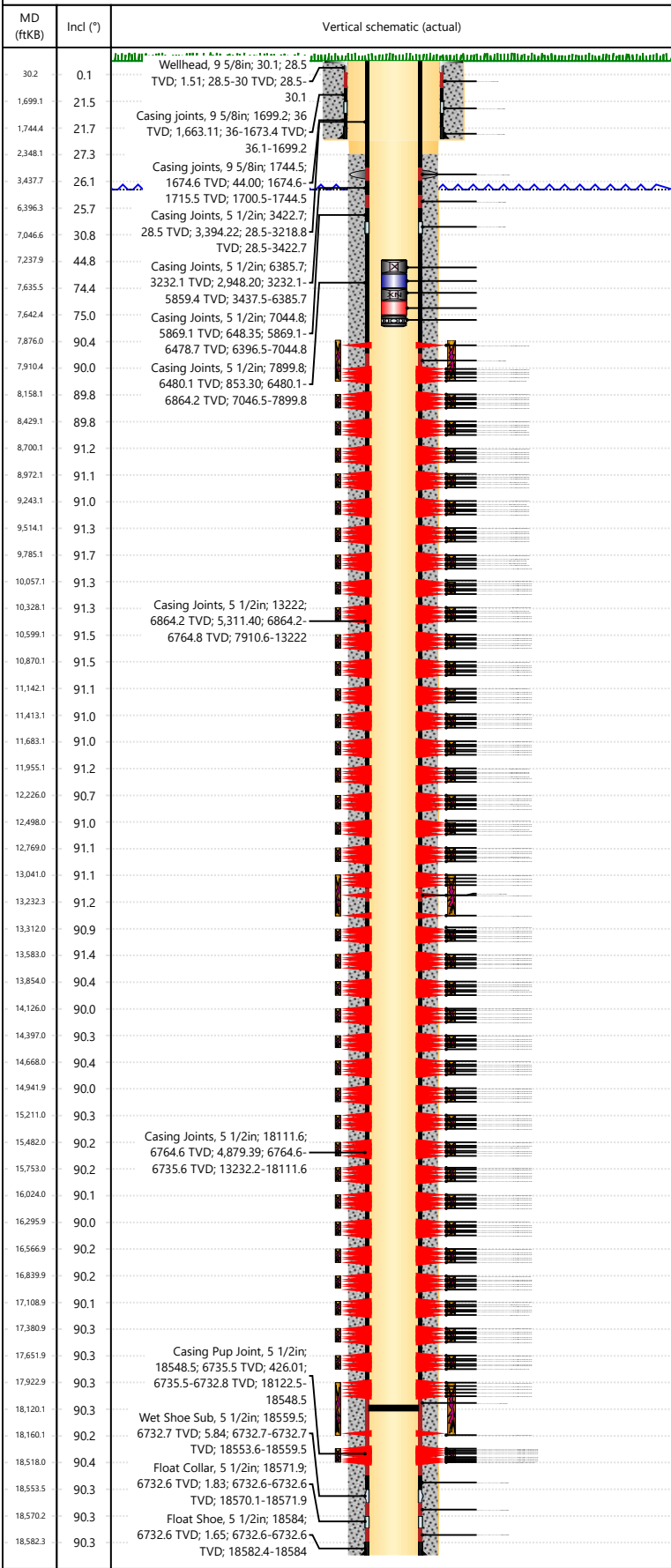
Original Hole [Land]			Perforation Data				
MD (ftKB)	Incl (°)	Vertical schematic (actual)	Linked Zone	Sum of Entered Shot Total	Top (ftKB)	Btm (ftKB)	Date
30.2	0.1	Wellhead, 9 5/8in; 30.1; 28.5 TVD; 1.51; 28.5-30 TVD; 28.5-30.1	Niobrara B, Original Hole	4	15,753.0	15,754.0	6/16/2024
1,699.1	21.5		Niobrara B, Original Hole	4	15,797.0	15,798.0	6/16/2024
1,744.4	21.7	Casing joints, 9 5/8in; 1699.2; 36 TVD; 1,663.11; 36-1673.4 TVD; 36.1-1699.2	Niobrara B, Original Hole	4	15,849.0	15,850.0	6/16/2024
2,348.1	27.3		Niobrara B, Original Hole	4	15,894.0	15,895.0	6/16/2024
3,437.7	26.1	Casing joints, 9 5/8in; 1744.5; 1674.6 TVD; 44.00; 1674.6-1715.5 TVD; 1700.5-1744.5	Niobrara B, Original Hole	4	15,941.0	15,942.0	6/16/2024
6,396.3	25.7		Niobrara B, Original Hole	4	15,988.0	15,989.0	6/16/2024
7,046.6	30.8	Casing Joints, 5 1/2in; 3422.7; 28.5 TVD; 3,394.22; 28.5-3218.8 TVD; 28.5-3422.7	Niobrara B, Original Hole	4	16,024.0	16,025.0	6/15/2024
7,237.9	44.8		Niobrara B, Original Hole	4	16,071.0	16,072.0	6/15/2024
7,635.5	74.4	Casing Joints, 5 1/2in; 6385.7; 3232.1 TVD; 2,948.20; 3232.1-5859.4 TVD; 3437.5-6385.7	Niobrara B, Original Hole	4	16,118.0	16,119.0	6/15/2024
7,642.4	75.0		Niobrara B, Original Hole	4	16,165.0	16,166.0	6/15/2024
7,876.0	90.4	Casing Joints, 5 1/2in; 7044.8; 5869.1 TVD; 648.35; 5869.1-6478.7 TVD; 6396.5-7044.8	Niobrara B, Original Hole	4	16,212.0	16,213.0	6/15/2024
7,910.4	90.0		Niobrara B, Original Hole	4	16,259.0	16,260.0	6/15/2024
8,158.1	89.8	Casing Joints, 5 1/2in; 7899.8; 6480.1 TVD; 853.30; 6480.1-6864.2 TVD; 7046.5-7899.8	Niobrara B, Original Hole	4	16,296.0	16,297.0	6/15/2024
8,429.1	89.8		Niobrara B, Original Hole	4	16,343.0	16,344.0	6/15/2024
8,700.1	91.2		Niobrara B, Original Hole	4	16,390.0	16,391.0	6/15/2024
8,972.1	91.1		Niobrara B, Original Hole	4	16,437.0	16,438.0	6/15/2024
9,243.1	91.0		Niobrara B, Original Hole	4	16,484.0	16,485.0	6/15/2024
9,514.1	91.3		Niobrara B, Original Hole	4	16,528.0	16,529.0	6/15/2024
9,785.1	91.7		Niobrara B, Original Hole	4	16,567.0	16,568.0	6/15/2024
10,057.1	91.3		Niobrara B, Original Hole	4	16,614.0	16,615.0	6/15/2024
10,328.1	91.3	Casing Joints, 5 1/2in; 13222; 6864.2 TVD; 5,311.40; 6864.2-6764.8 TVD; 7910.6-13222	Niobrara B, Original Hole	4	16,660.0	16,661.0	6/15/2024
10,599.1	91.5		Niobrara B, Original Hole	4	16,712.0	16,713.0	6/15/2024
10,870.1	91.1		Niobrara B, Original Hole	4	16,755.0	16,756.0	6/15/2024
11,142.1	91.1		Niobrara B, Original Hole	4	16,802.0	16,803.0	6/15/2024
11,413.1	91.0		Niobrara B, Original Hole	4	16,840.0	16,841.0	6/14/2024
11,683.1	91.0		Niobrara B, Original Hole	4	16,885.0	16,886.0	6/14/2024
11,955.1	91.2		Niobrara B, Original Hole	4	16,932.0	16,933.0	6/14/2024
12,226.0	90.7		Niobrara B, Original Hole	4	16,979.0	16,980.0	6/14/2024
12,498.0	91.0		Niobrara B, Original Hole	4	17,026.0	17,027.0	6/14/2024
12,769.0	91.1		Niobrara B, Original Hole	4	17,070.0	17,071.0	6/14/2024
13,041.0	91.1		Niobrara B, Original Hole	4	17,109.0	17,110.0	6/14/2024
13,232.3	91.2		Niobrara B, Original Hole	4	17,156.0	17,157.0	6/14/2024
13,312.0	90.9		Niobrara B, Original Hole	4	17,203.0	17,204.0	6/14/2024
13,583.0	91.4		Niobrara B, Original Hole	4	17,250.0	17,251.0	6/14/2024
13,854.0	90.4		Niobrara B, Original Hole	4	17,297.0	17,298.0	6/14/2024
14,126.0	90.0		Niobrara B, Original Hole	4	17,344.0	17,345.0	6/14/2024
14,397.0	90.3		Niobrara B, Original Hole	4	17,381.0	17,382.0	6/14/2024
14,668.0	90.4		Niobrara B, Original Hole	4	17,426.0	17,427.0	6/14/2024
14,941.9	90.0		Niobrara B, Original Hole	4	17,478.0	17,479.0	6/14/2024
15,211.0	90.3		Niobrara B, Original Hole	4	17,522.0	17,523.0	6/14/2024
15,482.0	90.2	Casing Joints, 5 1/2in; 18111.6; 6764.6 TVD; 4,879.39; 6764.6-6735.6 TVD; 13232.2-18111.6	Niobrara B, Original Hole	4	17,569.0	17,570.0	6/14/2024
15,753.0	90.2		Niobrara B, Original Hole	4	17,616.0	17,617.0	6/14/2024
16,024.0	90.1		Niobrara B, Original Hole	4	17,652.0	17,653.0	6/13/2024
16,295.9	90.0		Niobrara B, Original Hole	4	17,699.0	17,700.0	6/13/2024
16,566.9	90.2		Niobrara B, Original Hole	4	17,746.0	17,747.0	6/13/2024
16,839.9	90.2		Niobrara B, Original Hole	4	17,793.0	17,794.0	6/13/2024
17,108.9	90.1		Niobrara B, Original Hole	4	17,840.0	17,841.0	6/13/2024
17,380.9	90.3		Niobrara B, Original Hole	4	17,887.0	17,888.0	6/13/2024
17,651.9	90.3	Casing Pup Joint, 5 1/2in; 18548.5; 6735.5 TVD; 426.01; 6735.5-6732.8 TVD; 18122.5-18548.5	Niobrara B, Original Hole	4	17,923.0	17,924.0	6/12/2024
17,922.9	90.3		Niobrara B, Original Hole	4	17,970.0	17,971.0	6/12/2024
18,120.1	90.3		Niobrara B, Original Hole	4	18,017.0	18,018.0	6/12/2024
18,160.1	90.2	Wet Shoe Sub, 5 1/2in; 18559.5; 6732.7 TVD; 5.84; 6732.7-6732.7 TVD; 18553.6-18559.5	Niobrara B, Original Hole	4	18,064.0	18,065.0	6/12/2024
18,518.0	90.4		Niobrara B, Original Hole	4	18,108.0	18,109.0	6/12/2024
18,553.5	90.3	Float Collar, 5 1/2in; 18571.9; 6732.6 TVD; 1.83; 6732.6-6732.6 TVD; 18570.1-18571.9	Niobrara B, Original Hole	4	18,158.0	18,159.0	6/12/2024
18,570.2	90.3		Niobrara B, Original Hole	4	18,202.0	18,203.0	5/26/2024
18,582.3	90.3	Float Shoe, 5 1/2in; 18584; 6732.6 TVD; 1.65; 6732.6-6732.6 TVD; 18582.4-18584	Niobrara B, Original Hole	4	18,247.0	18,248.0	5/26/2024
			Niobrara B, Original Hole	4	18,292.0	18,293.0	5/26/2024
			Niobrara B, Original Hole	4	18,337.0	18,338.0	5/26/2024
			Niobrara B, Original Hole	5	18,382.0	18,383.0	5/26/2024
			Niobrara B, Original Hole	5	18,427.0	18,428.0	5/26/2024



Wellbore Schematic Input Report

Well Name: Drake 05N

Original Hole [Land]



Perforation Data

Linked Zone	Sum of Entered Shot Total	Top (ftKB)	Btm (ftKB)	Date
Niobrara B, Original Hole	5	18,472.0	18,473.0	5/26/2024
Niobrara B, Original Hole	5	18,517.0	18,518.0	5/26/2024
Total	948			

Job Supply Amounts

Supply Item Des	Job Supply Type	Uni...	Job Category	Total...	Total...	Total...

Daily Cost Breakdown by Category

Field Est (Cost)	Description	Note