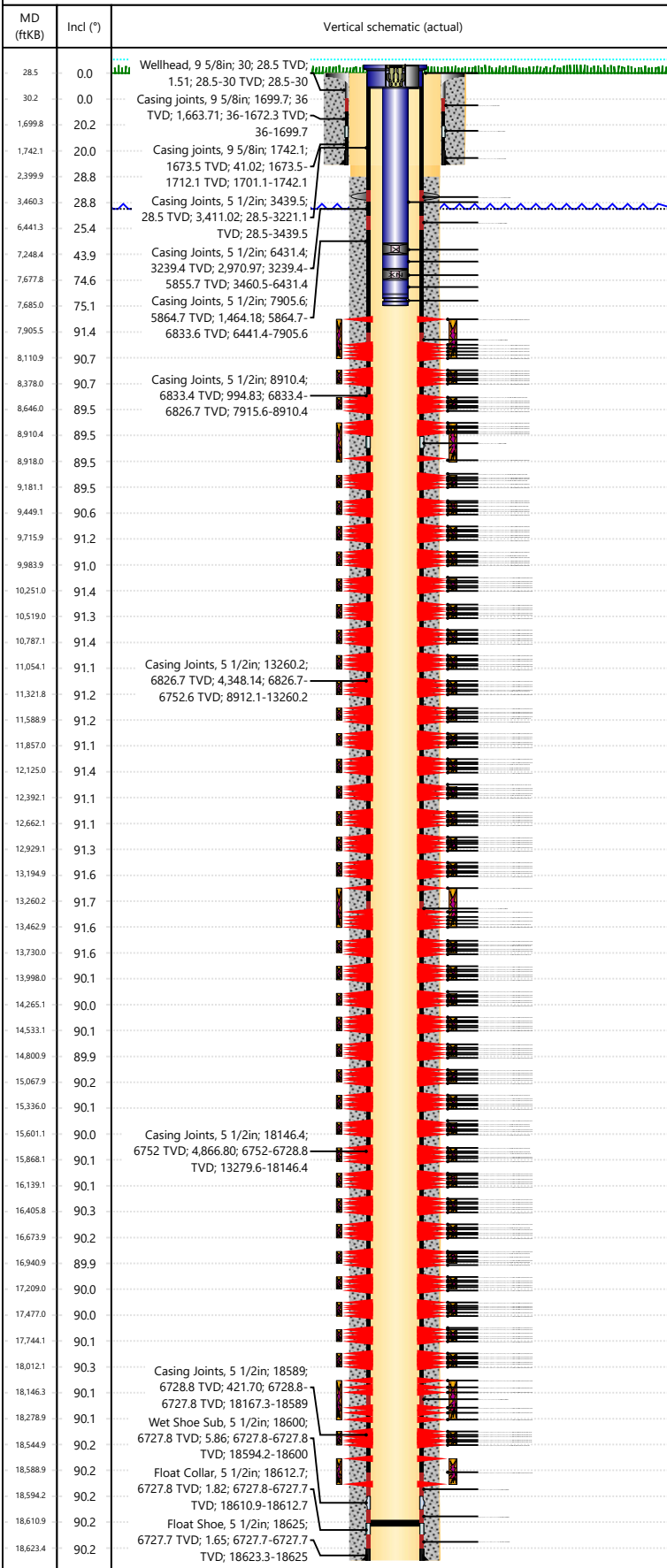




Wellbore Schematic Input Report

Well Name: Drake 17N

Original Hole [Land]



Well Header						
Surface UWI 0512351815		Asset Team 10004088		Production Tree Location Land		
Original RKB Elevation (ft) 4,764.50		Original KB to Ground (ft) 28.50		Original Spud Date 1/12/2024		Abandon Date
Range 64W			Well Sub-Status WO		High Press... N	
Directions To Well WCR 44-51 North ¼ mile East into. Heavy haul needs to arrive and leave from WCR 49. All large trucks need to yield to the school bus pickup and drop off window 6:55-7 and 3:30-3:35 M-F on WCR 51 No Trucks during these times.				Latitude (°) 40.3132096		Longitude (°) -104.5802285
Comment						
Congressional Location						
Quarter 3 SW	Quarter 4 NW	Section 17	Township 4	Twnshp N/S Dir N	Range 64	Range E/W Dir W
Rig Operator						
Rig/Unit Supervisor Joel Ehorn						
Daily Cost Summary						
Sum of Field Est (Cost) 0						
Wellbore Plug Back Total Depths						
Date	PBTD (ftKB)	Method		Com		
1/14/2024	18,611					
Wellbore Sections						
Section Des		Hole Size (in)	Top Depth (ftKB)		Btm Depth (ftKB)	
Surface		13 1/2	14.0			
Surface		13 1/2	28.5		1,753.5	
Production		8 1/2	1,753.5		18,639.0	
Zone Status						
Zone Name		Status Date		Status		
Niobrara B		9/19/2024		Open		
Casing Strings						
Surface, Actual, 1743.5ftKB						
Casing Description		Run Date	OD (in)	Wt/Len (L...)	Grade	Top Depth... Set Depth...
Surface		7/19/2023	9 5/8	36.00	J-55	28.5 1743.5
Production, Actual, 18625ftKB						
Casing Description		Run Date	OD (in)	Wt/Len (L...)	Grade	Top Depth... Set Depth...
Production		1/14/2024	5 1/2	20.00	P-110	28.5 18625
Cement						
Des		Start Date	Top (ftKB)		Btm (ftKB)	
Surface		7/19/2023	28.5		1,743.5	
Production Casing Cement		1/15/2024	2,400.0		18,625.0	
Proposed Cement						
Des		Top (ftKB)		Btm (ftKB)		
Tubing Strings						
Tubing Description		Run Date	String...	ID (in)	Wt (lb/ft)	Grade Len (ft) Set De...
Tubing - Production		8/21/2024	2 3/8	1.995	4.70	L-80 7,656.97 6,812.0
Tubing Components						
Item Des		OD (in)	Wt (lb/ft)	Grade	Jts	Len (ft) Btm (ftKB) Btm (TVD) (ftKB)
TUBING HANGER		6	1.14	N-80	1	1.00 29.0 29.0
Tubing		2 3/8	4.70	L-80	219	7,218.47 7,247.5 6,601.4
X-PROFILE NIPPLE		2 3/8		N-80	1	0.95 7,248.5 6,602.1
Tubing		2 3/8	4.70	L-80	13	427.98 7,676.4 6,809.7
XN PROFILE NIPPLE		2 3/8		N-80	1	1.50 7,677.9 6,810.1
TUBING PUP JT		2 3/8	4.70	L-80	1	6.10 7,684.0 6,811.7
MULE SHOW RUTURE DISC		2 3/8		N-80	1	0.97 7,685.0 6,812.0
Other In Hole						
Run Date		Des		Make	OD (in)	Top (ftKB) Btm (ftKB)

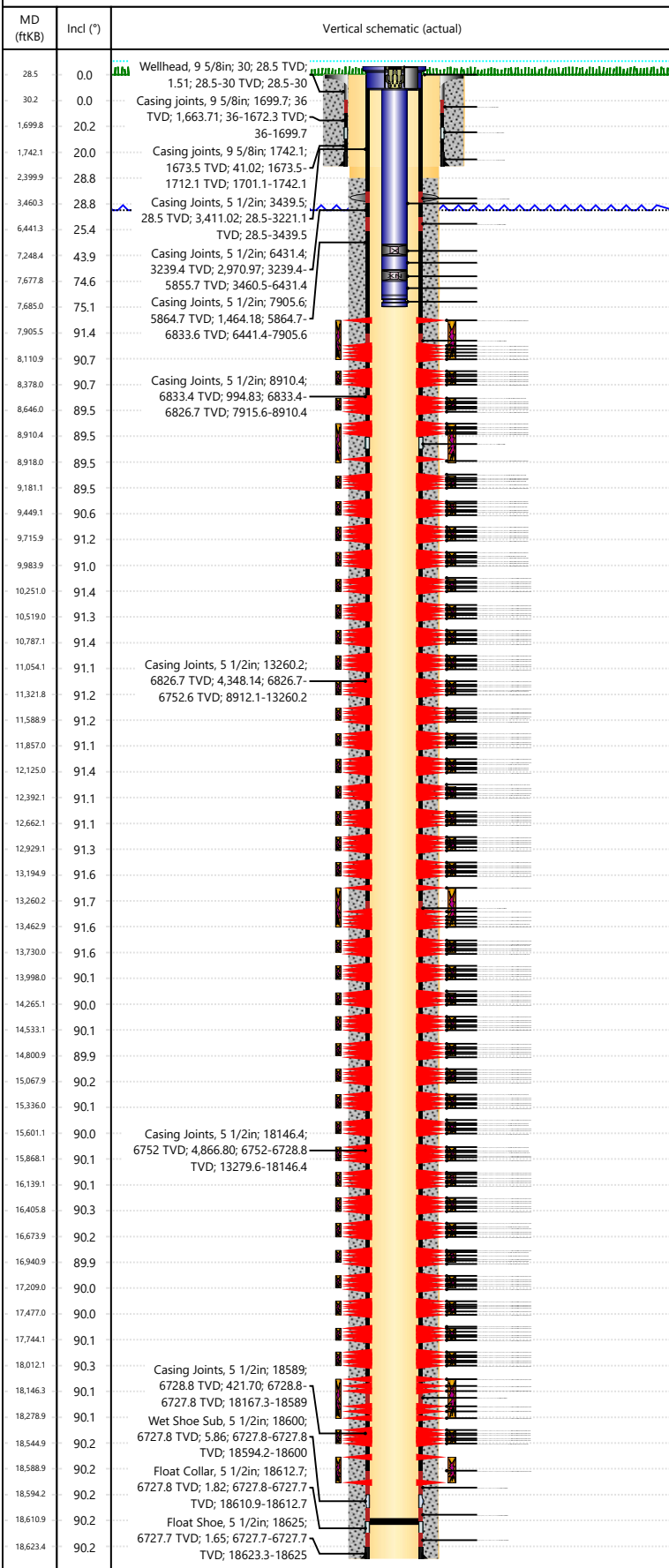


Wellbore Schematic Input Report

Well Name: Drake 17N

Original Hole [Land]

Proposed Other In Hole



Des	Make	OD (in)	Top (ftKB)	Btm (ftKB)
-----	------	---------	------------	------------

Logs

Date	Type	Depth Top (MD) (ftKB)	Btm (ftKB)
------	------	-----------------------	------------

Perforation Data

Linked Zone	Sum of Entered Shot Total	Top (ftKB)	Btm (ftKB)	Date
Niobrara B, Original Hole	4	7,879.0	7,880.0	7/22/2024
Niobrara B, Original Hole	4	7,925.0	7,926.0	7/22/2024
Niobrara B, Original Hole	4	7,971.0	7,972.0	7/22/2024
Niobrara B, Original Hole	4	8,017.0	8,018.0	7/22/2024
Niobrara B, Original Hole	4	8,063.0	8,064.0	7/22/2024
Niobrara B, Original Hole	4	8,110.0	8,111.0	7/22/2024
Niobrara B, Original Hole	4	8,146.0	8,147.0	7/22/2024
Niobrara B, Original Hole	4	8,192.0	8,193.0	7/22/2024
Niobrara B, Original Hole	4	8,238.0	8,239.0	7/22/2024
Niobrara B, Original Hole	4	8,284.0	8,285.0	7/22/2024
Niobrara B, Original Hole	4	8,330.0	8,331.0	7/22/2024
Niobrara B, Original Hole	4	8,377.0	8,378.0	7/22/2024
Niobrara B, Original Hole	4	8,414.0	8,415.0	7/21/2024
Niobrara B, Original Hole	4	8,460.0	8,461.0	7/21/2024
Niobrara B, Original Hole	4	8,506.0	8,507.0	7/21/2024
Niobrara B, Original Hole	4	8,552.0	8,553.0	7/21/2024
Niobrara B, Original Hole	4	8,598.0	8,599.0	7/21/2024
Niobrara B, Original Hole	4	8,645.0	8,646.0	7/21/2024
Niobrara B, Original Hole	4	8,681.0	8,682.0	7/21/2024
Niobrara B, Original Hole	4	8,727.0	8,728.0	7/21/2024
Niobrara B, Original Hole	4	8,773.0	8,774.0	7/21/2024
Niobrara B, Original Hole	4	8,819.0	8,820.0	7/21/2024
Niobrara B, Original Hole	4	8,863.0	8,864.0	7/21/2024
Niobrara B, Original Hole	4	8,917.0	8,918.0	7/21/2024
Niobrara B, Original Hole	4	8,949.0	8,950.0	7/21/2024
Niobrara B, Original Hole	4	8,995.0	8,996.0	7/21/2024
Niobrara B, Original Hole	4	9,041.0	9,042.0	7/21/2024
Niobrara B, Original Hole	4	9,084.0	9,085.0	7/21/2024
Niobrara B, Original Hole	4	9,129.0	9,130.0	7/21/2024
Niobrara B, Original Hole	4	9,180.0	9,181.0	7/21/2024
Niobrara B, Original Hole	4	9,217.0	9,218.0	7/21/2024
Niobrara B, Original Hole	4	9,260.0	9,261.0	7/21/2024
Niobrara B, Original Hole	4	9,309.0	9,310.0	7/21/2024
Niobrara B, Original Hole	4	9,355.0	9,356.0	7/21/2024
Niobrara B, Original Hole	4	9,401.0	9,402.0	7/21/2024
Niobrara B, Original Hole	4	9,448.0	9,449.0	7/21/2024
Niobrara B, Original Hole	4	9,484.0	9,485.0	7/20/2024
Niobrara B, Original Hole	4	9,530.0	9,531.0	7/20/2024
Niobrara B, Original Hole	4	9,576.0	9,577.0	7/20/2024
Niobrara B, Original Hole	4	9,622.0	9,623.0	7/20/2024
Niobrara B, Original Hole	4	9,668.0	9,669.0	7/20/2024
Niobrara B, Original Hole	4	9,715.0	9,716.0	7/20/2024
Niobrara B, Original Hole	4	9,752.0	9,753.0	7/20/2024
Niobrara B, Original Hole	4	9,798.0	9,799.0	7/20/2024
Niobrara B, Original Hole	4	9,844.0	9,845.0	7/20/2024
Niobrara B, Original Hole	4	9,890.0	9,891.0	7/20/2024
Niobrara B, Original Hole	4	9,936.0	9,937.0	7/20/2024
Niobrara B, Original Hole	4	9,983.0	9,984.0	7/20/2024
Niobrara B, Original Hole	4	10,019.0	10,020.0	7/19/2024
Niobrara B, Original Hole	4	10,065.0	10,066.0	7/19/2024
Niobrara B, Original Hole	4	10,111.0	10,112.0	7/19/2024
Niobrara B, Original Hole	4	10,157.0	10,158.0	7/19/2024
Niobrara B, Original Hole	4	10,203.0	10,204.0	7/19/2024
Niobrara B, Original Hole	4	10,250.0	10,251.0	7/19/2024



Wellbore Schematic Input Report

Well Name: Drake 17N

Original Hole [Land]			Perforation Data				
MD (ftKB)	Incl (°)	Vertical schematic (actual)	Linked Zone	Sum of Entered Shot Total	Top (ftKB)	Btm (ftKB)	Date
28.5	0.0	Wellhead, 9 5/8in; 30; 28.5 TVD;	Niobrara B, Original Hole	4	10,287.0	10,288.0	7/19/2024
		1.51; 28.5-30 TVD; 28.5-30	Niobrara B, Original Hole	4	10,333.0	10,334.0	7/19/2024
30.2	0.0	Casing joints, 9 5/8in; 1699.7; 36	Niobrara B, Original Hole	4	10,379.0	10,380.0	7/19/2024
1,699.8	20.2	TVD; 1,663.71; 36-1672.3 TVD;	Niobrara B, Original Hole	4	10,424.0	10,425.0	7/19/2024
		36-1699.7	Niobrara B, Original Hole	4	10,473.0	10,474.0	7/19/2024
1,742.1	20.0	Casing joints, 9 5/8in; 1742.1;	Niobrara B, Original Hole	4	10,518.0	10,519.0	7/19/2024
2,399.9	28.8	1673.5 TVD; 41.02; 1673.5-	Niobrara B, Original Hole	4	10,555.0	10,556.0	7/19/2024
		1712.1 TVD; 1701.1-1742.1	Niobrara B, Original Hole	4	10,601.0	10,602.0	7/19/2024
3,460.3	28.8	Casing Joints, 5 1/2in; 3439.5;	Niobrara B, Original Hole	4	10,647.0	10,648.0	7/19/2024
		28.5 TVD; 3,411.02; 28.5-3221.1	Niobrara B, Original Hole	4	10,693.0	10,694.0	7/19/2024
6,441.3	25.4	TVD; 28.5-3439.5	Niobrara B, Original Hole	4	10,739.0	10,740.0	7/19/2024
7,248.4	43.9	Casing Joints, 5 1/2in; 6431.4;	Niobrara B, Original Hole	4	10,786.0	10,787.0	7/19/2024
		3239.4 TVD; 2,970.97; 3239.4-	Niobrara B, Original Hole	4	10,822.0	10,823.0	7/19/2024
7,677.8	74.6	5855.7 TVD; 3460.5-6431.4	Niobrara B, Original Hole	4	10,868.0	10,869.0	7/19/2024
7,685.0	75.1	Casing Joints, 5 1/2in; 7905.6;	Niobrara B, Original Hole	4	10,914.0	10,915.0	7/19/2024
		5864.7 TVD; 1,464.18; 5864.7-	Niobrara B, Original Hole	4	10,960.0	10,961.0	7/19/2024
7,905.5	91.4	6833.6 TVD; 6441.4-7905.6	Niobrara B, Original Hole	4	11,006.0	11,007.0	7/19/2024
8,110.9	90.7		Niobrara B, Original Hole	4	11,053.0	11,054.0	7/19/2024
8,378.0	90.7	Casing Joints, 5 1/2in; 8910.4;	Niobrara B, Original Hole	4	11,090.0	11,091.0	7/18/2024
		6833.4 TVD; 994.83; 6833.4-	Niobrara B, Original Hole	4	11,136.0	11,137.0	7/18/2024
8,646.0	89.5	6826.7 TVD; 7915.6-8910.4	Niobrara B, Original Hole	4	11,182.0	11,183.0	7/18/2024
8,910.4	89.5		Niobrara B, Original Hole	4	11,228.0	11,229.0	7/18/2024
8,918.0	89.5		Niobrara B, Original Hole	4	11,274.0	11,275.0	7/18/2024
9,181.1	89.5		Niobrara B, Original Hole	4	11,321.0	11,322.0	7/18/2024
9,449.1	90.6		Niobrara B, Original Hole	4	11,354.0	11,355.0	7/18/2024
9,715.9	91.2		Niobrara B, Original Hole	4	11,403.0	11,404.0	7/18/2024
9,983.9	91.0		Niobrara B, Original Hole	4	11,449.0	11,450.0	7/18/2024
10,251.0	91.4		Niobrara B, Original Hole	4	11,495.0	11,496.0	7/18/2024
10,519.0	91.3		Niobrara B, Original Hole	4	11,541.0	11,542.0	7/18/2024
10,787.1	91.4		Niobrara B, Original Hole	4	11,588.0	11,589.0	7/18/2024
11,054.1	91.1	Casing Joints, 5 1/2in; 13260.2;	Niobrara B, Original Hole	4	11,625.0	11,626.0	7/18/2024
		6826.7 TVD; 4,348.14; 6826.7-	Niobrara B, Original Hole	4	11,671.0	11,672.0	7/18/2024
11,321.8	91.2	6752.6 TVD; 8912.1-13260.2	Niobrara B, Original Hole	4	11,717.0	11,718.0	7/18/2024
11,588.9	91.2		Niobrara B, Original Hole	4	11,763.0	11,764.0	7/18/2024
11,857.0	91.1		Niobrara B, Original Hole	4	11,809.0	11,810.0	7/18/2024
12,125.0	91.4		Niobrara B, Original Hole	4	11,856.0	11,857.0	7/18/2024
12,392.1	91.1		Niobrara B, Original Hole	4	11,893.0	11,894.0	7/17/2024
12,662.1	91.1		Niobrara B, Original Hole	4	11,939.0	11,940.0	7/17/2024
12,929.1	91.3		Niobrara B, Original Hole	4	11,985.0	11,986.0	7/17/2024
13,194.9	91.6		Niobrara B, Original Hole	4	12,031.0	12,032.0	7/17/2024
13,260.2	91.7		Niobrara B, Original Hole	4	12,077.0	12,078.0	7/17/2024
13,462.9	91.6		Niobrara B, Original Hole	4	12,124.0	12,125.0	7/17/2024
13,730.0	91.6		Niobrara B, Original Hole	4	12,160.0	12,161.0	7/17/2024
13,998.0	90.1		Niobrara B, Original Hole	4	12,206.0	12,207.0	7/17/2024
14,265.1	90.0		Niobrara B, Original Hole	4	12,252.0	12,253.0	7/17/2024
14,533.1	90.1		Niobrara B, Original Hole	4	12,298.0	12,299.0	7/17/2024
14,800.9	89.9		Niobrara B, Original Hole	4	12,344.0	12,345.0	7/17/2024
15,067.9	90.2		Niobrara B, Original Hole	4	12,391.0	12,392.0	7/17/2024
15,336.0	90.1		Niobrara B, Original Hole	4	12,428.0	12,429.0	7/17/2024
15,601.1	90.0		Niobrara B, Original Hole	4	12,474.0	12,475.0	7/17/2024
15,868.1	90.1	Casing Joints, 5 1/2in; 18146.4;	Niobrara B, Original Hole	4	12,520.0	12,521.0	7/17/2024
		6752 TVD; 4,866.80; 6752-6728.8	Niobrara B, Original Hole	4	12,566.0	12,567.0	7/17/2024
16,139.1	90.1	TVD; 13279.6-18146.4	Niobrara B, Original Hole	4	12,610.0	12,611.0	7/17/2024
16,405.8	90.3		Niobrara B, Original Hole	4	12,661.0	12,662.0	7/17/2024
16,673.9	90.2		Niobrara B, Original Hole	4	12,695.0	12,696.0	7/16/2024
16,940.9	89.9		Niobrara B, Original Hole	4	12,741.0	12,742.0	7/16/2024
17,209.0	90.0		Niobrara B, Original Hole	4	12,787.0	12,788.0	7/16/2024
17,477.0	90.0		Niobrara B, Original Hole	4	12,831.0	12,832.0	7/16/2024
17,744.1	90.1		Niobrara B, Original Hole	4	12,879.0	12,880.0	7/16/2024
18,012.1	90.3		Niobrara B, Original Hole	4	12,928.0	12,929.0	7/16/2024
18,146.3	90.1	Casing Joints, 5 1/2in; 18589;	Niobrara B, Original Hole	4			
		6728.8 TVD; 421.70; 6728.8-					
18,278.9	90.1	6727.8 TVD; 18167.3-18589					
18,544.9	90.2	Wet Shoe Sub, 5 1/2in; 18600;					
		6727.8 TVD; 5.86; 6727.8-6727.8					
18,588.9	90.2	TVD; 18594.2-18600					
18,594.2	90.2	Float Collar, 5 1/2in; 18612.7;					
		6727.8 TVD; 1.82; 6727.8-6727.7					
18,610.9	90.2	TVD; 18610.9-18612.7					
18,623.4	90.2	Float Shoe, 5 1/2in; 18625;					
		6727.7 TVD; 1.65; 6727.7-6727.7					
		TVD; 18623.3-18625					



Wellbore Schematic Input Report

Well Name: Drake 17N

Original Hole [Land]			Perforation Data				
MD (ftKB)	Incl (°)	Vertical schematic (actual)	Linked Zone	Sum of Entered Shot Total	Top (ftKB)	Btm (ftKB)	Date
28.5	0.0	Wellhead, 9 5/8in; 30; 28.5 TVD;	Niobrara B, Original Hole	4	12,961.0	12,962.0	7/16/2024
		1.51; 28.5-30 TVD; 28.5-30	Niobrara B, Original Hole	4	13,012.0	13,013.0	7/16/2024
30.2	0.0	Casing joints, 9 5/8in; 1699.7; 36	Niobrara B, Original Hole	4	13,055.0	13,056.0	7/16/2024
1,699.8	20.2	TVD; 1,663.71; 36-1672.3 TVD;	Niobrara B, Original Hole	4	13,101.0	13,102.0	7/16/2024
		36-1699.7	Niobrara B, Original Hole	4	13,147.0	13,148.0	7/16/2024
1,742.1	20.0	Casing joints, 9 5/8in; 1742.1;	Niobrara B, Original Hole	4	13,194.0	13,195.0	7/16/2024
2,399.9	28.8	1673.5 TVD; 41.02; 1673.5-	Niobrara B, Original Hole	4	13,231.0	13,232.0	7/16/2024
3,460.3	28.8	1712.1 TVD; 1701.1-1742.1	Niobrara B, Original Hole	4	13,276.0	13,277.0	7/16/2024
6,441.3	25.4	Casing Joints, 5 1/2in; 3439.5;	Niobrara B, Original Hole	4	13,324.0	13,325.0	7/16/2024
7,248.4	43.9	28.5 TVD; 3,411.02; 28.5-3221.1	Niobrara B, Original Hole	4	13,369.0	13,370.0	7/16/2024
7,677.8	74.6	TVD; 28.5-3439.5	Niobrara B, Original Hole	4	13,415.0	13,416.0	7/16/2024
7,685.0	75.1	Casing Joints, 5 1/2in; 6431.4;	Niobrara B, Original Hole	4	13,462.0	13,463.0	7/16/2024
7,905.5	91.4	3239.4 TVD; 2,970.97; 3239.4-	Niobrara B, Original Hole	4	13,498.0	13,499.0	7/16/2024
		5855.7 TVD; 3460.5-6431.4	Niobrara B, Original Hole	4	13,544.0	13,545.0	7/16/2024
8,110.9	90.7	Casing Joints, 5 1/2in; 7905.6;	Niobrara B, Original Hole	4	13,590.0	13,591.0	7/16/2024
8,378.0	90.7	5864.7 TVD; 1,464.18; 5864.7-	Niobrara B, Original Hole	4	13,636.0	13,637.0	7/16/2024
8,646.0	89.5	6833.6 TVD; 6441.4-7905.6	Niobrara B, Original Hole	4	13,682.0	13,683.0	7/16/2024
8,910.4	89.5	Casing Joints, 5 1/2in; 8910.4;	Niobrara B, Original Hole	4	13,729.0	13,730.0	7/16/2024
8,918.0	89.5	6833.4 TVD; 994.83; 6833.4-	Niobrara B, Original Hole	4	13,766.0	13,767.0	7/15/2024
9,181.1	89.5	6826.7 TVD; 7915.6-8910.4	Niobrara B, Original Hole	4	13,812.0	13,813.0	7/15/2024
9,449.1	90.6		Niobrara B, Original Hole	4	13,858.0	13,859.0	7/15/2024
9,715.9	91.2		Niobrara B, Original Hole	4	13,904.0	13,905.0	7/15/2024
9,983.9	91.0		Niobrara B, Original Hole	4	13,950.0	13,951.0	7/15/2024
10,251.0	91.4		Niobrara B, Original Hole	4	13,997.0	13,998.0	7/15/2024
10,519.0	91.3		Niobrara B, Original Hole	4	14,033.0	14,034.0	7/15/2024
10,787.1	91.4		Niobrara B, Original Hole	4	14,079.0	14,080.0	7/15/2024
11,054.1	91.1	Casing Joints, 5 1/2in; 13260.2;	Niobrara B, Original Hole	4	14,125.0	14,126.0	7/15/2024
11,321.8	91.2	6826.7 TVD; 4,348.14; 6826.7-	Niobrara B, Original Hole	4	14,171.0	14,172.0	7/15/2024
11,588.9	91.2	6752.6 TVD; 8912.1-13260.2	Niobrara B, Original Hole	4	14,217.0	14,218.0	7/15/2024
11,857.0	91.1		Niobrara B, Original Hole	4	14,264.0	14,265.0	7/15/2024
12,125.0	91.4		Niobrara B, Original Hole	4	14,301.0	14,302.0	7/14/2024
12,392.1	91.1		Niobrara B, Original Hole	4	14,347.0	14,348.0	7/14/2024
12,662.1	91.1		Niobrara B, Original Hole	4	14,393.0	14,394.0	7/14/2024
12,929.1	91.3		Niobrara B, Original Hole	4	14,439.0	14,440.0	7/14/2024
13,194.9	91.6		Niobrara B, Original Hole	4	14,485.0	14,486.0	7/14/2024
13,260.2	91.7		Niobrara B, Original Hole	4	14,532.0	14,533.0	7/14/2024
13,462.9	91.6		Niobrara B, Original Hole	4	14,569.0	14,570.0	7/13/2024
13,730.0	91.6		Niobrara B, Original Hole	4	14,615.0	14,616.0	7/13/2024
13,998.0	90.1		Niobrara B, Original Hole	4	14,661.0	14,662.0	7/13/2024
14,265.1	90.0		Niobrara B, Original Hole	4	14,707.0	14,708.0	7/13/2024
14,533.1	90.1		Niobrara B, Original Hole	4	14,753.0	14,754.0	7/13/2024
14,800.9	89.9		Niobrara B, Original Hole	4	14,800.0	14,801.0	7/13/2024
15,067.9	90.2		Niobrara B, Original Hole	4	14,836.0	14,837.0	7/13/2024
15,336.0	90.1		Niobrara B, Original Hole	4	14,882.0	14,883.0	7/13/2024
15,601.1	90.0	Casing Joints, 5 1/2in; 18146.4;	Niobrara B, Original Hole	4	14,928.0	14,929.0	7/13/2024
15,868.1	90.1	6752 TVD; 4,866.80; 6752-6728.8	Niobrara B, Original Hole	4	14,974.0	14,975.0	7/13/2024
16,139.1	90.1	TVD; 13279.6-18146.4	Niobrara B, Original Hole	4	15,020.0	15,021.0	7/13/2024
16,405.8	90.3		Niobrara B, Original Hole	4	15,067.0	15,068.0	7/13/2024
16,673.9	90.2		Niobrara B, Original Hole	4	15,104.0	15,105.0	7/13/2024
16,940.9	89.9		Niobrara B, Original Hole	4	15,150.0	15,151.0	7/13/2024
17,209.0	90.0		Niobrara B, Original Hole	4	15,196.0	15,197.0	7/13/2024
17,477.0	90.0		Niobrara B, Original Hole	4	15,242.0	15,243.0	7/13/2024
17,744.1	90.1		Niobrara B, Original Hole	4	15,288.0	15,289.0	7/13/2024
18,012.1	90.3	Casing Joints, 5 1/2in; 18589;	Niobrara B, Original Hole	4	15,335.0	15,336.0	7/13/2024
18,146.3	90.1	6728.8 TVD; 421.70; 6728.8-	Niobrara B, Original Hole	4	15,371.0	15,372.0	7/13/2024
18,278.9	90.1	6727.8 TVD; 18167.3-18589	Niobrara B, Original Hole	4	15,417.0	15,418.0	7/13/2024
18,544.9	90.2	Wet Shoe Sub, 5 1/2in; 18600;	Niobrara B, Original Hole	4	15,463.0	15,464.0	7/13/2024
18,588.9	90.2	6727.8 TVD; 5.86; 6727.8-6727.8	Niobrara B, Original Hole	4	15,509.0	15,510.0	7/13/2024
18,594.2	90.2	TVD; 18594.2-18600	Niobrara B, Original Hole	4	15,555.0	15,556.0	7/13/2024
18,594.2	90.2	Float Collar, 5 1/2in; 18612.7;	Niobrara B, Original Hole	4	15,600.0	15,601.0	7/13/2024
18,594.2	90.2	6727.8 TVD; 1.82; 6727.8-6727.7					
18,610.9	90.2	TVD; 18610.9-18612.7					
18,623.4	90.2	Float Shoe, 5 1/2in; 18625;					
		6727.7 TVD; 1.65; 6727.7-6727.7					
		TVD; 18623.3-18625					



Wellbore Schematic Input Report

Well Name: Drake 17N

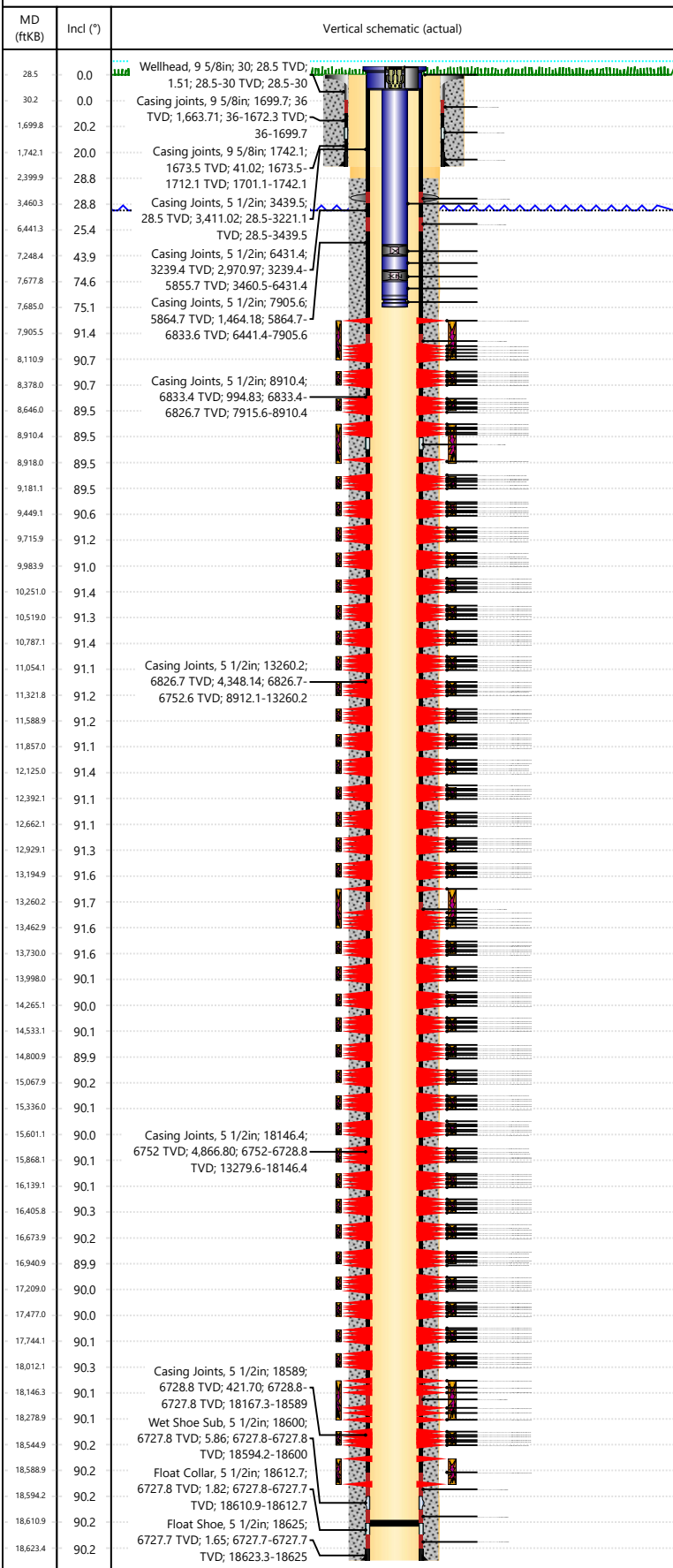
Original Hole [Land]			Perforation Data				
MD (ftKB)	Incl (°)	Vertical schematic (actual)	Linked Zone	Sum of Entered Shot Total	Top (ftKB)	Btm (ftKB)	Date
28.5	0.0	Wellhead, 9 5/8in; 30; 28.5 TVD;	Niobrara B, Original Hole	4	15,639.0	15,640.0	7/13/2024
		1.51; 28.5-30 TVD; 28.5-30	Niobrara B, Original Hole	4	15,685.0	15,686.0	7/13/2024
30.2	0.0	Casing joints, 9 5/8in; 1699.7; 36	Niobrara B, Original Hole	4	15,731.0	15,732.0	7/13/2024
1,699.8	20.2	TVD; 1,663.71; 36-1672.3 TVD;	Niobrara B, Original Hole	4	15,777.0	15,778.0	7/13/2024
		36-1699.7	Niobrara B, Original Hole	4	15,823.0	15,824.0	7/13/2024
1,742.1	20.0	Casing joints, 9 5/8in; 1742.1;	Niobrara B, Original Hole	4	15,867.0	15,868.0	7/13/2024
2,399.9	28.8	1673.5 TVD; 41.02; 1673.5-	Niobrara B, Original Hole	4	15,910.0	15,911.0	7/12/2024
		1712.1 TVD; 1701.1-1742.1	Niobrara B, Original Hole	4	15,953.0	15,954.0	7/12/2024
3,460.3	28.8	Casing Joints, 5 1/2in; 3439.5;	Niobrara B, Original Hole	4	15,999.0	16,000.0	7/12/2024
6,441.3	25.4	28.5 TVD; 3,411.02; 28.5-3221.1	Niobrara B, Original Hole	4	16,045.0	16,046.0	7/12/2024
7,248.4	43.9	TVD; 28.5-3439.5	Niobrara B, Original Hole	4	16,091.0	16,092.0	7/12/2024
7,677.8	74.6	Casing Joints, 5 1/2in; 6431.4;	Niobrara B, Original Hole	4	16,138.0	16,139.0	7/12/2024
7,685.0	75.1	3239.4 TVD; 2,970.97; 3239.4-	Niobrara B, Original Hole	4	16,174.0	16,175.0	7/12/2024
7,905.5	91.4	5855.7 TVD; 3460.5-6431.4	Niobrara B, Original Hole	4	16,220.0	16,221.0	7/12/2024
		Casing Joints, 5 1/2in; 7905.6;	Niobrara B, Original Hole	4	16,266.0	16,267.0	7/12/2024
		5864.7 TVD; 1,464.18; 5864.7-	Niobrara B, Original Hole	4	16,312.0	16,313.0	7/12/2024
		6833.6 TVD; 6441.4-7905.6	Niobrara B, Original Hole	4	16,358.0	16,359.0	7/12/2024
8,110.9	90.7		Niobrara B, Original Hole	4	16,405.0	16,406.0	7/12/2024
8,378.0	90.7	Casing Joints, 5 1/2in; 8910.4;	Niobrara B, Original Hole	4	16,442.0	16,443.0	7/12/2024
8,646.0	89.5	6833.4 TVD; 994.83; 6833.4-	Niobrara B, Original Hole	4	16,488.0	16,489.0	7/12/2024
		6826.7 TVD; 7915.6-8910.4	Niobrara B, Original Hole	4	16,534.0	16,535.0	7/12/2024
8,910.4	89.5		Niobrara B, Original Hole	4	16,580.0	16,581.0	7/12/2024
8,918.0	89.5		Niobrara B, Original Hole	4	16,626.0	16,627.0	7/12/2024
9,181.1	89.5		Niobrara B, Original Hole	4	16,673.0	16,674.0	7/12/2024
9,449.1	90.6		Niobrara B, Original Hole	4	16,709.0	16,710.0	7/11/2024
9,715.9	91.2		Niobrara B, Original Hole	4	16,753.0	16,754.0	7/11/2024
9,983.9	91.0		Niobrara B, Original Hole	4	16,801.0	16,802.0	7/11/2024
10,251.0	91.4		Niobrara B, Original Hole	4	16,847.0	16,848.0	7/11/2024
10,519.0	91.3		Niobrara B, Original Hole	4	16,893.0	16,894.0	7/11/2024
10,787.1	91.4		Niobrara B, Original Hole	4	16,940.0	16,941.0	7/11/2024
11,054.1	91.1	Casing Joints, 5 1/2in; 13260.2;	Niobrara B, Original Hole	4	16,977.0	16,978.0	7/11/2024
11,321.8	91.2	6826.7 TVD; 4,348.14; 6826.7-	Niobrara B, Original Hole	4	17,023.0	17,024.0	7/11/2024
		6752.6 TVD; 8912.1-13260.2	Niobrara B, Original Hole	4	17,069.0	17,070.0	7/11/2024
11,588.9	91.2		Niobrara B, Original Hole	4	17,115.0	17,116.0	7/11/2024
11,857.0	91.1		Niobrara B, Original Hole	4	17,161.0	17,162.0	7/11/2024
12,125.0	91.4		Niobrara B, Original Hole	4	17,208.0	17,209.0	7/11/2024
12,392.1	91.1		Niobrara B, Original Hole	4	17,245.0	17,246.0	7/11/2024
12,662.1	91.1		Niobrara B, Original Hole	4	17,291.0	17,292.0	7/11/2024
12,929.1	91.3		Niobrara B, Original Hole	4	17,337.0	17,338.0	7/11/2024
13,194.9	91.6		Niobrara B, Original Hole	4	17,380.0	17,381.0	7/11/2024
13,260.2	91.7		Niobrara B, Original Hole	4	17,429.0	17,430.0	7/11/2024
13,462.9	91.6		Niobrara B, Original Hole	4	17,476.0	17,477.0	7/11/2024
13,730.0	91.6		Niobrara B, Original Hole	4	17,514.0	17,515.0	7/11/2024
13,998.0	90.1		Niobrara B, Original Hole	4	17,558.0	17,559.0	7/11/2024
14,265.1	90.0		Niobrara B, Original Hole	4	17,604.0	17,605.0	7/11/2024
14,533.1	90.1		Niobrara B, Original Hole	4	17,650.0	17,651.0	7/11/2024
14,800.9	89.9		Niobrara B, Original Hole	4	17,696.0	17,697.0	7/11/2024
15,067.9	90.2		Niobrara B, Original Hole	4	17,743.0	17,744.0	7/11/2024
15,336.0	90.1		Niobrara B, Original Hole	4	17,780.0	17,781.0	7/10/2024
15,601.1	90.0		Niobrara B, Original Hole	4	17,826.0	17,827.0	7/10/2024
15,868.1	90.1	Casing Joints, 5 1/2in; 18146.4;	Niobrara B, Original Hole	4	17,872.0	17,873.0	7/10/2024
16,139.1	90.1	6752 TVD; 4,866.80; 6752-6728.8	Niobrara B, Original Hole	4	17,918.0	17,919.0	7/10/2024
16,405.8	90.3	TVD; 13279.6-18146.4	Niobrara B, Original Hole	4	17,964.0	17,965.0	7/10/2024
16,673.9	90.2		Niobrara B, Original Hole	4	18,011.0	18,012.0	7/10/2024
16,940.9	89.9		Niobrara B, Original Hole	4	18,046.0	18,047.0	7/10/2024
17,209.0	90.0		Niobrara B, Original Hole	4	18,093.0	18,094.0	7/10/2024
17,477.0	90.0		Niobrara B, Original Hole	4	18,139.0	18,140.0	7/10/2024
17,744.1	90.1		Niobrara B, Original Hole	4	18,185.0	18,186.0	7/10/2024
18,012.1	90.3		Niobrara B, Original Hole	4	18,231.0	18,232.0	7/10/2024
18,146.3	90.1	Casing Joints, 5 1/2in; 18589;	Niobrara B, Original Hole	4	18,278.0	18,279.0	7/10/2024
18,278.9	90.1	6728.8 TVD; 421.70; 6728.8-					
18,544.9	90.2	6727.8 TVD; 18167.3-18589					
18,588.9	90.2	Wet Shoe Sub, 5 1/2in; 18600;					
18,594.2	90.2	6727.8 TVD; 5.86; 6727.8-6727.8					
18,610.9	90.2	TVD; 18594.2-18600					
18,623.4	90.2	Float Collar, 5 1/2in; 18612.7;					
		6727.8 TVD; 1.82; 6727.8-6727.7					
		TVD; 18610.9-18612.7					
		Float Shoe, 5 1/2in; 18625;					
		6727.7 TVD; 1.65; 6727.7-6727.7					
		TVD; 18623.3-18625					



Wellbore Schematic Input Report

Well Name: Drake 17N

Original Hole [Land]



Linked Zone	Sum of Entered Shot Total	Top (ftKB)	Btm (ftKB)	Date
Niobrara B, Original Hole	4	18,315.0	18,316.0	7/9/2024
Niobrara B, Original Hole	4	18,361.0	18,362.0	7/9/2024
Niobrara B, Original Hole	4	18,407.0	18,408.0	7/9/2024
Niobrara B, Original Hole	4	18,453.0	18,454.0	7/9/2024
Niobrara B, Original Hole	4	18,499.0	18,500.0	7/9/2024
Niobrara B, Original Hole	4	18,544.0	18,545.0	7/9/2024
Niobrara B, Original Hole	12	18,588.0	18,590.0	5/25/2024
Total	972			

Job Supply Amounts						
Supply Item Des	Job Supply Type	Uni...	Job Category	Total...	Total...	Total...

Daily Cost Breakdown by Category		
Field Est (Cost)	Description	Note