

Storm Water Management and Erosion control
Location Name: TEP Rocky Mountain LLC FEDERAL PA 44-13 Pad
Location # 457469



**Location Overview: Location is within close proximity to High
Priority/Density/NSO Habitat areas.
Section/Township/Range: 13 6S95W**

Storm water Management and Erosion control
Location Name: TEP Rocky Mountain LLC FEDERAL PA 44-13 Pad
Location # 457469



North West corner of location.



North East corner of location.



South West corner of location.



South East corner of location.

Storm water Management and Erosion control
Location Name: TEP Rocky Mountain LLC FEDERAL PA 44-13 Pad
Location # 457469



Photo # 731 Erosion on cut slope & transport of sediment onto location/insufficient BMP's



Photo # 732 Erosion on cut slope & transport of sediment onto location/insufficient BMP's

Storm water Management and Erosion control
Location Name: TEP Rocky Mountain LLC FEDERAL PA 44-13 Pad
Location # 457469



Photo # 733 Erosion on cut slope & transport of sediment onto location/insufficient BMP's

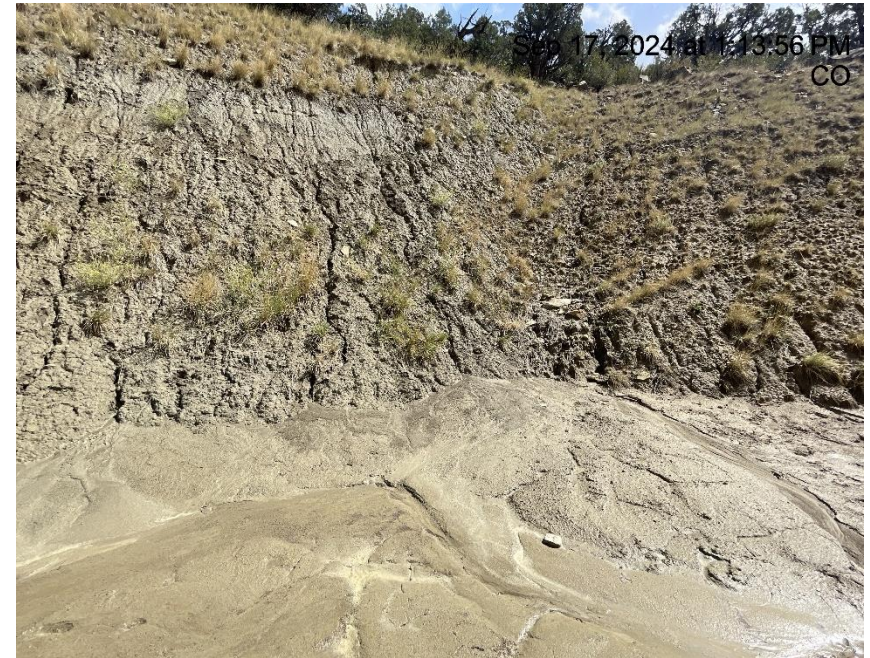


Photo # 734 Erosion on cut slope & transport of sediment onto location/insufficient BMP's

Storm water Management and Erosion control
Location Name: TEP Rocky Mountain LLC FEDERAL PA 44-13 Pad
Location # 457469



Photo # 735 Erosion on cut slope & transport of sediment onto & off of location/insufficient BMP's



Photo # 736 Erosion on cut slope & transport of sediment onto & off of location/insufficient BMP's

Storm water Management and Erosion control
Location Name: TEP Rocky Mountain LLC FEDERAL PA 44-13 Pad
Location # 457469



Photo # 737 Erosion & transport of sediment onto & off of location/insufficient BMP's



Photo # 738 Erosion & transport of sediment onto & off of location/insufficient BMP's

Storm water Management and Erosion control
Location Name: TEP Rocky Mountain LLC FEDERAL PA 44-13 Pad
Location # 457469



Photo # 739 Erosion & transport of sediment onto & off of location/insufficient BMP's