



CEMENT BOND
GAMMA RAY
CCL

Company	MAGPIE OPERATING INC	Country	USA
Well	TRINDLE 2		
Field	LOVELAND		
County	LARIMER		
State	COLORADO		
Location:	API # :	Other Services	
Permanent Datum	SEC 30 TWP 5N RGE 68W	Elevation	
Log Measured From	GROUND LEVEL	K.B. D.F. G.L.	
Drilling Measured From			
Date	9-13-24		
Run Number	1		
Depth Driller	NA		
Depth Logger	210'		
Bottom Logged Interval			
Top Log Interval	SURFACE		
Open Hole Size			
Type Fluid	WATER		
Density / Viscosity	8.3#		
Max. Recorded Temp.	NA		
Estimated Cement Top			
Time Well Ready	7		
Time Logger on Bottom			
Equipment Number	WL001		
Location	MILLIKEN		
Recorded By	J. JOHNSON		
Witnessed By	JUAN LLENARES		
Run Number	Bit	From	To
Casing Record	Size	Wgt/Ft	Top
Surface String	8 5/8"	24#	0'
Prot. String			
Production String	5 1/2'	14#	0'
Liner			

<<< Fold Here >>>

All interpretations are opinions based on inferences from electrical or other measurements and we cannot and do not guarantee the accuracy or correctness of any interpretation, and we shall not, except in the case of gross or willful negligence on our part, be liable or responsible for any loss, costs, damages, or expenses incurred or sustained by anyone resulting from any interpretation made by any of our officers, agents or employees. These interpretations are also subject to our general terms and conditions set out in our current Price Schedule.

Comments

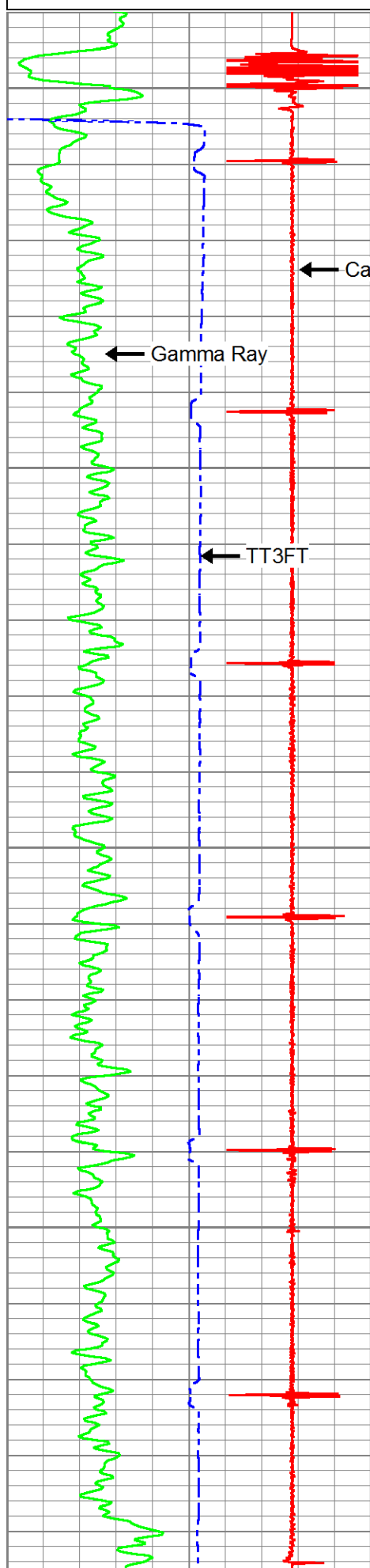
-20000	Collar Locator	20000
0	Gamma Ray (GAPI)	150
350	TT3FT (usec)	120

0	AMP AMPLITUDE (mV)	20
0	AMPLITUDE (mV)	100

200

VDL (usec)

1200



0

← Casing Collar Locator

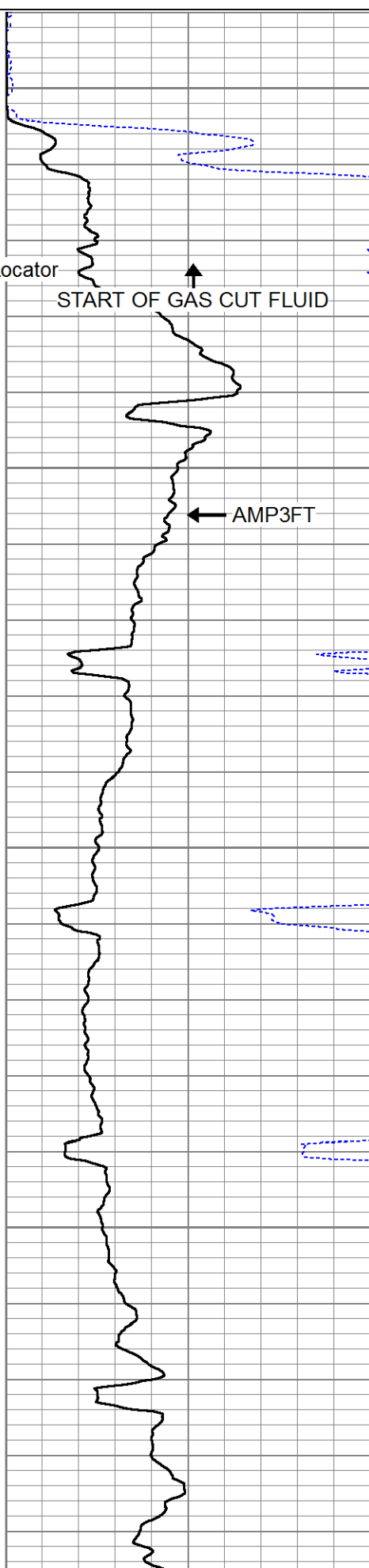
← Gamma Ray

← TT3FT

50

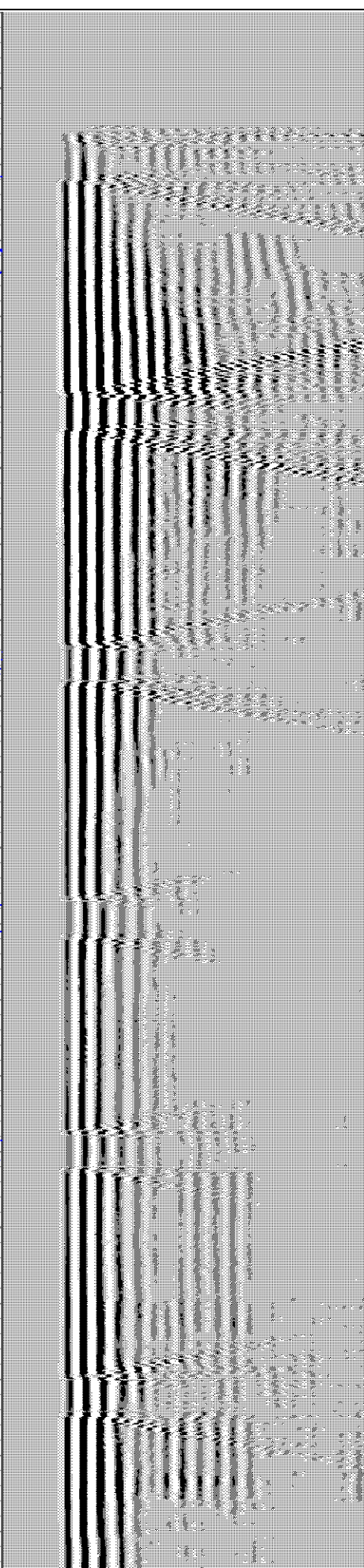
100

150



↑ START OF GAS CUT FLUID

← AMP3FT



-20000	Collar Locator	20000	0	AMP AMPLITUDE (mV)	20	200	VDL (usec)	1200
0	Gamma Ray (GAPI)	150	0	AMPLITUDE (mV)	100			
350	TT3FT (usec)	120						