

July 3, 2024

# EWS 13

## Groundwater Monitoring Report

### Q2 2024

Prepared for:



Expedition Water Solutions  
2015 Clubhouse Drive, Suite 201  
Greeley, CO 80634  
970.381.5005



**CGRS**  
SOLUTIONS DELIVERED

1301 Academy Ct.  
Fort Collins, CO 80524

[www.cgrs.com](http://www.cgrs.com)  
800.288.2657

## Contents

<b>1.0 Introduction.....</b>	<b>3</b>
1.1 Facility Overview .....	3
1.2 Scope of Work .....	3
<b>2.0 Groundwater Monitoring .....</b>	<b>3</b>
2.1 Activities .....	3
2.2 Results .....	4
<b>3.0 Conclusion.....</b>	<b>4</b>

### Attachments:

- Figures
  - Site Location Map
  - Groundwater Elevation Map
  - Groundwater Sample Location Map
- Table 1 – Groundwater Elevation and Analytical Data
- Attachment A – Laboratory Report and Chain of Custody

## 1.0 Introduction

This report documents monitoring activities performed by CGRS, Inc. (CGRS) at the Expedition Water Solutions (EWS) EWS 13 Class II disposal facility. The facility is located at 23360 County Road 54, Greeley, Weld County, Colorado, as depicted in the Site Location Map.

### 1.1 Facility Overview

The facility was constructed in 2009 and provides services for the oil and gas industry. Operations typically include the collection, storage, treatment, and injection of produced water into an injection well for disposal. The facility design consists of an office, pump house, concrete unloading pad, concrete vault, one Class II injection well, and a concrete secondary containment that houses 9 aboveground storage tanks (ASTs) for the treatment of produced water and storage of recovered oil.

The facility has not been operational since May 12, 2022, and is currently undergoing construction to modify the vapor collection system. In early July, the partially buried receiving basin (vault) was drained, cleaned, and thoroughly inspected in preparation for upcoming equipment modifications. EWS personnel determined that the basin was free of cracks and seams. On July 26, 2023, EWS installed a 60 mil, polyurea, spray-in coating to the interior walls and floor of the receiving basin. The polyurea coating is designed for use in liquid applications and will create a barrier to further protect the environment from potential release. On September 20, 2023, CGRS confirmed that the polyurea coating was in place. It is expected that operations will resume at the facility by the end of March 2024.

### 1.2 Scope of Work

Quarterly groundwater monitoring was performed on February 16, 2024. Monitoring activities consisted of collecting groundwater level measurements, measuring in-situ water quality parameters, and collecting water quality samples for laboratory analysis.

## 2.0 Groundwater Monitoring

### 2.1 Activities

On May 16, 2024, CGRS conducted groundwater monitoring at the EWS 13 facility. Depth to water was measured in monitoring wells MW-1, MW-2, MW-3, MW-4, MW-5, MW-6, and MW-7. Depth-to-water measurements were used to calculate groundwater elevation and well-specific purge volumes. Water quality samples were obtained from monitoring wells MW-1, MW-2, MW-3, MW-4, MW-5, MW-6, and MW-7, and in-situ field parameters consisting of temperature, specific conductance, dissolved oxygen, pH, and oxidation-reduction potential (ORP) were measured and documented after sampling each monitoring well.

Samples collected on May 16, 2024, were submitted to eAnalytics in Loveland, Colorado under chain-of-custody protocol for analysis of benzene, toluene, ethylbenzene, and total xylenes (BTEX), total dissolved solids (TDS), chloride, and sulfate. Laboratory analytical results and chain-of-custody documentation are included in Attachment A, summarized with historical data in Table 1, and depicted in the Groundwater Sample Location Map.

## 2.2 Results

Depth to groundwater varied between 7.74 feet below top of casing (TOC) in monitoring well MW-7 to 11.68 feet below TOC in monitoring well MW-5. To determine relative groundwater elevation, depth to groundwater was subtracted from surveyed reference elevations, as shown in Table 1. The inferred groundwater flow direction is to the north-northeast at a calculated hydraulic gradient of 0.00106 ft/ft, as measured between monitoring wells MW-7 and MW-2. Inferred water table elevation contours are illustrated in the Groundwater Elevation Map.

A review of groundwater analytical data indicates that all BTEX analytes from the groundwater quality samples submitted for analysis were reported to be below the laboratory reporting limit and Colorado Energy and Carbon Management Commission (CECMC) maximum contaminant level (MCL). Inorganic analyte concentrations reported for each monitoring well represent normal background water quality conditions historically observed at this facility.

## 3.0 Conclusion

CGRS will continue the quarterly monitoring program, which will consist of obtaining groundwater level measurements and in-situ field parameters and collecting water quality samples from groundwater monitoring wells. The next quarterly monitoring event is scheduled for August 2024. If you have any questions regarding this report or the project itself, please contact Ms. Drezden Kinnaird at [dkinnaird@cgrs.com](mailto:dkinnaird@cgrs.com).

Prepared by:



Lauren Glazier  
Staff Scientist  
Energy Services Division

Reviewed by:



Drezden Kinnaird, REM  
Project Manager/ Environmental Scientist  
Energy Services Division Supervisor

Recipients:

Miguel Garcia, Weld County Department of Public Health & Environment – [msolisgarcia@weld.gov](mailto:msolisgarcia@weld.gov)  
Dave Gage, Expedition Water Solutions – [dgage@expedition-water.com](mailto:dgage@expedition-water.com)  
Jim Goddard, Expedition Water Solutions – [jgoddard@expedition-water.com](mailto:jgoddard@expedition-water.com)

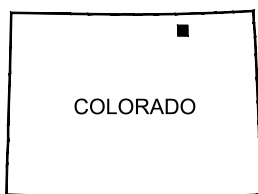
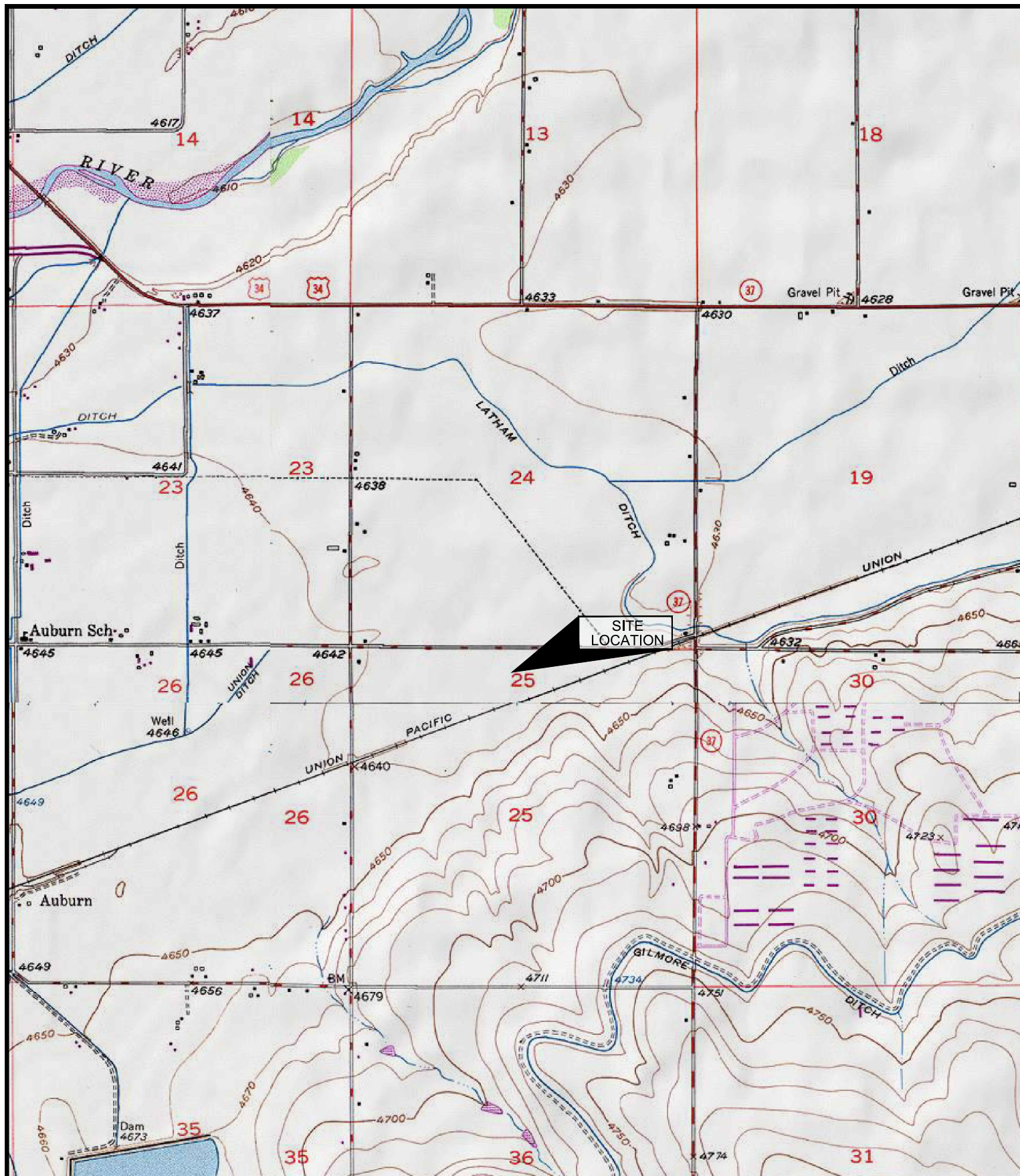


## Figures

---

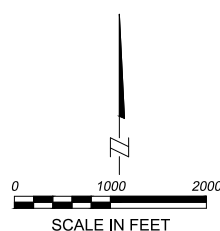
Site Location Map  
Groundwater Elevation Map  
Groundwater Sample Location Map





COLORADO

■ QUADRANGLE LOCATION



SCALE IN FEET

### SITE LOCATION MAP

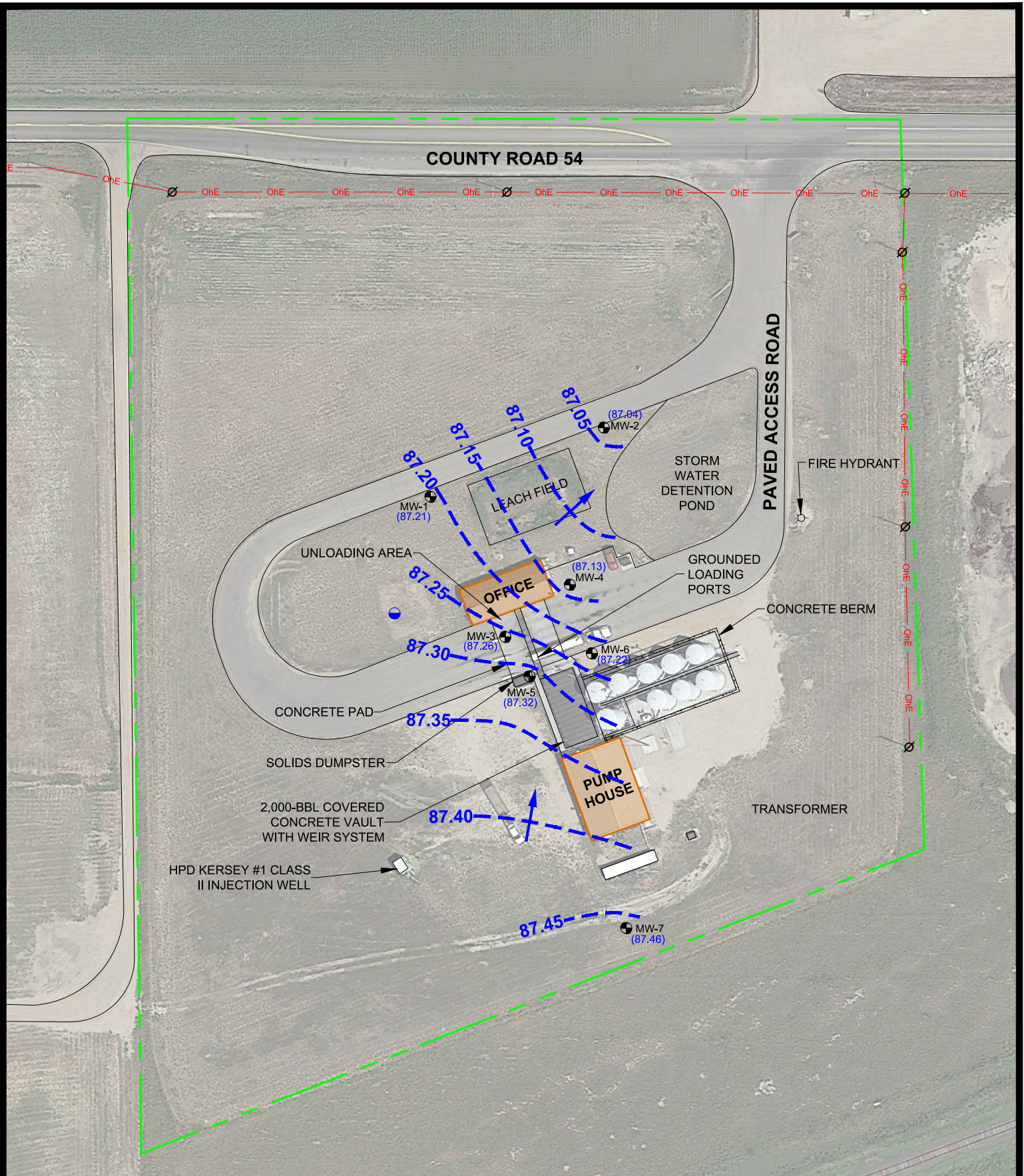
EXPEDITION WATER SOLUTIONS  
EWS #13  
23360 COUNTY ROAD 54  
GREELEY, COLORADO 80631

PROJECT:  
1-12456-18304aa  
DATE:  
01/28/2020

DRAFT:  
CLB  
REVIEW:  
JAA



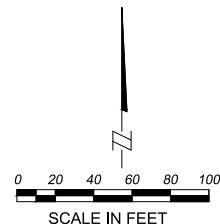




#### LEGEND

- MW-1 MONITORING WELL
- DOMESTIC WATER WELL
- (87.21) GROUNDWATER ELEVATION (FEET)
- OHE OVERHEAD ELECTRIC
- APPROXIMATE PROPERTY BOUNDARY
- GROUNDWATER ELEVATION CONTOUR

- INFERRED FLOW DIRECTION
- UTILITY POLE



#### GROUNDWATER ELEVATION MAP

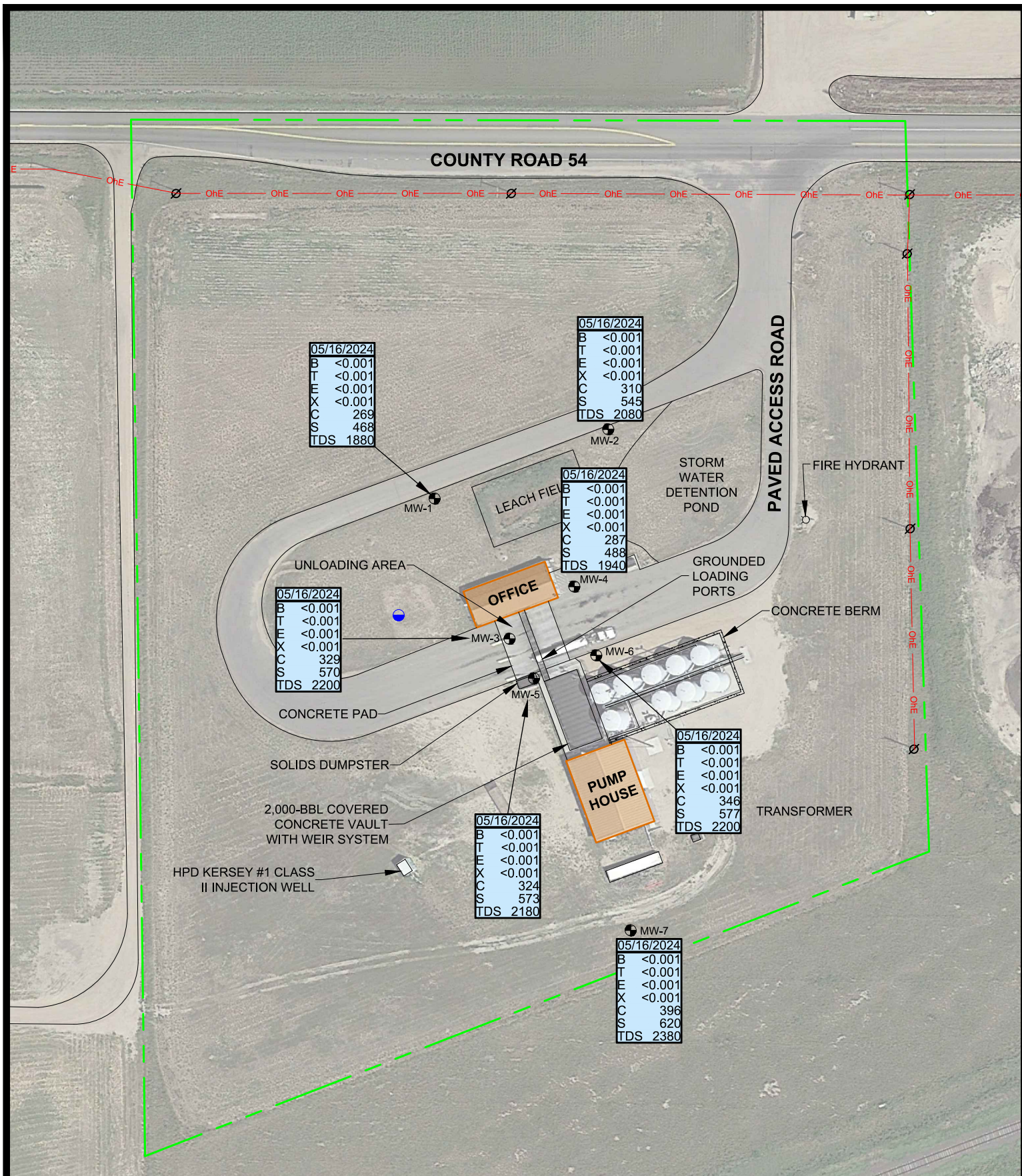
May 16, 2024  
EXPEDITION WATER SOLUTIONS  
EWS #13  
23360 COUNTY ROAD 54  
GREELEY, COLORADO 80631

PROJECT:  
20673  
DATE:  
05/30/2024

DRAFT:  
CLB  
REVIEW:







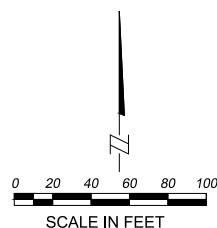
#### LEGEND

- MW-1 MONITORING WELL
- DOMESTIC WATER WELL
- UTILITY POLE
- OVERHEAD ELECTRIC
- APPROXIMATE PROPERTY BOUNDARY

#### SAMPLE DATE

B	BENZENE (mg/L)
T	TOLUENE (mg/L)
E	ETHYLBENZENE (mg/L)
X	TOTAL XYLENES (mg/L)
C	CHLORIDE (mg/L)
S	SULFATES (mg/L)
TDS	TOTAL DISSOLVED SOLIDS (mg/L)

NOTE: **BOLD** VALUES INDICATE CONCENTRATION EXCEEDS THE APPLICABLE REGULATORY GUIDELINES



#### GROUNDWATER SAMPLE LOCATION MAP

May 16, 2024  
EXPEDITION WATER SOLUTIONS  
EWS #13  
23360 COUNTY ROAD 54  
GREELEY, COLORADO 80631

PROJECT:  
20673  
DATE:  
05/30/2024

DRAFT:  
CLB  
REVIEW:







**Table 1**

---

Groundwater Elevation and Analytical Data

**Groundwater Elevation and Analytical Data**  
**Groundwater Monitoring Report**  
Expedition Water Solutions - EWS #13  
23360 County Road 54, Greeley, CO 80631

Sample ID	Sample Date	Reference Elevation (ft)	Depth To Water (ft)	Groundwater Elevation (ft)	Benzene (mg/L)	Toluene (mg/L)	Ethyl-Benzene (mg/L)	Xylenes (mg/L)	Chloride (mg/L)	Sulfate (mg/L)	TDS (mg/L)	Temperature (°C)	Specific Conductance (µS/cm)	Dissolved Oxygen (mg/L)	pH	ORP (mV)
CECMC MCL	-	-	-	-	0.005	1	0.7	10	1.25 x BG	1.25 x BG	1.25 x BG	-	-	-	-	-
MW-1	1/26/2016	96.10	5.66	90.44	<0.001	<0.001	<0.001	<0.001	298	733	2,280	10.13	2,690		7.18	
MW-1	7/26/2016	96.10	4.24	91.86	<0.001	<0.001	<0.001	<0.001	308	845	2,530	17.01	3,322		7.15	
MW-1	1/30/2017	96.10	6.75	89.35	<0.001	<0.001	<0.001	<0.001	340	1,050	1,830	11.74	3,039		7.06	
MW-1	7/24/2017	96.10	4.24	91.86	<0.001	<0.001	<0.001	<0.002	225	617	1,740	16.88	3,289		7.10	
MW-1	1/29/2018	96.10	6.30	89.80	<0.001	<0.001	<0.001	<0.002	382	993	2,320	9.62	3,033		8.50	
MW-1	7/24/2018	96.10	4.95	91.15	<0.001	<0.001	<0.001	<0.002	373	900	1,660	17.95	2,636		7.81	
MW-1	1/30/2019	96.10	6.73	89.37	<0.001	<0.001	<0.001	<0.002	1,280	3,410	1,480	9.40	3,023		7.45	
MW-1	7/29/2019	96.10	5.01	91.09	<0.001	<0.001	<0.001	<0.002	274	670	1,440	16.00	2,938		5.27	
MW-1	1/8/2020	96.10	5.97	90.13	<0.001	<0.001	<0.001	<0.001	321	802	2,250	10.46	3,194	0.38	7.09	151.1
MW-1	4/28/2020	96.10	9.24	86.86	<0.001	<0.001	<0.001	<0.001	342	821	2,140	9.24	3,388	0.31	7.05	128.5
MW-1	7/15/2020	96.10	7.43	88.67	<0.001	<0.001	<0.001	<0.001	369	923	2,310	16.51	2,637	3.85	7.33	145.9
MW-1	10/13/2020	96.10	4.38	91.72	<0.001	<0.001	<0.001	<0.001	223	548	1,580	15.30	2,599	4.15	7.17	114.2
MW-1	1/13/2021	96.10	6.97	89.13	<0.001	<0.001	<0.001	<0.001	296	715	1,980	10.75	2,753	2.47	7.26	121.6
MW-1	4/15/2021	96.10	9.36	86.74	<0.001	<0.001	<0.001	<0.001	309	753	1,980	7.76	2,671	2.65	7.01	197.3
MW-1	7/8/2021	96.10	7.33	88.77	<0.001	<0.001	<0.001	<0.001	338	927	2,210	15.44	2,967	4.86	7.25	115.2
MW-1	11/30/2021	96.10	5.00	91.10	<0.00100	<0.00100	<0.00100	<0.00100	295	685	1,910	12.68	2,821.6	5.20	7.21	94.7
MW-1	1/27/2022	96.10	6.84	89.26	<0.00100	<0.00100	<0.00100	<0.00100	460	728	1,920	11.05	2,359.5	6.07	8.26	-60.4
MW-1	4/21/2022	96.10	8.88	87.22	<0.00100	<0.00100	<0.00100	<0.00100	312	778	1,950	10.16	2,664.3	5.94	8.29	-9.9
MW-1	9/20/2022	96.10	4.3	91.80	<0.001	<0.001	<0.001	<0.001	120	353	1,100	18.95	1,619.5	5.95	7.53	218.3
MW-1	11/18/2022	96.10	5.05	91.05	<0.001	<0.001	<0.001	<0.001	208	716	1,840	12.26	2,295.6	3.90	7.58	90.4
MW-1	1/26/2023	96.10	7.05	89.05	<0.001	<0.001	<0.001	<0.001	392	530	1,940	10.88	2,892.0	5.33	7.21	166.4
MW-1	6/9/2023	96.10	8.00	88.10	<0.001	<0.001	<0.001	<0.001	285	674	2,040	13.70	2,989.5	4.24	7.25	66.3
MW-1	9/20/2023	96.10	3.21	92.89	<0.001	<0.001	<0.001	<0.001	318	710	2,120	20.13	2,943.5	3.52	7.41	-91.0
MW-1	12/15/2023	96.10	5.40	90.70	<0.001	<0.001	<0.001	<0.001	262	587	1,860	11.50	2,653.0	1.72	7.37	38.9
MW-1	2/16/2024	96.10	7.35	88.75	<0.001	<0.001	<0.001	<0.001	245	491	1,840	7.31	2,570.9	3.25	7.26	114.0
MW-1	5/16/2024	96.10	8.89	87.21	<0.001	<0.001	<0.001	<0.001	269	468	1,880	10.87	2,502.8	5.29	7.31	230.6
MW-2	1/26/2016	96.40	6.18	90.22	<0.001	<0.001	<0.001	<0.001	330	801	2,250	10.21	2,780		7.03	
MW-2	7/26/2016	96.40	4.60	91.80	<0.001	<0.001	<0.001	<0.001	292	743	2,330	14.80	3,020		7.14	
MW-2	1/30/2017	96.40	7.31	89.09	<0.001	<0.001	<0.001	<0.001	379	1,200	1,890	11.44	3,152		7.01	
MW-2	7/24/2017	96.40	4.49	91.91	<0.001	<0.001	<0.001	<0.002	228	593	1,780	18.37	1,618		7.13	
MW-2	1/29/2018	96.40	6.86	89.54	<0.001	<0.001	<0.001	<0.002	402	1,090	2,560	10.86	3,322		8.77	
MW-2	7/24/2018	96.40	5.24	91.16	<0.001	<0.001	<0.001	<0.002	406	967	1,720	17.18	2,692		7.74	
MW-2	1/30/2019	96.40	4.27	92.13	<0.001	<0.001	<0.001	<0.002	1,220	3,230	1,500	10.57	3,114		7.43	
MW-2	7/29/2019	96.40	5.40	91.00	<0.001	<0.001	<0.001	<0.002	299	692	1,450	15.32	3,028		5.45	
MW-2	1/8/2020	96.40	6.51	89.89	<0.001	<0.001	<0.001	<0.001	322	851	2,410	11.06	3,302	1.95	7.06	132.0
MW-2	4/28/2020	96.40	9.15	87.25	<0.001	<0.001	<0.001	<0.001	355	831	2,120	9.84	3,475	3.06	6.90	137.5
MW-2	7/15/2020	96.40	7.83	88.57	<0.001	<0.001	<0.001	<0.001	380	953	2,320	16.73	2,766	5.64	7.44	151.0
MW-2	10/13/2020	96.40	4.83	91.57	<0.001	<0.001	<0.001	<0.001	156	411	1,220	15.71	1,922	4.76	7.21	114.5
MW-2	1/13/2021	96.40	7.52	88.88	<0.001	<0.001	<0.001	<0.001	306	749	2,080	11.40	2,986	5.28	7.19	115.8
MW-2	4/15/2021	96.40	9.89	86.51	<0.001	<0.001	<0.001	<0.001	314	767	2,070	8.43	3,125	3.27	7.01	197.4
MW-2	7/8/2021	96.40	INA													
MW-2	11/30/2021	96.40	5.53	90.87	<0.00100	<0.00100	<0.00100	<0.00100	279	685	1,930	13.37	2,539.7	5.98	7.16	94.4
MW-2	1/27/2022	96.40	7.38	89.02	<0.00100	<0.00100	<0.00100	<0.00100	307	779	2,010	11.47	3,086.7	6.92	8.40	-61.9
MW-2	4/21/2022	96.40	9.40	87.00	<0.00100	<0.00100	<0.00100	<0.00100	326	845	2,090	10.64	1,788.8	9.03	8.19	-1.1
MW-2	9/20/2022	96.40	4.6	91.80	<0.001	<0.001	<0.001	<0.001	117	373	1,200	24.42	1,447.2	5.53	7.75	207.0
MW-2	11/18/2022	96.40	5.60	90.80	<0.001	<0.001	<0.001	<0.001	179	663	1,620	12.99	2,033.3	6.55	7.72	70.3
MW-2	1/26/2023	96.40	7.57	88.83	<0.001	<0.001	<0.001	<0.001	394	550	1,760	11.95	2,565.1	6.25	7.16	163.4
MW-2	6/9/2023	96.40	8.50	87.90	<0.001	<0.001	<0.001	<0.001	290	692	2,140	15.76	3,250.5	5.39	7.25	66.3
MW-2	9/20/2023	96.40	3.62	92.78	<0.001	<0.001	<0.001	<0.001	322	717	2,180	19.14	3,002.2	3.92	7.40	-80.2

**Groundwater Elevation and Analytical Data**  
**Groundwater Monitoring Report**  
Expedition Water Solutions - EWS #13  
23360 County Road 54, Greeley, CO 80631

Sample ID	Sample Date	Reference Elevation (ft)	Depth To Water (ft)	Groundwater Elevation (ft)	Benzene (mg/L)	Toluene (mg/L)	Ethyl-Benzene (mg/L)	Xylenes (mg/L)	Chloride (mg/L)	Sulfate (mg/L)	TDS (mg/L)	Temperature (°C)	Specific Conductance (µS/cm)	Dissolved Oxygen (mg/L)	pH	ORP (mV)
CECMC MCL	-	-	-	-	0.005	1	0.7	10	1.25 x BG	1.25 x BG	1.25 x BG	-	-	-	-	-
MW-2	12/15/2023	96.40	5.90	90.50	<0.001	<0.001	<0.001	<0.001	294	704	2,140	11.50	3,008.3	1.95	7.35	39.2
MW-2	2/16/2024	96.40	7.90	88.50	<0.001	<0.001	<0.001	<0.001	268	559	1,900	8.39	2,353.7	5.38	7.31	112.4
MW-2	5/16/2024	96.40	9.36	87.04	<0.001	<0.001	<0.001	<0.001	310	545	2,080	11.33	2,676.1	5.38	7.27	233.2
MW-3	1/26/2016	99.00	8.41	90.59	<0.001	<0.001	<0.001	<0.001	335	734	2,310	10.90	2,775		7.28	
MW-3	7/26/2016	99.00	7.14	91.86	<0.001	<0.001	<0.001	<0.001	298	758	2,410	14.39	3,157		7.10	
MW-3	1/30/2017	99.00	9.54	89.46	<0.001	<0.001	<0.001	<0.001	286	1,090	1,800	11.32	2,963		7.06	
MW-3	7/24/2017	99.00	7.20	91.80	<0.001	<0.001	<0.001	<0.002	235	592	1,800	14.20	3,147		7.07	
MW-3	1/29/2018	99.00	9.10	89.90	<0.001	<0.001	<0.001	<0.002	435	1,210	2,270	10.30	3,060		8.76	
MW-3	7/24/2018	99.00	7.78	91.22	<0.001	<0.001	<0.001	<0.002	382	902	1,690	15.15	2,479		7.67	
MW-3	1/30/2019	99.00	9.51	89.49	<0.001	<0.001	<0.001	<0.002	1,230	3,180	1,570	10.28	3,173		7.29	
MW-3	7/29/2019	99.00	7.99	91.01	<0.001	<0.001	<0.001	<0.002	248	620	1,140	13.62	2,938		7.32	
MW-3	1/8/2020	99.00	8.75	90.25	<0.001	<0.001	<0.001	<0.001	340	853	2,320	10.31	3,296	0.50	7.11	168.8
MW-3	4/28/2020	99.00	11.40	87.60	<0.001	<0.001	<0.001	<0.001	357	803	2,120	9.48	3,451	0.21	7.05	117.0
MW-3	7/15/2020	99.00	9.50	89.50	<0.001	<0.001	<0.001	<0.001	375	938	2,300	14.99	2,532	2.50	7.37	150.8
MW-3	10/13/2020	99.00	7.25	91.75	<0.001	<0.001	<0.001	<0.001	248	613	1,770	16.79	3,034	2.95	7.31	120.1
MW-3	1/13/2021	99.00	9.77	89.23	<0.001	<0.001	<0.001	<0.001	302	741	2,070	11.55	2,885	2.70	6.95	91.2
MW-3	4/15/2021	99.00	12.13	86.87	<0.001	<0.001	<0.001	<0.001	318	762	2,000	8.84	3,113	2.09	7.07	178.0
MW-3	7/8/2021	99.00	10.30	88.70	<0.001	<0.001	<0.001	<0.001	325	821	2,070	14.52	2,878	4.18	7.29	112.1
MW-3	11/30/2021	99.00	7.90	91.10	<0.00100	0.00101	<0.00100	<0.00100	293	702	1,980	14.15	2,716.3	4.26	6.99	42.2
MW-3	1/27/2022	99.00	9.62	89.38	<0.00100	0.00101	<0.00100	<0.00100	291	714	1,920	12.55	1,863.5	7.30	8.21	-74.8
MW-3	4/21/2022	99.00	11.66	87.34	<0.00100	0.00101	<0.00100	<0.00100	312	762	2,050	10.81	3,095.4	6.12	8.41	-91.4
MW-3	9/20/2022	99.00	7.2	91.80	<0.001	<0.001	<0.001	<0.001	157	446	1,440	19.55	1,997.9	4.92	7.58	224.5
MW-3	11/18/2022	99.00	7.88	91.12	<0.001	<0.001	<0.001	<0.001	201	711	1,780	14.03	2,665.2	5.43	7.58	94.1
MW-3	1/26/2023	99.00	9.80	89.20	<0.001	<0.001	<0.001	<0.001	388	541	1,740	11.24	2,578.3	6.20	7.15	173.8
MW-3	6/9/2023	99.00	10.80	88.20	<0.001	<0.001	<0.001	<0.001	289	646	2,020	15.34	2,881.1	4.69	7.41	77.8
MW-3	9/20/2023	99.00	6.21	92.79	<0.001	<0.001	<0.001	<0.001	310	753	2,280	19.22	2,912.7	4.38	7.39	-53.5
MW-3	12/15/2023	99.00	8.15	90.85	<0.001	<0.001	<0.001	<0.001	283	619	1,900	12.60	2,835.8	1.84	7.33	35.2
MW-3	2/16/2024	99.00	10.20	88.80	<0.001	<0.001	<0.001	<0.001	257	513	1,780	8.62	240.49	3.08	7.27	106.8
MW-3	5/16/2024	99.00	11.74	87.26	<0.001	<0.001	<0.001	<0.001	329	570	2,200	12.81	2,622.50	6.83	7.11	230.8
MW-4	1/26/2016	98.70	8.33	90.37	<0.001	<0.001	<0.001	<0.001	322	751	2,250	11.70	2,718		7.29	
MW-4	7/26/2016	98.70	6.97	91.73	<0.001	<0.001	<0.001	<0.001	302	722	2,190	13.80	2,901		7.31	
MW-4	1/30/2017	98.70	9.44	89.26	<0.001	<0.001	<0.001	<0.001	352	1,100	1,770	12.07	2,872		7.12	
MW-4	7/24/2017	98.70	6.98	91.72	<0.001	<0.001	<0.001	<0.002	248	620	1,770	13.50	2,909		7.27	
MW-4	1/29/2018	98.70	8.98	89.72	<0.001	<0.001	<0.001	<0.002	428	1,180	2,400	11.20	3,138		8.40	
MW-4	7/24/2018	98.70	8.10	90.60	0.0017	0.0015	<0.001	<0.002	439	1,020	1,730	15.42	2,484		7.62	
MW-4	1/30/2019	98.70	9.41	89.29	<0.001	<0.001	<0.001	<0.002	1,300	3,340	1,580	10.78	3,220		7.31	
MW-4	7/29/2019	98.70	7.82	90.88	<0.001	<0.001	<0.001	<0.002	276	670	1,450	12.64	3,013		6.98	
MW-4	1/8/2020	98.70	8.65	90.05	<0.001	<0.001	<0.001	<0.001	330	818	2,280	11.94	3,182	0.16	7.04	174.8
MW-4	4/28/2020	98.70	11.29	87.41	<0.001	<0.001	<0.001	<0.001	308	232	2,180	9.61	3,522	0.09	6.97	114.8
MW-4	7/15/2020	98.70	9.28	89.42	<0.001	<0.001	<0.001	<0.001	373	949	2,310	15.09	2,515	2.36	7.26	152.1
MW-4	10/13/2020	98.70	7.11	91.59	<0.001	<0.001	<0.001	<0.001	237	590	1,630	16.46	2,821	2.52	7.24	115.9
MW-4	1/13/2021	98.70	9.68	89.02	<0.001	<0.001	<0.001	<0.001	318	770	2,110	11.64	3,053	3.86	7.07	103.2
MW-4	4/15/2021	98.70	12.03	86.67	<0.001	<0.001	<0.001	<0.001	322	766	2,010	8.74	2,833	2.37	7.05	183.1
MW-4	7/8/2021	98.70	10.16	88.54	<0.001	<0.001	<0.001	<0.001	316	786	2,000	14.03	2,682	3.55	7.29	110.5
MW-4	11/30/2021	98.70	7.75	90.95	<0.00100	<0.00100	<0.00100	<0.00100	295	710	1,980	14.52	2,882.9	4.60	7.08	62.5
MW-4	1/27/2022	98.70	9.52	89.18	<0.00100	<0.00100	<0.00100	<0.00100	299	739	1,960	11.77	2,946.5	4.03	8.16	-66.1
MW-4	4/21/2022	98.70	11.55	87.15	<0.00100	<0.00100	<0.00100	<0.00100	316	778	1,940	10.90	2,563.0	6.00	8.40	-65.6
MW-4	9/20/2022	98.70	7.0	91.70	<0.001	<0.001	<0.001	<0.001	156	459	1,550	21.19	1,947.2	4.57	7.52	203.5



**Groundwater Elevation and Analytical Data**  
**Groundwater Monitoring Report**  
Expedition Water Solutions - EWS #13  
23360 County Road 54, Greeley, CO 80631

Sample ID	Sample Date	Reference Elevation (ft)	Depth To Water (ft)	Groundwater Elevation (ft)	Benzene (mg/L)	Toluene (mg/L)	Ethyl-Benzene (mg/L)	Xylenes (mg/L)	Chloride (mg/L)	Sulfate (mg/L)	TDS (mg/L)	Temperature (°C)	Specific Conductance (µS/cm)	Dissolved Oxygen (mg/L)	pH	ORP (mV)
CECMC MCL	-	-	-	-	0.005	1	0.7	10	1.25 x BG	1.25 x BG	1.25 x BG	-	-	-	-	-
MW-4	11/18/2022	98.70	7.75	90.95	<0.001	<0.001	<0.001	<0.001	202	702	1,740	14.26	2,648.0	4.05	7.56	96.7
MW-4	1/26/2023	98.70			Unable to sample due to ice covering the well											
MW-4	6/9/2023	98.70	10.70	88.00	<0.001	<0.001	<0.001	<0.001	272	619	2,000	14.30	2,564.3	4.15	7.22	102.0
MW-4	9/20/2023	98.70	6.06	92.64	<0.001	<0.001	<0.001	<0.001	278	702	2,020	17.82	2,688.2	4.13	7.38	-48.0
MW-4	12/15/2023	98.70	8.06	90.64	<0.001	<0.001	<0.001	<0.001	302	718	2,140	12.70	3,070.2	1.99	7.32	35.3
MW-4	2/16/2024	98.70	10.50	88.20	<0.001	<0.001	<0.001	<0.001	274	572	1,980	7.62	275.19	3.65	7.10	113.8
MW-4	5/16/2024	98.70	11.57	87.13	<0.001	<0.001	<0.001	<0.001	287	488	1,940	13.94	2,417.50	4.05	6.61	220.1
MW-5	1/26/2016	99.00	8.41	90.59	<0.001	<0.001	<0.001	<0.001	313	722	2,110	9.31	2,658		7.20	
MW-5	4/26/2016	99.00	10.07	88.93	<0.001	<0.001	<0.001	<0.001	371	725	2,290	8.33	2,991		6.68	
MW-5	7/26/2016	99.00	7.16	91.84	<0.001	<0.001	<0.001	<0.001	270	650	2,250	15.29	2,939		7.21	
MW-5	10/31/2016	99.00	6.87	92.13	<0.001	<0.001	<0.001	<0.001	382	1,050	1,800	16.20	3,364		7.39	
MW-5	1/30/2017	99.00	9.50	89.50	<0.001	<0.001	<0.001	<0.001	362	1,070	1,760	11.29	2,960		7.09	
MW-5	4/27/2017	99.00	11.21	87.79	<0.001	<0.001	<0.001	<0.002	423	933	2,410	8.95	3,146		7.26	
MW-5	7/24/2017	99.00	7.22	91.78	<0.001	<0.001	<0.001	<0.002	207	498	1,780	14.65	2,950		7.17	
MW-5	10/27/2017	99.00	5.48	93.52	<0.001	<0.001	<0.001	<0.002	283	830	2,510	14.81	3,317		7.68	
MW-5	1/29/2018	99.00	9.09	89.91	<0.001	<0.001	<0.001	<0.002	454	1,270	2,460	9.78	3,243		8.30	
MW-5	4/12/2018	99.00	11.00	88.00	<0.001	<0.001	<0.001	<0.002	362	1,100	2,570	8.41	3,337		7.34	
MW-5	7/24/2018	99.00	8.00	91.00	0.0012	<0.001	<0.001	<0.002	505	1,160	1,780	15.96	2,648		7.64	
MW-5	10/29/2018	99.00	6.10	92.90	<0.001	<0.001	<0.001	<0.002	316	683	1,720	16.21	3,061		7.26	
MW-5	1/30/2019	99.00	9.46	89.54	0.0019	0.0021	<0.001	<0.002	1,130	2,910	1,580	10.27	3,190		7.70	
MW-5	4/29/2019	99.00	11.30	87.70	<0.001	<0.001	<0.001	<0.002	227	488	1,580	7.41	3,240		7.19	
MW-5	7/29/2019	99.00	8.03	90.97	<0.001	<0.001	<0.001	<0.002	< 6.00	319	1,400	13.55	2,935		7.33	
MW-5	1/8/2020	99.00	8.71	90.29	<0.001	<0.001	<0.001	<0.001	336	836	2,310	10.66	3,301	0.71	7.08	172.5
MW-5	4/28/2020	99.00	11.35	87.65	<0.001	<0.001	<0.001	<0.001	367	829	2,200	8.88	3,538	1.66	6.99	123.0
MW-5	7/15/2020	99.00	9.60	89.40	<0.001	<0.001	<0.001	<0.001	346	831	2,220	15.94	2,506	1.24	7.01	146.8
MW-5	10/13/2020	99.00	7.25	91.75	0.0016	0.0016	<0.001	<0.001	284	693	1,880	15.39	3,203	3.79	7.13	116.6
MW-5	1/13/2021	99.00	9.74	89.26	<0.001	<0.001	<0.001	<0.001	306	755	2,040	11.41	2,946	3.76	6.96	69.3
MW-5	4/15/2021	99.00	12.08	86.92	<0.001	<0.001	<0.001	<0.001	331	790	2,100	7.78	3,239	3.33	7.06	168.5
MW-5	7/8/2021	99.00	10.36	88.64	<0.001	<0.001	<0.001	<0.001	305	720	2,000	14.64	2,715	3.08	7.25	104.1
MW-5	11/30/2021	99.00	7.85	91.15	<0.00100	0.00112	<0.00100	<0.00100	298	725	2,050	14.14	3,355.1	4.80	7.07	80.5
MW-5	1/27/2022	99.00	9.60	89.40	<0.00100	<0.00100	<0.00100	<0.00100	307	762	1,980	11.51	1,963.8	5.85	8.18	-56.7
MW-5	4/21/2022	99.00	11.62	87.38	<0.00100	<0.00100	<0.00100	<0.00100	328	790	2,060	10.22	2,742.5	7.08	8.31	-33.4
MW-5	9/20/2022	99.00	7.3	91.70	<0.001	<0.001	<0.001	<0.001	179	520	1,700	21.06	2,174.8	5.06	7.56	200.9
MW-5	11/18/2022	99.00	7.88	91.12	<0.001	<0.001	<0.001	<0.001	199	696	1,780	12.85	2,858.4	5.29	7.53	80.7
MW-5	1/26/2023	99.00	9.80	89.20	<0.001	<0.001	<0.001	<0.001	392	555	1,920	10.65	2,506.1	7.67	7.21	177.5
MW-5	6/9/2023	99.00	10.80	88.20	<0.001	<0.001	<0.001	<0.001	309	674	2,220	14.06	3,074.6	4.84	7.32	78.1
MW-5	9/20/2023	99.00	6.27	92.73	<0.001	<0.001	<0.001	<0.001	313	833	2,360	18.74	3,126.7	3.43	7.36	-44.4
MW-5	12/15/2023	99.00	8.14	90.86	<0.001	<0.001	<0.001	<0.001	288	635	1,940	12.10	2,544.6	1.85	7.35	32.2
MW-5	2/16/2024	99.00	10.10	88.90	<0.001	<0.001	<0.001	<0.001	279	581	1,900	7.67	2,269.5	4.80	7.29	110.9
MW-5	5/16/2024	99.00	11.68	87.32	<0.001	<0.001	<0.001	<0.001	324	573	2,180	11.81	2,760.1	4.80	7.18	239.7
MW-6	1/26/2016	98.80	8.28	90.52	0.0039	0.0022	<0.001	<0.001	312	718	2,250	11.78	2,692		7.24	
MW-6	4/26/2016	98.80	9.98	88.82	<0.001	<0.001	<0.001	<0.001	371	751	2,200	9.80	3,059		7.45	
MW-6	7/26/2016	98.80	7.00	91.80	<0.001	<0.001	<0.001	<0.001	264	550	2,340	13.40	3,068		7.16	
MW-6	10/31/2016	98.80	6.72	92.08	<0.001	<0.001	<0.001	<0.001	60	204	1,700	15.38	3,283		7.38	
MW-6	1/30/2017	98.80	9.42	89.38	0.0018	0.0018	<0.001	<0.001	387	1,110	1,780	12.26	2,957		7.17	
MW-6	4/27/2017	98.80	11.12	87.68	<0.001	<0.001	<0.001	<0.002	358	812	2,350	10.69	3,030		7.35	
MW-6	7/24/2017	98.80	7.03	91.77	<0.001	<0.001	<0.001	<0.002	236	564	1,800	13.18	3,014		7.09	
MW-6	10/27/2017	98.80	5.38	93.42	0.0019	0.0012	<0.001	<0.002	69	167	2,510	16.91	3,338		7.73	
MW-6	1/29/2018	98.80	9.00	89.80	<0.001	<0.001	<0.001	<0.002	526	1,470	2,510	13.65	3,294		8.45	

**Groundwater Elevation and Analytical Data**  
**Groundwater Monitoring Report**  
Expedition Water Solutions - EWS #13  
23360 County Road 54, Greeley, CO 80631

Sample ID	Sample Date	Reference Elevation (ft)	Depth To Water (ft)	Groundwater Elevation (ft)	Benzene (mg/L)	Toluene (mg/L)	Ethyl-Benzene (mg/L)	Xylenes (mg/L)	Chloride (mg/L)	Sulfate (mg/L)	TDS (mg/L)	Temperature (°C)	Specific Conductance (µS/cm)	Dissolved Oxygen (mg/L)	pH	ORP (mV)
CECMC MCL	-	-	-	-	0.005	1	0.7	10	1.25 x BG	1.25 x BG	1.25 x BG	-	-	-	-	-
MW-6	4/12/2018	98.80	10.97	87.83	<0.001	<0.001	<0.001	<0.002	390	1,130	2,540	11.86	3,347		7.27	
MW-6	7/24/2018	98.80	7.92	90.88	0.015	0.014	<0.001	<0.0028	451	1,070	1,840	16.80	2,790		7.73	
MW-6	10/29/2018	98.80	6.00	92.80	<0.001	<0.001	<0.001	<0.002	269	602	1,720	19.39	3,026		7.26	
MW-6	1/30/2019	98.80	9.38	89.42	0.001	<0.001	<0.001	<0.002	989	2,520	1,560	13.82	3,219		7.30	
MW-6	4/29/2019	98.80	11.24	87.56	<0.001	<0.001	<0.001	<0.002	233	570	1,570	9.66	3,211		7.16	
MW-6	7/29/2019	98.80	7.88	90.92	<0.001	<0.001	<0.001	<0.002	258	647	1,540	14.99	2,999		7.38	
MW-6	1/8/2020	98.80	8.64	90.16	<0.001	<0.001	<0.001	<0.001	331	821	2,340	12.38	3,299	0.65	7.04	173.2
MW-6	4/28/2020	98.80	11.28	87.52	<0.001	<0.001	<0.001	<0.001	358	804	2,170	10.42	3,482	1.24	6.93	113.5
MW-6	7/15/2020	98.80	9.40	89.40	Unable to Perform Groundwater Monitoring Due to Obstruction in Well											
MW-6	10/13/2020	98.80	7.13	91.67	<0.001	<0.001	<0.001	<0.001	263	673	1,910	14.85	3,355	3.14	7.28	121.0
MW-6	1/13/2021	98.80	9.64	89.16	<0.001	<0.001	<0.001	<0.001	313	771	2,100	11.80	2,909	2.19	7.11	111.3
MW-6	4/15/2021	98.80	12.02	86.78	<0.001	<0.001	<0.001	<0.001	335	791	2,080	8.66	2,936	2.54	7.01	191.1
MW-6	7/8/2021	98.80	10.23	88.57	<0.001	<0.001	<0.001	<0.001	344	821	2,110	14.58	2,677	3.66	7.22	109.3
MW-6	11/30/2021	98.80	7.76	91.04	<b>0.0368</b>	<0.00100	<0.00100	<0.00100	303	744	2,050	15.34	3,001.7	5.88	7.00	77.4
MW-6	1/27/2022	98.80	9.51	89.29	<0.00100	<0.00100	<0.00100	<0.00100	302	750	1,990	13.53	2,021.7	4.55	8.12	-61.9
MW-6	4/21/2022	98.80	11.53	87.27	<0.00100	<0.00100	<0.00100	<0.00100	330	798	2,060	11.97	2,490.7	5.43	8.26	-48.6
MW-6	9/20/2022	98.80	7.1	91.70	<0.001	<0.001	<0.001	<0.001	158	481	1,520	21.15	2,047.1	3.68	7.37	236.3
MW-6	11/18/2022	98.80	7.80	91.00	<0.001	<0.001	<0.001	<0.001	193	689	1,740	10.98	2,749.0	3.81	7.64	125.5
MW-6	1/26/2023	98.80	9.70	89.10	<0.001	<0.001	<0.001	<0.001	397	550	1,860	9.55	2,497.3	7.28	7.20	180.8
MW-6	6/9/2023	98.80	10.70	88.10	<0.001	<0.001	<0.001	<0.001	308	680	2,120	12.85	2,662.8	4.24	7.19	106.9
MW-6	9/20/2023	98.80	6.11	92.69	<0.001	<0.001	<0.001	<0.001	303	765	2,200	19.07	2,921.8	3.64	7.39	-43.7
MW-6	12/15/2023	98.80	8.04	90.76	<0.001	<0.001	<0.001	<0.001	294	650	1,980	9.60	2,855.5	1.85	7.48	32.1
MW-6	2/16/2024	98.80	10.00	88.80	<0.001	<0.001	<0.001	<0.001	276	573	1,960	6.68	2,142.2	4.83	7.35	108.9
MW-6	5/16/2024	98.80	11.58	87.22	<0.001	<0.001	<0.001	<0.001	346	577	2,200	13.55	2,920.4	3.87	7.15	230.8
MW-7	7/26/2016	95.20	3.45	91.75	<0.001	<0.001	<0.001	<0.001	306	674	2,630	13.50	3,424		6.60	
MW-7	1/30/2017	95.20	5.43	89.77	<0.001	<0.001	<0.001	<0.001	318	988	1,730	8.60	2,912		6.85	
MW-7	7/24/2017	95.20	3.68	91.52	<0.001	<0.001	<0.001	<0.002	267	573	1,800	13.92	3,475		6.60	
MW-7	1/29/2018	95.20	5.02	90.18	<0.001	<0.001	<0.001	<0.002	576	1,440	2,610	8.34	3,403		8.91	
MW-7	7/24/2018	95.20	4.75	90.45	<0.001	<0.001	<0.001	<0.002	400	851	1,850	13.95	2,630		8.12	
MW-7	1/30/2019	95.20	5.39	89.81	<0.001	<0.001	<0.001	<0.002	835	1,900	1,640	7.92	3,361		7.36	
MW-7	7/29/2019	95.20	4.39	90.81	<0.001	<0.001	<0.001	<0.002	210	541	1,590	13.12	3,216		7.44	
MW-7	1/8/2020	95.20	4.65	90.55	<0.001	<0.001	<0.001	<0.001	358	808	2,200	9.42	3,238	0.16	7.04	96.1
MW-7	4/28/2020	95.20	7.28	87.92	<0.001	<0.001	<0.001	<0.001	398	870	2,310	10.70	3,597	0.00	6.22	158.1
MW-7	7/15/2020	95.20	6.22	88.98	<0.001	<0.001	<0.001	<0.001	450	986	2,320	16.50	2,625	0.41	6.76	170.1
MW-7	10/13/2020	95.20	3.41	91.79	<0.001	<0.001	<0.001	<0.001	343	795	2,200	14.17	3,627	1.06	7.39	125.5
MW-7	1/13/2021	95.20	5.67	89.53	<0.001	<0.001	<0.001	<0.001	336	809	2,180	11.53	3,007	2.95	7.08	7.8
MW-7	4/15/2021	95.20	8.01	87.19	<0.001	<0.001	<0.001	<0.001	397	866	2,310	8.72	3,392	0.73	7.04	140.9
MW-7	7/8/2021	95.20	6.79	88.41	<0.001	<0.001	<0.001	<0.001	357	1,010	2,010	14.15	2,416	2.69	7.34	102.8
MW-7	11/30/2021	95.20	3.87	91.33	<0.00100	<0.00100	<0.00100	<0.00100	316	748	2,100	12.86	2,804.4	5.53	7.17	94.5
MW-7	1/27/2022	95.20	5.57	89.63	<0.00100	<0.00100	<0.00100	<0.00100	316	768	2,000	9.83	2,602.1	6.09	8.36	-49.9
MW-7	4/21/2022	95.20	7.60	87.60	<0.00100	<0.00100	<0.00100	<0.00100	379	835	2,190	9.93	3,043.9	6.95	8.19	-18.6
MW-7	9/20/2022	95.20	3.65	91.55	<0.001	<0.001	<0.001	<0.001	222	684	2,060	22.59	2,468.6	2.98	7.46	210.9
MW-7	11/18/2022	95.20	3.91	91.29	<0.001	<0.001	<0.001	<0.001	223	760	1,860	10.93	2,517.8	4.94	7.49	130.1
MW-7	1/26/2023	95.20	5.75	89.45	<0.001	<0.001	<0.001	<0.001	412	537	1,940	9.31	2,718.3	6.62	7.22	188.9
MW-7	6/9/2023	95.20	6.75	88.45	<0.001	<0.001	<0.001	<0.001	384	788	2,440	13.75	2,886.6	3.96	7.19	93.6
MW-7	9/20/2023	95.20	2.74	92.46	<0.001	<0.001	<0.001	<0.001	300	655	2,040	16.82	2,726.6	1.73	7.39	-137.2
MW-7	12/15/2023	95.20	4.10	91.10	<0.001	<0.001	<0.001	<0.001	324	704	2,100	10.30	2,985.0	1.72	7.19	30.5
MW-7	2/16/2024	95.20	5.60	89.60	<0.001	<0.001	<0.001	<0.001	352	674	2,280	6.40	399.44	3.40	7.25	116.7
MW-7	5/16/2024	95.20	7.74	87.46	<0.001	<0.001	<0.001	<0.001	396	620	2,380	11.18	3,000	4.81	7.27	229.2

**Groundwater Elevation and Analytical Data**  
**Groundwater Monitoring Report**  
 Expedition Water Solutions - EWS #13  
 23360 County Road 54, Greeley, CO 80631

Sample ID	Sample Date	Reference Elevation (ft)	Depth To Water (ft)	Groundwater Elevation (ft)	Benzene (mg/L)	Toluene (mg/L)	Ethyl- Benzene (mg/L)	Xylenes (mg/L)	Chloride (mg/L)	Sulfate (mg/L)	TDS (mg/L)	Temperature (°C)	Specific Conductance (µS/cm)	Dissolved Oxygen (mg/L)	pH	ORP (mV)
CECMC MCL	-	-	-	-	0.005	1	0.7	10	1.25 x BG	1.25 x BG	1.25 x BG	-	-	-	-	-

**Notes**

A blank data box indicates that the analysis or measurement was not completed during the specified monitoring event.

CECMC MCL references groundwater quality standards from CECMC Table 915-1 (*January 15, 2021*).

CECMC MCL of inorganic compounds is defined as a concentration below 250 mg/L (chloride, sulfate) or less than 1.25 x local background (chloride, sulfate, TDS).

**Bold** values indicate concentration at or in excess of COGCC MCL.

BG = background concentration

CECMC = Colorado Energy and Carbon Management Commission

MCL = maximum contaminant level

INA = monitoring well inaccessible

ORP = oxidation reduction potential

TDS = total dissolved solids





## Attachment A

---

### Laboratory Report and Chain of Custody

# Test Report



May 23, 2024

Client: CGRS, Inc.

Project: EWS 13

Lab ID: 2330

Date Samples Received: 5/16/2024

Sample Condition: The samples arrived intact and in appropriate sample containers.  
The samples were received within the temperature range specified in the test method(s) and/or with thermal preservation in process.

Comments:

Thank you for allowing eAnalytics Laboratory to provide laboratory services for you.

A handwritten signature in black ink, appearing to read "Chris Dieken".

Chris Dieken  
QA Manager

A handwritten signature in black ink, appearing to read "Todd Rhea".

Todd Rhea  
Lab Manager

**eAnalytics Laboratory**  
4130 Clydesdale Parkway Loveland CO 80538

**e**ANALYTICS  
LABORATORY

[illegible]

Lab ID # 2330

eAnalytics Laboratory  
4130 Clydesdale Parkway Loveland CO 80538  
(970) 667-6975

Page \_\_\_\_\_ of \_\_\_\_\_

**eAnalytics Laboratory**  
4130 Clydesdale Parkway Loveland CO 80538





Client:	CGRS, Inc.	Lab ID:	2330
Project:	EWS 13		
Analysis:	Volatile Organics - BTEX	Method:	EPA8260

Sample Name	Benzene mg/L	Toluene mg/L	Ethyl- Benzene mg/L	Total Xylenes mg/L	Date Sampled	Date Analyzed	Lab ID
MW-1	<0.001	<0.001	<0.001	<0.001	05/16/24	05/17/24	2330 1
MW-2	<0.001	<0.001	<0.001	<0.001	05/16/24	05/17/24	2330 2
MW-3	<0.001	<0.001	<0.001	<0.001	05/16/24	05/17/24	2330 3
MW-4	<0.001	<0.001	<0.001	<0.001	05/16/24	05/21/24	2330 4
MW-5	<0.001	<0.001	<0.001	<0.001	05/16/24	05/21/24	2330 5
MW-6	<0.001	<0.001	<0.001	<0.001	05/16/24	05/21/24	2330 6
MW-7	<0.001	<0.001	<0.001	<0.001	05/16/24	05/21/24	2330 7



Client:	CGRS, Inc.	Lab ID:	2330
Project:	EWS 13		
Analysis:	Anion-Chloride Anion-Sulfate	Method:	EPA300.0 / SM4500-Cl C EPA300.0 / EPA375.4

Sample Name	Chloride mg/L	Sulfate- SO4 mg/L	Date Sampled	Date Analyzed	Lab ID
MW-1	269	468	05/16/24	05/21/24	2330 1
MW-2	310	545	05/16/24	05/21/24	2330 2
MW-3	329	570	05/16/24	05/21/24	2330 3
MW-4	287	488	05/16/24	05/21/24	2330 4
MW-5	324	573	05/16/24	05/21/24	2330 5
MW-6	346	577	05/16/24	05/21/24	2330 6
MW-7	396	620	05/16/24	05/21/24	2330 7



Client:	CGRS, Inc.	Lab ID:	2330
Project:	EWS 13		
Analysis:	Total Dissolved Solids (TDS)	Method:	EPA160.1/SM2540C

Sample Name	TDS mg/L	Date Sampled	Date Analyzed	Lab ID
MW-1	1880	05/16/24	05/22/24	2330 1
MW-2	2080	05/16/24	05/22/24	2330 2
MW-3	2200	05/16/24	05/22/24	2330 3
MW-4	1940	05/16/24	05/22/24	2330 4
MW-5	2180	05/16/24	05/22/24	2330 5
MW-6	2200	05/16/24	05/22/24	2330 6
MW-7	2380	05/16/24	05/22/24	2330 7



Client:

CGRS, Inc.

Lab ID:

2330

Project:

EWS 13

Method:

EPA8260

Sample Name	Dibromo- fluoromethane % Recovery	1,2 Dichloro- ethane-D4 % Recovery	Toluene-D8 % Recovery	4-Bromo- fluorobenzene % Recovery	Date Sampled	Date Analyzed	Lab ID
MW-1	99	100	100	91	05/16/24	05/17/24	2330 1
MW-2	102	99	101	92	05/16/24	05/17/24	2330 2
MW-3	100	100	101	90	05/16/24	05/17/24	2330 3
MW-4	103	98	100	94	05/16/24	05/21/24	2330 4
MW-5	100	99	101	96	05/16/24	05/21/24	2330 5
MW-6	100	100	100	93	05/16/24	05/21/24	2330 6
MW-7	103	100	101	92	05/16/24	05/21/24	2330 7





Client:

CGRS, Inc.

Lab ID:

2330

Project:

EWS 13

Water		Benzene	Toluene	Ethyl-Benzene	Total Xylenes	QC Start Date
Method Blank		<0.001	<0.001	<0.001	<0.001	
		mg/L	mg/L	mg/L	mg/L	
Lab Control Sample	70%-130%	92	93	90	92	05/17/24
		93	95	92	93	05/21/24