



October 30, 2020

Mr. Jim Goddard  
Expedition Water Solutions  
2015 Clubhouse Drive, Suite 201  
Greeley, Colorado 80634

Via E-Mail: [jgoddard@expedition-water.com](mailto:jgoddard@expedition-water.com)

Subject: Quarterly Groundwater Monitoring Report – 4<sup>th</sup> Quarter 2020  
Expedition Water Solutions  
EWS #13  
23360 County Road 54  
Greeley, Colorado 80631  
CGRS Project #: 1-12456-18304aa

Mr. Goddard:

This report documents the groundwater monitoring activities performed by CGRS, Inc. (CGRS), at the Expedition Water Solutions (EWS) #13 facility located in Greeley, Colorado, as shown in the Site Location Map. Quarterly groundwater monitoring was performed on October 13, 2020 and consisted of obtaining groundwater levels from all accessible monitoring wells, measuring in-situ water quality parameters, and collection of groundwater quality samples for laboratory analyses from monitoring well locations.

Water quality samples were obtained from seven groundwater monitoring wells (MW-1, MW-2, MW-3, MW-4, MW-5, MW-6, and MW-7) and submitted to Origins Laboratory in Denver, Colorado for analysis of benzene, toluene, ethylbenzene, and total xylenes (BTEX), total dissolved solids (TDS), chloride, and sulfate. In-situ field parameters consisting of temperature, specific conductance, dissolved oxygen (DO), pH, and oxidation-reduction potential (ORP) were measured and documented after sampling each monitoring well. Water quality analytical results and Chain of Custody documentation are included in Attachment A, summarized with historical data in Table 1, and depicted in the Groundwater Sample Location Map.

A review of groundwater analytical data indicate that all BTEX analytes from the groundwater quality samples submitted for analysis were below laboratory method detection limits (MDLs), with the exception of MW-5. Analytical results reported concentrations of benzene and toluene of 0.00164 mg/L and 0.00163 mg/L, respectively. The reported concentrations of benzene and toluene in MW-5 are below the Colorado Oil and Gas Conservation Commission (COGCC) maximum allowable concentrations (MACs) of 0.005 mg/L for benzene and 1.0 mg/L for toluene. Additionally, all inorganic analytes represent normal background water quality conditions historically observed at this facility.

To calculate groundwater elevation, depth to groundwater was measured in monitoring wells MW-1, MW-2, MW-3, MW-4, MW-5, MW-6, and MW-7 and subtracted from surveyed reference elevations, as shown in Table 1. Review of the most recent sample data shows depth to groundwater varied between 3.41 feet below top of well casing (TOC) in monitoring well MW-7 and 7.25 feet below TOC in monitoring well MW-5. The inferred groundwater flow direction is to the north-northeast at a calculated hydraulic gradient of 0.001 ft/ft, as measured between wells MW-7 and MW-2. Inferred water table elevation contours are illustrated in the Groundwater Elevation Map.



At the request of EWS, CGRS will continue to perform groundwater monitoring activities, which will include obtaining water level measurements, obtaining in-situ field measurements, and collecting groundwater quality samples from project monitoring wells on a quarterly basis. The next monitoring event is scheduled for January 2021. If you have any questions regarding this report, or the project itself, please contact Drezden Kinnaird at [dkinnaird@cgrs.com](mailto:dkinnaird@cgrs.com).

Sincerely,  
**CGRS, Inc.**

John Acker  
Staff Geologist

Reviewed by,

Drezden Kinnaird  
Project Manager  
Environmental Scientist

Enclosures:

- Site Location Map
- Groundwater Sample Map
- Groundwater Elevation Map
- Table 1 – Groundwater Elevation and Analytical Data
- Attachment A – Groundwater Laboratory Report and Chain of Custody Documentation

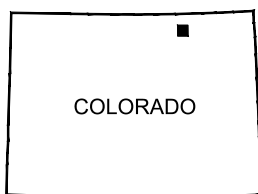
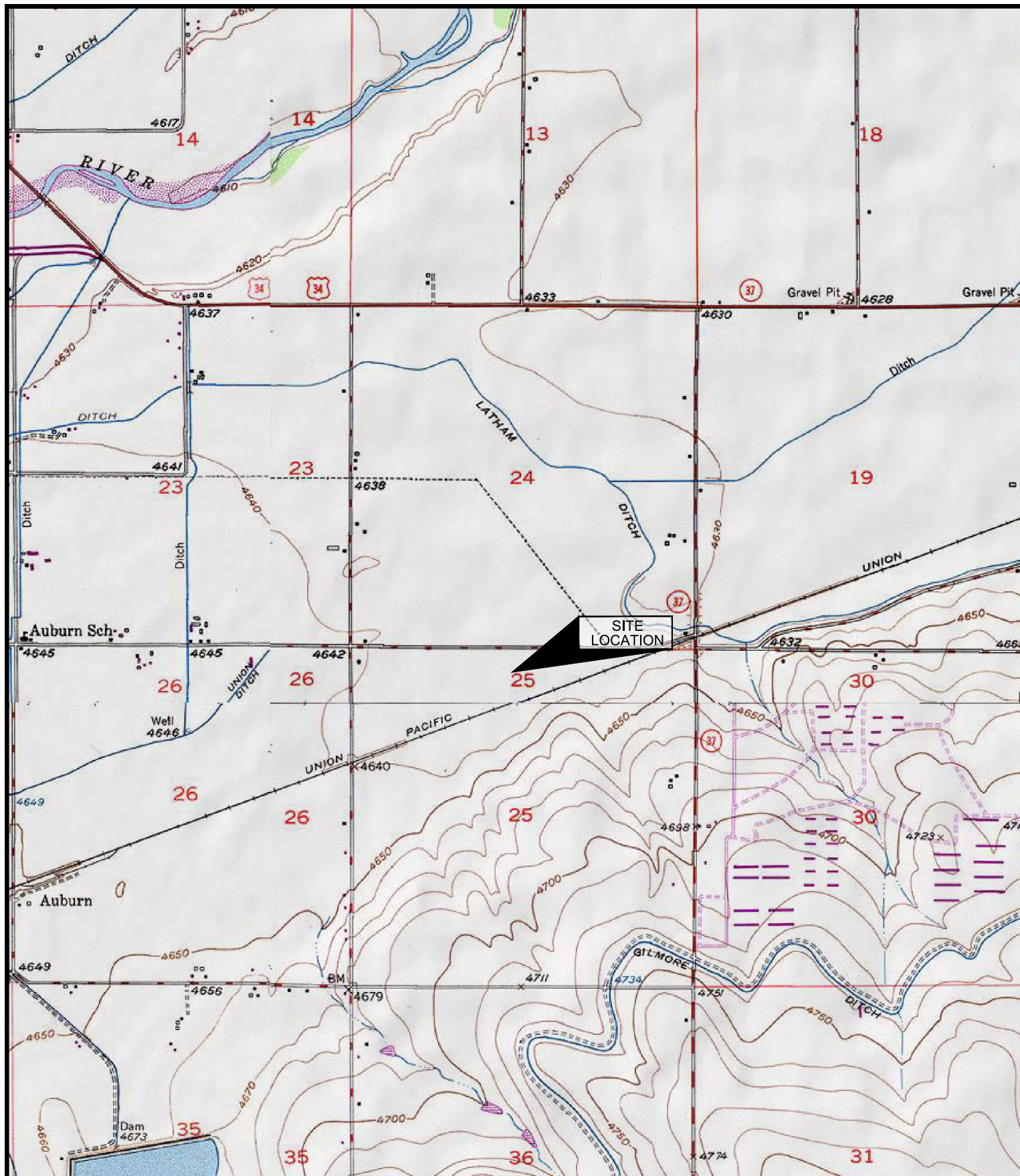
Ec: Mr. Dave Gage; Expedition Water Solutions; [dgage@expedition-water.com](mailto:dgage@expedition-water.com)  
Mr. Ben Frissell; Weld County Department of Public Health & Environment; [bfrissell-durley@weldgov.com](mailto:bfrissell-durley@weldgov.com)  
Ms. Danielle Serna – Weld County Department of Public Health & Environment; [dserna@weldgov.com](mailto:dserna@weldgov.com)



## Maps

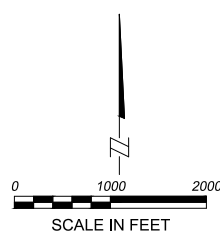
---

Site Location Map  
Groundwater Sample Location Map  
Groundwater Elevation Map



COLORADO

■ QUADRANGLE LOCATION



### SITE LOCATION MAP

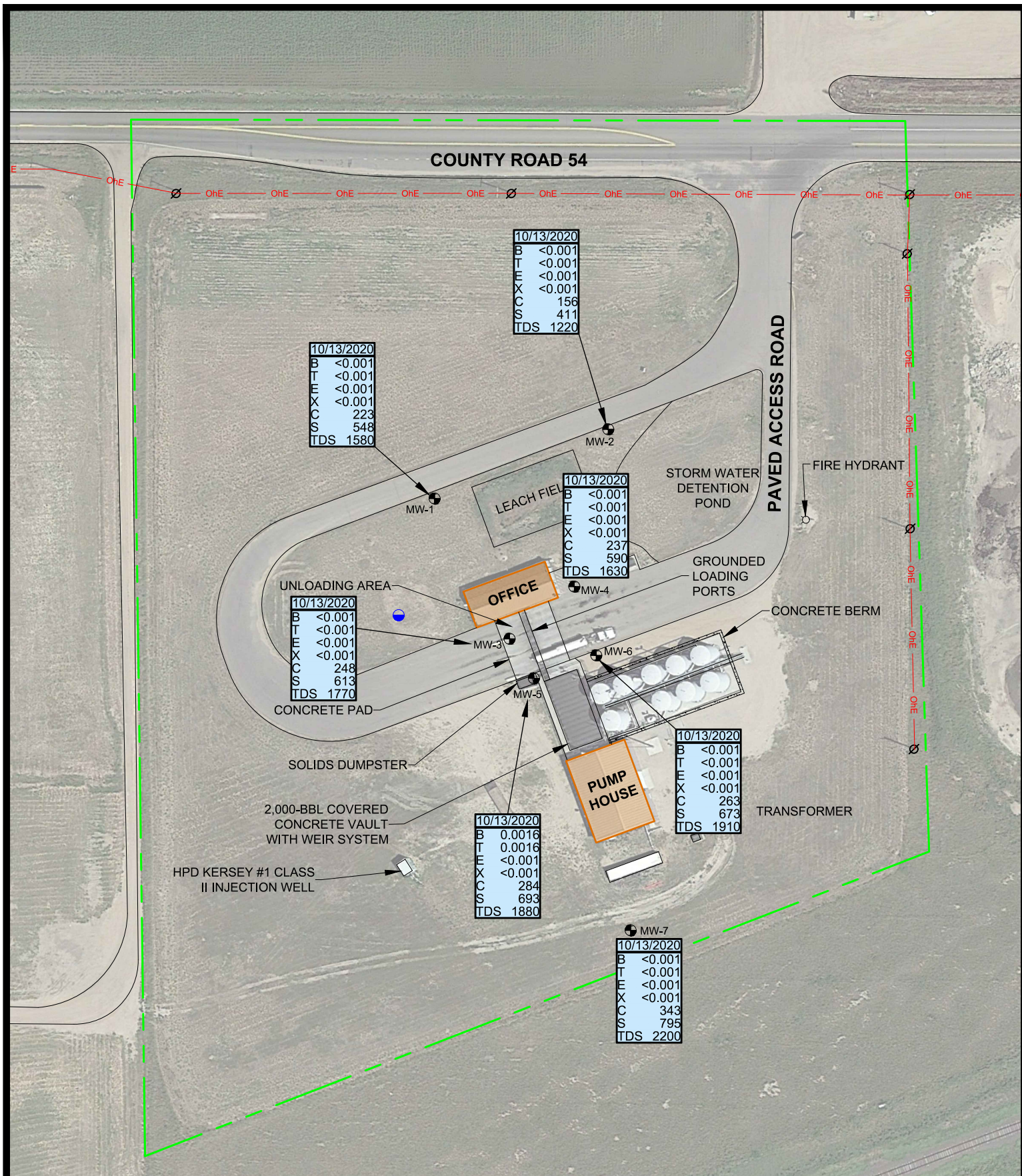
EXPEDITION WATER SOLUTIONS  
EWS #13  
23360 COUNTY ROAD 54  
GREELEY, COLORADO 80631

PROJECT:  
1-12456-18304aa  
DATE:  
01/28/2020

DRAFT:  
CLB  
REVIEW:  
JAA





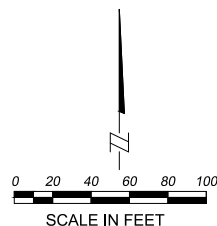


#### LEGEND

- MW-1 MONITORING WELL
- DOMESTIC WATER WELL
- Ø UTILITY POLE
- OhE — OVERHEAD ELECTRIC
- APPROXIMATE PROPERTY BOUNDARY

#### SAMPLE DATE

B	BENZENE (mg/L)
T	TOLUENE (mg/L)
E	ETHYLBENZENE (mg/L)
X	TOTAL XYLENES (mg/L)
C	CHLORIDE (mg/L)
S	SULFATES (mg/L)
TDS	TOTAL DISSOLVED SOLIDS (mg/L)



#### GROUNDWATER SAMPLE MAP

October 13, 2020  
EXPEDITION WATER SOLUTIONS  
EWS #13  
23360 COUNTY ROAD 54  
GREELEY, COLORADO 80631

PROJECT:  
1-12456-18304aa

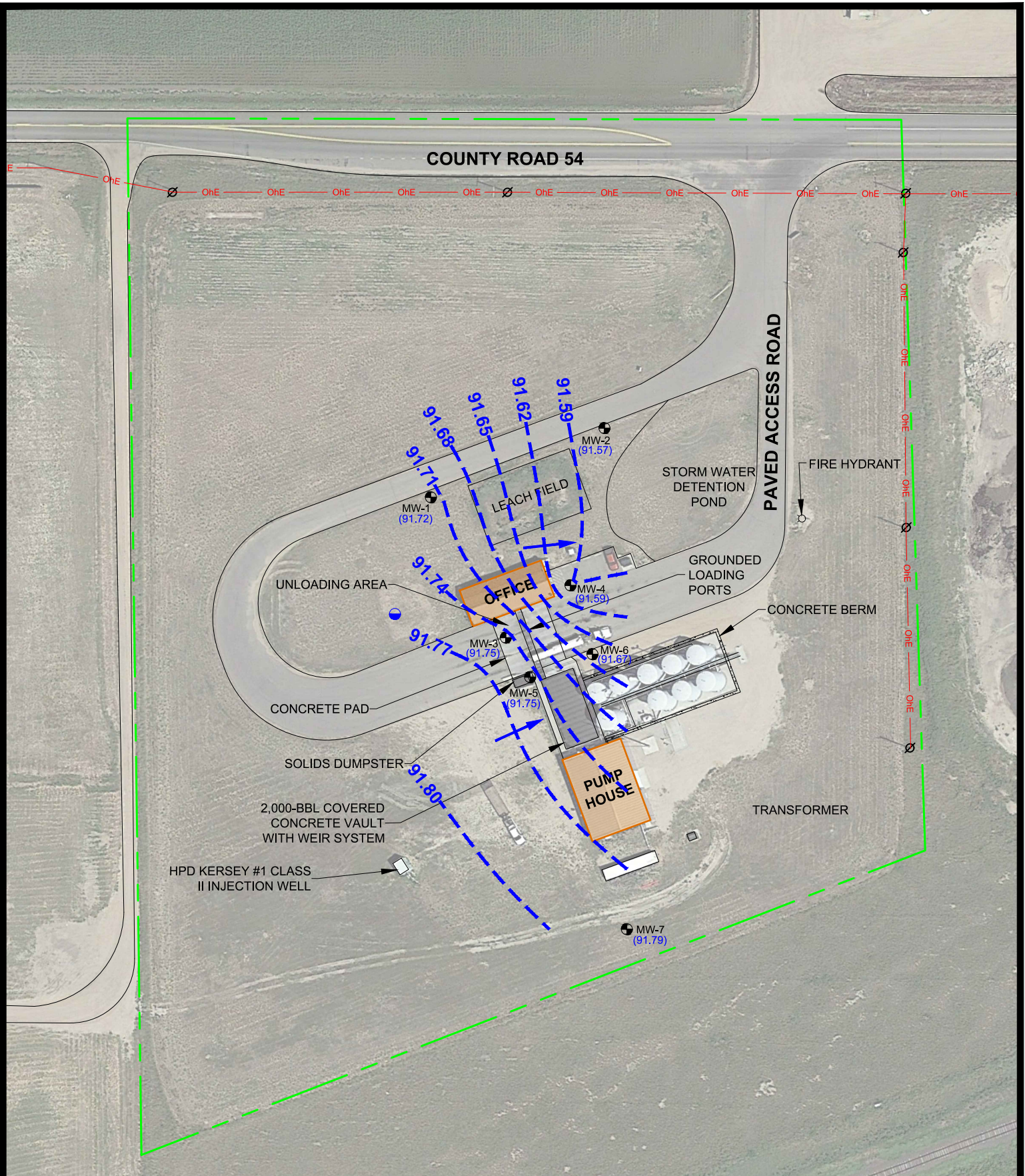
DATE:  
10/23/2020

DRAFT:  
CLB

REVIEW:

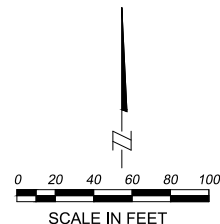






#### LEGEND

- MW-1 MONITORING WELL
- DOMESTIC WATER WELL
- (91.72) GROUNDWATER ELEVATION (FEET)
- OhE OVERHEAD ELECTRIC
- APPROXIMATE PROPERTY BOUNDARY
- GROUNDWATER ELEVATION CONTOUR
- INFERRED FLOW DIRECTION
- UTILITY POLE



#### GROUNDWATER ELEVATION MAP

October 13, 2020  
EXPEDITION WATER SOLUTIONS  
EWS #13  
23360 COUNTY ROAD 54  
GREELEY, COLORADO 80631

1-12456-18304aa

DATE:  
10/23/2020

DRAFT:  
CLB





**Table 1**

---

Groundwater Elevation and Analytical Data

Table 1

## Groundwater Elevation and Analytical Data

Groundwater Monitoring Report  
Expedition Water Solutions - EWS #13  
23360 County Road 54, Greeley, CO 80631

Sample ID	Sample Date	Reference Elevation (ft)	Depth To Water (ft)	Groundwater Elevation (ft)	Benzene (mg/L)	Toluene (mg/L)	Ethyl-Benzene (mg/L)	Xylenes (mg/L)	Chloride (mg/L)	Sulfate (mg/L)	TDS (mg/L)	Temperature (°C)	Specific Conductance (µS/cm)	Dissolved Oxygen (mg/L)	pH	ORP (mV)
MAC	-	-	-	-	0.005	1	0.7	10	1.25 x BG*	1.25 x BG*	1.25 x BG*	-	-	-	-	-
MDL	-	-	-	-	Various	Various	Various	Various	Various	Various	Various	-	-	-	-	-
MW-1	1/26/2016	96.10	5.66	90.44	<0.001	<0.001	<0.001	<0.001	298	733	2,280	10.13	2,890			7.18
MW-1	7/26/2016	96.10	4.24	91.86	<0.001	<0.001	<0.001	<0.001	308	845	2,530	17.01	3,322			7.15
MW-1	1/30/2017	96.10	6.75	89.35	<0.001	<0.001	<0.001	<0.001	340	1,050	1,830	11.74	3,039			7.06
MW-1	7/24/2017	96.10	4.24	91.86	<0.001	<0.001	<0.001	<0.001	225	617	1,740	16.88	3,289			7.10
MW-1	1/29/2018	96.10	6.30	89.80	<0.001	<0.001	<0.001	<0.001	382	993	2,320	9.62	3,033			8.50
MW-1	7/24/2018	96.10	4.95	91.15	<0.001	<0.001	<0.001	<0.001	373	900	1,660	17.95	2,636			7.81
MW-1	1/30/2019	96.10	6.73	89.37	<0.001	<0.001	<0.001	<0.001	1,280	3,410	1,480	9.40	3,023			7.45
MW-1	7/29/2019	96.10	5.01	91.09	<0.001	<0.001	<0.001	<0.001	274	670	1,440	16.00	2,938			5.27
MW-1	1/8/2020	96.10	5.97	90.13	<0.001	<0.001	<0.001	<0.001	321	802	2,250	10.46	3,194	0.38		7.09
MW-1	4/28/2020	96.10	9.24	86.86	<0.001	<0.001	<0.001	<0.001	342	821	2,140	9.24	3,388	0.31		7.05
MW-1	7/15/2020	96.10	7.43	88.67	<0.001	<0.001	<0.001	<0.001	369	923	2,310	16.51	2,637	3.85		7.33
MW-1	10/13/2020	96.10	4.38	91.72	<0.001	<0.001	<0.001	<0.001	223	548	1,580	15.30	2,599	4.15		7.17
MW-2	1/26/2016	96.40	6.18	90.22	<0.001	<0.001	<0.001	<0.001	330	801	2,250	10.21	2,780			7.03
MW-2	7/26/2016	96.40	4.60	91.80	<0.001	<0.001	<0.001	<0.001	292	743	2,330	14.80	3,020			7.14
MW-2	1/30/2017	96.40	7.31	89.09	<0.001	<0.001	<0.001	<0.001	379	1,200	1,890	11.44	3,152			7.01
MW-2	7/24/2017	96.40	4.49	91.91	<0.001	<0.001	<0.001	<0.001	228	593	1,780	18.37	1,618			7.13
MW-2	1/29/2018	96.40	6.86	89.54	<0.001	<0.001	<0.001	<0.001	402	1,090	2,560	10.86	3,322			8.77
MW-2	7/24/2018	96.40	5.24	91.16	<0.001	<0.001	<0.001	<0.001	406	967	1,720	17.18	2,692			7.74
MW-2	1/30/2019	96.40	4.27	92.13	<0.001	<0.001	<0.001	<0.001	1,220	3,230	1,500	10.57	3,114			7.43
MW-2	7/29/2019	96.40	5.40	91.00	<0.001	<0.001	<0.001	<0.001	299	692	1,450	15.32	3,028			5.45
MW-2	1/8/2020	96.40	6.51	89.89	<0.001	<0.001	<0.001	<0.001	322	851	2,410	11.06	3,302	1.95		7.06
MW-2	4/28/2020	96.40	9.15	87.25	<0.001	<0.001	<0.001	<0.001	355	831	2,120	9.84	3,475	3.06		6.90
MW-2	7/15/2020	96.40	7.83	88.57	<0.001	<0.001	<0.001	<0.001	380	953	2,320	16.73	2,766	5.64		7.44
MW-2	10/13/2020	96.40	4.83	91.57	<0.001	<0.001	<0.001	<0.001	156	411	1,220	15.71	1,922	4.76		7.21
MW-3	1/26/2016	99.00	8.41	90.59	<0.001	<0.001	<0.001	<0.001	335	734	2,310	10.90	2,775			7.28
MW-3	7/26/2016	99.00	7.14	91.86	<0.001	<0.001	<0.001	<0.001	298	758	2,410	14.39	3,157			7.10
MW-3	1/30/2017	99.00	9.54	89.46	<0.001	<0.001	<0.001	<0.001	286	1,090	1,800	11.32	2,963			7.06
MW-3	7/24/2017	99.00	7.20	91.80	<0.001	<0.001	<0.001	<0.001	235	592	1,800	14.20	3,147			7.07
MW-3	1/29/2018	99.00	9.10	89.90	<0.001	<0.001	<0.001	<0.001	435	1,210	2,270	10.30	3,060			8.76
MW-3	7/24/2018	99.00	7.78	91.22	<0.001	<0.001	<0.001	<0.001	382	902	1,690	15.15	2,479			7.67
MW-3	1/30/2019	99.00	9.51	89.49	<0.001	<0.001	<0.001	<0.001	1,230	3,180	1,570	10.28	3,173			7.29
MW-3	7/29/2019	99.00	7.99	91.01	<0.001	<0.001	<0.001	<0.001	248	620	1,140	13.62	2,938			7.32
MW-3	1/8/2020	99.00	8.75	90.25	<0.001	<0.001	<0.001	<0.001	340	853	2,320	10.31	3,296	0.50		7.11
MW-3	4/28/2020	99.00	11.40	87.60	<0.001	<0.001	<0.001	<0.001	357	803	2,120	9.48	3,451	0.21		7.05
MW-3	7/15/2020	99.00	9.50	89.50	<0.001	<0.001	<0.001	<0.001	375	938	2,300	14.99	2,532	2.50		7.37
MW-3	10/13/2020	99.00	7.25	91.75	<0.001	<0.001	<0.001	<0.001	248	613	1,770	16.79	3,034	2.95		7.31
MW-4	1/26/2016	98.70	8.33	90.37	<0.001	<0.001	<0.001	<0.001	322	751	2,250	11.70	2,718			7.29
MW-4	7/26/2016	98.70	6.97	91.73	<0.001	<0.001	<0.001	<0.001	302	722	2,190	13.80	2,901			7.31
MW-4	1/30/2017	98.70	9.44	89.26	<0.001	<0.001	<0.001	<0.001	352	1,100	1,770	12.07	2,872			7.12
MW-4	7/24/2017	98.70	6.98	91.72	<0.001	<0.001	<0.001	<0.001	248	620	1,770	13.50	2,909			7.27
MW-4	1/29/2018	98.70	8.98	89.72	<0.001	<0.001	<0.001	<0.001	428	1,180	2,400	11.20	3,138			8.40
MW-4	7/24/2018	98.70	8.10	90.60	0.0017	0.0015	<0.001	<0.001	439	1,020	1,730	15.42	2,484			7.62
MW-4	1/30/2019	98.70	9.41	89.29	<0.001	<0.001	<0.001	<0.001	1,300	3,340	1,580	10.78	3,220			7.31
MW-4	7/29/2019	98.70	7.82	90.88	<0.001	<0.001	<0.001	<0.001	276	670	1,450	12.64	3,013			6.98
MW-4	1/8/2020	98.70	8.65	90.05	<0.001	<0.001	<0.001	<0.001	330	818	2,280	11.94	3,182	0.16		7.04
MW-4	4/28/2020	98.70	11.29	87.41	<0.001	<0.001	<0.001	<0.001	308	232	2,180	9.61	3,522	0.09		6.97
MW-4	7/15/2020	98.70	9.28	89.42	<0.001	<0.001	<0.001	<0.001	373	949	2,310	15.09	2,515	2.36		7.26
MW-4	10/13/2020	98.70	7.11	91.59	<0.001	<0.001	<0.001	<0.001	237	590	1,630	16.46	2,821	2.52		7.24
MW-5	1/26/2016	99.00	8.41	90.59	<0.001	<0.001	<0.001	<0.001	313	722	2,110	9.31	2,658			7.20
MW-5	4/26/2016	99.00	10.07	88.93	<0.001	<0.001	<0.001	<0.001	371	725	2,290	8.33	2,991			6.68
MW-5	7/26/2016	99.00	7.16	91.84	<0.001	<0.001	<0.001	<0.001	270	650	2,250	15.29	2,939			7.21
MW-5	10/31/2016	99.00	6.87	92.13	<0.001	<0.001	<0.001	<0.001	382	1,050	1,800	16.20	3,364			7.39
MW-5	1/30/2017	99.00	9.50	89.50	<0.001	<0.001	<0.001	<0.001	362	1,070	1,760	11.29	2,960			7.09
MW-5	4/27/2017	99.00	11.21	87.79	<0.001	<0.001	<0.001	<0.001	423	933	2,410	8.95	3,146			7.26
MW-5	7/24/2017	99.00	7.22	91.78	<0.001	<0.001	<0.001	<0.001	207	498	1,780	14.65	2,950			7.17
MW-5	10/27/2017	99.00	5.48	93.52	<0.001	<0.001	<0.001	<0.001	283	830	2,510	14.81	3,317			7.68
MW-5	1/29/2018	99.00	9.09	89.91	<0.001	<0.001	<0.001	<0.001	454	1,270	2,460	9.78	3,243			8.30
MW-5	4/12/2018	99.00	11.00	88.00	<0.001	<0.001	<0.001	<0.001	362	1,100	2,570	8.41	3,337			7.34
MW-5	7/24/2018	99.00	8.00	91.00	0.0012	<0.001	<0.001	<0.001	505	1,160	1,780	15.96	2,648			7.64
MW-5	10/29/2018	99.00	6.10	92.90	<0.001	<0.001	<0.001	<0.001	316	683	1,720	16.21	3,061			7.26
MW-5	1/30/2019	99.00	9.46	89.54	0.0019	0.0021	<0.001	<0.001	1,130	2,910	1,580	10.27	3,190			7.70
MW-5	4/29/2019	99.00	11.30	87.70	<0.001	<0.001	<0.001	<0.001	227	488	1,580	7.41	3,240			7.19
MW-5	7/29/2019	99.00	8.03	90.97	<0.001	<0.001	<0.001	<0.001	<6.00	319	1,400	13.55	2,935			7.33
MW-5	1/8/2020	99.00	8.71	90.29	<0.001	<0.001	<0.001	<0.001	336	836	2,310	10.66	3,301	0.71		7.08
MW-5	4/28/2020	99.00	11.35	87.65	<0.001	<0.001	<0.001	<0.001	367	829	2,200	8.88	3,538	1.66		6.99
MW-5	7/15/2020	99.00	9.60	89.40	<0.001	<0.001	<0.001	<0.001	346	831	2,220	15.94	2,506	1.24		7.01
MW-5	10/13/2020	99.00	7.25	91.75	0.0016	0.0016	<0.001	<0.001	284	693	1,880	15.39	3,203	3.79		7.13
MW-6	1/26/2016	98.80	8.28	90.52	0.0039	0.0022	<0.001	<0.001	312	718	2,250	11.78	2,692			7.24
MW-6	4/26/2016	98.80	9.98	88.82	<0.001	<0.001	<0.001	<0.001	371	751	2,200	9.80	3,059			7.45
MW-6	7/26/2016	98.80	7.00	91.80	<0.001	<0.001	<0.001									



**Notes:**

A blank data box indicates that the analysis or measurement was not completed during the specified monitoring event  
Organic data in bold text indicate concentrations at or in excess of COGCC MACs

**Acronyms used in Table 1 are drawn from this list as needed**

- BG = Background
- DO = Dissolved Oxygen
- DRY = No liquid discovered at the specific sampling point
- INA = Inaccessible
- COGCC = Colorado Oil and Gas Conservation Commission
- MAC = COGCC Maximum Allowable Concentration; as indicated, or 1.25 times background concentration
- MDL = Laboratory Method Detection Limit
- ORP = Oxidation Reduction Potential
- TDS = Total Dissolved Solids



## **Attachment A**

---

### Groundwater Laboratory Report and Chain of Custody Documentation



October 21, 2020

CGRS, Inc

Drezden Kinnaird

1301 Academy Court

Fort Collins CO 80524

**Project Name - EWS #13**

**Project Number - 18304aa**

Attached are your analytical results for EWS #13 received by Origins Laboratory, Inc. October 14, 2020. This project is associated with Origins project number Y010199-01.

The analytical results in the following report were analyzed under the guidelines of EPA Methods. These methods are identified as follows; "SW" are defined in SW-846, "EPA" are defined in 40CFR part 136 and "SM" are defined in the most current revision of Standard Methods For the Examination of Water and Wastewater.

The analytical results apply specifically to the samples and analyses specified per the attached Chain of Custody. As such, this report shall not be reproduced except in full, without the written approval of Origin's laboratory.

Unless otherwise noted, the analytical results for all soil samples are reported on a wet weight basis. All analytical analyses were performed under NELAP guidelines unless noted by a data qualifier.

Any holding time exceedances, deviations from the method specifications or deviations from Origins Laboratory's Standard Operating Procedures are outlined in the case narrative.

Thank you for selecting Origins for your analytical needs. Please contact us with any questions concerning this report, or if we can help with anything at all.

Origins Laboratory, Inc.  
303.433.1322  
o-squad@oelabinc.com



1725 Elk Place, Denver, CO 80211 | Phone: 303.433.1322 | Fax: 303.265.9645



CGRS, Inc  
1301 Academy Court  
Fort Collins CO 80524

Drezden Kinnaird  
Project Number: 18304aa  
Project: EWS #13

### CROSS REFERENCE REPORT

Sample ID	Laboratory ID	Matrix	Date Sampled	Date Received
MW-1	Y010199-01	Water	October 13, 2020 9:15	10/14/2020 09:10
MW-2	Y010199-02	Water	October 13, 2020 9:45	10/14/2020 09:10
MW-3	Y010199-03	Water	October 13, 2020 10:15	10/14/2020 09:10
MW-4	Y010199-04	Water	October 13, 2020 10:45	10/14/2020 09:10
MW-5	Y010199-05	Water	October 13, 2020 11:15	10/14/2020 09:10
MW-6	Y010199-06	Water	October 13, 2020 11:45	10/14/2020 09:10
MW-7	Y010199-07	Water	October 13, 2020 12:15	10/14/2020 09:10

Origins Laboratory, Inc.



*The results in this report apply to the samples analyzed in accordance with the chain of custody document. This analytical report must be reproduced in its entirety.*

CGRS, Inc  
1301 Academy Court  
Fort Collins CO 80524

Drezden Kinnaird  
Project Number: 18304aa  
Project: EWS #13

**ORIGINS**  
LABORATORY, INC

4610199

1725 Elk Place, Denver, CO 80211  
Laboratory # - 303.433.1322

Client: CGRS, Inc  
Project: EWS #13  
Project Manager: Drezden Kinnaird  
Project Number: 18304aa

Number	Sample Identification	Matrix	Sample Date	Sample Time	Container	Qty	Analyses
01-001	MW-1	Water	10/13	0945	40mL Clear Vial Cool to 4°	3	Sulfate by 300.0 Chloride by 300.0 Total Dissolved BTEX by EPA Solids by 2540C 8260D
01-001	MW-1	Water			60_500mL Plastic Cool to 4°	1	Sulfate by 300.0 Chloride by 300.0 Total Dissolved BTEX by EPA Solids by 2540C 8260D
01-001	MW-1	Water			5_250mL Plastic Cool to 4°	1	Sulfate by 300.0 Chloride by 300.0 Total Dissolved BTEX by EPA Solids by 2540C 8260D
02-001	MW-2	Water		0945	60_500mL Plastic Cool to 4°	1	Sulfate by 300.0 Chloride by 300.0 Total Dissolved BTEX by EPA Solids by 2540C 8260D
02-001	MW-2	Water			5_250mL Plastic Cool to 4°	1	Sulfate by 300.0 Chloride by 300.0 Total Dissolved BTEX by EPA Solids by 2540C 8260D
02-001	MW-2	Water			40mL Clear Vial Cool to 4°	3	Sulfate by 300.0 Chloride by 300.0 Total Dissolved BTEX by EPA Solids by 2540C 8260D

Temperature on Receipt: 23  
Turn Around Time:  
Same Day: ☐ 72-hr: ☒  
24-hr: ☐ Standard: ☐  
48-hr: ☐

Relinquished By: [Signature] Date / Time: 10-14-00 910  
Received By: [Signature] Date / Time: 10-14-00 910

Relinquished By: [Signature] Date / Time: 10/13/00  
Received By: [Signature] Date / Time: 10/13/00

Origins Laboratory, Inc.

[Signature]

The results in this report apply to the samples analyzed in accordance with the chain of custody document. This analytical report must be reproduced in its entirety.

CGRS, Inc  
1301 Academy Court  
Fort Collins CO 80524

Drezden Kinnaird  
Project Number: 18304aa  
Project: EWS #13

ORIGINS  
LABORATORY, INC

4010199

1725 Elk Place, Denver, CO 80211  
Laboratory # - 303.433.1322

03-001	MW-3	Water	10/13	1015	to 500mL Plastic Cool to 4°	1	Sulfate by 300.0 Chloride by 300.0 Total Dissolved BTEX by EPA Solids by 2540C 8260D
03-001	MW-3	Water			to 250mL Plastic Cool to 4°	1	Sulfate by 300.0 Chloride by 300.0 Total Dissolved BTEX by EPA Solids by 2540C 8260D
03-001	MW-3	Water			to 40mL Clear Vial Cool to 4°	3	Sulfate by 300.0 Chloride by 300.0 Total Dissolved BTEX by EPA Solids by 2540C 8260D
04-001	MW-4	Water		1015	to 40mL Clear Vial Cool to 4°	3	Sulfate by 300.0 Chloride by 300.0 Total Dissolved BTEX by EPA Solids by 2540C 8260D
04-001	MW-4	Water			to 250mL Plastic Cool to 4°	1	Sulfate by 300.0 Chloride by 300.0 Total Dissolved BTEX by EPA Solids by 2540C 8260D
04-001	MW-4	Water			to 500mL Plastic Cool to 4°	1	Sulfate by 300.0 Chloride by 300.0 Total Dissolved BTEX by EPA Solids by 2540C 8260D
05-001	MW-5	Water		1115	to 250mL Plastic Cool to 4°	1	Sulfate by 300.0 Chloride by 300.0 Total Dissolved BTEX by EPA Solids by 2540C 8260D

Relinquished By: Jordan A. Merrill Date / Time: 10-13-16 16:00  
Relinquished By: [Signature] Date / Time: 10-14-16 10:10  
Received By: \_\_\_\_\_ Date / Time: \_\_\_\_\_  
Received By: \_\_\_\_\_ Date / Time: \_\_\_\_\_

Temperature on Receipt: 23  
Turn Around Time: \_\_\_\_\_  
Same Day: ☐ 72-hr: ☒  
24-hr: ☐ Standard: ☐  
48-hr: ☐

Origins Laboratory, Inc.

*Jordan A. Merrill*

The results in this report apply to the samples analyzed in accordance with the chain of custody document. This analytical report must be reproduced in its entirety.



CGRS, Inc

1301 Academy Court

Fort Collins

CO

80524

Drezden Kinnaird

Project Number: 18304aa

Project: EWS #13

# ORIGINS

LABORATORY, INC

4610199

1725 Elk Place, Denver, CO 80211

Laboratory # - 303.433.1322

05-001	MW-5	Water	10/13	115	to 500mL Plastic Cool to 4°	1	Sulfate by 300.0 Chloride by 300.0 Total Dissolved Solids by EPA 8260D
05-001	MW-5	Water			to 40mL Clear Vial Cool to 4°	3	Sulfate by 300.0 Chloride by 300.0 Total Dissolved Solids by EPA 8260D
06-001	MW-6	Water		1145	to 500mL Plastic Cool to 4°	1	Sulfate by 300.0 Chloride by 300.0 Total Dissolved Solids by EPA 8260D
06-001	MW-6	Water			to 250mL Plastic Cool to 4°	1	Sulfate by 300.0 Chloride by 300.0 Total Dissolved Solids by EPA 8260D
06-001	MW-6	Water			to 40mL Clear Vial Cool to 4°	3	Sulfate by 300.0 Chloride by 300.0 Total Dissolved Solids by EPA 8260D
07-001	MW-7	Water		1215	to 250mL Plastic Cool to 4°	1	Sulfate by 300.0 Chloride by 300.0 BTEX by EPA 8260D Total Dissolved Solids by EPA 8260D
07-001	MW-7	Water			to 500mL Plastic Cool to 4°	1	Sulfate by 300.0 Chloride by 300.0 BTEX by EPA 8260D Total Dissolved Solids by EPA 8260D

Temperature on Receipt: 72°

Turn Around Time:

Same Day: ☐ 72-hr: ☒  
24-hr: ☐ Standard: ☐  
48-hr: ☐

Relinquished By: [Signature] Date / Time: 10/14/10 9:10

Received By: [Signature] Date / Time: 10/14/10 9:10

Relinquished By: [Signature] Date / Time: 10/13/10 1:00

Received By: [Signature] Date / Time: 10/13/10 1:00

Origins Laboratory, Inc.

[Signature]

The results in this report apply to the samples analyzed in accordance with the chain of custody document. This analytical report must be reproduced in its entirety.

CGRS, Inc  
1301 Academy Court  
Fort Collins CO 80524

Drezden Kinnaird  
Project Number: 18304aa  
Project: EWS #13

ORIGINS  
LABORATORY, INC

4010199

1725 Elk Place, Denver, CO 80211  
Laboratory # - 303.433.1322

07-001	MW-7	Water	10/13 12:15	3	Sulfate by 300.0 Chloride by 300.0 BTEX by EPA 8260D	Total Dissolved Solids by 2540C

Temperature on Receipt: 2.8  
Turn Around Time:  
Same Day: ☐ 72-hr: ☒  
24-hr: ☐ Standard  
48-hr: ☐

Relinquished By: [Signature] Date / Time: 10/14/20 4:10  
Received By: [Signature] Date / Time:

Relinquished By: [Signature] Date / Time: 10/13/20 1:00  
Received By: [Signature] Date / Time:

Origins Laboratory, Inc.

[Signature]

The results in this report apply to the samples analyzed in accordance with the chain of custody document. This analytical report must be reproduced in its entirety.

CGRS, Inc  
1301 Academy Court  
Fort Collins CO 80524

Drezden Kinnaird  
Project Number: 18304aa  
Project: EWS #13

Origins Laboratory

## Sample Receipt Checklist

F-012207-01-R1  
Effective Date: 01/09/12

Origins Work Order: Y010199

Client: CGRS

Client Project ID: EWS #13

Checklist Completed by: dm

Shipped Via: TD

Date/time completed: 10-14-20

(URS, FedEx, Hand Delivered, Pick-up, etc.)

Airbill #: N/A

Matrix(s) Received: (Check all that apply): Soil/Solid ☒ Water ☐ Other: ☐

Cooler Number/Temperature: 1 28 °C / °C / °C (Describe) °C

Thermometer ID: T003

Requirement Description	Yes	No	N/A	Comments (if any)
If samples require cooling, was the temperature between 0°C to ≤ 5°C <sup>(1)</sup> ?	<input checked="" type="checkbox"/>	<input type="checkbox"/>	<input type="checkbox"/>	
Is there ice present (document if blue ice is used)	<input checked="" type="checkbox"/>	<input type="checkbox"/>	<input type="checkbox"/>	
Are custody seals present on cooler? (if so, document in comments if they are signed and dated, broken or intact)	<input type="checkbox"/>	<input type="checkbox"/>	<input checked="" type="checkbox"/>	
Are custody seals present on each sample container? (if so, document in comments if they are signed and dated, broken or intact)	<input type="checkbox"/>	<input type="checkbox"/>	<input checked="" type="checkbox"/>	
Were all samples received intact <sup>(1)</sup> ?	<input checked="" type="checkbox"/>	<input type="checkbox"/>	<input type="checkbox"/>	
Was adequate sample volume provided <sup>(1)</sup> ?	<input checked="" type="checkbox"/>	<input type="checkbox"/>	<input type="checkbox"/>	
Are short holding time analytes or samples with HTs due within 48 hours present <sup>(1)</sup> ?	<input type="checkbox"/>	<input type="checkbox"/>	<input checked="" type="checkbox"/>	
Is a chain-of-custody (COC) present and filled out completely <sup>(1)</sup> ?	<input checked="" type="checkbox"/>	<input type="checkbox"/>	<input type="checkbox"/>	
Does the COC agree with the number and type of sample bottles received <sup>(1)</sup> ?	<input checked="" type="checkbox"/>	<input type="checkbox"/>	<input type="checkbox"/>	
Do the sample IDs on the bottle labels match the COC <sup>(1)</sup> ?	<input checked="" type="checkbox"/>	<input type="checkbox"/>	<input type="checkbox"/>	
Is the COC properly relinquished by the client with date and time recorded <sup>(1)</sup> ?	<input checked="" type="checkbox"/>	<input type="checkbox"/>	<input type="checkbox"/>	
For volatiles in water — is there headspace (> ¼ inch bubble) present? If yes, contact client and note in narrative.	<input type="checkbox"/>	<input checked="" type="checkbox"/>	<input type="checkbox"/>	
Are samples preserved that require preservation and was it checked <sup>(1)</sup> ? (note ID of confirmation instrument used in comments) / (preservation is not confirmed for subcontracted analyses in order to insure sample integrity) / (pH < 2 for samples preserved with HNO <sub>3</sub> , HCL, H <sub>2</sub> SO <sub>4</sub> ) / (pH > 10 for samples preserved with NaAsO <sub>2</sub> +NaOH, ZnAc+NaOH)	<input checked="" type="checkbox"/>	<input type="checkbox"/>	<input type="checkbox"/>	HCL
Additional Comments (if any):				

<sup>(1)</sup>if NO, then contact the client before proceeding with analysis and note date/time and person contacted as well as the corrective action to in the additional comments (above) and the case narrative.

Reviewed by (Project Manager) dm

10-15-20  
Date/Time Reviewed

Origins Laboratory, Inc.

*Jordan A. Merrill*

The results in this report apply to the samples analyzed in accordance with the chain of custody document. This analytical report must be reproduced in its entirety.



CGRS, Inc  
1301 Academy Court  
Fort Collins CO 80524

Drezden Kinnaird  
Project Number: 18304aa  
Project: EWS #13

## MW-1

10/13/2020 9:15:00AM

Analyte	Result	Reporting Limit	Units	Dilution	Batch	Analyst	Prepared	Analyzed	Notes
---------	--------	-----------------	-------	----------	-------	---------	----------	----------	-------

## GEL Laboratories, LLC

Y010199-01 (Water)

### Anions by EPA 300.0

Chloride	223	8.00	mg/L	40	2052192	JLD1	10/13/2020	10/16/2020	
Sulfate	548	16.0	"	"	"	JLD1	"	"	

### BTEX by EPA 8260D

Benzene	ND	1.00	ug/L	1	BOJ1501	ZZZ	10/15/2020	10/16/2020	Ua
Toluene	ND	1.00	"	"	"	ZZZ	"	"	Ua
Ethylbenzene	ND	1.00	"	"	"	ZZZ	"	"	Ua
Xylenes, total	ND	1.00	"	"	"	ZZZ	"	"	Ua

Surrogate: 1,2-Dichloroethane-d4	84.9 %	70-130			"	"	"	
Surrogate: Toluene-d8	102 %	70-130			"	"	"	
Surrogate: 4-Bromofluorobenzene	103 %	70-130			"	"	"	

### Total Dissolved Solids by 2540C

Total Dissolved Solids	1580	5.00	mg/L	1	BOJ1414	DJL	10/14/2020	10/15/2020	
------------------------	------	------	------	---	---------	-----	------------	------------	--

Origins Laboratory, Inc.



The results in this report apply to the samples analyzed in accordance with the chain of custody document. This analytical report must be reproduced in its entirety.

CGRS, Inc  
1301 Academy Court  
Fort Collins CO 80524

Drezden Kinnaird  
Project Number: 18304aa  
Project: EWS #13

## MW-2

10/13/2020 9:45:00AM

Analyte	Result	Reporting Limit	Units	Dilution	Batch	Analyst	Prepared	Analyzed	Notes
---------	--------	-----------------	-------	----------	-------	---------	----------	----------	-------

## GEL Laboratories, LLC

Y010199-02 (Water)

### Anions by EPA 300.0

Chloride	156	4.00	mg/L	20	2052192	JLD1	10/13/2020	10/15/2020	
Sulfate	411	16.0	"	40	"	JLD1	"	10/16/2020	

### BTEX by EPA 8260D

Benzene	ND	1.00	ug/L	1	BOJ1501	ZZZ	10/15/2020	10/16/2020	Ua
Toluene	ND	1.00	"	"	"	ZZZ	"	"	Ua
Ethylbenzene	ND	1.00	"	"	"	ZZZ	"	"	Ua
Xylenes, total	ND	1.00	"	"	"	ZZZ	"	"	Ua

Surrogate: 1,2-Dichloroethane-d4	85.1 %	70-130			"	"	"	
Surrogate: Toluene-d8	102 %	70-130			"	"	"	
Surrogate: 4-Bromofluorobenzene	102 %	70-130			"	"	"	

### Total Dissolved Solids by 2540C

Total Dissolved Solids	1220	5.00	mg/L	1	BOJ1414	DJL	10/14/2020	10/15/2020	
------------------------	------	------	------	---	---------	-----	------------	------------	--

Origins Laboratory, Inc.



The results in this report apply to the samples analyzed in accordance with the chain of custody document. This analytical report must be reproduced in its entirety.

CGRS, Inc  
1301 Academy Court  
Fort Collins CO 80524

Drezden Kinnaird  
Project Number: 18304aa  
Project: EWS #13

## MW-3

10/13/2020 10:15:00AM

Analyte	Result	Reporting Limit	Units	Dilution	Batch	Analyst	Prepared	Analyzed	Notes
---------	--------	-----------------	-------	----------	-------	---------	----------	----------	-------

## GEL Laboratories, LLC

Y010199-03 (Water)

### Anions by EPA 300.0

Chloride	248	8.00	mg/L	40	2052192	JLD1	10/13/2020	10/16/2020	
Sulfate	613	16.0	"	"	"	JLD1	"	"	

### BTEX by EPA 8260D

Benzene	ND	1.00	ug/L	1	BOJ1501	ZZZ	10/15/2020	10/16/2020	Ua
Toluene	ND	1.00	"	"	"	ZZZ	"	"	Ua
Ethylbenzene	ND	1.00	"	"	"	ZZZ	"	"	Ua
Xylenes, total	ND	1.00	"	"	"	ZZZ	"	"	Ua

Surrogate: 1,2-Dichloroethane-d4	85.7 %	70-130			"	"	"	
Surrogate: Toluene-d8	101 %	70-130			"	"	"	
Surrogate: 4-Bromofluorobenzene	102 %	70-130			"	"	"	

### Total Dissolved Solids by 2540C

Total Dissolved Solids	1770	5.00	mg/L	1	BOJ1414	DJL	10/14/2020	10/15/2020	
------------------------	------	------	------	---	---------	-----	------------	------------	--

Origins Laboratory, Inc.



The results in this report apply to the samples analyzed in accordance with the chain of custody document. This analytical report must be reproduced in its entirety.

CGRS, Inc  
1301 Academy Court  
Fort Collins CO 80524

Drezden Kinnaird  
Project Number: 18304aa  
Project: EWS #13

## MW-4

10/13/2020 10:45:00AM

Analyte	Result	Reporting Limit	Units	Dilution	Batch	Analyst	Prepared	Analyzed	Notes
---------	--------	-----------------	-------	----------	-------	---------	----------	----------	-------

## GEL Laboratories, LLC

Y010199-04 (Water)

### Anions by EPA 300.0

Chloride	237	8.00	mg/L	40	2052192	JLD1	10/13/2020	10/16/2020	
Sulfate	590	16.0	"	"	"	JLD1	"	"	

### BTEX by EPA 8260D

Benzene	ND	1.00	ug/L	1	BOJ1501	ZZZ	10/15/2020	10/16/2020	Ua
Toluene	ND	1.00	"	"	"	ZZZ	"	"	Ua
Ethylbenzene	ND	1.00	"	"	"	ZZZ	"	"	Ua
Xylenes, total	ND	1.00	"	"	"	ZZZ	"	"	Ua

Surrogate: 1,2-Dichloroethane-d4	86.3 %	70-130			"	"	"	
Surrogate: Toluene-d8	101 %	70-130			"	"	"	
Surrogate: 4-Bromofluorobenzene	102 %	70-130			"	"	"	

### Total Dissolved Solids by 2540C

Total Dissolved Solids	1630	5.00	mg/L	1	BOJ1414	DJL	10/14/2020	10/15/2020	
------------------------	------	------	------	---	---------	-----	------------	------------	--

Origins Laboratory, Inc.



The results in this report apply to the samples analyzed in accordance with the chain of custody document. This analytical report must be reproduced in its entirety.



CGRS, Inc  
1301 Academy Court  
Fort Collins CO 80524

Drezden Kinnaird  
Project Number: 18304aa  
Project: EWS #13

## MW-5

10/13/2020 11:15:00AM

Analyte	Result	Reporting Limit	Units	Dilution	Batch	Analyst	Prepared	Analyzed	Notes
---------	--------	-----------------	-------	----------	-------	---------	----------	----------	-------

## GEL Laboratories, LLC

Y010199-05 (Water)

### Anions by EPA 300.0

Chloride	284	8.00	mg/L	40	2052192	JLD1	10/13/2020	10/16/2020	
Sulfate	693	16.0	"	"	"	JLD1	"	"	

### BTEX by EPA 8260D

Benzene	1.64	1.00	ug/L	1	BOJ1501	ZZZ	10/15/2020	10/16/2020	
Toluene	1.63	1.00	"	"	"	ZZZ	"	"	
Ethylbenzene	ND	1.00	"	"	"	ZZZ	"	"	Ua
Xylenes, total	ND	1.00	"	"	"	ZZZ	"	"	Ua

Surrogate: 1,2-Dichloroethane-d4	87.0 %	70-130			"	"	"	
Surrogate: Toluene-d8	100 %	70-130			"	"	"	
Surrogate: 4-Bromofluorobenzene	104 %	70-130			"	"	"	

### Total Dissolved Solids by 2540C

Total Dissolved Solids	1880	5.00	mg/L	1	BOJ1414	DJL	10/14/2020	10/15/2020	
------------------------	------	------	------	---	---------	-----	------------	------------	--

Origins Laboratory, Inc.



The results in this report apply to the samples analyzed in accordance with the chain of custody document. This analytical report must be reproduced in its entirety.

CGRS, Inc  
1301 Academy Court  
Fort Collins CO 80524

Drezden Kinnaird  
Project Number: 18304aa  
Project: EWS #13

## MW-6

10/13/2020 11:45:00AM

Analyte	Result	Reporting Limit	Units	Dilution	Batch	Analyst	Prepared	Analyzed	Notes
---------	--------	-----------------	-------	----------	-------	---------	----------	----------	-------

## GEL Laboratories, LLC

Y010199-06 (Water)

### Anions by EPA 300.0

Chloride	263	8.00	mg/L	40	2052192	JLD1	10/13/2020	10/16/2020	
Sulfate	673	16.0	"	"	"	JLD1	"	"	

### BTEX by EPA 8260D

Benzene	ND	1.00	ug/L	1	BOJ1501	ZZZ	10/15/2020	10/16/2020	Ua
Toluene	ND	1.00	"	"	"	ZZZ	"	"	Ua
Ethylbenzene	ND	1.00	"	"	"	ZZZ	"	"	Ua
Xylenes, total	ND	1.00	"	"	"	ZZZ	"	"	Ua

Surrogate: 1,2-Dichloroethane-d4	84.8 %	70-130			"	"	"	
Surrogate: Toluene-d8	101 %	70-130			"	"	"	
Surrogate: 4-Bromofluorobenzene	102 %	70-130			"	"	"	

### Total Dissolved Solids by 2540C

Total Dissolved Solids	1910	5.00	mg/L	1	BOJ1414	DJL	10/14/2020	10/15/2020	
------------------------	------	------	------	---	---------	-----	------------	------------	--

Origins Laboratory, Inc.



The results in this report apply to the samples analyzed in accordance with the chain of custody document. This analytical report must be reproduced in its entirety.

CGRS, Inc  
1301 Academy Court  
Fort Collins CO 80524

Drezden Kinnaird  
Project Number: 18304aa  
Project: EWS #13

## MW-7

10/13/2020 12:15:00PM

Analyte	Result	Reporting Limit	Units	Dilution	Batch	Analyst	Prepared	Analyzed	Notes
---------	--------	-----------------	-------	----------	-------	---------	----------	----------	-------

## GEL Laboratories, LLC

Y010199-07 (Water)

### Anions by EPA 300.0

Chloride	343	10.0	mg/L	50	2052192	JLD1	10/13/2020	10/16/2020	
Sulfate	795	20.0	"	"	"	JLD1	"	"	

### BTEX by EPA 8260D

Benzene	ND	1.00	ug/L	1	BOJ1501	ZZZ	10/15/2020	10/16/2020	Ua
Toluene	ND	1.00	"	"	"	ZZZ	"	"	Ua
Ethylbenzene	ND	1.00	"	"	"	ZZZ	"	"	Ua
Xylenes, total	ND	1.00	"	"	"	ZZZ	"	"	Ua

Surrogate: 1,2-Dichloroethane-d4	89.4 %	70-130			"	"	"	
Surrogate: Toluene-d8	101 %	70-130			"	"	"	
Surrogate: 4-Bromofluorobenzene	105 %	70-130			"	"	"	

### Total Dissolved Solids by 2540C

Total Dissolved Solids	2200	5.00	mg/L	1	BOJ1414	DJL	10/14/2020	10/15/2020	
------------------------	------	------	------	---	---------	-----	------------	------------	--

Origins Laboratory, Inc.



The results in this report apply to the samples analyzed in accordance with the chain of custody document. This analytical report must be reproduced in its entirety.

CGRS, Inc  
1301 Academy Court  
Fort Collins CO 80524

Drezden Kinnaird  
Project Number: 18304aa  
Project: EWS #13

**Volatile Organic Compounds by GC/MS SW846 8260D - Quality Control**  
**Origins Laboratory, Inc.**

Analyte	Result	Reporting Limit	Units	Spike Level	Source Result	%REC	%REC Limits	RPD	RPD Limit	Notes
---------	--------	-----------------	-------	-------------	---------------	------	-------------	-----	-----------	-------

**Batch B0J1501 - EPA 5030B (Water)**

**Blank (B0J1501-BLK1)**

Prepared: 10/15/2020 Analyzed: 10/16/2020

Benzene	ND	1.00	ug/L							Ua
Toluene	ND	1.00	"							Ua
Ethylbenzene	ND	1.00	"							Ua
Xylenes, total	ND	1.00	"							Ua
Surrogate: 1,2-Dichloroethane-d4	52		"	62.5	82.8		70-130			
Surrogate: Toluene-d8	66		"	62.5	105		70-130			
Surrogate: 4-Bromofluorobenzene	65		"	62.5	103		70-130			

Origins Laboratory, Inc.



*The results in this report apply to the samples analyzed in accordance with the chain of custody document. This analytical report must be reproduced in its entirety.*



CGRS, Inc  
1301 Academy Court  
Fort Collins CO 80524

Drezden Kinnaird  
Project Number: 18304aa  
Project: EWS #13

**Volatile Organic Compounds by GC/MS SW846 8260D - Quality Control**  
**Origins Laboratory, Inc.**

Analyte	Result	Reporting Limit	Units	Spike Level	Source Result	%REC	%REC Limits	RPD	RPD Limit	Notes
---------	--------	-----------------	-------	-------------	---------------	------	-------------	-----	-----------	-------

**Batch B0J1501 - EPA 5030B (Water)**

**LCS (B0J1501-BS1)**

Prepared: 10/15/2020 Analyzed: 10/16/2020

Benzene	45.8	1.00	ug/L	50.0		91.6	70-130			
Toluene	46.1	1.00	"	50.0		92.2	70-130			
Ethylbenzene	46.5	1.00	"	50.0		93.0	70-130			
m,p-Xylene	88.5	2.00	"	100		88.5	70-130			
o-Xylene	45.9	1.00	"	50.0		91.9	70-130			
Surrogate: 1,2-Dichloroethane-d4	56		"	62.5		90.0	70-130			
Surrogate: Toluene-d8	64		"	62.5		103	70-130			
Surrogate: 4-Bromofluorobenzene	66		"	62.5		105	70-130			

Origins Laboratory, Inc.



*The results in this report apply to the samples analyzed in accordance with the chain of custody document. This analytical report must be reproduced in its entirety.*

CGRS, Inc  
1301 Academy Court  
Fort Collins CO 80524

Drezden Kinnaird  
Project Number: 18304aa  
Project: EWS #13

**Volatile Organic Compounds by GC/MS SW846 8260D - Quality Control**  
**Origins Laboratory, Inc.**

Analyte	Result	Reporting Limit	Units	Spike Level	Source Result	%REC	%REC Limits	RPD	RPD Limit	Notes
---------	--------	-----------------	-------	-------------	---------------	------	-------------	-----	-----------	-------

**Batch B0J1501 - EPA 5030B (Water)**

Matrix Spike (B0J1501-MS1)		Source: Y010212-01			Prepared: 10/15/2020 Analyzed: 10/16/2020					
Benzene	43.9	1.00	ug/L	50.0	ND	87.8	70-130			
Toluene	45.7	1.00	"	50.0	ND	91.4	70-130			
Ethylbenzene	45.6	1.00	"	50.0	ND	91.1	70-130			
m,p-Xylene	89.0	2.00	"	100	ND	89.0	70-130			
o-Xylene	45.1	1.00	"	50.0	ND	90.2	70-130			
Surrogate: 1,2-Dichloroethane-d4	56		"	62.5		89.8	70-130			
Surrogate: Toluene-d8	65		"	62.5		104	70-130			
Surrogate: 4-Bromofluorobenzene	66		"	62.5		106	70-130			

Origins Laboratory, Inc.



*The results in this report apply to the samples analyzed in accordance with the chain of custody document. This analytical report must be reproduced in its entirety.*

CGRS, Inc  
1301 Academy Court  
Fort Collins CO 80524

Drezden Kinnaird  
Project Number: 18304aa  
Project: EWS #13

**Volatile Organic Compounds by GC/MS SW846 8260D - Quality Control**  
**Origins Laboratory, Inc.**

Analyte	Result	Reporting Limit	Units	Spike Level	Source Result	%REC	%REC Limits	RPD	RPD Limit	Notes
---------	--------	-----------------	-------	-------------	---------------	------	-------------	-----	-----------	-------

**Batch B0J1501 - EPA 5030B (Water)**

Matrix Spike Dup (B0J1501-MSD1)		Source: Y010212-01			Prepared: 10/15/2020 Analyzed: 10/16/2020					
Benzene	47.3	1.00	ug/L	50.0	ND	94.5	70-130	7.35	20	
Toluene	48.1	1.00	"	50.0	ND	96.2	70-130	5.05	20	
Ethylbenzene	48.6	1.00	"	50.0	ND	97.3	70-130	6.50	20	
m,p-Xylene	94.1	2.00	"	100	ND	94.1	70-130	5.61	20	
o-Xylene	48.2	1.00	"	50.0	ND	96.4	70-130	6.69	20	
Surrogate: 1,2-Dichloroethane-d4	56		"	62.5		89.7	70-130			
Surrogate: Toluene-d8	64		"	62.5		103	70-130			
Surrogate: 4-Bromofluorobenzene	67		"	62.5		107	70-130			

Origins Laboratory, Inc.



*The results in this report apply to the samples analyzed in accordance with the chain of custody document. This analytical report must be reproduced in its entirety.*

CGRS, Inc  
1301 Academy Court  
Fort Collins CO 80524

Drezden Kinnaird  
Project Number: 18304aa  
Project: EWS #13

## Volatile Organic Compounds by GC/MS SW846 8260D - Quality Control

### Origins Laboratory, Inc.

Analyte	Result	Reporting Limit	Units	Spike Level	Source Result	%REC	%REC Limits	RPD	RPD Limit	Notes
---------	--------	-----------------	-------	-------------	---------------	------	-------------	-----	-----------	-------

## Classical Chemistry Parameters - Quality Control

### Origins Laboratory, Inc.

Analyte	Result	Reporting Limit	Units	Spike Level	Source Result	%REC	%REC Limits	RPD	RPD Limit	Notes
---------	--------	-----------------	-------	-------------	---------------	------	-------------	-----	-----------	-------

#### Batch B0J1414 - NO PREP

#### Blank (B0J1414-BLK1)

Prepared: 10/14/2020 Analyzed: 10/15/2020

Total Dissolved Solids	ND	5.00	mg/L
------------------------	----	------	------

#### LCS (B0J1414-BS1)

Prepared: 10/14/2020 Analyzed: 10/15/2020

Total Dissolved Solids	781	5.00	mg/L	716	109	85-115
------------------------	-----	------	------	-----	-----	--------

#### Duplicate (B0J1414-DUP1)

Source: Y010201-01

Prepared: 10/14/2020 Analyzed: 10/15/2020

Total Dissolved Solids	1880	5.00	mg/L	1860	0.910	20
------------------------	------	------	------	------	-------	----

Origins Laboratory, Inc.



The results in this report apply to the samples analyzed in accordance with the chain of custody document. This analytical report must be reproduced in its entirety.



CGRS, Inc  
1301 Academy Court  
Fort Collins CO 80524

Drezden Kinnaird  
Project Number: 18304aa  
Project: EWS #13

## Anions by EPA 300.0 - Quality Control GEL Laboratories, LLC

Analyte	Result	Reporting Limit	Units	Spike Level	Source Result	%REC	%REC Limits	RPD	RPD Limit	Notes
<b>Batch 2052192 -</b>										
<b>BLANK (1204669845-BLK)</b>					Prepared: Analyzed: 10/16/2020					
Chloride	ND	0.200	mg/L				-			U
Sulfate	ND	0.400	"				-			U
<b>LCS (1204669846-BKS)</b>					Prepared: Analyzed: 10/16/2020					
Chloride	4.81	0.200	mg/L	5.00		96.1	90-110			
Sulfate	9.76	0.400	"	10.0		97.6	90-110			
<b>DUP (1204669847 D)</b>					Source: Y010199-01 Prepared: Analyzed: 10/16/2020					
Chloride	224	8.00	mg/L		223		0-20	0.181	20	
Sulfate	548	16.0	"		548		0-20	0.0635	20	
<b>PS (1204669848 S)</b>					Source: Y010199-01 Prepared: Analyzed: 10/16/2020					
Sulfate	965	16.0	mg/L	10.0		104	90-110			
Chloride	436	8.00	"	5.00		106	90-110			

Origins Laboratory, Inc.



The results in this report apply to the samples analyzed in accordance with the chain of custody document. This analytical report must be reproduced in its entirety.

CGRS, Inc  
1301 Academy Court  
Fort Collins CO 80524

Drezden Kinnaird  
Project Number: 18304aa  
Project: EWS #13

### Notes and Definitions

Ua Sample is Non-Detect.

U Result not detected above the detection limit

ND Analyte NOT DETECTED at or above the reporting limit

RPD Relative Percent Difference

All soil results are reported at a wet weight basis.

Origins Laboratory, Inc.



*The results in this report apply to the samples analyzed in accordance with the chain of custody document. This analytical report must be reproduced in its entirety.*