



RADIAL CEMENT BOND  
GAMMA RAY  
CCL

Company		CHEVRON		Country USA	
Well		SHELTON G25-75HN		Well	
Field		WATTENBERG		Field	
County		WELD		County	
State		COLORADO		State	
Country		USA		Country	
Location:		API # : 05-123-35541		Other Services	
Permanent Datum		SEC 25 TWP 4N RGE 65W		Elevation	
Log Measured From		GL		K.B. 4824'	
Drilling Measured From		KB		D.F. 4823'	
				G.L. 4794'	
Date		5-16-23			
Run Number		1			
Depth Driller		11045'			
Depth Logger		1820'			
Bottom Logged Interval		1810'			
Top Log Interval		0			
Open Hole Size		13.75"			
Type Fluid		H2O			
Density / Viscosity		8.3#			
Max. Recorded Temp.		N/A			
Estimated Cement Top		N/A			
Time Well Ready		N/A			
Time Logger on Bottom		N/A			
Equipment Number		HSR-20			
Location		MILLIKEN			
Recorded By		G. GRAHAM			
Witnessed By		MR BOBBY ESPINOSA			
Borehole Record		Tubing Record			
Run Number		Bit		From	
		To		Size	
		Weight		From	
		To			
Casing Record		Size		Wgt/Ft	
Surface String		9+5/8"		36#	
Prot. String				Top	
Production String		7"		26#	
Liner				0	
				7382'	

<<< Fold Here >>>

All interpretations are opinions based on inferences from electrical or other measurements and we cannot and do not guarantee the accuracy or correctness of any interpretation, and we shall not, except in the case of gross or willful negligence on our part, be liable or responsible for any loss, costs, damages, or expenses incurred or sustained by anyone resulting from any interpretation made by any of our officers, agents or employees. These interpretations are also subject to our general terms and conditions set out in our current Price Schedule.

Comments

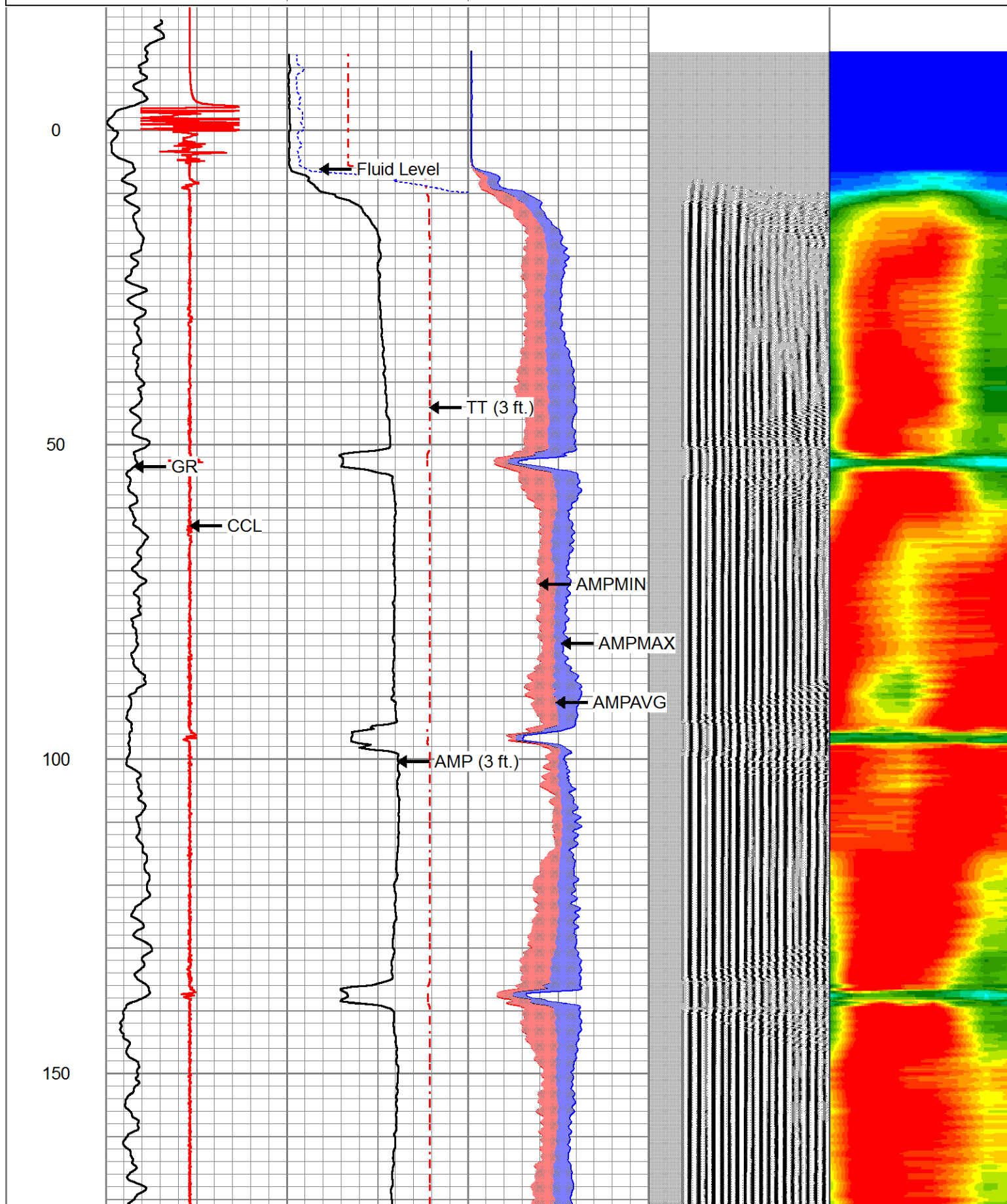
-20000 CCL 20000  
0 GR (GAPI) 150

AMP (3 ft.)  
(mV) 100  
TT (3 ft.)  
650 (usec) 150  
0 AMP3FT (mV) 20

0 AMPMIN 100  
0 AMPAVG 100  
0 AMPMAX 100

VDL (5 ft.)  
(usec) 200 1200

1 RADIAL MAP 7

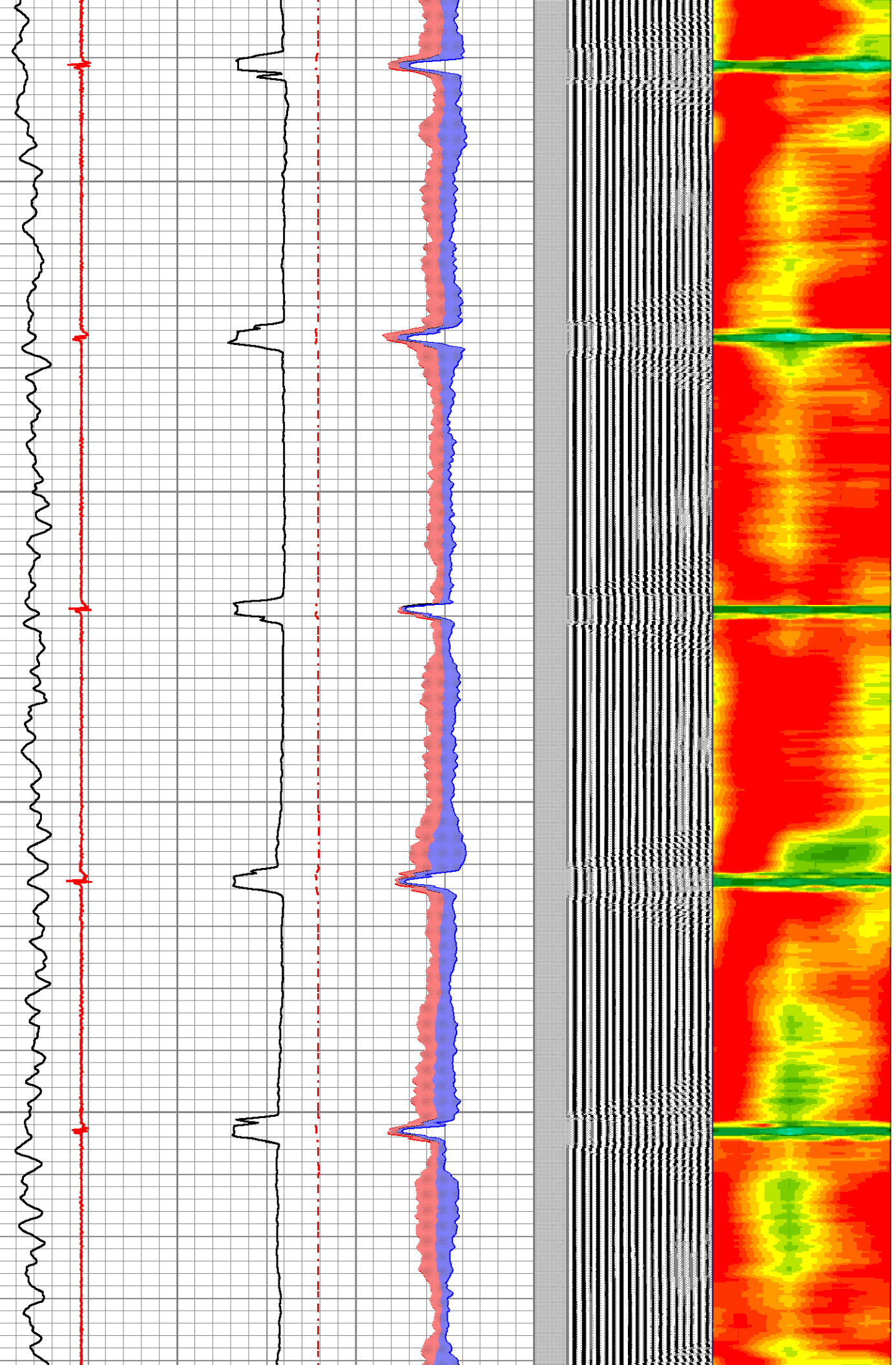


200

250

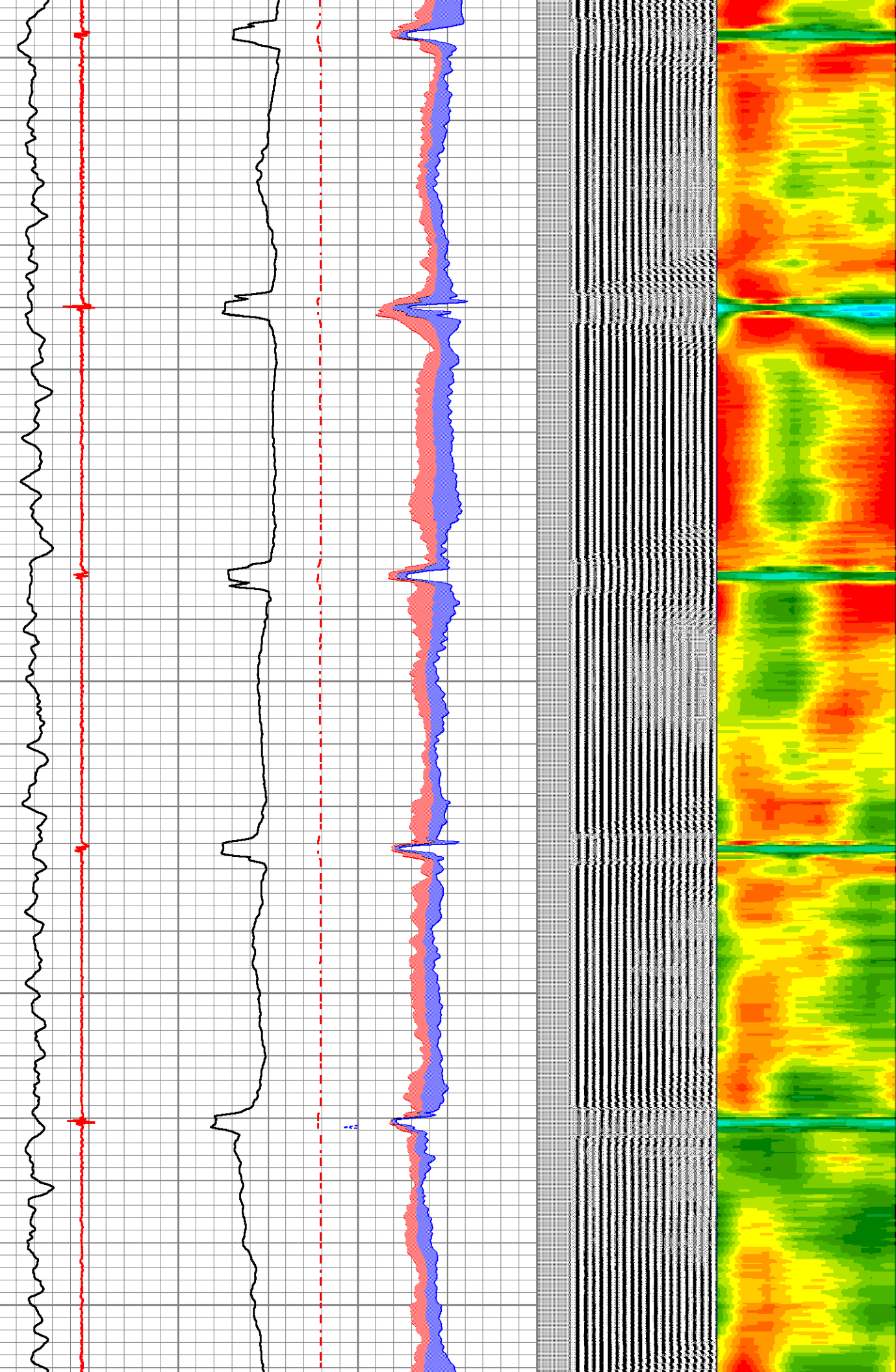
300

350





400  
450  
500  
550  
600

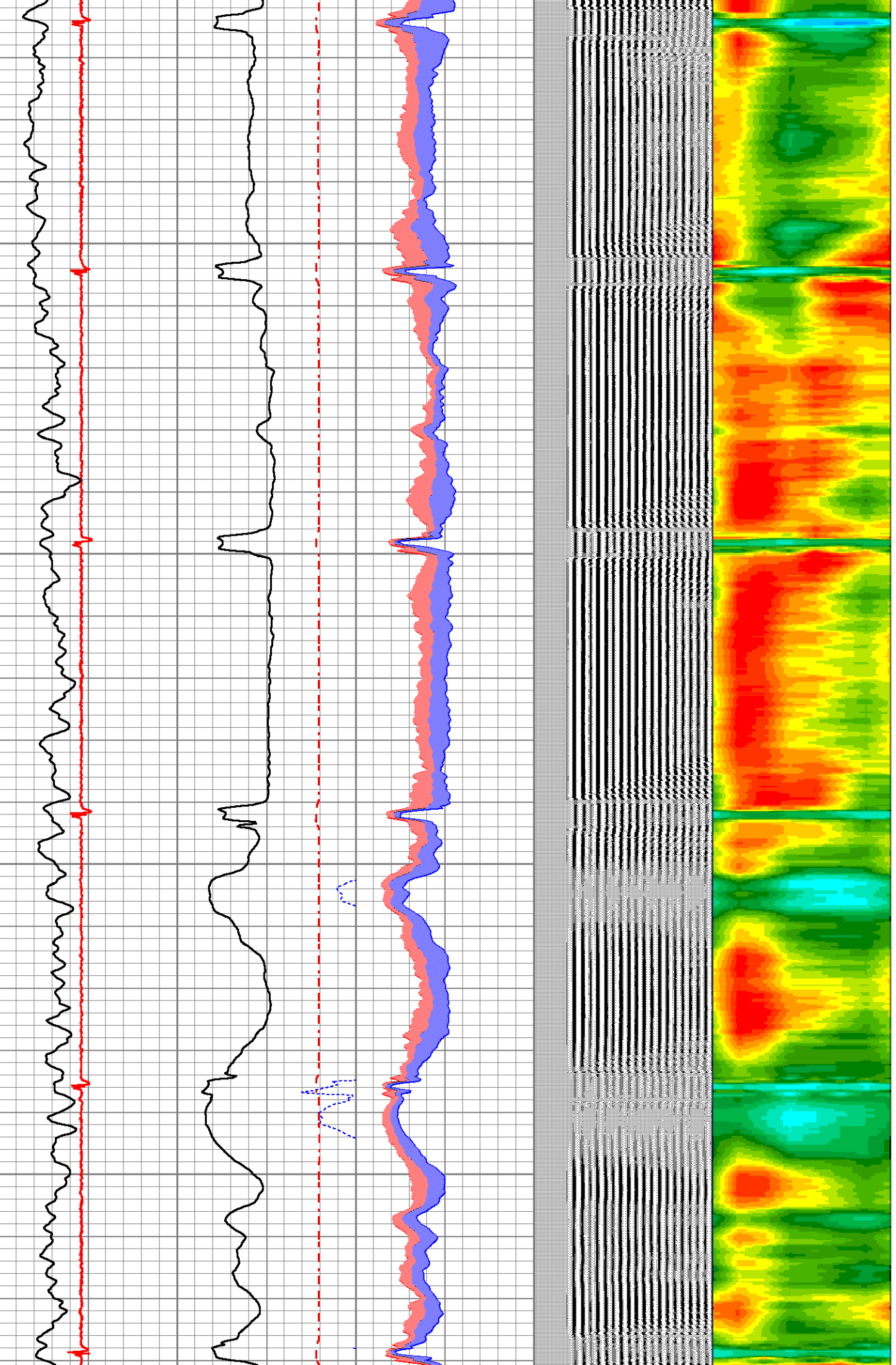


650

700

750

800



850

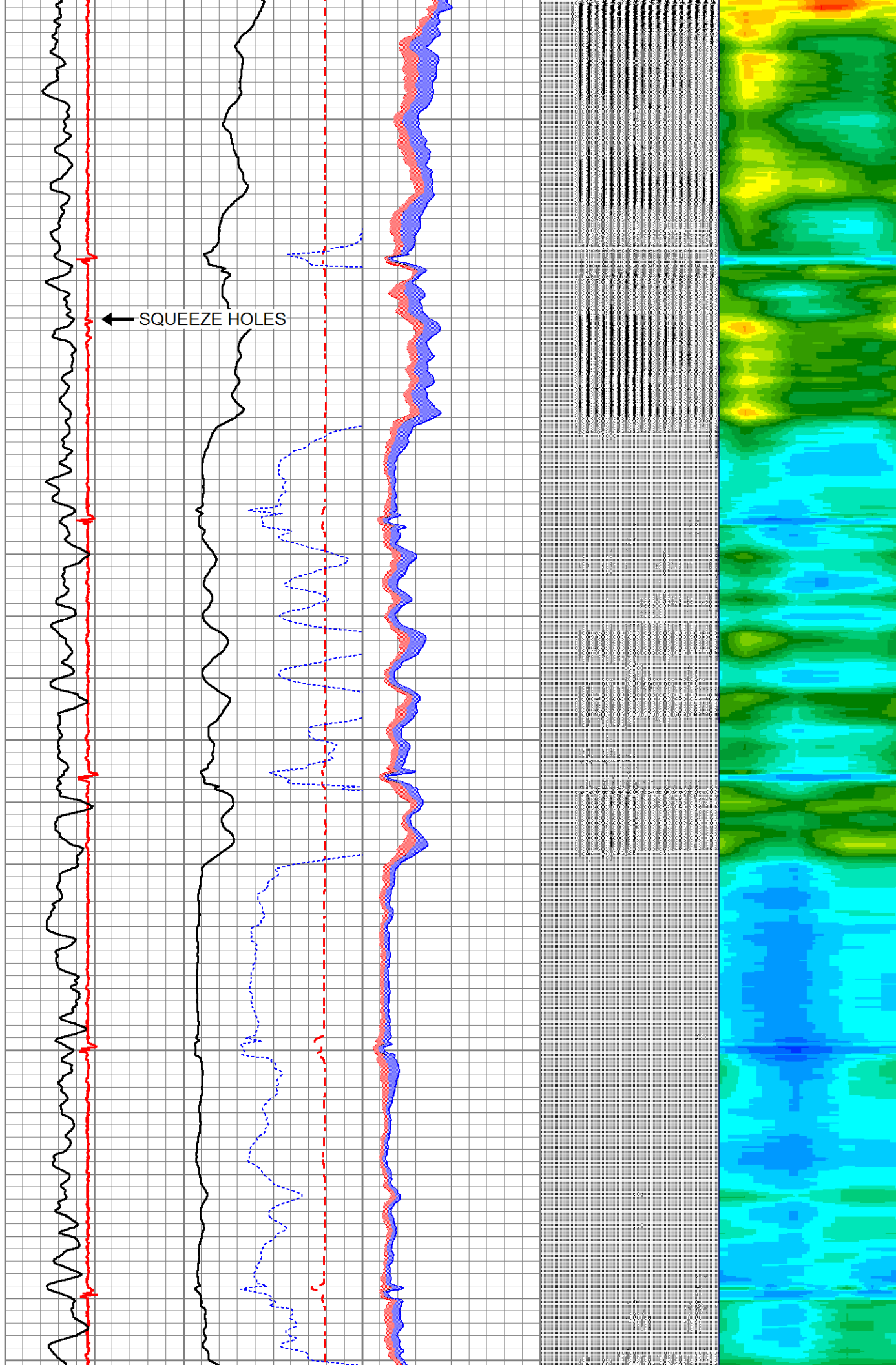
900

950

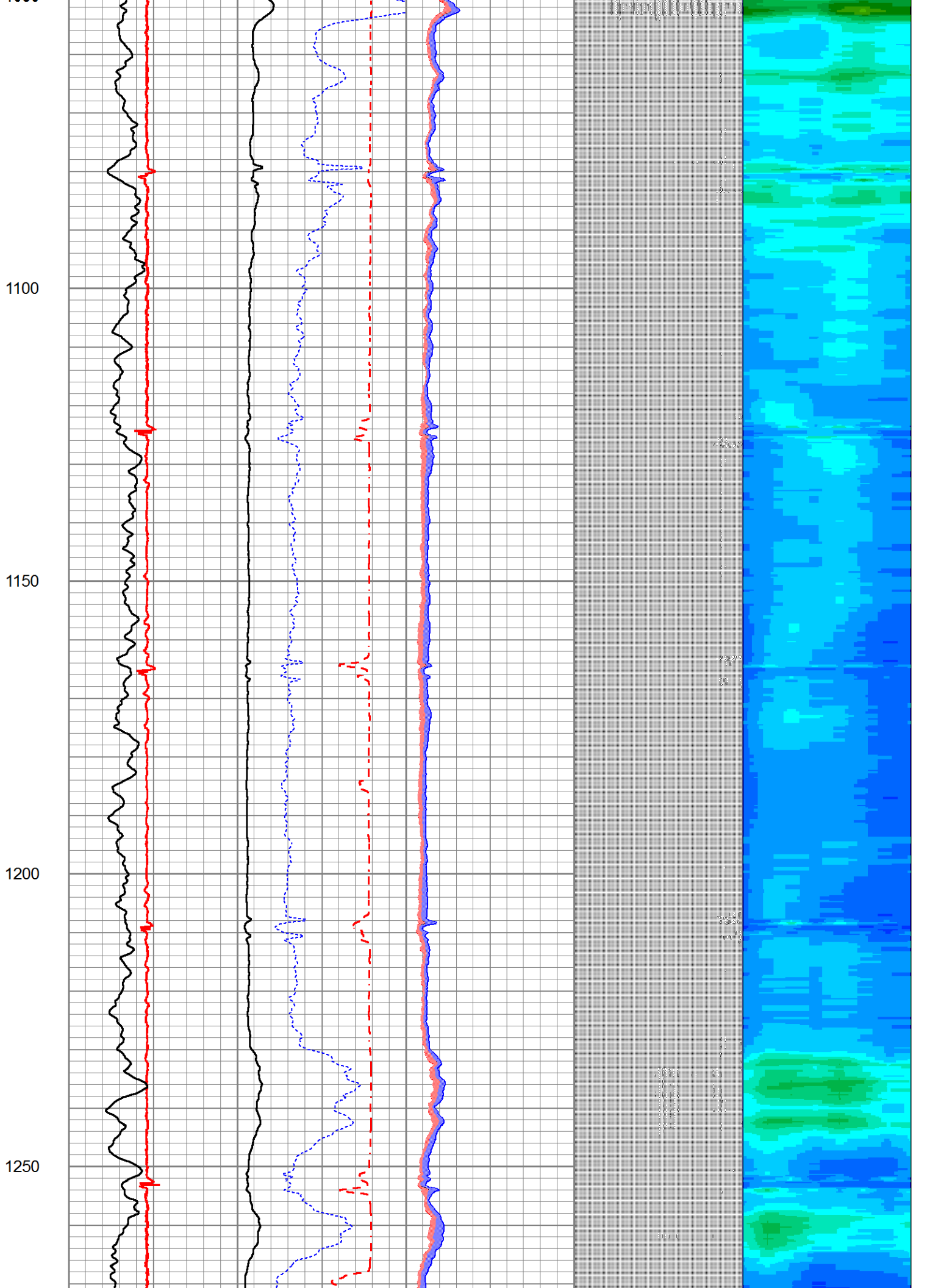
1000

1050

← SQUEEZE HOLES





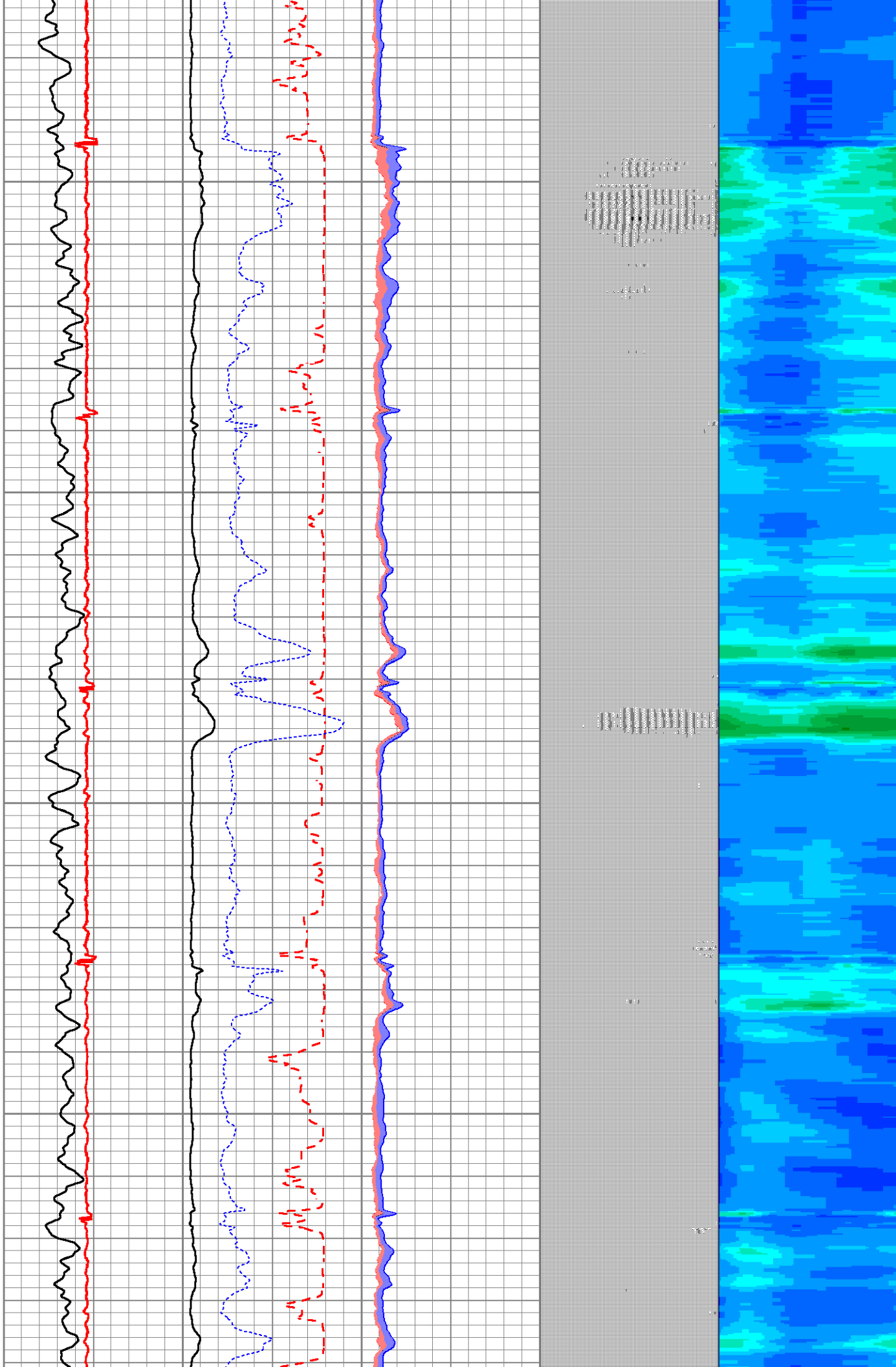


1300

1350

1400

1450





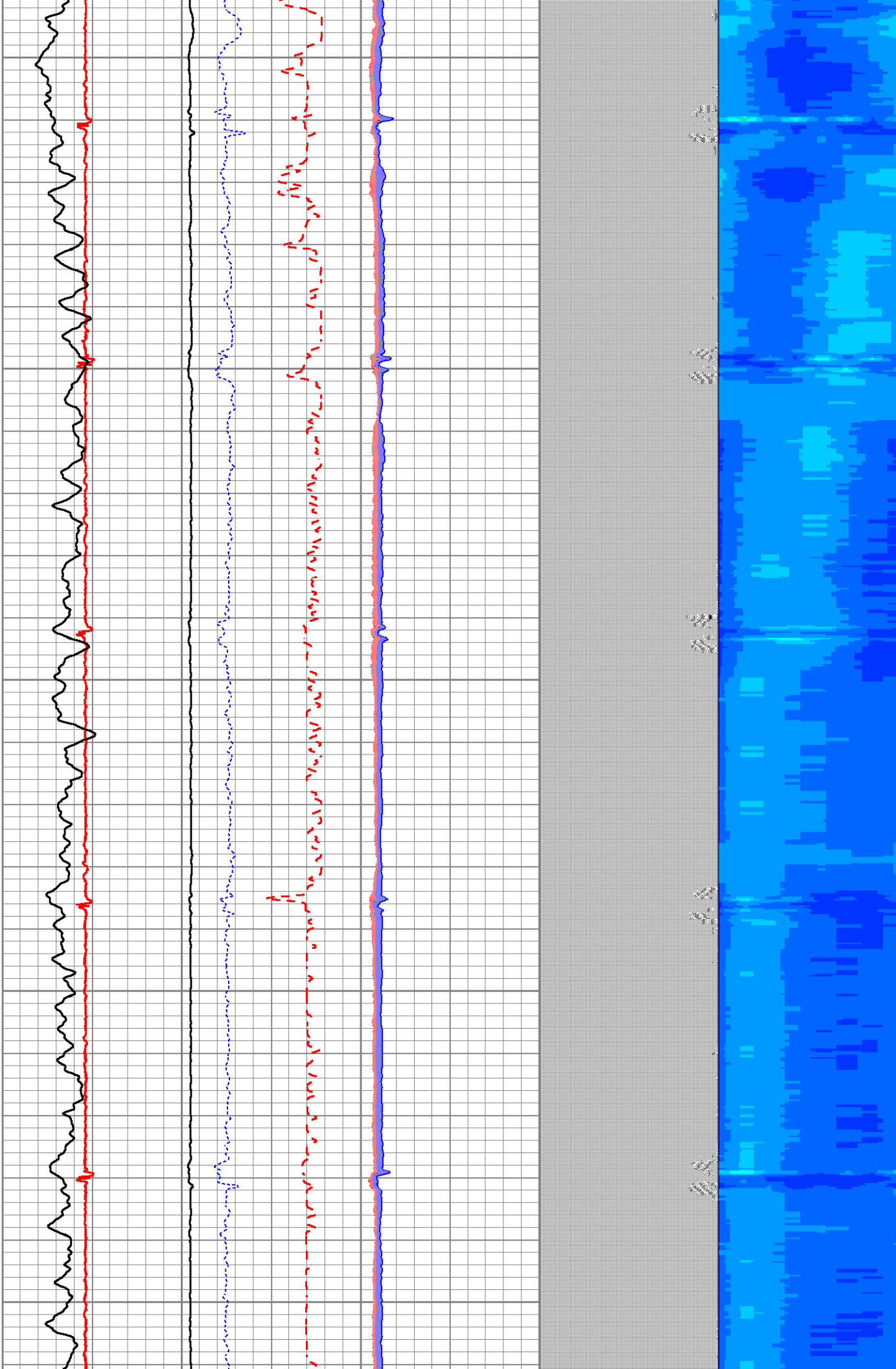
1500

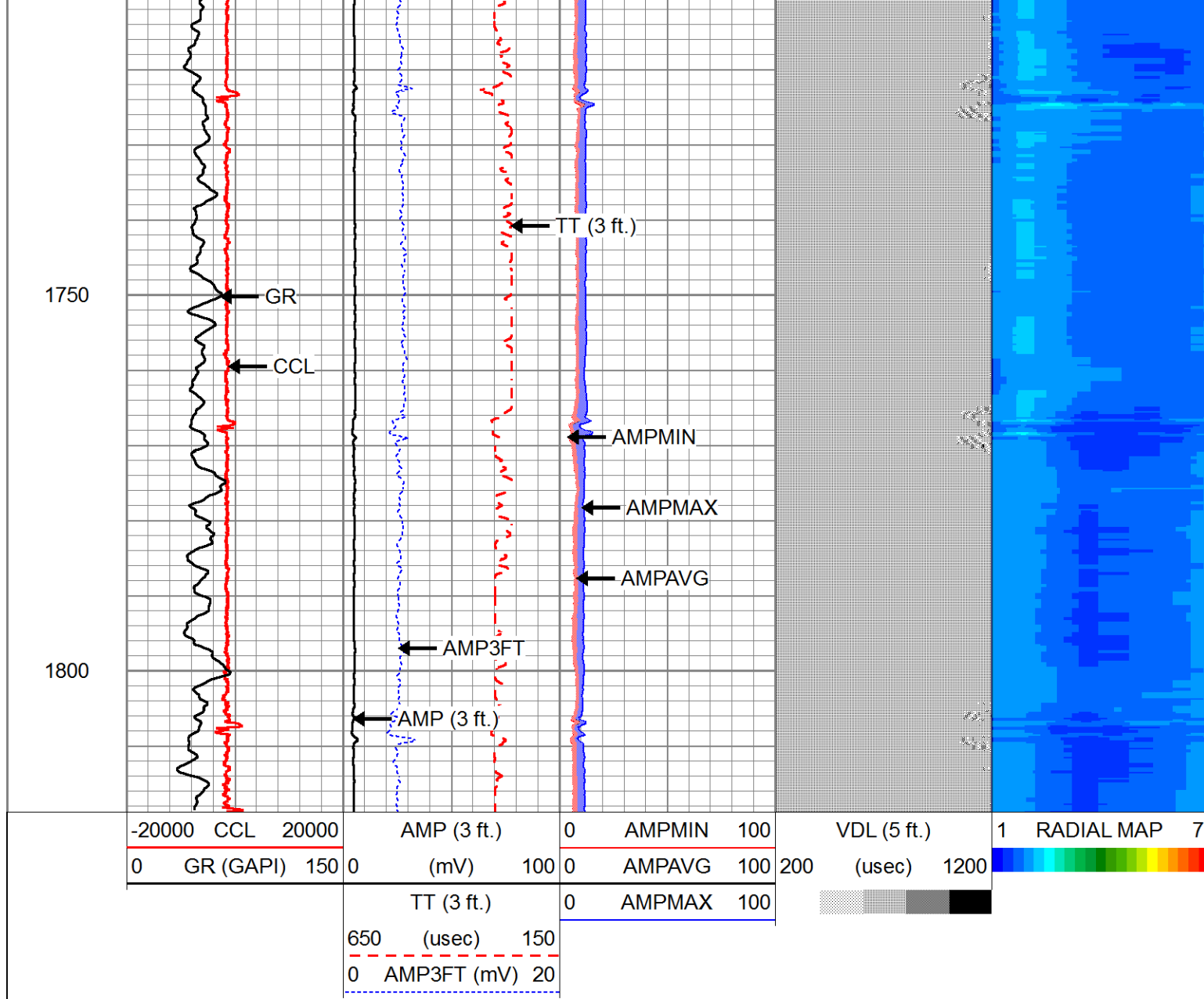
1550

1600

1650

1700





## Log Variables

Database: C:\ProgramData\Warrior\Data\shelton g25-75hn.db  
Dataset: field/well/rbl/pass2.1/\_vars\_

### Top - Bottom

BHTEMP_Src TEMP	BOREID in 7.875	BOTTEMP degF 0	CASEOD in 7	CASETHCK in 0	CASEWGHT lb/ft 26	MAXAMPL mV 62.2	MINAMPL mV 1
MINATTN db/ft 0.8	PERFS 0	PPT usec 0	SRFTEMP degF 0	TDEPTH ft 1830			

### Variable Description

BHTEMP\_Src : BHTEMP Input Source Selector  
BOREID : Borehole I.D.  
BOTTEMP : Bottom Hole Temperature  
CASEOD : Casing O.D.  
CASETHCK : Casing Thickness  
CASEWGHT : Casing Weight  
MAXAMPL : Maximum Amplitude

MINAMPL : Minimum Amplitude  
MINATTN : Minimum Attenuation  
PERFS : Perforation Flag  
PPT : Predicted Pipe Time  
SRFTEMP : Surface Temperature  
TDEPTH : Total Depth

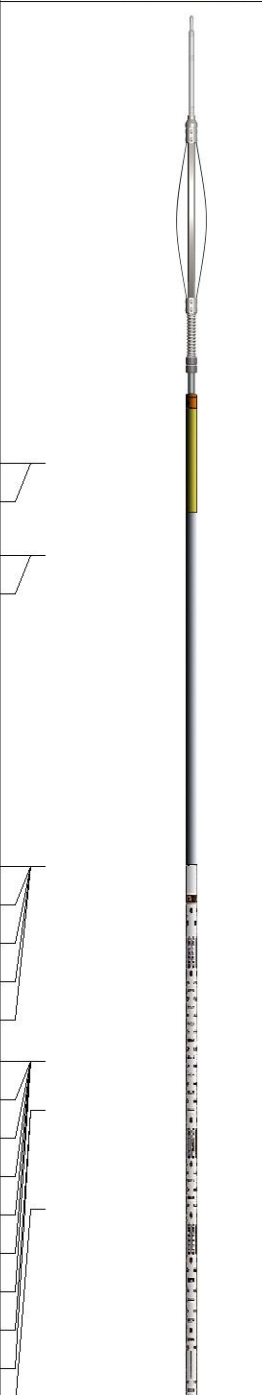
Database File		shelton g25-75hn.db				
Dataset Pathname		rbl/pass2.1				
Dataset Creation		Tue May 16 11:02:50 2023				
Segmented Cement Bond Log Calibration Report						
Serial Number:		HSR20-0000				
Tool Model:		DSS_HSR_20_SND				
Calibration Casing Diameter:		0.000			in	
Calibration Depth:		0.000			ft	
Master Calibration, performed (Derived):						
	Raw (v)		Calibrated (mv)		Results	
	Zero	Cal	Zero	Cal	Gain	Offset
3'	-0.006	0.580	1.000	62.200	104.347	1.657
CAL	0.000	1.000				
5'	-0.004	0.767	1.000	62.200	79.407	1.319
SUM						
S1	-0.008	1.267	1.000	62.200	48.003	1.387
S2						
S3	-0.007	1.285	1.000	62.200	47.379	1.324
S4	-0.006	1.272	1.000	62.200	47.880	1.306
S5	-0.006	1.251	1.000	62.200	48.694	1.306
S6	-0.009	1.379	1.000	62.200	44.098	1.379
S7	-0.006	1.466	1.000	62.200	41.561	1.260
S8	-0.007	1.214	1.000	62.200	50.141	1.329
Internal Reference Calibration, performed Sat Dec 14 12:18:31 2013:						
	Raw (v)		Calibrated (v)		Results	
	Zero	Cal	Zero	Cal	Gain	Offset
CAL	0.000	1.000	1.000	1.000	1.000	0.000
Air Zero Calibration, performed (Not Performed):						
	Raw (v)		Calibrated (v)		Results	
	Zero		Zero			Offset
3'	0.000		1.000			0.000
5'	0.000		1.000			0.000
SUM						
S1	0.000		1.000			0.000
S2						
S3	0.000		1.000			0.000
S4	0.000		1.000			0.000
S5	0.000		1.000			0.000
S6	0.000		1.000			0.000
S7	0.000		1.000			0.000
S8	0.000		0.000			0.000
Temperature Calibration Report						
Serial Number:		HSR20-0000				
Tool Model:		DSS_HSR_20_SND				
Performed:		Sat Dec 14 11:49:30 2013				
	Reference	Reading				




Low Reference: 0.00 degF 0.00  
 High Reference: 1.00 degF 1.00  
 Gain: 0.02  
 Offset: 32.00  
 Delta Spacing 1

### Gamma Ray Calibration Report

Serial Number: HSR20-0000  
 Tool Model: DSS\_HSR\_20\_ELE  
 Performed: Tue Sep 24 15:54:40 2013  
 Calibrator Value: 1.0 GAPI  
 Background Reading: 0.0  
 Calibrator Reading: 1.0  
 Sensitivity: 1.0000 GAPI/

Sensor	Offset (ft)	Schematic	Description	Length (ft)	O.D. (in)	Weight (lb)
			Cable_Head-1_7/16 Titan 1 7/16" Cable Head	1.02	1.44	3.31
			CENT-BC275-0000 Probe 2.75" Bowspring Centralizer	2.83	2.75	24.00
CCL	0.00					
TCF	0.00					
GRHV	0.94					
GR	0.94		DSS_HSR_ELE-DSS_HSR_20_ELE (HSR4.81000) DSS 2 3/4" HSR Bond tool - Electronics Module	2.75	2.75	61.00
ROTV	4.10					
THV	4.10					
INTEMP	4.10					
PNEG	4.10					
PPOS	4.10					
WVFS8	6.09					
WVFS7	6.09					
WVFS6	6.09					
WVFS5	6.09					
WVFS4	6.09					
WVFS3	6.09		DSS_HSR_SND-DSS_HSR_20_SND (HSF7.70000) DSS 2 3/4" HSR Bond tool - Sonde Module	2.75	2.75	86.00
WVFS1	6.09					
WVFCAL	6.59					
WVF3FT	6.59					

WVF5FT	7.59					
TEMP WVFSYNC	11.67 11.80					
						
			CENT-BC275-0000 Probe 2.75" Bowspring Centralizer	2.83	2.75	24.00
Dataset: shelton g25-75hn.db: field/well/rbl/pass2.1 Total length: 19.19 ft Total weight: 198.31 lb O.D.: 2.75 in						

	Company	CHEVRON	
	Well	SHELTON G25-75HN	
	Field	WATTENBERG	
	County	WELD	
	State	COLORADO	Country USA