



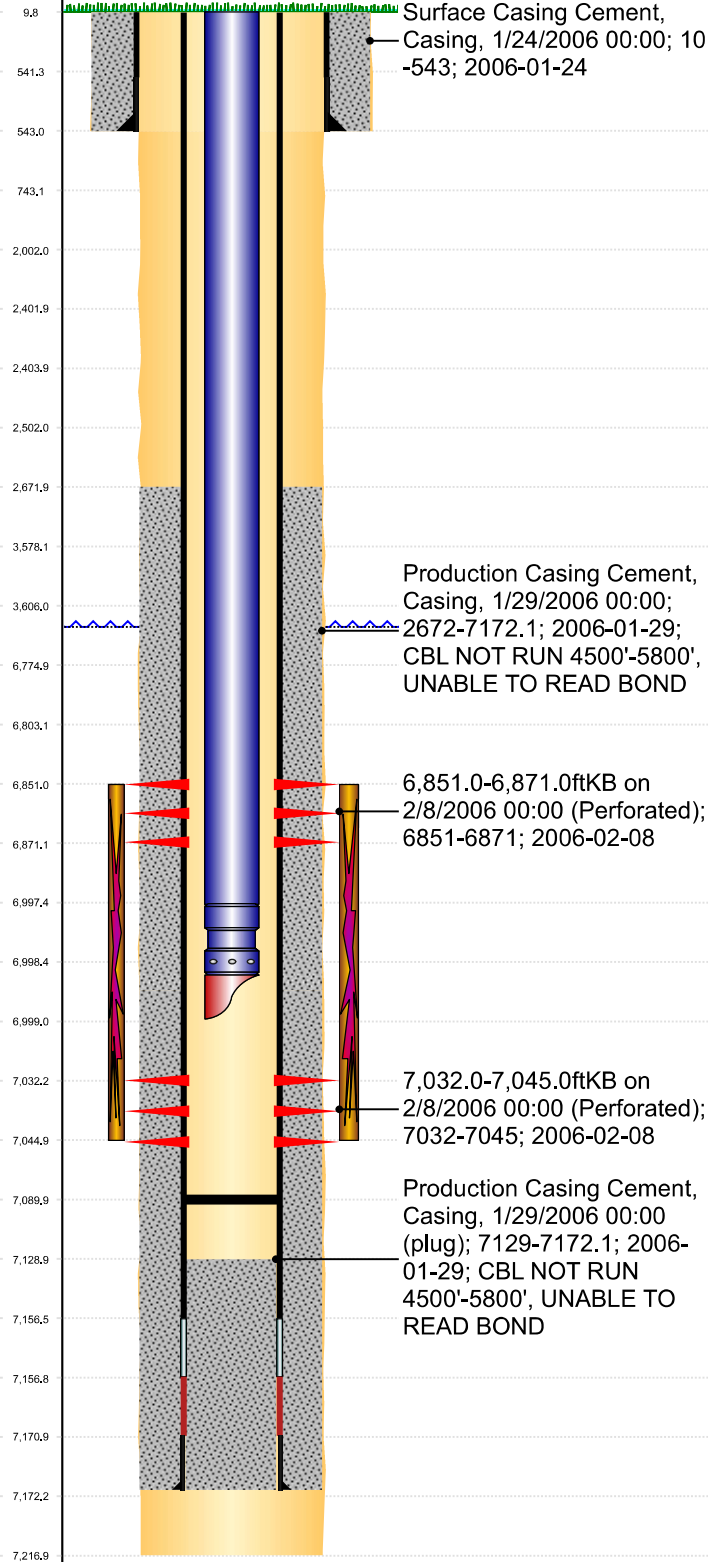
P&A Wellbore For State

Well Name: MILE HIGH SHEEP 08-32

Original Hole [Land]

MD
(ftK
B)

Vertical schematic (actual)



Well Header

Surface UWI 0512323451	Business Unit Rockies	Gov Auth Dist	Prod Tree Loc Land
Orig. KB to Gnd (ft) 10.00	Original Spud Date 1/23/2006	Abandon Date	Well Sub-Status PR
Comment			

Surface Location (Congressional)

Qtr 3 NW	Qtr 4 SW	Section 8	Twnshp 6	Twnsh... N	Range 64	Rng E/... W	Latitude (°) 40.49822	Longitude (°) -104.58196
-------------	-------------	--------------	-------------	---------------	-------------	----------------	--------------------------	-----------------------------

Wellbore Sections

Section Des	Hole Size (in)	Top Depth (ftKB)	Btm Depth (ftKB)
SURFACE	12 1/4	10.0	543.0
PRODUCTION	7 7/8	543.0	7,217.0

Casing Strings

Csg Des	Run Date	OD (in)	Wt/Len (lb/ft)	Grade	Top Depth (MD) (ftKB)	Set Depth (MD) (ftKB)
Surface	1/24/2006	8 5/8	24.00		10	543
Production Casing	1/29/2006	4 1/2	11.60		10	7172.1

Cement

Des	Start Date	Top (ftKB)	Btm (ftKB)
Surface Casing Cement	1/24/2006	10.0	543.0
Production Casing Cement	1/29/2006	2,672.0	7,172.1

Zone Statuses

Zone Name	Status Date	Status	Fluid Type	Job	Prod Method
CODELL	12/16/2015	PR		DRILLING/COMPLETION - ORIGINAL, 1/23/2006...	Flowing
CODELL	3/29/2017	PR			
NIOBRARA	2/17/2006	PR			
NIOBRARA	6/2/2010	PR	Water		

Perforation Data

Linked Zone	Explosive Type	Entered Shot Total	Top (ftKB)	Btm (ftKB)	Date
NIOBRARA, Original Hole	B	40	6,851.0	6,871.0	2/8/2006
CODELL, Original Hole		52	7,032.0	7,045.0	2/8/2006

Stim/Frac Stage

Zone	Start Date	Top (ftKB)	Btm (ftKB)
NIOBRARA, Original Hole	2/8/2006	6,851.0	6,871.0
NIOBRARA-CODELL, Original Hole	2/10/2006	6,851.0	7,045.0

Other In Hole

Run Date	Des	Make	OD (in)	Top (ftKB)	Btm (ftKB)

Logs

Date	Type	Depth Top (MD) (ftKB)	Btm (ftKB)
1/29/2006	COMPENSATED DENSITY	3,000	7,162.0
1/29/2006	INDUCTION	533	7,182.0
2/7/2006	CBL/CCL/GR	2,500	7,129.0

Wellbore Plug Back Total Depths

Date	Type	Com	PBTD (ftKB)
2/7/2006	FILL	DEPTH LOGGER ON CBL	7,129
5/22/2006	FILL	CLEAN OUT TO 7090'	7,090