



FIGURES

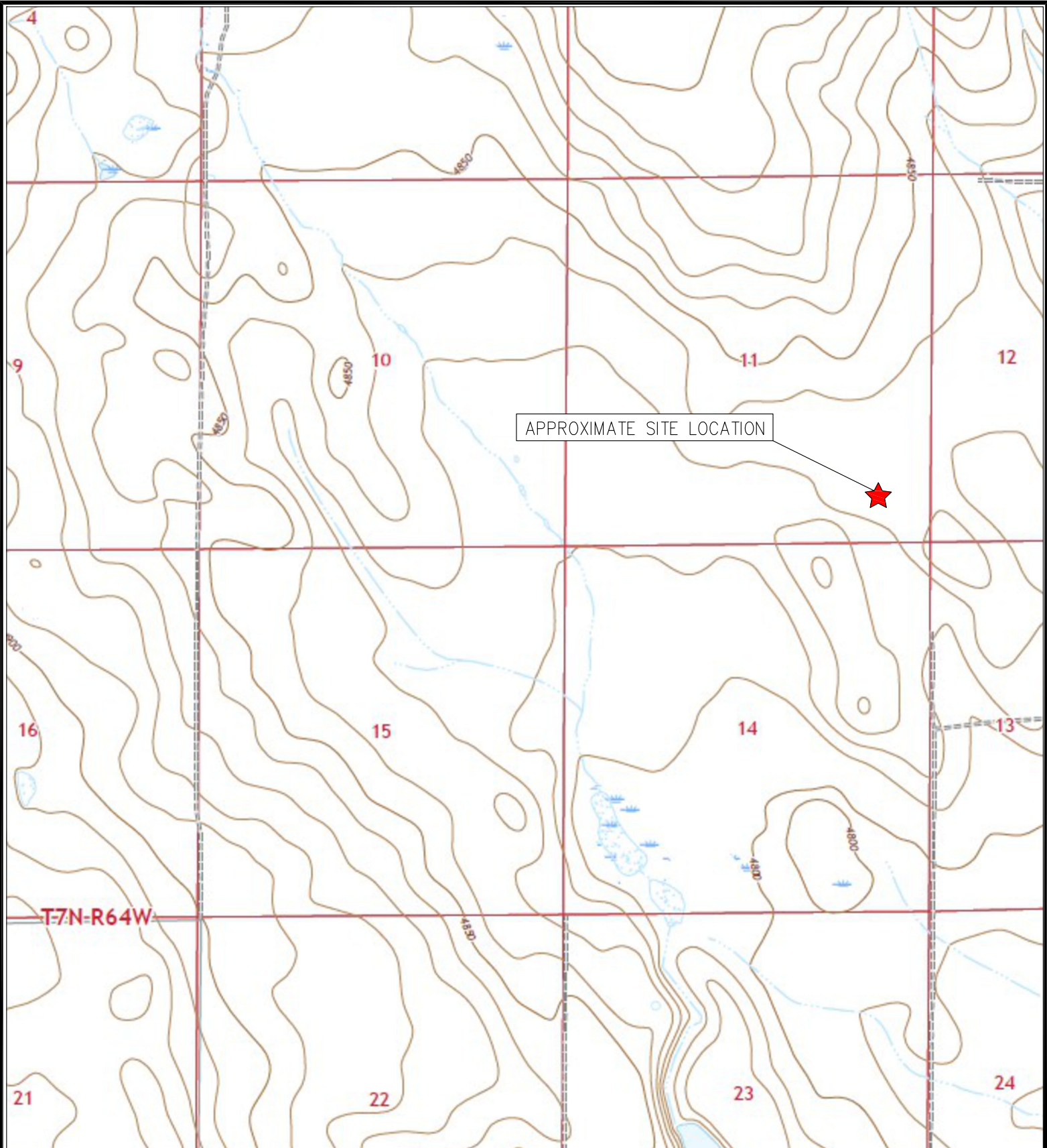
Figure 1: Topographic Site Location Map

Figure 2: Aerial Site Location Map

Figure 3: Monitoring Well Soil Analytical Map

Figure 4: Monitoring Well Polycyclic Aromatic Hydrocarbons Map

Figure 5: Monitoring Well Metals in Soil Map



TOPOGRAPHIC SITE LOCATION MAP
 SHABLE USX AB #11-16P
 HISTORICAL RELEASE
 40.582380 / -104.510025
 SE¼ SE¼ SEC.11 T7N R64W 6PM
 WELD COUNTY, COLORADO
 API # 05-123-31051
 REMEDIATION # 30818




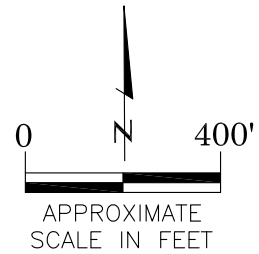
EAGLE
 ENVIRONMENTAL
 CONSULTING, LLC

8000 W 44th Ave, Wheat Ridge, CO 80033
 Ph: 303-433-0479 • F: 303-325-5449



LEGEND

 FORMER SHABLE USX AB #11-16P WELLHEAD (PLUGGED AND ABANDONED)



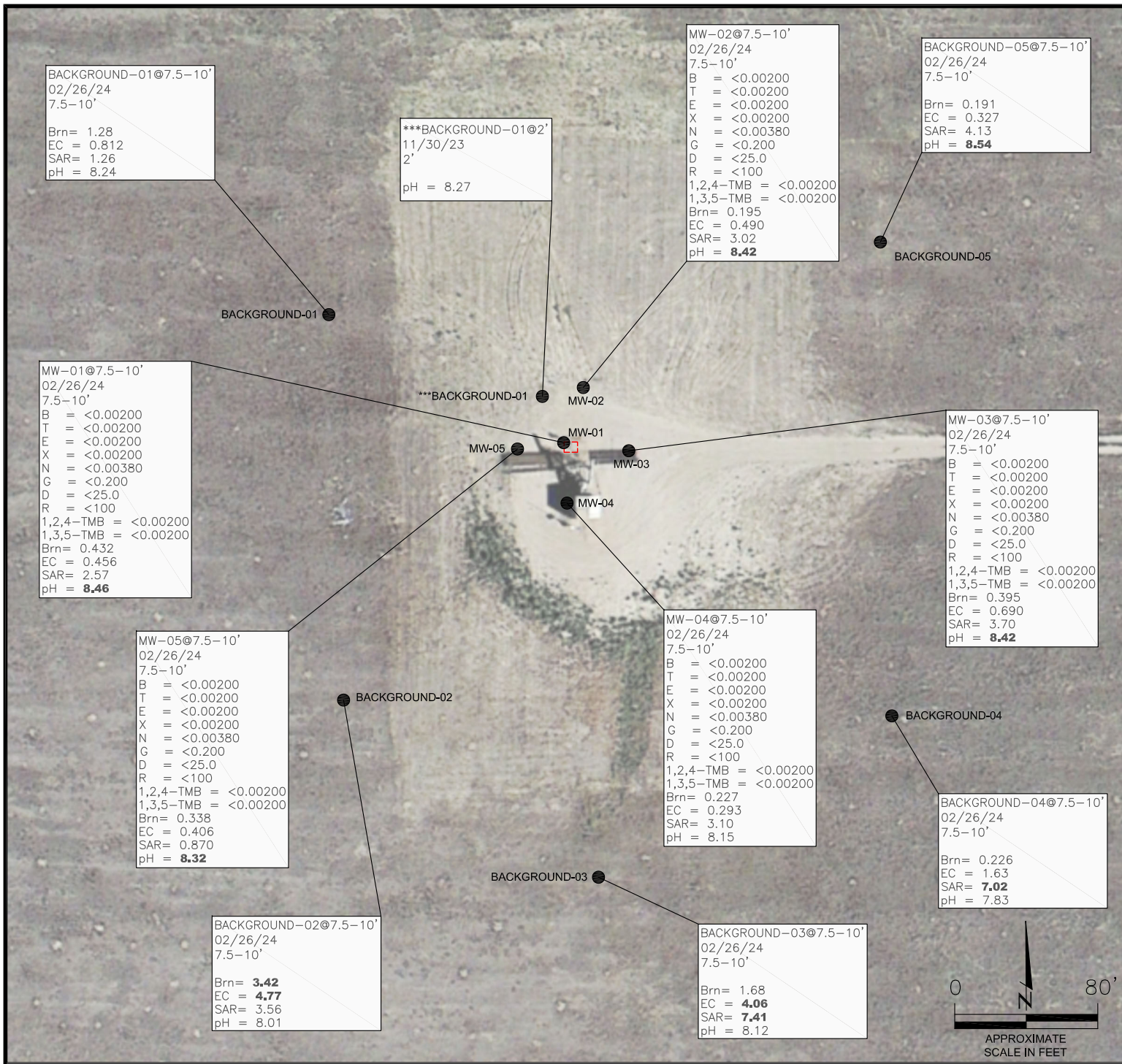
AERIAL SITE LOCATION MAP
SHABLE USX AB #11-16P
HISTORICAL RELEASE
40.582380 / -104.510025
SE $\frac{1}{4}$ SE $\frac{1}{4}$ SEC.11 T7N R64W 6PM
WELD COUNTY, COLORADO
API # 05-123-31051
REMEDIAION # 30818

FIGURE NO.
2

DRAWN BY:
EL



EAGLE
ENVIRONMENTAL
CONSULTING, LLC
8000 W 44th Ave, Wheat Ridge, CO 80033
Ph: 303-433-0479 • F: 303-325-5449



LEGEND

----- INITIAL ASSESSMENT BOUNDARIES

● SS-02 APPROXIMATE LOCATION OF SOIL SAMPLES SUBMITTED FOR LABORATORY ANALYSIS

PARAMETERS

SAMPLE LOCATION
DATE
DEPTH (FEET)
B = BENZENE (mg/kg)
T = TOLUENE (mg/kg)
E = ETHYLBENZENE (mg/kg)
X = TOTAL XYLENES (mg/kg)
N = NAPHTHALENE (mg/kg)
G = TPH-GRO (mg/kg)
D = TPH-DRO (mg/kg)
R = TPH-RRO (mg/kg)
1,2,4-TMB = 1,2,4 TRIMETHYLBENZENE (mg/kg)
1,3,5-TMB = 1,3,5 TRIMETHYLBENZENE (mg/kg)
Brn = BORON (mg/L)
EC = SPECIFIC CONDUCTANCE (mmhos/cm)
SAR = SODIUM ADSORPTION RATIO
pH = pH (PH UNITS)

mg/kg = MILLIGRAMS PER KILOGRAM
mg/L = MILLIGRAMS PER LITER
mmhos/cm = MILLIMHOS PER CENTIMETER

TPH-GRO = TOTAL PETROLEUM HYDROCARBONS - GASOLINE RANGE ORGANICS
TPH-DRO = TOTAL PETROLEUM HYDROCARBONS - DIESEL RANGE ORGANICS
TPH-RRO = TOTAL PETROLEUM HYDROCARBONS - RESIDUAL RANGE ORGANICS

NOTES:
***BACKGROUND-01 COLLECTED DURING INITIAL WELLHEAD DECOMMISSIONING.

VALUES PRESENTED WITH A LESS THAN SYMBOL (<) DID NOT CONTAIN CONCENTRATIONS AT OR ABOVE LABORATORY DETECTION LIMITS.

VALUES PRESENTED IN **BOLD** EXCEED ECMC TABLE 915-1 REGULATORY LIMITS.

ECMC = ENERGY & CARBON MANAGEMENT COMMISSION

MONITORING WELL SOIL ANALYTICAL MAP
SHALE USX AB #11-16P
HISTORICAL RELEASE
40.582380 / -104.510025
SE¼ SE¼ SEC.11 T7N R64W 6PM
WELD COUNTY, COLORADO
API # 05-123-31051
REMEDATION # 30818

FIGURE NO.
3

DRAWN BY:
GK

EAGLE ENVIRONMENTAL CONSULTING, LLC
8000 W 44th Ave, Wheat Ridge, CO 80033
Ph: 303-433-0479 • F: 303-325-5449

MW-01@7.5-10'
02/26/24
7.5-10'

1-Methylnaphthalene = <0.002
2-Methylnaphthalene = <0.002
Acenaphthene = <0.020
Anthracene = <0.020
Benzo(a)anthracene = <0.005
Benzo(a)pyrene = <0.020
Benzo(b)fluoranthene = <0.020
Benzo(k)fluoranthene = <0.020
Chrysene = <0.020
Dibenzo(a,h)anthracene = <0.020
Fluoranthene = <0.020
Fluorene = <0.020
Indeno(1,2,3-CD)pyrene = <0.020
Pyrene = <0.020

MW-02@7.5-10'
02/26/24
7.5-10'

1-Methylnaphthalene = <0.002
2-Methylnaphthalene = <0.002
Acenaphthene = <0.020
Anthracene = <0.020
Benzo(a)anthracene = <0.005
Benzo(a)pyrene = <0.020
Benzo(b)fluoranthene = <0.020
Benzo(k)fluoranthene = <0.020
Chrysene = <0.020
Dibenzo(a,h)anthracene = <0.020
Fluoranthene = <0.020
Fluorene = <0.020
Indeno(1,2,3-CD)pyrene = <0.020
Pyrene = <0.020

MW-05
MW-01
MW-03
MW-04

MW-03@7.5-10'
02/26/24
7.5-10'

1-Methylnaphthalene = <0.002
2-Methylnaphthalene = <0.002
Acenaphthene = <0.020
Anthracene = <0.020
Benzo(a)anthracene = <0.005
Benzo(a)pyrene = <0.020
Benzo(b)fluoranthene = <0.020
Benzo(k)fluoranthene = <0.020
Chrysene = <0.020
Dibenzo(a,h)anthracene = <0.020
Fluoranthene = <0.020
Fluorene = <0.020
Indeno(1,2,3-CD)pyrene = <0.020
Pyrene = <0.020

MW-05@7.5-10'
02/26/24
7.5-10'

1-Methylnaphthalene = <0.002
2-Methylnaphthalene = <0.002
Acenaphthene = <0.020
Anthracene = <0.020
Benzo(a)anthracene = <0.005
Benzo(a)pyrene = <0.020
Benzo(b)fluoranthene = <0.020
Benzo(k)fluoranthene = <0.020
Chrysene = <0.020
Dibenzo(a,h)anthracene = <0.020
Fluoranthene = <0.020
Fluorene = <0.020
Indeno(1,2,3-CD)pyrene = <0.020
Pyrene = <0.020

MW-04@7.5-10'
02/26/24
7.5-10'

1-Methylnaphthalene = <0.002
2-Methylnaphthalene = <0.002
Acenaphthene = <0.020
Anthracene = <0.020
Benzo(a)anthracene = <0.005
Benzo(a)pyrene = <0.020
Benzo(b)fluoranthene = <0.020
Benzo(k)fluoranthene = <0.020
Chrysene = <0.020
Dibenzo(a,h)anthracene = <0.020
Fluoranthene = <0.020
Fluorene = <0.020
Indeno(1,2,3-CD)pyrene = <0.020
Pyrene = <0.020

LEGEND

- INITIAL ASSESSMENT BOUNDARIES
- APPROXIMATE LOCATION OF SOIL SAMPLES SUBMITTED FOR LABORATORY ANALYSIS

PARAMETERS

SAMPLE LOCATION
DATE SAMPLE COLLECTED
APPROXIMATE DEPTH
POLYCYCLIC AROMATIC HYDROCARBONS (PAHs) (mg/kg)

mg/kg = MILLIGRAMS PER KILOGRAM

NOTES:
VALUES PRESENTED WITH A LESS THAN SYMBOL (<) DID NOT CONTAIN CONCENTRATIONS AT OR ABOVE LABORATORY DETECTION LIMITS.

VALUES PRESENTED IN **BOLD** EXCEED ECMC TABLE 915-1 REGULATORY LIMITS.

ECMC = ENERGY & CARBON MANAGEMENT COMMISSION

MONITORING WELL POLYCYCLIC AROMATIC HYDROCARBONS MAP

SHABLE USX AB #11-16P
HISTORICAL RELEASE
40.582380 / -104.510025
SE¼ SE¼ SEC.11 T7N R64W 6PM
WELD COUNTY, COLORADO
API # 05-123-31051
REMEDATION # 30818

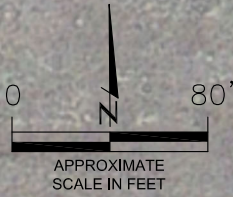
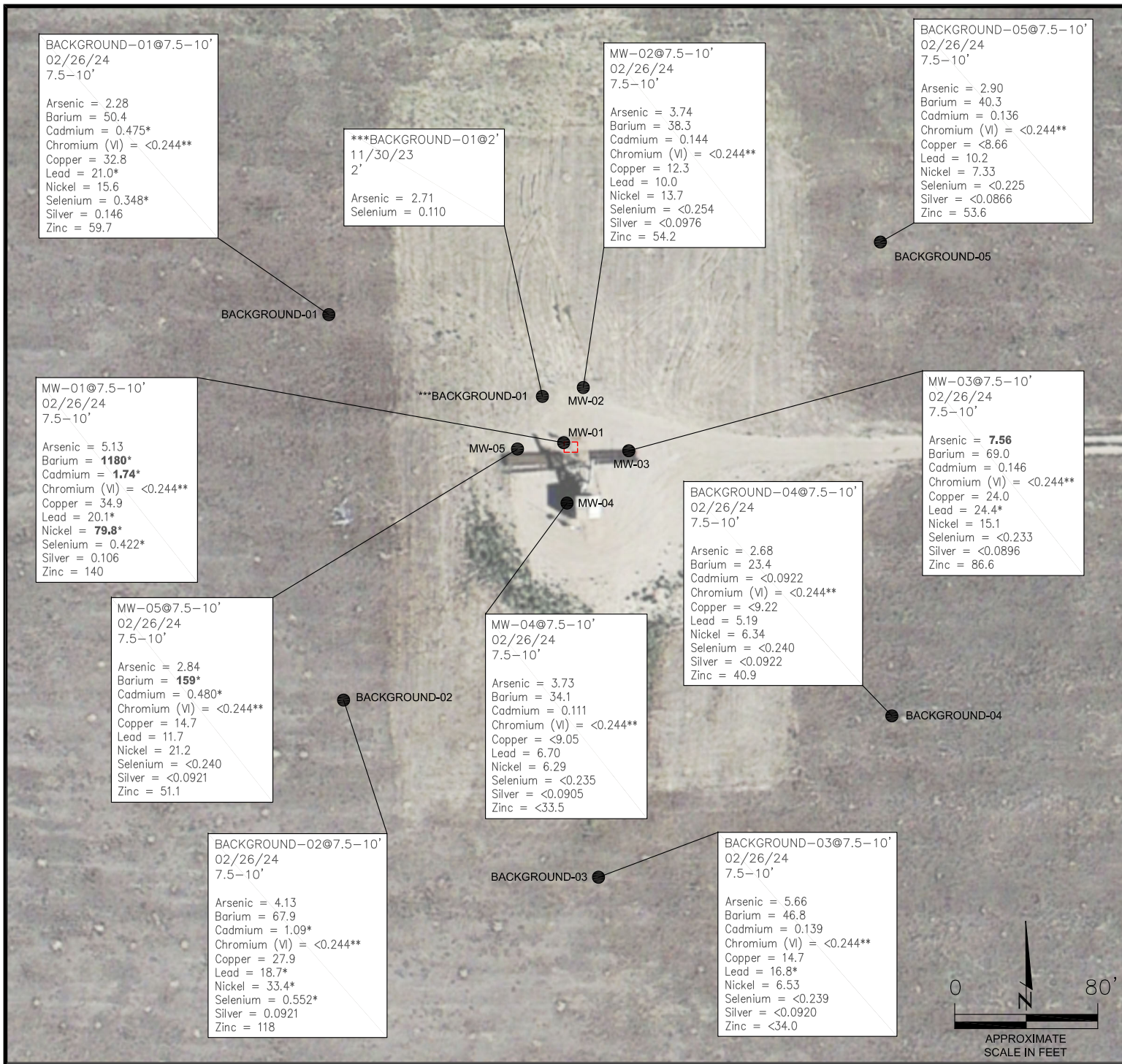


FIGURE NO.
4

DRAWN BY:
GK

EAGLE
ENVIRONMENTAL
CONSULTING, LLC
8000 W 44th Ave, Wheat Ridge, CO 80033
Ph: 303-433-0479 • F: 303-325-5449



BACKGROUND-01@7.5-10'
02/26/24
7.5-10'

Arsenic = 2.28
Barium = 50.4
Cadmium = 0.475*
Chromium (VI) = <0.244**
Copper = 32.8
Lead = 21.0*
Nickel = 15.6
Selenium = 0.348*
Silver = 0.146
Zinc = 59.7

***BACKGROUND-01@2'
11/30/23
2'

Arsenic = 2.71
Selenium = 0.110

MW-02@7.5-10'
02/26/24
7.5-10'

Arsenic = 3.74
Barium = 38.3
Cadmium = 0.144
Chromium (VI) = <0.244**
Copper = 12.3
Lead = 10.0
Nickel = 13.7
Selenium = <0.254
Silver = <0.0976
Zinc = 54.2

BACKGROUND-05@7.5-10'
02/26/24
7.5-10'

Arsenic = 2.90
Barium = 40.3
Cadmium = 0.136
Chromium (VI) = <0.244**
Copper = <8.66
Lead = 10.2
Nickel = 7.33
Selenium = <0.225
Silver = <0.0866
Zinc = 53.6

MW-01@7.5-10'
02/26/24
7.5-10'

Arsenic = 5.13
Barium = **1180***
Cadmium = **1.74***
Chromium (VI) = <0.244**
Copper = 34.9
Lead = 20.1*
Nickel = **79.8***
Selenium = 0.422*
Silver = 0.106
Zinc = 140

MW-03@7.5-10'
02/26/24
7.5-10'

Arsenic = **7.56**
Barium = 69.0
Cadmium = 0.146
Chromium (VI) = <0.244**
Copper = 24.0
Lead = 24.4*
Nickel = 15.1
Selenium = <0.233
Silver = <0.0896
Zinc = 86.6

BACKGROUND-04@7.5-10'
02/26/24
7.5-10'

Arsenic = 2.68
Barium = 23.4
Cadmium = <0.0922
Chromium (VI) = <0.244**
Copper = <9.22
Lead = 5.19
Nickel = 6.34
Selenium = <0.240
Silver = <0.0922
Zinc = 40.9

MW-05@7.5-10'
02/26/24
7.5-10'

Arsenic = 2.84
Barium = **159***
Cadmium = 0.480*
Chromium (VI) = <0.244**
Copper = 14.7
Lead = 11.7
Nickel = 21.2
Selenium = <0.240
Silver = <0.0921
Zinc = 51.1

MW-04@7.5-10'
02/26/24
7.5-10'

Arsenic = 3.73
Barium = 34.1
Cadmium = 0.111
Chromium (VI) = <0.244**
Copper = <9.05
Lead = 6.70
Nickel = 6.29
Selenium = <0.235
Silver = <0.0905
Zinc = <33.5

BACKGROUND-02@7.5-10'
02/26/24
7.5-10'

Arsenic = 4.13
Barium = 67.9
Cadmium = 1.09*
Chromium (VI) = <0.244**
Copper = 27.9
Lead = 18.7*
Nickel = 33.4*
Selenium = 0.552*
Silver = 0.0921
Zinc = 118

BACKGROUND-03@7.5-10'
02/26/24
7.5-10'

Arsenic = 5.66
Barium = 46.8
Cadmium = 0.139
Chromium (VI) = <0.244**
Copper = 14.7
Lead = 16.8*
Nickel = 6.53
Selenium = <0.239
Silver = <0.0920
Zinc = <34.0

LEGEND

- INITIAL ASSESSMENT BOUNDARIES
- APPROXIMATE LOCATION OF SOIL SAMPLES
- SS-02 SUBMITTED FOR LABORATORY ANALYSIS

PARAMETERS

SAMPLE LOCATION
DATE SAMPLE COLLECTED
APPROXIMATE DEPTH
Arsenic = (mg/kg)
Barium = (mg/kg)
Cadmium = (mg/kg)
Chromium (VI) = (mg/kg)
Copper = (mg/kg)
Lead = (mg/kg)
Nickel = (mg/kg)
Selenium = (mg/kg)
Silver = (mg/kg)
Zinc = (mg/kg)

mg/kg = MILLIGRAMS PER KILOGRAM

NOTES:
VALUES PRESENTED WITH A LESS THAN SYMBOL (<) DID NOT CONTAIN CONCENTRATIONS AT/OR ABOVE LABORATORY REPORTING LIMITS AND/OR MINIMUM DETECTION LIMITS.

ELEVATED METALS ARE NATURALLY OCCURRING IN COLORADO. LOCAL CLEAN-UP LEVELS ARE 1.25*BACKGROUND HIGH CONCENTRATIONS WHERE APPLICABLE.

VALUES PRESENTED IN **BOLD** EXCEED ECMC TABLE 915-1 REGULATORY LIMITS AND LOCAL CLEAN-UP LEVELS.

*VALUES EXCEED ECMC TABLE 915-1 PROTECTION OF GROUNDWATER SOIL SCREENING LEVELS, ONLY.

**ACHIEVABLE PRACTICAL QUANTITATIVE LIMITS FOR HEXAVALENT CHROMIUM (Cr VI) IN SOILS IS IN THE RANGE OF 0.1 TO 1 mg/kg.

***BACKGROUND-01 COLLECTED DURING INITIAL WELLHEAD DECOMMISSIONING.

ECMC = ENERGY & CARBON MANAGEMENT COMMISSION

MONITORING WELL METALS IN SOIL MAP

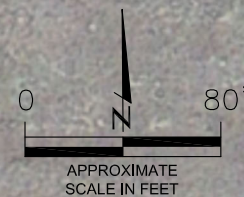
SHALE USX AB #11-16P
HISTORICAL RELEASE
40.582380 / -104.510025
SE ¼ SE ¼ SEC.11 T7N R64W 6PM
WELD COUNTY, COLORADO
API # 05-123-31051
REMEDATION # 30818

FIGURE NO.
5

DRAWN BY:
GK



EAGLE
ENVIRONMENTAL
CONSULTING, LLC
8000 W 44th Ave, Wheat Ridge, CO 80033
Ph: 303-433-0479 • F: 303-325-5449





TABLES

Table 1: Field Data Summary

Table 2: Summary of Volatile Organic Soil Chemistry Data

Table 3: Summary of PAH Soil Chemistry Data

Table 4: Summary of Soil Suitability for Reclamation

Table 5: Summary of Metals in Soil Chemistry Data

TABLE 1
FIELD DATA SUMMARY TABLE
NOBLE ENERGY 100322
SHABLE USX AB #11-16P, WELD COUNTY, COLORADO
REM # 30818

Sample ID	Sample Date	Depth (ft)	GPS Data		VOC Concentration (ppm)
			Latitude/Longitude		
WH-SS-01 @ 5'	11/30/2023	5	40.582399	-104.510034	57.0
WH-SS-02 @ 5'	11/30/2023	5	40.582393	-104.510023	2.6
WH-SS-03 @ 5'	11/30/2023	5	40.582384	-104.510035	7.7
WH-SS-04 @ 5'	11/30/2023	5	40.582391	-104.510045	11.8
WH-FS-01 @ 6'	11/30/2023	6	40.582392	-104.510033	104.4
**Background-01 @ 2'	11/30/2023	2	40.582466	-104.510091	0.7
WH-N @ 0.5'	11/30/2023	0.5	40.582408	-104.510033	0.6
WH-E @ 0.5'	11/30/2023	0.5	40.582386	-104.510009	0.7
WH-S @ 0.5'	11/30/2023	0.5	40.582374	-104.510035	1.2
WH-W @ 0.5'	11/30/2023	0.5	40.582387	-104.510070	0.4
MW-01 @ 7.5-10'	2/26/2024	7.5-10	40.582399	-104.510056	1.4
MW-02 @ 7.5-10'	2/26/2024	7.5-10	40.582479	-104.510020	3.5
MW-03 @ 7.5-10'	2/26/2024	7.5-10	40.582388	-104.509924	2.3
MW-04 @ 7.5-10'	2/26/2024	7.5-10	40.582303	-104.510046	4.9
MW-05 @ 7.5-10'	2/26/2024	7.5-10	40.582388	-104.510151	2.1
Background-01 @ 7.5-10'	2/26/2024	7.5-10	40.582593	-104.510530	1.1
Background-02 @ 7.5-10'	2/26/2024	7.5-10	40.582002	-104.510504	1.1
Background-03 @ 7.5-10'	2/26/2024	7.5-10	40.581738	-104.509990	1.8
Background-04 @ 7.5-10'	2/26/2024	7.5-10	40.582060	-104.509421	2.5
Background-05 @ 7.5-10'	2/26/2024	7.5-10	40.582703	-104.509425	0.7

1. Global Positioning System (GPS) data is provided in decimal degrees using North American Datum (NAD) 83 UTMZone 13 North.

2. Volatile organic compound (VOC) concentrations are measured in the field using a photoionization detector (PID).

PDOP = Position Dilution of Precision

ppm = Parts per million

in. = Inches

ft. = Feet

bgs = Below ground surface

**Background-01 @ 2' collected during initial wellhead decommissioning

TABLE 2
SUMMARY OF VOLATILE ORGANIC SOIL CHEMISTRY DATA
NOBLE ENERGY 100322
SHABLE USX AB #11-16P, WELD COUNTY, COLORADO
REM # 30818

Sample ID	Sample Date	Depth (ft)	Benzene (mg/kg)	Toluene (mg/kg)	Ethyl-Benzene (mg/kg)	Xylenes (mg/kg)	1,2,4-Trimethyl-Benzene (mg/kg)	1,3,5-Trimethyl-Benzene (mg/kg)	Naphthalene (mg/kg)	TPH (mg/kg)	TPH GRO (mg/kg)	TPH DRO (mg/kg)	TPH ORO (mg/kg)
ECMC Table 915-1 Limits (Residential SSL)			1.2	490	5.8	58	30	27	2	500	500**		
ECMC Table 915-1 Limits (Protection of Groundwater SSL)			0.0026	0.69	0.78	9.9	0.0081	0.0087	0.0038	500	500**		
WH-SS-01 @ 5'	11/30/2023	5	<0.00200	<0.00200	<0.00200	<0.00200	<0.00200	0.00474	<0.00380	<500	0.290	45.3	109
WH-SS-02 @ 5'	11/30/2023	5	<0.00200	<0.00200	<0.00200	<0.00200	<0.00200	<0.00200	<0.00380	<500	<0.200	<25.0	<100
WH-SS-03 @ 5'	11/30/2023	5	<0.00200	<0.00200	<0.00200	<0.00200	<0.00200	<0.00200	<0.00380	<500	<0.200	30.7	101
WH-SS-04 @ 5'	11/30/2023	5	<0.00200	<0.00200	<0.00200	<0.00200	<0.00200	<0.00200	<0.00380	<500	<0.200	<25.0	<100
WH-FS-01 @ 6'	11/30/2023	6	<0.00200	<0.00200	<0.00200	<0.00200	<0.00200	0.00616	<0.00380	<500	0.636	73.2	<100
MW-01 @ 7.5-10'	2/26/2024	7.5-10	<0.00200	<0.00200	<0.00200	<0.00200	<0.00200	<0.00200	<0.00380	<500	<0.200	<25.0	<100
MW-02 @ 7.5-10'	2/26/2024	7.5-10	<0.00200	<0.00200	<0.00200	<0.00200	<0.00200	<0.00200	<0.00380	<500	<0.200	<25.0	<100
MW-03 @ 7.5-10'	2/26/2024	7.5-10	<0.00200	<0.00200	<0.00200	<0.00200	<0.00200	<0.00200	<0.00380	<500	<0.200	<25.0	<100
MW-04 @ 7.5-10'	2/26/2024	7.5-10	<0.00200	<0.00200	<0.00200	<0.00200	<0.00200	<0.00200	<0.00380	<500	<0.200	<25.0	<100
MW-05 @ 7.5-10'	2/26/2024	7.5-10	<0.00200	<0.00200	<0.00200	<0.00200	<0.00200	<0.00200	<0.00380	<500	<0.200	<25.0	<100

1. Bold values are equal to or exceed the ECMC Table 915-1 limit(s)
2. Red & blue highlighted soil analytical values indicate an exceedance of the referenced soil screening level (SSL)
3. * Indicates laboratory minimum detection limit in excess of SSL
4. ** Summation of GRO+DRO+ORO must be less than 500 mg/kg

TABLE 3
SUMMARY OF POLYCYCLIC AROMATIC HYDROCARBON SOIL CHEMISTRY DATA
NOBLE ENERGY 100322
SHABLE USX AB #11-16P, WELD COUNTY, COLORADO
REM # 30818

Sample ID	Sample Date	Depth (ft)	Acenaphthene (mg/kg)	Anthracene (mg/kg)	Benzo (a) Anthracene (mg/kg)	Benzo (a) Pyrene (mg/kg)	Benzo (b) Fluoranthene (mg/kg)	Benzo (k) Fluoranthene (mg/kg)	Chrysene (mg/kg)	Dibenzo (a,h) Anthracene (mg/kg)	Fluoranthene (mg/kg)	Fluorene (mg/kg)	Indeno (1,2,3-cd) Pyrene (mg/kg)	Pyrene (mg/kg)	1-Methyl - Naphthalene (mg/kg)	2-Methyl- Naphthalene (mg/kg)
ECMC Table 915-1 Limits (Residential SSL)			360	1800	1.1	0.11	1.1	11	110	0.11	240	240	1.1	180	18	24
ECMC Table 915-1 Limits (Protection of Groundwater SSL)			0.55	5.8	0.011	0.24	0.3	2.9	9	0.096	8.9	0.54	0.98	1.3	0.006	0.019
WH-SS-01 @ 5'	11/30/2023	5	<0.020	<0.020	<0.005	<0.020	<0.020	<0.020	<0.020	<0.020	<0.020	<0.020	<0.020	<0.020	0.005	<0.002
WH-SS-02 @ 5'	11/30/2023	5	<0.020	<0.020	<0.005	<0.020	<0.020	<0.020	<0.020	<0.020	<0.020	<0.020	<0.020	<0.020	<0.002	<0.002
WH-SS-03 @ 5'	11/30/2023	5	<0.020	<0.020	<0.005	<0.020	<0.020	<0.020	<0.020	<0.020	<0.020	<0.020	<0.020	<0.020	0.002	<0.002
WH-SS-04 @ 5'	11/30/2023	5	<0.020	<0.020	<0.005	<0.020	<0.020	<0.020	<0.020	<0.020	<0.020	<0.020	<0.020	<0.020	0.006	<0.002
WH-FS-01 @ 6'	11/30/2023	6	<0.020	<0.020	<0.005	<0.020	<0.020	<0.020	<0.020	<0.020	<0.020	<0.020	<0.020	<0.020	0.041	0.003
MW-01 @ 7.5-10'	2/26/2024	7.5-10	<0.020	<0.020	<0.005	<0.020	<0.020	<0.020	<0.020	<0.020	<0.020	<0.020	<0.020	<0.020	<0.002	<0.002
MW-02 @ 7.5-10'	2/26/2024	7.5-10	<0.020	<0.020	<0.005	<0.020	<0.020	<0.020	<0.020	<0.020	<0.020	<0.020	<0.020	<0.020	<0.002	<0.002
MW-03 @ 7.5-10'	2/26/2024	7.5-10	<0.020	<0.020	<0.005	<0.020	<0.020	<0.020	<0.020	<0.020	<0.020	<0.020	<0.020	<0.020	<0.002	<0.002
MW-04 @ 7.5-10'	2/26/2024	7.5-10	<0.020	<0.020	<0.005	<0.020	<0.020	<0.020	<0.020	<0.020	<0.020	<0.020	<0.020	<0.020	<0.002	<0.002
MW-05 @ 7.5-10'	2/26/2024	7.5-10	<0.020	<0.020	<0.005	<0.020	<0.020	<0.020	<0.020	<0.020	<0.020	<0.020	<0.020	<0.020	<0.002	<0.002

1. Bold values are equal to or exceed the ECMC Table 915-1 limit(s)
2. Red & blue highlighted soil analytical values indicate an exceedance of the referenced soil screening level (SSL)
3. * Indicates laboratory minimum detection limit in excess of SSL

TABLE 4
SUMMARY OF SOIL SUITABILITY FOR RECLAMATION
NOBLE ENERGY 100322
SHABLE USX AB #11-16P, WELD COUNTY, COLORADO
REM # 30818

Sample ID	Sample Date	Depth (ft)	pH (Standard Units)	EC (mmhos/cm)	SAR (Standard Units)	Boron (mg/L)
ECMC Table 915-1 Soil Suitability Limits			6 - 8.3	<4	<6	2
WH-SS-01 @ 5'	11/30/2023	5	8.29	0.228	1.05	0.130
WH-SS-02 @ 5'	11/30/2023	5	8.27	0.215	1.08	0.194
WH-SS-03 @ 5'	11/30/2023	5	8.28	0.256	1.32	0.142
WH-SS-04 @ 5'	11/30/2023	5	8.35	0.298	1.37	0.147
WH-FS-01 @ 6'	11/30/2023	6	8.30	0.340	2.59	0.192
MW-01 @ 7.5-10'	2/26/2024	7.5-10	8.46	0.456	2.57	0.432
MW-02 @ 7.5-10'	2/26/2024	7.5-10	8.42	0.490	3.02	0.195
MW-03 @ 7.5-10'	2/26/2024	7.5-10	8.42	0.690	3.70	0.395
MW-04 @ 7.5-10'	2/26/2024	7.5-10	8.15	0.293	3.10	0.227
MW-05 @ 7.5-10'	2/26/2024	7.5-10	8.32	0.406	0.870	0.338
**Background-01 @ 2'	11/30/2023	2	8.27	NA	NA	NA
Background-01 @ 7.5-10'	2/26/2024	7.5-10	8.24	0.812	1.26	1.28
Background-02 @ 7.5-10'	2/26/2024	7.5-10	8.01	4.77	3.56	3.42
Background-03 @ 7.5-10'	2/26/2024	7.5-10	8.12	4.06	7.41	1.68
Background-04 @ 7.5-10'	2/26/2024	7.5-10	7.83	1.63	7.02	0.226
Background-05 @ 7.5-10'	2/26/2024	7.5-10	8.54	0.327	4.13	0.191
Maximum Background Concentration			8.54	4.77	7.41	3.42
Average Background Concentration			8.17	2.32	4.68	1.36

1. Bold values are equal to or exceed the ECMC Table 915-1 limit(s)

2. Blue highlighted soil analytical values indicate a regulatory exceedance

NA - Not analyzed

**Background-01 @ 2' collected during initial wellhead decommissioning

TABLE 5
SUMMARY OF METALS IN SOIL CHEMISTRY DATA
NOBLE ENERGY 100322
SHABLE USX AB #11-16P, WELD COUNTY, COLORADO
REM # 30818

Sample ID	Sample Date	Depth (ft)	Arsenic (mg/kg)	Barium (mg/kg)	Cadmium (mg/kg)	Chromium (VI) (mg/kg)	Copper (mg/kg)	Lead (mg/kg)	Nickel (mg/kg)	Selenium (mg/kg)	Silver (mg/kg)	Zinc (mg/kg)
ECMC Table 915-1 Limits (Residential SSL)			0.68	15000	71	0.3	3100	400	1500	390	390	23000
ECMC Table 915-1 Limits (Protection of Groundwater SSL)			0.29	82	0.38	0.00067	46	14	26	0.26	0.8	370
WH-SS-01 @ 5'	11/30/2023	5	3.8	58.5	<0.25	<0.244*	6.4	6.76	9.27	0.868	<0.25	27
WH-SS-02 @ 5'	11/30/2023	5	2.56	76.1	<0.25	<0.244*	6.58	6.71	6.94	0.698	<0.25	24.2
WH-SS-03 @ 5'	11/30/2023	5	2.64	59.4	<0.25	<0.244*	4.04	4.73	3.68	0.593	<0.25	17.8
WH-SS-04 @ 5'	11/30/2023	5	2.54	51.9	<0.25	<0.244*	4.91	8.11	4.77	0.749	<0.25	21.3
WH-FS-01 @ 6'	11/30/2023	6	4.64	45.2	<0.25	<0.488*	6.13	6.24	8.06	0.755	<0.25	31.6
MW-01 @ 7.5-10'	2/26/2024	7.5-10	5.13	1180	1.74	<0.244*	34.9	20.1	79.8	0.422	0.106	140
MW-02 @ 7.5-10'	2/26/2024	7.5-10	3.74	38.3	0.144	<0.244*	12.3	10.0	13.7	<0.254	<0.0976	54.2
MW-03 @ 7.5-10'	2/26/2024	7.5-10	7.56	69.0	0.146	<0.244*	24.0	24.4	15.1	<0.233	<0.0896	86.6
MW-04 @ 7.5-10'	2/26/2024	7.5-10	3.73	34.1	0.111	<0.244*	<9.05	6.70	6.29	<0.235	<0.0905	<33.5
MW-05 @ 7.5-10'	2/26/2024	7.5-10	2.84	159	0.480	<0.244*	14.7	11.7	21.2	<0.240	<0.0921	51.1
**Background-01 @ 2'	11/30/2023	2	2.71	NA	NA	NA	NA	NA	NA	0.110	NA	NA
Background-01 @ 7.5-10'	2/26/2024	7.5-10	2.28	50.4	0.475	<0.244*	32.8	21.0	15.6	0.348	0.146	59.7
Background-02 @ 7.5-10'	2/26/2024	7.5-10	4.13	67.9	1.09	<0.244*	27.9	18.7	33.4	0.552	0.0921	118
Background-03 @ 7.5-10'	2/26/2024	7.5-10	5.66	46.8	0.139	<0.244*	14.7	16.8	6.53	<0.230	<0.0920	<34.0
Background-04 @ 7.5-10'	2/26/2024	7.5-10	2.68	23.4	<0.0922	<0.244*	<9.22	5.19	6.34	<0.240	<0.0922	40.9
Background-05 @ 7.5-10'	2/26/2024	7.5-10	2.90	40.3	0.136	<0.244*	<8.66	10.2	7.33	<0.225	<0.0866	53.6
Maximum Background Concentration			5.66	67.9	1.09		32.8	21.0	33.4	0.552	0.146	118
125% Maximum Background Concentration			7.08	84.9	1.36		41.0	26.3	41.8	0.690	0.183	148

1. Bold values are equal to or exceed the ECMC Table 915-1 limit(s)

2. Red & blue highlighted soil analytical values indicate an exceedance of the referenced soil screening level (SSL)

* Indicates laboratory minimum detection limit in excess of SSL

NA - Not analyzed

**Background-01 @ 2' collected during initial wellhead decommissioning



ATTACHMENT A

Monitoring Well Completion Logs

DEPTH (FT)	LITHOLOGY	SAMPLE				OVM/OVA (PPM)	BLOW COUNT (per 0.5 FT)	DEPTH (FT)	WELL CONSTRUCTION DETAIL	COMMENTS
	DESCRIPTION	GRAPHIC LOG	TYPE	NUMBER	RECOVERY %					
0	(0-5') clayey SAND - brown, dry, loose, fine grained, poorly-graded with ~10% clay, N/O, N/S	SC	DP	1	80	4.4	N/A	0		
						4.9				
5	(5-6') clayey SAND - brown, dry, dense, fine grained, poorly-graded with ~30% clay, N/O, N/S	Clst	DP	2	90	1.8	N/A	5		
	(6-11') CLAYSTONE - brown, dry to moist, hard, low plasticity, poorly graded, N/O, N/S					1.4				
10	(11-12') sandy CLAY, dark brown, wet, stiff, high plasticity, poorly-graded with ~10% fine grained sand, N/O, N/S	CL	DP	3	100	3.9	N/A	10		
	(12-15') CLAYSTONE - dark brown, moist to wet, hard, low plasticity, poorly graded, N/O, N/S					1.5				
15	(15-18') CLAYSTONE - grey/brown, moist to wet, hard, low plasticity, poorly graded, N/O, N/S	Clst	DP	4	100	3.7	N/A	15		
20	BoB @ 18'							20		
25								25		
30								30		

HA - Hand Auger
 DP - Direct Push
 HC - Hydrocarbon
 BoB - Bottom of Boring
 N/O - no odor
 N/S - no staining
 TOC - top of casing
 bgs - below ground surface

START/COMPLETION DATE: 02/26/24	SAND PACK INTERVAL (FEET): 1-18
PROJECT: SHABLE USX AB #11-16P	BENTONITE/GROUT INTERVAL (FEET): 0-1
LOGGED BY: I. McFARLAND	WELL SCREEN INTERVAL (FEET): 3-18
DRILLING COMPANY/EQUIPMENT: EAGLE/GEOPROBE	WELL DIAMETER (INCHES): 2
BORING DEPTH (FEET): 18	WELL DEPTH (FEET): 18
PID INSTRUMENT: MiniRAE 3000 - PID #10	
TIME STARTED/COMPLETED: 1114/1145	
SAMPLE COLLECTION DEPTH (FT.)/TIME: 7.5-10/1122	



EAGLE
 ENVIRONMENTAL
 CONSULTING, LLC
 8000 W 44th Ave., Wheat Ridge, CO 80033
 Ph: 303-433-0479 • F: 303-325-5449

DEPTH (FT)	LITHOLOGY	SAMPLE				OVM/OVA (PPM)	BLOW COUNT (per 0.5 FT)	DEPTH (FT)	WELL CONSTRUCTION DETAIL	COMMENTS
	DESCRIPTION	GRAPHIC LOG	TYPE	NUMBER	RECOVERY %					
0	(0-5') clayey SAND - brown, dry, loose, fine grained, poorly-graded with ~10% clay, N/O, N/S	SC	DP	1	70	6.7	N/A			
						7.1				
5	(5-6') clayey SAND - brown, dry, dense, fine grained, poorly-graded with ~30% clay, N/O, N/S	Clst	DP	2	100	2.5	N/A			
	(6-10') CLAYSTONE - brown, dry to moist, hard, low plasticity, poorly graded, N/O, N/S					3.5				
10	(10-12') sandy CLAY, dark brown/black, wet, stiff, high plasticity, poorly-graded with ~10% fine grained sand, N/O	CL	DP	3	100	4.9	N/A			
	(12-15') CLAYSTONE - dark brown, moist to wet, hard, low plasticity, poorly graded, N/O, N/S					5.2				
15	(15-18') CLAYSTONE - grey/brown, moist to wet, hard, low plasticity, poorly graded, N/O, N/S	Clst	DP	5	100	3.7	N/A			
20	BoB @ 18'									
25										
30										

HA - Hand Auger
 DP - Direct Push
 HC - Hydrocarbon
 BoB - Bottom of Boring
 N/O - no odor
 N/S - no staining
 TOC - top of casing
 bgs - below ground surface

START/COMPLETION DATE: 02/26/24	SAND PACK INTERVAL (FEET): 1-18
PROJECT: SHABLE USX AB #11-16P	BENTONITE/GROUT INTERVAL (FEET): 0-1
LOGGED BY: I. McFARLAND	WELL SCREEN INTERVAL (FEET): 3-18
DRILLING COMPANY/EQUIPMENT: EAGLE/GEOPROBE	WELL DIAMETER (INCHES): 2
BORING DEPTH (FEET): 18	WELL DEPTH (FEET): 18
PID INSTRUMENT: MiniRAE 3000 - PID #10	
TIME STARTED/COMPLETED: 1152/1215	
SAMPLE COLLECTION DEPTH (FT.)/TIME: 7.5-10/1200	



EAGLE
 ENVIRONMENTAL
 CONSULTING, LLC
 8000 W 44th Ave., Wheat Ridge, CO 80033
 Ph: 303-433-0479 • F: 303-325-5449

DEPTH (FT)	LITHOLOGY	SAMPLE				OVM/OVA (PPM)	BLOW COUNT (per 0.5 FT)	DEPTH (FT)	WELL CONSTRUCTION DETAIL	COMMENTS
	DESCRIPTION	GRAPHIC LOG	TYPE	NUMBER	RECOVERY %					
0	(0-5') clayey SAND - brown, dry, loose, fine grained, poorly-graded with ~15% clay, N/O, N/S	SC	DP	1	70	5.9	N/A			
					2.3					
5	(5-7') sandy CLAY, brown, moist, soft, low plasticity, poorly-graded with ~20% fine grained sand, N/O, N/S	CL				2.4	N/A			
	(7-9') CLAYSTONE - brown, moist, hard, low plasticity, poorly graded, N/O, N/S	Clst	DP	2	100	2.3				
	(9-10') clayey SAND - brown, moist to wet, medium dense, fine grained, poorly-graded with ~25% clay, N/O, N/S	SC					N/A			
	(10-11') sandy CLAY, black, wet, stiff, high plasticity, poorly-graded with ~10% fine grained sand, N/O	CL	DP	3	80	2.6				
	(11-18') CLAYSTONE - grey/brown, moist to wet, hard, low plasticity, poorly graded, N/O, N/S	Clst	DP	4	80	1.0	N/A			
			DP	5	100	2.1	N/A			
18	BoB @ 18'									

HA - Hand Auger
 DP - Direct Push
 HC - Hydrocarbon
 BoB - Bottom of Boring
 N/O - no odor
 N/S - no staining
 TOC - top of casing
 bgs - below ground surface

START/COMPLETION DATE: 02/26/24	SAND PACK INTERVAL (FEET): 1-18
PROJECT: SHABLE USX AB #11-16P	BENTONITE/GROUT INTERVAL (FEET): 0-1
LOGGED BY: I. McFARLAND	WELL SCREEN INTERVAL (FEET): 3-18
DRILLING COMPANY/EQUIPMENT: EAGLE/GEOPROBE	WELL DIAMETER (INCHES): 2
BORING DEPTH (FEET): 18	WELL DEPTH (FEET): 18
PID INSTRUMENT: MiniRAE 3000 - PID #10	
TIME STARTED/COMPLETED: 1219/1241	
SAMPLE COLLECTION DEPTH (FT.)/TIME: 7.5-10/1225	



EAGLE
 ENVIRONMENTAL
 CONSULTING, LLC
 8000 W 44th Ave., Wheat Ridge, CO 80033
 Ph: 303-433-0479 • F: 303-325-5449

DEPTH (FT)	LITHOLOGY	SAMPLE			OVM/OVA (PPM)	BLOW COUNT (per 0.5 FT)	DEPTH (FT)	WELL CONSTRUCTION DETAIL	COMMENTS
	DESCRIPTION	GRAPHIC LOG	TYPE	NUMBER					
0	(0-5') clayey SAND - brown, dry, loose, fine grained, poorly-graded with ~10% clay, N/O, N/S	SC	DP	1	80	5.2	N/A		
						5.4			
5	(5-6') clayey SAND - brown, dry, dense, fine grained, poorly-graded with ~30% clay, N/O, N/S	Clst	DP	2	90	5.2	N/A		
	(6-11') CLAYSTONE - brown, dry to moist, hard, low plasticity, poorly graded, N/O, N/S					4.9			
10	(11-12') sandy CLAY, dark brown, wet, stiff, high plasticity, poorly-graded with ~10% fine grained sand, N/O, N/S	CL	DP	3	80	4.6	N/A		
	(12-15') CLAYSTONE - dark brown, moist to wet, hard, low plasticity, poorly graded, N/O, N/S	Clst	DP	4	90	3.6	N/A		
15	(15-18') CLAYSTONE - grey/brown, moist to wet, hard, low plasticity, poorly graded, N/O, N/S								
18	BoB @ 18'								

HA - Hand Auger
 DP - Direct Push
 HC - Hydrocarbon
 BoB - Bottom of Boring
 N/O - no odor
 N/S - no staining
 TOC - top of casing
 bgs - below ground surface

START/COMPLETION DATE: 02/26/24	SAND PACK INTERVAL (FEET): 1-18
PROJECT: SHABLE USX AB #11-16P	BENTONITE/GROUT INTERVAL (FEET): 0-1
LOGGED BY: I. McFARLAND	WELL SCREEN INTERVAL (FEET): 3-18
DRILLING COMPANY/EQUIPMENT: EAGLE/GEOPROBE	WELL DIAMETER (INCHES): 2
BORING DEPTH (FEET): 18	WELL DEPTH (FEET): 18
PID INSTRUMENT: MiniRAE 3000 - PID #10	
TIME STARTED/COMPLETED: 1247/1306	
SAMPLE COLLECTION DEPTH (FT.)/TIME: 7.5-10/1253	



EAGLE
 ENVIRONMENTAL
 CONSULTING, LLC

8000 W 44th Ave., Wheat Ridge, CO 80033
 Ph: 303-433-0479 • F: 303-325-5449

DEPTH (FT)	LITHOLOGY	SAMPLE			OVM/OVA (PPM)	BLOW COUNT (per 0.5 FT)	DEPTH (FT)	WELL CONSTRUCTION DETAIL	COMMENTS
	DESCRIPTION	GRAPHIC LOG	TYPE	NUMBER					
0	(0-5') clayey SAND - brown, dry, loose, fine grained, poorly-graded with ~10% clay, N/O, N/S	SC	DP	1	80	5.9	N/A		
						5.1			
5	(5-6') clayey SAND - brown, dry, dense, fine grained, poorly-graded with ~30% clay, N/O, N/S	Clst	DP	2	100	3.6	N/A		
	(6-11') CLAYSTONE - brown, dry to moist, hard, low plasticity, poorly graded, N/O, N/S								
10	(11-12') sandy CLAY, dark brown, wet, stiff, high plasticity, poorly-graded with ~10% fine grained sand, N/O, N/S	CL	DP	3	80	3.3	N/A		
	(12-15') CLAYSTONE - dark brown, moist to wet, hard, low plasticity, poorly graded, N/O, N/S	Clst	DP	4	80	3.1	N/A		
15	(15-18') CLAYSTONE - grey/brown, moist to wet, hard, low plasticity, poorly graded, N/O, N/S								
18	BoB @ 18'								

HA - Hand Auger
 DP - Direct Push
 HC - Hydrocarbon
 BoB - Bottom of Boring
 N/O - no odor
 N/S - no staining
 TOC - top of casing
 bgs - below ground surface


START/COMPLETION DATE: 02/26/24	SAND PACK INTERVAL (FEET): 1-18
PROJECT: SHABLE USX AB #11-16P	BENTONITE/GROUT INTERVAL (FEET): 0-1
LOGGED BY: I. McFARLAND	WELL SCREEN INTERVAL (FEET): 3-18
DRILLING COMPANY/EQUIPMENT: EAGLE/GEOPROBE	WELL DIAMETER (INCHES): 2
BORING DEPTH (FEET): 18	WELL DEPTH (FEET): 18
PID INSTRUMENT: MiniRAE 3000 - PID #10	
TIME STARTED/COMPLETED: 1310/1331	
SAMPLE COLLECTION DEPTH (FT.)/TIME: 7.5-10/1315	



EAGLE
 ENVIRONMENTAL
 CONSULTING, LLC
 8000 W 44th Ave., Wheat Ridge, CO 80033
 Ph: 303-433-0479 • F: 303-325-5449

DEPTH (FT)	LITHOLOGY	SAMPLE				OVM/OVA (PPM)	BLOW COUNT (per 0.5 FT)	DEPTH (FT)	WELL CONSTRUCTION DETAIL	COMMENTS
	DESCRIPTION	GRAPHIC LOG	TYPE	NUMBER	RECOVERY %					
0	(0-5') clayey SAND - brown, dry to moist, loose, fine grained, poorly-graded with ~10% clay, N/O, N/S	SC	DP	1	100	1.6	N/A	0		
						2.0		5		
5	(5-6') clayey SAND - brown, moist, dense, fine grained, poorly-graded with ~30% clay, N/O, N/S	Clst	DP	2	100	1.6	N/A	5		
	(6-10') CLAYSTONE - brown, moist, hard, low plasticity, poorly graded, N/O, N/S					1.1		10		
10	BoB @ 10'							10		
15								15		
20								20		
25								25		
30								30		

HA - Hand Auger
 DP - Direct Push
 HC - Hydrocarbon
 BoB - Bottom of Boring
 N/O - no odor
 N/S - no staining
 TOC - top of casing
 bgs - below ground surface

START/COMPLETION DATE: 02/26/24		SAND PACK INTERVAL (FEET): N/A	
PROJECT: SHABLE USX AB #11-16P		BENTONITE/GROUT INTERVAL (FEET): N/A	
LOGGED BY: I. McFARLAND		WELL SCREEN INTERVAL (FEET): N/A	
DRILLING COMPANY/EQUIPMENT: EAGLE/GEOPROBE		WELL DIAMETER (INCHES): N/A	
BORING DEPTH (FEET): 10	WELL DEPTH (FEET): N/A	 <p>EAGLE ENVIRONMENTAL CONSULTING, LLC</p> <p>8000 W 44th Ave., Wheat Ridge, CO 80033 Ph: 303-433-0479 • F: 303-325-5449</p>	
PID INSTRUMENT: MiniRAE 3000 - PID #10			
TIME STARTED/COMPLETED: 1434/1449			
SAMPLE COLLECTION DEPTH (FT.)/TIME: 7.5-10/1445			

DEPTH (FT)	LITHOLOGY	SAMPLE				OVM/OVA (PPM)	BLOW COUNT (per 0.5 FT)	DEPTH (FT)	WELL CONSTRUCTION DETAIL	COMMENTS
	DESCRIPTION	GRAPHIC LOG	TYPE	NUMBER	RECOVERY %					
0	(0-5') clayey SAND - brown, dry to moist, loose, fine grained, poorly-graded with ~10% clay, N/O, N/S	SC	DP	1	90	0.7	N/A			
						0.6				
5	(5-6') clayey SAND - brown, moist, dense, fine grained, poorly-graded with ~30% clay, N/O, N/S	Clst	DP	2	90	1.4	N/A			
	(6-10') CLAYSTONE - brown, moist, hard, low plasticity, poorly graded, N/O, N/S					1.1				
10	BoB @ 10'									
15										
20										
25										
30										

HA - Hand Auger
 DP - Direct Push
 HC - Hydrocarbon
 BoB - Bottom of Boring
 N/O - no odor
 N/S - no staining
 TOC - top of casing
 bgs - below ground surface

START/COMPLETION DATE: 02/26/24	SAND PACK INTERVAL (FEET): N/A
PROJECT: SHABLE USX AB #11-16P	BENTONITE/GROUT INTERVAL (FEET): NA
LOGGED BY: I. McFARLAND	WELL SCREEN INTERVAL (FEET): N/A
DRILLING COMPANY/EQUIPMENT: EAGLE/GEOPROBE	WELL DIAMETER (INCHES): N/A
BORING DEPTH (FEET): 10	WELL DEPTH (FEET): N/A
PID INSTRUMENT: MiniRAE 3000 - PID #10	
TIME STARTED/COMPLETED: 1454/1508	
SAMPLE COLLECTION DEPTH (FT.)/TIME: 7.5-10/1506	



EAGLE
 ENVIRONMENTAL
 CONSULTING, LLC

8000 W 44th Ave., Wheat Ridge, CO 80033
 Ph: 303-433-0479 • F: 303-325-5449

DEPTH (FT)	LITHOLOGY	SAMPLE			OVM/OVA (PPM)	BLOW COUNT (per 0.5 FT)	DEPTH (FT)	WELL CONSTRUCTION DETAIL	COMMENTS
	DESCRIPTION	GRAPHIC LOG	TYPE	NUMBER					
0	(0-5') clayey SAND - brown, dry to moist, loose, fine grained, poorly-graded with ~10% clay, N/O, N/S	SC	DP	1	90	2.1	N/A		
						2.3			
5	(5-6') clayey SAND - brown, moist, dense, fine grained, poorly-graded with ~30% clay, N/O, N/S	Clst	DP	2	100	2.1	N/A		
	(6-10') CLAYSTONE - brown, moist, hard, low plasticity, poorly graded, N/O, N/S					1.8			
10	BoB @ 10'								
15									
20									
25									
30									

HA - Hand Auger
 DP - Direct Push
 HC - Hydrocarbon
 BoB - Bottom of Boring
 N/O - no odor
 N/S - no staining
 TOC - top of casing
 bgs - below ground surface


START/COMPLETION DATE: 02/26/24	SAND PACK INTERVAL (FEET): N/A
PROJECT: SHABLE USX AB #11-16P	BENTONITE/GROUT INTERVAL (FEET): N/A
LOGGED BY: I. McFARLAND	WELL SCREEN INTERVAL (FEET): N/A
DRILLING COMPANY/EQUIPMENT: EAGLE/GEOPROBE	WELL DIAMETER (INCHES): N/A
BORING DEPTH (FEET): 10	WELL DEPTH (FEET): N/A
PID INSTRUMENT: MiniRAE 3000 - PID #10	
TIME STARTED/COMPLETED: 1510/1525	
SAMPLE COLLECTION DEPTH (FT.)/TIME: 7.5-10/1522	



EAGLE
 ENVIRONMENTAL
 CONSULTING, LLC
 8000 W 44th Ave., Wheat Ridge, CO 80033
 Ph: 303-433-0479 • F: 303-325-5449

DEPTH (FT)	LITHOLOGY	SAMPLE				OVM/OVA (PPM)	BLOW COUNT (per 0.5 FT)	DEPTH (FT)	WELL CONSTRUCTION DETAIL	COMMENTS
	DESCRIPTION	GRAPHIC LOG	TYPE	NUMBER	RECOVERY %					
0	(0-7.5') CLAYSTONE - brown, dry, hard, low plasticity, poorly graded, N/O, N/S	Cist	DP	1	90	1.2	N/A			
5						1.3				
5	(7.5-10') silty SAND - light brown, dry, loose, fine grained, poorly-graded with ~25% silt, N/O, N/S	SM	DP	2	100	2.4	N/A			
10						2.5				
10	BoB @ 10'									
15										
20										
25										
30										

HA - Hand Auger
 DP - Direct Push
 HC - Hydrocarbon
 BoB - Bottom of Boring
 N/O - no odor
 N/S - no staining
 TOC - top of casing
 bgs - below ground surface

START/COMPLETION DATE: 02/26/24		SAND PACK INTERVAL (FEET): N/A	
PROJECT: SHABLE USX AB #11-16P		BENTONITE/GROUT INTERVAL (FEET): N/A	
LOGGED BY: I. McFARLAND		WELL SCREEN INTERVAL (FEET): N/A	
DRILLING COMPANY/EQUIPMENT: EAGLE/GEOPROBE		WELL DIAMETER (INCHES): N/A	
BORING DEPTH (FEET): 10	WELL DEPTH (FEET): N/A	 <p>EAGLE ENVIRONMENTAL CONSULTING, LLC</p> <p>8000 W 44th Ave., Wheat Ridge, CO 80033 Ph: 303-433-0479 • F: 303-325-5449</p>	
PID INSTRUMENT: MiniRAE 3000 - PID #10			
TIME STARTED/COMPLETED: 1529/1540			
SAMPLE COLLECTION DEPTH (FT.)/TIME: 7.5-10/1538			

DEPTH (FT)	LITHOLOGY	SAMPLE			OVM/OVA (PPM)	BLOW COUNT (per 0.5 FT)	DEPTH (FT)	WELL CONSTRUCTION DETAIL	COMMENTS
	DESCRIPTION	GRAPHIC LOG	TYPE	NUMBER					
0	(0-5') clayey SAND - brown, dry to moist, loose, fine grained, poorly-graded with ~10% clay, N/O, N/S	SC	DP	1	90	0.5	N/A		
						0.1			
5	(5-6') clayey SAND - brown, moist, dense, fine grained, poorly-graded with ~30% clay, N/O, N/S	Clst	DP	2	100	0.8	N/A		
	(6-10') CLAYSTONE - brown, moist, hard, low plasticity, poorly graded, N/O, N/S					0.7			
10	BoB @ 10'								
15									
20									
25									
30									

HA - Hand Auger
 DP - Direct Push
 HC - Hydrocarbon
 BoB - Bottom of Boring
 N/O - no odor
 N/S - no staining
 TOC - top of casing
 bgs - below ground surface

START/COMPLETION DATE: 02/26/24	SAND PACK INTERVAL (FEET): N/A
PROJECT: SHABLE USX AB #11-16P	BENTONITE/GROUT INTERVAL (FEET): N/A
LOGGED BY: I. McFARLAND	WELL SCREEN INTERVAL (FEET): N/A
DRILLING COMPANY/EQUIPMENT: EAGLE/GEOPROBE	WELL DIAMETER (INCHES): N/A
BORING DEPTH (FEET): 10	WELL DEPTH (FEET): N/A
PID INSTRUMENT: MiniRAE 3000 - PID #10	
TIME STARTED/COMPLETED: 1543/1555	
SAMPLE COLLECTION DEPTH (FT.)/TIME: 7.5-10/1552	



EAGLE
 ENVIRONMENTAL
 CONSULTING, LLC

8000 W 44th Ave., Wheat Ridge, CO 80033
 Ph: 303-433-0479 • F: 303-325-5449



ATTACHMENT B

Laboratory Analytical Reports



March 26, 2024

Eagle Environmental Consulting, LLC

Andrew Newberry

8000 W 44th Ave

Wheat Ridge CO 80033

Project Name - Noble - Shable USX AB#11-16P

Project Number - [none]

Attached are your analytical results for Noble - Shable USX AB#11-16P received by Origins Laboratory, Inc. February 27, 2024. This project is associated with Origins project number Y402689-01.

The analytical results in the following report were analyzed under the guidelines of EPA Methods. These methods are identified as follows; "SW" are defined in SW-846, "EPA" are defined in 40CFR part 136 and "SM" are defined in the most current revision of Standard Methods For the Examination of Water and Wastewater.

The analytical results apply specifically to the samples and analyses specified per the attached Chain of Custody. As such, this report shall not be reproduced except in full, without the written approval of Origin's laboratory.

Unless otherwise noted, the analytical results for all soil samples are reported on a wet weight basis. All analytical analyses were performed under NELAP guidelines unless noted by a data qualifier.

Any holding time exceedances, deviations from the method specifications or deviations from Origins Laboratory's Standard Operating Procedures are outlined in the case narrative.

Thank you for selecting Origins for your analytical needs. Please contact us with any questions concerning this report, or if we can help with anything at all.

Origins Laboratory, Inc.
303.433.1322
o-squad@oelabinc.com



1725 Elk Place, Denver, CO 80211 | Phone: 303.433.1322 | Fax: 303.265.9645

Eagle Environmental Consulting, LLC
8000 W 44th Ave
Wheat Ridge CO 80033

Andrew Newberry
Project Number: [none]
Project: Noble - Shable USX AB#11-16P

CROSS REFERENCE REPORT

Sample ID	Laboratory ID	Matrix	Date Sampled	Date Received
MW-01@7.5-10'	Y402689-01	Soil	February 26, 2024 11:22	02/27/2024 16:45
MW-02@7.5-10'	Y402689-02	Soil	February 26, 2024 12:00	02/27/2024 16:45
MW-03@7.5-10'	Y402689-03	Soil	February 26, 2024 12:25	02/27/2024 16:45
MW-04@7.5-10'	Y402689-04	Soil	February 26, 2024 12:53	02/27/2024 16:45
MW-05@7.5-10'	Y402689-05	Soil	February 26, 2024 13:15	02/27/2024 16:45

Origins Laboratory, Inc.



The results in this report apply to the samples analyzed in accordance with the chain of custody document. This analytical report must be reproduced in its entirety.

Eagle Environmental Consulting, LLC
 8000 W 44th Ave
 Wheat Ridge CO 80033

Andrew Newberry
 Project Number: [none]
 Project: Noble - Shable USX AB#11-16P

Origins Laboratory

F-012207-01-R1
 Effective Date: 01/09/12

Sample Receipt Checklist

Origins Work Order: 444020891

Client: Eagle
 Client Project ID: Shable USX AB #11-16P

Checklist Completed by: JST/ELS

Shipped Via: TRP
 (UPS, FedEx, Hand Delivered, Pick-up, etc.)
 Airbill #: N/A

Date/time completed: 2/29/12

Matrix(s) Received: (Check all that apply): Soil/Solid Water Other: _____

Cooler Number/Temperature: 1 / 10.2 °C _____ / _____ °C _____ / _____ °C (Describe)

Thermometer ID: T004

Requirement Description	Yes	No	N/A	Comments (if any)
If samples require cooling, was the temperature between 0°C to ≤ 6°C ⁽¹⁾ ?	/			
Is there ice present (document if blue ice is used)	/			
Are custody seals present on cooler? (if so, document in comments if they are signed and dated, broken or intact)		/		
Are custody seals present on each sample container? (if so, document in comments if they are signed and dated, broken or intact)		/		
Were all samples received intact ⁽¹⁾ ?	/			
Was adequate sample volume provided ⁽¹⁾ ?	/			
Are short holding time analytes or samples with HTs due within 48 hours present ⁽¹⁾ ?		/		
Is a chain-of-custody (COC) present and filled out completely ⁽¹⁾ ?	/			
Does the COC agree with the number and type of sample bottles received ⁽¹⁾ ?	/			
Do the sample IDs on the bottle labels match the COC ⁽¹⁾ ?	/			
Is the COC properly relinquished by the client with date and time recorded ⁽¹⁾ ?	/			
For volatiles in water – is there headspace (> ¼ inch bubble) present? If yes, contact client and note in narrative.			/	
Are samples preserved that require preservation and was it checked ⁽¹⁾ ? (note ID of confirmation instrument used in comments) / (preservation is not confirmed for subcontracted analyses in order to insure sample integrity)/(pH <2 for samples preserved with HNO ₃ , HCL, H ₂ SO ₄) / (pH >10 for samples preserved with NaAsO ₂ +NaOH, ZnAc+NaOH)			/	
Additional Comments (if any):				

⁽¹⁾If NO, then contact the client before proceeding with analysis and note date/time and person contacted as well as the corrective action to in the additional comments (above) and the case narrative.

Reviewed by (Project Manager)

2/29/12
 Date/Time Reviewed

Origins Laboratory, Inc.



The results in this report apply to the samples analyzed in accordance with the chain of custody document. This analytical report must be reproduced in its entirety.

Eagle Environmental Consulting, LLC
 8000 W 44th Ave
 Wheat Ridge CO 80033

Andrew Newberry
 Project Number: [none]
 Project: Noble - Shable USX AB#11-16P

MW-01@7.5-10'
2/26/2024 11:22:00AM

Analyte	Result	Min Detection Limit	Reporting Limit	Units	Dilution	Batch	Prepared	Analyzed	Notes
---------	--------	---------------------	-----------------	-------	----------	-------	----------	----------	-------

Origins Laboratory, Inc.
Y402689-01 (Soil)

Boron (DTPA Sorbitol)

Boron	0.432		0.0995	mg/L	1	B4C0505	03/05/2024	03/06/2024	
-------	-------	--	--------	------	---	---------	------------	------------	--

DRO/ORO by EPA 8015D

Diesel (C10-C28)	ND		25.0	mg/kg	1	B4B2936	02/29/2024	03/08/2024	U
Residual Range Organics (C28-C40)	ND		100	"	"	"	"	"	U

Surrogate: o-Terphenyl	88.3 %		50-150			"	"	"	
------------------------	--------	--	--------	--	--	---	---	---	--

GBTEX+TMBs by 8260D

1,2,4-Trimethylbenzene	ND		0.00200	mg/kg	1	B4B2842	02/28/2024	02/29/2024	U
1,3,5-Trimethylbenzene	ND		0.00200	"	"	"	"	"	U
Benzene	ND		0.00200	"	"	"	"	"	U
Ethylbenzene	ND		0.00200	"	"	"	"	"	U
Naphthalene	ND		0.00380	"	"	"	"	"	U
Toluene	ND		0.00200	"	"	"	"	"	U
Xylenes, total	ND		0.00200	"	"	"	"	"	U
Gasoline Range Hydrocarbons	ND		0.200	"	"	"	"	"	U

Origins Laboratory, Inc.



The results in this report apply to the samples analyzed in accordance with the chain of custody document. This analytical report must be reproduced in its entirety.

Eagle Environmental Consulting, LLC
 8000 W 44th Ave
 Wheat Ridge CO 80033

Andrew Newberry
 Project Number: [none]
 Project: Noble - Shable USX AB#11-16P

MW-01@7.5-10'
2/26/2024 11:22:00AM

Analyte	Result	Min Detection Limit	Reporting Limit	Units	Dilution	Batch	Prepared	Analyzed	Notes
---------	--------	---------------------	-----------------	-------	----------	-------	----------	----------	-------

Origins Laboratory, Inc.
Y402689-01 (Soil)

GBTEX+TMBs by 8260D

Surrogate: 1,2-Dichloroethane-d4	111 %		70-130			B4B28 42	02/28/2024	02/29/2024	
Surrogate: Toluene-d8	97.6 %		70-130			"	"	"	
Surrogate: 4-Bromofluorobenzene	99.2 %		70-130			"	"	"	

Metals by Saturated Paste by EPA 6010

Calcium	0.667		0.499	meq/L	10	[CALC]	03/05/2024	03/06/2024	
Magnesium	1.46		0.823	"	"	"	"	"	
Sodium	2.65		0.435	"	"	"	"	"	

PAH by EPA 8270E

1-Methylnaphthalene	ND		0.002	mg/kg	1	B4C0101	03/01/2024	03/01/2024	U
2-Methylnaphthalene	ND		0.002	"	"	"	"	"	U
Acenaphthene	ND		0.020	"	"	"	"	"	U
Anthracene	ND		0.020	"	"	"	"	"	U
Benzo (a) anthracene	ND		0.005	"	"	"	"	"	U
Benzo (a) pyrene	ND		0.020	"	"	"	"	"	U
Benzo (b) fluoranthene	ND		0.020	"	"	"	"	"	U
Benzo (k) fluoranthene	ND		0.020	"	"	"	"	"	U
Chrysene	ND		0.020	"	"	"	"	"	U
Dibenz (a,h) anthracene	ND		0.020	"	"	"	"	"	U

Origins Laboratory, Inc.



The results in this report apply to the samples analyzed in accordance with the chain of custody document. This analytical report must be reproduced in its entirety.

Eagle Environmental Consulting, LLC
 8000 W 44th Ave
 Wheat Ridge CO 80033

Andrew Newberry
 Project Number: [none]
 Project: Noble - Shable USX AB#11-16P

MW-01@7.5-10'

2/26/2024 11:22:00AM

Analyte	Result	Min Detection Limit	Reporting Limit	Units	Dilution	Batch	Prepared	Analyzed	Notes
---------	--------	---------------------	-----------------	-------	----------	-------	----------	----------	-------

Origins Laboratory, Inc.
Y402689-01 (Soil)

PAH by EPA 8270E

Fluoranthene	ND		0.020	mg/kg	1	B4C0101	03/01/2024	03/01/2024	U
Fluorene	ND		0.020	"	"	"	"	"	U
Indeno (1,2,3-cd) pyrene	ND		0.020	"	"	"	"	"	U
Pyrene	ND		0.020	"	"	"	"	"	U

Surrogate: Fluorene-d10	100 %		60-130			"	"	"	
Surrogate: Anthracene-d10	94.7 %		60-130			"	"	"	
Surrogate: Pyrene-d10	103 %		60-130			"	"	"	
Surrogate: Benzo (a) pyrene-d12	101 %		60-130			"	"	"	

pH in Soil by 9045D

pH	8.46			pH Units	1	B4C0516	03/05/2024	03/06/2024	
----	------	--	--	----------	---	---------	------------	------------	--

SAR by 20B Saturated Paste

SAR	2.57		0.0100	SAR	1	B4C0510	03/05/2024	03/06/2024	
-----	------	--	--------	-----	---	---------	------------	------------	--

Specific Conductance Mod. 9050A

Specific Conductance (EC)	0.456		0.00500	mmhos/cm	1	B4C0516	03/05/2024	03/06/2024	
---------------------------	-------	--	---------	----------	---	---------	------------	------------	--

Table 915 metals by EPA 6020B

Origins Laboratory, Inc.



The results in this report apply to the samples analyzed in accordance with the chain of custody document. This analytical report must be reproduced in its entirety.

Eagle Environmental Consulting, LLC
 8000 W 44th Ave
 Wheat Ridge CO 80033

Andrew Newberry
 Project Number: [none]
 Project: Noble - Shable USX AB#11-16P

MW-01@7.5-10'
2/26/2024 11:22:00AM

Analyte	Result	Min Detection Limit	Reporting Limit	Units	Dilution	Batch	Prepared	Analyzed	Notes
---------	--------	---------------------	-----------------	-------	----------	-------	----------	----------	-------

Origins Laboratory, Inc.
Y402689-01 (Soil)

Table 915 metals by EPA 6020B

Arsenic	5.13	0.265	mg/kg	10	B4B2825	02/28/2024	03/11/2024
Barium	1180	9.15	"	"	"	"	"
Cadmium	1.74	0.0915	"	"	"	"	"
Copper	34.9	9.15	"	"	"	"	"
Lead	20.1	0.915	"	"	"	"	"
Nickel	79.8	0.915	"	"	"	"	"
Selenium	0.422	0.238	"	"	"	"	"
Silver	0.106	0.0915	"	"	"	"	"
Zinc	140	33.9	"	"	"	"	"

Total Metals by 7196A

Chromium, Hexavalent	ND	0.244	0.5	mg/Kg	1	L737860	02/26/2024	03/14/2024
----------------------	----	-------	-----	-------	---	---------	------------	------------

Origins Laboratory, Inc.



The results in this report apply to the samples analyzed in accordance with the chain of custody document. This analytical report must be reproduced in its entirety.

Eagle Environmental Consulting, LLC
 8000 W 44th Ave
 Wheat Ridge CO 80033

Andrew Newberry
 Project Number: [none]
 Project: Noble - Shable USX AB#11-16P

MW-02@7.5-10'

2/26/2024 12:00:00PM

Analyte	Result	Min Detection Limit	Reporting Limit	Units	Dilution	Batch	Prepared	Analyzed	Notes
---------	--------	---------------------	-----------------	-------	----------	-------	----------	----------	-------

Origins Laboratory, Inc.
Y402689-02 (Soil)

Boron (DTPA Sorbitol)

Boron	0.195		0.0997	mg/L	1	B4C0505	03/05/2024	03/06/2024	
-------	-------	--	--------	------	---	---------	------------	------------	--

DRO/ORO by EPA 8015D

Diesel (C10-C28)	ND		25.0	mg/kg	1	B4B2936	02/29/2024	03/08/2024	U
Residual Range Organics (C28-C40)	ND		100	"	"	"	"	"	U

Surrogate: o-Terphenyl	85.3 %		50-150			"	"	"	
------------------------	--------	--	--------	--	--	---	---	---	--

GBTEX+TMBs by 8260D

1,2,4-Trimethylbenzene	ND		0.00200	mg/kg	1	B4B2842	02/28/2024	02/29/2024	U
1,3,5-Trimethylbenzene	ND		0.00200	"	"	"	"	"	U
Benzene	ND		0.00200	"	"	"	"	"	U
Ethylbenzene	ND		0.00200	"	"	"	"	"	U
Naphthalene	ND		0.00380	"	"	"	"	"	U
Toluene	ND		0.00200	"	"	"	"	"	U
Xylenes, total	ND		0.00200	"	"	"	"	"	U
Gasoline Range Hydrocarbons	ND		0.200	"	"	"	"	"	U

Origins Laboratory, Inc.



The results in this report apply to the samples analyzed in accordance with the chain of custody document. This analytical report must be reproduced in its entirety.

Eagle Environmental Consulting, LLC
 8000 W 44th Ave
 Wheat Ridge CO 80033

Andrew Newberry
 Project Number: [none]
 Project: Noble - Shable USX AB#11-16P

MW-02@7.5-10'

2/26/2024 12:00:00PM

Analyte	Result	Min Detection Limit	Reporting Limit	Units	Dilution	Batch	Prepared	Analyzed	Notes
---------	--------	---------------------	-----------------	-------	----------	-------	----------	----------	-------

Origins Laboratory, Inc.
Y402689-02 (Soil)

GBTEX+TMBs by 8260D

Surrogate: 1,2-Dichloroethane-d4	111 %		70-130			B4B28 42	02/28/2024	02/29/2024	
Surrogate: Toluene-d8	96.3 %		70-130			"	"	"	
Surrogate: 4-Bromofluorobenzene	100 %		70-130			"	"	"	

Metals by Saturated Paste by EPA 6010

Calcium	0.601	0.499	meq/L	10	[CALC]		03/05/2024	03/06/2024	
Magnesium	1.31	0.823	"	"	"	"	"	"	
Sodium	2.95	0.435	"	"	"	"	"	"	

PAH by EPA 8270E

1-Methylnaphthalene	ND	0.002	mg/kg	1	B4C0101		03/01/2024	03/01/2024	U
2-Methylnaphthalene	ND	0.002	"	"	"	"	"	"	U
Acenaphthene	ND	0.020	"	"	"	"	"	"	U
Anthracene	ND	0.020	"	"	"	"	"	"	U
Benzo (a) anthracene	ND	0.005	"	"	"	"	"	"	U
Benzo (a) pyrene	ND	0.020	"	"	"	"	"	"	U
Benzo (b) fluoranthene	ND	0.020	"	"	"	"	"	"	U
Benzo (k) fluoranthene	ND	0.020	"	"	"	"	"	"	U
Chrysene	ND	0.020	"	"	"	"	"	"	U
Dibenz (a,h) anthracene	ND	0.020	"	"	"	"	"	"	U

Origins Laboratory, Inc.



The results in this report apply to the samples analyzed in accordance with the chain of custody document. This analytical report must be reproduced in its entirety.

Eagle Environmental Consulting, LLC
 8000 W 44th Ave
 Wheat Ridge CO 80033

Andrew Newberry
 Project Number: [none]
 Project: Noble - Shable USX AB#11-16P

MW-02@7.5-10'

2/26/2024 12:00:00PM

Analyte	Result	Min Detection Limit	Reporting Limit	Units	Dilution	Batch	Prepared	Analyzed	Notes
---------	--------	---------------------	-----------------	-------	----------	-------	----------	----------	-------

Origins Laboratory, Inc.
Y402689-02 (Soil)

PAH by EPA 8270E

Fluoranthene	ND		0.020	mg/kg	1	B4C0101	03/01/2024	03/01/2024	U
Fluorene	ND		0.020	"	"	"	"	"	U
Indeno (1,2,3-cd) pyrene	ND		0.020	"	"	"	"	"	U
Pyrene	ND		0.020	"	"	"	"	"	U

Surrogate: Fluorene-d10	101 %		60-130			"	"	"	
Surrogate: Anthracene-d10	94.2 %		60-130			"	"	"	
Surrogate: Pyrene-d10	99.9 %		60-130			"	"	"	
Surrogate: Benzo (a) pyrene-d12	106 %		60-130			"	"	"	

pH in Soil by 9045D

pH	8.42			pH Units	1	B4C0516	03/05/2024	03/06/2024	
----	------	--	--	----------	---	---------	------------	------------	--

SAR by 20B Saturated Paste

SAR	3.02		0.0100	SAR	1	B4C0510	03/05/2024	03/06/2024	
-----	------	--	--------	-----	---	---------	------------	------------	--

Specific Conductance Mod. 9050A

Specific Conductance (EC)	0.490		0.00500	mmhos/cm	1	B4C0516	03/05/2024	03/06/2024	
---------------------------	-------	--	---------	----------	---	---------	------------	------------	--

Table 915 metals by EPA 6020B

Origins Laboratory, Inc.



The results in this report apply to the samples analyzed in accordance with the chain of custody document. This analytical report must be reproduced in its entirety.

Eagle Environmental Consulting, LLC
 8000 W 44th Ave
 Wheat Ridge CO 80033

Andrew Newberry
 Project Number: [none]
 Project: Noble - Shable USX AB#11-16P

MW-02@7.5-10'

2/26/2024 12:00:00PM

Analyte	Result	Min Detection Limit	Reporting Limit	Units	Dilution	Batch	Prepared	Analyzed	Notes
---------	--------	---------------------	-----------------	-------	----------	-------	----------	----------	-------

Origins Laboratory, Inc.
Y402689-02 (Soil)

Table 915 metals by EPA 6020B

Arsenic	3.74	0.283	mg/kg	10	B4B2825	02/28/2024	03/11/2024
Barium	38.3	9.76	"	"	"	"	"
Cadmium	0.144	0.0976	"	"	"	"	"
Copper	12.3	9.76	"	"	"	"	"
Lead	10.0	0.976	"	"	"	"	"
Nickel	13.7	0.976	"	"	"	"	"
Selenium	ND	0.254	"	"	"	"	"
Silver	ND	0.0976	"	"	"	"	"
Zinc	54.2	36.1	"	"	"	"	"

Total Metals by 7196A

Chromium, Hexavalent	ND	0.244	0.5	mg/Kg	1	L739532	02/26/2024	03/20/2024
----------------------	----	-------	-----	-------	---	---------	------------	------------

Origins Laboratory, Inc.



The results in this report apply to the samples analyzed in accordance with the chain of custody document. This analytical report must be reproduced in its entirety.

Eagle Environmental Consulting, LLC
 8000 W 44th Ave
 Wheat Ridge CO 80033

Andrew Newberry
 Project Number: [none]
 Project: Noble - Shable USX AB#11-16P

MW-03@7.5-10'
2/26/2024 12:25:00PM

Analyte	Result	Min Detection Limit	Reporting Limit	Units	Dilution	Batch	Prepared	Analyzed	Notes
---------	--------	---------------------	-----------------	-------	----------	-------	----------	----------	-------

Origins Laboratory, Inc.
Y402689-03 (Soil)

Boron (DTPA Sorbitol)

Boron	0.395		0.100	mg/L	1	B4C0505	03/05/2024	03/06/2024	
-------	-------	--	-------	------	---	---------	------------	------------	--

DRO/ORO by EPA 8015D

Diesel (C10-C28)	ND		25.0	mg/kg	1	B4B2936	02/29/2024	03/08/2024	U
Residual Range Organics (C28-C40)	ND		100	"	"	"	"	"	U

Surrogate: o-Terphenyl	85.6 %		50-150			"	"	"	
------------------------	--------	--	--------	--	--	---	---	---	--

GBTEX+TMBs by 8260D

1,2,4-Trimethylbenzene	ND		0.00200	mg/kg	1	B4B2842	02/28/2024	02/29/2024	U
1,3,5-Trimethylbenzene	ND		0.00200	"	"	"	"	"	U
Benzene	ND		0.00200	"	"	"	"	"	U
Ethylbenzene	ND		0.00200	"	"	"	"	"	U
Naphthalene	ND		0.00380	"	"	"	"	"	U
Toluene	ND		0.00200	"	"	"	"	"	U
Xylenes, total	ND		0.00200	"	"	"	"	"	U
Gasoline Range Hydrocarbons	ND		0.200	"	"	"	"	"	U

Origins Laboratory, Inc.



The results in this report apply to the samples analyzed in accordance with the chain of custody document. This analytical report must be reproduced in its entirety.

Eagle Environmental Consulting, LLC
 8000 W 44th Ave
 Wheat Ridge CO 80033

Andrew Newberry
 Project Number: [none]
 Project: Noble - Shable USX AB#11-16P

MW-03@7.5-10'

2/26/2024 12:25:00PM

Analyte	Result	Min Detection Limit	Reporting Limit	Units	Dilution	Batch	Prepared	Analyzed	Notes
---------	--------	---------------------	-----------------	-------	----------	-------	----------	----------	-------

Origins Laboratory, Inc.
Y402689-03 (Soil)

GBTEX+TMBs by 8260D

Surrogate: 1,2-Dichloroethane-d4	111 %		70-130			B4B28 42	02/28/2024	02/29/2024	
Surrogate: Toluene-d8	96.1 %		70-130			"	"	"	
Surrogate: 4-Bromofluorobenzene	100 %		70-130			"	"	"	

Metals by Saturated Paste by EPA 6010

Calcium	0.794		0.499	meq/L	10	[CALC]	03/05/2024	03/06/2024	
Magnesium	1.59		0.823	"	"	"	"	"	
Sodium	4.04		0.435	"	"	"	"	"	

PAH by EPA 8270E

1-Methylnaphthalene	ND		0.002	mg/kg	1	B4C0101	03/01/2024	03/01/2024	U
2-Methylnaphthalene	ND		0.002	"	"	"	"	"	U
Acenaphthene	ND		0.020	"	"	"	"	"	U
Anthracene	ND		0.020	"	"	"	"	"	U
Benzo (a) anthracene	ND		0.005	"	"	"	"	"	U
Benzo (a) pyrene	ND		0.020	"	"	"	"	"	U
Benzo (b) fluoranthene	ND		0.020	"	"	"	"	"	U
Benzo (k) fluoranthene	ND		0.020	"	"	"	"	"	U
Chrysene	ND		0.020	"	"	"	"	"	U
Dibenz (a,h) anthracene	ND		0.020	"	"	"	"	"	U

Origins Laboratory, Inc.



The results in this report apply to the samples analyzed in accordance with the chain of custody document. This analytical report must be reproduced in its entirety.

Eagle Environmental Consulting, LLC
 8000 W 44th Ave
 Wheat Ridge CO 80033

Andrew Newberry
 Project Number: [none]
 Project: Noble - Shable USX AB#11-16P

MW-03@7.5-10'

2/26/2024 12:25:00PM

Analyte	Result	Min Detection Limit	Reporting Limit	Units	Dilution	Batch	Prepared	Analyzed	Notes
---------	--------	---------------------	-----------------	-------	----------	-------	----------	----------	-------

Origins Laboratory, Inc.
Y402689-03 (Soil)

PAH by EPA 8270E

Fluoranthene	ND		0.020	mg/kg	1	B4C0101	03/01/2024	03/01/2024	U
Fluorene	ND		0.020	"	"	"	"	"	U
Indeno (1,2,3-cd) pyrene	ND		0.020	"	"	"	"	"	U
Pyrene	ND		0.020	"	"	"	"	"	U

Surrogate: Fluorene-d10	100 %		60-130			"	"	"	
Surrogate: Anthracene-d10	94.2 %		60-130			"	"	"	
Surrogate: Pyrene-d10	99.1 %		60-130			"	"	"	
Surrogate: Benzo (a) pyrene-d12	105 %		60-130			"	"	"	

pH in Soil by 9045D

pH	8.42			pH Units	1	B4C0516	03/05/2024	03/06/2024	
----	------	--	--	----------	---	---------	------------	------------	--

SAR by 20B Saturated Paste

SAR	3.70		0.0100	SAR	1	B4C0510	03/05/2024	03/06/2024	
-----	------	--	--------	-----	---	---------	------------	------------	--

Specific Conductance Mod. 9050A

Specific Conductance (EC)	0.690		0.00500	mmhos/cm	1	B4C0516	03/05/2024	03/06/2024	
---------------------------	-------	--	---------	----------	---	---------	------------	------------	--

Table 915 metals by EPA 6020B

Origins Laboratory, Inc.



The results in this report apply to the samples analyzed in accordance with the chain of custody document. This analytical report must be reproduced in its entirety.

Eagle Environmental Consulting, LLC
 8000 W 44th Ave
 Wheat Ridge CO 80033

Andrew Newberry
 Project Number: [none]
 Project: Noble - Shable USX AB#11-16P

MW-03@7.5-10'

2/26/2024 12:25:00PM

Analyte	Result	Min Detection Limit	Reporting Limit	Units	Dilution	Batch	Prepared	Analyzed	Notes
---------	--------	---------------------	-----------------	-------	----------	-------	----------	----------	-------

Origins Laboratory, Inc.
Y402689-03 (Soil)

Table 915 metals by EPA 6020B

Arsenic	7.56	0.260	mg/kg	10	B4B2825	02/28/2024	03/11/2024
Barium	69.0	8.96	"	"	"	"	"
Cadmium	0.146	0.0896	"	"	"	"	"
Copper	24.0	8.96	"	"	"	"	"
Lead	24.4	0.896	"	"	"	"	"
Nickel	15.1	0.896	"	"	"	"	"
Selenium	ND	0.233	"	"	"	"	"
Silver	ND	0.0896	"	"	"	"	"
Zinc	86.6	33.1	"	"	"	"	"

Total Metals by 7196A

Chromium, Hexavalent	ND	0.244	0.5	mg/Kg	1	L739532	02/26/2024	03/20/2024
----------------------	----	-------	-----	-------	---	---------	------------	------------

Origins Laboratory, Inc.



The results in this report apply to the samples analyzed in accordance with the chain of custody document. This analytical report must be reproduced in its entirety.

Eagle Environmental Consulting, LLC
 8000 W 44th Ave
 Wheat Ridge CO 80033

Andrew Newberry
 Project Number: [none]
 Project: Noble - Shable USX AB#11-16P

MW-04@7.5-10'

2/26/2024 12:53:00PM

Analyte	Result	Min Detection Limit	Reporting Limit	Units	Dilution	Batch	Prepared	Analyzed	Notes
---------	--------	---------------------	-----------------	-------	----------	-------	----------	----------	-------

Origins Laboratory, Inc.
Y402689-04 (Soil)

Boron (DTPA Sorbitol)

Boron	0.227		0.0992	mg/L	1	B4C0505	03/05/2024	03/06/2024	
-------	-------	--	--------	------	---	---------	------------	------------	--

DRO/ORO by EPA 8015D

Diesel (C10-C28)	ND		25.0	mg/kg	1	B4B2936	02/29/2024	03/08/2024	U
Residual Range Organics (C28-C40)	ND		100	"	"	"	"	"	U

Surrogate: o-Terphenyl	86.4 %		50-150			"	"	"	
------------------------	--------	--	--------	--	--	---	---	---	--

GBTEX+TMBs by 8260D

1,2,4-Trimethylbenzene	ND		0.00200	mg/kg	1	B4B2842	02/28/2024	02/29/2024	U
1,3,5-Trimethylbenzene	ND		0.00200	"	"	"	"	"	U
Benzene	ND		0.00200	"	"	"	"	"	U
Ethylbenzene	ND		0.00200	"	"	"	"	"	U
Naphthalene	ND		0.00380	"	"	"	"	"	U
Toluene	ND		0.00200	"	"	"	"	"	U
Xylenes, total	ND		0.00200	"	"	"	"	"	U
Gasoline Range Hydrocarbons	ND		0.200	"	"	"	"	"	U

Origins Laboratory, Inc.



The results in this report apply to the samples analyzed in accordance with the chain of custody document. This analytical report must be reproduced in its entirety.

Eagle Environmental Consulting, LLC
 8000 W 44th Ave
 Wheat Ridge CO 80033

Andrew Newberry
 Project Number: [none]
 Project: Noble - Shable USX AB#11-16P

MW-04@7.5-10'

2/26/2024 12:53:00PM

Analyte	Result	Min Detection Limit	Reporting Limit	Units	Dilution	Batch	Prepared	Analyzed	Notes
---------	--------	---------------------	-----------------	-------	----------	-------	----------	----------	-------

Origins Laboratory, Inc.
Y402689-04 (Soil)

GBTEX+TMBs by 8260D

Surrogate: 1,2-Dichloroethane-d4	106 %		70-130			B4B28 42	02/28/2024	02/29/2024	
Surrogate: Toluene-d8	97.3 %		70-130			"	"	"	
Surrogate: 4-Bromofluorobenzene	99.1 %		70-130			"	"	"	

Metals by Saturated Paste by EPA 6010

Calcium	ND		0.499	meq/L	10	[CALC]	03/05/2024	03/06/2024	
Magnesium	ND		0.823	"	"	"	"	"	
Sodium	1.89		0.435	"	"	"	"	"	

PAH by EPA 8270E

1-Methylnaphthalene	ND		0.002	mg/kg	1	B4C0101	03/01/2024	03/01/2024	U
2-Methylnaphthalene	ND		0.002	"	"	"	"	"	U
Acenaphthene	ND		0.020	"	"	"	"	"	U
Anthracene	ND		0.020	"	"	"	"	"	U
Benzo (a) anthracene	ND		0.005	"	"	"	"	"	U
Benzo (a) pyrene	ND		0.020	"	"	"	"	"	U
Benzo (b) fluoranthene	ND		0.020	"	"	"	"	"	U
Benzo (k) fluoranthene	ND		0.020	"	"	"	"	"	U
Chrysene	ND		0.020	"	"	"	"	"	U
Dibenz (a,h) anthracene	ND		0.020	"	"	"	"	"	U

Origins Laboratory, Inc.



The results in this report apply to the samples analyzed in accordance with the chain of custody document. This analytical report must be reproduced in its entirety.

Eagle Environmental Consulting, LLC
 8000 W 44th Ave
 Wheat Ridge CO 80033

Andrew Newberry
 Project Number: [none]
 Project: Noble - Shable USX AB#11-16P

MW-04@7.5-10'

2/26/2024 12:53:00PM

Analyte	Result	Min Detection Limit	Reporting Limit	Units	Dilution	Batch	Prepared	Analyzed	Notes
---------	--------	---------------------	-----------------	-------	----------	-------	----------	----------	-------

Origins Laboratory, Inc.
Y402689-04 (Soil)

PAH by EPA 8270E

Fluoranthene	ND		0.020	mg/kg	1	B4C0101	03/01/2024	03/01/2024	U
Fluorene	ND		0.020	"	"	"	"	"	U
Indeno (1,2,3-cd) pyrene	ND		0.020	"	"	"	"	"	U
Pyrene	ND		0.020	"	"	"	"	"	U

Surrogate: Fluorene-d10	101 %		60-130			"	"	"	
Surrogate: Anthracene-d10	94.5 %		60-130			"	"	"	
Surrogate: Pyrene-d10	101 %		60-130			"	"	"	
Surrogate: Benzo (a) pyrene-d12	105 %		60-130			"	"	"	

pH in Soil by 9045D

pH	8.15			pH Units	1	B4C0516	03/05/2024	03/06/2024	
----	------	--	--	----------	---	---------	------------	------------	--

SAR by 20B Saturated Paste

SAR	3.10		0.0100	SAR	1	B4C0510	03/05/2024	03/06/2024	
-----	------	--	--------	-----	---	---------	------------	------------	--

Specific Conductance Mod. 9050A

Specific Conductance (EC)	0.293		0.00500	mmhos/cm	1	B4C0516	03/05/2024	03/06/2024	
---------------------------	-------	--	---------	----------	---	---------	------------	------------	--

Table 915 metals by EPA 6020B

Origins Laboratory, Inc.



The results in this report apply to the samples analyzed in accordance with the chain of custody document. This analytical report must be reproduced in its entirety.

Eagle Environmental Consulting, LLC
 8000 W 44th Ave
 Wheat Ridge CO 80033

Andrew Newberry
 Project Number: [none]
 Project: Noble - Shable USX AB#11-16P

MW-04@7.5-10'

2/26/2024 12:53:00PM

Analyte	Result	Min Detection Limit	Reporting Limit	Units	Dilution	Batch	Prepared	Analyzed	Notes
---------	--------	---------------------	-----------------	-------	----------	-------	----------	----------	-------

Origins Laboratory, Inc.
Y402689-04 (Soil)

Table 915 metals by EPA 6020B

Arsenic	3.73	0.262	mg/kg	10	B4B2825	02/28/2024	03/11/2024
Barium	34.1	9.05	"	"	"	"	"
Cadmium	0.111	0.0905	"	"	"	"	"
Copper	ND	9.05	"	"	"	"	"
Lead	6.70	0.905	"	"	"	"	"
Nickel	6.29	0.905	"	"	"	"	"
Selenium	ND	0.235	"	"	"	"	"
Silver	ND	0.0905	"	"	"	"	"
Zinc	ND	33.5	"	"	"	"	"

Total Metals by 7196A

Chromium, Hexavalent	ND	0.244	0.5	mg/Kg	1	L739532	02/26/2024	03/20/2024
----------------------	----	-------	-----	-------	---	---------	------------	------------

Origins Laboratory, Inc.



The results in this report apply to the samples analyzed in accordance with the chain of custody document. This analytical report must be reproduced in its entirety.

Eagle Environmental Consulting, LLC
 8000 W 44th Ave
 Wheat Ridge CO 80033

Andrew Newberry
 Project Number: [none]
 Project: Noble - Shable USX AB#11-16P

MW-05@7.5-10'
2/26/2024 1:15:00PM

Analyte	Result	Min Detection Limit	Reporting Limit	Units	Dilution	Batch	Prepared	Analyzed	Notes
---------	--------	---------------------	-----------------	-------	----------	-------	----------	----------	-------

Origins Laboratory, Inc.
Y402689-05 (Soil)

Boron (DTPA Sorbitol)

Boron	0.338		0.0999	mg/L	1	B4C0505	03/05/2024	03/06/2024	
-------	-------	--	--------	------	---	---------	------------	------------	--

DRO/ORO by EPA 8015D

Diesel (C10-C28)	ND		25.0	mg/kg	1	B4B2936	02/29/2024	03/08/2024	U
Residual Range Organics (C28-C40)	ND		100	"	"	"	"	"	U

Surrogate: o-Terphenyl	85.9 %		50-150			"	"	"	
------------------------	--------	--	--------	--	--	---	---	---	--

GBTEX+TMBs by 8260D

1,2,4-Trimethylbenzene	ND		0.00200	mg/kg	1	B4B2842	02/28/2024	02/29/2024	U
1,3,5-Trimethylbenzene	ND		0.00200	"	"	"	"	"	U
Benzene	ND		0.00200	"	"	"	"	"	U
Ethylbenzene	ND		0.00200	"	"	"	"	"	U
Naphthalene	ND		0.00380	"	"	"	"	"	U
Toluene	ND		0.00200	"	"	"	"	"	U
Xylenes, total	ND		0.00200	"	"	"	"	"	U
Gasoline Range Hydrocarbons	ND		0.200	"	"	"	"	"	U

Origins Laboratory, Inc.



The results in this report apply to the samples analyzed in accordance with the chain of custody document. This analytical report must be reproduced in its entirety.

Eagle Environmental Consulting, LLC
 8000 W 44th Ave
 Wheat Ridge CO 80033

Andrew Newberry
 Project Number: [none]
 Project: Noble - Shable USX AB#11-16P

MW-05@7.5-10'
 2/26/2024 1:15:00PM

Analyte	Result	Min Detection Limit	Reporting Limit	Units	Dilution	Batch	Prepared	Analyzed	Notes
---------	--------	---------------------	-----------------	-------	----------	-------	----------	----------	-------

Origins Laboratory, Inc.
 Y402689-05 (Soil)

GBTEX+TMBs by 8260D

Surrogate: 1,2-Dichloroethane-d4	107 %		70-130			B4B28 42	02/28/2024	02/29/2024	
Surrogate: Toluene-d8	97.2 %		70-130			"	"	"	
Surrogate: 4-Bromofluorobenzene	99.4 %		70-130			"	"	"	

Metals by Saturated Paste by EPA 6010

Calcium	1.20		0.499	meq/L	10	[CALC]	03/05/2024	03/06/2024	
Magnesium	1.76		0.823	"	"	"	"	"	
Sodium	1.06		0.435	"	"	"	"	"	

PAH by EPA 8270E

1-Methylnaphthalene	ND		0.002	mg/kg	1	B4C0101	03/01/2024	03/01/2024	U
2-Methylnaphthalene	ND		0.002	"	"	"	"	"	U
Acenaphthene	ND		0.020	"	"	"	"	"	U
Anthracene	ND		0.020	"	"	"	"	"	U
Benzo (a) anthracene	ND		0.005	"	"	"	"	"	U
Benzo (a) pyrene	ND		0.020	"	"	"	"	"	U
Benzo (b) fluoranthene	ND		0.020	"	"	"	"	"	U
Benzo (k) fluoranthene	ND		0.020	"	"	"	"	"	U
Chrysene	ND		0.020	"	"	"	"	"	U
Dibenz (a,h) anthracene	ND		0.020	"	"	"	"	"	U

Origins Laboratory, Inc.



The results in this report apply to the samples analyzed in accordance with the chain of custody document. This analytical report must be reproduced in its entirety.

Eagle Environmental Consulting, LLC
 8000 W 44th Ave
 Wheat Ridge CO 80033

Andrew Newberry
 Project Number: [none]
 Project: Noble - Shable USX AB#11-16P

MW-05@7.5-10'

2/26/2024 1:15:00PM

Analyte	Result	Min Detection Limit	Reporting Limit	Units	Dilution	Batch	Prepared	Analyzed	Notes
---------	--------	---------------------	-----------------	-------	----------	-------	----------	----------	-------

Origins Laboratory, Inc.
Y402689-05 (Soil)

PAH by EPA 8270E

Fluoranthene	ND		0.020	mg/kg	1	B4C0101	03/01/2024	03/01/2024	U
Fluorene	ND		0.020	"	"	"	"	"	U
Indeno (1,2,3-cd) pyrene	ND		0.020	"	"	"	"	"	U
Pyrene	ND		0.020	"	"	"	"	"	U

Surrogate: Fluorene-d10	100 %		60-130			"	"	"	
Surrogate: Anthracene-d10	94.1 %		60-130			"	"	"	
Surrogate: Pyrene-d10	96.2 %		60-130			"	"	"	
Surrogate: Benzo (a) pyrene-d12	104 %		60-130			"	"	"	

pH in Soil by 9045D

pH	8.32			pH Units	1	B4C0516	03/05/2024	03/06/2024	
----	------	--	--	----------	---	---------	------------	------------	--

SAR by 20B Saturated Paste

SAR	0.870		0.0100	SAR	1	B4C0510	03/05/2024	03/06/2024	
-----	-------	--	--------	-----	---	---------	------------	------------	--

Specific Conductance Mod. 9050A

Specific Conductance (EC)	0.406		0.00500	mmhos/cm	1	B4C0516	03/05/2024	03/06/2024	
---------------------------	-------	--	---------	----------	---	---------	------------	------------	--

Table 915 metals by EPA 6020B

Origins Laboratory, Inc.



The results in this report apply to the samples analyzed in accordance with the chain of custody document. This analytical report must be reproduced in its entirety.

Eagle Environmental Consulting, LLC
 8000 W 44th Ave
 Wheat Ridge CO 80033

Andrew Newberry
 Project Number: [none]
 Project: Noble - Shable USX AB#11-16P

MW-05@7.5-10'
2/26/2024 1:15:00PM

Analyte	Result	Min Detection Limit	Reporting Limit	Units	Dilution	Batch	Prepared	Analyzed	Notes
---------	--------	---------------------	-----------------	-------	----------	-------	----------	----------	-------

Origins Laboratory, Inc.
Y402689-05 (Soil)

Table 915 metals by EPA 6020B

Arsenic	2.84	0.267	mg/kg	10	B4B2825	02/28/2024	03/11/2024
Barium	159	9.21	"	"	"	"	"
Cadmium	0.480	0.0921	"	"	"	"	"
Copper	14.7	9.21	"	"	"	"	"
Lead	11.7	0.921	"	"	"	"	"
Nickel	21.2	0.921	"	"	"	"	"
Selenium	ND	0.240	"	"	"	"	"
Silver	ND	0.0921	"	"	"	"	"
Zinc	51.1	34.1	"	"	"	"	"

Total Metals by 7196A

Chromium, Hexavalent	ND	0.244	0.5	mg/Kg	1	L739532	02/26/2024	03/20/2024
----------------------	----	-------	-----	-------	---	---------	------------	------------

Origins Laboratory, Inc.



The results in this report apply to the samples analyzed in accordance with the chain of custody document. This analytical report must be reproduced in its entirety.

Eagle Environmental Consulting, LLC
 8000 W 44th Ave
 Wheat Ridge CO 80033

Andrew Newberry
 Project Number: [none]
 Project: Noble - Shable USX AB#11-16P

Volatile Organic Compounds by GC/MS SW846 8260D - Quality Control
Origins Laboratory, Inc.

Analyte	Result	Reporting Limit	Units	Spike Level	Source Result	%REC	%REC Limits	RPD	RPD Limit	Notes
---------	--------	-----------------	-------	-------------	---------------	------	-------------	-----	-----------	-------

Batch B4B2842 - EPA 5030 (soil)

Blank (B4B2842-BLK1)

Prepared: 02/28/2024 Analyzed: 02/29/2024

1,2,4-Trimethylbenzene	ND	0.00200	mg/kg							U
1,3,5-Trimethylbenzene	ND	0.00200	"							U
Benzene	ND	0.00200	"							U
Ethylbenzene	ND	0.00200	"							U
Naphthalene	ND	0.00380	"							U
Toluene	ND	0.00200	"							U
Xylenes, total	ND	0.00200	"							U
Gasoline Range Hydrocarbons	ND	0.200	"							U
Surrogate: 1,2-Dichloroethane-d4	0.12		"	0.125		98.4	70-130			
Surrogate: Toluene-d8	0.12		"	0.125		97.5	70-130			
Surrogate: 4-Bromofluorobenzene	0.12		"	0.125		99.7	70-130			

Origins Laboratory, Inc.



The results in this report apply to the samples analyzed in accordance with the chain of custody document. This analytical report must be reproduced in its entirety.

Eagle Environmental Consulting, LLC
 8000 W 44th Ave
 Wheat Ridge CO 80033

Andrew Newberry
 Project Number: [none]
 Project: Noble - Shable USX AB#11-16P

Volatile Organic Compounds by GC/MS SW846 8260D - Quality Control
Origins Laboratory, Inc.

Analyte	Result	Reporting Limit	Units	Spike Level	Source Result	%REC	%REC Limits	RPD	RPD Limit	Notes
---------	--------	-----------------	-------	-------------	---------------	------	-------------	-----	-----------	-------

Batch B4B2842 - EPA 5030 (soil)

LCS (B4B2842-BS1)

Prepared: 02/28/2024 Analyzed: 02/29/2024

1,2,4-Trimethylbenzene	0.109	0.00200	mg/kg	0.100		109	70-130			
1,3,5-Trimethylbenzene	0.111	0.00200	"	0.100		111	70-130			
Benzene	0.0979	0.00200	"	0.100		97.9	70-130			
Ethylbenzene	0.111	0.00200	"	0.100		111	70-130			
Naphthalene	0.106	0.00380	"	0.100		106	70-130			
Toluene	0.102	0.00200	"	0.100		102	70-130			
o-Xylene	0.104	0.00200	"	0.100		104	70-130			
m,p-Xylene	0.223	0.00400	"	0.200		111	70-130			
Surrogate: 1,2-Dichloroethane-d4	0.12		"	0.125		94.6	70-130			
Surrogate: Toluene-d8	0.12		"	0.125		98.4	70-130			
Surrogate: 4-Bromofluorobenzene	0.13		"	0.125		102	70-130			

Origins Laboratory, Inc.



The results in this report apply to the samples analyzed in accordance with the chain of custody document. This analytical report must be reproduced in its entirety.

Eagle Environmental Consulting, LLC
 8000 W 44th Ave
 Wheat Ridge CO 80033

Andrew Newberry
 Project Number: [none]
 Project: Noble - Shable USX AB#11-16P

Volatile Organic Compounds by GC/MS SW846 8260D - Quality Control
Origins Laboratory, Inc.

Analyte	Result	Reporting Limit	Units	Spike Level	Source Result	%REC	%REC Limits	RPD	RPD Limit	Notes
---------	--------	-----------------	-------	-------------	---------------	------	-------------	-----	-----------	-------

Batch B4B2842 - EPA 5030 (soil)

Matrix Spike (B4B2842-MS1)	Source: Y402686-01			Prepared: 02/28/2024 Analyzed: 02/29/2024						
1,2,4-Trimethylbenzene	0.0897	0.00200	mg/kg	0.100	ND	89.7	70-130			
1,3,5-Trimethylbenzene	0.0915	0.00200	"	0.100	ND	91.5	70-130			
Benzene	0.0841	0.00200	"	0.100	ND	84.1	70-130			
Ethylbenzene	0.0939	0.00200	"	0.100	ND	93.9	70-130			
Naphthalene	0.0939	0.00380	"	0.100	ND	93.9	70-130			
Toluene	0.0867	0.00200	"	0.100	ND	86.7	70-130			
o-Xylene	0.0880	0.00200	"	0.100	ND	88.0	70-130			
m,p-Xylene	0.187	0.00400	"	0.200	ND	93.7	70-130			
Surrogate: 1,2-Dichloroethane-d4	0.13		"	0.125		101	70-130			
Surrogate: Toluene-d8	0.12		"	0.125		99.0	70-130			
Surrogate: 4-Bromofluorobenzene	0.13		"	0.125		103	70-130			

Origins Laboratory, Inc.



The results in this report apply to the samples analyzed in accordance with the chain of custody document. This analytical report must be reproduced in its entirety.

Eagle Environmental Consulting, LLC
 8000 W 44th Ave
 Wheat Ridge CO 80033

Andrew Newberry
 Project Number: [none]
 Project: Noble - Shable USX AB#11-16P

Volatile Organic Compounds by GC/MS SW846 8260D - Quality Control
Origins Laboratory, Inc.

Analyte	Result	Reporting Limit	Units	Spike Level	Source Result	%REC	%REC Limits	RPD	RPD Limit	Notes
---------	--------	-----------------	-------	-------------	---------------	------	-------------	-----	-----------	-------

Batch B4B2842 - EPA 5030 (soil)

Matrix Spike Dup (B4B2842-MSD1)	Source: Y402686-01			Prepared: 02/28/2024 Analyzed: 02/29/2024						
1,2,4-Trimethylbenzene	0.0987	0.00200	mg/kg	0.100	ND	98.7	70-130	9.49	20	
1,3,5-Trimethylbenzene	0.0993	0.00200	"	0.100	ND	99.3	70-130	8.11	20	
Benzene	0.0957	0.00200	"	0.100	ND	95.7	70-130	12.9	20	
Ethylbenzene	0.102	0.00200	"	0.100	ND	102	70-130	8.13	20	
Naphthalene	0.104	0.00380	"	0.100	ND	104	70-130	10.1	20	
Toluene	0.0961	0.00200	"	0.100	ND	96.1	70-130	10.4	20	
o-Xylene	0.0958	0.00200	"	0.100	ND	95.8	70-130	8.57	20	
m,p-Xylene	0.203	0.00400	"	0.200	ND	101	70-130	7.95	20	
Surrogate: 1,2-Dichloroethane-d4	0.13		"	0.125		103	70-130			
Surrogate: Toluene-d8	0.12		"	0.125		96.8	70-130			
Surrogate: 4-Bromofluorobenzene	0.13		"	0.125		101	70-130			

Origins Laboratory, Inc.



The results in this report apply to the samples analyzed in accordance with the chain of custody document. This analytical report must be reproduced in its entirety.

Eagle Environmental Consulting, LLC
 8000 W 44th Ave
 Wheat Ridge CO 80033

Andrew Newberry
 Project Number: [none]
 Project: Noble - Shable USX AB#11-16P

Volatile Organic Compounds by GC/MS SW846 8260D - Quality Control
Origins Laboratory, Inc.

Analyte	Result	Reporting Limit	Units	Spike Level	Source Result	%REC	%REC Limits	RPD	RPD Limit	Notes
Batch B4B2936 - EPA 3550B										
Blank (B4B2936-BLK1)										
					Prepared: 02/29/2024 Analyzed: 03/04/2024					
Diesel (C10-C28)	ND	25.0	mg/kg							U
Residual Range Organics (C28-C40)	ND	100	"							U
Surrogate: o-Terphenyl	18		"	24.9		71.5	50-150			

Origins Laboratory, Inc.



The results in this report apply to the samples analyzed in accordance with the chain of custody document. This analytical report must be reproduced in its entirety.

Jordan A. Bynon, Project Manager

Eagle Environmental Consulting, LLC
 8000 W 44th Ave
 Wheat Ridge CO 80033

Andrew Newberry
 Project Number: [none]
 Project: Noble - Shable USX AB#11-16P

Extractable Petroleum Hydrocarbons by 8015D - Quality Control
Origins Laboratory, Inc.

Analyte	Result	Reporting Limit	Units	Spike Level	Source Result	%REC	%REC Limits	RPD	RPD Limit	Notes
---------	--------	-----------------	-------	-------------	---------------	------	-------------	-----	-----------	-------

Batch B4B2936 - EPA 3550B

LCS (B4B2936-BS1)

Prepared: 02/29/2024 Analyzed: 03/04/2024

Diesel (C10-C28)	925	50.0	mg/kg	1000		92.5	70-130			
Residual Range Organics (C28-C40)	992	200	"	1000		99.2	70-130			
Surrogate: o-Terphenyl	42		"	49.8		83.9	50-150			

Origins Laboratory, Inc.



The results in this report apply to the samples analyzed in accordance with the chain of custody document. This analytical report must be reproduced in its entirety.

Eagle Environmental Consulting, LLC
 8000 W 44th Ave
 Wheat Ridge CO 80033

Andrew Newberry
 Project Number: [none]
 Project: Noble - Shable USX AB#11-16P

Extractable Petroleum Hydrocarbons by 8015D - Quality Control
Origins Laboratory, Inc.

Analyte	Result	Reporting Limit	Units	Spike Level	Source Result	%REC	%REC Limits	RPD	RPD Limit	Notes
---------	--------	-----------------	-------	-------------	---------------	------	-------------	-----	-----------	-------

Batch B4B2936 - EPA 3550B

Matrix Spike (B4B2936-MS1)	Source: Y402686-01			Prepared: 02/29/2024 Analyzed: 03/04/2024						
Diesel (C10-C28)	1010	50.0	mg/kg	1000	ND	101	70-130			
Residual Range Organics (C28-C40)	1090	200	"	1000	ND	109	70-130			
Surrogate: o-Terphenyl	39		"	49.8		78.0	50-150			

Origins Laboratory, Inc.



The results in this report apply to the samples analyzed in accordance with the chain of custody document. This analytical report must be reproduced in its entirety.

Eagle Environmental Consulting, LLC
 8000 W 44th Ave
 Wheat Ridge CO 80033

Andrew Newberry
 Project Number: [none]
 Project: Noble - Shable USX AB#11-16P

Extractable Petroleum Hydrocarbons by 8015D - Quality Control
Origins Laboratory, Inc.

Analyte	Result	Reporting Limit	Units	Spike Level	Source Result	%REC	%REC Limits	RPD	RPD Limit	Notes
Batch B4B2936 - EPA 3550B										
Matrix Spike Dup (B4B2936-MSD1)					Source: Y402686-01					Prepared: 02/29/2024 Analyzed: 03/04/2024
Diesel (C10-C28)	863	50.0	mg/kg	1000	ND	86.3	70-130	16.1	35	
Residual Range Organics (C28-C40)	973	200	"	1000	ND	97.3	70-130	10.9	35	
Surrogate: o-Terphenyl	29		"	49.8		58.7	50-150			

Origins Laboratory, Inc.



The results in this report apply to the samples analyzed in accordance with the chain of custody document. This analytical report must be reproduced in its entirety.

Eagle Environmental Consulting, LLC
 8000 W 44th Ave
 Wheat Ridge CO 80033

Andrew Newberry
 Project Number: [none]
 Project: Noble - Shable USX AB#11-16P

Extractable Petroleum Hydrocarbons by 8015D - Quality Control
Origins Laboratory, Inc.

Analyte	Result	Reporting Limit	Units	Spike Level	Source Result	%REC	%REC Limits	RPD	RPD Limit	Notes
---------	--------	-----------------	-------	-------------	---------------	------	-------------	-----	-----------	-------

Metals by EPA 6000/7000 Series Methods - Quality Control
Origins Laboratory, Inc.

Analyte	Result	Reporting Limit	Units	Spike Level	Source Result	%REC	%REC Limits	RPD	RPD Limit	Notes
---------	--------	-----------------	-------	-------------	---------------	------	-------------	-----	-----------	-------

Batch B4B2825 - EPA 3050B

Blank (B4B2825-BLK1)

Prepared: 02/28/2024 Analyzed: 03/11/2024

Arsenic	ND	0.290	mg/kg							
Barium	ND	10.0	"							
Cadmium	ND	0.100	"							
Copper	ND	10.0	"							
Lead	ND	1.00	"							
Nickel	ND	1.00	"							
Selenium	ND	0.260	"							
Silver	ND	0.100	"							
Zinc	ND	37.0	"							

LCS (B4B2825-BS1)

Prepared: 02/28/2024 Analyzed: 03/19/2024

Arsenic	5.01	0.290	mg/kg	5.00		100	80-120			
Barium	547	10.0	"	500		109	80-120			
Cadmium	5.82	0.100	"	5.00		116	80-120			
Copper	56.2	10.0	"	50.0		112	80-120			
Lead	5.27	1.00	"	5.00		105	80-120			
Nickel	5.43	1.00	"	5.00		109	80-120			
Selenium	10.3	0.260	"	9.50		109	80-120			
Silver	5.40	0.100	"	5.00		108	80-120			
Zinc	53.7	37.0	"	50.0		107	80-120			

Matrix Spike (B4B2825-MS1)

Source: Y402680-01

Prepared: 02/28/2024 Analyzed: 03/15/2024

Origins Laboratory, Inc.



The results in this report apply to the samples analyzed in accordance with the chain of custody document. This analytical report must be reproduced in its entirety.

Eagle Environmental Consulting, LLC
 8000 W 44th Ave
 Wheat Ridge CO 80033

Andrew Newberry
 Project Number: [none]
 Project: Noble - Shable USX AB#11-16P

Metals by EPA 6000/7000 Series Methods - Quality Control
Origins Laboratory, Inc.

Analyte	Result	Reporting Limit	Units	Spike Level	Source Result	%REC	%REC Limits	RPD	RPD Limit	Notes
---------	--------	-----------------	-------	-------------	---------------	------	-------------	-----	-----------	-------

Batch B4B2825 - EPA 3050B

Matrix Spike (B4B2825-MS1)		Source: Y402680-01			Prepared: 02/28/2024 Analyzed: 03/15/2024					
Arsenic	8.56	0.279	mg/kg	4.81	4.55	83.5	75-125			
Barium	607	9.61	"	481	89.4	108	75-125			
Cadmium	5.04	0.0961	"	4.81	0.322	98.1	75-125			
Copper	52.3	9.61	"	48.1	8.85	90.4	75-125			
Lead	15.8	0.961	"	4.81	9.58	130	75-125			QM-07
Nickel	10.0	0.961	"	4.81	5.73	89.6	75-125			
Selenium	9.77	0.250	"	9.13	0.405	103	75-125			
Silver	5.24	0.0961	"	4.81	0.252	104	75-125			
Zinc	80.6	35.6	"	48.1	32.4	100	75-125			

Matrix Spike Dup (B4B2825-MSD1)		Source: Y402680-01			Prepared: 02/28/2024 Analyzed: 03/15/2024					
Arsenic	8.98	0.243	mg/kg	4.18	4.55	106	75-125	4.80	20	
Barium	560	8.37	"	418	89.4	112	75-125	8.14	20	
Cadmium	4.38	0.0837	"	4.18	0.322	97.1	75-125	13.9	20	
Copper	46.0	8.37	"	41.8	8.85	88.7	75-125	12.9	20	
Lead	16.8	0.837	"	4.18	9.58	174	75-125	6.25	20	QM-07
Nickel	8.99	0.837	"	4.18	5.73	78.1	75-125	10.9	20	
Selenium	8.48	0.218	"	7.95	0.405	102	75-125	14.1	20	
Silver	4.49	0.0837	"	4.18	0.252	101	75-125	15.4	20	
Zinc	71.0	31.0	"	41.8	32.4	92.3	75-125	12.7	20	

Origins Laboratory, Inc.



The results in this report apply to the samples analyzed in accordance with the chain of custody document. This analytical report must be reproduced in its entirety.

Eagle Environmental Consulting, LLC
 8000 W 44th Ave
 Wheat Ridge CO 80033

Andrew Newberry
 Project Number: [none]
 Project: Noble - Shable USX AB#11-16P

EPA 8270E (SW846) - Semivolatile Organic Compounds - Quality Control
Origins Laboratory, Inc.

Analyte	Result	Reporting Limit	Units	Spike Level	Source Result	%REC	%REC Limits	RPD	RPD Limit	Notes
---------	--------	-----------------	-------	-------------	---------------	------	-------------	-----	-----------	-------

Batch B4C0101 - EPA 3580

Blank (B4C0101-BLK1)

Prepared: 03/01/2024 Analyzed: 03/01/2024

1-Methylnaphthalene	ND	0.002	mg/kg							U
2-Methylnaphthalene	ND	0.002	"							U
Acenaphthene	ND	0.020	"							U
Anthracene	ND	0.020	"							U
Benzo (a) anthracene	ND	0.005	"							U
Benzo (a) pyrene	ND	0.020	"							U
Benzo (b) fluoranthene	ND	0.020	"							U
Benzo (g,h,i) perylene	ND	0.020	"							U
Benzo (k) fluoranthene	ND	0.020	"							U
Chrysene	ND	0.020	"							U
Dibenz (a,h) anthracene	ND	0.020	"							U
Fluoranthene	ND	0.020	"							U
Fluorene	ND	0.020	"							U
Indeno (1,2,3-cd) pyrene	ND	0.020	"							U
Naphthalene	ND	0.002	"							U
Phenanthrene	ND	0.020	"							U
Pyrene	ND	0.020	"							U
Surrogate: Fluorene-d10	200		ug/kg	200		100	60-130			
Surrogate: Anthracene-d10	190		"	200		93.3	60-130			
Surrogate: Pyrene-d10	200		"	200		101	60-130			
Surrogate: Benzo (a) pyrene-d12	210		"	200		107	60-130			

LCS (B4C0101-BS1)

Prepared: 03/01/2024 Analyzed: 03/04/2024

1-Methylnaphthalene	0.179	0.002	mg/kg	0.200		89.4	70-130			
2-Methylnaphthalene	0.178	0.002	"	0.200		89.1	70-130			
Acenaphthene	0.179	0.020	"	0.200		89.3	70-130			
Anthracene	0.176	0.020	"	0.200		88.2	70-130			

Origins Laboratory, Inc.



The results in this report apply to the samples analyzed in accordance with the chain of custody document. This analytical report must be reproduced in its entirety.

Eagle Environmental Consulting, LLC
 8000 W 44th Ave
 Wheat Ridge CO 80033

Andrew Newberry
 Project Number: [none]
 Project: Noble - Shable USX AB#11-16P

EPA 8270E (SW846) - Semivolatile Organic Compounds - Quality Control
Origins Laboratory, Inc.

Analyte	Result	Reporting Limit	Units	Spike Level	Source Result	%REC	%REC Limits	RPD	RPD Limit	Notes
---------	--------	-----------------	-------	-------------	---------------	------	-------------	-----	-----------	-------

Batch B4C0101 - EPA 3580

LCS (B4C0101-BS1)

Prepared: 03/01/2024 Analyzed: 03/04/2024

Benzo (a) anthracene	0.195	0.005	mg/kg	0.200		97.5	70-130			
Benzo (a) pyrene	0.192	0.020	"	0.200		96.2	70-130			
Benzo (b) fluoranthene	0.179	0.020	"	0.200		89.3	70-130			
Benzo (g,h,i) perylene	0.184	0.020	"	0.200		91.9	70-130			
Benzo (k) fluoranthene	0.175	0.020	"	0.200		87.5	70-130			
Chrysene	0.187	0.020	"	0.200		93.4	70-130			
Dibenz (a,h) anthracene	0.189	0.020	"	0.200		94.5	70-130			
Fluoranthene	0.169	0.020	"	0.200		84.7	70-130			
Fluorene	0.183	0.020	"	0.200		91.4	70-130			
Indeno (1,2,3-cd) pyrene	0.190	0.020	"	0.200		94.9	70-130			
Naphthalene	0.186	0.002	"	0.200		92.9	70-130			
Phenanthrene	0.167	0.020	"	0.200		83.7	70-130			
Pyrene	0.165	0.020	"	0.200		82.4	70-130			
Surrogate: Fluorene-d10	200		ug/kg	200		100	60-130			
Surrogate: Anthracene-d10	190		"	200		94.1	60-130			
Surrogate: Pyrene-d10	190		"	200		93.9	60-130			
Surrogate: Benzo (a) pyrene-d12	210		"	200		104	60-130			

Matrix Spike (B4C0101-MS1)

Source: Y402683-01

Prepared: 03/01/2024 Analyzed: 03/01/2024

1-Methylnaphthalene	0.185	0.002	mg/kg	0.200	ND	92.5	70-130			
2-Methylnaphthalene	0.182	0.002	"	0.200	ND	91.1	70-130			
Acenaphthene	0.183	0.020	"	0.200	ND	91.6	70-130			
Anthracene	0.174	0.020	"	0.200	ND	86.8	70-130			
Benzo (a) anthracene	0.202	0.005	"	0.200	ND	101	70-130			
Benzo (a) pyrene	0.197	0.020	"	0.200	ND	98.4	70-130			
Benzo (b) fluoranthene	0.195	0.020	"	0.200	0.0003	97.4	70-130			
Benzo (g,h,i) perylene	0.185	0.020	"	0.200	ND	92.3	70-130			

Origins Laboratory, Inc.



The results in this report apply to the samples analyzed in accordance with the chain of custody document. This analytical report must be reproduced in its entirety.

Eagle Environmental Consulting, LLC
 8000 W 44th Ave
 Wheat Ridge CO 80033

Andrew Newberry
 Project Number: [none]
 Project: Noble - Shable USX AB#11-16P

EPA 8270E (SW846) - Semivolatile Organic Compounds - Quality Control
Origins Laboratory, Inc.

Analyte	Result	Reporting Limit	Units	Spike Level	Source Result	%REC	%REC Limits	RPD	RPD Limit	Notes
---------	--------	-----------------	-------	-------------	---------------	------	-------------	-----	-----------	-------

Batch B4C0101 - EPA 3580

Matrix Spike (B4C0101-MS1)		Source: Y402683-01			Prepared: 03/01/2024 Analyzed: 03/01/2024					
Benzo (k) fluoranthene	0.203	0.020	mg/kg	0.200	ND	101	70-130			
Chrysene	0.190	0.020	"	0.200	ND	94.8	70-130			
Dibenz (a,h) anthracene	0.188	0.020	"	0.200	ND	94.0	70-130			
Fluoranthene	0.174	0.020	"	0.200	ND	87.0	70-130			
Fluorene	0.186	0.020	"	0.200	ND	92.8	70-130			
Indeno (1,2,3-cd) pyrene	0.189	0.020	"	0.200	ND	94.4	70-130			
Naphthalene	0.188	0.002	"	0.200	ND	93.9	70-130			
Phenanthrene	0.169	0.020	"	0.200	ND	84.4	70-130			
Pyrene	0.182	0.020	"	0.200	ND	90.9	70-130			
Surrogate: Fluorene-d10	200		ug/kg	200		100	60-130			
Surrogate: Anthracene-d10	190		"	200		95.4	60-130			
Surrogate: Pyrene-d10	200		"	200		100	60-130			
Surrogate: Benzo (a) pyrene-d12	210		"	200		107	60-130			

Matrix Spike Dup (B4C0101-MSD1)		Source: Y402683-01			Prepared: 03/01/2024 Analyzed: 03/01/2024					
1-Methylnaphthalene	0.186	0.002	mg/kg	0.200	ND	93.2	70-130	0.820	20	
2-Methylnaphthalene	0.185	0.002	"	0.200	ND	92.3	70-130	1.25	20	
Acenaphthene	0.184	0.020	"	0.200	ND	92.0	70-130	0.491	20	
Anthracene	0.183	0.020	"	0.200	ND	91.3	70-130	5.09	20	
Benzo (a) anthracene	0.191	0.005	"	0.200	ND	95.4	70-130	5.70	20	
Benzo (a) pyrene	0.201	0.020	"	0.200	ND	100	70-130	1.86	20	
Benzo (b) fluoranthene	0.190	0.020	"	0.200	0.0003	95.0	70-130	2.52	20	
Benzo (g,h,i) perylene	0.182	0.020	"	0.200	ND	91.0	70-130	1.35	20	
Benzo (k) fluoranthene	0.201	0.020	"	0.200	ND	101	70-130	0.835	20	
Chrysene	0.192	0.020	"	0.200	ND	95.8	70-130	1.05	20	
Dibenz (a,h) anthracene	0.184	0.020	"	0.200	ND	92.0	70-130	2.08	20	
Fluoranthene	0.177	0.020	"	0.200	ND	88.4	70-130	1.64	20	

Origins Laboratory, Inc.



The results in this report apply to the samples analyzed in accordance with the chain of custody document. This analytical report must be reproduced in its entirety.

Eagle Environmental Consulting, LLC
 8000 W 44th Ave
 Wheat Ridge CO 80033

Andrew Newberry
 Project Number: [none]
 Project: Noble - Shable USX AB#11-16P

EPA 8270E (SW846) - Semivolatile Organic Compounds - Quality Control
Origins Laboratory, Inc.

Analyte	Result	Reporting Limit	Units	Spike Level	Source Result	%REC	%REC Limits	RPD	RPD Limit	Notes
---------	--------	-----------------	-------	-------------	---------------	------	-------------	-----	-----------	-------

Batch B4C0101 - EPA 3580

Matrix Spike Dup (B4C0101-MSD1)	Source: Y402683-01			Prepared: 03/01/2024 Analyzed: 03/01/2024						
Fluorene	0.186	0.020	mg/kg	0.200	ND	93.2	70-130	0.428	20	
Indeno (1,2,3-cd) pyrene	0.185	0.020	"	0.200	ND	92.7	70-130	1.81	20	
Naphthalene	0.190	0.002	"	0.200	ND	95.2	70-130	1.34	20	
Phenanthrene	0.174	0.020	"	0.200	ND	86.8	70-130	2.85	20	
Pyrene	0.189	0.020	"	0.200	ND	94.3	70-130	3.72	20	
Surrogate: Fluorene-d10	200		ug/kg	200		101	60-130			
Surrogate: Anthracene-d10	190		"	200		94.9	60-130			
Surrogate: Pyrene-d10	210		"	200		104	60-130			
Surrogate: Benzo (a) pyrene-d12	220		"	200		108	60-130			

Origins Laboratory, Inc.



The results in this report apply to the samples analyzed in accordance with the chain of custody document. This analytical report must be reproduced in its entirety.

Eagle Environmental Consulting, LLC
 8000 W 44th Ave
 Wheat Ridge CO 80033

Andrew Newberry
 Project Number: [none]
 Project: Noble - Shable USX AB#11-16P

Classical Chemistry Parameters - Quality Control
Origins Laboratory, Inc.

Analyte	Result	Reporting Limit	Units	Spike Level	Source Result	%REC	%REC Limits	RPD	RPD Limit	Notes
---------	--------	-----------------	-------	-------------	---------------	------	-------------	-----	-----------	-------

Batch B4C0505 - DTPA Sorbitol Preparation

Blank (B4C0505-BLK1)

Prepared: 03/05/2024 Analyzed: 03/06/2024

Boron ND 0.100 mg/L

Duplicate (B4C0505-DUP1)

Source: Y402687-01

Prepared: 03/05/2024 Analyzed: 03/06/2024

Boron 1.14 0.101 mg/L 1.16 1.48 50

Batch B4C0510 - Saturated Paste Metals

Blank (B4C0510-BLK1)

Prepared: 03/05/2024 Analyzed: 03/06/2024

Calcium PPM ND 10.0 mg/L

SAR ND 0.0100 SAR

Magnesium PPM ND 10.0 mg/L

Sodium PPM ND 10.0 "

Duplicate (B4C0510-DUP1)

Source: Y402687-01

Prepared: 03/05/2024 Analyzed: 03/06/2024

SAR ND 0.0100 SAR 6.29 200

Calcium PPM 608 10.0 mg/L 576 5.47 50

Magnesium PPM 78.4 10.0 " 76.4 2.62 50

Sodium PPM 620 10.0 " 605 2.42 50

Origins Laboratory, Inc.



The results in this report apply to the samples analyzed in accordance with the chain of custody document. This analytical report must be reproduced in its entirety.

Eagle Environmental Consulting, LLC
 8000 W 44th Ave
 Wheat Ridge CO 80033

Andrew Newberry
 Project Number: [none]
 Project: Noble - Shable USX AB#11-16P

Saturated Paste - Quality Control
Origins Laboratory, Inc.

Analyte	Result	Reporting Limit	Units	Spike Level	Source Result	%REC	%REC Limits	RPD	RPD Limit	Notes
Batch B4C0516 - Saturated Paste pH/EC										
Blank (B4C0516-BLK1)					Prepared: 03/05/2024 Analyzed: 03/06/2024					
Specific Conductance (EC)	ND	0.00500	mmhos/cm							
Duplicate (B4C0516-DUP1)					Source: Y402687-01 Prepared: 03/05/2024 Analyzed: 03/06/2024					
pH	8.05		pH Units		7.83			2.77	25	
Specific Conductance (EC)	5.09	0.00500	mmhos/cm		4.95			2.82	25	

Origins Laboratory, Inc.



The results in this report apply to the samples analyzed in accordance with the chain of custody document. This analytical report must be reproduced in its entirety.

Eagle Environmental Consulting, LLC
 8000 W 44th Ave
 Wheat Ridge CO 80033

Andrew Newberry
 Project Number: [none]
 Project: Noble - Shable USX AB#11-16P

Total Metals by 7196A - Quality Control
Waypoint Analytical, LLC.

Analyte	Result	Reporting Limit	Units	Spike Level	Source Result	%REC	%REC Limits	RPD	RPD Limit	Notes
Batch L739532 -										
DUP (L 99056-DUP)		Source: 99056			Prepared: Analyzed: 03/20/2024					
Chromium, Hexavalent	ND	0.5	mg/Kg		<0.500		-	0	20	
MS (L 99056-MS)		Source: 99056			Prepared: Analyzed: 03/20/2024					
Chromium, Hexavalent	30	2.5	mg/Kg	39.3	< 0.244	76	75-125			
LCS (LCS)		Prepared: Analyzed: 03/20/2024								
Chromium, Hexavalent	6.26	0.5	mg/Kg	8		78	75-125			
LRB (LRB)		Prepared: Analyzed: 03/20/2024								
Chromium, Hexavalent	ND	0.5	mg/Kg				-			

Origins Laboratory, Inc.



The results in this report apply to the samples analyzed in accordance with the chain of custody document. This analytical report must be reproduced in its entirety.

Eagle Environmental Consulting, LLC
 8000 W 44th Ave
 Wheat Ridge CO 80033

Andrew Newberry
 Project Number: [none]
 Project: Noble - Shable USX AB#11-16P

Total Metals by 7196A - Quality Control
Waypoint Analytical, LLC.

Analyte	Result	Reporting Limit	Units	Spike Level	Source Result	%REC	%REC Limits	RPD	RPD Limit	Notes
Batch L737860 -										
DUP (L 99009-DUP)		Source: 99009			Prepared: Analyzed: 03/14/2024					
Chromium, Hexavalent	ND	0.5	mg/Kg		<0.500		-	0	20	
MS (L 99009-MS)		Source: 99009			Prepared: Analyzed: 03/14/2024					
Chromium, Hexavalent	32	2.5	mg/Kg	39.2	< 0.244	82	75-125			
LCS (LCS)		Prepared: Analyzed: 03/14/2024								
Chromium, Hexavalent	6.07	0.5	mg/Kg	8		76	75-125			
LRB (LRB)		Prepared: Analyzed: 03/14/2024								
Chromium, Hexavalent	ND	0.5	mg/Kg				-			

Origins Laboratory, Inc.



The results in this report apply to the samples analyzed in accordance with the chain of custody document. This analytical report must be reproduced in its entirety.

Eagle Environmental Consulting, LLC
8000 W 44th Ave
Wheat Ridge CO 80033

Andrew Newberry
Project Number: [none]
Project: Noble - Shable USX AB#11-16P

Notes and Definitions

U Sample is Non-Detect.

QM-07 The spike recovery was outside acceptance limits for the MS and/or MSD. The batch was accepted based on acceptable LCS recovery.

ND Analyte NOT DETECTED at or above the reporting limit

RPD Relative Percent Difference

All soil results are reported on a wet weight basis.

Calculated results may use J-flag data (instead of reported "ND") as part of calculation to provide a more accurate result.

Origins Laboratory, Inc.



The results in this report apply to the samples analyzed in accordance with the chain of custody document. This analytical report must be reproduced in its entirety.

Jordan A. Bynon, Project Manager

March 26, 2024

Eagle Environmental Consulting, LLC

Andrew Newberry

8000 W 44th Ave

Wheat Ridge CO 80033

Project Name - Noble - Shable USX AB#11-16P

Project Number - [none]

Attached are your analytical results for Noble - Shable USX AB#11-16P received by Origins Laboratory, Inc. February 27, 2024. This project is associated with Origins project number Y402692-01.

The analytical results in the following report were analyzed under the guidelines of EPA Methods. These methods are identified as follows; "SW" are defined in SW-846, "EPA" are defined in 40CFR part 136 and "SM" are defined in the most current revision of Standard Methods For the Examination of Water and Wastewater.

The analytical results apply specifically to the samples and analyses specified per the attached Chain of Custody. As such, this report shall not be reproduced except in full, without the written approval of Origin's laboratory.

Unless otherwise noted, the analytical results for all soil samples are reported on a wet weight basis. All analytical analyses were performed under NELAP guidelines unless noted by a data qualifier.

Any holding time exceedances, deviations from the method specifications or deviations from Origins Laboratory's Standard Operating Procedures are outlined in the case narrative.

Thank you for selecting Origins for your analytical needs. Please contact us with any questions concerning this report, or if we can help with anything at all.

Origins Laboratory, Inc.
303.433.1322
o-squad@oelabinc.com



Eagle Environmental Consulting, LLC
8000 W 44th Ave
Wheat Ridge CO 80033

Andrew Newberry
Project Number: [none]
Project: Noble - Shable USX AB#11-16P

CROSS REFERENCE REPORT

Sample ID	Laboratory ID	Matrix	Date Sampled	Date Received
Background-01@7.5-10'	Y402692-01	Soil	February 26, 2024 14:45	02/27/2024 16:45
Background-02@7.5-10'	Y402692-02	Soil	February 26, 2024 15:06	02/27/2024 16:45
Background-03@7.5-10'	Y402692-03	Soil	February 26, 2024 15:22	02/27/2024 16:45
Background-04@7.5-10'	Y402692-04	Soil	February 26, 2024 15:38	02/27/2024 16:45
Background-05@7.5-10'	Y402692-05	Soil	February 26, 2024 15:52	02/27/2024 16:45

Origins Laboratory, Inc.



The results in this report apply to the samples analyzed in accordance with the chain of custody document. This analytical report must be reproduced in its entirety.

Eagle Environmental Consulting, LLC
 8000 W 44th Ave
 Wheat Ridge CO 80033

Andrew Newberry
 Project Number: [none]
 Project: Noble - Shable USX AB#11-16P

Origins Laboratory

F-012207-01-R1
 Effective Date: 01/09/12

Sample Receipt Checklist

Origins Work Order: 4402092

Client: Eagle
 Client Project ID: Shable USX AB #11-16P

Checklist Completed by: JSN/SHS
 Date/time completed: 2/29/12

Shipped Via: TUO
 (UPS, FedEx, Hand Delivered, Pick-up, etc.)
 Airbill #: N/A

Matrix(s) Received: (Check all that apply): Soil/Solid Water Other: _____

Cooler Number/Temperature: 1, 1.2 °C / _____ °C / _____ °C (Describe) _____ °C

Thermometer ID: 7004

Requirement Description	Yes	No	N/A	Comments (if any)
If samples require cooling, was the temperature between 0°C to ≤ 6°C ⁽¹⁾ ?	/			
Is there ice present (document if blue ice is used)	/			
Are custody seals present on cooler? (if so, document in comments if they are signed and dated, broken or intact)		/		
Are custody seals present on each sample container? (if so, document in comments if they are signed and dated, broken or intact)		/		
Were all samples received intact ⁽¹⁾ ?	/			
Was adequate sample volume provided ⁽¹⁾ ?	/			
Are short holding time analytes or samples with HTs due within 48 hours present ⁽¹⁾ ?		/		
Is a chain-of-custody (COC) present and filled out completely ⁽¹⁾ ?	/			
Does the COC agree with the number and type of sample bottles received ⁽¹⁾ ?	/			
Do the sample IDs on the bottle labels match the COC ⁽¹⁾ ?	/			
Is the COC properly relinquished by the client with date and time recorded ⁽¹⁾ ?	/			
For volatiles in water – is there headspace (> ¼ inch bubble) present? if yes, contact client and note in narrative.			/	
Are samples preserved that require preservation and was it checked ⁽¹⁾ ? (note ID of confirmation instrument used in comments) / (preservation is not confirmed for subcontracted analyses in order to insure sample integrity)/(pH <2 for samples preserved with HNO ₃ , HCL, H ₂ SO ₄) / (pH >10 for samples preserved with NaAsO ₂ +NaOH, ZnAc+NaOH)			/	
Additional Comments (if any):				

⁽¹⁾if NO, then contact the client before proceeding with analysis and note date/time and person-contacted as well as the corrective action to in the additional comments (above) and the case narrative.

Reviewed by (Project Manager) [Signature] Date/Time Reviewed 2/29/12

Origins Laboratory, Inc.

[Signature]

The results in this report apply to the samples analyzed in accordance with the chain of custody document. This analytical report must be reproduced in its entirety.

Eagle Environmental Consulting, LLC
 8000 W 44th Ave
 Wheat Ridge CO 80033

Andrew Newberry
 Project Number: [none]
 Project: Noble - Shable USX AB#11-16P

Background-01@7.5-10'
2/26/2024 2:45:00PM

Analyte	Result	Min Detection Limit	Reporting Limit	Units	Dilution	Batch	Prepared	Analyzed	Notes
---------	--------	---------------------	-----------------	-------	----------	-------	----------	----------	-------

Origins Laboratory, Inc.
Y402692-01 (Soil)

Boron (DTPA Sorbitol)

Boron	1.28		0.100	mg/L	1	B4C0505	03/05/2024	03/06/2024	
-------	------	--	-------	------	---	---------	------------	------------	--

Metals by Saturated Paste by EPA 6010

Calcium	2.52		0.499	meq/L	10	[CALC]	03/05/2024	03/06/2024	
Magnesium	3.70		0.823	"	"	"	"	"	
Sodium	2.22		0.435	"	"	"	"	"	

pH in Soil by 9045D

pH	8.24			pH Units	1	B4C0516	03/05/2024	03/06/2024	
----	------	--	--	----------	---	---------	------------	------------	--

SAR by 20B Saturated Paste

SAR	1.26		0.0100	SAR	1	B4C0510	03/05/2024	03/06/2024	
-----	------	--	--------	-----	---	---------	------------	------------	--

Specific Conductance Mod. 9050A

Specific Conductance (EC)	0.812		0.00500	mmhos/cm	1	B4C0516	03/05/2024	03/06/2024	
---------------------------	-------	--	---------	----------	---	---------	------------	------------	--

Table 915 metals by EPA 6020B

Arsenic	2.28		0.254	mg/kg	10	B4B2825	02/28/2024	03/11/2024	
Barium	50.4		8.77	"	"	"	"	"	
Cadmium	0.475		0.0877	"	"	"	"	"	
Copper	32.8		8.77	"	"	"	"	"	

Origins Laboratory, Inc.



The results in this report apply to the samples analyzed in accordance with the chain of custody document. This analytical report must be reproduced in its entirety.

Eagle Environmental Consulting, LLC
 8000 W 44th Ave
 Wheat Ridge CO 80033

Andrew Newberry
 Project Number: [none]
 Project: Noble - Shable USX AB#11-16P

Background-01@7.5-10'
2/26/2024 2:45:00PM

Analyte	Result	Min Detection Limit	Reporting Limit	Units	Dilution	Batch	Prepared	Analyzed	Notes
---------	--------	---------------------	-----------------	-------	----------	-------	----------	----------	-------

Origins Laboratory, Inc.
Y402692-01 (Soil)

Table 915 metals by EPA 6020B

Lead	21.0		0.877	mg/kg	10	B4B2825	02/28/2024	03/11/2024	
Nickel	15.6		0.877	"	"	"	"	"	
Selenium	0.348		0.228	"	"	"	"	"	
Silver	0.146		0.0877	"	"	"	"	"	
Zinc	59.7		32.5	"	"	"	"	"	

Total Metals by 7196A

Chromium, Hexavalent	ND	0.244	0.5	mg/Kg	1	L739532	02/26/2024	03/20/2024	
----------------------	----	-------	-----	-------	---	---------	------------	------------	--

Origins Laboratory, Inc.



The results in this report apply to the samples analyzed in accordance with the chain of custody document. This analytical report must be reproduced in its entirety.

Eagle Environmental Consulting, LLC
 8000 W 44th Ave
 Wheat Ridge CO 80033

Andrew Newberry
 Project Number: [none]
 Project: Noble - Shable USX AB#11-16P

Background-02@7.5-10'
2/26/2024 3:06:00PM

Analyte	Result	Min Detection Limit	Reporting Limit	Units	Dilution	Batch	Prepared	Analyzed	Notes
---------	--------	---------------------	-----------------	-------	----------	-------	----------	----------	-------

Origins Laboratory, Inc.
Y402692-02 (Soil)

Boron (DTPA Sorbitol)

Boron	3.42		0.0990	mg/L	1	B4C0505	03/05/2024	03/06/2024	
-------	------	--	--------	------	---	---------	------------	------------	--

Metals by Saturated Paste by EPA 6010

Calcium	22.9		0.499	meq/L	10	[CALC]	03/05/2024	03/06/2024	
Magnesium	39.5		0.823	"	"	"	"	"	
Sodium	19.9		0.435	"	"	"	"	"	

pH in Soil by 9045D

pH	8.01			pH Units	1	B4C0516	03/05/2024	03/06/2024	
----	------	--	--	----------	---	---------	------------	------------	--

SAR by 20B Saturated Paste

SAR	3.56		0.0100	SAR	1	B4C0510	03/05/2024	03/06/2024	
-----	------	--	--------	-----	---	---------	------------	------------	--

Specific Conductance Mod. 9050A

Specific Conductance (EC)	4.77		0.00500	mmhos/cm	1	B4C0516	03/05/2024	03/06/2024	
---------------------------	------	--	---------	----------	---	---------	------------	------------	--

Table 915 metals by EPA 6020B

Arsenic	4.13		0.247	mg/kg	10	B4B2825	02/28/2024	03/11/2024	
Barium	67.9		8.52	"	"	"	"	"	
Cadmium	1.09		0.0852	"	"	"	"	"	
Copper	27.9		8.52	"	"	"	"	"	

Origins Laboratory, Inc.



The results in this report apply to the samples analyzed in accordance with the chain of custody document. This analytical report must be reproduced in its entirety.

Eagle Environmental Consulting, LLC
 8000 W 44th Ave
 Wheat Ridge CO 80033

Andrew Newberry
 Project Number: [none]
 Project: Noble - Shable USX AB#11-16P

Background-02@7.5-10'

2/26/2024 3:06:00PM

Analyte	Result	Min Detection Limit	Reporting Limit	Units	Dilution	Batch	Prepared	Analyzed	Notes
---------	--------	---------------------	-----------------	-------	----------	-------	----------	----------	-------

Origins Laboratory, Inc.
Y402692-02 (Soil)

Table 915 metals by EPA 6020B

Lead	18.7		0.852	mg/kg	10	B4B2825	02/28/2024	03/11/2024	
Nickel	33.4		0.852	"	"	"	"	"	
Selenium	0.552		0.222	"	"	"	"	"	
Silver	0.0921		0.0852	"	"	"	"	"	
Zinc	118		31.5	"	"	"	"	"	

Total Metals by 7196A

Chromium, Hexavalent	ND	0.244	0.5	mg/Kg	1	L739532	02/26/2024	03/20/2024	
----------------------	----	-------	-----	-------	---	---------	------------	------------	--

Origins Laboratory, Inc.



The results in this report apply to the samples analyzed in accordance with the chain of custody document. This analytical report must be reproduced in its entirety.

Eagle Environmental Consulting, LLC
 8000 W 44th Ave
 Wheat Ridge CO 80033

Andrew Newberry
 Project Number: [none]
 Project: Noble - Shable USX AB#11-16P

Background-03@7.5-10'
2/26/2024 3:22:00PM

Analyte	Result	Min Detection Limit	Reporting Limit	Units	Dilution	Batch	Prepared	Analyzed	Notes
---------	--------	---------------------	-----------------	-------	----------	-------	----------	----------	-------

Origins Laboratory, Inc.
Y402692-03 (Soil)

Boron (DTPA Sorbitol)

Boron	1.68		0.0990	mg/L	1	B4C0505	03/05/2024	03/06/2024	
-------	------	--	--------	------	---	---------	------------	------------	--

Metals by Saturated Paste by EPA 6010

Calcium	9.70		0.499	meq/L	10	[CALC]	03/05/2024	03/06/2024	
Magnesium	16.9		0.823	"	"	"	"	"	
Sodium	27.0		0.435	"	"	"	"	"	

pH in Soil by 9045D

pH	8.12			pH Units	1	B4C0516	03/05/2024	03/06/2024	
----	------	--	--	----------	---	---------	------------	------------	--

SAR by 20B Saturated Paste

SAR	7.41		0.0100	SAR	1	B4C0510	03/05/2024	03/06/2024	
-----	------	--	--------	-----	---	---------	------------	------------	--

Specific Conductance Mod. 9050A

Specific Conductance (EC)	4.06		0.00500	mmhos/cm	1	B4C0516	03/05/2024	03/06/2024	
---------------------------	------	--	---------	----------	---	---------	------------	------------	--

Table 915 metals by EPA 6020B

Arsenic	5.66		0.267	mg/kg	10	B4B2825	02/28/2024	03/11/2024	
Barium	46.8		9.20	"	"	"	"	"	
Cadmium	0.139		0.0920	"	"	"	"	"	
Copper	14.7		9.20	"	"	"	"	"	

Origins Laboratory, Inc.



The results in this report apply to the samples analyzed in accordance with the chain of custody document. This analytical report must be reproduced in its entirety.

Eagle Environmental Consulting, LLC
 8000 W 44th Ave
 Wheat Ridge CO 80033

Andrew Newberry
 Project Number: [none]
 Project: Noble - Shable USX AB#11-16P

Background-03@7.5-10'
2/26/2024 3:22:00PM

Analyte	Result	Min Detection Limit	Reporting Limit	Units	Dilution	Batch	Prepared	Analyzed	Notes
---------	--------	---------------------	-----------------	-------	----------	-------	----------	----------	-------

Origins Laboratory, Inc.
Y402692-03 (Soil)

Table 915 metals by EPA 6020B

Lead	16.8		0.920	mg/kg	10	B4B2825	02/28/2024	03/11/2024	
Nickel	6.53		0.920	"	"	"	"	"	
Selenium	ND		0.239	"	"	"	"	"	
Silver	ND		0.0920	"	"	"	"	"	
Zinc	ND		34.0	"	"	"	"	"	

Total Metals by 7196A

Chromium, Hexavalent	ND	0.244	0.5	mg/Kg	1	L739532	02/26/2024	03/20/2024	
----------------------	----	-------	-----	-------	---	---------	------------	------------	--

Origins Laboratory, Inc.



The results in this report apply to the samples analyzed in accordance with the chain of custody document. This analytical report must be reproduced in its entirety.

Eagle Environmental Consulting, LLC
 8000 W 44th Ave
 Wheat Ridge CO 80033

Andrew Newberry
 Project Number: [none]
 Project: Noble - Shable USX AB#11-16P

Background-04@7.5-10'
2/26/2024 3:38:00PM

Analyte	Result	Min Detection Limit	Reporting Limit	Units	Dilution	Batch	Prepared	Analyzed	Notes
---------	--------	---------------------	-----------------	-------	----------	-------	----------	----------	-------

Origins Laboratory, Inc.
Y402692-04 (Soil)

Boron (DTPA Sorbitol)

Boron	0.226		0.0993	mg/L	1	B4C0505	03/05/2024	03/06/2024	
-------	-------	--	--------	------	---	---------	------------	------------	--

Metals by Saturated Paste by EPA 6010

Calcium	2.99		0.499	meq/L	10	[CALC]	03/05/2024	03/06/2024	
Magnesium	1.92		0.823	"	"	"	"	"	
Sodium	11.0		0.435	"	"	"	"	"	

pH in Soil by 9045D

pH	7.83			pH Units	1	B4C0516	03/05/2024	03/06/2024	
----	------	--	--	----------	---	---------	------------	------------	--

SAR by 20B Saturated Paste

SAR	7.02		0.0100	SAR	1	B4C0510	03/05/2024	03/06/2024	
-----	------	--	--------	-----	---	---------	------------	------------	--

Specific Conductance Mod. 9050A

Specific Conductance (EC)	1.63		0.00500	mmhos/cm	1	B4C0516	03/05/2024	03/06/2024	
---------------------------	------	--	---------	----------	---	---------	------------	------------	--

Table 915 metals by EPA 6020B

Arsenic	2.68		0.267	mg/kg	10	B4B2825	02/28/2024	03/11/2024	
Barium	23.4		9.22	"	"	"	"	"	
Cadmium	ND		0.0922	"	"	"	"	"	
Copper	ND		9.22	"	"	"	"	"	

Origins Laboratory, Inc.



The results in this report apply to the samples analyzed in accordance with the chain of custody document. This analytical report must be reproduced in its entirety.

Eagle Environmental Consulting, LLC
 8000 W 44th Ave
 Wheat Ridge CO 80033

Andrew Newberry
 Project Number: [none]
 Project: Noble - Shable USX AB#11-16P

Background-04@7.5-10'

2/26/2024 3:38:00PM

Analyte	Result	Min Detection Limit	Reporting Limit	Units	Dilution	Batch	Prepared	Analyzed	Notes
---------	--------	---------------------	-----------------	-------	----------	-------	----------	----------	-------

Origins Laboratory, Inc.
Y402692-04 (Soil)

Table 915 metals by EPA 6020B

Lead	5.19		0.922	mg/kg	10	B4B2825	02/28/2024	03/11/2024	
Nickel	6.34		0.922	"	"	"	"	"	
Selenium	ND		0.240	"	"	"	"	"	
Silver	ND		0.0922	"	"	"	"	"	
Zinc	40.9		34.1	"	"	"	"	"	

Total Metals by 7196A

Chromium, Hexavalent	ND	0.244	0.5	mg/Kg	1	L739532	02/26/2024	03/20/2024	
----------------------	----	-------	-----	-------	---	---------	------------	------------	--

Origins Laboratory, Inc.



The results in this report apply to the samples analyzed in accordance with the chain of custody document. This analytical report must be reproduced in its entirety.

Eagle Environmental Consulting, LLC
 8000 W 44th Ave
 Wheat Ridge CO 80033

Andrew Newberry
 Project Number: [none]
 Project: Noble - Shable USX AB#11-16P

Background-05@7.5-10'
2/26/2024 3:52:00PM

Analyte	Result	Min Detection Limit	Reporting Limit	Units	Dilution	Batch	Prepared	Analyzed	Notes
---------	--------	---------------------	-----------------	-------	----------	-------	----------	----------	-------

Origins Laboratory, Inc.
Y402692-05 (Soil)

Boron (DTPA Sorbitol)

Boron	0.191		0.100	mg/L	1	B4C0505	03/05/2024	03/06/2024	
-------	-------	--	-------	------	---	---------	------------	------------	--

Metals by Saturated Paste by EPA 6010

Calcium	ND		0.499	meq/L	10	[CALC]	03/05/2024	03/06/2024	
Magnesium	ND		0.823	"	"	"	"	"	
Sodium	2.46		0.435	"	"	"	"	"	

pH in Soil by 9045D

pH	8.54			pH Units	1	B4C0516	03/05/2024	03/06/2024	
----	------	--	--	----------	---	---------	------------	------------	--

SAR by 20B Saturated Paste

SAR	4.13		0.0100	SAR	1	B4C0510	03/05/2024	03/06/2024	
-----	------	--	--------	-----	---	---------	------------	------------	--

Specific Conductance Mod. 9050A

Specific Conductance (EC)	0.327		0.00500	mmhos/cm	1	B4C0516	03/05/2024	03/06/2024	
---------------------------	-------	--	---------	----------	---	---------	------------	------------	--

Table 915 metals by EPA 6020B

Arsenic	2.90		0.251	mg/kg	10	B4B2825	02/28/2024	03/11/2024	
Barium	40.3		8.66	"	"	"	"	"	
Cadmium	0.136		0.0866	"	"	"	"	"	
Copper	ND		8.66	"	"	"	"	"	

Origins Laboratory, Inc.



The results in this report apply to the samples analyzed in accordance with the chain of custody document. This analytical report must be reproduced in its entirety.

Eagle Environmental Consulting, LLC
 8000 W 44th Ave
 Wheat Ridge CO 80033

Andrew Newberry
 Project Number: [none]
 Project: Noble - Shable USX AB#11-16P

Background-05@7.5-10'

2/26/2024 3:52:00PM

Analyte	Result	Min Detection Limit	Reporting Limit	Units	Dilution	Batch	Prepared	Analyzed	Notes
---------	--------	---------------------	-----------------	-------	----------	-------	----------	----------	-------

Origins Laboratory, Inc.
Y402692-05 (Soil)

Table 915 metals by EPA 6020B

Lead	10.2		0.866	mg/kg	10	B4B2825	02/28/2024	03/11/2024	
Nickel	7.33		0.866	"	"	"	"	"	
Selenium	ND		0.225	"	"	"	"	"	
Silver	ND		0.0866	"	"	"	"	"	
Zinc	53.6		32.0	"	"	"	"	"	

Total Metals by 7196A

Chromium, Hexavalent	ND	0.244	0.5	mg/Kg	1	L739532	02/26/2024	03/20/2024	
----------------------	----	-------	-----	-------	---	---------	------------	------------	--

Origins Laboratory, Inc.



The results in this report apply to the samples analyzed in accordance with the chain of custody document. This analytical report must be reproduced in its entirety.

Eagle Environmental Consulting, LLC
 8000 W 44th Ave
 Wheat Ridge CO 80033

Andrew Newberry
 Project Number: [none]
 Project: Noble - Shable USX AB#11-16P

Metals by EPA 6000/7000 Series Methods - Quality Control
Origins Laboratory, Inc.

Analyte	Result	Reporting Limit	Units	Spike Level	Source Result	%REC	%REC Limits	RPD	RPD Limit	Notes
---------	--------	-----------------	-------	-------------	---------------	------	-------------	-----	-----------	-------

Batch B4B2825 - EPA 3050B

Blank (B4B2825-BLK1)

Prepared: 02/28/2024 Analyzed: 03/11/2024

Arsenic	ND	0.290	mg/kg							
Barium	ND	10.0	"							
Cadmium	ND	0.100	"							
Copper	ND	10.0	"							
Lead	ND	1.00	"							
Nickel	ND	1.00	"							
Selenium	ND	0.260	"							
Silver	ND	0.100	"							
Zinc	ND	37.0	"							

LCS (B4B2825-BS1)

Prepared: 02/28/2024 Analyzed: 03/19/2024

Arsenic	5.01	0.290	mg/kg	5.00		100	80-120			
Barium	547	10.0	"	500		109	80-120			
Cadmium	5.82	0.100	"	5.00		116	80-120			
Copper	56.2	10.0	"	50.0		112	80-120			
Lead	5.27	1.00	"	5.00		105	80-120			
Nickel	5.43	1.00	"	5.00		109	80-120			
Selenium	10.3	0.260	"	9.50		109	80-120			
Silver	5.40	0.100	"	5.00		108	80-120			
Zinc	53.7	37.0	"	50.0		107	80-120			

Matrix Spike (B4B2825-MS1)

Source: Y402680-01

Prepared: 02/28/2024 Analyzed: 03/15/2024

Arsenic	8.56	0.279	mg/kg	4.81	4.55	83.5	75-125			
Barium	607	9.61	"	481	89.4	108	75-125			
Cadmium	5.04	0.0961	"	4.81	0.322	98.1	75-125			
Copper	52.3	9.61	"	48.1	8.85	90.4	75-125			
Lead	15.8	0.961	"	4.81	9.58	130	75-125			QM-07

Origins Laboratory, Inc.



The results in this report apply to the samples analyzed in accordance with the chain of custody document. This analytical report must be reproduced in its entirety.

Eagle Environmental Consulting, LLC
 8000 W 44th Ave
 Wheat Ridge CO 80033

Andrew Newberry
 Project Number: [none]
 Project: Noble - Shable USX AB#11-16P

Metals by EPA 6000/7000 Series Methods - Quality Control
Origins Laboratory, Inc.

Analyte	Result	Reporting Limit	Units	Spike Level	Source Result	%REC	%REC Limits	RPD	RPD Limit	Notes
---------	--------	-----------------	-------	-------------	---------------	------	-------------	-----	-----------	-------

Batch B4B2825 - EPA 3050B

Matrix Spike (B4B2825-MS1)

Source: Y402680-01

Prepared: 02/28/2024 Analyzed: 03/15/2024

Nickel	10.0	0.961	mg/kg	4.81	5.73	89.6	75-125			
Selenium	9.77	0.250	"	9.13	0.405	103	75-125			
Silver	5.24	0.0961	"	4.81	0.252	104	75-125			
Zinc	80.6	35.6	"	48.1	32.4	100	75-125			

Matrix Spike Dup (B4B2825-MSD1)

Source: Y402680-01

Prepared: 02/28/2024 Analyzed: 03/15/2024

Arsenic	8.98	0.243	mg/kg	4.18	4.55	106	75-125	4.80	20	
Barium	560	8.37	"	418	89.4	112	75-125	8.14	20	
Cadmium	4.38	0.0837	"	4.18	0.322	97.1	75-125	13.9	20	
Copper	46.0	8.37	"	41.8	8.85	88.7	75-125	12.9	20	
Lead	16.8	0.837	"	4.18	9.58	174	75-125	6.25	20	QM-07
Nickel	8.99	0.837	"	4.18	5.73	78.1	75-125	10.9	20	
Selenium	8.48	0.218	"	7.95	0.405	102	75-125	14.1	20	
Silver	4.49	0.0837	"	4.18	0.252	101	75-125	15.4	20	
Zinc	71.0	31.0	"	41.8	32.4	92.3	75-125	12.7	20	

Origins Laboratory, Inc.



The results in this report apply to the samples analyzed in accordance with the chain of custody document. This analytical report must be reproduced in its entirety.

Eagle Environmental Consulting, LLC
 8000 W 44th Ave
 Wheat Ridge CO 80033

Andrew Newberry
 Project Number: [none]
 Project: Noble - Shable USX AB#11-16P

Classical Chemistry Parameters - Quality Control
Origins Laboratory, Inc.

Analyte	Result	Reporting Limit	Units	Spike Level	Source Result	%REC	%REC Limits	RPD	RPD Limit	Notes
---------	--------	-----------------	-------	-------------	---------------	------	-------------	-----	-----------	-------

Batch B4C0505 - DTPA Sorbitol Preparation

Blank (B4C0505-BLK1)

Prepared: 03/05/2024 Analyzed: 03/06/2024

Boron ND 0.100 mg/L

Duplicate (B4C0505-DUP1)

Source: Y402687-01

Prepared: 03/05/2024 Analyzed: 03/06/2024

Boron 1.14 0.101 mg/L 1.16 1.48 50

Batch B4C0510 - Saturated Paste Metals

Blank (B4C0510-BLK1)

Prepared: 03/05/2024 Analyzed: 03/06/2024

Calcium PPM ND 10.0 mg/L

SAR ND 0.0100 SAR

Magnesium PPM ND 10.0 mg/L

Sodium PPM ND 10.0 "

Duplicate (B4C0510-DUP1)

Source: Y402687-01

Prepared: 03/05/2024 Analyzed: 03/06/2024

Calcium PPM 608 10.0 mg/L 576 5.47 50

SAR ND 0.0100 SAR 6.29 200

Magnesium PPM 78.4 10.0 mg/L 76.4 2.62 50

Sodium PPM 620 10.0 " 605 2.42 50

Origins Laboratory, Inc.



The results in this report apply to the samples analyzed in accordance with the chain of custody document. This analytical report must be reproduced in its entirety.

Eagle Environmental Consulting, LLC
 8000 W 44th Ave
 Wheat Ridge CO 80033

Andrew Newberry
 Project Number: [none]
 Project: Noble - Shable USX AB#11-16P

Saturated Paste - Quality Control
Origins Laboratory, Inc.

Analyte	Result	Reporting Limit	Units	Spike Level	Source Result	%REC	%REC Limits	RPD	RPD Limit	Notes
Batch B4C0516 - Saturated Paste pH/EC										
Blank (B4C0516-BLK1)					Prepared: 03/05/2024 Analyzed: 03/06/2024					
Specific Conductance (EC)	ND	0.00500	mmhos/cm							
Duplicate (B4C0516-DUP1)					Source: Y402687-01 Prepared: 03/05/2024 Analyzed: 03/06/2024					
pH	8.05		pH Units		7.83			2.77	25	
Specific Conductance (EC)	5.09	0.00500	mmhos/cm		4.95			2.82	25	

Origins Laboratory, Inc.



The results in this report apply to the samples analyzed in accordance with the chain of custody document. This analytical report must be reproduced in its entirety.

Eagle Environmental Consulting, LLC
 8000 W 44th Ave
 Wheat Ridge CO 80033

Andrew Newberry
 Project Number: [none]
 Project: Noble - Shable USX AB#11-16P

Total Metals by 7196A - Quality Control
Waypoint Analytical, LLC.

Analyte	Result	Reporting Limit	Units	Spike Level	Source Result	%REC	%REC Limits	RPD	RPD Limit	Notes
Batch L739532 -										
DUP (L 99056-DUP)		Source: Y402692-04			Prepared: Analyzed: 03/20/2024					
Chromium, Hexavalent	ND	0.5	mg/Kg		<0.500		-	0	20	
MS (L 99056-MS)		Source: Y402692-04			Prepared: Analyzed: 03/20/2024					
Chromium, Hexavalent	30	2.5	mg/Kg	39.3	< 0.244	76	75-125			
LCS (LCS)		Prepared: Analyzed: 03/20/2024								
Chromium, Hexavalent	6.26	0.5	mg/Kg	8		78	75-125			
LRB (LRB)		Prepared: Analyzed: 03/20/2024								
Chromium, Hexavalent	ND	0.5	mg/Kg				-			

Origins Laboratory, Inc.



The results in this report apply to the samples analyzed in accordance with the chain of custody document. This analytical report must be reproduced in its entirety.

Eagle Environmental Consulting, LLC
8000 W 44th Ave
Wheat Ridge CO 80033

Andrew Newberry
Project Number: [none]
Project: Noble - Shable USX AB#11-16P

Notes and Definitions

QM-07 The spike recovery was outside acceptance limits for the MS and/or MSD. The batch was accepted based on acceptable LCS recovery.

ND Analyte NOT DETECTED at or above the reporting limit

RPD Relative Percent Difference

All soil results are reported on a wet weight basis.

Calculated results may use J-flag data (instead of reported "ND") as part of calculation to provide a more accurate result.

Origins Laboratory, Inc.



The results in this report apply to the samples analyzed in accordance with the chain of custody document. This analytical report must be reproduced in its entirety.

Jordan A. Bynon, Project Manager