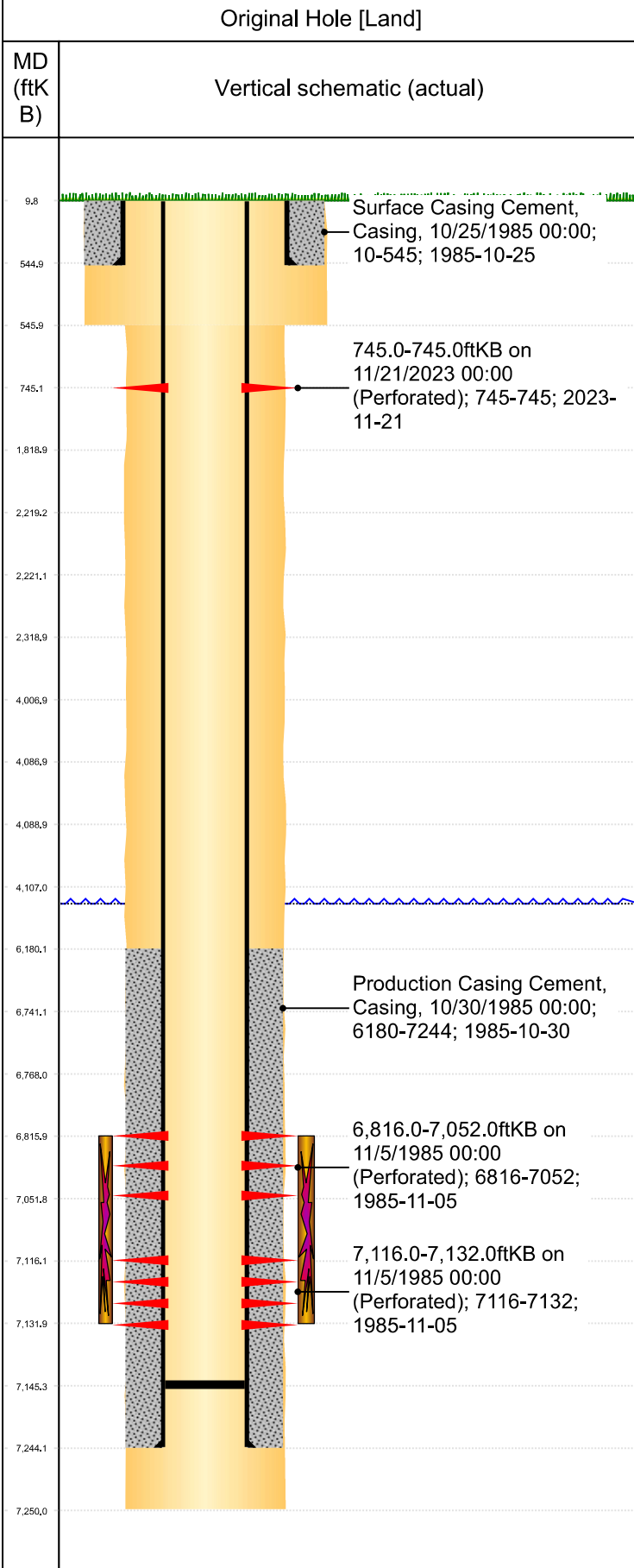




P&A Wellbore For State

Well Name: LEHAN 03



Well Header									
Surface UWI 0512312752		Business Unit Rockies		Gov Auth Dist Land		Prod Tree Loc Land			
Orig. KB to Gnd (ft) 10.00		Original Spud Date 10/24/1985		Abandon Date		Well Sub-Status SI		High...	
								N	
Comment FRAC BAFFLE @ 7074'									
Surface Location (Congressional)									
Qtr 3 NW	Qtr 4 NE	Section 8	Twonshp 4	Twonsh... N	Range 65	Rng E/... W	Latitude (°) 40.33232167 4	Longitude (°) -104.684602625	
Wellbore Sections									
Section Des		Hole Size (in)		Top Depth (ftKB)		Btm Depth (ftKB)			
SURFACE		12 1/4		10.0		546.0			
PRODUCTION		7 7/8		546.0		7,250.0			
Casing Strings									
Csg Des		Run Date		OD (in)	Wt/Len (lb/ft)	Grade	Top Depth (MD) (ftKB)	Set Depth (MD) (ftKB)	
Surface		10/25/1985		8 5/8	24.00		10	545	
Production Casing		10/30/1985		4 1/2	10.50		10	7244	
Cement									
Des		Start Date		Top (ftKB)		Btm (ftKB)			
SURFACE CASING CEMENT		10/25/1985		10.0		545.0			
PRODUCTION CASING CEMENT		10/30/1985		6,180.0		7,244.0			
Zone Statuses									
Zone Name	Status Date	Status	Fluid Type	Job			Prod Method		
NIOBRARA-CO...	11/26/1985	PR	Gas	DRILLING/COMPLETION - ORIGINAL, 10/24/198...					
CODELL	11/26/1985	PR	Gas	DRILLING/COMPLETION - ORIGINAL, 10/24/198...					
NIOBRARA	11/26/1985	PR	Gas	DRILLING/COMPLETION - ORIGINAL, 10/24/198...					
Perforation Data									
Linked Zone		Explosive Type	Entered Shot Total	Top (ftKB)	Btm (ftKB)	Date			
NIOBRARA, Original Hole			13	745.0	745.0	11/21/2023			
CODELL, Original Hole			32	6,816.0	7,132.0	11/5/1985			
				7,116.0	7,132.0	11/5/1985			
Stim/Frac Stage									
Zone		Start Date		Top (ftKB)		Btm (ftKB)			
NIOBRARA-CODELL, Original Hole		11/13/1985		6,816.0		7,132.0			
Other In Hole									
Run Date	Des		Make	OD (in)	Top (ftKB)	Btm (ftKB)			
Logs									
Date		Type				Depth Top (MD) (ftKB)	Btm (ftKB)		
10/30/1985		Compensated Density				4,303	7,264.0		
10/30/1985		Induction				551	7,268.0		
10/30/1985		Seismic				6,700	7,240.0		
10/22/2018		GYRO				10	6,950.0		
Wellbore Plug Back Total Depths									
Date		Type	Com			PBTD (ftKB)			
10/30/1985		LATCH DOWN COLLAR				7,238			
12/6/2008		FILL	VERY HARD FILL, HAD METAL AND CEMENT IN RETURNS...			7,145			