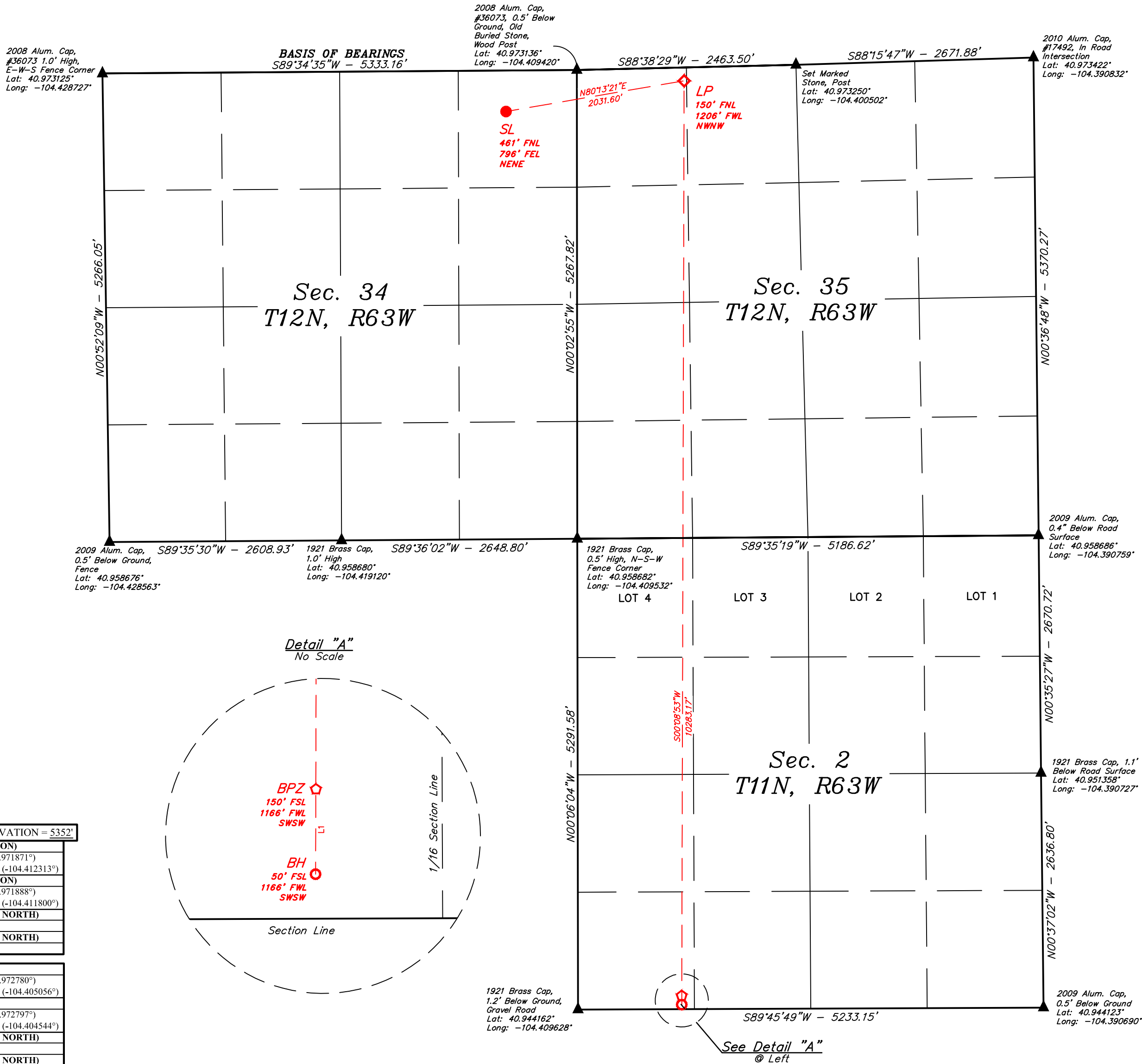
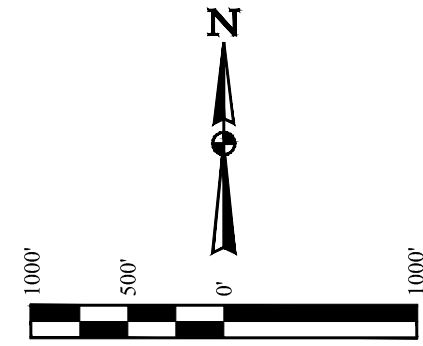


- LEGEND:**
- = SURFACE LOCATION (SL).
  - ◆ = LANDING POINT (LP).
  - ◻ = BOTTOM PRODUCTION ZONE (BPZ).
  - = BOTTOM HOLE (BH).
  - ▲ = SECTION CORNER LOCATED.

**NOTE:**  
Distances referenced  
on plat to section lines  
are perpendicular.



PDOP = 1.4
EXISTING GROUND ELEVATION = 5352'
<b>NAD 83 (SURFACE LOCATION)</b>
LATITUDE = 40°58'18.74" (40.971871°)
LONGITUDE = -104°24'44.33" (-104.412313°)
<b>NAD 27 (SURFACE LOCATION)</b>
LATITUDE = 40°58'18.80" (40.971888°)
LONGITUDE = -104°24'42.48" (-104.411800°)
<b>STATE PLANE NAD 83 (CO. NORTH)</b>
N: 1598749.87' E: 3300369.09'
<b>STATE PLANE NAD 27 (CO. NORTH)</b>
N: 598747.48' E: 2300518.59'
<b>NAD 83 (LANDING POINT)</b>
LATITUDE = 40°58'22.01" (40.972780°)
LONGITUDE = -104°24'18.20" (-104.405056°)
<b>NAD 27 (LANDING POINT)</b>
LATITUDE = 40°58'22.07" (40.972797°)
LONGITUDE = -104°24'16.36" (-104.404544°)
<b>STATE PLANE NAD 83 (CO. NORTH)</b>
N: 1599105.89' E: 3302368.79'
<b>STATE PLANE NAD 27 (CO. NORTH)</b>
N: 599103.49' E: 2302518.28'
<b>NAD 83 (BOTTOM PRODUCTION ZONE)</b>
LATITUDE = 40°56'40.44" (40.944565°)
LONGITUDE = -104°24'19.46" (-104.405406°)
<b>NAD 27 (BOTTOM PRODUCTION ZONE)</b>
LATITUDE = 40°56'40.50" (40.944583°)
LONGITUDE = -104°24'17.62" (-104.404894°)
<b>STATE PLANE NAD 83 (CO. NORTH)</b>
N: 1588825.11' E: 3302399.18'
<b>STATE PLANE NAD 27 (CO. NORTH)</b>
N: 588822.90' E: 2302548.61'
<b>NAD 83 (BOTTOM HOLE)</b>
LATITUDE = 40°56'39.45" (40.944291°)
LONGITUDE = -104°24'19.47" (-104.405409°)
<b>NAD 27 (BOTTOM HOLE)</b>
LATITUDE = 40°56'39.51" (40.944308°)
LONGITUDE = -104°24'17.63" (-104.404897°)
<b>STATE PLANE NAD 83 (CO. NORTH)</b>
N: 1588725.13' E: 3302399.47'
<b>STATE PLANE NAD 27 (CO. NORTH)</b>
N: 588722.93' E: 2302548.91'

LINE TABLE		
LINE	DIRECTION	LENGTH
L1	S00°08'53"W	100.00'

CERTIFICATE OF REGISTRATION  
THIS IS TO CERTIFY THAT THE ABOVE DESCRIBED SURVEY WAS MADE BY ME OR UNDER MY CLOSE PERSONAL SUPERVISION AND THAT THE SAME ARE TRUE AND CORRECT TO THE BEST OF MY KNOWLEDGE AND BELIEF.

REGISTERED LAND SURVEYOR  
REGISTRATION NO. 28285  
STATE OF COLORADO  
J.C., Z.B.  
Q.S.J.